

# Massachusetts

## Department of Correction

# Quarterly Report on the Status of Prison Overcrowding, First Quarter of 2005

Submitted in Compliance with Chapter 799  
Section 21 of the Acts of 1985

**Mitt Romney**  
*Governor*

**Kerry Healey**  
*Lieutenant Governor*

**Edward Flynn**  
*Secretary of Public Safety*

**Kathleen M. Dennehy**  
*Commissioner*

April, 2005

Approved by: State Purchasing Agent  
Publication No: 14,602-09-45-10-10-86

# 2005 First Quarter Report

**S**ection Twenty-one of Chapter 799 of the Acts of 1985 directs the Commissioner of Correction to report quarterly on the status of overcrowding in state and county facilities. This statute calls for the following information:

**Such report shall include, by facility, the average daily census for the period of the report and the actual census on the first and last days of the report period. Said report shall also contain such information for the previous twelve months and a comparison to the rated capacity of such facility.**

This report presents the required statistics for the first quarter of 2005.

---

This report prepared by Pamela McLaughlin, of the Research and Planning Division, is based on daily count sheets.

## **2005 First Quarter Report**

### **Table of Contents**

Table of Contents		3
Technical Notes		4
Abbreviations		5
Table 1.	Population in Department of Correction Facilities, January 3, 2005 to March 28, 2005	6
Table 2.	Population in Department of Correction Facilities, January 5, 2004 to December 27, 2004	7
Table 3.	Population in County Correctional Facilities by County, January 3, 2005 to March 28, 2005	8
Table 4.	Population in County Correctional Facilities by Facility, January 3, 2005 to March 28, 2005	8
Table 5.	Population in County Correctional Facilities by County, January 5, 2004 to December 28, 2004	9
Table 6.	Population in County Correctional Facilities by Facility, January 5, 2004 to December 28, 2004	9
Figure 1.	DOC Sentenced Population, First Quarters of 2004 and 2005	10
Figure 2.	HOC Population, First Quarters of 2004 and 2005	10
Table 7.	Quarterly DOC Court Commitments by Sex, 2004 and 2005	11
Figure 3.	Quarterly DOC Court Commitments by Sex, 2004 and 2005	11

## Technical Notes, 1996 to Present<sup>1</sup>

- The official capacity or custody level designation for each facility can change for a number of reasons, e.g. expansion of facility beds, decrease of facility beds due to fire, or changes in contracts with vendors. In all tables, the capacity and custody level reflects the status at the end of the reporting period. The design capacity is reported for correctional facilities in Tables 1 through 6.
- State inmates housed in the Hampshire County contract program are included in the county population tables, as are all other state inmates housed in county facilities.
- Nashua Street inmates housed at other facilities are reported in the counts for the facilities in which they are in custody.
- On May 18, 2000, the Braintree Alternative Center was temporarily closed for renovations by the Norfolk County Sheriff's Office. All inmates were transferred to the minimum security Pre-Release Center in Dedham.
- As of September 15, 2000, Longwood Treatment Center, male population, has been moved to the Massachusetts Boot Camp and the women were transferred to facilities housing female populations.
- As of September 22, 2000, Massachusetts Boot Camp no longer holds any medium security inmates.
- Due to DOC policy modification, the security level of Boston State Pre-Release was changed from Security Level 2 to Security Level 3/2 during the third quarter 2001.
- Effective November 16, 2001, NCCI Gardner added 30 beds to Security Level 3, per policy 101.
- May 20, 2002, NECC changed from a Security Level 3 to Level 3/2. The design capacity for Security Level 3 is 62 and for Security Level 2, the design capacity is 88.
- May 20, 2002, Pondville Correctional Center changed from a Security Level 3 to Level 3/2 with a design capacity of 100.
- June 10, 2002, South Middlesex Correctional Center changed to a facility for female offenders.
- June 22, 2002, Old Colony Correctional Center added a Level 3 housing unit. The design capacity for Security Level 5 is 480 and for Security Level 3, the design capacity is 100.
- On June 30, 2002, the following institutions were closed; SECC (Medium), Hodder Cottage @ Framingham, MCI-Lancaster, The Massachusetts Boot Camp and the Addiction Center @ SECC.
- As of July 1, 2002, the Massachusetts Boot Camp will now be known as the Massachusetts Alcohol and Substance Abuse Center (MASAC). Within MASAC is the Longwood Treatment Center Program, relocated on September 15, 2000. This program serves individuals incarcerated for operating under the influence of alcohol. Because the inmates are predominantly county sentenced inmates, the inmate count and bed capacity is also included in Tables 3 and 4.
- The Treatment Center includes both civil and criminal populations.
- As of July 1, 2002, two housing units remain open at MCI-Shirley Minimum with a design capacity of 92.
- Within MASAC, The Longwood Treatment Center Program was terminated on July 1, 2003, the last inmate to leave the facility was on September 8, 2003.
- On past Quarterly Overcrowding Reports, NCCI-Gardner (Minimum) was inadvertently shown under Security Level 3/2 instead of Level 3. This problem has been rectified.
- Effective February 5, 2004, Boston State Pre-Release Center had a change in design capacity. The new capacity is 150. 100 beds are Pre-Release and 50 beds are Minimum.

- On April 18, 1995, new security level designations were established according to 103 DOC 101 Correctional Institutions/Custody Levels policy which states

**Custody Levels:**

- **Level One.** The least restrictive in the department and is reserved only for those inmates who are at the end of their sentence and have been identified as posing little to no threat to the community. Supervision is minimal and indirect.

- **Level Two.** A custody level in which both design/construction as well as inmate classification reflect the goal of restoring to the inmate maximum responsibility and control of their own behavior and actions prior to their release. Direct supervision of these inmates is not required, but intermittent observation may be appropriate under certain conditions. Inmates within this level may be permitted to access the community unescorted to participate in programming to include, but not limited to, work release, educational release, etc.

- **Level Three.** A custody level in which both the design/construction as well as inmate classification reflect the goal of returning to the inmate a greater sense of personal responsibility and autonomy while still providing for supervision and monitoring of behavior and activity. Inmates within this security level are not considered a serious risk to the safety of staff, inmates or to the public. Program participation is mandated and geared toward their potential reintegration into the community. Access to the community is limited and under constant direct staff supervision.

- **Level Four.** A custody level in which both the design/construction as well as inmate classification reflect the goal of restoring to the inmate some degree of responsibility and control of their own behavior and actions, while still insuring the safety of staff and inmates. Design/construction is generally characterized by high security parameters and limited use of internal physical barriers. Inmates at this level have demonstrated the ability to abide by rules and regulations and require intermittent supervision. However, behavior in the community, i.e., criminal sentence and/or the presence of serious outstanding legal matters, indicate the need for some control and for segregation from the community. Job and program opportunities exist for all inmates within the perimeter of the facility.

- **Level Five.** A custody level in which design/construction as well as inmate classification reflect the need to provide maximum external and internal control and supervision of inmates. Inmates accorded to this status may present an escape risk or pose a threat to other inmates, staff, or the orderly running of the institution, however, at a lesser degree than those at level 6. Supervision remains constant and direct. Through an inmates willingness to comply with institutional rules and regulations, increased job and program opportunities exist.

- **Level Six.** A custody level in which both design/construction as well as inmate classification reflect the need to provide maximum external and internal control and supervision of inmates primarily through the use of high security parameters and extensive use of internal physical barriers and check points. Inmates accorded this status present serious escape risks or pose serious threats to themselves, to other inmates, to staff, or the orderly running of the institution. Supervision of inmates is direct and constant.

## Abbreviations

AC	Addiction Center	NECC	Northeastern Correctional Center
ADP	Average Daily Population	NCCI	North Central Correctional Institution at Gardner
ATU	Awaiting Trial Unit	OSCC	Old Colony Correctional Center
CRS	Contract Residential Services Includes Charlotte House, and Houston House	OUI	Operating Under the Influence
DDU	Departmental Disciplinary Unit	PRC	Pre-Release Center
DOC	Department of Correction	SBCC	Souza-Baranowski Correctional Center
DRNCAC	David R. Nelson Correctional Addiction Center	SECC	Southeastern Correctional Center
DSU	Departmental Segregation Unit	SDPTC	Sexually Dangerous Person Treatment Center
HOC	House Of Correction	SMCC	South Middlesex Correctional Center(formerly SMPRC)
LCAC	Lawrence Correctional Alternative Center	SH	State Hospital
MASAC	Massachusetts Alcohol and Substance Abuse Center		

**Table 1 provides the DOC figures for the first quarter of 2005.** As this table indicates, the DOC population (excluding Bridgewater SH, SDPTC and county inmates at the Massachusetts Alcohol and Substance Abuse Center) increased by 70 inmates, from the first day of the first quarter to the last day of the quarter. At the end of the quarter, the DOC operated with 8,747 inmates in the system, and the average daily population was 8,703 with a design capacity of 6,754. Thus, the DOC operated at 129 percent of design capacity.

**Population in DOC Facilities, January 3, 2005 to March 28, 2005**

<b>Custody Level/Facility</b>	<b>Avg. Daily Population</b>	<b>Beginning Population</b>	<b>Ending Population</b>	<b>Design Capacity</b>	<b>% ADP Capacity</b>
<b>Custody Level 6</b>					
Cedar Junction	605	568	611	633	96%
SBCC	1,009	1,015	1,001	1,024	99%
Framingham –ATU	175	160	185	64	273%
<b>Custody Level 5</b>					
OCCC	678	715	654	480	141%
<b>Custody Level 4</b>					
Bay State	287	283	286	266	108%
Concord	1,060	1,029	1,100	614	173%
Framingham	453	450	461	388	117%
Norfolk	1,423	1,429	1,420	1,084	131%
Shirley-Medium	1,066	1,078	1,073	720	148%
NCCI	947	950	956	568	167%
<b>Sub-Total</b>	<b>7,703</b>	<b>7,677</b>	<b>7,747</b>	<b>5,841</b>	<b>132%</b>
<b>Custody Level 3</b>					
NCCI	29	29	30	30	97%
Plymouth	149	151	149	151	99%
Shirley Minimum	49	49	50	92	53%
OCCC Minimum	106	103	105	100	106%
<b>Custody Level 3/2</b>					
Boston State	96	94	94	150	64%
NECC	252	255	253	150	168%
Pondville	195	194	194	100	195%
SMCC	119	119	120	125	95%
<b>Sub-Total</b>	<b>995</b>	<b>994</b>	<b>995</b>	<b>898</b>	<b>111%</b>
<b>Custody Level 1</b>					
Houston House	5	6	5	15	33%
<b>Sub-Total</b>	<b>5</b>	<b>6</b>	<b>5</b>	<b>15</b>	<b>33%</b>
<b>Total</b>	<b>8,703</b>	<b>8,677</b>	<b>8,747</b>	<b>6,754</b>	<b>129%</b>
<b>Custody Level 4</b>					
State Hospital@Bridgewater	333	337	334	227	147%
*Treatment Center	624	626	621	561	111%
<b>Custody Level 3</b>					
MASAC	164	154	184	236	69%
<b>Sub-Total</b>	<b>1,121</b>	<b>1,117</b>	<b>1,139</b>	<b>1,024</b>	<b>109%</b>
<b>Grand Total</b>	<b>9,824</b>	<b>9,794</b>	<b>9,886</b>	<b>7,778</b>	<b>126%</b>
Houses of Correction	6	6	6	n.a	n.a
Federal Prisons	64	64	64	n.a	n.a
Inter-State Contract	605	568	611	633	96%

(\*See Technical Notes)

**Table 2 provides the DOC figures for the previous twelve months – i.e., for the period January 5, 2004 to December 27, 2004.** These figures indicate that the DOC population decreased by 109 inmates over this twelve month period (excluding AC, Bridgewater SH, SDPTC and inmates at the Massachusetts Alcohol and Substance Abuse Center), from 8,766 in January, to 8,657 in December 2004.

**Population in DOC Facilities, January 5, 2004 to December 27, 2004**

<b>Custody Level/Facility</b>	<b>Avg. Daily Population</b>	<b>Beginning Population</b>	<b>Ending Population</b>	<b>Design Capacity</b>	<b>% ADP Capacity</b>
<b>Custody Level 6</b>					
Cedar Junction	625	714	565	633	99%
SBCC	995	164	1,013	1,024	97%
Framingham – ATU	199	985	161	64	311%
<b>Custody Level 5</b>					
OCCC	745	769	705	480	155%
<b>Custody Level 4</b>					
Bay State	293	296	284	266	110%
Concord	1,078	972	1,028	614	176%
Framingham	460	422	451	388	119%
Norfolk	1,433	1,443	1,423	1,084	132%
Shirley-Medium	1,079	1,075	1,076	720	150%
NCCI	962	965	949	568	169%
<b>Sub-Total</b>	<b>7,869</b>	<b>7,805</b>	<b>7,655</b>	<b>5,841</b>	<b>135%</b>
<b>Custody Level 3</b>					
NCCI	29	30	30	30	97%
Plymouth	172	188	151	151	114%
Shirley Minimum	47	46	49	92	51%
OCCC Minimum	104	107	107	100	104%
<b>Custody Level 3/2</b>					
Boston State	93	92	94	55	169%
NECC	224	206	255	150	149%
Pondville	188	187	190	100	188%
SMCC	99	102	120	125	79%
<b>Sub-Total</b>	<b>956</b>	<b>958</b>	<b>996</b>	<b>803</b>	<b>119%</b>
<b>Custody Level 1</b>					
Houston House	5	3	6	15	33%
<b>Sub-Total</b>	<b>5</b>	<b>3</b>	<b>6</b>	<b>15</b>	<b>33%</b>
<b>Total</b>	<b>8,830</b>	<b>8,766</b>	<b>8,657</b>	<b>6,659</b>	<b>133%</b>
<b>Custody Level 4</b>					
State Hospital@Bridgewater	337	324	337	227	148%
*Treatment Center	598	573	625	561	107%
<b>Custody Level 3</b>					
MASAC	184	140	161	236	78%
<b>Sub-Total</b>	<b>1,119</b>	<b>1,037</b>	<b>1,123</b>	<b>1,024</b>	<b>109%</b>
<b>Grand Total</b>	<b>9,949</b>	<b>9,803</b>	<b>9,780</b>	<b>7,683</b>	<b>129%</b>
Houses of Correction	352	428	315	n.a.	n.a.
Federal Prisons	5	5	6	n.a.	n.a.
Inter-State Contract	69	71	64	n.a.	n.a.

(\*See technical notes)

**Table 3 presents the county figures for the first quarter of 2005.** The county population increased by 372 inmates, or 3%, from the first day of the first quarter to the last day of the quarter. At the end of the quarter, the county system operated with 12,506 inmates, with an average daily population of 12,326 in facilities with a total design capacity of 8,022. Thus, the county system operated at 154 percent of design capacity.

**Population in County Correctional Facilities by County,  
January 3, 2005 to March 28, 2005**

<b>Facility</b>	<b>Avg. Daily Population</b>	<b>Beginning Population</b>	<b>Ending Population</b>	<b>Design Capacity</b>	<b>% ADP Capacity</b>
Barnstable	358	358	386	110	325%
Berkshire	324	311	330	116	279%
Bristol	1,211	1,228	1,220	610	199%
Dukes	29	28	26	19	153%
Essex	1,398	1,387	1,407	635	220%
Franklin	188	190	189	63	298%
Hampden	1,781	1,763	1,813	1,303	137%
Hampshire	259	248	271	248	104%
Middlesex	1,118	1,088	1,147	1,035	108%
Norfolk	558	534	592	354	158%
Plymouth	1,461	1,458	1,464	1,140	128%
Suffolk	2,329	2,250	2,341	1,599	146%
Worcester	1,312	1,291	1,320	790	166%
<b>Total</b>	<b>12,326</b>	<b>12,134</b>	<b>12,506</b>	<b>8,022</b>	<b>154%</b>

**Table 4 presents the county figures for the first quarter of 2005.** The following table presents a breakdown of multi-facility counties, by facility.

**Population in County Correctional Facilities by Facility,  
January 3, 2005 to March 28, 2005**

<b>Facility</b>	<b>Avg. Daily Population</b>	<b>Beginning Population</b>	<b>Ending Population</b>	<b>Design Capacity</b>	<b>% ADP Capacity</b>
<b>Bristol County</b>					
Bristol Ash Street	188	193	179	206	91%
Bristol Dartmouth	1,023	1,035	1,041	304	337%
Bristol DRNCAC	-	-	-	100	0%
<b>Essex County</b>					
Essex Middleton	1,074	1,109	1,074	500	215%
Essex LCAC	324	278	333	135	240%
<b>Hampden County</b>					
Hampden	1,609	1,594	1,637	1,178	137%
Hampden OUI	172	169	176	125	138%
<b>Middlesex County</b>					
Middlesex Cambridge	288	295	279	161	179%
Middlesex Billerica	830	793	868	874	95%
<b>Norfolk County</b>					
Norfolk Dedham	558	534	592	302	185%
Norfolk Braintree	-	-	-	52	0%
<b>Suffolk County</b>					
Suffolk Nashua Street	639	619	647	453	141%
Suffolk South Bay	1,690	1,631	1,694	1,146	147%

**Table 5 presents the county figures for the previous twelve months.** These figures indicate that the county population decreased by 266, or (-2%), inmates over this twelve month period, from 12,455 in January, to 12,189 in December 2004.

**Population in County Correctional Facilities by County,  
January 5, 2004 to December 28, 2004**

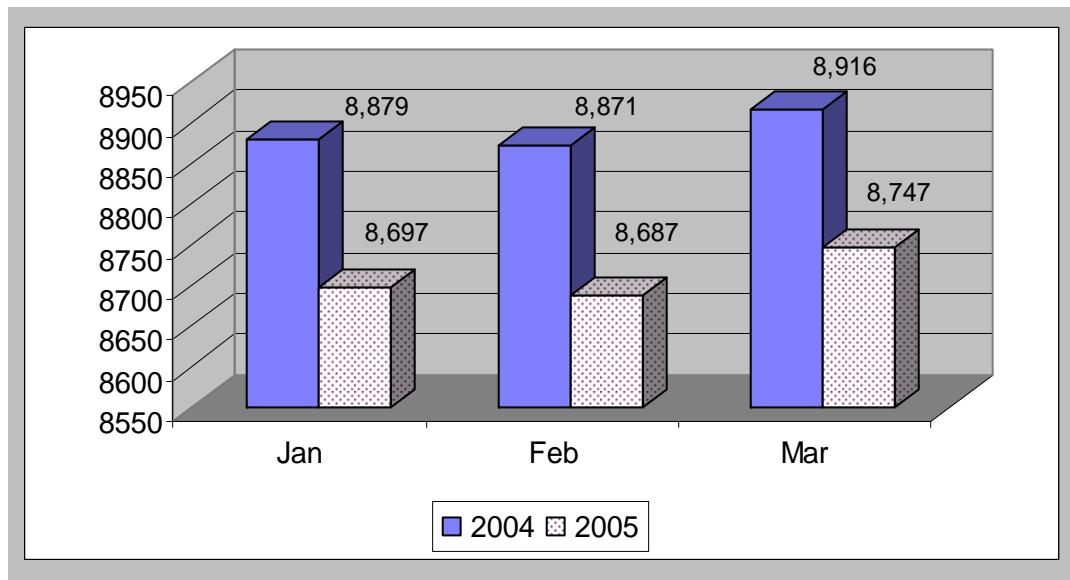
<b>Facility</b>	<b>Avg. Daily Population</b>	<b>Beginning Population</b>	<b>Ending Population</b>	<b>Design Capacity</b>	<b>% ADP Capacity</b>
Barnstable	321	307	344	110	292%
Berkshire	334	325	305	116	288%
Bristol	1,222	1,179	1,230	610	200%
Dukes	25	24	27	19	132%
Essex	1,444	1,350	1,384	635	227%
Franklin	175	189	175	63	278%
Hampden	1,856	1,844	1,792	1,303	142%
Hampshire	272	266	256	248	110%
Middlesex	1,162	1,114	1,078	1,035	112%
Norfolk	550	546	532	354	155%
Plymouth	1,532	1,591	1,460	1,140	134%
Suffolk	2,408	2,396	2,311	1,599	151%
Worcester	1,297	1,324	1,295	790	164%
<b>Total</b>	<b>12,598</b>	<b>12,455</b>	<b>12,189</b>	<b>8,022</b>	<b>157%</b>

**Table 6 presents the county figures for the previous twelve months.** The following table presents a breakdown of multi-facility counties, by facility.

**Population in County Correctional Facilities by Facility,  
January 5, 2004 to December 28, 2004**

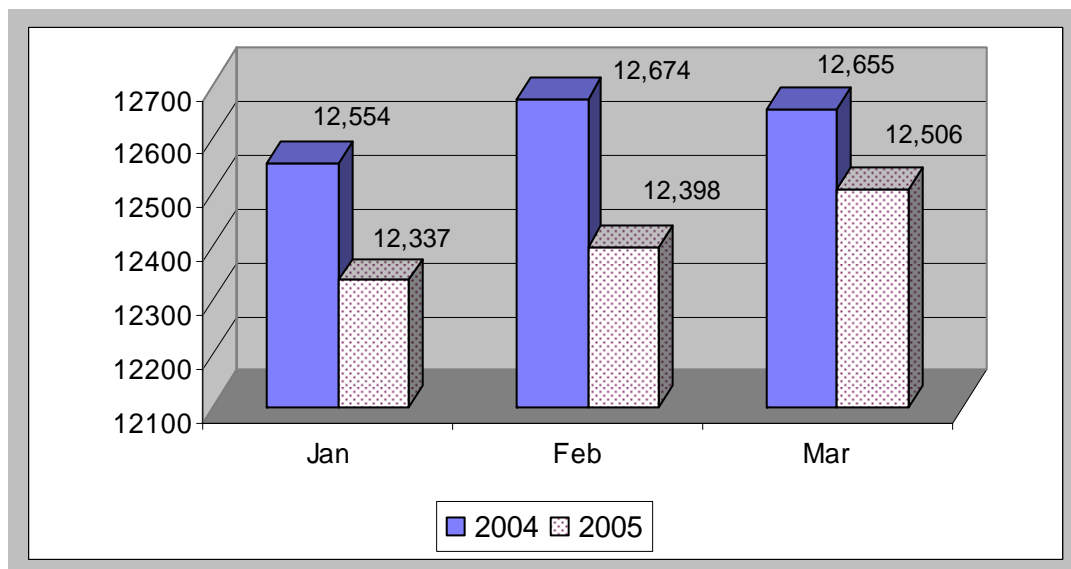
<b>Facility</b>	<b>Avg. Daily Population</b>	<b>Beginning Population</b>	<b>Ending Population</b>	<b>Design Capacity</b>	<b>% ADP Capacity</b>
<b>Bristol County</b>					
Bristol Ash Street	193	192	190	206	94%
Bristol Dartmouth	1,029	987	1,040	304	338%
Bristol DRNCAC	-	-	-	100	0%
<b>Essex County</b>					
Essex Middleton	1,107	1,009	1,089	500	221%
Essex LCAC	337	341	295	135	250%
<b>Hampden County</b>					
Hampden	1,685	1,672	1,619	1,178	143%
Hampden-OUI	171	172	173	125	137%
<b>Middlesex County</b>					
Middlesex Cambridge	304	291	282	161	189%
Middlesex Billerica	858	823	796	874	98%
<b>Norfolk County</b>					
Norfolk Dedham	550	546	532	302	182%
Norfolk Braintree	-	-	-	52	0%
<b>Suffolk County</b>					
Suffolk Nashua Street	655	664	613	453	145%
Suffolk South Bay	1,753	1,732	1,698	1,146	153%

**Figure 1**  
**DOC Sentenced Population, First Quarters of 2004 and 2005**



The graph above compares the DOC sentenced population for the first quarter in 2005 to that in 2004, by month. For January, 2005, the DOC population decreased by 182 inmates, or (-2%), compared with the same month of 2004; for February, the population decreased by 184 inmates, or (-2%); and for March the population decreased by 169 inmates, or (-2%).

**Figure 2**  
**HOC Population, First Quarters of 2004 and 2005**



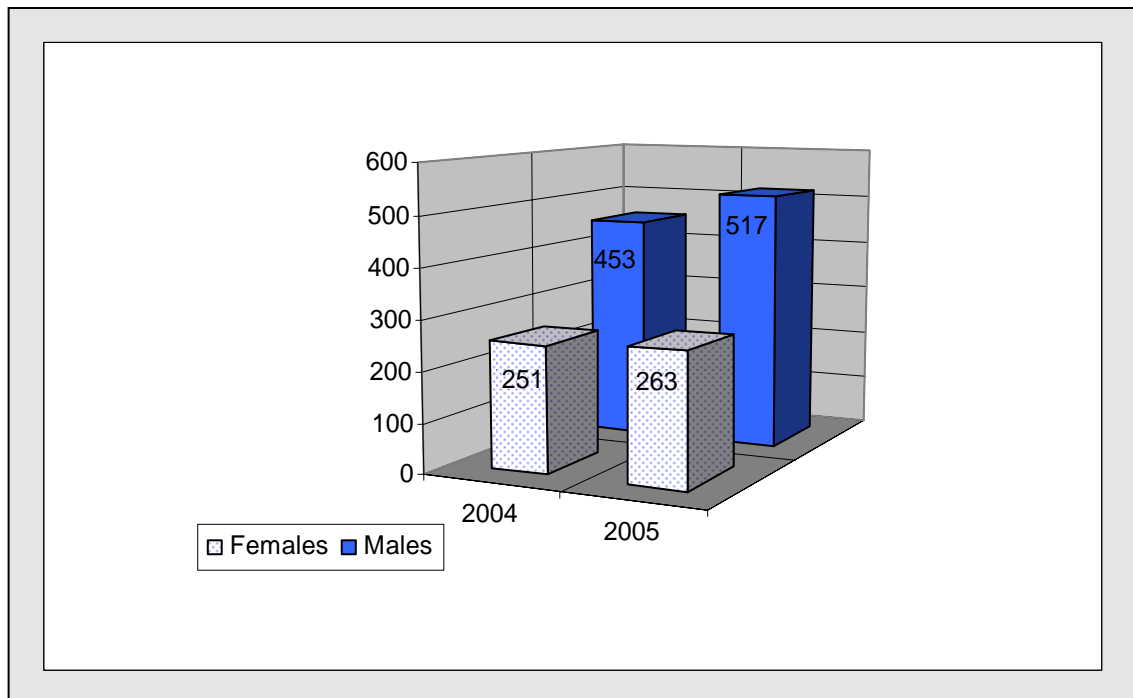
The graph above compares the HOC population for the first quarter in 2005 to that in 2004, by month. For January 2005, the HOC population decreased by 217 inmates, or (-2%), compared with the same month of 2004; for February, the population decreased by 276 inmates, or (-2%) and for March, the population decreased by 149 inmates or (-1%).

*Note:* Data for Figure 2 was taken from the end of the month daily count sheet compiled by the Classification Division

**Table 7 provides quarterly statistics on new, criminally sentenced, court commitments to the DOC for the first quarters of 2004 and 2005, by sex.** Overall, there was a increase of 76 new court commitments, or 11 percent, for 2005 in comparison with the number of new court commitments in 2004, from 704 to 780. Male commitments for the first quarter 2005 increased by 64 inmates, or 14 percent from 2004. Female commitments for the first quarter 2005 increased by 12 inmates, or 5 percent from 2004.

Quarterly DOC New Court Commitment by Sex			
	2004	2005	Difference
<b>Males</b>			
First Quarter	453	517	14%
<b>Females</b>			
First Quarter	251	263	5%
<b>Total</b>	704	780	11%

**Figure 3 provides a graphical representation** of the number of new, criminally sentenced court commitments to the DOC during the first quarters of 2004 and 2005, by sex.



*Note:* Data for Table 7 and Figure 3 were obtained from the DOC's Inmate Tracking Database and the IMS Database