



MASSACHUSETTS DEPARTMENT OF CORRECTION

Quarterly Report on the Status of Prison Overcrowding, Fourth Quarter of 2000

Submitted in Compliance with Chapter 799
Section 21 of the Acts of 1985

Argeo Paul Cellucci
Governor

Jane Swift
Lieutenant Governor

Jane Perlov
Secretary of Public Safety

Michael T. Maloney
Commissioner

Kathleen M. Dennehy
Deputy Commissioner

January, 2001

Approved by: State Purchasing Agent
Publication No: 14,602-09-45-10-10-86

2000 Fourth Quarter Report

Section Twenty-one of Chapter 799 of the Acts of 1985 directs the Commissioner of Correction to report quarterly on the status of overcrowding in state and county facilities. This statute calls for the following information:

Such report shall include, by facility, the average daily census for the period of the report and the actual census on the first and the last days of the report period. Said report shall also contain such information for the previous twelve months and a comparison to the rated capacity of such facility.

This report presents the required statistics for the fourth quarter of 2000.

This report was prepared by Pamela McLaughlin of the Research and Planning Division, and is based on daily count sheets prepared by the Classification Division.

2000 Fourth Quarter Report

Contents

Table of Contents	1
Technical Notes	2
Abbreviations	3
Table 1. Population in Department of Correction Facilities, October 2, 2000 to December 29, 2000	4
Table 2. Population in Department of Correction Facilities, October 1, 1999 to September 29, 2000	5
Table 3. Population in County Correctional Facilities by County, October 2, 2000 to December 29, 2000	6
Table 4. Population in County Correctional Facilities by Facility, October 2, 2000 to December 29, 2000	6
Table 5. Population in County Correctional Facilities by County, October 1, 1999 to September 29, 2000	7
Table 6. Population in County Correctional Facilities by Facility, October 1, 1999 to September 29, 2000	7
Figure 1. DOC Sentenced Population, Fourth Quarters of 1999 and 2000	8
Figure 2. HOC Population, Fourth Quarters of 1999 and 2000	8
Table 7. Quarterly DOC Court Commitments by Sex, 1999 and 2000	9
Figure 3. Quarterly DOC Court Commitments by Sex, 1999 and 2000	9

Technical Notes, 1996 to Present¹

¹ For technical notes prior to 1996, please refer to previous quarterly reports.

- The official capacity or custody level designation for each facility can change for a number of reasons, e.g. expansion of facility beds, decrease of facility beds due to fire, or changes in contracts with vendors. In all tables the capacity and custody level reflects the status at the end of the reporting period. The design capacity is reported for correctional facilities in Tables 1 through 6.
- On November 15, 1996, one hundred new modular beds were added to MCI Concord, increasing its design capacity to 614. Ninety-six modular beds were also added to MCI Norfolk, increasing its total to 1,084 beds. Pondville Correctional Center was reclassified from Custody Level 3/2 to Custody Level 3.
- Two hundred and forty-three new modular beds were added to Middlesex (Billerica) House of Correction on November 15, 1996, increasing its total to 874 beds, and the Middlesex county total to 1,035 beds.
- Due to changes in the Massachusetts General Law, DOC consolidated one unit at the Bridgewater Treatment Center and back-filled with general population inmates. These design capacity beds were placed on-line November 8, 1996 and first appeared on the November 12, 1996 daily count sheet. Three hundred additional beds were placed on-line during the third quarter of 1997.
- Due to a DOC policy modification, the security level of MCI-Shirley (Min) was changed from Security Level 3/2 to Security Level 3 during the first quarter of 1996 .
- Where relevant, the population figures for all facilities include both male and female inmates except as shown at Lancaster.
- State inmates housed in the Hampshire County contract program are included in the county population tables, as are all other state inmates housed in county facilities.
- Longwood Treatment Center is a specialized DOC facility which houses primarily individuals incarcerated for operating under the influence of alcohol. Because the inmates are predominantly county sentenced inmates, the inmate count and bed capacity are also included in Tables 3 and 4.
- Beginning with the second quarter of 1998 quarterly report, the following county correctional facilities are presented individually: Bristol Dartmouth, Bristol Ash Street, David R. Nelson Correctional Addiction Center, and Bristol Pre-Release in Bristol County; Essex Middleton and Essex Lawrence Correctional Alternative Center in Essex County; Middlesex Cambridge and Middlesex Billerica in Middlesex County; Norfolk Braintree, Norfolk Dedham, and Norfolk Contract in Norfolk County. Beginning with the third quarter of 1998 report, facilities for Suffolk and Hampden counties are presented individually.
- Nashua Street inmates housed at other facilities are reported in the counts for the facilities in which they are in custody.
- On October 22, 1997, Eastern Massachusetts Correctional Alcohol Center (EMCAC) was renamed the David R. Nelson Correctional Addiction Center (DRNCAC).
- Due to a DOC policy modification, the security level of Hodder House was changed from Security Level 2 to Security Level 3/2 during the first quarter of 2000 .
- On May 18, 2000, the Braintree Alternative Center was temporarily closed for renovations by the Norfolk County Sheriff's Office. All inmates were transferred to the minimum security Pre-Release Center in Dedham.
- As of September 15, 2000, Longwood Treatment Center is officially closed. The men were transferred to the Massachusetts Boot Camp and the women were transferred to facilities housing female populations.
- As of September 22, 2000, Massachusetts Boot Camp no longer holds any medium security inmates.
- On April 18, 1995, new security level designations were established according to 103 DOC 101 Correctional Institutions/Custody Levels policy which states

Custody Levels:

- **Level One.** The least restrictive in the department and is reserved only for those inmates who are at the end of their sentence and have been identified as posing little to no threat to the community. Supervision is minimal and indirect.

- **Level Two.** A custody level in which both design/construction as well as inmate classification reflect the goal of restoring to the inmate maximum responsibility and control of their own behavior and actions prior to their release. Direct supervision of these inmates is not required, but intermittent observation may be appropriate under certain conditions. Inmates within this level may be permitted to access the community unescorted to participate in programming to include, but not limited to, work release, educational release, etc.

- **Level Three.** A custody level in which both the design/construction as well as inmate classification reflect the goal of returning to the inmate a greater sense of personal responsibility and autonomy while still providing for supervision and monitoring of behavior and activity. Inmates within this security level are not considered a serious risk to the safety of staff, inmates or to the public. Program participation is mandated and geared toward their potential reintegration into the community. Access to the community is limited and under constant direct staff supervision.

- **Level Four.** A custody level in which both the design/construction as well as inmate classification reflect the goal of restoring to the inmate some degree of responsibility and control of their own behavior and actions, while still insuring the safety of staff and inmates. Design/construction is generally characterized by high security parameters and limited use of internal physical barriers. Inmates at this level have demonstrated the ability to abide by rules and regulations and require intermittent supervision. However, behavior in the community, i.e., criminal sentence and/or the presence of serious outstanding legal matters indicate the need for some control and for segregation from the community. Job and program opportunities exist for all inmates within the perimeter of the facility.

- **Level Five.** A custody level in which design/construction as well as inmate classification reflect the need to provide maximum external and internal control and supervision of inmates. Inmates accorded to this status may present an escape risk or pose a threat to other inmates, staff, or the orderly running of the institution, however, at a lesser degree than those at level 6. Supervision remains constant and direct. Through an inmates willingness to comply with institutional rules and regulations, increased job and program opportunities exist.

- **Level Six.** A custody level in which both design/construction as well as inmate classification reflect the need to provide maximum external and internal control and supervision of inmates primarily through the use of high security parameters and extensive use of internal physical barriers and check points. Inmates accorded this status present serious escape risks or pose serious threats to themselves, to other inmates, to staff, or the orderly running of the institution. Supervision of inmates is direct and constant. Inmates are confined to their cells at all times, except when they are removed for authorized activities. Inmates within their status, when removed from their cell, are typically under escort and in restraints.

Abbreviations

AC	- Addiction Center	OCCC	- Old Colony Correctional Center
ADP	- Average Daily Population	OUI	- Operating Under the Influence
ATU	- Awaiting Trial Unit	PPREP	- Pre-Parole Residential Environmental Phase Program
CRS	- Contract Residential Services Includes Charlotte House, and Houston House	PRC	- Pre-Release Center
DDU	- Departmental Disciplinary Unit	SBCC	- Souza-Baranowski Correctional Center
DOC	- Department of Correction	SECC	- Southeastern Correctional Center
DRNCAC	- David R. Nelson Correctional Addiction Center	SDPTC	- Sexually Dangerous Person Treatment Center
DSU	- Departmental Segregation Unit	SMCC	- South Middlesex Correctional Center (formerly SMPRC)
HOC	- House of Correction	SH	- State Hospital
LCAC	- Lawrence Correctional Alternative Center	TC	- Treatment Center (Longwood)
NECC	- Northeastern Correctional Center		
NCCI	- North Central Correctional Institution at Gardner		

Table 1 provides the DOC figures for the fourth quarter of 2000. As this table indicates, the DOC population (excluding Bridgewater SH, SDPTC, AC, Longwood TC, and county inmates at the Mass. Boot Camp) decreased by 195 inmates, or minus 2 percent, from the first day of the fourth quarter to the last day of the quarter. At the end of the quarter, the DOC operated with 9,584 inmates in the system, and the average daily population was 9,701 with a design capacity of 8,130. Thus, the DOC operated at 119 percent of design capacity.

Population in DOC Facilities, October 2, 2000 to December 29, 2000

Custody Level/ Facility	Avg. Daily Population	Beginning Population	Ending Population	Design Capacity	% ADP Capacity
Custody Level 6					
Cedar Junction	695	686	695	633	110%
SBCC	1,009	992	1,034	1,024	99%
Framingham-ATU	122	116	108	64	191%
Custody Level 5					
OCCC	712	707	710	488	146%
Custody Level 4					
Concord	894	893	876	614	146%
Framingham	497	502	476	388	128%
Norfolk	1,458	1,477	1,441	1,084	135%
NCCI	919	934	911	568	162%
SECC	648	614	659	456	142%
Bay State	284	287	282	266	107%
*Mass. Boot Camp	n.a.	n.a.	n.a.	128	0%
Shirley-Medium	1,035	1,053	1,022	720	144%
*Bridgewater SDPTC	316	346	303	345	92%
Sub-Total	8,589	8,607	8,517	6,778	127%
Custody Level 3					
Plymouth	110	123	106	151	73%
NECC	129	136	121	150	86%
SECC-Minimum	88	97	84	100	88%
Shirley-Minimum	253	269	244	403	63%
Pondville	131	138	124	100	131%
Custody Level 3/2					
Lancaster-Male	63	60	63	94	67%
Lancaster-Female	44	54	33	59	75%
SMCC	145	145	143	125	116%
Hodder House	11	6	11	35	31%
Sub-Total	974	1,028	929	1,217	80%
Custody Level 2					
Boston State	67	73	64	55	122%
Park Drive	40	42	38	50	80%
Custody Level 1					
Charlotte	10	7	10	15	67%
Houston House	10	9	13	15	67%
PPREP	11	13	13	n.a.	n.a.
Sub-Total	138	144	138	135	102%
Total	9,701	9,779	9,584	8,130	119%
Bridgewater SH	329	355	339	227	145%
Bridgewater SDPTC	225	221	232	216	104%
Bridgewater AC	95	76	90	214	44%
*Longwood TC	42	n.a.	61	125	34%
Sub-Total	691	652	722	782	88%
Grand Total	10,392	10,431	10,306	8,912	117%
Houses of Correction	555	586	528	n.a.	n.a.
Federal Prisons	7	8	6	n.a.	n.a.
Inter-State Contract	87	88	88	n.a.	n.a.

(* See Technical Notes)

Table 2 provides the DOC figures for the previous twelve months - i.e., for the period October 1, 1999 to September 29, 2000. These figures indicate that the DOC population decreased by 188, or minus 2 percent,

over this twelve month period (excluding Bridgewater SH, SDPTC, AC, Longwood TC, and county inmates at the Mass. Boot Camp), from 9,960 in October, 1999 to 9,772 in September, 2000.

Population in DOC Facilities, October 1, 1999 to September 29, 2000					
Custody Level/ Facility	Avg. Daily Population	Beginning Population	Ending Population	Design Capacity	% ADP Capacity
Custody Level 6					
Cedar Junction	631	577	686	633	100%
SBCC	968	843	987	1,024	95%
Framingham-ATU	130	137	129	64	203%
Custody Level 5					
OSCC	716	728	706	488	147%
Custody Level 4					
Concord	933	1,150	885	614	152%
Framingham	494	476	500	388	127%
Norfolk	1,492	1,488	1,479	1,084	138%
NCCI	952	960	933	568	168%
SECC	364	302	609	456	80%
Bay State	293	296	287	266	110%
Mass. Boot Camp	80	112	n.a.	128	63%
Shirley-Medium	1,083	1,095	1,054	720	150%
*Bridgewater SDPTC	346	348	346	345	100%
Sub-Total	8,482	8,512	8,601	6,778	125%
Custody Level 3					
Plymouth	132	150	121	151	87%
NECC	165	201	136	150	110%
SECC-Minimum	98	94	97	100	98%
Shirley-Minimum	266	281	269	403	66%
Pondville	151	176	138	100	151%
Custody Level 3/2					
Lancaster-Male	99	112	60	94	105%
Lancaster-Female	55	58	52	59	93%
SMCC	174	185	146	125	139%
Hodder House	17	30	6	35	49%
Sub-Total	1,157	1,287	1,025	1,217	95%
Custody Level 2					
Boston State	81	90	74	55	147%
Park Drive	44	47	43	50	88%
Custody Level 1					
Charlotte	11	9	8	15	73%
Houston House	9	11	8	15	60%
PPREP	9	4	13	n.a.	n.a.
Sub-Total	154	161	146	135	114%
Total	9,793	9,960	9,772	8,130	120%
Bridgewater SH	346	339	356	227	152%
Bridgewater SDPTC	195	175	221	216	90%
Bridgewater AC	90	94	84	214	42%
Longwood TC	101	135	n.a.	125	81%
Sub-Total	732	743	661	782	94%
Grand Total	10,525	10,703	10,433	8,912	118%
Houses of Correction	592	628	591	n.a.	n.a.
Federal Prisons	18	23	8	n.a.	n.a.
Inter-State Contract	195	249	88	n.a.	n.a.

(* See Technical Notes)

Table 3 presents the county figures for the fourth quarter of 2000. The county population decreased by 487 inmates, or minus 4 percent, from the first day of the fourth quarter to the last day of the quarter. At the

end of the quarter, the county system operated with 10,982 inmates, with an average daily population of 11,428 in facilities with a total design capacity of 8,356. Thus, the county system operated at 137 percent of design capacity.

Population in County Correctional Facilities by County, October 2, 2000 to December 29, 2000					
Facility	Avg. Daily Population	Beginning Population	Ending Population	Design Capacity	% ADP Capacity
Barnstable	231	244	214	110	210%
Berkshire	216	215	225	116	186%
Bristol	1,022	1,030	1,002	666	153%
Dukes	31	30	30	19	163%
Essex	1,289	1,341	1,223	635	203%
Franklin	151	146	143	63	240%
Hampden	1,707	1,677	1,628	1,303	131%
Hampshire	237	237	221	248	96%
Middlesex	1,206	1,181	1,153	1,035	117%
Norfolk	497	524	462	379	131%
Plymouth	1,399	1,388	1,375	1,140	123%
Suffolk	2,199	2,221	2,095	1,599	138%
Worcester	1,148	1,197	1,112	790	145%
*Longwood TC	42	n.a.	61	125	34%
Mass. Boot Camp	53	38	38	128	41%
Total	11,428	11,469	10,982	8,356	137%

Table 4 presents the county figures for the fourth quarter of 2000. The following table presents a breakdown of multi-facility counties, by facility.

Population in County Correctional Facilities by Facility, October 2, 2000 to December 29, 2000					
Facility	Avg. Daily Population	Beginning Population	Ending Population	Design Capacity	% ADP Capacity
Bristol County					
Bristol Ash Street	180	173	177	206	87%
Bristol Dartmouth	719	726	710	304	237%
Bristol DRNCAC	70	76	71	100	70%
Bristol Pre-Release	53	55	44	56	95%
Essex County					
Essex Middleton	1,023	1,074	920	500	205%
Essex LCAC	266	267	303	135	197%
Hampden County					
Hampden	1,534	1,505	1,453	1,178	130%
Hampden-OUI	173	172	175	125	138%
Middlesex County					
Middlesex Cambridge	247	214	236	161	153%
Middlesex Billerica	959	967	917	874	110%
Norfolk County					
Norfolk Dedham	453	477	425	302	150%
*Norfolk Braintree	n.a.	n.a.	n.a.	52	0%
Norfolk Contract	44	47	37	25	176%
Suffolk County					
Suffolk Nashua Street	636	633	607	453	140%
Suffolk South Bay	1,563	1,588	1,488	1,146	136%

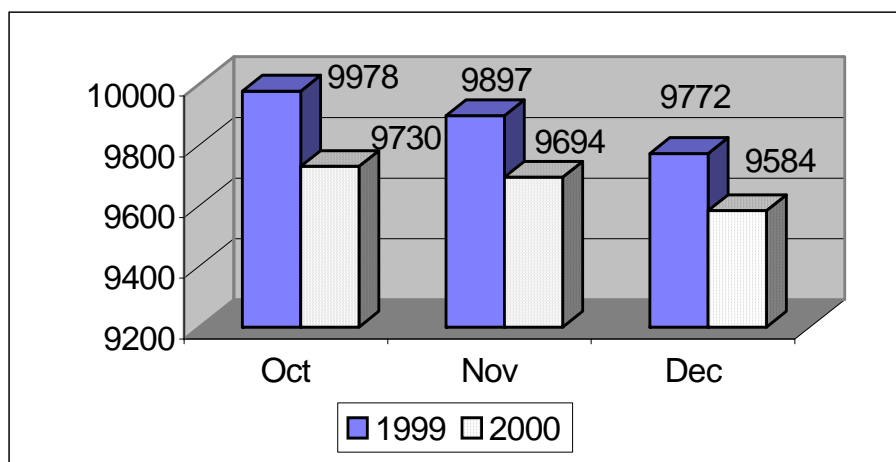
Table 5 presents the county figures for the previous twelve months. These figures indicate that the county population decreased by 675 inmates, or minus 6 percent, over this twelve-month period, from 12,182 in October, 1999, to 11,507 in September, 2000.

Population in County Correctional Facilities by County, October 1, 1999 to September 29, 2000					
Facility	Avg. Daily Population	Beginning Population	Ending Population	Design Capacity	% ADP Capacity
Barnstable	252	260	242	110	229%
Berkshire	198	207	216	116	171%
Bristol	1,064	1,079	1,053	666	160%
Dukes	32	31	30	19	168%
Essex	1,306	1,336	1,324	635	206%
Franklin	144	137	142	63	229%
Hampden	1,720	1,777	1,684	1,303	132%
Hampshire	237	255	239	248	96%
Middlesex	1,176	1,289	1,184	1,035	114%
Norfolk	555	580	520	379	146%
Plymouth	1,352	1,318	1,396	1,140	119%
Suffolk	2,253	2,372	2,219	1,599	141%
Worcester	1,218	1,340	1,214	790	154%
Longwood TC	101	135	n.a.	125	81%
Mass. Boot Camp	52	66	44	128	41%
Total	11,660	12,182	11,507	8,356	140%

Table 6 presents the county figures for the previous twelve months. The following table presents a breakdown of multi-facility counties, by facility.

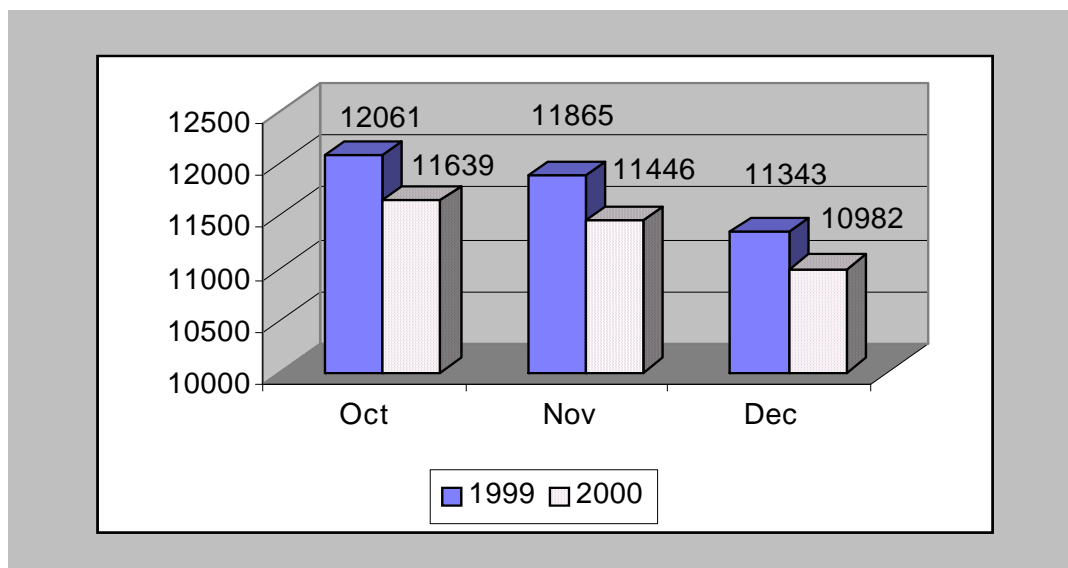
Population in County Correctional Facilities by Facility, October 1, 1999 to September 29, 2000					
Facility	Avg. Daily Population	Beginning Population	Ending Population	Design Capacity	% ADP Capacity
Bristol County					
Bristol Ash Street	158	154	185	206	77%
Bristol Dartmouth	758	773	735	304	249%
Bristol DRNCAC	75	87	76	100	75%
Bristol Pre-Release	73	65	57	56	130%
Essex County					
Essex Middleton	1,038	1,056	1,054	500	208%
Essex LCAC	268	280	270	135	199%
Hampden County					
Hampden	1,550	1,637	1,511	1,178	132%
Hampden-OUI	170	140	173	125	136%
Middlesex County					
Middlesex Cambridge	223	286	215	161	139%
Middlesex Billerica	953	1,003	969	874	109%
Norfolk County					
Norfolk Dedham	496	505	471	302	164%
*Norfolk Braintree	14	26	n.a.	52	27%
Norfolk Contract	45	49	49	25	180%
Suffolk County					
Suffolk Nashua Street	624	633	626	453	138%
Suffolk South Bay	1,629	1,739	1,593	1,146	142%

Figure 1.
DOC Sentenced Population, Fourth Quarters of 1999 and 2000



The graph above compares the DOC sentenced population for the fourth quarter in 1999 to that in 2000, by month. For October, 2000 the DOC population decreased by 248 inmates, or minus 2 percent, compared with the same month of 1999; for November, the population decreased by 203 inmates, or minus 2 percent; and for December the population decreased by 188 inmates, or minus 2 percent.

Figure 2.
HOC Population, Fourth Quarters of 1999 and 2000



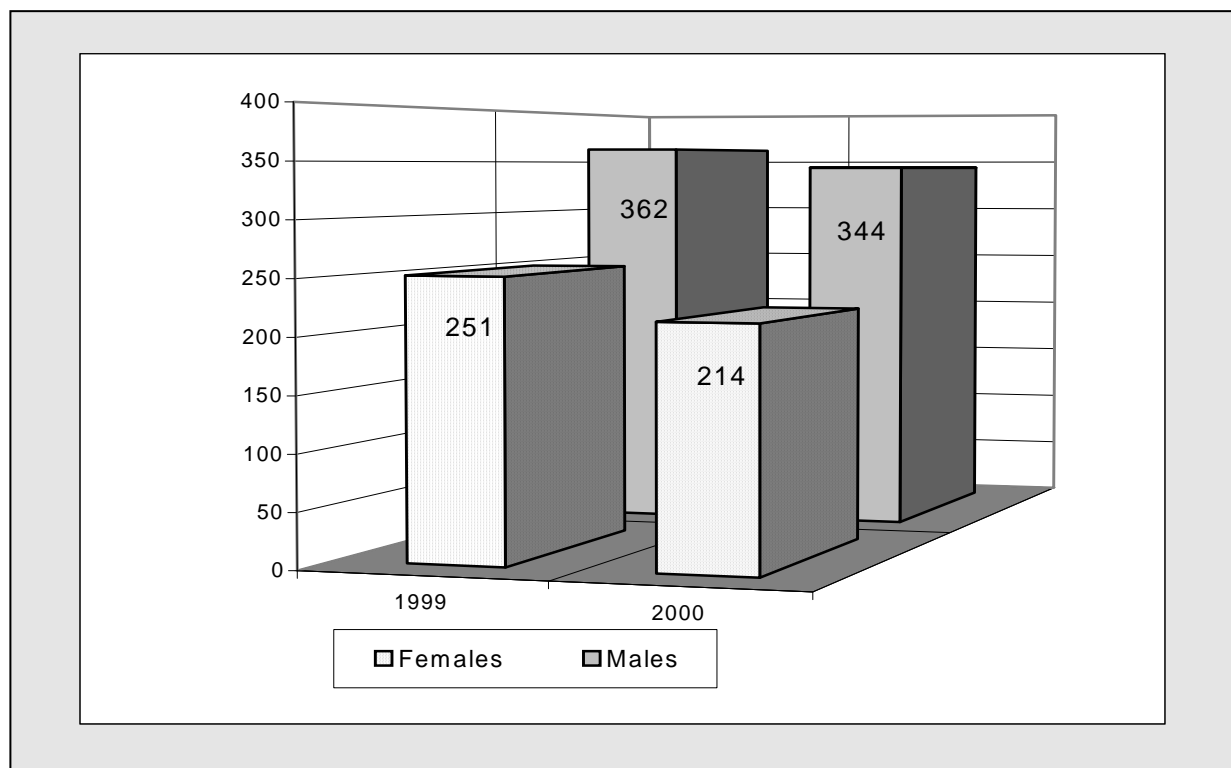
The graph above compares the HOC population for the fourth quarter in 1999 to that in 2000, by month. For October, 2000 the HOC population decreased by 422 inmates, or minus 3 percent, compared with the same month of 1999; for November, the population decreased by 419 inmates, or minus 4 percent; and for December, the population decreased by 361 inmates, or minus 3 percent.

Note: Data for Figures 1 and 2 were taken from the end of the month daily count sheet compiled by the Classification Division.

Table 7 provides quarterly statistics on new, criminally sentenced court commitments to the DOC for the fourth quarters of 1999 and 2000, by sex. Overall, there was a decrease of 281 new court commitments, or minus 11 percent for 2000 in comparison with the number of new court commitments in 1999, from 2640 to 2359. Male commitments for 2000 decreased by 243, or minus 14 percent from 1999. Female commitments for 2000 decreased by 38, or minus 4 percent compared to the number of commitments for 1999.

Quarterly DOC New Court Commitment by Sex			
	1999	2000	Difference
Males			
First Quarter	478	415	-13%
Second Quarter	417	371	-11%
Third Quarter	419	303	-28%
Fourth Quarter	362	344	-5%
Sub-Total	1676	1433	-14%
Females			
First Quarter	242	272	12%
Second Quarter	225	223	-1%
Third Quarter	246	217	-12%
Fourth Quarter	251	214	-15%
Sub-total	964	926	-4%
Total	2,640	2,359	-11%

Figure 3 provides a graphical representation of the number of new, criminally sentenced court commitments to the DOC during the fourth quarters of 1999 and 2000, by sex.



Note:

Data for Table 7 and Figure 3 were obtained from the DOC's Inmate Tracking database. For females committed after September 17, 2000, the information was obtained from IMS.