

***TAX EXPENDITURE BUDGET***

***FISCAL YEAR 2002***

***January 2001***

***Executive Office for Administration and Finance***

***Commonwealth of Massachusetts***

# **Fiscal Year 2002 Tax Expenditure Budget – Table of Contents**

---

## **I. Introduction to the Tax Expenditure Budget**

What Are Tax Expenditures?.....	1
Defining the Basic Tax Structure .....	2
Description of the Data.....	4
Data Limitations.....	4
Reading the Budget.....	5

## **II. The Personal Income Tax**

Personal Income Tax: Basic Structure.....	6
Computation of the Personal Income Tax.....	8
Types of Tax Expenditures under the Personal Income Tax.....	9
List of Personal Income Tax Expenditures.....	10

## **III. The Corporate Excise And Other Business Excises**

Corporate Excise: Basic Structure.....	27
Computation of Massachusetts Business Corporation Excise.....	29
Types of Tax Expenditures under the Corporate Excise.....	30
List of Corporate Excise Tax Expenditures.....	31

## **IV. Sales And Use Tax**

Sales and Use Tax: Basic Structure.....	41
Computation of Massachusetts Sales and Use Tax by Vendor.....	42
Types of Tax Expenditures under the Sales Tax.....	43
List of Sales and Use Tax Expenditures.....	43

## **Fiscal Year 2002 Tax Expenditure Budget – Table of Contents**

---

### **V. Appendices**

APPENDIX A: Recent Law Changes Affecting Tax Expenditures.....	56
APPENDIX B: Tax Expenditures Fiscal Year 2000-Fiscal Year 2002.....	58
APPENDIX C: Glossary.....	70

## **Fiscal Year 2002 Tax Expenditure Budget – Introduction**

---

While taxes are an essential source of revenue for all state economies, the manner in which they are imposed varies widely from state to state. In its simplest form, a tax is an across-the-board levy on a base, such as income, to which a specific rate applies and for which no modifications exist. Taxes are rarely levied in this manner, however. Instead, most state tax codes incorporate a number of exemptions, deductions, credits, and deferrals designed to encourage certain taxpayer activities or to limit the tax burden on certain types of individuals or endeavors. Known as "tax expenditures," these provisions can have a significant impact on state tax revenues.

This document offers a summary of the tax expenditures affecting three taxes from which Massachusetts derives the bulk of its revenues: the personal income tax, the corporate excise, and the sales and use tax. It also provides revenue estimates for each tax expenditure, as mandated by Massachusetts state law. Organized into five separate sections, this study analyzes all aspects of Massachusetts tax expenditures. Part I contains a detailed explanation of how we identify and estimate the costs of tax expenditure provisions in the tax code. In the next sections (Parts II - IV), we have provided detailed information about each of the three major tax types, including an explanation of how each tax is calculated and the ways in which that tax's basic structure is modified to produce the various types of tax expenditures. The tax expenditures for each tax are listed after the description of the tax.

Following the expenditure listings, Part V provides three appendices. One lists recent law changes that affect this year's tax expenditure budget; a second gives three-year tax expenditure estimates which are consistent with our most recent estimation methodology; the third is a glossary that defines terms used throughout the text. In reviewing this document it is important to remember that although a tax expenditure represents a deviation from the generally agreed-upon, or basic, structure of a given tax, determining whether a provision is a tax expenditure is not the same as making a judgment about its desirability. An element of the basic structure of a tax can be inequitable or have undesirable economic effects, just as a tax expenditure can. If so, it can be changed by legislative action just as a tax expenditure can.

The estimates of the costs of tax expenditures included in this volume are revised annually. As improved methodologies and data become available over the course of the year, some estimates may be reexamined and occasionally revised.

### **What Are Tax Expenditures?**

Tax expenditures are provisions in the tax code, such as exclusions, deductions, credits, and deferrals, that are designed to encourage certain kinds of activities or to aid taxpayers in special circumstances. When such provisions are enacted into the tax code, they reduce the amount of tax revenues that may be collected. In this sense, the fiscal effects of a tax expenditure are just like those of a direct government expenditure. Some tax expenditures involve a permanent loss of revenue, and thus are comparable to a payment by the government; others cause a deferral of revenue to the future, and thus are comparable to an interest-free loan to the taxpayer. Since tax expenditures are designed to accomplish certain public goals that otherwise might be met through direct expenditures, it seems reasonable to

## **Fiscal Year 2002 Tax Expenditure Budget – Introduction**

---

apply to tax expenditures the same kind of analysis and review that the appropriations budget receives.

It is essential to distinguish between those provisions of the tax code that represent tax expenditures and those that are part of the "basic structure" of a given tax. The basic structure is the set of rules that defines the tax; a tax expenditure is an exception to those rules. In general, most taxes have a series of features that define their basic structure. These features are:

1. A base, on which the tax is levied, such as net income, or a particular class of transactions;
2. A taxable unit, such as a person or a corporation;
3. A rate, to be applied to the base;
4. A definition of the geographic limits of the state's exercise of its tax jurisdiction; and
5. Provisions for the administration of the tax.

### **Defining the Basic Tax Structure**

A tax expenditure is a deviation from the generally agreed-upon, or basic, structure of a given tax. For example, the base of the sales tax includes all retail sales to final consumers. The exemption for sales of energy conservation equipment is an exception, created to encourage purchases of such equipment. The sales tax that is not collected because of the existence of this exemption, then, is a tax expenditure.

While this general definition seems straightforward enough, the task of compiling a comprehensive list of tax expenditures presents many conceptual problems. For example, some of the deductions and exemptions allowed under the tax statutes are not tax expenditures. The broad category of income tax deductions allowed for business expenses is not listed as a tax expenditure. Since the income tax is generally considered to be a tax on income net of the costs of producing that income, deductions for business expenses are taken against gross income and therefore occur prior to calculation of the tax base. In addition, tax provisions reflecting constitutional prohibitions, such as the prohibition on taxation of sales to the federal government, are considered parts of the basic tax structure and therefore are not properly considered tax expenditures. These distinctions are fairly simple, but more complex analytical questions quickly arise.

For example, deductions for the depreciation of property and equipment used in a trade or business are considered part of the basic tax structure because the use of productive assets is a legitimate cost of doing business. However, federal depreciation rules allow larger depreciation deductions in the early years of a property's useful life. These accelerated depreciation rules could be viewed as properly reflecting changing notions of obsolescence and thus as part of the basic tax structure; or the faster rates of depreciation could be considered a special adjustment in the tax base designed to provide an incentive for investment, and therefore a tax expenditure. Indeed, past federal tax expenditure budgets prepared by the Congressional Budget Office and versions prepared by the Treasury Department have disagreed on exactly this issue.

## Fiscal Year 2002 Tax Expenditure Budget – Introduction

---

We have adopted the point of view that accelerated depreciation is a tax expenditure. Although accelerated depreciation still allows the same total deduction for a piece of property, the rate of depreciation allowed in the early years is faster than would be permitted under traditional accounting principles. Generally, revenue cost estimates in this document for tax expenditures associated with accelerated depreciation rely on assumptions used in congressional federal tax expenditure analysis concerning ordinary depreciation rates.

We have chosen to view the rules for personal exemptions and for no tax status in the Commonwealth's personal income tax as provisions which help to define the income tax base, and thus as a part of the basic structure of the tax (much as the progressive rate structure of the federal income tax, which similarly reduces the tax burden on low-income people, is a part of its basic structure). The base of the tax is defined as net income above what is required for subsistence. Since personal exemptions help define the amount of income needed for subsistence, and therefore the base, they should not be classified as tax expenditures. According to this reasoning, exemptions allowed for dependents would also be considered part of the basic tax structure, since subsistence requirements increase with the size of the taxpayer's household. However, we note that this view of the tax structure did not always lead to easy conclusions. First, taxpayers are allowed exemptions for dependents even if those dependents have their own income and take personal exemptions for themselves. We have treated the use of the dependents' exemption as a tax expenditure. Second, the fact that the no tax status amount is greater than the personal exemption suggests that the intent behind the no tax status and personal exemptions goes beyond simple definition of an income base. Although personal exemptions and the no tax status are not listed in this document as tax expenditures, estimates for the revenue loss associated with these provisions are provided in an endnote.

The sales tax presents the most difficult case. The sales tax statute and its legislative history indicate that the established base of the tax is all "retail" sales. At a minimum, the sales tax exemptions for business purchases of component parts and of products to be resold appear to be provisions that help define which sales are considered non-retail sales, and therefore should not be classified as tax expenditures. However, it is difficult if not impossible to decide which other sales tax exemptions might also cover non-retail sales. For example, manufacturing companies are allowed an exemption from the sales tax for purchases of machinery used in the production process. Since this machinery is not a direct component part of any product being manufactured and is not purchased simply to be resold, it could be argued that the machinery purchase is a retail sale and that the machinery exemption is a tax expenditure. Others would argue that because these purchases are not purchases by the final consumers of an end product, and because they represent legitimate business expenses, these sales tax exemptions should not be considered tax expenditures.

The Massachusetts sales tax statute is filled with exemptions that do not follow a discernible pattern. For example, manufacturers are exempt from sales tax on machinery but not on motor vehicles, and construction firms are not fully exempt from sales tax on their equipment purchases. Because it is difficult to define the basic tax structure, the discussion of the sales tax in this document is not a conventional "tax expenditure analysis." Instead, virtually all of the exemptions from the sales tax are listed as tax expenditures.

## **Fiscal Year 2002 Tax Expenditure Budget – Introduction**

---

As stated in the introduction, the most important thing to remember is that making a judgment about whether a provision is a tax expenditure is not the same as making a judgment about its desirability. With this in mind, we have attempted to provide more rather than fewer tax expenditure estimates, so that necessary information is available for those charged with making policy judgments.

### **Description of the Data**

This budget should be considered part of an ongoing effort to list tax expenditures, describe their characteristics, and estimate their revenue costs. Each year, we attempt to improve upon the analysis presented in the prior year's tax expenditure budget. For purposes of comparison, we have provided an appendix containing updated tax expenditure estimates for the past two years as well as for Fiscal Year 2002.

Information collected by the Department of Revenue (DOR) from Massachusetts tax returns was an important source of data in this budget. Estimates made from these data tend to be the most reliable. Unfortunately, many tax expenditures cannot be estimated from DOR records. When a particular category of income is excluded from taxation, amounts often do not appear on tax records. This is especially likely to be the case for those tax expenditures brought about by "coupling" the state tax code to the federal code, since exclusions and some deductions are not reported explicitly, but are simply carried over to state tax calculations as part of the reporting of federal income. In such cases we have had to estimate a Massachusetts figure using national tax data, census information, sales statistics, and other information.

You will note that in several cases, this year's revenue estimate is very different from last year's. Revisions to the estimates occur for four reasons: we have new data sources, federal tax expenditure estimates on which we rely have changed, we have refined our estimation methodologies, or changes in Massachusetts tax law have modified existing estimates. In a few instances, more than one of these factors operate to explain the difference. All estimates are projections forward from a base year (which varies depending on the availability of data) to Fiscal Year 2002.

### **Data Limitations**

There are some additional caveats that the reader should keep in mind when reading this budget. Most revenue loss estimates have been made without taking into account how repeal of a provision might change taxpayer behavior. For example, if the sales tax exemption for a particular item were repealed, the item would become more expensive to consumers, so one would expect sales of that item to decline. The revenue gain from repealing the provision would be, therefore, somewhat less than if the level of sales for the affected items remained the same. On the other hand, some of the income not spent on that item might be spent on other taxable items. To the extent that consumers and businesses pay more taxes and have less income available for other purposes, the repeal of a tax expenditure might have much broader economic and revenue effects. Clearly, the full calculation of these effects is very difficult.

## **Fiscal Year 2002 Tax Expenditure Budget – Introduction**

---

Second, the interaction among different taxes and tax expenditures may be quite complex. Repealing some tax expenditures may increase or decrease the value of others. For example, increasing the no tax status amount would mean that fewer people would pay taxes, and thus fewer people would claim other exemptions. This would reduce the revenues lost through other exemptions.

Third, the revenue cost estimates do not generally reflect compliance factors which may significantly reduce revenues available from a tax expenditure repeal. In particular, where Massachusetts tax provisions are "coupled" with federal tax rules, audits of Massachusetts taxpayers generally compare state and federal returns. If Massachusetts tax provisions were "decoupled," taxpayers would have to make separate calculations for Massachusetts tax purposes, and these provisions would require special audit procedures. Compliance difficulties would certainly result.

And fourth, particular caution is appropriate with respect to the tax expenditure budget's totals for expenditures for particular taxes. Not only do these totals reflect the imprecision of the specific estimates, but they also omit those items for which no estimates were available. In consequence, particular totals may be substantially understated. At the same time, included in the totals, particularly with regard to the sales tax, are a number of substantial items that many analysts would regard, not as tax expenditures, but rather as features of the underlying tax itself. The general approach in preparing the tax expenditure budget has been to count questionable items as tax expenditures, so that information concerning them would be available for analysis. The result is that certain of the totals are higher than they would be under a more restrained analytic approach.

### **Reading the Budget**

In this document, tax expenditures and cost estimates are listed according to the taxes to which they pertain: personal income, corporate excise, and sales and use. Each of the three major taxes includes an introductory section with a description of the tax, followed by a listing of the tax expenditures for that tax. Each tax expenditure item includes a brief description, the cost estimate, a statutory citation, and an indication of the tax expenditure's type. Taxes on financial institutions, utilities and insurance companies are not treated separately, and the various special excises on motor fuels, cigarettes, and alcoholic beverages are not covered in this budget.



## **Fiscal Year 2002 Tax Expenditure Budget – Personal Income Tax**

---

Although income from professions, trades or employment was taxed throughout the nineteenth century under the local property tax, it was not until 1916, under the authority of Article 44 of the Amendments to the Massachusetts Constitution, that the Massachusetts personal income tax was enacted as a separate tax. Unlike most states with income taxes, Massachusetts applies flat rather than graduated rates, because Article 44 requires that all income of the same class be taxed at the same rate.

Generally, the Massachusetts personal income tax ties into the federal Internal Revenue Code as it was on January 1, 1998. To the extent that the Massachusetts tax takes federal law as its starting point, it adopts many federal tax expenditures.

The personal income tax is the state's largest revenue source, accounting for 57.6% of taxes collected in Fiscal Year 2000.

### **Personal Income Tax: Basic Structure**

**Tax Base:** The personal income tax base is gross income minus the costs of producing the gross income (trade or business expenses). Massachusetts gross income is defined as federal gross income with certain modifications. Effective January 1, 1996 it was divided into three classes: interest, dividends, and short-term capital gains ("Part A" income); long-term term capital gains ("Part C" income); and all other income ("Part B" income). Massachusetts taxpayers are entitled to a basic personal exemption which varies according to taxpayer status. The exempted amounts are considered to be outside the generally accepted tax base. They reflect the notion that income needed for bare subsistence should be free from tax. Thus, for the purposes of this document, these exemptions are not listed as tax expenditures. In addition, taxpayers whose income is below a specified level are entitled to "no tax status." For the same reason, this status is not listed as a tax expenditure. On the other hand, because policy makers are often interested in the effects of adjusting the dollar amounts for the personal exemptions and the no tax status, estimates are provided for them in endnote 3 to item 1.405 in the list of personal income tax expenditures.

**Taxable Unit:** Individuals are taxed separately, with the exception of married couples, who may file a joint return. The income of children is not aggregated with that of their parents. The income of trusts, estates and corporate trusts, including partnerships and associations with transferable shares, is also subject to the personal income tax.

**Rate Structure:** The rate of tax on Part B "earned" taxable income is 5.95%. Effective January 1, 1999 the rate on Part A "unearned" income is also 5.95%. Effective January 1, 2000, the rate on both Part A and Part B income drops to 5.85%, then to 5.60% on January 1, 2001, to 5.30% on January 1, 2002, and to 5.00% on January 1, 2003. All other things being equal, this reduction in tax rates (which are part of the basic tax structure) has the effect of reducing the value of tax expenditures, because when tax rates decline, so does the value of any exceptions to that basic structure.

## Fiscal Year 2002 Tax Expenditure Budget – Personal Income Tax

Effective January 1, 1996, Part C income, long-term capital gains, is subject to the following tax rates based on how long the assets are held:

<u>Holding Period</u>	<u>Tax Rate</u>
up to a year	12%
more than one, but less than two years	5%
more than two, but less than three years	4%
more than three, but less than four years	3%
more than four, but less than five years	2%
more than five, but less than six years	1%
more than six years	0%

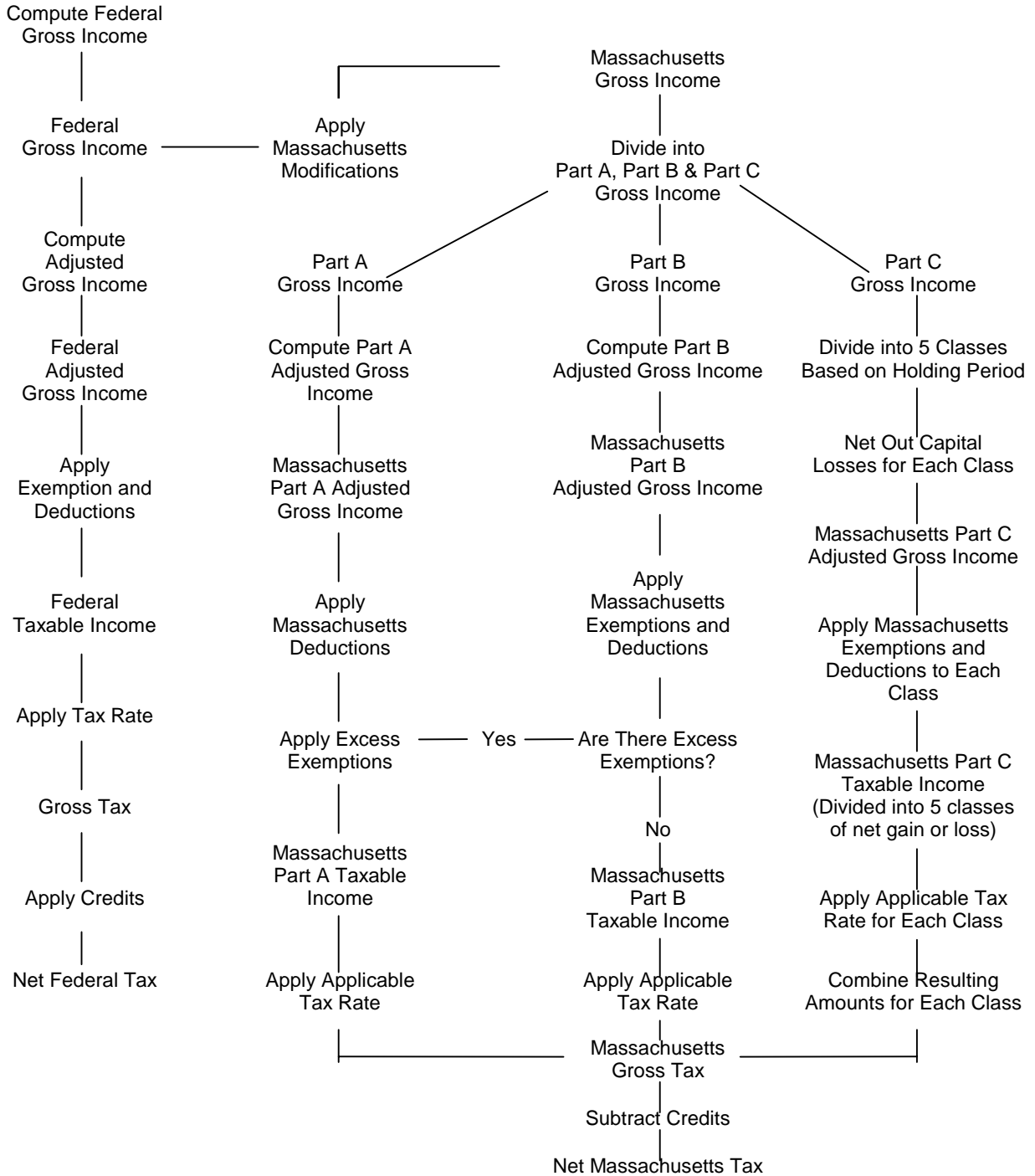
Assets acquired prior to January 1, 1996 are deemed to have been acquired on the later of January 1, 1995 or the actual date of acquisition.

**Taxable Period:** The taxable period is one year (or less), usually the calendar year. Income may be reported according to the cash or accrual method. Where property is sold on a deferred payment basis, gains may be reported in the years the payments are received. There is no Massachusetts provision for income averaging. Net capital losses may be carried forward to future years.

**Interstate and International Aspects:** Residents are taxed upon their entire income, whether derived from Massachusetts sources or elsewhere, without allocation or apportionment. Nonresidents are taxed only on income from sources within Massachusetts. A resident may take a limited credit against the Massachusetts income tax for income taxes due to other states, the District of Columbia, any territory or possession of the United States, or Canada or its provinces on any item of Massachusetts gross income.

# Fiscal Year 2002 Tax Expenditure Budget – Personal Income Tax

## Computation of the Personal Income Tax



## **Fiscal Year 2002 Tax Expenditure Budget – Personal Income Tax**

---

### **Types of Tax Expenditures under the Personal Income Tax**

The basic structure of the personal income tax can be modified in a number of different ways to produce tax expenditures. Brief explanations of the various types of tax expenditures follow:

**Exclusions from Gross Income:** Gross income is the starting point in the calculation of income tax liability and, in the absence of tax expenditures, would include all income received from all sources. Items of income that are excluded from gross income typically are not reported by the taxpayer on his or her tax return, and they escape taxation permanently.

**Deferrals of Gross Income:** Where an item of income is not included in gross income in the year when it is actually received, but is instead included in a later year, the result is a tax expenditure in the form of an interest-free loan from the state to the taxpayer in the amount of the tax payment that is postponed.

**Deductions from Gross Income:** Certain amounts are subtracted from gross income to arrive at adjusted gross income (AGI). Many of these deducted amounts reflect the costs of producing income (business expenses), and are not properly part of the income tax base. Such deductions are not tax expenditures. Other deductions which do not reflect business expenses constitute tax expenditures, which permit corresponding amounts of income to escape taxation permanently.

**Accelerated Deductions from Gross Income:** In a number of cases, taxpayers are allowed to deduct business expenses from gross income at a time earlier than such expenses would ordinarily be recognized under Generally Accepted Accounting Principles. The total amount of the permissible deduction is not increased, but it can be utilized more quickly to reduce taxable income. The result is to defer taxes, thus in effect occasioning an interest-free loan from the state to the taxpayer.

**Deductions from Adjusted Gross Income (AGI):** Taxable income results from the subtraction of certain deductions and exemptions from AGI. Certain of these subtracted items represent amounts of income necessary for subsistence; their exclusion is part of the basic structure of the income tax. Other subtracted items represent tax expenditures, which permit corresponding amounts of income to escape taxation permanently.

**Preferential Rates of Taxation:** Generally, all income from the same source is taxed at the same rate. When an item of income is taxed at a rate below the rate ordinarily applied to that class of income, a tax expenditure results. The result is equivalent to excluding a portion of the income from taxation.

**Credits Against Tax:** After a taxpayer's basic tax liability has been calculated by applying the tax rates to taxable income, the taxpayer may subtract certain credit amounts from this initial liability in determining the actual amount of taxes that must be paid. It is important to note that, whereas a one dollar exclusion or deduction results in a tax savings of only a few cents (one dollar times the applicable tax rate), a one dollar credit results in a one dollar tax savings.

## **Fiscal Year 2002 Tax Expenditure Budget – Personal Income Tax**

---

### **List of Personal Income Tax Expenditures**

#### **1.000 EXCLUSIONS FROM GROSS INCOME**

- 1.001 Exemption of Premiums on Accident and Accidental Death Insurance<sup>1</sup>  
Employer contributions for premiums on accident and accidental death insurance are not included in the income of the employee and are deductible by the employer.

Origin: IRC § 106

Estimate: \$1.4

- 1.002 Exemption of Premiums on Group-Term Life Insurance<sup>1</sup>  
Employer payments of employee group-term life insurance premiums for coverage up to \$50,000 per employee are not included in income by the employee and are deductible by the employer.

Origin: IRC § 79

Estimate: \$15.1

- 1.003 Exemption of Interest on Life Insurance Policy and Annuity Cash Value  
Interest which is credited annually on the cash value of a life insurance policy or annuity contract is not included in the income of the policy holder or annuitant. Only when a life insurance policy is surrendered before death or when annuity payments commence does the interest become subject to tax. (Interest on dividends left on deposit is taxable.)

Origin: IRC § 101

Estimate: \$178.8

- 1.004 Exemption of Employer Contributions for Medical Insurance Premiums and Medical Care<sup>1</sup>  
Employer contributions for medical insurance premiums and reimbursements for medical care are not included in the income of the employee and are deductible by the employer.

Origin: IRC §§ 105 and 106

Estimate: \$443.1

- 1.005 Exemption of Annuity or Pension Payments to Fire and Police Personnel  
Income from noncontributory annuities or pensions to certain retired fire and police personnel or their survivors is tax-exempt.

Origin: M.G.L. c. 32

Estimate: N.A.

- 1.006 Exemption of Distributions from Certain Contributory Pension and Annuity Plans<sup>2</sup>

Certain pensions and annuity distributions are tax-exempt under

## Fiscal Year 2002 Tax Expenditure Budget – Personal Income Tax

---

Massachusetts law. They are payments from contributory plans of the U.S. government, Massachusetts and its subdivisions, and other states which do not tax such income from Massachusetts. The nontaxation of the benefits in excess of contributions taxed by Massachusetts is a tax expenditure.

Origin: M.G.L. c. 62, §§ 2(a)(2)(E) and 3B(a)(4)  
Estimate: N.A.

- 1.007 Exemption of Railroad Retirement Benefits  
Railroad retirement benefits are not taxed. (Massachusetts has not adopted Internal Revenue Code section 86, which taxes some of these benefits if a taxpayer's income is above a certain level.)

Comment: No adjustment is made for any prior payments taxpayers may have made to fund this system since employee payments to this system are taxes rather than contributions.

Origin: M.G.L. c. 62, § 2(a)(2)(H)  
Estimate: \$4.5

- 1.008 Exemption of Public Assistance Benefits  
Public assistance or welfare benefits are not taxed. These include Aid to Families with Dependent Children (AFDC), Supplemental Security Income (SSI) benefits, and the like.

Origin: Rev. Rul. 71-425, 1971-2 C.B. 76  
Estimate: \$99.2

- 1.009 Exemption of Social Security Benefits  
Social Security benefits paid to persons age 65 or older and their dependents, to persons under 65 who are survivors of deceased workers, and to disabled workers and their dependents are not taxed. Massachusetts has not adopted Internal Revenue Code section 86, which taxes a portion of these payments where a taxpayer's income is above a certain level.

Comment: The comment under item 1.007 applies to this item as well.

Origin: M.G.L. c. 62, § 2 (a)(2)(H)  
Estimate: \$506.3

- 1.010 Exemption of Workers' Compensation Benefits  
Workers' compensation benefits are not taxed. These are benefits paid to disabled employees or their survivors for employment-related injuries or diseases.

Origin: IRC § 104 (a)(1)  
Estimate: \$4.1

- 1.011 Exemption for Dependent Care Expenses<sup>1</sup>  
Day care paid for or provided by an employer to an employee that does not

## Fiscal Year 2002 Tax Expenditure Budget – Personal Income Tax

---

exceed the employee's or employee's spouse's "earned" income, and does not exceed the amount of \$5,000, is not included in the income of the employee and is deductible by the employer.

Origin: IRC § 129  
Estimate: \$4.6

1.012 Exemption of Certain Foster Care Payments

Qualified foster care payments are not includible in the income of a foster parent.

Comment: The exclusion from income for foster care payments has been expanded in Massachusetts to include payments for foster care individuals age 19 or over.

Origin: IRC § 131  
Estimate: \$3.9

1.013 Exemption of Payments Made to Coal Miners

Coal miners or their survivors may exclude from income payments for disability or death from black lung disease.

Origin: IRC § 104(a)(1)  
Estimate: negligible

1.014 Exemption of Rental Value of Parsonages<sup>1</sup>

A minister may exclude from gross income a rental allowance or the rental value of a parsonage furnished to him or her.

Origin: IRC § 107  
Estimate: \$2.7

1.015 Exemption of Scholarships and Fellowships

Degree candidates can exclude scholarships and fellowship income if the amounts are not compensation for services or for the payment of room, board or travel expenses.

Origin: IRC § 117  
Estimate: \$13.7

1.016 Exemption of Certain Prizes and Awards

Prizes and awards are generally required to be included in income. The exemption of certain prizes and awards is generally limited to taxpayers who donate the proceeds to a charitable organization. Certain employee achievement awards are also excluded from gross income.

Origin: IRC § 74  
Estimate: N.A.

1.017 Exemption of Cost-Sharing Payments

Portions of government cost-sharing payments to assist in water and soil

## Fiscal Year 2002 Tax Expenditure Budget – Personal Income Tax

---

conservation projects are not includible in the recipient's income.

Origin: IRC § 126  
Estimate: negligible

- 1.018 Exemption of Meals and Lodging Provided at Work<sup>1</sup>  
The value of meals and lodging furnished to the employee by the employer on the business premises for the employer's convenience is not included in the income of the employee. The employer's expenses are deductible.

Origin: IRC § 119  
Estimate: \$5.5

- 1.019 Treatment of Business-Related Entertainment Expenses<sup>1</sup>  
With certain limitations, a business may take a deduction of up to 80% of the cost of business-related entertainment expenses. Generally, the value of the entertainment is not taxed as income to the persons who benefit from the expenditures. The effect is to provide the hosts and their guests with a nontaxable fringe benefit.

Origin: IRC § 162  
Estimate: N.A.

- 1.020 Exemption of Income from the Sale, Lease, or Transfer of Certain Patents  
Income from the sale, lease or other transfer of approved patents for energy conservation, and income from property subject to such patents, are excluded from gross income for a period of five years.

Origin: M.G.L. c. 62, § 2(a)(2)(G)  
Estimate: N.A.

- 1.021 Exemption of Capital Gains on Home Sales  
This expenditure and 1.105 (Deferral of Capital Gains on Home Sales) were changed by the Taxpayer Relief Act of 1997. 1.105 (based on IRC 1034, the roll-over of capital gains on the sale of a home), was repealed. In effect, both 1.105 and 1.021 were replaced with a modified IRC 121. The new IRC 121, which is the basis for Massachusetts tax expenditure 1.021, removed the age requirement and the "one-time-only" limitation. Now taxpayers may exclude up to \$250,000 of capital gain (or \$500,000 if filing jointly) on the sale of a principle residence. This exclusion from gross income may be taken any number of times, provided the home was the filer's primary residence for an aggregate of at least two of the previous five years.

Origin: IRC § 121  
Estimate: \$47.0

- 1.022 Nontaxation of Capital Gains at Death  
Ordinarily, capital gains are taxed at the time appreciated property is



## Fiscal Year 2002 Tax Expenditure Budget – Personal Income Tax

---

transferred. However, no tax is imposed on a capital gain when appreciated property is transferred at death. The appreciation that accrued during the lifetime of the transferor is never taxed as income.

Comment: The estimate also covers item 1.106 below.

Origin: IRC §§ 1001 and 1014

Estimate: \$80.7

- 1.023 Exemption of Interest from Massachusetts Obligations  
Interest earned on Massachusetts bonds is exempt. The exclusion applies to bonds of Massachusetts agencies and local subdivisions as well.

Origin: M.G.L. c. 62, § 2 (a)(1)(A)

Estimate: \$93.2

- 1.024 Exemption of Benefits and Allowances to Armed Forces Personnel<sup>1</sup>  
Armed forces personnel can exclude from income mustering out payments and compensation for service in a combat zone. They and specified other U.S. government employees may exclude certain allowances and in-kind benefits.

Origin: IRC §§ 112-113

Estimate: \$4.1

- 1.025 Exemption of Veterans' Pensions, Disability Compensation and G.I. Benefits  
These veterans' benefits are not taxed.

Origin: 38 U.S.C. § 5301

Estimate: \$15.4

- 1.026 Exemption of Military Disability Pensions  
Disability pensions paid to service personnel are fully excluded from gross income. The portion of a regular pension that is paid on the basis of disability may also be excluded.

Origin: IRC § 104(a)(4)

Estimate: \$0.4

- 1.027 Exemption of Compensation to Massachusetts-Based Nonresident Military Personnel  
Compensation paid by the U.S. to nonresident uniformed military personnel on duty at bases within Massachusetts for services rendered while on active duty is defined as compensation from sources outside Massachusetts. It is therefore not taxed.

Comment: This tax treatment follows U.S. statutory law.

Origin: 50 U.S.C. App. § 574; M.G.L. c. 62, § 5A(c)

Estimate: \$4.7

## **Fiscal Year 2002 Tax Expenditure Budget – Personal Income Tax**

---

- 1.028 Exemption for Taxpayers Killed in Military Action or by Terrorist Activity  
Massachusetts residents who die in combat while in active military service, or who die as a result of terrorist or military action outside of the U.S. while serving as military or civilian employees of the U.S. are exempt from income taxation.

Origin: M.G.L. c. 62, § 25  
Estimate: N.A.

- 1.029 Exemption for Retirement Pay of the Uniformed Services  
Effective January 1, 1997, income received from the United States government as retirement pay and survivorship benefits for a retired member of the Uniformed Services of the United States is exempt from the personal income tax. The Uniformed Services of the United States are: the Army, Navy, Air Force, Marine Corps, Coast Guard, and the Commissioned Corps of the Public Health Service and National Oceanic and Atmospheric Administration.

Origin: M.G.L. c. 62, § 2  
Estimate: \$20.0

### **1.100 DEFERRALS OF GROSS INCOME**

- 1.101 Net Exemption of Employer Contributions and Earnings of Private Pension Plans<sup>2</sup>  
Employer contributions to private, qualified employee pension plans are deductible by the employer up to certain amounts and are not included in the income of the employees. Income earned by the invested funds is not currently taxable to the employees. Benefits in excess of any employee contributions previously taxed by Massachusetts are taxable when paid out. The value of the tax deferral on contributions and on the investment income is a tax expenditure.

Origin: IRC §§ 401-415 in effect January 1, 1985 and M.G.L. c. 62 §§ 2(a)(2)(F) and 5(b)  
Estimate: \$575.2

- 1.102 Treatment of Incentive Stock Options  
Massachusetts has adopted the federal rules for employee stock options. Generally, employers may offer employees options to purchase at a later date company stock at a price equal to the fair market value of the stock when the option was granted. At the time employees exercise the option, they do not include in income the difference between the fair market value and the price they pay. If they later sell the stock, they are taxed on the amount by which the price they receive for the stock exceeds the price they paid. Thus, income is deferred and is taxed as a capital gain instead of as compensation.

## **Fiscal Year 2002 Tax Expenditure Budget – Personal Income Tax**

---

However, the employer gets no business deduction from granting the option, and the effective tax rates on capital gains and "earned" income differ only slightly in Massachusetts. Therefore, the revenue effect cannot be determined.

Origin: IRC §§ 421-425  
Estimate: N.A.

- 1.103 Exemption of Earnings on Stock Bonus Plans or Profit Sharing Trusts  
Investment income earned by stock bonus plans or profit sharing trusts is not taxed currently to employees.

Origin: M.G.L. c. 62, § 5(b)  
Estimate: N.A.

- 1.104 Exemption of Earnings on IRA and Keogh Plans<sup>2</sup>  
Massachusetts taxes contributions made by individuals to private pension plans. However, income earned on the contributed funds is not taxed currently. Upon retirement, payments in excess of contributions are taxed. The deferral of tax on the investment income is a tax expenditure.

Origin: M.G.L. c. 62, §§ 2(a)(2)(F) and 5(b)  
Estimate: \$145.4

- 1.105 Deferral of Capital Gains on Home Sales  
This expenditure and 1.021 (exclusion of Capital Gains on Home Sales) were changed by the Taxpayer Relief Act of 1997.  
1.105 (based on IRC 1034, the roll-over of capital gains on the sale of a home), was repealed. In effect, both 1.105 and 1.1021 were replaced with a modified IRC 121. The new IRC 121, which is the basis for Massachusetts tax expenditure 1.021, removed the age requirement and the "one-time-only" limitation. Now taxpayers may exclude up to \$250,000 of capital gain (or \$500,000 if filing jointly) on the sale of a principle residence. This exclusion from gross income may be taken any number of times, provided the home was the filer's primary residence for an aggregate of at least two of the previous five years.

Origin: IRC § 1034  
Estimate: N.A.

- 1.106 Nontaxation of Capital Gains at the Time of Gift  
Ordinarily, capital gains are taxed at the time appreciated property is transferred. However, no tax is imposed on a capital gain when appreciated property is transferred by gift. The taxation of appreciation is deferred until the recipient transfers the property.

Origin: IRC §§ 1001, 1015  
Estimate: N.A.

## **Fiscal Year 2002 Tax Expenditure Budget – Personal Income Tax**

---

### **1.200 DEDUCTIONS FROM GROSS INCOME**

#### **1.201 Capital Gains Deduction**

Long-term capital gains realized from the sale of collectibles (as defined by sec. 408 (m) of the I.R.C.) are eligible for a 50% deduction from the 12% capital gains tax.

Origin: M.G.L. c. 62, § 2(c)(3)

Estimate: N.A.

#### **1.202 Deduction of Capital Losses Against Interest and Dividend Income**

Previously, taxpayers could deduct up to \$1,000 of net capital loss against interest and dividend income. In 1999, this limit was removed, and filers were allowed to deduct Capital Losses against Interest and Dividend Income, retroactive to 1996.

Origin: M.G.L. c. 62, § 2(c)(2)

Estimate: \$10.0

#### **1.203 Excess Natural Resource Depletion Allowance**

Individuals or investors in extractive industries (mining or drilling natural resources) may deduct a percentage of gross mining income as a depletion allowance. The allowance may exceed the actual cost of the resource property. For a more detailed description of this tax expenditure, see corporate excise item 2.204.

Origin: IRC §§ 613 and 613A in effect January 1, 1985

Estimate: \$2.0

#### **1.204 Abandoned Building Renovation Deduction**

Businesses renovating eligible buildings in Economic Opportunity Areas may deduct 10% of the cost of renovation from gross income. This deduction may be in addition to any other deduction for which the cost of renovation may qualify. To be eligible for this deduction, renovation costs must relate to buildings designated as abandoned by the Economic Assistance Coordinating Council.

Origin: M.G.L. c. 62, § 3(B)(a)(10)

Estimate: \$2.8

### **1.300 ACCELERATED DEDUCTIONS FROM GROSS INCOME**

#### **1.301 Accelerated Depreciation on Rental Housing**

Landlords and investors in rental housing may use accelerated methods of depreciation for new and used rental housing. Rental housing placed in service after 1988 is depreciated on a straight-line basis over a 27.5-year period. Rental housing placed in service before 1988 was depreciable over

## Fiscal Year 2002 Tax Expenditure Budget – Personal Income Tax

---

shorter periods (generally 19 or 20 years), and, instead of straight-line depreciation, the 175% declining balance method was permitted. Straight-line depreciation over the property's expected useful life is the generally accepted method for recovering the cost of building structures. The excess of allowable depreciation over such generally accepted depreciation is a tax expenditure, resulting in a deferral of tax or an interest-free loan.

Origin: IRC § 168(b)

Estimate: \$10.3

- 1.302 Accelerated Depreciation for Rehabilitation of Low-Income Housing  
Landlords and other investors in low-income housing may amortize rehabilitation expenditures initiated before 1987 over a five-year period. For a more detailed description of this tax expenditure, see corporate excise item 2.302.

Origin: IRC § 167(k)

Estimate: N.A.

- 1.303 Accelerated Depreciation on Buildings (Other Than Rental Housing)  
Individuals or investors in a trade or business may use accelerated methods of depreciation for buildings. Construction may be depreciated under methods which produce faster depreciation than economic depreciation. The precise rates have been changed repeatedly in recent years as the result of revisions in the federal tax code. Structures (other than rental housing) placed in service after 1987 are depreciated on a straight-line basis over a 31.5-year life. The excess of accelerated depreciation over economic depreciation is a tax expenditure.

Origin: IRC §§ 167(j) and 168(b)

Estimate: \$4.2

- 1.304 Accelerated Cost Recovery System (ACRS) for Equipment  
For depreciable tangible personal property placed in service after 1980, capital costs must be recovered using the Accelerated Cost Recovery System (ACRS) which applies accelerated methods of depreciation over set recovery periods. For property placed in service after 1987, Massachusetts has adopted the Modified Accelerated Cost Recovery System (MACRS), which generally uses double declining balance depreciation over specified periods that are substantially shorter than actual useful lives (200% declining balance for 3-, 5-, 7- and 10-year recovery property and 150% declining balance for 15- and 20-year property). The excess of accelerated depreciation over what is considered to be normal depreciation for tangible personal property (double declining balance) is a tax expenditure.

Origin: IRC § 168

Estimate: \$30.7

## Fiscal Year 2002 Tax Expenditure Budget – Personal Income Tax

---

- 1.305 Deduction for Excess First-Year Depreciation  
Individuals or investors in a trade or business may elect to expense certain business assets purchased during the taxable year up to a maximum amount of \$10,000. Any remaining cost must be depreciated according to MACRS, as described in the preceding item. The immediate deduction results in a deferral of tax or an interest-free loan.
- Origin: IRC § 179  
Estimate: \$3.0
- 1.306 Five-Year Amortization of Business Start-Up Costs  
Individuals or investors in a trade or business may elect to treat business start-up expenditures as deferred expenses and amortize them over five years. For a more detailed description of this tax expenditure, see corporate excise item 2.304.
- Origin: IRC § 195  
Estimate: \$1.2
- 1.307 Five-Year Amortization of Certain Operating Rights  
Individuals or investors in a trade or business may amortize over five years the cost of bus route, freight forwarding and certain other operating rights that have lost their economic value due to federal deregulation. For a more detailed description of this tax expenditure, see corporate excise item 2.310.
- Origin: Tax Reform Act of 1986, § 243  
Estimate: N.A.
- 1.308 Expensing Exploration and Development Costs  
Individuals or investors in extractive industries (mining or drilling natural resources) may take an immediate deduction for certain exploration and development costs. For a more detailed description of this tax expenditure, see corporate excise item 2.309; the provisions for individual taxpayers are somewhat more liberal than those that apply to corporations.
- Origin: IRC §§ 263(c), 616 and 617 in effect January 1, 1985  
Estimate: negligible
- 1.309 Expensing Research and Development Expenditures in One Year  
Individuals or investors in a trade or business may take an immediate deduction for research and development expenditures. For a more detailed description of this tax expenditure, see corporate excise item 2.308.
- Origin: IRC § 174  
Estimate: N.A.
- 1.310 Five-Year Amortization of Pollution Control Facilities  
Individuals or investors in a trade or business may elect to amortize the cost of

## **Fiscal Year 2002 Tax Expenditure Budget – Personal Income Tax**

---

a certified pollution control facility over a five-year period. For a more detailed description of this tax expenditure, see corporate excise item 2.311.

Origin: IRC § 169

Estimate: N.A.

### **1.311 Seven-Year Amortization for Reforestation**

Individuals or investors in the forestry business may amortize the costs of reforestation over a seven-year period. For a more detailed description of this tax expenditure, see corporate excise item 2.313.

Origin: IRC § 194

Estimate: N.A.

### **1.312 Expensing Certain Capital Outlays of Farmers**

Farmers may use certain favorable accounting rules. For instance, they may use the cash basis method of accounting and may deduct up to 50% of non-paid farming expenses as current expenses even though these expenditures are for inventories on hand at the end of the year. They also may deduct certain capital outlays, such as expenses for fertilizers and soil and water conservation if they are consistent with a federal- or state-approved plan. Generally, these special rules are not available to farming corporations and syndicates.

Origin: IRC §§ 175, 180 and 182 and Reg. §§ 1.61-4, 1.162-12 and 1.471-6

Estimate: \$0.6

## **1.400 DEDUCTIONS FROM ADJUSTED GROSS INCOME**

### **1.401 Deduction for Employee Social Security and Railroad Retirement Payments**

Taxes paid by employees to fund the Social Security and Railroad Retirement systems are deductible against "earned" income up to a maximum of \$2,000 per individual.

Comment: The estimate also covers item 1.402 below.

Origin: M.G.L. c. 62, § 3B(a)(3)

Estimate: \$314.0

### **1.402 Deduction for Employee Contributions to Public Pension Plans<sup>2</sup>**

Employee contributions to federal and state contributory pension plans are deductible against "earned" income up to a maximum of \$2,000 per individual.

Origin: M.G.L. c. 62, § 3B(a)(4)

Estimate: N.A.

### **1.403 Additional Exemption for the Elderly**

A taxpayer age 65 or over is entitled to an additional exemption against

## Fiscal Year 2002 Tax Expenditure Budget – Personal Income Tax

---

"earned" income of \$700 (\$1,400 for a married couple filing jointly if both spouses are age 65 or over).

Origin: M.G.L. c. 62, §§ 3B(b)(1)(C) and (2)(C)  
Estimate: \$20.1

1.404 Additional Exemption for the Blind

A blind taxpayer is allowed an additional exemption against "earned" income of \$2,200 (\$4,400 for a married couple filing jointly if both spouses are blind).

Origin: M.G.L. c. 62, §§ 3B(b)(1)(B) and (2)(B)  
Estimate: \$1.0

1.405 Dependents Exemption Where the Child Earns Income<sup>3</sup>

Taxpayers are allowed an additional exemption of \$1,000 for a dependent child even when the child earns income against which a \$2,200 personal exemption can be taken.

Comment: The estimate cannot be separated from the figure for the dependents exemption in endnote 3.

Origin: IRC § 151(c) in effect January 1, 1988 and M.G.L. c. 62 § 3B(b)(3)  
Estimate: N.A.

1.406 Deduction for Dependents under 12

Individual taxpayers and married taxpayers filing jointly with one or more dependents under age 12, who do not claim the deduction for child care described in item 1.409 below, may claim this deduction. For tax year 2001, individual taxpayers and married taxpayers filing jointly with one dependent under 12 may deduct \$2,400, while filers with two or more dependents under age 12 may deduct \$4,800. Starting in tax year 2002, filers with one dependent under 12 may deduct \$3,600; filers with two or more dependents under 12 may deduct \$7,200 for tax year 2002.

Origin: M.G.L. c. 62, § 3B(a)(8)  
Estimate: \$106.8

1.407 Personal Exemption for Students Age 19 or Over

A taxpayer may claim a dependent exemption of \$1,000 for a child who is a full-time student even if he or she is 19 or over.

Origin: IRC § 151(c) in effect January 1, 1988 and M.G.L. c. 62 § 3B(b)(3)  
Estimate: \$6.3

1.408 Deduction for Adoption Fees

Adoption fees paid to a registered adoption agency are deductible against "earned" income.



## Fiscal Year 2002 Tax Expenditure Budget – Personal Income Tax

---

Origin: M.G.L. c. 62, § 3B(b)(5)

Estimate: \$0.7

- 1.409 Deduction for Business-Related Child Care Expenses  
Taxpayers qualifying for the credit for employment-related child care expenses in the Internal Revenue Code are allowed a deduction against "earned" income for the amount of the expenses which qualify for the credit. Beginning in tax year 2001, the cap on this deduction will be increased, and the coverage expanded. It will be extended to include elderly and disabled dependents. The cap will be increased from \$2,400 to \$3,600 for filers with one dependent, and from \$2,400 to \$4,800 for filers with two or more dependents. Beginning in tax year 2002, the cap further increases to \$4,800 for qualifying filers with one dependent and to \$9,600 for filers with two or more dependents.

Comment: For federal tax purposes, the requirement that employment-related child care expenses relate only to children under age 15 was further restricted to children under age 13. In addition, a federal change now requires a taxpayer to include employer-provided dependent care expenses when calculating the limitation amount of qualifying expenses.

Origin: IRC § 21, in effect January 1, 1988 and M.G.L. c. 62, § 3B(a)(7)

Estimate: \$19.8

- 1.410 Exemption of Medical Expenses  
Medical and dental expenses in excess of 7.5% of federal adjusted gross income are deductible against "earned" income for taxpayers who itemize on their federal returns.

Origin: IRC § 213 and M.G.L. c. 62, § 3B(b)(4)

Estimate: \$28.0

- 1.411 Rent Deduction  
For tax year 2000, renters may deduct against "earned" income one-half of the rent paid for a principal residence located in Massachusetts, up to a maximum of \$2,500 per year. Beginning in tax year 2001, this maximum will be raised to \$3,000 per year.

Origin: M.G.L. c. 62, § 3B(a)(9)

Estimate: \$104.6

- 1.412 Nontaxation of Charitable Purpose Income of Trustees, Executors or Administrators  
The adjusted gross income of trustees, executors or administrators which is currently payable to or irrevocably set aside for public charitable purposes is tax-exempt.

Origin: M.G.L. c. 62, §§ 3A(a)(2) and B(a)(2)

Estimate: N.A.

## **Fiscal Year 2002 Tax Expenditure Budget – Personal Income Tax**

---

- 1.413 Exemption of Interest on Savings in Massachusetts Banks  
Up to \$100 (\$200 on a joint return) of interest from savings deposits or savings accounts in Massachusetts banks is excluded from "earned" income.

Origin: M.G.L. c. 62, § 3B(a)(6)  
Estimate: \$10.5

- 1.414 Tuition and Tuition Interest Tax Deduction  
A deduction is allowed for tuition payments to a two or four year college in which a taxpayer or taxpayer's dependent is enrolled. The deduction is equal to the amount by which the tuition payment, less any scholarships, grants or financial aid received, exceeds 25% of the taxpayer's Massachusetts adjusted gross income, exclusive of this deduction. Interest on student debt is also deductible.

Origin: M.G.L. c. 62, § 3B(a)(11),(12)  
Estimate: \$30.0

- 1.415 Charitable Contributions Tax Deduction  
A deduction is allowed for charitable contributions in determining the Part B taxable income. The deduction amount is equal to the taxpayer's charitable contributions for the year, as defined under the Code (the Federal Internal Revenue Code) and without regard to whether the taxpayer elected to itemize deductions on his or her federal income tax return.

The proposal would not have any impact on the deductibility of donations by Corporations.

Origin: M.G.L. c. 62  
Estimate: \$175.0

### **1.500 PREFERENTIAL RATE OF TAXATION**

- 1.501 Preferential Treatment of Interest on Savings in Massachusetts Banks  
Interest paid on savings deposits in Massachusetts banks is taxed as "earned" income while other interest income is taxed at the higher "unearned" income tax rate. The difference is a tax expenditure. As of 1/1/99, all income, whether earned or unearned, will be taxed at the same rate.

Origin: M.G.L. c. 62, § 2(b)(1)(A)  
Estimate: \$0.0

### **1.600 CREDITS AGAINST TAX**

- 1.601 Renewable Energy Source Credit

## Fiscal Year 2002 Tax Expenditure Budget – Personal Income Tax

---

Owners and tenants of residential property located within Massachusetts who are not dependents and who occupy the property as a principal residence are allowed a credit up to \$1,000, or an amount equal to 35% of the cost of a renewable energy source.

Comment: The tax credit for taxable years commencing after December 31, 1988 and before January 1, 1991 was limited to 25% of the cost of a renewable energy source up to a maximum of \$1,000. After 1990 the credit was further limited to 15% with the same \$1,000 cap.

Origin: M.G.L. c. 62, § 6(d)  
Estimate: \$0.6

- 1.602     **Credit for Removal of Lead Paint**  
A tax credit is provided in the amount of the cost of removing or covering lead paint on each residential unit up to \$1,500. A seven-year carryover of any unused credit is provided.
- Origin: M.G.L. c. 62, § 6(e)  
Estimate: \$1.9
- 1.603     **Economic Opportunity Area Credit**  
Businesses investing in qualified property in an Economic Opportunity Area are entitled to a credit against tax of 5% of the cost of the property. To qualify for this credit, the property must be used exclusively in a certified project in an Economic Opportunity Area. To be certified, a project must be approved by the Economic Assistance Coordinating Council.
- Origin: M.G.L. c. 62, § 6(g)  
Estimate: \$0.9
- 1.604     **Credit for Employing Former Full-Employment Program Participants**  
Employers who continue to employ former participants of the §110(1) full employment program in non-subsidized positions are eligible to receive a tax credit equal to \$100 per month for each month of non-subsidized employment, up to a maximum of \$1,200 per employee, per year.
- Origin: St. 1995, c. 5, § 110(m)  
Estimate: N.A.
- 1.605     **Earned Income Credit**  
Effective January 1, 1997, taxpayers were allowed a refundable credit against Massachusetts tax equal to 10% of the amount of the earned income credit claimed on their federal individual income tax return. Effective January 1, 2001, the allowed percentage will be increased to 15%.
- Origin: M.G.L. c. 62, § 6(h)  
Estimate: \$61.7

## Fiscal Year 2002 Tax Expenditure Budget – Personal Income Tax

---

- 1.606    **Septic System Repair Credit**  
Taxpayers required to repair or replace a failed cesspool or septic system pursuant to the provisions of Title V, as promulgated by the Department of Environmental Protection in 1995, are allowed a credit equal to 40% of the design and construction costs incurred (less any subsidy or grant from the Commonwealth), up to a maximum of \$1,500 per tax year and \$6,000 in total. Unused credits can be carried forward for up to three years.  
Origin: M.G.L. c. 62, § 6(i)  
Estimate: \$18.0
- 1.607    **Low Income Housing Tax Credit**  
Provides a 5 years of tax credits to developers who set aside a specified percentage of housing units for low-moderate income renters.  
  
Origin: M.G.L. c. 62, § 6(i) a  
Estimate: \$4.0
- 1.608    **Refundable State Tax Credit Against Property Taxes for Seniors (“Circuit Breaker”)**  
Seniors are eligible for a tax credit to the extent that their property taxes or 25% of rent exceeds 10% of their income. Maximum credit is \$375 for tax year 2001, and \$750 for tax year 2002 and thereafter. Starting with tax year 2001, all thresholds and credit amounts are adjusted for inflation over the 1999 base.  
  
Origin: M.G.L. c. 62, § 6 (b)  
Estimate: \$30.0
- 

<b>KEY</b>	<b>ORIGIN</b>	
	<b>IRC</b>	Federal Internal Revenue Code (26 U.S.C.)
	<b>U.S.C</b>	United States Code
	<b>M.G.L.</b>	Massachusetts General Laws
	<b>Rev. Rul.; C.B.</b>	Revenue Ruling; Cumulative Bulletin of the U.S. Treasury
	<b>ESTIMATES</b>	
		All estimates are in \$ millions.

---

**ENDNOTES:**

<sup>1</sup>This item and others citing this endnote cover employee fringe benefits. We accept as standard the following treatment of these benefits: the expense incurred by the employer in providing the benefit is properly deductible as a business expense and the benefit is taxed as compensation to the employee as if the employee had received taxable compensation and then used it to purchase the benefit. Of course, there are problems with this analysis. In some cases, the "benefit" is more a condition of employment than a true benefit. For example, a teacher required to have lunch in the school cafeteria may prefer to eat elsewhere even if the school lunch is free. On the other hand, in many cases the provision of tax-free employee benefits is clearly a substitution for taxable compensation.

## **Fiscal Year 2002 Tax Expenditure Budget – Personal Income Tax**

---

<sup>2</sup>This item and others citing this endnote cover contributory pension plans. The standard tax treatment of these plans is as follows:

<u>Component</u>	<u>Standard Treatment</u>
Contributions:	Made out of income which is currently taxed to the employee.
Investment Income:	Taxed to the employee as "earned" income.
Distributions from Pension Funds:	Tax-free to the extent they are made out of dollars previously taxed to the employee as contributions or investment income.

The non-standard treatment of contributions, investment income, or distributions as described in items 1.006, 1.101, 1.104, and 1.402, results in either nontaxation or deferrals of tax.

---

<sup>3</sup>Estimates for the basic personal exemptions and the no tax status discussed in the introduction to the personal income tax are (in millions of dollars):

- Personal exemption for single taxpayers: \$282
- Personal exemption for married couples: \$559
- Personal exemption for married taxpayers filing separately: \$14
- Dependents exemption: \$89
- Personal exemption for heads of households: \$76
- No tax status/Limited income credits: \$50

## **Fiscal Year 2002 Tax Expenditure Budget – Corporate Excise Tax**

---

In 1780, the Massachusetts Constitution gave to the General Court the power to levy "reasonable duties and excises upon any produce, wares, merchandise and commodities brought into, produced, manufactured, or being within the Commonwealth."

The corporate excise was enacted in 1919, replacing a corporate franchise tax, which was levied on the value of capital stock. Initially, the corporate excise was imposed on corporate excess (similar to net worth) and on net income.

In 1962, the corporate excess measure was repealed. The tax is now levied on tangible property or net worth (depending on the mix of property held by the corporation) and on net income.

Revenues from the corporate excise represented 7.2% of total tax revenues for Fiscal Year 2000. The tax ranked third in Fiscal Year 2000, after the individual income tax and sales and use tax, in amounts collected.

### **Corporate Excise: Basic Structure**

**Tax Base:** Generally, corporations doing business in Massachusetts are subject to a tax based on net income and on either tangible property or net worth. Together, these two measures of tax constitute the corporate excise.

The net income measure of the tax is based on gross income for federal tax purposes with certain additions such as interest earned on state obligations, and less certain deductions, most of which are allowable under the provisions of the Internal Revenue Code. Many of these deductions are considered to be part of the basic structure. For example, in providing for depreciation deductions, the basic structure would allow the cost of property to be written off over its useful life. However, rules, which allow accelerated depreciation deductions, are listed as tax expenditures.

Corporations whose qualifying tangible assets in Massachusetts equal or exceed 10% of their qualifying total assets in Massachusetts apportioned according to the income apportionment percentage are taxed on the value of their tangible property. Other corporations are taxed on a net worth basis.

Banks, security corporations, utility corporations, and insurance companies are taxed in a different manner, and are generally not included in this budget. Tax expenditures for these separately taxed corporations are included, however, where they enjoy the benefit of federal and state tax expenditures catalogued in this section, because the taxes to which they are subject are based at least in part on net income.

**Taxable Unit:** A corporation is a taxpayer separate and distinct from its shareholders.

## **Fiscal Year 2002 Tax Expenditure Budget – Corporate Excise Tax**

---

**Rate Structure:** The effective excise rate on corporations is 9.5% of net income apportioned to Massachusetts, and \$2.60 per \$1,000 of the value of Massachusetts tangible property or net worth allocable to Massachusetts. The minimum tax is \$456.

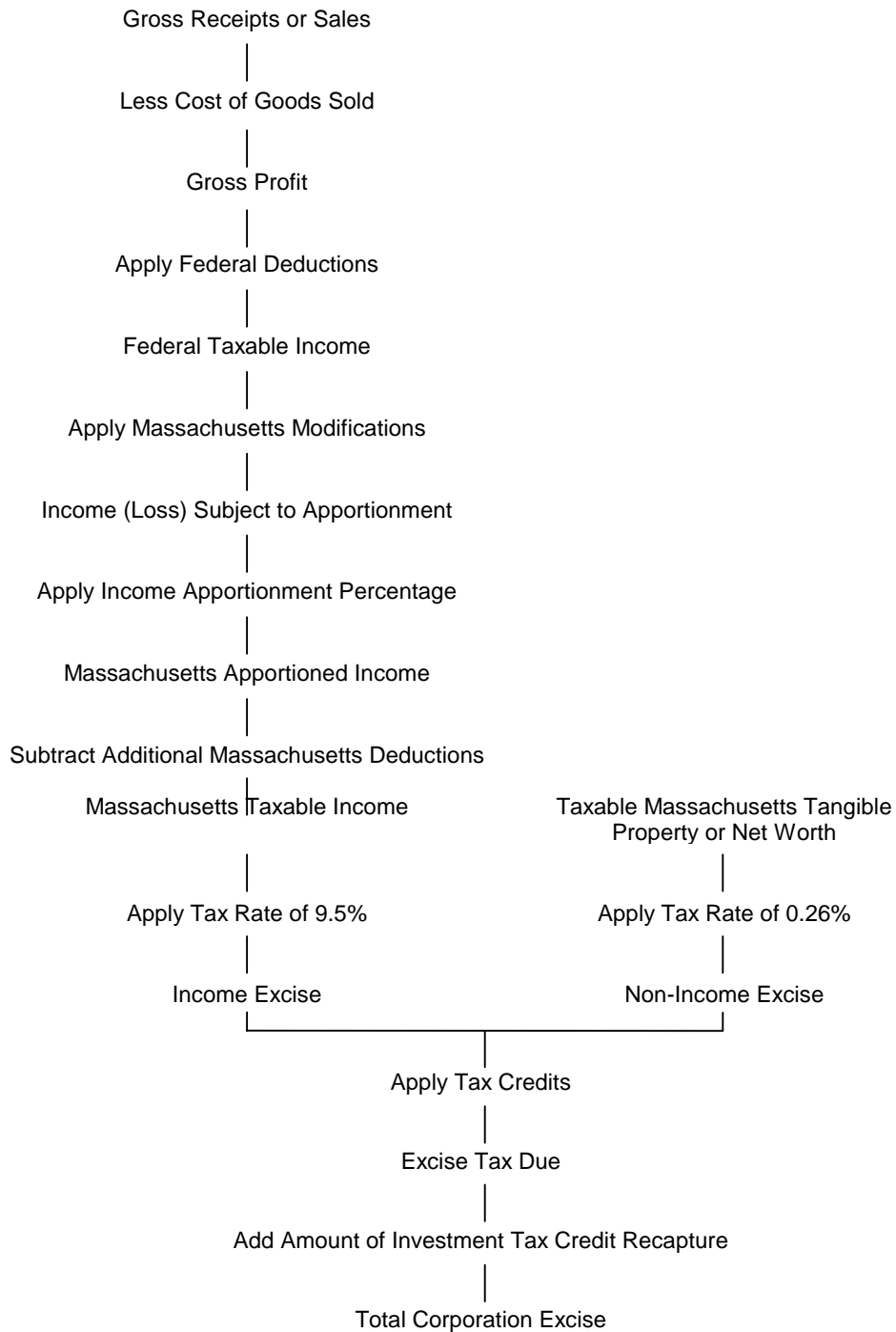
**Taxable Period:** The taxable period for corporations is either the calendar year or the corporation's fiscal year. Estimated payments are made every three months during the taxable year. Federal accounting periods and methods have been adopted. Net operating loss carry-forwards are allowed. Qualifying losses may be carried forward for no more than five years.

**Interstate and International Aspects:** All domestic corporations are subject to the corporate excise by reason of corporate existence at any time during the taxable year. Foreign corporations doing business within the state or owning property in the state are also subject to the excise. Corporations doing business both within and without Massachusetts are entitled to apportion net income if they have income from business activity which is taxable in another jurisdiction using a formula based on the proportions of corporate real and tangible personal property, payroll, and sales that are located in Massachusetts. Under certain circumstances, taxpayers may petition for, or the Commissioner may impose, alternate methods of accounting to reflect more fairly a taxpayer's income from business operations in Massachusetts.

# Fiscal Year 2002 Tax Expenditure Budget – Corporate Excise Tax

---

## Computation of Massachusetts Business Corporation Excise





## Fiscal Year 2002 Tax Expenditure Budget – Corporate Excise Tax

---

### Types of Tax Expenditures under the Corporate Excise

As with the personal income tax, the basic structure of the corporate excise is subject to several different types of modifications that can produce tax expenditures.

**Exclusions from Gross Income:** Gross income is the starting point in calculation of the income component of the corporate excise. In the absence of tax expenditures, it would include all income received from all sources. Items of income that are excluded from gross income escape taxation permanently.

**Deferrals of Gross Income:** Where an item of income is not included in gross income in the year when it is actually received, but is instead included in a later year, the result is a tax expenditure in the form of an interest-free loan from the state to the taxpayer in the amount of the tax payment that is postponed.

**Deductions from Gross Income:** Certain amounts are subtracted from gross income to arrive at taxable income. Many of these deducted amounts reflect the costs of producing income (business expenses) and are not included in the corporate excise's measure of income; such deductions are not tax expenditures. Other deductions, which do not reflect business expenses, constitute tax expenditures, which permit corresponding amounts of income to escape taxation permanently.

**Accelerated Deductions from Gross Income:** In a number of cases, corporations are allowed to deduct business expenses from gross income at a time earlier than such expenses would ordinarily be recognized under accepted accounting principles. The total amount of the permissible deduction is not increased but it can be utilized more quickly to reduce taxable income. The result is to defer taxes, thus in effect occasioning an interest-free loan from the state to the taxpayer.

**Adjustments to Apportionment Formula:** In the case of a business that earns income both inside and outside the Commonwealth, an apportionment formula is used to determine what portion of the total business income to allocate to Massachusetts for calculation of the corporate excise. When the standard formula is adjusted to reduce the apportionment factor for certain businesses, tax expenditure results. The practical effect is to exclude a portion of those businesses' income from taxation.

**Exclusions from Property Component:** In addition to the excise based on income, corporations pay a component of the excise based on the value of their property in the state. To the extent that certain classes of property are not included in the excise's property measure, tax expenditures result.

**Credits Against Tax:** After a corporation's basic tax liability has been computed, it may subtract certain credit amounts in determining the actual amount of taxes due. It is important to note that, whereas one-dollar exclusion or deduction results in tax savings of only a few cents (one dollar times the applicable tax rate), one-dollar credit results in one-dollar tax savings.

## Fiscal Year 2002 Tax Expenditure Budget – Corporate Excise Tax

---

**Entity Exempt from Taxation:** In some cases, a business or other entity may be completely exempt from taxation. To the extent business or investment income goes untaxed, tax expenditures result.

### List of Corporate Excise Tax Expenditures

#### 2.000 EXCLUSIONS FROM GROSS INCOME

##### 2.001 Small Business Corporations

Certain corporations with no more than 35 shareholders may elect to be taxed, for both federal and state tax purposes, as "small business corporations" or "S corporations." The earnings of an S corporation with total receipts of less than \$6 million are not generally subject to taxation at the corporate level. S corporations with total receipts of \$6 million or more are subject to a reduced corporate excise; 3% if receipts are \$6 million or more but less than \$9 million and 4.5% if receipts are \$9 million or more. In addition, S corporation net earnings (and losses) are attributed directly to the shareholders (whether or not they are distributed as dividends) and are taxed at the individual shareholder level, generally at a 5.95% rate. By contrast, ordinary corporate earnings are taxed twice, once when earned by the corporation at a 9.5% rate, and once when distributed to shareholders, generally at a 5.95% rate.

The difference between the manner in which income is taxed to a C corporation and its shareholders and an S corporation and its shareholders constitutes tax expenditure. Massachusetts first adopted this preferential treatment for closely-held corporations in 1986.

Comment: The estimate is adjusted for *DOR's November 30, 1999 Letter Ruling (99-17) on corporate trust and its Qualified Subchapter S Subsidiary*, assuming that S-corporations with gross receipts of \$6 million or more would re-organize as "corporate trusts".

Origin: IRC § 1361-1363 and M.G.L. c. 62, IRC § 17A and c. 63, IRC § 32D, LR 99-17.

Estimate: \$26.2

##### 2.002 Exemption of Income from the Sale, Lease or Transfer of Certain Patents

Income from the sale, lease or other transfer of approved patents for energy conservation, and royalties and income from the sale, lease or other transfer of property subject to such patents are excluded from gross income for a period of five years.

Origin: M.G.L. c. 63, IRC § 30(5)(a)  
Estimate: N.A.

## **Fiscal Year 2002 Tax Expenditure Budget – Corporate Excise Tax**

---

### **2.100 DEFERRALS OF GROSS INCOME**

- 2.101 Deferral of Tax on Certain Shipping Companies  
Certain shipping companies receive up to a 25-year deferral of tax on that portion of their net income, which is set aside for construction, modernization, and major repair of ships.

Origin: 46 U.S.C. § 1177 and IRC § 7518  
Estimate: \$0.1

### **2.200 DEDUCTIONS FROM GROSS INCOME**

- 2.201 Charitable Deduction  
In computing net income, corporations may deduct charitable donations up to 10% of taxable income computed without the deductions. There is a carryover of excess contributions available for five succeeding taxable years.

Origin: IRC § 170  
Estimate: \$17.7

- 2.202 Additional Deduction for Certain Businesses in a Poverty Area (UJIP)  
In determining net income, corporations certified by the Urban Job Incentive Bureau of the Executive Office of Economic Affairs as operating in a poverty area may deduct an additional 25% of a portion of compensation paid to their employees who live in a poverty area. The effect of the provision is to allow businesses to deduct 125% of the wages of these employees.

Origin: M.G.L. c. 63, § 38F  
Estimate: \$0.7

- 2.203 Net Operating Loss Carry-Over  
Taxpayers may carry-over for no more than five years (but not carry back) net operating losses (NOL) as defined under section 172 of the Internal Revenue Code.

Origin: IRC § 172 and M.G.L. c. 63, § 305(b) and (ii)  
Estimate: \$130.9

- 2.204 Excess Natural Resource Depletion Allowance  
Taxpayers in extractive industries (mining or drilling for natural resources) may deduct a percentage of gross mining income as a depletion allowance ("percentage depletion") even if the cost basis of the property has been reduced to zero. The deduction may not exceed 50% (in some cases, 65%) of net income from the property. In the case of oil and gas, percentage depletion is available only to domestic oil and gas sold by "independent producers" (nonintegrated companies). The excess of the deduction available using the percentage of gross income method of depletion over a depletion deduction based on cost is tax expenditure.

## Fiscal Year 2002 Tax Expenditure Budget – Corporate Excise Tax

---

Origin: IRC §§ 613 and 613A  
Estimate: \$0.1

- 2.205 Deduction for Certain Dividends of Cooperatives  
Farmers' cooperatives and certain corporations acting as cooperatives may deduct patronage dividends and other amounts out of gross income. Cooperatives meeting certain requirements may deduct dividends on capital stock and certain payments to patrons such as investment income. Under generally accepted rules for taxing corporations, dividends paid to shareholders cannot be deducted by the corporation.

Origin: IRC §§ 1381-1388  
Estimate: N.A.

- 2.206 Abandoned Building Renovation Deduction  
Businesses renovating eligible buildings in Economic Opportunity Areas may deduct 10% of the cost of renovation from gross income. This deduction may be in addition to any other deduction for which the cost of renovation may qualify. To be eligible for this deduction, renovation costs must relate to buildings designated as abandoned by the Economic Assistance Coordinating Council.

Origin: M.G.L. c. 63, § 38O  
Estimate: \$1.8

### **2.300 ACCELERATED DEDUCTIONS FROM GROSS INCOME**

- 2.301 Accelerated Depreciation on Rental Housing  
Landlords and investors in rental housing may use accelerated methods of depreciation for new and used rental housing. Rental housing placed in service after 1986 is depreciated on a straight-line basis over a 27.5 year period. Rental housing placed in service before 1987 was depreciable over shorter periods (generally 19 or 20 years), and, instead of straight-line depreciation, the 175% declining balance method was permitted. Straight-line depreciation over the property's expected useful life is the generally accepted method for recovering the cost of buildings. The excess of allowable depreciation over such generally accepted depreciation is a tax expenditure, resulting in a deferral of tax or an interest-free loan.

Origin: IRC § 168  
Estimate: \$1.5

- 2.302 Accelerated Depreciation for Rehabilitation of Low-Income Housing  
Expenditures made for the rehabilitation of low-income rental housing may be depreciated over a five-year period, using the straight-line method of depreciation and ignoring salvage value, if the expenditures are made under a binding contract in existence before 1987. Generally, the aggregate expenditures qualifying for the deduction cannot exceed \$20,000 per unit, though they must equal at least \$3,000 per unit over two consecutive years.

## Fiscal Year 2002 Tax Expenditure Budget – Corporate Excise Tax

---

Any remaining cost may be depreciated under the accelerated methods described in item 2.301. The accelerated recovery of costs which otherwise would be depreciable over a longer period amounts to a deferral of tax or an interest-free loan.

Origin: IRC § 167(k)  
Estimate: N.A.

- 2.303 Expensing for Removal of Barriers to the Handicapped  
Taxpayers may elect to deduct up to \$35,000 of the costs of removing architectural or transportation barriers to the handicapped in the year these costs are incurred. The immediate deduction of these expenditures which would otherwise have to be capitalized and depreciated over a longer period results in a deferral of tax or an interest-free loan.

Origin: IRC § 190  
Estimate: \$0.3

- 2.304 Five-Year Amortization of Start-Up Costs  
Taxpayers may elect to treat certain capital costs of starting a business as deferred expenses and amortize them over five years. Without the election, only costs for particular assets could be recovered through depreciation deductions. Other costs would be part of the basis in the business and generally could not be recovered until the business was sold or discontinued. The election to amortize these costs allows for a deferral of tax or an interest-free loan.

Origin: IRC § 195  
Estimate: \$0.3

- 2.305 The Accelerated Cost Recovery System (ACRS) for Equipment  
For depreciable tangible personal property placed in service after 1980, capital costs must be recovered using the federal Accelerated Cost Recovery System (ACRS) which applies accelerated methods of depreciation over set periods. For property placed in service after 1986, the Federal Tax Reform Act of 1986 prescribes revised ACRS depreciation schedules, generally using double-declining balance depreciation over specified periods that are substantially shorter than actual useful lives. The excess of accelerated depreciation over what is considered to be normal depreciation for tangible personal property (double-declining balance over expected useful lifetimes) is a tax expenditure.

Origin: IRC § 168  
Estimate: \$160.4

- 2.306 Deduction for Excess First-Year Depreciation  
Taxpayers may elect to expense certain business assets purchased during the taxable year. The total deduction cannot exceed \$17,500; for taxpayers whose investment in eligible assets exceeds \$200,000 in the year, the

## Fiscal Year 2002 Tax Expenditure Budget – Corporate Excise Tax

---

\$17,500 ceiling is reduced by \$1 for each dollar of investment above \$200,000. Any remaining cost may be depreciated according to ACRS as described in item 2.305. The immediate deduction results in a deferral of tax or an interest-free loan.

Origin: IRC § 179  
Estimate: \$1.4

- 2.307 Accelerated Depreciation on Buildings (other than Rental Housing)  
Construction may be depreciated under methods which produce faster depreciation than economic depreciation. The precise rules have been changed repeatedly in recent years by revisions of the federal tax code. For structures (other than housing) placed in service after 1986, federal law requires straight-line depreciation over a 31.5 year life. The excess of accelerated depreciation over economic depreciation is a tax expenditure. For a more detailed description of accelerated depreciation, see item 2.301 above.

Origin: IRC § 168  
Estimate: \$8.5

- 2.308 Expensing Research and Development Expenditures in One Year  
Taxpayers may elect to treat research or experimental expenditures incurred in connection with a trade or business as immediately deductible expenses. Under generally accepted accounting principles, at least some of these costs would otherwise be treated as capital expenditures and depreciated or amortized over a period of years. Their immediate deduction results in a deferral of tax or an interest-free loan.

Origin: IRC § 174  
Estimate: \$46.3

- 2.309 Expensing Exploration and Development Costs  
Certain capital costs incurred in bringing a known mineral deposit into production are deductible in the year incurred. A portion of domestic mining exploration costs can also be expensed, although they will be recaptured if the mine reaches the production stage. Certain intangible drilling and development costs of domestic oil, gas, and geothermal wells are deductible when made, but to a certain extent may be recaptured upon disposition of oil, gas, or geothermal property to which they are properly chargeable. The immediate expensing of these costs, which would otherwise be capitalized and recovered through depreciation or through depletion as the natural resource is removed from the ground, results in a deferral of tax or an interest-free loan.

Origin: IRC §§ 193, 263(c), 616 and 617  
Estimate: \$0.4

## Fiscal Year 2002 Tax Expenditure Budget – Corporate Excise Tax

---

- 2.310      Five-Year Amortization of Certain Operating Rights  
Certain bus, trucking and shipping companies may amortize over a five-year period the cost of bus route, freight forwarding and certain other operating rights that have lost their economic value due to federal deregulation of these industries. The five-year amortization of these costs, which would otherwise be capitalized and recovered upon the sale of the business, results in a deferral of tax or an interest-free loan.
- Origin: Tax Reform Act of 1986, § 243  
Estimate: N.A.
- 2.311      Five-Year Amortization of Pollution Control Facilities  
Taxpayers may elect to amortize the cost of a certified pollution control facility over a five-year period, allowing for accelerated recovery of these costs. Accelerated recovery is only available for pollution control facilities subsequently added to plants that were in operation before 1976. The excess of accelerated recovery over depreciation deductions otherwise allowable results in a deferral of tax or an interest-free loan.
- Origin: IRC § 169  
Estimate: N.A.
- 2.312      Expensing Certain Expenditures for Alternative Energy Sources  
In determining net income, a corporation may elect to take an immediate deduction for expenditures made for certain solar or wind powered systems or units located in Massachusetts and used exclusively in the business, in lieu of all other deductions and credits including the deduction for depreciation. Without this provision, such expenditures would have to be capitalized and depreciated. The immediate deduction results in a deferral of tax or an interest-free loan.
- Origin: M.G.L. c. 63, § 38H  
Estimate: \$0.7
- 2.313      Seven-Year Amortization for Reforestation  
Taxpayers may elect to amortize reforestation costs for qualified timber property over a seven-year period. In the absence of this special provision, these costs would be capitalized and depreciated over a longer period or recovered when the timber is sold. The accelerated cost recovery results in a deferral of tax or an interest-free loan.
- Origin: IRC § 194  
Estimate: N.A.

## **Fiscal Year 2002 Tax Expenditure Budget – Corporate Excise Tax**

---

### **2.400 ADJUSTMENTS TO APPORTIONMENT FORMULA**

#### **2.401 Unequal Weighting of Sales, Payroll, and Property in the Apportionment Formula**

Corporations with a presence in Massachusetts and other states allocate income to the Commonwealth using a three-factor apportionment formula. A corporation's sales, payroll, and property in Massachusetts are compared to those outside Massachusetts.

Exporters benefit from an apportionment formula that weights sales more heavily than the other factors. Effective January 1, 1996, eligible defense corporations are allowed a formula that weights sales 100%. For other manufacturers, a 100% sales weight is phased-in over five years. All other corporations will continue to use a formula that weights sales 50%.

Effective January 1, 1997 mutual fund corporations are allowed to attribute mutual fund sales to Massachusetts based on the domicile of shareholders in the mutual funds. Effective July 1, 1997, mutual fund corporations are allowed to apportion their income to Massachusetts based solely on the percentage of sales attributed to Massachusetts.

Comment: In listing this item, it is assumed that a standard apportionment formula gives equal weight to sales, property and payroll. The estimate is of the impact of departing from this standard formula.

Origin: M.G.L. c. 63, § 38 (c)  
Estimate: \$268.2

### **2.500 EXCLUSIONS FROM PROPERTY COMPONENT**

#### **2.501 Nontaxation of Certain Energy Property**

Tangible property qualifying for the deduction for expenditures for alternative energy described in item 2.312 above is not subject to taxation under the tangible property measure of the corporate excise.

Origin: M.G.L. c. 63, § 38H(f)  
Estimate: N.A.

#### **2.502 Exemption for Property Subject to Local Taxation**

In computing the state corporate excise on tangible property, property subject to tax at the local level is exempt. Generally, the state taxes only the machinery of manufacturing corporations and exempts business real estate and tangible personal property.

Comment: For purposes of estimating revenue loss from this tax expenditure the state's rate on property, \$2.60 per \$1,000, has been applied. It should be noted that the tax burden on property taxed at the state level under the corporate excise is less than a fifth of the average burden on property taxed



## Fiscal Year 2002 Tax Expenditure Budget – Corporate Excise Tax

---

locally.

Origin: M.G.L. c. 63, § 30(7)

Estimate: \$109.6

### **2.600 CREDITS AGAINST TAX**

#### **2.601 Tax Credit for Building in a Poverty Area (UJIP)**

A corporation operating an eligible business in a poverty area may take a credit against the corporate excise equal to the excess of the relevant local property tax rate over the average statewide property tax rate, multiplied by the assessed value of the corporation's real estate, and divided by \$1,000.

Origin: M.G.L. c. 63, § 38E

Estimate: \$0.1

#### **2.602 Investment Tax Credit**

Manufacturing corporations, research and development corporations and corporations engaged primarily in agriculture or commercial fishing are entitled to a credit against tax for investments in qualified tangible property. The amount of the credit is 3% of the cost or other basis of the property for federal income tax purposes. Total credits taken by a given corporation in a taxable year cannot exceed 50% of tax liability. Unused credits may be carried over to subsequent years. If property qualifying for the investment credit is disposed of or no longer in use, a corporation must repay in the year of disposition the portion of the credit allocable to the remaining useful life of the property.

Comment: Past estimates of this tax expenditure have been "dynamic". That is, they have included estimates of increased economic activity and tax collections that result from this credit. To be consistent with all other estimates in this document, this estimate is based on actual ITC claims of corporations from the most recent Corporate Excise Returns Report.

Origin: M.G.L. c. 63, § 31A

Estimate: \$52.9

#### **2.603 Vanpool Credit**

A corporation may take a credit against excise due equal to 30% of the cost incurred during the taxable year for the purchase or lease of company shuttle vans used in the Commonwealth for employee transportation.

Origin: M.G.L. c. 63, §§ 31D, 31E, and 31F

Estimate: \$0.4

#### **2.604 Research Credit**

Corporations are entitled to a credit against tax for research and development expenditures. The amount of the credit is equal to the sum of 10% of qualified research expenses each year in excess of a base amount, and 15%

## **Fiscal Year 2002 Tax Expenditure Budget – Corporate Excise Tax**

---

of basic research payments, in excess of a base amount. The credit is limited to the first \$25,000 of excise plus 75% of any excise in excess of \$25,000. Unused credits may be carried over to subsequent years. Effective January 1, 1995, qualified defense corporations may calculate this credit separately for defense related research expenditures and non-defense related expenditures.

Origin: M.G.L. c. 63, § 38M  
Estimate: \$87.0

- 2.605 **Economic Opportunity Area Credit**  
Businesses investing in qualified property in an Economic opportunity Area are entitled to a credit against tax of 5% of the cost of the property. To qualify for this credit, the property must be used exclusively in a certified project in an Economic Opportunity Area. To be certified, the Economic Assistance Coordinating Council must approve the project.

Origin: M.G.L. c. 63, § 38N  
Estimate: \$4.6

- 2.606 **Credit for Employing Former Full-Employment Program Participants**  
Employers who continue to employ former participants of the §110(1) full employment program in non-subsidized positions are eligible to receive a tax credit equal to \$100 per month for each month of non-subsidized employment, up to a maximum of \$1,200 per employee, per year.

Origin: St. 1995, c. 5, § 110(m)  
Estimate: N.A.

- 2.607 **Credit for Harbor Maintenance Taxes Paid**  
Effective July 1, 1996, a credit against the corporate excise is provided for federal harbor maintenance taxes paid.

Origin: M.G.L. c. 63, § 38P  
Estimate: \$2.3

### **2.700 ENTITY EXEMPT FROM TAXATION**

- 2.701 **Exemption of Credit Union Income**  
Credit unions, which are in effect mutual business organizations, are considered tax-exempt organizations for federal income tax purposes and therefore are exempt from the corporate excise as well.

Comment: The estimate applies to state-chartered credit unions only.

Origin: IRC § 501(c)(14)(A) and M.G.L. c. 63, § 30(1)  
Estimate: \$4.8

## **Fiscal Year 2002 Tax Expenditure Budget – Corporate Excise Tax**

---

2.702 Tax-Exempt Organizations  
Corporations considered to be tax-exempt under section 501 of the Internal Revenue Code (such as religious, scientific and educational organizations) are exempt from tax under the corporate excise. The non-taxation of their net income and property creates tax expenditure.

Origin: IRC § 501 and M.G.L. c. 63, § 30(1)  
Estimate: N.A.

2.703 Exemption for Regulated Investment Companies  
Corporate Regulated Investment Companies are exempt from the corporate excise. The non-taxation of their net income and property creates tax expenditure.

Origin: M.G.L. c. 63, §§ 30 and 38B  
Estimate: N.A.

---

**KEY: ORIGIN**  
**IRC** Federal Internal Revenue Code (26 U.S.C.)  
**M.G.L.** Massachusetts General Laws  
**U.S.C.** United States Code  
**ESTIMATES**  
All estimates are in \$ millions.

## **Fiscal Year 2002 Tax Expenditure Budget – Sales Tax**

---

Massachusetts imposes a sales and use tax on retail sales. In addition to the sales and use tax, there are several separate excises, each limited to a particular type of commodity. These special excises have not been included in this tax expenditure budget.

The Massachusetts sales and use tax, first imposed in 1966, is levied at a rate of 5%. The sales tax applies to sales made within the state, and the use tax to property and services purchased outside of Massachusetts but intended for use within the state.

Revenues from the sales and use tax represented 22.7% of total tax revenues for Fiscal Year 2000.

### **Sales and Use Tax: Basic Structure**

**Tax Base:** For the purposes of this tax expenditure budget, we have chosen not to make any assumptions about the base of the Massachusetts sales and use tax. Some people take a narrow view of what a retail sale is, limiting the term to sales to final consumers, i.e., individuals. Others would include sales to businesses, especially in instances where the purchase will not become an ingredient or component in a product to be sold. In an effort to acknowledge both theories, we will simply list the various exemptions under the sales tax. Some or many of these exemptions would be considered to be properly excluded from the tax base depending upon one's point of view.

**Taxable Unit:** The sales and use tax is an *in rem* tax; that is, it is levied on the property or service to be sold or used.

**Rate Structure:** The sales and use tax rate is 5% of the purchase price.

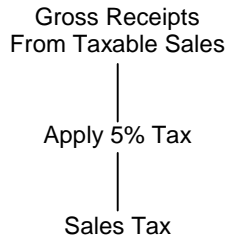
**Taxable Period:** The tax is imposed at the time of sale or use and remitted at specified intervals by the vendor.

**Interstate and International Aspects:** Massachusetts applies the destination principle to international and interstate sales. Accordingly, exports are exempt and imports are taxable under either the sales or the use tax. Similarly, taxable services performed in the Commonwealth but used outside of the Commonwealth are exempt from sales tax. Statutory exemptions for exports of property and for services used outside of the Commonwealth are therefore not listed as tax expenditures.

## Fiscal Year 2002 Tax Expenditure Budget – Sales Tax

---

### Computation of Massachusetts Sales and Use Tax by Vendor\*



---

\* A purchaser is also responsible for paying use tax directly to the Commonwealth on the sales price of taxable property or services purchased out-of-state and stored, used, or otherwise consumed in the Commonwealth, provided that a sales and use tax of 5% or more has not been paid separately to another state.

---

## **Fiscal Year 2002 Tax Expenditure Budget – Sales Tax**

---

### **Types of Tax Expenditures under the Sales Tax**

In the case of the sales tax, all tax expenditures are of a single type. They all result from the exclusion of certain transactions from the taxable base. The exclusion can be based on any of a number of characteristics of the transaction - who the buyer is, who the seller is, what the product or service is, what the product or service will be used for, etc. - but structurally all such tax expenditures operate in the same way. Hence, we have omitted the designation of tax expenditure types from the descriptions in this section.

### **List of Sales and Use Tax Expenditures**

#### **3.000 EXEMPT ENTITIES**

- 3.001 Exemption for Sales to the Federal Government  
Sales to the federal government are exempt from sales tax.

Origin: M.G.L. c. 64H, § 6(d)  
Estimate: N.A.

- 3.002 Exemption for Sales to the Commonwealth  
Sales to the Commonwealth, its agencies and political subdivisions are exempt from sales tax.

Origin: M.G.L. c. 64H, § 6(d)  
Estimate: N.A.

- 3.003 Exemption for Sales to Tax-Exempt Organizations  
Non-profit organizations are exempt from sales tax on purchases of goods and services to be used in carrying out their tax-exempt purposes.

Comment: This estimate excludes sales of building materials and supplies used in construction contracts, which are covered under item 3.412.

Origin: M.G.L. c. 64H, § 6 (e) and (x)  
Estimate: \$377.0

#### **3.100 EXEMPT PRODUCTS/SERVICES**

- 3.101 Exemption for Food  
Food for human consumption is exempt from sales tax, including food purchased with federal food stamps. The exemption does not cover meals served in restaurants and similar establishments. Meals are taxed under the sales tax at a rate of 5%.

Origin: M.G.L. c. 64H, § 6(h) and (kk)  
Estimate: \$388.5

## Fiscal Year 2002 Tax Expenditure Budget – Sales Tax

---

- 3.102      Exemption for Certain Food and Beverages Sold in Restaurants  
Although generally food and beverages sold in restaurants are taxed, there are certain exceptions. These are: a) food sold by weight, measure, count, or in unopened original containers or packages (for example, milk, meat, bread); b) beverages in unopened original containers which have a capacity of at least 26 fluid ounces; and c) bakery products sold in units of six or more.
- Origin: M.G.L. c. 64H, § 6(h)  
Estimate: N.A.
- 3.103      Exemption for Clothing  
Sales of clothing or footwear up to \$175 per item are exempt from sales tax. The exemption does not include special clothing or footwear designed for athletic or protective uses and not normally worn except for these uses.
- Origin: M.G.L. c. 64H, § 6(k)  
Estimate: \$238.1
- 3.104      Exemption for Medical and Dental Supplies and Devices  
Medical and dental supplies and devices, such as prescription drugs, oxygen, blood, artificial limbs and eyeglasses, are exempt from sales tax.
- Comment: Data was only available for some of the exempt items.
- Origin: M.G.L. c. 64H, § 6(l) and (z)  
Estimate: \$132.3
- 3.105      Exemption for Water  
Sales and service of water are exempt from sales tax.
- Origin: M.G.L. c. 64H, § 6(i)  
Estimate: \$34.6
- 3.106      Exemption for Newspapers and Magazines  
Newspapers and magazines are exempt from sales tax.
- Origin: M.G.L. c. 64H, § 6(m)  
Estimate: \$33.1
- 3.107      Exemption for the American Flag  
The American flag is exempt from sales tax.  
Origin: M.G.L. c. 64H, § 6(w)  
Estimate: N.A.

## Fiscal Year 2002 Tax Expenditure Budget – Sales Tax

---

- 3.108 Exemption for Certain Precious Metals  
Sales valued at \$1,000 or more of the following precious metals are exempt from the sales tax: rare coins of numismatic value; gold or silver bullion or coins; and gold or silver tender of any nation which is traded and sold according to its value as precious metal. Fabricated precious metals which have been processed or manufactured for industrial, professional, or artistic use do not qualify for the exemption.

Origin: M.G.L. c. 64H, § 6(l)  
Estimate: N.A.

- 3.109 Exemption for Cement Mixers  
Concrete mixing units mounted on the back of trucks are exempt from sales tax. Spare parts for such units are also exempt. The truck chassis is subject to sales tax.

Origin: M.G.L. c. 64H, § 6(y)  
Estimate: N.A.

- 3.110 Exemption for Fertilizers, Insecticides and Fungicides  
Fertilizers, insecticides and fungicides are exempt from sales tax.

Origin: M.G.L. c. 64H, § 6(p)  
Estimate: \$1.2

- 3.111 Exemption for Meals Served by Continuing Care Facilities  
Meals served by continuing care facilities to residents of those facilities are exempt from the sales tax on meals.

Origin: Uncodified  
Estimate: N.A.

### **EXEMPT, TAXED UNDER ANOTHER EXCISE**

#### **3.200**

- 3.201 Exemption for Alcoholic Beverages  
Alcoholic beverages, except those sold in restaurants and similar establishments, are exempt from sales tax. They are subject to an excise at a rate which is in most cases higher than 5% of the retail price. Exceptions are cider and beer. On these two items, the excise is equivalent to a sales tax rate of approximately 1% on cider and 2% on beer.

Comment: Revenues collected under the alcoholic beverages excise were \$61.0 million for Fiscal Year 1999, and 63.1 million for Fiscal Year 2000.

Origin: M.G.L. c. 64H § 6(g)



## Fiscal Year 2002 Tax Expenditure Budget – Sales Tax

---

Estimate: \$57.3

3.202 Exemption for Motor Fuels

Motor fuels are exempt from sales tax. They are subject to an excise at a rate higher than 5% of the retail price.

Comment: The estimate represents revenues that would be collected under the sales tax if all motor fuels were taxed at 5%. The Massachusetts motor fuels tax rate is currently 19.1% of the average price per gallon, with a \$.21 minimum.

Origin: M.G.L. c. 64H, § 6(g)

Estimate: \$179.5

**3.300 EXEMPT COMPONENT OF A PRODUCT OR CONSUMED IN PRODUCTION**

3.301 Exemption for Items Used in Making Clothing

Sales of materials used in making clothes, such as thread and fabric, are exempt from sales tax.

Origin: M.G.L. c. 64H, § 6(v)

Estimate: \$1.3

3.302 Exemption for Materials, Tools, Fuels and Machinery Used in Manufacturing  
Materials, tools, fuels and machinery, including spare parts, used in manufacturing are exempt from sales tax if they become components of a product to be sold or are consumed or directly used in the manufacturing process.

Comment: The estimate is only for machinery and equipment. Components are not included to avoid double counting.

Origin: M.G.L. c. 64H, § 6(r) and (s)

Estimate: \$214.5

3.303 Exemption for Materials, Tools, Fuels and Machinery Used in Research and Development

Materials, tools, fuels and machinery, including spare parts, used in research and development by certified manufacturing or research and development corporations are exempt from sales tax.

Origin: M.G.L. c. 64H, § 6(r) and (s)

Estimate: \$24.8

3.304 Exemption for Materials, Tools, Fuels, and Machinery Used in Furnishing Power to Consumers

## Fiscal Year 2002 Tax Expenditure Budget – Sales Tax

---

Materials, tools, fuels, and machinery, including spare parts, used in furnishing gas, water, steam, or electricity to consumers through mains, lines or pipes are exempt from sales tax if they are consumed or directly used in furnishing the power.

Origin: M.G.L. c. 64H, § 6(r) and (s)  
Estimate: \$61.5

- 3.305 Exemption for Materials, Tools, Fuels, and Machinery Used in Furnishing Power to an Industrial Manufacturing Plant  
Materials, tools, fuels, and machinery, including spare parts, used in furnishing power to an industrial manufacturing plant are exempt from sales tax if they are consumed or directly used in furnishing the power.

Origin: M.G.L. c. 64H, § 6(r) and (s)  
Estimate: \$20.5

- 3.306 Exemption for Materials, Tools, Fuels, and Machinery Used in Newspaper Printing  
Materials, tools, fuels, and machinery, including spare parts, used in newspaper printing are exempt from sales tax if they become components of a product to be sold or are consumed or directly used in newspaper publishing.

Comment: The estimate below excludes fuel inputs which are included in items 3.401, 3.402 and 3.403.

Origin: M.G.L. c. 64H, § 6(r)&(s)  
Estimate: \$24.0

- 3.307 Exemption for Certain Items Used in the Manufacturing of Cast Metal Products  
Patterns, molds, dies, tools, sandhandling equipment, and machinery, including spare parts, used exclusively in the manufacturing of cast metal products are exempt from sales tax.

Comment: To the extent the exemption covers machinery used in manufacturing, the estimate is included in item 3.302.

Origin: M.G.L. c. 64H, § 6(ee)  
Estimate: N.A.

- 3.308 Exemption for Materials, Tools, Fuels, and Machinery Used in Agricultural Production  
Materials, tools, fuels, and machinery, including spare parts, used in agricultural production are exempt from sales tax if they become components of products to be sold or are consumed or directly used in agricultural

## **Fiscal Year 2002 Tax Expenditure Budget – Sales Tax**

---

production. The exemption includes the same items when used for the production of livestock, poultry and animals in research.

Origin: M.G.L. c. 64H, § 6(r) and (s)  
Estimate: \$4.8

- 3.309 Exemption for Materials, Tools, Fuels, and Machinery Used in Commercial Fishing  
Materials, tools, fuels, and machinery, including spare parts, used in commercial fishing are exempt from sales tax if they become components of a product to be sold or are consumed or directly used in commercial fishing.

Origin: M.G.L. c. 64H, § 6(r) and (s)  
Estimate: \$1.1

- 3.310 Exemption for Materials, Tools, Fuels and Machinery Used in Commercial Radio and TV Broadcasting  
Materials, tools, fuels and machinery, including spare parts, used in commercial radio and TV broadcasting are exempt from sales tax.

Origin: M.G.L. c. 64H, § 6(r) and (s)  
Estimate: \$1.5

### **3.400 EXEMPTIONS FOR SPECIFIED USES OF PRODUCTS/SERVICES**

- 3.401 Exemption for Electricity  
Residential electricity, electricity purchased by businesses with five or fewer employees, and electricity purchased for qualified industrial use are exempt from sales tax.

Origin: M.G.L. c. 64H, § 6(i) and (qq)  
Estimate: \$172.9

- 3.402 Exemption for Fuel Used for Heating Purposes  
Residential heating fuel, heating fuel purchased by businesses with five or fewer employees and heating fuel purchased for qualified industrial use are exempt from sales tax.

Origin: M.G.L. c. 64H, § 6(j) and (qq)  
Estimate: \$69.1

- 3.403 Exemption for Piped and Bottled Gas  
Residential gas, gas purchased by businesses with five or fewer employees and gas purchased for qualified industrial use are exempt from sales tax.

Origin: M.G.L. c. 64H, § 6(i) and (qq)  
Estimate: \$55.0

## Fiscal Year 2002 Tax Expenditure Budget – Sales Tax

---

- 3.404      Exemption for Steam  
Residential steam, steam purchased by businesses with five or fewer employees and steam purchased for qualified industrial use are exempt from sales tax.
- Origin: M.G.L. c. 64H, § 6(i) and (qq)  
Estimate: \$4.0
- 3.405      Exemption for Certain Energy Conservation Equipment  
Equipment for a solar, wind or heat pump system used as a primary or auxiliary energy source in a principal residence is exempt from sales tax.
- Origin: M.G.L. c. 64H, § 6(dd)  
Estimate: N.A.
- 3.406      Exemption for Funeral Items  
Coffins, caskets, and other funeral items are exempt from sales tax.
- Origin: M.G.L. c. 64H, § 6(n)  
Estimate: \$7.1
- 3.407      Exemption for a Motor Vehicle for a Paraplegic  
A motor vehicle owned and registered for the personal use of a paraplegic is exempt from sales tax.
- Origin: M.G.L. c. 64H, § 6(u)  
Estimate: \$1.0
- 3.408      Exemption for Textbooks  
Textbooks and other books required for instruction in educational institutions are exempt from sales tax.
- Origin: M.G.L. c. 64H, § 6(m)  
Estimate: \$9.2
- 3.409      Exemption for Books Used for Religious Worship  
Bibles, prayer books and other books used for religious worship are exempt from sales tax.
- Origin: M.G.L. c. 64H, § 6(m)  
Estimate: N.A.
- 3.410      Exemption for Containers  
Most containers are exempt from sales tax. These include sales of empty returnable and non-returnable containers to be filled and resold, containers

## **Fiscal Year 2002 Tax Expenditure Budget – Sales Tax**

---

whose contents are exempt from the sales tax and returnable containers when sold with the contents or resold for refilling.

Origin: M.G.L. c. 64H, § 6(q)  
Estimate: \$104.8

- 3.411 Exemption for Certain Sales by Typographers, Composers Color Separators  
Sales by typographers, composers or color separators of composed type, film positives and negatives and reproduction proofs, or transfers of such items to a printer, publisher, or manufacturer of folding boxes for use in printing, are exempt from sales tax.

Origin: M.G.L. c. 64H, § 6(gg)  
Estimate: N.A.

- 3.412 Exemption for Sales of Building Materials and Supplies to be Used in Connection with Certain Construction Contracts  
Materials and supplies used in connection with construction contracts with the United States and Massachusetts and its subdivisions are tax exempt where the construction is for public purposes. Materials and supplies used in connection with construction contracts with a tax-exempt organization are tax exempt where the construction is to be used exclusively in carrying out the organization's charitable purpose. The exemption includes rentals of equipment as well.

Origin: M.G.L. c. 64H, § 6(f)  
Estimate: \$99.0

- 3.413 Exemption for Plants and Seeds  
Plants and parts of plants suitable for planting to produce food for human consumption are exempt from sales tax.

Origin: M.G.L. c. 64H, § 6(p)  
Estimate: \$1.8

- 3.414 Exemption for Feed  
Feed for livestock and poultry to be sold or to be used for human consumption or research, and feed for pelt-producing animals, is exempt from sales tax.

Origin: M.G.L. c. 64H, § 6(p)  
Estimate: \$1.7

- 3.415 Exemption for Livestock and Poultry  
Livestock and poultry of a kind ordinarily used for human consumption are exempt from sales tax.

Origin: M.G.L. c. 64H, § 6(p)

## Fiscal Year 2002 Tax Expenditure Budget – Sales Tax

---

Estimate: N.A.

- 3.416      Exemption for Commercial Fishing Vessels  
Vessels, machinery, equipment and spare parts used exclusively in commercial fishing are exempt from sales tax.
- Origin: M.G.L. c. 64H, § 6(o)  
Estimate: \$1.1
- 3.417      Exemption for Commuter Boats  
Vessels, materials, tools, repair and spare parts used exclusively to provide scheduled commuter passenger service are exempt from sales tax.
- Origin: M.G.L. c. 64H, § 6(pp)  
Estimate: N.A.
- 3.418      Exemption for Fuels, Supplies and Repairs for Vessels Engaged in Interstate or Foreign Commerce  
Fuels, supplies and repairs for vessels engaged in interstate or foreign commerce are exempt from sales tax.
- Comment: Data were available only for fuels sold to bunkering vessels.
- Origin: M.G.L. c. 64H, § 6(o)  
Estimate: \$1.4
- 3.419      Exemption for Fuel Used in Operating Aircraft and Railroads  
Fuel used in operating aircraft and railroads is exempt from sales tax.
- Comment: At a community's option, jet fuel may be subject to a local tax at a rate of \$0.05 per gallon or 5%, whichever is higher.
- Origin: M.G.L. c. 64H, § 6(j)  
Estimate: \$24.0
- 3.420      Exemption for Sales of Certain New or Used Buses  
New and used buses which provide scheduled intra-city local service and are used by common carriers certified by the Department of Public Utilities are exempt from sales tax. The exemption includes replacement parts, materials and tools used to maintain or repair these buses.
- Origin: M.G.L. c. 64H, § 6(aa)  
Estimate: N.A.

## **Fiscal Year 2002 Tax Expenditure Budget – Sales Tax**

---

- 3.421      Exemption for Films  
Motion picture films for commercial exhibition are exempt from sales tax.
- Origin: M.G.L. c. 64H, § 6(m)  
Estimate: N.A.
- 3.422      Exemption for Telephone and Telegraph Services  
Sales of residential telecommunications services of up to \$30 per month are exempt from sales tax.
- Origin: M.G.L. c. 64H, § 6(i)  
Estimate: \$46.2
- 3.500      EXEMPT NOT TAXABLE AS TANGIBLE PERSONAL PROPERTY**
- 3.501      Nontaxation of Transfers of Real Property  
Real estate is exempt from sales tax but is subject to a deeds excise at a rate of 0.456% of the taxable price of the property. The estimate represents revenues that would be collected under the sales tax if sales of real property were taxed at 5%.
- Origin: General exclusion of real property transactions  
Estimate: \$2,220.9
- 3.502      Nontaxation of Rentals of Real Property  
Rental charges for real property are exempt from sales tax. However, rentals of rooms in hotels, motels or lodging houses are subject to a state excise at a rate of 5.0% of the rental price and, at a community's option, to a local excise of up to 4% of the rental price.
- Origin: General exclusion of real property transactions  
Estimate: \$658.5
- 3.503      Nontaxation of Certain Services  
Certain services are not subject to sales tax.
- Comment: This estimate includes a range of services to individuals and businesses which are excluded from taxation by their omission from the statutory definition of services.
- Origin: M.G.L. c. 64H  
Estimate: \$6,228.1
- 3.504      Nontaxation of Internet Access and Related Services  
Internet access services, electronic mail services, electronic bulletin board

## **Fiscal Year 2002 Tax Expenditure Budget – Sales Tax**

---

services, web hosting services or similar on-line computer services are not subject to the sales and use tax.

Origin: M.G.L. c. 64H § 1  
Estimate: \$22.3

### **3.600 MISCELLANEOUS EXEMPTIONS**

#### **3.601 Exemption for Casual or Isolated Sales**

Casual or isolated sales (sales by private parties) are exempt from sales tax, except casual sales of motor vehicles, trailers, airplanes and boats. Sales of these listed items are exempt only when they are between family members.

Origin: M.G.L. c. 64H, §§ 6(c) and M.G.L. c. 64I, § 7(b)  
Estimate: N.A.

#### **3.602 Exemption for Vending Machine Sales**

Vending machine sales of ten cents or less are exempt from sales tax. In addition, sales through vending machines which exclusively sell snacks and candy with a sales price of less than one dollar are exempt from the sales tax on meals.

Origin: M.G.L. c. 64H, § 6(h) and (t)  
Estimate: N.A.

#### **3.603 Exemption for Certain Meals**

Meals prepared by churches and hospitals, meals provided to organizations for the elderly, and meals provided by educational institutions are exempt from sales tax.

Comment: Estimate is for school lunches only.

Origin: M.G.L. c. 64H, § 6(cc)  
Estimate: \$6.3

#### **3.604 Exemption for Certain Bed and Breakfast Establishments from Sales Tax on Meals and Room Occupancy Excise**

Owner-occupied one, two and three-room bed and breakfast establishments are exempt from both the sales tax on meals and the room occupancy excise.

Origin: M.G.L. c. 64G, § 1, 2, 3, 3A and 6, and M.G.L. c. 64H, § 6(h)  
Estimate: N.A.

#### **3.605 Exemption for Certain Summer Camps from Sales Tax on Meals and Room Occupancy Excise**

An exemption from both the sales tax on meals and the room occupancy



## Fiscal Year 2002 Tax Expenditure Budget – Sales Tax

---

excise is provided for summer camps for children age 18 and under, or for summer camps for developmentally disabled individuals. Camps that satisfy the above criteria but offer their facilities during the off-season to individuals 60 years of age or over for 30 days or less in any calendar year will not lose their exemption.

Comment: Estimate is for meals only.

Origin: M.G.L. c. 64G, § 2 and M.G.L. c. 64H, § 6(cc)

Estimate: \$0.5

- 3.606 Exemption for Trade-in Allowances for Motor Vehicles and Trailers  
Motor vehicles and trailers bought in a trade-in transaction are only subject to sales tax on the excess of the purchase price over the amount credited for the trade-in.

Origin: M.G.L c. 64H, 26, c. 64I, § 27

Estimate: \$54.1

- 3.607 Exemption for Publications of Tax-Exempt Organizations  
The publications of tax-exempt organizations are exempt from sales tax.

Comment: Data were available only for books published by tax-exempt organizations.

Origin: M.G.L. c. 64H, § 6(m)

Estimate: \$3.1

- 3.608 Exemption for Gifts of Scientific Equipment  
Gifts of scientific equipment or apparatus by manufacturers to non-profit educational institutions or to the Massachusetts Technology Park Corporation are exempt from sales tax.

Origin: M.G.L. c. 64H, §§ 6(jj)

Estimate: \$13.3

- 3.609 Exemption for Vessels or Barges of 50 Tons or Over  
Vessels or barges weighing 50 tons or over are exempt from sales tax when constructed in-state and sold by the builder.

Origin: M.G.L. c. 64H, § 6(o)

Estimate: N.A.

- 3.610 Exemption for Rental Charges for Refuse Containers  
Rental charges in connection with service contracts by and between waste service firms and customers for refuse containers or bins are exempt from

---

## Fiscal Year 2002 Tax Expenditure Budget – Sales Tax

---

sales tax when the containers are placed on the customer's premises by waste service firms.

Origin: M.G.L. c. 64H, § 6(ii)  
Estimate: N.A.

- 3.611 Exemption for Honor Trays  
Food items purchased from honor trays are exempt from sales and meals taxes, provided that no item on the honor tray is sold for \$1 or more.

Comment: Honor trays are vending carts in workplaces from which snacks may be purchased on the honor system.

Origin: M.G.L. c. 64H, § 6 (h)  
Estimate: N.A.

---

**KEY:**           **ORIGIN**  
                  **M.G.L.**           Massachusetts General Laws  
                  **ESTIMATES**  
                  All estimates are in \$ millions.

---

## **Fiscal Year 2002 Tax Expenditure Budget – Appendix A**

### **Recent Law Changes Affecting Tax Expenditures**

---

*The following tax expenditures have been revised or created due to recent law changes:*

#### **The Personal Income Tax :**

Part A and Part B tax rates were scheduled to decline to 5.75% by calendar year 2002. The passage of the initiative ballot question number 4 in November 2000 will further reduce the Part A and Part B tax rates to 5.00%, phased in over calendar years 2001 to 2003. Currently, the rate schedule is: 5.6% in 2001; 5.3% in 2002; and 5.0% in 2003. This reduction also lowers most of the tax expenditure estimates in Section 1, *Personal Income Tax*, because it lowers the baseline tax collection estimate from which the tax expenditures are calculated.

Capital Gains Tax Law Revisions (budget item 1.202). Retroactive to January 1, 1996, taxpayers with long-term capital losses can offset these losses against interest and dividend income, without limitation.

Seniors Property Tax Circuit Breaker (budget item 1.608). Effective January 1, 2001, taxpayers over 65 years of age may claim a tax credit for local property tax payments or 25% of their rental payments that exceed 10% of their adjusted gross income.

Low Income Housing Tax Credit (budget item 1.607). Effective January 1, 2001, investors in low-income housing units may claim a tax credit.

Earned Income Credit (budget item 1.605). Effective January 1, 2001, taxpayers may claim a Massachusetts tax credit equal to 15% (an increase from the current 10%) of the earned income tax credit claimed on their federal returns.

Dependent Under 12 deduction (budget item 1.406) Effective January 1, 2001, the deduction for filers with one dependent under 12 years of age will increase from \$1,200 to \$2,400, and to \$3,600 effective January 1, 2002. For filers with more than one dependent, the deduction will increase from \$1,200 to \$4,800 effective January 1, 2001, and to \$7,200 effective January 1, 2002.

Child/Dependent Care Expenses Deduction (budget item 1.409). Effective January 1, 2001, the cap on deductible dependent or child care expense for taxpayers with one dependent will be raised from \$2,400 to \$3,600, and will be further raised to \$4,800 effective January 1, 2002. For taxpayers with more than one dependent, the deduction will be raised from \$2,400 to \$4,800 effective January 1, 2001, and to \$9,600 effective January 1, 2002.

Higher Education Student Loan Deduction (budget item 1.414). Effective January 1, 2001, certain restrictions on the deductibility of student loan interest expense will be removed.

Rental Deduction (budget item 1.411). Effective January 1, 2001, the rental deduction will be increased from \$2,500 to \$3,000.

## **Fiscal Year 2002 Tax Expenditure Budget – Appendix A**

### **Recent Law Changes Affecting Tax Expenditures**

---

Adoption Expense Deduction (budget item 1.408.) Effective January 1, 2001, all adoption expenses will be deductible, as opposed to those adoption expenses that exceed 3% of a filer's adjusted gross income, which is currently the case.

The passage of the initiative ballot question number 7 in November 2000 created a state income tax deduction for charitable contributions effective January 2001.

## Fiscal Year 2002 Tax Expenditure Budget – Appendix B Summary Table

Fiscal Year Estimates (in \$ millions)

Tax Expenditure	Item Number	FY00	FY01	FY02
-----------------	----------------	------	------	------

The following table shows tax expenditure estimates for the three major taxes from Fiscal Year 2000 to Fiscal Year 2002. In general, the revenue estimate for a tax expenditure tends to follow the anticipated growth of tax collections. However, year-to-year changes in estimates may vary for four other principal reasons: we have new data sources; we have refined our methodology; we have relied on federal tax expenditure estimates which have changed; or we have revised estimates to account for changes in tax laws.

Where possible, we have recalculated past estimates based on revised data, improved methodologies, and changes in statute.

Fiscal Year Estimates (in \$ millions)

Tax Expenditure	Item Number	FY2000 <sup>1</sup>	FY2001 <sup>1</sup>	FY2002
-----------------	----------------	---------------------	---------------------	--------

### PERSONAL INCOME TAX

#### Exclusions from Gross Income

Exemption of Premiums on Accident and Accidental Death Insurance	1.001	1.5	1.4	1.4
Exemption of Premiums on Group-Term Life Insurance	1.002	14.9	15.2	15.1
Exemption of Interest on Life Insurance Policy and Annuity Cash Value	1.003	182.4	182.4	178.8
Exemption of Employer Contributions for Medical Insurance Premiums and Medical Care	1.004	432.0	441.6	443.1
Exemption of Annuity or Pension Payments to Firemen and Policemen	1.005	N.A.	N.A.	N.A.
Exemption of Distributions from Certain Contributory Pension and Annuity Plans	1.006	N.A.	N.A.	N.A.

## Fiscal Year 2002 Tax Expenditure Budget – Appendix B Summary Table

Fiscal Year Estimates (in \$ millions)				
Tax Expenditure	Item Number	FY00	FY01	FY02
Exemption of Railroad Retirement Benefits	1.007	4.6	4.6	4.5
Exemption of Public Assistance Benefits	1.008	101.7	101.2	99.2
Exemption of Social Security Benefits	1.009	516.2	515.3	506.3
Exemption of Workers' Compensation Benefits	1.010	4.1	4.2	4.1
Exemption of Dependent Care Expenses	1.011	4.0	3.9	4.6
Exemption of Certain Foster Care Payments	1.012	4.0	4.0	3.9
Exemption of Payments Made to Coal Miners	1.013	Negligible	Negligible	Negligible
Exemption of Rental Value of Parsonages	1.014	3.0	2.9	2.7
Exemption of Scholarships and Fellowships	1.015	12.5	13.3	13.7
Exclusion of Certain Prizes and Awards	1.016	N.A.	N.A.	N.A.
Exemption of Cost-Sharing Payments	1.017	Negligible	Negligible	Negligible
Exemption of Meals and Lodging Provided at Work	1.018	6.0	5.8	5.5
Treatment of Business-Related Entertainment Expenses	1.019	N.A.	N.A.	N.A.
Exemption of Income from the Sale, Lease or Transfer of Certain Patents	1.020	N.A.	N.A.	N.A.
Exemption of Capital Gains on Home Sales for Persons 55 and Over	1.021	62.5	46.6	47.0
Nontaxation of Capital Gains at Death	1.022	88.9	81.7	80.7
Exemption of Interest from Massachusetts Obligations	1.023	94.9	95.3	93.2
Exemption of Benefits and Allowances to Armed Forces Personnel	1.024	4.5	4.1	4.1

## Fiscal Year 2002 Tax Expenditure Budget – Appendix B Summary Table

Fiscal Year Estimates (in \$ millions)				
Tax Expenditure	Item Number	FY00	FY01	FY02
Exemption of Veterans' Pensions, Disability Compensation and G.I. Benefits	1.025	15.4	15.6	15.4
Exemption of Military Disability Pensions	1.026	0.4	0.4	0.4
Exemption of Compensation to Massachusetts-Based Nonresident Military Personnel	1.027	5.2	5.0	4.7
Exemption of Income Received by Persons Killed in Military Action or Terrorist Activity	1.028	N.A.	N.A.	N.A.
Exemption of Retirement Pay of the Uniformed Services	1.029	18.0	19.0	20.0
<b>Deferrals of Gross Income</b>				
Net Exemption of Employer Contributions and Earnings of Private Pension Plans	1.101	566.1	583.3	575.2
Treatment of Incentive Stock Options	1.102	N.A.	N.A.	N.A.
Exemption of Earnings on Stock Bonus Plans or Profit Sharing Trusts	1.103	N.A.	N.A.	N.A.
Exemption of Earnings on IRA and Keogh Plans	1.104	141.1	141.6	145.4
Deferral of Capital Gains on Home Sales	1.105	N.A.	N.A.	N.A.
Nontaxation of Capital Gains at Time of Gift	1.106	N.A.	N.A.	N.A.
<b>Deductions from Gross Income</b>				
Capital Gains Deduction	1.201	N.A.	N.A.	N.A.
Deduction of Capital Losses against Interest and Dividend Income	1.202	10.0	10.0	10.0
Excess Natural Resource Depletion Allowance	1.203	2.1	2.1	2.0
Abandoned Building Renovation Deduction	1.204	2.2	2.5	2.8
<b>Accelerated Deductions from Gross Income</b>				
Accelerated Depreciation on Rental Housing	1.301	10.4	10.1	10.3

## Fiscal Year 2002 Tax Expenditure Budget – Appendix B Summary Table

Fiscal Year Estimates (in \$ millions)				
Tax Expenditure	Item Number	FY00	FY01	FY02
Accelerated Depreciation on Rehabilitation of Low Income Housing	1.302	N.A.	N.A.	N.A.
Accelerated Depreciation on Buildings (other than Rental Housing)	1.303	6.4	4.4	4.2
Accelerated Cost Recovery System (ACRS) for Equipment	1.304	36.4	34.3	30.7
Deduction for Excess First-Year Depreciation	1.305	2.7	3.1	3.0
Five-Year Amortization of Start-Up Cost	1.306	1.3	1.2	1.2
Five-Year Amortization of Certain Operating Rights	1.307	N.A.	N.A.	N.A.
Expensing of Exploration and Development Costs	1.308	Negligible	Negligible	Negligible
Expensing of Research and Development Expenditures in One Year	1.309	N.A.	N.A.	N.A.
Five-Year Amortization of Pollution Control Facilities	1.310	N.A.	N.A.	N.A.
Seven Year Amortization for Reforestation	1.311	N.A.	N.A.	N.A.
Expensing of Certain Capital Outlays of Farmers	1.312	0.5	0.6	0.6
<b>Deductions from Adjusted Gross Income</b>				
Deduction for Employee Social Security and Railroad Retirement Payments	1.401	314.7	317.6	314.0
Deduction for Employee Contributions to Public Pension Plans	1.402	N.A.	N.A.	N.A.
Additional Exemption for the Elderly	1.403	20.8	20.6	20.1
Additional Exemption for the Blind	1.404	1.1	1.1	1.0
Dependents Exemption where the Child Earns Income	1.405	N.A.	N.A.	N.A.
Deduction for Dependent Under 12	1.406	34.2	48.3	106.8
Personal Exemption for Students Aged 19 or Over	1.407	6.0	6.6	6.3



## Fiscal Year 2002 Tax Expenditure Budget – Appendix B Summary Table

Fiscal Year Estimates (in \$ millions)				
Tax Expenditure	Item Number	FY00	FY01	FY02
Deduction for Adoption Fees	1.408	0.7	0.8	0.7
Deduction for Business-Related Child Care Expenses	1.409	15.1	16.6	19.8
Exemption of Medical Expenses	1.410	27.9	28.2	28.0
Rent Deduction	1.411	94.9	96.6	104.6
Nontaxation of Charitable Purpose Income of Trustees, Executors or Administrators	1.412	N.A.	N.A.	N.A.
Exemption of Interest on Savings in Massachusetts Banks	1.413	10.3	10.4	10.5
Tuition Tax Deduction	1.414	24.0	27.0	30.0
Charitable Contributions Tax Deduction	1.415	N.A.	80.0	175.0
<b>Preferential Rate of Taxation</b>				
Preferential Treatment of Interest on Savings in Massachusetts Banks	1.501	0.0	0.0	0.0
<b>Credits Against Tax</b>				
Renewable Energy Source Credit	1.601	0.5	0.6	0.6
Credit for Removal of Lead Paint	1.602	1.8	1.9	1.9
Economic Opportunity Area Credit	1.603	0.9	0.9	0.9
Credit for Employing Former Full-Employment Program Participants	1.604	N.A.	N.A.	N.A.
Earned Income Credit	1.605	39.3	40.3	61.7
Septic System Repair Credit	1.606	18.0	18.0	18.0
Low Income Housing Tax Credit	1.607	N.A.	1.0	4.0
Refundable Credit Against Property Tax for Seniors ("circuit Breaker")	1.608	N.A.	10.0	30.0

## Fiscal Year 2002 Tax Expenditure Budget – Appendix B Summary Table

		Fiscal Year Estimates (in \$ millions)		
Tax Expenditure	Item Number	FY00	FY01	FY02
<b>Subtotal<sup>2</sup></b>		<b>2,966.2</b>	<b>3,083.4</b>	<b>3,267.8</b>
 <b>CORPORATE EXCISE</b>				
 <b>Exclusions from Gross Income</b>				
Small Business Corporations	2.001	43.4	31.5	26.2
Exemption of Income from the Sale, Lease or Transfer of Certain Patents	2.002	NA	NA	NA
 <b>Deferrals of Gross Income</b>				
Deferral of Tax on Certain Shipping Companies	2.101	0.1	0.1	0.1
 <b>Deductions from Gross Income</b>				
Charitable Deduction	2.201	14.7	16.1	17.7
Additional Deduction for Certain Businesses in a Poverty Area (UJIP)	2.202	0.6	0.6	0.7
Net Operating Loss (NOL) Carryover	2.203	128.3	129.6	130.9
Excess Natural Resource Depletion Allowance	2.204	0.1	0.1	0.1
Deduction for Certain Dividends of Cooperatives	2.205	NA	NA	NA
Abandoned Building Renovation Deduction	2.206	1.3	1.6	1.8
 <b>Accelerated Deductions from Gross Income</b>				
Accelerated Depreciation on Rental Housing	2.301	1.5	1.5	1.5
Accelerated Depreciation for Rehabilitation of Low-Income Housing	2.302	NA	NA	NA
Expensing for Removal of Barriers to the Handicapped	2.303	0.3	0.3	0.3
Five-Year Amortization of Start-Up Cost	2.304	0.3	0.3	0.3

## Fiscal Year 2002 Tax Expenditure Budget – Appendix B Summary Table

Fiscal Year Estimates (in \$ millions)				
Tax Expenditure	Item Number	FY00	FY01	FY02
Accelerated Cost Recovery System (ACRS) for Equipment	2.305	167.3	163.1	160.4
Deduction for Excess First-Year Depreciation	2.306	1.4	1.4	1.4
Accelerated Depreciation on Buildings (other than Rental Housing)	2.307	10.6	8.5	8.5
Expensing Research and Development Expenditures in One Year	2.308	46.3	44.7	46.3
Expensing of Exploration and Development Costs	2.309	0.3	0.4	0.4
Five-Year Amortization of Certain Operating Rights	2.310	NA	NA	NA
Five-Year Amortization of Pollution Control Facilities	2.311	NA	NA	NA
Expensing of Certain Expenditures for Alternative Energy Sources	2.312	0.6	0.6	0.7
Seven-Year Amortization for Reforestation	2.313	NA	NA	NA
<b>Adjustments to Apportionment Formula</b>				
Unequal Weighting of Sales, Payroll, and Property in Apportionment Formula	2.401	243.9	258.2	268.2
<b>Exclusions from Property Component</b>				
Nontaxation of Certain Energy Property	2.501	NA	NA	NA
Exemption for Property Subject to Local Taxation	2.502	101.2	105.7	109.6
<b>Credits Against Tax</b>				
Tax Credit for Building in a Poverty Area (UJIP)	2.601	0.1	0.1	0.1
Investment Tax Credit	2.602	46.2	51.0	52.9
Vanpool Credit	2.603	0.4	0.4	0.4
Research Credit	2.604	76.5	81.6	87.0
Economic Opportunity Area Credit	2.605	4.3	4.4	4.6

## Fiscal Year 2002 Tax Expenditure Budget – Appendix B Summary Table

Fiscal Year Estimates (in \$ millions)				
Tax Expenditure	Item Number	FY00	FY01	FY02
Credit for Employing Former Full-Employment Program Participants	2.606	NA	NA	NA
Credit for Harbor Maintenance Taxes Paid	2.607	2.0	2.1	2.3
<b>Entity Exempt from Taxation</b>				
Exemption of Credit Union Income	2.701	4.2	4.5	4.8
Tax-Exempt Organizations	2.702	NA	NA	NA
Exemption for Regulated Investment Companies	2.703	NA	NA	NA
<b>Subtotal<sup>2</sup></b>		<b>895.7</b>	<b>908.3</b>	<b>927.0</b>
 <b>SALES AND USE TAX</b>				
<b>Exempt Entities</b>				
Exemption for Sales to the Federal Government	3.001	N.A.	N.A.	N.A.
Exemption for Sales to the Commonwealth	3.002	N.A.	N.A.	N.A.
Exemption for Sales to Tax-Exempt Organizations	3.003	322.0	348.4	377.0
<b>Exempt Products/Services</b>				
Exemption for Food	3.101	368.3	379.3	388.5
Exemption for Certain Food and Beverages Sold in Restaurants	3.102	N.A.	N.A.	N.A.
Exemption for Clothing	3.103	225.7	232.5	238.1
Exemption for Medical and Dental Supplies and Devices	3.104	124.2	128.6	132.3
Exemption for Water	3.105	31.8	33.2	34.6
Exemption for Newspapers and Magazines	3.106	30.5	31.9	33.1
Exemption for the American Flag	3.107	N.A.	N.A.	N.A.
Exemption for Certain Precious Metals	3.108	N.A.	N.A.	N.A.

## Fiscal Year 2002 Tax Expenditure Budget – Appendix B Summary Table

Fiscal Year Estimates (in \$ millions)				
Tax Expenditure	Item Number	FY00	FY01	FY02
Exemption for Cement Mixers	3.109	N.A.	N.A.	N.A.
Exemption for Fertilizers, Insecticides and Fungicides	3.110	1.1	1.2	1.2
Exemption for Meals Served by Continuing Care Facilities	3.111	N.A.	N.A.	N.A.
<b>Exempt, Taxed Under Another Excise</b>				
Exemption for Alcoholic Beverages	3.201	51.8	54.7	57.3
Exemption for Motor Fuels	3.202	155.4	171.8	179.5
<b>Exempt Component of a Product or Consumed in Production</b>				
Exemption for Items Used in Making Clothing	3.301	1.2	1.2	1.3
Exemption for Materials, Tools, Fuels, and Machinery Used in Manufacturing	3.302	187.6	204.3	214.5
Exemption for Materials, Tools, Fuels, and Machinery Used in Research and Development	3.303	26.4	25.6	24.8
Exemption for Materials, Tools, Fuels, and Machinery Used in Furnishing Power to Consumers	3.304	56.6	59.0	61.5
Exemption for Materials, Tools, Fuels, and Machinery Used in Furnishing Power to an Industrial Manufacturing Plant	3.305	18.9	19.7	20.5
Exemption for Materials, Tools, Fuels, and Machinery Used in Newspaper Printing	3.306	22.2	23.2	24.0
Exemption for Materials, Tools, Fuels, and Machinery Used in Manufacturing of Cast Metal Products	3.307	N.A.	N.A.	N.A.
Exemption for Materials, Tools, Fuels, and Machinery Used in Agricultural Production	3.308	4.4	4.6	4.8
Exemption for Materials, Tools, Fuels, and Machinery Used in Commercial Fishing	3.309	1.1	1.1	1.1
Exemption for Materials, Tools, Fuels, and Machinery Used in Radio and TV Broadcasting	3.310	1.5	1.5	1.5

## Fiscal Year 2002 Tax Expenditure Budget – Appendix B Summary Table

Fiscal Year Estimates (in \$ millions)				
Tax Expenditure	Item Number	FY00	FY01	FY02
<b>Exemptions for Specified Uses of Products/Services</b>				
Exemption for Electricity	3.401	159.0	166.3	172.9
Exemption for Fuel Used for Heating Purposes	3.402	63.5	66.4	69.1
Exemption for Piped and Bottled Gas	3.403	50.6	52.9	55.0
Exemption for Steam	3.404	4.0	4.0	4.0
Exemption for Certain Energy Conservation Equipment	3.405	N.A.	N.A.	N.A.
Exemption for Funeral Items	3.406	6.6	6.9	7.1
Exemption for a Motor Vehicle for a Paraplegic	3.407	1.0	1.0	1.0
Exemption for Textbooks	3.408	8.5	8.8	9.2
Exemption for Books used for Religious Worship	3.409	N.A.	N.A.	N.A.
Exemption for Containers	3.410	99.2	102.3	104.8
Exemption for Certain Sales by Typographers, Compositors and Color Separators	3.411	N.A.	N.A.	N.A.
Exemption for Sales of Building Materials and Supplies to be Used in Connection with Certain Construction Contracts	3.412	93.9	96.7	99.0
Exemption for Plant and Seed	3.413	1.5	1.6	1.8
Exemption of Feed	3.414	1.7	1.7	1.7
Exemption for Livestock and Poultry	3.415	N.A.	N.A.	N.A.
Exemption for Commercial Fishing Vessels	3.416	1.1	1.1	1.1
Exemption for Commuter Boats	3.417	N.A.	N.A.	N.A.
Exemption for Fuels, Supplies, and Repairs for Vessels Engaged in Interstate or Foreign Commerce	3.418	1.3	1.3	1.4
Exemption for Fuel Used in Operating Aircraft and Railroads	3.419	14.0	22.3	24.0
Exemption for Sales of Certain New and Used Buses	3.420	N.A.	N.A.	N.A.

## Fiscal Year 2002 Tax Expenditure Budget – Appendix B Summary Table

Fiscal Year Estimates (in \$ millions)				
Tax Expenditure	Item Number	FY00	FY01	FY02
Exemption for Films	3.421	N.A.	N.A.	N.A.
Exemption for Telephone and Telegraph Services	3.422	43.8	45.1	46.2
<b>Exempt, Not Taxable as Tangible Personal Property</b>				
Nontaxation of Transfers of Real Property	3.501	1,785.7	1,991.4	2,220.9
Nontaxation of Rentals of Real Property	3.502	598.8	624.5	658.5
Nontaxation of Certain Services	3.503	5,009.7	5,610.9	6,228.1
Nontaxation of Internet Access and Related Services	3.504	13.6	17.4	22.3
<b>Miscellaneous Exemptions</b>				
Exemption for Casual or Isolated Sales	3.601	N.A.	N.A.	N.A.
Exemption for Vending Machine Sales	3.602	N.A.	N.A.	N.A.
Exemption for Certain Meals	3.603	6.0	6.1	6.3
Exemption for Certain Bed and Breakfast Establishments from Sales Tax on Meals and Room Occupancy Excise	3.604	N.A.	N.A.	N.A.
Exemption for Certain Summer Camps from Sales Tax on Meals and Room Occupancy Excise	3.605	0.5	0.5	0.5
Exemption for Trade-in Allowances for Motor Vehicles and Trailers	3.606	52.0	53.0	54.1
Exemptions for Publications of Tax-Exempt Organizations	3.607	2.9	3.0	3.1
Exemption for Gifts of Scientific Equipment	3.608	12.6	13.0	13.3
Exemption for Vessels or Barges 50 Tons and Over	3.609	N.A.	N.A.	N.A.
Exemption for Rental Charges for Refuse Containers	3.610	N.A.	N.A.	N.A.
Exemption for Honor Trays	3.611	N.A.	N.A.	N.A.
<b>Subtotal<sup>2</sup></b>		<b>9,662.0</b>	<b>10,620.0</b>	<b>11,601.1</b>

**Fiscal Year 2002 Tax Expenditure Budget – Appendix B  
Summary Table**

Fiscal Year Estimates (in \$ millions)					
Tax Expenditure	Item Number	FY00	FY01	FY02	
<b>GRAND TOTAL</b>		<b>13,523.9</b>	<b>14,611.7</b>	<b>15,795.9</b>	

**ENDNOTES:**

1. Estimates have been revised because of new data or improved methodology, and reflect current tax law.
2. Subtotals and totals have been provided to give an idea of the revenue costs of tax expenditures by tax and in total. However, these sums should be used with extreme caution. The underlying estimates do not take into account such factors as the interaction of tax expenditures and taxpayer behavior. Also it should be noted that many estimates are not available due to a lack of data. These estimates are shown as N.A. and are not included in the subtotals and totals.



## Fiscal Year 2001 Tax Expenditure Budget – Appendix C Glossary

---

**Amortization:** Annual deduction allowed for the gradual exhaustion or obsolescence of intangible assets having a limited useful life which are used in the production of income, such as patents and copyrights; analogous to depreciation of tangible assets.

**Capital Expenditure:** An expenditure made in acquiring, adding to or bettering a fixed asset. For accounting purposes, capital expenditures are not charged against current revenue. They are added to capital account or "capitalized" and then may be depreciated, amortized, or recovered when a business is sold. To be distinguished from an expense.

**Credit:** Amount by which a taxpayer is allowed to reduce a tax liability, as computed by applying the tax rates to the tax base; to be distinguished from a deduction from the tax base.

**Deduction:** Amount which a taxpayer is allowed to subtract from the gross tax base.

**Depreciation:** Annual deduction allowed for the gradual exhaustion or obsolescence of tangible property used in the production of income.

**Exclusion:** The legal elimination from the tax base of items recognized as falling within its definition. The federal term for what is sometimes called an exemption for Massachusetts. (See below.)

**Exemption:** The legal elimination from the tax base of items or transactions recognized as falling within its definition, or of taxable units which would normally be subject to tax.

**Expense:** A revenue expenditure or cost which, for accounting purposes, is charged against current revenue. To be distinguished from a capital expenditure.

**Gross income:** The total of all items included in the concept of income that a taxpayer receives during the taxable period.

**Net income:** Amount remaining after subtracting exempt income and deductions from gross income.

**Personal exemption:** A specific amount or percentage of net income on which the tax rate is zero. To be distinguished from an exemption as defined above, which applies to a class of income or taxpayers. Sometimes called an "allowance".

**Taxable income:** Amount to which the tax rates are applied in computing tax liability, after subtracting personal exemptions from net income.