

Massachusetts Hate Crimes, 2008



Commonwealth Fusion Center

September, 2009

Executive Summary

The 2008 Hate Crime report for Massachusetts was compiled using data voluntarily supplied from police departments across the Commonwealth. The Commonwealth Fusion Center's Crime Reporting Unit received a total of 332 reports of incidents of hate crime (down from 350 in 2007, a decrease of 5.14%) from 81 municipal police departments, transit police, and 10 campus police agencies. An additional 226 municipal police departments, 22 campus police agencies, 21 state police locations, six transit police locations, and two specialized agencies reported zero hate crimes during 2008. The 332 incidents encompassed 516 criminal charges (down from 586 in 2007, a decrease of 11.94%).

A "hate crime" is defined as a criminal act in which bias against race, religion, ethnicity, handicap, gender, or sexual orientation is recognized as a contributing factor. Accordingly, hate crime reporting does not capture incidents of bias that do not amount to crimes. Similarly, if a crime is motivated by bias, but the bias indicator is not reported by the victim or noted by the investigating police department, it will not be reported.

Examining the 2008 submissions for hate crimes revealed that prejudice against race/ethnicity or national origin was the most widely reported bias motivation, representing 57.7% of the total. Bias against sexual orientation is second, with 22.1% of the total, and religious bias is third with 18.6% of the total. (Please refer to Table 6 in the Appendix).

Notably, for the second year in a row, the female gender is on the rise as both the victim and offender with respect to hate crimes. In 2008 females comprised 37.4% of victims compared to 33.2% in 2007 (an increase of 11.2%) and 26.7% in 2006 (an increase of 28.6% in the two year timeframe). They constituted 21.1% of offenders in 2008 versus 17.4% in 2007 (an increase of 17.5%) and 13.8% in 2006 (an increase of 34.6% over the two years). (For a breakdown of victim and offender gender, please refer to Tables 23 and 24.) Echoing previous years, males were still the most frequent victims (62%) and offenders (78.9%) of hate crimes. Whites were also the most frequent racial category as victims (57.1%) and also as offenders (65.6%). Black victims of both genders composed 35% of the total population of victims. (For a breakdown of bias types by primary victim's race, see Table 4.)

Victims were reported to be injured in a small percentage of cases. Police officers investigating these incidents reported there was no visible injury to the victim. (Please refer to Table 26 for breakdown by injuries.)

Bias incidents reported by police in Massachusetts occur in a variety of locations, both public and private. In 2008 29.6% of incidents occurred on a highway or street, while an additional 29.3% occurred in a residence. The third most frequent locations were schools/colleges at 12.3% in 2008, while approximately another 3.1% of incidents occurred at religious sites such as churches or synagogues. (See Table 20 for breakdown of locations.)

Hate crimes in 2008 focused on specific victims rather than religious, ethnic or government symbols. Individuals were primarily the targets for bias crimes in the commonwealth, with 77.4% of the reports, and in a departure from 2007, "Other Targets" (for example, businesses or government facilities) were second with 12.6% of the reports (in 2007, private property was second). In 2008, private property was the third most frequently targeted group, in 7.8% of the reports. Police cited religious facilities as the fourth most frequently targeted, in 1.5% of the incidents. (Please refer to Table 16.)

Specific types of bias motivations were reported to police departments as well. The largest category of bias incidents were determined to be anti-black, with 32.6% of all incidents, or 112 of the incidents reported. Another 18% or 62 incidents were classified as anti-gay. Anti-Semitic and anti-white cases ranked third and

fourth, at 15.7% and 13.1% respectively, in frequency of occurrence. Discrimination against the Islamic religion or persons from Arab countries was reported in 3.2% of cases (up from 2.75% in 2007). (See Table 6.)

Bias crimes entail a variety of different criminal offenses ranging from violent crimes to vandalism and harassment. Of the 516 criminal offenses reported in 2008, the significant portion involved vandalism (25%), with harassment (20%) and threats (15.1%) following close behind. There were 35 aggravated assaults reported, a decrease of 32.7% from the 52 aggravated assaults reported in 2007. (Please refer to Table 5 for breakdown of criminal offenses).

The reporting system also captures information on the types of weapons used in the commission of the offense. Matching 2007, firearms were used in only 2 cases, accounting for less than 1% (0.7%) of the incidents. Use of knives decreased significantly from the 17 cases in 2007 (5.4%) to only 5 cases in 2008 (1.8%). No use of weapons was reported in 59.6% of the 282 reports in which this information was provided, up 8.8% from 2007. In 63 incidents, hands, fists or feet were used (22.3%). (See Table 21 for breakdown by weapon.)

Definitions

Hate Crime Any criminal act to which a bias motive is evident as a contributing factor. The Reporting Act covers bias on account of race, religion, ethnicity, handicap, gender, or sexual orientation. Hate crimes can be reported only by law enforcement agencies.

Zero Report An official report by a police department stating that no hate crimes were reported to the department during the reporting period.

Non-reporting agencies Local police departments and other law enforcement agencies which are not in compliance with the reporting provisions of the Reporting Act. These agencies have failed to indicate how many, if any, bias crimes occurred in their jurisdiction.

Reporting agencies Local police departments and other law enforcement agencies which have voluntarily reported the incidence of identified bias crimes in their jurisdiction. Agencies can comply with the Reporting Act by reporting the number of bias crimes, even if zero. Participating agencies which reported zero hate crimes for 2008 are separately listed.

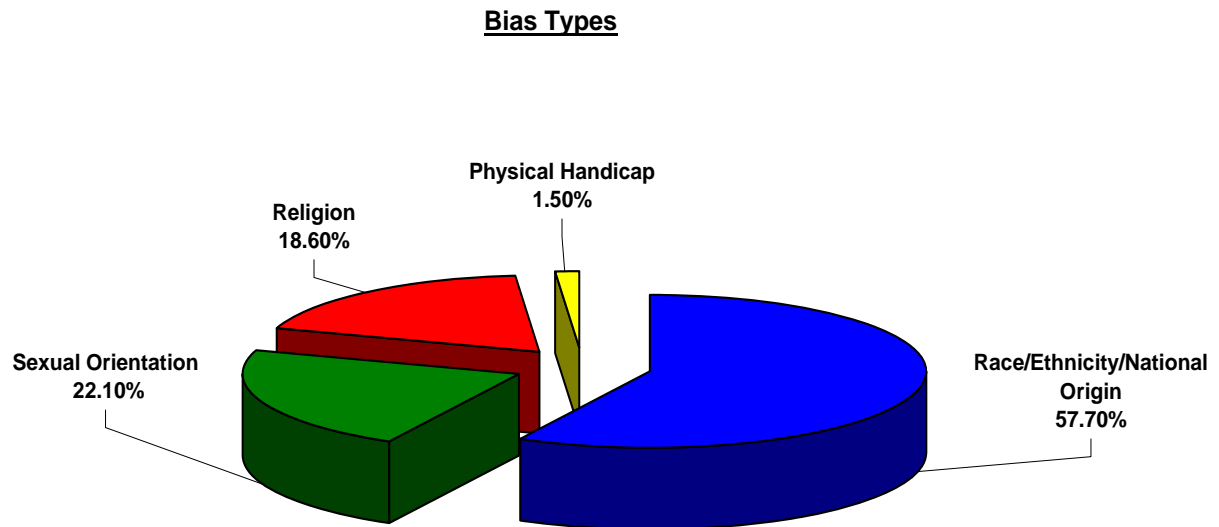
Reports by Law Enforcement Agencies

Hate crimes were reported by 81 local police departments, transit police and 10 campus police agencies. The local police departments reporting represented a total population of 3,039,649. A total of 332 hate crime reports were filed by these agencies, which included 516 criminal offenses and 343 reported bias motivations (down 5.5% from 363 in 2007). An additional 226 municipal police departments, 22 campus police agencies, 21 state police locations, six transit police locations, and two specialized agencies submitted Zero Reports for 2008. These municipalities represented a total population of 3,208,097. Forty-nine municipal police agencies, twelve campus police departments and one state police location did not participate in the hate crime reporting program. These 49 cities and towns had a total population of 101,351.

In the statistics that follows, it should be noted that a single incident report may include multiple offenses, bias motivations, victims or offenders. As a result, totals in some categories may exceed the number of reports. Similarly, some reports omit information in certain categories, resulting in totals lower than the number of incident reports collected.

Categories of Bias Reported

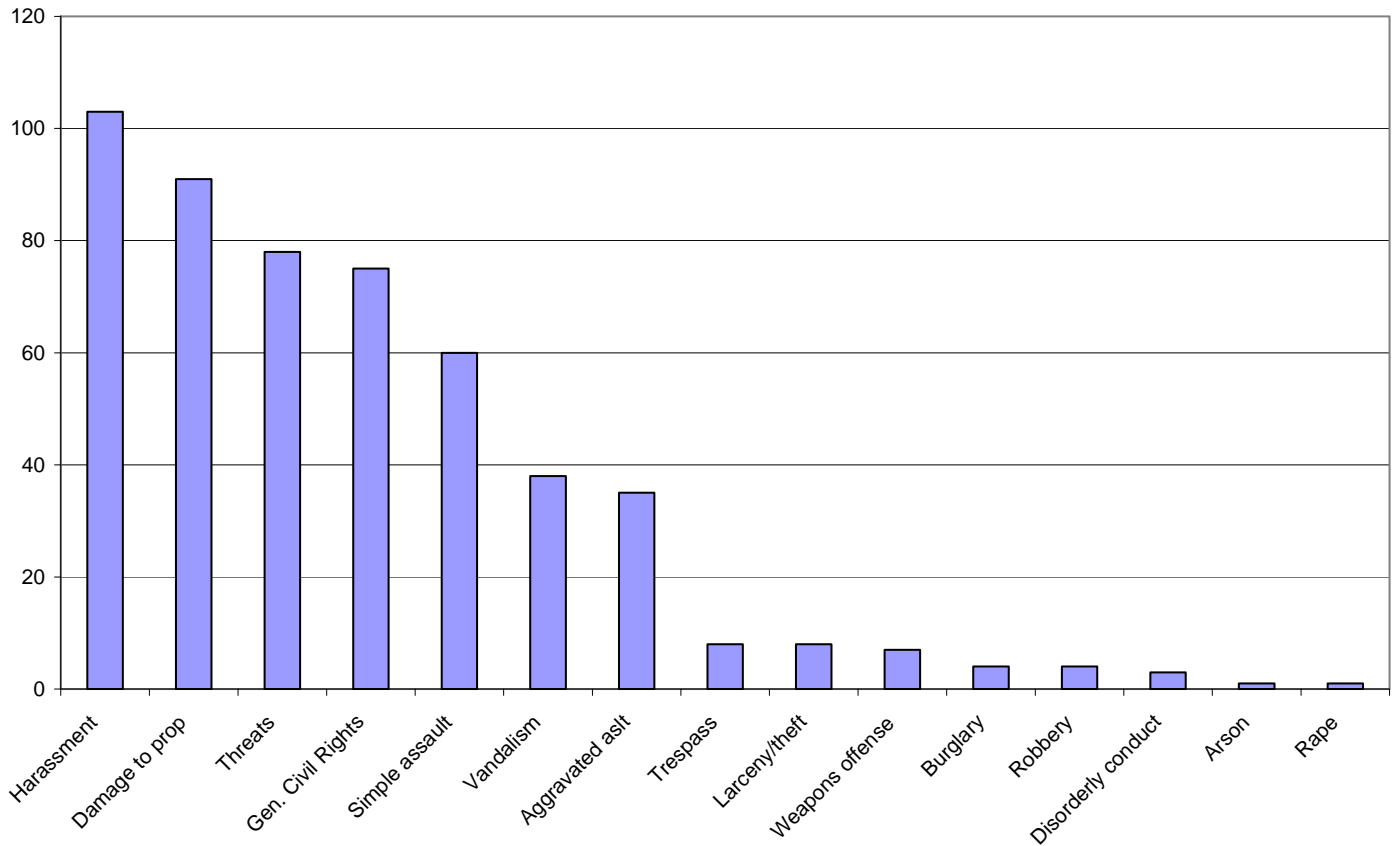
Bias motivations break down as follows: of the 332 bias motivations for particular incidents reported, race/ethnicity/national origin bias constituted the largest category of reported motives, with 57.7% of the total. Offenses motivated by sexual orientation bias were the second most frequent category, with 22.1% of the total (down from 24.5% in 2007). Offenses related to religious affiliation were the third most prevalent, with 18.6% (up from 17% in 2007), while offenses against mental or physical handicap status were reported as 1.5% of the total (triple the 2007 rate of 0.5%).



Categories of Crimes Reported

Of the total of 516 crimes reported, harassment and threats were the most frequent offenses, representing 35% of the total. Vandalism and destruction of property were the second most frequent offenses, representing 25% of the total. Other frequent crime categories were General Civil Rights violations (14.5%), simple assault (11.62%), and aggravated assault (6.8%).

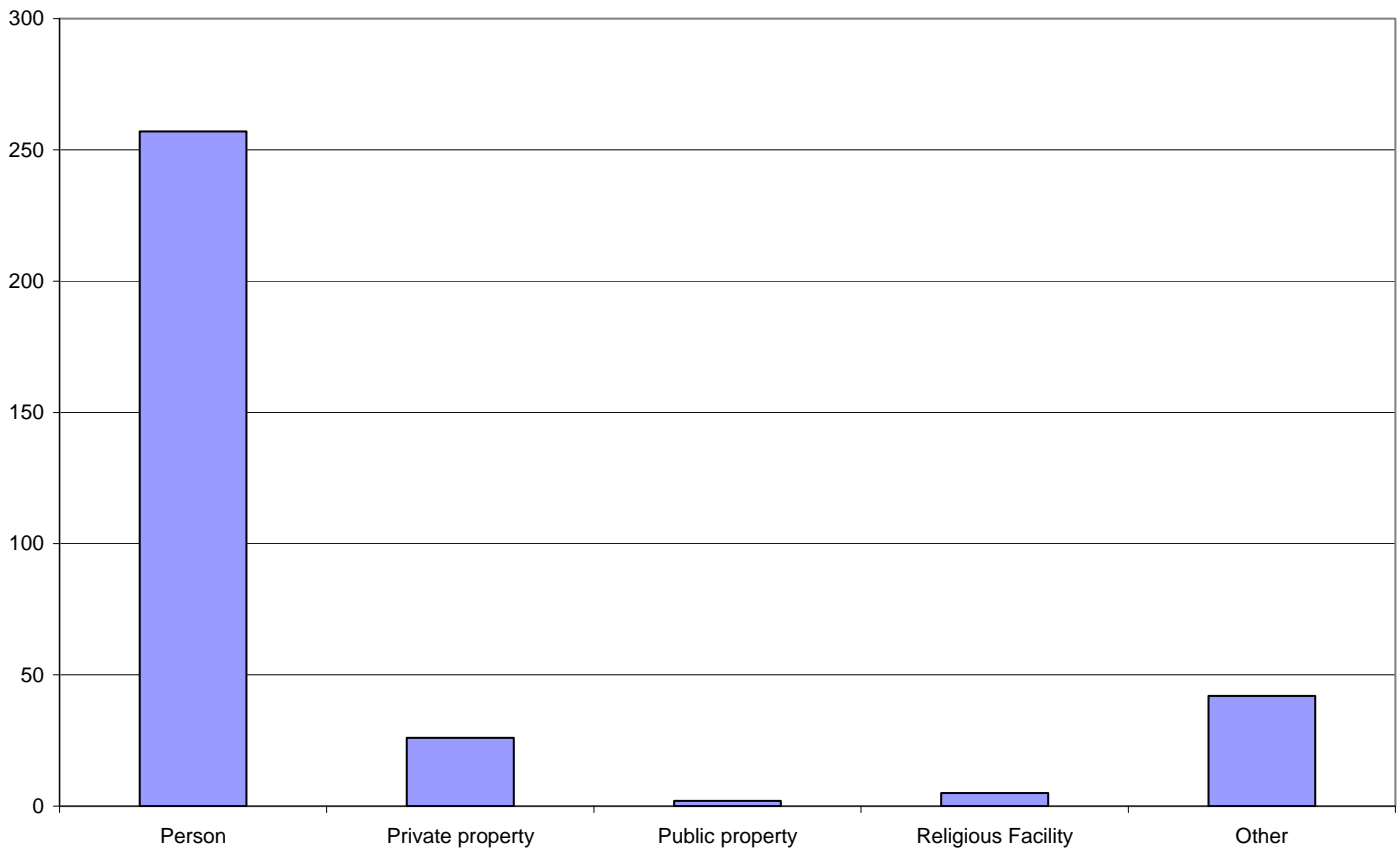
Crimes Committed During Bias Incident



Victim and Offender Profile

Of the cases with valid information, a person was the target in 77.4% of cases. In a departure from 2007, “Other” was the second most frequent target of bias crimes with 12.6% of incidents (in 2007, schools/colleges were the second most frequently targeted). Private property was the third most frequently targeted (7.8%), and fourth was religious facility (1.5%). (In 2007, the third most frequent target was parking lots/garages and fourth most frequent were commercial/office buildings).

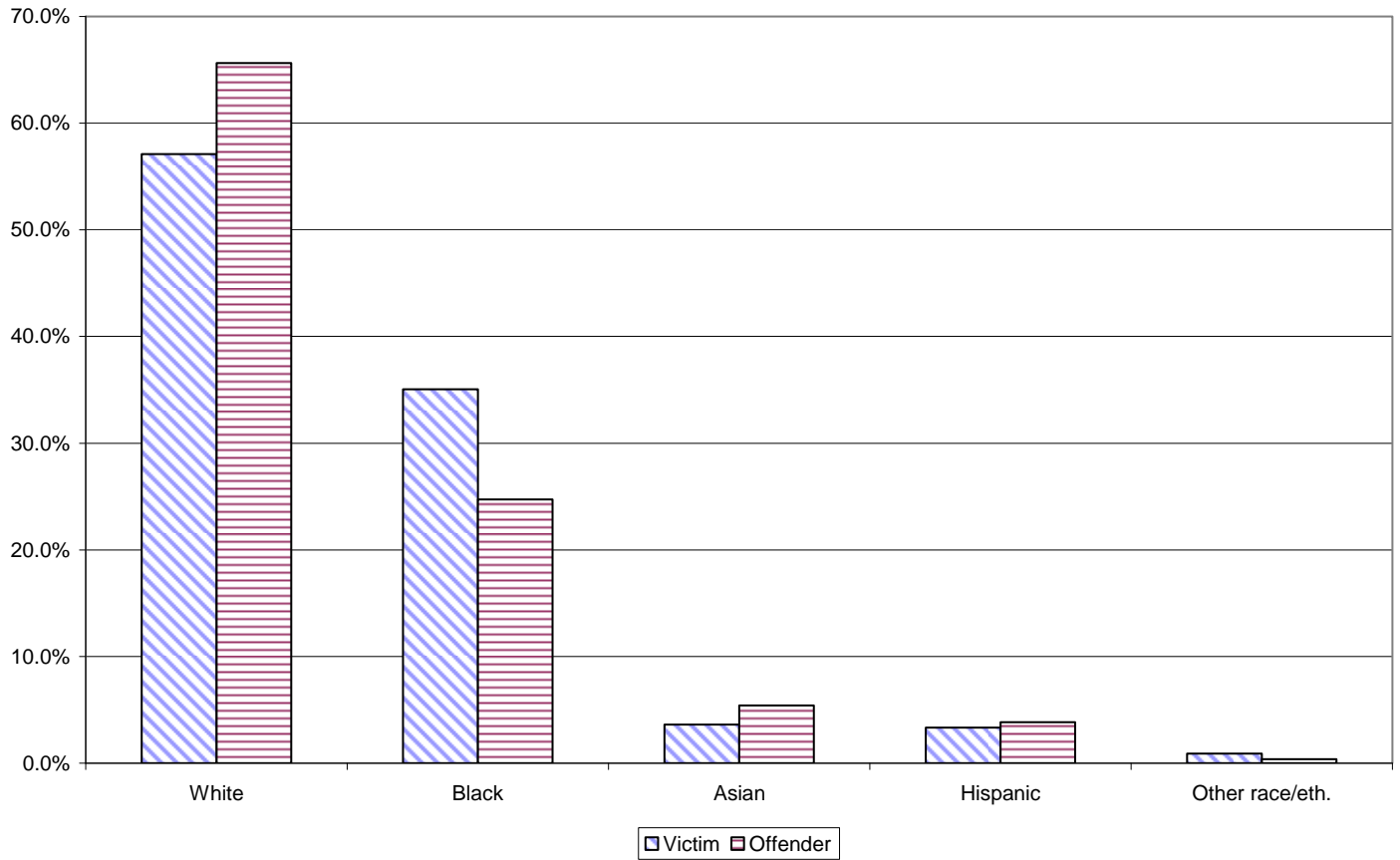
Target of Bias Crime



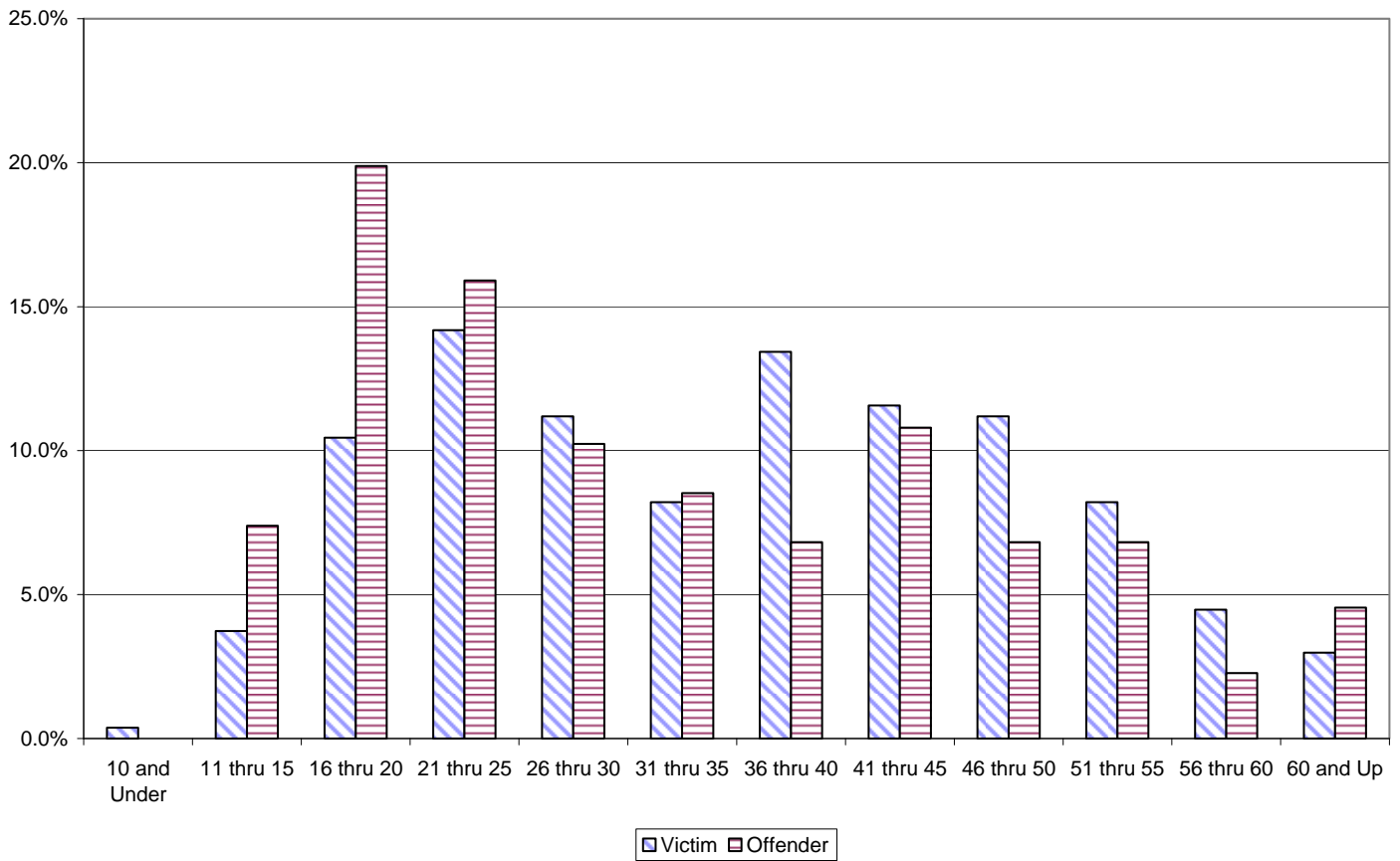
The victim(s) of hate crimes (in cases where the victim's race was available) were white in 57.1% of cases, black in 35% of cases. The victims were male in 62% of cases. Of the cases where the victim(s)'s age group was reported, the most frequently reported age group was 21-25 years of age.

The perpetrator(s) of hate crimes were white in 65.6% of cases, and black in 24.7% of cases, in the 259 cases where this information was available. The perpetrator was male in 78.9% of cases, of the cases where the offender(s)'s age group was reported, the most frequently reported age group was 16-20 years of age. In a reversal of 2007, there were more offenders in the 60 and Up age group than victims (4.5% of offenders versus 3.0% of victims in 2008; in 2007 4.15% of offenders versus 4.71% of victims).

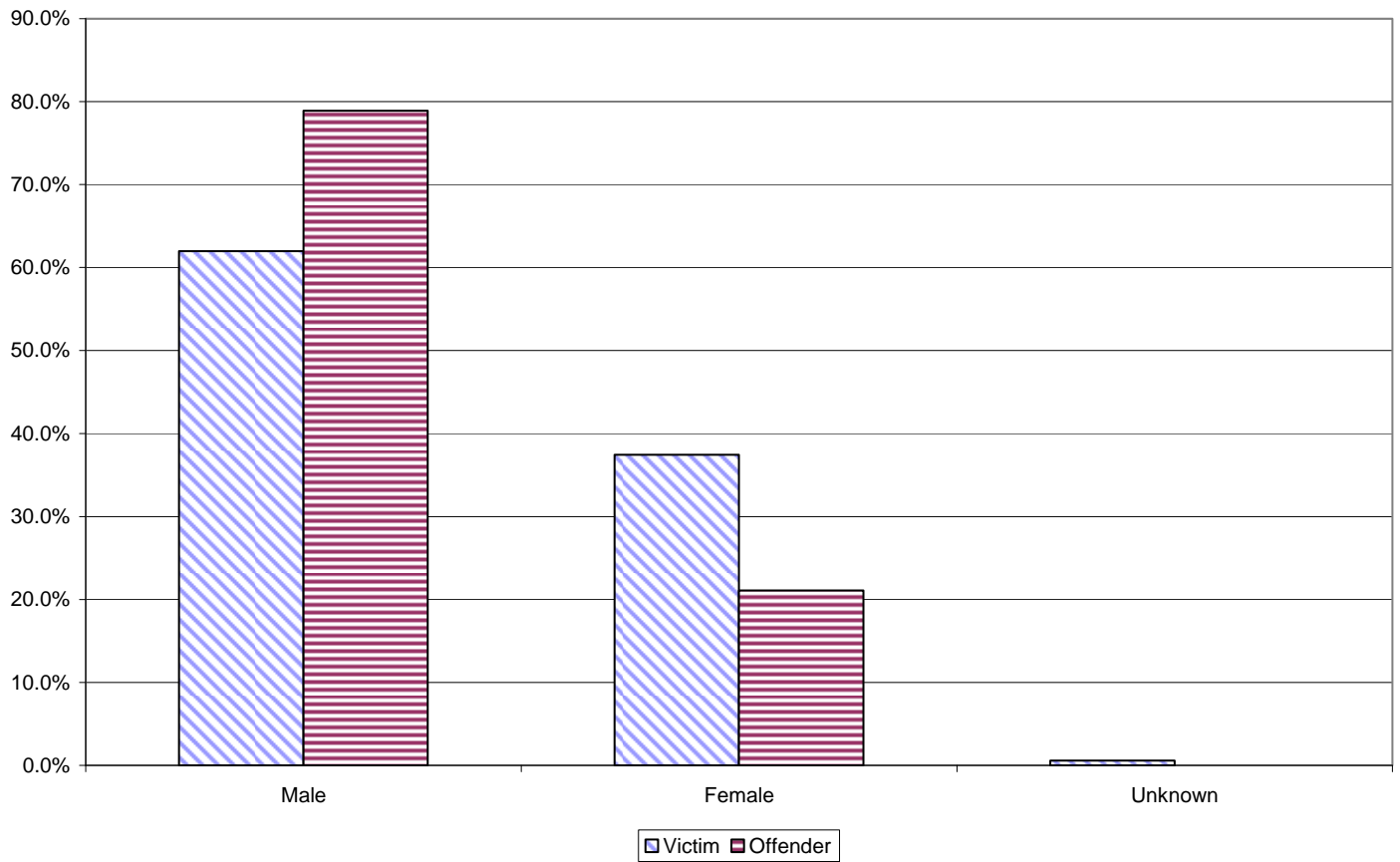
Victim & Offender Race



Victim & Offender Age



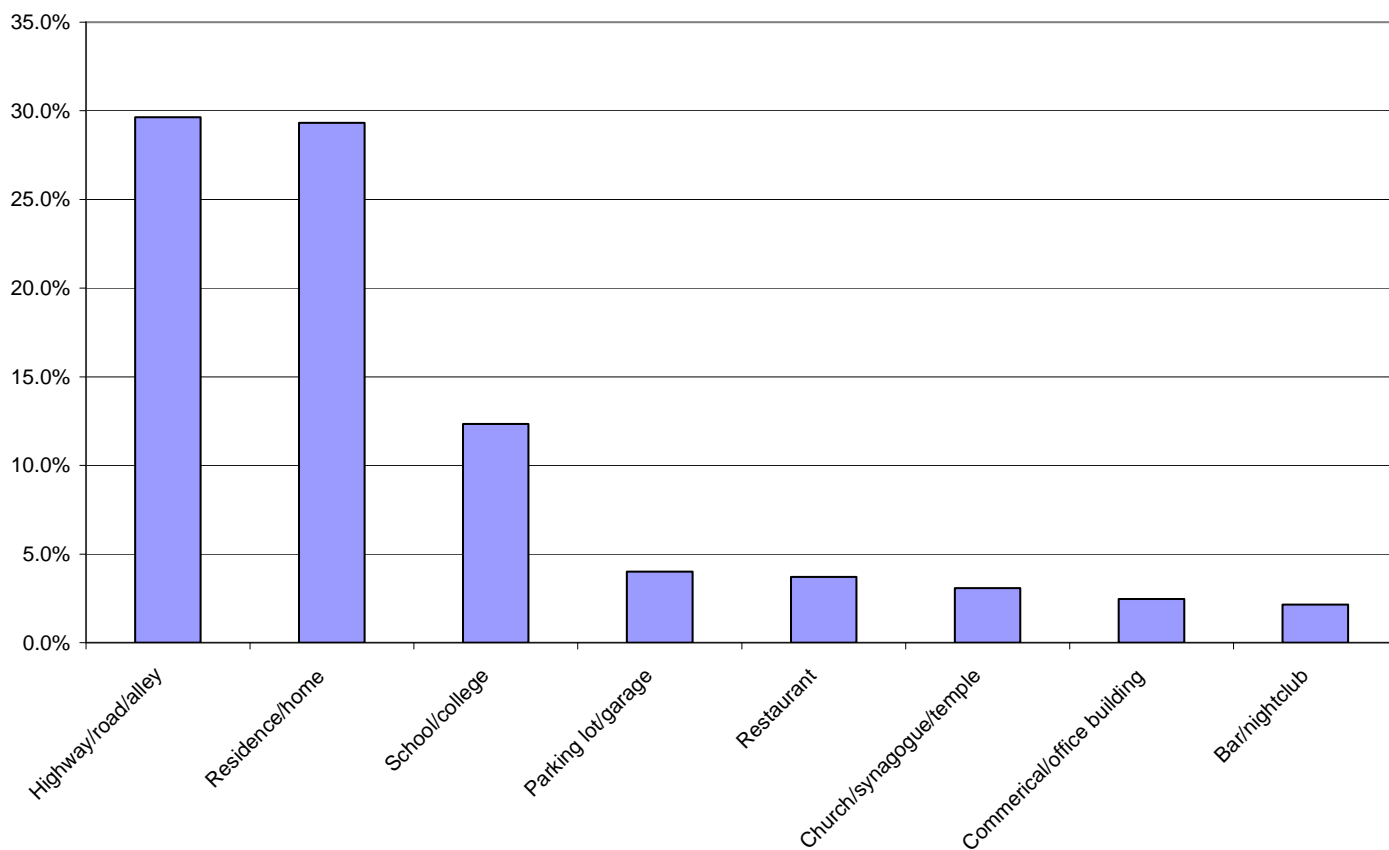
Victim & Offender Gender



Characteristics of the Incidents

The majority of incidents occurred on either a highway or street (29.6%) or in a residence (29.3%). Other locations where incidents occurred were schools/colleges (12.3%), parking lots/garages (4%), restaurants (3.7%), religious facilities (3.1%), commercial/office buildings (2.5%) and bars/nightclubs (2.2%).

Location of Bias Crime



Weapons of some type were used in 96 incidents (40.4%), a decrease of 37.7% from 2007, when weapons were used in 154 incidents. In cases where the type of weapon was identified (including “None”), hands/fist/feet were used the most (22.3% of the time). “Other weapons” were listed in 13.5%, and knives were used in 1.8% of cases.

Appendix

Table 1: Crimes Committed during Bias Attacks		
	Hate Crimes	% of Total
Harassment	103	20.0%
Damage to prop	91	17.6%
Threats	78	15.1%
Gen. Civil Rights	75	14.5%
Simple assault	60	11.6%
Vandalism	38	7.4%
Aggravated Assault	35	6.8%
Trespass	8	1.6%
Larceny/theft	8	1.6%
Weapons offense	7	1.4%
Burglary	4	0.8%
Robbery	4	0.8%
Disorderly conduct	3	0.6%
Arson	1	0.2%
Rape	1	0.2%
Total	516	100.0%

Table 2: Bias Types as Reported to Police		
	Bias Types	% of Total
Anti-Black	112	32.6%
Anti-gay (male)	62	18.0%
Anti-Semitic	54	15.7%
Anti-White	45	13.1%
Anti-Hispanic	22	6.4%
Anti-Lesbian	13	3.8%
Anti-Asian	12	3.5%
Anti-Islamic	6	1.7%
Anti-Arab	5	1.5%
Anti-physical handicap	5	1.5%
Anti-Catholic	4	1.2%
Anti-other race/eth.	2	0.6%
Anti-other sexual	1	0.3%
Total	343	100.0%

Table 3: Crimes by Primary Victim's Race						
Criminal Offense	Black	White	Asian	Hispanic	Other race/eth.	Total
Vandalism	8	13		3		24
Harassment	40	49	7	4	1	101
Disorderly conduct	1	2				3
Trespass	3	4			1	8
Threats	32	35	6	1		74
Damage to prop	10	29	2	2		43
Weapons offense	3	4				7
Simple assault	25	28	2	4		59
Larceny/theft		8				8
Burglary		3				3
Aggravated Assault	9	23	1		1	34
Robbery		3				3
Gen. Civil Rights	33	34	3	1	1	72
Total	93	148	10	8	2	439

Table 4: Bias Types by Primary Victim's Race						
	Black	White	Asian	Hispanic	Other race/eth.	Total
Anti-Black	74	18		1		93
Anti-White	2	41				43
Anti-Asian		1	11			12
Anti-Hispanic	2	12		6		20
Anti-Arab	2	1			1	4
Anti-other race/eth.	2					2
Anti-Semitic	2	18				20
Anti-Catholic		2				2
Anti-Islamic	2	3				5
Anti-gay (male)	9	43		3	2	57
Anti-Lesbian	1	10				11
Anti-other sexual		1				1
Anti-physical handicap		4				4
Total	96	154	11	10	3	274

Table 5: Crimes by County of Occurrence

	Barns.	Berk.	Brist	Essex	Frank.	Hampden	Hampsh.	Middle.	Norfolk	Plym.	Suffolk	Worc.	Total
Vandalism		1		1				4			32		38
Harassment								1			102		103
Disorderly Conduct		1									2		3
Trespass				1				1			6		8
Threats		1	1	4			1	6	1	2	60	2	78
Damage to Property	3	4	4	3	2	7	5	15	7	6	26	9	91
Weapons Offense											7		7
Arson											1		1
Simple Assault	1		1	2	1	4	4	7	2	1	35	2	60
Larceny/Theft			1	2					2		3		8
Burglary			2					1				1	4
Aggravated Assault	1		1	1				4		3	25		35
Robbery					1						3		4
Rape											1		1
Gen. Civil Rights											75		75
Total	5	6	10	14	4	11	10	37	12	12	193	14	516

Table 6: Bias Types by County of Occurrence

	Barns.	Berk.	Brist	Essex	Frank.	Hampden	Hampsh.	Middle.	Norfolk	Plym.	Suffolk	Worc.	Total
Anti-Black		5	4	3	2	2	4	18	2	5	66	1	112
Anti-White	1		1	2		1		2	4	1	33		45
Anti-Asian								1			11		12
Anti-Hispanic				2		2		3			14	1	22
Anti-Arab											5		5
Anti-Other Race/eth.											2		2
Anti-Semitic	3		3	2	1	2	3	7	5	3	21	4	54
Anti-Catholic								1				3	4
Anti-Islamic			1			2			1		2		6
Anti-Gay (male)		1		3	1	2	2	4		3	43	3	62
Anti-Lesbian	1	1		1			1				8	1	13
Anti-Other Sexual											1		1
Anti-Physical Handicap			1	1							2	1	5
Total	5	7	10	14	4	11	10	36	12	12	208	14	343

Table 7: Crimes by Primary Perpetrator's Race						
	Black	White	Asian	Hispanic	Other race/eth.	Total
Vandalism	1	7	1	1		10
Harassment	23	53	5	4	1	86
Disorderly conduct	2					2
Trespass	4	2				6
Threats	14	40		1	1	56
Damage to Property	5	11	1			17
Weapons Offense	3	4				7
Simple Assault	13	33	1			47
Larceny/Theft		2				2
Burglary		3				3
Aggravated Assault	8	18	1	1		28
Robbery	1					1
Gen. Civil Rights	14	36	2	2		54
Total	44	120	7	4	1	319

Table 8: Bias Types by Primary Perpetrator's Race						
	Black	White	Asian	Hispanic	Other race/eth.	Total
Anti-Black	1	60	4		1	66
Anti-White	25	10	2	2		39
Anti-Asian	4	5				9
Anti-Hispanic		13				13
Anti-Arab	2	1				3
Anti-Other Race/Eth.	2					2
Anti-Semitic		6	1			7
Anti-Catholic		1				1
Anti-Islamic	2	1		1		4
Anti-Gay (male)	10	28		2		40
Anti-Lesbian	1	5				6
Total	47	130	7	5	1	190

Table 9: Age of Victim		
	Frequency	Percent
10 and Under	1	0.4%
11 thru 15	10	3.7%
16 thru 20	28	10.4%
21 thru 25	38	14.2%
26 thru 30	30	11.2%
31 thru 35	22	8.2%
36 thru 40	36	13.4%
41 thru 45	31	11.6%
46 thru 50	30	11.2%
51 thru 55	22	8.2%
56 thru 60	12	4.5%
60 and Up	8	3.0%
Total	268	100.0%

Table 10: Age of Perpetrator		
	Frequency	Percent
11 thru 15	13	7.4%
16 thru 20	35	19.9%
21 thru 25	28	15.9%
26 thru 30	18	10.2%
31 thru 35	15	8.5%
36 thru 40	12	6.8%
41 thru 45	19	10.8%
46 thru 50	12	6.8%
51 thru 55	12	6.8%
56 thru 60	4	2.3%
60 and Up	8	4.5%
Total	176	100.0%

Table 11: Target of Bias Crime		
	Frequency	Percent
Person	257	77.4%
Private property	26	7.8%
Public property	2	0.6%
Religious Facility	5	1.5%
Other	42	12.6%
Total	332	100.0%

Table 12: Location of Bias Crime		
	Frequency	Percent
Air/bus/train term	1	0.3%
Bank/savings and loan	2	0.6%
Bar/nightclub	7	2.2%
Church/synagogue/temple	10	3.1%
Commercial/office building	8	2.5%
Convenience store	4	1.2%
Department/discount store	3	0.9%
drug store/doctor's office/hospital	3	0.9%
Field/woods	6	1.9%
Government/public building	5	1.5%
Grocery/supermarket	3	0.9%
Highway/road/alley	96	29.6%
Hotel/motel/etc.	2	0.6%
Liquor store	1	0.3%
Parking lot/garage	13	4.0%
Residence/home	95	29.3%
Restaurant	12	3.7%
School/college	40	12.3%
Service/gas station	2	0.6%
Specialty store	5	1.5%
Other/unknown	6	1.9%
Total	324	100.0%

Table 13: Weapon Used During Incident		
	Frequency	Percent
Gun	2	0.7%
Knife/cutting	5	1.8%
Sticks/clubs	4	1.4%
Rocks/bricks	2	0.7%
Hands/feet/fists	63	22.3%
Other	38	13.5%
None	186	59.6%
Total	282	100.0%

Table 14: Race of Victims		
	Victim's Race	% of Total
White	189	57.1%
Black	116	35.0%
Asian	12	3.6%
Hispanic	11	3.3%
Other race/eth.	3	0.9%
Total	331	100.0%

Table 15: Victim's Sex		
	Victim's Sex	% of Total
Male	212	62.0%
Female	128	37.4%
Unknown	2	0.6%
Total	342	100.0%

Table 16: Race of Offenders		
	Offender's Race	% of Total
Black	64	24.7%
White	170	65.6%
Asian	14	5.4%
Hispanic	10	3.9%
Other race/eth.	1	0.4%
Total	259	100.0%

Table 17: Offender's Sex

	Offender's Sex	% of Total
Male	217	78.9%
Female	58	21.1%
Total	275	100.0%

Table 18 : Injury Types		
	Injury During Crime	% of Total
None visible	210	83.50
Other minor	25	10.04
Severe lacerations	9	3.61
Apparent broken bones	4	1.61
Poss. internal injuries	2	0.80
Other major injuries	2	0.80
Total	249	100.00

Agencies Reporting Hate Crimes

Agency	Population	# of Reported Biases
Acton	20,331	4
Andover	31,247	1
Arlington	42,389	2
Ayer	7,287	1
Barnstable	47,821	2
Belmont	24,194	1
Beverly	39,862	3
Boston	589,141	174
Boxboro	4,868	1
Braintree	33,828	1
Brockton	94,304	4
Brookline	57,107	4
Cambridge	101,355	3
Chatham	6,625	1
Chicopee	54,653	2
Concord	16,993	1
Danvers	25,212	1
Douglas	7,045	1
East Longmeadow	14,100	1
Everett	38,037	3
Fall River	91,938	1
Falmouth	32,660	1
Fitchburg	39,102	2
Framingham	66,910	2
Grafton	14,894	1
Greenfield	18,168	1
Halifax	7,500	1
Hanson	9,495	1
Haverhill	58,969	6
Hull	11,050	1
Malden	56,340	4
Mansfield	22,414	2
Marshfield	24,324	2
Mashpee	12,946	1
Medford	55,765	1
Melrose	27,134	1
Middleboro	19,941	1
Milford	26,799	1
Monson	8,359	1
Montague	8,489	1
Natick	32,170	1
New Bedford	93,768	2
Newton	83,829	3
North Adams	14,681	1
North Andover	27,202	1
North Attleboro	27,143	2
North Reading	13,837	1
Northampton	28,978	5

Agency	Population	# of Reported Biases
Pepperell	11,142	1
Plainville	7,683	2
Plymouth	51,701	1
Quincy	88,025	2
Randolph	30,963	1
Raynham	11,739	1
Reading	23,708	2
Revere	47,283	12
Savoy	705	1
Sharon	17,408	1
Shelburne	2,058	1
Somerville	77,478	1
Southborough	8,781	3
Southbridge	17,214	1
Spencer	11,691	1
Springfield	152,082	2
Stoneham	22,219	1
Stoughton	27,149	1
Sunderland	3,777	1
Sutton	8,250	1
Swampscott	14,412	1
Taunton	55,976	1
Upton	5,642	1
Uxbridge	11,156	1
Ware	9,707	1
West Boylston	7,481	1
West Bridgewater	6,634	1
West Springfield	27,899	2
Westfield	40,072	1
Westford	20,754	1
Westport	14,183	1
Wilbraham	13,473	1
MBTA-Suffolk		1
Boston College		1
Brandeis University		1
Emerson College		2
MA College Liberal Arts		4
Mt. Holyoke College		2
Northeastern University		6
Salem SC		1
U-Mass Amherst		2
U-Mass Boston		2
Westfield SC		1
Statewide Total	3,039,649	332

Agencies Reporting Zero Hate Crimes

Agency	Population
Abington	14,605
Acushnet	10,161
Adams	8,809
Agawam	28,144
Amesbury	16,450
Amherst	34,874
Aquinnah	344
Ashburnham	5,546
Ashby	2,845
Ashfield	1,800
Ashland	14,674
Athol	11,299
Attleboro	42,068
Auburn	15,901
Avon	4,443
Barre	5,113
Becket	1,755
Bedford	12,595
Belchertown	12,968
Bellingham	15,314
Berkley	5,749
Berlin	2,380
Bernardston	2,155
Billerica	38,981
Blackstone	8,804
Bolton	4,148
Bourne	18,721
Boxford	7,921
Boylston	4,008
Brewster	10,094
Bridgewater	25,185
Brimfield	3,339
Buckland	1,991
Burlington	22,876
Canton	20,775
Carlisle	4,717
Carver	11,163
Charlemont	1,358
Charlton	11,263
Chelmsford	33,858
Chelsea	35,080
Cheshire	3,401
Chesterfield	1,201
Chilmark	843
Clinton	13,435
Cohasset	7,261
Dalton	6,892
Dartmouth	30,666
Dedham	23,464

Agency	Population
Deerfield	4,750
Dennis	15,973
Dover	5,558
Dracut	28,562
Dudley	10,036
Duxbury	14,248
East Bridgewater	12,974
East Brookfield	2,097
Eastham	5,453
Easthampton	15,994
Easton	22,299
Edgartown	3,779
Egremont	1,345
Erving	1,467
Fairhaven	16,159
Foxborough	16,246
Franklin	29,560
Freetown	8,472
Gardner	20,770
Georgetown	7,377
Gill	1,363
Gloucester	30,273
Goshen	921
Gosnold	86
Granby	6,132
Granville	1,521
Great Barrington	7,527
Groton	9,547
Groveland	6,038
Hadley	4,793
Hamilton	8,315
Hampden	5,171
Hanover	13,164
Hardwick	2,622
Harvard	5,981
Harwich	12,386
Hatfield	3,249
Hingham	19,882
Hinsdale	1,872
Holden	15,621
Holliston	13,801
Holyoke	39,838
Hopedale	5,907
Hopkinton	13,346
Hubbardston	3,909
Hudson	18,113
Ipswich	12,987
Kingston	11,780
Lakeville	9,821

Agency	Population
Lancaster	7,380
Lanesborough	2,990
Lawrence	72,043
Lee	5,985
Leicester	10,471
Lenox	5,077
Leominster	41,303
Leverett	1,663
Lexington	30,355
Lincoln	8,056
Littleton	8,184
Longmeadow	15,633
Lowell	105,167
Ludlow	21,209
Lunenburg	9,401
Lynn	89,050
Lynnfield	11,542
Manchester-by-the-sea	5,228
Marblehead	20,377
Marion	5,123
Marlborough	36,255
Mattapoisett	6,268
Maynard	10,433
Medfield	12,273
Medway	12,448
Mendon	5,286
Merrimac	6,138
Methuen	43,789
Middleton	7,744
Millbury	12,784
Millis	7,902
Millville	2,724
Milton	26,062
Monterey	934
Nahant	3,632
Nantucket	9,520
Needham	28,911
New Salem	929
Newbury	6,717
Newburyport	17,189
Norfolk	10,460
North Brookfield	4,683
Northboro	14,013
Northbridge	13,182
Northfield	2,951
Norton	18,036
Norwell	9,765
Norwood	28,587
Oak Bluffs	3,713
Oakham	1,673
Orange	7,518

Agency	Population
Orleans	6,341
Oxford	13,352
Palmer	12,497
Paxton	4,386
Peabody	48,129
Pembroke	16,927
Pittsfield	45,793
Plympton	2,637
Princeton	3,353
Provincetown	3,431
Rehoboth	10,172
Rochester	4,581
Rockland	17,670
Rockport	7,767
Rowley	5,500
Royalston	1,254
Rutland	6,353
Salem	40,407
Salisbury	7,827
Sandwich	20,136
Saugus	26,078
Scituate	17,863
Seekonk	13,425
Sheffield	3,335
Sherborn	4,200
Shirley	6,373
Shrewsbury	31,640
Somerset	18,234
South Hadley	17,196
Southampton	5,387
Southwick	8,835
Sterling	7,257
Stockbridge	2,276
Stow	5,902
Sturbridge	7,837
Sudbury	16,841
Swansea	15,901
Templeton	6,799
Tewksbury	28,851
Tisbury	3,755
Topsfield	6,141
Townsend	9,198
Truro	2,087
Tyngsboro	11,081
Wakefield	24,804
Wales	1,737
Walpole	22,824
Waltham	59,226
Warren	4,776
Watertown	32,986
Wayland	13,100

Agency	Population
Webster	16,415
Wellesley	26,613
Wellfleet	2,749
Wenham	4,440
West Brookfield	3,804
West Newbury	4,149
West Tisbury	2,467
Westborough	17,997
Westhampton	1,468
Westminster	6,907
Weston	11,469
Westwood	14,117
Weymouth	53,988
Whately	1,573
Williamsburg	2,427
Williamstown	8,424
Wilmington	21,363
Winchendon	9,611
Winchester	20,810
Winthrop	18,303
Woburn	37,258
Worcester	172,648
Wrentham	10,554
Yarmouth	24,807
SP Barnstable-Middleboro	
SP Berkshire-Northampton	
SP Berkshire-Weston	
SP Bristol-Framingham	
SP Bristol-Middleboro	
SP Dukes-Middleboro	
SP Essex-Danvers	
SP Franklin-Holden	
SP Franklin-Northampton	
SP Hampden-Northampton	
SP Hampden-Weston	
SP Hampshire-Northampton	
SP Middlesex-Framingham	
SP Middlesex-Holden	
SP Middlesex-Weston	
SP Norfolk-Framingham	
SP Norfolk-Middleboro	
SP Plymouth-Middleboro	
SP Suffolk-Framingham	
SP Suffolk-Weston	
SP Worcester-Holden	
SP Worcester-Weston	
Environmental Police	
MBTA-Bristol	
MBTA-Essex	
MBTA-Middlesex	
MBTA-Norfolk	

Agency	Population
MBTA-Plymouth	
MBTA-Worcester	
Assumption College	
Bentley College	
Boston University	
Bridgewater SC	
Bristol CC	
Clark University	
Fitchburg SC	
Harvard University	
Holyoke CC	
Lasell College	
Mass College of Art	
Merrimack College	
MIT	
North Shore CC	
Smith College	
Tufts U Worcester	
Tufts U Suffolk	
Tufts University	
U-Mass Dartmouth	
Wellesley College	
Western NE College	
Worcester Polytechnic In	
Beth Israel Deaconess	
Total Population	3,208,097

Non-reporting Agencies

Agency	Population
Alford	399
Blandford	1,214
Brookfield	3,051
Chester	1,308
Clarksburg	1,686
Colrain	1,813
Conway	1,809
Cummington	978
Dighton	6,175
Dunstable	2,829
Essex	3,267
Florida	676
Hancock	721
Hawley	336
Heath	805
Holbrook	10,785
Holland	2,407
Huntington	2,174
Leyden	772
Middlefield	542
Monroe	93
Montgomery	654
Mount Washington	130
New Ashford	247
New Braintree	927
New Marlboro	1,494
Otis	1,365
Pelham	1,403
Peru	821
Petersham	1,180
Phillipston	1,621
Plainfield	589
Richmond	1,604
Rowe	351
Russell	1,657
Sandisfield	824
Shutesbury	1,810
Tolland	426
Tyringham	350
Wareham	20,335
Warwick	750
Washington	544
Wendell	986
West Stockbridge	1,416
Whitman	13,882
Windsor	875
Worthington	1,270
Springfield College	0
SP Suffolk-Logan Airport	0

Agency	Population
Amherst College	0
U-Mass Lowell	0
Framingham SC	0
Babson College	0
Dean College	0
Massasoit CC	0
Suffolk University	0
Fisher College	0
Wentworth Institute	0
Quinsigamond CC	0
U-Mass Worcester	0
Total Population	101,351