

**Fish Mercury Long Term Monitoring
2009 Annual Data Report**

Massachusetts Department of Environmental Protection
Office of Research and Standards
Boston, MA

July 2011

TABLE OF CONTENTS

INTRODUCTION	<u>Page #</u> 1
DATA	1
REFERENCES	9
APPENDIX - Raw Tissue Mercury Concentration Data	10

LIST OF FIGURES

Figure 1. Annual Trends in Mean Size- Standardized Fish Tissue Mercury Concentrations 1999-2009, Northeast Lakes	4
Figure 2. Trends in Mean Size-Standardized Fish Tissue Mercury 1999-2009, Central Lakes	5
Figure 3. Annual Trends in Mean Size-Standardized Fish Tissue Mercury Concentrations 1994-2009	6

LIST OF TABLES

Table 1. 2009 Fish Mercury Concentration (mg Hg/kg wet wt) Means and Standard Deviations	3
Table 2. 2009 Lake Water Chemistry, all units in mg/L	8
Table 3. 2009 Water Physical Characteristics at Fish Sampling	9

INTRODUCTION

This Report presents data collected as part of the Massachusetts Department of Environmental Protection's Fish Mercury Long Term Monitoring Research Program. An overview of the research program and the methods used for data collection, analysis and study design are presented in a separate Methods Report (MassDEP, 2010).

The lakes sampled in the program and attributes of the lakes, including their geographic location, are in the Methods Report. The sampling schedule and number of fish collected at each sampling event may also be found in the Methods Report.

Annual fish mercury data reports will be posted on Mass DEP's website. Annual data will also be periodically integrated into the fish mercury research database accessed through the data portal on the MassDEP website (<http://public.dep.state.ma.us/fish/>). This integrated database contains fish tissue mercury data and associated physico-chemical data for water and sediments of the lakes which are sampled. The Annual Data Reports do not include an interpretation of the fish mercury testing results. The purpose of the reports is to document the results of fish mercury testing. Interpretation of the data will be provided in future reports. The data collected in 2009 are presented below.

DATA

The lakes sampled in 2009 and statistical summaries of the edible fish tissue mercury concentrations are presented in Table 1. No largemouth bass were collected in Bog Pond. Only two largemouth bass were collected in Upper Reservoir. No yellow perch were collected in Somerset Reservoir or Lake Pentucket.

Lake water quality characteristics at the time of sampling are shown in Tables 2 and 3. Lakes were usually vertically uniform in terms of their density as indicated by temperature and dissolved oxygen profiles at the time of sampling; therefore single samples for nutrient and ionic analyses were taken to represent the water column characteristics (Table 2). Data from depth profiles for temperature, pH, conductivity and dissolved oxygen concentration were averaged over depth, and the means are reported in Table 3.

Table 1. 2009 Fish Mercury Concentration (mg Hg/kg wet wt) Means and Standard Deviations

Lake	LMB					YP				
	\bar{x}	s	n	min	max	\bar{x}	s	n	min	max
Ashfield Pond	0.55	0.38	15	0.12	1.30	0.19	0.09	30	0.07	0.43
Bare Hill Pond	0.51	0.25	15	0.21	1.10	0.21	0.07	30	0.10	0.39
Bog Pond			0			0.19	0.07	21	0.10	0.40
Haggetts Pond	0.47	0.40	15	0.12	1.40	0.20	0.09	30	0.11	0.53
Johnsons Pond	0.43	0.19	10	0.23	0.81	0.15	0.07	14	0.07	0.28
Lake Lashaway	0.35	0.20	14	0.19	0.79	0.20	0.06	30	0.10	0.38
Lake Nippenicket	0.97	0.40	15	0.41	1.80	0.43	0.14	30	0.20	0.77
Lake Pentucket	0.24	0.09	4	0.16	0.34			0		
Laurel Lake	0.34	0.14	15	0.12	0.58	0.13	0.05	19	0.09	0.26
Long Pond, Dracut	0.28	0.24	15	0.10	0.96	0.07	0.03	30	0.03	0.15
Massapoag, Dunstable	0.58	0.30	15	0.27	1.30	0.36	0.14	30	0.15	0.64
Massapoag, Sharon	0.50	0.28	15	0.13	0.89	0.10	0.05	24	0.04	0.27
Millvale Reservoir	0.54	0.24	15	0.30	1.20	0.32	0.20	6	0.08	0.55
Newfield Pond	0.39	0.25	15	0.17	1.10	0.18	0.08	30	0.09	0.44
North Watuppa Pond	1.06	0.32	15	0.22	1.40	0.43	0.23	30	0.16	1.10
Pomps Pond	0.35	0.18	15	0.17	0.85	0.15	0.08	18	0.05	0.37
Quabbin Reservoir	0.39	0.17	13	0.18	0.74	0.21	0.06	26	0.14	0.36
Rock Pond	0.73	0.28	15	0.48	1.40	0.34	0.15	30	0.10	0.60
Somerset Reservoir	1.00	0.53	15	0.31	1.70			0		
Stevens Pond	0.26	0.11	15	0.15	0.47	0.10	0.04	3	0.06	0.14
Upper Naukeag	0.75	0.36	7	0.47	1.50	0.64	0.15	30	0.28	0.95
Upper Reservoir	0.51	0.10	2	0.44	0.58	0.39	0.15	30	0.17	0.80
Wickaboag Pond	0.49	0.26	14	0.17	1.10	30	0.11	0.05	0.04	0.25

KEY: \bar{x} = mean ; s = standard deviation; n = sample size; min = minimum; max = maximum
 LMB = largemouth bass, *Micropterus salmoides*; YP = yellow perch, *Perca flavescens*

In order to provide perspective on the current year's sampling results in relation to previous sampling performed in the same lakes, time series plots of mean size-standardized mercury concentrations for each species are presented in Figures 1, 2 and 3. Figure 1 presents lakes sampled in the northeast region of Massachusetts beginning in 1999. Figure 2 presents lakes sampled in the central region of the state, where sampling began in some lakes in 1999, others in 2003, and in 2005 in the Quabbin Reservoir.

Figure 1. Trends in Mean Size-Standardized Fish Tissue Mercury 1999-2009
Northeast Lakes

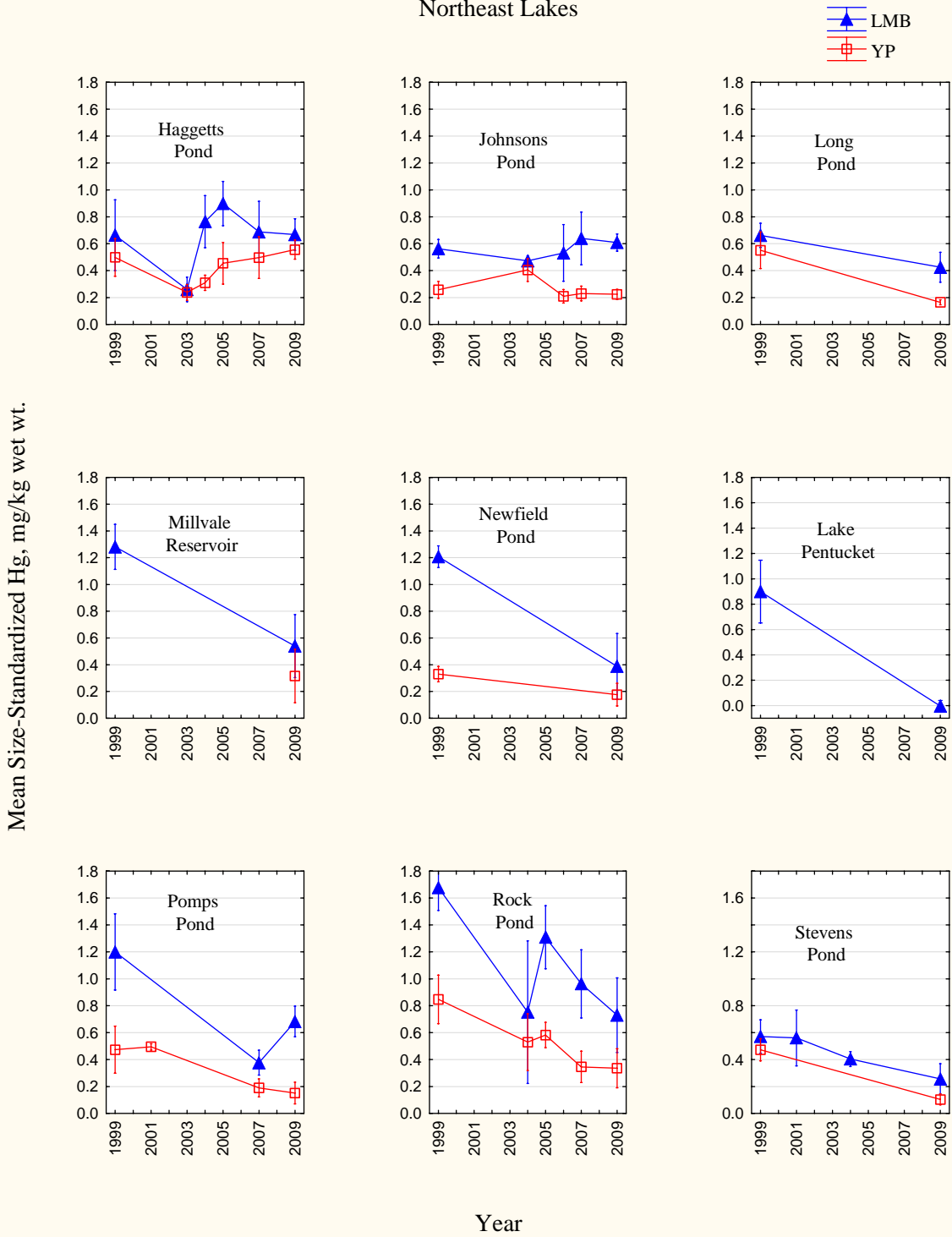


Figure 2. Trends in Mean Size-Standardized Fish Tissue Mercury 1999-2009

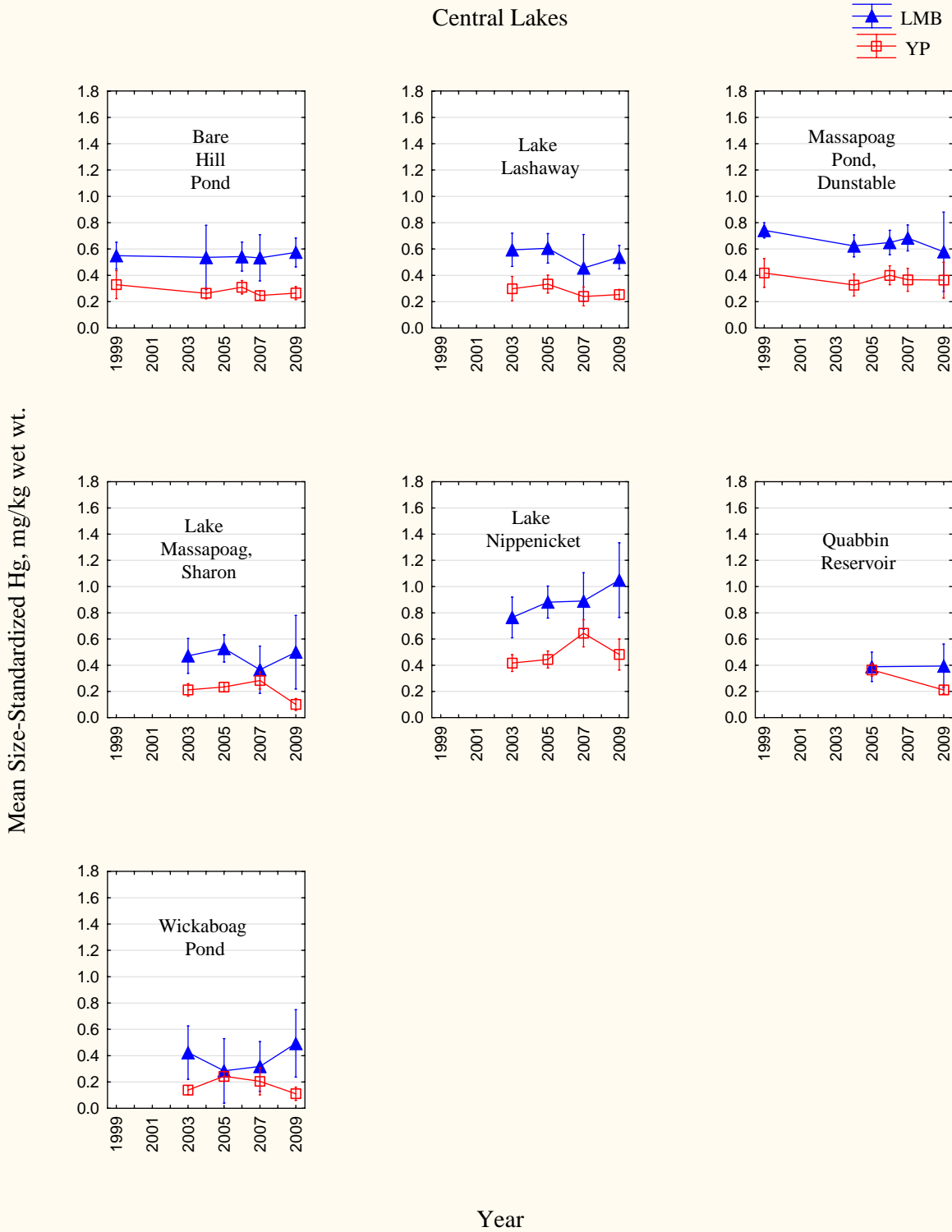


Figure 3. Annual Species Trends in Mean Size-Standardized Fish Tissue Mercury 1994-2009

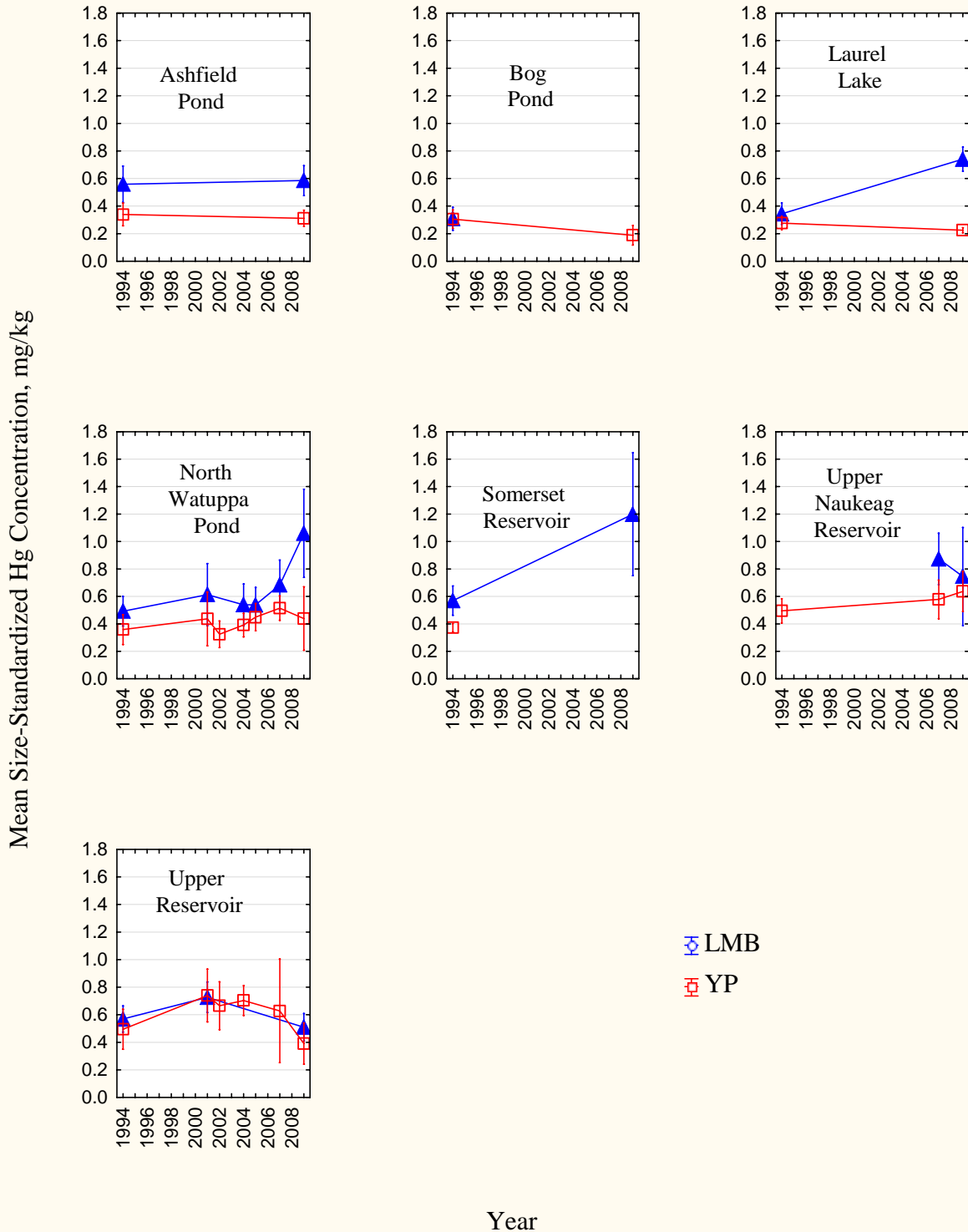


Figure 3 depicts seven lakes where sampling first occurred in 1994. The 1994 fish samples were collected in the fall, whereas all of the other year's samples were collected in the spring. Fish tissue mercury concentrations vary seasonally, with lowest concentrations generally occurring in the summer and fall. Concentrations the rest of the year can range from 13-176% higher (MassDEP 2006). Therefore, caution must be exercised when interpreting trends when the data include samples collected in different seasons. The 1994 results are likely biased low relative to what the concentrations would have been in the spring of that same year.

Table 2. 2009 Lake Water Chemistry, all units in mg/L

Lake	TP	NO ₃ -N+NO ₂ -N	NH ₃	Ca	Na	K	Mg	Fe	Mn	DOC	Cl	SO ₄
Ashfield Pond	0.013	<0.01	0.06	17	1.8	1.9	1.2	0.28	0.10	3.2	48	4.5
Bare Hill Pond	0.014	0.02	0.03	6.4	2.2	1.5	1.5	0.35	<0.003	4.4	33	6.9
Bog Pond	0.013	<0.01	0.04	2.4	0.31	1.1	0.33	0.42	0.016	6.5	3	2.6
Haggetts Pond	0.012	0.18	<0.02	12	6.3	3.0	2.9	0.11	<0.003	7.7	100	9.6
Johnsons Pond	0.019	0.02	<0.02	11	1.3	2.1	2.6	0.15	0.046	7.2	22	5.7
Lake Lashaway	0.018	<0.01	0.03	4.3	0.83	1.7	1.2	0.42	<0.003	3.6	12	6.8
Lake Nippenicket	0.026	0.07	<0.02	5.8	4.0	1.8	1.8	1.1	0.039	12	72	7.7
Lake Pentucket	0.01	<0.01	0.02	11	1.7	2.4	2.6	0.036	<0.003	4.5	52	6.5
Laurel Lake	0.006	<0.01	<0.02	1.2	0.36	1.1	0.32	0.036	<0.003	2.4	2	3.9
Long Pond, Dracut	0.017	<0.01	0.02	11	2.6	3.6	2.0	0.11	0.11	4	74	11
Massapoag, Dunstable	0.013	0.23	<0.02	5.2	1.6	1.8	1.4	0.41	0.019	5.3	24	6.3
Massapoag, Sharon	0.034	0.04	0.03	13	2.4	2.1	2.6	0.74	0.035	7.7	61	5.5
Millvale Reservoir	0.016	0.21	0.02	16	3.9	3.9	2.9	0.24	0.11	5.3	110	11
Newfield Pond	0.013	<0.01	<0.02	3.0	1.2	1.1	0.92	0.041	<0.003	5	18	5.6
North Watuppa Pond	0.026	<0.01	0.02	13	3.8	2.2	3.0	0.29	<0.003	4.6	74	5.8
Pomps Pond	<0.005	<0.01	<0.02	0.2	<0.20	<0.03	0.56	<0.01	<0.003	1.8	<1.0	<0.50
Quabbin Reservoir	0.023	0.26	<0.02	11	2.7	2.1	2.6	0.31	0.01	5.9	43	11
Rock Pond	0.017	<0.01	0.02	5.6	0.86	1.8	1.3	0.17	<0.003	7.3	18	8.9
Somerset Reservoir	0.022	<0.01	0.02	9.5	2.5	2	2.3	0.28	0.061	5.3	44	6.8
Stevens Pond	0.006	<0.01	<0.02	1.1	0.68	1.1	0.30	0.026	<0.003	4.1	9	3.8
Upper Naukeag	0.021	<0.01	<0.02	2.1	0.76	1.7	0.50	0.38	<0.003	11	12	4.0
Upper Reservoir	0.024	<0.01	<0.02	4.6	0.90	1.8	1.6	0.67	<0.003	4.2	12	8.4
Wickaboag Pond	0.013	<0.01	0.06	17	1.8	1.9	1.2	0.28	0.10	3.2	48	4.5

Ca = calcium; Cl = chloride; DOC = dissolved organic carbon; Fe = iron; K = potassium; Mg = magnesium; Mn = manganese; N a= sodium; NH₃ = Ammonia; NO₂⁻N = nitrite; NO₃⁻N = nitrate; SO₄ = sulfate; TP = total phosphorus

Table 3. 2009 Water Physical Characteristics at Fish Sampling

Lake	Date	T	DO	pH	SC
Ashfield Pond	06/24/09	17.4	5.2	8.4	
Bare Hill Pond	05/06/09	13.0	7.9	6.8	156
Bog Pond	06/24/09	16.6	6.1	7.8	27
Haggetts Pond	05/19/09	17.1	8.6	7.3	394
Johnsons Pond	07/06/09	17.9	4.0	7.7	140
Lake Lashaway	06/10/09	18.8	6.0	6.9	80
Lake Nippenicket	05/11/09	16.8	8.9	6.6	251
Lake Pentucket	06/16/09	18.1	7.1	8.6	204
Laurel Lake	06/25/09	18.4	8.1	6.7	
Long Pond, Dracut	06/23/08	18.6	5.5	6.7	317
Massapoag, Dunstable	05/14/09	11.1	7.2	6.9	215
Massapoag, Sharon	05/14/09	13.9	8.7	7.1	122
Millvale Reservoir	06/17/09	18.2	6.6	7.1	283
Newfield Pond	05/17/09	14.2	7.8	7.0	439
North Watuppa Pond	06/11/09	19.1	8.2	6.9	89
Pomps Pond	06/25/09	19.8	5.5	7.4	307
Quabbin Reservoir					
Rock Pond	05/04/09	13.8	8.1	7.1	216
Somerset Reservoir	07/08/09	16.8	6.0	7.1	108
Stevens Pond	06/24/09	18.7	7.5	7.6	212
Upper Naukeag	05/12/09	11.5	9.7	5.6	47
Upper Reservoir	05/11/09	15.2	8.3	5.2	60
Wickaboag Pond	06/09/09	20.1	6.8	7.1	86

T = mean temperature of the water column in degrees Celsius.

DO = mean dissolved oxygen in mg/L.

SC = mean conductivity in microsiemens per centimeter.

REFERENCES

MassDEP. 2006. Massachusetts Fish Tissue Mercury Studies: Investigations of Seasonal and Other Sources of Variation. Final Report. Office of Research and Standards and Wall Experiment Station, Massachusetts Department of Environmental Protection. Boston, MA (available at: <http://www.mass.gov/dep/toxics/stypes/ffhgseas.pdf>)

MassDEP. 2010. Fish Mercury Long Term Monitoring Annual Data Report – Methods. Report from Massachusetts Department of Environmental Protection, Office of Research and Standards. Boston, MA (available at: http://www.mass.gov/dep/toxics/stypes/hgmethods_ar.pdf)

APPENDIX

Raw Tissue Mercury Concentration Data

TABLE A-1. Individual fish tissue mercury concentrations, fish length, weight, reproductive stage, and sex from the lakes sampled in 2009

Key: SP = Species; L = total length in mm; WT = Weight in g wet; S = Sex; STG = Reproductive Stage; HG = mercury concentration in mg Total Hg/kg wet weight.

SAMPLE #	LAKE	SP	L	WT	S	STG	HG
2009171-004	Ashfield Pond	LMB	375	828	Spent	M	0.46
2009171-005	Ashfield Pond	YP	166	51	Resting	M	0.13
2009171-006	Ashfield Pond	YP	122	23	Immature	F	0.10
2009171-007	Ashfield Pond	YP	122	20	Immature	F	0.07
2009171-008	Ashfield Pond	LMB	136	32	Immature	F	0.12
2009171-009	Ashfield Pond	LMB	336	526	Spent	M	0.37
2009171-010	Ashfield Pond	LMB	471	1486	Spent	M	1.20
2009171-011	Ashfield Pond	LMB	374	687	Spent	F	0.50
2009171-012	Ashfield Pond	LMB	304	376	Spent	M	0.29
2009171-013	Ashfield Pond	LMB	351	606	Spent	M	0.32
2009171-014	Ashfield Pond	LMB	320	459	Spent	F	0.29
2009171-015	Ashfield Pond	LMB	315	443	Spent	F	0.32
2009171-016	Ashfield Pond	LMB	483	1590	Partially Spent	F	1.30
2009171-017	Ashfield Pond	LMB	324	485	Spent	M	0.23
2009171-018	Ashfield Pond	LMB	425	1245	Partially Spent	F	0.62
2009171-019	Ashfield Pond	LMB	464	1368	Spent	F	1.10
2009171-020	Ashfield Pond	LMB	451	1316	Spent	M	0.84
2009171-021	Ashfield Pond	LMB	320	465	Resting	F	0.28
2009171-022	Ashfield Pond	YP	219	128	Resting	F	0.28
2009171-023	Ashfield Pond	YP	190	79	Resting	M	0.24
2009171-024	Ashfield Pond	YP	177	59	Resting	M	0.13
2009171-025	Ashfield Pond	YP	185	68	Immature	F	0.12
2009171-026	Ashfield Pond	YP	225	135	Resting	F	0.23
2009171-027	Ashfield Pond	YP	229	125	Resting	M	0.43

FISH MERCURY LONG-TERM MONITORING 2009 ANNUAL DATA REPORT

SAMPLE #	LAKE	SP	L	WT	S	STG	HG
2009171-028	Ashfield Pond	YP	174	61	Immature	F	0.12
2009171-029	Ashfield Pond	YP	194	85	Resting	F	0.33
2009171-030	Ashfield Pond	YP	259	204	Resting	F	0.33
2009171-031	Ashfield Pond	YP	183	66	Resting	M	0.24
2009171-032	Ashfield Pond	YP	227	128	Resting	F	0.26
2009171-033	Ashfield Pond	YP	173	60	Resting	F	0.12
2009171-034	Ashfield Pond	YP	182	65	Immature	F	0.17
2009171-035	Ashfield Pond	YP	209	116	Resting	F	0.14
2009171-036	Ashfield Pond	YP	195	81	Resting	M	0.15
2009171-037	Ashfield Pond	YP	167	55	Resting	F	0.10
2009171-038	Ashfield Pond	YP	211	106	Resting	M	0.18
2009171-039	Ashfield Pond	YP	185	73	Resting	M	0.27
2009171-040	Ashfield Pond	YP	166	56	Resting	M	0.12
2009171-041	Ashfield Pond	YP	160	50	Immature	M	0.12
2009171-042	Ashfield Pond	YP	165	55	Resting	M	0.14
2009171-043	Ashfield Pond	YP	165	47	Resting	M	0.17
2009171-044	Ashfield Pond	YP	193	73	Resting	F	0.28
2009171-045	Ashfield Pond	YP	186	71	Resting	F	0.21
2009171-046	Ashfield Pond	YP	185	78	Resting	M	0.18
2009171-047	Ashfield Pond	YP	185	74	Resting	F	0.12
2009171-048	Ashfield Pond	YP	170	58	Resting	M	0.09
2009128-004	Bare Hill Pond	YP	173	55	Spent	M	0.25
2009128-005	Bare Hill Pond	YP	241	148	Spent	F	0.24
2009128-006	Bare Hill Pond	YP	185	70	Spent	M	0.13
2009128-007	Bare Hill Pond	YP	186	68	Immature	F	0.11
2009128-008	Bare Hill Pond	YP	190	82	Spent	F	0.20
2009128-009	Bare Hill Pond	YP	206	90	Spent	F	0.14
2009128-010	Bare Hill Pond	YP	182	60	Immature	F	0.15

FISH MERCURY LONG-TERM MONITORING 2009 ANNUAL DATA REPORT

SAMPLE #	LAKE	SP	L	WT	S	STG	HG
2009128-011	Bare Hill Pond	YP	228	140	Spent	F	0.25
2009128-012	Bare Hill Pond	YP	184	70	Immature	F	0.16
2009128-013	Bare Hill Pond	YP	255	165	Spent	F	0.27
2009128-014	Bare Hill Pond	YP	251	200	Spent	F	0.19
2009128-015	Bare Hill Pond	YP	177	60	Immature	F	0.23
2009128-016	Bare Hill Pond	YP	182	78	Spent	M	0.17
2009128-017	Bare Hill Pond	YP	285	260	Spent	F	0.32
2009128-018	Bare Hill Pond	YP	292	320	Spent	F	0.39
2009128-019	Bare Hill Pond	YP	193	180	Spent	F	0.17
2009128-020	Bare Hill Pond	YP	188	75	Spent	F	0.15
2009128-021	Bare Hill Pond	YP	223	140	Spent	F	0.17
2009128-022	Bare Hill Pond	YP	174	58	Immature	F	0.10
2009128-023	Bare Hill Pond	YP	221	113	Spent	F	0.28
2009128-024	Bare Hill Pond	YP	275	240	Spent	F	0.34
2009128-025	Bare Hill Pond	YP	228	115	Spent	F	0.31
2009128-026	Bare Hill Pond	YP	245	170	Spent	F	0.23
2009128-027	Bare Hill Pond	YP	190	70	Immature	F	0.19
2009128-028	Bare Hill Pond	YP	186	65	Immature	F	0.22
2009128-029	Bare Hill Pond	YP	163	48	Spent	M	0.16
2009128-030	Bare Hill Pond	YP	213	95	Spent	F	0.33
2009128-031	Bare Hill Pond	YP	170	50	Spent	M	0.19
2009128-032	Bare Hill Pond	YP	158	42	Spent	F	0.12
2009128-033	Bare Hill Pond	YP	160	47	Immature	F	0.16
2009128-034	Bare Hill Pond	LMB	427	985	Developing	M	0.93
2009128-035	Bare Hill Pond	LMB	476	1640	Developing	M	1.10
2009128-036	Bare Hill Pond	LMB	371	785	Developing	F	0.45
2009128-037	Bare Hill Pond	LMB	402	920	Developing	F	0.39
2009128-038	Bare Hill Pond	LMB	430	1200	Developing	M	0.69

FISH MERCURY LONG-TERM MONITORING 2009 ANNUAL DATA REPORT

SAMPLE #	LAKE	SP	L	WT	S	STG	HG
2009128-039	Bare Hill Pond	LMB	320	420	Developing	M	0.32
2009128-040	Bare Hill Pond	LMB	320	490	Developing	F	0.31
2009128-041	Bare Hill Pond	LMB	351	650	Ripe	F	0.44
2009128-042	Bare Hill Pond	LMB	376	710	Developing	M	0.48
2009128-043	Bare Hill Pond	LMB	351	540	Developing	M	0.40
2009128-044	Bare Hill Pond	LMB	372	675	Developing	M	0.47
2009128-045	Bare Hill Pond	LMB	186	90	Immature	M	0.21
2009128-046	Bare Hill Pond	LMB	345	540	Developing	M	0.31
2009128-047	Bare Hill Pond	LMB	418	980	Developing	F	0.72
2009128-048	Bare Hill Pond	LMB	331	540	Developing	M	0.39
2009172-004	Bog Pond	YP	129	22	Immature	F	0.13
2009172-005	Bog Pond	YP	132	24	Immature	F	0.10
2009172-006	Bog Pond	YP	138	28	Immature	F	0.15
2009172-007	Bog Pond	YP	136	25	Immature	F	0.21
2009172-008	Bog Pond	YP	147	32	Immature	F	0.18
2009172-009	Bog Pond	YP	145	30	Immature	F	0.24
2009172-010	Bog Pond	YP	150	33	Immature	F	0.23
2009172-011	Bog Pond	YP	178	57	Resting	F	0.32
2009172-012	Bog Pond	YP	171	54	Resting	F	0.24
2009172-013	Bog Pond	YP	142	30	Immature	F	0.16
2009172-014	Bog Pond	YP	140	29	Immature	F	0.14
2009172-015	Bog Pond	YP	134	26	Immature	M	0.19
2009172-016	Bog Pond	YP	124	20	Immature	M	0.14
2009172-017	Bog Pond	YP	154	39	Resting	M	0.14
2009172-018	Bog Pond	YP	136	28	Resting	M	0.40
2009172-019	Bog Pond	YP	134	24	Immature	M	0.12
2009172-020	Bog Pond	YP	140	21	Immature	M	0.19
2009172-021	Bog Pond	YP	139	28	Immature	F	0.14

FISH MERCURY LONG-TERM MONITORING 2009 ANNUAL DATA REPORT

SAMPLE #	LAKE	SP	L	WT	S	STG	HG
2009172-022	Bog Pond	YP	134	25	Resting	M	0.19
2009172-023	Bog Pond	YP	148	34	Immature	F	0.20
2009172-024	Bog Pond	YP	162	43	Resting	F	0.14
2009121-004	Haggetts Pond	LMB	207	110	Immature	F	0.12
2009121-005	Haggetts Pond	LMB	252	192	Immature	F	0.22
2009121-006	Haggetts Pond	LMB	202	118	Developing	M	0.15
2009121-007	Haggetts Pond	LMB	209	114	Developing	M	0.16
2009121-008	Haggetts Pond	LMB	277	268	Developing	F	0.26
2009121-009	Haggetts Pond	LMB	252	179	Developing	M	0.20
2009121-010	Haggetts Pond	LMB	295	358	Developing	F	0.33
2009121-011	Haggetts Pond	LMB	265	242	Developing	M	0.31
2009121-012	Haggetts Pond	LMB	447	1334	Developing	M	0.80
2009121-013	Haggetts Pond	LMB	469	1522	Developing	M	1.40
2009121-014	Haggetts Pond	LMB	425	1145	Developing	F	0.76
2009121-015	Haggetts Pond	LMB	466	1620	Developing	F	1.20
2009121-016	Haggetts Pond	LMB	428	1131	Developing	F	0.57
2009121-017	Haggetts Pond	LMB	285	305	Immature	F	0.37
2009121-018	Haggetts Pond	LMB	229	152	Developing	M	0.18
2009121-019	Haggetts Pond	YP	185	71	Resting	F	0.43
2009121-020	Haggetts Pond	YP	185	68	Resting	F	0.53
2009121-021	Haggetts Pond	YP	186	75	Resting	F	0.29
2009121-022	Haggetts Pond	YP	164	43	Resting	F	0.15
2009121-023	Haggetts Pond	YP	168	49	Resting	F	0.24
2009121-024	Haggetts Pond	YP	159	40	Resting	F	0.18
2009121-025	Haggetts Pond	YP	160	42	Resting	M	0.17
2009121-026	Haggetts Pond	YP	145	31	Resting	M	0.12
2009121-027	Haggetts Pond	YP	148	31	Resting	F	0.20
2009121-028	Haggetts Pond	YP	147	29	Immature	F	0.14

FISH MERCURY LONG-TERM MONITORING 2009 ANNUAL DATA REPORT

SAMPLE #	LAKE	SP	L	WT	S	STG	HG
2009121-029	Haggetts Pond	YP	142	29	Immature	F	0.18
2009121-030	Haggetts Pond	YP	142	31	Immature	M	0.15
2009121-031	Haggetts Pond	YP	180	59	Resting	F	0.29
2009121-032	Haggetts Pond	YP	171	51	Resting	F	0.19
2009121-033	Haggetts Pond	YP	163	45	Resting	F	0.33
2009121-034	Haggetts Pond	YP	154	40	Resting	F	0.22
2009121-035	Haggetts Pond	YP	155	37	Immature	F	0.11
2009121-036	Haggetts Pond	YP	160	53	Resting	F	0.14
2009121-037	Haggetts Pond	YP	152	35	Immature	F	0.20
2009121-038	Haggetts Pond	YP	143	30	Resting	F	0.16
2009121-039	Haggetts Pond	YP	141	29	Immature	F	0.15
2009121-040	Haggetts Pond	YP	140	27	Immature	F	0.21
2009121-041	Haggetts Pond	YP	174	51	Resting	F	0.13
2009121-042	Haggetts Pond	YP	154	35	Resting	F	0.22
2009121-043	Haggetts Pond	YP	155	35	Resting	F	0.18
2009121-044	Haggetts Pond	YP	151	32	Immature	F	0.19
2009121-045	Haggetts Pond	YP	165	40	Immature	M	0.17
2009121-046	Haggetts Pond	YP	134	29	Immature	F	0.20
2009121-047	Haggetts Pond	YP	146	33	Immature	F	0.12
2009121-048	Haggetts Pond	YP	143	31	Immature	F	0.11
2009126-004	Johnsons Pond	LMB	362	634	Spent	M	0.51
2009126-005	Johnsons Pond	LMB	390	935	Spent	M	0.47
2009126-006	Johnsons Pond	LMB	304	395	Spent	M	0.37
2009126-007	Johnsons Pond	LMB	287	284	Spent	M	0.37
2009126-008	Johnsons Pond	LMB	222	141	Spent	M	0.24
2009126-009	Johnsons Pond	YP	242	154	Resting	F	0.19
2009126-010	Johnsons Pond	YP	233	146	Resting	M	0.21
2009126-011	Johnsons Pond	YP	245	180	Resting	F	0.26

FISH MERCURY LONG-TERM MONITORING 2009 ANNUAL DATA REPORT

SAMPLE #	LAKE	SP	L	WT	S	STG	HG
2009126-012	Johnsons Pond	YP	186	78	Resting	F	0.09
2009126-013	Johnsons Pond	YP	168	60	Resting	F	0.07
2009126-014	Johnsons Pond	YP	170	61	Resting	F	0.09
2009126-015	Johnsons Pond	YP	211	109	Resting	M	0.20
2009126-016	Johnsons Pond	YP	164	53	Resting	F	0.09
2009126-017	Johnsons Pond	YP	219	136	Resting	F	0.16
2009126-018	Johnsons Pond	YP	160	56	Resting	F	0.11
2009126-019	Johnsons Pond	YP	185	78	Resting	F	0.09
2009126-020	Johnsons Pond	YP	205	110	Resting	F	0.11
2009126-021	Johnsons Pond	YP	237	154	Resting	M	0.28
2009126-022	Johnsons Pond	YP	214	122	Resting	F	0.10
2009126-023	Johnsons Pond	LMB	436	1450	Spent	M	0.81
2009126-024	Johnsons Pond	LMB	396	863	Spent	M	0.66
2009126-025	Johnsons Pond	LMB	325	494	Spent	F	0.36
2009126-026	Johnsons Pond	LMB	241	217	Spent	M	0.23
2009126-027	Johnsons Pond	LMB	245	188	Spent	M	0.28
2009124-004	Lake Lashaway	LMB	459	1400	Partially Spent	M	0.77
2009124-005	Lake Lashaway	LMB	357	710	Spent	M	0.40
2009124-006	Lake Lashaway	LMB	441	1352	Partially Spent	F	0.79
2009124-007	Lake Lashaway	LMB	245	210	Immature	F	0.19
2009124-008	Lake Lashaway	LMB	266	248	Spent	M	0.31
2009124-009	Lake Lashaway	LMB	242	210	Immature	F	0.22
2009124-010	Lake Lashaway	LMB	270	293	Spent	M	0.24
2009124-011	Lake Lashaway	LMB	325	440	Spent	M	0.25
2009124-012	Lake Lashaway	LMB	417	1105	Spent	F	0.47
2009124-013	Lake Lashaway	LMB	260	268	Spent	M	0.22
2009124-014	Lake Lashaway	LMB	233	192	Spent	M	0.25
2009124-015	Lake Lashaway	LMB	359	630	Spent	M	0.31

FISH MERCURY LONG-TERM MONITORING 2009 ANNUAL DATA REPORT

SAMPLE #	LAKE	SP	L	WT	S	STG	HG
2009124-016	Lake Lashaway	LMB	255	245	Spent	F	0.22
2009124-017	Lake Lashaway	LMB	282	350	Spent	M	0.19
2009124-018	Lake Lashaway	YP	176	60	Immature	F	0.16
2009124-019	Lake Lashaway	YP	200	82	Resting	F	0.17
2009124-020	Lake Lashaway	YP	182	70	Immature	F	0.17
2009124-021	Lake Lashaway	YP	214	120	Immature	F	0.22
2009124-022	Lake Lashaway	YP	180	68	Resting	F	0.22
2009124-023	Lake Lashaway	YP	203	95	Resting	F	0.23
2009124-024	Lake Lashaway	YP	173	60	Immature	F	0.15
2009124-025	Lake Lashaway	YP	202	92	Resting	F	0.21
2009124-026	Lake Lashaway	YP	170	57	Immature	F	0.16
2009124-027	Lake Lashaway	YP	233	170	Resting	F	0.17
2009124-028	Lake Lashaway	YP	264	215	Resting	F	0.19
2009124-029	Lake Lashaway	YP	186	81	Resting	F	0.19
2009124-030	Lake Lashaway	YP	226	125	Resting	F	0.18
2009124-031	Lake Lashaway	YP	216	130	Resting	F	0.19
2009124-032	Lake Lashaway	YP	266	200	Resting	F	0.28
2009124-033	Lake Lashaway	YP	262	215	Resting	F	0.33
2009124-034	Lake Lashaway	YP	307	312	Resting	F	0.35
2009124-035	Lake Lashaway	YP	215	130	Resting	F	0.25
2009124-036	Lake Lashaway	YP	273	252	Resting	F	0.38
2009124-037	Lake Lashaway	YP	204	100	Resting	M	0.22
2009124-038	Lake Lashaway	YP	167	50	Resting	M	0.16
2009124-039	Lake Lashaway	YP	157	48	Resting	M	0.15
2009124-040	Lake Lashaway	YP	166	52	Immature	F	0.15
2009124-041	Lake Lashaway	YP	162	53	Resting	M	0.10
2009124-042	Lake Lashaway	YP	237	160	Resting	F	0.22
2009124-043	Lake Lashaway	YP	187	78	Immature	F	0.19

FISH MERCURY LONG-TERM MONITORING 2009 ANNUAL DATA REPORT

SAMPLE #	LAKE	SP	L	WT	S	STG	HG
2009124-044	Lake Lashaway	YP	165	60	Immature	F	0.22
2009124-045	Lake Lashaway	YP	167	60	Immature	F	0.19
2009124-046	Lake Lashaway	YP	166	50	Resting	M	0.14
2009124-047	Lake Lashaway	YP	165	60	Immature	F	0.13
2009120-004	Lake Nippenicket	LMB	302	440	Developing	M	0.59
2009120-005	Lake Nippenicket	LMB	325	450	Developing	M	0.74
2009120-006	Lake Nippenicket	LMB	317	452	Developing	M	0.69
2009120-007	Lake Nippenicket	LMB	343	553	Developing	M	0.81
2009120-008	Lake Nippenicket	LMB	236	165	Immature	F	0.41
2009120-009	Lake Nippenicket	LMB	274	270	Developing	M	0.54
2009120-010	Lake Nippenicket	LMB	425	990	Developing	M	1.60
2009120-011	Lake Nippenicket	LMB	438	1298	Developing	F	1.10
2009120-012	Lake Nippenicket	LMB	426	1085	Developing	M	1.10
2009120-013	Lake Nippenicket	LMB	434	1160	Developing	M	1.50
2009120-014	Lake Nippenicket	LMB	388	780	Developing	F	0.95
2009120-015	Lake Nippenicket	LMB	335	520	Developing	M	0.79
2009120-016	Lake Nippenicket	LMB	437	1349	Developing	M	1.80
2009120-017	Lake Nippenicket	LMB	382	855	Developing	M	1.10
2009120-018	Lake Nippenicket	LMB	384	890	Developing	F	0.78
2009120-019	Lake Nippenicket	YP	187	85	Resting	F	0.32
2009120-020	Lake Nippenicket	YP	205	110	Resting	F	0.55
2009120-021	Lake Nippenicket	YP	226	163	Resting	M	0.69
2009120-022	Lake Nippenicket	YP	190	89	Resting	F	0.33
2009120-023	Lake Nippenicket	YP	217	130	Resting	M	0.46
2009120-024	Lake Nippenicket	YP	230	168	Resting	F	0.40
2009120-025	Lake Nippenicket	YP	244	180	Resting	F	0.77
2009120-026	Lake Nippenicket	YP	226	139	Resting	F	0.48
2009120-027	Lake Nippenicket	YP	255	205	Resting	F	0.68

FISH MERCURY LONG-TERM MONITORING 2009 ANNUAL DATA REPORT

SAMPLE #	LAKE	SP	L	WT	S	STG	HG
2009120-028	Lake Nippenicket	YP	214	132	Resting	M	0.45
2009120-029	Lake Nippenicket	YP	195	95	Resting	F	0.36
2009120-030	Lake Nippenicket	YP	195	100	Resting	M	0.46
2009120-031	Lake Nippenicket	YP	204	108	Resting	M	0.38
2009120-032	Lake Nippenicket	YP	215	115	Resting	F	0.40
2009120-033	Lake Nippenicket	YP	214	150	Resting	F	0.39
2009120-034	Lake Nippenicket	YP	189	84	Resting	M	0.39
2009120-035	Lake Nippenicket	YP	170	65	Resting	F	0.24
2009120-036	Lake Nippenicket	YP	184	82	Resting	M	0.57
2009120-037	Lake Nippenicket	YP	192	98	Resting	M	0.36
2009120-038	Lake Nippenicket	YP	215	118	Resting	F	0.66
2009120-039	Lake Nippenicket	YP	200	100	Resting	M	0.43
2009120-040	Lake Nippenicket	YP	185	62	Resting	M	0.44
2009120-041	Lake Nippenicket	YP	181	75	Resting	M	0.37
2009120-042	Lake Nippenicket	YP	174	70	Resting	F	0.27
2009120-043	Lake Nippenicket	YP	187	82	Resting	F	0.46
2009120-044	Lake Nippenicket	YP	221	124	Resting	F	0.41
2009120-045	Lake Nippenicket	YP	191	90	Resting	F	0.34
2009120-046	Lake Nippenicket	YP	189	85	Resting	F	0.30
2009120-047	Lake Nippenicket	YP	165	59	Resting	F	0.20
2009120-048	Lake Nippenicket	YP	166	59	Resting	F	0.24
2009132-004	Lake Pentucket	LMB	295	378	Spent	M	0.16
2009132-005	Lake Pentucket	LMB	252	190	Immature	F	0.16
2009132-006	Lake Pentucket	LMB	191	80	Immature	M	0.34
2009132-007	Lake Pentucket	LMB	170	50	Immature	F	0.29
2009137-004	Laurel Lake	LMB	215	145	Immature	M	0.21
2009137-005	Laurel Lake	LMB	242	200	Immature	M	0.21
2009137-006	Laurel Lake	LMB	136	36	Immature	F	0.12

FISH MERCURY LONG-TERM MONITORING 2009 ANNUAL DATA REPORT

SAMPLE #	LAKE	SP	L	WT	S	STG	HG
2009137-007	Laurel Lake	LMB	137	35	Immature	M	0.12
2009137-008	Laurel Lake	LMB	348	504	Spent	M	0.58
2009137-009	Laurel Lake	LMB	312	398	Spent	M	0.36
2009137-010	Laurel Lake	LMB	292	333	Spent	F	0.36
2009137-011	Laurel Lake	LMB	311	395	Spent	M	0.35
2009137-012	Laurel Lake	LMB	286	320	Partially Spent	F	0.34
2009137-013	Laurel Lake	LMB	312	424	Resting	F	0.37
2009137-014	Laurel Lake	LMB	299	358	Spent	M	0.32
2009137-015	Laurel Lake	LMB	296	306	Partially Spent	F	0.31
2009137-016	Laurel Lake	LMB	331	532	Spent	F	0.46
2009137-017	Laurel Lake	LMB	341	521	Partially Spent	F	0.51
2009137-018	Laurel Lake	LMB	320	428	Spent	M	0.55
2009137-019	Laurel Lake	YP	135	27	Immature	F	0.11
2009137-020	Laurel Lake	YP	202	101	Resting	F	0.16
2009137-021	Laurel Lake	YP	139	32	Immature	F	0.13
2009137-022	Laurel Lake	YP	146	32	Resting	F	0.09
2009137-023	Laurel Lake	YP	121	17	Immature	F	0.13
2009137-024	Laurel Lake	YP	127	21	Immature	F	0.09
2009137-025	Laurel Lake	YP	150	39	Resting	F	0.10
2009137-026	Laurel Lake	YP	244	169	Resting	F	0.26
2009137-027	Laurel Lake	YP	235	153	Resting	F	0.19
2009137-028	Laurel Lake	YP	266	226	Resting	F	0.26
2009137-029	Laurel Lake	YP	136	27	Immature	M	0.11
2009137-030	Laurel Lake	YP	124	21	Immature	F	0.09
2009137-031	Laurel Lake	YP	149	37	Immature	F	0.11
2009137-032	Laurel Lake	YP	127	23	Immature	F	0.10
2009137-033	Laurel Lake	YP	145	34	Immature	F	0.11
2009137-034	Laurel Lake	YP	124	19	Immature	M	0.09

FISH MERCURY LONG-TERM MONITORING 2009 ANNUAL DATA REPORT

SAMPLE #	LAKE	SP	L	WT	S	STG	HG
2009137-035	Laurel Lake	YP	128	26	Immature	F	0.10
2009137-036	Laurel Lake	YP	131	26	Immature	F	0.11
2009137-037	Laurel Lake	YP	124	19	Immature	F	0.11
2009133-004	Long Pond, Dracut	LMB	306	353	Spent	M	0.17
2009133-005	Long Pond, Dracut	LMB	321	398	Spent	F	0.17
2009133-006	Long Pond, Dracut	LMB	309	338	Spent	M	0.23
2009133-007	Long Pond, Dracut	LMB	264	248	Spent	M	0.21
2009133-008	Long Pond, Dracut	LMB	334	426	Spent	F	0.18
2009133-009	Long Pond, Dracut	LMB	282	310	Immature	M	0.10
2009133-010	Long Pond, Dracut	LMB	327	467	Spent	M	0.14
2009133-011	Long Pond, Dracut	LMB	340	510	Spent	F	0.14
2009133-012	Long Pond, Dracut	LMB	340	511	Spent	F	0.16
2009133-013	Long Pond, Dracut	LMB	352	615	Spent	M	0.21
2009133-014	Long Pond, Dracut	LMB	350	605	Spent	F	0.22
2009133-015	Long Pond, Dracut	LMB	401	904	Spent	F	0.23
2009133-016	Long Pond, Dracut	LMB	407	898	Spent	M	0.37
2009133-017	Long Pond, Dracut	LMB	510	1740	Spent	F	0.96
2009133-018	Long Pond, Dracut	LMB	462	1318	Spent	F	0.71
2009133-019	Long Pond, Dracut	YP	202	94	Resting	F	0.09
2009133-020	Long Pond, Dracut	YP	188	81	Resting	F	0.08
2009133-021	Long Pond, Dracut	YP	198	99	Resting	M	0.08
2009133-022	Long Pond, Dracut	YP	155	44	Resting	M	0.03
2009133-023	Long Pond, Dracut	YP	175	66	Resting	F	0.05
2009133-024	Long Pond, Dracut	YP	175	62	Resting	M	0.08
2009133-025	Long Pond, Dracut	YP	195	82	Resting	F	0.15
2009133-026	Long Pond, Dracut	YP	171	58	Resting	F	0.05
2009133-027	Long Pond, Dracut	YP	203	90	Resting	M	0.11
2009133-028	Long Pond, Dracut	YP	175	65	Resting	F	0.06

FISH MERCURY LONG-TERM MONITORING 2009 ANNUAL DATA REPORT

SAMPLE #	LAKE	SP	L	WT	S	STG	HG
2009133-029	Long Pond, Dracut	YP	208	108	Resting	F	0.09
2009133-030	Long Pond, Dracut	YP	188	80	Resting	F	0.09
2009133-031	Long Pond, Dracut	YP	174	59	Resting	F	0.05
2009133-032	Long Pond, Dracut	YP	204	101	Resting	M	0.13
2009133-033	Long Pond, Dracut	YP	182	77	Resting	M	0.07
2009133-034	Long Pond, Dracut	YP	193	84	Resting	M	0.08
2009133-035	Long Pond, Dracut	YP	194	89	Resting	F	0.13
2009133-036	Long Pond, Dracut	YP	181	64	Resting	F	0.04
2009133-037	Long Pond, Dracut	YP	174	62	Resting	F	0.07
2009133-038	Long Pond, Dracut	YP	162	49	Resting	F	0.04
2009133-039	Long Pond, Dracut	YP	181	74	Resting	M	0.07
2009133-040	Long Pond, Dracut	YP	192	79	Resting	F	0.09
2009133-041	Long Pond, Dracut	YP	188	74	Resting	M	0.09
2009133-042	Long Pond, Dracut	YP	153	43	Immature	M	0.04
2009133-043	Long Pond, Dracut	YP	185	78	Resting	F	0.07
2009133-044	Long Pond, Dracut	YP	176	66	Resting	M	0.06
2009133-045	Long Pond, Dracut	YP	177	59	Resting	F	0.04
2009133-046	Long Pond, Dracut	YP	177	62	Resting	M	0.06
2009133-047	Long Pond, Dracut	YP	170	59	Resting	F	0.05
2009133-048	Long Pond, Dracut	YP	153	46	Immature	M	0.04
2009125-004	Massapoag, Dunstable	LMB	506	1962	Developing	F	1.30
2009125-005	Massapoag, Dunstable	LMB	467	1400	Ripe	F	1.10
2009125-006	Massapoag, Dunstable	LMB	317	459	Developing	M	0.57
2009125-007	Massapoag, Dunstable	LMB	330	500	Ripe	F	0.48
2009125-008	Massapoag, Dunstable	LMB	296	322	Developing	M	0.61
2009125-009	Massapoag, Dunstable	LMB	282	322	Developing	F	0.32
2009125-010	Massapoag, Dunstable	LMB	295	327	Developing	M	0.48

FISH MERCURY LONG-TERM MONITORING 2009 ANNUAL DATA REPORT

SAMPLE #	LAKE	SP	L	WT	S	STG	HG
2009125-011	Massapoag, Dunstable	LMB	376	828	Developing	M	0.40
2009125-012	Massapoag, Dunstable	LMB	166	51	Developing	F	0.72
2009125-013	Massapoag, Dunstable	LMB	122	23	Developing	M	0.38
2009125-014	Massapoag, Dunstable	LMB	122	20	Immature	M	0.27
2009125-015	Massapoag, Dunstable	LMB	136	32	Developing	M	0.86
2009125-016	Massapoag, Dunstable	LMB	336	526	Developing	F	0.50
2009125-017	Massapoag, Dunstable	LMB	471	1486	Immature	F	0.27
2009125-018	Massapoag, Dunstable	LMB	374	687	Developing	F	0.42
2009125-019	Massapoag, Dunstable	YP	304	376	Resting	F	0.24
2009125-020	Massapoag, Dunstable	YP	351	606	Resting	F	0.25
2009125-021	Massapoag, Dunstable	YP	320	459	Resting	F	0.45
2009125-022	Massapoag, Dunstable	YP	315	443	Resting	F	0.30
2009125-023	Massapoag, Dunstable	YP	483	1590	Resting	F	0.55
2009125-024	Massapoag, Dunstable	YP	324	485	Resting	F	0.44
2009125-025	Massapoag, Dunstable	YP	425	1245	Resting	F	0.31
2009125-026	Massapoag, Dunstable	YP	464	1368	Resting	M	0.43
2009125-027	Massapoag, Dunstable	YP	451	1316	Resting	F	0.30
2009125-028	Massapoag, Dunstable	YP	320	465	Resting	M	0.42
2009125-029	Massapoag, Dunstable	YP	219	128	Resting	F	0.34
2009125-030	Massapoag, Dunstable	YP	190	79	Resting	F	0.18
2009125-031	Massapoag, Dunstable	YP	177	59	Resting	F	0.38
2009125-032	Massapoag, Dunstable	YP	185	68	Resting	F	0.55
2009125-033	Massapoag, Dunstable	YP	225	135	Resting	F	0.56
2009125-034	Massapoag, Dunstable	YP	229	125	Resting	M	0.32

FISH MERCURY LONG-TERM MONITORING 2009 ANNUAL DATA REPORT

SAMPLE #	LAKE	SP	L	WT	S	STG	HG
2009125-035	Massapoag, Dunstable	YP	174	61	Resting	F	0.15
2009125-036	Massapoag, Dunstable	YP	194	85	Resting	F	0.21
2009125-037	Massapoag, Dunstable	YP	259	204	Resting	F	0.53
2009125-038	Massapoag, Dunstable	YP	183	66	Resting	F	0.63
2009125-039	Massapoag, Dunstable	YP	227	128	Resting	M	0.24
2009125-040	Massapoag, Dunstable	YP	173	60	Resting	F	0.44
2009125-041	Massapoag, Dunstable	YP	182	65	Resting	F	0.34
2009125-042	Massapoag, Dunstable	YP	209	116	Resting	M	0.30
2009125-043	Massapoag, Dunstable	YP	195	81	Resting	F	0.25
2009125-044	Massapoag, Dunstable	YP	167	55	Resting	F	0.32
2009125-045	Massapoag, Dunstable	YP	211	106	Resting	F	0.64
2009125-046	Massapoag, Dunstable	YP	185	73	Resting	F	0.15
2009125-047	Massapoag, Dunstable	YP	166	56	Resting	F	0.31
2009125-048	Massapoag, Dunstable	YP	160	50	Resting	F	0.38
2009119-004	Massapoag, Sharon	LMB	165	55	Developing	M	0.73
2009119-005	Massapoag, Sharon	LMB	165	47	Developing	M	0.59
2009119-006	Massapoag, Sharon	LMB	193	73	Developing	M	0.89
2009119-007	Massapoag, Sharon	LMB	186	71	Developing	F	0.17
2009119-008	Massapoag, Sharon	LMB	185	78	Immature	M	0.38
2009119-009	Massapoag, Sharon	LMB	185	74	Immature	M	0.15
2009119-010	Massapoag, Sharon	LMB	170	58	Developing	M	0.71
2009119-011	Massapoag, Sharon	LMB	173	55	Developing	F	0.67
2009119-012	Massapoag, Sharon	LMB	241	148	Developing	F	0.57
2009119-013	Massapoag, Sharon	LMB	185	70	Developing	M	0.15
2009119-014	Massapoag, Sharon	LMB	186	68	Developing	M	0.81
2009119-015	Massapoag, Sharon	LMB	190	82	Developing	M	0.17

FISH MERCURY LONG-TERM MONITORING 2009 ANNUAL DATA REPORT

SAMPLE #	LAKE	SP	L	WT	S	STG	HG
2009119-016	Massapoag, Sharon	LMB	206	90	Developing	M	0.80
2009119-017	Massapoag, Sharon	LMB	182	60	Immature	M	0.13
2009119-018	Massapoag, Sharon	LMB	228	140	Developing	M	0.57
2009119-019	Massapoag, Sharon	YP	184	70	Immature	F	0.09
2009119-020	Massapoag, Sharon	YP	255	165	Resting	F	0.27
2009119-021	Massapoag, Sharon	YP	251	200	Resting	F	0.09
2009119-022	Massapoag, Sharon	YP	177	60	Resting	F	0.10
2009119-023	Massapoag, Sharon	YP	182	78	Resting	F	0.08
2009119-024	Massapoag, Sharon	YP	285	260	Resting	M	0.13
2009119-025	Massapoag, Sharon	YP	292	320	Resting	M	0.08
2009119-026	Massapoag, Sharon	YP	193	180	Resting	F	0.11
2009119-027	Massapoag, Sharon	YP	188	75	Resting	F	0.15
2009119-028	Massapoag, Sharon	YP	223	140	Resting	F	0.13
2009119-029	Massapoag, Sharon	YP	174	58	Resting	M	0.09
2009119-030	Massapoag, Sharon	YP	221	113	Immature	F	0.10
2009119-031	Massapoag, Sharon	YP	275	240	Resting	F	0.13
2009119-032	Massapoag, Sharon	YP	228	115	Resting	M	0.12
2009119-033	Massapoag, Sharon	YP	245	170	Immature	F	0.07
2009119-034	Massapoag, Sharon	YP	190	70	Immature	M	0.08
2009119-035	Massapoag, Sharon	YP	186	65	Immature	M	0.07
2009119-036	Massapoag, Sharon	YP	163	48	Immature	F	0.06
2009119-037	Massapoag, Sharon	YP	213	95	Immature	F	0.07
2009119-038	Massapoag, Sharon	YP	170	50	Immature	F	0.13
2009119-039	Massapoag, Sharon	YP	158	42	Immature	F	0.04
2009119-040	Massapoag, Sharon	YP	160	47	Immature	F	0.07
2009119-041	Massapoag, Sharon	YP	427	985	Immature	M	0.06
2009119-042	Massapoag, Sharon	YP	476	1640	Immature	F	0.09
2009134-004	Millvale Reservoir	LMB	371	785	Immature	F	0.33

FISH MERCURY LONG-TERM MONITORING 2009 ANNUAL DATA REPORT

SAMPLE #	LAKE	SP	L	WT	S	STG	HG
2009134-005	Millvale Reservoir	LMB	402	920	Immature	F	0.36
2009134-006	Millvale Reservoir	LMB	430	1200	Spent	M	0.46
2009134-007	Millvale Reservoir	LMB	320	420	Spent	M	0.62
2009134-008	Millvale Reservoir	YP	320	490	Resting	F	0.41
2009134-009	Millvale Reservoir	LMB	351	650	Resting	M	0.40
2009134-010	Millvale Reservoir	YP	376	710	Resting	F	0.55
2009134-011	Millvale Reservoir	YP	351	540	Resting	M	0.29
2009134-012	Millvale Reservoir	YP	372	675	Resting	F	0.08
2009134-013	Millvale Reservoir	YP	186	90	Resting	F	0.48
2009134-014	Millvale Reservoir	YP	345	540	Resting	F	0.09
2009134-015	Millvale Reservoir	LMB	418	980	Spent	M	0.35
2009134-016	Millvale Reservoir	LMB	331	540	Spent	M	0.30
2009134-017	Millvale Reservoir	LMB	129	22	Spent	M	0.44
2009134-018	Millvale Reservoir	LMB	132	24	Spent	F	0.70
2009134-019	Millvale Reservoir	LMB	138	28	Spent	M	0.66
2009134-020	Millvale Reservoir	LMB	136	25	Spent	M	0.39
2009134-021	Millvale Reservoir	LMB	147	32	Spent	M	0.63
2009134-022	Millvale Reservoir	LMB	145	30	Spent	F	0.77
2009134-023	Millvale Reservoir	LMB	150	33	Partially Spent	F	1.20
2009134-024	Millvale Reservoir	LMB	178	57	Spent	F	0.48
2009135-004	Newfield Pond	LMB	171	54	Developing	F	1.10
2009135-005	Newfield Pond	LMB	142	30	Developing	M	0.25
2009135-006	Newfield Pond	LMB	140	29	Developing	F	0.38
2009135-007	Newfield Pond	LMB	134	26	Developing	M	0.42
2009135-008	Newfield Pond	LMB	124	20	Develpoing	F	0.44
2009135-009	Newfield Pond	LMB	154	39	Developing	M	0.26
2009135-010	Newfield Pond	LMB	136	28	Developing	M	0.48
2009135-011	Newfield Pond	LMB	134	24	Developing	M	0.50

FISH MERCURY LONG-TERM MONITORING 2009 ANNUAL DATA REPORT

SAMPLE #	LAKE	SP	L	WT	S	STG	HG
2009135-012	Newfield Pond	LMB	140	21	Developing	M	0.21
2009135-013	Newfield Pond	LMB	139	28	Developing	M	0.69
2009135-014	Newfield Pond	LMB	134	25	Developing	M	0.18
2009135-015	Newfield Pond	LMB	148	34	Developing	M	0.24
2009135-016	Newfield Pond	LMB	162	43	Developing	F	0.24
2009135-017	Newfield Pond	LMB	207	110	Developing	M	0.17
2009135-018	Newfield Pond	LMB	252	192	Developing	M	0.26
2009135-019	Newfield Pond	YP	202	118	Resting	F	0.10
2009135-020	Newfield Pond	YP	209	114	Resting	F	0.14
2009135-021	Newfield Pond	YP	277	268	Resting	F	0.18
2009135-022	Newfield Pond	YP	252	179	Resting	F	0.16
2009135-023	Newfield Pond	YP	295	358	Resting	M	0.22
2009135-024	Newfield Pond	YP	265	242	Resting	F	0.15
2009135-025	Newfield Pond	YP	447	1334	Resting	M	0.13
2009135-026	Newfield Pond	YP	469	1522	Resting	M	0.11
2009135-027	Newfield Pond	YP	425	1145	Resting	F	0.12
2009135-028	Newfield Pond	YP	466	1620	Immature	F	0.09
2009135-029	Newfield Pond	YP	428	1131	Resting	F	0.28
2009135-030	Newfield Pond	YP	285	305	Resting	F	0.27
2009135-031	Newfield Pond	YP	229	152	Resting	F	0.44
2009135-032	Newfield Pond	YP	185	71	Resting	F	0.18
2009135-033	Newfield Pond	YP	185	68	Resting	F	0.32
2009135-034	Newfield Pond	YP	186	75	Resting	M	0.21
2009135-035	Newfield Pond	YP	164	43	Resting	M	0.21
2009135-036	Newfield Pond	YP	168	49	Resting	F	0.16
2009135-037	Newfield Pond	YP	159	40	Resting	M	0.24
2009135-038	Newfield Pond	YP	160	42	Resting	F	0.21
2009135-039	Newfield Pond	YP	145	31	Resting	F	0.16

FISH MERCURY LONG-TERM MONITORING 2009 ANNUAL DATA REPORT

SAMPLE #	LAKE	SP	L	WT	S	STG	HG
2009135-040	Newfield Pond	YP	148	31	Resting	M	0.16
2009135-041	Newfield Pond	YP	147	29	Resting	M	0.33
2009135-042	Newfield Pond	YP	142	29	Resting	F	0.16
2009135-043	Newfield Pond	YP	142	31	Immature	F	0.09
2009135-044	Newfield Pond	YP	180	59	Immature	M	0.09
2009135-045	Newfield Pond	YP	171	51	Resting	M	0.09
2009135-046	Newfield Pond	YP	163	45	Resting	M	0.12
2009135-047	Newfield Pond	YP	154	40	Resting	F	0.09
2009135-048	Newfield Pond	YP	155	37	Resting	F	0.10
2009122-004	North Watuppa Pond	YP	160	53	Resting	F	0.72
2009122-005	North Watuppa Pond	YP	152	35	Resting	F	0.37
2009122-006	North Watuppa Pond	YP	143	30	Resting	M	0.55
2009122-007	North Watuppa Pond	YP	141	29	Resting	F	0.29
2009122-008	North Watuppa Pond	YP	140	27	Resting	F	1.10
2009122-009	North Watuppa Pond	YP	174	51	Resting	F	0.47
2009122-010	North Watuppa Pond	YP	154	35	Immature	F	0.22
2009122-011	North Watuppa Pond	YP	155	35	Resting	F	0.55
2009122-012	North Watuppa Pond	YP	151	32	Resting	F	1.00
2009122-013	North Watuppa Pond	YP	165	40	Resting	M	0.51
2009122-014	North Watuppa Pond	YP	134	29	Resting	F	0.29
2009122-015	North Watuppa Pond	YP	146	33	Resting	M	0.24
2009122-016	North Watuppa Pond	YP	143	31	Resting	F	0.68
2009122-017	North Watuppa Pond	YP	362	634	Resting	F	0.25
2009122-018	North Watuppa Pond	YP	390	935	Resting	M	0.69
2009122-019	North Watuppa Pond	YP	304	395	Resting	F	0.54
2009122-020	North Watuppa Pond	YP	287	284	Resting	F	0.47
2009122-021	North Watuppa Pond	YP	222	141	Resting	F	0.60
2009122-022	North Watuppa Pond	YP	242	154	Resting	F	0.32

FISH MERCURY LONG-TERM MONITORING 2009 ANNUAL DATA REPORT

SAMPLE #	LAKE	SP	L	WT	S	STG	HG
2009122-023	North Watuppa Pond	YP	233	146	Resting	F	0.25
2009122-024	North Watuppa Pond	YP	245	180	Resting	F	0.45
2009122-025	North Watuppa Pond	YP	186	78	Resting	F	0.21
2009122-026	North Watuppa Pond	YP	168	60	Resting	F	0.26
2009122-027	North Watuppa Pond	YP	170	61	Resting	F	0.21
2009122-028	North Watuppa Pond	YP	211	109	Resting	F	0.28
2009122-029	North Watuppa Pond	YP	164	53	Immature	F	0.25
2009122-030	North Watuppa Pond	YP	219	136	Immature	F	0.26
2009122-031	North Watuppa Pond	YP	160	56	Immature	F	0.38
2009122-032	North Watuppa Pond	YP	185	78	Immature	F	0.32
2009122-033	North Watuppa Pond	YP	205	110	Immature	M	0.16
2009122-034	North Watuppa Pond	LMB	237	154	Spent	F	1.40
2009122-035	North Watuppa Pond	LMB	214	122	Spent	M	1.30
2009122-036	North Watuppa Pond	LMB	436	1450	Spent	F	0.92
2009122-037	North Watuppa Pond	LMB	396	863	Spent	F	1.20
2009122-038	North Watuppa Pond	LMB	325	494	Spent	M	1.30
2009122-039	North Watuppa Pond	LMB	241	217	Spent	M	0.22
2009122-040	North Watuppa Pond	LMB	245	188	Spent	M	1.10
2009122-041	North Watuppa Pond	LMB	459	1400	Spent	M	1.10
2009122-042	North Watuppa Pond	LMB	357	710	Spent	F	1.20
2009122-043	North Watuppa Pond	LMB	441	1352	Spent	F	1.10
2009122-044	North Watuppa Pond	LMB	245	210	Spent	F	0.79
2009122-045	North Watuppa Pond	LMB	266	248	Spent	M	1.20
2009122-046	North Watuppa Pond	LMB	242	210	Spent	F	1.10
2009122-047	North Watuppa Pond	LMB	270	293	Spent	F	0.57
2009122-048	North Watuppa Pond	LMB	325	440	Spent	M	1.40
2009129-004	Pomps Pond	LMB	417	1105	Spent	M	0.85
2009129-005	Pomps Pond	LMB	260	268	Resting	F	0.57

FISH MERCURY LONG-TERM MONITORING 2009 ANNUAL DATA REPORT

SAMPLE #	LAKE	SP	L	WT	S	STG	HG
2009129-006	Pomps Pond	LMB	233	192	Spent	F	0.33
2009129-007	Pomps Pond	LMB	359	630	Spent	M	0.35
2009129-008	Pomps Pond	LMB	255	245	Spent	F	0.31
2009129-009	Pomps Pond	LMB	282	350	Resting	F	0.56
2009129-010	Pomps Pond	LMB	176	60	Spent	M	0.25
2009129-011	Pomps Pond	LMB	200	82	Spent	M	0.17
2009129-012	Pomps Pond	LMB	182	70	Spent	M	0.24
2009129-013	Pomps Pond	LMB	214	120	Spent	M	0.21
2009129-014	Pomps Pond	LMB	180	68	Spent	M	0.23
2009129-015	Pomps Pond	LMB	203	95	Spent	M	0.25
2009129-016	Pomps Pond	LMB	173	60	Immature	F	0.24
2009129-017	Pomps Pond	LMB	202	92	Spent	M	0.38
2009129-018	Pomps Pond	LMB	170	57	Spent	M	0.35
2009129-019	Pomps Pond	YP	233	170	Resting	M	0.13
2009129-020	Pomps Pond	YP	264	215	Immature	M	0.05
2009129-021	Pomps Pond	YP	186	81	Resting	F	0.14
2009129-022	Pomps Pond	YP	226	125	Resting	F	0.11
2009129-023	Pomps Pond	YP	216	130	Resting	F	0.17
2009129-024	Pomps Pond	YP	266	200	Resting	F	0.10
2009129-025	Pomps Pond	YP	262	215	Resting	M	0.18
2009129-026	Pomps Pond	YP	307	312	Resting	F	0.10
2009129-027	Pomps Pond	YP	215	130	Immature	M	0.05
2009129-028	Pomps Pond	YP	273	252	Resting	F	0.17
2009129-029	Pomps Pond	YP	204	100	Resting	M	0.23
2009129-030	Pomps Pond	YP	167	50	Immature	F	0.05
2009129-031	Pomps Pond	YP	157	48	Resting	F	0.13
2009129-032	Pomps Pond	YP	166	52	Resting	F	0.14
2009129-033	Pomps Pond	YP	162	53	Resting	M	0.15

FISH MERCURY LONG-TERM MONITORING 2009 ANNUAL DATA REPORT

SAMPLE #	LAKE	SP	L	WT	S	STG	HG
2009129-034	Pomps Pond	YP	237	160	Resting	F	0.27
2009129-035	Pomps Pond	YP	187	78	Resting	M	0.37
2009129-036	Pomps Pond	YP	165	60	Resting	F	0.18
2009110-007	Quabbin Reservoir	LMB	167	60	Ripe	F	0.62
2009110-008	Quabbin Reservoir	LMB	166	50	Developing	M	0.32
2009110-009	Quabbin Reservoir	LMB	165	60	Developing	M	0.53
2009110-010	Quabbin Reservoir	LMB			Developing	M	0.38
2009110-011	Quabbin Reservoir	LMB	302	440	Ripe	F	0.48
2009110-012	Quabbin Reservoir	LMB	325	450	Developing	M	0.45
2009110-013	Quabbin Reservoir	LMB	317	452	Developing	F	0.39
2009110-014	Quabbin Reservoir	LMB	343	553	Developing	F	0.32
2009110-015	Quabbin Reservoir	LMB	236	165	Developing	M	0.29
2009110-016	Quabbin Reservoir	LMB	274	270	Immature	F	0.18
2009110-017	Quabbin Reservoir	LMB	425	990	Immature	F	0.23
2009110-018	Quabbin Reservoir	LMB	438	1298	Developing	M	0.19
2009110-019	Quabbin Reservoir	LMB	426	1085	Developing	M	0.74
2009110-020	Quabbin Reservoir	YP	434	1160	Ripe	F	0.36
2009110-021	Quabbin Reservoir	YP	388	780	Immature	F	0.27
2009110-022	Quabbin Reservoir	YP	335	520	Immature	F	0.28
2009110-023	Quabbin Reservoir	YP	437	1349	Immature	F	0.32
2009110-024	Quabbin Reservoir	LT	382	855	Spent	M	0.56
2009110-025	Quabbin Reservoir	LT	384	890	Spent	F	0.58
2009110-026	Quabbin Reservoir	LT	187	85	Spent	F	0.41
2009110-027	Quabbin Reservoir	LT	205	110	Spent	F	0.52
2009110-028	Quabbin Reservoir	LT	226	163	Spent	F	0.38
2009110-029	Quabbin Reservoir	YP	190	89	Immature	F	0.20
2009110-030	Quabbin Reservoir	YP	217	130	Immature	F	0.25
2009110-031	Quabbin Reservoir	YP	230	168	Immature	F	0.26

FISH MERCURY LONG-TERM MONITORING 2009 ANNUAL DATA REPORT

SAMPLE #	LAKE	SP	L	WT	S	STG	HG
2009110-032	Quabbin Reservoir	YP	244	180	Immature	F	0.18
2009110-033	Quabbin Reservoir	YP	226	139	Immature	F	0.20
2009110-034	Quabbin Reservoir	YP	255	205	Immature	F	0.23
2009110-035	Quabbin Reservoir	YP	214	132	Immature	F	0.21
2009110-036	Quabbin Reservoir	YP	195	95	Immature	F	0.18
2009110-037	Quabbin Reservoir	YP	195	100	Immature	F	0.15
2009110-038	Quabbin Reservoir	YP	204	108	Immature	F	0.14
2009110-039	Quabbin Reservoir	YP	215	115	Immature	F	0.19
2009110-040	Quabbin Reservoir	YP	214	150	Immature	F	0.22
2009110-041	Quabbin Reservoir	YP	189	84	Immature	F	0.18
2009110-042	Quabbin Reservoir	YP	170	65	Immature	F	0.17
2009110-043	Quabbin Reservoir	YP	184	82	Immature	F	0.17
2009110-044	Quabbin Reservoir	YP	192	98	Immature	F	0.15
2009110-045	Quabbin Reservoir	YP	215	118	Immature	F	0.16
2009110-046	Quabbin Reservoir	YP	200	100	Immature	F	0.14
2009110-047	Quabbin Reservoir	YP	185	62	Immature	F	0.18
2009110-048	Quabbin Reservoir	YP	181	75	Immature	F	0.17
2009110-049	Quabbin Reservoir	YP	174	70	Immature	F	0.18
2009110-050	Quabbin Reservoir	YP	187	82	Immature	F	0.20
2009118-004	Rock Pond	LMB	221	124	Ripe	F	1.40
2009118-005	Rock Pond	LMB	191	90	Immature	M	0.49
2009118-006	Rock Pond	LMB	189	85	Developing	F	0.48
2009118-007	Rock Pond	LMB	165	59	Developing	F	0.59
2009118-008	Rock Pond	LMB	166	59	Developing	F	0.53
2009118-009	Rock Pond	LMB	295	378	Developing	M	0.56
2009118-010	Rock Pond	LMB	252	190	Developing	F	0.59
2009118-011	Rock Pond	LMB	191	80	Developing	M	0.51
2009118-012	Rock Pond	LMB	170	50	Developing	F	0.56

FISH MERCURY LONG-TERM MONITORING 2009 ANNUAL DATA REPORT

SAMPLE #	LAKE	SP	L	WT	S	STG	HG
2009118-013	Rock Pond	LMB	215	145	Developing	M	0.56
2009118-014	Rock Pond	LMB	242	200	Developing	F	0.94
2009118-015	Rock Pond	LMB	136	36	Developing	F	0.72
2009118-016	Rock Pond	LMB	137	35	Developing	M	1.00
2009118-017	Rock Pond	LMB	348	504	Developing	M	0.92
2009118-018	Rock Pond	LMB	312	398	Developing	M	1.10
2009118-019	Rock Pond	YP	292	333	Spent	F	0.43
2009118-020	Rock Pond	YP	311	395	Ripe/Running	M	0.24
2009118-021	Rock Pond	YP	286	320	Spent	F	0.37
2009118-022	Rock Pond	YP	312	424	Spent	M	0.50
2009118-023	Rock Pond	YP	299	358	Spent	M	0.12
2009118-024	Rock Pond	YP	296	306	Spent	F	0.46
2009118-025	Rock Pond	YP	331	532	Spent	F	0.60
2009118-026	Rock Pond	YP	341	521	Spent	M	0.18
2009118-027	Rock Pond	YP	320	428	Spent	F	0.44
2009118-028	Rock Pond	YP	135	27	Spent	F	0.24
2009118-029	Rock Pond	YP	202	101	Spent	F	0.44
2009118-030	Rock Pond	YP	139	32	Spent	F	0.44
2009118-031	Rock Pond	YP	146	32	Spent	F	0.48
2009118-032	Rock Pond	YP	121	17	Spent	F	0.45
2009118-033	Rock Pond	YP	127	21	Spent	F	0.46
2009118-034	Rock Pond	YP	150	39	Partly Spent	M	0.17
2009118-035	Rock Pond	YP	244	169	Spent	F	0.26
2009118-036	Rock Pond	YP	235	153	Spent	M	0.12
2009118-037	Rock Pond	YP	266	226	Spent	M	0.32
2009118-038	Rock Pond	YP	136	27	Spent	F	0.11
2009118-039	Rock Pond	YP	124	21	Spent	F	0.30
2009118-040	Rock Pond	YP	149	37	Spent	M	0.59

FISH MERCURY LONG-TERM MONITORING 2009 ANNUAL DATA REPORT

SAMPLE #	LAKE	SP	L	WT	S	STG	HG
2009118-041	Rock Pond	YP	127	23	Immature	F	0.10
2009118-042	Rock Pond	YP	145	34	Spent	M	0.41
2009118-043	Rock Pond	YP	124	19	Spent	M	0.42
2009118-044	Rock Pond	YP	128	26	Partly Spent	M	0.17
2009118-045	Rock Pond	YP	131	26	Spent	F	0.23
2009118-046	Rock Pond	YP	124	19	Spent	M	0.31
2009118-047	Rock Pond	YP	306	353	Spent	F	0.29
2009118-048	Rock Pond	YP	321	398	Spent	F	0.44
2009136-004	Somerset Reservoir	LMB	309	338	Spent	F	0.47
2009136-005	Somerset Reservoir	LMB	264	248	Spent	F	0.65
2009136-006	Somerset Reservoir	LMB	334	426	Spent	M	1.30
2009136-007	Somerset Reservoir	LMB	282	310	Spent	M	0.39
2009136-008	Somerset Reservoir	LMB	327	467	Spent	M	0.77
2009136-009	Somerset Reservoir	LMB	340	510	Spent	M	1.10
2009136-010	Somerset Reservoir	LMB	340	511	Spent	M	1.70
2009136-011	Somerset Reservoir	LMB	352	615	Spent	M	1.60
2009136-012	Somerset Reservoir	LMB	350	605	Spent	M	1.60
2009136-013	Somerset Reservoir	LMB	401	904	Spent	F	1.40
2009136-014	Somerset Reservoir	LMB	407	898	Spent	M	1.50
2009136-015	Somerset Reservoir	LMB	510	1740	Spent	M	1.40
2009136-016	Somerset Reservoir	LMB	462	1318	Immature	M	0.43
2009136-017	Somerset Reservoir	LMB	202	94	Immature	F	0.34
2009136-018	Somerset Reservoir	LMB	188	81	Immature	F	0.31
2009127-004	Stevens Pond	LMB	198	99	Spent	F	0.20
2009127-005	Stevens Pond	LMB	155	44	Immature	M	0.15
2009127-006	Stevens Pond	LMB	175	66	Spent	F	0.17
2009127-007	Stevens Pond	LMB	175	62	Spent	F	0.20
2009127-008	Stevens Pond	LMB	195	82	Spent	M	0.22

FISH MERCURY LONG-TERM MONITORING 2009 ANNUAL DATA REPORT

SAMPLE #	LAKE	SP	L	WT	S	STG	HG
2009127-009	Stevens Pond	LMB	171	58	Immature	M	0.17
2009127-010	Stevens Pond	LMB	203	90	Immature	M	0.15
2009127-011	Stevens Pond	LMB	175	65	Immature	M	0.18
2009127-012	Stevens Pond	LMB	208	108	Spent	M	0.16
2009127-013	Stevens Pond	LMB	188	80	Spent	F	0.29
2009127-014	Stevens Pond	LMB	174	59	Spent	M	0.44
2009127-015	Stevens Pond	LMB	204	101	Spent	M	0.43
2009127-016	Stevens Pond	LMB	182	77	Spent	M	0.47
2009127-017	Stevens Pond	LMB	193	84	Spent	F	0.32
2009127-018	Stevens Pond	LMB	194	89	Spent	F	0.30
2009127-019	Stevens Pond	YP	181	64	Resting	F	0.06
2009127-020	Stevens Pond	YP	174	62	Resting	F	0.14
2009127-021	Stevens Pond	YP	162	49	Immature	M	0.11
2009131-004	Upper Naukeag	LMB	181	74	Immature	F	0.64
2009131-005	Upper Naukeag	LMB	192	79	Developing	F	1.50
2009131-006	Upper Naukeag	LMB	188	74	Developing	F	0.69
2009131-007	Upper Naukeag	LMB	153	43	Developing	M	0.86
2009131-008	Upper Naukeag	LMB	185	78	Developing	F	0.47
2009131-009	Upper Naukeag	LMB	176	66	Developing	M	0.53
2009131-010	Upper Naukeag	LMB	177	59	Developing	M	0.53
2009131-011	Upper Naukeag	YP	177	62	Resting	F	0.71
2009131-012	Upper Naukeag	YP	170	59	Resting	F	0.70
2009131-013	Upper Naukeag	YP	153	46	Resting	F	0.48
2009131-014	Upper Naukeag	YP	506	1962	Partly Spent	M	0.57
2009131-015	Upper Naukeag	YP	467	1400	Spent	M	0.51
2009131-016	Upper Naukeag	YP	317	459	Resting	F	0.66
2009131-017	Upper Naukeag	YP	330	500	Immature	F	0.49
2009131-018	Upper Naukeag	YP	296	322	Resting	M	0.79

FISH MERCURY LONG-TERM MONITORING 2009 ANNUAL DATA REPORT

SAMPLE #	LAKE	SP	L	WT	S	STG	HG
2009131-019	Upper Naukeag	YP	282	322	Resting	F	0.67
2009131-020	Upper Naukeag	YP	295	327	Resting	F	0.50
2009131-021	Upper Naukeag	YP	377	828	Resting	F	0.57
2009131-022	Upper Naukeag	YP	166	51	Resting	F	0.77
2009131-023	Upper Naukeag	YP	122	23	Resting	F	0.88
2009131-024	Upper Naukeag	YP	122	20	Resting	F	0.79
2009131-025	Upper Naukeag	YP	136	32	Resting	F	0.42
2009131-026	Upper Naukeag	YP	336	526	Resting	F	0.55
2009131-027	Upper Naukeag	YP	471	1486	Resting	M	0.54
2009131-028	Upper Naukeag	YP	374	687	Resting	M	0.62
2009131-029	Upper Naukeag	YP	304	376	Resting	F	0.60
2009131-030	Upper Naukeag	YP	351	606	Partly Spent	M	0.83
2009131-031	Upper Naukeag	YP	320	459	Resting	F	0.79
2009131-032	Upper Naukeag	YP	315	443	Resting	M	0.28
2009131-033	Upper Naukeag	YP	483	1590	Partly Spent	M	0.61
2009131-034	Upper Naukeag	YP	324	485	Resting	F	0.76
2009131-035	Upper Naukeag	YP	425	1245	Resting	F	0.54
2009131-036	Upper Naukeag	YP	464	1368	Resting	F	0.53
2009131-037	Upper Naukeag	YP	451	1316	Resting	F	0.69
2009131-038	Upper Naukeag	YP	320	465	Resting	F	0.62
2009131-039	Upper Naukeag	YP	219	128	Resting	F	0.95
2009131-040	Upper Naukeag	YP	190	79	Spent	M	0.69
2009130-004	Upper Reservoir	LMB	177	59	Developing	F	0.58
2009130-005	Upper Reservoir	LMB	185	68	Immature	F	0.44
2009130-006	Upper Reservoir	YP	225	135	Resting	F	0.40
2009130-007	Upper Reservoir	YP	229	125	Resting	F	0.39
2009130-008	Upper Reservoir	YP	174	61	Resting	F	0.40
2009130-009	Upper Reservoir	YP	194	85	Resting	M	0.57

FISH MERCURY LONG-TERM MONITORING 2009 ANNUAL DATA REPORT

SAMPLE #	LAKE	SP	L	WT	S	STG	HG
2009130-010	Upper Reservoir	YP	259	204	Resting	F	0.27
2009130-011	Upper Reservoir	YP	183	66	Resting	F	0.43
2009130-012	Upper Reservoir	YP	227	128	Immature	F	0.28
2009130-013	Upper Reservoir	YP	173	60	Immature	F	0.27
2009130-014	Upper Reservoir	YP	182	65	Resting	M	0.48
2009130-015	Upper Reservoir	YP	209	116	Immature	F	0.22
2009130-016	Upper Reservoir	YP	195	81	Resting	M	0.80
2009130-017	Upper Reservoir	YP	167	55	Resting	F	0.57
2009130-018	Upper Reservoir	YP	211	106	Resting	F	0.49
2009130-019	Upper Reservoir	YP	185	73	Resting	F	0.71
2009130-020	Upper Reservoir	YP	166	56	Resting	F	0.54
2009130-021	Upper Reservoir	YP	160	50	Resting	F	0.50
2009130-022	Upper Reservoir	YP	165	55	Resting	F	0.50
2009130-023	Upper Reservoir	YP	165	47	Resting	F	0.33
2009130-024	Upper Reservoir	YP	193	73	Resting	F	0.31
2009130-025	Upper Reservoir	YP	186	71	Resting	F	0.44
2009130-026	Upper Reservoir	YP	185	78	Resting	F	0.30
2009130-027	Upper Reservoir	YP	185	74	Resting	M	0.45
2009130-028	Upper Reservoir	YP	170	58	Resting	F	0.28
2009130-029	Upper Reservoir	YP	173	55	Resting	F	0.23
2009130-030	Upper Reservoir	YP	241	148	Resting	F	0.29
2009130-031	Upper Reservoir	YP	185	70	Immature	F	0.17
2009130-032	Upper Reservoir	YP	186	68	Immature	M	0.28
2009130-033	Upper Reservoir	YP	190	82	Resting	F	0.27
2009130-034	Upper Reservoir	YP	206	90	Resting	F	0.31
2009130-035	Upper Reservoir	YP	182	60	Immature	M	0.24
2009123-004	Wickaboag Pond	LMB	228	140	Spent	M	0.44
2009123-006	Wickaboag Pond	LMB	184	70	Spent	M	0.50

FISH MERCURY LONG-TERM MONITORING 2009 ANNUAL DATA REPORT

SAMPLE #	LAKE	SP	L	WT	S	STG	HG
2009123-007	Wickaboag Pond	LMB	255	165	Spent	M	1.10
2009123-008	Wickaboag Pond	LMB	251	200	Spent	M	0.39
2009123-009	Wickaboag Pond	LMB	177	60	Partially Spent	F	0.55
2009123-010	Wickaboag Pond	LMB	182	78	Spent	M	0.94
2009123-011	Wickaboag Pond	LMB	285	260	Spent	F	0.43
2009123-012	Wickaboag Pond	LMB	292	320	Spent	F	0.62
2009123-013	Wickaboag Pond	LMB	193	180	Partially Spent	F	0.47
2009123-014	Wickaboag Pond	LMB	188	75	Spent	M	0.46
2009123-015	Wickaboag Pond	LMB	223	140	Spent	M	0.29
2009123-016	Wickaboag Pond	LMB	174	58	Spent	M	0.29
2009123-017	Wickaboag Pond	LMB	221	113	Spent	M	0.17
2009123-018	Wickaboag Pond	LMB	275	240	Immature	F	0.25
2009123-019	Wickaboag Pond	YP	228	115	Resting	F	0.25
2009123-020	Wickaboag Pond	YP	245	170	Resting	F	0.21
2009123-021	Wickaboag Pond	YP	190	70	Resting	F	0.15
2009123-022	Wickaboag Pond	YP	186	65	Resting	F	0.06
2009123-023	Wickaboag Pond	YP	163	48	Resting	F	0.09
2009123-024	Wickaboag Pond	YP	213	95	Resting	F	0.15
2009123-025	Wickaboag Pond	YP	170	50	Resting	F	0.11
2009123-026	Wickaboag Pond	YP	158	42	Resting	M	0.12
2009123-027	Wickaboag Pond	YP	160	47	Resting	F	0.16
2009123-028	Wickaboag Pond	YP	427	985	Resting	F	0.19
2009123-029	Wickaboag Pond	YP	476	1640	Resting	M	0.17
2009123-030	Wickaboag Pond	YP	371	785	Immature	F	0.066

FISH MERCURY LONG-TERM MONITORING 2009 ANNUAL DATA REPORT

SAMPLE #	LAKE	SP	L	WT	S	STG	HG
2009123-031	Wickaboag Pond	YP	402	920	Resting	M	0.15
2009123-032	Wickaboag Pond	YP	430	1200	Resting	F	0.13
2009123-033	Wickaboag Pond	YP	320	420	Resting	F	0.10
2009123-034	Wickaboag Pond	YP	320	490	Immature	M	0.09
2009123-035	Wickaboag Pond	YP	351	650	Resting	F	0.09
2009123-036	Wickaboag Pond	YP	376	710	Immature	F	0.06
2009123-037	Wickaboag Pond	YP	351	540	Resting	F	0.10
2009123-038	Wickaboag Pond	YP	372	675	Resting	F	0.04
2009123-039	Wickaboag Pond	YP	186	90	Resting	M	0.09
2009123-040	Wickaboag Pond	YP	345	540	Resting	F	0.11
2009123-041	Wickaboag Pond	YP	418	980	Resting	F	0.14
2009123-042	Wickaboag Pond	YP	331	540	Resting	M	0.10
2009123-043	Wickaboag Pond	YP	129	22	Immature	F	0.05
2009123-044	Wickaboag Pond	YP	132	24	Immature	F	0.05
2009123-045	Wickaboag Pond	YP	138	28	Immature	F	0.08
2009123-046	Wickaboag Pond	YP	136	25	Immature	F	0.07
2009123-047	Wickaboag Pond	YP	147	32	Immature	F	0.06
2009123-048	Wickaboag Pond	YP	145	30	Immature	F	0.08