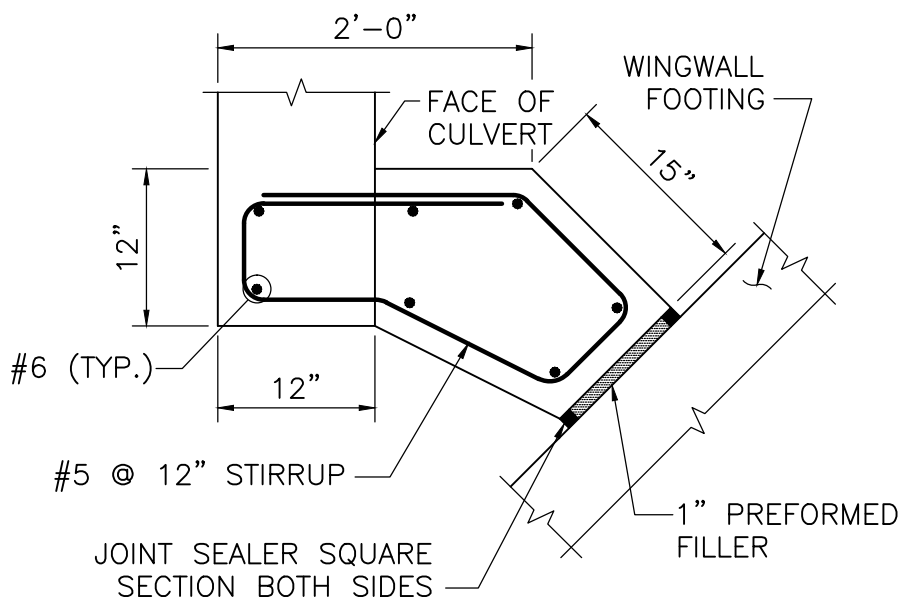


NOTES:

1. THE CONTRACTOR MAY SUBSTITUTE #5 DOWELS, 3'-0" LONG, FOR MECHANICAL REINFORCING BAR SPLICERS AND THREADED REBARS.
2. CULVERT REINFORCEMENT IS NOT SHOWN FOR CLARITY.

SECTION 1

SCALE: 1" = 1'-0"



NOTE:

CULVERT REINFORCEMENT IS NOT SHOWN FOR CLARITY.

SECTION 2

SCALE: 1" = 1'-0"



LRFD BRIDGE
MANUAL, PART II

FACE OF CULVERT DETAILS

CONCRETE BOX CULVERT DETAILS

DATE OF ISSUE
JUNE 2013

DRAWING NUMBER

11.3.5