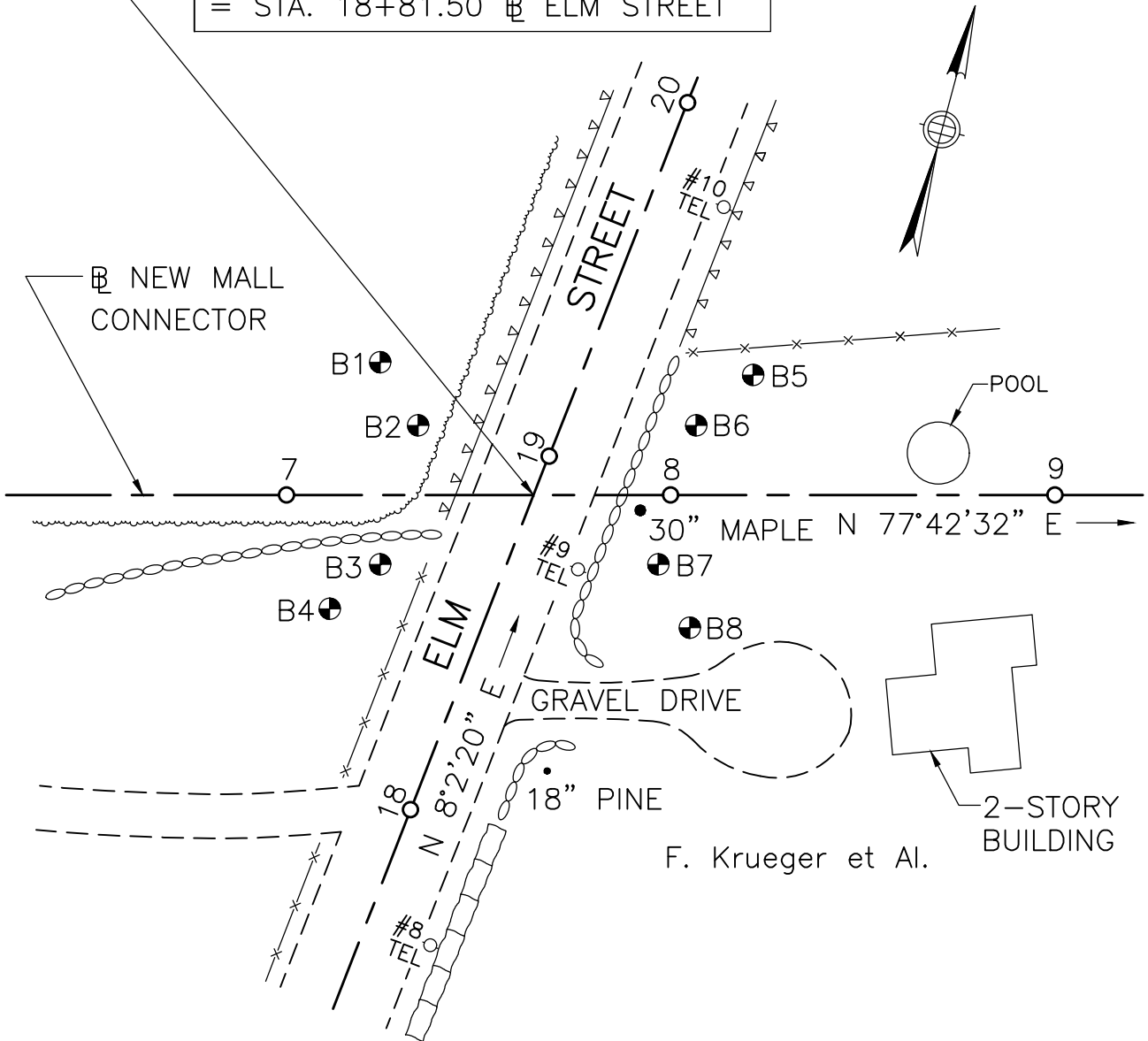


STA 7+62.05 @ NEW MALL CONN.  
= STA. 18+81.50 @ ELM STREET



BORING LOCATIONS (FEET)

BORING	NORTHING	EASTING	STATION	OFFSET	SURFACE EL.	H.B.E.
B1	2,927,742	589,413	7+23	35' LT	175.0	104.0
B2	2,927,725	589,422	7+34	18' LT	175.0	104.0
B3	2,927,691	589,412	7+23	18' RT	175.2	104.0
B4	2,927,680	589,400	7+10	30' RT	175.1	104.0
B5	2,927,738	589,506	8+19	31' LT	173.0	92.5
B6	2,927,726	589,492	8+05	18' LT	173.5	92.5
B7	2,927,691	589,482	7+95	18' RT	173.2	92.5
B8	2,927,675	589,490	8+03	34' RT	173.4	92.5