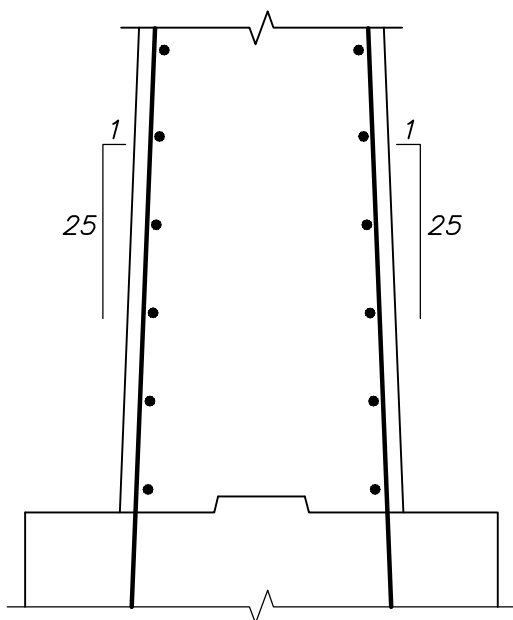


NOTE:

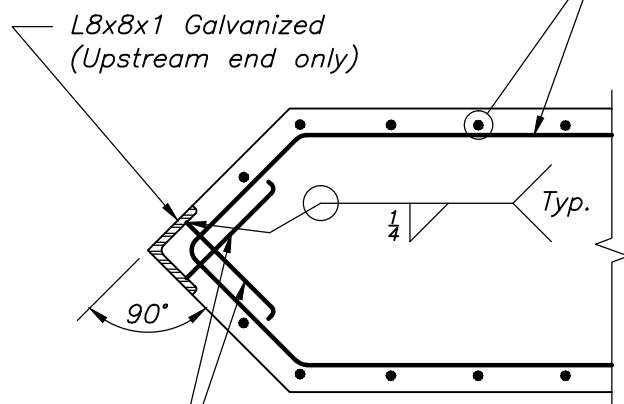
Upstream noses to have galvanized steel L8x8x1 from footing to 2'-0" above design flood water.

ELEVATION



SECTION

#X @ X" O.C. (provide Temperature and Shrinkage Reinforcement as per Dwg. No. 3.1.3)



$\frac{3}{8}$ " x $2\frac{3}{8}$ " x 16" strap anchors staggered 12" O.C. or $\frac{1}{2}$ " headed anchors, 5" long.

NOSE DETAIL