

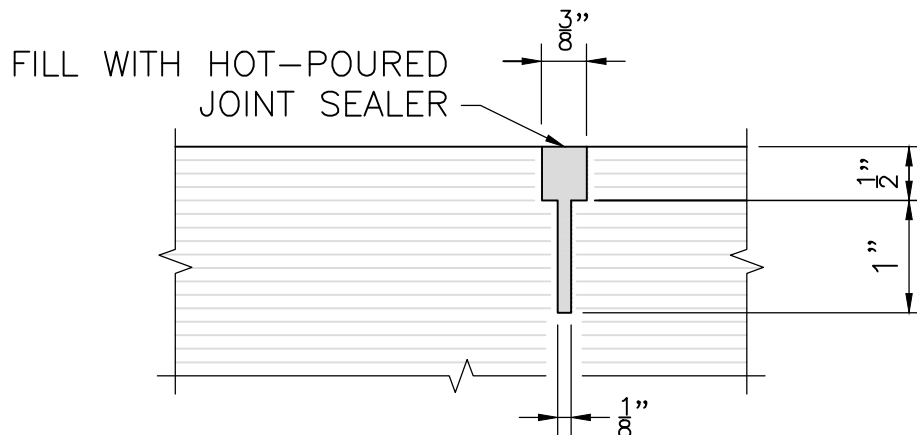
NOTE:

TUCK AND NAIL END OF MEMBRANE WATERPROOFING INTO A TAPERED $\frac{1}{2}$ " DEEP \times 2" HIGH POCKET. FILL POCKET WITH JOINT SEALER.

(Add this note to the other Details At Abutment Construction Notes)

**DETAILS AT ABUTMENT FOR
EXPOSED CONCRETE DECKS**

SCALE: 1" = 1'-0"



PAVEMENT SAWCUT DETAIL

NOT TO SCALE



LRFD BRIDGE
MANUAL, PART II

**EXPOSED DECK AND
PAVEMENT SAWCUT DETAILS**

END OF DECK DETAILS

DATE OF ISSUE
JUNE 2013

DRAWING NUMBER

3.7.12