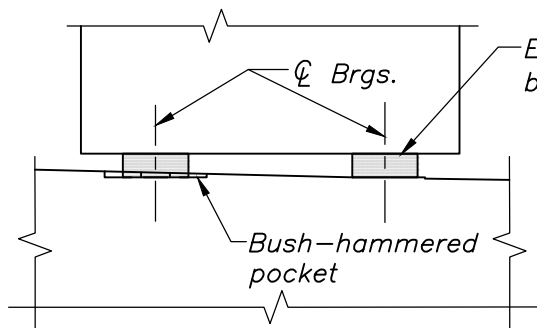
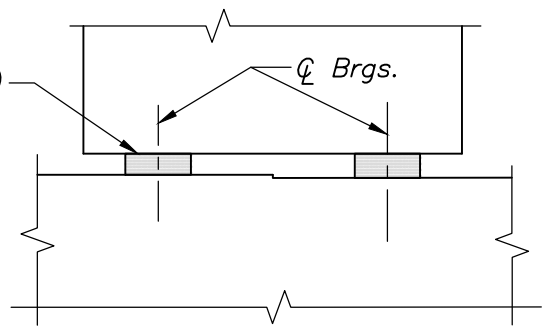


PLAN



SECTION 1



SECTION 2

ADJUSTMENTS FOR UNEVEN BEAM SEAT ELEVATIONS FOR PRESTRESSED BEAM BRIDGES

NOT TO SCALE

NOTE:

The above adjustment details shall be used in case of uneven (non-parallel) bridge seat cross-slopes and/or longitudinal slopes between pairs of bearings, which may be a result of the bridge skew, profile grade, horizontal and/or vertical curvature, change of the cross-slope along the span length, etc. Use shallower slope and either bush-hammer bridge seat under one of the bearings or step the bridge seat if the change in elevation between bearings is greater than $\frac{3}{8}$ ", so that cross-slopes between bearings at both substructures and longitudinal slopes between pairs of bearings match.



LRFD BRIDGE
MANUAL, PART II

ADJUSTMENTS FOR UNEVEN BEAM SEAT ELEVATIONS

BRIDGE SEAT ELEVATIONS

DATE OF ISSUE
JUNE 2013

DRAWING NUMBER

3.9.4