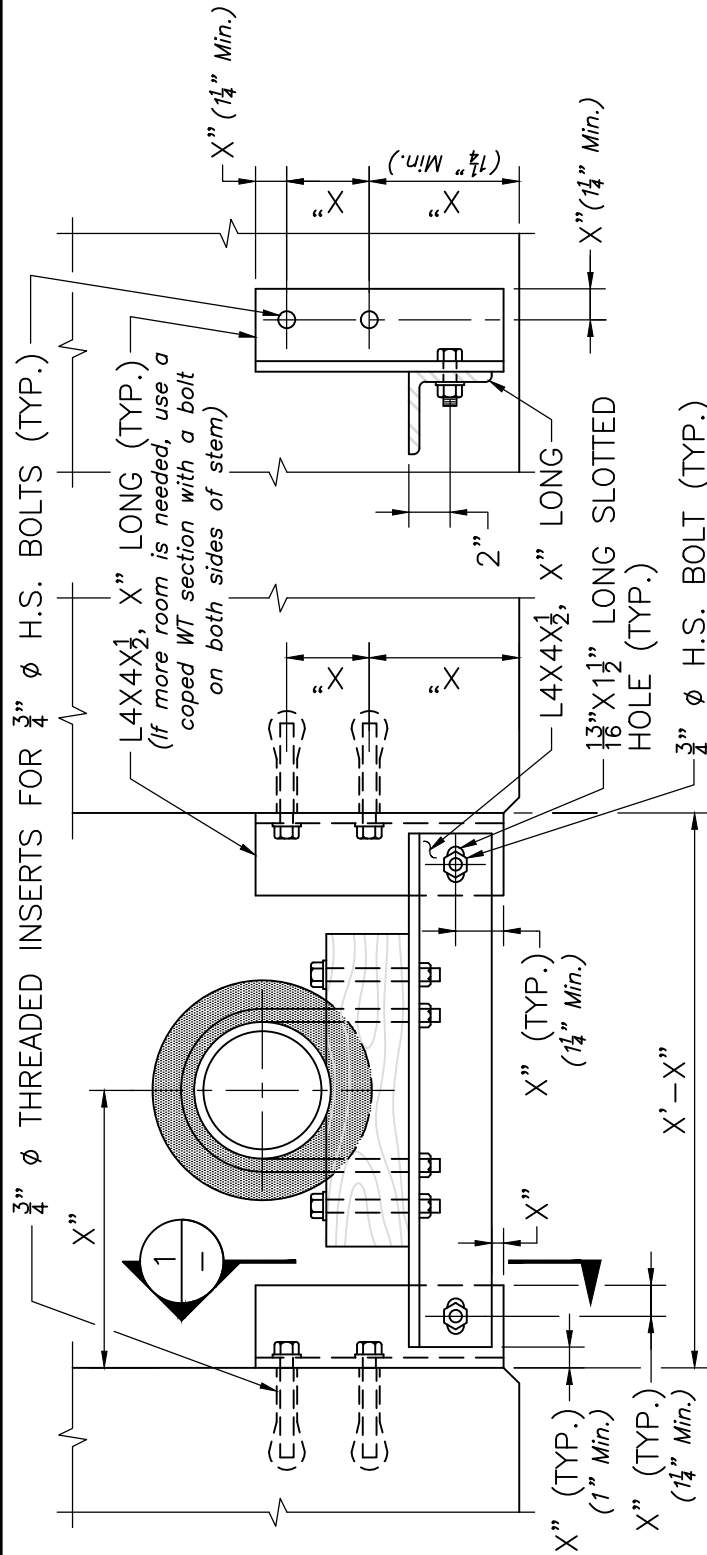


TYPICAL UTILITY  
 SUPPORT DETAILS

SIDEWALK AND SAFETY CURB DETAILS

DATE OF ISSUE  
 JUNE 2013

DRAWING NUMBER  
**4.3.7**



ELEVATION

SECTION 1

NOTES:

1. ALL STRUCTURAL STEEL SHALL CONFORM TO AASHTO M 270 GRADE 36.
2. ALL STRUCTURAL STEEL AND FASTENERS SHALL BE GALVANIZED IN ACCORDANCE WITH AASHTO M 111 AND M 232.
3. THE  $\frac{3}{4}$ "  $\phi$  THREADED INSERTS FOR  $\frac{3}{4}$ "  $\phi$  BOLTS SHALL BE CAST INTO THE PRECAST BEAMS BY THE FABRICATOR AND SHALL PROVIDE A MINIMUM NOMINAL TENSILE RESISTANCE OF 6.0 KIPS AND A MINIMUM NOMINAL SHEAR RESISTANCE OF 6.0 KIPS IN 3000 PSI CONCRETE.

NOTES:

1. The limits of the utility support detailed above are: Maximum total utility weight is 250 plf; Maximum utility bay width is 4'-0"; Maximum support spacing is 10'-0". If any of these limits is exceeded, the Designer shall size the members accordingly.
2. Position the bolts such that they meet the standard edge distances and construction requirements and that the inserts do not interfere with strands and reinforcing bars.

UTILITY SUPPORT DETAILS

SCALE:  $1\frac{1}{2}" = 1'-0"$