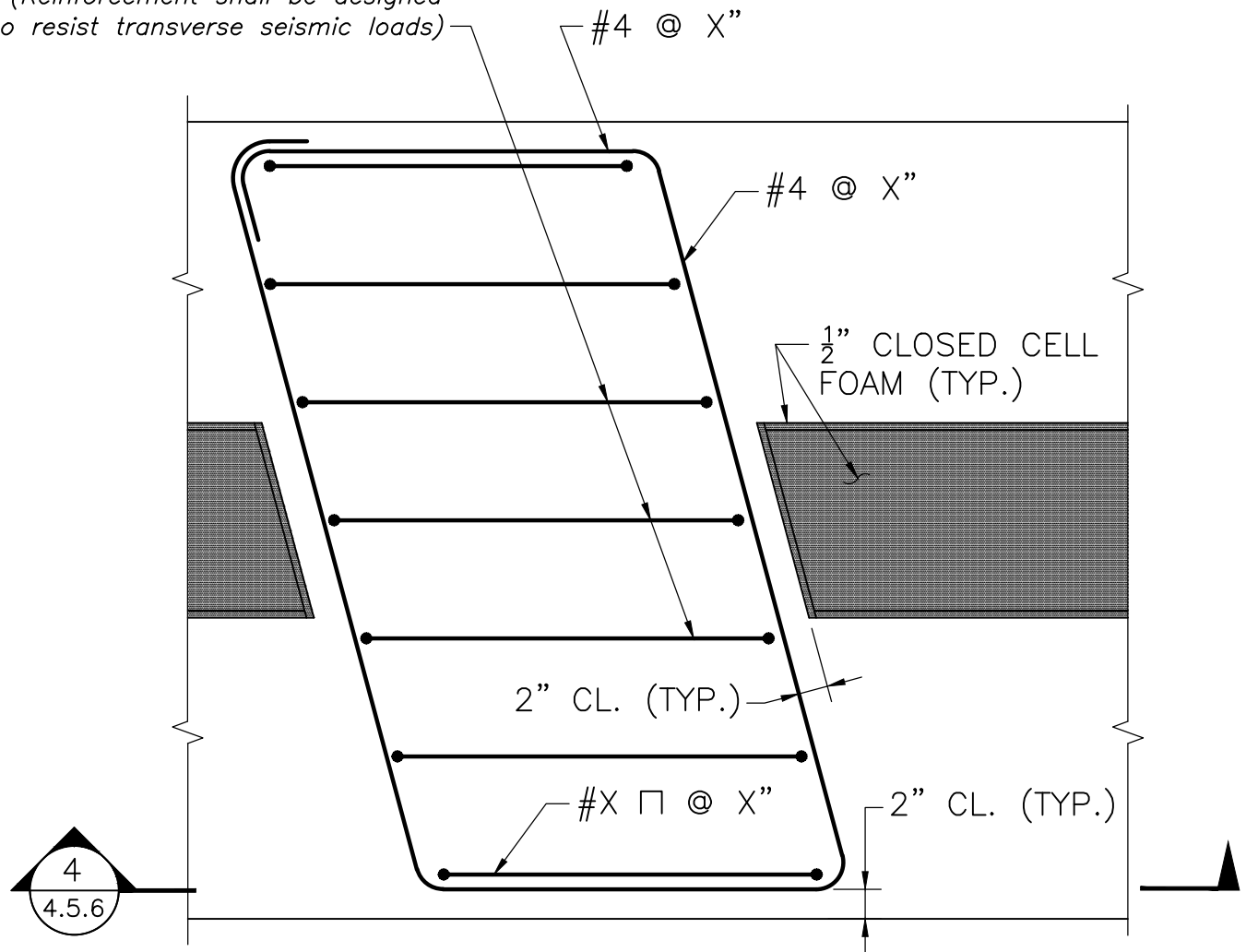


(Reinforcement shall be designed to resist transverse seismic loads)



SECTION 3

SCALE: 1" = 1'-0"

NOTES:

1. Only the transverse seismic reinforcement is shown. The rest of the pier reinforcement has been omitted for clarity.
2. The Designer shall verify that the reinforcement shown does not interfere with or duplicate the normal pier reinforcement and adjust as necessary.