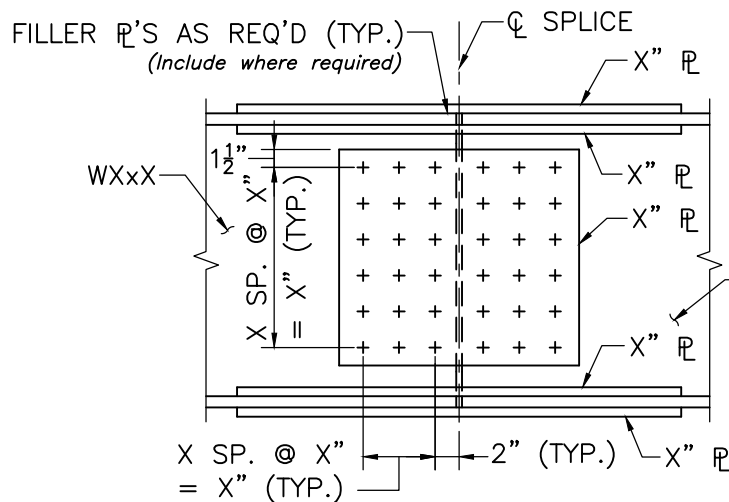
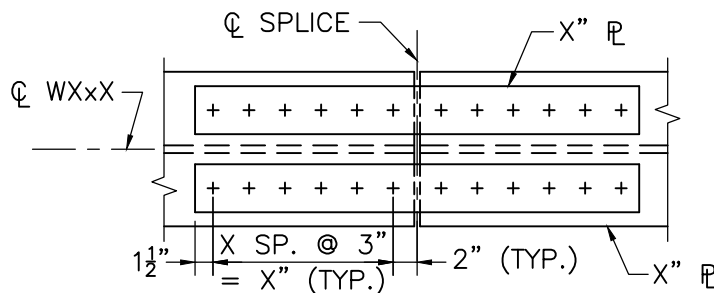


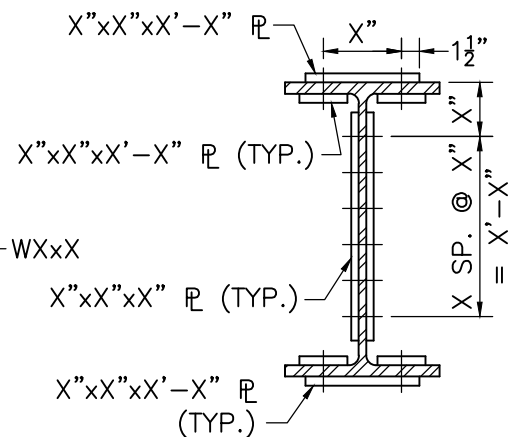
TOP FLANGE



ELEVATION



BOTTOM FLANGE



SECTION

NOTES:

1. BOLTED FIELD SPLICES SHALL BE CONSIDERED SLIP-CRITICAL CONNECTIONS WITH CLASS B FAYING SURFACES. (*Change to Class C for galvanized surfaces.*)
2. + DENOTES $\frac{7}{8}$ " ϕ ASTM A325 HIGH STRENGTH BOLT IN $\frac{15}{16}$ " ϕ HOLE.
3. THICKNESS DIFFERENCES OF $\frac{1}{16}$ " OR LESS DO NOT REQUIRE FILLER PLATES. FILLER PLATES SHALL CONFORM TO AASHTO M 270 GRADE 50W OR ASTM A606. (*Include where required.*)
4. ONE ROW OF STUD SHEAR CONNECTORS SHALL BE PLACED ALONG THE CENTERLINE OF THE TOP FLANGE SPLICE PLATE.

BOLTED FIELD SPLICE DETAILS

SCALE: 1" = 1'-0"