

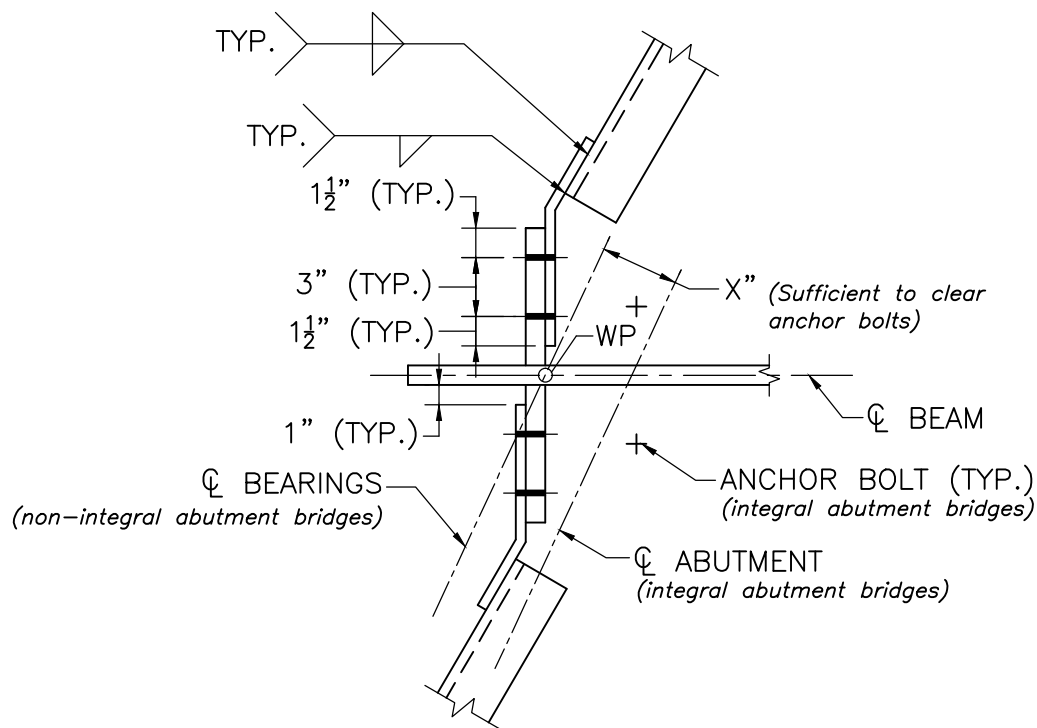
**NOTE:**

FLANGE OF CHANNEL MAY BE CLIPPED  
TO AVOID INTERFERENCE WITH WEB.

**SKEWS  $\leq 20^\circ$**

**SECTION 2**

SCALE:  $1\frac{1}{2}'' = 1'-0''$



**SKEWS  $> 20^\circ$**

**SECTION 2**

SCALE:  $1\frac{1}{2}'' = 1'-0''$



LRFD BRIDGE  
MANUAL, PART II

END DIAPHRAGM DETAILS  
SECTION 2  
STRINGERS

DATE OF ISSUE  
JUNE 2013

DRAWING NUMBER

**5.1.5**