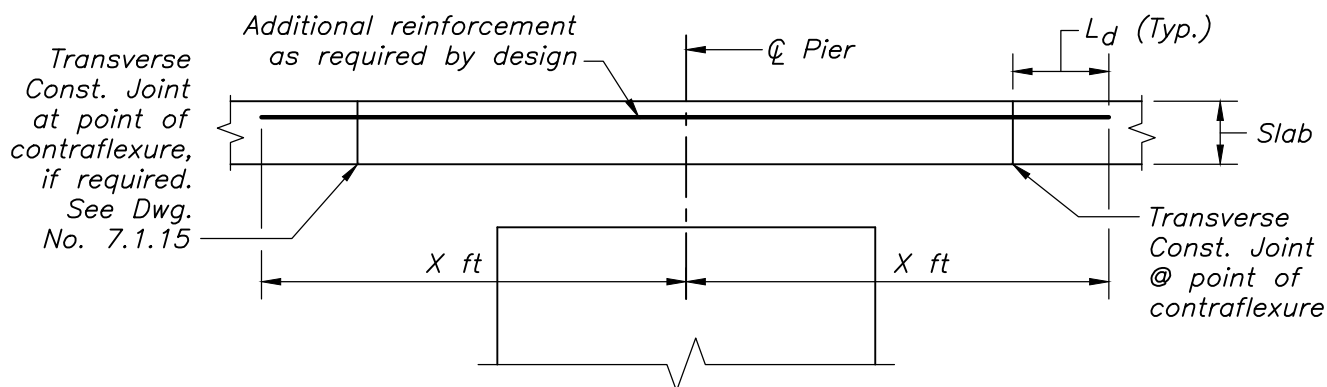


PLAN AT ACUTE CORNER

NOTES:

SCALE: $\frac{3}{8}" = 1'-0"$

1. Provide detail shown above, modified as required, on bridges with skew angles greater than 35°.
2. Width of barrier or 2'-0" at sidewalk.



SECTION AT PIER

NOT TO SCALE

NOTE:

Deck slabs of Continuous Spans over piers shall have additional reinforcement placed in the top of the slab. Details shall be shown on the Construction Drawings. If bars larger than #5 are used for this reinforcement, the Designer shall check the clearance between the reinforcing mats.



LRFD BRIDGE
MANUAL, PART II

REINFORCEMENT DETAILS

GENERAL DECK DETAILS

DATE OF ISSUE
JUNE 2013

DRAWING NUMBER

7.1.11