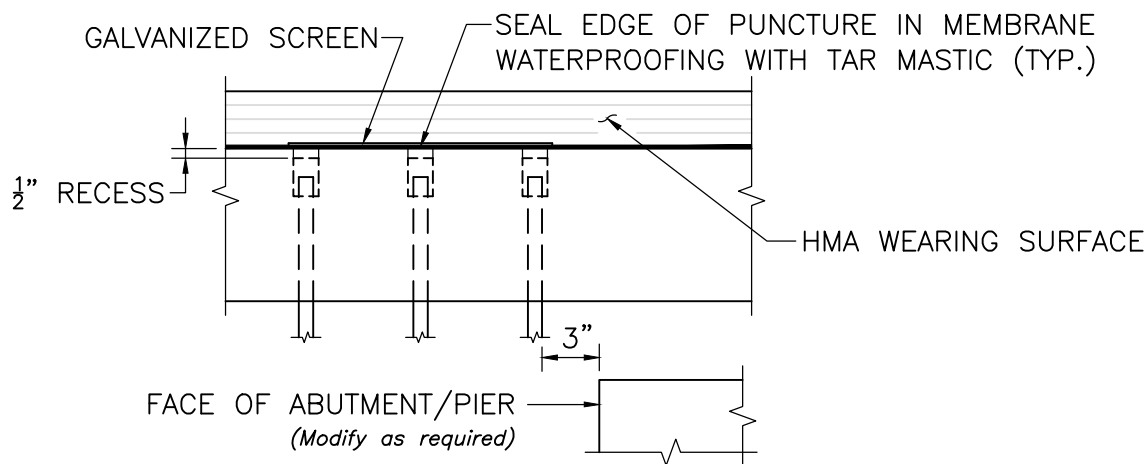
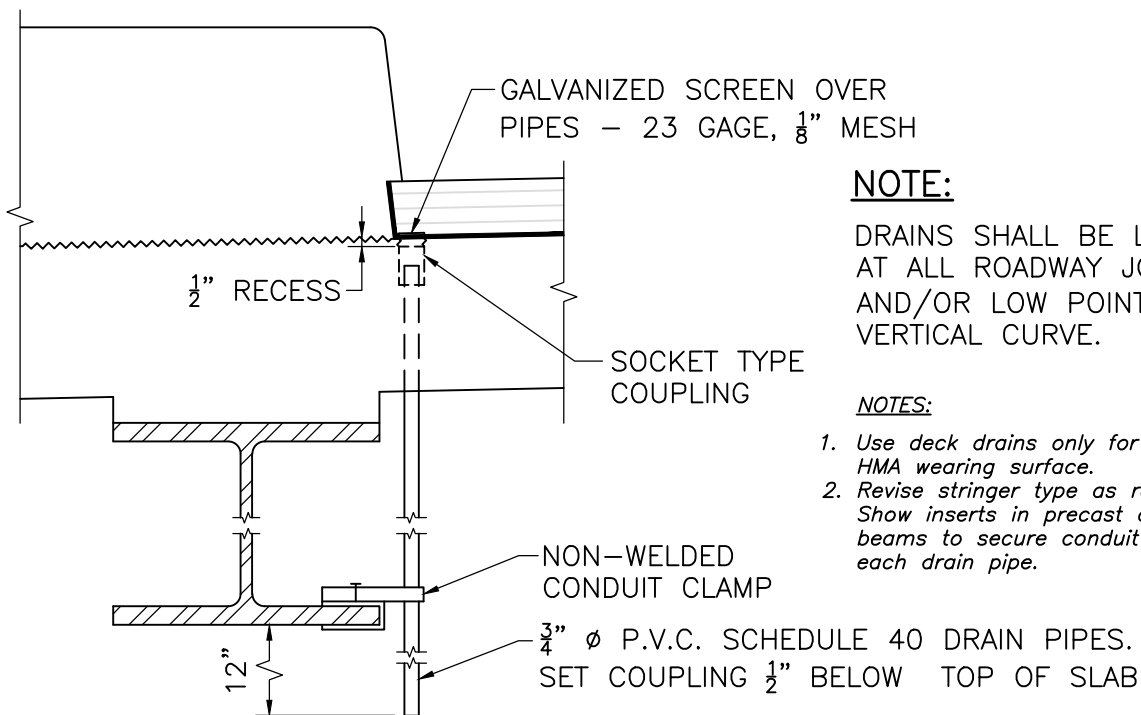


DECK PLAN



SECTION 1



SECTION 2

DECK DRAIN PIPES

SCALE: $1\frac{1}{2}" = 1'-0"$

NOTE:

DRAINS SHALL BE LOCATED AT ALL ROADWAY JOINTS AND/OR LOW POINT OF VERTICAL CURVE.

NOTES:

1. Use deck drains only for bridges with HMA wearing surface.
2. Revise stringer type as required. Show inserts in precast concrete beams to secure conduit clamp at each drain pipe.



LRFD BRIDGE
MANUAL, PART II

DECK DRAIN PIPES

DRAINAGE DETAILS

DATE OF ISSUE
JUNE 2013

DRAWING NUMBER

7.3.1