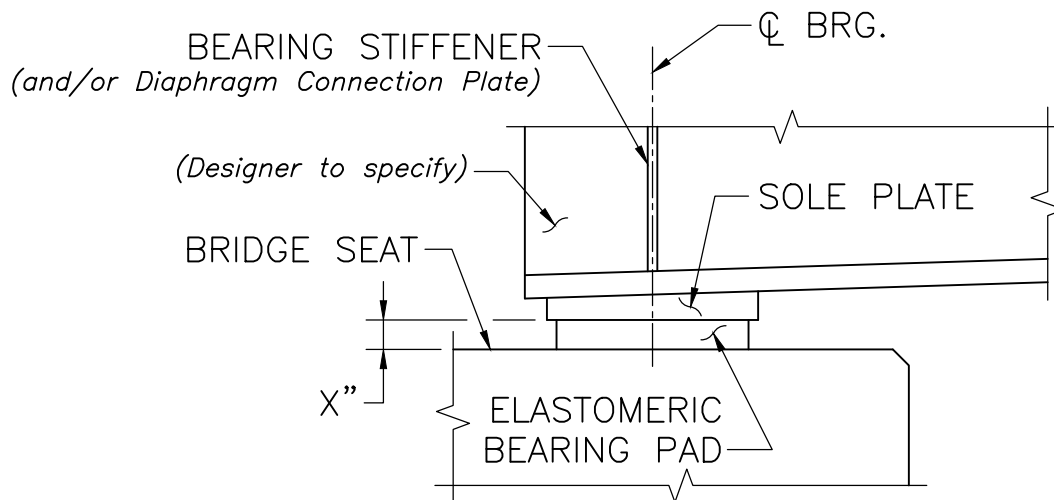


(*) – WELDS SHALL TERMINATE $\frac{1}{4}$ " FROM EDGE OF PLATE.

SECTION 1

SCALE: 1" = 1'-0"



ELEVATION

SCALE: 1" = 1'-0"

NOTES:

For Designer Notes see Dwg. No. 8.1.2.

For Construction Notes see Dwg. No. 8.1.6.



LRFD BRIDGE
MANUAL, PART II

STANDARD BEARING ASSEMBLY SECTION AND ELEVATION

ELASTOMERIC BEARINGS – STEEL BEAMS

DATE OF ISSUE
JUNE 2013

DRAWING NUMBER

8.1.3