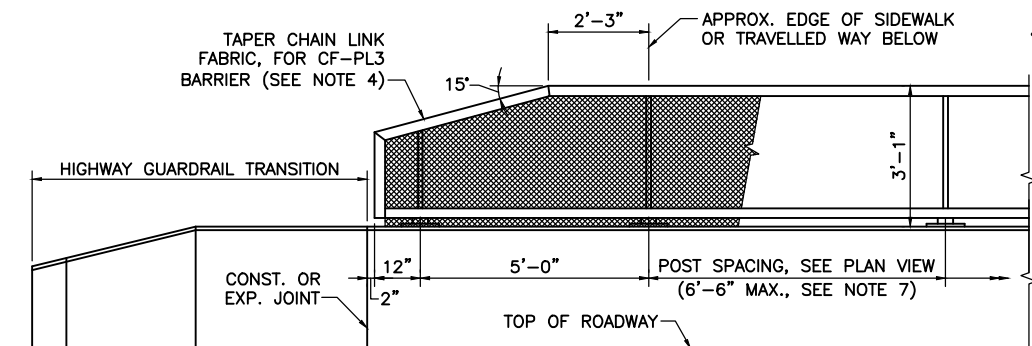
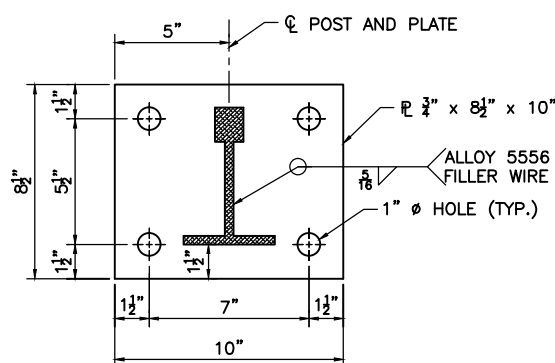


CITY/TOWN STREET/ROUTE # OR NAME			
STATE	FED. AID PROJ. NO.	SHEET NO.	TOTAL SHEETS
MA	-	6	X
PROJECT FILE NO. XXXXXX			

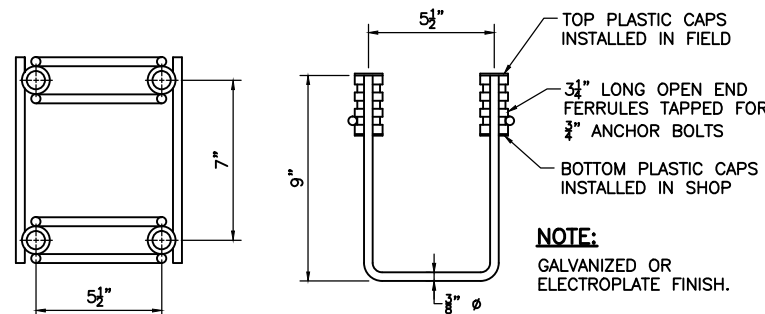


SNOW FENCE ELEVATION FOR CF-PL3 BARRIERS
SCALE: 1/2" = 1'-0"

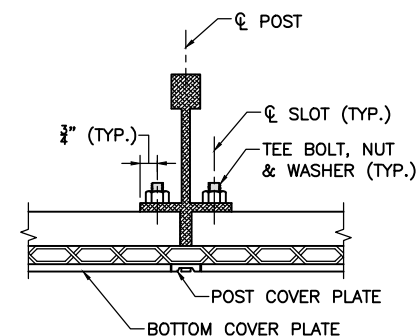
SNOW FENCE ELEVATION FOR CP-PL2 AND CF-PL2 BARRIERS
SCALE: 1/2" = 1'-0"



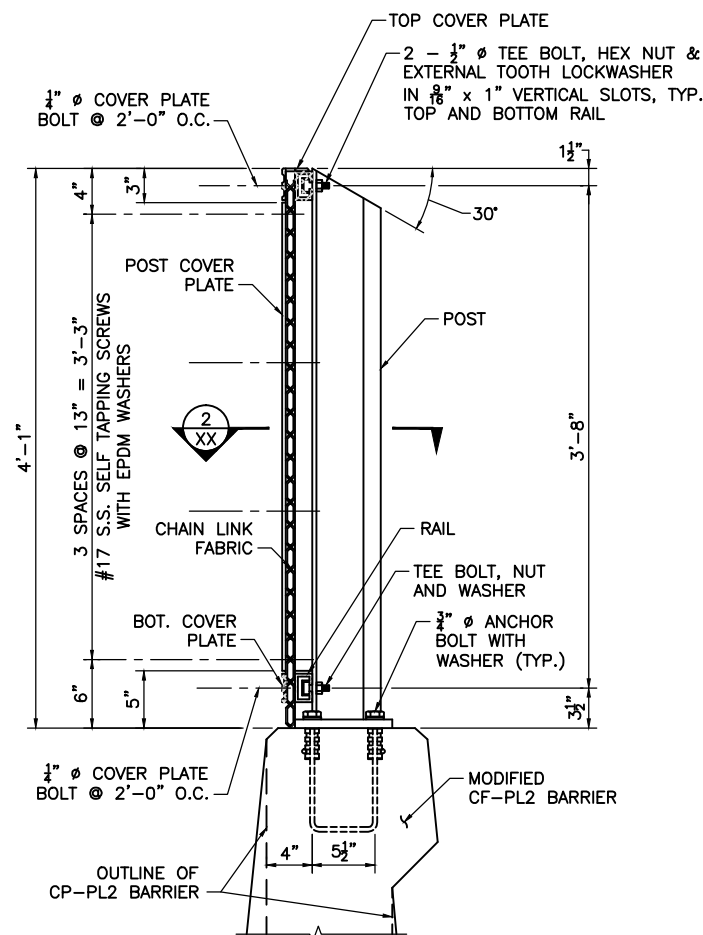
BASE PLATE DETAIL
SCALE: 3" = 1'-0"



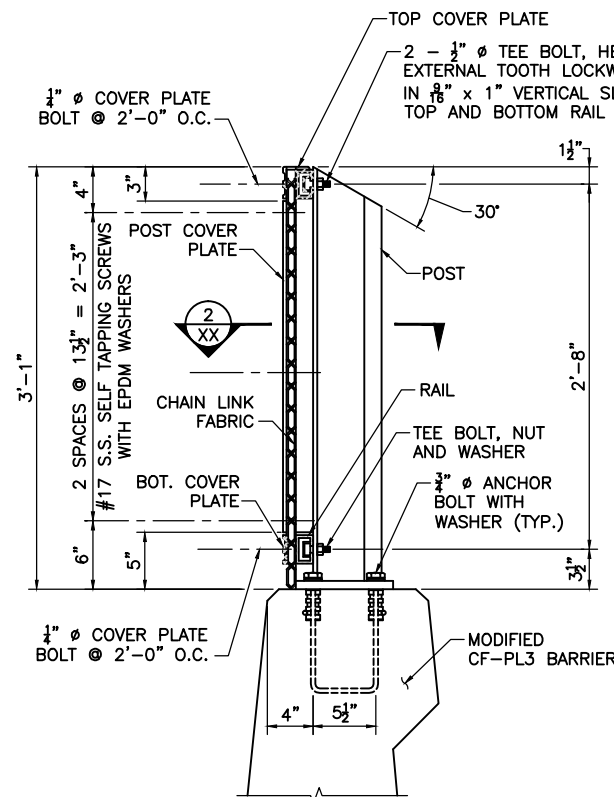
ANCHOR CAGE
SCALE: 3" = 1'-0"



SECTION 2
SCALE: 3" = 1'-0"



**SECTION 1
CP-PL2 AND CF-PL2 BARRIERS**
SCALE: 1 1/2" = 1'-0"



**SECTION 1
CF-PL3 BARRIER**
SCALE: 1 1/2" = 1'-0"

GENERAL NOTES:

- RAILS SHALL BE CONTINUOUS OVER A MINIMUM OF FOUR POSTS, IF POSSIBLE.
- RAILS SHALL HAVE AN EXPANSION JOINT IN THE PANEL OVER A BRIDGE EXPANSION JOINT, IF ANY, AND AT 30 FOOT MAXIMUM SPACING ELSEWHERE.
- BOTTOM OF POST BASE PLATE TO BE SET ON A 1/8" MOLDED FABRIC BEARING PAD (M9.16.2). THE THICKNESS OF THE PAD SHALL BE IGNORED BY THE DETAILER.
- THE CHAIN LINK FABRIC SHALL BE SECURED BY KNUCKLING TOGETHER THE CUT ENDS OF THE FABRIC WIRE IN A MANNER SIMILAR TO THE ORIGINALLY MANUFACTURED END.
- WHERE THE R.O.W. FENCE MEET THE SCREEN, USE THE SQUARE END TO HIGHWAY GUARDRAIL TRANSITION DETAIL.
- THE SCREEN END TREATMENT TO BE USED (SQUARE OR TAPERED) IS SPECIFIED ELSEWHERE ON THE CONSTRUCTION DRAWINGS.
- POST SPACING SHALL BE UNIFORM BETWEEN TAPERED ENDS.
- SET POSTS PERPENDICULAR TO GRADE FOR GRADES UP TO 1.5%. SET POSTS PLUMB FOR GRADES GREATER THAN 1.5%.

FINISHES:

- POSTS, RAILS, COVER PLATES AND SPLICE PLATES SHALL RECEIVE A DARK BRONZE ANODIZED FINISH.
- CHAIN LINK FABRIC SHALL RECEIVE A 4±1 MIL POLYESTER POWDER COAT FINISH. THE COLOR SHALL BE DARK BRONZE TO MATCH COLOR OF ANODIZED ALUMINUM FRAMEWORK.
- #17 SELF TAPPING SCREWS AND 1/4" Ø COVER PLATE BOLTS TO BE COLORED TO MATCH THE ANODIZED EXTRUSIONS.

MATERIALS:

EXTRUSIONS & PLATES _____ ASTM B 221, ALLOY 6061-T6
CHAIN LINK FABRIC _____ AASHTO M 181 TYPE III (ALLOY 6061-T89 OR T94)
SELF TAPPING SCREWS _____ TYPE 304 STAINLESS STEEL WITH 1/8" THICK EPDM (ETHYLENE PROPYLENE DIENE MONOMER) WASHERS
ANCHOR BOLTS _____ AASHTO M 164 GALVANIZED (ROTATION CAPACITY TEST NOT REQUIRED)
TEE BOLTS _____ ASTM A 307 GALVANIZED OR TYPE 304 STAINLESS STEEL
COVER PLATE BOLTS _____ TYPE 304 STAINLESS STEEL WITH OVERSIZED STAINLESS WASHER AND STAINLESS NUT WITH NYLON INSERT

**SNOW FENCE FOR CP-PL2 AND CF BARRIERS
(SHEET 1 OF 2)**

MONTH DD, YYYY	ISSUED FOR CONSTRUCTION
DATE	DESCRIPTION
USE ONLY PRINTS OF LATEST DATE	

SHEET XX OF XX SHEETS BRIDGE NO. X-XX-XXX (XXX)

Date: June 2013