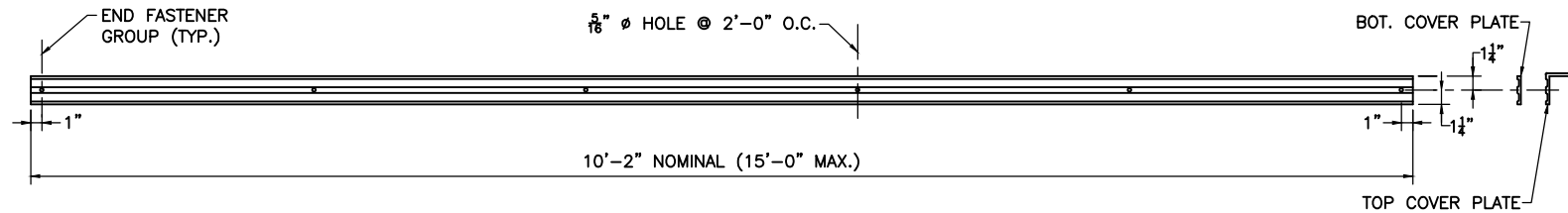


STATE	FED. AID PROJ. NO.	SHEET NO.	TOTAL SHEETS
MA	-	6	X
PROJECT FILE NO. XXXXXX			

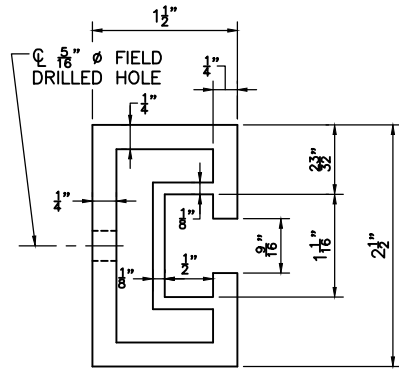


**TOP AND BOTTOM COVER PLATE**

SCALE: 1 1/2" = 1'-0"

**COVER PLATE NOTES:**

- COVER PLATES MAY BE CONTINUOUS OVER A RAIL EXPANSION JOINT SPlice. COVER PLATES SHALL BE FIELD CUT AS REQUIRED TO CLEAR THE EXPANSION JOINT. SEE DETAIL AT EXPANSION JOINT.
- FIELD DRILL 5/16" Ø HOLE 1" FROM THE FIELD CUT END OF A COVER PLATE, UNLESS THERE IS AN EXISTING HOLE WITHIN 6" FROM THE COVER PLATE END.
- FIELD PAINT THE FIELD CUT ENDS OF THE COVER PLATES TO MATCH THE ANODIZED COLOR.

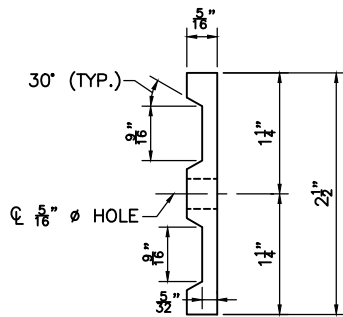


**NOTE:**

OTHER CONFIGURATIONS OF THE INTERNAL WALLS OF THE RAIL EXTRUSION MAY BE SUBMITTED FOR APPROVAL.

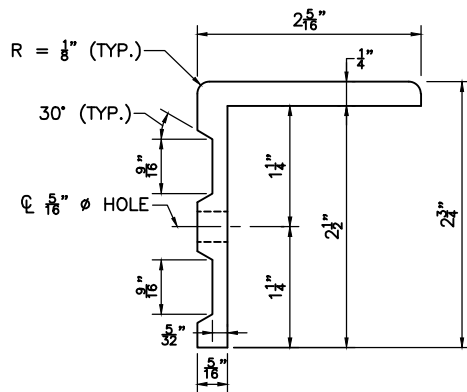
**RAIL EXTRUSION**

FULL SIZE



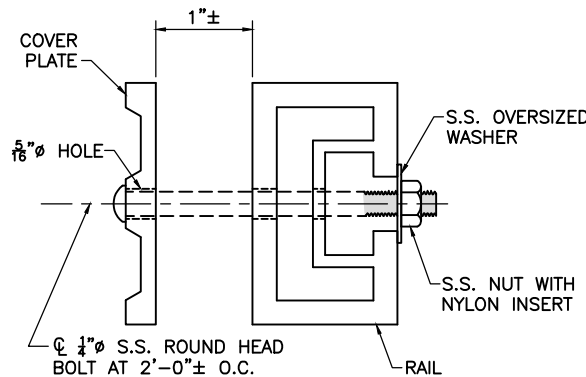
**BOTTOM COVER PLATE EXTRUSION**

FULL SIZE



**TOP COVER PLATE EXTRUSION**

FULL SIZE

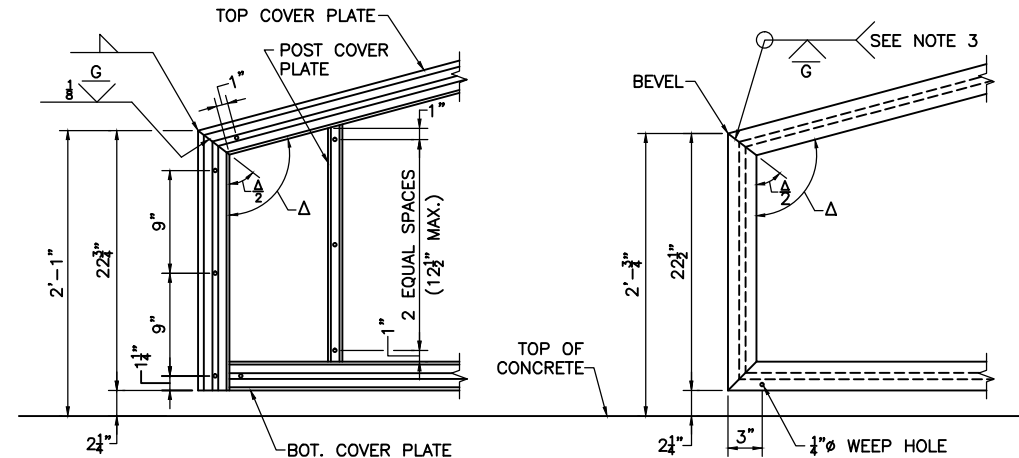


**NOTE:**

BOLTS SHALL BE TYPE 304 WITH A DRIVE HEAD TO BE COLORED TO MATCH ANODIZING.

**RAIL & COVER PLATE DETAIL**

FULL SIZE



**COVER PLATE DETAILS**

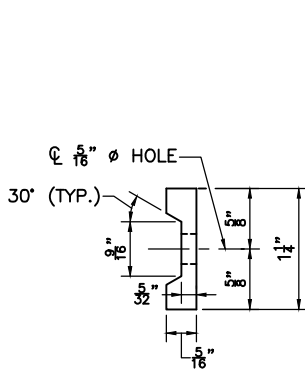
**RAIL DETAILS**

**NOTES:**

- WELDING OF TOP COVER PLATE AND RAILS OF NON-TAPERED END IS SIMILAR.
- WELDS AND MITERING TYPICAL FOR ALL ANGLED CORNERS.
- WELD TYPICAL FOR TOP AND BOTTOM END CORNERS OF RAIL. INTERRUPT WELD AT SLOT IN BACK OF RAIL.

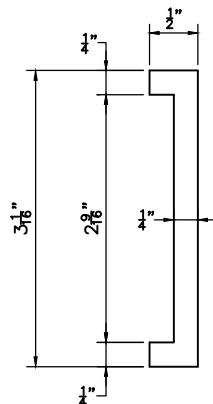
**TAPERED END DETAILS**

SCALE: 1 1/2" = 1'-0"



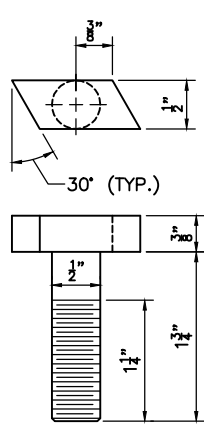
**POST COVER PLATE EXTRUSION**

FULL SIZE



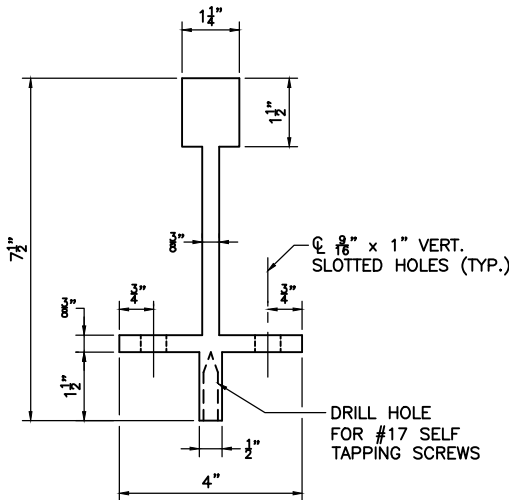
**SPLICE PLATE EXTRUSION**

FULL SIZE



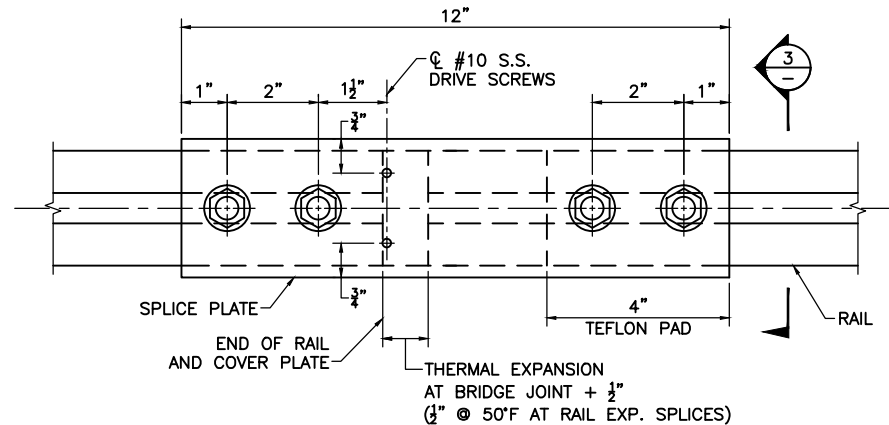
**TEE BOLT**

FULL SIZE



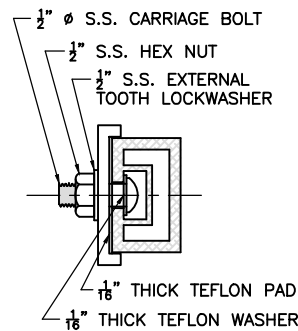
**POST EXTRUSION**

SCALE: 6" = 1'-0"



**DETAIL AT RAIL EXPANSION JOINT SPlice**

SCALE: 6" = 1'-0"



**SECTION 3**

SCALE: 6" = 1'-0"

MONTH DD, YYYY	ISSUED FOR CONSTRUCTION
DATE	DESCRIPTION
USE ONLY PRINTS OF LATEST DATE	