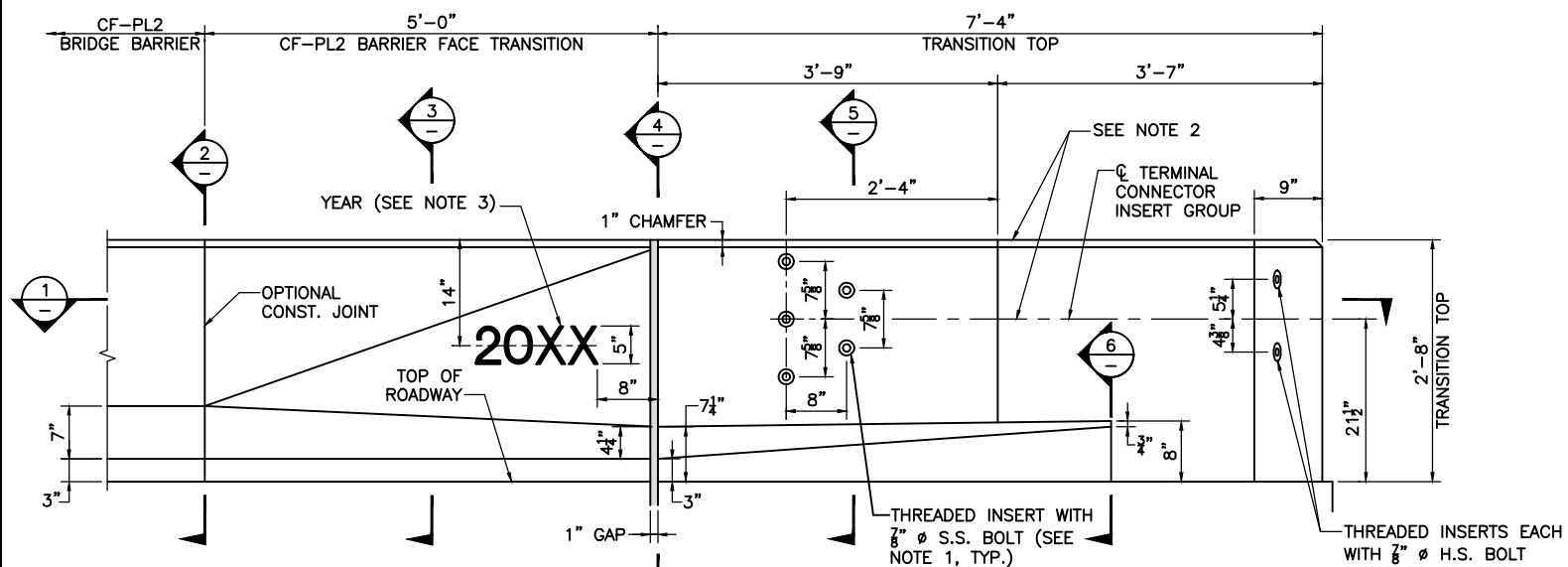
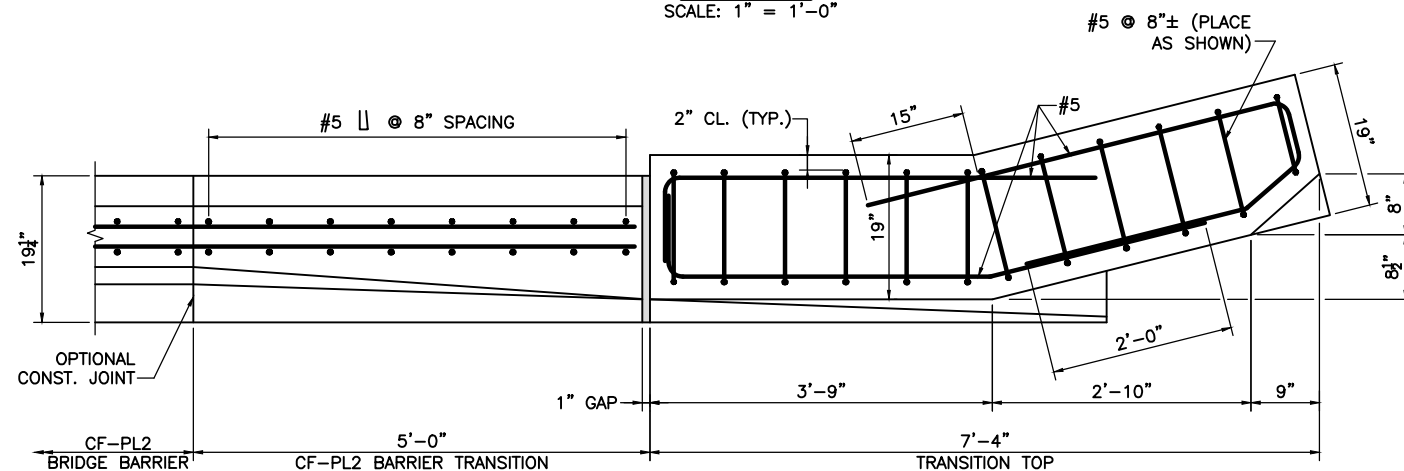


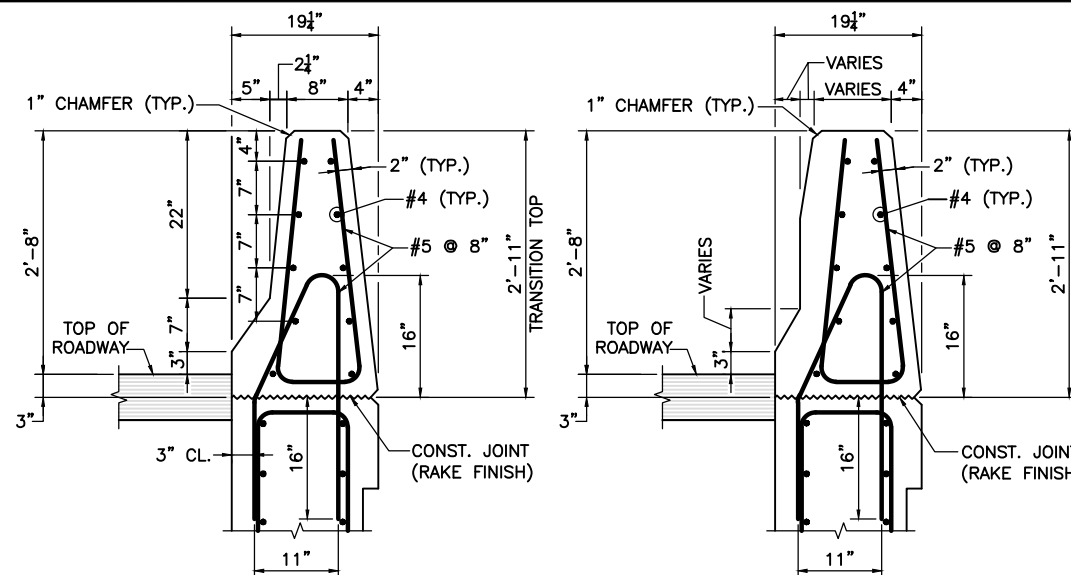
PLAN
SCALE: 1" = 1'-0"



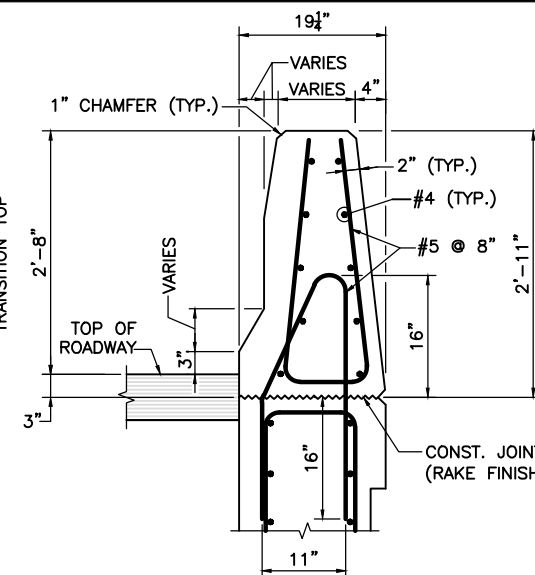
ELEVATION
SCALE: 1" = 1'-0"



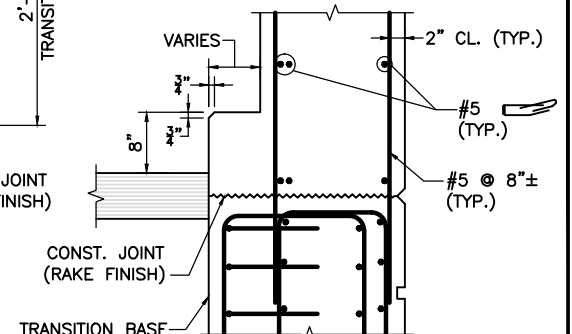
SECTION 1
SCALE: 1" = 1'-0"



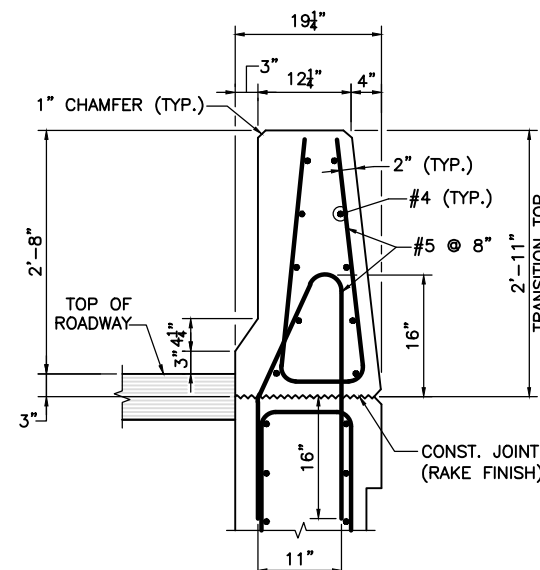
SECTION 2
TYPICAL CF-PL2 BRIDGE BARRIER



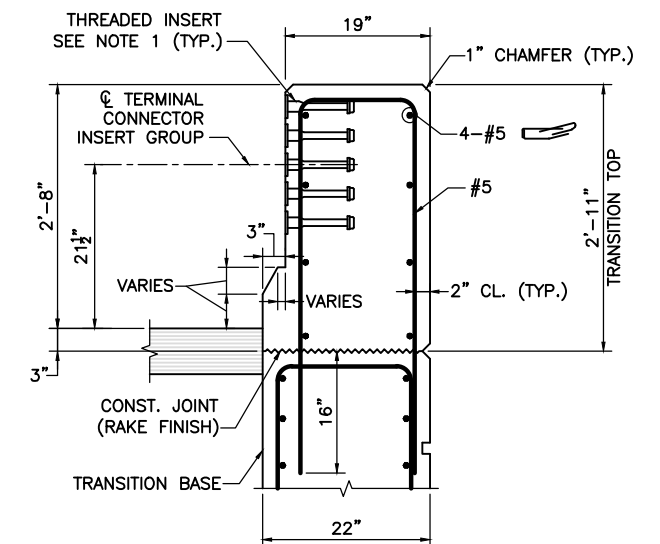
SECTION 3
SCALE: 1" = 1'-0"



SECTION 6
SCALE: 1" = 1'-0"



SECTION 4
SCALE: 1" = 1'-0"



SECTION 5
SCALE: 1" = 1'-0"

NOTES:

1. THREADED INSERTS SHALL BE PREQUALIFIED BY THE MANUFACTURER AS BEING CAPABLE OF DEVELOPING A NOMINAL SHEAR RESISTANCE OF 20 KIPS PER $\frac{3}{4}$ " ϕ S.S. BOLT. S.S. BOLTS SHALL BE $\frac{7}{8}$ " ϕ x $1\frac{1}{2}$ " LONG FULLY THREADED AISI TYPE 304N STAINLESS STEEL. INSERTS FOR $\frac{3}{4}$ " S.S. BOLTS SHALL BE GALVANIZED AND CAST INTO THE TRANSITION.
2. FOR AN APPROACH GRADE UP TO 3%, THE TRANSITION MAY BE CAST SQUARE AND SET PLUMB WITH THE MINIMUM EMBEDMENT DEPTH SHOWN. THE TERMINAL CONNECTOR INSERT GROUP SHALL BE SQUARE TO THE POST.

FOR AN APPROACH GRADE IN EXCESS OF 3%, THE TRANSITION TOP AND THE TOP OF THE BRIDGE BARRIERS SHALL FOLLOW THE APPROACH GRADE. THE HEIGHT OF THE TRANSITION TOP SHALL VARY PROVIDED THAT THE MINIMUM DIMENSIONS SHOWN ON THE CONSTRUCTION DRAWINGS ARE MET. THE BOTTOM OF THE TRANSITION BASE SHALL BE SET LEVEL WITH THE MINIMUM EMBEDMENT DEPTH SHOWN. THE TERMINAL CONNECTOR INSERT GROUP SHALL BE SLOPED TO FOLLOW THE APPROACH GRADE.
3. USE LATEST CONTRACT COMPLETION YEAR IN EFFECT WHEN THE FIRST GUARDRAIL TRANSITION IS CAST. USE THIS YEAR FOR ALL GUARDRAIL TRANSITIONS.
4. ALL CONCRETE FOR THE PRECAST HIGHWAY GUARDRAIL TRANSITION SHALL BE 5000 PSI, $\frac{3}{4}$ ", 685 HP CEMENT CONCRETE.
5. LIFTING DEVICES (NOT SHOWN), INCLUDING THEIR NUMBER AND LOCATION, SHALL BE DESIGNED AND DETAILED BY THE PRECASTER. THEY SHALL BE GALVANIZED AND SHALL BE PLACED AND RECESSED IN POCKETS TO PROVIDE $1\frac{1}{2}$ " CLEAR COVER TO THE FACE OF THE TRANSITION CONCRETE. THESE DEVICES SHALL BE CLEARLY SHOWN ON THE SHOP DRAWINGS ALONG WITH ALL SUPPORTING CALCULATIONS AND/OR CATALOG CUTS. ONCE THE PRECAST TRANSITION IS SET IN PLACE, THE LIFTING DEVICE POCKETS SHALL BE FILLED WITH A NON-SHRINK GROUT THAT MATCHES THE COLOR OF THE TRANSITION CONCRETE WHEN CURED AND THE FILLED POCKETS SHALL BE RUBBED WITH A CORUNDUM STONE TO BLEND OUT THE JOINTS.

| | |
|--------------------------------|-------------------------|
| MONTH DD, YYYY | ISSUED FOR CONSTRUCTION |
| DATE | DESCRIPTION |
| USE ONLY PRINTS OF LATEST DATE | |

TOP OF PRECAST HIGHWAY GUARDRAIL TRANSITION FOR CF-PL2 BARRIER

SHEET XX OF XX SHEETS BRIDGE NO. X-XX-XXX (XXX)

Date: June 2013