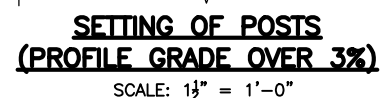
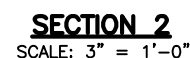


1. RAILS SHALL BE CONTINUOUS OVER A MINIMUM OF FOUR POSTS, IF POSSIBLE.
2. RAILS SHALL HAVE AN EXPANSION JOINT IN THE PANEL OVER A BRIDGE EXPANSION JOINT AND AT 30 FOOT MAXIMUM SPACING ELSEWHERE.
3. BOTTOM OF POST BASE PLATE TO BE SET ON A $\frac{1}{8}$ " MOLDED FABRIC BEARING PAD (M9.16.2). THE THICKNESS OF THE PAD SHALL BE IGNORED BY THE DETAILER.
4. THE CHAIN LINK FABRIC SHALL BE SECURED BY KNUCKLING TOGETHER THE CUT ENDS OF THE FABRIC WIRE IN A MANNER SIMILAR TO THE ORIGINALLY MANUFACTURED END.
5. WHERE THE R.O.W. FENCE MUST MEET THE SCREEN, USE THE SQUARE END TO HIGHWAY GUARDRAIL TRANSITION DETAIL.
6. THE SCREEN END TREATMENT TO BE USED (SQUARE OR TAPERED) IS SPECIFIED ELSEWHERE ON THE CONSTRUCTION DRAWINGS.
7. POST SPACING SHALL BE UNIFORM BETWEEN TAPERED ENDS.
8. SET POSTS PERPENDICULAR TO GRADE FOR GRADES UP TO 3%. SET POSTS PLUMB FOR GRADES GREATER THEN 3%.
9. USE 2" x 6 GA. FABRIC EXCEPT OVER MBTA RAPID TRANSIT LINES WHERE 1" x 9 GA. FABRIC SHALL BE USED.

1. POSTS, RAILS, COVER PLATES AND SPLICE PLATES SHALL RECEIVE A DARK BRONZE ANODIZED FINISH.
2. CHAIN LINK FABRIC SHALL RECEIVE A 4±1 MIL POLYESTER POWDER COAT FINISH. THE COLOR SHALL BE DARK BRONZE TO MATCH COLOR OF ANODIZED ALUMINUM FRAMEWORK.
3. #17 SELF TAPPING SCREWS AND 1/2" Ø COVER PLATE BOLTS TO BE COLORED TO MATCH THE ANODIZED EXTRUSIONS.



EXTRUSIONS & PLATES _____ ASTM B 221, ALLOY 6061-T6

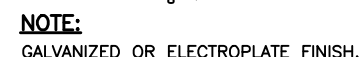
CHAIN LINK FABRIC _____ AASHTO M 181 TYPE III (ALLOY 6061-T89 OR T94)

SELF TAPPING SCREWS _____ TYPE 304 STAINLESS STEEL WITH $\frac{1}{4}$ " THICK EPDM
(ETHYLENE PROPYLENE DIENE MONOMER) WASHERS

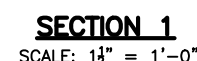
ANCHOR BOLTS _____ AASHTO M 164 GALVANIZED
(ROTATION CAPACITY TEST NOT REQUIRED)

TEE BOLTS _____ ASTM A 307 GALVANIZED OR TYPE 304 STAINLESS STEEL

COVER PLATE BOLTS _____ TYPE 304 STAINLESS STEEL WITH OVERSIZED STAINLESS
WASHER AND STAINLESS NUT WITH NYLON INSERT



ANCHOR CAGE
SCALE: 3" = 1'-0"



MONTH DD, YYYY	ISSUED FOR CONSTRUCTION
DATE	DESCRIPTION
USE ONLY PRINTS OF LATEST DATE	

TYPE II PROTECTIVE SCREEN
(SHEET 1 OF 2)