

Submitted Electronically via HPC-Testimony@state.ma.us

September 8, 2014

Dear Ms. Johnson:

Enclosed you will find written testimony for the Massachusetts General Hospital as requested for the upcoming cost trend hearings. Please note that since Massachusetts General Hospital is an affiliate of Partners HealthCare System, its responses are identical to their responses. However, where appropriate, hospital-specific data tables are provided.

By my signature below, I certify that I am legally authorized and empowered to represent Massachusetts General Hospital for the purposes of this testimony, and acknowledge that it is signed under the pains and penalties of perjury.

Please direct any follow-up questions to Aimee Golbitz, Office of Government Affairs at Partners HealthCare (agolbitz@partners.org 617-823-3997).

Sincerely,

A handwritten signature in black ink that reads "Peter L. Slavin". The signature is written in a cursive, flowing style.

Peter Slavin, MD
President

Exhibit A: Notice of Public Hearing

Pursuant to M.G.L. c. 6D, § 8, the Health Policy Commission, in collaboration with the Office of the Attorney General and the Center for Health Information and Analysis, will hold a public hearing on health care cost trends. The hearing will examine health care provider, provider organization and private and public health care payer costs, prices and cost trends, with particular attention to factors that contribute to cost growth within the Commonwealth's health care system.

Scheduled hearing dates and location:

Monday, October 6, 2014, 9:00 AM
Tuesday, October 7, 2014, 9:00 AM
Suffolk University Law School
First Floor Function Room
120 Tremont Street, Boston, MA 02108

Time-permitting, the HPC will accept oral testimony from members of the public beginning at 4:00 PM on Tuesday, October 7. Any person who wishes to testify may sign up to offer brief comments on a first-come, first-served basis when the hearing commences on October 6.

Members of the public may also submit written testimony. Written comments will be accepted until October 16, 2014 and should be submitted electronically to HPC-Testimony@state.ma.us, or, if comments cannot be submitted electronically, sent by mail, post-marked no later than October 16, 2014, to the Health Policy Commission, Two Boylston Street, 6th floor, Boston, MA 02116, attention Lois H. Johnson.

Please note that all written and oral testimony provided by witnesses or the public may be posted on the [HPC's website](#).

The HPC encourages all interested parties to attend the hearing. Visit the Suffolk Law School [website](#) for driving and public transportation directions. Suffolk Law School is located diagonally across from the Park Street MBTA station (Red and Green lines). Parking is not available at the law school but information about nearby garages is listed at the link provided.

If you require disability-related accommodations for this hearing, please contact Kelly Mercer at (617) 979-1420 or by email Kelly.A.Mercer@state.ma.us a minimum of two weeks prior to the hearing so that we can accommodate your request.

For more information, including details about the agenda, expert and market participant panelists, testimony and presentations, please check the Annual Cost Trends Hearing section of the HPC's [website](#). Materials will be posted regularly as the hearing dates approach.

Exhibit B: Instructions and HPC Questions for Written Testimony

Instructions:

On or before the close of business on September 8, 2014, electronically submit, **using the provided template**, written testimony signed under the pains and penalties of perjury to: HPC-Testimony@state.ma.us. **You may expect to receive the template for submission of responses as an attachment received from HPC-Testimony@state.ma.us.** If you have any difficulty with the template or did not receive it, please contact Kelly Mercer at Kelly.A.Mercer@state.ma.us or (617) 979-1420.

Please begin each response with a brief summary not to exceed 120 words. The provided template has character limits for responses to each question, but if necessary, you may include additional supporting testimony or documentation in an Appendix. Please submit any data tables included in your response in **Microsoft Excel or Access format**.

The testimony must contain a statement that the signatory is legally authorized and empowered to represent the named organization for the purposes of this testimony, and that the testimony is signed under the pains and penalties of perjury. An electronic signature will be sufficient for this submission.

If you have any other questions regarding this process or regarding the following questions, please contact: Lois Johnson at Lois.Johnson@state.ma.us or (617) 979-1405.

[Remainder of page intentionally left blank]

Questions:

We encourage you to refer to and build upon your organization's 2013 Pre-Filed Testimony responses, if applicable. Additionally, if there is a point that is relevant to more than one question (including Exhibit C questions from the Attorney General), please state it only once and make an internal reference.

1. Chapter 224 of the Acts of 2012 (c. 224) sets a health care cost growth benchmark for the Commonwealth based on the long-term growth in the state's economy. The benchmark for growth between CY2012-CY2013 and CY2013-CY2014 is 3.6%.

SUMMARY: See responses below.

- a. What trends has your organization experienced in revenue, utilization, and operating expenses from CY 2010-CY2013 and year-to-date 2014? Please comment on the factors driving these trends.

See MGH Attachment 1.

- b. What actions has your organization undertaken since January 1, 2013 to ensure the Commonwealth will meet the benchmark, and what have been the results of these actions?

Partners is deploying a multi-faceted strategy to address health care cost trend that includes creation of a sustainable financing mechanism, new incentive structures, a high risk care management program, integrated mental health services, tools for specialist engagement, a post acute strategy, fostering patient engagement, and new technologies. Within primary care, we have funded efforts to certify all 236 practices as Patient Centered Medical Homes (additional information in section 12).

We continue our efforts in complex high risk care management. Partners has hired 80 nurse care managers, 16 social workers, 3 pharmacists, and 8 community resource specialists who are now managing nearly 10,000 high risk patients. We have initiated a number of programs around specialist engagement, patient engagement and post acute care which we discuss below.

- c. What actions does your organization plan to undertake between now and October 1, 2015 (including but not limited to innovative care delivery approaches, use of technology and error reduction) to ensure the Commonwealth will meet the benchmark?

In addition to our commitment to transforming primary care through patient centered medical home and high risk care management efforts, we are now implementing a behavioral health integration program in primary care. The Behavioral Health Integration initiative seeks to support primary care practices and will include training, enhanced screening, central support for patients, and embedded resources in primary care practices to implement collaborative care models. We are also continuing our work in engaging specialists through increased virtual visit and electronic referral management systems. These programs are designed to provide alternatives to traditional encounter based visits for specialist care. Finally, we have entered into a consent agreement with the

Massachusetts' Attorney General that places a 3.6% ceiling on our Total Medical Expense growth.

- d. What systematic or policy changes would encourage or enable your organization to operate more efficiently without reducing quality?

While Partners is committed and will continue to make progress in reducing the growth in health care costs, it does so in the face of serious challenges. Removing these challenges would greatly speed the pace of progress towards lowering health care costs. These challenges include:

- Ability to pursue new partnerships with community hospitals and community physicians
- Reimbursement models with non-aligned incentives (e.g., global budgets based on underlying fee for service payments; and services such as nurse care managers not adequately reimbursed)
- Public payer shortfalls
- Duplicative reporting requirements
- Complex billing policies
- Lack of access to real-time patient claims data
- Labor costs
- Heightened demand for high-cost technology and interventions
- Pricing of new treatments by the pharmaceutical industry (ie – Sovaldi for Hepatitis C)

-
2. C. 224 requires health plans to reduce the use of fee-for-service payment mechanisms to the maximum extent feasible in order to promote high-quality, efficient care delivery.

SUMMARY: See responses below.

- a. How have alternative payment methods (APMs) (payment methods used by a payer to reimburse health care providers that are not solely based on the fee-for-service basis, e.g., global budget, limited budget, bundled payment, and other non-fee-for-service models, but not including pay-for-performance incentives accompanying fee-for-service payments) affected your organization's overall quality performance, care delivery practices, referral patterns, and operations? APMs have further supported our integrated care delivery model. In our attempts to promote the best possible care for all our patients and at the same time meet the demands of multiple external contract requirements including APMs, we have created an internal performance framework (IPF) that uses a single set of performance targets and a single incentive pool for all of our contracts. The IPF

rewards member institutions for 1) adopting programmatic initiatives, 2) meeting external quality measure targets, and 3) limiting the growth of medical expense trend.

- b. Attach and discuss any analyses your organization has conducted on the implementation of APMs and resulting effects on your non-clinical operations (e.g., administrative expenses, resources and burdens).

We have not conducted any analyses specifically related to the impact of APMs on non-clinical operations.

- c. Please include the results of any analyses your organization has conducted on this issue, including both for your patients paid for under APMs and for your overall patient population.

Because of the evolving health care market and secondary effects of programs implemented, no estimation can precisely predict the program cost or TME reduction at the population level. In building models, we are consulting pilot program data, academic literature, and input from institutional administrators, subject-matter experts, and business analysts to make structured, evidence-based estimations. Our initial analyses demonstrate positive net savings, however our modelling efforts are not yet complete.

-
- 3. Please comment on the adequacy or insufficiency of health status risk adjustment measures used in establishing risk contracts and other APM contracts with payers.
SUMMARY: Partners has been a long supporter in the use of health status as a measure in the change of member acuity. Currently we are using the concurrent Verisk DxCG models for use in commercial risk contracts. While we have read and observed some of the limitations of these models they are still the industry leaders in measuring the acuity changes in a population. Partners currently participates in global risk contracts as a form of APM, if different APMs (i.e. bundled payments) are introduced to the market we would evaluate the need and practicality of risk adjustment on a case by case basis.

- a. In your organization's experience, do health status risk adjustment measures sufficiently account for changes in patient population acuity, including in particular sub-populations (e.g., pediatric) or those with behavioral health conditions?

Partners does not support the use of standard Health Status models to measure the acuity of subpopulations. Similar to how an insurance company bears risk, a diverse mix of members and providers are necessary to limit the inherent random variation in health status and member expenses. Some companies have the ability to create models tailored to subpopulations that would need to be implemented for use on subpopulations.

- b. How do the health status risk adjustment measures used by different payers compare?

For commercial payers Partners is using concurrent model published by Verisk DxCG, although the version numbers and underlying settings do differ by payer.

Generally our trend target with the payer is either set in advance of the performance year or is a comparison to the payer's network trend over the same time period. If the trend target is set in advance we believe it is best to use a health status measurement that measures our own year to year change in health status. If the trend target is a comparison to the payer's network we believe it is appropriate to compare our change in health status to the payer's network change in health status.

- c. How does the interaction between risk adjustment measures and other risk contract elements (e.g., risk share, availability of quality or performance-based incentives) affect your organization?

As stated above, Partners is a strong supporter in the use of health status for risk adjustment in our risk contracts and we view it as a critical element with any agreement. Each payer implementing health status models has had a different approach to its use and application. Based on Partners assessment of the payers' approach, we would adjust our level of risk share, maximum risk exposure, and setting of the trend target. A uniform approach among payers would help providers manage global risk contracts and avoid any unforeseen issues.

-
- 4. A theme heard repeatedly at the 2013 Annual Cost Trends Hearing was the need for more timely, reliable, and actionable data and information to facilitate high-value care and performance under APMs. What types of data are or would be most valuable to your organization in this regard? In your response, please address (i) real time data to manage patient care and (ii) historic data or population-level data that would be helpful for population health management and/or financial modeling.

SUMMARY: See response below.

ANSWER:

With respect to real time data, providers will greatly benefit from the flow of data on the health information exchange (Mass HIway). Data such as admission, discharge and transfer information sent to providers in a timely fashion via an HIE can help clinical teams improve care coordination.

With respect to historic data, we were hoping that the state's All Payer Claims Data Base would be a source of more timely information for us to use in managing our population. To date the database is not sufficiently complete or robust for that purpose. We believe continued focus on developing that tool will be welcomed by providers across the Commonwealth and prove to be an essential tool in meeting the goals of 224.

-
- 5. C. 224 requires health plans to attribute all members to a primary care provider, to the maximum extent feasible.

SUMMARY: See responses below.

- a. Which attribution methodologies most accurately account for patients you care for?

Patient choice should be considered the gold-standard for patient attribution. Though claims data plays an important role, provider data should play a critical

role in validating claims based algorithms. The absence of provider data (e.g. billing, electronic medical records) suggest that there may not be a relationship between the patient and the provider organization. Additionally, as providers move to non-billable services to better coordinate care, provider data will be necessary to demonstrate an ongoing relationship with the patient. Attribution methods should align populations to providers at the beginning of each performance year, allowing the organization to enroll aligned patients into medical management programs.

- b. What suggestions does your organization have for how best to formulate and implement attribution methodologies, especially those used for payment?

There is a benefit to having a common approach to patient attribution. Payers and providers are best positioned to develop these algorithms based on their operational knowledge of health care delivery. These algorithms should build upon evidence from academic literature and current programs such as the Medicare Pioneer ACO. Operational considerations for how patients articulate their primary care clinician choice to payers will need to be defined by payers and providers (especially for PPO products), but should be a priority. Additionally, in order to create accurate attribution algorithms, payers should develop systems to accurately identify physicians and organizations through National Provider Identification (NPI) and Tax Identification Number (TIN).

-
6. Please discuss the level of effort required to report required quality measures to public and private payers, the extent to which quality measures vary across payers, and the resulting impact(s) on your organization.

SUMMARY:

Partners monitors, reports and endeavors to improve many quality measures reported to public and private payers. The burden of reporting is significant due to the quantity of metrics, the variation among payer specifications and regulatory agencies, and the data sources required. Partners works to align payer measures of quality yet considerable variation remains given the breadth of patients we serve.

ANSWER:

Centrally, Partners staff monitor the performance of more than 200 measures, share best practices for quality improvement, shape the development and adoption of meaningful measures and comparative benchmarks, and evaluate and negotiate payer proposals. Partners staff serve as the primary body responsible for chart reviews, claims analysis and reporting performance to payers on behalf of physicians. While Partners manages a majority of the ambulatory quality reporting work centrally (and needs to staff for this work) physician practices are also called upon to supply additional data and reporting to payers, which creates a local burden.

For Partners hospitals, the greatest level of effort to report quality measures resides at their institutional level. Each hospital employs a staff of experienced nurses, quality measurement analysts and managers to manually abstract, check, report and monitor data elements on a monthly and quarterly basis. This can require chart reviews of 12,000 and 14,000 patient records at Brigham and Women's and Mass General, respectively, for

Centers for Medicare and Medicaid and MassHealth programs alone. Variations among Partners hospitals in resources to support the reporting and improvement initiatives associated with quality measures, coupled with the mandatory nature of this work, compete with other priorities that may have a greater impact on improving the quality and value of patient care.

In the future, Partners new electronic health record systems may obviate the need for some chart reviews. We will leverage this new system to streamline reporting and improve the quality of data beyond that available from claims.

-
7. An issue addressed both at the 2013 Annual Cost Trends Hearing and in the Commission's July 2014 Cost Trends Report Supplement is the Commonwealth's higher than average utilization of inpatient care and its reliance on academic medical centers. SUMMARY: See responses below.

- a. Please attach any analyses you have conducted on inpatient utilization trends and the flow of your patients to AMCs or other higher cost care settings.

Partners Business Planning conducts biannual analyses volume trends, with a focus on inpatient utilization and shift of care to lower cost observation or outpatient care. See most recent report attached that demonstrates a decline in inpatient volume, especially patients from Massachusetts, and an increase in inpatient case mix index (CMI) as higher acuity cases remain as inpatient, and lower acuity shift to observation.

Additionally, the Population Health Management Performance Oversight Committee monitors inpatient admission per 1000s and has demonstrated that admissions per 1000 risk lives has decreased in 2014 compared to prior year (ranging from 6% to 26% depending on population and month of admission). (See MGH Attachment 2.)

- b. Please describe your organization's efforts to address these trends, including, in particular, actions your organization is taking to ensure that patients receive care in lower-cost community settings, to the extent clinically feasible, and the results of these efforts.

Partners academic medical centers have worked with owned and affiliated community hospitals and ambulatory centers to strengthen local services so that patients could receive care in the community with some or all related services at community rates. Examples include: cancer programs at South Shore, Netwon Wellesley, Milford Hospital, North Shore at Danvers, and Emerson. Brigham and Women's has moved numerous services and volume from their main campus to Faulkner. The plan submitted to HPC for Hallmark/Lawrence Memorial's conversion to a short stay ambulatory facility operated by the Mass General is an example of plans to move secondary care from Mass General to a community site. Similarly, plans for converting the cancer program at Hallmark under the Mass General license assume transfer of significant business from Mass General to Hallmark at community rates. Finally, we plan to make a significant

commitment to the development of community based mental health services as part of our restructuring of Union Hospital.

-
8. The Commission found in its July 2014 Cost Trends Report Supplement that the use of post-acute care is higher in Massachusetts than elsewhere in the nation and that the use of post-acute care varies substantially depending upon the discharging hospital.

SUMMARY:

Partners and its post-acute delivery system, Partners Continuing Care, are leaders in providing high-value care across the continuum, providing direct care at every level of post-acute care (PAC) and collaborating with additional high-quality providers, ensuring optimal matching of patient needs to services.

- a. Please describe and attach any analyses your organization has conducted regarding levels of and variation in the utilization and site of post-acute care, as well as your efforts to ensure that patients are discharged to the most clinically appropriate, high-value setting.

Through: a) normal hospital operations, b) Pioneer ACO and population health operations; and c) evaluations of bundled payment opportunities, multiple examinations of post-acute variation have been undertaken and are underway. These include variation between Partners hospitals, within/across hospital service lines, our ACO performance versus other ACOs, and our network PAC providers versus non-network providers. Of note, such analyses are rife with challenges, including adequate risk-adjustment that require variables (such as function, cognition, social supports, etc.), which are not typically available in administrative data sets. Further, this population is quite heterogeneous – with varied care needs over varied time periods (e.g. “30 day episodic” view versus lifetime care need/independence measures) for which a one-sized fits all solution is particularly problematic. (See also response to 8b.)

- b. How does your organization ensure optimal use of post-acute care?

Ensuring optimal post-acute care requires four key steps: 1) assessing patients’ needs; 2) having access to high-quality post-acute care services (both understanding quality and partnering with those providers); 3) matching services to those needs; and 4) ensuring a safe transition upon hospital discharge and across the continuum. Multiple efforts are underway across Partners at each step, including innovative assessment tools, unique quality-based collaborations with PAC providers, multiple discharge transition tools, and myriad care redesign efforts to improve care transitions and enhance post-discharge care coordination.

-
9. C. 224 requires providers to provide patients and prospective patients with requested price for admissions, procedures and services. Please describe your organization’s progress in this area, including available data regarding the number of individuals that seek this information (using the template below) and identify the top ten admissions, procedures and services about which individuals have requested price information.

Additionally, please discuss how patients use this information, any analyses you have conducted to assess the accuracy of estimates provided, and/or any qualitative observations of the value of this increased price transparency for patients.

SUMMARY: See response below.

Health Care Service Price Inquiries				
Year		Number of Inquiries via Website	Number of Inquiries via Telephone/In Person	Average (approximate) Response Time to Inquiries*
CY2014	Q1		151	
	Q2		133	
	Q3		105	
	TOTAL:		389	

* Please indicate the unit of time reported.

ANSWER:

Partners has implemented a patient price estimate process for its hospitals. The current process is largely manual and includes an electronic patient intake form, worksheets for calculating the estimate, and key point of contacts to help address any questions. In the future, the process will be more automated as our new IT system will provide the capability to generate and track these estimates for patients. We will also be exploring the option of receiving these inquiries via a centralized website. We make every effort to provide the estimates within the 48 hour timeframe.

Partners does not systematically track the number of inquiries across all its entities, however in the table above we provide our best estimate of the number of inquiries for inpatient services through the end of August 2014 at Brigham and Women's, Mass General, Newton Wellesley, and North Shore Medical Center. Similarly, we have not performed an analysis across the system of the top inpatient procedures. However, preliminary reviews indicate that labor and delivery, joint replacements, and gastric bypass are common inpatient procedures for which price estimates are requested.

-
10. Please describe the manner and extent to which tiered and limited network products affect your organization, including but not limited to any effects on contracting and/or referral practices, and attach any analyses your organization has conducted on this issue. Describe any actions your organization taken (e.g., pricing changes) in response to tier placement and any impacts on volume you have experienced based on tier placement.

SUMMARY:

It is very difficult to analyze the specific impact of these product design mechanisms though we are very interested in doing so. Where our providers are excluded from a limited network product, by definition there is no experience to analyze other than emergency services. Tiering is most often accomplished as a design variation within a product or product category, at a level that we do not capture reliably at patient registration. So we aren't able to break out utilization patterns for patients with tiered incentives relative to others. However, we have conducted some preliminary analysis,

which we discuss below. We believe we need to maintain continued focus on value, cost and quality to address what we understand to be increasing cost concerns by consumers, regardless of changes that may occur to their benefit designs.

ANSWER: Attached (MGH Attachment 3) is a summary of an analysis related to tiered and limited network product offerings that we conducted in early 2014: a volume analysis that includes a hypothesis that limited or tiered networks may have influenced referral declines. [Note that we did not have any specific data that definitively identified patients in such products to establish a causal relationship.]

As the attached summary shows, there has been a recent decline in HMO membership over time. What may have driven that decline is: (1) increase in the number of lives covered by tiered and limited network products, (2) at-risk providers changing their referral patterns, and 3) patient choice. Anecdotal evidence suggests that patients are responding to differential financial incentives and talking to their doctors about referrals.

-
11. The Commission has identified that spending for patients with comorbid behavioral health and chronic medical conditions is 2-2.5 times as high as spending for patients with a chronic medical condition but no behavioral health condition. As reported in the July 2014 Cost Trends Report Supplement, higher spending for patients with behavioral health conditions is concentrated in emergency departments and inpatient care.

SUMMARY: See responses below.

- a. Please describe ways that your organization is collaborating with other providers to integrate physical and behavioral health care services and provide care across a continuum to these high-cost, high-risk patients.

Partners has implemented the Integrated Care Management Program (iCMP) within all of its primary care practices. The program addresses improved care coordination and management of individuals with medically chronic, complex and co-occurring behavioral health (BH) conditions. The program uses a team approach whereby BH/medical care managers, primary care, BH providers, other health professionals and patients collaborate in developing a coordinated treatment plan. This model of care necessitates enhanced and strengthened relationships with community-based programs including both hospitals and physicians. The collaboration between Partners and Neighborhood Health Plan (NHP) also allows for adaptation of iCMP to manage high cost/risk Medicaid patients. These interventions address the psycho-social determinants of healthcare.

- b. Please discuss ways that your organization is addressing the needs of individuals to avoid unnecessary utilization of emergency room departments and psychiatric inpatient care.

iCMP - This program provides supports for patient health within their communities. Care managers provide timely transitions with essential clinical information. Community health workers and patient navigators provide case management to support patient adherence with care plans and medication.

Access - Partners has enhanced access to primary care and urgent BH care to divert individuals from unnecessary high cost services. Partners has increased access to suboxone clinics for opiate addiction. Pilots, which assist primary care with identifying and treating patients with depression, use early detection, increased access and treatment compliance to mitigate emergency department/inpatient visits.

- c. Please discuss successes and challenges your organization has experienced in providing care for these patients, including how to overcome any barriers to integration of services.

Many of Partners successes derive from the iCMP. It includes centralized information technology systems to provide notification of admissions, discharges and emergency department visits, care management tools (patient registries) to identify and allocate resources for patients, and BH case managers. Partners has also entered into alternative payment model contracts payers to support care management, new technologies, quality and cost efficiency.

Key challenges include changing the culture around treating BH, new technologies (design, payment), and operational support (staffing, training, work flow). We are overcoming these challenges by developing primary care physician champions, additional training, creating clinical incentives, and providing financial/clinical resources.

- d. There has been increased statewide interest in data reporting across all services, inclusive of behavioral health. Please describe your organization's willingness and ability to report discharge data.

Assuming all providers would be required to provide similar information, Partners would be willing to provide more detailed discharge data. However, before creating additional reporting burdens, there should be a clear understanding on the use of such data and whether or not existing data sources could suffice e.g., the all payers claims database. In developing such a system, it is important to note there is considerable variation in the resources available to support the reporting and improvement initiatives at the local level. Also, every effort should be made to ensure that commercial payers and regulatory agencies streamline data collection efforts to avoid reporting different measures in the same content area to different payers/agencies.

12. Describe your organization's efforts and experience with implementation of patient-centered medical home (PCMH) model.

SUMMARY:

Partners has developed multi-year milestones specific to PCMH with a final goal of having all our primary care practices National Committee for Quality Assurance (NCQA) recognized by the end of 2018. To help our primary care network succeed, we have created an internal framework for practices to begin familiarizing themselves with the key elements of a medical home. In addition, we have created a robust program to assist practices in applying for PCMH recognition through NCQA. The journey towards

becoming a patient-centered medical home requires leadership engagement and a commitment from all practice staff. Achieving PCMH recognition can be a large undertaking for a practice and dedicated time should be set aside for implementation.

- a. What percentage of your organization's primary care providers (PCPs) or other providers are in practices that are recognized or accredited as PCMHs by one or more national organizations?

Partners has a network of 236 primary care practices. Of those 236, 5 practices have met NCQA Level 3 recognition equating to 2% of the total network. Although only 2% of practices are at the highest level of NCQA certification, over 60% of our practices have reached "primed status" meaning they are ready to begin the certification process and nearly 100% of practices are at least half way to achieving primed status.

- b. What percentage of your organization's primary care patients receives care from those PCPs or other providers?

Roughly 3% of our primary care patients receives care from these physicians.

- c. Please discuss the results of any analyses your organization has conducted on the impact of PCMH recognition or accreditation, including on outcomes, quality, and costs of care.

While we have reviewed performance for primary care practices who have begun implementing elements of a patient-centered medical home, we have not yet conducted analyses on the impact any level of PCMH recognition has on quality outcomes and cost of care.

-
13. After reviewing the Commission's 2013 Cost Trends Report and the July 2014 Supplement to that report, please provide any commentary on the findings presented in light of your organization's experiences.

SUMMARY: No additional comments.

ANSWER: No additional comments.

Exhibit C: Instructions and AGO Questions for Written Testimony

Please note that these pre-filed testimony questions are for hospitals. To the extent that a hospital submitting pre-filed testimony responses is affiliated with a provider system also submitting pre-filed testimony responses, each entity may reference the other's response as appropriate.

1. Please submit a summary table showing for each year 2010 to 2013 your total revenue under pay for performance arrangements, risk contracts, and other fee for service arrangements according to the format and parameters provided and attached as AGO Hospital Exhibit 1 with all applicable fields completed. Please attempt to provide complete answers. To the extent you are unable to provide complete answers for any category of revenue, please explain the reasons why.

Completed in Attachment AGO Hospital Exhibit 1

See MGH Attachment 4.

-
2. For each year 2010 to present, please submit a summary table showing for each line of business (commercial, government, other, total) your inpatient and outpatient revenue and margin for each major service category according to the format and parameters provided and attached as AGO Hospital Exhibit 2 with all applicable fields completed. Please submit separate sheets for pediatric and adult populations, if necessary. If you are unable to provide complete answers, please provide the greatest level of detail possible and explain why your answers are not complete.

Completed in Attachment AGO Hospital Exhibit 2

See MGH Attachment 5.

-
3. Please explain and submit supporting documents that show how you quantify, analyze and project your ability to manage risk under your risk contracts, including the per member per month costs associated with bearing risk (e.g., costs for human resources, reserves, stop-loss coverage), solvency standards, and projections and plans for deficit scenarios. Include in your response any analysis of whether you consider the risk you bear to be significant.

Partners uses two major sources of data to analyze performance in its risk contracts and project risk. Partners receives claims data from the payers, and has the ability to extract clinical data from our electronic health records. Partners uses one or both of these sources to produce reports that approximate its year-end performance in its risk contracts. Reports are produced monthly, and a final settlement report is produced at the end of the contract year. In addition, Partners may rely on interim reporting from the payers.

Partners uses its quarter-end reports to determine whether the network is in a surplus or deficit, and books reserves at its entities to cover any projected losses. A cash retention on physician billing is

taken by the payer for some of Partners network participants, which is then returned to Partners Community Healthcare, Inc. (PCHI).

4. Please explain and submit supporting documents that show how you analyze and track the volume of inpatient and outpatient referrals to your hospital and the associated revenue from those referrals by particular physicians or provider groups. Please include a description and examples of how your organization uses this information.

Partners tracks volume by referring group to better understand internal and external trends and identify opportunities for service improvement. For example, biannually, Partners reviews volume and revenue and other financial metrics for current Partners affiliated practices and their referral patterns to Partners inpatient acute facilities. Additionally, Partners has developed a new analytic tool that monitors volume and financial trends across Partners and local institutions to monitor trends and gain and understanding of the factors driving them. The tool currently features five dashboards, one of which focuses on referral trends, both internal and external.

MGH Only

Does not include MD data

Data is Fiscal Year based

FY2010 - 2013 (Oct - Sept) is based on reconciled data, FY14 Q2 (Oct - Mar) is based on live data

Fiscal Year	Cases	Net Patient Service Revenue	Total Costs	Facility
2010	1,723,163	\$ 1,963,524,655	\$ 1,775,242,372	MGH
2011	1,718,909	\$ 2,073,647,332	\$ 1,887,517,086	MGH
2012	1,749,326	\$ 2,235,229,789	\$ 2,029,931,020	MGH
2013	1,742,832	\$ 2,297,737,071	\$ 2,138,094,248	MGH
2014 Q2	858,003	\$ 1,163,262,675	\$ 1,059,203,629	MGH

Financial Definitions

Net Patient Service Revenue = Contracted Payer Net Revenue - Free Care - Bad Debt - Denial - HSN Assessment

Total Costs = Direct + Indirect

t + HSN Receipts

PHS Acute inpatient volume continues to decline in FY14 (through Q3) while observation growth has flattened

FY13YTD-FY14YTD

PHS Acute Inpatient -3%

PHS Acute Observation¹ 0%

Inpatient volume decline has accelerated in FY14YTD



	Total Cases	% Total	% Δ
Inpatient	107,700	81.5%	-3.2%
Observation	24,482	18.5%	-0.1%
Total	132,182	100.0%	-2.5%

- From FY10 to FY13, PHS combined observation and inpatient grew +3%; However, PHS observation and inpatient volume declined in FY14YTD (-3%), outpacing market decline of -1% as reported in Area Hospital Survey
 - PHS observation volume as share of combined inpatient and observation stabilized at 18.5% in FY14YTD while the market continued to see a growth in observation cases (+9%), reaching 22% of combined Inpatient + Observation
- PHS inpatient declined less than overall market decline (-3% compared to -4%)
 - Inpatient volume decline was driven by NSMC and BWH (-9% and -8%) and offset by BWFH, NWH and MGH (+3%, +2% and +1% respectively)
 - Largest percentage inpatient decline seen in gynecology, NICU, urology and Addiction Recovery
- As was seen previously, inpatient discharge days declined slightly (-1%) while CMI grew (+2%)
- Outpatient volume was flat (-0.6%), compared to +3% growth seen from FY11 to FY13

1) Source: Healthcare Directions, August 21, 2014 and Area Hospital Survey FY14Q3

2) FY13YTD and FY14YTD include fiscal quarters 1-3

3) Observation volume in Area Hospital Survey does not match Healthcare Directions due to definitional differences. For example, using PHS observation definition FY14 % observation is 18.5%, however, PHS data submitted to the Area Hospital Survey reflects observation as 20% of total observation and inpatient.

While in total inpatient volume declined, MGH, BWFH and NWH volume increased. Decline seen in both MA and regionally.

	FY13YTD-FY14YTD	IP
MA volume	-3%	
Other NE & NY volume	-2%	

MA Inpatient volume decline has accelerated in FY14 YTD

MGH Inpatient Discharges



MGH inpatient volume increased (+0.7%, +244 cases) with a slight decline in CMI (-0.5%). Patient days also increased slight (+0.5%). Growth was seen in medical and other non-surgical cases. Surgical discharges declined by -5%.

BWH Inpatient Discharges



BWH inpatient volume decline is driven in part by shift of cases to BWFH. In FY14YTD, BWFH has seen inpatient growth of 103 cases compared to BWH inpatient decline of 2,621 cases. Surgical cases saw the slowest decline at -3.2%, relative to the overall decline of -8.1%.

- While MA inpatient volume declined -3% from FY10 to FY13, decline has accelerated to -3% in the first 9 months of FY14 alone
- From FY10 to FY13, other NE & NY inpatient volume grew +11%. About half of this growth occurred between FY10 to FY11. In FY14YTD, NE & NY inpatient volume has started to decline
- MA volume decline is spread across service types while other NE & NY inpatient decline is concentrated in surgical discharges
- CMI has grown by ~2% in both geographies

Other NE & NY Inpatient volume started to decline in FY14 YTD

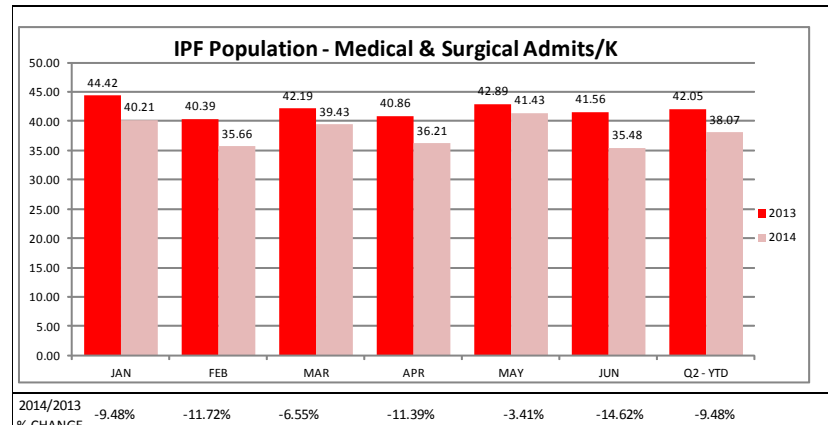
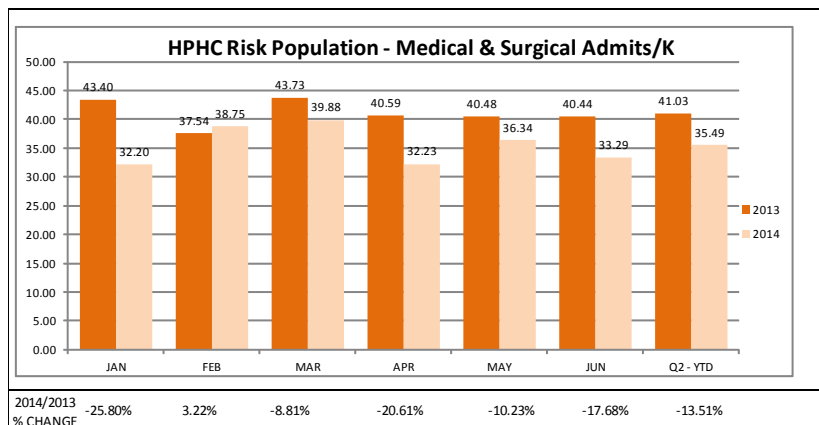
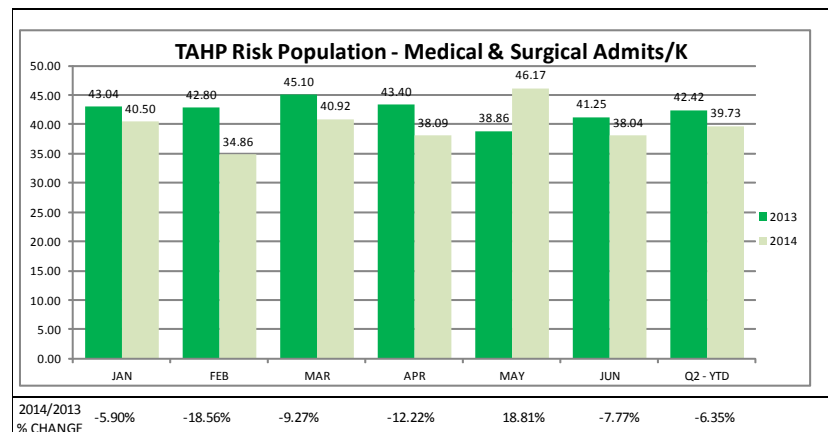
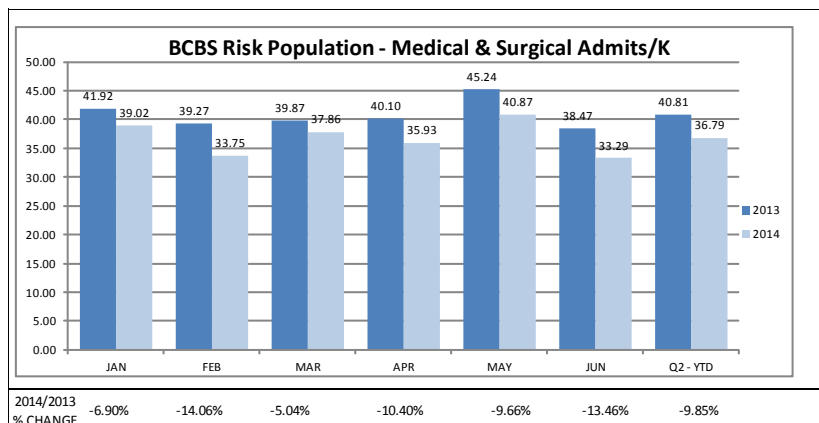
	Current Cases	% of Total (IP)	Base Cases	Abs Δ	% Δ	CMI	% Δ
Surgical Discharges	4,498	54.4%	4,759	-261	-5.5%	5.77	3.5%
Other IP Discharges	709	8.6%	737	-28	-3.8%	1.44	4.7%
Medical Discharges	3,063	37.0%	2,938	125	4.3%	2.23	2.6%
Totals	8,270	100.0%	8,434	-164	-1.9%	4.09	1.6%

Surgical discharges declined by -5.5% while medical discharges grew 4.3%.

1) Source: Healthcare Directions, August 21, 2014
2) FY13YTD and FY14YTD include fiscal quarters 1-3

Q1 2014 Performance Update Performance Oversight Committee

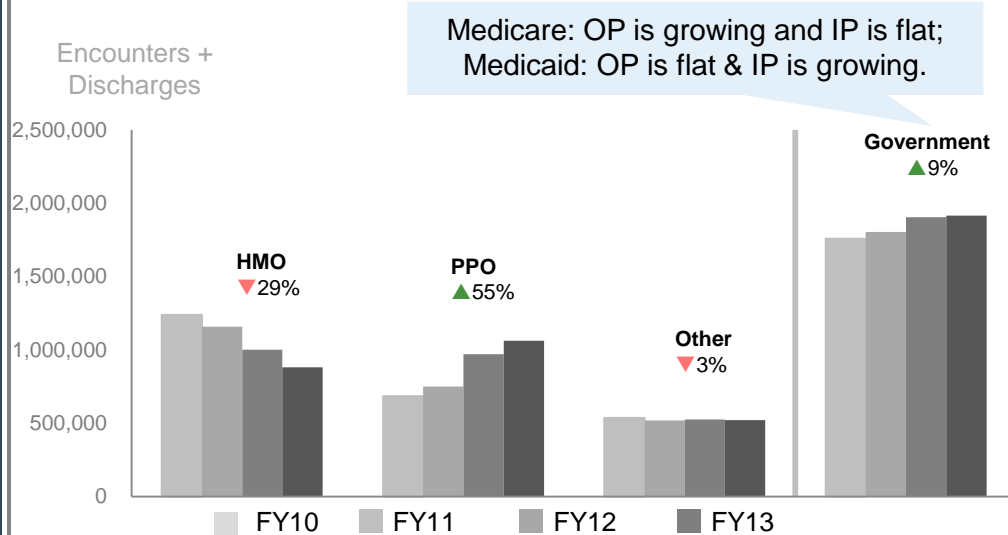
Q2 2014 Discharges



- We are monitoring real time discharges as a proxy for paid claims activity.
- 2014 Med/Surg Discharges/ K are still consistently lower than prior year.

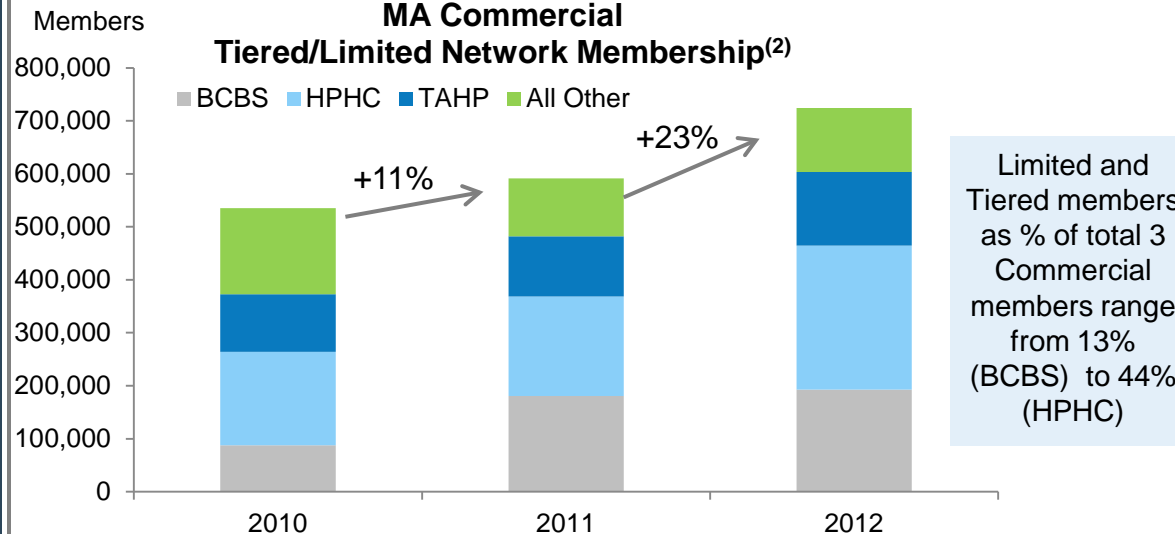
PHS Acute payer mix shift away from commercial; HMO in particular; trend expected to continue

PHS Combined Inpatient & Outpatient by Payer¹



- PHS Big 3 HMO has declined - 29% across inpatient and outpatient from FY10-FY13
 - Similar degree of Big 3 HMO decline for both inpatient and outpatient, AMC & CHs
 - Decline appears greater than MA HMO membership decline
- Shift may be indicative of increased patient price sensitivity and changes in benefit design
- Increased employer offering and adoption of alternate insurance products; consumer adoption is slower

MA Commercial
Tiered/Limited Network Membership⁽²⁾



Increase in transparency will allow patients to shop for “value”

1) PHS Business Planning, AADW Dec 2013

2) PSC Market Data Sharepoint site; compilation of publicly reported data (e.g. AG cost hearings)

Exhibit 1 AGO Questions to Providers and Hospitals

Please email HPC-Testimony@state.ma.us to request an Excel version of this spreadsheet.

NOTES:

1. Data entered in worksheets is **hypothetical** and solely for illustrative purposes, provided as a guide to completing this spreadsheet. Respondent may provide explanatory notes and additional information at its discretion.
2. For hospitals, please include professional and technical/facility revenue components.
3. Please include POS payments under HMO.
4. Please include Indemnity payments under PPO.
5. **P4P Contracts** are pay for performance arrangements with a public or commercial payer that reimburse providers for achieving certain quality or efficiency benchmarks. For purposes of this excel, P4P Contracts do not include Risk Contracts.
6. **Risk Contracts** are contracts with a public or commercial payer for payment for health care services that incorporate a per member per month budget against which claims costs are settled for purposes of determining the withhold returned, surplus paid, and/or deficit charged to you, including contracts that do not subject you to any "downside" risk.
7. **FFS Arrangements** are those where a payer pays a provider for each service rendered, based on an agreed upon price for each service. For purposes of this excel, FFS Arrangements do not include payments under P4P Contracts or Risk Contracts.
8. **Other Revenue Arrangements** are arrangements for revenue under P4P Contracts, Risk Contracts, or FFS Arrangements other than those categories already identified, such as management fees and supplemental fees (and other non-claims based, non-incentive, non-surplus/deficit, non-quality bonus revenue).
9. **Claims-Based Revenue** is the total revenue that a provider received from a public or commercial payer under a P4P Contract or a Risk Contract for each service rendered, based on an agreed upon price for each service before any retraction for risk settlement is made.
10. **Incentive-Based Revenue** is the total revenue a provider received under a P4P contract that is related to quality or efficiency targets or benchmarks established by a public or commercial payer.
11. **Budget Surplus/(Deficit) Revenue** is the total revenue a provider received or was retracted upon settlement of the efficiency-related budgets or benchmarks established in a Risk Contract.
12. **Quality Incentive Revenue** is the total revenue that a provider received from a public or commercial payer under a Risk Contract for quality-related targets or benchmarks established by a public or commercial payer.

2010 MGH

	P4P Contracts				Risk Contracts						FFS Arrangements		Other Revenue Arrangements		
	Claims-Based Revenue		Incentive-Based Revenue		Claims-Based Revenue		Budget Surplus/ (Deficit) Revenue		Quality Incentive Revenue		HMO	PPO	HMO	PPO	Both
	HMO	PPO	HMO	PPO	HMO	PPO	HMO	PPO	HMO	PPO					
Blue Cross Blue Shield	\$160,343,990		\$12,570,627								\$128,268,678	\$326,061,994			
Tufts Health Plan	\$45,001,711		\$2,206,003								\$29,015,487	\$49,327,890			
Harvard Pilgrim Health Care	\$55,338,246		\$3,185,768								\$40,849,936	\$58,762,021			
Fallon Community Health Plan											\$11,705,722				
CIGNA											\$35,929,630	\$1,277,042			
United Healthcare												\$55,272,784			
Aetna											\$52,540,022	\$14,894,465			
Other Commercial												\$139,406,674			
Total Commercial	\$260,683,947		\$17,962,399								\$298,309,475	\$645,002,869			
Network Health											\$27,779,889				
Neighborhood Health Plan											\$25,114,773				
BMC HealthNet, Inc.											\$1,975,375				
Health New England															
Fallon Community Health Plan															
Other Managed Medicaid															
Total Managed Medicaid											\$54,870,038				
Mass Health											\$86,524,913				
Tufts Medicare Preferred											\$21,395,692				
Blue Cross Senior Options											\$5,639,503				
Other Comm Medicare											\$16,378,411	\$8,560,959			
Commercial Medicare Subtotal											\$43,413,606	\$8,560,959			
Medicare¹												\$443,384,961			
Other¹												\$ 104,811,488			
GRAND TOTAL	\$260,683,947		\$17,962,399								\$483,118,032	\$1,201,760,277			

Notes:

Revenue based on payments minus denials, bad debt, free care surcharge, and uncompensated care assessment
Other Commercial Primarily includes Coventry, UniCare GIC, NHP Commercial, PHCS , One Health, and other smaller payers.
The HMO/PPO split of other commercial is an estimate due to data limitations, in total it is accurate
Data includes MGH, BWH, NSMC, NWH, BWFH, MGPO, BWPO, NSPG, and NWAS
Payer line information for McLean, Spaulding Network, MVH, and NCH is not available. They represent ~8% of total PHS NPSR
1. Medicare and Other Revenue are neither HMO or PPO

2011 MGH

	P4P Contracts				Risk Contracts					FFS Arrangements		Other Revenue Arrangements		
	Claims-Based Revenue		Incentive-Based Revenue		Claims-Based Revenue		Budget Surplus/ (Deficit) Revenue		Quality Incentive Revenue	HMO	PPO	HMO	PPO	Both
	HMO	PPO	HMO	PPO	HMO	PPO	HMO	PPO	HMO					
Blue Cross Blue Shield	\$168,175,513		\$14,560,654							\$104,376,027	\$345,316,057			
Tufts Health Plan	\$46,758,491		\$3,163,667							\$28,814,581	\$63,919,788			
Harvard Pilgrim Health Care	\$57,526,526		\$3,711,247							\$46,104,252	\$70,550,821			
Fallon Community Health Plan										\$11,408,047				
CIGNA										\$40,512,432	\$665,453			
United Healthcare											\$65,720,814			
Aetna										\$60,666,699	\$13,682,241			
Other Commercial											\$152,437,288			
Total Commercial	\$272,460,530		\$21,435,568							\$291,882,039	\$712,292,462			
Network Health										\$33,165,654				
Neighborhood Health Plan										\$30,636,554				
BMC HealthNet, Inc.										\$1,983,182				
Health New England														
Fallon Community Health Plan														
Other Managed Medicaid														
Total Managed Medicaid										\$65,785,390				
Mass Health										\$78,874,585				
Tufts Medicare Preferred										\$20,749,520				
Blue Cross Senior Options										\$4,992,612				
Other Comm Medicare										\$6,207,945	\$11,912,406			
Commercial Medicare Subtotal										\$31,950,077	\$11,912,406			
Medicare¹											\$485,062,779			
Other¹											\$ 101,991,496			
GRAND TOTAL	\$272,460,530		\$21,435,568							\$468,492,090	\$1,311,259,143			

Notes:

Revenue based on payments minus denials, bad debt, free care surcharge, and uncompensated care assessment

Other Commercial Primarily includes Coventry, UniCare GIC, NHP Commercial, PHCS , One Health, and other smaller payers.

The HMO/PPO split of other commercial is an estimate due to data limitations, in total it is accurate

Data includes MGH, BWH, NSMC, NWH, BWFH, MGPO, BWPO, NSPG, and NWAS

Payer line information for McLean, Spaulding Network, MVH, and NCH is not available. They represent ~8% of total PHS NPSR

1. Medicare and Other Revenue are neither HMO or PPO

2012 MGH

	P4P Contracts				Risk Contracts						FFS Arrangements		Other Revenue Arrangements		
	Claims-Based Revenue		Incentive-Based Revenue		Claims-Based Revenue		Budget Surplus/ (Deficit) Revenue		Quality Incentive Revenue		HMO	PPO	HMO	PPO	Both
	HMO	PPO	HMO	PPO	HMO	PPO	HMO	PPO	HMO	PPO					
Blue Cross Blue Shield	\$41,900,125		\$3,783,917		\$99,189,247		n/a		2012 not yet settled		\$96,122,539	\$447,808,181			
Tufts Health Plan	\$11,633,991		\$846,549		\$22,658,214		n/a		2012 not yet settled		\$33,171,363	\$80,236,766			
Harvard Pilgrim Health Care	\$14,334,613		\$974,830		\$24,579,834		n/a		2012 not yet settled		\$73,234,195	\$83,558,053			
Fallon Community Health Plan											\$10,972,470				
CIGNA											\$54,673,359	\$965,616			
United Healthcare												\$71,936,536			
Aetna											\$68,126,505	\$13,909,486			
Other Commercial												\$151,879,348			
Total Commercial	\$67,868,729		\$5,605,296		\$146,427,295						\$336,300,431	\$850,293,986			
Network Health											\$26,069,067				
Neighborhood Health Plan											\$22,572,360				
BMC HealthNet, Inc.											\$1,399,124				
Health New England															
Fallon Community Health Plan															
Other Managed Medicaid															
Total Managed Medicaid											\$50,040,551				
Mass Health											\$78,862,122				
Tufts Medicare Preferred											\$22,092,772				
Blue Cross Senior Options											\$7,189,243				
Other Comm Medicare											\$3,351,741	\$15,196,472			
Commercial Medicare Subtotal											\$32,633,756	\$15,196,472			
Medicare¹						\$95,135,424						\$447,239,297			
Other¹												\$109,626,432			
GRAND TOTAL	\$67,868,729		\$5,605,296		\$146,427,295	\$95,135,424					\$497,836,859	\$1,422,356,186			

Notes:

Revenue based on payments minus denials, bad debt, free care surcharge, and uncompensated care assessment
Other Commercial Primarily includes Coventry, UniCare GIC, NHP Commercial, PHCS , One Health, and other smaller payers.
The HMO/PPO split of other commercial is an estimate due to data limitations, in total it is accurate
Data includes MGH, BWH, NSMC, NWH, BWFH, MGPO, BWPO, NSPG, and NWAS
Payer line information for McLean, Spaulding Network, MVH, and NCH is not available. They represent ~8% of total PHS NPSR
1. Medicare and Other Revenue are neither HMO or PPO

2013 MGH

	P4P Contracts				Risk Contracts						FFS Arrangements		Other Revenue Arrangements		
	Claims-Based Revenue		Incentive-Based Revenue		Claims-Based Revenue		Budget Surplus/ (Deficit) Revenue		Quality Incentive Revenue		HMO	PPO	HMO	PPO	Both
	HMO	PPO	HMO	PPO	HMO	PPO	HMO	PPO	HMO	PPO					
Blue Cross Blue Shield					\$106,823,971		n/a		2013 not yet settled		\$92,026,351	\$464,776,253			
Tufts Health Plan					\$30,472,996		n/a		2013 not yet settled		\$41,218,273	\$85,646,766			
Harvard Pilgrim Health Care					\$33,739,919		n/a		2013 not yet settled		\$76,655,345	\$91,262,098			
Fallon Community Health Plan											\$11,770,472				
CIGNA											\$55,241,156	\$1,413,247			
United Healthcare												\$71,583,203			
Aetna											\$76,548,435	\$16,270,990			
Other Commercial												\$153,659,932			
Total Commercial					\$171,036,886		\$0				\$353,460,032	\$884,612,488			
Network Health											\$33,003,774				
Neighborhood Health Plan											\$26,441,847				
BMC HealthNet, Inc.											\$3,505,819				
Health New England															
Fallon Community Health Plan															
Other Managed Medicaid															
Total Managed Medicaid											\$62,951,439				
Mass Health											\$81,445,911				
Tufts Medicare Preferred											\$24,436,841				
Blue Cross Senior Options											\$6,838,898				
Other Comm Medicare											\$5,665,856	\$18,134,111			
Commercial Medicare Subtotal											\$36,941,595	\$18,134,111			
Medicare ¹						\$108,991,640						\$451,363,993			
Other ¹												\$128,798,975			
GRAND TOTAL	\$0		\$0		\$171,036,886	\$108,991,640					\$534,798,977	\$1,482,909,568			

Notes:

Revenue based on payments minus denials, bad debt, free care surcharge, and uncompensated care assessment

Other Commercial Primarily includes Coventry, UniCare GIC, NHP Commercial, PHCS, One Health, and other smaller payers.

The HMO/PPO split of other commercial is an estimate due to data limitations, in total it is accurate

Data include MGH, BWH, NSMC, NWH, BWFH, MGPO, BWPO, NSPG, NWAS, and PHS

Payer line information for McLean, Spaulding Network, MVH, and NCH is not available. They represent ~8% of total PHS NPSR

1. Medicare and Other Revenue are neither HMO or PPO

MGH Only

Does not include MD data

Fiscal Year Data: October - September (based on reconciled data)

Net Patient Service Revenue = Contracted Payer Net Revenue - Free Care - Bad Debt - Denial - HSN Assessme

Net Margin = Net Patient Service Revenue - Total Costs (Direct + Indirect)

Facility	MGH
Fiscal Year	2010

Row Labels	Column Labels		
	Commercial		Outpatient
	Inpatient		
	Net Patient Service Revenue	Net Margin	Net Patient Service Revenue
Cancer	\$ 117,408,160	\$ 32,101,840	
Cardiac	\$ 71,521,376	\$ 20,297,014	
Orthopedics	\$ 39,927,424	\$ 11,508,281	
Gastroenterology	\$ 34,089,797	\$ 10,923,346	
Neurosurgery	\$ 24,414,538	\$ 7,412,920	
Other Surgery	\$ 23,235,560	\$ 5,396,265	
Neurology	\$ 14,077,425	\$ 4,376,105	
Pediatrics	\$ 27,291,674	\$ 4,161,380	
Vascular	\$ 15,011,532	\$ 3,591,830	
Endocrine	\$ 10,267,899	\$ 3,498,750	
Infectious Disease	\$ 11,429,855	\$ 2,764,694	
Obstetrics	\$ 31,677,184	\$ 2,285,775	
Thoracic	\$ 5,465,357	\$ 2,260,002	
NICU	\$ 17,433,535	\$ 1,889,263	
Other Medicine	\$ 17,079,722	\$ 1,776,892	
Respiratory	\$ 8,690,401	\$ 1,688,892	
Burns	\$ 2,912,859	\$ 1,164,810	
Tracheostomy	\$ 17,100,679	\$ 1,082,394	
Urology	\$ 3,772,384	\$ 816,473	
Renal	\$ 5,123,740	\$ 670,225	
Trauma	\$ 4,328,869	\$ 665,567	
Gynecology	\$ 2,973,412	\$ 450,018	
Major Procedures			\$ 50,266,007
All Other			\$ 1,972,917
Therapies			\$ 11,485,799
All Other Default			\$ 265,536
Treatments			\$ 252,003,081
Other Diagnostics			\$ 18,762,874
Emergency			\$ 26,575,415
Minor Procedures			\$ 14,958,173
Major Imaging			\$ 79,638,209
Ambulatory Surgery			\$ 82,172,683
Nonpatient Services			
Pharmacy			\$ 4,065,125

Observation				\$	20,960,187
Psychiatric Services				\$	8,562,454
Visits				\$	71,881,268
Minor Imaging				\$	31,828,822
Clinical/Path Labs				\$	38,548,053
Mental Health	\$	2,778,708	\$	(1,431,911)	
Grand Total	\$	508,012,088	\$	119,350,823	\$ 713,946,602

ent + HSN Receipts

Commercial Outpatient Net Margin	Government Inpatient Net Patient Service Revenue	Net Margin	Outpatient Net Patient Service Revenue
	\$ 70,909,510	\$ (15,951,141)	
	\$ 87,912,950	\$ (16,144,369)	
	\$ 37,314,373	\$ (3,815,070)	
	\$ 29,058,375	\$ (6,077,052)	
	\$ 15,638,855	\$ (1,607,198)	
	\$ 17,619,351	\$ (5,113,965)	
	\$ 15,463,577	\$ (3,675,958)	
	\$ 9,335,851	\$ (5,031,042)	
	\$ 23,992,003	\$ (4,988,508)	
	\$ 7,936,880	\$ (2,225,247)	
	\$ 12,408,876	\$ (3,660,670)	
	\$ 7,877,121	\$ (5,113,277)	
	\$ 2,994,266	\$ (381,639)	
	\$ 7,729,216	\$ (3,167,301)	
	\$ 23,211,158	\$ (11,793,168)	
	\$ 17,403,728	\$ (5,149,376)	
	\$ 3,539,700	\$ (709,432)	
	\$ 14,762,806	\$ (5,443,062)	
	\$ 3,858,586	\$ (435,438)	
	\$ 11,844,131	\$ (3,944,499)	
	\$ 2,025,992	\$ (615,115)	
	\$ 1,066,211	\$ (192,848)	
\$ 22,580,127			\$ 17,494,108
\$ (1,447,915)			\$ 983,932
\$ (1,762,773)			\$ 4,848,809
\$ (396,435)			\$ 329,523
\$ 146,665,610			\$ 56,208,185
\$ 6,445,266			\$ 5,991,737
\$ 7,462,379			\$ 10,547,477
\$ 4,450,432			\$ 5,869,754
\$ 53,665,323			\$ 18,173,086
\$ 24,687,732			\$ 15,832,588
\$ 1,518,775			\$ 1,535,104

\$ 10,848,542			\$ 5,073,870
\$ (5,315,880)			\$ 7,605,920
\$ (16,537,912)			\$ 47,262,782
\$ 15,784,255			\$ 7,745,523
\$ 18,583,896			\$ 7,590,459
	\$ 5,547,243	\$ (4,267,946)	
\$ 287,231,420	\$ 429,450,760	\$ (109,503,322)	\$ 213,092,859

Government Outpatient Net Margin	Other Inpatient Net Patient Service Revenue	Net Margin	Outpatient Net Patient Service Revenue
	\$	9,195,747	\$ 1,277,744
	\$	5,637,175	\$ (36,783)
	\$	7,473,741	\$ 1,634,070
	\$	3,326,467	\$ (219,239)
	\$	2,713,998	\$ 627,916
	\$	6,480,188	\$ (85,558)
	\$	1,873,352	\$ 68,783
	\$	2,393,374	\$ (691,441)
	\$	1,110,450	\$ 158,224
	\$	554,314	\$ (531,842)
	\$	732,477	\$ (25,245)
	\$	220,383	\$ (61,857)
	\$	775,270	\$ 172,201
	\$	134,890	\$ (155,066)
	\$	2,833,164	\$ (2,122,272)
	\$	661,351	\$ 36,126
	\$	1,638,223	\$ (261,639)
	\$	2,884,060	\$ (592,154)
	\$	1,286,551	\$ 368,472
	\$	623,578	\$ (52,840)
	\$	1,324,992	\$ 290,669
	\$	271,843	\$ (101,768)
\$ (4,450,856)			\$ 1,961,096
\$ (881,764)			\$ 83,117
\$ (3,208,624)			\$ 593,246
\$ 4,786			\$ 9,667
\$ (21,403,679)			\$ 11,483,266
\$ (2,423,381)			\$ 1,237,929
\$ (7,073,763)			\$ 4,174,839
\$ (3,170,394)			\$ 739,020
\$ (1,088,226)			\$ 5,574,596
\$ (6,674,529)			\$ 6,575,444
			\$ 3,575,128
\$ (1,471,820)			\$ 121,388

\$ (5,395,997)			\$	1,836,305
\$ (9,742,618)			\$	204,656
\$ (32,887,124)			\$	2,940,159
\$ (745,347)			\$	1,072,093
\$ (2,748,981)			\$	2,101,583
	\$ 593,224	\$ (533,456)		
\$ (103,362,317)	\$ 54,738,813	\$ (836,956)	\$	44,283,533

Other Outpatient Net Margin	Total Inpatient Net Patient Service Revenue	Net Margin	Outpatient Net Patient Service Revenue	Net Margin
	\$ 197,513,417	\$ 17,428,443	\$ -	\$ -
	\$ 165,071,501	\$ 4,115,862	\$ -	\$ -
	\$ 84,715,538	\$ 9,327,281	\$ -	\$ -
	\$ 66,474,640	\$ 4,627,055	\$ -	\$ -
	\$ 42,767,391	\$ 6,433,638	\$ -	\$ -
	\$ 47,335,098	\$ 196,742	\$ -	\$ -
	\$ 31,414,353	\$ 768,930	\$ -	\$ -
	\$ 39,020,899	\$ (1,561,102)	\$ -	\$ -
	\$ 40,113,986	\$ (1,238,454)	\$ -	\$ -
	\$ 18,759,093	\$ 741,660	\$ -	\$ -
	\$ 24,571,208	\$ (921,222)	\$ -	\$ -
	\$ 39,774,687	\$ (2,889,358)	\$ -	\$ -
	\$ 9,234,894	\$ 2,050,564	\$ -	\$ -
	\$ 25,297,640	\$ (1,433,104)	\$ -	\$ -
	\$ 43,124,045	\$ (12,138,549)	\$ -	\$ -
	\$ 26,755,480	\$ (3,424,358)	\$ -	\$ -
	\$ 8,090,782	\$ 193,738	\$ -	\$ -
	\$ 34,747,545	\$ (4,952,822)	\$ -	\$ -
	\$ 8,917,522	\$ 749,507	\$ -	\$ -
	\$ 17,591,449	\$ (3,327,114)	\$ -	\$ -
	\$ 7,679,853	\$ 341,120	\$ -	\$ -
	\$ 4,311,466	\$ 155,401	\$ -	\$ -
\$ 346,183	\$ -	\$ -	\$ 69,721,211	\$ 18,475,455
\$ (210,550)	\$ -	\$ -	\$ 3,039,966	\$ (2,540,229)
\$ (974,297)	\$ -	\$ -	\$ 16,927,855	\$ (5,945,694)
\$ (30,052)	\$ -	\$ -	\$ 604,726	\$ (421,701)
\$ 5,521,922	\$ -	\$ -	\$ 319,694,533	\$ 130,783,854
\$ 421,706	\$ -	\$ -	\$ 25,992,540	\$ 4,443,591
\$ (1,185,368)	\$ -	\$ -	\$ 41,297,731	\$ (796,752)
\$ (720,403)	\$ -	\$ -	\$ 21,566,948	\$ 559,635
\$ 2,828,044	\$ -	\$ -	\$ 103,385,891	\$ 55,405,141
\$ (520,240)	\$ -	\$ -	\$ 104,580,714	\$ 17,492,964
\$ (3,493,215)	\$ -	\$ -	\$ 3,575,128	\$ (3,493,215)
\$ (60,513)	\$ -	\$ -	\$ 5,721,617	\$ (13,558)

\$ 151,295	\$ -	\$ -	\$ 27,870,361	\$ 5,603,841
\$ (784,186)	\$ -	\$ -	\$ 16,373,030	\$ (15,842,684)
\$ (6,018,735)	\$ -	\$ -	\$ 122,084,210	\$ (55,443,771)
\$ (311,561)	\$ -	\$ -	\$ 40,646,438	\$ 14,727,347
\$ 442,601	\$ -	\$ -	\$ 48,240,095	\$ 16,277,516
\$ 8,919,176	\$ (6,233,313)	\$ -	\$ -	\$ -
\$ (4,597,366)	\$ 992,201,661	\$ 9,010,546	\$ 971,322,995	\$ 179,271,737

MGH Only

Does not include MD data

Fiscal Year Data: October - September (based on reconciled data)

Net Patient Service Revenue = Contracted Payer Net Revenue - Free Care - Bad Debt - Denial - HSN Assessme

Net Margin = Net Patient Service Revenue - Total Costs (Direct + Indirect)

Facility	MGH
Fiscal Year	2011

Row Labels	Column Labels		
	Commercial		Outpatient
	Inpatient		
	Net Patient Service Revenue	Net Margin	Net Patient Service Revenue
Cancer	\$ 156,790,531	\$ 52,340,793	
Cardiac	\$ 74,173,144	\$ 23,325,783	
Orthopedics	\$ 45,791,023	\$ 15,251,748	
Gastroenterology	\$ 36,803,579	\$ 12,338,767	
Neurosurgery	\$ 26,801,170	\$ 9,296,652	
Pediatrics	\$ 31,654,808	\$ 5,435,614	
Other Surgery	\$ 26,729,433	\$ 5,007,377	
Obstetrics	\$ 35,623,541	\$ 4,507,907	
Vascular	\$ 16,083,487	\$ 4,129,321	
Neurology	\$ 12,800,852	\$ 3,897,261	
Endocrine	\$ 11,462,212	\$ 3,509,667	
Tracheostomy	\$ 17,580,508	\$ 3,381,491	
Infectious Disease	\$ 10,219,214	\$ 2,636,470	
Other Medicine	\$ 15,533,789	\$ 2,480,632	
Respiratory	\$ 8,369,837	\$ 1,978,584	
Thoracic	\$ 5,247,481	\$ 1,967,159	
NICU	\$ 17,836,107	\$ 1,265,751	
Renal	\$ 5,691,904	\$ 1,024,975	
Burns	\$ 3,779,552	\$ 932,247	
Urology	\$ 3,853,831	\$ 814,167	
Trauma	\$ 4,783,125	\$ 627,753	
Gynecology	\$ 1,419,413	\$ 276,142	
Psychiatric Services			\$ 9,366,732
Minor Imaging			\$ 32,976,852
Major Procedures			\$ 55,210,855
All Other Default			\$ 259,864
Emergency			\$ 25,946,797
Other Diagnostics			\$ 19,398,407
Nonpatient Services			
Treatments			\$ 236,757,768
Therapies			\$ 13,675,919
All Other			\$ 2,382,788
Observation			\$ 21,876,479
Visits			\$ 74,175,336

Clinical/Path Labs				\$	43,704,925
Minor Procedures				\$	17,927,734
Ambulatory Surgery				\$	95,874,662
Major Imaging				\$	70,529,897
Pharmacy				\$	6,149,390
Mental Health	\$	2,827,654	\$	(1,641,721)	
Grand Total	\$	571,856,197	\$	154,784,542	\$ 726,214,402

ent + HSN Receipts

Commercial Outpatient Net Margin	Government Inpatient Net Patient Service Revenue	Net Margin	Outpatient Net Patient Service Revenue
	\$ 84,786,999	\$ (19,145,818)	
	\$ 93,854,319	\$ (18,854,004)	
	\$ 38,302,266	\$ (5,330,144)	
	\$ 30,395,909	\$ (6,301,357)	
	\$ 14,813,289	\$ (2,876,152)	
	\$ 8,430,093	\$ (5,901,206)	
	\$ 15,275,756	\$ (4,515,792)	
	\$ 9,628,457	\$ (6,066,675)	
	\$ 25,945,248	\$ (8,237,452)	
	\$ 13,728,927	\$ (4,479,017)	
	\$ 8,057,557	\$ (3,026,975)	
	\$ 18,615,629	\$ (5,237,847)	
	\$ 14,139,602	\$ (4,781,390)	
	\$ 21,251,629	\$ (12,494,243)	
	\$ 18,133,124	\$ (5,916,027)	
	\$ 3,664,388	\$ (1,416,458)	
	\$ 7,418,553	\$ (3,383,057)	
	\$ 11,405,889	\$ (3,558,967)	
	\$ 2,226,008	\$ (777,187)	
	\$ 4,206,489	\$ (777,246)	
	\$ 1,990,583	\$ (1,249,756)	
	\$ 754,521	\$ (235,436)	
\$ (3,524,694)			\$ 7,206,781
\$ 16,121,142			\$ 8,036,884
\$ 25,197,193			\$ 18,579,761
\$ 63,818			\$ 57,076
\$ 6,838,040			\$ 10,257,173
\$ 7,261,619			\$ 6,495,745
\$ 125,635,774			\$ 63,998,918
\$ 230,647			\$ 5,416,526
\$ (1,256,230)			\$ 1,198,399
\$ 11,295,843			\$ 6,452,594
\$ (15,086,433)			\$ 48,618,546

\$ 23,391,900			\$ 7,920,846
\$ 6,162,195			\$ 6,025,231
\$ 37,532,511			\$ 17,785,249
\$ 43,836,836			\$ 16,859,165
\$ 2,449,031			\$ 2,261,066
	\$ 5,431,191	\$ (5,070,795)	
\$ 286,149,191	\$ 452,456,425	\$ (129,633,000)	\$ 227,169,963

Government Outpatient Net Margin	Other Inpatient Net Patient Service Revenue	Net Margin	Outpatient Net Patient Service Revenue
	\$ 10,705,994	\$ 621,933	
	\$ 5,959,516	\$ (19,774)	
	\$ 6,281,951	\$ 1,134,325	
	\$ 3,134,652	\$ (346,498)	
	\$ 2,620,894	\$ 309,384	
	\$ 3,092,782	\$ (589,343)	
	\$ 3,046,445	\$ 156,071	
	\$ 204,236	\$ (257,743)	
	\$ 1,285,073	\$ 128,386	
	\$ 1,488,756	\$ (510,336)	
	\$ 528,763	\$ (486,674)	
	\$ 1,410,252	\$ (333,742)	
	\$ 686,863	\$ (184,658)	
	\$ 3,416,626	\$ (2,543,714)	
	\$ 579,089	\$ (350,929)	
	\$ 302,377	\$ 39,381	
	\$ 142,430	\$ 19,112	
	\$ 750,990	\$ (107,947)	
	\$ 1,486,720	\$ (560,702)	
	\$ 1,088,271	\$ 373,987	
	\$ 822,799	\$ (414,736)	
	\$ 86,548	\$ (95,258)	
\$ (9,369,970)			\$ 264,892
\$ (1,021,452)			\$ 972,001
\$ (5,432,256)			\$ 1,954,345
\$ (48,500)			\$ 13,243
\$ (7,089,840)			\$ 4,176,773
\$ (2,708,275)			\$ 1,270,612
			\$ 3,962,637
\$ (25,398,549)			\$ 12,839,470
\$ (3,109,956)			\$ 613,887
\$ (951,301)			\$ 144,551
\$ (6,797,998)			\$ 2,221,822
\$ (34,597,207)			\$ 2,960,060

\$	(3,013,636)			\$	2,025,737
\$	(2,829,844)			\$	829,704
\$	(7,345,312)			\$	7,112,016
\$	(3,871,849)			\$	4,890,207
\$	(2,273,187)			\$	99,487
	\$	476,874	\$ (798,519)		
\$ (115,859,134)	\$	49,598,902	\$ (4,817,995)	\$	46,351,443

Other Outpatient Net Margin	Total Inpatient Net Patient Service Revenue	Net Margin	Outpatient Net Patient Service Revenue	Net Margin
	\$ 252,283,523	\$ 33,816,907	\$ -	\$ -
	\$ 173,986,979	\$ 4,452,005	\$ -	\$ -
	\$ 90,375,240	\$ 11,055,929	\$ -	\$ -
	\$ 70,334,140	\$ 5,690,912	\$ -	\$ -
	\$ 44,235,353	\$ 6,729,884	\$ -	\$ -
	\$ 43,177,683	\$ (1,054,935)	\$ -	\$ -
	\$ 45,051,634	\$ 647,655	\$ -	\$ -
	\$ 45,456,234	\$ (1,816,511)	\$ -	\$ -
	\$ 43,313,808	\$ (3,979,745)	\$ -	\$ -
	\$ 28,018,536	\$ (1,092,092)	\$ -	\$ -
	\$ 20,048,532	\$ (3,982)	\$ -	\$ -
	\$ 37,606,389	\$ (2,190,099)	\$ -	\$ -
	\$ 25,045,679	\$ (2,329,578)	\$ -	\$ -
	\$ 40,202,045	\$ (12,557,324)	\$ -	\$ -
	\$ 27,082,050	\$ (4,288,372)	\$ -	\$ -
	\$ 9,214,247	\$ 590,082	\$ -	\$ -
	\$ 25,397,090	\$ (2,098,194)	\$ -	\$ -
	\$ 17,848,783	\$ (2,641,938)	\$ -	\$ -
	\$ 7,492,279	\$ (405,642)	\$ -	\$ -
	\$ 9,148,592	\$ 410,909	\$ -	\$ -
	\$ 7,596,508	\$ (1,036,739)	\$ -	\$ -
	\$ 2,260,482	\$ (54,551)	\$ -	\$ -
\$ (723,019)	\$ -	\$ -	\$ 16,838,405	\$ (13,617,684)
\$ (122,129)	\$ -	\$ -	\$ 41,985,736	\$ 14,977,561
\$ 67,644	\$ -	\$ -	\$ 75,744,960	\$ 19,832,581
\$ (3,908)	\$ -	\$ -	\$ 330,183	\$ 11,409
\$ (1,136,886)	\$ -	\$ -	\$ 40,380,743	\$ (1,388,687)
\$ 350,660	\$ -	\$ -	\$ 27,164,764	\$ 4,904,005
\$ (2,946,786)	\$ -	\$ -	\$ 3,962,637	\$ (2,946,786)
\$ 6,178,688	\$ -	\$ -	\$ 313,596,157	\$ 106,415,913
\$ (671,001)	\$ -	\$ -	\$ 19,706,332	\$ (3,550,310)
\$ (138,166)	\$ -	\$ -	\$ 3,725,737	\$ (2,345,697)
\$ 383,360	\$ -	\$ -	\$ 30,550,895	\$ 4,881,204
\$ (6,326,421)	\$ -	\$ -	\$ 125,753,942	\$ (56,010,061)

\$ 467,538	\$	-	\$	-	\$	53,651,509	\$	20,845,801
\$ (1,033,871)	\$	-	\$	-	\$	24,782,670	\$	2,298,481
\$ (76,332)	\$	-	\$	-	\$	120,771,927	\$	30,110,866
\$ 1,418,053	\$	-	\$	-	\$	92,279,268	\$	41,383,039
\$ (180,782)	\$	-	\$	-	\$	8,509,943	\$	(4,939)
	\$	8,735,719	\$	(7,511,036)	\$	-	\$	-
\$ (4,493,358)	\$	1,073,911,524	\$	20,333,547	\$	999,735,808	\$	165,796,699

MGH Only

Does not include MD data

Fiscal Year Data: October - September (based on reconciled data)

Net Patient Service Revenue = Contracted Payer Net Revenue - Free Care - Bad Debt - Denial - HSN Assessme

Net Margin = Net Patient Service Revenue - Total Costs (Direct + Indirect)

Facility	MGH
Fiscal Year	2012

Row Labels	Column Labels		
	Commercial		Outpatient
	Inpatient		
	Net Patient Service Revenue	Net Margin	Net Patient Service Revenue
Cancer	\$ 173,830,492	\$ 53,572,488	
Cardiac	\$ 77,672,341	\$ 24,447,564	
Orthopedics	\$ 46,878,521	\$ 14,598,693	
Gastroenterology	\$ 39,078,473	\$ 13,843,103	
Neurosurgery	\$ 29,837,823	\$ 8,878,331	
Obstetrics	\$ 39,056,432	\$ 6,433,289	
Neurology	\$ 16,622,332	\$ 5,337,434	
Pediatrics	\$ 33,886,536	\$ 5,216,896	
Other Surgery	\$ 29,716,895	\$ 5,077,672	
Other Medicine	\$ 17,567,294	\$ 4,633,120	
Vascular	\$ 12,564,698	\$ 4,365,097	
Endocrine	\$ 12,116,416	\$ 4,361,766	
Tracheostomy	\$ 22,835,112	\$ 2,835,433	
Infectious Disease	\$ 12,694,227	\$ 2,776,803	
Thoracic	\$ 6,697,631	\$ 2,525,324	
Respiratory	\$ 7,665,629	\$ 2,468,534	
Renal	\$ 9,098,367	\$ 2,092,368	
Urology	\$ 3,990,406	\$ 1,250,782	
Trauma	\$ 4,453,159	\$ 1,003,176	
NICU	\$ 17,568,312	\$ 952,411	
Gynecology	\$ 1,590,590	\$ 233,249	
Mental Health	\$ 4,473,891	\$ 169,433	
All Other Default			\$ 296,639
Treatments			\$ 239,830,368
Minor Procedures			\$ 18,319,630
Other Diagnostics			\$ 20,305,622
All Other			\$ 3,438,619
Major Procedures			\$ 58,730,409
Observation			\$ 26,939,159
Therapies			\$ 15,205,165
Minor Imaging			\$ 37,962,257
Ambulatory Surgery			\$ 105,595,748
Clinical/Path Labs			\$ 46,718,009
Major Imaging			\$ 82,174,565

Emergency			\$	28,486,566
Pharmacy			\$	6,368,897
Visits			\$	84,095,011
Nonpatient Services				
Psychiatric Services			\$	9,005,795
Burns	\$	3,127,700	\$ (64,704)	
Grand Total	\$	623,023,275	\$ 167,008,262	\$ 783,472,461

ent + HSN Receipts

Commercial Outpatient Net Margin	Government Inpatient Net Patient Service Revenue	Net Margin	Outpatient Net Patient Service Revenue
	\$	93,649,858	\$ (22,015,932)
	\$	96,152,686	\$ (8,144,689)
	\$	42,892,427	\$ (2,916,088)
	\$	30,769,453	\$ (6,623,778)
	\$	20,701,587	\$ (3,125,837)
	\$	9,374,119	\$ (5,067,718)
	\$	15,023,327	\$ (4,389,198)
	\$	7,802,222	\$ (4,780,810)
	\$	17,632,281	\$ (5,781,261)
	\$	24,426,310	\$ (11,703,591)
	\$	22,344,519	\$ (5,089,240)
	\$	8,096,575	\$ (3,744,967)
	\$	14,231,651	\$ (10,439,334)
	\$	15,369,168	\$ (6,189,567)
	\$	3,617,836	\$ (408,628)
	\$	18,152,873	\$ (4,717,767)
	\$	12,778,049	\$ (4,213,732)
	\$	4,323,158	\$ (962,719)
	\$	1,598,246	\$ (1,444,687)
	\$	6,495,162	\$ (2,978,030)
	\$	755,917	\$ (177,046)
	\$	7,223,546	\$ (2,689,530)
\$ 28,459			\$ 88,944
\$ 123,690,170			\$ 65,659,125
\$ 6,316,053			\$ 6,365,956
\$ 8,459,822			\$ 6,791,097
\$ (1,259,555)			\$ 1,665,544
\$ 26,459,759			\$ 21,216,564
\$ 12,926,296			\$ 8,003,783
\$ 152,179			\$ 5,863,702
\$ 20,563,134			\$ 8,886,390
\$ 37,615,896			\$ 19,740,733
\$ 25,618,436			\$ 8,072,638
\$ 51,865,448			\$ 20,934,967

\$ 7,959,555			\$ 11,120,273
\$ 159,712			\$ 2,904,861
\$ (11,533,654)			\$ 51,645,310
\$ (3,511,836)			\$ 7,551,714
\$	3,505,116	\$ (2,162,379)	
\$ 305,509,875	\$ 476,916,086	\$ (119,766,527)	\$ 246,511,600

Government Outpatient Net Margin	Other Inpatient Net Patient Service Revenue	Net Margin	Outpatient Net Patient Service Revenue
	\$	10,449,512	\$ 126,830
	\$	10,240,434	\$ 779,333
	\$	7,207,349	\$ 1,572,516
	\$	2,715,005	\$ (553,463)
	\$	2,488,005	\$ 235,577
	\$	167,651	\$ (291,630)
	\$	1,614,962	\$ (255,424)
	\$	2,469,293	\$ (1,264,757)
	\$	3,933,984	\$ 66,676
	\$	2,976,501	\$ (2,514,366)
	\$	456,200	\$ (199,875)
	\$	883,884	\$ (647,025)
	\$	2,213,720	\$ (320,619)
	\$	1,264,196	\$ (707,040)
	\$	654,073	\$ (24,940)
	\$	413,114	\$ (666,744)
	\$	621,884	\$ (555,136)
	\$	1,281,269	\$ 450,863
	\$	1,032,475	\$ (433,565)
	\$	328,172	\$ 74,218
	\$	53,096	\$ (18,798)
	\$	1,181,412	\$ (709,854)
\$ (53,706)			\$ 22,595
\$ (28,751,558)			\$ 11,067,749
\$ (4,565,522)			\$ 1,094,923
\$ (2,873,197)			\$ 1,219,332
\$ (1,061,225)			\$ 188,491
\$ (4,864,117)			\$ 2,254,671
\$ (11,927,197)			\$ 2,351,569
\$ (4,128,207)			\$ 690,003
\$ (879,895)			\$ 1,155,303
\$ (12,215,607)			\$ 8,049,994
\$ (3,634,717)			\$ 1,970,720
\$ (4,148,997)			\$ 6,266,081

\$ (7,721,157)			\$	5,545,048
\$ (3,927,418)			\$	224,566
\$ (34,832,972)			\$	3,249,759
			\$	3,730,553
\$ (8,845,843)			\$	180,095
	\$ 1,398,725	\$ (850,498)		
\$ (134,431,337)	\$ 56,044,917	\$ (6,707,722)	\$	49,261,451

Other Outpatient Net Margin	Total Inpatient Net Patient Service Revenue	Net Margin	Outpatient Net Patient Service Revenue	Net Margin
	\$ 277,929,862	\$ 31,683,385	\$ -	\$ -
	\$ 184,065,460	\$ 17,082,208	\$ -	\$ -
	\$ 96,978,297	\$ 13,255,121	\$ -	\$ -
	\$ 72,562,931	\$ 6,665,862	\$ -	\$ -
	\$ 53,027,415	\$ 5,988,070	\$ -	\$ -
	\$ 48,598,201	\$ 1,073,940	\$ -	\$ -
	\$ 33,260,622	\$ 692,813	\$ -	\$ -
	\$ 44,158,051	\$ (828,671)	\$ -	\$ -
	\$ 51,283,160	\$ (636,912)	\$ -	\$ -
	\$ 44,970,104	\$ (9,584,837)	\$ -	\$ -
	\$ 35,365,416	\$ (924,017)	\$ -	\$ -
	\$ 21,096,875	\$ (30,227)	\$ -	\$ -
	\$ 39,280,482	\$ (7,924,520)	\$ -	\$ -
	\$ 29,327,591	\$ (4,119,803)	\$ -	\$ -
	\$ 10,969,541	\$ 2,091,755	\$ -	\$ -
	\$ 26,231,616	\$ (2,915,977)	\$ -	\$ -
	\$ 22,498,299	\$ (2,676,499)	\$ -	\$ -
	\$ 9,594,833	\$ 738,927	\$ -	\$ -
	\$ 7,083,880	\$ (875,076)	\$ -	\$ -
	\$ 24,391,646	\$ (1,951,401)	\$ -	\$ -
	\$ 2,399,604	\$ 37,405	\$ -	\$ -
	\$ 12,878,849	\$ (3,229,950)	\$ -	\$ -
\$ (23,072)	\$ -	\$ -	\$ 408,178	\$ (48,319)
\$ 4,418,097	\$ -	\$ -	\$ 316,557,242	\$ 99,356,708
\$ (895,481)	\$ -	\$ -	\$ 25,780,509	\$ 855,050
\$ 348,648	\$ -	\$ -	\$ 28,316,051	\$ 5,935,274
\$ (105,121)	\$ -	\$ -	\$ 5,292,655	\$ (2,425,901)
\$ 135,832	\$ -	\$ -	\$ 82,201,644	\$ 21,731,474
\$ 54,928	\$ -	\$ -	\$ 37,294,512	\$ 1,054,027
\$ (848,741)	\$ -	\$ -	\$ 21,758,870	\$ (4,824,769)
\$ (23,955)	\$ -	\$ -	\$ 48,003,950	\$ 19,659,284
\$ (1,458,285)	\$ -	\$ -	\$ 133,386,475	\$ 23,942,003
\$ 508,666	\$ -	\$ -	\$ 56,761,367	\$ 22,492,385
\$ 2,543,440	\$ -	\$ -	\$ 109,375,613	\$ 50,259,890

\$ (251,651)	\$ -	\$ -	\$ 45,151,888	\$ (13,254)
\$ (224,951)	\$ -	\$ -	\$ 9,498,324	\$ (3,992,657)
\$ (6,667,823)	\$ -	\$ -	\$ 138,990,079	\$ (53,034,449)
\$ (3,102,934)	\$ -	\$ -	\$ 3,730,553	\$ (3,102,934)
\$ (721,380)	\$ -	\$ -	\$ 16,737,604	\$ (13,079,059)
\$	\$ 8,031,541	\$ (3,077,581)	\$ -	\$ -
\$ (6,313,783)	\$ 1,155,984,277	\$ 40,534,014	\$ 1,079,245,512	\$ 164,764,755

MGH Only

Does not include MD data

Fiscal Year Data: October - September (based on reconciled data)

Net Patient Service Revenue = Contracted Payer Net Revenue - Free Care - Bad Debt - Denial - HSN Assessme

Net Margin = Net Patient Service Revenue - Total Costs (Direct + Indirect)

Facility	MGH
Fiscal Year	2013

Row Labels	Column Labels		
	Commercial		Outpatient
	Inpatient		
	Net Patient Service Revenue	Net Margin	Net Patient Service Revenue
Cancer	\$ 171,331,392	\$ 53,786,591	
Cardiac	\$ 83,387,651	\$ 29,179,118	
Orthopedics	\$ 50,889,682	\$ 17,390,265	
Neurosurgery	\$ 35,910,677	\$ 12,643,330	
Gastroenterology	\$ 34,415,544	\$ 12,242,338	
Other Surgery	\$ 30,226,255	\$ 8,590,781	
Obstetrics	\$ 40,325,764	\$ 7,514,879	
Pediatrics	\$ 33,542,031	\$ 7,305,483	
Endocrine	\$ 15,323,908	\$ 5,868,700	
Neurology	\$ 18,014,057	\$ 5,705,769	
Tracheostomy	\$ 18,867,602	\$ 5,680,556	
Other Medicine	\$ 19,462,248	\$ 5,149,062	
Vascular	\$ 14,049,674	\$ 4,966,993	
Infectious Disease	\$ 12,601,583	\$ 3,185,582	
NICU	\$ 23,619,511	\$ 2,607,037	
Respiratory	\$ 8,022,080	\$ 2,244,000	
Thoracic	\$ 5,739,465	\$ 2,189,536	
Renal	\$ 7,683,050	\$ 1,782,236	
Urology	\$ 5,045,500	\$ 1,431,277	
Trauma	\$ 4,948,534	\$ 1,076,227	
Burns	\$ 2,762,382	\$ 890,275	
Gynecology	\$ 1,282,523	\$ 238,389	
Minor Procedures			\$ 17,411,581
Nonpatient Services			
All Other			\$ 4,321,329
All Other Default			\$ 224,999
Observation			\$ 31,589,953
Other Diagnostics			\$ 20,197,775
Emergency			\$ 27,339,951
Clinical/Path Labs			\$ 47,230,466
Therapies			\$ 16,951,879
Visits			\$ 85,784,752
Major Procedures			\$ 61,378,201
Minor Imaging			\$ 35,389,953

Treatments				\$	214,936,572
Pharmacy				\$	5,414,677
Psychiatric Services				\$	6,961,280
Ambulatory Surgery				\$	112,418,577
Major Imaging				\$	80,414,081
Mental Health	\$	3,692,268	\$	(113,615)	
Grand Total	\$	641,143,380	\$	191,554,811	\$ 767,966,026

ent + HSN Receipts

Commercial Outpatient Net Margin	Government Inpatient Net Patient Service Revenue	Net Margin	Outpatient Net Patient Service Revenue
	\$ 103,063,500	\$ (33,028,384)	
	\$ 94,660,759	\$ (10,944,099)	
	\$ 47,137,540	\$ (5,242,946)	
	\$ 21,262,712	\$ (4,321,995)	
	\$ 30,422,443	\$ (7,419,894)	
	\$ 17,634,629	\$ (9,647,332)	
	\$ 7,879,082	\$ (6,748,289)	
	\$ 9,625,419	\$ (5,862,425)	
	\$ 8,154,936	\$ (3,668,010)	
	\$ 20,908,462	\$ (6,668,144)	
	\$ 17,240,432	\$ (6,916,533)	
	\$ 25,618,289	\$ (12,521,456)	
	\$ 22,300,230	\$ (4,270,794)	
	\$ 16,767,856	\$ (6,935,196)	
	\$ 8,188,936	\$ (3,667,518)	
	\$ 18,957,832	\$ (5,437,209)	
	\$ 4,196,272	\$ (1,056,979)	
	\$ 12,950,373	\$ (5,533,224)	
	\$ 3,987,888	\$ (728,637)	
	\$ 3,266,220	\$ (903,339)	
	\$ 2,913,702	\$ (343,851)	
	\$ 566,084	\$ (265,208)	
\$ 5,607,145			\$ 6,965,909
\$ (384,314)			\$ 2,330,287
\$ (35,482)			\$ 392,056
\$ 15,381,168			\$ 11,884,580
\$ 8,450,458			\$ 6,753,817
\$ 8,803,270			\$ 11,474,636
\$ 25,566,731			\$ 7,981,482
\$ 335,509			\$ 5,280,172
\$ (13,128,348)			\$ 53,552,427
\$ 27,039,631			\$ 23,342,037
\$ 18,798,576			\$ 8,796,323

\$ 100,232,387			\$	70,659,306
\$ (1,975,055)			\$	2,557,028
\$ (1,572,554)			\$	4,661,320
\$ 33,307,321			\$	22,823,043
\$ 48,119,465			\$	22,387,309
	\$	7,292,596	\$ (3,304,797)	
\$ 274,545,907	\$	504,996,191	\$ (145,436,260)	\$ 261,841,732

Government Outpatient Net Margin	Other Inpatient Net Patient Service Revenue	Net Margin	Outpatient Net Patient Service Revenue
	\$	13,459,043	\$ 2,545,570
	\$	8,965,554	\$ 1,176,697
	\$	7,779,049	\$ 1,744,709
	\$	3,528,033	\$ 27,653
	\$	2,442,457	\$ (385,138)
	\$	4,590,083	\$ 918,341
	\$	(498,679)	\$ (1,083,409)
	\$	3,612,302	\$ (910,217)
	\$	1,073,677	\$ (193,353)
	\$	1,378,336	\$ (143,660)
	\$	5,123,332	\$ 207,254
	\$	4,032,431	\$ (2,237,771)
	\$	1,485,584	\$ 329,548
	\$	1,270,574	\$ (353,166)
	\$	177,078	\$ (260,107)
	\$	952,769	\$ (338,417)
	\$	347,166	\$ 24,089
	\$	423,039	\$ (577,787)
	\$	1,195,235	\$ 498,916
	\$	1,593,762	\$ (33,073)
	\$	957,833	\$ (248,325)
	\$	10,851	\$ (8,314)
\$ (5,076,067)			\$ 1,061,076
			\$ 4,471,322
\$ (1,119,899)			\$ 279,666
\$ 162,314			\$ 35,258
\$ (13,310,187)			\$ 3,876,736
\$ (3,466,442)			\$ 1,486,995
\$ (8,488,098)			\$ 6,633,358
\$ (4,418,209)			\$ 2,132,694
\$ (4,791,490)			\$ 683,940
\$ (44,034,826)			\$ 3,797,173
\$ (5,688,974)			\$ 2,567,497
\$ (1,000,922)			\$ 1,345,378

\$ (32,900,175)			\$	12,848,679
\$ (6,456,318)			\$	397,868
\$ (6,694,276)			\$	188,282
\$ (16,648,382)			\$	9,117,582
\$ (5,604,451)			\$	5,857,053
\$	1,109,679	\$ (1,059,295)		
\$ (159,536,403)	\$ 65,009,187	\$ (359,258)	\$	56,780,555

Other Outpatient Net Margin	Total Inpatient Net Patient Service Revenue	Net Margin	Outpatient Net Patient Service Revenue	Net Margin
	\$ 287,853,935	\$ 23,303,777	\$ -	\$ -
	\$ 187,013,963	\$ 19,411,716	\$ -	\$ -
	\$ 105,806,270	\$ 13,892,028	\$ -	\$ -
	\$ 60,701,422	\$ 8,348,988	\$ -	\$ -
	\$ 67,280,444	\$ 4,437,306	\$ -	\$ -
	\$ 52,450,967	\$ (138,210)	\$ -	\$ -
	\$ 47,706,167	\$ (316,819)	\$ -	\$ -
	\$ 46,779,752	\$ 532,840	\$ -	\$ -
	\$ 24,552,521	\$ 2,007,337	\$ -	\$ -
	\$ 40,300,854	\$ (1,106,035)	\$ -	\$ -
	\$ 41,231,366	\$ (1,028,724)	\$ -	\$ -
	\$ 49,112,967	\$ (9,610,164)	\$ -	\$ -
	\$ 37,835,487	\$ 1,025,747	\$ -	\$ -
	\$ 30,640,013	\$ (4,102,780)	\$ -	\$ -
	\$ 31,985,525	\$ (1,320,588)	\$ -	\$ -
	\$ 27,932,681	\$ (3,531,626)	\$ -	\$ -
	\$ 10,282,903	\$ 1,156,646	\$ -	\$ -
	\$ 21,056,462	\$ (4,328,775)	\$ -	\$ -
	\$ 10,228,623	\$ 1,201,557	\$ -	\$ -
	\$ 9,808,516	\$ 139,815	\$ -	\$ -
	\$ 6,633,917	\$ 298,099	\$ -	\$ -
	\$ 1,859,458	\$ (35,134)	\$ -	\$ -
\$ (1,099,989)	\$ -	\$ -	\$ 25,438,566	\$ (568,911)
\$ (2,601,367)	\$ -	\$ -	\$ 4,471,322	\$ (2,601,367)
\$ (34,883)	\$ -	\$ -	\$ 6,931,282	\$ (1,539,097)
\$ 7,996	\$ -	\$ -	\$ 652,314	\$ 134,829
\$ 885,772	\$ -	\$ -	\$ 47,351,269	\$ 2,956,753
\$ 615,165	\$ -	\$ -	\$ 28,438,587	\$ 5,599,181
\$ 1,244,570	\$ -	\$ -	\$ 45,447,945	\$ 1,559,743
\$ 758,419	\$ -	\$ -	\$ 57,344,642	\$ 21,906,941
\$ (811,864)	\$ -	\$ -	\$ 22,915,990	\$ (5,267,845)
\$ (6,325,444)	\$ -	\$ -	\$ 143,134,352	\$ (63,488,618)
\$ 392,056	\$ -	\$ -	\$ 87,287,735	\$ 21,742,714
\$ 412,890	\$ -	\$ -	\$ 45,531,653	\$ 18,210,544

\$ 6,232,979	\$	-	\$	-	\$	298,444,558	\$	73,565,191
\$ 73,486	\$	-	\$	-	\$	8,369,573	\$	(8,357,888)
\$ (493,327)	\$	-	\$	-	\$	11,810,882	\$	(8,760,157)
\$ (2,172,457)	\$	-	\$	-	\$	144,359,202	\$	14,486,482
\$ 1,790,023	\$	-	\$	-	\$	108,658,442	\$	44,305,036
	\$	12,094,543	\$	(4,477,707)	\$	-	\$	-
\$ (1,125,975)	\$	1,211,148,758	\$	45,759,293	\$	1,086,588,313	\$	113,883,529

MGH Only

Does not include MD data

Fiscal Year Data: October - March (based on live data)

Net Patient Service Revenue = Contracted Payer Net Revenue - Free Care - Bad Debt - Denial - HSN Assessme

Net Margin = Net Patient Service Revenue - Total Costs (Direct + Indirect)

Facility	MGH
Fiscal Year	2014

Row Labels	Column Labels		
	Commercial		Outpatient
	Inpatient		
	Net Patient Service Revenue	Net Margin	Net Patient Service Revenue
Cancer	\$ 87,837,838	\$ 32,091,346	
Cardiac	\$ 38,768,449	\$ 16,204,421	
Orthopedics	\$ 26,367,686	\$ 10,118,116	
Gastroenterology	\$ 21,035,015	\$ 8,464,016	
Obstetrics	\$ 21,711,473	\$ 5,680,083	
Neurosurgery	\$ 15,488,307	\$ 5,521,320	
Pediatrics	\$ 17,302,448	\$ 3,351,632	
Other Surgery	\$ 17,585,348	\$ 3,103,196	
Endocrine	\$ 6,614,439	\$ 3,018,351	
Neurology	\$ 8,427,918	\$ 2,803,204	
Infectious Disease	\$ 8,023,396	\$ 2,429,980	
Other Medicine	\$ 9,444,714	\$ 2,327,562	
Vascular	\$ 5,718,663	\$ 2,113,654	
NICU	\$ 10,004,920	\$ 1,844,931	
Tracheostomy	\$ 7,194,057	\$ 1,505,273	
Thoracic	\$ 3,473,515	\$ 1,459,673	
Respiratory	\$ 4,074,083	\$ 1,082,219	
Renal	\$ 3,990,215	\$ 845,836	
Burns	\$ 1,626,960	\$ 840,531	
Trauma	\$ 2,753,899	\$ 713,220	
Urology	\$ 1,300,163	\$ 437,854	
Gynecology	\$ 547,936	\$ 134,525	
Major Procedures			\$ 34,955,185
All Other			\$ 4,410,867
Therapies			\$ 8,928,114
All Other Default			\$ 89,560
Treatments			\$ 106,253,175
Other Diagnostics			\$ 9,776,303
Clinical/Path Labs			\$ 23,116,360
Visits			\$ 42,591,472
Emergency			\$ 13,648,851
Major Imaging			\$ 42,617,316
Nonpatient Services			
Pharmacy			\$ 371,621

Observation				\$	14,366,049
Psychiatric Services				\$	3,160,276
Minor Imaging				\$	15,714,914
Minor Procedures				\$	8,904,987
Ambulatory Surgery				\$	60,284,099
Mental Health	\$	1,287,003	\$	(365,204)	
Grand Total	\$	320,578,445	\$	105,725,736	\$ 389,189,150

ent + HSN Receipts

Commercial Outpatient Net Margin	Government Inpatient Net Patient Service Revenue	Net Margin	Outpatient Net Patient Service Revenue
	\$	52,964,308	\$ (15,036,176)
	\$	52,946,992	\$ (1,063,178)
	\$	22,372,222	\$ (1,983,782)
	\$	15,048,782	\$ (3,977,338)
	\$	3,202,986	\$ (3,720,724)
	\$	10,992,378	\$ (2,706,812)
	\$	4,089,889	\$ (4,420,895)
	\$	10,056,794	\$ (2,141,081)
	\$	3,881,787	\$ (1,509,493)
	\$	8,271,322	\$ (3,817,227)
	\$	10,306,009	\$ (4,940,938)
	\$	11,720,114	\$ (5,332,681)
	\$	8,619,170	\$ (1,679,676)
	\$	3,114,438	\$ (1,819,888)
	\$	11,275,503	\$ (305,143)
	\$	2,301,449	\$ (659,475)
	\$	9,705,925	\$ (3,196,237)
	\$	7,100,551	\$ (1,483,128)
	\$	2,098,807	\$ 131,212
	\$	1,350,402	\$ (208,063)
	\$	2,014,474	\$ (288,839)
	\$	181,157	\$ (75,094)
\$ 15,107,207			\$ 9,385,477
\$ (882,221)			\$ 2,621,354
\$ 1,135,826			\$ 2,622,887
\$ 23,285			\$ 24,422
\$ 46,679,744			\$ 34,572,848
\$ 4,338,462			\$ 3,062,424
\$ 12,713,628			\$ 4,124,875
\$ (5,322,182)			\$ 28,107,711
\$ 4,945,505			\$ 6,708,657
\$ 26,312,380			\$ 13,547,594
\$ (676)			\$ 128,618

\$ 5,712,564			\$ 9,869,299
\$ (178,495)			\$ 1,528,927
\$ 7,542,921			\$ 4,435,907
\$ 3,220,920			\$ 3,463,046
\$ 19,344,326			\$ 14,280,227
	\$ 4,074,776	\$ (1,427,777)	
\$ 140,693,194	\$ 257,690,236	\$ (61,662,436)	\$ 138,484,274

Government Outpatient Net Margin	Other Inpatient Net Patient Service Revenue	Net Margin	Outpatient Net Patient Service Revenue
	\$	6,149,474	\$ 144,357
	\$	4,247,354	\$ 473,503
	\$	4,171,416	\$ 1,340,919
	\$	1,469,487	\$ (306,224)
	\$	160,285	\$ (134,690)
	\$	1,237,545	\$ (5,185)
	\$	440,800	\$ (551,517)
	\$	1,666,413	\$ (213,219)
	\$	235,464	\$ (164,818)
	\$	1,471,807	\$ 232,360
	\$	661,378	\$ (109,193)
	\$	849,898	\$ (2,153,187)
	\$	936,070	\$ 152,569
	\$	235,503	\$ 56,470
	\$	1,575,877	\$ 499,720
	\$	86,294	\$ (45,739)
	\$	276,900	\$ (70,722)
	\$	489,988	\$ (78,578)
	\$	3,344,287	\$ 1,309,628
	\$	1,512,475	\$ 636,718
	\$	401,651	\$ 130,904
\$ (6,121,910)			\$ 1,285,121
\$ (3,936,250)			\$ 379,816
\$ (2,235,648)			\$ 300,199
\$ (4,183)			\$ 8,484
\$ (19,321,659)			\$ 6,572,056
\$ (1,879,604)			\$ 558,433
\$ (1,720,327)			\$ 811,175
\$ (21,770,650)			\$ 1,414,439
\$ (2,484,276)			\$ 2,327,793
\$ (1,303,253)			\$ 2,671,514
			\$ 2,784,622
\$ (180,885)			\$ 45,917

\$ (3,374,819)			\$	1,287,992
\$ (3,411,383)			\$	53,356
\$ (303,560)			\$	485,464
\$ (2,636,410)			\$	400,364
\$ (8,361,266)			\$	4,068,150
\$	245,308	\$ (634,062)		
\$ (79,046,084)	\$ 31,865,674	\$ 510,015	\$	25,454,895

Other Outpatient Net Margin	Total Inpatient Net Patient Service Revenue	Net Margin	Outpatient Net Patient Service Revenue	Net Margin
	\$ 146,951,620	\$ 17,199,527	\$ -	\$ -
	\$ 95,962,795	\$ 15,614,746	\$ -	\$ -
	\$ 52,911,324	\$ 9,475,253	\$ -	\$ -
	\$ 37,553,284	\$ 4,180,453	\$ -	\$ -
	\$ 25,074,743	\$ 1,824,669	\$ -	\$ -
	\$ 27,718,231	\$ 2,809,322	\$ -	\$ -
	\$ 21,833,138	\$ (1,620,781)	\$ -	\$ -
	\$ 29,308,555	\$ 748,896	\$ -	\$ -
	\$ 10,731,689	\$ 1,344,041	\$ -	\$ -
	\$ 18,171,047	\$ (781,662)	\$ -	\$ -
	\$ 18,990,783	\$ (2,620,151)	\$ -	\$ -
	\$ 22,014,726	\$ (5,158,307)	\$ -	\$ -
	\$ 15,273,904	\$ 586,547	\$ -	\$ -
	\$ 13,354,861	\$ 81,513	\$ -	\$ -
	\$ 20,045,437	\$ 1,699,849	\$ -	\$ -
	\$ 5,861,257	\$ 754,458	\$ -	\$ -
	\$ 14,056,908	\$ (2,184,740)	\$ -	\$ -
	\$ 11,580,754	\$ (715,870)	\$ -	\$ -
	\$ 7,070,054	\$ 2,281,371	\$ -	\$ -
	\$ 5,616,776	\$ 1,141,874	\$ -	\$ -
	\$ 3,716,288	\$ 279,918	\$ -	\$ -
	\$ 729,093	\$ 59,431	\$ -	\$ -
\$ 14,551	\$ -	\$ -	\$ 45,625,783	\$ 8,999,849
\$ (19,166)	\$ -	\$ -	\$ 7,412,037	\$ (4,837,637)
\$ (338,987)	\$ -	\$ -	\$ 11,851,200	\$ (1,438,808)
\$ 2,853	\$ -	\$ -	\$ 122,466	\$ 21,955
\$ 3,503,756	\$ -	\$ -	\$ 147,398,079	\$ 30,861,840
\$ 161,199	\$ -	\$ -	\$ 13,397,160	\$ 2,620,058
\$ 232,584	\$ -	\$ -	\$ 28,052,411	\$ 11,225,884
\$ (3,291,580)	\$ -	\$ -	\$ 72,113,623	\$ (30,384,412)
\$ 190,496	\$ -	\$ -	\$ 22,685,301	\$ 2,651,725
\$ 1,094,689	\$ -	\$ -	\$ 58,836,424	\$ 26,103,815
\$ (1,437,988)	\$ -	\$ -	\$ 2,784,622	\$ (1,437,988)
\$ (12,686)	\$ -	\$ -	\$ 546,156	\$ (194,247)

\$ 53,168	\$ -	\$ -	\$ 25,523,340	\$ 2,390,913
\$ (184,277)	\$ -	\$ -	\$ 4,742,559	\$ (3,774,155)
\$ 53,692	\$ -	\$ -	\$ 20,636,286	\$ 7,293,052
\$ (486,235)	\$ -	\$ -	\$ 12,768,397	\$ 98,274
\$ (1,697,447)	\$ -	\$ -	\$ 78,632,476	\$ 9,285,613
\$ 5,607,087	\$ (2,427,043)	\$ -	\$ -	\$ -
\$ (2,161,379)	\$ 610,134,354	\$ 44,573,314	\$ 553,128,320	\$ 59,485,731

HPC Groupings	PayerSummaryDSC
Commercial	Aetna/USHC
Commercial	Alliance Products
Commercial	Blue Care Elect
Commercial	Blue Cross Indemnity
Commercial	Blue Cross OOA
Commercial	CCHIP
Commercial	Cigna
Commercial	Commercial
Commercial	Coventry (HCVM)
Commercial	Fallon
Commercial	HMO Blue
Commercial	HP HMO
Commercial	HP PPO
Commercial	NHP Commercial
Commercial	Other Mgd Care
Commercial	PHCS (Includes Unicare)
Commercial	QHP
Commercial	THP HMO
Commercial	THP PPO
Commercial	Unicare GIC
Commercial	United
Government	BC Medicare HMO/PPO
Government	Boston Healthnet
Government	Evercare
Government	Fallon Senior
Government	First Freedom
Government	Medicaid
Government	Medicare
Government	Medicare Managed PPO/FFS
Government	Network Health
Government	NHP Medicaid
Government	OOS Medicaid
Government	OOS Medicaid Managed
Government	Other Medicaid
Government	Tufts Medicare Pref HMO/PPO
Other	Free Care
Other	International
Other	Other
Other	Other Government
Other	Self Pay

FacilityCD	HPC Payer Rollup	DischargeFiscalYearNBR	PatientTypeCD	Service
MGH	Commercial	2010	I	Burns
MGH	Commercial	2010	I	Cancer
MGH	Commercial	2010	I	Cardiac
MGH	Commercial	2010	I	Endocrine
MGH	Commercial	2010	I	Gastroenterology
MGH	Commercial	2010	I	Gynecology
MGH	Commercial	2010	I	Infectious Disease
MGH	Commercial	2010	I	Mental Health
MGH	Commercial	2010	I	Neurology
MGH	Commercial	2010	I	Neurosurgery
MGH	Commercial	2010	I	NICU
MGH	Commercial	2010	I	Obstetrics
MGH	Commercial	2010	I	Orthopedics
MGH	Commercial	2010	I	Other Medicine
MGH	Commercial	2010	I	Other Surgery
MGH	Commercial	2010	I	Pediatrics
MGH	Commercial	2010	I	Renal
MGH	Commercial	2010	I	Respiratory
MGH	Commercial	2010	I	Thoracic
MGH	Commercial	2010	I	Tracheostomy
MGH	Commercial	2010	I	Trauma
MGH	Commercial	2010	I	Urology
MGH	Commercial	2010	I	Vascular
MGH	Commercial	2010	O	All Other
MGH	Commercial	2010	O	All Other Default
MGH	Commercial	2010	O	Ambulatory Surgery
MGH	Commercial	2010	O	Clinical/Path Labs
MGH	Commercial	2010	O	Emergency
MGH	Commercial	2010	O	Major Imaging
MGH	Commercial	2010	O	Major Procedures
MGH	Commercial	2010	O	Minor Imaging
MGH	Commercial	2010	O	Minor Procedures
MGH	Commercial	2010	O	Observation
MGH	Commercial	2010	O	Other Diagnostics
MGH	Commercial	2010	O	Pharmacy
MGH	Commercial	2010	O	Psychiatric Services
MGH	Commercial	2010	O	Therapies
MGH	Commercial	2010	O	Treatments
MGH	Commercial	2010	O	Visits
MGH	Commercial	2011	I	Burns
MGH	Commercial	2011	I	Cancer
MGH	Commercial	2011	I	Cardiac
MGH	Commercial	2011	I	Endocrine
MGH	Commercial	2011	I	Gastroenterology
MGH	Commercial	2011	I	Gynecology
MGH	Commercial	2011	I	Infectious Disease

MGH	Commercial	2011	I	Mental Health
MGH	Commercial	2011	I	Neurology
MGH	Commercial	2011	I	Neurosurgery
MGH	Commercial	2011	I	NICU
MGH	Commercial	2011	I	Obstetrics
MGH	Commercial	2011	I	Orthopedics
MGH	Commercial	2011	I	Other Medicine
MGH	Commercial	2011	I	Other Surgery
MGH	Commercial	2011	I	Pediatrics
MGH	Commercial	2011	I	Renal
MGH	Commercial	2011	I	Respiratory
MGH	Commercial	2011	I	Thoracic
MGH	Commercial	2011	I	Tracheostomy
MGH	Commercial	2011	I	Trauma
MGH	Commercial	2011	I	Urology
MGH	Commercial	2011	I	Vascular
MGH	Commercial	2011	O	All Other
MGH	Commercial	2011	O	All Other Default
MGH	Commercial	2011	O	Ambulatory Surgery
MGH	Commercial	2011	O	Clinical/Path Labs
MGH	Commercial	2011	O	Emergency
MGH	Commercial	2011	O	Major Imaging
MGH	Commercial	2011	O	Major Procedures
MGH	Commercial	2011	O	Minor Imaging
MGH	Commercial	2011	O	Minor Procedures
MGH	Commercial	2011	O	Observation
MGH	Commercial	2011	O	Other Diagnostics
MGH	Commercial	2011	O	Pharmacy
MGH	Commercial	2011	O	Psychiatric Services
MGH	Commercial	2011	O	Therapies
MGH	Commercial	2011	O	Treatments
MGH	Commercial	2011	O	Visits
MGH	Commercial	2012	I	Burns
MGH	Commercial	2012	I	Cancer
MGH	Commercial	2012	I	Cardiac
MGH	Commercial	2012	I	Endocrine
MGH	Commercial	2012	I	Gastroenterology
MGH	Commercial	2012	I	Gynecology
MGH	Commercial	2012	I	Infectious Disease
MGH	Commercial	2012	I	Mental Health
MGH	Commercial	2012	I	Neurology
MGH	Commercial	2012	I	Neurosurgery
MGH	Commercial	2012	I	NICU
MGH	Commercial	2012	I	Obstetrics
MGH	Commercial	2012	I	Orthopedics
MGH	Commercial	2012	I	Other Medicine
MGH	Commercial	2012	I	Other Surgery

MGH	Commercial	2012	I	Pediatrics
MGH	Commercial	2012	I	Renal
MGH	Commercial	2012	I	Respiratory
MGH	Commercial	2012	I	Thoracic
MGH	Commercial	2012	I	Tracheostomy
MGH	Commercial	2012	I	Trauma
MGH	Commercial	2012	I	Urology
MGH	Commercial	2012	I	Vascular
MGH	Commercial	2012	O	All Other
MGH	Commercial	2012	O	All Other Default
MGH	Commercial	2012	O	Ambulatory Surgery
MGH	Commercial	2012	O	Clinical/Path Labs
MGH	Commercial	2012	O	Emergency
MGH	Commercial	2012	O	Major Imaging
MGH	Commercial	2012	O	Major Procedures
MGH	Commercial	2012	O	Minor Imaging
MGH	Commercial	2012	O	Minor Procedures
MGH	Commercial	2012	O	Observation
MGH	Commercial	2012	O	Other Diagnostics
MGH	Commercial	2012	O	Pharmacy
MGH	Commercial	2012	O	Psychiatric Services
MGH	Commercial	2012	O	Therapies
MGH	Commercial	2012	O	Treatments
MGH	Commercial	2012	O	Visits
MGH	Commercial	2013	I	Burns
MGH	Commercial	2013	I	Cancer
MGH	Commercial	2013	I	Cardiac
MGH	Commercial	2013	I	Endocrine
MGH	Commercial	2013	I	Gastroenterology
MGH	Commercial	2013	I	Gynecology
MGH	Commercial	2013	I	Infectious Disease
MGH	Commercial	2013	I	Mental Health
MGH	Commercial	2013	I	Neurology
MGH	Commercial	2013	I	Neurosurgery
MGH	Commercial	2013	I	NICU
MGH	Commercial	2013	I	Obstetrics
MGH	Commercial	2013	I	Orthopedics
MGH	Commercial	2013	I	Other Medicine
MGH	Commercial	2013	I	Other Surgery
MGH	Commercial	2013	I	Pediatrics
MGH	Commercial	2013	I	Renal
MGH	Commercial	2013	I	Respiratory
MGH	Commercial	2013	I	Thoracic
MGH	Commercial	2013	I	Tracheostomy
MGH	Commercial	2013	I	Trauma
MGH	Commercial	2013	I	Urology
MGH	Commercial	2013	I	Vascular

MGH	Commercial	2013	O	All Other
MGH	Commercial	2013	O	All Other Default
MGH	Commercial	2013	O	Ambulatory Surgery
MGH	Commercial	2013	O	Clinical/Path Labs
MGH	Commercial	2013	O	Emergency
MGH	Commercial	2013	O	Major Imaging
MGH	Commercial	2013	O	Major Procedures
MGH	Commercial	2013	O	Minor Imaging
MGH	Commercial	2013	O	Minor Procedures
MGH	Commercial	2013	O	Observation
MGH	Commercial	2013	O	Other Diagnostics
MGH	Commercial	2013	O	Pharmacy
MGH	Commercial	2013	O	Psychiatric Services
MGH	Commercial	2013	O	Therapies
MGH	Commercial	2013	O	Treatments
MGH	Commercial	2013	O	Visits
MGH	Commercial	2014	I	Burns
MGH	Commercial	2014	I	Cancer
MGH	Commercial	2014	I	Cardiac
MGH	Commercial	2014	I	Endocrine
MGH	Commercial	2014	I	Gastroenterology
MGH	Commercial	2014	I	Gynecology
MGH	Commercial	2014	I	Infectious Disease
MGH	Commercial	2014	I	Mental Health
MGH	Commercial	2014	I	Neurology
MGH	Commercial	2014	I	Neurosurgery
MGH	Commercial	2014	I	NICU
MGH	Commercial	2014	I	Obstetrics
MGH	Commercial	2014	I	Orthopedics
MGH	Commercial	2014	I	Other Medicine
MGH	Commercial	2014	I	Other Surgery
MGH	Commercial	2014	I	Pediatrics
MGH	Commercial	2014	I	Renal
MGH	Commercial	2014	I	Respiratory
MGH	Commercial	2014	I	Thoracic
MGH	Commercial	2014	I	Tracheostomy
MGH	Commercial	2014	I	Trauma
MGH	Commercial	2014	I	Urology
MGH	Commercial	2014	I	Vascular
MGH	Commercial	2014	O	All Other
MGH	Commercial	2014	O	All Other Default
MGH	Commercial	2014	O	Ambulatory Surgery
MGH	Commercial	2014	O	Clinical/Path Labs
MGH	Commercial	2014	O	Emergency
MGH	Commercial	2014	O	Major Imaging
MGH	Commercial	2014	O	Major Procedures
MGH	Commercial	2014	O	Minor Imaging

MGH	Commercial	2014	O	Minor Procedures
MGH	Commercial	2014	O	Observation
MGH	Commercial	2014	O	Other Diagnostics
MGH	Commercial	2014	O	Pharmacy
MGH	Commercial	2014	O	Psychiatric Services
MGH	Commercial	2014	O	Therapies
MGH	Commercial	2014	O	Treatments
MGH	Commercial	2014	O	Visits
MGH	Government	2010	I	Burns
MGH	Government	2010	I	Cancer
MGH	Government	2010	I	Cardiac
MGH	Government	2010	I	Endocrine
MGH	Government	2010	I	Gastroenterology
MGH	Government	2010	I	Gynecology
MGH	Government	2010	I	Infectious Disease
MGH	Government	2010	I	Mental Health
MGH	Government	2010	I	Neurology
MGH	Government	2010	I	Neurosurgery
MGH	Government	2010	I	NICU
MGH	Government	2010	I	Obstetrics
MGH	Government	2010	I	Orthopedics
MGH	Government	2010	I	Other Medicine
MGH	Government	2010	I	Other Surgery
MGH	Government	2010	I	Pediatrics
MGH	Government	2010	I	Renal
MGH	Government	2010	I	Respiratory
MGH	Government	2010	I	Thoracic
MGH	Government	2010	I	Tracheostomy
MGH	Government	2010	I	Trauma
MGH	Government	2010	I	Urology
MGH	Government	2010	I	Vascular
MGH	Government	2010	O	All Other
MGH	Government	2010	O	All Other Default
MGH	Government	2010	O	Ambulatory Surgery
MGH	Government	2010	O	Clinical/Path Labs
MGH	Government	2010	O	Emergency
MGH	Government	2010	O	Major Imaging
MGH	Government	2010	O	Major Procedures
MGH	Government	2010	O	Minor Imaging
MGH	Government	2010	O	Minor Procedures
MGH	Government	2010	O	Observation
MGH	Government	2010	O	Other Diagnostics
MGH	Government	2010	O	Pharmacy
MGH	Government	2010	O	Psychiatric Services
MGH	Government	2010	O	Therapies
MGH	Government	2010	O	Treatments
MGH	Government	2010	O	Visits

MGH	Government	2011	I	Burns
MGH	Government	2011	I	Cancer
MGH	Government	2011	I	Cardiac
MGH	Government	2011	I	Endocrine
MGH	Government	2011	I	Gastroenterology
MGH	Government	2011	I	Gynecology
MGH	Government	2011	I	Infectious Disease
MGH	Government	2011	I	Mental Health
MGH	Government	2011	I	Neurology
MGH	Government	2011	I	Neurosurgery
MGH	Government	2011	I	NICU
MGH	Government	2011	I	Obstetrics
MGH	Government	2011	I	Orthopedics
MGH	Government	2011	I	Other Medicine
MGH	Government	2011	I	Other Surgery
MGH	Government	2011	I	Pediatrics
MGH	Government	2011	I	Renal
MGH	Government	2011	I	Respiratory
MGH	Government	2011	I	Thoracic
MGH	Government	2011	I	Tracheostomy
MGH	Government	2011	I	Trauma
MGH	Government	2011	I	Urology
MGH	Government	2011	I	Vascular
MGH	Government	2011	O	All Other
MGH	Government	2011	O	All Other Default
MGH	Government	2011	O	Ambulatory Surgery
MGH	Government	2011	O	Clinical/Path Labs
MGH	Government	2011	O	Emergency
MGH	Government	2011	O	Major Imaging
MGH	Government	2011	O	Major Procedures
MGH	Government	2011	O	Minor Imaging
MGH	Government	2011	O	Minor Procedures
MGH	Government	2011	O	Observation
MGH	Government	2011	O	Other Diagnostics
MGH	Government	2011	O	Pharmacy
MGH	Government	2011	O	Psychiatric Services
MGH	Government	2011	O	Therapies
MGH	Government	2011	O	Treatments
MGH	Government	2011	O	Visits
MGH	Government	2012	I	Burns
MGH	Government	2012	I	Cancer
MGH	Government	2012	I	Cardiac
MGH	Government	2012	I	Endocrine
MGH	Government	2012	I	Gastroenterology
MGH	Government	2012	I	Gynecology
MGH	Government	2012	I	Infectious Disease
MGH	Government	2012	I	Mental Health

MGH	Government	2012	I	Neurology
MGH	Government	2012	I	Neurosurgery
MGH	Government	2012	I	NICU
MGH	Government	2012	I	Obstetrics
MGH	Government	2012	I	Orthopedics
MGH	Government	2012	I	Other Medicine
MGH	Government	2012	I	Other Surgery
MGH	Government	2012	I	Pediatrics
MGH	Government	2012	I	Renal
MGH	Government	2012	I	Respiratory
MGH	Government	2012	I	Thoracic
MGH	Government	2012	I	Tracheostomy
MGH	Government	2012	I	Trauma
MGH	Government	2012	I	Urology
MGH	Government	2012	I	Vascular
MGH	Government	2012	O	All Other
MGH	Government	2012	O	All Other Default
MGH	Government	2012	O	Ambulatory Surgery
MGH	Government	2012	O	Clinical/Path Labs
MGH	Government	2012	O	Emergency
MGH	Government	2012	O	Major Imaging
MGH	Government	2012	O	Major Procedures
MGH	Government	2012	O	Minor Imaging
MGH	Government	2012	O	Minor Procedures
MGH	Government	2012	O	Observation
MGH	Government	2012	O	Other Diagnostics
MGH	Government	2012	O	Pharmacy
MGH	Government	2012	O	Psychiatric Services
MGH	Government	2012	O	Therapies
MGH	Government	2012	O	Treatments
MGH	Government	2012	O	Visits
MGH	Government	2013	I	Burns
MGH	Government	2013	I	Cancer
MGH	Government	2013	I	Cardiac
MGH	Government	2013	I	Endocrine
MGH	Government	2013	I	Gastroenterology
MGH	Government	2013	I	Gynecology
MGH	Government	2013	I	Infectious Disease
MGH	Government	2013	I	Mental Health
MGH	Government	2013	I	Neurology
MGH	Government	2013	I	Neurosurgery
MGH	Government	2013	I	NICU
MGH	Government	2013	I	Obstetrics
MGH	Government	2013	I	Orthopedics
MGH	Government	2013	I	Other Medicine
MGH	Government	2013	I	Other Surgery
MGH	Government	2013	I	Pediatrics

MGH	Government	2013	I	Renal
MGH	Government	2013	I	Respiratory
MGH	Government	2013	I	Thoracic
MGH	Government	2013	I	Tracheostomy
MGH	Government	2013	I	Trauma
MGH	Government	2013	I	Urology
MGH	Government	2013	I	Vascular
MGH	Government	2013	O	All Other
MGH	Government	2013	O	All Other Default
MGH	Government	2013	O	Ambulatory Surgery
MGH	Government	2013	O	Clinical/Path Labs
MGH	Government	2013	O	Emergency
MGH	Government	2013	O	Major Imaging
MGH	Government	2013	O	Major Procedures
MGH	Government	2013	O	Minor Imaging
MGH	Government	2013	O	Minor Procedures
MGH	Government	2013	O	Observation
MGH	Government	2013	O	Other Diagnostics
MGH	Government	2013	O	Pharmacy
MGH	Government	2013	O	Psychiatric Services
MGH	Government	2013	O	Therapies
MGH	Government	2013	O	Treatments
MGH	Government	2013	O	Visits
MGH	Government	2014	I	Burns
MGH	Government	2014	I	Cancer
MGH	Government	2014	I	Cardiac
MGH	Government	2014	I	Endocrine
MGH	Government	2014	I	Gastroenterology
MGH	Government	2014	I	Gynecology
MGH	Government	2014	I	Infectious Disease
MGH	Government	2014	I	Mental Health
MGH	Government	2014	I	Neurology
MGH	Government	2014	I	Neurosurgery
MGH	Government	2014	I	NICU
MGH	Government	2014	I	Obstetrics
MGH	Government	2014	I	Orthopedics
MGH	Government	2014	I	Other Medicine
MGH	Government	2014	I	Other Surgery
MGH	Government	2014	I	Pediatrics
MGH	Government	2014	I	Renal
MGH	Government	2014	I	Respiratory
MGH	Government	2014	I	Thoracic
MGH	Government	2014	I	Tracheostomy
MGH	Government	2014	I	Trauma
MGH	Government	2014	I	Urology
MGH	Government	2014	I	Vascular
MGH	Government	2014	O	All Other

MGH	Government	2014	O	All Other Default
MGH	Government	2014	O	Ambulatory Surgery
MGH	Government	2014	O	Clinical/Path Labs
MGH	Government	2014	O	Emergency
MGH	Government	2014	O	Major Imaging
MGH	Government	2014	O	Major Procedures
MGH	Government	2014	O	Minor Imaging
MGH	Government	2014	O	Minor Procedures
MGH	Government	2014	O	Observation
MGH	Government	2014	O	Other Diagnostics
MGH	Government	2014	O	Pharmacy
MGH	Government	2014	O	Psychiatric Services
MGH	Government	2014	O	Therapies
MGH	Government	2014	O	Treatments
MGH	Government	2014	O	Visits
MGH	Other	2010	I	Burns
MGH	Other	2010	I	Cancer
MGH	Other	2010	I	Cardiac
MGH	Other	2010	I	Endocrine
MGH	Other	2010	I	Gastroenterology
MGH	Other	2010	I	Gynecology
MGH	Other	2010	I	Infectious Disease
MGH	Other	2010	I	Mental Health
MGH	Other	2010	I	Neurology
MGH	Other	2010	I	Neurosurgery
MGH	Other	2010	I	NICU
MGH	Other	2010	I	Obstetrics
MGH	Other	2010	I	Orthopedics
MGH	Other	2010	I	Other Medicine
MGH	Other	2010	I	Other Surgery
MGH	Other	2010	I	Pediatrics
MGH	Other	2010	I	Renal
MGH	Other	2010	I	Respiratory
MGH	Other	2010	I	Thoracic
MGH	Other	2010	I	Tracheostomy
MGH	Other	2010	I	Trauma
MGH	Other	2010	I	Urology
MGH	Other	2010	I	Vascular
MGH	Other	2010	O	All Other
MGH	Other	2010	O	All Other Default
MGH	Other	2010	O	Ambulatory Surgery
MGH	Other	2010	O	Clinical/Path Labs
MGH	Other	2010	O	Emergency
MGH	Other	2010	O	Major Imaging
MGH	Other	2010	O	Major Procedures
MGH	Other	2010	O	Minor Imaging
MGH	Other	2010	O	Minor Procedures

MGH	Other	2010	O	Nonpatient Services
MGH	Other	2010	O	Observation
MGH	Other	2010	O	Other Diagnostics
MGH	Other	2010	O	Pharmacy
MGH	Other	2010	O	Psychiatric Services
MGH	Other	2010	O	Therapies
MGH	Other	2010	O	Treatments
MGH	Other	2010	O	Visits
MGH	Other	2011	I	Burns
MGH	Other	2011	I	Cancer
MGH	Other	2011	I	Cardiac
MGH	Other	2011	I	Endocrine
MGH	Other	2011	I	Gastroenterology
MGH	Other	2011	I	Gynecology
MGH	Other	2011	I	Infectious Disease
MGH	Other	2011	I	Mental Health
MGH	Other	2011	I	Neurology
MGH	Other	2011	I	Neurosurgery
MGH	Other	2011	I	NICU
MGH	Other	2011	I	Obstetrics
MGH	Other	2011	I	Orthopedics
MGH	Other	2011	I	Other Medicine
MGH	Other	2011	I	Other Surgery
MGH	Other	2011	I	Pediatrics
MGH	Other	2011	I	Renal
MGH	Other	2011	I	Respiratory
MGH	Other	2011	I	Thoracic
MGH	Other	2011	I	Tracheostomy
MGH	Other	2011	I	Trauma
MGH	Other	2011	I	Urology
MGH	Other	2011	I	Vascular
MGH	Other	2011	O	All Other
MGH	Other	2011	O	All Other Default
MGH	Other	2011	O	Ambulatory Surgery
MGH	Other	2011	O	Clinical/Path Labs
MGH	Other	2011	O	Emergency
MGH	Other	2011	O	Major Imaging
MGH	Other	2011	O	Major Procedures
MGH	Other	2011	O	Minor Imaging
MGH	Other	2011	O	Minor Procedures
MGH	Other	2011	O	Nonpatient Services
MGH	Other	2011	O	Observation
MGH	Other	2011	O	Other Diagnostics
MGH	Other	2011	O	Pharmacy
MGH	Other	2011	O	Psychiatric Services
MGH	Other	2011	O	Therapies
MGH	Other	2011	O	Treatments

MGH	Other	2011	O	Visits
MGH	Other	2012	I	Burns
MGH	Other	2012	I	Cancer
MGH	Other	2012	I	Cardiac
MGH	Other	2012	I	Endocrine
MGH	Other	2012	I	Gastroenterology
MGH	Other	2012	I	Gynecology
MGH	Other	2012	I	Infectious Disease
MGH	Other	2012	I	Mental Health
MGH	Other	2012	I	Neurology
MGH	Other	2012	I	Neurosurgery
MGH	Other	2012	I	NICU
MGH	Other	2012	I	Obstetrics
MGH	Other	2012	I	Orthopedics
MGH	Other	2012	I	Other Medicine
MGH	Other	2012	I	Other Surgery
MGH	Other	2012	I	Pediatrics
MGH	Other	2012	I	Renal
MGH	Other	2012	I	Respiratory
MGH	Other	2012	I	Thoracic
MGH	Other	2012	I	Tracheostomy
MGH	Other	2012	I	Trauma
MGH	Other	2012	I	Urology
MGH	Other	2012	I	Vascular
MGH	Other	2012	O	All Other
MGH	Other	2012	O	All Other Default
MGH	Other	2012	O	Ambulatory Surgery
MGH	Other	2012	O	Clinical/Path Labs
MGH	Other	2012	O	Emergency
MGH	Other	2012	O	Major Imaging
MGH	Other	2012	O	Major Procedures
MGH	Other	2012	O	Minor Imaging
MGH	Other	2012	O	Minor Procedures
MGH	Other	2012	O	Nonpatient Services
MGH	Other	2012	O	Observation
MGH	Other	2012	O	Other Diagnostics
MGH	Other	2012	O	Pharmacy
MGH	Other	2012	O	Psychiatric Services
MGH	Other	2012	O	Therapies
MGH	Other	2012	O	Treatments
MGH	Other	2012	O	Visits
MGH	Other	2013	I	Burns
MGH	Other	2013	I	Cancer
MGH	Other	2013	I	Cardiac
MGH	Other	2013	I	Endocrine
MGH	Other	2013	I	Gastroenterology
MGH	Other	2013	I	Gynecology

MGH	Other	2013	I	Infectious Disease
MGH	Other	2013	I	Mental Health
MGH	Other	2013	I	Neurology
MGH	Other	2013	I	Neurosurgery
MGH	Other	2013	I	NICU
MGH	Other	2013	I	Obstetrics
MGH	Other	2013	I	Orthopedics
MGH	Other	2013	I	Other Medicine
MGH	Other	2013	I	Other Surgery
MGH	Other	2013	I	Pediatrics
MGH	Other	2013	I	Renal
MGH	Other	2013	I	Respiratory
MGH	Other	2013	I	Thoracic
MGH	Other	2013	I	Tracheostomy
MGH	Other	2013	I	Trauma
MGH	Other	2013	I	Urology
MGH	Other	2013	I	Vascular
MGH	Other	2013	O	All Other
MGH	Other	2013	O	All Other Default
MGH	Other	2013	O	Ambulatory Surgery
MGH	Other	2013	O	Clinical/Path Labs
MGH	Other	2013	O	Emergency
MGH	Other	2013	O	Major Imaging
MGH	Other	2013	O	Major Procedures
MGH	Other	2013	O	Minor Imaging
MGH	Other	2013	O	Minor Procedures
MGH	Other	2013	O	Nonpatient Services
MGH	Other	2013	O	Observation
MGH	Other	2013	O	Other Diagnostics
MGH	Other	2013	O	Pharmacy
MGH	Other	2013	O	Psychiatric Services
MGH	Other	2013	O	Therapies
MGH	Other	2013	O	Treatments
MGH	Other	2013	O	Visits
MGH	Other	2014	I	Burns
MGH	Other	2014	I	Cancer
MGH	Other	2014	I	Cardiac
MGH	Other	2014	I	Endocrine
MGH	Other	2014	I	Gastroenterology
MGH	Other	2014	I	Infectious Disease
MGH	Other	2014	I	Mental Health
MGH	Other	2014	I	Neurology
MGH	Other	2014	I	Neurosurgery
MGH	Other	2014	I	NICU
MGH	Other	2014	I	Obstetrics
MGH	Other	2014	I	Orthopedics
MGH	Other	2014	I	Other Medicine

MGH	Other	2014	I	Other Surgery
MGH	Other	2014	I	Pediatrics
MGH	Other	2014	I	Renal
MGH	Other	2014	I	Respiratory
MGH	Other	2014	I	Thoracic
MGH	Other	2014	I	Tracheostomy
MGH	Other	2014	I	Trauma
MGH	Other	2014	I	Urology
MGH	Other	2014	I	Vascular
MGH	Other	2014	O	All Other
MGH	Other	2014	O	All Other Default
MGH	Other	2014	O	Ambulatory Surgery
MGH	Other	2014	O	Clinical/Path Labs
MGH	Other	2014	O	Emergency
MGH	Other	2014	O	Major Imaging
MGH	Other	2014	O	Major Procedures
MGH	Other	2014	O	Minor Imaging
MGH	Other	2014	O	Minor Procedures
MGH	Other	2014	O	Nonpatient Services
MGH	Other	2014	O	Observation
MGH	Other	2014	O	Other Diagnostics
MGH	Other	2014	O	Pharmacy
MGH	Other	2014	O	Psychiatric Services
MGH	Other	2014	O	Therapies
MGH	Other	2014	O	Treatments
MGH	Other	2014	O	Visits

NPSR	TotCost	NetMargin
2912858.74	1748048.67	1164810.07
117408159.8	85306319.36	32101840.47
71521375.67	51224361.74	20297013.93
10267898.7	6769149.09	3498749.61
34089797.41	23166451.47	10923345.94
2973411.59	2523394.04	450017.55
11429855.09	8665161.49	2764693.6
2778708.32	4210619.49	-1431911.17
14077424.56	9701319.93	4376104.63
24414538.24	17001617.86	7412920.38
17433534.55	15544271.7	1889262.85
31677183.84	29391408.93	2285774.91
39927423.84	28419143.04	11508280.8
17079722.44	15302830.89	1776891.55
23235559.54	17839294.86	5396264.68
27291673.59	23130293.63	4161379.96
5123739.57	4453514.31	670225.26
8690400.95	7001509.03	1688891.92
5465357.25	3205354.95	2260002.3
17100679.33	16018285.11	1082394.22
4328868.69	3663301.98	665566.71
3772384.4	2955910.98	816473.42
15011531.93	11419702.03	3591829.9
1972917.41	3420832.74	-1447915.33
265535.76	661970.98	-396435.22
82172682.6	57484950.27	24687732.33
38548052.94	19964157.23	18583895.71
26575414.97	19113036.37	7462378.6
79638208.56	25972885.66	53665322.9
50266006.96	27685879.54	22580127.42
31828822.18	16044567.47	15784254.71
14958173.4	10507741.83	4450431.57
20960186.5	10111644.02	10848542.48
18762874.13	12317608.33	6445265.8
4065124.9	2546350.18	1518774.72
8562453.79	13878333.78	-5315879.99
11485799.27	13248572.45	-1762773.18
252003080.9	105337470.9	146665610
71881268.24	88419180.64	-16537912.4
3779551.73	2847304.817	932246.913
156790531	104449738.2	52340792.8
74173144.39	50847361.84	23325782.55
11462211.54	7952544.492	3509667.048
36803578.96	24464811.99	12338766.97
1419412.8	1143270.602	276142.198
10219214.48	7582744.693	2636469.787

2827654.02	4469375.054	-1641721.034
12800852.49	8903591.062	3897261.428
26801169.95	17504518.35	9296651.603
17836107.24	16570355.99	1265751.254
35623540.58	31115633.54	4507907.04
45791022.75	30539274.86	15251747.89
15533789.36	13053156.96	2480632.404
26729433.36	21722056.6	5007376.765
31654807.57	26219193.26	5435614.31
5691904.27	4666928.911	1024975.359
8369837.19	6391252.699	1978584.491
5247480.93	3280321.617	1967159.313
17580508.45	14199017.68	3381490.77
4783125.32	4155372.115	627753.205
3853831.02	3039663.93	814167.09
16083487.28	11954165.83	4129321.45
2382787.63	3639017.65	-1256230.02
259863.88	196046.1557	63817.7243
95874662.07	58342150.77	37532511.3
43704925.49	20313025.96	23391899.53
25946796.75	19108756.82	6838039.933
70529896.54	26693060.63	43836835.91
55210854.51	30013661.39	25197193.12
32976851.55	16855709.91	16121141.64
17927733.89	11765538.7	6162195.19
21876479.08	10580636.12	11295842.96
19398406.77	12136787.62	7261619.151
6149389.74	3700358.841	2449030.899
9366731.93	12891426.02	-3524694.091
13675918.58	13445271.88	230646.7025
236757768.5	111121994.5	125635773.9
74175335.56	89261768.63	-15086433.07
3127699.621	3192403.891	-64704.2698
173830492	120258004.5	53572487.54
77672340.66	53224776.66	24447563.99
12116415.76	7754650.097	4361765.666
39078472.82	25235369.51	13843103.3
1590590.036	1357340.545	233249.4906
12694226.74	9917423.476	2776803.264
4473890.723	4304457.226	169433.4973
16622332.36	11284898.29	5337434.065
29837823.39	20959492.83	8878330.567
17568312.46	16615901.2	952411.2625
39056431.62	32623142.95	6433288.672
46878520.71	32279828.02	14598692.69
17567293.63	12934173.66	4633119.97
29716895.36	24639223.23	5077672.131

33886536.19	28669640	5216896.194
9098366.923	7005998.669	2092368.254
7665628.683	5197094.466	2468534.217
6697631.404	4172307.718	2525323.686
22835111.5	19999678.41	2835433.092
4453158.653	3449982.784	1003175.869
3990405.778	2739623.779	1250781.999
12564697.5	8199600.465	4365097.038
3438619.384	4698174.617	-1259555.234
296638.9547	268179.8341	28459.1206
105595747.9	67979851.72	37615896.14
46718009.22	21099572.92	25618436.3
28486566.43	20527011.68	7959554.754
82174565.33	30309117.44	51865447.89
58730408.86	32270650.35	26459758.51
37962257.25	17399122.84	20563134.41
18319629.92	12003576.55	6316053.372
26939159.23	14012862.78	12926296.45
20305621.83	11845800.14	8459821.688
6368897.408	6209185.158	159712.2494
9005795.356	12517630.97	-3511835.615
15205165.24	15052985.91	152179.3378
239830368	116140198.1	123690169.9
84095010.53	95628664.73	-11533654.2
2762381.806	1872106.699	890275.1067
171331392.2	117544801	53786591.22
83387651.12	54208533.57	29179117.55
15323907.85	9455207.528	5868700.318
34415543.85	22173205.65	12242338.2
1282523.31	1044134.026	238389.2837
12601583.12	9416000.697	3185582.421
3692267.946	3805883.137	-113615.191
18014056.68	12308287.65	5705769.028
35910677.02	23267347.29	12643329.74
23619510.85	21012473.96	2607036.899
40325763.74	32810884.83	7514878.905
50889681.52	33499416.75	17390264.77
19462247.66	14313185.29	5149062.374
30226254.88	21635474.06	8590780.818
33542031.27	26236548.34	7305482.93
7683050.03	5900813.683	1782236.347
8022080.306	5778080.023	2244000.283
5739465.467	3549929.715	2189535.752
18867601.68	13187045.53	5680556.151
4948534.18	3872306.739	1076227.441
5045499.54	3614222.51	1431277.03
14049673.77	9082680.58	4966993.189

4321329.012	4705643.438	-384314.4266
224999.4336	260481.3486	-35481.915
112418576.9	79111256.37	33307320.57
47230465.59	21663734.59	25566730.99
27339950.98	18536680.61	8803270.37
80414080.82	32294616.07	48119464.74
61378200.98	34338569.99	27039630.99
35389952.92	16591377.24	18798575.68
17411580.99	11804436.14	5607144.849
31589953.21	16208785.12	15381168.09
20197775.19	11747317.3	8450457.888
5414677.229	7389732.252	-1975055.024
6961279.789	8533833.757	-1572553.968
16951878.53	16616369.48	335509.0506
214936572.4	114704185.3	100232387.1
85784751.68	98913099.39	-13128347.72
1626960.43	786429.362	840531.0683
87837838.21	55746492.6	32091345.61
38768449.05	22564027.92	16204421.13
6614438.641	3596087.289	3018351.352
21035015.43	12570999.43	8464016.005
547935.9077	413411.376	134524.5317
8023396.401	5593416.114	2429980.287
1287002.718	1652206.617	-365203.8995
8427917.631	5624713.536	2803204.095
15488307.22	9966987.429	5521319.79
10004920.34	8159989.233	1844931.108
21711472.66	16031389.6	5680083.064
26367685.78	16249569.8	10118115.98
9444713.88	7117152.171	2327561.709
17585348.44	14482152.87	3103195.572
17302448.04	13950816.2	3351631.836
3990214.633	3144379.129	845835.5044
4074083.087	2991864.442	1082218.645
3473514.516	2013841.457	1459673.059
7194057.453	5688784.8	1505272.653
2753898.67	2040679.153	713219.5165
1300163.248	862309.713	437853.5353
5718662.79	3605009.124	2113653.666
4410867.154	5293088.118	-882220.9634
89559.9209	66275.2976	23284.6233
60284099.2	40939773.57	19344325.63
23116359.78	10402732.14	12713627.63
13648850.67	8703345.426	4945505.248
42617316.11	16304936.53	26312379.59
34955184.97	19847977.68	15107207.29
15714914.42	8171993.451	7542920.972

8904986.718	5684067.176	3220919.542
14366049.4	8653485.196	5712564.202
9776302.565	5437840.09	4338462.475
371621.3283	372296.9915	-675.6632
3160276.443	3338771.531	-178495.0883
8928114.047	7792287.649	1135826.398
106253175.4	59573431.51	46679743.92
42591472.25	47913654.15	-5322181.902
3539700.15	4249132.56	-709432.41
70909509.65	86860650.65	-15951141
87912950.37	104057319.8	-16144369.38
7936880.42	10162127.85	-2225247.43
29058374.79	35135426.48	-6077051.69
1066211.41	1259059.46	-192848.05
12408876.29	16069546.42	-3660670.13
5547243.23	9815189.46	-4267946.23
15463576.53	19139534.48	-3675957.95
15638855.24	17246053.34	-1607198.1
7729215.58	10896516.14	-3167300.56
7877120.87	12990397.48	-5113276.61
37314372.84	41129442.74	-3815069.9
23211157.97	35004326.1	-11793168.13
17619350.52	22733315.86	-5113965.34
9335850.8	14366892.35	-5031041.55
11844131.26	15788630.63	-3944499.37
17403727.8	22553103.51	-5149375.71
2994266.17	3375905.57	-381639.4
14762805.91	20205867.97	-5443062.06
2025992.36	2641107.64	-615115.28
3858586.12	4294024.12	-435438
23992003.23	28980511.13	-4988507.9
983931.96	1865695.63	-881763.67
329523.49	324737.68	4785.81
15832588	22507116.94	-6674528.94
7590458.65	10339439.81	-2748981.16
10547476.94	17621239.91	-7073762.97
18173085.89	19261312.32	-1088226.43
17494107.69	21944963.39	-4450855.7
7745523.23	8490870.43	-745347.2
5869754.4	9040148.48	-3170394.08
5073870.31	10469866.89	-5395996.58
5991737.33	8415118.82	-2423381.49
1535104.43	3006924.2	-1471819.77
7605919.87	17348537.91	-9742618.04
4848809.45	8057433.17	-3208623.72
56208185.33	77611864.18	-21403678.85
47262782.45	80149906.76	-32887124.31

2226007.6	3003194.305	-777186.705
84786998.53	103932816.6	-19145818.03
93854318.5	112708322.2	-18854003.68
8057557.21	11084532.2	-3026974.99
30395908.69	36697265.33	-6301356.644
754520.88	989956.531	-235435.651
14139601.92	18920991.52	-4781389.604
5431191.41	10501986.75	-5070795.34
13728926.95	18207943.96	-4479017.012
14813288.96	17689440.91	-2876151.95
7418552.94	10801610.22	-3383057.278
9628457.23	15695132	-6066674.77
38302266.18	43632410.5	-5330144.322
21251629.06	33745871.84	-12494242.78
15275755.78	19791547.8	-4515792.023
8430093.38	14331299.3	-5901205.922
11405888.51	14964855.28	-3558966.767
18133123.79	24049150.79	-5916026.998
3664388.3	5080846.116	-1416457.816
18615628.6	23853475.81	-5237847.21
1990583.03	3240339.327	-1249756.297
4206489.44	4983734.99	-777245.55
25945248.23	34182700.73	-8237452.496
1198398.89	2149699.987	-951301.0968
57076.33	105576.7364	-48500.4064
17785249.39	25130561.84	-7345312.452
7920845.94	10934482.12	-3013636.183
10257172.67	17347013.06	-7089840.393
16859164.93	20731014.21	-3871849.279
18579761.43	24012017.55	-5432256.119
8036883.98	9058336.326	-1021452.346
6025231.15	8855075.061	-2829843.911
6452594.39	13250592.48	-6797998.09
6495745.49	9204020.353	-2708274.863
2261066.29	4534253.419	-2273187.129
7206781.05	16576751.17	-9369970.121
5416526.18	8526482.031	-3109955.851
63998918.23	89397466.83	-25398548.6
48618546.39	83215753.22	-34597206.83
3505116.163	5667495.047	-2162378.884
93649857.59	115665789.9	-22015932.27
96152685.76	104297374.4	-8144688.623
8096574.899	11841542.12	-3744967.222
30769453.19	37393231.48	-6623778.293
755917.4156	932963.438	-177046.0224
15369168.02	21558734.85	-6189566.821
7223546.358	9913076.133	-2689529.775

15023326.87	19412524.56	-4389197.687
20701586.81	23827424.28	-3125837.476
6495161.952	9473191.668	-2978029.716
9374118.811	14441837.27	-5067718.459
42892426.75	45808514.54	-2916087.794
24426309.52	36129900.36	-11703590.84
17632280.58	23413541.28	-5781260.704
7802221.975	12583031.92	-4780809.947
12778048.63	16991780.48	-4213731.854
18152873.36	22870640.59	-4717767.235
3617836.282	4026464.293	-408628.0106
14231651.29	24670985.06	-10439333.77
1598246.407	3042933.355	-1444686.948
4323158.008	5285876.633	-962718.6246
22344518.87	27433758.45	-5089239.576
1665543.966	2726769.084	-1061225.118
88944.215	142650.1572	-53705.9422
19740732.84	31956340.32	-12215607.48
8072638.289	11707355.75	-3634717.459
11120272.82	18841430.29	-7721157.473
20934966.77	25083964.11	-4148997.339
21216563.56	26080680.29	-4864116.739
8886389.665	9766284.818	-879895.1532
6365956.334	10931477.92	-4565521.582
8003783.042	19930980.1	-11927197.06
6791097.087	9664293.619	-2873196.532
2904861.084	6832279.128	-3927418.044
7551713.623	16397556.76	-8845843.142
5863701.994	9991909.441	-4128207.447
65659124.85	94410683.15	-28751558.3
51645309.87	86478281.89	-34832972.02
2913702.298	3257553.367	-343851.0693
103063500.2	136091884.6	-33028384.41
94660758.56	105604857.3	-10944098.69
8154936.136	11822946.6	-3668010.464
30422443.31	37842337.53	-7419894.217
566083.6405	831292.126	-265208.4855
16767855.65	23703051.5	-6935195.853
7292596.038	10597392.78	-3304796.744
20908461.55	27576605.77	-6668144.215
21262712.44	25584706.98	-4321994.543
8188936.161	11856454.1	-3667517.937
7879081.918	14627370.91	-6748288.996
47137539.66	52380486	-5242946.337
25618288.65	38139744.62	-12521455.97
17634629.39	27281961.12	-9647331.728
9625418.761	15487844.15	-5862425.392

12950372.61	18483596.58	-5533223.968
18957832.13	24395040.93	-5437208.8
4196271.535	5253250.276	-1056978.741
17240432.34	24156965.81	-6916533.467
3266219.829	4169558.655	-903338.8256
3987887.931	4716524.607	-728636.6763
22300229.89	26571023.88	-4270793.993
2330287.033	3450186.109	-1119899.076
392056.1929	229741.9097	162314.2832
22823042.68	39471424.43	-16648381.75
7981482.371	12399691.05	-4418208.682
11474636.41	19962734.32	-8488097.912
22387309.03	27991760.35	-5604451.316
23342036.78	29031010.53	-5688973.749
8796322.521	9797244.892	-1000922.371
6965908.956	12041976.4	-5076067.448
11884579.99	25194766.75	-13310186.76
6753817.032	10220258.79	-3466441.755
2557027.55	9013346.049	-6456318.499
4661320.033	11355596.46	-6694276.43
5280172.246	10071662.35	-4791490.102
70659306.28	103559481.2	-32900174.94
53552426.71	97587253.18	-44034826.47
2098806.732	1967595.01	131211.7219
52964307.95	68000484.34	-15036176.4
52946992	54010170.37	-1063178.369
3881786.614	5391279.421	-1509492.807
15048781.99	19026120.46	-3977338.472
181156.6286	256250.199	-75093.5704
10306008.88	15246946.8	-4940937.919
4074775.757	5502552.773	-1427777.016
8271321.989	12088548.92	-3817226.926
10992378.48	13699190.75	-2706812.27
3114438.426	4934326.781	-1819888.355
3202985.695	6923709.763	-3720724.068
22372222.29	24356004.44	-1983782.144
11720114.31	17052795.36	-5332681.044
10056794.22	12197874.88	-2141080.666
4089889.483	8510784.76	-4420895.277
7100551.36	8583679.27	-1483127.91
9705924.96	12902162.26	-3196237.3
2301448.632	2960923.948	-659475.3162
11275502.76	11580646.19	-305143.4303
1350401.607	1558465.098	-208063.4914
2014474.389	2303313.724	-288839.3348
8619170.479	10298846.53	-1679676.052
2621353.633	6557603.692	-3936250.059

24422.0289	28604.9688	-4182.9399
14280226.95	22641492.57	-8361265.623
4124875.446	5845202.889	-1720327.442
6708657.004	9192932.593	-2484275.589
13547593.9	14850846.79	-1303252.891
9385477.095	15507387.19	-6121910.095
4435907.489	4739467.858	-303560.3687
3463046.168	6099456.585	-2636410.417
9869299.228	13244118.24	-3374819.007
3062424.428	4942028.172	-1879603.744
128618.0927	309503.5009	-180885.4082
1528926.569	4940309.886	-3411383.318
2622887.375	4858535.299	-2235647.923
34572847.67	53894506.93	-19321659.26
28107711.41	49878361.45	-21770650.04
1638223.13	1899862.3	-261639.17
9195747.46	7918003.68	1277743.78
5637174.55	5673957.24	-36782.69
554313.61	1086156.1	-531842.49
3326467.35	3545706.11	-219238.76
271842.92	373611.28	-101768.36
732476.87	757721.97	-25245.1
593224.2	1126679.73	-533455.53
1873351.93	1804568.89	68783.04
2713997.78	2086081.65	627916.13
134889.73	289955.91	-155066.18
220382.76	282239.5	-61856.74
7473741.02	5839671.07	1634069.95
2833164.4	4955436.52	-2122272.12
6480187.9	6565745.5	-85557.6
2393374.33	3084815.07	-691440.74
623577.99	676418.35	-52840.36
661351.48	625225.77	36125.71
775270.29	603068.81	172201.48
2884060.09	3476214.48	-592154.39
1324991.5	1034322.94	290668.56
1286551.16	918079.57	368471.59
1110450.47	952226.09	158224.38
83116.77	293666.65	-210549.88
9667.23	39718.79	-30051.56
6575443.78	7095683.59	-520239.81
2101583.26	1658981.91	442601.35
4174839.3	5360207.13	-1185367.83
5574596.23	2746552.08	2828044.15
1961096.02	1614913.08	346182.94
1072092.96	1383653.61	-311560.65
739019.79	1459422.33	-720402.54

3575127.7	7068342.63	-3493214.93
1836304.68	1685009.74	151294.94
1237928.62	816222.37	421706.25
121388.1	181900.73	-60512.63
204656.47	988842.38	-784185.91
593246.06	1567543.26	-974297.2
11483266.3	5961343.86	5521922.44
2940159.35	8958894.13	-6018734.78
1486720.12	2047421.95	-560701.8304
10705993.93	10084061.39	621932.543
5959516	5979290.059	-19774.059
528762.78	1015436.974	-486674.194
3134652.25	3481150.571	-346498.321
86548.2	181805.734	-95257.534
686862.96	871520.719	-184657.759
476873.68	1275392.868	-798519.1875
1488756.13	1999092.527	-510336.397
2620893.89	2311509.883	309384.0069
142429.88	123318.268	19111.612
204235.7	461978.65	-257742.95
6281951.45	5147626.148	1134325.302
3416626.08	5960339.633	-2543713.553
3046444.83	2890374.313	156070.517
3092782.22	3682125.374	-589343.154
750990.28	858936.82	-107946.54
579089.35	930018.76	-350929.41
302377.48	262996.554	39380.926
1410251.69	1743993.91	-333742.22
822799.28	1237534.997	-414735.717
1088271.29	714284.241	373987.049
1285072.51	1156686.811	128385.699
144550.56	282716.8112	-138166.2512
13242.61	17150.9465	-3908.3365
7112015.89	7188348.334	-76332.444
2025737.33	1558199.211	467538.1187
4176773.11	5313659.162	-1136886.052
4890206.53	3472153.953	1418052.578
1954344.52	1886700.082	67644.4384
972000.61	1094129.356	-122128.746
829704.47	1863575.143	-1033870.673
3962637.14	6909423.001	-2946785.861
2221822.02	1838462.396	383359.6242
1270611.57	919951.2929	350660.2771
99486.57	280268.9431	-180782.3731
264892.05	987911.4159	-723019.3659
613887.27	1284887.804	-671000.5338
12839469.96	6660781.895	6178688.065

2960060.47	9286481.081	-6326420.611
1398725.484	2249223.279	-850497.7952
10449512.06	10322682.33	126829.7345
10240433.74	9461100.846	779332.8986
883883.9623	1530908.946	-647024.9837
2715004.906	3268468.264	-553463.3585
53096.4209	71894.461	-18798.0401
1264196.272	1971236.071	-707039.7994
1181412.218	1891266.238	-709854.0203
1614962.392	1870386.019	-255423.6274
2488005.222	2252428.582	235576.6403
328171.6119	253953.807	74217.8049
167650.6057	459280.89	-291630.2843
7207349.222	5634833.055	1572516.167
2976500.612	5490866.247	-2514365.635
3933984.445	3867308.246	66676.1985
2469292.933	3734050.231	-1264757.298
621883.8039	1177019.642	-555135.8381
413114.0964	1079858.46	-666744.3636
654073.4447	679013.92	-24940.4753
2213719.654	2534338.63	-320618.9762
1032474.737	1466039.983	-433565.2456
1281269.199	830405.783	450863.4161
456199.5993	656074.446	-199874.8467
188491.2321	293611.8587	-105120.6266
22594.5282	45666.7583	-23072.2301
8049994.322	9508279.617	-1458285.295
1970719.954	1462053.563	508666.3911
5545048.34	5796699.536	-251651.1961
6266081.286	3722641.445	2543439.842
2254671.363	2118839.493	135831.87
1155303.038	1179257.87	-23954.8322
1094922.655	1990404.079	-895481.4242
3730552.533	6833486.14	-3102933.607
2351569.248	2296641.328	54927.9206
1219331.72	870683.3225	348648.3973
224565.5866	449517.0505	-224951.4639
180094.8437	901475.2927	-721380.449
690003.1249	1538743.698	-848740.5735
11067748.72	6649652.211	4418096.512
3249758.614	9917581.122	-6667822.508
957833.3087	1206158.453	-248325.1443
13459042.74	10913472.58	2545570.164
8965553.66	7788856.754	1176696.906
1073677.324	1267030.593	-193353.2691
2442457.127	2827595.438	-385138.3113
10851.397	19165.887	-8314.49

1270573.896	1623740.25	-353166.3544
1109678.909	2168973.983	-1059295.074
1378336.185	1521996.112	-143659.9269
3528032.972	3500380.397	27652.575
177077.9608	437185.174	-260107.2132
-498679.0461	584730.341	-1083409.387
7779048.775	6034339.577	1744709.198
4032431.182	6270202.078	-2237770.896
4590082.52	3671741.207	918341.3127
3612301.708	4522519.205	-910217.4969
423039.134	1000826.364	-577787.23
952768.5605	1291185.724	-338417.1635
347166.4823	323077.838	24088.6443
5123332.053	4916078.35	207253.703
1593761.615	1626835.024	-33073.4091
1195235.231	696318.821	498916.4097
1485583.634	1156035.4	329548.2341
279665.7159	314549.1805	-34883.4646
35258.0362	27261.5975	7996.4387
9117582.039	11290038.9	-2172456.861
2132693.7	1374274.523	758419.1776
6633357.523	5388787.467	1244570.057
5857052.608	4067030.094	1790022.513
2567497.291	2175440.887	392056.4043
1345377.639	932487.3455	412890.2934
1061076.133	2161064.841	-1099988.708
4471321.884	7072688.866	-2601366.983
3876735.95	2990963.796	885772.1541
1486994.552	871829.9509	615164.6011
397868.2964	324382.534	73485.7624
188281.749	681608.5633	-493326.8143
683939.6571	1495803.923	-811864.2654
12848679.23	6615700.387	6232978.844
3797173.385	10122617.46	-6325444.071
3344287.032	2034658.751	1309628.281
6149473.772	6005116.44	144357.3319
4247354.395	3773851.61	473502.7852
235464.2374	400281.851	-164817.6136
1469486.677	1775710.769	-306224.0917
661377.8522	770571.129	-109193.2768
245308.1439	879370.146	-634062.0021
1471807.035	1239446.57	232360.4646
1237545.164	1242730.289	-5185.1251
235502.6814	179032.6007	56470.0807
160284.5334	294974.574	-134690.0406
4171415.824	2830496.48	1340919.344
849898.2769	3003085.516	-2153187.239

1666412.589	1879631.654	-213219.0653
440800.4401	992317.635	-551517.1949
489988.1845	568565.941	-78577.7565
276899.6771	347621.195	-70721.5179
86294.0646	132033.526	-45739.4614
1575876.671	1076157.141	499719.5302
1512475.247	875757.077	636718.17
401650.6957	270746.773	130903.9227
936070.4913	783501.236	152569.2553
379816.4351	398982.19	-19165.7549
8483.832	5630.6615	2853.1705
4068149.973	5765597.229	-1697447.256
811175.2934	578591.5836	232583.7098
2327793.258	2137297.699	190495.5595
2671514.425	1576825.921	1094688.503
1285120.624	1270569.154	14551.4702
485464.3258	431772.5163	53691.8095
400363.7646	886598.8901	-486235.1255
2784621.704	4222610.129	-1437988.425
1287991.794	1234823.505	53168.2889
558432.5659	397233.3966	161199.1693
45916.8225	58602.9157	-12686.0932
53356.2793	237632.8745	-184276.5952
300198.7269	639185.5813	-338986.8544
6572056.288	3068300.737	3503755.55
1414439.311	4706019.089	-3291579.777