

ATTESTATION

I, Jay Gonzalez, hereby certify that I am legally authorized and empowered to represent CeliCare Health Plan of Massachusetts, Inc. for the purposes of this testimony, and that this testimony is signed under the pains and penalties of perjury.

Signed:  _____

Jay Gonzalez, Plan President and Chief Executive Officer
CeliCare Health Plan of Massachusetts, Inc.

Date: 09/11/2015



Exhibit A: Notice of Public Hearing

Pursuant to M.G.L. c. 6D, § 8, the Health Policy Commission (HPC), in collaboration with the Office of the Attorney General (AGO) and the Center for Health Information and Analysis (CHIA), will hold a public hearing on health care cost trends. The hearing will examine health care provider, provider organization and private and public health care payer costs, prices and cost trends, with particular attention to factors that contribute to cost growth within the Commonwealth's health care system.

Scheduled hearing dates and location:

Monday, October 5, 2015, 9:00 AM
Tuesday, October 6, 2015, 9:00 AM
Suffolk University Law School
First Floor Function Room
120 Tremont Street, Boston, MA 02108

Time-permitting, the HPC will accept oral testimony from members of the public beginning at 4:00 PM on both days. Any person who wishes to testify may sign up to offer brief comments on a first-come, first-served basis when the hearing commences on October 5 and 6.

Members of the public may also submit written testimony. Written comments will be accepted until October 9, 2015 and should be submitted electronically to HPC-Testimony@state.ma.us, or, if comments cannot be submitted electronically, sent by mail, post-marked no later than October 9, 2015, to the Health Policy Commission, 50 Milk Street, 8th floor, Boston, MA 02109, attention Lois H. Johnson.

Please note that all written and oral testimony provided by witnesses or the public may be posted on the HPC's website: www.mass.gov/hpc.

The HPC encourages all interested parties to attend the hearing. For driving and public transportation directions, please visit: <http://www.suffolk.edu/law/explore/6629.php>. Suffolk University Law School is located diagonally across from the Park Street MBTA station (Red and Green lines). Parking is not available at the law school but information about nearby garages is listed at the link provided.

If you require disability-related accommodations for this hearing, please contact Kelly Mercer at (617) 979-1420 or by email at Kelly.A.Mercer@state.ma.us a minimum of two (2) weeks prior to the hearing so that we can accommodate your request.

For more information, including details about the agenda, expert and market participant panelists, testimony and presentations, please check the Annual Cost Trends Hearing section of the HPC's website, www.mass.gov/hpc. Materials will be posted regularly as the hearing dates approach.

Exhibit B: Instructions and HPC Questions for Written Testimony

On or before the close of business on September 11, 2015, please electronically submit written testimony signed under the pains and penalties of perjury to: HPC-Testimony@state.ma.us. **You may expect to receive the questions and exhibits as an attachment received from HPC-Testimony@state.ma.us.** If you have any difficulty with the template or did not receive it, please contact Kelly Mercer at Kelly.A.Mercer@state.ma.us or (617) 979-1420.

Please complete your responses in the provided **Microsoft Word** template. If necessary, you may include additional supporting testimony or documentation in an Appendix. Please submit any data tables included in your response in **Microsoft Excel or Access format**.

We encourage you to refer to and build upon your organization's 2013 or 2014 Pre-Filed Testimony responses, if applicable. Additionally, if there is a point that is relevant to more than one question, please state it only once and make an internal reference. If a question is not applicable to your organization, please indicate so in your response.

The testimony must contain a statement that the signatory is legally authorized and empowered to represent the named organization for the purposes of this testimony, and that the testimony is signed under the pains and penalties of perjury. An electronic signature will be sufficient for this submission.

If you have any other questions regarding this process or regarding the following questions, please contact Lois Johnson at Lois.Johnson@state.ma.us or (617) 979-1405.

[Remainder of page intentionally left blank]

Exhibit B: HPC Questions for Written Testimony

1. Chapter 224 of the Acts of 2012 (Chapter 224) requires health plans to reduce the use of fee-for-service payment mechanisms to the maximum extent feasible in order to promote high-quality, efficient care delivery.
 - a. Please describe your organization's efforts in the last 12 months to meet this expectation. Attach any analyses your organization has conducted on the effects of alternative payment methods (APMs) on (i) total medical expenses, (ii) premiums, and (iii) provider quality. Please specifically describe efforts and analyses related to bundled payment and similar payment methods.

CeltiCare Health is committed to helping the Commonwealth meet its payment reform policy objectives and to achieving better health outcomes at lower costs. To date, CeltiCare Health has been a relatively small scale, statewide health plan with virtually all of its membership coming from the government-subsidized Commonwealth Care program and, since 2014, MassHealth's CarePlus program. CeltiCare Health's historically small membership and complete shift of its membership base in 2014 resulting in immature claims and utilization experience to inform alternative payment arrangements has posed challenges to its ability to implement alternative payment arrangements.

From 2010 through the end of the Commonwealth Care product in 2015, CeltiCare maintained a Shared Savings initiative with our largest provider system, representing approximately 25% of our enrollment at the time. In this arrangement, we provided upside-only, shared savings to the Provider based upon the total cost of care for the Member. Payment of the shared savings and any quality bonus was predicated on achieving targeted quality measures. The program's quality and performance measures include diabetes, asthma, and prenatal care indicators as well as prescribing rates of generic medications when appropriate. CeltiCare Health also participated in the Commonwealth's Primary Care Medical Home initiative.

When CeltiCare Health began providing coverage to participants in MassHealth's new CarePlus program in 2014 and assumed a largely new membership base, CeltiCare committed to working with MassHealth to help it achieve its payment reform objectives. In 2014, MassHealth requested that its participating health plans and providers adopt a payment reform model it developed and referred to as its Primary Care Payment Reform Initiative. CeltiCare developed the internal contracting and reporting infrastructure to implement the PCPRI program and worked closely with MassHealth to try to implement the program. However, based on MassHealth's membership threshold requirements, CeltiCare Health only had three contracted provider systems with sufficient scale of CeltiCare Health members to be eligible to participate in PCPRI with CeltiCare Health, and none of the three provider organizations were willing to do so despite CeltiCare Health's efforts. Another relatively unique challenge CeltiCare Health faced in implementing PCPRI was the lack of any historic claims and utilization experience for the large majority of its membership to inform adequate pricing of capitation payments.

Internally, CeltiCare Health has developed a robust contracting and reporting infrastructure to support a broad array of alternative payment arrangements that we believe can help drive better cost and quality outcomes. We recently shared these capabilities with MassHealth and conveyed our desire to leverage these capabilities through new alternative payment arrangements with providers in 2015. However, in light of the significant effort MassHealth is currently undertaking to develop a new alternative payment framework for the entire MassHealth program and their interest in implementing a common value-based purchasing approach across the entire program to

better leverage purchasing power to achieve better outcomes, MassHealth has indicated that they would prefer we postpone entering into alternative payment arrangement until its process is complete in order to ensure that our approach is aligned with MassHealth's ultimate, program-wide framework. In the interest of supporting MassHealth and helping it achieve its broader program objectives, we have not pursued alternative payment arrangements with providers in 2015, and we look forward to working hand-in-hand with MassHealth to implement its program-wide value-based purchasing approach when determined.

- b. Please describe specific efforts your organization plans to undertake between now and October 1, 2016 to increase the use of APMs, including any efforts to expand APMs to other primary care providers, hospitals, specialists (including behavioral health providers), and other provider and product types. Please specifically describe efforts related to bundled payment and similar payment methods.

Please see answer to subsection (a) above.

CeltiCare Health believes it is well-positioned to help MassHealth implement whatever value-based purchasing strategy it determines is in the best interests of the MassHealth program. As noted above, CeltiCare Health has developed a robust contracting and reporting infrastructure to support a wide variety of alternative payment methodologies. Leveraging this infrastructure to implement MassHealth's preferred approach will be a top priority for CeltiCare Health in 2016.

- c. In its 2014 Cost Trends Report, the HPC stated that major payers and providers should begin introducing APMs for preferred provider organization (PPO) covered lives in 2016, with the goal of reaching at least one-third of their PPO lives that year. Please describe your plans to achieve this goal. Additionally, please describe any specific barriers for moving self-insured business into APM arrangements.

This does not apply given CeltiCare Health as it does not offer any PPO products.

2. Describe your organization's efforts to develop insurance products or plan designs that encourage members to use high-value (high-quality, low-cost) services, settings, and providers, and detail progress made over the past year. Example of such efforts include: phone triage or telehealth services; targeted information about and incentives to reduce avoidable emergency department (ED) use; and reference pricing, or cash-back reward programs for using low-cost providers. Please describe the result of these efforts and attach any quantitative analyses your organization has conducted on these products, including take-up, characteristics of members (e.g., regional, demographic, health status risk scores), members' utilization of care, members' choice of providers, and total medical spending. Please describe efforts your organization plans between now and October 1, 2016 to continue progress in encouraging members to use high-value services, settings and providers. What barriers have you identified to introducing insurance products or plan designs that encourage members to use high-value services, settings and providers in Massachusetts?

Ambetter My Health Pays™ Rewards Program

Ambetter encourages our members to receive annual preventive services through our unique

rewards program. The Ambetter My Health Pays™ Rewards Program rewards members for demonstrating healthy behaviors. Members can earn rewards for doing the following:

- Completing a Member Welcome Survey within the first 90 days of membership which verifies demographic and health information;
- Receiving their annual wellness exam; and
- Receiving their flu shot

The rewards are sent out automatically to the member and are loaded on to a reloadable health restricted debit card. Members may utilize the debit card to pay for cost sharing (copayments, coinsurance, or deductibles) or to help pay their premium payment.

Wellness Program Reimbursement

Ambetter also provides incentives to members for staying active. When Ambetter members participate in our approved programs, they can get reimbursed for certain activities. Ambetter members are reimbursed \$20 for every month they visit the gym of their choice at least eight times, or receive reimbursement for a pair of running shoes. They will also be reimbursed up to \$150 of their registration fee and weekly dues for participation in a Weight Watchers® Traditional or At-Work program.

3. Chapter 224 requires payers to provide members with requested estimated or maximum allowed amount or charge price for proposed admissions, procedures and services through a readily available “price transparency tool.” Please describe your organization’s progress in meeting this requirement. If you had a tool in place prior to November, 2012, please describe your organization’s prior experience, including how long your tool has been in use and any changes you have made to the tool over time.
 - a. Using **HPC Payer Exhibit 1** attached, please provide available data regarding the number of individuals that seek this information and identify the top ten admissions, procedures and services about which individuals have requested price information for each quarter listed below and the number of inquiries associated with each.
 - b. Do consumers have the ability to access cost data for the following types of services (yes/no)? If no, please explain.

Inpatient	Yes	<input checked="" type="checkbox"/>	No	<input type="checkbox"/>
Outpatient	Yes	<input checked="" type="checkbox"/>	No	<input type="checkbox"/>
Diagnostic	Yes	<input checked="" type="checkbox"/>	No	<input type="checkbox"/>
Office Visits (medical)	Yes	<input checked="" type="checkbox"/>	No	<input type="checkbox"/>
Office Visits (behavioral)	Yes	<input checked="" type="checkbox"/>	No	<input type="checkbox"/>

37T

- c. Does consumer-accessible cost data reflect actual provider contracted rates? If no, please explain.

Yes No

37T

- d. Do you provide actual out-of-pocket estimates that reflect a member's specific benefits and deductible status? If no, please explain.

Yes No

37T

- e. Do you provide provider quality and/or patient experience data with your cost data? If no, please explain.

Yes No

CeltiCare Health does not display provider quality or patient experience data at this time. Due to low membership totals and claims experience for our Marketplace plans, the limited data we have would not provide an accurate representation of that experience.

- f. Please describe any information you have collected regarding how your members use this information and the value of this information to members. Please describe any analyses you have conducted to assess the accuracy of estimates provided and the impact of increased price transparency for members as well as any limitations in the tools you have identified and ways your organization plans to address them.

CeltiCare Health did extensive testing of our cost transparency tool prior to the launch in January 2015 to ensure that the claims data used from our Commonwealth Care experience and the small Marketplace membership we had in 2015 was displaying accurately based upon the members' plan design and the providers' contractual reimbursement rates. We have not conducted any additional analysis of how our members use the tool because we have such low utilization as reflected in the HPC Payer Exhibit 1 template and eight months experience with the tool. We feel any analysis at this time would not be an accurate representation of the value our members receive by using the cost transparency tool.

CeltiCare Health does have a limitation with displaying the member's copayment amount and we are working to resolve it. Our members do receive estimates based on their annual deductible, any applicable coinsurance, and annual out of pocket maximums.

4. The Massachusetts health care environment has recently undergone significant changes, including multiple hospital and physician group acquisitions and affiliations. Please describe your views on recent market changes, including any impacts these changes have had on costs (e.g., prices and total medical expenses), referral patterns, quality and access to care.

The leverage of large, consolidated provider systems does influence both our network strategy and adversely impacts our ability to negotiate sustainable reimbursement rates with providers. As a small scale plan focused almost entirely on providing coverage to members of the MassHealth program, CeltiCare Health is already constrained in its ability to negotiate sustainable contracts with providers while maintaining adequate network access for its members. This challenge is compounded by provider consolidations. This is particularly true when a provider system achieves significant market share in a particular geographic area of the state and CeltiCare Health is effectively required to contract with them in order to maintain network adequacy in that region.

The true challenge faced in the Massachusetts health care market is how to achieve the benefits of providers participating in comprehensive systems or networks capable of coordinating and managing care that enable them to assume accountability for cost and quality outcomes, while at the same time not creating a market that consists of a handful of large provider systems that leverage significant market power to obtain higher reimbursement rates that result in higher health care costs. In order for CeltiCare Health to continue to provide value to our members and to the Commonwealth through our participation in the MassHealth program, the Commonwealth needs to play an active role in ensuring that the right balance is struck in how the provider market reorganizes itself in order to ensure the benefits of delivery system reform are achieved and are not compromised by the potential adverse impacts of outsized market power and the lack of a competitive market.

5. As documented by the Office of the Attorney General in 2010, 2011, and 2013; by the Division of Health Care Finance and Policy in 2011; by the Special Commission on Provider Price Reform in 2011; by the Health Policy Commission in 2014; and by the Center for Health Information and Analysis in 2012, 2013, and 2015, prices paid to different Massachusetts providers for the same services as well as global budgets vary significantly across different provider types, and such variation is not necessarily tied to quality or other indicia of value.
 - a. In your view, what are acceptable and unacceptable reasons for prices for the same services, or global budgets, to vary across providers?

There are many factors at play that will cause the reimbursement rates to vary across providers for the same services provided. Some are legitimate while others just add to health care cost without improving quality of care.

Some of the legitimate reasons reimbursement rates may differ are:

- The provider's patients are sicker or require more attention than average – their case mix or severity measures are higher or their population is such that they require additional services not typical of the average.
- The outcomes of the service reflect higher quality provided by the physician or group.
- Legitimate local factors that raise the cost to the provider of operating in that location.

Some of the factors that contribute to higher cost but not necessarily better care are:

- Local geographic monopoly without corresponding higher costs of operation in that area.
 - Affiliations with physician groups or hospitals that pay more than what the physician would receive as an independent practitioner.
 - Improper setting for procedure, such as a procedure being performed in an outpatient facility setting when it can be performed in a physician's office. Another example is when a service that is treatable at a community hospital is performed at an academic medical center, typically at higher cost.
- b. What steps are you taking to address this variation in prices and budgets? Please include any approaches you have considered implementing to reduce the role that past or current fee-for-service price disparities play in global budgets.

Please see responses to question 1 regarding CeltiCare Health's plans with respect to alternative payment arrangements, which is a key strategy for offering value to providers who perform well in exchange for more reasonable pricing that mitigates the price variation seen in the market.

The challenges CeltiCare Health faces in negotiating with consolidated providers described in the answer to question 4 above also constrain its ability to effectively address price variation among providers. Nevertheless, CeltiCare Health has made significant progress in negotiating sustainable contracts with a broader scope of providers across the Commonwealth over the last two years. For example, during that time, CeltiCare Health has added a new Boston-based tertiary provider, new hospital systems in the northern, southern and western regions as well as a new tertiary provider in Worcester. In order to achieve sustainable contract rates from providers that mitigate price variation, CeltiCare Health is focused on offering providers value through the various types of support it offers providers in achieving better outcomes for members. CeltiCare Health has worked to achieve valued partnerships with its providers that justify more reasonable, sustainable reimbursement rates for services accessed by its MassHealth membership.

6. Please describe your policies and procedures, including notice policies and protections from out-of-network charges, for members referred to out-of-network providers and cases in which services at in-network facilities are provided by out-of-network providers. Please describe any policies you have in place to ensure that a referring provider informs a patient if a provider to whom they are referring the patient is not in the patient's insurance network.

For the Qualified Health Plan and MassHealth CarePlus products, the CeltiCare Health includes standard language in negotiated single case agreements with non-participating providers that state that Providers shall not seek or accept payment from any Covered Person(s) for any HMO Covered Service rendered, nor shall Providers have any claim against or seek payment from the Executive Office of Health and Human Services (EOHHS) for any HMO Covered Service rendered to a Covered Person(s). Instead, Providers shall look solely to CeltiCare for payment with respect to HMO Covered Services rendered to Covered Person(s). PCPs are encouraged to direct the Member to the appropriate Specialty Care services within the CeltiCare Health

Network. An Out-of-Network referral requires Prior Authorization. CeltiCare Health expects all Specialists to provide feedback to the PCP, in writing, either electronically or in hard copy, informing the PCP of the outcome of the examination, tests, and/or any treatment recommendations given to the PCP’s patient. When Medically Necessary services are beyond the scope of the Specialist’s practice, or, when a second opinion is requested, the Specialist may refer the Member to an Out-of-Network Specialist. In that case the referring Specialist is required to submit the request for a Prior Authorization.

7. The Medicare Payment Advisory Commission and others have noted that patient visits to outpatient-based practices, which can bill a “facility fee,” are increasing faster than visits to freestanding practices. Please describe any shift you have observed toward increased use of outpatient-based practices and the impact of facility fees and any such shift toward the use of outpatient-based practices on health care costs, quality and access.

We have not seen any shift of physician services from an office setting to an outpatient hospital setting. We looked at the monthly share of primary care and specialty services by their place of service. The average share of these claims by their place of service is shown in the table below. There was no material trend away from services at a physician’s office towards an outpatient facility setting.

Share in Provider Office Setting		
	2013	2014
Commonwealth Care	72.1%	73.5%
CarePlus		73.2%

Please see the attachment with details regarding place of service for members of the Commonwealth Care and CarePlus programs in 2013 and 2014.

8. The Commission has identified that spending for patients with co-morbid behavioral health and chronic medical conditions is 2 to 2.5 times as high as spending for patients with a chronic medical condition but no behavioral health conditions. As reported in the July 2014 Cost Trends Report, higher spending for patients with behavioral health conditions is concentrated in emergency departments and inpatient care.
 - a. Please describe your efforts in the past 12 months to effectively address the needs of these patients in an integrated manner, clearly identifying areas of progress, attaching any attaching analyses you have conducted.

The Integration of Physical and Behavioral Case Management is a concept that has been contemplated by many organizations around the country, and while the details of each effort vary, the common thread running through most, if not all, is an effort to reestablish the connection between an individual's Behavioral Health (BH) and their Physical Health (PH); a connection that has been artificially broken by the historical structure of the US Health Care delivery model.

A key component often lacking thus far has been the financial integration of both the BH and PH Case Management entities; most often in the US, BH services are “carved out” to

a third party, who, while purporting to be providing Integrated Care Management (ICM) through co-location of staff, are actually operating under different financial and infrastructural silos which limit the ability to truly integrate.

CeltiCare Health and its sister company Cenpatco Behavioral Health, Inc. (Cenpatco), both wholly owned subsidiaries of Centene Corporation, St. Louis Missouri, have been delivering Managed Healthcare in the Massachusetts market since 2009. Early on, one single clinical BH staff member could be found among the many PH staff in the local CeltiCare Health office. Nearly all of the BH clinical activity was performed telephonically from afar. But as the CeltiCare Health leadership began to understand their covered population better (government subsidized individuals obtaining coverage through early versions of the Massachusetts healthcare exchange, including a significant component of "legal immigrants" who were not yet eligible for other Medicaid based government subsidies), an appreciation of the penetration of mental health and substance use disorders among the membership emerged, creating an opportunity to progress from a siloed model to one of complete integration, both operational and financial.

As a first step, all BH and PH case managers, care coordinators and medical directors were brought together weekly via telephonic rounds, introducing the entire team to the potential value that a more significant collaborative effort would offer. It was discovered, for example, that there were significant barriers to obtaining post hospital home care services for members with comorbid BH and PH conditions after discharge from an acute BH setting. This was determined to be based predominantly on a limited understanding by the BH team about the logistics of creating such arrangements, along with their belief that they could not request such PH-based services since they were not part of the "capitated" basket of services the BH team was responsible for coordinating or managing.

Similarly the PH team was introduced to a wide variety of "abbreviations" representing an array of behavioral health services that were previously unknown to them (e.g., IOP, CSP, SOAP, DDART, etc.), which began to fill in some identifiable service gaps for members who had been failing in their PH care adherence, but who's failures were being driven predominately by under managed BH conditions (e.g., anxiety, mood disorder and other serious mental illness, SUD, etc.).

These experiences led the clinical leadership of both disciplines to begin the conversation about, and ultimately develop, an ICM model that sought to achieve a number of critical goals:

1. Address in a comprehensive way the clinical needs of both BH and PH for all members.
2. Create an environment within CeltiCare Health that would allow every member to have access to (as their clinical needs dictated) a full complement of staff who are well versed in the delivery and coordination of services aimed at all PH and BH needs.

3. Develop an ongoing training program that would encourage a deeper understanding of BH care management by PH staff, and vice-versa.
4. Provide a “Single-Point-of-Contact” for each “engaged” member, avoiding redundant and confusing calls from multiple staff members from a variety of different disciplines.

To enhance the likelihood of success, a Project Manager was appointed, and a combined BH/PH leadership team was assembled that drew upon the Care Management literature, (which provided the theoretical background for the approach), a significant body of programmatic development work that had previously been completed by Cenpatico, (given their national presence and experience), and CeltiCare Health’s own internal infrastructure and resources. The team set out to understand the best ways to identify members suitable for a pilot, appropriate engagement techniques, effective assessment methods and tools, care plan development, and most importantly, cross discipline clinical collaboration.

For this initial pilot, which began in June of 2014, two Case Managers (one BH and one PH) were invited to participate in this groundbreaking effort. These staff members were chosen based upon their prior experience and comfort with an “outside-the-box” approach to their work. Early on it was learned that a clear set of workflow tools were required to assure optimal use of staff time, for coordinating the collaborative approach to cases, and to assure that assessment and engagement were performed in a manner that was most likely to achieve successful longer term involvement by members.

After four months of effort, the specific tasks and workflows required for broader success were identified; they fell into roughly the following ten categories:

1. Collaborative Training
2. Team Development
3. Member Identification
4. Combined Assessment
5. Member Engagement
6. Plan Collaboration
7. Care Plan Development
8. Barrier Identification
9. Outcomes Measurement
10. Financial Integration

For Training, both BH and PH trainers were invited to work with Subject Matter Experts to develop a set of 4 two-hour introductory sessions, followed by a minimum of ten content specific discussions to facilitate the BH-PH collaborative process.

Determined to offer an ongoing team spirit, and in consideration of previously recognized benefits of staff proximity reported in the literature, staff have been arranged into functional teams that are physically proximate to one another. Each team consists of a

full complement of medical and behavioral staff functions (Case Manager, Care Coordinator, etc.), has a specific external geographic focus (e.g., north of Boston, south of Boston, etc.), and each team operates in an office cubicle arrangement such that they are all within sight of and speaking distance of one another, thus facilitating optimal collaboration.

Member Identification efforts have been driven by a desire to create a Case-Controlled study population, being performed in conjunction with a Health Economist at Harvard with prior experience as the head of OMB in Washington DC. An algorithm was developed within Impact Pro© from Optum®, Inc. which allows for the identification of members with both Serious Mental Illness and Chronic PH conditions.

Staff is being trained to perform one comprehensive BH/PH Assessment, rather than having to go through two separate yet often duplicative sets of questions. A combined BH/PH team continues to work to create this single assessment.

To assist with Engagement, staff participates in ongoing Motivational Interviewing Training to help drive home the approach to meeting the member “where s/he is at,” supporting a member centric care planning approach necessary for success.

Collaboration among staff has been promoted by holding 30 minute “huddle” calls each morning among all team members and clinical leadership, during which both case updates and new members are presented for team review. Individual Care Managers (BH and PH) are assigned to present on specific days of the week, and each is responsible for reporting out not only on their members but on the substance of the collaborative conversations that have been held with their teammates.

The CeltiCare Health IT platform, TruCare® by Casenet, Inc., supports a single Plan of Care for both BH and PH to access, giving all team members the ability to work from one document. The Care Plan owner is the specific Case Manager (medical or behavioral) who has become the Single-Point of Contact for the member, but all can document within it.

During daily morning “huddles”, presenters are asked to identify specific Barriers to success, the efforts they have made to overcome such barriers, and the team is then asked to provide assistance in thinking through alternative approaches.

Specific Outcome Measures have been developed across four domains:

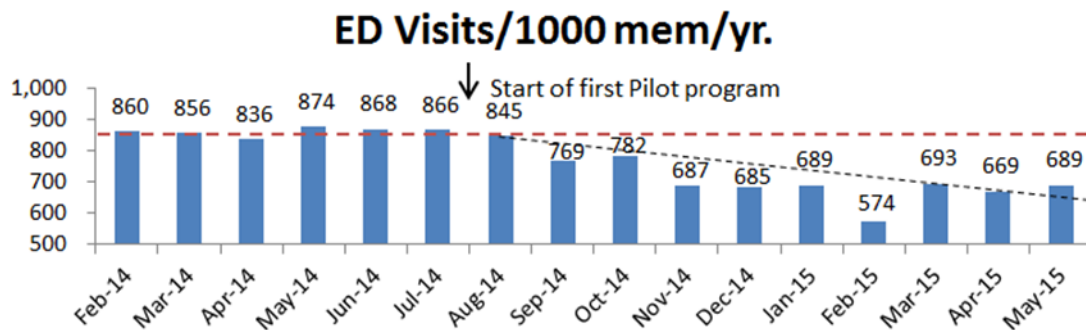
1. Process
2. Clinical/Functional
3. Resource use
4. Cost

Measurement will begin during the Case-Control Study mentioned above, where outcomes among those identified through Impact Pro® who become engaged in

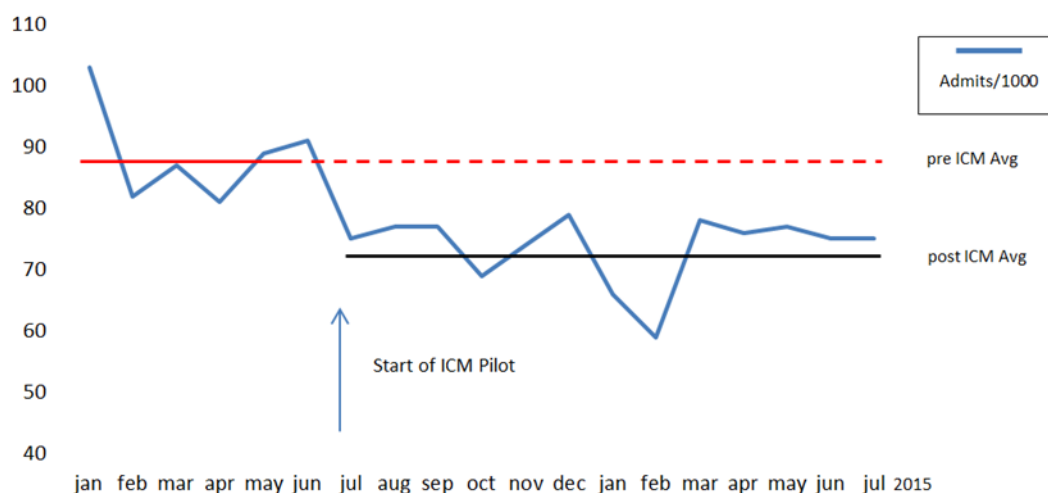
Integrated Care Management will be compared with those who receive the “standard of care” without the benefit of an Integrated approach.

Finally, none of this can succeed as intended until and unless all parties are fully committed to supporting one another with aligned operational and financial goals and performance targets. The team has received the highest level of corporate support to bring all aspects of integration to fruition, with a single leadership team responsible for the performance of all staff members, be they BH or PH.

CeltiCare Health and Cenpatico have invested significant time and resources into assuring the success of this program, and to date we are pleased to be able to report the following early results. While the program began 1 year ago, it has expanded from a small pilot to encompass the entire clinical staff. Important early outcomes are a significant reduction in ED utilization as well as a significant reduction in Inpatient utilization.



CeltiCare Health Inpatient Utilization change with Integrated Care Management



- b. Please describe your specific plans for the next 12 months to ensure that integrated treatment is provided for these patients, including specific goals and metrics you will use to measure performance whether you use a behavioral health managed care organization (“a carve-out”) or manage behavioral health care within your organization.

A key focus of ours over the past year that will continue for the next 12 months has been to build on the success of integrated care management approach by enhancing our management for members with substance use disorders.

As a result of the trends within the Commonwealth regarding opioid use and abuse, and because CeltiCare Health’s CarePlus population resource utilization is driven predominantly by the misuse of addictive substances (i.e., in 2014: 23% of acute inpatient care (non behavioral health) admissions were the direct result of substance misuse, the number one outpatient behavioral health service claim was for methadone treatment, and the most costly overall prescription drug used was Suboxone), we have embarked on a comprehensive effort to reduce the risk of substance misuse by addressing the issue in much the way the Governor’s Task Force recommends addressing the problem.

Opioids 360 considers the health plan's management of all aspects of opioid use, addressing prescriber behavior, inappropriate member utilization, and the treatment of opioid addiction (leading to recovery). Approaching each of these components systematically allows for multiple opportunities to reduce opioid abuse and best support treatment. We depend upon our award winning Integrated Care Management Model (Dorland Award, 2015) to serve as the nidus around which we have built provider and community partnerships to expand member access to supports and services. While in its early stages, we have already seen significant reductions in overall emergency department (ED) utilization since program inception. We are anticipating an increase in community tenure, a decrease in opioid overdose, and improved adherence to treatment and recovery programs.

Description of Population

The ethnically diverse population of 50,000 Medicaid Expansion members includes non-pregnant, childless, non-disabled adults age 21-64 with an income level at or below 133 percent of the FPL. Languages spoken include English 89 percent, Spanish 5 percent, and Portuguese, Vietnamese and Chinese 1 percent each.

Members are located throughout the entire state, and a majority of our programs apply or will apply to the entire population. Some community-based pilot programs are specific to their applicable local geographies, with expectation of expansion as results support.

The Problem

Opioid addiction and its devastating effects have taken center stage at the federal, state and local levels, and have even recently taken on a new blush with the active involvement of law enforcement. The penetration of opioid misuse, diversion and addiction within the Medicaid population as well as the escalating number of deaths due to opioid overdose is well documented, and all stakeholders are endeavoring to uncover the barriers to effective prevention and risk reduction, as well as the keys to successful treatment. The MA Governor's Opioid Working Group undertook a broad evaluation of ways to address the problems of opioid abuse in the state. CeltiCare Health independently launched its own internal task force with support at the highest levels of company leadership to better understand what role our managed care organization can play in this battle to help save member lives. There was much overlap in the outcomes of these two efforts. This shared set of identified opportunities led CeltiCare Health to systematically develop a suite of innovative and collaborative programs with the singular aim of improving the lives of our members.

Incorporating Data Analytics into our efforts

Examples of data use and predictive modeling to help guide our interventions:

- Teaming up with a third-party vendor who specializes in analyzing member specific data to evaluate member utilization habits and predict medication adherence, our first in the nation keystone program will use these tools to identify members at risk for inappropriate opioid utilization and identify members with a high overdose risk.

- Another of our programs uses a calculation of “morphine equivalents” to identify members obtaining excessive opioids, guiding direct member educational outreach regarding the risks of opioid overutilization, misuse, and diversion.
- A third program evaluates provider prescribing behaviors by calculating the percent of prescriptions written by an individual prescriber that are for controlled substances, directing outreach to educate and/or evaluate for fraud waste and abuse risk.

Key Evidence in support of our approach

- Gloucester Police Department Stops Arresting Addicts
- Opioid Diversion in the Medicaid Program
- Rise of Deaths Due to Opioid Overdose
- Massachusetts Governor’s Opioid Working group Recommendations
- Model Policy for the Use of Opioid Analgesics for the Treatment of Chronic Pain
- Opioid Overprescribing
- Peer Supports and Recovery
- Addiction Treatment Principals
- Housing First for the Treatment of Substance Abuse

Overall Program Goals

- Expand the footprint of resources available to address the growing opioid crisis
- Address Mental Health & Substance Use coincident with Medical Health conditions
- Improve access and health outcomes for our most vulnerable populations;
- Promote patient-centered care through engagement and shared decision making;
- Control or reduce the per capita cost of care or increase efficiency;
- Address social determinants of health to increase access and engagement.

Outcomes and Metrics for 2016

- Reduction of opioids available for misuse or diversion by limiting allowed prescribing to 15 days or less (+1 refill within 60 days) for any new short term opioid Rx;
- Increased use of standard of care opioid provider and patient educational tools, including the systematic implementation of a provider/member “opioid contract”;
- Improve the early identification and management of members who are LIKELY to abuse, divert, or overdose BEFORE these actual events occur;
- Expand the reach of our Integrated Care Management capabilities by engaging in successful provider partnerships who already fully support our efforts, or are similarly interested in doing so, and bringing them into our Integrated Care Management team activities;
- Remove barriers to care by critically evaluating prior authorization policies governing addiction treatment programs, including medication therapy, and supporting FDA approved abuse deterrent opioid formulations;
- Expand access to community based services by creating housing first and peer support initiatives, expanding the availability of these critically valuable services beyond state sponsored efforts;
- Expand the provider knowledge base to more effectively manage members who are being prescribed opioids:

- o Share best practice regarding urine drug testing for patients prescribed opioids or who are being treated for addiction
- o Assist Primary Care Providers and other front line providers in the triage of patients with Substance Use Disorder (SUD) to the most appropriate levels of treatment via a Provider Resource Line staffed by subject matter experts who can ensure that a patient leaves his provider’s office with a firm plan of care
 - Reach out to members identified to be at risk along with a “significant other” to provide access to naloxone and engage the latter in overdose rescue training.
 - Continue to reduce preventable use of Emergency Department and Inpatient services

Opioids 360 Programs and Initiatives		
I. Provider Behavior	II. Member Engagement	III. Treatment and Recovery
Foundational Programs		
1. Short Term Rx Limits (15 days) 2. Abuse Deterrent Medications access 3. Prescriber Outlier Management	8. State Prescription Drug Management Program 9. Pharmacy Lock-in Program 10. Integrated Care Management	15. All ASAM Treatment Levels covered without Prior Authorization 16. SUD Disease Management 17. All FDA Approved Medication covered
Innovative Initiatives		
4. Direct PCP Education 5. Member Rx Contracts 6. UDT Pilot 7. Pain Mgmt. Summit	11. MemberConnections® 12. Advocates, Inc. pilot; member outreach and engagement 13. Naloxone SafetyNet 14. RxAnte® opioid misuse risk stratifier	18. Vivitrol® access Pilot 19. Provider SME/Triage Resource Line 20. Housing First Programs 21. Expanding access to SUD Peer Support Specialists

The three intervention domains, Provider Behavior, Member Engagement and Treatment and Recovery each are comprised of seven interventions. We consider the foundational programs to be, relatively speaking, “standard fare” as they build upon efforts commonly found at experienced health plans. The innovative initiatives are those that are generally market leading in the state Medicaid space, and in at least one instance (RxAnte®), will be first in the nation when fully implemented (Fall 2015). It should be noted that these 21 initiatives are in varying states of implementation, from active program with outcomes to active work plan.

Challenges we are addressing as we move forward in overall implementation

- Certain services are not funded by state Medicaid program, e.g., Peer Supports and Case Management type functions from non-CMHC BH providers. We have to invest in those services with the expectation they will improve outcomes and generate a return on investment.
- Staff training regarding the complex care needs of the substance abuse population. Significant cross training has occurred between BH and PH staff, both formally in a

classroom setting, through rounds led by the Medical Director and informally among staff. This training approach was not readily available publically and we had to develop it ourselves.

- Certain components of the provider community see substance use disorders as chronic, untreatable conditions for which we can be perceived as “wasting our time” in making efforts to support these members. This has taken much convincing on the part of staff in relating with predominantly non-BH providers; one successful strategy has been to explain how we can assist the PCP by offloading some of the work they might be “burdened” with to our health plan clinical staff. Better collaboration is seen among provider groups with embedded CM, such as Medical Homes.

Key components of success

The integration of physical and behavioral health care management is a primary key to success. Organizational integration with our behavioral health partner, utilizing a single point of contact approach, and supporting each member holistically in a culturally sensitive manner has allowed us to focus not only on physical and behavioral needs, but also on the social determinants of their health. These efforts have led to a greater level of member engagement and a sense of trust and respect between staff and members. Our outcome of decreased emergency department use is the first of many we expect to accomplish as we proceed forward in this long term investment in our members.

9. Please submit a summary table showing actual observed allowed medical expenditure trends in Massachusetts for CY2012 to CY2014 according to the format and parameters provided and attached as **HPC Payer Exhibit 2** with all applicable fields completed. Please explain for each year 2012 to 2014, the portion of actual observed allowed claims trends that is due to (a) demographics of your population; (b) benefit buy down; (c) and/or change in health status of your population. Please note where any such trends would be reflected (e.g., utilization trend, payer mix trend).

Please see the attached HPC Payer Exhibit 2 with the requested information. Please note that, in order to measure year-over-year trend, the data in the Exhibit is based on the common products we offered during all three years: Commonwealth Care, Commonwealth Choice, and Celtic Direct. Data on our MassHealth CarePlus and our Qualified Health Plan membership that was new in 2014 was not included.

The key factor driving change year over year that is reflected in utilization and service mix is the significant difference in our membership year over year, particularly from 2013 to 2014. The large majority of our 2013 Commonwealth Care membership was transferred to another government-subsidized program and we maintained coverage of only a small share of those members in our 2014 Commonwealth Care product. The remaining members had a better health status than the broader population we covered in 2013, which led to decreases in utilization and service mix.

HPC Pre-Filed Testimony - Payer Questions
HPC Payer Exhibit 1

Health Care Service Price Inquiries CY2014-2015				
Year		Aggregate Number of Inquiries via Website	Aggregate Number of Inquiries via Telephone or In Person	Aggregate Average Time to Resolve Inquiries*
CY2014	Q1			
	Q2			
	Q3		1	2 hours
	Q4			
CY2015	Q1	16	0	realtime
	Q2	16	2	2 hours
TOTAL:		32	3	

** Please indicate the unit of time reported.*

*****In addition, payers MUST identify the Top 10 admissions, procedures and services in the next two (2) tabs ("Top 10 CY2014" and "Top 10 CY2015")*****
All 3 tabs must be completed.

Identify the Top 10 Admissions, Procedures and Services for CY2014 by Quarter:

CY2014 Q1	1	
	2	
	3	
	4	
	5	
	6	
	7	
	8	
	9	
	10	
CY2014 Q2	1	
	2	
	3	
	4	
	5	
	6	
	7	
	8	
	9	
	10	
CY2014 Q3	1	Surgery
	2	
	3	
	4	
	5	
	6	
	7	
	8	
	9	
	10	
CY2014 Q4	1	
	2	
	3	
	4	
	5	
	6	
	7	
	8	
	9	
	10	

Identify the Top 10 Admissions, Procedures and Services for CY2015 by Quarter:

CY2015 Q1	1	NonSurgical Treatment
	2	Vaginal delivery
	3	Csection
	4	Coronary Bypass Surgery (CABG)
	5	Vaginal hysterectomy
	6	
	7	
	8	
	9	
	10	
CY2015 Q2	1	Endoscopic Carpal Tunnel Release
	2	Abdominal Hysterectomy for Uterine Fibroids
	3	Tonsillectomy
	4	Vaginal delivery
	5	ACL Repair Only
	6	Physician Care New Patient
	7	
	8	
	9	
	10	

HPC Payer Exhibit 2

****All cells shaded in BLUE should be completed by carrier****

Actual Observed **Total Allowed Medical Expenditure** Trend by Year
Fully-insured and self-insured product lines

	Unit Cost	Utilization	Provider Mix	Service Mix	Total
CY 2012	11.8%	10.9%	0.0%	-4.8%	18.1%
CY 2013	7.4%	2.6%	0.0%	-4.3%	5.4%
CY 2014	4.1%	-27.7%	0.0%	-7.4%	-30.4%

Notes:

1. ACTUAL OBSERVED TOTAL ALLOWED MEDICAL EXPENDITURE TREND should reflect the best estimate of historical actual allowed trend for each year divided into components of unit cost, utilization, , service mix, and provider mix. These trends should not be adjusted for any changes in product, provider or demographic mix. In other words, these allowed trends should be actual observed trend. **These trends should reflect total medical expenditures which will include claims based and non claims based expenditures.**
2. PROVIDER MIX is defined as the impact on trend due to the changes in the mix of providers used. This item should not be included in utilization or cost trends.
3. SERVICE MIX is defined as the impact on trend due to the change in the types of services. This item should not be included in utilization or cost trends.
4. Trend in non-fee for service claims (actual or estimated) paid by the carrier to providers (including, but not limited to, items such as capitation, incentive pools, withholds, bonuses, management fees, infrastructure payments) should be reflected in Unit Cost trend as well as Total trend.

PLACE OF		Fin		Service			Claim					
SERV CODE	PLACE OF SERV DESC	Comp	MBR PRODUCT	Lag Product	Final Product	CNC Bucket	Month	Records	Count	Total Allowed	Total Paid	Total Billed
LC11	PROVIDERS OFFICE	1		Care	Care	Primary Care	201303	3	3	\$157.62	\$127.62	\$240.00
LC11	PROVIDERS OFFICE	1	CommCare	Care	Care	Primary Care	201406	492	260	\$18,289.72	\$17,079.72	\$37,739.60
LC11	PROVIDERS OFFICE	5		CommChoice	CommChoice	Primary Care	201310	6	2	\$303.53	\$268.01	\$662.00
LC22	OUTPATIENT HOSPITAL	5	CarePlus	CarePlus	CarePlus	Specialist	201410	2,365	1,758	\$132,246.32	\$132,090.19	\$688,699.24
LC11	PROVIDERS OFFICE	5	MA - MP - SHOP	Ambetter	Ambetter	Specialist	201405	7	5	\$523.47	\$283.53	\$1,153.00
LC24	AMBULATORY SURGICAL CENTER	5	CommCare	Care	Care	Specialist	201407	2	1	\$167.08	\$167.08	\$1,320.00
LC11	PROVIDERS OFFICE	5		Care	Care	Primary Care	201307	15	12	\$1,254.75	\$1,244.75	\$2,159.51
LC24	AMBULATORY SURGICAL CENTER	5	CommCare	Care	Care	Specialist	201308	23	20	\$9,263.77	\$9,177.77	\$41,696.00
LC11	PROVIDERS OFFICE	5	CommCare	Care	Care	Specialist	201301	4,765	2,902	\$360,067.35	\$336,106.74	\$974,325.76
LC50	FEDERALLY QUALIFIED HEALTH CENTER	5	CarePlus	CarePlus	CarePlus	Specialist	201406	25	22	\$2,066.37	\$2,066.37	\$3,419.00
LC22	OUTPATIENT HOSPITAL	5		Care	Care	Specialist	201310	1	1	\$6.53	\$6.53	\$30.00
LC11	PROVIDERS OFFICE	5		Care	Care	Specialist	201311	9	3	\$270.73	\$252.73	\$492.06
LC11	PROVIDERS OFFICE	1		Care	Care	Primary Care	201409	5	4	\$262.70	\$262.70	\$400.00
LC11	PROVIDERS OFFICE	5		CarePlus	CarePlus	Primary Care	201411	3	2	\$211.55	\$211.55	\$434.00
LC50	FEDERALLY QUALIFIED HEALTH CENTER	1	CommCare	Care	Care	Primary Care	201407	4	4	\$224.22	\$224.22	\$530.00
LC22	OUTPATIENT HOSPITAL	5	CommChoice	CommChoice	CommChoice	Specialist	201311	26	20	\$1,431.41	\$1,211.41	\$5,568.00
LC11	PROVIDERS OFFICE	1	CarePlus		CarePlus	Primary Care	201412	8	8	\$420.32	\$420.32	\$1,105.00
LC11	PROVIDERS OFFICE	1		Care	Care	Primary Care	201311	2	1	\$105.08	\$85.08	\$160.00
LC22	OUTPATIENT HOSPITAL	5	CommChoice	CommChoice	CommChoice	Specialist	201409	3	3	\$334.51	\$334.51	\$2,234.00
LC11	PROVIDERS OFFICE	5	CommCare	Care	Care	Primary Care	201409	1,794	1,040	\$122,147.67	\$115,551.02	\$244,945.41
LC22	OUTPATIENT HOSPITAL	1	CommCare	Care	Care	Primary Care	201312	12	10	\$752.04	\$672.04	\$1,405.00
LC22	OUTPATIENT HOSPITAL	5	CommCare	Care	Care	Specialist	201312	1,630	1,202	\$105,530.86	\$102,079.93	\$471,594.32
LC22	OUTPATIENT HOSPITAL	5	MA - MP - SHOP	Ambetter	Ambetter	Specialist	201405	2	2	\$191.05	\$191.05	\$332.00
LC24	AMBULATORY SURGICAL CENTER	5	CarePlus	CarePlus	CarePlus	Specialist	201407	42	22	\$4,293.80	\$4,293.80	\$29,840.14
LC22	OUTPATIENT HOSPITAL	1	CarePlus	CarePlus	CarePlus	Primary Care	201410	204	122	\$21,297.52	\$21,213.80	\$51,475.25
LC11	PROVIDERS OFFICE	1	CommCare	Care	Care	Primary Care	201407	503	273	\$19,665.10	\$18,460.10	\$40,468.24
LC11	PROVIDERS OFFICE	1		Care	Care	Primary Care	201402	1	1	\$68.49	\$58.49	\$80.00
LC24	AMBULATORY SURGICAL CENTER	5	CommCare	Care	Care	Specialist	201411	6	4	\$805.66	\$805.66	\$9,207.00
LC53	COMMUNITY MENTAL HEALTH CENTER	1	CarePlus		CarePlus	Primary Care	201410	2	2	\$112.54	\$112.54	\$135.00
LC22	OUTPATIENT HOSPITAL	1	CarePlus	CarePlus	CarePlus	Primary Care	201409	184	110	\$16,501.47	\$16,355.67	\$41,010.34
LC22	OUTPATIENT HOSPITAL	5	CommCare	Care	Care	Primary Care	201307	311	186	\$17,494.35	\$16,618.24	\$56,979.67
LC22	OUTPATIENT HOSPITAL	5	CommCare	Care	Care	Primary Care	201407	105	86	\$7,590.40	\$6,904.19	\$25,928.18
LC11	PROVIDERS OFFICE	1	CarePlus	Bridge	Bridge	Primary Care	201405	2	2	\$105.08	\$105.08	\$250.00
LC53	COMMUNITY MENTAL HEALTH CENTER	1	CarePlus	Bridge	Bridge	Primary Care	201410	3	3	\$190.08	\$190.08	\$255.00
LC11	PROVIDERS OFFICE	5	CommChoice	CommChoice	CommChoice	Specialist	201304	26	20	\$3,219.39	\$2,516.84	\$6,453.00
LC22	OUTPATIENT HOSPITAL	5	MA - MP - SHOP	Ambetter	Ambetter	Specialist	201410	2	1	\$41.67	\$41.67	\$110.00
LC22	OUTPATIENT HOSPITAL	5		CommChoice	CommChoice	Primary Care	201302	1	1	\$36.21	\$0.00	\$155.00
LC53	COMMUNITY MENTAL HEALTH CENTER	1	CarePlus	Bridge	Bridge	Primary Care	201409	1	1	\$52.54	\$52.54	\$85.00
LC11	PROVIDERS OFFICE	5		Care	Care	Primary Care	201405	3	3	\$451.84	\$441.84	\$486.00
LC22	OUTPATIENT HOSPITAL	1	CommCare		CommCare	Primary Care	201410	3	3	\$134.97	\$134.97	\$402.00
LC11	PROVIDERS OFFICE	1	CarePlus	CarePlus	CarePlus	Primary Care	201404	8,817	2,347	\$221,114.42	\$220,961.32	\$344,506.79
LC11	PROVIDERS OFFICE	5	CommChoice	CommChoice	CommChoice	Primary Care	201307	75	36	\$5,184.31	\$3,912.48	\$10,026.12
LC22	OUTPATIENT HOSPITAL	1	CarePlus		CarePlus	Primary Care	201409	43	41	\$2,007.62	\$2,007.62	\$6,579.00
LC11	PROVIDERS OFFICE	5	CommCare	Care	Care	Specialist	201307	2,795	1,671	\$197,950.87	\$184,812.08	\$536,855.85
LC22	OUTPATIENT HOSPITAL	5	CommChoice	CommChoice	CommChoice	Specialist	201408	9	6	\$839.51	\$794.51	\$2,980.02

LC11	PROVIDERS OFFICE	1	CommCare	CarePlus	CarePlus	Primary Care	201404	93	20	\$1,682.12	\$1,682.12	\$2,907.80
LC11	PROVIDERS OFFICE	5		Care	Care	Specialist	201404	2	1	\$109.03	\$22.16	\$330.00
LC11	PROVIDERS OFFICE	5	CommCare	Care	Care	Primary Care	201309	3,811	2,229	\$246,899.33	\$236,403.80	\$498,222.97
LC53	COMMUNITY MENTAL HEALTH CENTER	1	CarePlus	Care	Care	Primary Care	201404	7	7	\$1,172.54	\$1,172.54	\$1,195.00
LC50	FEDERALLY QUALIFIED HEALTH CENTER	5	CommCare	Care	Care	Specialist	201309	4	2	\$81.12	\$81.12	\$236.00
LC11	PROVIDERS OFFICE	1		Care	Care	Primary Care	201304	3	3	\$146.33	\$146.33	\$210.00
LC22	OUTPATIENT HOSPITAL	5	CommChoice	CommChoice	CommChoice	Primary Care	201306	4	4	\$437.99	\$296.57	\$1,240.00
LC22	OUTPATIENT HOSPITAL	5		Care	Care	Primary Care	201405	1	1	\$99.67	\$89.67	\$208.00
LC22	OUTPATIENT HOSPITAL	5	MA - MP - SHOP	Ambetter	Ambetter	Specialist	201404	3	3	\$831.20	\$831.20	\$2,010.00
LC50	FEDERALLY QUALIFIED HEALTH CENTER	5	MA - MP - SHOP	Ambetter	Ambetter	Primary Care	201406	1	1	\$6.87	\$6.87	\$24.00
LC11	PROVIDERS OFFICE	1	CarePlus	CarePlus	CarePlus	Primary Care	201411	3,803	1,094	\$73,491.41	\$73,380.37	\$117,466.31
LC22	OUTPATIENT HOSPITAL	5	CommChoice	CommChoice	CommChoice	Primary Care	201304	4	4	\$413.50	\$151.47	\$1,040.00
LC22	OUTPATIENT HOSPITAL	5	CommCare	Bridge	Bridge	Primary Care	201301	6	4	\$311.11	\$0.00	\$822.82
LC11	PROVIDERS OFFICE	5	MA - MP - SHOP	Ambetter	Ambetter	Specialist	201409	1	1	\$112.61	\$72.61	\$290.00
LC22	OUTPATIENT HOSPITAL	5	MA - MP - SHOP	Ambetter	Ambetter	Specialist	201407	2	1	\$103.79	\$0.00	\$449.00
LC22	OUTPATIENT HOSPITAL	5	CommCare	Care	Care	Primary Care	201308	286	175	\$15,605.80	\$14,862.80	\$62,724.61
LC11	PROVIDERS OFFICE	1	CommCare	Care	Care	Primary Care	201307	303	253	\$18,696.46	\$16,903.46	\$39,707.08
LC22	OUTPATIENT HOSPITAL	5		Care	Care	Primary Care	201409	1	1	\$101.68	\$91.68	\$200.00
LC22	OUTPATIENT HOSPITAL	5	CommChoice	CommChoice	CommChoice	Primary Care	201311	3	2	\$280.77	\$230.77	\$644.00
LC53	COMMUNITY MENTAL HEALTH CENTER	5	CarePlus	CarePlus	CarePlus	Primary Care	201412	2	2	\$78.14	\$78.14	\$240.00
LC22	OUTPATIENT HOSPITAL	1	CarePlus	CarePlus	CarePlus	Primary Care	201411	124	89	\$11,068.60	\$11,032.39	\$28,893.16
LC11	PROVIDERS OFFICE	5	CommCare	Care	Care	Primary Care	201303	4,499	3,034	\$342,561.33	\$329,491.39	\$692,950.35
LC11	PROVIDERS OFFICE	1	CommCare	CarePlus	CarePlus	Primary Care	201410	55	13	\$685.01	\$685.01	\$1,330.65
LC22	OUTPATIENT HOSPITAL	5	CommChoice	CommChoice	CommChoice	Specialist	201310	29	26	\$2,980.92	\$2,545.46	\$9,827.00
LC11	PROVIDERS OFFICE	5	MA - MP - SHOP	Ambetter	Ambetter	Primary Care	201408	1	1	\$126.06	\$106.06	\$200.00
LC53	COMMUNITY MENTAL HEALTH CENTER	1	CarePlus	Care	Care	Primary Care	201410	5	5	\$277.62	\$277.62	\$345.00
LC11	PROVIDERS OFFICE	1		CommChoice	CommChoice	Primary Care	201312	3	3	\$157.62	\$55.08	\$405.00
LC11	PROVIDERS OFFICE	1	CarePlus		CarePlus	Primary Care	201404	1	1	\$80.80	\$15.57	\$165.00
LC22	OUTPATIENT HOSPITAL	5	CarePlus	CarePlus	CarePlus	Primary Care	201406	392	363	\$22,144.46	\$21,941.09	\$81,436.34
LC53	COMMUNITY MENTAL HEALTH CENTER	1	CarePlus	CarePlus	CarePlus	Primary Care	201408	71	69	\$7,031.57	\$7,031.57	\$10,855.00
LC50	FEDERALLY QUALIFIED HEALTH CENTER	5	CommCare	Care	Care	Specialist	201408	5	4	\$307.26	\$289.26	\$423.00
LC22	OUTPATIENT HOSPITAL	5		CarePlus	CarePlus	Specialist	201412	1	1	\$26.98	\$26.98	\$121.00
LC11	PROVIDERS OFFICE	5	CommChoice	CommChoice	CommChoice	Primary Care	201412	2	1	\$16.45	\$8.00	\$50.00
LC11	PROVIDERS OFFICE	1	CarePlus		CarePlus	Primary Care	201411	3,009	703	\$48,347.20	\$48,251.52	\$80,028.51
LC11	PROVIDERS OFFICE	1	CommCare	Bridge	Bridge	Primary Care	201307	2	2	\$159.84	\$159.84	\$290.00
LC22	OUTPATIENT HOSPITAL	5	CommChoice	CommChoice	CommChoice	Primary Care	201405	3	1	\$129.59	\$99.59	\$238.02
LC11	PROVIDERS OFFICE	1	CommBridge	Bridge	Bridge	Primary Care	201407	2	2	\$107.18	\$107.18	\$500.00
LC22	OUTPATIENT HOSPITAL	5		Care	Care	Specialist	201302	1	1	\$13.84	\$13.84	\$39.00
LC22	OUTPATIENT HOSPITAL	5		CommChoice	CommChoice	Specialist	201405	1	1	\$1,081.19	\$1,081.19	\$2,311.00
LC22	OUTPATIENT HOSPITAL	1	CommCare		CommCare	Primary Care	201409	5	5	\$210.02	\$200.02	\$694.00
LC22	OUTPATIENT HOSPITAL	5	CommCare	Care	Care	Specialist	201412	810	597	\$50,047.84	\$48,362.77	\$246,680.62
LC11	PROVIDERS OFFICE	1		CommChoice	CommChoice	Primary Care	201301	5	5	\$262.70	\$0.00	\$800.00
LC11	PROVIDERS OFFICE	5	CarePlus	Care	Care	Specialist	201403	6	3	\$536.04	\$518.04	\$2,020.00
LC11	PROVIDERS OFFICE	5	CommChoice	CommChoice	CommChoice	Specialist	201409	1	1	\$145.72	\$0.00	\$185.00
LC11	PROVIDERS OFFICE	1	CarePlus	Care	Care	Primary Care	201406	72	20	\$1,089.97	\$1,089.97	\$2,060.70
LC11	PROVIDERS OFFICE	5	MA - MP - SHOP	Ambetter	Ambetter	Primary Care	201408	4	4	\$519.47	\$449.47	\$1,020.00
LC22	OUTPATIENT HOSPITAL	5	CarePlus	CarePlus	CarePlus	Specialist	201409	2,060	1,589	\$119,620.99	\$119,351.33	\$569,952.42
LC11	PROVIDERS OFFICE	5	CommChoice	CommChoice	CommChoice	Primary Care	201306	60	40	\$5,481.44	\$4,236.83	\$11,054.10
LC22	OUTPATIENT HOSPITAL	1	CommCare	Care	Care	Primary Care	201411	26	23	\$1,480.83	\$1,440.83	\$5,426.32
LC53	COMMUNITY MENTAL HEALTH CENTER	1		CarePlus	CarePlus	Primary Care	201412	2	2	\$40.40	\$40.40	\$80.00
LC22	OUTPATIENT HOSPITAL	5	CarePlus	CarePlus	CarePlus	Specialist	201403	2,756	2,149	\$152,948.05	\$151,496.32	\$729,282.66

LC22	OUTPATIENT HOSPITAL	1	CarePlus	Bridge	Bridge	Primary Care	201404	5	5	\$121.67	\$121.67	\$485.00
LC11	PROVIDERS OFFICE	5	CommCare	Care	Care	Specialist	201408	928	583	\$67,251.68	\$60,002.27	\$177,442.79
LC24	AMBULATORY SURGICAL CENTER	5	CommCare	Care	Care	Specialist	201302	40	28	\$15,032.96	\$14,956.96	\$72,456.00
LC11	PROVIDERS OFFICE	5	CarePlus	CarePlus	CarePlus	Specialist	201411	2,334	1,476	\$129,442.80	\$129,054.18	\$391,614.57
LC11	PROVIDERS OFFICE	1	Care	Care	Care	Primary Care	201310	2	2	\$105.08	\$85.00	\$160.00
LC11	PROVIDERS OFFICE	5	CommChoice	CommChoice	CommChoice	Specialist	201410	2	2	\$327.43	\$0.00	\$519.00
LC11	PROVIDERS OFFICE	1	CommCare	CarePlus	CarePlus	Primary Care	201405	94	16	\$1,146.72	\$1,146.72	\$1,842.00
LC22	OUTPATIENT HOSPITAL	1	CarePlus	CarePlus	CarePlus	Primary Care	201402	190	153	\$13,003.12	\$12,856.45	\$38,237.07
LC11	PROVIDERS OFFICE	5	CommCare	Care	Care	Primary Care	201410	2,071	1,101	\$126,514.41	\$119,481.16	\$255,600.77
LC11	PROVIDERS OFFICE	1	CommBridge	Care	Care	Primary Care	201402	3	3	\$218.04	\$218.04	\$471.00
LC50	FEDERALLY QUALIFIED HEALTH CENTER	5	CommCare	Care	Care	Primary Care	201404	14	9	\$1,184.31	\$1,164.31	\$1,587.00
LC22	OUTPATIENT HOSPITAL	5	MA - MP - SHOP	Ambetter	Ambetter	Primary Care	201403	2	1	\$211.20	\$211.20	\$440.00
LC11	PROVIDERS OFFICE	5	CarePlus	CarePlus	CarePlus	Primary Care	201403	11	6	\$802.29	\$802.29	\$1,329.00
LC11	PROVIDERS OFFICE	5	CarePlus	Care	Care	Primary Care	201403	2	2	\$219.02	\$209.02	\$653.00
LC22	OUTPATIENT HOSPITAL	5	CarePlus	CarePlus	CarePlus	Primary Care	201412	330	308	\$21,147.20	\$21,068.02	\$74,386.57
LC24	AMBULATORY SURGICAL CENTER	5	CommCare	Care	Care	Specialist	201402	16	12	\$4,065.21	\$3,939.21	\$18,571.52
LC11	PROVIDERS OFFICE	5	CarePlus	CarePlus	CarePlus	Primary Care	201410	2	2	\$220.11	\$220.11	\$353.00
LC22	OUTPATIENT HOSPITAL	5	CommChoice	CommChoice	CommChoice	Specialist	201309	18	12	\$1,735.82	\$1,525.55	\$4,772.00
LC22	OUTPATIENT HOSPITAL	5	Care	Care	Care	Specialist	201311	6	2	\$748.60	\$748.60	\$5,882.82
LC50	FEDERALLY QUALIFIED HEALTH CENTER	5	CarePlus	CarePlus	CarePlus	Primary Care	201408	146	115	\$18,792.98	\$18,792.98	\$26,591.00
LC11	PROVIDERS OFFICE	1	CarePlus	CarePlus	CarePlus	Primary Care	201405	8,451	2,440	\$201,556.64	\$201,470.75	\$312,264.25
LC11	PROVIDERS OFFICE	1	CommBridge	Care	Care	Primary Care	201410	4	4	\$210.16	\$170.16	\$500.00
LC11	PROVIDERS OFFICE	1	CarePlus	Bridge	Bridge	Primary Care	201409	1	1	\$52.54	\$52.54	\$125.00
LC11	PROVIDERS OFFICE	5	CarePlus	Care	Care	Primary Care	201411	6	1	\$223.78	\$223.78	\$349.00
LC50	FEDERALLY QUALIFIED HEALTH CENTER	5	CarePlus	CarePlus	CarePlus	Primary Care	201409	178	131	\$23,307.39	\$23,307.39	\$32,916.48
LC22	OUTPATIENT HOSPITAL	5	CommChoice	CommChoice	CommChoice	Specialist	201302	1	1	\$69.50	\$0.00	\$250.00
LC50	FEDERALLY QUALIFIED HEALTH CENTER	5	CarePlus	CarePlus	CarePlus	Primary Care	201402	105	92	\$20,093.76	\$20,093.76	\$31,910.72
LC11	PROVIDERS OFFICE	5	MA - MP - SHOP	Ambetter	Ambetter	Primary Care	201406	1	1	\$75.63	\$0.00	\$224.00
LC11	PROVIDERS OFFICE	5	CommCare	Care	Care	Primary Care	201311	3,640	2,193	\$242,599.34	\$231,335.40	\$485,930.95
LC50	FEDERALLY QUALIFIED HEALTH CENTER	5	CommCare	Care	Care	Primary Care	201306	34	27	\$3,492.06	\$3,437.06	\$4,556.30
LC11	PROVIDERS OFFICE	1	Care	Care	Care	Primary Care	201312	3	3	\$157.62	\$127.62	\$240.00
LC11	PROVIDERS OFFICE	5	CommChoice	CommChoice	CommChoice	Specialist	201305	26	22	\$3,068.22	\$2,090.79	\$7,859.00
LC11	PROVIDERS OFFICE	5	MA - MP - SHOP	Ambetter	Ambetter	Primary Care	201409	3	3	\$302.53	\$119.23	\$825.00
LC11	PROVIDERS OFFICE	5	CommChoice	CommChoice	CommChoice	Specialist	201311	33	21	\$5,419.70	\$4,556.05	\$11,269.00
LC22	OUTPATIENT HOSPITAL	5	CommChoice	CommChoice	CommChoice	Specialist	201304	20	15	\$2,821.65	\$2,704.09	\$7,463.00
LC11	PROVIDERS OFFICE	5	MA - MP - SHOP	Ambetter	Ambetter	Primary Care	201411	2	2	\$131.47	\$112.47	\$265.00
LC11	PROVIDERS OFFICE	1	CommCare	CarePlus	CarePlus	Primary Care	201406	75	13	\$863.95	\$863.95	\$1,398.75
LC50	FEDERALLY QUALIFIED HEALTH CENTER	5	CommCare	Care	Care	Specialist	201409	1	1	\$138.78	\$120.78	\$165.00
LC50	FEDERALLY QUALIFIED HEALTH CENTER	5	CommCare	Care	Care	Specialist	201302	12	8	\$1,088.30	\$1,070.30	\$1,389.00
LC24	AMBULATORY SURGICAL CENTER	5	CommCare	Care	Care	Specialist	201404	19	15	\$7,321.03	\$7,106.03	\$30,278.50
LC11	PROVIDERS OFFICE	5	MA - MP - SHOP	Ambetter	Ambetter	Specialist	201407	11	8	\$916.04	\$301.14	\$2,266.00
LC22	OUTPATIENT HOSPITAL	5	CommBridge	Bridge	Bridge	Specialist	201301	1	1	\$30.40	\$0.00	\$76.80
LC50	FEDERALLY QUALIFIED HEALTH CENTER	1	CarePlus	CarePlus	CarePlus	Primary Care	201407	31	31	\$1,609.16	\$1,609.16	\$3,650.00
LC11	PROVIDERS OFFICE	5	MA - MP - SHOP	Ambetter	Ambetter	Primary Care	201405	1	1	\$46.19	\$21.19	\$150.00
LC11	PROVIDERS OFFICE	5	CommCare	Care	Care	Specialist	201308	2,727	1,703	\$200,982.07	\$187,603.89	\$558,439.90
LC11	PROVIDERS OFFICE	5	Care	Care	Care	Primary Care	201306	10	9	\$1,083.84	\$1,043.84	\$2,072.00
LC22	OUTPATIENT HOSPITAL	1	CarePlus	CarePlus	CarePlus	Primary Care	201410	50	50	\$2,600.02	\$2,600.02	\$8,394.00
LC11	PROVIDERS OFFICE	5	MA - MP - SHOP	Ambetter	Ambetter	Primary Care	201404	2	1	\$72.40	\$0.00	\$181.00
LC11	PROVIDERS OFFICE	1	CommCare	Care	Care	Primary Care	201301	478	375	\$30,715.15	\$29,090.56	\$62,155.63
LC11	PROVIDERS OFFICE	1	CommCare	CarePlus	CarePlus	Primary Care	201411	27	7	\$275.67	\$275.67	\$433.35
LC22	OUTPATIENT HOSPITAL	1	CommChoice	CommChoice	CommChoice	Primary Care	201301	1	1	\$116.95	\$93.04	\$170.00

LC11	PROVIDERS OFFICE	1	CarePlus	CarePlus	CarePlus	Primary Care	201412	7,168	2,002	\$129,804.03	\$129,696.49	\$212,158.43
LC24	AMBULATORY SURGICAL CENTER	5	CarePlus	CarePlus	CarePlus	Specialist	201406	37	22	\$4,125.99	\$4,125.99	\$30,076.08
LC22	OUTPATIENT HOSPITAL	5	CommCare	Care	Care	Specialist	201301	3,097	2,395	\$247,134.08	\$236,644.43	\$938,017.32
LC11	PROVIDERS OFFICE	5		CommChoice	CommChoice	Specialist	201307	1	1	\$275.67	\$230.67	\$509.00
LC50	FEDERALLY QUALIFIED HEALTH CENTER	1	CommCare	Care	Care	Primary Care	201408	7	7	\$477.56	\$477.56	\$830.00
LC11	PROVIDERS OFFICE	5	CommChoice	CommChoice	CommChoice	Primary Care	201405	26	12	\$2,214.74	\$1,673.95	\$4,359.90
LC11	PROVIDERS OFFICE	1	CommCare	CarePlus	CarePlus	Primary Care	201412	41	7	\$418.61	\$418.61	\$658.05
LC24	AMBULATORY SURGICAL CENTER	5	CommCare	Care	Care	Specialist	201410	7	5	\$808.24	\$808.24	\$3,957.02
LC22	OUTPATIENT HOSPITAL	1		CommChoice	CommChoice	Primary Care	201306	2	2	\$107.62	\$62.62	\$200.00
LC50	FEDERALLY QUALIFIED HEALTH CENTER	5		Care	Care	Primary Care	201308	1	1	\$119.27	\$119.27	\$193.00
LC22	OUTPATIENT HOSPITAL	5	CommCare	Care	Care	Primary Care	201402	122	80	\$5,332.98	\$4,810.30	\$18,731.00
LC22	OUTPATIENT HOSPITAL	5	CommChoice	CommChoice	CommChoice	Specialist	201303	39	30	\$6,005.82	\$5,715.88	\$19,301.00
LC53	COMMUNITY MENTAL HEALTH CENTER	1	CommCare	Care	Care	Primary Care	201307	1	1	\$52.54	\$42.54	\$164.00
LC22	OUTPATIENT HOSPITAL	1	CarePlus	CarePlus	CarePlus	Primary Care	201404	239	172	\$22,499.57	\$22,447.29	\$55,133.05
LC24	AMBULATORY SURGICAL CENTER	5	CommCare	Care	Care	Specialist	201408	3	3	\$574.52	\$574.52	\$2,355.00
LC50	FEDERALLY QUALIFIED HEALTH CENTER	5	CommCare	Care	Care	Primary Care	201411	19	13	\$1,893.30	\$1,788.30	\$2,316.00
LC11	PROVIDERS OFFICE	1	CommCare	Care	Care	Primary Care	201401	360	243	\$18,897.41	\$17,619.39	\$37,807.07
LC22	OUTPATIENT HOSPITAL	1	CommCare	Care	Care	Primary Care	201404	18	16	\$1,078.63	\$1,023.63	\$4,981.06
LC11	PROVIDERS OFFICE	1	CommBridge	Care	Care	Primary Care	201409	4	4	\$210.16	\$170.16	\$500.00
LC11	PROVIDERS OFFICE	1	CommCare		CommCare	Primary Care	201411	193	80	\$5,134.14	\$4,829.14	\$10,758.12
LC11	PROVIDERS OFFICE	5		CarePlus	CarePlus	Specialist	201401	2	1	\$147.18	\$147.18	\$203.00
LC22	OUTPATIENT HOSPITAL	5	CarePlus	CarePlus	CarePlus	Specialist	201412	2,082	1,594	\$117,929.39	\$117,549.15	\$620,439.89
LC22	OUTPATIENT HOSPITAL	5	CommCare	Care	Care	Specialist	201306	2,501	1,877	\$186,639.87	\$183,352.27	\$684,465.32
LC11	PROVIDERS OFFICE	1		CommChoice	CommChoice	Primary Care	201307	9	9	\$520.13	\$247.06	\$1,370.00
LC22	OUTPATIENT HOSPITAL	1	CommCare	Care	Care	Primary Care	201305	41	36	\$4,151.76	\$4,061.29	\$8,620.02
LC11	PROVIDERS OFFICE	1		Care	Care	Primary Care	201404	3	2	\$146.33	\$116.33	\$428.00
LC22	OUTPATIENT HOSPITAL	5	CarePlus	CarePlus	CarePlus	Specialist	201405	2,490	1,910	\$145,055.83	\$144,071.50	\$677,485.86
LC11	PROVIDERS OFFICE	5	MA - MP - SHOP	Ambetter	Ambetter	Primary Care	201402	1	1	\$147.51	\$122.51	\$225.00
LC22	OUTPATIENT HOSPITAL	5	CommChoice	CommChoice	CommChoice	Primary Care	201404	1	1	\$129.59	\$0.00	\$229.00
LC50	FEDERALLY QUALIFIED HEALTH CENTER	1	CarePlus	CarePlus	CarePlus	Primary Care	201404	24	24	\$1,262.67	\$1,262.67	\$3,315.00
LC11	PROVIDERS OFFICE	1	CommCare	Care	Care	Primary Care	201308	252	208	\$15,523.20	\$13,775.66	\$31,600.54
LC22	OUTPATIENT HOSPITAL	5		Care	Care	Specialist	201303	7	5	\$998.41	\$980.41	\$3,821.00
LC11	PROVIDERS OFFICE	5	CommCare	Care	Care	Specialist	201305	4,155	2,596	\$360,254.89	\$338,265.49	\$1,040,877.45
LC22	OUTPATIENT HOSPITAL	1	CommBridge	Bridge	Bridge	Primary Care	201406	1	1	\$76.08	\$76.08	\$215.00
LC53	COMMUNITY MENTAL HEALTH CENTER	1	CommCare	Care	Care	Primary Care	201406	5	5	\$270.16	\$270.16	\$390.00
LC11	PROVIDERS OFFICE	5	CarePlus	Care	Care	Specialist	201401	1	1	\$136.64	\$136.64	\$525.00
LC50	FEDERALLY QUALIFIED HEALTH CENTER	5	CommCare	Care	Care	Primary Care	201312	34	24	\$3,067.48	\$3,022.48	\$4,842.21
LC53	COMMUNITY MENTAL HEALTH CENTER	1	CommCare	CarePlus	CarePlus	Primary Care	201410	1	1	\$60.00	\$60.00	\$60.00
LC53	COMMUNITY MENTAL HEALTH CENTER	1	CarePlus	CarePlus	CarePlus	Primary Care	201403	108	103	\$8,484.95	\$8,484.95	\$14,916.50
LC11	PROVIDERS OFFICE	5		Care	Care	Specialist	201409	3	2	\$185.27	\$108.35	\$437.01
LC24	AMBULATORY SURGICAL CENTER	5	CommCare	Care	Care	Specialist	201311	14	11	\$4,302.42	\$4,284.42	\$21,140.50
LC50	FEDERALLY QUALIFIED HEALTH CENTER	5	CommCare	Care	Care	Primary Care	201412	31	12	\$1,741.27	\$1,696.27	\$2,261.01
LC11	PROVIDERS OFFICE	5	MA - MP - SHOP	Ambetter	Ambetter	Primary Care	201409	1	1	\$168.74	\$148.74	\$250.00
LC53	COMMUNITY MENTAL HEALTH CENTER	5	CarePlus	CarePlus	CarePlus	Specialist	201409	1	1	\$47.36	\$47.36	\$150.00
LC11	PROVIDERS OFFICE	5	MA - MP - SHOP	Ambetter	Ambetter	Specialist	201412	2	1	\$106.35	\$56.35	\$275.58
LC22	OUTPATIENT HOSPITAL	5	CommCare	Care	Care	Primary Care	201302	409	319	\$27,551.68	\$25,962.41	\$91,282.87
LC11	PROVIDERS OFFICE	5		Care	Care	Specialist	201307	6	4	\$477.60	\$449.60	\$1,013.24
LC11	PROVIDERS OFFICE	5	CarePlus	Care	Care	Primary Care	201402	5	4	\$252.43	\$217.43	\$869.00
LC11	PROVIDERS OFFICE	5	MA - MP - SHOP	Ambetter	Ambetter	Specialist	201405	4	3	\$474.37	\$354.37	\$792.00
LC22	OUTPATIENT HOSPITAL	1	CommBridge	Bridge	Bridge	Primary Care	201412	1	1	\$76.08	\$76.08	\$306.00
LC11	PROVIDERS OFFICE	5	CommCare	Care	Care	Primary Care	201310	4,806	2,693	\$294,615.39	\$281,427.31	\$605,418.04

LC22	OUTPATIENT HOSPITAL	5	MA - MP - SHOF	Ambetter	Ambetter	Specialist	201407	3	3	\$627.60	\$0.00	\$1,742.00
LC11	PROVIDERS OFFICE	5		CommChoice	CommChoice	Primary Care	201311	1	1	\$128.10	\$0.00	\$250.00
LC11	PROVIDERS OFFICE	5	CommCare	Care	Care	Specialist	201309	2,745	1,739	\$207,097.58	\$191,022.60	\$563,227.23
LC22	OUTPATIENT HOSPITAL	5	CarePlus	CarePlus	CarePlus	Primary Care	201405	443	420	\$25,312.76	\$25,052.06	\$94,060.34
LC11	PROVIDERS OFFICE	5	CommCare	Care	Care	Specialist	201401	1,534	907	\$112,020.03	\$101,385.63	\$294,556.60
LC11	PROVIDERS OFFICE	5	MA - MP - SHOF	Ambetter	Ambetter	Specialist	201407	2	2	\$412.76	\$332.76	\$997.00
LC22	OUTPATIENT HOSPITAL	5		Care	Care	Specialist	201403	2	2	\$62.16	\$43.84	\$162.00
LC11	PROVIDERS OFFICE	1	CommCare	Care	Care	Primary Care	201310	328	256	\$19,505.20	\$17,156.62	\$40,160.78
LC50	FEDERALLY QUALIFIED HEALTH CENTER	1	CarePlus	CarePlus	CarePlus	Primary Care	201406	22	22	\$1,216.08	\$1,216.08	\$3,180.00
LC22	OUTPATIENT HOSPITAL	5	CommCare	Care	Care	Primary Care	201401	140	93	\$6,607.48	\$5,907.89	\$26,863.46
LC50	FEDERALLY QUALIFIED HEALTH CENTER	5	CarePlus	CarePlus	CarePlus	Specialist	201401	92	70	\$7,257.21	\$7,257.21	\$10,389.46
LC11	PROVIDERS OFFICE	1	CommChoice	CommChoice	CommChoice	Primary Care	201311	1	1	\$51.58	\$51.58	\$250.00
LC11	PROVIDERS OFFICE	5	CarePlus	CarePlus	CarePlus	Primary Care	201410	4,855	2,624	\$299,850.54	\$298,991.01	\$577,761.88
LC11	PROVIDERS OFFICE	1	CommBridge	Care	Care	Primary Care	201408	3	2	\$157.62	\$127.62	\$375.00
LC50	FEDERALLY QUALIFIED HEALTH CENTER	5	CarePlus	CarePlus	CarePlus	Primary Care	201411	154	102	\$21,123.14	\$21,123.14	\$31,311.87
LC11	PROVIDERS OFFICE	1		CommChoice	CommChoice	Primary Care	201308	8	8	\$757.09	\$489.70	\$1,507.00
LC53	COMMUNITY MENTAL HEALTH CENTER	1	CommCare	Care	Care	Primary Care	201411	2	2	\$137.54	\$137.54	\$170.00
LC22	OUTPATIENT HOSPITAL	1	CommCare	Care	Care	Primary Care	201306	24	22	\$2,638.79	\$2,579.01	\$5,704.50
LC50	FEDERALLY QUALIFIED HEALTH CENTER	5	CommChoice	CommChoice	CommChoice	Specialist	201302	2	1	\$40.56	\$40.56	\$118.00
LC11	PROVIDERS OFFICE	1	CommCare	Bridge	Bridge	Primary Care	201302	2	2	\$157.20	\$159.40	\$400.00
LC11	PROVIDERS OFFICE	5	CarePlus	CarePlus	CarePlus	Specialist	201405	3,071	2,084	\$183,826.94	\$182,829.48	\$538,151.64
LC53	COMMUNITY MENTAL HEALTH CENTER	1	CommCare	Care	Care	Primary Care	201306	2	2	\$105.08	\$105.08	\$294.00
LC53	COMMUNITY MENTAL HEALTH CENTER	1	CarePlus	Bridge	Bridge	Primary Care	201411	3	3	\$238.50	\$238.50	\$285.00
LC53	COMMUNITY MENTAL HEALTH CENTER	5	CarePlus	CarePlus	CarePlus	Specialist	201412	2	2	\$78.02	\$78.02	\$220.00
LC11	PROVIDERS OFFICE	5	CarePlus	CarePlus	CarePlus	Primary Care	201407	3,752	2,436	\$283,842.35	\$282,642.66	\$524,987.16
LC22	OUTPATIENT HOSPITAL	5		Care	Care	Specialist	201304	4	4	\$272.64	\$272.64	\$718.00
LC22	OUTPATIENT HOSPITAL	5	CommCare	Care	Care	Specialist	201407	840	627	\$52,498.95	\$50,474.30	\$225,937.11
LC11	PROVIDERS OFFICE	5	CommChoice	CommChoice	CommChoice	Specialist	201401	28	18	\$2,640.63	\$1,548.69	\$5,163.00
LC53	COMMUNITY MENTAL HEALTH CENTER	1	CarePlus	CarePlus	CarePlus	Primary Care	201411	8	8	\$720.01	\$720.01	\$1,665.00
LC11	PROVIDERS OFFICE	5	CommChoice	CommChoice	CommChoice	Primary Care	201301	43	24	\$3,595.27	\$2,795.14	\$6,713.11
LC22	OUTPATIENT HOSPITAL	1	CarePlus	CarePlus	CarePlus	Primary Care	201405	222	171	\$22,384.13	\$22,309.97	\$55,128.61
LC22	OUTPATIENT HOSPITAL	1	CommCare	Care	Care	Primary Care	201412	36	28	\$2,044.02	\$2,019.02	\$7,643.45
LC11	PROVIDERS OFFICE	1		CommChoice	CommChoice	Primary Care	201311	6	5	\$315.24	\$100.16	\$815.00
LC22	OUTPATIENT HOSPITAL	5	CommCare	Care	Care	Primary Care	201412	95	80	\$6,538.76	\$6,013.76	\$18,383.18
LC11	PROVIDERS OFFICE	1	CarePlus	Care	Care	Primary Care	201401	39	15	\$1,093.50	\$1,093.50	\$1,979.94
LC11	PROVIDERS OFFICE	1	CarePlus	Bridge	Bridge	Primary Care	201401	1	1	\$99.81	\$99.81	\$160.00
LC50	FEDERALLY QUALIFIED HEALTH CENTER	5	CarePlus	CarePlus	CarePlus	Specialist	201407	32	27	\$2,464.92	\$2,464.92	\$4,169.70
LC11	PROVIDERS OFFICE	1	CommCare	Care	Care	Primary Care	201409	461	225	\$16,720.43	\$15,620.43	\$34,442.14
LC11	PROVIDERS OFFICE	5	CommCare	Care	Care	Primary Care	201402	1,647	1,106	\$127,047.78	\$119,651.24	\$241,482.68
LC53	COMMUNITY MENTAL HEALTH CENTER	1	CarePlus	CarePlus	CarePlus	Primary Care	201411	58	57	\$6,086.02	\$6,086.02	\$8,703.00
LC22	OUTPATIENT HOSPITAL	1	CommCare	Care	Care	Primary Care	201308	3	3	\$365.15	\$365.15	\$719.00
LC24	AMBULATORY SURGICAL CENTER	5	CarePlus	CarePlus	CarePlus	Specialist	201402	39	25	\$5,105.42	\$5,125.95	\$29,355.12
LC50	FEDERALLY QUALIFIED HEALTH CENTER	5	CommCare	Care	Care	Primary Care	201308	33	28	\$3,679.22	\$3,624.22	\$4,943.00
LC53	COMMUNITY MENTAL HEALTH CENTER	5	CarePlus	CarePlus	CarePlus	Primary Care	201409	3	2	\$97.77	\$97.77	\$270.00
LC22	OUTPATIENT HOSPITAL	5	CarePlus	Care	Care	Specialist	201408	1	1	\$226.97	\$226.97	\$798.00
LC22	OUTPATIENT HOSPITAL	1		CommChoice	CommChoice	Primary Care	201401	1	1	\$53.81	\$28.81	\$224.00
LC22	OUTPATIENT HOSPITAL	5		CarePlus	CarePlus	Specialist	201401	1	1	\$92.94	\$92.94	\$291.00
LC22	OUTPATIENT HOSPITAL	5	CommCare	Care	Care	Primary Care	201304	472	356	\$32,788.96	\$30,785.60	\$106,719.93
LC11	PROVIDERS OFFICE	5	CarePlus	Care	Care	Primary Care	201409	1	1	\$73.32	\$73.32	\$151.00
LC22	OUTPATIENT HOSPITAL	5	CarePlus	CarePlus	CarePlus	Primary Care	201407	270	255	\$14,158.33	\$14,017.55	\$50,307.71
LC22	OUTPATIENT HOSPITAL	5	CommChoice	CommChoice	CommChoice	Specialist	201402	13	11	\$1,110.78	\$936.41	\$3,054.00

LC22	OUTPATIENT HOSPITAL	5	CommCare	Care	Care	Specialist	201402	837	631	\$50,038.83	\$48,523.28	\$208,797.05
LC11	PROVIDERS OFFICE	5	CommChoice	CommChoice	CommChoice	Specialist	201312	23	18	\$3,230.48	\$1,893.66	\$5,429.00
LC22	OUTPATIENT HOSPITAL	1	CarePlus	CarePlus	CarePlus	Primary Care	201403	298	212	\$22,979.63	\$22,864.90	\$59,963.22
LC53	COMMUNITY MENTAL HEALTH CENTER	1	CarePlus	Bridge	Bridge	Primary Care	201406	1	1	\$52.54	\$52.54	\$85.00
LC11	PROVIDERS OFFICE	5	CommCare	Care	Care	Primary Care	201305	4,224	2,858	\$327,074.03	\$314,394.56	\$651,687.01
LC50	FEDERALLY QUALIFIED HEALTH CENTER	5	CarePlus	CarePlus	CarePlus	Specialist	201409	10	10	\$906.96	\$906.96	\$1,265.00
LC22	OUTPATIENT HOSPITAL	5		CommChoice	CommChoice	Specialist	201307	2	2	\$231.74	\$206.74	\$492.00
LC22	OUTPATIENT HOSPITAL	5		CarePlus	CarePlus	Specialist	201408	5	3	\$152.45	\$152.45	\$1,104.02
LC11	PROVIDERS OFFICE	5	CommCare	Care	Care	Primary Care	201408	1,356	849	\$101,687.23	\$95,726.17	\$198,071.84
LC11	PROVIDERS OFFICE	5	CommChoice	CommChoice	CommChoice	Primary Care	201406	12	7	\$1,080.05	\$931.01	\$1,999.00
LC11	PROVIDERS OFFICE	1	CommCare	Bridge	Bridge	Primary Care	201301	2	2	\$197.22	\$210.80	\$300.00
LC22	OUTPATIENT HOSPITAL	1	CommCare		CommCare	Primary Care	201411	4	4	\$179.96	\$179.96	\$551.63
LC22	OUTPATIENT HOSPITAL	1		Care	Care	Primary Care	201411	1	1	\$44.99	\$44.99	\$134.00
LC22	OUTPATIENT HOSPITAL	1	CommChoice	CommChoice	CommChoice	Primary Care	201310	1	1	\$53.81	\$24.93	\$100.00
LC50	FEDERALLY QUALIFIED HEALTH CENTER	1	CommCare	Care	Care	Primary Care	201410	6	6	\$376.45	\$376.45	\$570.00
LC53	COMMUNITY MENTAL HEALTH CENTER	1	CommCare	Care	Care	Primary Care	201407	8	8	\$477.47	\$477.47	\$670.00
LC22	OUTPATIENT HOSPITAL	5		CommChoice	CommChoice	Primary Care	201309	2	2	\$201.93	\$161.93	\$558.00
LC11	PROVIDERS OFFICE	1		Care	Care	Primary Care	201405	4	4	\$210.16	\$210.16	\$320.00
LC11	PROVIDERS OFFICE	5	CommChoice	CommChoice	CommChoice	Primary Care	201303	77	39	\$6,409.58	\$4,805.11	\$11,308.92
LC11	PROVIDERS OFFICE	5	CommChoice	CommChoice	CommChoice	Specialist	201405	13	7	\$1,316.35	\$1,081.45	\$2,869.00
LC22	OUTPATIENT HOSPITAL	1	CommBridge	Bridge	Bridge	Primary Care	201301	3	2	\$436.67	\$461.10	\$663.00
LC11	PROVIDERS OFFICE	5	MA - MP - SHOP	Ambetter	Ambetter	Primary Care	201410	8	4	\$516.76	\$373.62	\$1,090.00
LC11	PROVIDERS OFFICE	1		CommChoice	CommChoice	Primary Care	201401	2	2	\$105.08	\$55.08	\$270.00
LC50	FEDERALLY QUALIFIED HEALTH CENTER	1	CommCare	Care	Care	Primary Care	201409	8	8	\$428.50	\$428.50	\$575.00
LC22	OUTPATIENT HOSPITAL	1		CommChoice	CommChoice	Primary Care	201307	1	1	\$83.00	\$58.00	\$150.00
LC22	OUTPATIENT HOSPITAL	5		CommChoice	CommChoice	Specialist	201306	8	3	\$763.32	\$763.32	\$3,007.00
LC11	PROVIDERS OFFICE	5	CommCare	Care	Care	Specialist	201310	3,237	1,913	\$227,682.38	\$210,796.73	\$607,800.03
LC53	COMMUNITY MENTAL HEALTH CENTER	1	CarePlus	CarePlus	CarePlus	Primary Care	201410	109	95	\$13,022.28	\$13,022.28	\$17,635.00
LC11	PROVIDERS OFFICE	5		Care	Care	Specialist	201403	2	1	\$145.86	\$29.65	\$441.00
LC11	PROVIDERS OFFICE	1		Care	Care	Primary Care	201410	4	4	\$210.16	\$210.16	\$320.00
LC11	PROVIDERS OFFICE	1		CommChoice	CommChoice	Primary Care	201309	12	12	\$630.48	\$207.46	\$1,680.00
LC11	PROVIDERS OFFICE	5	MA - MP - SHOP	Ambetter	Ambetter	Specialist	201408	1	1	\$111.56	\$71.56	\$200.00
LC11	PROVIDERS OFFICE	5	CommCare	Bridge	Bridge	Specialist	201301	13	8	\$1,049.82	\$85.00	\$3,130.00
LC50	FEDERALLY QUALIFIED HEALTH CENTER	5	CommCare	Care	Care	Primary Care	201305	39	32	\$4,441.47	\$4,401.47	\$5,732.00
LC22	OUTPATIENT HOSPITAL	5	CommCare	Care	Care	Primary Care	201406	119	79	\$6,710.52	\$6,144.31	\$22,320.96
LC22	OUTPATIENT HOSPITAL	5	CommChoice	CommChoice	CommChoice	Specialist	201410	4	3	\$318.44	\$228.44	\$828.00
LC22	OUTPATIENT HOSPITAL	5	CommCare	Care	Care	Specialist	201405	901	665	\$52,509.91	\$50,589.63	\$241,915.57
LC11	PROVIDERS OFFICE	5	MA - MP - SHOP	Ambetter	Ambetter	Specialist	201404	5	3	\$396.56	\$290.62	\$720.00
LC11	PROVIDERS OFFICE	5		CarePlus	CarePlus	Specialist	201408	1	1	\$60.23	\$60.23	\$275.00
LC22	OUTPATIENT HOSPITAL	1		CarePlus	CarePlus	Primary Care	201409	1	1	\$44.99	\$44.99	\$97.00
LC22	OUTPATIENT HOSPITAL	5		CommChoice	CommChoice	Specialist	201407	4	1	\$67.50	\$67.50	\$604.00
LC22	OUTPATIENT HOSPITAL	5	CommCare	Care	Care	Specialist	201307	1,584	1,206	\$117,015.21	\$114,853.35	\$458,395.53
LC22	OUTPATIENT HOSPITAL	5		CommChoice	CommChoice	Specialist	201301	3	2	\$110.37	\$0.00	\$590.00
LC11	PROVIDERS OFFICE	5	CommChoice	CommChoice	CommChoice	Specialist	201307	17	14	\$2,603.48	\$2,119.28	\$4,383.00
LC24	AMBULATORY SURGICAL CENTER	5	CommCare	Care	Care	Specialist	201309	37	22	\$11,596.23	\$11,542.23	\$54,682.00
LC11	PROVIDERS OFFICE	5	CommChoice	CommChoice	CommChoice	Primary Care	201411	2	2	\$268.20	\$243.20	\$540.00
LC11	PROVIDERS OFFICE	5	CarePlus	CarePlus	CarePlus	Primary Care	201408	3,487	2,238	\$259,530.29	\$258,394.99	\$482,943.83
LC50	FEDERALLY QUALIFIED HEALTH CENTER	5	CommCare	Care	Care	Specialist	201307	2	1	\$40.56	\$40.56	\$118.00
LC11	PROVIDERS OFFICE	5	MA - MP - SHOP	Ambetter	Ambetter	Specialist	201406	2	2	\$155.55	\$75.60	\$315.00
LC11	PROVIDERS OFFICE	5	CarePlus	CarePlus	CarePlus	Primary Care	201402	4,770	3,053	\$355,518.89	\$353,587.78	\$670,589.96
LC22	OUTPATIENT HOSPITAL	1	CarePlus	CarePlus	CarePlus	Specialist	201402	1	1	\$89.51	\$89.51	\$365.00

LC11	PROVIDERS OFFICE	5	MA - MP - SHOF	Ambetter	Ambetter	Primary Care	201407	5	4	\$425.16	\$286.38	\$790.00
LC53	COMMUNITY MENTAL HEALTH CENTER	1	CommCare	Care	Care	Primary Care	201404	7	7	\$400.24	\$400.24	\$575.00
LC11	PROVIDERS OFFICE	1	CommCare	Care	Care	Primary Care	201309	255	220	\$15,802.33	\$13,985.91	\$31,766.89
LC11	PROVIDERS OFFICE	5	CarePlus	CarePlus	CarePlus	Primary Care	201401	9,585	6,319	\$721,684.99	\$718,815.13	\$1,351,405.82
LC24	AMBULATORY SURGICAL CENTER	5	CommChoice	CommChoice	CommChoice	Specialist	201303	2	2	\$1,042.52	\$962.52	\$1,688.00
LC22	OUTPATIENT HOSPITAL	5	CommChoice	CommChoice	CommChoice	Primary Care	201401	8	7	\$623.82	\$439.45	\$1,940.00
LC11	PROVIDERS OFFICE	1	CommBridge	Care	Care	Primary Care	201405	3	2	\$157.62	\$127.62	\$375.00
LC11	PROVIDERS OFFICE	5	CarePlus	Care	Care	Primary Care	201408	7	1	\$211.99	\$211.99	\$425.00
LC22	OUTPATIENT HOSPITAL	5	CommCare	Care	Care	Specialist	201406	895	673	\$54,351.60	\$52,179.40	\$249,181.97
LC24	AMBULATORY SURGICAL CENTER	5		Care	Care	Specialist	201306	2	1	\$256.11	\$131.11	\$1,500.00
LC11	PROVIDERS OFFICE	5	CarePlus	Care	Care	Specialist	201402	1	1	\$138.29	\$120.29	\$367.00
LC22	OUTPATIENT HOSPITAL	1		CommChoice	CommChoice	Primary Care	201304	1	1	\$26.48	\$1.48	\$52.50
LC11	PROVIDERS OFFICE	1	CarePlus	Care	Care	Primary Care	201407	69	17	\$1,299.98	\$1,299.98	\$2,281.90
LC11	PROVIDERS OFFICE	5		Care	Care	Primary Care	201301	38	27	\$2,936.27	\$2,811.27	\$6,175.89
LC50	FEDERALLY QUALIFIED HEALTH CENTER	5	CarePlus	CarePlus	CarePlus	Primary Care	201403	140	123	\$35,734.75	\$35,700.37	\$57,172.96
LC11	PROVIDERS OFFICE	5	MA - MP - SHOF	Ambetter	Ambetter	Primary Care	201412	4	1	\$163.21	\$130.21	\$434.00
LC50	FEDERALLY QUALIFIED HEALTH CENTER	5	CarePlus	CarePlus	CarePlus	Specialist	201403	30	26	\$3,314.53	\$3,314.53	\$4,272.00
LC50	FEDERALLY QUALIFIED HEALTH CENTER	5	CarePlus	CarePlus	CarePlus	Primary Care	201410	199	158	\$43,175.07	\$43,175.07	\$65,333.35
LC11	PROVIDERS OFFICE	5	MA - MP - SHOF	Ambetter	Ambetter	Specialist	201401	2	1	\$124.79	\$46.33	\$260.00
LC11	PROVIDERS OFFICE	5	CommCare	Care	Care	Primary Care	201403	1,848	1,258	\$143,253.79	\$134,830.23	\$271,986.69
LC11	PROVIDERS OFFICE	5		Care	Care	Specialist	201304	15	9	\$1,100.05	\$1,100.05	\$3,686.00
LC11	PROVIDERS OFFICE	1	CommBridge	Bridge	Bridge	Primary Care	201401	4	4	\$198.61	\$198.61	\$463.00
LC50	FEDERALLY QUALIFIED HEALTH CENTER	1	CarePlus	CarePlus	CarePlus	Primary Care	201409	30	29	\$1,954.84	\$1,954.84	\$3,770.00
LC50	FEDERALLY QUALIFIED HEALTH CENTER	5	CommCare	Care	Care	Specialist	201312	4	2	\$81.12	\$81.12	\$236.00
LC11	PROVIDERS OFFICE	1		CommChoice	CommChoice	Primary Care	201302	4	4	\$210.16	\$52.54	\$640.00
LC22	OUTPATIENT HOSPITAL	5	CommChoice	CommChoice	CommChoice	Primary Care	201307	8	6	\$964.91	\$667.84	\$2,307.00
LC22	OUTPATIENT HOSPITAL	1	CommCare	Care	Care	Primary Care	201301	28	23	\$3,660.75	\$3,679.01	\$6,159.63
LC22	OUTPATIENT HOSPITAL	5		CommChoice	CommChoice	Specialist	201309	1	1	\$36.07	\$0.00	\$175.00
LC24	AMBULATORY SURGICAL CENTER	5	CommCare	Care	Care	Specialist	201312	25	15	\$8,279.62	\$8,171.62	\$43,028.56
LC22	OUTPATIENT HOSPITAL	1	CommCare	Care	Care	Primary Care	201406	9	8	\$455.57	\$455.57	\$2,131.17
LC22	OUTPATIENT HOSPITAL	5	CommCare	Care	Care	Specialist	201310	1,861	1,369	\$122,031.69	\$119,610.33	\$503,004.06
LC22	OUTPATIENT HOSPITAL	5	MA - MP - SHOF	Ambetter	Ambetter	Specialist	201412	3	3	\$138.07	\$0.00	\$362.00
LC11	PROVIDERS OFFICE	5	CommCare	Care	Care	Primary Care	201301	6,014	3,743	\$412,027.54	\$390,461.46	\$807,962.56
LC11	PROVIDERS OFFICE	1		CommChoice	CommChoice	Primary Care	201303	4	4	\$210.16	\$210.16	\$640.00
LC11	PROVIDERS OFFICE	5	CarePlus	CarePlus	CarePlus	Specialist	201401	6,686	4,445	\$381,790.54	\$379,465.81	\$1,186,854.00
LC11	PROVIDERS OFFICE	1	CommCare	Care	CommCare	Primary Care	201412	4	4	\$210.16	\$185.16	\$460.00
LC22	OUTPATIENT HOSPITAL	5	MA - MP - SHOF	Ambetter	Ambetter	Specialist	201406	1	1	\$131.88	\$0.00	\$509.00
LC11	PROVIDERS OFFICE	5		Care	Care	Specialist	201401	2	2	\$148.82	\$130.82	\$436.00
LC11	PROVIDERS OFFICE	5		CarePlus	CarePlus	Specialist	201409	1	1	\$89.08	\$89.08	\$334.00
LC50	FEDERALLY QUALIFIED HEALTH CENTER	5	CommCare	Care	Care	Specialist	201404	3	3	\$0.00	\$0.00	\$64.00
LC11	PROVIDERS OFFICE	5		Care	Care	Primary Care	201407	3	3	\$391.62	\$376.62	\$506.00
LC53	COMMUNITY MENTAL HEALTH CENTER	1	CarePlus	CarePlus	CarePlus	Primary Care	201405	120	120	\$12,084.96	\$12,049.21	\$20,729.00
LC11	PROVIDERS OFFICE	5	CarePlus	CarePlus	CarePlus	Primary Care	201406	4,314	2,833	\$321,983.49	\$320,065.75	\$623,325.06
LC22	OUTPATIENT HOSPITAL	5	CommChoice	CommChoice	CommChoice	Specialist	201411	4	3	\$348.84	\$303.84	\$915.00
LC50	FEDERALLY QUALIFIED HEALTH CENTER	1	CommCare	Care	Care	Primary Care	201411	4	4	\$228.34	\$228.34	\$370.00
LC11	PROVIDERS OFFICE	5		CommChoice	CommChoice	Primary Care	201301	1	1	\$110.15	\$0.00	\$224.00
LC22	OUTPATIENT HOSPITAL	1	CommCare	Care	Care	Primary Care	201309	9	8	\$1,122.51	\$1,102.51	\$1,819.00
LC11	PROVIDERS OFFICE	1	CommCare	CarePlus	CarePlus	Primary Care	201403	62	15	\$1,309.76	\$1,309.76	\$2,478.80
LC11	PROVIDERS OFFICE	5	CarePlus	CarePlus	CarePlus	Specialist	201408	2,162	1,472	\$141,578.87	\$139,931.44	\$425,038.88
LC22	OUTPATIENT HOSPITAL	1		CommChoice	CommChoice	Primary Care	201302	1	1	\$9.59	\$0.00	\$25.50
LC11	PROVIDERS OFFICE	5	CommCare	Care	Care	Specialist	201407	1,050	674	\$76,339.70	\$68,825.66	\$215,664.28

LC22	OUTPATIENT HOSPITAL	1	CommCare	Care	Care	Primary Care	201409	11	8	\$493.46	\$493.46	\$2,465.30
LC24	AMBULATORY SURGICAL CENTER	5	CarePlus	CarePlus	CarePlus	Specialist	201401	60	36	\$5,991.49	\$6,047.84	\$34,240.22
LC22	OUTPATIENT HOSPITAL	5	CommCare	Bridge	Bridge	Specialist	201301	19	14	\$906.05	\$25.00	\$2,812.20
LC22	OUTPATIENT HOSPITAL	5		Care	Care	Specialist	201309	2	2	\$88.38	\$88.38	\$393.00
LC11	PROVIDERS OFFICE	1	CarePlus		CarePlus	Primary Care	201408	67	63	\$771.48	\$771.48	\$1,183.20
LC11	PROVIDERS OFFICE	5	CarePlus	Care	Care	Specialist	201410	1	1	\$109.12	\$109.12	\$226.00
LC24	AMBULATORY SURGICAL CENTER	5	CommCare	Care	Care	Specialist	201303	21	17	\$11,286.75	\$11,056.75	\$45,462.10
LC22	OUTPATIENT HOSPITAL	5	CarePlus	CarePlus	CarePlus	Primary Care	201401	1,339	1,184	\$82,213.57	\$81,672.78	\$266,934.71
LC22	OUTPATIENT HOSPITAL	1	CommCare	Care	Care	Primary Care	201407	20	18	\$1,355.29	\$1,320.29	\$4,597.59
LC11	PROVIDERS OFFICE	5		Care	Care	Specialist	201406	3	2	\$151.34	\$75.73	\$452.30
LC50	FEDERALLY QUALIFIED HEALTH CENTER	5	CommCare	Care	Care	Specialist	201412	3	3	\$430.24	\$412.24	\$513.00
LC11	PROVIDERS OFFICE	5	CommChoice	CommChoice	CommChoice	Specialist	201412	1	1	\$199.58	\$199.58	\$350.00
LC50	FEDERALLY QUALIFIED HEALTH CENTER	5	CarePlus	CarePlus	CarePlus	Primary Care	201404	159	138	\$33,249.40	\$33,329.29	\$52,028.00
LC11	PROVIDERS OFFICE	1		CarePlus	CarePlus	Primary Care	201408	3	3	\$185.88	\$185.88	\$450.00
LC50	FEDERALLY QUALIFIED HEALTH CENTER	5	CommCare	Care	Care	Primary Care	201405	2	2	\$153.26	\$153.26	\$195.00
LC22	OUTPATIENT HOSPITAL	5	CommCare	Care	Care	Primary Care	201309	231	170	\$15,228.38	\$14,641.49	\$53,400.46
LC11	PROVIDERS OFFICE	5		CarePlus	CarePlus	Specialist	201405	3	2	\$253.11	\$253.11	\$1,020.00
LC11	PROVIDERS OFFICE	5	CommChoice	CommChoice	CommChoice	Specialist	201404	6	5	\$908.04	\$264.19	\$1,713.00
LC11	PROVIDERS OFFICE	5		Care	Care	Primary Care	201308	11	9	\$1,137.92	\$1,137.92	\$1,901.00
LC22	OUTPATIENT HOSPITAL	1	CarePlus	Bridge	Bridge	Primary Care	201403	2	2	\$66.05	\$66.05	\$215.00
LC22	OUTPATIENT HOSPITAL	5	CommCare	Care	Care	Primary Care	201303	412	334	\$26,865.71	\$25,282.63	\$88,029.40
LC11	PROVIDERS OFFICE	5		CommChoice	CommChoice	Primary Care	201306	11	2	\$302.27	\$232.99	\$725.00
LC11	PROVIDERS OFFICE	5	CarePlus	CarePlus	CarePlus	Specialist	201404	3,402	2,314	\$201,948.02	\$201,148.16	\$568,130.64
LC11	PROVIDERS OFFICE	1		Care	Care	Primary Care	201306	3	3	\$157.62	\$157.62	\$240.00
LC11	PROVIDERS OFFICE	5	CarePlus	Care	Care	Specialist	201408	1	1	\$109.12	\$109.12	\$226.00
LC50	FEDERALLY QUALIFIED HEALTH CENTER	5	CommCare	Care	Care	Primary Care	201406	11	9	\$1,036.33	\$1,006.33	\$1,451.00
LC50	FEDERALLY QUALIFIED HEALTH CENTER	5	CommCare	Care	Care	Primary Care	201402	21	11	\$1,509.69	\$1,459.69	\$1,933.00
LC11	PROVIDERS OFFICE	5	CommChoice	CommChoice	CommChoice	Primary Care	201308	57	34	\$5,192.67	\$4,184.97	\$8,903.16
LC11	PROVIDERS OFFICE	5	CommChoice	CommChoice	CommChoice	Primary Care	201401	44	23	\$3,236.91	\$2,615.68	\$5,959.50
LC50	FEDERALLY QUALIFIED HEALTH CENTER	5	CommCare	Care	Care	Specialist	201303	14	10	\$1,166.21	\$1,130.21	\$1,640.00
LC11	PROVIDERS OFFICE	1	CarePlus	Care	Care	Primary Care	201409	70	16	\$1,274.18	\$1,274.18	\$2,105.90
LC11	PROVIDERS OFFICE	5	MA - MP - SHOP	Ambetter	Ambetter	Primary Care	201403	2	2	\$341.18	\$341.18	\$440.00
LC22	OUTPATIENT HOSPITAL	5	CommCare	Care	Care	Primary Care	201310	284	196	\$16,622.49	\$15,752.17	\$58,765.24
LC22	OUTPATIENT HOSPITAL	5	CommChoice	CommChoice	CommChoice	Primary Care	201312	4	4	\$356.52	\$296.52	\$1,002.00
LC11	PROVIDERS OFFICE	5	CommCare	Care	Care	Primary Care	201404	1,739	1,173	\$133,713.70	\$125,064.03	\$254,178.66
LC11	PROVIDERS OFFICE	1	CarePlus	Bridge	Bridge	Primary Care	201408	1	1	\$52.54	\$52.54	\$125.00
LC53	COMMUNITY MENTAL HEALTH CENTER	1	CommCare	Care	Care	Primary Care	201412	1	1	\$52.54	\$52.54	\$85.00
LC11	PROVIDERS OFFICE	5	CarePlus	CarePlus	CarePlus	Specialist	201412	2,747	1,796	\$156,868.94	\$156,547.25	\$459,360.34
LC22	OUTPATIENT HOSPITAL	5		Care	Care	Specialist	201308	2	2	\$259.86	\$111.93	\$2,329.00
LC11	PROVIDERS OFFICE	5	CarePlus	Care	Care	Primary Care	201404	6	3	\$315.06	\$295.06	\$935.92
LC11	PROVIDERS OFFICE	1	CommCare	Care	Care	Primary Care	201408	474	244	\$18,260.85	\$17,030.85	\$37,394.94
LC22	OUTPATIENT HOSPITAL	5		Care	Care	Primary Care	201301	1	1	\$50.69	\$40.69	\$151.00
LC11	PROVIDERS OFFICE	5	CommCare	Care	Care	Primary Care	201407	1,409	947	\$110,743.86	\$104,314.01	\$215,132.21
LC50	FEDERALLY QUALIFIED HEALTH CENTER	1	CommCare	Care	Care	Primary Care	201404	2	2	\$82.50	\$82.50	\$260.00
LC22	OUTPATIENT HOSPITAL	5	CarePlus	CarePlus	CarePlus	Specialist	201404	2,652	2,054	\$150,002.41	\$148,619.47	\$725,049.57
LC53	COMMUNITY MENTAL HEALTH CENTER	1	CarePlus	Care	Care	Primary Care	201405	4	4	\$217.62	\$217.62	\$285.00
LC11	PROVIDERS OFFICE	1	CommCare	CarePlus	CarePlus	Primary Care	201402	7	7	\$509.39	\$509.39	\$1,010.00
LC50	FEDERALLY QUALIFIED HEALTH CENTER	5	CarePlus	CarePlus	CarePlus	Specialist	201408	31	24	\$2,971.73	\$2,971.73	\$3,902.33
LC50	FEDERALLY QUALIFIED HEALTH CENTER	5	CommCare	Care	Care	Primary Care	201409	17	13	\$1,645.39	\$1,555.39	\$2,165.00
LC11	PROVIDERS OFFICE	5	CommCare	Care	Care	Specialist	201303	4,097	2,548	\$331,639.90	\$313,178.91	\$895,552.01
LC11	PROVIDERS OFFICE	5		CommChoice	CommChoice	Primary Care	201308	4	2	\$157.80	\$122.96	\$309.00

LC11	PROVIDERS OFFICE	5	MA - MP - SHOF	Ambetter	Ambetter	Specialist	201410	1	1	\$80.18	\$45.18	\$150.00
LC11	PROVIDERS OFFICE	1		CommChoice	CommChoice	Primary Care	201402	4	4	\$210.16	\$0.00	\$540.00
LC11	PROVIDERS OFFICE	5	CommCare	Care	Care	Primary Care	201307	3,236	2,184	\$244,260.60	\$233,420.76	\$480,968.90
LC11	PROVIDERS OFFICE	1		CommChoice	CommChoice	Primary Care	201404	2	2	\$105.08	\$55.08	\$270.00
LC24	AMBULATORY SURGICAL CENTER	5	CommCare	Care	Care	Specialist	201310	42	32	\$11,459.34	\$11,124.34	\$55,303.50
LC50	FEDERALLY QUALIFIED HEALTH CENTER	5	CommCare	Care	Care	Primary Care	201407	28	18	\$2,172.09	\$2,092.09	\$2,950.00
LC11	PROVIDERS OFFICE	5	MA - MP - SHOF	Ambetter	Ambetter	Specialist	201406	9	7	\$846.77	\$302.02	\$2,129.00
LC11	PROVIDERS OFFICE	5		CarePlus	CarePlus	Specialist	201412	2	1	\$193.46	\$193.46	\$737.00
LC22	OUTPATIENT HOSPITAL	5	CommCare	Care	Care	Primary Care	201301	618	437	\$36,561.74	\$34,546.97	\$121,338.10
LC11	PROVIDERS OFFICE	5	CommCare	Care	Care	Specialist	201411	924	580	\$65,336.97	\$58,925.35	\$185,807.55
LC22	OUTPATIENT HOSPITAL	5	CommChoice	CommChoice	CommChoice	Primary Care	201305	7	6	\$794.08	\$561.20	\$2,031.00
LC11	PROVIDERS OFFICE	5		Care	Care	Specialist	201305	21	14	\$1,748.04	\$1,730.04	\$5,814.00
LC11	PROVIDERS OFFICE	1	CommCare	Bridge	Bridge	Primary Care	201401	4	4	\$210.16	\$210.16	\$640.00
LC22	OUTPATIENT HOSPITAL	5	CommChoice	CommChoice	CommChoice	Specialist	201406	24	16	\$2,517.77	\$2,435.04	\$10,269.04
LC53	COMMUNITY MENTAL HEALTH CENTER	5	CarePlus	CarePlus	CarePlus	Specialist	201410	1	1	\$47.36	\$47.36	\$150.00
LC53	COMMUNITY MENTAL HEALTH CENTER	1	CarePlus	CarePlus	CarePlus	Primary Care	201409	81	74	\$7,744.74	\$7,744.74	\$10,776.00
LC50	FEDERALLY QUALIFIED HEALTH CENTER	5	CarePlus	CarePlus	CarePlus	Specialist	201402	43	37	\$3,148.25	\$3,152.42	\$4,802.04
LC22	OUTPATIENT HOSPITAL	5		CommChoice	CommChoice	Primary Care	201303	1	1	\$78.76	\$33.76	\$338.00
LC22	OUTPATIENT HOSPITAL	5	MA - MP - SHOF	Ambetter	Ambetter	Specialist	201408	2	2	\$209.92	\$0.00	\$317.00
LC22	OUTPATIENT HOSPITAL	5		CommChoice	CommChoice	Primary Care	201403	1	1	\$84.37	\$0.00	\$224.00
LC11	PROVIDERS OFFICE	5		CarePlus	CarePlus	Specialist	201404	6	5	\$475.40	\$475.40	\$1,628.00
LC24	AMBULATORY SURGICAL CENTER	5	CommCare	Care	Care	Specialist	201403	10	4	\$2,227.55	\$2,187.55	\$19,178.00
LC11	PROVIDERS OFFICE	5		Care	Care	Primary Care	201302	25	16	\$1,789.26	\$1,576.87	\$3,590.30
LC11	PROVIDERS OFFICE	5		Care	Care	Primary Care	201303	16	13	\$1,638.51	\$1,500.24	\$3,001.00
LC11	PROVIDERS OFFICE	5	CommCare	Care	Care	Specialist	201410	1,061	637	\$81,727.42	\$74,495.44	\$225,246.54
LC11	PROVIDERS OFFICE	1		CommChoice	CommChoice	Primary Care	201403	3	3	\$157.62	\$25.48	\$405.00
LC53	COMMUNITY MENTAL HEALTH CENTER	1	CarePlus	CarePlus	CarePlus	Primary Care	201404	82	80	\$5,109.20	\$5,109.20	\$8,110.00
LC11	PROVIDERS OFFICE	5		Care	Care	Specialist	201306	11	8	\$1,223.91	\$1,133.91	\$2,807.00
LC11	PROVIDERS OFFICE	1		Care	Care	Primary Care	201412	1	1	\$52.54	\$52.54	\$80.00
LC11	PROVIDERS OFFICE	5	CommChoice	CommChoice	CommChoice	Specialist	201308	18	13	\$1,970.17	\$1,385.56	\$3,486.87
LC11	PROVIDERS OFFICE	1	CommCare	CarePlus	CarePlus	Primary Care	201407	67	10	\$740.42	\$740.42	\$1,145.10
LC22	OUTPATIENT HOSPITAL	5		Care	Care	Specialist	201305	13	9	\$924.30	\$816.38	\$3,435.00
LC24	AMBULATORY SURGICAL CENTER	5	CommCare	Care	Care	Specialist	201306	46	35	\$15,759.40	\$15,389.40	\$71,364.57
LC53	COMMUNITY MENTAL HEALTH CENTER	1	CommCare	Care	Care	Primary Care	201408	4	4	\$217.62	\$217.62	\$305.00
LC22	OUTPATIENT HOSPITAL	5	CarePlus	CarePlus	CarePlus	Primary Care	201410	300	284	\$19,403.18	\$19,372.43	\$73,013.23
LC50	FEDERALLY QUALIFIED HEALTH CENTER	5	CarePlus	CarePlus	CarePlus	Specialist	201404	39	37	\$4,075.47	\$4,075.47	\$5,728.00
LC11	PROVIDERS OFFICE	1	CommCare	Care	Care	Primary Care	201404	511	273	\$19,698.85	\$18,490.72	\$41,661.55
LC22	OUTPATIENT HOSPITAL	1	CommCare	Care	Care	Primary Care	201405	20	14	\$2,374.09	\$2,339.09	\$5,344.76
LC11	PROVIDERS OFFICE	5	MA - MP - SHOF	Ambetter	Ambetter	Primary Care	201409	6	2	\$272.23	\$188.89	\$737.00
LC50	FEDERALLY QUALIFIED HEALTH CENTER	1	CarePlus	CarePlus	CarePlus	Primary Care	201405	22	22	\$1,106.68	\$1,106.68	\$3,080.00
LC11	PROVIDERS OFFICE	5	CommChoice	CommChoice	CommChoice	Primary Care	201302	56	27	\$4,124.75	\$2,904.70	\$8,010.32
LC11	PROVIDERS OFFICE	5	MA - MP - SHOF	Ambetter	Ambetter	Primary Care	201411	6	4	\$448.42	\$328.42	\$943.00
LC22	OUTPATIENT HOSPITAL	5		CommChoice	CommChoice	Specialist	201308	1	1	\$92.63	\$67.63	\$419.00
LC11	PROVIDERS OFFICE	5		CarePlus	CarePlus	Primary Care	201401	8	6	\$703.79	\$703.79	\$1,323.00
LC22	OUTPATIENT HOSPITAL	5	MA - MP - SHOF	Ambetter	Ambetter	Specialist	201406	2	2	\$315.12	\$315.12	\$1,600.00
LC22	OUTPATIENT HOSPITAL	1	CarePlus	CarePlus	CarePlus	Primary Care	201406	196	143	\$19,259.58	\$19,259.58	\$49,411.66
LC22	OUTPATIENT HOSPITAL	5	CommCare	Care	Care	Primary Care	201305	489	328	\$29,772.46	\$28,364.46	\$105,225.62
LC11	PROVIDERS OFFICE	1	CommBridge	Bridge	Bridge	Primary Care	201405	1	1	\$52.54	\$52.54	\$133.00
LC11	PROVIDERS OFFICE	1	CommCare	Bridge	Bridge	Primary Care	201403	1	1	\$52.54	\$52.54	\$160.00
LC11	PROVIDERS OFFICE	1	CarePlus	Cenpatico-CeltiCar	CarePlus	Primary Care	201404	1	1	\$52.54	\$52.54	\$130.00
LC11	PROVIDERS OFFICE	5	CommCare	Care	Care	Specialist	201312	2,712	1,560	\$211,284.85	\$197,384.46	\$544,078.61

LC11	PROVIDERS OFFICE	5	CommCare	Care	Care	Primary Care	201312	3,672	2,269	\$257,203.94	\$244,213.03	\$515,073.97
LC22	OUTPATIENT HOSPITAL	1	CommCare	Care	Care	Primary Care	201307	11	10	\$1,179.19	\$1,139.19	\$2,075.00
LC11	PROVIDERS OFFICE	5	CommCare	Care	Care	Specialist	201402	1,242	769	\$96,179.46	\$87,169.81	\$256,575.36
LC11	PROVIDERS OFFICE	1	CommBridge	Care	Care	Primary Care	201404	4	3	\$210.16	\$170.16	\$500.00
LC11	PROVIDERS OFFICE	5	CarePlus	CarePlus	CarePlus	Specialist	201402	6	5	\$393.44	\$393.44	\$820.00
LC24	AMBULATORY SURGICAL CENTER	5	CommCare	Care	Care	Specialist	201405	9	7	\$1,209.91	\$1,209.91	\$5,950.02
LC11	PROVIDERS OFFICE	5	CommBridge	Bridge	Bridge	Primary Care	201301	1	1	\$124.40	\$35.00	\$300.00
LC22	OUTPATIENT HOSPITAL	1	CommChoice	CommChoice	CommChoice	Primary Care	201308	2	2	\$107.62	\$62.62	\$200.00
LC22	OUTPATIENT HOSPITAL	5	MA - MP - SHOP	Ambetter	Ambetter	Primary Care	201405	1	1	\$171.44	\$171.44	\$448.00
LC11	PROVIDERS OFFICE	1	CarePlus	CarePlus	CarePlus	Primary Care	201412	4	4	\$222.54	\$222.54	\$435.00
LC24	AMBULATORY SURGICAL CENTER	5	CarePlus	CarePlus	CarePlus	Specialist	201404	38	24	\$3,423.79	\$3,283.47	\$25,011.10
LC22	OUTPATIENT HOSPITAL	5	CarePlus	CarePlus	CarePlus	Primary Care	201402	640	565	\$42,179.00	\$41,466.71	\$138,906.35
LC22	OUTPATIENT HOSPITAL	5	CarePlus	CarePlus	CarePlus	Specialist	201406	2,337	1,804	\$131,650.54	\$130,391.42	\$646,332.79
LC22	OUTPATIENT HOSPITAL	5	CommCare	Care	Care	Specialist	201302	2,853	2,189	\$225,313.21	\$222,074.18	\$844,969.96
LC50	FEDERALLY QUALIFIED HEALTH CENTER	5	CommCare	Care	Care	Primary Care	201301	53	36	\$5,125.46	\$5,045.46	\$6,244.00
LC53	COMMUNITY MENTAL HEALTH CENTER	1	CarePlus	Care	Care	Primary Care	201406	5	3	\$330.48	\$330.48	\$449.00
LC11	PROVIDERS OFFICE	1	CommChoice	CommChoice	CommChoice	Primary Care	201310	12	12	\$831.19	\$300.87	\$1,957.00
LC11	PROVIDERS OFFICE	1	CommCare	CommCare	CommCare	Primary Care	201409	7	2	\$415.05	\$415.05	\$850.00
LC50	FEDERALLY QUALIFIED HEALTH CENTER	5	CommCare	Care	Care	Specialist	201304	1	1	\$8.02	\$8.02	\$33.00
LC22	OUTPATIENT HOSPITAL	1	CommChoice	CommChoice	CommChoice	Primary Care	201311	2	2	\$172.51	\$149.56	\$345.00
LC50	FEDERALLY QUALIFIED HEALTH CENTER	5	CommCare	Care	Care	Specialist	201410	5	4	\$198.15	\$198.15	\$453.00
LC11	PROVIDERS OFFICE	5	CommCare	Care	Care	Specialist	201409	1,061	645	\$78,118.90	\$70,668.31	\$219,159.66
LC11	PROVIDERS OFFICE	5	CommChoice	CommChoice	CommChoice	Specialist	201310	3	2	\$313.63	\$273.63	\$620.00
LC50	FEDERALLY QUALIFIED HEALTH CENTER	5	CommCare	Care	Care	Specialist	201305	6	4	\$383.40	\$365.40	\$548.30
LC11	PROVIDERS OFFICE	1	CarePlus	CarePlus	CarePlus	Primary Care	201410	4	4	\$234.92	\$234.92	\$390.00
LC11	PROVIDERS OFFICE	1	CommCare	CarePlus	CarePlus	Primary Care	201409	59	11	\$619.76	\$619.76	\$972.90
LC11	PROVIDERS OFFICE	1	Care	Care	Care	Primary Care	201305	2	2	\$105.08	\$105.08	\$160.00
LC22	OUTPATIENT HOSPITAL	5	CommCare	Care	Care	Primary Care	201312	329	199	\$20,370.94	\$19,313.98	\$77,725.44
LC53	COMMUNITY MENTAL HEALTH CENTER	1	CarePlus	Care	Care	Primary Care	201412	2	2	\$105.08	\$105.08	\$150.00
LC11	PROVIDERS OFFICE	1	CommCare	Care	Care	Primary Care	201410	461	240	\$17,498.58	\$16,368.58	\$35,311.77
LC11	PROVIDERS OFFICE	1	CommBridge	Care	Care	Primary Care	201411	1	1	\$52.54	\$42.54	\$125.00
LC22	OUTPATIENT HOSPITAL	5	CarePlus	CarePlus	CarePlus	Primary Care	201403	1	1	\$62.96	\$62.96	\$210.00
LC11	PROVIDERS OFFICE	5	CommChoice	CommChoice	CommChoice	Primary Care	201312	3	3	\$443.62	\$250.86	\$727.00
LC22	OUTPATIENT HOSPITAL	5	CommChoice	CommChoice	CommChoice	Specialist	201305	27	19	\$1,847.80	\$1,710.59	\$5,632.00
LC50	FEDERALLY QUALIFIED HEALTH CENTER	1	CommCare	CommCare	CommCare	Primary Care	201411	2	2	\$141.72	\$141.72	\$270.00
LC11	PROVIDERS OFFICE	1	CommCare	Care	Care	Primary Care	201302	435	354	\$28,506.98	\$27,078.00	\$58,362.03
LC11	PROVIDERS OFFICE	5	CommChoice	CommChoice	CommChoice	Specialist	201306	26	21	\$3,385.65	\$2,564.78	\$5,607.14
LC11	PROVIDERS OFFICE	5	Care	Care	Care	Primary Care	201402	6	5	\$448.76	\$428.76	\$1,240.39
LC11	PROVIDERS OFFICE	1	CarePlus	CarePlus	CarePlus	Primary Care	201401	4,262	2,097	\$184,470.92	\$185,379.46	\$337,068.42
LC11	PROVIDERS OFFICE	5	CommCare	Care	Care	Primary Care	201306	3,659	2,436	\$277,197.81	\$265,543.95	\$556,046.75
LC11	PROVIDERS OFFICE	1	CarePlus	Care	Care	Primary Care	201412	67	16	\$895.72	\$895.72	\$1,575.35
LC11	PROVIDERS OFFICE	5	MA - MP - SHOP	Ambetter	Ambetter	Specialist	201408	2	1	\$300.76	\$25.64	\$618.00
LC11	PROVIDERS OFFICE	5	CommChoice	CommChoice	CommChoice	Primary Care	201407	7	5	\$635.36	\$448.45	\$1,135.00
LC22	OUTPATIENT HOSPITAL	5	CarePlus	CarePlus	CarePlus	Specialist	201411	1,840	1,427	\$100,368.88	\$100,147.68	\$521,039.29
LC11	PROVIDERS OFFICE	5	CommChoice	CommChoice	CommChoice	Primary Care	201410	15	6	\$897.99	\$690.76	\$1,649.00
LC50	FEDERALLY QUALIFIED HEALTH CENTER	5	CommCare	Care	Care	Primary Care	201401	12	10	\$1,371.98	\$1,306.98	\$1,905.21
LC11	PROVIDERS OFFICE	5	CommChoice	CommChoice	CommChoice	Primary Care	201309	4	2	\$220.05	\$158.72	\$690.00
LC24	AMBULATORY SURGICAL CENTER	5	CommCare	Care	Care	Specialist	201304	28	19	\$11,033.61	\$10,843.61	\$49,357.00
LC11	PROVIDERS OFFICE	5	MA - MP - SHOP	Ambetter	Ambetter	Primary Care	201406	4	2	\$228.86	\$216.01	\$348.00
LC22	OUTPATIENT HOSPITAL	1	CarePlus	CarePlus	CarePlus	Primary Care	201412	228	148	\$22,136.38	\$22,136.38	\$55,127.38
LC22	OUTPATIENT HOSPITAL	5	CommChoice	CommChoice	CommChoice	Specialist	201401	30	21	\$2,325.13	\$2,127.61	\$8,292.00

LC50	FEDERALLY QUALIFIED HEALTH CENTER	5	CommCare	Care	Care	Primary Care	201408	30	21	\$2,750.40	\$2,615.40	\$3,570.00
LC11	PROVIDERS OFFICE	5	CommCare	Care	Care	Specialist	201302	3,765	2,415	\$321,150.57	\$303,072.96	\$881,756.68
LC11	PROVIDERS OFFICE	5	CarePlus	Care	Care	Specialist	201404	5	3	\$438.71	\$402.71	\$1,410.00
LC50	FEDERALLY QUALIFIED HEALTH CENTER	5	CommCare	Care	Care	Specialist	201411	5	4	\$447.11	\$411.11	\$543.00
LC11	PROVIDERS OFFICE	5	CommChoice	CommChoice	CommChoice	Specialist	201303	24	16	\$2,953.19	\$2,548.24	\$6,185.00
LC22	OUTPATIENT HOSPITAL	1	CommCare	CarePlus	CarePlus	Primary Care	201404	1	1	\$47.51	\$47.51	\$323.73
LC22	OUTPATIENT HOSPITAL	5	CommCare	Care	Care	Primary Care	201408	55	49	\$4,871.06	\$4,481.06	\$13,357.36
LC22	OUTPATIENT HOSPITAL	5	CommCare	Care	Care	Specialist	201408	742	546	\$44,659.37	\$42,851.31	\$192,437.90
LC24	AMBULATORY SURGICAL CENTER	5		CommChoice	CommChoice	Specialist	201301	1	1	\$554.98	\$514.98	\$1,785.00
LC22	OUTPATIENT HOSPITAL	1	CarePlus		CarePlus	Primary Care	201411	56	47	\$2,821.32	\$2,821.32	\$8,964.89
LC22	OUTPATIENT HOSPITAL	5	CommChoice	CommChoice	CommChoice	Specialist	201403	28	23	\$5,440.88	\$4,684.31	\$11,561.00
LC50	FEDERALLY QUALIFIED HEALTH CENTER	1	CarePlus	CarePlus	CarePlus	Primary Care	201408	25	25	\$1,429.61	\$1,429.61	\$3,361.00
LC22	OUTPATIENT HOSPITAL	1	CommCare	Care	Care	Primary Care	201403	18	16	\$1,040.04	\$1,005.04	\$4,067.18
LC53	COMMUNITY MENTAL HEALTH CENTER	5	CarePlus	CarePlus	CarePlus	Primary Care	201410	4	3	\$153.49	\$153.49	\$540.00
LC11	PROVIDERS OFFICE	5		Ambetter	Ambetter	Primary Care	201410	4	1	\$138.78	\$0.00	\$610.00
LC11	PROVIDERS OFFICE	1		Care	Care	Primary Care	201308	4	3	\$210.16	\$200.16	\$320.00
LC11	PROVIDERS OFFICE	5	CommChoice	CommChoice	CommChoice	Primary Care	201402	38	22	\$3,564.20	\$2,616.20	\$6,002.80
LC11	PROVIDERS OFFICE	5	MA - MP - SHOP	Ambetter	Ambetter	Specialist	201410	1	1	\$152.66	\$0.00	\$200.00
LC11	PROVIDERS OFFICE	1	CommBridge	Care	Care	Primary Care	201412	3	3	\$157.62	\$127.62	\$375.00
LC22	OUTPATIENT HOSPITAL	1	CommBridge	CarePlus	CarePlus	Primary Care	201409	3	2	\$103.25	\$103.25	\$350.00
LC11	PROVIDERS OFFICE	1		Care	Care	Primary Care	201406	5	5	\$262.70	\$262.70	\$400.00
LC22	OUTPATIENT HOSPITAL	1	CommCare	Care	Care	Primary Care	201408	13	10	\$619.74	\$594.74	\$2,799.13
LC22	OUTPATIENT HOSPITAL	1		CommChoice	CommChoice	Primary Care	201309	1	1	\$53.81	\$28.81	\$100.00
LC53	COMMUNITY MENTAL HEALTH CENTER	1	CarePlus	CarePlus	CarePlus	Primary Care	201406	84	82	\$6,499.67	\$6,499.67	\$11,418.00
LC11	PROVIDERS OFFICE	5	MA - MP - SHOP	Ambetter	Ambetter	Specialist	201410	2	1	\$106.35	\$56.35	\$234.00
LC11	PROVIDERS OFFICE	5	CommChoice	CommChoice	CommChoice	Primary Care	201409	11	5	\$577.80	\$547.06	\$907.00
LC11	PROVIDERS OFFICE	1	CommCare	CarePlus	CarePlus	Primary Care	201408	66	12	\$763.89	\$763.89	\$1,183.05
LC11	PROVIDERS OFFICE	1	CarePlus		CarePlus	Primary Care	201402	2	2	\$20.42	\$20.42	\$32.10
LC11	PROVIDERS OFFICE	5	MA - MP - SHOP	Ambetter	Ambetter	Primary Care	201407	10	6	\$596.47	\$464.71	\$1,477.00
LC22	OUTPATIENT HOSPITAL	5	CommCare	Care	Care	Primary Care	201405	140	108	\$9,070.26	\$8,218.62	\$35,899.04
LC50	FEDERALLY QUALIFIED HEALTH CENTER	5	CommCare	Care	Care	Primary Care	201309	54	31	\$4,000.70	\$3,910.70	\$6,087.63
LC22	OUTPATIENT HOSPITAL	5	MA - MP - SHOP	Ambetter	Ambetter	Specialist	201410	2	2	\$129.59	\$0.00	\$557.00
LC22	OUTPATIENT HOSPITAL	5	CarePlus	CarePlus	CarePlus	Primary Care	201404	501	482	\$28,696.44	\$28,455.62	\$108,154.81
LC50	FEDERALLY QUALIFIED HEALTH CENTER	5	CarePlus	CarePlus	CarePlus	Primary Care	201407	229	172	\$36,681.10	\$36,692.60	\$55,954.12
LC11	PROVIDERS OFFICE	1		CommChoice	CommChoice	Primary Care	201304	6	6	\$362.51	\$362.51	\$880.00
LC11	PROVIDERS OFFICE	5	CommCare	Care	Care	Primary Care	201406	1,677	1,127	\$129,594.89	\$121,886.54	\$245,257.54
LC22	OUTPATIENT HOSPITAL	1	CommCare	Care	Care	Primary Care	201401	24	17	\$1,122.41	\$1,112.41	\$4,803.63
LC22	OUTPATIENT HOSPITAL	5	MA - MP - SHOP	Ambetter	Ambetter	Primary Care	201411	1	1	\$108.92	\$0.00	\$210.00
LC22	OUTPATIENT HOSPITAL	1	CommCare	Care	Care	Primary Care	201402	22	18	\$1,062.77	\$1,022.77	\$4,584.17
LC22	OUTPATIENT HOSPITAL	5	CommCare	Care	Care	Primary Care	201404	197	126	\$11,720.89	\$10,843.21	\$35,862.70
LC11	PROVIDERS OFFICE	5	CommCare	Care	Care	Primary Care	201412	1,583	927	\$109,591.98	\$103,970.20	\$219,072.98
LC22	OUTPATIENT HOSPITAL	5	CarePlus	Care	Care	Specialist	201403	1	1	\$137.10	\$137.10	\$457.00
LC11	PROVIDERS OFFICE	5		Care	Care	Primary Care	201409	3	2	\$200.95	\$200.95	\$365.00
LC11	PROVIDERS OFFICE	5		Care	Care	Primary Care	201408	7	4	\$578.41	\$578.41	\$924.39
LC22	OUTPATIENT HOSPITAL	5	CommChoice	CommChoice	CommChoice	Primary Care	201301	6	5	\$438.86	\$143.48	\$1,134.00
LC11	PROVIDERS OFFICE	5		Care	Care	Primary Care	201401	6	4	\$445.58	\$425.58	\$700.00
LC11	PROVIDERS OFFICE	1	CommBridge		CommBridge	Primary Care	201411	2	2	\$106.13	\$96.13	\$375.00
LC22	OUTPATIENT HOSPITAL	1	CommBridge	Bridge	Bridge	Primary Care	201407	1	1	\$78.40	\$78.40	\$210.00
LC22	OUTPATIENT HOSPITAL	5		Care	Care	Specialist	201301	7	6	\$204.07	\$204.07	\$616.00
LC22	OUTPATIENT HOSPITAL	1		CarePlus	CarePlus	Primary Care	201410	1	1	\$44.99	\$44.99	\$97.00
LC24	AMBULATORY SURGICAL CENTER	5	CommCare	Care	Care	Specialist	201305	43	31	\$15,504.49	\$15,055.65	\$71,540.50

LC22	OUTPATIENT HOSPITAL	1	CommCare	Care	Care	Primary Care	201304	38	35	\$4,082.91	\$4,012.72	\$7,933.41
LC11	PROVIDERS OFFICE	1	CarePlus	CarePlus	CarePlus	Primary Care	201403	4,213	1,622	\$157,804.89	\$157,894.83	\$249,913.49
LC11	PROVIDERS OFFICE	5	CarePlus	Care	Care	Primary Care	201401	3	3	\$255.08	\$255.08	\$525.00
LC11	PROVIDERS OFFICE	5		Care	Care	Specialist	201407	1	1	\$63.37	\$63.37	\$155.39
LC50	FEDERALLY QUALIFIED HEALTH CENTER	5	CarePlus	CarePlus	CarePlus	Primary Care	201405	149	128	\$33,526.79	\$33,427.14	\$52,827.12
LC22	OUTPATIENT HOSPITAL	5	CarePlus	Care	Care	Specialist	201402	6	4	\$205.41	\$205.41	\$807.00
LC11	PROVIDERS OFFICE	5		Care	Care	Specialist	201301	12	11	\$1,490.59	\$1,432.59	\$3,129.00
LC11	PROVIDERS OFFICE	5	CarePlus	CarePlus	CarePlus	Primary Care	201403	5,031	3,369	\$391,261.26	\$388,949.92	\$725,077.71
LC11	PROVIDERS OFFICE	5		CommChoice	CommChoice	Specialist	201305	3	1	\$265.38	\$0.00	\$1,230.00
LC22	OUTPATIENT HOSPITAL	5	CommCare	Care	Care	Specialist	201304	2,955	2,237	\$229,996.80	\$226,785.90	\$855,422.39
LC11	PROVIDERS OFFICE	1	CommCare	Care	Care	Primary Care	201402	290	189	\$15,621.67	\$14,460.33	\$30,597.17
LC22	OUTPATIENT HOSPITAL	1	CommBridge	Bridge	Bridge	Primary Care	201408	1	1	\$44.99	\$44.99	\$75.00
LC22	OUTPATIENT HOSPITAL	5	CommCare	Care	Care	Specialist	201401	899	676	\$53,630.76	\$51,858.81	\$229,120.33
LC22	OUTPATIENT HOSPITAL	1	CommCare	Care	Care	Primary Care	201302	31	27	\$2,997.80	\$2,984.55	\$5,467.52
LC22	OUTPATIENT HOSPITAL	5	CommCare	Care	Care	Specialist	201308	1,701	1,262	\$108,918.34	\$106,298.12	\$472,161.48
LC11	PROVIDERS OFFICE	1	CarePlus	Care	Care	Primary Care	201408	84	21	\$1,582.79	\$1,582.79	\$2,790.85
LC22	OUTPATIENT HOSPITAL	5		CommChoice	CommChoice	Primary Care	201311	1	1	\$310.11	\$310.11	\$1,104.00
LC22	OUTPATIENT HOSPITAL	5	CommChoice	CommChoice	CommChoice	Specialist	201404	3	1	\$57.64	\$57.64	\$460.00
LC22	OUTPATIENT HOSPITAL	1	CarePlus	Care	Care	Primary Care	201403	1	1	\$80.00	\$80.00	\$200.00
LC11	PROVIDERS OFFICE	1	CommCare	Care	Care	Primary Care	201303	411	328	\$29,478.30	\$28,594.97	\$58,106.38
LC22	OUTPATIENT HOSPITAL	1	CommCare	Care	Care	Primary Care	201303	44	39	\$3,911.23	\$3,845.19	\$7,791.93
LC22	OUTPATIENT HOSPITAL	5	CommChoice	CommChoice	CommChoice	Primary Care	201302	5	4	\$261.94	\$221.94	\$1,317.00
LC11	PROVIDERS OFFICE	5	CommChoice	CommChoice	CommChoice	Specialist	201406	16	12	\$1,889.46	\$1,525.09	\$3,396.00
LC11	PROVIDERS OFFICE	1	CommCare	Bridge	Bridge	Primary Care	201310	3	3	\$157.62	\$157.62	\$480.00
LC53	COMMUNITY MENTAL HEALTH CENTER	1	CarePlus	CarePlus	CarePlus	Primary Care	201412	70	64	\$8,660.33	\$8,660.33	\$13,121.85
LC11	PROVIDERS OFFICE	1	CommBridge	Bridge	Bridge	Primary Care	201306	1	1	\$215.47	\$215.47	\$537.00
LC53	COMMUNITY MENTAL HEALTH CENTER	1	CommCare		CommCare	Primary Care	201411	1	1	\$52.54	\$52.54	\$85.00
LC24	AMBULATORY SURGICAL CENTER	5	CarePlus	CarePlus	CarePlus	Specialist	201408	32	17	\$5,994.50	\$5,994.50	\$32,303.06
LC22	OUTPATIENT HOSPITAL	5		CommChoice	CommChoice	Specialist	201303	3	2	\$93.45	\$79.20	\$464.00
LC11	PROVIDERS OFFICE	5		Care	Care	Primary Care	201312	4	3	\$405.33	\$405.33	\$534.00
LC50	FEDERALLY QUALIFIED HEALTH CENTER	5	CarePlus	CarePlus	CarePlus	Primary Care	201406	82	68	\$11,371.40	\$11,371.40	\$16,892.00
LC11	PROVIDERS OFFICE	1	CommCare		CommCare	Primary Care	201408	1	1	\$10.21	\$10.21	\$13.80
LC11	PROVIDERS OFFICE	5	CarePlus	CarePlus	CarePlus	Primary Care	201409	4,232	2,440	\$267,221.39	\$266,928.61	\$500,936.58
LC22	OUTPATIENT HOSPITAL	5	MA - MP - SHOP	Ambetter	Ambetter	Specialist	201411	2	1	\$39.31	\$39.31	\$123.00
LC24	AMBULATORY SURGICAL CENTER	5	CarePlus	CarePlus	CarePlus	Specialist	201403	49	28	\$8,000.96	\$8,000.96	\$43,471.15
LC11	PROVIDERS OFFICE	1				Primary Care	201411	4	4	\$222.54	\$222.54	\$395.00
LC53	COMMUNITY MENTAL HEALTH CENTER	1	CommCare	Care	Care	Primary Care	201405	3	3	\$153.79	\$153.79	\$184.18
LC11	PROVIDERS OFFICE	5	CommCare	Care	Care	Primary Care	201411	1,507	852	\$100,661.48	\$95,506.48	\$203,495.81
LC11	PROVIDERS OFFICE	1	CarePlus	Care	Care	Primary Care	201405	131	37	\$2,385.98	\$2,385.98	\$4,256.10
LC11	PROVIDERS OFFICE	5	MA - MP - SHOP	Ambetter	Ambetter	Primary Care	201410	6	5	\$510.20	\$437.69	\$890.00
LC22	OUTPATIENT HOSPITAL	5	MA - MP - SHOP	Ambetter	Ambetter	Specialist	201408	3	2	\$177.59	\$0.00	\$658.00
LC11	PROVIDERS OFFICE	1		Care	Care	Primary Care	201407	4	4	\$210.16	\$210.16	\$320.00
LC22	OUTPATIENT HOSPITAL	5	CarePlus	CarePlus	CarePlus	Primary Care	201408	256	240	\$14,616.64	\$14,283.62	\$52,489.30
LC11	PROVIDERS OFFICE	1	CommCare	Bridge	Bridge	Primary Care	201306	1	1	\$79.92	\$80.36	\$90.00
LC22	OUTPATIENT HOSPITAL	5	CommCare	Care	Care	Primary Care	201409	102	85	\$7,558.42	\$7,033.42	\$19,085.33
LC11	PROVIDERS OFFICE	5		CommChoice	CommChoice	Specialist	201303	1	1	\$3.38	\$3.38	\$20.00
LC22	OUTPATIENT HOSPITAL	5	CommCare	Care	Care	Specialist	201410	836	619	\$46,070.58	\$44,269.26	\$197,261.00
LC50	FEDERALLY QUALIFIED HEALTH CENTER	5	CarePlus	CarePlus	CarePlus	Specialist	201405	28	22	\$1,912.69	\$1,912.69	\$3,046.00
LC53	COMMUNITY MENTAL HEALTH CENTER	1	CarePlus	Care	Care	Primary Care	201401	1	1	\$76.75	\$76.75	\$164.00
LC24	AMBULATORY SURGICAL CENTER	5	CommCare	Care	Care	Specialist	201409	10	8	\$3,905.90	\$3,909.59	\$29,951.00
LC22	OUTPATIENT HOSPITAL	5	CommChoice	CommChoice	CommChoice	Primary Care	201407	2	2	\$213.96	\$0.00	\$377.00

LC11	PROVIDERS OFFICE	5	CommCare	Care	Care	Specialist	201406	1,255	747	\$87,683.74	\$79,837.34	\$235,150.36
LC11	PROVIDERS OFFICE	5	MA - MP - SHOP	Ambetter	Ambetter	Primary Care	201405	1	1	\$141.65	\$141.65	\$185.00
LC11	PROVIDERS OFFICE	5	CommChoice	CommChoice	CommChoice	Primary Care	201311	63	30	\$3,586.08	\$2,805.96	\$6,821.00
LC11	PROVIDERS OFFICE	1	CommCare	Care	Care	Primary Care	201403	351	250	\$17,988.34	\$16,789.68	\$38,094.09
LC22	OUTPATIENT HOSPITAL	5	CommCare	Care	Care	Specialist	201409	810	590	\$43,337.59	\$41,959.06	\$196,330.00
LC50	FEDERALLY QUALIFIED HEALTH CENTER	5	CommCare	Care	Care	Primary Care	201403	9	9	\$1,307.58	\$1,297.58	\$1,684.00
LC11	PROVIDERS OFFICE	1	CommCare	Bridge	Bridge	Primary Care	201303	1	1	\$79.92	\$81.69	\$200.00
LC22	OUTPATIENT HOSPITAL	5	MA - MP - SHOP	Ambetter	Ambetter	Specialist	201403	4	4	\$385.73	\$385.73	\$930.00
LC11	PROVIDERS OFFICE	1	CommCare	Bridge	Bridge	Primary Care	201311	5	5	\$337.35	\$337.35	\$612.54
LC11	PROVIDERS OFFICE	5		Care	Care	Primary Care	201410	2	2	\$236.75	\$236.75	\$440.00
LC11	PROVIDERS OFFICE	1	CarePlus	Care	Care	Primary Care	201403	69	21	\$1,565.98	\$1,555.98	\$3,103.99
LC11	PROVIDERS OFFICE	1	CommCare	Bridge	Bridge	Primary Care	201305	3	3	\$201.92	\$203.96	\$390.00
LC11	PROVIDERS OFFICE	5	CommChoice	CommChoice	CommChoice	Primary Care	201304	41	27	\$3,635.66	\$2,468.67	\$5,990.32
LC11	PROVIDERS OFFICE	5	MA - MP - SHOP	Ambetter	Ambetter	Primary Care	201407	1	1	\$117.30	\$92.30	\$145.00
LC50	FEDERALLY QUALIFIED HEALTH CENTER	1	CommCare	Care	Care	Primary Care	201406	2	2	\$141.06	\$141.06	\$305.00
LC11	PROVIDERS OFFICE	1		Care	Care	Primary Care	201411	1	1	\$41.25	\$41.25	\$55.00
LC50	FEDERALLY QUALIFIED HEALTH CENTER	5	CommCare	Care	Care	Primary Care	201410	31	24	\$3,079.44	\$2,934.44	\$4,116.00
LC11	PROVIDERS OFFICE	5		Care	Care	Primary Care	201403	12	5	\$773.69	\$753.69	\$1,033.39
LC11	PROVIDERS OFFICE	1	CommBridge	Bridge	Bridge	Primary Care	201410	1	1	\$53.59	\$53.59	\$250.00
LC11	PROVIDERS OFFICE	5	CarePlus	CarePlus	CarePlus	Primary Care	201405	4,581	3,140	\$359,993.50	\$357,536.17	\$699,309.79
LC22	OUTPATIENT HOSPITAL	1	CommCare	Bridge	Bridge	Primary Care	201308	1	1	\$99.90	\$99.90	\$155.00
LC11	PROVIDERS OFFICE	5	CarePlus	Care	Care	Specialist	201411	1	1	\$108.44	\$108.44	\$226.00
LC11	PROVIDERS OFFICE	5		Care	Care	Primary Care	201311	6	6	\$560.20	\$535.20	\$706.00
LC11	PROVIDERS OFFICE	5	CarePlus	CarePlus	CarePlus	Primary Care	201412	4,360	2,548	\$285,665.37	\$285,163.16	\$545,835.24
LC22	OUTPATIENT HOSPITAL	5		Care	Care	Primary Care	201302	1	1	\$78.01	\$68.01	\$223.00
LC11	PROVIDERS OFFICE	1	CarePlus	Care	Care	Primary Care	201402	18	10	\$736.21	\$736.21	\$1,500.46
LC11	PROVIDERS OFFICE	1	CommCare	CarePlus	CarePlus	Primary Care	201401	7	7	\$396.04	\$396.04	\$955.00
LC11	PROVIDERS OFFICE	1	CarePlus	Bridge	Bridge	Primary Care	201410	1	1	\$52.54	\$52.54	\$125.00
LC11	PROVIDERS OFFICE	1	CommBridge	Care	Care	Primary Care	201403	2	2	\$105.08	\$105.08	\$266.00
LC11	PROVIDERS OFFICE	5	CommChoice	CommChoice	CommChoice	Primary Care	201312	47	25	\$3,485.90	\$1,968.35	\$7,378.50
LC22	OUTPATIENT HOSPITAL	5		CommChoice	CommChoice	Specialist	201304	1	1	\$31.17	\$31.17	\$190.00
LC11	PROVIDERS OFFICE	1	CarePlus	CarePlus	CarePlus	Primary Care	201407	8,156	2,280	\$159,999.34	\$159,948.30	\$274,157.59
LC11	PROVIDERS OFFICE	1	CommCare	Care	Care	Primary Care	201305	474	372	\$30,714.28	\$30,149.25	\$65,395.57
LC22	OUTPATIENT HOSPITAL	5	CommChoice	CommChoice	CommChoice	Specialist	201407	8	5	\$884.86	\$839.86	\$3,064.02
LC22	OUTPATIENT HOSPITAL	5	CarePlus	CarePlus	CarePlus	Primary Care	201409	291	274	\$16,768.91	\$16,487.39	\$62,510.23
LC22	OUTPATIENT HOSPITAL	5		Care	Care	Specialist	201307	1	1	\$111.93	\$111.93	\$249.00
LC11	PROVIDERS OFFICE	5	CommChoice	CommChoice	CommChoice	Primary Care	201403	44	28	\$4,003.82	\$2,645.65	\$7,066.00
LC11	PROVIDERS OFFICE	1	CommCare	Bridge	Bridge	Primary Care	201402	4	4	\$252.93	\$252.93	\$685.00
LC22	OUTPATIENT HOSPITAL	5	CommCare	Care	Care	Primary Care	201311	259	165	\$13,656.04	\$12,886.66	\$49,025.99
LC11	PROVIDERS OFFICE	5	CommChoice	CommChoice	CommChoice	Specialist	201408	1	1	\$182.23	\$137.23	\$240.00
LC11	PROVIDERS OFFICE	5	CommCare	Care	Care	Specialist	201304	4,167	2,603	\$338,343.99	\$317,919.41	\$935,350.20
LC11	PROVIDERS OFFICE	5		CommChoice	CommChoice	Specialist	201311	1	1	\$196.48	\$196.48	\$548.00
LC22	OUTPATIENT HOSPITAL	5	CommCare	Care	Care	Primary Care	201410	84	74	\$6,325.68	\$5,795.68	\$17,336.10
LC22	OUTPATIENT HOSPITAL	5		CommChoice	CommChoice	Specialist	201311	3	3	\$223.14	\$183.14	\$556.00
LC53	COMMUNITY MENTAL HEALTH CENTER	1	CommCare	Care	Care	Primary Care	201308	1	1	\$52.54	\$52.54	\$130.00
LC11	PROVIDERS OFFICE	5	CarePlus	CarePlus	CarePlus	Specialist	201410	1	1	\$60.23	\$60.23	\$224.00
LC24	AMBULATORY SURGICAL CENTER	5	CarePlus	CarePlus	CarePlus	Specialist	201409	29	18	\$3,611.34	\$3,611.34	\$20,412.10
LC22	OUTPATIENT HOSPITAL	5	CommCare	Care	Care	Primary Care	201403	152	98	\$7,187.24	\$6,599.15	\$25,026.49
LC22	OUTPATIENT HOSPITAL	5	CommChoice	CommChoice	CommChoice	Primary Care	201303	6	4	\$612.24	\$322.46	\$1,569.00
LC22	OUTPATIENT HOSPITAL	5	CommChoice	CommChoice	CommChoice	Specialist	201306	23	19	\$1,523.97	\$1,363.97	\$5,156.00
LC11	PROVIDERS OFFICE	1	CarePlus	CarePlus	CarePlus	Primary Care	201402	1,924	851	\$73,473.07	\$73,620.68	\$128,995.69

LC22	OUTPATIENT HOSPITAL	5	CarePlus	CarePlus	CarePlus	Primary Care	201403	603	554	\$36,780.06	\$36,229.04	\$120,561.17
LC22	OUTPATIENT HOSPITAL	5	CommCare	Care	Care	Primary Care	201411	93	82	\$7,967.02	\$7,130.16	\$24,893.87
LC11	PROVIDERS OFFICE	5	MA - MP - SHOP	Ambetter	Ambetter	Specialist	201407	6	3	\$457.03	\$246.27	\$1,073.00
LC11	PROVIDERS OFFICE	5		CarePlus	CarePlus	Specialist	201406	1	1	\$89.08	\$89.08	\$334.00
LC22	OUTPATIENT HOSPITAL	5	CommChoice	CommChoice	CommChoice	Specialist	201301	47	33	\$2,437.39	\$2,082.59	\$6,790.00
LC22	OUTPATIENT HOSPITAL	5	CarePlus	Care	Care	Primary Care	201404	1	1	\$72.50	\$72.50	\$423.00
LC22	OUTPATIENT HOSPITAL	5	CarePlus	CarePlus	CarePlus	Specialist	201403	1	1	\$36.32	\$36.32	\$134.00
LC50	FEDERALLY QUALIFIED HEALTH CENTER	5	CarePlus	CarePlus	CarePlus	Specialist	201410	50	31	\$3,797.42	\$3,797.42	\$5,184.00
LC22	OUTPATIENT HOSPITAL	5		CommChoice	CommChoice	Primary Care	201306	1	1	\$204.52	\$204.52	\$520.00
LC11	PROVIDERS OFFICE	5	MA - MP - SHOP	Ambetter	Ambetter	Specialist	201406	8	3	\$339.89	\$0.00	\$775.00
LC50	FEDERALLY QUALIFIED HEALTH CENTER	5	CarePlus	CarePlus	CarePlus	Primary Care	201412	223	146	\$23,845.56	\$23,845.56	\$31,781.74
LC11	PROVIDERS OFFICE	1	CommCare	Care	Care	Primary Care	201311	284	227	\$16,546.48	\$14,610.94	\$34,188.22
LC50	FEDERALLY QUALIFIED HEALTH CENTER	1	CarePlus	CarePlus	CarePlus	Primary Care	201411	14	14	\$902.70	\$902.70	\$1,795.00
LC22	OUTPATIENT HOSPITAL	1	CommCare	Care	Care	Primary Care	201311	5	5	\$480.52	\$435.52	\$787.00
LC11	PROVIDERS OFFICE	5	CommCare	Care	Care	Primary Care	201304	4,168	2,835	\$320,159.26	\$308,038.23	\$638,553.94
LC22	OUTPATIENT HOSPITAL	1		CommChoice	CommChoice	Primary Care	201310	1	1	\$83.00	\$58.00	\$150.00
LC11	PROVIDERS OFFICE	1		CarePlus	CarePlus	Primary Care	201409	3	3	\$200.76	\$200.76	\$350.00
LC11	PROVIDERS OFFICE	5	MA - MP - SHOP	Ambetter	Ambetter	Specialist	201404	4	4	\$268.84	\$77.45	\$350.02
LC11	PROVIDERS OFFICE	1	CommBridge	Bridge	Bridge	Primary Care	201404	3	3	\$170.77	\$170.77	\$405.00
LC11	PROVIDERS OFFICE	5	CarePlus	CarePlus	CarePlus	Specialist	201407	2,745	1,828	\$161,095.84	\$159,749.17	\$471,894.49
LC22	OUTPATIENT HOSPITAL	1	CarePlus	Care	Care	Primary Care	201408	1	1	\$47.51	\$47.51	\$140.00
LC11	PROVIDERS OFFICE	1	CommBridge	Bridge	Bridge	Primary Care	201406	2	2	\$95.67	\$95.67	\$430.00
LC24	AMBULATORY SURGICAL CENTER	5	CommCare	Care	Care	Specialist	201406	11	6	\$1,281.52	\$1,281.52	\$8,180.02
LC11	PROVIDERS OFFICE	1	CommBridge	Bridge	Bridge	Primary Care	201409	1	1	\$78.28	\$78.28	\$280.00
LC11	PROVIDERS OFFICE	5	CarePlus	CarePlus	CarePlus	Specialist	201409	2,534	1,643	\$171,717.53	\$171,854.98	\$533,258.54
LC11	PROVIDERS OFFICE	5		Care	Care	Primary Care	201411	2	2	\$319.20	\$309.20	\$347.00
LC22	OUTPATIENT HOSPITAL	5	CommChoice	CommChoice	CommChoice	Specialist	201405	21	13	\$1,817.51	\$1,817.51	\$9,319.02
LC50	FEDERALLY QUALIFIED HEALTH CENTER	5	CarePlus	CarePlus	CarePlus	Specialist	201411	42	23	\$2,933.51	\$2,933.51	\$4,161.00
LC11	PROVIDERS OFFICE	5		CommChoice	CommChoice	Specialist	201404	1	1	\$123.46	\$78.46	\$200.00
LC22	OUTPATIENT HOSPITAL	5	CommChoice	CommChoice	CommChoice	Specialist	201308	30	22	\$2,472.60	\$2,142.26	\$10,036.00
LC11	PROVIDERS OFFICE	5	CommCare	Care	Care	Specialist	201404	1,219	817	\$97,219.93	\$88,475.00	\$273,373.20
LC11	PROVIDERS OFFICE	1	CarePlus		CarePlus	Primary Care	201410	36	25	\$2,072.36	\$1,926.56	\$4,245.70
LC22	OUTPATIENT HOSPITAL	5		CarePlus	CarePlus	Primary Care	201401	2	2	\$169.48	\$169.48	\$494.00
LC53	COMMUNITY MENTAL HEALTH CENTER	1	CarePlus	CarePlus	CarePlus	Primary Care	201407	93	92	\$9,483.33	\$9,483.33	\$14,710.00
LC22	OUTPATIENT HOSPITAL	1	CommChoice		CommChoice	Primary Care	201308	1	1	\$0.00	\$0.00	\$100.00
LC11	PROVIDERS OFFICE	5	CommChoice	CommChoice	CommChoice	Specialist	201402	14	12	\$1,711.07	\$908.45	\$3,049.00
LC11	PROVIDERS OFFICE	5	CommChoice	CommChoice	CommChoice	Specialist	201407	3	3	\$712.64	\$667.64	\$1,176.00
LC22	OUTPATIENT HOSPITAL	5	CommChoice	CommChoice	CommChoice	Specialist	201312	27	20	\$2,776.17	\$1,903.93	\$8,853.00
LC24	AMBULATORY SURGICAL CENTER	5	CarePlus	CarePlus	CarePlus	Specialist	201412	22	13	\$2,374.29	\$2,374.29	\$13,680.08
LC11	PROVIDERS OFFICE	5		CarePlus	CarePlus	Specialist	201411	1	1	\$60.23	\$60.23	\$224.00
LC11	PROVIDERS OFFICE	5		CarePlus	CarePlus	Primary Care	201408	7	4	\$344.59	\$344.59	\$995.00
LC50	FEDERALLY QUALIFIED HEALTH CENTER	1	CarePlus	CarePlus	CarePlus	Primary Care	201403	3	3	\$204.89	\$204.89	\$455.00
LC22	OUTPATIENT HOSPITAL	5	CommChoice	CommChoice	CommChoice	Specialist	201302	14	12	\$1,091.35	\$836.55	\$3,832.00
LC50	FEDERALLY QUALIFIED HEALTH CENTER	1	CarePlus	CarePlus	CarePlus	Primary Care	201410	28	28	\$1,661.95	\$1,661.95	\$3,200.00
LC11	PROVIDERS OFFICE	1		Care	Care	Primary Care	201307	4	2	\$210.16	\$210.16	\$365.00
LC22	OUTPATIENT HOSPITAL	1	CarePlus		CarePlus	Primary Care	201406	3	1	\$68.75	\$0.00	\$259.40
LC22	OUTPATIENT HOSPITAL	1	CarePlus	CarePlus	CarePlus	Primary Care	201408	206	163	\$12,546.93	\$12,514.14	\$36,183.52
LC11	PROVIDERS OFFICE	5		Care	Care	Specialist	201303	15	9	\$985.76	\$967.76	\$2,335.00
LC11	PROVIDERS OFFICE	5		Care	Care	Specialist	201302	5	5	\$674.61	\$620.61	\$1,463.40
LC22	OUTPATIENT HOSPITAL	1	CommCare	Care	Care	Primary Care	201310	6	6	\$558.08	\$513.08	\$937.00
LC24	AMBULATORY SURGICAL CENTER	5	CarePlus	CarePlus	CarePlus	Specialist	201410	21	14	\$2,244.48	\$2,244.48	\$15,060.06

LC53	COMMUNITY MENTAL HEALTH CENTER	1	CarePlus	Care	Care	Primary Care	201409	4	4	\$210.16	\$210.16	\$300.00
LC11	PROVIDERS OFFICE	5	CarePlus	CarePlus	CarePlus	Specialist	201403	3,485	2,230	\$202,180.80	\$201,409.40	\$577,946.49
LC11	PROVIDERS OFFICE	1		Care	Care	Primary Care	201302	2	2	\$152.35	\$132.35	\$180.00
LC11	PROVIDERS OFFICE	1		CommChoice	CommChoice	Primary Care	201305	10	10	\$525.40	\$525.40	\$1,425.00
LC22	OUTPATIENT HOSPITAL	5	CommCare	Care	Care	Specialist	201303	2,921	2,270	\$229,426.60	\$225,202.12	\$885,310.80
LC22	OUTPATIENT HOSPITAL	1	CommChoice	CommChoice	CommChoice	Primary Care	201308	1	1	\$83.00	\$56.56	\$150.00
LC22	OUTPATIENT HOSPITAL	5	CarePlus	CarePlus	CarePlus	Specialist	201407	2,346	1,787	\$135,154.05	\$133,114.15	\$694,175.95
LC22	OUTPATIENT HOSPITAL	5	CommChoice	CommChoice	CommChoice	Primary Care	201308	3	3	\$337.98	\$277.98	\$929.00
LC22	OUTPATIENT HOSPITAL	1	CommChoice	CommChoice	CommChoice	Primary Care	201312	1	1	\$83.00	\$53.99	\$150.00
LC11	PROVIDERS OFFICE	1	CommCare	Care	Care	Primary Care	201312	243	207	\$15,342.24	\$13,802.60	\$31,107.82
LC22	OUTPATIENT HOSPITAL	5	CommCare	Care	Care	Specialist	201309	1,638	1,238	\$113,485.16	\$110,448.13	\$463,914.98
LC11	PROVIDERS OFFICE	5		Care	Care	Primary Care	201309	15	9	\$909.19	\$810.92	\$1,568.18
LC11	PROVIDERS OFFICE	5		CommChoice	CommChoice	Specialist	201312	1	1	\$182.61	\$137.61	\$290.00
LC11	PROVIDERS OFFICE	5	MA - MP - SHOP	Ambetter	Ambetter	Primary Care	201404	4	2	\$404.13	\$300.22	\$700.00
LC11	PROVIDERS OFFICE	5	CommCare	Care	Care	Primary Care	201308	3,180	2,144	\$237,060.02	\$226,848.19	\$467,184.94
LC11	PROVIDERS OFFICE	5	MA - MP - SHOP	Ambetter	Ambetter	Primary Care	201412	5	3	\$372.04	\$113.26	\$700.00
LC50	FEDERALLY QUALIFIED HEALTH CENTER	5	CommCare	Care	Care	Primary Care	201310	28	21	\$2,605.16	\$2,565.16	\$3,378.63
LC11	PROVIDERS OFFICE	5	CommChoice	CommChoice	CommChoice	Primary Care	201305	49	33	\$4,714.71	\$2,814.83	\$8,171.32
LC11	PROVIDERS OFFICE	1	CommChoice	CommChoice	CommChoice	Primary Care	201309	1	1	\$51.58	\$51.58	\$250.00
LC22	OUTPATIENT HOSPITAL	5	CommChoice	CommChoice	CommChoice	Primary Care	201402	2	2	\$288.89	\$258.89	\$573.00
LC53	COMMUNITY MENTAL HEALTH CENTER	1	CommCare	Care	Care	Primary Care	201409	5	5	\$262.70	\$262.70	\$415.00
LC11	PROVIDERS OFFICE	5		CarePlus	CarePlus	Primary Care	201402	14	12	\$871.25	\$871.25	\$2,650.00
LC22	OUTPATIENT HOSPITAL	5	CommChoice	CommChoice	CommChoice	Specialist	201412	5	4	\$433.39	\$343.39	\$1,147.00
LC11	PROVIDERS OFFICE	5	CommChoice	CommChoice	CommChoice	Specialist	201301	24	19	\$3,143.92	\$2,305.16	\$5,588.80
LC11	PROVIDERS OFFICE	1	CommCare	Care	Care	Primary Care	201304	514	413	\$34,740.18	\$34,310.77	\$71,257.26
LC22	OUTPATIENT HOSPITAL	5	CommChoice	CommChoice	CommChoice	Primary Care	201409	1	1	\$84.37	\$54.37	\$148.00
LC53	COMMUNITY MENTAL HEALTH CENTER	1				Primary Care	201411	1	1	\$20.20	\$20.20	\$40.00
LC11	PROVIDERS OFFICE	5	CarePlus	CarePlus	CarePlus	Primary Care	201404	4,820	3,292	\$369,938.89	\$367,103.89	\$705,665.53
LC11	PROVIDERS OFFICE	5	CarePlus	CarePlus	CarePlus	Primary Care	201411	3,832	2,197	\$242,644.90	\$242,105.18	\$465,087.56
LC24	AMBULATORY SURGICAL CENTER	5	CommCare	Care	Care	Specialist	201301	40	31	\$16,422.86	\$16,228.86	\$66,739.00
LC11	PROVIDERS OFFICE	1		Care	Care	Primary Care	201309	3	2	\$157.62	\$147.62	\$240.00
LC22	OUTPATIENT HOSPITAL	1	CarePlus	Care	Care	Primary Care	201402	1	1	\$53.81	\$53.81	\$134.00
LC11	PROVIDERS OFFICE	1	CarePlus	CarePlus	CarePlus	Primary Care	201406	7,696	2,099	\$154,701.59	\$154,647.54	\$263,512.24
LC11	PROVIDERS OFFICE	5	MA - MP - SHOP	Ambetter	Ambetter	Primary Care	201406	1	1	\$75.63	\$50.63	\$224.00
LC22	OUTPATIENT HOSPITAL	5		Care	Care	Specialist	201306	6	4	\$230.64	\$230.64	\$563.00
LC22	OUTPATIENT HOSPITAL	1	CarePlus	CarePlus	CarePlus	Primary Care	201407	276	205	\$24,947.10	\$24,900.19	\$66,265.43
LC11	PROVIDERS OFFICE	5	CommCare	Care	Care	Specialist	201405	1,047	694	\$83,189.66	\$75,279.96	\$222,745.84
LC11	PROVIDERS OFFICE	5	MA - MP - SHOP	Ambetter	Ambetter	Specialist	201405	4	2	\$352.00	\$179.02	\$999.00
LC53	COMMUNITY MENTAL HEALTH CENTER	1	CarePlus	Bridge	Bridge	Primary Care	201408	1	1	\$52.54	\$52.54	\$85.00
LC22	OUTPATIENT HOSPITAL	5	CommChoice	CommChoice	CommChoice	Primary Care	201309	10	9	\$948.28	\$746.86	\$2,457.00
LC11	PROVIDERS OFFICE	1	CarePlus	CarePlus	CarePlus	Primary Care	201409	32	11	\$696.24	\$696.24	\$925.96
LC50	FEDERALLY QUALIFIED HEALTH CENTER	1	CarePlus	CarePlus	CarePlus	Primary Care	201412	27	27	\$1,678.70	\$1,678.70	\$3,545.00
LC22	OUTPATIENT HOSPITAL	5	CommCare	Care	Care	Specialist	201403	939	703	\$62,855.48	\$59,969.11	\$283,756.69
LC11	PROVIDERS OFFICE	5		CommChoice	CommChoice	Primary Care	201407	3	2	\$422.16	\$362.16	\$813.00
LC11	PROVIDERS OFFICE	5	CommCare	Care	Care	Primary Care	201401	1,999	1,286	\$146,704.38	\$138,144.38	\$280,765.73
LC22	OUTPATIENT HOSPITAL	5	CommChoice	CommChoice	CommChoice	Primary Care	201310	2	2	\$117.63	\$57.63	\$318.00
LC53	COMMUNITY MENTAL HEALTH CENTER	1	CarePlus	Care	Care	Primary Care	201407	5	4	\$270.16	\$270.16	\$360.00
LC11	PROVIDERS OFFICE	5	MA - MP - SHOP	Ambetter	Ambetter	Specialist	201403	2	1	\$320.59	\$280.59	\$400.00
LC11	PROVIDERS OFFICE	1	CarePlus	CarePlus	CarePlus	Primary Care	201410	7,281	1,749	\$134,125.15	\$134,072.61	\$218,842.94
LC22	OUTPATIENT HOSPITAL	1		CommChoice	CommChoice	Primary Care	201404	1	1	\$174.27	\$144.27	\$637.00
LC24	AMBULATORY SURGICAL CENTER	5	CommCare	Care	Care	Specialist	201412	6	6	\$1,342.70	\$1,292.70	\$10,942.00

LC11	PROVIDERS OFFICE	5	CommCare	Care	Care	Specialist	201311	2,691	1,620	\$201,052.92	\$187,368.28	\$555,720.91
LC11	PROVIDERS OFFICE	1	CommCare	Care	Care	Primary Care	201306	398	338	\$25,971.82	\$25,044.78	\$55,794.41
LC53	COMMUNITY MENTAL HEALTH CENTER	1	CarePlus	Care	Care	Primary Care	201403	2	2	\$272.54	\$272.54	\$295.00
LC11	PROVIDERS OFFICE	1	CarePlus	Bridge	Bridge	Primary Care	201404	2	2	\$117.46	\$117.46	\$225.00
LC53	COMMUNITY MENTAL HEALTH CENTER	1	CommCare	Care	Care	Primary Care	201303	1	1	\$79.92	\$70.95	\$100.00
LC11	PROVIDERS OFFICE	5	CommChoice	CommChoice	CommChoice	Specialist	201403	22	16	\$2,617.36	\$2,047.49	\$4,591.00
LC22	OUTPATIENT HOSPITAL	5	CommChoice	CommChoice	CommChoice	Primary Care	201403	2	2	\$168.74	\$0.00	\$448.00
LC11	PROVIDERS OFFICE	5		Care	Care	Primary Care	201304	9	7	\$613.31	\$603.31	\$1,143.00
LC22	OUTPATIENT HOSPITAL	1	CarePlus	CarePlus	CarePlus	Primary Care	201401	567	422	\$42,331.99	\$41,979.24	\$121,187.72
LC11	PROVIDERS OFFICE	1	CommCare	Bridge	Bridge	Primary Care	201304	6	4	\$335.90	\$338.82	\$700.00
LC50	FEDERALLY QUALIFIED HEALTH CENTER	5	CommCare	Care	Care	Primary Care	201302	44	36	\$5,012.98	\$4,897.98	\$6,303.00
LC11	PROVIDERS OFFICE	5	CommChoice	CommChoice	CommChoice	Primary Care	201310	104	45	\$6,973.62	\$4,567.49	\$13,617.80
LC53	COMMUNITY MENTAL HEALTH CENTER	1	CommCare	Care	Care	Primary Care	201403	8	8	\$1,285.88	\$1,285.88	\$1,395.00
LC11	PROVIDERS OFFICE	5	MA - MP - SHOP	Ambetter	Ambetter	Primary Care	201405	10	5	\$720.15	\$541.43	\$1,360.00
LC22	OUTPATIENT HOSPITAL	5		CarePlus	CarePlus	Specialist	201404	1	1	\$106.67	\$106.67	\$548.00
LC22	OUTPATIENT HOSPITAL	5	CommChoice	CommChoice	CommChoice	Specialist	201307	23	13	\$1,028.32	\$710.49	\$4,436.00
LC11	PROVIDERS OFFICE	1	CommCare	Bridge	Bridge	Primary Care	201309	1	1	\$79.92	\$79.92	\$90.00
LC11	PROVIDERS OFFICE	5	CarePlus	CarePlus	CarePlus	Specialist	201410	2,852	1,778	\$161,212.09	\$160,681.42	\$485,535.61
LC11	PROVIDERS OFFICE	5	CommChoice	CommChoice	CommChoice	Specialist	201309	19	18	\$2,631.72	\$1,955.67	\$4,221.00
LC22	OUTPATIENT HOSPITAL	5		Ambetter	Ambetter	Specialist	201410	1	1	\$141.10	\$0.00	\$206.00
LC22	OUTPATIENT HOSPITAL	5	CarePlus	CarePlus	CarePlus	Primary Care	201411	259	242	\$17,344.96	\$17,344.96	\$63,112.89
LC11	PROVIDERS OFFICE	5		Care	Care	Specialist	201310	4	3	\$292.43	\$292.43	\$851.00
LC11	PROVIDERS OFFICE	1	CommCare	Care	Care	Primary Care	201405	471	273	\$20,115.02	\$18,810.02	\$41,138.37
LC50	FEDERALLY QUALIFIED HEALTH CENTER	5	CommCare	Care	Care	Primary Care	201303	44	33	\$3,986.62	\$3,916.62	\$6,155.30
LC11	PROVIDERS OFFICE	5	CommChoice	CommChoice	CommChoice	Specialist	201302	13	11	\$2,573.31	\$2,367.45	\$4,415.00
LC50	FEDERALLY QUALIFIED HEALTH CENTER	5	CommCare	Care	Care	Primary Care	201311	32	23	\$3,004.09	\$2,954.09	\$4,313.00
LC50	FEDERALLY QUALIFIED HEALTH CENTER	5	CarePlus	CarePlus	CarePlus	Specialist	201412	44	29	\$3,501.75	\$3,501.75	\$4,613.00
LC22	OUTPATIENT HOSPITAL	5	CommChoice	CommChoice	CommChoice	Primary Care	201408	2	2	\$259.61	\$175.24	\$578.00
LC11	PROVIDERS OFFICE	1	CarePlus	CarePlus	CarePlus	Primary Care	201409	7,383	1,858	\$155,225.45	\$155,172.91	\$260,309.31
LC50	FEDERALLY QUALIFIED HEALTH CENTER	5	CommCare	Care	Care	Primary Care	201307	40	32	\$3,903.75	\$3,838.75	\$5,421.00
LC11	PROVIDERS OFFICE	1				Primary Care	201307	2	2	\$105.08	\$105.08	\$265.00
LC11	PROVIDERS OFFICE	5	CommCare	Bridge	Bridge	Primary Care	201301	13	13	\$1,329.99	\$169.10	\$2,319.40
LC11	PROVIDERS OFFICE	1	CommBridge	Care	Care	Primary Care	201407	1	1	\$52.54	\$42.54	\$125.00
LC11	PROVIDERS OFFICE	5	CommChoice	CommChoice	CommChoice	Primary Care	201309	55	39	\$5,881.06	\$4,133.10	\$10,328.00
LC53	COMMUNITY MENTAL HEALTH CENTER	1	CarePlus	CarePlus	CarePlus	Primary Care	201401	221	197	\$19,285.84	\$19,441.83	\$38,369.31
LC11	PROVIDERS OFFICE	5		Care	Care	Primary Care	201404	11	7	\$984.32	\$964.32	\$1,498.30
LC24	AMBULATORY SURGICAL CENTER	5	CarePlus	CarePlus	CarePlus	Specialist	201411	41	22	\$3,214.19	\$3,214.19	\$22,020.16
LC53	COMMUNITY MENTAL HEALTH CENTER	1		CarePlus	CarePlus	Primary Care	201411	7	7	\$238.42	\$238.42	\$415.00
LC11	PROVIDERS OFFICE	1	CarePlus	Care	Care	Primary Care	201410	80	22	\$1,646.13	\$1,646.13	\$3,306.30
LC50	FEDERALLY QUALIFIED HEALTH CENTER	5	CommCare	Care	Care	Specialist	201407	2	2	\$284.51	\$266.51	\$325.00
LC11	PROVIDERS OFFICE	1	CarePlus	Care	Care	Primary Care	201404	179	44	\$3,024.95	\$3,024.95	\$5,387.50
LC11	PROVIDERS OFFICE	5	CarePlus	CarePlus	CarePlus	Specialist	201402	2,933	1,837	\$166,091.74	\$165,019.50	\$486,062.78
LC11	PROVIDERS OFFICE	1		CommChoice	CommChoice	Primary Care	201306	5	5	\$262.70	\$262.70	\$765.00
LC11	PROVIDERS OFFICE	1	CommCare	Care	Care	Primary Care	201411	264	142	\$10,312.37	\$9,657.37	\$19,882.27
LC22	OUTPATIENT HOSPITAL	5	CommCare	Care	Care	Primary Care	201306	312	241	\$20,139.53	\$19,015.17	\$61,311.41
LC50	FEDERALLY QUALIFIED HEALTH CENTER	1	CommCare	Care	Care	Primary Care	201412	5	5	\$269.59	\$269.59	\$500.00
LC11	PROVIDERS OFFICE	5		Care	Care	Primary Care	201310	4	4	\$301.20	\$301.20	\$644.51
LC50	FEDERALLY QUALIFIED HEALTH CENTER	1	CarePlus		CarePlus	Primary Care	201411	7	7	\$353.09	\$353.09	\$870.00
LC50	FEDERALLY QUALIFIED HEALTH CENTER	5	CommCare	Care	Care	Specialist	201401	2	1	\$40.56	\$40.56	\$121.00
LC22	OUTPATIENT HOSPITAL	5	CommCare	Care	Care	Specialist	201404	965	729	\$56,492.27	\$53,977.14	\$247,373.52
LC22	OUTPATIENT HOSPITAL	1	CommCare	CarePlus	CarePlus	Primary Care	201401	7	3	\$301.83	\$301.83	\$1,725.58

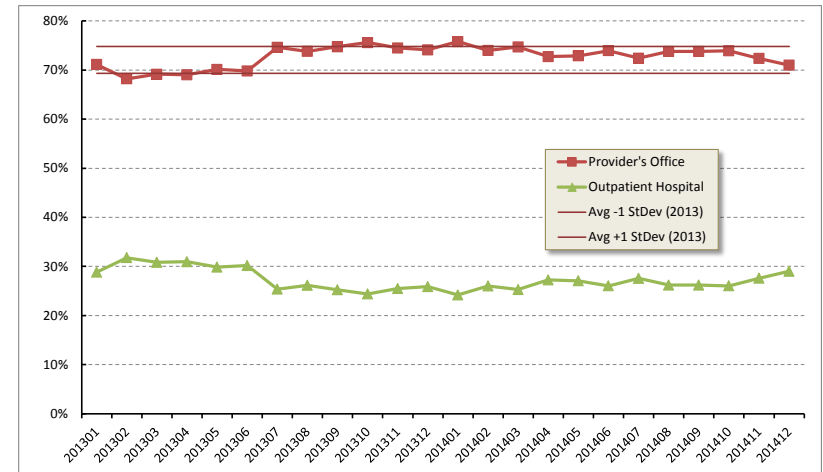
LC22	OUTPATIENT HOSPITAL	1	CarePlus	CarePlus	Primary Care	201401	2	2	\$0.00	\$0.00	\$627.00	
LC50	FEDERALLY QUALIFIED HEALTH CENTER	5	CarePlus	CarePlus	Primary Care	201401	425	364	\$112,724.87	\$112,724.87	\$182,163.61	
LC22	OUTPATIENT HOSPITAL	5	CommCare	Care	Specialist	201305	2,736	2,118	\$223,435.97	\$219,510.99	\$850,311.18	
LC11	PROVIDERS OFFICE	1	Care	Care	Primary Care	201408	4	4	\$210.16	\$210.16	\$320.00	
LC11	PROVIDERS OFFICE	5	Care	Care	Primary Care	201305	22	11	\$1,324.90	\$1,309.90	\$2,152.51	
LC11	PROVIDERS OFFICE	5	CommCare	Care	Specialist	201412	916	561	\$60,015.87	\$53,743.48	\$176,718.94	
LC22	OUTPATIENT HOSPITAL	5	CarePlus	CarePlus	Specialist	201408	2,028	1,572	\$113,216.82	\$111,993.23	\$559,586.29	
LC22	OUTPATIENT HOSPITAL	1	CommCare	Care	Primary Care	201410	20	16	\$1,260.98	\$1,235.98	\$4,205.02	
LC11	PROVIDERS OFFICE	5	CommCare	Care	Primary Care	201302	4,100	2,653	\$306,592.58	\$294,855.87	\$607,543.60	
LC11	PROVIDERS OFFICE	1	CommCare	Care	Primary Care	201412	428	214	\$14,791.94	\$13,926.94	\$30,832.74	
LC11	PROVIDERS OFFICE	5	CarePlus	CarePlus	Specialist	201406	3,027	1,960	\$177,149.96	\$176,440.19	\$512,120.23	
LC24	AMBULATORY SURGICAL CENTER	5	CarePlus	CarePlus	Specialist	201405	50	34	\$6,290.02	\$6,293.24	\$38,635.08	
LC11	PROVIDERS OFFICE	5	MA - MP - SHOP	Ambetter	Ambetter	Specialist	201412	1	1	\$152.66	\$0.00	\$175.00
LC22	OUTPATIENT HOSPITAL	5		CommChoice	CommChoice	Specialist	201310	2	1	\$40.56	\$40.56	\$136.00
LC22	OUTPATIENT HOSPITAL	5		CommChoice	CommChoice	Specialist	201305	3	2	\$129.06	\$129.06	\$640.00
LC11	PROVIDERS OFFICE	5	MA - MP - SHOP	Ambetter	Ambetter	Primary Care	201409	2	2	\$151.28	\$111.28	\$448.00
LC11	PROVIDERS OFFICE	1	CarePlus	Bridge	Bridge	Primary Care	201403	2	2	\$105.08	\$105.08	\$255.00
LC22	OUTPATIENT HOSPITAL	5	MA - MP - SHOP	Ambetter	Ambetter	Specialist	201412	3	1	\$405.69	\$0.00	\$825.00
LC24	AMBULATORY SURGICAL CENTER	5	CommCare	Care	Care	Specialist	201307	28	21	\$9,893.06	\$9,771.06	\$49,791.00
LC11	PROVIDERS OFFICE	1	CarePlus	CarePlus	CarePlus	Primary Care	201408	7,506	1,892	\$141,425.62	\$141,425.62	\$236,757.00
LC53	COMMUNITY MENTAL HEALTH CENTER	1	CommCare	Care	Care	Primary Care	201402	4	4	\$210.16	\$210.16	\$340.00
LC53	COMMUNITY MENTAL HEALTH CENTER	1	CarePlus	Care	Care	Primary Care	201408	3	2	\$157.62	\$157.62	\$225.00
LC24	AMBULATORY SURGICAL CENTER	5	CommCare	Care	Care	Specialist	201401	15	8	\$1,762.06	\$1,762.06	\$9,949.00
LC11	PROVIDERS OFFICE	1	CommCare	Care	CommCare	Primary Care	201410	13	10	\$710.38	\$675.38	\$1,879.00
LC11	PROVIDERS OFFICE	5	CommChoice	CommChoice	CommChoice	Specialist	201310	26	19	\$2,885.23	\$2,342.17	\$7,215.00
LC22	OUTPATIENT HOSPITAL	1	CarePlus	CarePlus	Primary Care	201408	12	11	\$613.77	\$613.77	\$2,119.00	
LC50	FEDERALLY QUALIFIED HEALTH CENTER	5	CommCare	Care	Care	Primary Care	201304	65	48	\$6,339.20	\$6,239.20	\$8,459.30
LC11	PROVIDERS OFFICE	5	CommChoice	CommChoice	CommChoice	Primary Care	201404	24	14	\$2,302.66	\$1,631.35	\$4,426.10
LC11	PROVIDERS OFFICE	5	CommCare	Care	Care	Primary Care	201405	1,569	1,108	\$128,029.73	\$120,403.95	\$239,769.35
LC22	OUTPATIENT HOSPITAL	5	CommCare	Care	Care	Specialist	201311	1,638	1,215	\$129,185.56	\$126,322.40	\$564,662.75
LC11	PROVIDERS OFFICE	5	MA - MP - SHOP	Ambetter	Ambetter	Specialist	201411	2	1	\$106.35	\$56.35	\$275.58
LC22	OUTPATIENT HOSPITAL	1	Care	Care	Primary Care	201406	1	1	\$44.99	\$44.99	\$134.00	
LC11	PROVIDERS OFFICE	1	CommBridge	Bridge	Bridge	Primary Care	201412	1	1	\$53.59	\$53.59	\$250.00
LC22	OUTPATIENT HOSPITAL	5	CommCare	Care	Care	Specialist	201411	727	527	\$40,120.70	\$38,601.14	\$167,565.01
LC22	OUTPATIENT HOSPITAL	5	CarePlus	CarePlus	CarePlus	Specialist	201402	2,822	2,158	\$164,806.20	\$163,662.42	\$821,725.59
LC11	PROVIDERS OFFICE	1	CommChoice	CommChoice	CommChoice	Primary Care	201302	1	1	\$95.06	\$65.06	\$199.00
LC11	PROVIDERS OFFICE	1	CarePlus	Care	Care	Primary Care	201411	33	11	\$948.21	\$948.21	\$1,338.60
LC22	OUTPATIENT HOSPITAL	5	CarePlus	CarePlus	Specialist	201405	8	6	\$473.08	\$473.08	\$3,266.02	
LC53	COMMUNITY MENTAL HEALTH CENTER	1	CommCare	Care	Care	Primary Care	201410	7	7	\$400.24	\$400.24	\$585.00
LC11	PROVIDERS OFFICE	1	CommChoice	CommChoice	CommChoice	Primary Care	201310	3	3	\$163.35	\$63.54	\$500.00
LC11	PROVIDERS OFFICE	1	CommCare	Bridge	Bridge	Primary Care	201312	3	3	\$157.62	\$157.62	\$480.00
LC11	PROVIDERS OFFICE	5	CommChoice	CommChoice	CommChoice	Primary Care	201408	6	5	\$557.70	\$459.25	\$687.00
LC11	PROVIDERS OFFICE	5	MA - MP - SHOP	Ambetter	Ambetter	Specialist	201408	1	1	\$80.18	\$35.22	\$145.00
LC11	PROVIDERS OFFICE	5	MA - MP - SHOP	Ambetter	Ambetter	Primary Care	201406	3	3	\$314.14	\$146.38	\$1,110.00
LC11	PROVIDERS OFFICE	5	MA - MP - SHOP	Ambetter	Ambetter	Specialist	201411	2	1	\$52.04	\$52.04	\$90.00
LC11	PROVIDERS OFFICE	1	Care	Care	Primary Care	201401	2	2	\$105.08	\$85.08	\$160.00	
LC11	PROVIDERS OFFICE	5	CommCare	Care	Care	Specialist	201403	1,428	885	\$107,338.99	\$97,039.10	\$311,732.01
LC11	PROVIDERS OFFICE	5	CommCare	Care	Care	Specialist	201306	3,467	2,167	\$295,618.91	\$278,265.47	\$815,058.34
LC50	FEDERALLY QUALIFIED HEALTH CENTER	5	CommCare	Care	Care	Specialist	201308	2	1	\$40.56	\$22.20	\$118.00
LC11	PROVIDERS OFFICE	5		CommChoice	CommChoice	Primary Care	201401	2	2	\$261.01	\$98.25	\$394.00
LC22	OUTPATIENT HOSPITAL	5	CarePlus	CarePlus	CarePlus	Specialist	201401	5,885	4,699	\$356,302.23	\$349,235.49	\$1,798,914.20

LC53	COMMUNITY MENTAL HEALTH CENTER	1 CarePlus	CarePlus	CarePlus	Primary Care	201402	74	70	\$5,304.26	\$5,304.26	\$8,991.00
------	--------------------------------	------------	----------	----------	--------------	--------	----	----	------------	------------	------------

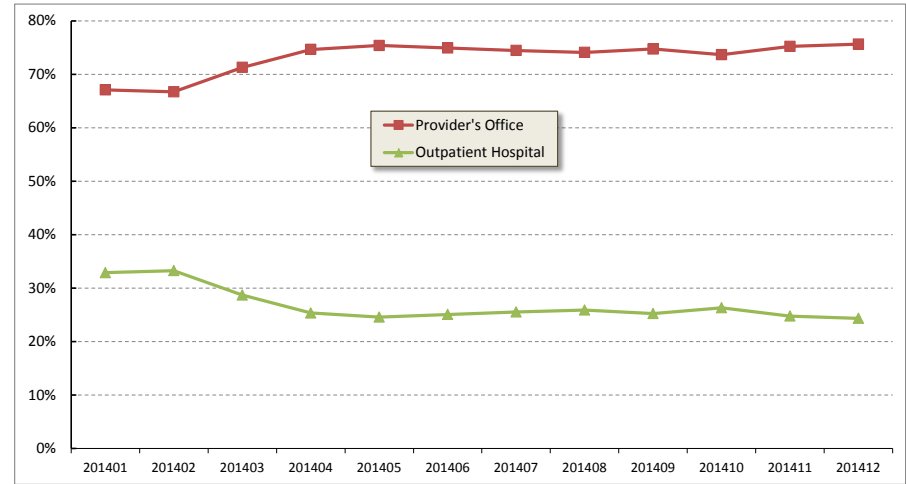
Commonwealth Care Members

Service Month	Claim Count		Total Allowed Amount		Claim Count		Avg -1 StDev (2013)	Avg +1 StDev (2013)	LC11 Provider's Office	LC22 Outpatient Hospital
	LC11 Provider's Office	LC22 Outpatient Hospital	LC11 Provider's Office	LC22 Outpatient Hospital	LC11 Provider's Office	LC22 Outpatient Hospital				
	201301	7,058	2,862	\$807,236.90	\$287,611.33	71.1%				
201302	5,445	2,537	\$658,866.35	\$255,954.54	68.2%	31.8%	69.4%	74.8%	\$121.00	\$100.89
201303	5,935	2,648	\$706,461.42	\$261,201.95	69.1%	30.9%	69.4%	74.8%	\$119.03	\$98.64
201304	5,870	2,632	\$695,103.12	\$267,141.31	69.0%	31.0%	69.4%	74.8%	\$118.42	\$101.50
201305	5,853	2,491	\$721,221.22	\$258,284.49	70.1%	29.9%	69.4%	74.8%	\$123.22	\$103.69
201306	4,961	2,144	\$601,253.91	\$209,648.83	69.8%	30.2%	69.4%	74.8%	\$121.20	\$97.78
201307	4,126	1,403	\$462,850.44	\$135,800.68	74.6%	25.4%	69.4%	74.8%	\$112.18	\$96.79
201308	4,067	1,442	\$454,913.37	\$125,149.15	73.8%	26.2%	69.4%	74.8%	\$111.85	\$86.79
201309	4,199	1,418	\$470,866.05	\$129,924.43	74.8%	25.2%	69.4%	74.8%	\$112.14	\$91.63
201310	4,871	1,572	\$542,501.68	\$139,218.79	75.6%	24.4%	69.4%	74.8%	\$111.37	\$88.56
201311	4,050	1,387	\$461,134.75	\$144,070.72	74.5%	25.5%	69.4%	74.8%	\$113.86	\$103.87
201312	4,042	1,411	\$484,393.98	\$126,653.84	74.1%	25.9%	69.4%	74.8%	\$119.84	\$89.76
201401	2,463	786	\$279,806.52	\$61,360.65	75.8%	24.2%	69.4%	74.8%	\$113.60	\$78.07
201402	2,088	734	\$240,711.13	\$56,693.80	74.0%	26.0%	69.4%	74.8%	\$115.28	\$77.24
201403	2,427	821	\$271,926.79	\$71,362.02	74.7%	25.3%	69.4%	74.8%	\$112.04	\$86.92
201404	2,326	872	\$255,861.04	\$69,364.29	72.7%	27.3%	69.4%	74.8%	\$110.00	\$79.55
201405	2,121	788	\$234,540.01	\$64,053.93	72.9%	27.1%	69.4%	74.8%	\$110.58	\$81.29
201406	2,161	761	\$237,072.36	\$61,562.68	74.0%	26.0%	69.4%	74.8%	\$109.70	\$80.90
201407	1,920	731	\$208,766.33	\$61,444.64	72.4%	27.6%	69.4%	74.8%	\$108.73	\$84.06
201408	1,710	607	\$190,060.06	\$50,424.65	73.8%	26.2%	69.4%	74.8%	\$111.15	\$83.07
201409	1,941	689	\$219,608.63	\$51,701.17	73.8%	26.2%	69.4%	74.8%	\$113.14	\$75.04
201410	2,021	712	\$228,863.11	\$53,792.21	73.9%	26.1%	69.4%	74.8%	\$113.24	\$75.55
201411	1,671	637	\$183,138.38	\$49,793.50	72.4%	27.6%	69.4%	74.8%	\$109.60	\$78.17
201412	1,726	705	\$185,715.83	\$58,630.62	71.0%	29.0%	69.4%	74.8%	\$107.60	\$83.16
Average										
		2013			72.1%	27.9%				
		2014			73.5%	26.5%				
Std Dev										
		2013			2.7%	2.7%				
		2014			1.2%	1.2%				
2014 Z-score					0.5068					

Share of Physician Claims by Place of Service



Service Month	Claim Count		Total Allowed Amount		Claim Count			
	LC11	LC22	LC11	LC22	LC11	LC22	LC11	LC22
	Provider's Office	Outpatient Hospital	Provider's Office	Outpatient Hospital	Provider's Office	Outpatient Hospital	Provider's Office	Outpatient Hospital
201401	12,875	6,313	\$1,289,193.46	\$481,412.04	67.1%	32.9%	\$100.13	\$76.26
201402	5,767	2,877	\$596,878.20	\$220,077.83	66.7%	33.3%	\$103.50	\$76.50
201403	7,242	2,917	\$753,359.00	\$212,807.02	71.3%	28.7%	\$104.03	\$72.95
201404	7,980	2,710	\$795,292.19	\$201,352.60	74.6%	25.4%	\$99.66	\$74.30
201405	7,682	2,507	\$746,776.91	\$193,225.80	75.4%	24.6%	\$97.21	\$77.07
201406	6,906	2,311	\$654,788.07	\$173,123.33	74.9%	25.1%	\$94.81	\$74.91
201407	6,554	2,247	\$605,677.95	\$174,259.48	74.5%	25.5%	\$92.41	\$77.55
201408	5,685	1,989	\$544,660.85	\$141,146.61	74.1%	25.9%	\$95.81	\$70.96
201409	5,967	2,017	\$595,770.21	\$155,047.23	74.7%	25.3%	\$99.84	\$76.87
201410	6,196	2,215	\$598,460.41	\$175,592.03	73.7%	26.3%	\$96.59	\$79.27
201411	5,480	1,805	\$494,473.76	\$131,603.76	75.2%	24.8%	\$90.23	\$72.91
201412	6,366	2,051	\$573,593.27	\$161,239.95	75.6%	24.4%	\$90.10	\$78.62



Share in Provider Office
Setting

	2013	2014
Commonwealth Care	72.1%	73.5%
CarePlus		73.2%

Count of Claims

	2013	2014
Commonwealth Care	84,424	33,418
CarePlus		116,659

234,501