



# **A Report on 2016 Corporate Excise Returns**

**Commonwealth of  
Massachusetts  
Department of Revenue**  
Office of Tax Policy Analysis

**Christopher C. Harding**  
Commissioner of Revenue

---

**December 2019**

# Table of Contents

<b>EXECUTIVE SUMMARY.....</b>	<b>4</b>
<b>Table S1: 2016 Corporate Excise Returns by Industry.....</b>	<b>6</b>
<b>Table S2: 2014, 2015 and 2016 Corporate Excise Returns.....</b>	<b>7</b>
<b>Table S3: 2016 Corporate Disclosure Schedule by Industry.....</b>	<b>8</b>
<b>TABLE SECTION.....</b>	<b>9</b>
<b>Table 1: 2016 Corporate Excise Returns by Industry. ....</b>	<b>10</b>
<b>Table 2: 2016 Corporate Excise Returns by Industry and Gross Receipts.....</b>	<b>11</b>
All Industries.....	12
Agriculture, Forestry, Fishing and Hunting.....	13
Mining, Quarrying, and Oil and Gas Extraction.....	14
Construction.....	15
Manufacturing.....	16
Utility, Transportation and Warehousing .....	17
Wholesale Trade.....	18
Retail Trade.....	19
Information.....	20
Finance, Insurance and Real Estate.....	21
Services.....	22
Other and Undefined.....	23
<b>Table 3: 2016 Corporate Excise Returns by Industry and Excise Due .....</b>	<b>24</b>
All Industries.....	25
Agriculture, Forestry, Fishing and Hunting.....	26
Mining, Quarrying, and Oil and Gas Extraction.....	27
Construction.....	28
Manufacturing.....	29
Utility, Transportation and Warehousing.....	30
Wholesale Trade.....	31
Retail Trade.....	32
Information.....	33
Finance, Insurance and Real Estate.....	34
Services.....	35
Other and Undefined.....	36

<b>Table 4: 2016 Corporate Excise Returns by Industry and Massachusetts Taxable Income</b>	37
All Industries	38
Agriculture, Forestry, Fishing and Hunting	39
Mining, Quarrying, and Oil and Gas Extraction	40
Construction	41
Manufacturing	42
Utility, Transportation and Warehousing	43
Wholesale Trade	44
Retail Trade	45
Information	46
Finance, Insurance and Real Estate	47
Services	48
Other and Undefined	49
<b>Table 5: 2016 Financial Institution Excise Returns by Federal Net Income</b>	50
<b>Table 6: 2016 Public Service Company and Urban Redevelopment Organization Excise Returns</b>	51
<b>Table 7: 2016 Insurance Company Excise Returns</b>	52
<b>Footnotes to Tables</b>	53
<b>APPENDICES</b>	55
<b>Appendix A: The Corporate Excise</b>	56
Description of Massachusetts Business Corporation Excise	56
Form 355U: Flowchart of Schedule Information	59
Chart A-1: Computation of Massachusetts Business Corporation Excise	60
<b>Appendix B: The Financial Institution Excise</b>	61
Description of Massachusetts Financial Institution Excise	61
Chart B-1: Computation of the Financial Institution Excise	62
<b>Appendix C: The Public Service Excise</b>	63
Description of Massachusetts Public Service Company Excise	63
Chart C-1: Computation of the Massachusetts Public Service Organization Excises	65
<b>Appendix D: The Insurance Company Excise</b>	66
Description of Massachusetts Insurance Excise	66
Chart D-1: Summary of 2016 Tax Forms for Insurance Companies	69

## Executive Summary

This aggregate statistical report of taxes collected from corporations and certain other businesses fulfills the requirements of Section 82 of Chapter 62C of the General Laws, as established by Chapter 402 of the Acts of 1992.

### *Contents of the Report*

The report provides summary information on the tax owed, income, and use of credits, deductions, exemptions, and exclusions by corporations doing business in the Commonwealth. The statistical tables cover each type of corporation subject to the Massachusetts corporate excise under M.G.L. Chapter 63, including business corporations, financial institutions, insurance companies, and public utilities. Information for the report is drawn from tax returns filed with the Department of Revenue for tax year 2016; as provided by section 82, information not reported on Massachusetts tax returns for tax year 2016 is not included in this report.

The tables in this report present consolidated total amounts by industry and by the amount of Gross receipts, Massachusetts taxable income, and corporate excise due. In all cases, both the number of corporations reporting and the total dollar amount of a line item are given. Additional information about the structure of the business, corporation, financial institution, insurance company, and public utility excises is provided in an appendix at the end of this report.

To the extent that data were available, the tables report some deductions, exemptions, and exclusions allowed under Massachusetts General Law for tax year 2016.

Industry group detail tables are provided for business corporation line item data, since corporations from many different industry groups are required to file such returns. The data presented in the tables reflect information as filed by the corporate taxpayers and have not been adjusted for subsequent audit or enforcement activity by the Department.

### *Missing or Not Applicable Data*

The tables in this report are based upon line item information from taxpayers' returns which may have missing information or which may be inapplicable to some detail subcategories presented in the table. In all cases, the aggregate amounts reported include all available information for a line item, subject to restrictions to preserve the confidentiality of taxpayer data. An example of missing data: some returns lacked North American Industry Classification (NAICS) codes. Therefore, information for those returns is reported in the "Missing or Not Applicable Data" columns of the industry group detail tables. An example of data not applicable: the line item for Income Subject to Apportionment is not present for corporations filing as Small Business Corporations. These corporations are required to have all their income derived from Massachusetts activity, so there is no apportionment involved.

### *Confidentiality of Taxpayer Data*

The results presented in the tables comply with the Commonwealth's laws regarding the confidentiality of taxpayer data, including the relevant provisions of section 82, and the rules for implementing those laws. These rules disallow the reporting of line item information for an individual corporation; therefore, when the data upon which this report is based pertain to fewer than three corporations, no dollar amount has been disclosed.

## **Major changes from the 2015 Report**

The statistics in this report reflect the following major significant tax law changes from 2015 that affected 2016 corporate excise collections.

### **1. Community Investment Tax Credit**

Effective August 10, 2016, the community investment tax credit has been modified. A community partner may now claim a subsequent community investment tax credit if the Department of Housing and Community Development determines that the community partner has made satisfactory progress towards utilizing any prior allocation it has received. For further information, see TIR 16-15.

### **2. Historic Rehabilitation Tax Credit**

Effective August 10, 2016, the historic rehabilitation tax credit has been modified to allow the Massachusetts Historical Commission to, subject to certain criteria, transfer the historic rehabilitation tax credit to corporate excise taxpayers that acquire a qualified historic structure. For multi-phased projects, the Massachusetts Historical Commission may transfer historic rehabilitation tax credit awards for any phase that meets the criteria. For further information, see TIR 16-15.

Table S1: Business Corporations--All Industries / 2016

		Category of Industries											
		Agriculture, Forestry, Fishing and Hunting	Mining, Quarrying, and Oil and Gas Extraction	Construction	Manufacturing	Utility, Transportati- on and Warehousing	Wholesale Trade	Retail Trade	Information	Finance, Insurance and Real Estate	Services	Other and Undefined	All Corporations
Mass. Taxable	Count	224	38	4,347	3,708	1,295	3,084	3,086	875	5,257	12,307	250	34,471
Income	Sum(\$,000)	212,849	306,438	1,861,366	5,377,946	825,270	2,899,068	2,921,237	1,865,530	7,969,936	3,642,304	86,561	27,968,506
Non Income	Count	799	108	12,442	8,030	2,856	5,968	12,649	2,307	12,771	41,910	271	100,111
Excise	Sum(\$,000)	2,644	3,448	15,344	111,083	16,770	44,276	44,103	36,606	86,109	66,382	3,250	430,014
Income Excise	Count	191	37	4,014	3,624	1,194	3,019	2,892	839	5,022	11,422	228	32,482
	Sum(\$,000)	14,402	22,611	86,908	358,854	59,818	177,710	188,265	142,255	502,563	197,049	3,817	1,754,251
Excise Due	Count	1,312	183	21,455	10,653	6,195	8,356	16,103	4,183	25,736	69,652	844	164,672
	Sum(\$,000)	5,296	25,268	105,408	316,919	77,518	206,518	214,929	159,853	544,955	249,837	6,197	1,912,698
Exem. Prop.	Count	683	65	9,978	4,063	2,487	2,730	6,755	671	8,346	21,602	108	57,488
Sub. Lo Tax	Sum(\$,000)	1,581,509	154,904	2,801,678	8,332,401	22,124,770	5,198,865	9,026,234	2,580,371	70,494,838	9,547,268	137,580	131,980,417
Econ. Dev.	Count	0	0	**	22	0	4	4	0	0	**	0	35
Inc. Pgm Cr	Sum(\$,000)	.	.	**	1,996	.	971	552	.	.	**	.	3,758
Econ. Opp.	Count	**	0	**	30	**	7	5	**	**	4	0	54
Area Credit	Sum(\$,000)	**	.	**	6,677	**	2,245	1,349	**	**	212	.	10,763
Renovation	Count	0	0	**	**	0	**	**	0	0	3	0	8
Deduction	Sum(\$,000)	.	.	**	**	.	**	**	.	.	0	.	9
Investment	Count	34	11	25	1,195	7	82	16	47	26	208	6	1,657
Tax Credit	Sum(\$,000)	2,676	631	525	29,665	372	2,434	348	668	2,455	4,160	259	44,192
Vanpool	Count	0	0	0	0	0	0	0	0	0	0	0	0
Credit	Sum(\$,000)	.	.	.	.	.	.	.	.	.	.	.	.
Research	Count	5	**	58	840	10	101	38	166	65	913	**	2,199
Credit	Sum(\$,000)	7,864	**	1,844	77,211	533	8,466	1,848	20,832	7,162	27,420	**	154,010
Harbor Maint.	Count	0	0	**	20	0	45	8	**	**	**	0	78
Credit	Sum(\$,000)	.	.	**	177	.	681	215	**	**	**	.	1,093
Brownfields	Count	0	0	**	**	3	3	0	0	**	0	0	9
Credit	Sum(\$,000)	.	.	**	**	396	84	.	.	**	.	.	861
Low Income	Count	0	0	0	**	0	0	**	0	10	0	0	13
Hou. Credit	Sum(\$,000)	.	.	.	**	.	.	**	.	18,095	.	.	20,647
Historic	Count	0	0	0	**	0	5	**	0	5	0	0	13
Rehab. Credit	Sum(\$,000)	.	.	.	**	.	687	**	.	3,367	.	.	11,510
Community	Count	0	0	**	0	0	0	0	0	**	0	0	11
Inv. Credit	Sum(\$,000)	.	.	**	.	.	.	.	.	**	.	.	243
Housing Dev.	Count	0	0	0	**	0	**	0	0	0	0	0	3
Credit	Sum(\$,000)	.	.	.	**	.	**	.	.	.	.	.	108
Film Incent.	Count	0	0	0	**	**	4	3	**	3	**	0	16
Credit	Sum(\$,000)	.	.	.	**	**	491	5,697	**	7,017	**	.	14,243
Medical	Count	0	0	0	**	0	**	0	0	0	0	0	4
Device Credit	Sum(\$,000)	.	.	.	**	.	**	.	.	.	.	.	749
Wellness Pgm	Count	0	0	**	6	0	**	**	**	**	8	0	21
Credit	Sum(\$,000)	.	.	**	43	.	**	**	**	**	44	.	151
Life Sci.	Count	0	0	0	3	0	0	0	0	0	3	0	6
Credit	Sum(\$,000)	.	.	.	802	.	.	.	.	.	33	.	835
Credits	Count	**	0	6	137	**	26	6	23	18	41	**	263
Shared	Sum(\$,000)	**	.	152	42,349	**	2,246	2,189	3,930	15,000	6,513	**	74,955
Total Refund.	Count	8	0	9	10	**	3	4	3	27	30	**	97
Credit	Sum(\$,000)	489	.	99	5,749	**	7,768	727	72	1,439	7,250	**	23,616

**Table S2: Corporate Excise Returns for 2014, 2015 and 2016**

	2014	2015	Amount Difference	Percent Difference	2016	Amount Difference	Percent Difference
<b>Number of All Returns</b>	<b>163,426</b>	<b>167,341</b>	<b>3,915</b>	<b>2.4%</b>	<b>170,381</b>	<b>3,040</b>	<b>1.8%</b>
<b>Massachusetts Taxable Income</b>							
Number	31,748	35,154	3,406	10.7%	34,471	-683	-1.9%
Amount (\$000s)	25,344,582	29,309,777	3,965,195	15.6%	27,968,506	-1,341,271	-4.6%
<b>Non-income Excise</b>							
Number	97,424	98,604	1,180	1.2%	100,111	1,507	1.5%
Amount (\$000s)	392,749	417,910	25,161	6.4%	430,014	12,104	2.9%
<b>Income Excise</b>							
Number	30,758	32,565	1,807	5.9%	32,482	-83	-0.3%
Amount (\$000s)	1,706,059	1,848,537	142,478	8.4%	1,754,251	-94,286	-5.1%
<b>Excise Due</b>							
Number	157,480	161,598	4,118	2.6%	164,672	3,074	1.9%
Amount (\$000s)	1,809,546	1,989,659	180,113	10.0%	1,912,698	-76,961	-3.9%
<b>Exemption for Property Subject to Local Taxation</b>							
Number	56,306	56,545	239	0.4%	57,488	943	1.7%
Amount (\$000s)	106,731,175	125,772,342	19,041,167	17.8%	131,980,417	6,208,075	4.9%
<b>Economic Development Incentive Program Credit</b>							
Number	19	39	20	105.3%	35	-4	-10.3%
Amount (\$000s)	1,838	4,705	2,867	156.0%	3,758	-947	-20.1%
<b>Economic Opportunity Area Credit</b>							
Number	95	82	-13	-13.7%	54	-28	-34.1%
Amount (\$000s)	7,781	7,494	-287	-3.7%	10,763	3,269	43.6%
<b>Renovation Deduction</b>							
Number	3	**	NA	NA	8	NA	NA
Amount (\$000s)	44	**	NA	NA	9	NA	NA
<b>Investment Tax Credit</b>							
Number	1,789	1,694	-95	-5.3%	1,657	-37	-2.2%
Amount (\$000s)	59,559	46,262	-13,297	-22.3%	44,192	-2,070	-4.5%
<b>Vanpool Credit</b>							
Number	**	..	NA	NA	..	NA	NA
Amount (\$000s)	**	..	NA	NA	..	NA	NA
<b>Research Credit</b>							
Number	1,697	1,928	231	13.6%	2,199	271	14.1%
Amount (\$000s)	191,430	148,849	-42,581	-22.2%	154,010	5,161	3.5%
<b>Harbor Maintenance Credit</b>							
Number	70	77	7	10.0%	78	1	1.3%
Amount (\$000s)	945	1,159	214	22.6%	1,093	-66	-5.7%
<b>Brownfields Credit</b>							
Number	15	12	-3	-20.0%	9	-3	-25.0%
Amount (\$000s)	17,855	2,083	-15,772	-88.3%	861	-1,222	-58.7%
<b>Low Income Housing Credit</b>							
Number	10	9	-1	-10.0%	13	4	44.4%
Amount (\$000s)	38,471	18,110	-20,361	-52.9%	20,647	2,537	14.0%
<b>Historic Rehab. Credit</b>							
Number	14	13	-1	-7.1%	13	0	0.0%
Amount (\$000s)	12,901	11,442	-1,459	-11.3%	11,510	68	0.6%
<b>Film Incentive Credit</b>							
Number	20	13	-7	-35.0%	16	3	23.1%
Amount (\$000s)	25,144	15,364	-9,780	-38.9%	14,243	-1,121	-7.3%
<b>Medical Device Credit</b>							
Number	**	**	NA	NA	4	NA	NA
Amount (\$000s)	**	**	NA	NA	479	NA	NA
<b>Employer Wellness Program Credit</b>							
Number	12	18	6	50.0%	21	3	16.7%
Amount (\$000s)	85	128	43	50.6%	151	23	18.0%
<b>Life Science Credits*</b>							
Number	7	14	7	100.0%	6	-8	-57.1%
Amount (\$000s)	1,360	1,431	71	5.2%	835	-596	-41.6%
<b>Community Investment Credit</b>							
Number	NA	21	NA	NA	11	-10	-47.6%
Amount (\$000s)	NA	311	NA	NA	243	-68	-21.9%
<b>Housing Development Credit</b>							
Number	NA	4	NA	NA	3	-1	-25.0%
Amount (\$000s)	NA	342	NA	NA	108	-234	-68.4%
<b>Credits Shared</b>							
Number	210	237	27	12.9%	263	26	11.0%
Amount (\$000s)	71,342	73,941	2,599	3.6%	74,955	1,014	1.4%
<b>Total Refundable Credits</b>							
Number	85	88	3	3.5%	97	9	10.2%
Amount (\$000s)	15,093	20,593	5,500	36.4%	23,616	3,023	14.7%

See footnotes after Table 7

**Table S3: 2016 Corporate Disclosure Schedule by Industry**

**Not Available**



## Table Section

Table 1: Business Corporations--All Industries / 2016

Category of Industries													
		Agriculture, Forestry, Fishing and Hunting	Mining, Quarrying, and Oil and Gas Extraction	Construction	Manufacturing	Utility, Transportati- on and Warehousing	Wholesale Trade	Retail Trade	Information	Finance, Insurance and Real Estate	Services	Other and Undefined	All Corporations
Mass. Taxable	Count	224	38	4,347	3,708	1,295	3,084	3,086	875	5,257	12,307	250	34,471
Income	Sum(\$,000)	212,849	306,438	1,861,366	5,377,946	825,270	2,899,068	2,921,237	1,865,530	7,969,936	3,642,304	86,561	27,968,506
Non Income	Count	799	108	12,442	8,030	2,856	5,968	12,649	2,307	12,771	41,910	271	100,111
Excise	Sum(\$,000)	2,644	3,448	15,344	111,083	16,770	44,276	44,103	36,606	86,109	66,382	3,250	430,014
Income Excise	Count	191	37	4,014	3,624	1,194	3,019	2,892	839	5,022	11,422	228	32,482
	Sum(\$,000)	14,402	22,611	86,908	358,854	59,818	177,710	188,265	142,255	502,563	197,049	3,817	1,754,251
Excise Due	Count	1,312	183	21,455	10,653	6,195	8,356	16,103	4,183	25,736	69,652	844	164,672
	Sum(\$,000)	5,296	25,268	105,408	316,919	77,518	206,518	214,929	159,853	544,955	249,837	6,197	1,912,698
Exem. Prop.	Count	683	65	9,978	4,063	2,487	2,730	6,755	671	8,346	21,602	108	57,488
Sub. Lo Tax	Sum(\$,000)	1,581,509	154,904	2,801,678	8,332,401	22,124,770	5,198,865	9,026,234	2,580,371	70,494,838	9,547,268	137,580	131,980,417
Econ. Dev.	Count	0	0	**	22	0	4	4	0	0	**	0	35
Inc. Pgm Cr	Sum(\$,000)	.	.	**	1,996	.	971	552	.	.	**	.	3,758
Econ. Opp.	Count	**	0	**	30	**	7	5	**	**	4	0	54
Area Credit	Sum(\$,000)	**	.	**	6,677	**	2,245	1,349	**	**	212	.	10,763
Renovation	Count	0	0	**	**	0	**	**	0	0	3	0	8
Deduction	Sum(\$,000)	.	.	**	**	.	**	**	.	.	0	.	9
Investment	Count	34	11	25	1,195	7	82	16	47	26	208	6	1,657
Tax Credit	Sum(\$,000)	2,676	631	525	29,665	372	2,434	348	668	2,455	4,160	259	44,192
Vanpool	Count	0	0	0	0	0	0	0	0	0	0	0	0
Credit	Sum(\$,000)	.	.	.	.	.	.	.	.	.	.	.	.
Research	Count	5	**	58	840	10	101	38	166	65	913	**	2,199
Credit	Sum(\$,000)	7,864	**	1,844	77,211	533	8,466	1,848	20,832	7,162	27,420	**	154,010
Harbor Maint.	Count	0	0	**	20	0	45	8	**	**	**	0	78
Credit	Sum(\$,000)	.	.	**	177	.	681	215	**	**	**	.	1,093
Brownfields	Count	0	0	**	**	3	3	0	0	**	0	0	9
Credit	Sum(\$,000)	.	.	**	**	396	84	.	.	**	.	.	861
Low Income	Count	0	0	0	**	0	0	**	0	10	0	0	13
Hou. Credit	Sum(\$,000)	.	.	.	**	.	.	**	.	18,095	.	.	20,647
Historic	Count	0	0	0	**	0	5	**	0	5	0	0	13
Rehab. Credit	Sum(\$,000)	.	.	.	**	.	687	**	.	3,367	.	.	11,510
Community	Count	0	0	**	0	0	0	0	0	**	0	0	11
Inv. Credit	Sum(\$,000)	.	.	**	.	.	.	.	.	**	.	.	243
Housing Dev.	Count	0	0	0	**	0	**	0	0	0	0	0	3
Credit	Sum(\$,000)	.	.	.	**	.	**	.	.	.	.	.	108
Film Incent.	Count	0	0	0	**	**	4	3	**	3	**	0	16
Credit	Sum(\$,000)	.	.	.	**	**	491	5,697	**	7,017	**	.	14,243
Medical	Count	0	0	0	**	0	**	0	0	0	0	0	4
Device Credit	Sum(\$,000)	.	.	.	**	.	**	.	.	.	.	.	749
Wellness Pgm	Count	0	0	**	6	0	**	**	**	**	8	0	21
Credit	Sum(\$,000)	.	.	**	43	.	**	**	**	**	44	.	151
Life Sci.	Count	0	0	0	3	0	0	0	0	0	3	0	6
Credit	Sum(\$,000)	.	.	.	802	.	.	.	.	.	33	.	835
Credits	Count	**	0	6	137	**	26	6	23	18	41	**	263
Shared	Sum(\$,000)	**	.	152	42,349	**	2,246	2,189	3,930	15,000	6,513	**	74,955
Total Refund.	Count	8	0	9	10	**	3	4	3	27	30	**	97
Credit	Sum(\$,000)	489	.	99	5,749	**	7,768	727	72	1,439	7,250	**	23,616

SOURCE: Massachusetts Department of Revenue

**Table 2:  
2016 Corporate Excise Returns  
by Industry  
and  
Gross Receipts**

**Table 2**  
**2016 Corporate Excise Returns by Industry and Gross Receipts**  
**Business Corporations--All Industries**

		Range of Gross Receipts									Total
		Missing, Less or Equal to Zero	Up to \$100K	\$100K to \$1M	\$1M to \$10M	\$10M to \$25M	\$25M to \$50M	\$50M to \$100M	\$100M to \$500M	\$500M or More	
Mass. Taxable	Count	4,467	2,671	6,965	8,201	4,345	2,272	1,676	2,202	1,672	34,471
Income	Sum (\$,000)	5,033,781	88,566	250,880	1,749,937	2,003,670	1,191,165	1,350,945	2,355,244	13,944,318	27,968,506
Non Income	Count	62,596	3,214	9,887	10,050	4,625	2,540	2,003	2,964	2,232	100,111
Excise	Sum (\$,000)	58,528	2,257	5,994	16,551	17,041	16,604	17,038	42,752	253,248	430,014
Income Excise	Count	3,423	2,518	6,517	7,927	4,312	2,253	1,671	2,190	1,671	32,482
	Sum (\$,000)	288,068	3,982	15,434	68,854	78,945	49,854	61,495	134,986	1,052,632	1,754,251
Excise Due	Count	107,776	7,158	14,928	14,933	7,036	3,780	2,781	3,770	2,510	164,672
	Sum (\$,000)	359,034	8,334	23,800	81,012	88,289	59,349	69,880	155,152	1,067,847	1,912,698
Exem. Prop.	Count	38,368	1,342	5,810	6,410	2,272	907	697	830	852	57,488
Sub. Loc. Tax	Sum (\$,000)	32,835,839	577,547	7,443,884	10,355,277	4,297,602	2,005,664	4,854,266	8,543,652	61,066,687	131,980,417
Econ. Dev.	Count	3	0	0	3	4	4	3	7	11	35
Inc. Pgm Cr	Sum (\$,000)	71	.	.	20	68	105	130	233	3,131	3,758
Econ. Opp.	Count	5	0	**	**	13	3	5	5	19	54
Area Credit	Sum (\$,000)	66	.	**	**	121	334	266	1,157	8,810	10,763
Renovation	Count	**	0	**	0	0	0	0	0	0	8
Deduction	Sum (\$,000)	**	.	**	.	.	.	.	.	.	9
Investment	Count	336	5	43	382	312	126	121	143	189	1,657
Tax Credit	Sum (\$,000)	643	3	99	1,424	2,659	2,681	3,477	6,160	27,047	44,192
Vanpool	Count	0	0	0	0	0	0	0	0	0	0
Credit	Sum (\$,000)	.	.	.	.	.	.	.	.	.	.
Research	Count	359	62	148	446	343	186	154	202	299	2,199
Credit	Sum (\$,000)	3,065	300	1,113	5,800	5,655	4,674	4,106	15,267	114,029	154,010
Harbor Main.	Count	5	0	0	16	14	14	8	14	7	78
Credit	Sum (\$,000)	8	.	.	46	57	119	100	285	479	1,093
Brownfields	Count	**	0	0	0	**	0	**	**	4	9
Credit	Sum (\$,000)	**	.	.	.	**	.	**	**	737	861
Low Income	Count	10	0	0	0	0	0	0	0	3	13
Hou. Credit	Sum (\$,000)	18,095	.	.	.	.	.	.	.	2,552	20,647
Historic	Count	3	0	0	4	**	0	**	0	3	13
Rehab. Credit	Sum (\$,000)	2,846	.	.	485	**	.	**	.	7,463	11,510
Community	Count	8	0	0	0	0	**	**	0	0	11
Inv. Credit	Sum (\$,000)	157	.	.	.	.	**	**	.	.	243
Housing Dev.	Count	0	0	0	0	**	0	**	0	0	3
Credit	Sum (\$,000)	.	.	.	.	**	.	**	.	.	108
Film Incent.	Count	**	0	0	0	3	**	**	0	9	16
Credit	Sum (\$,000)	**	.	.	.	91	**	**	.	10,972	14,243
Medical	Count	0	0	0	0	0	0	0	0	4	4
Device Credit	Sum (\$,000)	.	.	.	.	.	.	.	.	749	749
Wellness Pgm	Count	**	0	**	4	8	**	6	0	0	21
Credit	Sum (\$,000)	**	.	**	27	45	**	60	.	.	151
Life Sci.	Count	3	0	**	0	**	0	0	0	**	6
Credit	Sum (\$,000)	33	.	**	.	**	.	.	.	**	835
Credits	Count	11	0	**	**	14	8	13	35	175	263
Shared	Sum (\$,000)	3,545	.	**	**	265	65	342	1,061	69,575	74,955
Total Refund.	Count	54	0	**	14	9	4	**	8	5	97
Credit	Sum (\$,000)	3,416	.	**	2,154	499	701	**	3,951	12,838	23,616

See footnotes after Table 7

**Table 2**  
**2016 Corporate Excise Returns by Industry and Gross Receipts**  
**Business Corporations--Agriculture, Forestry, Fishing and Hunting**

		Range of Gross Receipts									Total
		Missing, Less or Equal to Zero	Up to \$100K	\$100K to \$1M	\$1M to \$10M	\$10M to \$25M	\$25M to \$50M	\$50M to \$100M	\$100M to \$500M	\$500M or More	
Mass. Taxable	Count	31	23	64	50	21	9	12	5	9	224
Income	Sum (\$ ,000)	11,419	257	1,998	8,422	15,647	13,704	9,519	2,829	149,056	212,849
Non Income	Count	563	31	80	54	24	11	16	9	11	799
Excise	Sum (\$ ,000)	252	10	29	57	121	146	66	112	1,851	2,644
Income Excise	Count	21	22	49	43	21	9	12	5	9	191
	Sum (\$ ,000)	355	15	80	375	754	397	316	224	11,885	14,402
Excise Due	Count	967	60	120	73	34	18	17	12	11	1,312
	Sum (\$ ,000)	920	44	135	419	868	442	292	341	1,836	5,296
Exem. Prop.	Count	503	25	73	49	16	6	5	**	**	683
Sub. Loc. Tax	Sum (\$ ,000)	275,516	2,299	10,733	38,646	26,015	30,869	32,874	**	**	1,581,509
Econ. Dev.	Count	0	0	0	0	0	0	0	0	0	0
Inc. Pgm Cr	Sum (\$ ,000)	.	.	.	.	.	.	.	.	.	.
Econ. Opp.	Count	0	0	0	0	0	0	0	0	**	**
Area Credit	Sum (\$ ,000)	.	.	.	.	.	.	.	.	**	**
Renovation	Count	0	0	0	0	0	0	0	0	0	0
Deduction	Sum (\$ ,000)	.	.	.	.	.	.	.	.	.	.
Investment	Count	16	0	**	8	3	**	4	0	**	34
Tax Credit	Sum (\$ ,000)	9	.	**	24	15	**	92	.	**	2,676
Vanpool	Count	0	0	0	0	0	0	0	0	0	0
Credit	Sum (\$ ,000)	.	.	.	.	.	.	.	.	.	.
Research	Count	**	0	0	**	0	0	0	0	**	5
Credit	Sum (\$ ,000)	**	.	.	**	.	.	.	.	**	7,864
Harbor Main.	Count	0	0	0	0	0	0	0	0	0	0
Credit	Sum (\$ ,000)	.	.	.	.	.	.	.	.	.	.
Brownfields	Count	0	0	0	0	0	0	0	0	0	0
Credit	Sum (\$ ,000)	.	.	.	.	.	.	.	.	.	.
Low Income	Count	0	0	0	0	0	0	0	0	0	0
Hou. Credit	Sum (\$ ,000)	.	.	.	.	.	.	.	.	.	.
Historic	Count	0	0	0	0	0	0	0	0	0	0
Rehab. Credit	Sum (\$ ,000)	.	.	.	.	.	.	.	.	.	.
Community	Count	0	0	0	0	0	0	0	0	0	0
Inv. Credit	Sum (\$ ,000)	.	.	.	.	.	.	.	.	.	.
Housing Dev.	Count	0	0	0	0	0	0	0	0	0	0
Credit	Sum (\$ ,000)	.	.	.	.	.	.	.	.	.	.
Film Incent.	Count	0	0	0	0	0	0	0	0	0	0
Credit	Sum (\$ ,000)	.	.	.	.	.	.	.	.	.	.
Medical	Count	0	0	0	0	0	0	0	0	0	0
Device Credit	Sum (\$ ,000)	.	.	.	.	.	.	.	.	.	.
Wellness Pgm	Count	0	0	0	0	0	0	0	0	0	0
Credit	Sum (\$ ,000)	.	.	.	.	.	.	.	.	.	.
Life Sci.	Count	0	0	0	0	0	0	0	0	0	0
Credit	Sum (\$ ,000)	.	.	.	.	.	.	.	.	.	.
Credits	Count	0	0	0	0	0	0	0	0	**	**
Shared	Sum (\$ ,000)	.	.	.	.	.	.	.	.	**	**
Total Refund.	Count	5	0	**	**	**	0	0	0	0	8
Credit	Sum (\$ ,000)	321	.	**	**	**	.	.	.	.	489

See footnotes after Table 7

**Table 2**  
**2016 Corporate Excise Returns by Industry and Gross Receipts**  
**Business Corporations--Mining, Quarrying, and Oil and Gas Extraction**

		Range of Gross Receipts									Total
		Missing, Less or Equal to Zero	Up to \$100K	\$100K to \$1M	\$1M to \$10M	\$10M to \$25M	\$25M to \$50M	\$50M to \$100M	\$100M to \$500M	\$500M or More	
Mass. Taxable	Count	4	**	**	9	8	3	5	**	5	38
Income	Sum (\$,000)	3,693	**	**	8,701	7,388	7,496	15,165	**	263,840	306,438
Non Income	Count	60	**	**	9	7	3	5	5	13	108
Excise	Sum (\$,000)	59	**	**	49	39	66	100	15	3,118	3,448
Income Excise	Count	3	**	**	9	8	3	5	**	5	37
	Sum (\$,000)	299	**	**	209	214	328	441	**	21,107	22,611
Excise Due	Count	103	8	20	11	8	3	6	7	17	183
	Sum (\$,000)	423	5	13	258	239	394	309	28	23,601	25,268
Exem. Prop.	Count	38	0	4	7	5	3	3	0	5	65
Sub. Loc. Tax	Sum (\$,000)	17,288	.	548	8,241	30,139	22,056	21,184	.	55,448	154,904
Econ. Dev.	Count	0	0	0	0	0	0	0	0	0	0
Inc. Pgm Cr	Sum (\$,000)	.	.	.	.	.	.	.	.	.	.
Econ. Opp.	Count	0	0	0	0	0	0	0	0	0	0
Area Credit	Sum (\$,000)	.	.	.	.	.	.	.	.	.	.
Renovation	Count	0	0	0	0	0	0	0	0	0	0
Deduction	Sum (\$,000)	.	.	.	.	.	.	.	.	.	.
Investment	Count	**	0	0	0	**	**	3	0	3	11
Tax Credit	Sum (\$,000)	**	.	.	.	**	**	235	.	378	631
Vanpool	Count	0	0	0	0	0	0	0	0	0	0
Credit	Sum (\$,000)	.	.	.	.	.	.	.	.	.	.
Research	Count	0	0	0	0	0	0	0	0	**	**
Credit	Sum (\$,000)	.	.	.	.	.	.	.	.	**	**
Harbor Main.	Count	0	0	0	0	0	0	0	0	0	0
Credit	Sum (\$,000)	.	.	.	.	.	.	.	.	.	.
Brownfields	Count	0	0	0	0	0	0	0	0	0	0
Credit	Sum (\$,000)	.	.	.	.	.	.	.	.	.	.
Low Income	Count	0	0	0	0	0	0	0	0	0	0
Hou. Credit	Sum (\$,000)	.	.	.	.	.	.	.	.	.	.
Historic	Count	0	0	0	0	0	0	0	0	0	0
Rehab. Credit	Sum (\$,000)	.	.	.	.	.	.	.	.	.	.
Community	Count	0	0	0	0	0	0	0	0	0	0
Inv. Credit	Sum (\$,000)	.	.	.	.	.	.	.	.	.	.
Housing Dev.	Count	0	0	0	0	0	0	0	0	0	0
Credit	Sum (\$,000)	.	.	.	.	.	.	.	.	.	.
Film Incent.	Count	0	0	0	0	0	0	0	0	0	0
Credit	Sum (\$,000)	.	.	.	.	.	.	.	.	.	.
Medical	Count	0	0	0	0	0	0	0	0	0	0
Device Credit	Sum (\$,000)	.	.	.	.	.	.	.	.	.	.
Wellness Pgm	Count	0	0	0	0	0	0	0	0	0	0
Credit	Sum (\$,000)	.	.	.	.	.	.	.	.	.	.
Life Sci.	Count	0	0	0	0	0	0	0	0	0	0
Credit	Sum (\$,000)	.	.	.	.	.	.	.	.	.	.
Credits	Count	0	0	0	0	0	0	0	0	0	0
Shared	Sum (\$,000)	.	.	.	.	.	.	.	.	.	.
Total Refund.	Count	0	0	0	0	0	0	0	0	0	0
Credit	Sum (\$,000)	.	.	.	.	.	.	.	.	.	.

See footnotes after Table 7

**Table 2**  
**2016 Corporate Excise Returns by Industry and Gross Receipts**  
**Business Corporations--Construction**

		Range of Gross Receipts									Total
		Missing, Less or Equal to Zero	Up to \$100K	\$100K to \$1M	\$1M to \$10M	\$10M to \$25M	\$25M to \$50M	\$50M to \$100M	\$100M to \$500M	\$500M or More	
Mass. Taxable	Count	230	412	1,154	1,261	651	271	138	156	74	4,347
Income	Sum (\$ ,000)	10,004	3,888	26,593	191,312	324,111	169,629	202,406	303,844	629,579	1,861,366
Non Income	Count	8,066	340	1,362	1,397	628	265	129	169	86	12,442
Excise	Sum (\$ ,000)	2,295	48	312	1,460	1,862	1,175	919	1,951	5,322	15,344
Income Excise	Count	57	393	1,075	1,214	643	270	137	151	74	4,014
	Sum (\$ ,000)	385	293	1,822	7,518	10,887	6,063	7,653	9,860	42,426	86,908
Excise Due	Count	14,472	865	2,148	1,992	945	431	221	268	113	21,455
	Sum (\$ ,000)	8,051	613	2,621	9,270	12,706	7,052	8,412	11,284	45,399	105,408
Exem. Prop.	Count	6,795	213	1,058	1,149	442	126	79	75	41	9,978
Sub. Loc. Tax	Sum (\$ ,000)	823,874	7,003	52,253	300,252	345,992	185,740	144,043	287,715	654,807	2,801,678
Econ. Dev.	Count	0	0	0	0	0	0	0	0	**	**
Inc. Pgm Cr	Sum (\$ ,000)	.	.	.	.	.	.	.	.	**	**
Econ. Opp.	Count	0	0	**	0	0	0	0	0	**	**
Area Credit	Sum (\$ ,000)	.	.	**	.	.	.	.	.	**	**
Renovation	Count	**	0	0	0	0	0	0	0	0	**
Deduction	Sum (\$ ,000)	**	.	.	.	.	.	.	.	.	**
Investment	Count	5	0	**	4	5	**	3	**	4	25
Tax Credit	Sum (\$ ,000)	2	.	**	21	17	**	28	**	448	525
Vanpool	Count	0	0	0	0	0	0	0	0	0	0
Credit	Sum (\$ ,000)	.	.	.	.	.	.	.	.	.	.
Research	Count	4	0	0	4	14	14	5	10	7	58
Credit	Sum (\$ ,000)	2	.	.	8	221	285	50	601	678	1,844
Harbor Main.	Count	0	0	0	0	0	0	0	**	0	**
Credit	Sum (\$ ,000)	.	.	.	.	.	.	.	**	.	**
Brownfields	Count	0	0	0	0	0	0	0	0	**	**
Credit	Sum (\$ ,000)	.	.	.	.	.	.	.	.	**	**
Low Income	Count	0	0	0	0	0	0	0	0	0	0
Hou. Credit	Sum (\$ ,000)	.	.	.	.	.	.	.	.	.	.
Historic	Count	0	0	0	0	0	0	0	0	0	0
Rehab. Credit	Sum (\$ ,000)	.	.	.	.	.	.	.	.	.	.
Community	Count	0	0	0	0	0	**	**	0	0	**
Inv. Credit	Sum (\$ ,000)	.	.	.	.	.	**	**	.	.	**
Housing Dev.	Count	0	0	0	0	0	0	0	0	0	0
Credit	Sum (\$ ,000)	.	.	.	.	.	.	.	.	.	.
Film Incent.	Count	0	0	0	0	0	0	0	0	0	0
Credit	Sum (\$ ,000)	.	.	.	.	.	.	.	.	.	.
Medical	Count	0	0	0	0	0	0	0	0	0	0
Device Credit	Sum (\$ ,000)	.	.	.	.	.	.	.	.	.	.
Wellness Pgm	Count	0	0	0	0	0	0	**	0	0	**
Credit	Sum (\$ ,000)	.	.	.	.	.	.	**	.	.	**
Life Sci.	Count	0	0	0	0	0	0	0	0	0	0
Credit	Sum (\$ ,000)	.	.	.	.	.	.	.	.	.	.
Credits	Count	0	0	0	**	**	0	0	0	4	6
Shared	Sum (\$ ,000)	.	.	.	**	**	.	.	.	150	152
Total Refund.	Count	3	0	0	**	**	**	0	**	0	9
Credit	Sum (\$ ,000)	2	.	.	**	**	**	.	**	.	99

See footnotes after Table 7

**Table 2**  
**2016 Corporate Excise Returns by Industry and Gross Receipts**  
**Business Corporations--Manufacturing**

		Range of Gross Receipts									Total
		Missing, Less or Equal to Zero	Up to \$100K	\$100K to \$1M	\$1M to \$10M	\$10M to \$25M	\$25M to \$50M	\$50M to \$100M	\$100M to \$500M	\$500M or More	
Mass. Taxable	Count	90	79	252	781	644	407	361	576	518	3,708
Income	Sum (\$,000)	48,949	2,513	8,205	320,307	454,419	372,227	275,248	589,317	3,306,760	5,377,946
Non Income	Count	2,870	179	604	1,162	769	496	465	792	693	8,030
Excise	Sum (\$,000)	3,161	77	497	2,492	4,224	3,261	4,503	14,029	78,838	111,083
Income Excise	Count	56	76	234	761	641	404	360	574	518	3,624
	Sum (\$,000)	1,773	199	538	11,518	17,550	16,625	13,534	37,925	259,192	358,854
Excise Due	Count	4,135	306	821	1,460	1,011	643	580	927	770	10,653
	Sum (\$,000)	5,207	364	977	11,559	16,106	15,146	13,640	36,036	217,885	316,919
Exem. Prop.	Count	1,712	70	362	777	377	166	149	198	252	4,063
Sub. Loc. Tax	Sum (\$,000)	256,149	3,466	35,499	250,116	437,173	317,568	506,594	1,233,668	5,292,169	8,332,401
Econ. Dev.	Count	3	0	0	3	4	**	**	5	3	22
Inc. Pgm Cr	Sum (\$,000)	71	.	.	20	68	**	**	123	1,513	1,996
Econ. Opp.	Count	0	0	0	**	10	3	4	**	8	30
Area Credit	Sum (\$,000)	.	.	.	**	113	334	259	**	4,872	6,677
Renovation	Count	0	0	**	0	0	0	0	0	0	**
Deduction	Sum (\$,000)	.	.	**	.	.	.	.	.	.	**
Investment	Count	253	0	28	287	234	94	81	101	117	1,195
Tax Credit	Sum (\$,000)	294	.	44	1,018	2,311	2,237	2,330	4,970	16,460	29,665
Vanpool	Count	0	0	0	0	0	0	0	0	0	0
Credit	Sum (\$,000)	.	.	.	.	.	.	.	.	.	.
Research	Count	89	5	34	146	163	80	64	104	155	840
Credit	Sum (\$,000)	464	13	200	1,330	3,023	2,137	1,622	9,626	58,796	77,211
Harbor Main.	Count	**	0	0	**	3	3	3	5	**	20
Credit	Sum (\$,000)	**	.	.	**	6	28	31	61	**	177
Brownfields	Count	0	0	0	0	**	0	0	0	0	**
Credit	Sum (\$,000)	.	.	.	.	**	.	.	.	.	**
Low Income	Count	0	0	0	0	0	0	0	0	**	**
Hou. Credit	Sum (\$,000)	.	.	.	.	.	.	.	.	**	**
Historic	Count	0	0	0	**	0	0	0	0	0	**
Rehab. Credit	Sum (\$,000)	.	.	.	**	.	.	.	.	.	**
Community	Count	0	0	0	0	0	0	0	0	0	0
Inv. Credit	Sum (\$,000)	.	.	.	.	.	.	.	.	.	.
Housing Dev.	Count	0	0	0	0	**	0	**	0	0	**
Credit	Sum (\$,000)	.	.	.	.	**	.	**	.	.	**
Film Incent.	Count	0	0	0	0	**	0	**	0	0	**
Credit	Sum (\$,000)	.	.	.	.	**	.	**	.	.	**
Medical	Count	0	0	0	0	0	0	0	0	3	3
Device Credit	Sum (\$,000)	.	.	.	.	.	.	.	.	685	685
Wellness Pgm	Count	0	0	0	0	**	0	**	0	0	6
Credit	Sum (\$,000)	.	.	.	.	**	.	**	.	.	43
Life Sci.	Count	0	0	**	0	**	0	0	0	**	**
Credit	Sum (\$,000)	.	.	**	.	**	.	.	.	**	**
Credits	Count	**	0	0	**	7	6	6	20	96	137
Shared	Sum (\$,000)	**	.	.	**	126	57	56	390	41,688	42,349
Total Refund.	Count	3	0	0	**	**	0	0	**	**	10
Credit	Sum (\$,000)	365	.	.	**	**	.	.	**	**	5,749

See footnotes after Table 7



**Table 2**  
**2016 Corporate Excise Returns by Industry and Gross Receipts**  
**Business Corporations--Transportation and Warehousing**

Range of Gross Receipts											
		Missing, Less or Equal to Zero	Up to \$100K	\$100K to \$1M	\$1M to \$10M	\$10M to \$25M	\$25M to \$50M	\$50M to \$100M	\$100M to \$500M	\$500M or More	Total
Mass. Taxable	Count	88	275	263	240	120	71	71	101	66	1,295
Income	Sum (\$,000)	11,816	1,027	5,745	34,378	28,842	31,816	23,616	64,987	623,043	825,270
Non Income	Count	1,571	210	250	267	140	81	77	142	118	2,856
Excise	Sum (\$,000)	690	42	180	630	402	734	482	1,399	12,208	16,770
Income Excise	Count	29	271	244	226	117	70	70	101	66	1,194
	Sum (\$,000)	554	80	370	1,265	1,273	1,613	1,071	3,871	49,720	59,818
Excise Due	Count	3,721	689	528	459	220	136	124	190	128	6,195
	Sum (\$,000)	2,686	367	672	2,065	1,733	2,350	1,444	5,045	61,154	77,518
Exem. Prop.	Count	1,552	196	239	244	92	36	35	43	50	2,487
Sub. Loc. Tax	Sum (\$,000)	426,608	119,508	43,218	326,805	165,732	145,076	1,021,187	611,321	19,265,316	22,124,770
Econ. Dev.	Count	0	0	0	0	0	0	0	0	0	0
Inc. Pgm Cr	Sum (\$,000)	.	.	.	.	.	.	.	.	.	.
Econ. Opp.	Count	0	0	0	0	0	0	0	**	0	**
Area Credit	Sum (\$,000)	.	.	.	.	.	.	.	**	.	**
Renovation	Count	0	0	0	0	0	0	0	0	0	0
Deduction	Sum (\$,000)	.	.	.	.	.	.	.	.	.	.
Investment	Count	0	0	**	**	0	**	0	**	**	7
Tax Credit	Sum (\$,000)	.	.	**	**	.	**	.	**	**	372
Vanpool	Count	0	0	0	0	0	0	0	0	0	0
Credit	Sum (\$,000)	.	.	.	.	.	.	.	.	.	.
Research	Count	**	0	**	**	**	**	**	**	**	10
Credit	Sum (\$,000)	**	.	**	**	**	**	**	**	**	533
Harbor Main.	Count	0	0	0	0	0	0	0	0	0	0
Credit	Sum (\$,000)	.	.	.	.	.	.	.	.	.	.
Brownfields	Count	0	0	0	0	0	0	**	0	**	3
Credit	Sum (\$,000)	.	.	.	.	.	.	**	.	**	396
Low Income	Count	0	0	0	0	0	0	0	0	0	0
Hou. Credit	Sum (\$,000)	.	.	.	.	.	.	.	.	.	.
Historic	Count	0	0	0	0	0	0	0	0	0	0
Rehab. Credit	Sum (\$,000)	.	.	.	.	.	.	.	.	.	.
Community	Count	0	0	0	0	0	0	0	0	0	0
Inv. Credit	Sum (\$,000)	.	.	.	.	.	.	.	.	.	.
Housing Dev.	Count	0	0	0	0	0	0	0	0	0	0
Credit	Sum (\$,000)	.	.	.	.	.	.	.	.	.	.
Film Incent.	Count	0	0	0	0	0	0	**	0	0	**
Credit	Sum (\$,000)	.	.	.	.	.	.	**	.	.	**
Medical	Count	0	0	0	0	0	0	0	0	0	0
Device Credit	Sum (\$,000)	.	.	.	.	.	.	.	.	.	.
Wellness Pgm	Count	0	0	0	0	0	0	0	0	0	0
Credit	Sum (\$,000)	.	.	.	.	.	.	.	.	.	.
Life Sci.	Count	0	0	0	0	0	0	0	0	0	0
Credit	Sum (\$,000)	.	.	.	.	.	.	.	.	.	.
Credits	Count	0	0	0	0	0	0	**	0	**	**
Shared	Sum (\$,000)	.	.	.	.	.	.	**	.	**	**
Total Refund.	Count	0	0	0	0	**	0	0	**	0	**
Credit	Sum (\$,000)	.	.	.	.	**	.	.	**	.	**

See footnotes after Table 7

**Table 2**  
**2016 Corporate Excise Returns by Industry and Gross Receipts**  
**Business Corporations--Wholesale Trade**

		Range of Gross Receipts									Total
		Missing, Less or Equal to Zero	Up to \$100K	\$100K to \$1M	\$1M to \$10M	\$10M to \$25M	\$25M to \$50M	\$50M to \$100M	\$100M to \$500M	\$500M or More	
Mass. Taxable Income	Count Sum(\$,000)	86 33,344	78 1,476	280 8,676	711 150,572	537 184,344	374 139,412	292 176,927	409 459,644	317 1,744,672	3,084 2,899,068
Non Income Excise	Count Sum(\$,000)	2,295 1,363	143 32	463 182	895 1,321	590 1,754	392 1,447	307 1,769	485 4,314	398 32,093	5,968 44,276
Income Excise	Count Sum(\$,000)	58 1,009	75 118	267 577	695 5,637	535 7,186	373 5,208	292 7,662	408 20,509	316 129,805	3,019 177,710
Excise Due	Count Sum(\$,000)	3,498 3,388	266 233	663 902	1,235 6,797	763 8,597	503 6,518	398 9,317	587 23,843	443 146,924	8,356 206,518
Exem. Prop. Sub. Loc. Tax	Count Sum(\$,000)	1,115 82,114	37 1,762	220 16,231	516 79,600	295 127,324	143 104,766	118 134,886	132 369,713	154 4,282,469	2,730 5,198,865
Econ. Dev. Inc. Pgm Cr	Count Sum(\$,000)	0 .	0 .	0 .	0 .	0 .	0 .	** **	0 .	** **	4 971
Econ. Opp. Area Credit	Count Sum(\$,000)	0 .	0 .	0 .	0 .	** **	0 .	0 .	0 .	** **	7 2,245
Renovation Deduction	Count Sum(\$,000)	** **	0 .	0 .	0 .	0 .	0 .	0 .	0 .	0 .	** **
Investment Tax Credit	Count Sum(\$,000)	14 8	0 .	** **	12 27	13 83	** **	5 57	10 545	21 1,691	82 2,434
Vanpool Credit	Count Sum(\$,000)	0 .	0 .	0 .	0 .	0 .	0 .	0 .	0 .	0 .	0 .
Research Credit	Count Sum(\$,000)	8 51	** **	** **	15 115	11 88	11 82	8 47	10 336	34 7,740	101 8,466
Harbor Main. Credit	Count Sum(\$,000)	** **	0 .	0 .	10 34	10 50	11 91	3 25	7 217	** **	45 681
Brownfields Credit	Count Sum(\$,000)	0 .	0 .	0 .	0 .	0 .	0 .	** **	** **	** **	** **
Low Income Hou. Credit	Count Sum(\$,000)	0 .	0 .	0 .	0 .	0 .	0 .	0 .	0 .	0 .	0 .
Historic Rehab. Credit	Count Sum(\$,000)	0 .	0 .	0 .	** **	** **	0 .	** **	0 .	** **	5 687
Community Inv. Credit	Count Sum(\$,000)	0 .	0 .	0 .	0 .	0 .	0 .	0 .	0 .	0 .	0 .
Housing Dev. Credit	Count Sum(\$,000)	0 .	0 .	0 .	0 .	** **	0 .	0 .	0 .	0 .	** **
Film Incent. Credit	Count Sum(\$,000)	0 .	0 .	0 .	0 .	** **	** **	0 .	0 .	** **	4 491
Medical Device Credit	Count Sum(\$,000)	0 .	0 .	0 .	0 .	0 .	0 .	0 .	0 .	** **	** **
Wellness Pgm Credit	Count Sum(\$,000)	0 .	0 .	0 .	0 .	** **	0 .	** **	0 .	0 .	** **
Life Sci. Credit	Count Sum(\$,000)	0 .	0 .	0 .	0 .	0 .	0 .	0 .	0 .	0 .	0 .
Credits Shared	Count Sum(\$,000)	0 .	0 .	0 .	** **	** **	** **	0 .	0 .	23 2,227	26 2,246
Total Refund. Credit	Count Sum(\$,000)	0 .	0 .	0 .	0 .	0 .	0 .	** **	** **	** **	** **

See footnotes after Table 7

**Table 2**  
**2016 Corporate Excise Returns by Industry and Gross Receipts**  
**Business Corporations--Retail Trade**

		Range of Gross Receipts									Total
		Missing, Less or Equal to Zero	Up to \$100K	\$100K to \$1M	\$1M to \$10M	\$10M to \$25M	\$25M to \$50M	\$50M to \$100M	\$100M to \$500M	\$500M or More	
Mass. Taxable	Count	126	148	787	1,079	367	175	123	130	151	3,086
Income	Sum (\$,000)	26,424	2,860	13,542	118,456	110,931	76,884	136,834	241,794	2,193,513	2,921,237
Non Income	Count	8,139	301	1,446	1,544	434	219	168	198	200	12,649
Excise	Sum (\$,000)	3,641	61	384	2,002	1,703	2,090	2,594	4,853	26,775	44,103
Income Excise	Count	35	139	740	1,034	365	175	123	130	151	2,892
	Sum (\$,000)	774	170	959	4,650	3,972	2,866	4,944	12,675	157,255	188,265
Excise Due	Count	10,645	515	1,750	1,783	518	260	191	221	220	16,103
	Sum (\$,000)	7,503	406	1,699	6,826	5,720	4,952	7,221	17,011	163,592	214,929
Exem. Prop.	Count	4,138	71	713	1,072	303	154	102	101	101	6,755
Sub. Loc. Tax	Sum (\$,000)	314,616	3,348	26,546	210,669	176,083	314,489	1,347,344	351,799	6,281,339	9,026,234
Econ. Dev.	Count	0	0	0	0	0	0	0	**	**	4
Inc. Pgm Cr	Sum (\$,000)	.	.	.	.	.	.	.	**	**	552
Econ. Opp.	Count	0	0	0	0	0	0	**	**	**	5
Area Credit	Sum (\$,000)	.	.	.	.	.	.	**	**	**	1,349
Renovation	Count	0	0	**	0	0	0	0	0	0	**
Deduction	Sum (\$,000)	.	.	**	.	.	.	.	.	.	**
Investment	Count	**	0	0	3	**	**	**	3	5	16
Tax Credit	Sum (\$,000)	**	.	.	4	**	**	**	162	173	348
Vanpool	Count	0	0	0	0	0	0	0	0	0	0
Credit	Sum (\$,000)	.	.	.	.	.	.	.	.	.	.
Research	Count	6	**	0	5	**	4	5	7	8	38
Credit	Sum (\$,000)	4	**	.	16	**	35	107	264	1,411	1,848
Harbor Main.	Count	**	0	0	**	**	0	**	**	**	8
Credit	Sum (\$,000)	**	.	.	**	**	.	**	**	**	215
Brownfields	Count	0	0	0	0	0	0	0	0	0	0
Credit	Sum (\$,000)	.	.	.	.	.	.	.	.	.	.
Low Income	Count	0	0	0	0	0	0	0	0	**	**
Hou. Credit	Sum (\$,000)	.	.	.	.	.	.	.	.	**	**
Historic	Count	0	0	0	0	0	0	0	0	**	**
Rehab. Credit	Sum (\$,000)	.	.	.	.	.	.	.	.	**	**
Community	Count	0	0	0	0	0	0	0	0	0	0
Inv. Credit	Sum (\$,000)	.	.	.	.	.	.	.	.	.	.
Housing Dev.	Count	0	0	0	0	0	0	0	0	0	0
Credit	Sum (\$,000)	.	.	.	.	.	.	.	.	.	.
Film Incent.	Count	0	0	0	0	0	0	0	0	**	**
Credit	Sum (\$,000)	.	.	.	.	.	.	.	.	**	**
Medical	Count	0	0	0	0	0	0	0	0	0	0
Device Credit	Sum (\$,000)	.	.	.	.	.	.	.	.	.	.
Wellness Pgm	Count	0	0	0	**	0	0	0	0	0	**
Credit	Sum (\$,000)	.	.	.	**	.	.	.	.	.	**
Life Sci.	Count	0	0	0	0	0	0	0	0	0	0
Credit	Sum (\$,000)	.	.	.	.	.	.	.	.	.	.
Credits	Count	0	0	0	0	0	0	**	**	**	6
Shared	Sum (\$,000)	.	.	.	.	.	.	**	**	**	2,189
Total Refund.	Count	0	0	0	**	0	0	**	0	**	4
Credit	Sum (\$,000)	.	.	.	**	.	.	**	.	**	727

See footnotes after Table 7

**Table 2**  
**2016 Corporate Excise Returns by Industry and Gross Receipts**  
**Business Corporations--Information**

		Range of Gross Receipts									Total
		Missing, Less or Equal to Zero	Up to \$100K	\$100K to \$1M	\$1M to \$10M	\$10M to \$25M	\$25M to \$50M	\$50M to \$100M	\$100M to \$500M	\$500M or More	
Mass. Taxable Income	Count Sum(\$,000)	50 234,633	58 3,427	99 2,291	225 42,615	128 67,365	72 37,671	67 19,275	83 75,183	93 1,383,071	875 1,865,530
Non Income Excise	Count Sum(\$,000)	931 1,324	116 48	187 143	316 455	180 615	122 825	126 1,165	188 3,381	141 28,650	2,307 36,606
Income Excise	Count Sum(\$,000)	32 17,917	50 117	97 177	217 1,637	128 2,430	72 1,760	67 967	83 5,800	93 111,450	839 142,255
Excise Due	Count Sum(\$,000)	1,864 24,908	267 244	361 368	621 1,942	328 2,932	191 2,374	167 1,716	232 7,528	152 117,840	4,183 159,853
Exem. Prop. Sub. Loc. Tax	Count Sum(\$,000)	289 59,533	21 500	66 12,598	108 17,162	50 15,207	29 61,665	29 64,542	41 317,834	38 2,031,329	671 2,580,371
Econ. Dev. Inc. Pgm Cr	Count Sum(\$,000)	0 .	0 .	0 .	0 .	0 .	0 .	0 .	0 .	0 .	0 .
Econ. Opp. Area Credit	Count Sum(\$,000)	** **	0 .	0 .	0 .	0 .	0 .	0 .	0 .	0 .	** **
Renovation Deduction	Count Sum(\$,000)	0 .	0 .	0 .	0 .	0 .	0 .	0 .	0 .	0 .	0 .
Investment Tax Credit	Count Sum(\$,000)	5 12	0 .	** **	** **	12 24	5 19	5 20	6 53	7 534	47 668
Vanpool Credit	Count Sum(\$,000)	0 .	0 .	0 .	0 .	0 .	0 .	0 .	0 .	0 .	0 .
Research Credit	Count Sum(\$,000)	18 289	4 20	18 59	38 320	20 93	13 261	16 357	13 1,359	26 18,075	166 20,832
Harbor Main. Credit	Count Sum(\$,000)	0 .	0 .	0 .	** **	0 .	0 .	** **	0 .	0 .	** **
Brownfields Credit	Count Sum(\$,000)	0 .	0 .	0 .	0 .	0 .	0 .	0 .	0 .	0 .	0 .
Low Income Hou. Credit	Count Sum(\$,000)	0 .	0 .	0 .	0 .	0 .	0 .	0 .	0 .	0 .	0 .
Historic Rehab. Credit	Count Sum(\$,000)	0 .	0 .	0 .	0 .	0 .	0 .	0 .	0 .	0 .	0 .
Community Inv. Credit	Count Sum(\$,000)	0 .	0 .	0 .	0 .	0 .	0 .	0 .	0 .	0 .	0 .
Housing Dev. Credit	Count Sum(\$,000)	0 .	0 .	0 .	0 .	0 .	0 .	0 .	0 .	0 .	0 .
Film Incent. Credit	Count Sum(\$,000)	0 .	0 .	0 .	0 .	0 .	0 .	0 .	0 .	** **	** **
Medical Device Credit	Count Sum(\$,000)	0 .	0 .	0 .	0 .	0 .	0 .	0 .	0 .	0 .	0 .
Wellness Pgm Credit	Count Sum(\$,000)	0 .	0 .	0 .	0 .	0 .	0 .	** **	0 .	0 .	** **
Life Sci. Credit	Count Sum(\$,000)	0 .	0 .	0 .	0 .	0 .	0 .	0 .	0 .	0 .	0 .
Credits Shared	Count Sum(\$,000)	3 363	0 .	0 .	** **	** **	0 .	** **	5 340	9 3,058	23 3,930
Total Refund. Credit	Count Sum(\$,000)	** **	0 .	0 .	** **	0 .	0 .	0 .	0 .	0 .	** **

See footnotes after Table 7

**Table 2**  
**2016 Corporate Excise Returns by Industry and Gross Receipts**  
**Business Corporations--Finance, Insurance and Real Estate**

		Range of Gross Receipts									Total
		Missing, Less or Equal to Zero	Up to \$100K	\$100K to \$1M	\$1M to \$10M	\$10M to \$25M	\$25M to \$50M	\$50M to \$100M	\$100M to \$500M	\$500M or More	
Mass. Taxable	Count	2,811	373	569	577	292	159	117	203	156	5,257
Income	Sum (\$ ,000)	4,328,261	10,794	88,161	293,011	237,934	100,207	171,496	357,009	2,383,064	7,969,936
Non Income	Count	9,845	485	714	631	313	181	140	260	202	12,771
Excise	Sum (\$ ,000)	35,895	289	2,210	2,420	2,643	4,018	1,864	6,034	30,735	86,109
Income Excise	Count	2,639	358	546	556	290	157	117	203	156	5,022
	Sum (\$ ,000)	255,218	827	5,011	14,393	13,084	4,446	10,088	27,470	172,024	502,563
Excise Due	Count	20,947	927	1,162	1,080	529	290	195	366	240	25,736
	Sum (\$ ,000)	270,947	1,397	7,475	17,004	15,786	8,401	11,414	33,585	178,945	544,955
Exem. Prop.	Count	6,921	255	456	359	124	53	24	78	76	8,346
Sub. Loc. Tax	Sum (\$ ,000)	28,769,328	345,325	7,068,815	8,428,868	2,207,124	410,392	1,246,980	3,910,530	18,107,477	70,494,838
Econ. Dev.	Count	0	0	0	0	0	0	0	0	0	0
Inc. Pgm Cr	Sum (\$ ,000)	.	.	.	.	.	.	.	.	.	.
Econ. Opp.	Count	**	0	0	0	0	0	0	0	0	**
Area Credit	Sum (\$ ,000)	**	.	.	.	.	.	.	.	.	**
Renovation	Count	0	0	0	0	0	0	0	0	0	0
Deduction	Sum (\$ ,000)	.	.	.	.	.	.	.	.	.	.
Investment	Count	4	0	0	**	4	**	**	4	10	26
Tax Credit	Sum (\$ ,000)	71	.	.	**	9	**	**	92	2,270	2,455
Vanpool	Count	0	0	0	0	0	0	0	0	0	0
Credit	Sum (\$ ,000)	.	.	.	.	.	.	.	.	.	.
Research	Count	18	**	**	5	9	4	3	6	16	65
Credit	Sum (\$ ,000)	160	**	**	96	88	162	7	119	6,523	7,162
Harbor Main.	Count	0	0	0	**	0	0	0	0	0	**
Credit	Sum (\$ ,000)	.	.	.	**	.	.	.	.	.	**
Brownfields	Count	**	0	0	0	0	0	0	0	0	**
Credit	Sum (\$ ,000)	**	.	.	.	.	.	.	.	.	**
Low Income	Count	**	0	0	0	0	0	0	0	0	**
Hou. Credit	Sum (\$ ,000)	**	.	.	.	.	.	.	.	.	**
Historic	Count	**	0	0	**	0	0	**	0	0	5
Rehab. Credit	Sum (\$ ,000)	**	.	.	**	.	.	**	.	.	3,367
Community	Count	**	0	0	0	0	0	**	0	0	9
Inv. Credit	Sum (\$ ,000)	**	.	.	.	.	.	**	.	.	237
Housing Dev.	Count	0	0	0	0	0	0	0	0	0	0
Credit	Sum (\$ ,000)	.	.	.	.	.	.	.	.	.	.
Film Incent.	Count	**	0	0	0	0	0	0	0	**	3
Credit	Sum (\$ ,000)	**	.	.	.	.	.	.	.	**	7,017
Medical	Count	0	0	0	0	0	0	0	0	0	0
Device Credit	Sum (\$ ,000)	.	.	.	.	.	.	.	.	.	.
Wellness Pgm	Count	0	0	**	**	0	0	0	0	0	**
Credit	Sum (\$ ,000)	.	.	**	**	.	.	.	.	.	**
Life Sci.	Count	0	0	0	0	0	0	0	0	0	0
Credit	Sum (\$ ,000)	.	.	.	.	.	.	.	.	.	.
Credits	Count	**	0	0	0	0	0	0	**	12	18
Shared	Sum (\$ ,000)	**	.	.	.	.	.	.	**	11,896	15,000
Total Refund.	Count	24	0	0	**	0	0	0	0	**	27
Credit	Sum (\$ ,000)	167	.	.	**	.	.	.	.	**	1,439

See footnotes after Table 7

**Table 2**  
**2016 Corporate Excise Returns by Industry and Gross Receipts**  
**Business Corporations--Services**

		Range of Gross Receipts									Total
		Missing, Less or Equal to Zero	Up to \$100K	\$100K to \$1M	\$1M to \$10M	\$10M to \$25M	\$25M to \$50M	\$50M to \$100M	\$100M to \$500M	\$500M or More	
Mass. Taxable	Count	825	1,191	3,457	3,258	1,576	726	487	521	266	12,307
Income	Sum (\$ ,000)	277,915	62,147	94,712	581,825	572,095	241,195	318,504	258,345	1,235,567	3,642,304
Non Income	Count	28,139	1,383	4,745	3,764	1,537	762	561	683	336	41,910
Excise	Sum (\$ ,000)	9,758	1,647	1,629	5,640	3,676	2,352	3,503	6,493	31,684	66,382
Income Excise	Count	376	1,105	3,232	3,163	1,563	715	485	517	266	11,422
	Sum (\$ ,000)	9,023	2,150	5,858	21,640	21,577	10,472	14,663	16,469	95,196	197,049
Excise Due	Count	46,867	3,159	7,289	6,193	2,676	1,293	872	923	380	69,652
	Sum (\$ ,000)	33,839	4,612	8,456	24,827	23,581	11,150	15,878	20,089	107,405	249,837
Exem. Prop.	Count	15,242	447	2,606	2,119	568	190	151	159	120	21,602
Sub. Loc. Tax	Sum (\$ ,000)	1,780,534	77,914	176,135	694,119	766,815	402,327	325,261	1,459,023	3,865,140	9,547,268
Econ. Dev.	Count	0	0	0	0	0	**	0	**	**	4
Inc. Pgm Cr	Sum (\$ ,000)	.	.	.	.	.	**	.	**	**	189
Econ. Opp.	Count	**	0	0	0	**	0	0	**	**	**
Area Credit	Sum (\$ ,000)	**	.	.	.	**	.	.	**	**	**
Renovation	Count	**	0	0	0	0	0	0	0	0	**
Deduction	Sum (\$ ,000)	**	.	.	.	.	.	.	.	.	**
Investment	Count	34	5	9	59	38	14	18	16	15	208
Tax Credit	Sum (\$ ,000)	229	3	46	319	183	274	707	303	2,096	4,160
Vanpool	Count	0	0	0	0	0	0	0	0	0	0
Credit	Sum (\$ ,000)	.	.	.	.	.	.	.	.	.	.
Research	Count	214	48	91	230	123	58	52	50	47	913
Credit	Sum (\$ ,000)	2,090	257	841	3,912	2,132	1,687	1,797	2,695	12,009	27,420
Harbor Main.	Count	0	0	0	**	0	0	0	0	0	**
Credit	Sum (\$ ,000)	.	.	.	**	.	.	.	.	.	**
Brownfields	Count	0	0	0	0	0	0	0	0	0	0
Credit	Sum (\$ ,000)	.	.	.	.	.	.	.	.	.	.
Low Income	Count	0	0	0	0	0	0	0	0	0	0
Hou. Credit	Sum (\$ ,000)	.	.	.	.	.	.	.	.	.	.
Historic	Count	0	0	0	0	0	0	0	0	0	0
Rehab. Credit	Sum (\$ ,000)	.	.	.	.	.	.	.	.	.	.
Community	Count	0	0	0	0	0	0	0	0	0	0
Inv. Credit	Sum (\$ ,000)	.	.	.	.	.	.	.	.	.	.
Housing Dev.	Count	0	0	0	0	0	0	0	0	0	0
Credit	Sum (\$ ,000)	.	.	.	.	.	.	.	.	.	.
Film Incent.	Count	0	0	0	0	**	0	0	0	**	**
Credit	Sum (\$ ,000)	.	.	.	.	**	.	.	.	**	**
Medical	Count	0	0	0	0	0	0	0	0	0	0
Device Credit	Sum (\$ ,000)	.	.	.	.	.	.	.	.	.	.
Wellness Pgm	Count	**	0	0	**	3	**	**	0	0	8
Credit	Sum (\$ ,000)	**	.	.	**	14	**	**	.	.	44
Life Sci.	Count	**	0	0	0	0	0	0	0	0	**
Credit	Sum (\$ ,000)	**	.	.	.	.	.	.	.	.	**
Credits	Count	**	0	**	**	3	**	3	8	22	41
Shared	Sum (\$ ,000)	**	.	**	**	34	**	15	325	5,990	6,513
Total Refund.	Count	16	0	0	4	3	3	0	4	0	30
Credit	Sum (\$ ,000)	2,510	.	.	1,651	14	699	.	2,376	.	7,250

See footnotes after Table 7

**Table 2**  
**2016 Corporate Excise Returns by Industry and Gross Receipts**  
**Business Corporations--Other and Undefined**

		Range of Gross Receipts									Total
		Missing, Less or Equal to Zero	Up to \$100K	\$100K to \$1M	\$1M to \$10M	\$10M to \$25M	\$25M to \$50M	\$50M to \$100M	\$100M to \$500M	\$500M or More	
Mass. Taxable	Count	126	33	39	10	**	**	3	16	17	250
Income	Sum (\$,000)	47,323	176	910	339	**	**	1,956	2,184	32,154	86,561
Non Income	Count	117	24	32	11	3	8	9	33	34	271
Excise	Sum (\$,000)	89	1	427	24	3	489	73	171	1,973	3,250
Income Excise	Count	117	28	32	9	**	**	3	16	17	228
	Sum (\$,000)	759	13	38	13	**	**	156	175	2,572	3,817
Excise Due	Count	557	96	66	26	4	12	10	37	36	844
	Sum (\$,000)	1,161	51	483	45	21	570	238	363	3,267	6,197
Exem. Prop.	Count	63	7	13	10	0	**	**	**	11	108
Sub. Loc. Tax	Sum (\$,000)	30,278	16,423	1,310	799	.	**	**	**	67,223	137,580
Econ. Dev.	Count	0	0	0	0	0	0	0	0	0	0
Inc. Pgm Cr	Sum (\$,000)	.	.	.	.	.	.	.	.	.	.
Econ. Opp.	Count	0	0	0	0	0	0	0	0	0	0
Area Credit	Sum (\$,000)	.	.	.	.	.	.	.	.	.	.
Renovation	Count	0	0	0	0	0	0	0	0	0	0
Deduction	Sum (\$,000)	.	.	.	.	.	.	.	.	.	.
Investment	Count	**	0	0	**	0	0	0	0	**	6
Tax Credit	Sum (\$,000)	**	.	.	**	.	.	.	.	**	259
Vanpool	Count	0	0	0	0	0	0	0	0	0	0
Credit	Sum (\$,000)	.	.	.	.	.	.	.	.	.	.
Research	Count	0	0	0	0	0	0	0	0	**	**
Credit	Sum (\$,000)	.	.	.	.	.	.	.	.	**	**
Harbor Main.	Count	0	0	0	0	0	0	0	0	0	0
Credit	Sum (\$,000)	.	.	.	.	.	.	.	.	.	.
Brownfields	Count	0	0	0	0	0	0	0	0	0	0
Credit	Sum (\$,000)	.	.	.	.	.	.	.	.	.	.
Low Income	Count	0	0	0	0	0	0	0	0	0	0
Hou. Credit	Sum (\$,000)	.	.	.	.	.	.	.	.	.	.
Historic	Count	0	0	0	0	0	0	0	0	0	0
Rehab. Credit	Sum (\$,000)	.	.	.	.	.	.	.	.	.	.
Community	Count	0	0	0	0	0	0	0	0	0	0
Inv. Credit	Sum (\$,000)	.	.	.	.	.	.	.	.	.	.
Housing Dev.	Count	0	0	0	0	0	0	0	0	0	0
Credit	Sum (\$,000)	.	.	.	.	.	.	.	.	.	.
Film Incent.	Count	0	0	0	0	0	0	0	0	0	0
Credit	Sum (\$,000)	.	.	.	.	.	.	.	.	.	.
Medical	Count	0	0	0	0	0	0	0	0	0	0
Device Credit	Sum (\$,000)	.	.	.	.	.	.	.	.	.	.
Wellness Pgm	Count	0	0	0	0	0	0	0	0	0	0
Credit	Sum (\$,000)	.	.	.	.	.	.	.	.	.	.
Life Sci.	Count	0	0	0	0	0	0	0	0	0	0
Credit	Sum (\$,000)	.	.	.	.	.	.	.	.	.	.
Credits	Count	0	0	0	0	0	0	0	0	**	**
Shared	Sum (\$,000)	.	.	.	.	.	.	.	.	**	**
Total Refund.	Count	**	0	0	0	0	0	0	0	0	**
Credit	Sum (\$,000)	**	.	.	.	.	.	.	.	.	**

See footnotes after Table 7

**Table 3:  
2016 Corporate Excise Returns  
by Industry  
and  
Excise Due**



**Table 3**  
**2016 Corporate Excise Returns by Industry and Excise Due**  
**Business Corporations--All Industries**

		Range of Excise Due									Total
		Zero/Missing*	\$456 (Min Excise)*	\$457 to \$1,000	\$1,000 to \$5,000	\$5,000 to \$10,000	\$10,000 to \$25,000	\$25,000 to \$50,000	\$50,000 to \$100,000	\$100,000 or More	
Mass. Taxable Income	Count Sum (\$ ,000)	9 28,568	11,059 272,484	3,898 129,178	8,589 569,527	3,127 706,086	3,025 1,200,134	1,742 1,400,012	1,097 1,604,984	1,925 22,057,534	34,471 27,968,506
Non Income Excise	Count Sum (\$ ,000)	15 202	65,433 17,536	10,178 8,770	12,870 34,951	3,516 20,919	3,251 27,123	1,849 27,221	1,142 30,810	1,857 262,482	100,111 430,014
Income Excise	Count Sum (\$ ,000)	8 837	9,247 10,361	3,820 7,948	8,501 33,123	3,120 40,079	3,022 52,446	1,742 56,774	1,097 71,336	1,925 1,481,346	32,482 1,754,251
Excise Due	Count Sum (\$ ,000)	5,709 .	124,849 56,930	11,638 8,101	15,007 34,573	4,047 28,658	3,711 59,071	2,057 72,971	1,265 88,799	2,098 1,563,595	170,381 1,912,698
Exem. Prop. Sub. Loc. Tax	Count Sum (\$ ,000)	17 14,650	39,651 12,868,152	4,941 3,176,786	6,444 8,660,675	1,821 3,722,552	1,831 7,123,706	1,090 11,174,602	637 11,206,865	1,056 74,032,430	57,488 131,980,417
Econ. Dev. Inc. Pgm Cr	Count Sum (\$ ,000)	0 .	6 443	0 .	3 170	4 28	** **	6 206	** **	12 2,814	35 3,758
Econ. Opp. Area Credit	Count Sum (\$ ,000)	0 .	3 16	3 1,136	13 2,293	5 3,237	7 1,183	5 139	3 108	15 2,651	54 10,763
Renovation Deduction	Count Sum (\$ ,000)	0 .	** **	** **	0 .	0 .	0 .	0 .	0 .	0 .	8 9
Investment Tax Credit	Count Sum (\$ ,000)	0 .	431 5,050	195 1,627	336 5,314	135 2,165	153 2,506	133 2,744	80 2,686	194 22,098	1,657 44,192
Vanpool Credit	Count Sum (\$ ,000)	0 .	0 .	0 .	0 .	0 .	0 .	0 .	0 .	0 .	0 .
Research Credit	Count Sum (\$ ,000)	0 .	1,264 12,952	136 5,879	234 20,009	84 14,574	103 6,650	109 6,540	58 6,438	211 80,968	2,199 154,010
Harbor Main. Credit	Count Sum (\$ ,000)	0 .	12 80	** **	11 27	** **	13 48	8 58	7 44	21 780	78 1,093
Brownfields Credit	Count Sum (\$ ,000)	0 .	** **	0 .	0 .	0 .	** **	0 .	** **	4 705	9 861
Low Income Hou. Credit	Count Sum (\$ ,000)	0 .	0 .	0 .	** **	0 .	0 .	0 .	0 .	** **	13 20,647
Historic Rehab. Credit	Count Sum (\$ ,000)	0 .	3 329	** **	** **	0 .	** **	** **	0 .	5 9,824	13 11,510
Community Inv. Credit	Count Sum (\$ ,000)	0 .	0 .	0 .	0 .	0 .	** **	0 .	0 .	** **	11 243
Housing Dev. Credit	Count Sum (\$ ,000)	0 .	3 108	0 .	0 .	0 .	0 .	0 .	0 .	0 .	3 108
Film Incent. Credit	Count Sum (\$ ,000)	0 .	5 221	0 .	** **	** **	** **	0 .	** **	6 13,811	16 14,243
Medical Device Credit	Count Sum (\$ ,000)	0 .	0 .	0 .	** **	0 .	0 .	0 .	0 .	** **	4 749
Wellness Pgm Credit	Count Sum (\$ ,000)	0 .	8 36	** **	** **	** **	** **	0 .	** **	6 57	21 151
Life Sci. Credit	Count Sum (\$ ,000)	0 .	** **	** **	0 .	** **	0 .	0 .	0 .	** **	6 835
Credits Shared	Count Sum (\$ ,000)	0 .	0 .	21 216	67 6,329	29 12,805	19 10,828	27 2,067	17 4,428	83 38,282	263 74,955
Total Refund. Credit	Count Sum (\$ ,000)	0 .	30 4,905	9 2,772	11 10,776	7 278	8 885	6 2,038	5 34	21 1,928	97 23,616

See footnotes after Table 7

Table 3  
2016 Corporate Excise Returns by Industry and Excise Due  
Business Corporations--Agriculture, Forestry, Fishing and Hunting

		Range of Excise Due									Total
		Zero/Missing*	\$456 (Min Excise)*	\$457 to \$1,000	\$1,000 to \$5,000	\$5,000 to \$10,000	\$10,000 to \$25,000	\$25,000 to \$50,000	\$50,000 to \$100,000	\$100,000 or More	
Mass. Taxable Income	Count Sum(\$,000)	0 .	80 1,548	21 779	65 2,140	17 1,561	17 6,359	7 6,309	6 11,244	11 182,908	224 212,849
Non Income Excise	Count Sum(\$,000)	0 .	531 75	90 57	113 482	22 60	18 120	8 126	6 124	11 1,600	799 2,644
Income Excise	Count Sum(\$,000)	0 .	52 6	18 10	63 128	17 92	17 225	7 183	6 394	11 13,365	191 14,402
Excise Due	Count Sum(\$,000)	17 .	1,011 461	100 69	131 278	22 147	21 321	9 310	6 439	12 3,270	1,329 5,296
Exem. Prop. Sub. Loc. Tax	Count Sum(\$,000)	0 .	489 258,872	62 16,921	88 57,502	16 27,418	12 16,186	6 9,879	4 9,536	6 1,185,196	683 1,581,509
Econ. Dev. Inc. Pgm Cr	Count Sum(\$,000)	0 .	0 .	0 .	0 .	0 .	0 .	0 .	0 .	0 .	0 .
Econ. Opp. Area Credit	Count Sum(\$,000)	0 .	0 .	0 .	** **	0 .	0 .	0 .	0 .	0 .	** **
Renovation Deduction	Count Sum(\$,000)	0 .	0 .	0 .	0 .	0 .	0 .	0 .	0 .	0 .	0 .
Investment Tax Credit	Count Sum(\$,000)	0 .	11 3	6 4	8 16	** **	4 27	0 .	** **	** **	34 2,676
Vanpool Credit	Count Sum(\$,000)	0 .	0 .	0 .	0 .	0 .	0 .	0 .	0 .	0 .	0 .
Research Credit	Count Sum(\$,000)	0 .	** **	0 .	** **	0 .	0 .	0 .	0 .	** **	5 7,864
Harbor Main. Credit	Count Sum(\$,000)	0 .	0 .	0 .	0 .	0 .	0 .	0 .	0 .	0 .	0 .
Brownfields Credit	Count Sum(\$,000)	0 .	0 .	0 .	0 .	0 .	0 .	0 .	0 .	0 .	0 .
Low Income Hou. Credit	Count Sum(\$,000)	0 .	0 .	0 .	0 .	0 .	0 .	0 .	0 .	0 .	0 .
Historic Rehab. Credit	Count Sum(\$,000)	0 .	0 .	0 .	0 .	0 .	0 .	0 .	0 .	0 .	0 .
Community Inv. Credit	Count Sum(\$,000)	0 .	0 .	0 .	0 .	0 .	0 .	0 .	0 .	0 .	0 .
Housing Dev. Credit	Count Sum(\$,000)	0 .	0 .	0 .	0 .	0 .	0 .	0 .	0 .	0 .	0 .
Film Incent. Credit	Count Sum(\$,000)	0 .	0 .	0 .	0 .	0 .	0 .	0 .	0 .	0 .	0 .
Medical Device Credit	Count Sum(\$,000)	0 .	0 .	0 .	0 .	0 .	0 .	0 .	0 .	0 .	0 .
Wellness Pgm Credit	Count Sum(\$,000)	0 .	0 .	0 .	0 .	0 .	0 .	0 .	0 .	0 .	0 .
Life Sci. Credit	Count Sum(\$,000)	0 .	0 .	0 .	0 .	0 .	0 .	0 .	0 .	0 .	0 .
Credits Shared	Count Sum(\$,000)	0 .	0 .	0 .	** **	0 .	0 .	0 .	0 .	** **	** **
Total Refund. Credit	Count Sum(\$,000)	0 .	4 207	** **	** **	0 .	0 .	0 .	0 .	** **	8 489

See footnotes after Table 7

Table 3  
2016 Corporate Excise Returns by Industry and Excise Due  
Business Corporations--Mining, Quarrying, and Oil and Gas Extraction

		Range of Excise Due									Total
		Zero/Missing*	\$456 (Min Excise)*	\$457 to \$1,000	\$1,000 to \$5,000	\$5,000 to \$10,000	\$10,000 to \$25,000	\$25,000 to \$50,000	\$50,000 to \$100,000	\$100,000 or More	
Mass. Taxable Income	Count Sum (\$ ,000)	0 .	5 5	0 .	9 401	** **	7 2,121	** **	3 11,164	10 289,528	38 306,438
Non Income Excise	Count Sum (\$ ,000)	0 .	46 7	12 9	16 23	5 20	8 62	3 40	3 61	15 3,226	108 3,448
Income Excise	Count Sum (\$ ,000)	0 .	4 0	0 .	9 21	** **	7 69	** **	3 324	10 22,099	37 22,611
Excise Due	Count Sum (\$ ,000)	** .	118 54	12 8	19 46	5 43	8 120	** **	3 244	15 24,631	185 25,268
Exem. Prop. Sub. Loc. Tax	Count Sum (\$ ,000)	0 .	30 7,722	6 6,616	** **	** **	7 8,058	3 18,894	3 11,552	8 94,232	65 154,904
Econ. Dev. Inc. Pgm Cr	Count Sum (\$ ,000)	0 .	0 .	0 .	0 .	0 .	0 .	0 .	0 .	0 .	0 .
Econ. Opp. Area Credit	Count Sum (\$ ,000)	0 .	0 .	0 .	0 .	0 .	0 .	0 .	0 .	0 .	0 .
Renovation Deduction	Count Sum (\$ ,000)	0 .	0 .	0 .	0 .	0 .	0 .	0 .	0 .	0 .	0 .
Investment Tax Credit	Count Sum (\$ ,000)	0 .	0 .	** **	0 .	** **	** **	0 .	** **	5 473	11 631
Vanpool Credit	Count Sum (\$ ,000)	0 .	0 .	0 .	0 .	0 .	0 .	0 .	0 .	0 .	0 .
Research Credit	Count Sum (\$ ,000)	0 .	0 .	0 .	0 .	0 .	0 .	0 .	0 .	** **	** **
Harbor Main. Credit	Count Sum (\$ ,000)	0 .	0 .	0 .	0 .	0 .	0 .	0 .	0 .	0 .	0 .
Brownfields Credit	Count Sum (\$ ,000)	0 .	0 .	0 .	0 .	0 .	0 .	0 .	0 .	0 .	0 .
Low Income Hou. Credit	Count Sum (\$ ,000)	0 .	0 .	0 .	0 .	0 .	0 .	0 .	0 .	0 .	0 .
Historic Rehab. Credit	Count Sum (\$ ,000)	0 .	0 .	0 .	0 .	0 .	0 .	0 .	0 .	0 .	0 .
Community Inv. Credit	Count Sum (\$ ,000)	0 .	0 .	0 .	0 .	0 .	0 .	0 .	0 .	0 .	0 .
Housing Dev. Credit	Count Sum (\$ ,000)	0 .	0 .	0 .	0 .	0 .	0 .	0 .	0 .	0 .	0 .
Film Incent. Credit	Count Sum (\$ ,000)	0 .	0 .	0 .	0 .	0 .	0 .	0 .	0 .	0 .	0 .
Medical Device Credit	Count Sum (\$ ,000)	0 .	0 .	0 .	0 .	0 .	0 .	0 .	0 .	0 .	0 .
Wellness Pgm Credit	Count Sum (\$ ,000)	0 .	0 .	0 .	0 .	0 .	0 .	0 .	0 .	0 .	0 .
Life Sci. Credit	Count Sum (\$ ,000)	0 .	0 .	0 .	0 .	0 .	0 .	0 .	0 .	0 .	0 .
Credits Shared	Count Sum (\$ ,000)	0 .	0 .	0 .	0 .	0 .	0 .	0 .	0 .	0 .	0 .
Total Refund. Credit	Count Sum (\$ ,000)	0 .	0 .	0 .	0 .	0 .	0 .	0 .	0 .	0 .	0 .

See footnotes after Table 7

**Table 3**  
**2016 Corporate Excise Returns by Industry and Excise Due**  
**Business Corporations--Construction**

		Range of Excise Due									Total
		Zero/Missing*	\$456 (Min Excise)*	\$457 to \$1,000	\$1,000 to \$5,000	\$5,000 to \$10,000	\$10,000 to \$25,000	\$25,000 to \$50,000	\$50,000 to \$100,000	\$100,000 or More	
Mass. Taxable Income	Count Sum(\$ ,000)	3 28,383	1,403 15,688	530 6,778	1,180 49,583	413 58,995	349 128,840	219 212,783	120 212,261	130 1,148,054	4,347 1,861,366
Non Income Excise	Count Sum(\$ ,000)	6 79	8,568 897	1,170 617	1,500 1,644	400 867	342 1,404	212 1,464	116 1,524	128 6,848	12,442 15,344
Income Excise	Count Sum(\$ ,000)	** **	1,090 242	** **	1,172 2,554	412 2,521	349 4,709	219 7,022	120 7,252	130 61,478	4,014 86,908
Excise Due	Count Sum(\$ ,000)	90 .	17,002 7,752	1,359 932	1,785 4,136	459 3,239	375 5,937	224 8,123	121 8,292	130 66,997	21,545 105,408
Exem. Prop. Sub. Loc. Tax	Count Sum(\$ ,000)	5 10,114	7,208 889,905	739 147,166	1,018 269,715	321 126,371	297 239,305	176 250,096	104 114,388	110 754,617	9,978 2,801,678
Econ. Dev. Inc. Pgm Cr	Count Sum(\$ ,000)	0 .	0 .	0 .	0 .	0 .	0 .	0 .	0 .	** **	** **
Econ. Opp. Area Credit	Count Sum(\$ ,000)	0 .	0 .	0 .	** **	0 .	0 .	0 .	0 .	** **	** **
Renovation Deduction	Count Sum(\$ ,000)	0 .	** **	0 .	0 .	0 .	0 .	0 .	0 .	0 .	** **
Investment Tax Credit	Count Sum(\$ ,000)	0 .	4 1	3 2	3 46	5 33	3 46	** **	** **	3 391	25 525
Vanpool Credit	Count Sum(\$ ,000)	0 .	0 .	0 .	0 .	0 .	0 .	0 .	0 .	0 .	0 .
Research Credit	Count Sum(\$ ,000)	0 .	26 138	** **	4 80	5 125	** **	8 376	5 489	6 480	58 1,844
Harbor Main. Credit	Count Sum(\$ ,000)	0 .	0 .	0 .	0 .	0 .	0 .	0 .	0 .	** **	** **
Brownfields Credit	Count Sum(\$ ,000)	0 .	0 .	0 .	0 .	0 .	0 .	0 .	0 .	** **	** **
Low Income Hou. Credit	Count Sum(\$ ,000)	0 .	0 .	0 .	0 .	0 .	0 .	0 .	0 .	0 .	0 .
Historic Rehab. Credit	Count Sum(\$ ,000)	0 .	0 .	0 .	0 .	0 .	0 .	0 .	0 .	0 .	0 .
Community Inv. Credit	Count Sum(\$ ,000)	0 .	0 .	0 .	0 .	0 .	** **	0 .	0 .	** **	** **
Housing Dev. Credit	Count Sum(\$ ,000)	0 .	0 .	0 .	0 .	0 .	0 .	0 .	0 .	0 .	0 .
Film Incent. Credit	Count Sum(\$ ,000)	0 .	0 .	0 .	0 .	0 .	0 .	0 .	0 .	0 .	0 .
Medical Device Credit	Count Sum(\$ ,000)	0 .	0 .	0 .	0 .	0 .	0 .	0 .	0 .	0 .	0 .
Wellness Pgm Credit	Count Sum(\$ ,000)	0 .	** **	0 .	0 .	0 .	0 .	0 .	0 .	0 .	** **
Life Sci. Credit	Count Sum(\$ ,000)	0 .	0 .	0 .	0 .	0 .	0 .	0 .	0 .	0 .	0 .
Credits Shared	Count Sum(\$ ,000)	0 .	0 .	** **	** **	0 .	0 .	** **	** **	** **	6 152
Total Refund. Credit	Count Sum(\$ ,000)	0 .	** **	0 .	0 .	** **	** **	4 9	0 .	0 .	9 99

See footnotes after Table 7

**Table 3**  
**2016 Corporate Excise Returns by Industry and Excise Due**  
**Business Corporations--Manufacturing**

		Range of Excise Due									Total
		Zero/Missing*	\$456 (Min Excise)*	\$457 to \$1,000	\$1,000 to \$5,000	\$5,000 to \$10,000	\$10,000 to \$25,000	\$25,000 to \$50,000	\$50,000 to \$100,000	\$100,000 or More	
Mass. Taxable Income	Count Sum(\$,000)	0 .	714 101,871	289 68,261	822 141,178	423 312,145	470 241,875	323 296,576	224 329,402	443 3,886,638	3,708 5,377,946
Non Income Excise	Count Sum(\$,000)	0 .	3,348 5,732	896 2,707	1,597 10,789	552 8,941	586 8,811	373 7,061	228 6,616	450 60,426	8,030 111,083
Income Excise	Count Sum(\$,000)	0 .	641 5,225	282 5,281	819 9,028	422 22,223	470 12,405	323 13,348	224 16,465	443 274,878	3,624 358,854
Excise Due	Count Sum(\$,000)	101 .	5,599 2,553	1,000 726	1,738 4,171	596 4,242	618 9,944	389 13,896	245 17,475	468 263,911	10,754 316,919
Exem. Prop. Sub. Loc. Tax	Count Sum(\$,000)	** **	1,789 1,073,149	457 688,078	712 1,557,293	233 765,124	287 935,076	** **	120 378,906	250 2,441,005	4,063 8,332,401
Econ. Dev. Inc. Pgm Cr	Count Sum(\$,000)	0 .	5 436	0 .	** **	3 19	** **	5 189	** **	4 1,258	22 1,996
Econ. Opp. Area Credit	Count Sum(\$,000)	0 .	** **	3 1,136	6 130	3 3,227	5 1,150	5 139	** **	4 775	30 6,677
Renovation Deduction	Count Sum(\$,000)	0 .	** **	0 .	0 .	0 .	0 .	0 .	0 .	0 .	** **
Investment Tax Credit	Count Sum(\$,000)	0 .	265 3,162	143 1,371	263 3,957	107 1,394	117 1,985	108 2,059	63 2,127	129 13,609	1,195 29,665
Vanpool Credit	Count Sum(\$,000)	0 .	0 .	0 .	0 .	0 .	0 .	0 .	0 .	0 .	0 .
Research Credit	Count Sum(\$,000)	0 .	417 6,162	50 4,820	115 10,019	40 11,412	44 3,764	54 2,887	24 2,405	96 35,743	840 77,211
Harbor Main. Credit	Count Sum(\$,000)	0 .	6 29	** **	** **	** **	** **	** **	** **	4 94	20 177
Brownfields Credit	Count Sum(\$,000)	0 .	0 .	0 .	0 .	0 .	0 .	0 .	** **	0 .	** **
Low Income Hou. Credit	Count Sum(\$,000)	0 .	0 .	0 .	0 .	0 .	0 .	0 .	0 .	** **	** **
Historic Rehab. Credit	Count Sum(\$,000)	0 .	** **	0 .	0 .	0 .	0 .	** **	0 .	0 .	** **
Community Inv. Credit	Count Sum(\$,000)	0 .	0 .	0 .	0 .	0 .	0 .	0 .	0 .	0 .	0 .
Housing Dev. Credit	Count Sum(\$,000)	0 .	** **	0 .	0 .	0 .	0 .	0 .	0 .	0 .	** **
Film Incent. Credit	Count Sum(\$,000)	0 .	** **	0 .	0 .	0 .	0 .	0 .	0 .	0 .	** **
Medical Device Credit	Count Sum(\$,000)	0 .	0 .	0 .	** **	0 .	0 .	0 .	0 .	** **	3 685
Wellness Pgm Credit	Count Sum(\$,000)	0 .	** **	** **	** **	0 .	0 .	0 .	0 .	** **	6 43
Life Sci. Credit	Count Sum(\$,000)	0 .	0 .	** **	0 .	** **	0 .	0 .	0 .	** **	** **
Credits Shared	Count Sum(\$,000)	0 .	0 .	8 74	40 2,084	19 11,048	9 4,529	14 1,414	8 875	39 22,325	137 42,349
Total Refund. Credit	Count Sum(\$,000)	0 .	** **	** **	** **	** **	4 784	** **	0 .	0 .	10 5,749

See footnotes after Table 7

**Table 3**  
**2016 Corporate Excise Returns by Industry and Excise Due**  
**Business Corporations--Transportation and Warehousing**

		Range of Excise Due									Total
		Zero/Missing*	\$456 (Min Excise)*	\$457 to \$1,000	\$1,000 to \$5,000	\$5,000 to \$10,000	\$10,000 to \$25,000	\$25,000 to \$50,000	\$50,000 to \$100,000	\$100,000 or More	
Mass. Taxable Income	Count Sum(\$,000)	0 .	557 4,727	151 1,970	292 12,617	91 10,821	81 28,739	47 34,146	34 36,139	42 696,112	1,295 825,270
Non Income Excise	Count Sum(\$,000)	0 .	1,866 220	278 142	383 417	92 222	88 656	52 791	36 939	61 13,382	2,856 16,770
Income Excise	Count Sum(\$,000)	0 .	464 61	146 78	290 568	90 542	81 1,213	47 1,369	34 1,765	42 54,220	1,194 59,818
Excise Due	Count Sum(\$,000)	67 .	4,990 2,275	352 242	477 1,051	111 776	104 1,688	60 2,099	40 2,680	61 66,706	6,262 77,518
Exem. Prop. Sub. Loc. Tax	Count Sum(\$,000)	** **	1,877 826,831	** **	242 417,018	56 82,647	55 677,409	34 282,863	24 1,097,612	44 18,690,569	2,487 22,124,770
Econ. Dev. Inc. Pgm Cr	Count Sum(\$,000)	0 .	0 .	0 .	0 .	0 .	0 .	0 .	0 .	0 .	0 .
Econ. Opp. Area Credit	Count Sum(\$,000)	0 .	0 .	0 .	0 .	0 .	** **	0 .	0 .	0 .	** **
Renovation Deduction	Count Sum(\$,000)	0 .	0 .	0 .	0 .	0 .	0 .	0 .	0 .	0 .	0 .
Investment Tax Credit	Count Sum(\$,000)	0 .	** **	0 .	** **	** **	** **	** **	0 .	** **	7 372
Vanpool Credit	Count Sum(\$,000)	0 .	0 .	0 .	0 .	0 .	0 .	0 .	0 .	0 .	0 .
Research Credit	Count Sum(\$,000)	0 .	5 24	0 .	0 .	0 .	** **	** **	** **	** **	10 533
Harbor Main. Credit	Count Sum(\$,000)	0 .	0 .	0 .	0 .	0 .	0 .	0 .	0 .	0 .	0 .
Brownfields Credit	Count Sum(\$,000)	0 .	0 .	0 .	0 .	0 .	0 .	0 .	** **	** **	3 396
Low Income Hou. Credit	Count Sum(\$,000)	0 .	0 .	0 .	0 .	0 .	0 .	0 .	0 .	0 .	0 .
Historic Rehab. Credit	Count Sum(\$,000)	0 .	0 .	0 .	0 .	0 .	0 .	0 .	0 .	0 .	0 .
Community Inv. Credit	Count Sum(\$,000)	0 .	0 .	0 .	0 .	0 .	0 .	0 .	0 .	0 .	0 .
Housing Dev. Credit	Count Sum(\$,000)	0 .	0 .	0 .	0 .	0 .	0 .	0 .	0 .	0 .	0 .
Film Incent. Credit	Count Sum(\$,000)	0 .	0 .	0 .	0 .	0 .	0 .	0 .	** **	0 .	** **
Medical Device Credit	Count Sum(\$,000)	0 .	0 .	0 .	0 .	0 .	0 .	0 .	0 .	0 .	0 .
Wellness Pgm Credit	Count Sum(\$,000)	0 .	0 .	0 .	0 .	0 .	0 .	0 .	0 .	0 .	0 .
Life Sci. Credit	Count Sum(\$,000)	0 .	0 .	0 .	0 .	0 .	0 .	0 .	0 .	0 .	0 .
Credits Shared	Count Sum(\$,000)	0 .	0 .	0 .	0 .	0 .	** **	** **	0 .	0 .	** **
Total Refund. Credit	Count Sum(\$,000)	0 .	0 .	0 .	0 .	0 .	** **	0 .	** **	0 .	** **

See footnotes after Table 7

**Table 3**  
**2016 Corporate Excise Returns by Industry and Excise Due**  
**Business Corporations--Wholesale Trade**

		Range of Excise Due									Total
		Zero/Missing*	\$456 (Min Excise)*	\$457 to \$1,000	\$1,000 to \$5,000	\$5,000 to \$10,000	\$10,000 to \$25,000	\$25,000 to \$50,000	\$50,000 to \$100,000	\$100,000 or More	
Mass. Taxable Income	Count Sum (\$ ,000)	** **	** **	283 16,031	803 40,948	342 41,045	413 126,722	243 154,808	157 200,213	258 2,306,743	3,084 2,899,068
Non Income Excise	Count Sum (\$ ,000)	** **	2,538 647	** **	1,212 5,192	400 1,817	444 2,536	253 3,210	157 2,769	261 27,723	5,968 44,276
Income Excise	Count Sum (\$ ,000)	** **	** **	280 547	798 2,256	341 1,903	412 5,243	243 7,073	157 9,179	258 151,156	3,019 177,710
Excise Due	Count Sum (\$ ,000)	69 .	4,609 2,102	791 561	1,358 3,275	432 3,019	470 7,526	263 9,239	166 11,476	267 169,320	8,425 206,518
Exem. Prop. Sub. Loc. Tax	Count Sum (\$ ,000)	** **	1,054 106,954	** **	520 1,150,426	190 141,701	255 183,207	159 192,563	95 153,099	173 3,226,354	2,730 5,198,865
Econ. Dev. Inc. Pgm Cr	Count Sum (\$ ,000)	0 .	0 .	0 .	0 .	0 .	0 .	** **	0 .	** **	4 971
Econ. Opp. Area Credit	Count Sum (\$ ,000)	0 .	** **	0 .	3 2,024	** **	0 .	0 .	0 .	** **	7 2,245
Renovation Deduction	Count Sum (\$ ,000)	0 .	** **	0 .	0 .	0 .	0 .	0 .	0 .	0 .	** **
Investment Tax Credit	Count Sum (\$ ,000)	0 .	16 36	0 .	18 79	9 163	8 83	6 205	3 60	22 1,807	82 2,434
Vanpool Credit	Count Sum (\$ ,000)	0 .	0 .	0 .	0 .	0 .	0 .	0 .	0 .	0 .	0 .
Research Credit	Count Sum (\$ ,000)	0 .	47 274	5 28	11 2,570	5 442	6 138	7 424	5 338	15 4,251	101 8,466
Harbor Main. Credit	Count Sum (\$ ,000)	0 .	5 50	0 .	8 21	** **	10 36	5 47	** **	12 503	45 681
Brownfields Credit	Count Sum (\$ ,000)	0 .	** **	0 .	0 .	0 .	** **	0 .	0 .	0 .	3 84
Low Income Hou. Credit	Count Sum (\$ ,000)	0 .	0 .	0 .	0 .	0 .	0 .	0 .	0 .	0 .	0 .
Historic Rehab. Credit	Count Sum (\$ ,000)	0 .	** **	** **	0 .	0 .	0 .	0 .	0 .	** **	5 687
Community Inv. Credit	Count Sum (\$ ,000)	0 .	0 .	0 .	0 .	0 .	0 .	0 .	0 .	0 .	0 .
Housing Dev. Credit	Count Sum (\$ ,000)	0 .	** **	0 .	0 .	0 .	0 .	0 .	0 .	0 .	** **
Film Incent. Credit	Count Sum (\$ ,000)	0 .	** **	0 .	0 .	** **	0 .	0 .	0 .	** **	4 491
Medical Device Credit	Count Sum (\$ ,000)	0 .	0 .	0 .	** **	0 .	0 .	0 .	0 .	0 .	** **
Wellness Pgm Credit	Count Sum (\$ ,000)	0 .	0 .	0 .	0 .	0 .	0 .	0 .	** **	** **	** **
Life Sci. Credit	Count Sum (\$ ,000)	0 .	0 .	0 .	0 .	0 .	0 .	0 .	0 .	0 .	0 .
Credits Shared	Count Sum (\$ ,000)	0 .	0 .	** **	4 169	4 70	** **	5 433	** **	8 1,405	26 2,246
Total Refund. Credit	Count Sum (\$ ,000)	0 .	0 .	0 .	** **	0 .	0 .	0 .	** **	0 .	3 7,768

See footnotes after Table 7

**Table 3**  
**2016 Corporate Excise Returns by Industry and Excise Due**  
**Business Corporations--Retail Trade**

		Range of Excise Due									Total
		Zero/Missing*	\$456 (Min Excise)*	\$457 to \$1,000	\$1,000 to \$5,000	\$5,000 to \$10,000	\$10,000 to \$25,000	\$25,000 to \$50,000	\$50,000 to \$100,000	\$100,000 or More	
Mass. Taxable Income	Count Sum(\$,000)	0 .	715 8,502	389 4,486	900 58,403	346 43,657	311 93,433	164 103,610	102 138,621	159 2,470,525	3,086 2,921,237
Non Income Excise	Count Sum(\$,000)	0 .	7,898 1,182	1,735 1,026	1,771 2,619	414 1,244	363 2,582	186 2,888	116 3,302	166 29,259	12,649 44,103
Income Excise	Count Sum(\$,000)	0 .	555 140	374 206	881 3,614	346 1,871	311 3,525	164 3,772	102 5,266	159 169,872	2,892 188,265
Excise Due	Count Sum(\$,000)	259 .	11,155 5,087	1,810 1,230	1,845 4,061	432 3,022	380 6,072	191 6,681	120 8,246	170 180,531	16,362 214,929
Exem. Prop. Sub. Loc. Tax	Count Sum(\$,000)	0 .	3,772 248,911	932 80,031	1,111 539,409	293 172,780	291 153,839	142 113,318	85 1,549,693	129 6,168,253	6,755 9,026,234
Econ. Dev. Inc. Pgm Cr	Count Sum(\$,000)	0 .	0 .	0 .	0 .	0 .	0 .	0 .	0 .	4 552	4 552
Econ. Opp. Area Credit	Count Sum(\$,000)	0 .	0 .	0 .	0 .	** **	0 .	0 .	0 .	** **	5 1,349
Renovation Deduction	Count Sum(\$,000)	0 .	0 .	** **	0 .	0 .	0 .	0 .	0 .	0 .	** **
Investment Tax Credit	Count Sum(\$,000)	0 .	3 6	** **	0 .	0 .	3 15	0 .	** **	5 190	16 348
Vanpool Credit	Count Sum(\$,000)	0 .	0 .	0 .	0 .	0 .	0 .	0 .	0 .	0 .	0 .
Research Credit	Count Sum(\$,000)	0 .	21 95	** **	3 44	** **	** **	0 .	0 .	9 1,565	38 1,848
Harbor Main. Credit	Count Sum(\$,000)	0 .	0 .	0 .	** **	** **	0 .	** **	** **	3 169	8 215
Brownfields Credit	Count Sum(\$,000)	0 .	0 .	0 .	0 .	0 .	0 .	0 .	0 .	0 .	0 .
Low Income Hou. Credit	Count Sum(\$,000)	0 .	0 .	0 .	** **	0 .	0 .	0 .	0 .	** **	** **
Historic Rehab. Credit	Count Sum(\$,000)	0 .	0 .	0 .	0 .	0 .	0 .	0 .	0 .	** **	** **
Community Inv. Credit	Count Sum(\$,000)	0 .	0 .	0 .	0 .	0 .	0 .	0 .	0 .	0 .	0 .
Housing Dev. Credit	Count Sum(\$,000)	0 .	0 .	0 .	0 .	0 .	0 .	0 .	0 .	0 .	0 .
Film Incent. Credit	Count Sum(\$,000)	0 .	0 .	0 .	** **	0 .	0 .	0 .	0 .	** **	3 5,697
Medical Device Credit	Count Sum(\$,000)	0 .	0 .	0 .	0 .	0 .	0 .	0 .	0 .	0 .	0 .
Wellness Pgm Credit	Count Sum(\$,000)	0 .	** **	0 .	0 .	0 .	0 .	0 .	0 .	0 .	** **
Life Sci. Credit	Count Sum(\$,000)	0 .	0 .	0 .	0 .	0 .	0 .	0 .	0 .	0 .	0 .
Credits Shared	Count Sum(\$,000)	0 .	0 .	** **	** **	0 .	** **	0 .	** **	** **	6 2,189
Total Refund. Credit	Count Sum(\$,000)	0 .	0 .	0 .	0 .	** **	** **	0 .	0 .	** **	4 727

See footnotes after Table 7



**Table 3**  
**2016 Corporate Excise Returns by Industry and Excise Due**  
**Business Corporations--Information**

		Range of Excise Due									Total
		Zero/Missing*	\$456 (Min Excise)*	\$457 to \$1,000	\$1,000 to \$5,000	\$5,000 to \$10,000	\$10,000 to \$25,000	\$25,000 to \$50,000	\$50,000 to \$100,000	\$100,000 or More	
Mass. Taxable Income	Count	**	284	**	158	87	79	46	31	99	875
	Sum (\$ ,000)	**	6,703	**	8,755	13,036	47,685	25,130	37,584	1,724,305	1,865,530
Non Income Excise	Count	**	1,302	215	334	**	117	59	51	107	2,307
	Sum (\$ ,000)	**	556	310	1,185	**	1,911	1,376	2,579	28,126	36,606
Income Excise	Count	**	252	**	156	87	79	46	31	99	839
	Sum (\$ ,000)	**	253	**	409	596	3,184	1,438	1,837	134,428	142,255
Excise Due	Count	15	3,000	282	395	137	132	66	54	117	4,198
	Sum (\$ ,000)	.	1,368	209	923	969	2,177	2,410	3,841	147,954	159,853
Exem. Prop. Sub. Loc. Tax	Count	0	405	54	79	18	32	22	16	45	671
	Sum (\$ ,000)	.	308,001	18,429	64,085	87,170	73,470	263,378	20,844	1,744,994	2,580,371
Econ. Dev. Inc. Pgm Cr	Count	0	0	0	0	0	0	0	0	0	0
	Sum (\$ ,000)	.	.	.	.	.	.	.	.	.	.
Econ. Opp. Area Credit	Count	0	0	0	**	0	0	0	0	**	**
	Sum (\$ ,000)	.	.	.	**	.	.	.	.	**	**
Renovation Deduction	Count	0	0	0	0	0	0	0	0	0	0
	Sum (\$ ,000)	.	.	.	.	.	.	.	.	.	.
Investment Tax Credit	Count	0	17	7	7	**	5	**	**	6	47
	Sum (\$ ,000)	.	78	38	250	**	142	**	**	120	668
Vanpool Credit	Count	0	0	0	0	0	0	0	0	0	0
	Sum (\$ ,000)	.	.	.	.	.	.	.	.	.	.
Research Credit	Count	0	93	14	17	3	10	4	3	22	166
	Sum (\$ ,000)	.	541	219	523	104	448	323	586	18,089	20,832
Harbor Main. Credit	Count	0	0	0	0	0	**	0	0	**	**
	Sum (\$ ,000)	.	.	.	.	.	**	.	.	**	**
Brownfields Credit	Count	0	0	0	0	0	0	0	0	0	0
	Sum (\$ ,000)	.	.	.	.	.	.	.	.	.	.
Low Income Hou. Credit	Count	0	0	0	0	0	0	0	0	0	0
	Sum (\$ ,000)	.	.	.	.	.	.	.	.	.	.
Historic Rehab. Credit	Count	0	0	0	0	0	0	0	0	0	0
	Sum (\$ ,000)	.	.	.	.	.	.	.	.	.	.
Community Inv. Credit	Count	0	0	0	0	0	0	0	0	0	0
	Sum (\$ ,000)	.	.	.	.	.	.	.	.	.	.
Housing Dev. Credit	Count	0	0	0	0	0	0	0	0	0	0
	Sum (\$ ,000)	.	.	.	.	.	.	.	.	.	.
Film Incent. Credit	Count	0	0	0	0	0	0	0	0	**	**
	Sum (\$ ,000)	.	.	.	.	.	.	.	.	**	**
Medical Device Credit	Count	0	0	0	0	0	0	0	0	0	0
	Sum (\$ ,000)	.	.	.	.	.	.	.	.	.	.
Wellness Pgm Credit	Count	0	0	0	0	0	0	0	0	**	**
	Sum (\$ ,000)	.	.	.	.	.	.	.	.	**	**
Life Sci. Credit	Count	0	0	0	0	0	0	0	0	0	0
	Sum (\$ ,000)	.	.	.	.	.	.	.	.	.	.
Credits Shared	Count	0	0	3	**	0	4	4	**	8	23
	Sum (\$ ,000)	.	.	6	**	.	2,393	107	**	1,414	3,930
Total Refund. Credit	Count	0	0	**	**	**	0	0	0	0	**
	Sum (\$ ,000)	.	.	**	**	**	.	.	.	.	**

See footnotes after Table 7

**Table 3**  
**16 Corporate Excise Returns by Industry and Excise Due**  
**Business Corporations--Finance, Insurance and Real Estate**

		Range of Excise Due									Total
		Zero/Missing*	\$456 (Min Excise)*	\$457 to \$1,000	\$1,000 to \$5,000	\$5,000 to \$10,000	\$10,000 to \$25,000	\$25,000 to \$50,000	\$50,000 to \$100,000	\$100,000 or More	
Mass. Taxable Income	Count	3	1,535	553	1,240	482	502	271	211	460	5,257
	Sum (\$ ,000)	27	12,353	6,720	79,457	86,524	221,310	210,102	274,491	7,078,951	7,969,936
Non Income Excise	Count	**	7,472	**	1,949	529	474	271	211	353	12,771
	Sum (\$ ,000)	**	872	**	3,073	4,273	4,792	4,748	7,059	60,357	86,109
Income Excise	Count	3	1,333	542	1,220	481	501	271	211	460	5,022
	Sum (\$ ,000)	2	184	358	4,496	3,918	9,522	8,118	12,813	463,152	502,563
Excise Due	Count	4,271	18,957	1,796	2,443	702	674	364	273	527	30,007
	Sum (\$ ,000)	.	8,644	1,272	5,677	5,031	10,740	12,970	19,589	481,033	544,955
Exem. Prop. Sub. Loc. Tax	Count	8	6,017	660	879	231	188	132	81	150	8,346
	Sum (\$ ,000)	4,124	7,022,483	1,206,259	2,711,766	2,091,455	4,266,787	8,982,348	7,578,073	36,631,542	70,494,838
Econ. Dev. Inc. Pgm Cr	Count	0	0	0	0	0	0	0	0	0	0
	Sum (\$ ,000)	.	.	.	.	.	.	.	.	.	.
Econ. Opp. Area Credit	Count	0	0	0	0	0	0	0	0	**	**
	Sum (\$ ,000)	.	.	.	.	.	.	.	.	**	**
Renovation Deduction	Count	0	0	0	0	0	0	0	0	0	0
	Sum (\$ ,000)	.	.	.	.	.	.	.	.	.	.
Investment Tax Credit	Count	0	**	4	5	**	**	0	3	9	26
	Sum (\$ ,000)	.	**	37	69	**	**	.	69	1,770	2,455
Vanpool Credit	Count	0	0	0	0	0	0	0	0	0	0
	Sum (\$ ,000)	.	.	.	.	.	.	.	.	.	.
Research Credit	Count	0	26	8	6	**	**	**	3	18	65
	Sum (\$ ,000)	.	58	104	145	**	**	**	205	5,231	7,162
Harbor Main. Credit	Count	0	0	0	**	0	0	0	0	0	**
	Sum (\$ ,000)	.	.	.	**	.	.	.	.	.	**
Brownfields Credit	Count	0	0	0	0	0	0	0	0	**	**
	Sum (\$ ,000)	.	.	.	.	.	.	.	.	**	**
Low Income Hou. Credit	Count	0	0	0	0	0	0	0	0	10	10
	Sum (\$ ,000)	.	.	.	.	.	.	.	.	18,095	18,095
Historic Rehab. Credit	Count	0	0	0	**	0	**	0	0	**	5
	Sum (\$ ,000)	.	.	.	**	.	**	.	.	**	3,367
Community Inv. Credit	Count	0	0	0	0	0	**	0	0	**	9
	Sum (\$ ,000)	.	.	.	.	.	**	.	.	**	237
Housing Dev. Credit	Count	0	0	0	0	0	0	0	0	0	0
	Sum (\$ ,000)	.	.	.	.	.	.	.	.	.	.
Film Incent. Credit	Count	0	0	0	0	0	**	0	0	**	3
	Sum (\$ ,000)	.	.	.	.	.	**	.	.	**	7,017
Medical Device Credit	Count	0	0	0	0	0	0	0	0	0	0
	Sum (\$ ,000)	.	.	.	.	.	.	.	.	.	.
Wellness Pgm Credit	Count	0	0	0	0	0	**	0	0	**	**
	Sum (\$ ,000)	.	.	.	.	.	**	.	.	**	**
Life Sci. Credit	Count	0	0	0	0	0	0	0	0	0	0
	Sum (\$ ,000)	.	.	.	.	.	.	.	.	.	.
Credits Shared	Count	0	0	0	3	**	**	0	**	11	18
	Sum (\$ ,000)	.	.	.	1,021	**	**	.	**	8,697	15,000
Total Refund. Credit	Count	0	**	3	3	**	0	0	**	18	27
	Sum (\$ ,000)	.	**	273	9	**	.	.	**	1,140	1,439

See footnotes after Table 7

**Table 3**  
**2016 Corporate Excise Returns by Industry and Excise Due**  
**Business Corporations--Services**

		Range of Excise Due									Total
		Zero/Missing*	\$456 (Min Excise)*	\$457 to \$1,000	\$1,000 to \$5,000	\$5,000 to \$10,000	\$10,000 to \$25,000	\$25,000 to \$50,000	\$50,000 to \$100,000	\$100,000 or More	
Mass. Taxable Income	Count Sum (\$ ,000)	0 .	5,083 106,705	1,571 21,208	3,065 159,941	904 131,947	769 285,048	409 340,282	204 345,513	302 2,251,661	12,307 3,642,304
Non Income Excise	Count Sum (\$ ,000)	4 3	31,722 7,336	3,548 2,576	3,953 9,249	965 2,940	792 4,051	421 5,263	214 5,813	291 29,150	41,910 66,382
Income Excise	Count Sum (\$ ,000)	0 .	4,249 3,897	1,549 1,039	3,039 9,134	902 6,276	768 12,010	409 14,038	204 15,726	302 134,929	11,422 197,049
Excise Due	Count Sum (\$ ,000)	502 .	57,786 26,350	4,095 2,822	4,736 10,744	1,123 7,954	893 13,997	472 16,531	232 16,177	315 155,261	70,154 249,837
Exem. Prop. Sub. Loc. Tax	Count Sum (\$ ,000)	** **	16,938 2,089,484	1,583 918,333	1,782 1,887,941	** **	404 558,511	199 566,991	104 293,156	133 3,010,747	21,602 9,547,268
Econ. Dev. Inc. Pgm Cr	Count Sum (\$ ,000)	0 .	** **	0 .	** **	** **	** **	0 .	0 .	0 .	** **
Econ. Opp. Area Credit	Count Sum (\$ ,000)	0 .	** **	0 .	** **	0 .	** **	0 .	0 .	** **	** **
Renovation Deduction	Count Sum (\$ ,000)	0 .	** **	0 .	0 .	0 .	0 .	0 .	0 .	0 .	** **
Investment Tax Credit	Count Sum (\$ ,000)	0 .	113 1,761	26 172	30 852	** **	8 145	13 414	** **	9 709	208 4,160
Vanpool Credit	Count Sum (\$ ,000)	0 .	0 .	0 .	0 .	0 .	0 .	0 .	0 .	0 .	0 .
Research Credit	Count Sum (\$ ,000)	0 .	626 5,656	56 680	76 5,993	28 1,081	36 1,930	33 2,386	17 2,402	41 7,291	913 27,420
Harbor Main. Credit	Count Sum (\$ ,000)	0 .	** **	0 .	0 .	0 .	0 .	0 .	0 .	0 .	** **
Brownfields Credit	Count Sum (\$ ,000)	0 .	0 .	0 .	0 .	0 .	0 .	0 .	0 .	0 .	0 .
Low Income Hou. Credit	Count Sum (\$ ,000)	0 .	0 .	0 .	0 .	0 .	0 .	0 .	0 .	0 .	0 .
Historic Rehab. Credit	Count Sum (\$ ,000)	0 .	0 .	0 .	0 .	0 .	0 .	0 .	0 .	0 .	0 .
Community Inv. Credit	Count Sum (\$ ,000)	0 .	0 .	0 .	0 .	0 .	0 .	0 .	0 .	0 .	0 .
Housing Dev. Credit	Count Sum (\$ ,000)	0 .	0 .	0 .	0 .	0 .	0 .	0 .	0 .	0 .	0 .
Film Incent. Credit	Count Sum (\$ ,000)	0 .	** **	0 .	0 .	0 .	0 .	0 .	** **	0 .	** **
Medical Device Credit	Count Sum (\$ ,000)	0 .	0 .	0 .	0 .	0 .	0 .	0 .	0 .	0 .	0 .
Wellness Pgm Credit	Count Sum (\$ ,000)	0 .	4 8	0 .	0 .	** **	0 .	0 .	0 .	** **	8 44
Life Sci. Credit	Count Sum (\$ ,000)	0 .	3 33	0 .	0 .	0 .	0 .	0 .	0 .	0 .	3 33
Credits Shared	Count Sum (\$ ,000)	0 .	0 .	6 116	14 964	4 200	** **	** **	** **	11 1,894	41 6,513
Total Refund. Credit	Count Sum (\$ ,000)	0 .	20 4,692	3 2,363	** **	** **	** **	** **	** **	0 .	30 7,250

See footnotes after Table 7

**Table 3**  
**2016 Corporate Excise Returns by Industry and Excise Due**  
**Business Corporations--Other and Undefined**

		Range of Excise Due									Total
		Zero/Missing*	\$456 (Min Excise)*	\$457 to \$1,000	\$1,000 to \$5,000	\$5,000 to \$10,000	\$10,000 to \$25,000	\$25,000 to \$50,000	\$50,000 to \$100,000	\$100,000 or More	
Mass. Taxable Income	Count Sum (\$ ,000)	** **	99 1,970	** **	55 16,105	20 5,964	27 18,001	11 13,439	5 8,352	11 22,107	250 86,561
Non Income Excise	Count Sum (\$ ,000)	0 .	142 11	22 12	42 278	17 89	19 198	11 253	4 24	14 2,385	271 3,250
Income Excise	Count Sum (\$ ,000)	** **	78 12	** **	54 917	20 120	27 341	11 331	5 315	11 1,769	228 3,817
Excise Due	Count Sum (\$ ,000)	** .	622 284	41 30	80 210	28 215	36 550	16 590	** **	16 3,980	845 6,197
Exem. Prop. Sub. Loc. Tax	Count Sum (\$ ,000)	0 .	72 35,840	11 905	7 2,022	3 1,518	3 11,859	** **	** **	8 84,920	108 137,580
Econ. Dev. Inc. Pgm Cr	Count Sum (\$ ,000)	0 .	0 .	0 .	0 .	0 .	0 .	0 .	0 .	0 .	0 .
Econ. Opp. Area Credit	Count Sum (\$ ,000)	0 .	0 .	0 .	0 .	0 .	0 .	0 .	0 .	0 .	0 .
Renovation Deduction	Count Sum (\$ ,000)	0 .	0 .	0 .	0 .	0 .	0 .	0 .	0 .	0 .	0 .
Investment Tax Credit	Count Sum (\$ ,000)	0 .	0 .	** **	** **	0 .	0 .	** **	0 .	** **	6 259
Vanpool Credit	Count Sum (\$ ,000)	0 .	0 .	0 .	0 .	0 .	0 .	0 .	0 .	0 .	0 .
Research Credit	Count Sum (\$ ,000)	0 .	0 .	0 .	** **	0 .	0 .	0 .	0 .	** **	** **
Harbor Main. Credit	Count Sum (\$ ,000)	0 .	0 .	0 .	0 .	0 .	0 .	0 .	0 .	0 .	0 .
Brownfields Credit	Count Sum (\$ ,000)	0 .	0 .	0 .	0 .	0 .	0 .	0 .	0 .	0 .	0 .
Low Income Hou. Credit	Count Sum (\$ ,000)	0 .	0 .	0 .	0 .	0 .	0 .	0 .	0 .	0 .	0 .
Historic Rehab. Credit	Count Sum (\$ ,000)	0 .	0 .	0 .	0 .	0 .	0 .	0 .	0 .	0 .	0 .
Community Inv. Credit	Count Sum (\$ ,000)	0 .	0 .	0 .	0 .	0 .	0 .	0 .	0 .	0 .	0 .
Housing Dev. Credit	Count Sum (\$ ,000)	0 .	0 .	0 .	0 .	0 .	0 .	0 .	0 .	0 .	0 .
Film Incent. Credit	Count Sum (\$ ,000)	0 .	0 .	0 .	0 .	0 .	0 .	0 .	0 .	0 .	0 .
Medical Device Credit	Count Sum (\$ ,000)	0 .	0 .	0 .	0 .	0 .	0 .	0 .	0 .	0 .	0 .
Wellness Pgm Credit	Count Sum (\$ ,000)	0 .	0 .	0 .	0 .	0 .	0 .	0 .	0 .	0 .	0 .
Life Sci. Credit	Count Sum (\$ ,000)	0 .	0 .	0 .	0 .	0 .	0 .	0 .	0 .	0 .	0 .
Credits Shared	Count Sum (\$ ,000)	0 .	0 .	0 .	** **	0 .	0 .	0 .	0 .	** **	** **
Total Refund. Credit	Count Sum (\$ ,000)	0 .	** **	0 .	0 .	0 .	0 .	0 .	0 .	0 .	** **

See footnotes after Table 7

**Table 4:  
2016 Corporate Excise Returns  
by Industry  
and  
Massachusetts Taxable Income**

Table 4  
2016 Corporate Excise Returns by Industry and Massachusetts Taxable Income  
Business Corporations--All Industries

Range of Massachusetts Taxable Income											
		Missing	Zero	Up to \$100K	\$100K to \$1M	\$1M to \$10M	\$10M to \$25M	\$25M to \$50M	\$50M to \$100M	\$100M to \$500M	Total
Mass. Taxable Income	Count	0	0	24,567	6,773	2,687	270	82	61	31	34,471
	Sum(\$,000)	.	.	482,409	2,390,716	7,904,080	4,279,592	2,803,094	4,048,013	6,060,602	27,968,506
Non Income Excise	Count	0	75,202	16,664	5,565	2,328	214	66	48	24	100,111
	Sum(\$,000)	.	141,790	19,211	41,314	92,932	49,509	20,723	33,218	31,318	430,014
Income Excise	Count	0	0	22,815	6,546	2,677	270	82	61	31	32,482
	Sum(\$,000)	.	.	30,113	117,472	427,284	279,499	196,226	287,929	415,728	1,754,251
Excise Due	Count	**	130,208	24,561	6,772	2,686	269	82	61	**	164,672
	Sum(\$,000)	**	158,073	50,515	146,236	457,894	282,944	186,303	273,953	**	1,912,698
Exem. Prop. Sub. Loc. Tax	Count	**	45,760	6,780	3,192	1,539	132	35	32	**	57,488
	Sum(\$,000)	**	69,081,881	11,920,433	16,769,861	8,848,080	4,656,748	3,102,480	4,106,470	**	131,980,417
Econ. Dev. Inc. Pgm Cr	Count	0	5	4	6	16	**	**	**	**	35
	Sum(\$,000)	.	54	16	87	1,317	**	**	**	**	3,758
Econ. Opp. Area Credit	Count	0	13	**	13	12	3	**	5	3	54
	Sum(\$,000)	.	1,716	**	224	1,658	961	**	2,485	2,852	10,763
Renovation Deduction	Count	0	**	**	0	0	0	0	0	0	8
	Sum(\$,000)	.	**	**	.	.	.	.	.	.	9
Investment Tax Credit	Count	**	854	146	290	314	31	10	7	**	1,657
	Sum(\$,000)	**	6,530	1,231	3,499	14,382	7,283	2,149	5,374	**	44,192
Vanpool Credit	Count	0	0	0	0	0	0	0	0	0	0
	Sum(\$,000)	.	.	.	.	.	.	.	.	.	.
Research Credit	Count	0	1,123	303	378	313	47	14	11	10	2,199
	Sum(\$,000)	.	18,502	1,315	8,389	32,958	23,160	14,113	18,037	37,536	154,010
Harbor Main. Credit	Count	0	24	**	17	24	4	**	0	0	78
	Sum(\$,000)	.	145	**	83	336	221	**	.	.	1,093
Brownfields Credit	Count	0	**	0	**	**	**	0	0	**	9
	Sum(\$,000)	.	**	.	**	**	**	.	.	**	861
Low Income Hou. Credit	Count	0	0	0	0	0	**	5	4	**	13
	Sum(\$,000)	.	.	.	.	.	**	5,156	4,013	**	20,647
Historic Rehab. Credit	Count	0	**	**	**	6	**	0	**	**	13
	Sum(\$,000)	.	**	**	**	1,168	**	.	**	**	11,510
Community Inv. Credit	Count	0	0	0	**	**	4	**	**	0	11
	Sum(\$,000)	.	.	.	**	**	33	**	**	.	243
Housing Dev. Credit	Count	0	0	0	**	**	0	0	0	0	3
	Sum(\$,000)	.	.	.	**	**	.	.	.	.	108
Film Incent. Credit	Count	0	**	0	3	4	**	**	**	3	16
	Sum(\$,000)	.	**	.	164	172	**	**	**	9,601	14,243
Medical Device Credit	Count	0	**	0	0	**	0	0	0	0	4
	Sum(\$,000)	.	**	.	.	**	.	.	.	.	749
Wellness Pgm Credit	Count	0	**	**	5	8	0	**	0	0	21
	Sum(\$,000)	.	**	**	43	76	.	**	.	.	151
Life Sci. Credit	Count	0	**	0	0	**	0	0	0	0	6
	Sum(\$,000)	.	**	.	.	**	.	.	.	.	835
Credits Shared	Count	0	94	15	33	77	21	6	8	9	263
	Sum(\$,000)	.	5,944	232	671	11,605	13,339	7,077	14,147	21,939	74,955
Total Refund. Credit	Count	0	48	5	10	25	5	**	**	0	97
	Sum(\$,000)	.	11,482	64	1,396	9,586	57	**	**	.	23,616

See footnotes after Table 7

Table 4  
2016 Corporate Excise Returns by Industry and Massachusetts Taxable Income  
Business Corporations--Agriculture, Forestry Fishing and Hunting

		Range of Massachusetts Taxable Income						Total
		Zero	Up to \$100K	\$100K to \$1M	\$1M to \$10M	\$10M to \$25M	\$100M to \$500M	
Mass. Taxable	Count	0	169	39	14	**	**	224
Income	Sum(\$,000)	.	3,200	14,346	39,659	**	**	212,849
Non Income	Count	632	121	**	13	0	**	799
Excise	Sum(\$,000)	1,300	132	**	264	.	**	2,644
Income Excise	Count	0	146	**	14	**	**	191
	Sum(\$,000)	.	209	**	1,828	**	**	14,402
Excise Due	Count	1,088	**	39	14	**	**	1,312
	Sum(\$,000)	1,347	**	593	1,902	**	**	5,296
Exem. Prop.	Count	565	**	22	9	0	**	683
Sub. Loc. Tax	Sum(\$,000)	340,005	**	25,506	54,113	.	**	1,581,509
Econ. Dev.	Count	0	0	0	0	0	0	0
Inc. Pgm Cr	Sum(\$,000)	.	.	.	.	.	.	.
Econ. Opp.	Count	**	0	0	0	0	0	**
Area Credit	Sum(\$,000)	**	.	.	.	.	.	**
Renovation	Count	0	0	0	0	0	0	0
Deduction	Sum(\$,000)	.	.	.	.	.	.	.
Investment	Count	18	**	5	3	0	**	34
Tax Credit	Sum(\$,000)	12	**	33	192	.	**	2,676
Vanpool	Count	0	0	0	0	0	0	0
Credit	Sum(\$,000)	.	.	.	.	.	.	.
Research	Count	**	**	0	0	0	**	5
Credit	Sum(\$,000)	**	**	.	.	.	**	7,864
Harbor Main.	Count	0	0	0	0	0	0	0
Credit	Sum(\$,000)	.	.	.	.	.	.	.
Brownfields	Count	0	0	0	0	0	0	0
Credit	Sum(\$,000)	.	.	.	.	.	.	.
Low Income	Count	0	0	0	0	0	0	0
Hou. Credit	Sum(\$,000)	.	.	.	.	.	.	.
Historic	Count	0	0	0	0	0	0	0
Rehab. Credit	Sum(\$,000)	.	.	.	.	.	.	.
Community	Count	0	0	0	0	0	0	0
Inv. Credit	Sum(\$,000)	.	.	.	.	.	.	.
Housing Dev.	Count	0	0	0	0	0	0	0
Credit	Sum(\$,000)	.	.	.	.	.	.	.
Film Incent.	Count	0	0	0	0	0	0	0
Credit	Sum(\$,000)	.	.	.	.	.	.	.
Medical	Count	0	0	0	0	0	0	0
Device Credit	Sum(\$,000)	.	.	.	.	.	.	.
Wellness Pgm	Count	0	0	0	0	0	0	0
Credit	Sum(\$,000)	.	.	.	.	.	.	.
Life Sci.	Count	0	0	0	0	0	0	0
Credit	Sum(\$,000)	.	.	.	.	.	.	.
Credits	Count	**	0	0	0	0	**	**
Shared	Sum(\$,000)	**	.	.	.	.	**	**
Total Refund.	Count	**	**	0	**	0	0	8
Credit	Sum(\$,000)	**	**	.	**	.	.	489

See footnotes after Table 7

Table 4  
2016 Corporate Excise Returns by Industry and Massachusetts Taxable Income  
Business Corporations--Mining, Quarrying, and Oil and Gas Extraction

Range of Massachusetts Taxable Income								
		Zero	Up to \$100K	\$100K to \$1M	\$1M to \$10M	\$10M to \$25M	\$100M to \$500M	Total
Mass. Taxable	Count	0	**	7	13	**	**	38
Income	Sum(\$,000)	.	**	2,331	50,061	**	**	306,438
Non Income	Count	75	**	7	13	**	**	108
Excise	Sum(\$,000)	1,072	**	50	613	**	**	3,448
Income Excise	Count	0	15	**	13	**	**	37
	Sum(\$,000)	.	36	**	2,228	**	**	22,611
Excise Due	Count	145	**	7	13	**	**	183
	Sum(\$,000)	860	**	105	2,641	**	**	25,268
Exem. Prop.	Count	43	**	7	11	**	0	65
Sub. Loc. Tax	Sum(\$,000)	41,426	**	9,364	82,378	**	.	154,904
Econ. Dev.	Count	0	0	0	0	0	0	0
Inc. Pgm Cr	Sum(\$,000)	.	.	.	.	.	.	.
Econ. Opp.	Count	0	0	0	0	0	0	0
Area Credit	Sum(\$,000)	.	.	.	.	.	.	.
Renovation	Count	0	0	0	0	0	0	0
Deduction	Sum(\$,000)	.	.	.	.	.	.	.
Investment	Count	3	0	**	5	**	0	11
Tax Credit	Sum(\$,000)	10	.	**	237	**	.	631
Vanpool	Count	0	0	0	0	0	0	0
Credit	Sum(\$,000)	.	.	.	.	.	.	.
Research	Count	**	0	0	0	0	0	**
Credit	Sum(\$,000)	**	.	.	.	.	.	**
Harbor Main.	Count	0	0	0	0	0	0	0
Credit	Sum(\$,000)	.	.	.	.	.	.	.
Brownfields	Count	0	0	0	0	0	0	0
Credit	Sum(\$,000)	.	.	.	.	.	.	.
Low Income	Count	0	0	0	0	0	0	0
Hou. Credit	Sum(\$,000)	.	.	.	.	.	.	.
Historic	Count	0	0	0	0	0	0	0
Rehab. Credit	Sum(\$,000)	.	.	.	.	.	.	.
Community	Count	0	0	0	0	0	0	0
Inv. Credit	Sum(\$,000)	.	.	.	.	.	.	.
Housing Dev.	Count	0	0	0	0	0	0	0
Credit	Sum(\$,000)	.	.	.	.	.	.	.
Film Incent.	Count	0	0	0	0	0	0	0
Credit	Sum(\$,000)	.	.	.	.	.	.	.
Medical	Count	0	0	0	0	0	0	0
Device Credit	Sum(\$,000)	.	.	.	.	.	.	.
Wellness Pgm	Count	0	0	0	0	0	0	0
Credit	Sum(\$,000)	.	.	.	.	.	.	.
Life Sci.	Count	0	0	0	0	0	0	0
Credit	Sum(\$,000)	.	.	.	.	.	.	.
Credits	Count	0	0	0	0	0	0	0
Shared	Sum(\$,000)	.	.	.	.	.	.	.
Total Refund.	Count	0	0	0	0	0	0	0
Credit	Sum(\$,000)	.	.	.	.	.	.	.

See footnotes after Table 7



Table 4  
2016 Corporate Excise Returns by Industry and Massachusetts Taxable Income  
Business Corporations--Construction

Range of Massachusetts Taxable Income										
		Zero	Up to \$100K	\$100K to \$1M	\$1M to \$10M	\$10M to \$25M	\$25M to \$50M	\$50M to \$100M	\$100M to \$500M	Total
Mass. Taxable	Count	0	3,229	789	308	16	**	**	**	4,347
Income	Sum (\$,000)	.	66,036	275,249	791,908	227,014	**	**	**	1,861,366
Non Income	Count	9,270	2,181	675	295	16	**	**	**	12,442
Excise	Sum (\$,000)	3,529	1,079	2,749	4,300	1,752	**	**	**	15,344
Income Excise	Count	0	2,927	758	308	16	**	**	**	4,014
	Sum (\$,000)	.	3,931	10,721	29,882	12,224	**	**	**	86,908
Excise Due	Count	17,111	3,228	789	307	15	**	**	**	21,455
	Sum (\$,000)	9,832	5,436	13,195	32,960	12,340	**	**	**	105,408
Exem. Prop.	Count	7,902	1,229	563	266	13	**	**	**	9,978
Sub. Loc. Tax	Sum (\$,000)	1,322,277	204,163	420,683	371,771	209,594	**	**	**	2,801,678
Econ. Dev.	Count	0	0	0	0	0	0	**	0	**
Inc. Pgm Cr	Sum (\$,000)	.	.	.	.	.	.	**	.	**
Econ. Opp.	Count	0	**	0	0	0	0	0	**	**
Area Credit	Sum (\$,000)	.	**	.	.	.	.	.	**	**
Renovation	Count	**	0	0	0	0	0	0	0	**
Deduction	Sum (\$,000)	**	.	.	.	.	.	.	.	**
Investment	Count	10	**	6	5	**	0	0	0	25
Tax Credit	Sum (\$,000)	42	**	69	19	**	.	.	.	525
Vanpool	Count	0	0	0	0	0	0	0	0	0
Credit	Sum (\$,000)	.	.	.	.	.	.	.	.	.
Research	Count	14	**	13	20	**	0	**	0	58
Credit	Sum (\$,000)	61	**	225	1,171	**	.	**	.	1,844
Harbor Main.	Count	0	0	0	**	0	0	0	0	**
Credit	Sum (\$,000)	.	.	.	**	.	.	.	.	**
Brownfields	Count	0	0	0	0	**	0	0	0	**
Credit	Sum (\$,000)	.	.	.	.	**	.	.	.	**
Low Income	Count	0	0	0	0	0	0	0	0	0
Hou. Credit	Sum (\$,000)	.	.	.	.	.	.	.	.	.
Historic	Count	0	0	0	0	0	0	0	0	0
Rehab. Credit	Sum (\$,000)	.	.	.	.	.	.	.	.	.
Community	Count	0	0	**	**	0	0	0	0	**
Inv. Credit	Sum (\$,000)	.	.	**	**	.	.	.	.	**
Housing Dev.	Count	0	0	0	0	0	0	0	0	0
Credit	Sum (\$,000)	.	.	.	.	.	.	.	.	.
Film Incent.	Count	0	0	0	0	0	0	0	0	0
Credit	Sum (\$,000)	.	.	.	.	.	.	.	.	.
Medical	Count	0	0	0	0	0	0	0	0	0
Device Credit	Sum (\$,000)	.	.	.	.	.	.	.	.	.
Wellness Pgm	Count	0	0	**	0	0	0	0	0	**
Credit	Sum (\$,000)	.	.	**	.	.	.	.	.	**
Life Sci.	Count	0	0	0	0	0	0	0	0	0
Credit	Sum (\$,000)	.	.	.	.	.	.	.	.	.
Credits	Count	**	**	**	**	**	0	0	0	6
Shared	Sum (\$,000)	**	**	**	**	**	.	.	.	152
Total Refund.	Count	**	0	**	4	0	0	0	0	9
Credit	Sum (\$,000)	**	.	**	94	.	.	.	.	99

See footnotes after Table 7

**Table 4**  
**2016 Corporate Excise Returns by Industry and Massachusetts Taxable Income**  
**Business Corporations--Manufacturing**

		Range of Massachusetts Taxable Income								Total
		Zero	Up to \$100K	\$100K to \$1M	\$1M to \$10M	\$10M to \$25M	\$25M to \$50M	\$50M to \$100M	\$100M to \$500M	
Mass. Taxable	Count	0	1,866	1,117	650	43	14	11	7	3,708
Income	Sum (\$,000)	.	49,346	420,944	1,992,786	680,446	500,301	710,036	1,024,089	5,377,946
Non Income	Count	4,859	1,462	1,021	615	42	13	11	7	8,030
Excise	Sum (\$,000)	30,166	3,634	10,228	24,313	12,817	5,879	9,993	14,052	111,083
Income Excise	Count	0	1,795	1,106	648	43	14	11	7	3,624
	Sum (\$,000)	.	3,119	23,553	118,063	48,289	34,648	49,254	81,927	358,854
Excise Due	Count	6,945	1,866	1,117	650	43	14	11	7	10,653
	Sum (\$,000)	18,260	5,126	26,003	110,738	46,001	26,681	28,551	55,558	316,919
Exem. Prop.	Count	2,653	449	506	405	30	8	7	5	4,063
Sub. Loc. Tax	Sum (\$,000)	3,147,070	306,370	708,514	1,614,508	457,143	696,760	630,375	771,662	8,332,401
Econ. Dev.	Count	4	**	4	8	**	0	0	**	22
Inc. Pgm Cr	Sum (\$,000)	43	**	71	465	**	.	.	**	1,996
Econ. Opp.	Count	5	**	10	8	3	**	**	**	30
Area Credit	Sum (\$,000)	138	**	187	671	961	**	**	**	6,677
Renovation	Count	**	0	0	0	0	0	0	0	**
Deduction	Sum (\$,000)	**	.	.	.	.	.	.	.	**
Investment	Count	578	110	237	240	16	5	6	3	1,195
Tax Credit	Sum (\$,000)	3,662	903	3,023	10,812	3,815	1,427	4,725	1,299	29,665
Vanpool	Count	0	0	0	0	0	0	0	0	0
Credit	Sum (\$,000)	.	.	.	.	.	.	.	.	.
Research	Count	346	119	184	161	12	5	8	5	840
Credit	Sum (\$,000)	6,909	898	3,998	15,619	7,383	8,780	14,289	19,336	77,211
Harbor Main.	Count	8	3	3	6	0	0	0	0	20
Credit	Sum (\$,000)	47	24	22	83	.	.	.	.	177
Brownfields	Count	0	0	0	**	0	0	0	0	**
Credit	Sum (\$,000)	.	.	.	**	.	.	.	.	**
Low Income	Count	0	0	0	0	0	**	0	0	**
Hou. Credit	Sum (\$,000)	.	.	.	.	.	**	.	.	**
Historic	Count	0	0	0	**	0	0	0	0	**
Rehab. Credit	Sum (\$,000)	.	.	.	**	.	.	.	.	**
Community	Count	0	0	0	0	0	0	0	0	0
Inv. Credit	Sum (\$,000)	.	.	.	.	.	.	.	.	.
Housing Dev.	Count	0	0	**	**	0	0	0	0	**
Credit	Sum (\$,000)	.	.	**	**	.	.	.	.	**
Film Incent.	Count	0	0	**	**	0	0	0	0	**
Credit	Sum (\$,000)	.	.	**	**	.	.	.	.	**
Medical	Count	**	0	0	**	0	0	0	0	3
Device Credit	Sum (\$,000)	**	.	.	**	.	.	.	.	685
Wellness Pgm	Count	3	0	**	**	0	0	0	0	6
Credit	Sum (\$,000)	14	.	**	**	.	.	.	.	43
Life Sci.	Count	**	0	0	**	0	0	0	0	3
Credit	Sum (\$,000)	**	.	.	**	.	.	.	.	802
Credits	Count	52	9	20	37	6	4	5	4	137
Shared	Sum (\$,000)	4,109	165	542	3,757	4,131	2,975	10,644	16,026	42,349
Total Refund.	Count	7	0	**	**	0	0	0	0	10
Credit	Sum (\$,000)	4,248	.	**	**	.	.	.	.	5,749

See footnotes after Table 7

Table 4  
2016 Corporate Excise Returns by Industry and Massachusetts Taxable Income  
Business Corporations--Transportation and Warehousing

Range of Massachusetts Taxable Income										
		Zero	Up to \$100K	\$100K to \$1M	\$1M to \$10M	\$10M to \$25M	\$25M to \$50M	\$50M to \$100M	\$100M to \$500M	Total
Mass. Taxable	Count	0	1,051	176	58	5	**	**	**	1,295
Income	Sum (\$,000)	.	17,132	65,359	166,753	74,328	**	**	**	825,270
Non Income	Count	2,088	565	140	53	5	**	**	**	2,856
Excise	Sum (\$,000)	8,525	930	739	3,808	512	**	**	**	16,770
Income Excise	Count	0	962	165	57	5	**	**	**	1,194
	Sum (\$,000)	.	1,037	3,196	10,171	5,278	**	**	**	59,818
Excise Due	Count	4,900	1,051	176	58	5	**	**	**	6,195
	Sum (\$,000)	10,173	2,203	3,961	13,628	5,526	**	**	**	77,518
Exem. Prop.	Count	1,971	369	104	34	5	**	**	**	2,487
Sub. Loc. Tax	Sum (\$,000)	12,515,054	484,098	223,848	187,462	43,388	**	**	**	22,124,770
Econ. Dev.	Count	0	0	0	0	0	0	0	0	0
Inc. Pgm Cr	Sum (\$,000)	.	.	.	.	.	.	.	.	.
Econ. Opp.	Count	0	0	**	0	0	0	0	0	**
Area Credit	Sum (\$,000)	.	.	**	.	.	.	.	.	**
Renovation	Count	0	0	0	0	0	0	0	0	0
Deduction	Sum (\$,000)	.	.	.	.	.	.	.	.	.
Investment	Count	**	0	**	**	0	0	0	0	7
Tax Credit	Sum (\$,000)	**	.	**	**	.	.	.	.	372
Vanpool	Count	0	0	0	0	0	0	0	0	0
Credit	Sum (\$,000)	.	.	.	.	.	.	.	.	.
Research	Count	**	**	**	3	**	0	0	0	10
Credit	Sum (\$,000)	**	**	**	242	**	.	.	.	533
Harbor Main.	Count	0	0	0	0	0	0	0	0	0
Credit	Sum (\$,000)	.	.	.	.	.	.	.	.	.
Brownfields	Count	**	0	0	**	0	0	0	**	**
Credit	Sum (\$,000)	**	.	.	**	.	.	.	**	**
Low Income	Count	0	0	0	0	0	0	0	0	0
Hou. Credit	Sum (\$,000)	.	.	.	.	.	.	.	.	.
Historic	Count	0	0	0	0	0	0	0	0	0
Rehab. Credit	Sum (\$,000)	.	.	.	.	.	.	.	.	.
Community	Count	0	0	0	0	0	0	0	0	0
Inv. Credit	Sum (\$,000)	.	.	.	.	.	.	.	.	.
Housing Dev.	Count	0	0	0	0	0	0	0	0	0
Credit	Sum (\$,000)	.	.	.	.	.	.	.	.	.
Film Incent.	Count	0	0	0	**	0	0	0	0	**
Credit	Sum (\$,000)	.	.	.	**	.	.	.	.	**
Medical	Count	0	0	0	0	0	0	0	0	0
Device Credit	Sum (\$,000)	.	.	.	.	.	.	.	.	.
Wellness Pgm	Count	0	0	0	0	0	0	0	0	0
Credit	Sum (\$,000)	.	.	.	.	.	.	.	.	.
Life Sci.	Count	0	0	0	0	0	0	0	0	0
Credit	Sum (\$,000)	.	.	.	.	.	.	.	.	.
Credits	Count	0	0	0	**	0	0	0	0	**
Shared	Sum (\$,000)	.	.	.	**	.	.	.	.	**
Total Refund.	Count	0	0	**	**	0	0	0	0	**
Credit	Sum (\$,000)	.	.	**	**	.	.	.	.	**

See footnotes after Table 7

**Table 4**  
**2016 Corporate Excise Returns by Industry and Massachusetts Taxable Income**  
**Business Corporations--Wholesale Trade**

Range of Massachusetts Taxable Income										
		Zero	Up to \$100K	\$100K to \$1M	\$1M to \$10M	\$10M to \$25M	\$25M to \$50M	\$50M to \$100M	\$100M to \$500M	Total
Mass. Taxable	Count	0	**	876	328	36	8	9	**	3,084
Income	Sum (\$ ,000)	.	**	311,296	966,065	562,312	264,019	614,426	**	2,899,068
Non Income	Count	3,382	1,422	798	314	35	**	9	**	5,968
Excise	Sum (\$ ,000)	10,132	1,532	5,055	13,579	4,542	**	6,959	**	44,276
Income Excise	Count	0	1,767	870	328	36	**	9	**	3,019
	Sum (\$ ,000)	.	2,825	16,000	53,524	34,585	**	41,619	**	177,710
Excise Due	Count	5,273	**	875	328	36	8	9	**	8,356
	Sum (\$ ,000)	8,010	**	20,335	60,367	36,026	17,758	48,549	**	206,518
Exem. Prop.	Count	1,607	415	433	240	22	**	6	**	2,730
Sub. Loc. Tax	Sum (\$ ,000)	1,468,923	67,036	280,359	1,230,590	1,331,261	**	769,085	**	5,198,865
Econ. Dev.	Count	0	0	0	**	0	**	0	0	4
Inc. Pgm Cr	Sum (\$ ,000)	.	.	.	**	.	**	.	.	971
Econ. Opp.	Count	3	**	0	**	0	0	**	0	7
Area Credit	Sum (\$ ,000)	1,248	**	.	**	.	.	**	.	2,245
Renovation	Count	**	0	0	0	0	0	0	0	**
Deduction	Sum (\$ ,000)	**	.	.	.	.	.	.	.	**
Investment	Count	36	**	12	22	5	**	0	0	82
Tax Credit	Sum (\$ ,000)	274	**	121	1,142	357	**	.	.	2,434
Vanpool	Count	0	0	0	0	0	0	0	0	0
Credit	Sum (\$ ,000)	.	.	.	.	.	.	.	.	.
Research	Count	34	**	28	15	5	**	0	0	101
Credit	Sum (\$ ,000)	2,300	**	452	2,179	2,111	**	.	.	8,466
Harbor Main.	Count	12	**	12	15	**	**	0	0	45
Credit	Sum (\$ ,000)	58	**	54	237	**	**	.	.	681
Brownfields	Count	**	0	**	0	0	0	0	0	3
Credit	Sum (\$ ,000)	**	.	**	.	.	.	.	.	84
Low Income	Count	0	0	0	0	0	0	0	0	0
Hou. Credit	Sum (\$ ,000)	.	.	.	.	.	.	.	.	.
Historic	Count	**	0	**	**	0	0	0	0	5
Rehab. Credit	Sum (\$ ,000)	**	.	**	**	.	.	.	.	687
Community	Count	0	0	0	0	0	0	0	0	0
Inv. Credit	Sum (\$ ,000)	.	.	.	.	.	.	.	.	.
Housing Dev.	Count	0	0	0	**	0	0	0	0	**
Credit	Sum (\$ ,000)	.	.	.	**	.	.	.	.	**
Film Incent.	Count	**	0	**	**	**	0	0	0	**
Credit	Sum (\$ ,000)	**	.	**	**	**	.	.	.	**
Medical	Count	**	0	0	0	0	0	0	0	**
Device Credit	Sum (\$ ,000)	**	.	.	.	.	.	.	.	**
Wellness Pgm	Count	0	0	0	**	0	0	0	0	**
Credit	Sum (\$ ,000)	.	.	.	**	.	.	.	.	**
Life Sci.	Count	0	0	0	0	0	0	0	0	0
Credit	Sum (\$ ,000)	.	.	.	.	.	.	.	.	.
Credits	Count	8	**	3	9	3	0	**	0	26
Shared	Sum (\$ ,000)	455	**	86	1,506	152	.	**	.	2,246
Total Refund.	Count	0	0	0	3	0	0	0	0	3
Credit	Sum (\$ ,000)	.	.	.	7,768	.	.	.	.	7,768

See footnotes after Table 7

**Table 4**  
**2016 Corporate Excise Returns by Industry and Massachusetts Taxable Income**  
**Business Corporations--Retail Trade**

Range of Massachusetts Taxable Income										
		Zero	Up to \$100K	\$100K to \$1M	\$1M to \$10M	\$10M to \$25M	\$25M to \$50M	\$50M to \$100M	\$100M to \$500M	Total
Mass. Taxable	Count	0	2,180	663	202	24	6	6	5	3,086
Income	Sum (\$,000)	.	47,446	228,505	584,049	363,014	196,460	370,814	1,130,949	2,921,237
Non Income	Count	9,957	1,829	633	190	23	6	6	5	12,649
Excise	Sum (\$,000)	10,231	3,274	4,633	11,244	5,089	1,739	2,941	4,952	44,103
Income Excise	Count	0	2,009	641	201	24	6	6	5	2,892
	Sum (\$,000)	.	2,940	9,378	29,073	26,233	14,404	26,211	80,026	188,265
Excise Due	Count	13,017	2,180	663	202	24	6	6	5	16,103
	Sum (\$,000)	13,386	6,436	13,772	39,513	28,029	13,529	27,816	72,449	214,929
Exem. Prop.	Count	5,169	927	473	155	18	4	5	4	6,755
Sub. Loc. Tax	Sum (\$,000)	889,974	1,524,434	511,148	1,390,963	694,178	319,480	1,214,909	2,481,148	9,026,234
Econ. Dev.	Count	0	0	0	4	0	0	0	0	4
Inc. Pgm Cr	Sum (\$,000)	.	.	.	552	.	.	.	.	552
Econ. Opp.	Count	**	0	0	0	0	**	**	0	5
Area Credit	Sum (\$,000)	**	.	.	.	.	**	**	.	1,349
Renovation	Count	0	**	0	0	0	0	0	0	**
Deduction	Sum (\$,000)	.	**	.	.	.	.	.	.	**
Investment	Count	7	3	**	**	**	0	0	0	16
Tax Credit	Sum (\$,000)	152	6	**	**	**	.	.	.	348
Vanpool	Count	0	0	0	0	0	0	0	0	0
Credit	Sum (\$,000)	.	.	.	.	.	.	.	.	.
Research	Count	16	4	11	**	3	0	0	**	38
Credit	Sum (\$,000)	112	9	166	**	904	.	.	**	1,848
Harbor Main.	Count	3	0	**	**	**	**	0	0	8
Credit	Sum (\$,000)	38	.	**	**	**	**	.	.	215
Brownfields	Count	0	0	0	0	0	0	0	0	0
Credit	Sum (\$,000)	.	.	.	.	.	.	.	.	.
Low Income	Count	0	0	0	0	**	**	0	0	**
Hou. Credit	Sum (\$,000)	.	.	.	.	**	**	.	.	**
Historic	Count	0	0	0	0	0	0	0	**	**
Rehab. Credit	Sum (\$,000)	.	.	.	.	.	.	.	**	**
Community	Count	0	0	0	0	0	0	0	0	0
Inv. Credit	Sum (\$,000)	.	.	.	.	.	.	.	.	.
Housing Dev.	Count	0	0	0	0	0	0	0	0	0
Credit	Sum (\$,000)	.	.	.	.	.	.	.	.	.
Film Incent.	Count	0	0	**	0	0	**	0	**	**
Credit	Sum (\$,000)	.	.	**	.	.	**	.	**	**
Medical	Count	0	0	0	0	0	0	0	0	0
Device Credit	Sum (\$,000)	.	.	.	.	.	.	.	.	.
Wellness Pgm	Count	0	0	**	0	0	0	0	0	**
Credit	Sum (\$,000)	.	.	**	.	.	.	.	.	**
Life Sci.	Count	0	0	0	0	0	0	0	0	0
Credit	Sum (\$,000)	.	.	.	.	.	.	.	.	.
Credits	Count	**	0	**	**	**	0	0	0	6
Shared	Sum (\$,000)	**	.	**	**	**	.	.	.	2,189
Total Refund.	Count	0	**	**	**	0	0	0	0	4
Credit	Sum (\$,000)	.	**	**	**	.	.	.	.	727

See footnotes after Table 7

Table 4  
2016 Corporate Excise Returns by Industry and Massachusetts Taxable Income  
Business Corporations--Information

Range of Massachusetts Taxable Income											
		Missing	Zero	Up to \$100K	\$100K to \$1M	\$1M to \$10M	\$10M to \$25M	\$25M to \$50M	\$50M to \$100M	\$100M to \$500M	Total
Mass. Taxable Income	Count	0	0	587	171	88	13	10	3	3	875
	Sum(\$,000)	.	.	12,410	59,212	294,623	230,158	354,848	212,669	701,609	1,865,530
Non Income Excise	Count	0	1,680	388	133	81	12	9	**	**	2,307
	Sum(\$,000)	.	10,444	790	1,705	5,342	3,478	3,698	**	**	36,606
Income Excise	Count	0	0	555	168	87	13	10	3	3	839
	Sum(\$,000)	.	.	807	3,709	18,920	18,530	24,553	17,977	57,759	142,255
Excise Due	Count	**	3,308	**	171	88	13	10	3	3	4,183
	Sum(\$,000)	**	9,290	**	4,424	21,124	16,837	24,266	22,258	54,300	159,853
Exem. Prop. Sub. Loc. Tax	Count	0	537	50	38	36	4	3	**	**	671
	Sum(\$,000)	.	802,620	27,724	50,802	346,938	430	305,187	**	**	2,580,371
Econ. Dev. Inc. Pgm Cr	Count	0	0	0	0	0	0	0	0	0	0
	Sum(\$,000)	.	.	.	.	.	.	.	.	.	.
Econ. Opp. Area Credit	Count	0	**	0	0	0	0	0	0	**	**
	Sum(\$,000)	.	**	.	.	.	.	.	.	**	**
Renovation Deduction	Count	0	0	0	0	0	0	0	0	0	0
	Sum(\$,000)	.	.	.	.	.	.	.	.	.	.
Investment Tax Credit	Count	0	32	**	4	7	**	0	0	0	47
	Sum(\$,000)	.	401	**	43	78	**	.	.	.	668
Vanpool Credit	Count	0	0	0	0	0	0	0	0	0	0
	Sum(\$,000)	.	.	.	.	.	.	.	.	.	.
Research Credit	Count	0	99	**	16	16	6	4	0	**	166
	Sum(\$,000)	.	1,732	**	968	2,379	2,857	3,613	.	**	20,832
Harbor Main. Credit	Count	0	0	0	**	**	0	0	0	0	**
	Sum(\$,000)	.	.	.	**	**	.	.	.	.	**
Brownfields Credit	Count	0	0	0	0	0	0	0	0	0	0
	Sum(\$,000)	.	.	.	.	.	.	.	.	.	.
Low Income Hou. Credit	Count	0	0	0	0	0	0	0	0	0	0
	Sum(\$,000)	.	.	.	.	.	.	.	.	.	.
Historic Rehab. Credit	Count	0	0	0	0	0	0	0	0	0	0
	Sum(\$,000)	.	.	.	.	.	.	.	.	.	.
Community Inv. Credit	Count	0	0	0	0	0	0	0	0	0	0
	Sum(\$,000)	.	.	.	.	.	.	.	.	.	.
Housing Dev. Credit	Count	0	0	0	0	0	0	0	0	0	0
	Sum(\$,000)	.	.	.	.	.	.	.	.	.	.
Film Incent. Credit	Count	0	0	0	0	0	0	0	0	**	**
	Sum(\$,000)	.	.	.	.	.	.	.	.	**	**
Medical Device Credit	Count	0	0	0	0	0	0	0	0	0	0
	Sum(\$,000)	.	.	.	.	.	.	.	.	.	.
Wellness Pgm Credit	Count	0	0	0	0	**	0	0	0	0	**
	Sum(\$,000)	.	.	.	.	**	.	.	.	.	**
Life Sci. Credit	Count	0	0	0	0	0	0	0	0	0	0
	Sum(\$,000)	.	.	.	.	.	.	.	.	.	.
Credits Shared	Count	0	9	**	**	6	**	**	0	**	23
	Sum(\$,000)	.	257	**	**	696	**	**	.	**	3,930
Total Refund. Credit	Count	0	**	0	**	0	0	0	0	0	3
	Sum(\$,000)	.	**	.	**	.	.	.	.	.	72

See footnotes after Table 7

**Table 4**  
**2016 Corporate Excise Returns by Industry and Massachusetts Taxable Income**  
**Business Corporations--Finance, Insurance and Real Estate**

		Range of Massachusetts Taxable Income								Total
		Zero	Up to \$100K	\$100K to \$1M	\$1M to \$10M	\$10M to \$25M	\$25M to \$50M	\$50M to \$100M	\$100M to \$500M	
Mass. Taxable	Count	0	3,565	1,065	478	83	32	23	11	5,257
Income	Sum (\$,000)	.	66,121	387,747	1,479,666	1,316,711	1,102,765	1,564,962	2,051,965	7,969,936
Non Income	Count	9,636	2,168	612	280	39	19	12	5	12,771
Excise	Sum (\$,000)	37,870	4,328	9,236	13,899	8,682	5,077	5,974	1,044	86,109
Income Excise	Count	0	3,367	1,032	474	83	32	23	11	5,022
	Sum (\$,000)	.	4,405	20,972	88,125	82,765	80,258	122,182	103,856	502,563
Excise Due	Count	20,482	3,562	1,065	478	83	32	23	11	25,736
	Sum (\$,000)	45,599	9,329	30,238	96,156	87,793	78,357	113,382	84,100	544,955
Exem. Prop.	Count	7,048	864	275	124	21	5	6	3	8,346
Sub. Loc. Tax	Sum (\$,000)	42,699,457	8,609,063	13,895,719	1,937,559	1,295,163	720,221	1,119,684	217,973	70,494,838
Econ. Dev.	Count	0	0	0	0	0	0	0	0	0
Inc. Pgm Cr	Sum (\$,000)	.	.	.	.	.	.	.	.	.
Econ. Opp.	Count	0	0	0	**	0	0	0	0	**
Area Credit	Sum (\$,000)	.	.	.	**	.	.	.	.	**
Renovation	Count	0	0	0	0	0	0	0	0	0
Deduction	Sum (\$,000)	.	.	.	.	.	.	.	.	.
Investment	Count	7	**	5	9	**	**	**	0	26
Tax Credit	Sum (\$,000)	20	**	52	721	**	**	**	.	2,455
Vanpool	Count	0	0	0	0	0	0	0	0	0
Credit	Sum (\$,000)	.	.	.	.	.	.	.	.	.
Research	Count	23	12	6	16	3	**	**	**	65
Credit	Sum (\$,000)	195	14	68	2,421	245	**	**	**	7,162
Harbor Main.	Count	0	**	0	0	0	0	0	0	**
Credit	Sum (\$,000)	.	**	.	.	.	.	.	.	**
Brownfields	Count	0	0	0	0	**	0	0	0	**
Credit	Sum (\$,000)	.	.	.	.	**	.	.	.	**
Low Income	Count	0	0	0	0	**	3	4	**	10
Hou. Credit	Sum (\$,000)	.	.	.	.	**	3,112	4,013	**	18,095
Historic	Count	0	**	0	**	**	0	**	**	**
Rehab. Credit	Sum (\$,000)	.	**	.	**	**	.	**	**	**
Community	Count	0	0	**	**	4	**	**	0	9
Inv. Credit	Sum (\$,000)	.	.	**	**	33	**	**	.	237
Housing Dev.	Count	0	0	0	0	0	0	0	0	0
Credit	Sum (\$,000)	.	.	.	.	.	.	.	.	.
Film Incent.	Count	0	0	0	0	0	**	**	**	**
Credit	Sum (\$,000)	.	.	.	.	.	**	**	**	**
Medical	Count	0	0	0	0	0	0	0	0	0
Device Credit	Sum (\$,000)	.	.	.	.	.	.	.	.	.
Wellness Pgm	Count	0	0	0	**	0	**	0	0	**
Credit	Sum (\$,000)	.	.	.	**	.	**	.	.	**
Life Sci.	Count	0	0	0	0	0	0	0	0	0
Credit	Sum (\$,000)	.	.	.	.	.	.	.	.	.
Credits	Count	**	0	0	8	4	**	**	**	18
Shared	Sum (\$,000)	**	.	.	2,746	1,366	**	**	**	15,000
Total Refund.	Count	6	**	**	10	5	**	**	0	27
Credit	Sum (\$,000)	282	**	**	66	57	**	**	.	1,439

See footnotes after Table 7

**Table 4**  
**2016 Corporate Excise Returns by Industry and Massachusetts Taxable Income**  
**Business Corporations--Services**

		Range of Massachusetts Taxable Income							Total
		Zero	Up to \$100K	\$100K to \$1M	\$1M to \$10M	\$10M to \$25M	\$25M to \$50M	\$50M to \$100M	
Mass. Taxable Income	Count	0	9,916	1,802	528	48	7	6	12,307
	Sum(\$,000)	.	171,745	597,842	1,482,705	795,904	229,218	364,890	3,642,304
Non Income Excise	Count	33,445	6,452	1,493	467	41	7	5	41,910
	Sum(\$,000)	26,983	3,144	5,981	15,002	12,398	1,148	1,727	66,382
Income Excise	Count	0	9,128	1,705	528	48	7	6	11,422
	Sum(\$,000)	.	10,656	28,459	72,745	49,773	14,854	20,561	197,049
Excise Due	Count	57,345	9,916	1,802	528	48	7	6	69,652
	Sum(\$,000)	39,663	14,953	31,876	76,709	48,700	15,641	22,295	249,837
Exem. Prop. Sub. Loc. Tax	Count	18,182	2,372	765	257	18	5	3	21,602
	Sum(\$,000)	5,776,872	657,563	625,042	1,617,520	604,823	183,092	82,355	9,547,268
Econ. Dev. Inc. Pgm Cr	Count	**	0	**	**	0	0	0	4
	Sum(\$,000)	**	.	**	**	.	.	.	189
Econ. Opp. Area Credit	Count	**	0	**	0	0	0	0	4
	Sum(\$,000)	**	.	**	.	.	.	.	212
Renovation Deduction	Count	3	0	0	0	0	0	0	3
	Sum(\$,000)	0	.	.	.	.	.	.	0
Investment Tax Credit	Count	156	14	**	18	3	**	0	208
	Sum(\$,000)	1,544	273	**	952	1,151	**	.	4,160
Vanpool Credit	Count	0	0	0	0	0	0	0	0
	Sum(\$,000)	.	.	.	.	.	.	.	.
Research Credit	Count	584	**	119	78	16	**	0	913
	Sum(\$,000)	6,740	**	2,512	8,328	9,339	**	.	27,420
Harbor Main. Credit	Count	**	0	0	0	0	0	0	**
	Sum(\$,000)	**	.	.	.	.	.	.	**
Brownfields Credit	Count	0	0	0	0	0	0	0	0
	Sum(\$,000)	.	.	.	.	.	.	.	.
Low Income Hou. Credit	Count	0	0	0	0	0	0	0	0
	Sum(\$,000)	.	.	.	.	.	.	.	.
Historic Rehab. Credit	Count	0	0	0	0	0	0	0	0
	Sum(\$,000)	.	.	.	.	.	.	.	.
Community Inv. Credit	Count	0	0	0	0	0	0	0	0
	Sum(\$,000)	.	.	.	.	.	.	.	.
Housing Dev. Credit	Count	0	0	0	0	0	0	0	0
	Sum(\$,000)	.	.	.	.	.	.	.	.
Film Incent. Credit	Count	0	0	0	**	**	0	0	**
	Sum(\$,000)	.	.	.	**	**	.	.	**
Medical Device Credit	Count	0	0	0	0	0	0	0	0
	Sum(\$,000)	.	.	.	.	.	.	.	.
Wellness Pgm Credit	Count	**	**	**	3	0	0	0	8
	Sum(\$,000)	**	**	**	27	.	.	.	44
Life Sci. Credit	Count	3	0	0	0	0	0	0	3
	Sum(\$,000)	33	.	.	.	.	.	.	33
Credits Shared	Count	19	**	**	12	4	0	0	41
	Sum(\$,000)	643	**	**	2,168	3,666	.	.	6,513
Total Refund. Credit	Count	23	**	**	3	0	0	0	30
	Sum(\$,000)	6,529	**	**	715	.	.	.	7,250

See footnotes after Table 7



**Table 4**  
**2016 Corporate Excise Returns by Industry and Massachusetts Taxable Income**  
**Business Corporations--Other and Undefined**

		Range of Massachusetts Taxable Income					Total
		Missing	Zero	Up to \$100K	\$100K to \$1M	\$1M to \$10M	
Mass. Taxable Income	Count	0	0	162	68	20	250
	Sum(\$,000)	.	.	2,870	27,884	55,807	86,561
Non Income Excise	Count	0	178	65	21	7	271
	Sum(\$,000)	.	1,539	358	787	567	3,250
Income Excise	Count	0	0	144	65	19	228
	Sum(\$,000)	.	.	148	944	2,725	3,817
Excise Due	Count	**	594	**	68	20	844
	Sum(\$,000)	**	1,652	**	1,733	2,156	6,197
Exem. Prop. Sub. Loc. Tax	Count	**	83	16	6	**	108
	Sum(\$,000)	**	78,204	17,242	18,877	**	137,580
Econ. Dev. Inc. Pgm Cr	Count	0	0	0	0	0	0
	Sum(\$,000)	.	.	.	.	.	.
Econ. Opp. Area Credit	Count	0	0	0	0	0	0
	Sum(\$,000)	.	.	.	.	.	.
Renovation Deduction	Count	0	0	0	0	0	0
	Sum(\$,000)	.	.	.	.	.	.
Investment Tax Credit	Count	**	**	0	**	**	6
	Sum(\$,000)	**	**	.	**	**	259
Vanpool Credit	Count	0	0	0	0	0	0
	Sum(\$,000)	.	.	.	.	.	.
Research Credit	Count	0	0	0	0	**	**
	Sum(\$,000)	.	.	.	.	**	**
Harbor Main. Credit	Count	0	0	0	0	0	0
	Sum(\$,000)	.	.	.	.	.	.
Brownfields Credit	Count	0	0	0	0	0	0
	Sum(\$,000)	.	.	.	.	.	.
Low Income Hou. Credit	Count	0	0	0	0	0	0
	Sum(\$,000)	.	.	.	.	.	.
Historic Rehab. Credit	Count	0	0	0	0	0	0
	Sum(\$,000)	.	.	.	.	.	.
Community Inv. Credit	Count	0	0	0	0	0	0
	Sum(\$,000)	.	.	.	.	.	.
Housing Dev. Credit	Count	0	0	0	0	0	0
	Sum(\$,000)	.	.	.	.	.	.
Film Incent. Credit	Count	0	0	0	0	0	0
	Sum(\$,000)	.	.	.	.	.	.
Medical Device Credit	Count	0	0	0	0	0	0
	Sum(\$,000)	.	.	.	.	.	.
Wellness Pgm Credit	Count	0	0	0	0	0	0
	Sum(\$,000)	.	.	.	.	.	.
Life Sci. Credit	Count	0	0	0	0	0	0
	Sum(\$,000)	.	.	.	.	.	.
Credits Shared	Count	0	**	0	0	**	**
	Sum(\$,000)	.	**	.	.	**	**
Total Refund. Credit	Count	0	**	0	0	0	**
	Sum(\$,000)	.	**	.	.	.	**

See footnotes after Table 7

**Table 5**  
**2016 Financial Institution Excise Returns**

	Filed as FORM 63 FI	Filed as FORM 355U*	ALL
Total Number Reporting	205	345	550
Adjusted Taxable Income			
Number	133	275	408
Amount (\$000s)	175,635	3,055,519	3,231,154
Excise Due Before Credit			
Number	110	345	455
Amount (\$000s)	12,674	275,643	288,317
Credit Recapture			
Number	-	-	-
Amount (\$000s)	-	-	-
Economic Opportunity			
Area Credit			
Number	-	**	**
Amount (\$000s)	-	**	**
Economic Development Incentive Program Credit			
Number	-	**	**
Amount (\$000s)	-	**	**
Low Income Housing Credit			
Number	-	11	11
Amount (\$000s)	-	18,095	18,095
Historic Rehabilitation Credit			
Number	-	4	6
Amount (\$000s)	-	3,366	3,366
Film Credit			
Number	-	**	**
Amount (\$000s)	-	**	**
Medical Device Credit			
Number	-	-	-
Amount (\$000s)	-	-	-
Brownfields Credit			
Number	-	**	-
Amount (\$000s)	-	**	-
Employer Wellness Credit			
Number	**	-	-
Amount (\$000s)	**	-	-
Certified Housing Development Credit			
Number	-	-	**
Amount (\$000s)	-	-	**
Community Investment Credit			
Number	-	8	8
Amount (\$000s)	-	231	231
Life Science Company Credit			
Number	-	-	-
Amount (\$000s)	-	-	-
Total Refundable Credit			
Number	-	20	20
Amount (\$000s)	-	144	144
Excise Due Before Voluntary Contribution			
Number	200	345	545
Amount (\$000s)	12,709	247,783	260,492
Excise Due After Voluntary Contribution			
Number	200	345	545
Amount (\$000s)	12,709	247,783	260,492

See footnotes after table 7.

\* The numbers are already included in Corporate Excise Tables 1-4. Also the numbers are reported in parent level.

**Table 6**  
**2016 Public Service Company and Urban Redevelopment Organization Excise Returns**

	Filed as FORM PS - 1	Filed as Form 355U*	All Public Service Companies		Urban Redevelopment Organizations
Total Number Reporting	NA	NA	NA	Total Number Reporting	174
Apportioned Taxable Income				Gross Income From All Source	
Number	NA	NA	NA	Number	162
Amount (\$000s)	NA	NA	NA	Amount (\$000s)	164,052
Excise Due Before Voluntary Contribution				5% Tax on Gross Income	
Number	NA	NA	NA	Number	162
Amount (\$000s)	NA	NA	NA	Amount (\$000s)	8,203
Economic Opportunity Area Credit				Fair Cash Value of Property	
Number			NA	Exempt from Local Taxation	
Amount (\$000s)			NA	Number	167
Economic Development Incentive				Amount (\$000s)	1,779,150
Program Credit				1% Tax on Fair Cash Value	
Number			NA	Number	167
Amount (\$000s)			NA	Amount (\$000s)	17,791
Low-Income Housing Credit				Minimum Excise Based on Local	
Number			NA	Property Tax Rate	
Amount (\$000s)			NA	Number	83
Historic Rehabilitation Credit				Amount (\$000s)	2,066
Number			NA	Excise Due Before	
Amount (\$000s)			NA	Voluntary Contribution	
Home Energy Efficiency Credit				Number	168
Number			NA	Amount (\$000s)	26,396
Amount (\$000s)			NA	Voluntary Contribution	
Solar Heat Credit				for Endangered Wildlife Conservation	
Number			NA	Number	..
Amount (\$000s)			NA	Amount (\$000s)	..
Film Credit				Excise Due After	
Number			NA	Voluntary Contribution	
Amount (\$000s)			NA	Number	168
Medical Device Credit				Amount (\$000s)	26,396
Number			NA		
Amount (\$000s)			NA		
Brownfields Credit					
Number					
Amount (\$000s)					
Employer Wellness Credit					
Number			NA		
Amount (\$000s)			NA		
Life Science Company Credit					
Number					
Amount (\$000s)					
Voluntary Contribution					
Number			NA		
Amount (\$000s)			NA		
Excise Due After Voluntary Contribution					
Number	NA	NA	NA		
Amount (\$000s)	NA	NA	NA		

See footnotes after table 7.

\*: Form 355U lines are already reported in Corporate Excise Tables, and all subsidiaries were rolled into parents.

Note: The public utility excise, used to file G.L. c. 63, sec. 52A, was repealed and files under the general corporate excise provisions of G.L. c. 63 from year 2014.

**Table 7**  
**2016 Insurance Company Excise Return by Type of Return**

	Form 63-20P						Form 63-23P							
	Domestic		Foreign		Total		Domestic		Foreign		Preferred		Total	
	Number	Amount (\$000s)	Number	Amount (\$000s)	Number	Amount (\$000s)	Number	Amount (\$000s)	Number	Amount (\$000s)	Number	Amount (\$000s)	Number	Amount (\$000s)
Total Number Reporting					388								888	
Taxable Premiums:														
Life Insurance	11	417,949	294	3,066,130	305	3,484,079	N/A	N/A	N/A	N/A	N/A	N/A	N/A	N/A
Health and Accident	11	73,205	214	2,075,767	225	2,075,981	N/A	N/A	N/A	N/A	N/A	N/A	N/A	N/A
Other (Fair Plan & Crime Prevention)	N/A	N/A	N/A	N/A			26	1,759	145	124,859	N/A	N/A	171	126,618
Net Direct	N/A	N/A	N/A	N/A			41	5,171,302	568	8,832,285	N/A	N/A	609	14,003,587
Gross Premiums	N/A	N/A	N/A	N/A			N/A		N/A	N/A	34	2,080,066	34	2,080,066
Gross Investment Income	N/A	N/A	N/A	N/A			46	982,497	N/A	N/A	N/A	N/A	46	982,497
Net Value of Policies	**	**	N/A	N/A	**	**	N/A	N/A	N/A	N/A	N/A	N/A	N/A	N/A
Dividend Deduction	N/A	N/A	N/A	N/A			N/A	N/A	87	26,370	N/A	N/A	87	26,370
Tax Amount	12	9,497	314	102,838	326	112,335	47	121,072	563	203,622	34	47,425	644	372,119
Retaliatory Tax	N/A	N/A	54	368	54	368	N/A	N/A	80	251	N/A	N/A	80	251
Credit Recapture	..	..	..	..	..	..	..	..	..	..	..	..	..	..
Excise Before Credits	12	9,497	321	103,206	333	112,703	47	121,072	605	203,873	34	47,425	686	372,370
Retaliatory Surtax Credit	N/A	N/A	N/A	N/A	N/A	N/A	13	4,608	N/A	N/A	N/A	N/A	13	4,608
Initiative Credit					5	739	..	..	N/A	N/A	N/A	N/A	..	..
Credit for Investment in Mass. Capital Resource Co.					6	446	N/A	N/A	N/A	N/A	N/A	N/A	N/A	N/A
Credit on Assessments for Mass. Life and Health Insurance Guaranty Association					204	1,272							12	2
Economic Opportunity Area Credits					..	..							..	..
Economic Development Incentive Program Credit					**	**							**	**
Low-income Housing Credits					15	16,313							27	35,282
Historic Rehabilitation Credit					..	..							6	16,064
Film Incentive Credit					..	..							9	46,426
Medical Device Credit					..	..							..	..
Brownfields Credit					**	**							9	13,493
Wellness Program Credit													..	..
Certified Housing Development Credit					..	..							**	**
Life Science Credit					..	..							..	..
Excise Due After Credits					317	92,308							668	251,002
Excise Due After Voluntary Contribution					317	92,308							668	251,002
Total Refundable Credits					..	..							..	..

See footnotes after table 7.

## Footnotes to Tables

### All Tables

\*\*: Information withheld to maintain confidentiality.

### Abbreviations

Mass. Taxable Income

Massachusetts Taxable Income

Exem. Prop. Sub. Loc. Tax.

Exempt Property Subject to Local Taxation

Econ. Dev. Inc. Pgm Cr

Economic Development Incentive Program

Econ. Opp. Area Credit

Economic Opportunity Area Credit

Harbor Main. Credit

Harbor Maintenance Tax Credit

Low Income Hou. Credit

Low Income Housing Credit

Historic Rehab. Credit

Historic Rehabilitation Credit

Community Inv. Credit

Community Investment Credit

Housing Dev. Credit

Certified Housing Development Credit

Wellness Pgm Credit

Employer Wellness Program Credit

Film Incent. Credit

Film Incentive Credit

Life Sci. Credits

Combination of Life Science Credits

Credits Shared

Credits Taken Under Sharing Rules for Form 355 U Filers

Total Refund. Credit

Total Refundable Credits Credit (Refundable Film, Dairy, Life Science, Economic Development Incentive, Conservation Land and Community Investment Credits)

**Table 2**

\*To maintain confidentiality of tax return information, line item detail for corporations with negative gross receipts was combined with that for corporations with zero gross receipts. The line item details also include information on security corporations, which have a different tax structure than other corporations and are not required to provide information on gross receipts. (For year 2008 and earlier)

**Table 3**

\*The minimum corporate excise is \$456 for all corporations, including security corporations. However since 2009 some corporations used to be under MGL Chapter 62, section 8 (Corporate Trust), have started to file as business corporations with no minimum tax of \$456.

**Table 4**

\*Because losses were not included in the aggregate statistics of Massachusetts Taxable Income, ranges are only greater than or equal to zero for this year's report. The statistics also include information on security corporations, which have a different tax structure than other corporations and are not required to provide information on gross receipts.

**Table S2**

\*Since year 2009, some Financial Institutions and Utility Corporations have filed as part of combined reporting for corporation engaged in a unitary business. As a result of this change, some numbers on this table were not comparable before year 2009 and right after.

## Appendices

## **Appendix A: The Corporate Excise**

### **Description of Massachusetts Business Corporation Excise**

#### **PART 1: INCOME EXCISE**

1. **Gross Receipts or Sales**

A corporation's gross receipts or sales, less returns and allowances as stated on US Form 1120, line 1c (Massachusetts Form 355A, 355B, 355S-A, 355S-B, 355CA, 355CB, 355SBC, Schedule E, Item 1 before tax year 2000; Form 355, 355S, 355C, 355SBC for tax year 2001 and after. Starting year 2009 Form 355C was replaced by Form 355U).

2. **Gross Profit**

A corporation's gross receipts less cost of goods sold as shown on US Form 1120, line 3 (Schedule E, line 2).

3. **Federal Net Income**

Total income minus total deductions as stated on US Form 1120, line 28. More specifically, this item reflects a corporation's federal taxable income before net operating losses and special deductions are applied (Schedule E, Item 4).

4. **Income Subject to Apportionment**

Income subject to apportionment is federal net income with certain adjustments. A deduction equal to the amount of the US Jobs/Wages Credit is allowed. The following items which are excluded from federal net income must be included in income subject to apportionment:

- State and municipal bond interest (Schedule E, Item 7)
- Foreign, state or local income, franchise, excise or capital stock taxes (Schedule E, Item 8)
- Section 168(k) "Bonus" depreciation to disallowed (Schedule E, Item 9)
- Section 31I and 31K intangible expense add back adjustment (Schedule E, Item 10)
- Section 31J and 31K interest expense add back adjustment (Schedule E, Item 11)
- Federal Production activity add back adjustment (Schedule E, Item 12)
- Other adjustments (Schedule E, Item 13)

The following deductions are then subtracted from federal net income to arrive at income subject to apportionment:

- Abandoned building renovation deduction (Schedule E, Item 15)
- Allowable dividends deduction (Schedule E, Item 16)
- Exceptions to the add back of intangible expenses (Schedule E, Item 17)
- Exceptions to the add back of interest expenses (Schedule E, Item 18)

5. **Massachusetts Apportioned Income**

A corporation's Massachusetts apportioned income is determined by the sum of multiplying income subject to apportionment by the apportionment percentage (Schedule E, Item 21) and income not subject to apportionment (Schedule E, line 22).

6. **Massachusetts Taxable Income**

Income taxable in Massachusetts is determined by deducting the following amounts from Massachusetts apportioned income: the certified Massachusetts solar or wind power deduction (schedule E, item 24) and NOL deduction (Schedule E, Item 26).

7. **Income Excise**

A corporation's income excise is determined by multiplying its taxable income in Massachusetts by the applicable tax rate. For Corporations (Form 355), Combined Reporting Corporations (Form 355U) or Small Business (Form 355SBC), the tax rate was 8.00% in tax year 2016 (Computation of Excise, Item 3). If two or more corporations are organized as a combined corporate group, the income excise is reported by the principal reporting, or parent corporation only on FORM 355U. For businesses organized as S corporations (Form 355S), the income excise depends on the total income of the corporation (Computation of Excise, Item 4). If the total income is less than \$6 million, then there is no income excise levied. If total income is between \$6 and \$9 million, the tax rate was 1.9% in tax year 2016. If total income is \$9 million or more, the tax rate was 2.85% in tax year 2016 (Forms 355S, Excise Calculation, Item 6).

#### **PART 2: NON-INCOME EXCISE**



8a. **Taxable Massachusetts Tangible Property**

Applicable only to tangible property corporations. Generally, a tangible property corporation is a corporation which owns significant tangible property in the Commonwealth. A corporation is classified as a tangible property corporation if its qualifying Massachusetts property is 10% or more of its qualifying total Massachusetts assets apportioned according to the income apportionment percentage. Qualifying property is any property not subject to local taxation.

Taxable Massachusetts property is the net book value (cost minus allowable depreciation) of total Massachusetts tangible property minus exempt property. Exempt from Massachusetts tangible property is property subject to local taxation, as well as certified Massachusetts waste or air treatment facilities and certified solar or wind power facilities.

8b. **Taxable Net Worth**

Applicable only to intangible property corporations. Generally, an intangible property corporation is a corporation which owns insignificant tangible property in the Commonwealth. A corporation is classified as an intangible property corporation if its qualifying Massachusetts tangible property is less than 10% of its qualifying total Massachusetts assets apportioned according to the income apportionment percentage. Qualifying tangible property is any tangible property not subject to local taxation. Qualifying total Massachusetts assets are total assets less tangible property subject to local taxation in Massachusetts and also less investments in subsidiary corporations that are at least 80% owned.

If the corporation is classified as an intangible property corporation under the above formula, deductions are allowed against a corporation's net worth for the book value of tangible property subject to local taxation, less any mortgages on such property, and also for capital stock and equity investments in 80% owned subsidiary corporations. Prior to 2004, two different formulas existed to calculate both the tangible property percentage and taxable net worth and taxpayers. See TIR 00-01 and See TIR 04-29

9. **Non-Income Excise**

A corporation's non-income excise is determined by multiplying the value of either taxable tangible property or net worth by the tax rate of \$2.60 per \$1,000, or 0.26% (Excise Calculation, Items 1 or 2).

**TOTAL EXCISE**

10. **Excise Due**

Excise due is the larger of the following two items: the sum of the income, non-income excise and credit recaptures after deducting allowable tax credits, economic development incentive credit, economic opportunity area credit, 3% investment tax credit, the vanpool credit, the research credit, harbor maintenance tax credit, brownfields credit, low income housing credit, historic habilitation credit, film incentive credit, medical device credit, employer wellness program credit, life science credits and so on, as well as any credits carried forward from previous tax years; or the minimum excise of \$456. Since year 2009, some filers used to file as Income Tax Returns of Corporate Trust (FORM 3F) have filed Corporation Tax Returns, FORM 355 or FORM 355SC. Most of these filers have no minimum excise of \$456 requirement. Public Utilities excise tax returns filed in FORM 355U as combined reporting have also no minimum excise of \$456.

The credit recapture amount includes the amount of the investment tax credit recapture, economic opportunity area tax credit recapture; brownfields credit recapture, low-income housing credit recapture, vanpool credit and historic habilitation credit recaptures, etc.

In general, the maximum amount of tax credits which may be used in any one taxable year cannot exceed 50% of the excise imposed. (However, this 50% limitation does not apply to research and development credits.) A corporation may carry over and apply the remaining credits not allowed because of this limitation to the excise for any subsequent taxable year. Credits are not allowed to reduce a corporation's excise below the minimum tax.

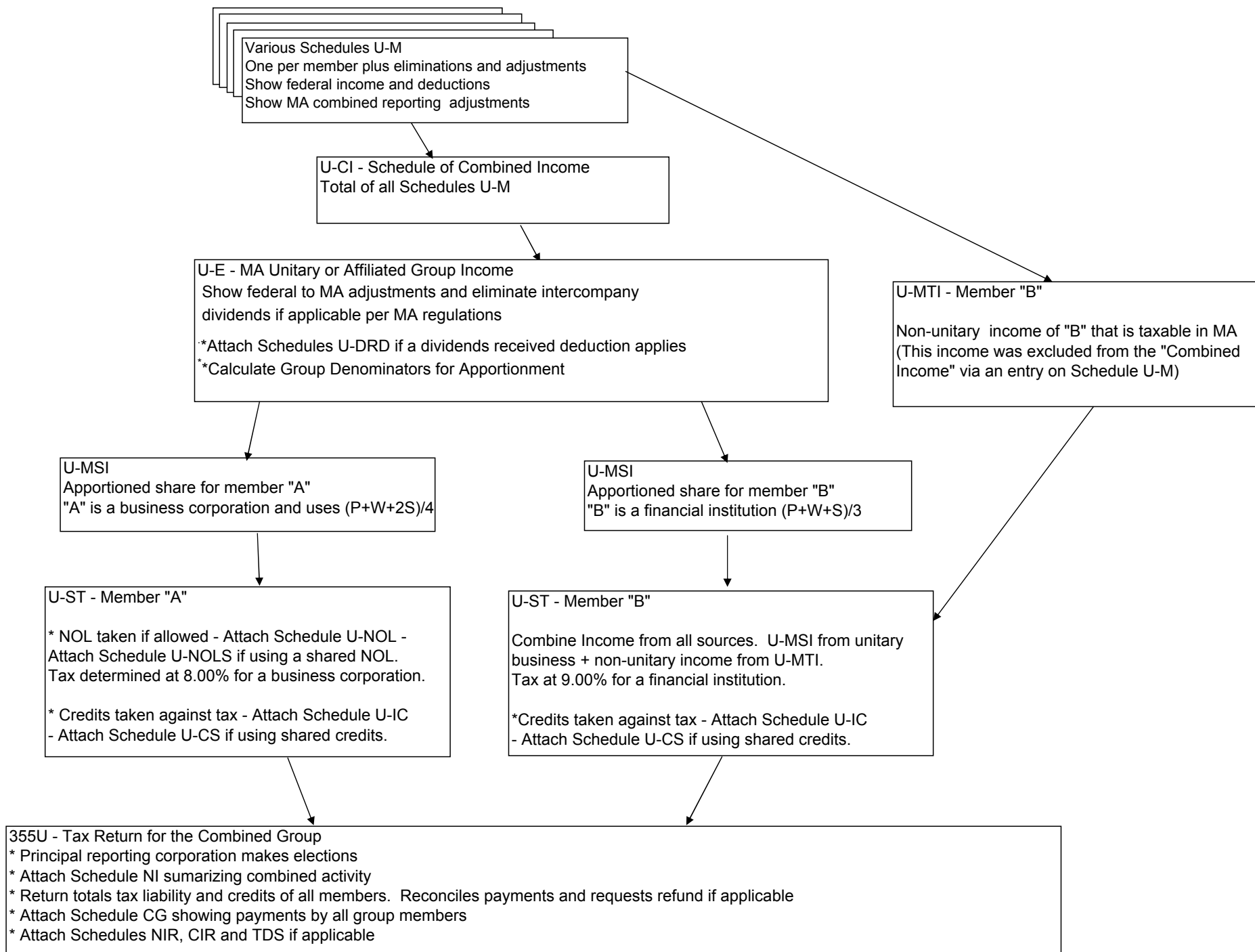
11. **Total Corporation Excise**

Total corporation excise is calculated by adding the voluntary contribution to the endangered wildlife conservation fund to excise due.

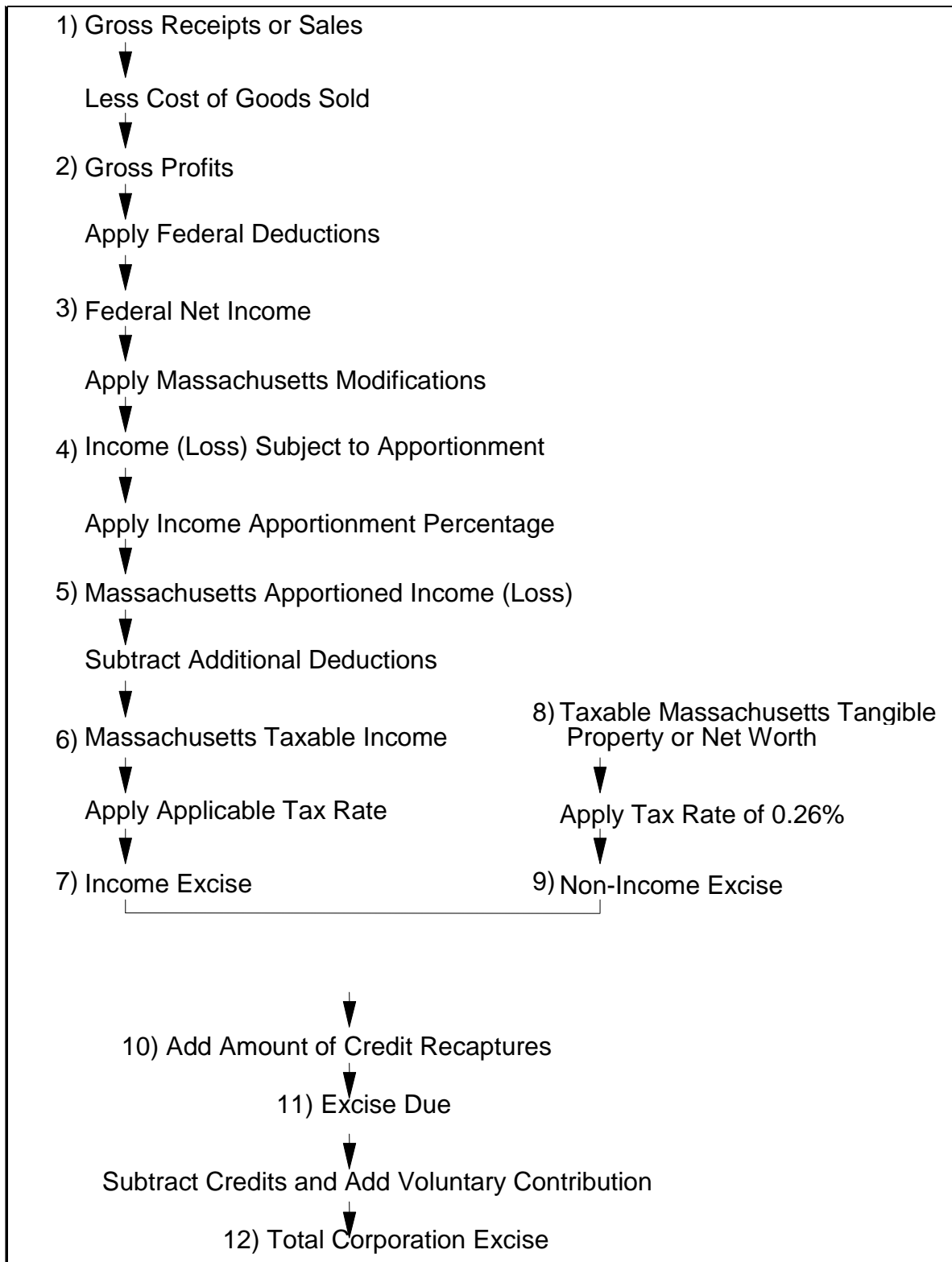
### **PART 3: FORM 355U: COMBINED REPORTING CORPORATE EXCISE**

For tax years beginning on or after January 1, 2009 Massachusetts requires certain corporations engaged in a unitary business to calculate their income on a combined basis. A corporation is subject to this requirement if it is subject to a tax on its income under Massachusetts General Law (M.G.L). c. 63, § 2, 2B, 32D, 39 or 52A and it is engaged in a unitary business with one or more other corporations under common control, whether or not the other corporations are taxable in Massachusetts. Form 355U is filed by the principal or parent corporation for income excise measures, and non-income measures are still filed via FORM 355 or FORM 355S.

Form 355U shows the aggregate income tax liability of the combined group. Most lines of FORM 355U are from the aggregation of related schedules. See the flowchart of schedule information next page.



**Chart A-1: Computation of Massachusetts Business Corporation Excise**



## **Appendix B: The Financial Institution Excise**

### **Description of Massachusetts Financial Institution Excise**

1. **Federal Net Income**

Total income minus total deductions as stated on US Form 1120, line 28. This item reflects a corporation's federal taxable income before net operating losses and special deductions are applied. Note that under the Internal Revenue Code, financial institutions are taxed as business corporations, not separately as under the Massachusetts General Law (Form 63 FI Schedule A, Item 2).

2. **Total Adjusted Taxable Income**

Federal net income adjusted for the different definitions of taxable income between the federal and state tax codes.

The following items must be added to federal net income to arrive at adjusted income (Schedule A, Item 11):

- State and municipal bond interest (Schedule A, Item 3)
- Foreign, state or local income, franchise, excise or capital stock taxes (Schedule A, Item 4)
- Net capital loss carryover used to reduce capital gains (Schedule A, Item 5)
- Section 168(k) "Bonus" depreciation disallowed (Schedule A, item 6)
- Other income (Schedule A, Item 7)
- Section 31I and 31J intangible and interest expenses (Schedule A, Item 8)
- Federal production activity add back (Schedule A, Item 9)
- Other adjustments (Schedule A, Item 10)

The total adjusted taxable income (Schedule A, Item 18) is equal to the above adjusted income subtracting the Abandoned Building Renovation Deduction (Schedule A, Item 12), Dividends Deduction (Schedule A, item 13), and Exceptions to the Add Back of Interest and/or Intangible Expenses (Schedule A, Item 14) then multiplied by the apportionment percentage (Schedule E, Item 5).

3. **Excise Due**

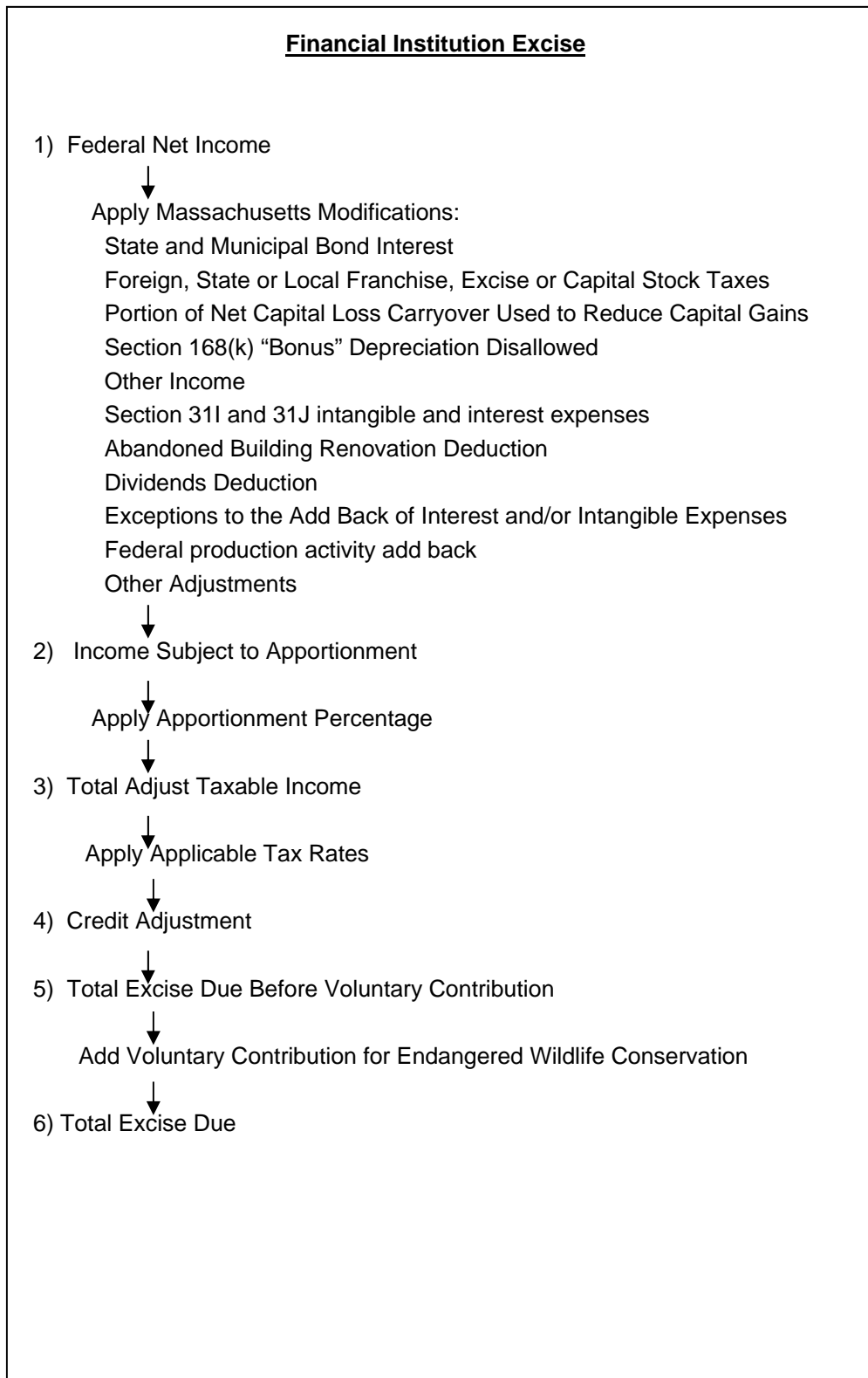
Excise is determined by multiplying total adjusted taxable income in Massachusetts by the applicable tax rate. For most financial institutions, the tax rate was 9.0% in tax year 2016 (Form 63 FI, Item 2). Under a new provision (c. 63, s. 2D), financial institutions that are S Corporations determine their excise using a tax rate of 3.85% for 2016 if total income is \$9 million or more and a tax rate of 2.57% if total income is between \$6 million and \$9 million. Financial institutions S Corporations with total income of less than \$6 million are not subject to an entity level income excise except where an entity level tax is applicable at the federal level under the Internal Revenue Code. Financial institutions included in a Massachusetts combined group use the same rates but their excise is reported by the principal reporting corporation on form 355U.

Excise due is equal to this excise plus Credit Recapture, minus the Economic Opportunity Credit, Economic Development Incentive program Credit, Low-income Housing Credit, Historic Rehabilitation Credit, Film Incentive Credit, Medical Device Credit, Brownfields Credit, Employer Wellness Credit and Life Science Credits etc. (Form 63 FI, Item 6, 7, 8, 9, 10, 11, 12, 13, 14, 15, 16, 18), but not less than minimum tax \$456.

4. **Total Excise Due After Voluntary Contribution**

The total excise due (Form 63 FI, Item 23) is calculated by adding any voluntary contribution to the Endangered Wildlife Conservation Fund (Form 63 FI, Item 21) to the excise due (Form 63 FI, Item 22).

**Chart B-1: Computation of the Financial Institution Excise**



## **Appendix C: The Public Service Corporation Excises**

### **Description of Massachusetts Public Service Corporation Excises**

The Public Service Corporation excises cover two different groups of organizations. The first is the utility corporations that provide gas, electric and water service, public transportation and telephone service to Massachusetts residents. The second group is the organizations involved in urban redevelopment projects.

*Utility Corporations (repealed in year 2014, and files under G.L. c. 63 now. The following paragraph has been kept for historic reference.)*

The companies file a Form P.S. 1 and pay an excise on their apportioned adjusted federal net income. The federal net income as calculated on the federal Form 1120 is used as the starting point and adjusted to conform to the Massachusetts definition of taxable income. The adjustments made are: add taxes paid to other jurisdictions which are subtracted from federal net income; add interest earned from state and municipal bonds; add the portion of net capital loss carryovers used to reduce capital gains (from US Form 1120, Schedule D); add Section 168(k) "Bonus" depreciation disallowed; add Section 311 and 31J intangible and interest expenses; add federal production activity add back; add other income not included above; subtract dividends received from other utility corporations for which 80% or more of voting stock is owned; subtract abandoned building renovation deduction; and subtract exceptions to the add back of interest and/or intangible expenses. This adjusted net income amount is then apportioned to reflect Massachusetts activity using an equally-weighted, three-factor formula based on payroll, property and sales. If only one or two of three factors apply, an equally-weighted one or two factor formula is used.

Once Massachusetts taxable income is calculated, a tax rate of 6.5% is applied. Total excise tax is then calculated by subtracting; the economic opportunity area credit; the economic development Incentive program credit; the low-income housing credit; historic rehabilitation credit; film incentive credit; medical device credit; brownfields credit; Employer Wellness Program Credit, life science credits and adding any voluntary contribution to the endangered wildlife conservation fund. Utility corporations do not face a minimum excise as do business corporations.

#### ***Urban Redevelopment Organizations***

Corporations, partnerships, trusts and individuals that redevelop a site in an urban area for reuse are subject to tax under Chapter 121A of the Massachusetts General Laws. They are required to annually file a Form 121A for this excise.

The excise consists of two parts. The first is a 5% tax on gross income from all sources, defined as payments received from persons for the right to reside in or occupy a portion of a redeveloped project less federal interest deduction payments. The second is a 1% tax on the fair cash value of owned or leased real and tangible personal property exempt from local taxation.

There is also a provision for a minimum tax based on the three-year average assessed value of owned or leased real and tangible personal property before it was made exempt from local taxation. The final excise due is the greater of the minimum excise and the excise based on gross income and fair cash value of property.

### **UTILITY CORPORATIONS**

#### **1. Federal Net Income**

Total income minus total deductions as stated on US Form 1120, line 28. More specifically, this item reflects a corporation's federal taxable income before net operating losses and special deductions are applied. Note that under the Internal Revenue Code, public utilities are taxed as business corporations, not separately as under the Massachusetts General Law (Form P.S. 1, Computation of Franchise Tax, Item 1).

#### **2. Total Income**

Federal net income adjusted for the different definitions of taxable income between the federal and state tax codes. The following items must be added to federal net income to arrive at total income (Computation of Franchise Tax, Item 9):

- State and municipal bond interest (Computation of Franchise Tax, Item 2)
- Foreign, state or local franchise, excise or capital stock taxes (Computation of Franchise Tax, Item 3)
- Net capital loss carryover used to reduce capital gain (Computation of Franchise Tax, Item 4)
- Section 168(k) "Bonus" depreciation disallowed (Computation of Franchise Tax, Item 5)
- Section 311 and 31J intangible and interest expenses (Computation of Franchise Tax, Item 6)

- Federal production activity add back (Computation of Franchise Tax, Item 7)
- Other income (Computation of Franchise Tax, Item 8)

3. **Adjusted Net Income**

Total Income determined above is adjusted for the receipt of dividends from utility companies of which at least 80% of the stock is owned by the utility corporation, the abandoned building renovation deduction, and exceptions to the add back of interest and/or intangible expenses. This is the amount of income that is subject to apportionment (Computation of Franchise Tax, Item 14).

4. **Massachusetts Taxable Income**

Adjusted net income is multiplied by the income apportionment percentage to determine the income taxable in Massachusetts (Computation of Franchise Tax, Item 16).

5. **Excise Due**

A utility corporation's excise is determined by multiplying its Massachusetts taxable income by the tax rate of 6.5%; plus any credit recapture; minus the economic opportunity area credit, the economic development incentive program credit, the low-income housing credit, historic rehabilitation credit, film incentive credit, medical device credit, brownfields credit, employer wellness program credit and life science credits (Computation of Franchise Tax, Item 30).

6. **Total Excise Due After Voluntary Contribution**

The total excise due is calculated by adding any voluntary contribution to the Endangered Wildlife Conservation Fund to the excise due (Computation of Franchise Tax, Item 32).

## URBAN REDEVELOPMENT ORGANIZATIONS

1. **Gross Income From All Sources**

This covers all income generated from the redeveloped site through payments made by persons for the right to reside in or occupy a portion or all of the project (Form 121A, Computation of Excise, Item 1A). Only federal interest deduction payments are permitted to reduce income according to this concept. This income is subject to a 5% tax (Computation of Excise, Item 1B).

2. **Fair Cash Value of Property Exempt From Local Taxation**

The fair cash value of owned or leased real and tangible property exempt from local taxation is also subject to tax (Computation of Excise, Item 2A). Such property deemed tax-exempt as of January 1, 2016 is subject to a state-level tax of \$10 per \$1,000 of value, or 1% (Computation of Excise, Item 2B).

3. **Excise Due Based on Income and Fair Cash Value**

This is the sum of the 5% tax on gross income and the 1% tax on the fair cash value of property exempt from local taxation (Computation of Excise, Item 3).

4. **Minimum Excise**

The minimum excise faced by urban redevelopment organizations is based on the three-year average fair cash value of property not subject to local taxation. The local tax rate from fiscal 2016 is applied to this average value to determine the minimum excise amount (Computation of Excise, Item 7).

5. **Total Excise Before Voluntary Contribution**

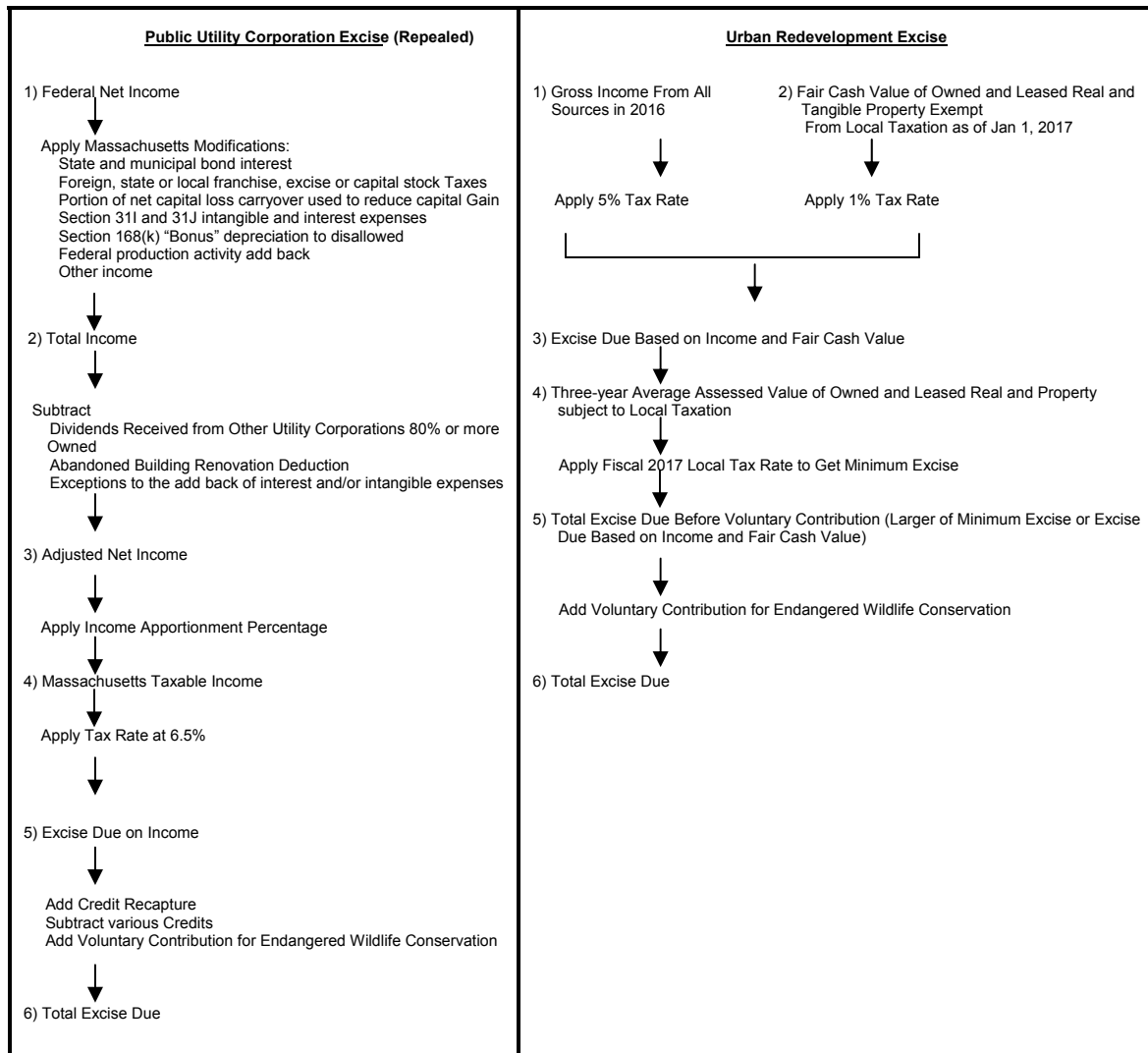
This is the larger of either the minimum excise or the excise based on income and fair cash value of property exempt from local taxation (Computation of Excise, Item 8).

6. **Total Excise Due**

The total excise due is calculated by adding any voluntary contribution to the Endangered Wildlife Conservation Fund to the excise due (Computation of Excise, Item 10).



### Chart C-1: Computation of the Massachusetts Public Service Organization Excises



## **Appendix D: The Insurance Company Excises**

### **Description of Massachusetts Insurance Excise**

In 2016, Massachusetts taxed insurance companies differently than other business corporations. Both the basis for taxation and tax rates differ among the various types of insurance companies -- life insurance companies, ocean marine and other insurance companies, and property and casualty companies.

#### **Determination of Excise**

##### *Life Insurance Companies*

In 2016, life insurance companies authorized to do business in the Commonwealth were subject to a premium-based excise.

##### **Premium Excise:**

The premiums-based excise is imposed on life and accident and health (A&H) premiums received during the preceding calendar year which are allocable to Massachusetts. (Premiums for approved Preferred Provider organizations are taxed separately. See Preferred Provider Organizations for details.) For foreign companies, life premiums are allocable to Massachusetts if the insured is a resident of Massachusetts. A&H premiums are allocable to Massachusetts if the premiums are paid to insure property or interest in the state. For domestic companies, all premiums are allocable if the insured is a resident of Massachusetts or a resident in a jurisdiction where no tax is paid by the insurance company. Like most states, Massachusetts exempts annuity premiums from taxation. Massachusetts also imposes retaliatory taxes on insurance companies based in states that impose retaliatory taxes on Massachusetts-based companies.

Certain adjustments must be made to net life and A&H premiums to determine the value of premiums taxable in the Commonwealth. Dividends paid by the insurance company to policyholders which are applied to purchase additional insurance or to shorten the premium paying period are generally not included in net premiums, and must be added to foreign and domestic life premiums and domestic accident and health premiums. However, deductions are allowed for these dividends.

The Commonwealth allows other dividend-related deductions: deductions for dividends paid by the insurance company to policyholders which are either paid in cash, applied to future premiums, or left to accumulate interest. A deduction is also allowed for premiums returned to policyholders (not including cash surrender values).

Domestic corporations are allowed an additional deduction for premiums for employee group life and accident and health plans.

The excise on taxable life and accident and health premiums is calculated at a 2.00% rate. Foreign insurers are liable for the larger of the excise as calculated according to retaliatory provisions, or the excise calculated according to Massachusetts provisions as described above.

All insurance companies that are authorized to do business in the Commonwealth are entitled to a credit as members of the Massachusetts Life and Health Insurance Guaranty Association. The Massachusetts Life and Health Insurance Guaranty Association was established to protect policyholders against the insolvency of member insurers by assuming the obligations of a member insurer that cannot meet its contractual obligations. In order to carry out its duties, the Association assesses its members for certain costs. However, members are allowed a credit against their excise equal to 10% of assessments for five calendar years. In effect, the credit provides an offset of 50% of the Association's assessments over a five-year period. The credit is limited to \$3 million for all member insurers for a calendar year.

The credit is based on the annual assessment in the prior year, with the assessments for 1991 being the first year eligible for this credit.

Domestic life insurers can also claim a credit against their premium excise equal to 1.5% of the company's proportionate share of the cost of certain investments in the Massachusetts Capital Resource Company. The Massachusetts Capital Resource Company was established in 1977 to provide capital financing for businesses, and was funded through assessments on domestic life insurers.

Premiums excise due is the premium excise (or, for foreign insurers, an excise calculated according to retaliatory provision) less allowable credits. Since 1989, insurance companies can also make a voluntary contribution for endangered wildlife conservation.

Investment Privilege:

From 2004, domestic insurers were no longer subject to an investment privilege excise.

#### *Other Insurance Companies*

Life insurers and insurance companies engaged in ocean marine business are subject to taxation in the Commonwealth under separate provisions of the law. All other insurers, primarily property and casualty insurers, are subject to taxation based on the amount of premiums subject to tax in Massachusetts. Domestic insurers are liable for an additional excise on investment income.

Premium Excise:

Insurers taxable under these provisions are subject to an excise based on the amount of net direct premiums subject to tax in Massachusetts. Net direct premiums are, for Massachusetts purposes, gross premiums adjusted for certain other items such as additional assessments made on policyholders. Premiums and charges are subject to tax in Massachusetts if, for foreign corporations, the premiums relate to property or interests in Massachusetts or, for domestic corporations, if premiums are written in Massachusetts or in a jurisdiction where no tax is paid.

Both domestic and foreign insurers are allowed a deduction for premiums which are returned or credited to policyholders in Massachusetts as dividends. Net premiums, less the dividend deduction, are taxed at a 2.28% rate. Earnings from the Massachusetts Property Insurance Underwriting Association and Crime Insurance Program ("Fair Plan" programs), which companies doing business in Massachusetts are required to participate in, are also subject to tax at the 2.28% rate.

Investment Income Excise:

Domestic insurers are also subject to an excise on gross investment income. Gross investment income includes all interest earned on bonds, loans and cash, on dividends, on real estate, and on other invested assets. In 2016, either a 1.00%, 0.8%, 0.6%, 0.4%, 0.2% or 0.0% tax rate was applied to a domestic insurer's gross investment income, depending on whether a company had contributed its full proportionate share to the Property and Casualty Initiative since January 1999.

Both foreign and domestic companies are entitled to a tax credit as members of the Massachusetts Life and Health Insurance Guaranty Association. Members are allowed a credit against their excise equal to 10% of assessments for five calendar years. In effect, the credit provides an offset of 50% of the Association's assessments over a five-year period. The credit is limited to \$3 million dollars for all member insurers for a calendar year.

Foreign insurers are liable for the larger of the excise as calculated according to retaliatory provisions, or the excise calculated according to Massachusetts provisions as described above.

### *Preferred Provider Organizations*

Since 1989, premiums generated by authorized preferred provider organizations have been taxed separately from other accident and health premiums. Preferred provider organizations are those organizations that offer or administer a health benefit plan under a preferred provider arrangement as authorized by the Commissioner of Insurance. The Commonwealth taxes gross premiums generated by these organizations for coverage of Massachusetts residents, net of premiums returned or credited to policyholders as dividends, at a 2.28% rate.

### *Ocean Marine Business*

Profits earned on ocean marine business are subject to a separate excise in Massachusetts. For purposes of this excise, ocean marine business means, in general, premiums related to the insurance of goods that are exported, imported, or transported by ocean.

The excise on ocean marine business is calculated based on a three-year average of net underwriting profits. Net underwriting profits are determined using total net premiums written in the United States during the taxable year as a starting point, and subtracting unearned premiums. Deductions are also allowed for losses incurred, net expenses, dividends, and federal income tax owed to arrive at net underwriting profit.

The average of the previous three-years' net underwriting profit is apportioned to Massachusetts using a ratio of the 3-year average of ocean marine business written in the Commonwealth to the three-year average of ocean marine business written in the United States. A 5.7% rate is applied to taxable profits to determine excise due in the Commonwealth.

**Chart D-1: Summary of 2016 Tax Forms for Insurance Companies**

Tax Form	Type of Company	Foreign or Domestic	Base of Tax	Tax Rate	Retaliatory Tax Provision
63-20P	Life Insurance	Domestic	Taxable life, accident and health insurance premiums, net value of policies	2% on life and acc./health ins. premiums, .25% on net value	N/A
	Life Insurance	Foreign	Taxable life insurance premiums attributable to Massachusetts, accident and health insurance premiums	2% on all premiums	Yes
63-23P	Insurance Companies, except Life Insurance or Ocean Marine	Domestic	Taxable (non-life) insurance premiums and gross investment income	2.28% on premiums, 1%, 0.8%, 0.6%, 0.4%, 0.2% or 0.0% on investment income	N/A
	Insurance Companies, except Life Insurance or Ocean Marine	Foreign	Taxable premiums for insurance of property or interests attributable to Massachusetts	2.28%	Yes
	Preferred Providers (Accident and Health Insurers, Nonprofit Hospitals, HMO's, and other nonprofit medical, optometric or dental companies)	Domestic and Foreign	Gross premiums for coverage of persons who reside in Massachusetts	2.28%	N/A