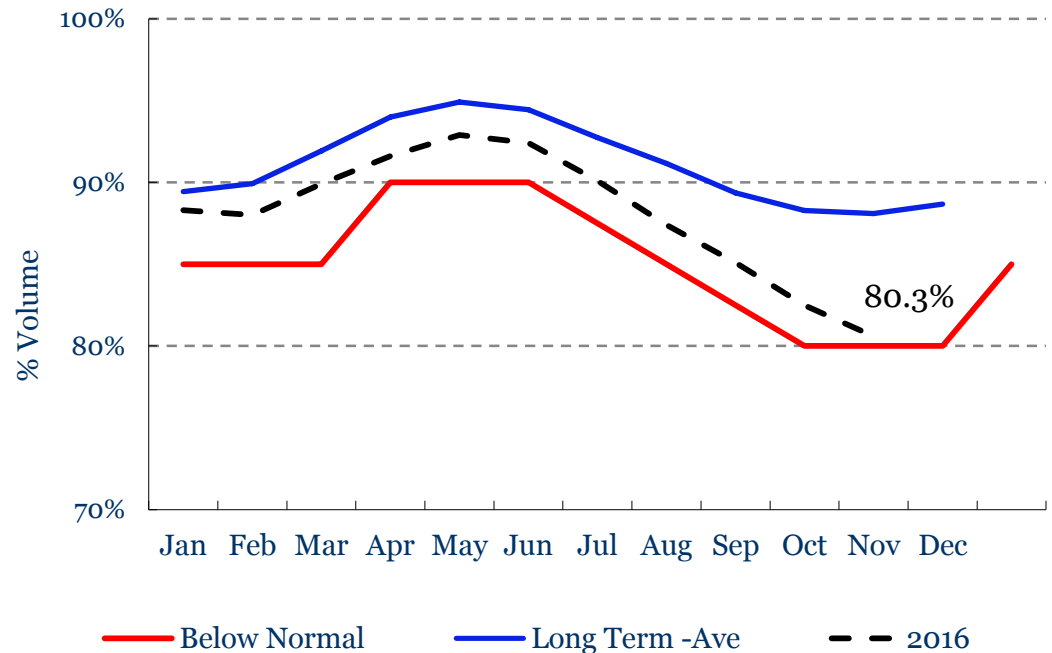




Quabbin Status as of Nov. 7, 2016

- Current Elevation: 519.20 ft
- Current Volume: 330,860 MG (80.3%)
- At current capacity Quabbin can supply the system's current demand* for 4.9 years

Quabbin Reservoir



* Calculated using an average daily demand of 200 MGD



Quabbin Reservoir Projections – November 2016

Quabbin Reservoir levels have been modeled for the next 12 months (November 2016 – October 2017) given varying yield conditions, and our current annual demand of 210 mgd. It should be noted that October 2016 was the 7th driest October in the 68 year history of Quabbin yields. The monthly yield for October 2016 was -804.3 MG.

Table 1: Quabbin Reservoir Status with Varying Reservoir Yield Scenarios Looking Forward from October 1, 2016

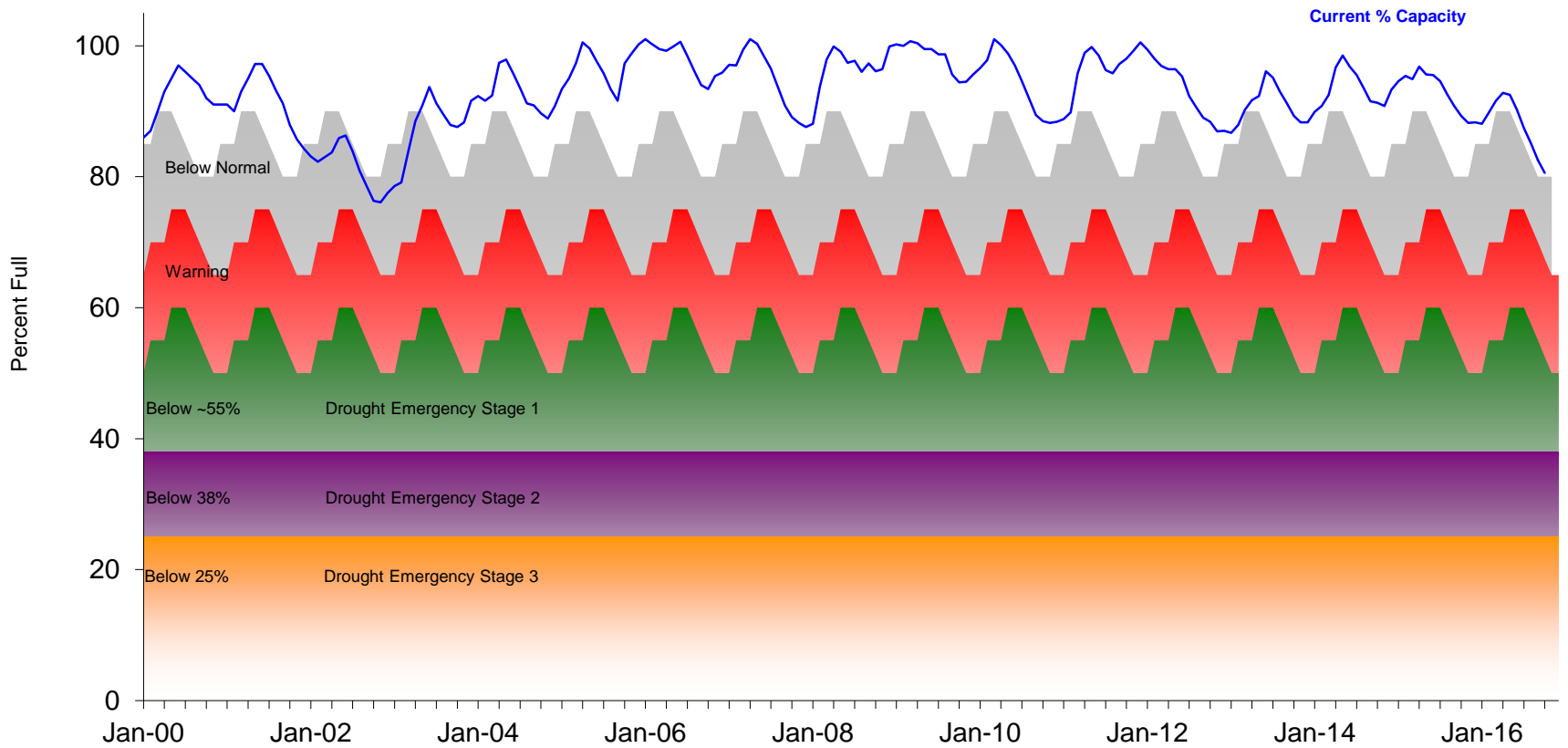
Evaluating a 24-month scenario using the driest conditions, Quabbin Reservoir would not fall into the *Drought Warning* Stage Level.

	1-Month	3-Months	6-Months	12-Months
Median Yield	Normal	Below Normal	Normal	Normal
Dry (75th Percentile)	Normal	Below Normal	Below Normal	Normal
Driest (of Record)	Below Normal	Below Normal	Below Normal	Below Normal



Quabbin Reservoir Levels relative to Drought Stages

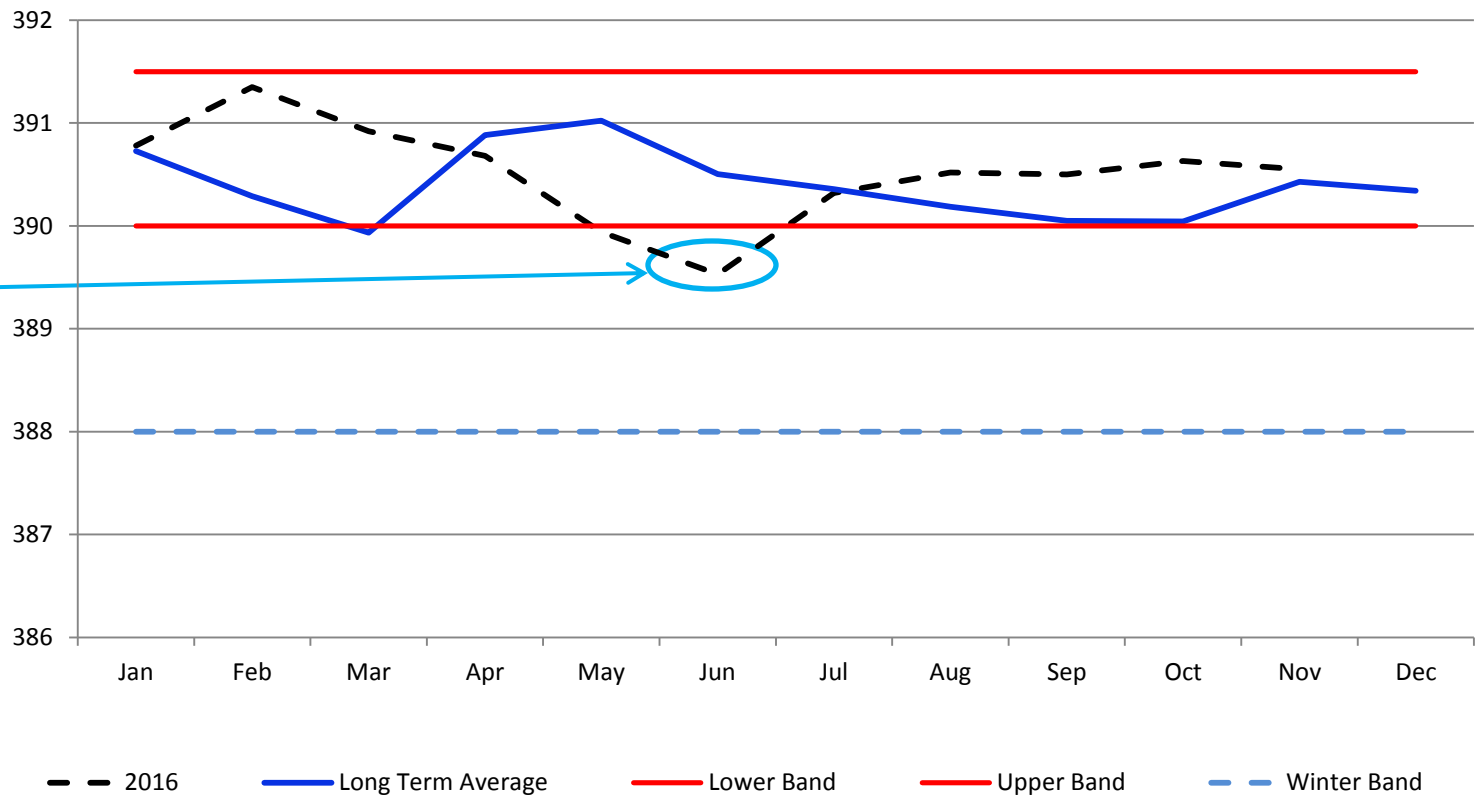
Quabbin Reservoir Levels
With Drought Emergency Planning Stages





Wachusett Reservoir Status – Normal operations

Wachusett Reservoir

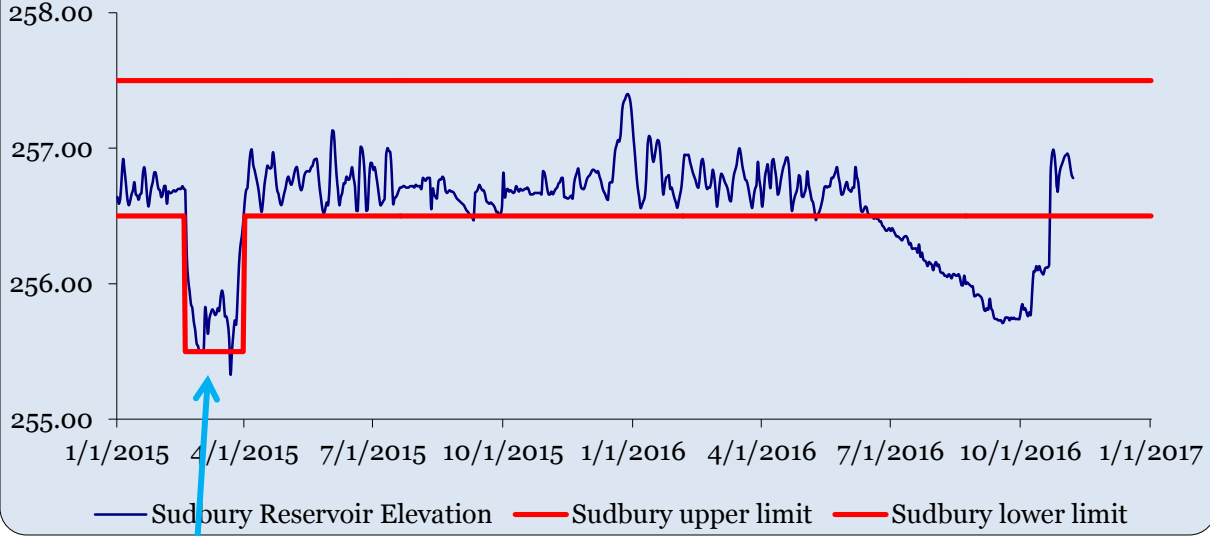


Drawdown for construction project



Sudbury System Elevations – recovery in drought conditions

Sudbury Reservoir



Winter drawdowns suspended for 2016/17 season due to drought conditions.

Winter drawdown for record snowpack

Winter drawdown for invasives plants control

Foss Reservoir

