



**Town of Weymouth**  
**Municipal Vulnerability Preparedness Program**  
**Summary of Findings Report**  
Revised June 28, 2018

**Executive summary**

Weymouth's top four natural hazards this century are coastal flooding and sea level rise; extreme storms causing inland flooding; more days of extreme heat; and extended droughts in the autumn. Key stakeholders from the community convened in February 2018 in a workshop to discuss Weymouth's assets, vulnerabilities, and actions to improve resilience to these hazards. The workshop resulted in the following prioritized list of top recommendations for improving resilience. (1) Restoring and expanding aging coastal protection, such as sea walls, is the top priority and warrants further study of the level of protection, flood potential, and coastal land use. (2) Assessing threatened infrastructure is recommended in relation to storms and sea level rise, including sewage pump stations, evacuation routes, storm gates, and low-lying roadways. (3) Investing in improved storm water management and addressing areas with poor drainage is a top concern. (4) A communications plan for raising awareness about the hazards on a sub-community level combined with emergency communication is a priority. (5) Protecting the public water supply and critical environmental resources through conservation tools is a top priority for building resilience.



## Town of Weymouth

### Municipal Vulnerability Preparedness Program

#### Summary of Findings Report

## OVERVIEW

### About the Municipal Vulnerability Preparedness Program

Risks of the past are not the risks of the future. Building resilience is about learning to adapt as changes take place. The Municipal Vulnerability Preparedness (MVP) program was created in September 2016 by Executive Order 569 ("Establishing an Integrated Climate Change Strategy for the Commonwealth") to continue Massachusetts' effort to plan for resiliency. The Order instructs state government to help communities throughout the Commonwealth to complete climate change vulnerability assessments and resiliency planning. Communities who complete the MVP program will become certified as an MVP community and be eligible for follow-up grant funding and other opportunities.

At the Municipal Climate Change Summit on September 12, 2017, Governor Baker, with Energy and Environmental Affairs (EEA) Secretary Matthew Beaton, Transportation Secretary and CEO Stephanie Pollack, and Secretary of Public Safety and Security Daniel Bennett, emphasized the Administration's commitment to implementing the Order. They urged federal, state, and local leaders to work collaboratively with public and private partners to implement small, community changes that will collectively reduce and mitigate emissions, safeguard residents, municipalities and businesses from the impacts of climate change, and create a more resilient Commonwealth.

Weymouth applied for the MVP grant program and, along with 70 other communities, was awarded an MVP grant to continue planning for the impacts of climate change. As determined by the Commonwealth, the planning process applies the Community Resilience Building<sup>1</sup> (CRB) Workshop framework. CRB is an "anywhere at any scale" process for developing action-oriented plans to help communities adapt to extreme weather and natural and climate-related hazards. The CRB framework is rooted in the community experiences of The Nature Conservancy, NOAA's Office for Coastal Management, and other partners. CRB employs a community-driven process, infused with information, experience, and dialogue, where participants identify top hazards, current challenges and strengths, and then develop and prioritize actions to improve their community's resilience. CRB's core directive is to foster collaboration with and among community stakeholders that will advance the education, planning, and ultimately implementation of priority actions. The process is centered on the completion of a risk matrix<sup>2</sup> that captures and organizes community dialogue and helps to generate the momentum needed to advance a community's resiliency plan. With the results of this process, Weymouth can establish mitigation, adaptation, and resilience strategies for vulnerable residents and businesses.

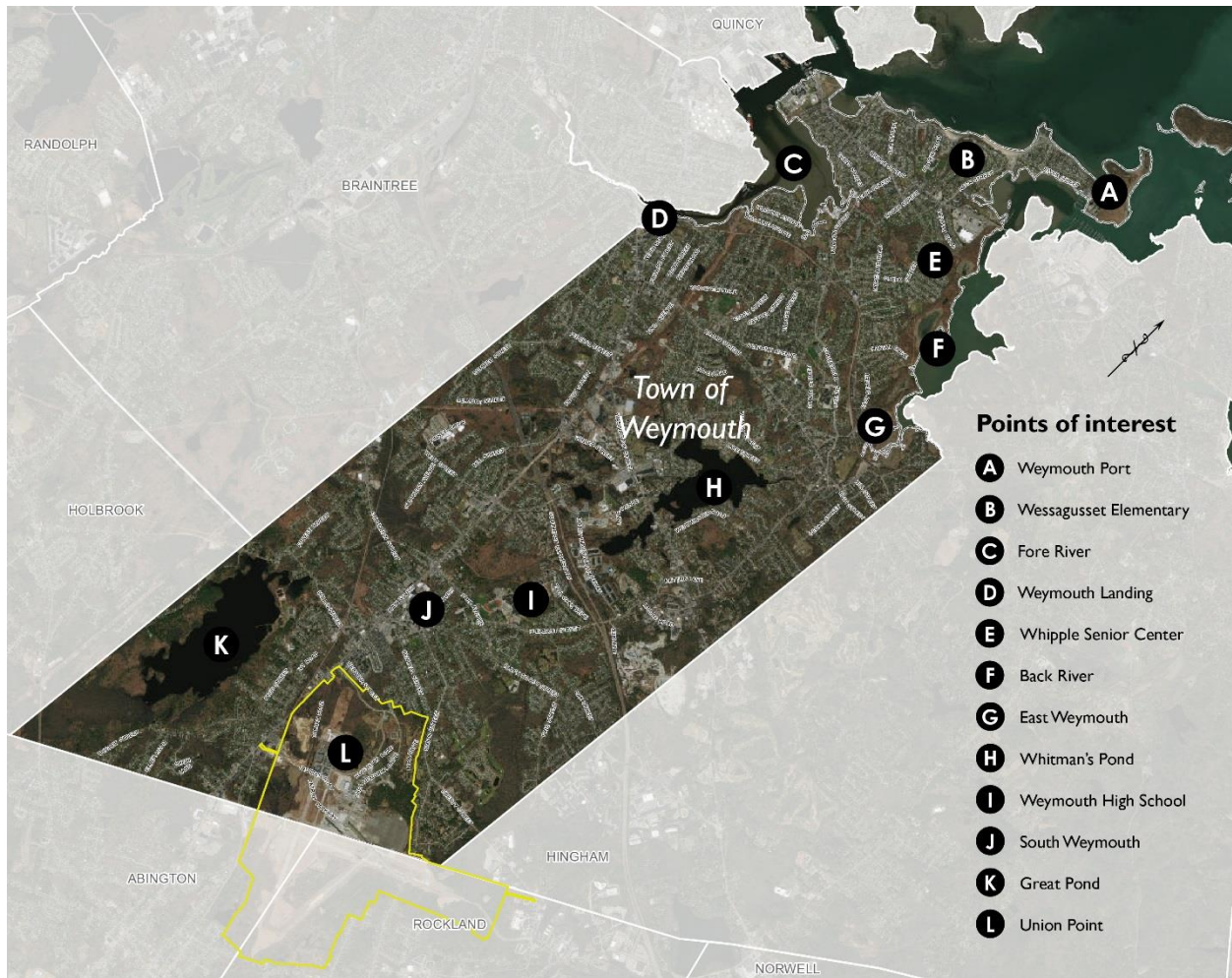
### About Weymouth

Weymouth is a coastal community southeast of Boston and Quincy and west of Hingham. The coastline in North Weymouth is bounded by two rivers, the Fore River and the Back River. The lower Fore River is a major industrial hub for the region and includes an official Designated Port Area. The upper Fore River is bounded mostly by residential uses and salt marshes. The Fore River begins at Weymouth Landing, where the Monaquot River joins Smelt Brook in the vicinity of the Weymouth Landing MBTA station. The Back River is an estuary with Area of Critical

---

<sup>1</sup> Learn more at <https://www.communityresiliencebuilding.com/>

<sup>2</sup> The completed risk matrix can be found in Appendix 2



Environmental Concern (ACEC) designation, salt water marshes, recreation trails and one of the state's most productive river herring runs. A collection of maps describing various aspects of Weymouth are in Appendix 3.

Weymouth is generally divided into four areas: North Weymouth, Weymouth Landing, East Weymouth, and South Weymouth. Each of these four areas has its own post office and zip code. Within these areas are additional villages and squares, such as Bicknell Square, Jackson Square, and Columbian Square.

In Weymouth Landing, on the Town's west border with Braintree, the US Army Corps of Engineer's Smelt Brook Local Protection Project provides flood protection and a fish gate for rainbow smelt. In East Weymouth, the Herring Brook/Back River fish run passes hundreds of thousands of herring each spring, through Jackson Square and six fish ladders, up to the historic spawning ground at Whitman's Pond. On the Town's southern border, a former naval airbase is being redeveloped into Union Point, a large mixed-use center straddling three municipalities. Union Point is both exciting due to the economic development potential, and concerning due to the potential addition to population, increased demands on public water and sewer, and potential floodplain management issues.

## Planning Process

Stantec interviewed key stakeholders including city staff, board and commission members, and representatives of environmental organizations in December 2017 to develop an understanding of community needs. Weymouth project staff and Stantec collaboratively prepared materials in advance of the workshop. Weymouth prepared analytical maps for the workshop. Weymouth staff and Stantec established an invitee list that included elected officials, municipal staff, business community members, community and neighborhood organizations, watershed associations, and boards and commissions to ensure that an open network of stakeholders could provide a diverse set of perspectives on the project.

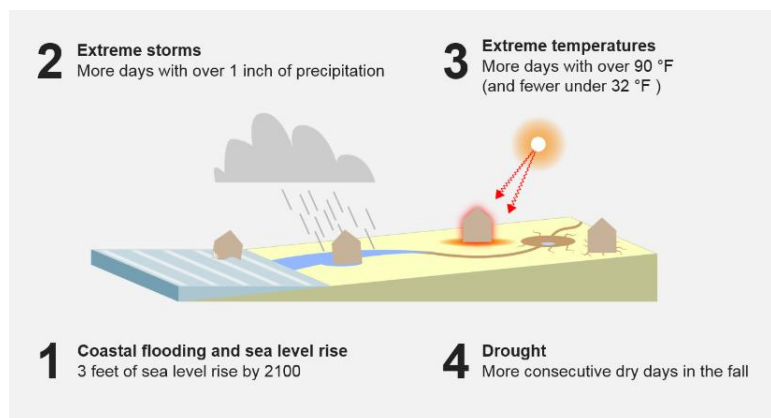
The Community Resilience Building Workshop was held on February 8, 2018. The workshop agenda, included as Appendix 1, began with a presentation from Mayor Hedlund. The project team then presented a brief overview of the hazards. The reported hazards were determined by the Major Basins report and relevant existing plans, reports and studies, including the FIRM Analysis, Hazard Mitigation Plan, Open Space and Recreation Plan, and Flood Hazard Mitigation Plan.<sup>3</sup> From there, the participants worked in four tables to identify community assets and vulnerabilities. Participants were mixed by sectors and areas of expertise to enable dynamic conversations in each table group. After a break for lunch, participants cross-referenced the hazards and assets and vulnerabilities to identify and prioritize resilience actions. Each table then presented their top actions to the entire workshop. Where applicable, similar recommendations were grouped together by theme, such as sea walls, stormwater, and communications. Workshop participants then voted for their highest priorities.

This report provides an overview of the workshop's resulting top hazards, current concerns and challenges, current strengths, and actions to improve Weymouth's resilience to natural hazards today and in the future. These findings were presented to the public at a community listening session on June 7, 2018. A draft copy of this report was made available on the town's Department of Planning and Community Development website prior to the listening session, and a public meeting announcement was developed to advertise the event. The meeting announcement was sent electronically to all parties previously invited to the Community Resilience Building Workshop, to members of relevant town boards and commissions, and to others. A press statement from the Mayor's Office was also released. A copy of the announcement and press statement are included in Appendix 4.

More than 20 individuals attended the community listening session, which included moderated discussion. A video of this meeting was recorded and broadcasted by the Weymouth Educational Telecommunications Corporation (WETC). A free public copy of this video is available on-demand through the WETC's website (<http://weymouth.tv/>).

## TOP HAZARDS

The following top four hazards are based on stakeholder interviews and demonstrate an understanding of past and potential future community impacts. The following hazard descriptions use the business-as-usual emission levels and basin subarea data for climate predictions from the Statewide and Major Basins Climate Projections report (Executive Office of Energy and Environmental Affairs, 2017).



<sup>3</sup> Plans, reports, and studies are available at <http://www.weymouth.ma.us/planning-community-development/pages/plans-reports-studies>.



- Coastal flooding and sea level rise
  - 66% probability that sea level rise will be between 2.0-4.0 feet, with median probability of 3.0 feet (2100)
  - Sea level rise combined with coastal storms and high tides can surge water in larger areas more frequently
  - Salt-water intrusion could alter the composition of ecosystems
- Extreme storms
  - At least 1.3 more days with over 1 inch of precipitation a year (2100)
  - At least 1.1 inches more total precipitation per year (2100), occurring mostly in spring and winter
  - Days with over 4 inches of rain per year ranges from remaining constant to more than doubling by 2100
  - More intense downpours leading to inland flooding and along rivers, streams, wetlands, and areas with poor drainage
- Extreme heat
  - Looking forward to the end of the century, the climate in Massachusetts could feel more like Myrtle Beach in South Carolina, which will require significant adaptation to the community's facilities
  - At least 3.5 °F overall annual temperature increase (2100)
  - At least 11 more days a year with temperatures over 90 °F (2100)
  - At least 22 fewer days a year with temperature below 32 °F (2100)
  - More days with cooling needs and fewer days with heating needs
  - Heat island effect is especially impactful in urban areas and for vulnerable populations
- Extended drought
  - The range of consecutive dry days in the fall by the end of the century is broad in the climate projections, ranging from 1.4 fewer days to 2.4 more days
  - The fall season is expected to experience an increase of 0-3 consecutive dry days (2100)
  - Droughts threaten local water supply, groundwater recharge, and riverine ecosystems
  - Droughts damage vegetation and weaken tree root systems

## CURRENT CONCERNS AND CHALLENGES PRESENTED BY HAZARDS

Workshop participants identified their top concerns about natural hazards based on their knowledge of the community and the project team's presentation. Their concerns are categorized and reflected as follows.

**Coastal flooding** is a pressing issue, as the highest-ever recorded flood<sup>4</sup> happened on January 4, 2018, just weeks before the workshop. High water flooded coastal roads and isolated certain residents, who had to be rescued by emergency responders. Looking forward, workshop participants were concerned about the sea level rise, as the storm condition from January 4<sup>th</sup> becomes the "new normal" during astronomically high tides<sup>5</sup>, and moderate and severe storms reach unprecedented heights and inundation levels. After the workshop, Weymouth was hit by another severe flood on March 2, 2018, which closed schools, forced residents to evacuate, and left thousands without electricity.

Participants identified precipitation resulting from **extreme storms** as an ongoing concern in Weymouth given the number of areas with poor drainage and flooding problems. Stakeholders including the Department of Public Works are aware of problem areas. These areas are often related to developments built in areas with poor soils, high groundwater tables and flat gradients. Problems experienced by property owners include flooded yards and

---

<sup>4</sup> See <https://www.bostonglobe.com/metro/2018/01/05/official-boston-breaks-tide-record/UPbwDxgF0QXNOWvB9bcQ7L/story.html>.

<sup>5</sup> With 3 feet of sea level rise, the median value of the likely scenario range by end of century.



basements, ponding and stagnant water, mosquito breeding, and malfunctioning drainage infrastructure such as clogged inlet grates. Furthermore, Town staff resources to deal with maintenance issues have shrunk considerably over the years.

Participants were concerned about increasingly **extreme heat** in Weymouth, especially for vulnerable populations, as many of Weymouth's buildings were not built with cooling needs in mind. The percentage of Weymouth's population now 65 or older is 18% and is expected to increase to 20% in five years<sup>6</sup>, which means more potentially vulnerable population to heat stress and lack of mobility. Weymouth has several high-rise elderly housing buildings, such as the Senior Center located at 182 Green Street, that welcome seniors and provide supportive programs. Participants did note that some adaptation measures have already been taken, such as establishing cooling centers at the library and other locations.

The threat of **extended drought** was highlighted in the workshop. Participants noted that with a changing climate, drought could have significant impacts in Weymouth, which manages its own water supply through reservoirs and well extraction. All wastewater is transferred out of the public water supply watersheds via MWRA sewer and so does not contribute to basin recharge. Supply constraints are most challenging in the autumn, when groundwater levels, stream flows and pond levels are typically at their lowest. During the region-wide drought of 2016, the Weymouth Department of Public Works asked residents to limit water use, as the Great Pond reservoir fell to within one foot of an outdoor water ban. Water supply will need to keep up with future increases in demand, including the temporary, transitional provision of water to Union Point and transit-oriented development at the commuter rail stations in future decades.

## SPECIFIC CATEGORIES OF CONCERNS AND CHALLENGES

**Aging protection from coastal flooding:** Elements of Weymouth's coastal protection are failing, including sea walls and revetments mostly built in the 1950s and 1960s. A plan to reconstruct the deteriorating seawall on Fort Point Road has been in the development stages for several years. This is one of the most (if not the most) vulnerable area for coastal storms. Concerned about impacts to views, residents challenged initial designs that would have raised the seawall height substantially. Since that time, the town has obtained a grant to elevate six homes on the point. This area experienced severe flooding during the storms of early 2018. That experience, combined with planning for climate change, may make a higher seawall height more palatable. This year, Weymouth received a \$1.6 million state grant to repair a 324-foot segment of the sea wall along Fore River Avenue. In the January 2018 record-setting storm, the Fore River Avenue and Fort Point Road sea walls were overtopped. However, workshop participants understood that the solution will not be as simple as rebuilding the sea walls, with compounding issues related to sea level rise, residents' perceptions, funding, ownership issues, and hard protection versus living shorelines come into play. For example, coastal residents are concerned about rebuilding the sea walls so high that their views are blocked. In a recent attempt to rebuild the Fort Point sea wall, the city could not apply for funding because it does not own the entire wall and must resolve the ownership issues. The short- and long-term sustainability of sea walls is also in question, as the current sea walls face erosion, and will need to be raised significantly to protect against rising seas. Other parts of the town are better suited for climate adaptation. In the Back River basin, coastal salt marshes are protected by the ACEC. The Cadman Conservation Area in the Fore River and Webb Memorial State Park (at the tip of Weymouth Neck) are also protected coastal areas.

**Quality of infrastructure and ability to adapt to sea level rise:** Weymouth is a regional hub for evacuation routes (MA 3 and 3A), power generation (Constellation Energy), natural gas facilities, and sewage pumping. Weymouth also has infrastructure that serves the town, including dams (such as Smelt Brook Dam, Iron Hill Dam, Whitman's Pond Dam, and Great Pond Dam), flood control measures, and local roadways. Workshop participants were concerned

---

<sup>6</sup> Community profile prepared by Esri, April 2018



that today's infrastructure is not adequately prepared against the natural hazards as forecasted by the standard Statewide projections report. Failing infrastructure due to any number of the hazards, including sea level rise, may have significant side effects, such as limiting access on low-lying roads, pollution escaping from brownfield and hazardous materials sites, and infiltration into the regional sewer system.

**Drainage and stormwater management:** The community's centuries-old system is unable to handle current drainage needs. The drainage systems, including natural streams, are often clogged with vegetation and rubbish. Areas with poor drainage identified by Weymouth's Department of Public Works can be found in Appendix 3. Map B. Stormwater. The sixteen locations identified as drainage concerns are not concentrated in any one part of town, but are distributed throughout. These issues are expected to be exacerbated by the projected increase in heavy rainfall days and sea level rise at the outfalls. Furthermore, unlike other services in the community, stormwater does not have a dedicated utility and is lacking in capital improvement funds. On developed sites, the community does not require green infrastructure or regulate for best management practices. The Town does not have sufficient labor force or funds to conduct recommended maintenance of stormwater infrastructure now, and we anticipate problems are going to get worse with increased storm events.

**Emergency communications:** Communication, especially to vulnerable populations, was indicated as one of the most critical issues. While the South Shore Hospital, located on a hill at high elevation, and emergency shelters established throughout town are a strength, the stretched town emergency services department operational demands and potentially isolated populations and institutions beyond Weymouth Neck on Weymouth Port are a vulnerability. Workshop participants agreed that the general population needs a better understanding of the hazards presented at this workshop. Lastly, the Town's private fiber network connecting Town Hall, the Police Department, and other municipal functions is an important part of the current communications strategy and could be vulnerable to extreme storms and flooding.

**Drinking water supply and watershed protection:** Weymouth provides its own public water supply, which is drawn from the greater Back River watershed, including Great Pond Reservoir, the South Cove of Whitman's Pond and several wells within close proximity to the Mill River and the Old Swamp River. These water resources also support the local ecology, including the town's famous herring run, and these competing uses have led to water use conflicts. In dry spells, Great Pond is recharged by pumping water from South Cove; this reduces flows to Whitman's Pond and the herring run. Meanwhile, demand on the town's water supply continues to expand as new development occurs across the community, particularly at Union Point. On the quality side, groundwater sources are impaired by elevated sodium levels from road salt. On the bright side, water use reduction programs have been effective in decreasing overall consumption in recent years.

## **CURRENT STRENGTHS AND ASSETS**

Because of 2018's January 4th and March 2nd floods, the community is currently well acquainted with the town's existing strengths. Residents evacuated and weathered the storm with support from emergency service personnel. Reinforcing and expanding best practices will generate even more resilience against future storms and other hazards.

Workshop participants identified **infrastructural** assets in the community. Transportation assets identified include the Fore River Bridge and commuter rail stations. Emergency and supportive infrastructure include the South Shore Hospital, elderly housing, the Senior Center, the emergency shelter at the high school, and the library's emergency shelter. One of Weymouth's strengths that was highlight is the town's regional interconnectivity, including regional energy infrastructure, extensive and regionally-connected sewer system, and emergency water supply connection to the regional MWRA system.

As mentioned earlier, the recent floods demonstrated Weymouth's strong **societal** capacity to respond to hazards in a well-coordinated and resilient way. Workshop participants identified the well-equipped and active emergency



management personnel and National Guard support as assets. Furthermore, participants identified Weymouth's civic groups and faith-based communities as assets. In terms of communication, participants also identified the established evacuation plans and school messenger program as assets.

Elements of Weymouth's physical **environment** were identified by participants as especially resilient assets. Weymouth has parks and conservation land along the shore in flood prone areas that are and will continue to be assets with sea level rise and increasing inundation. Of note are the Weymouth/Hingham Back River Area of Critical Environmental Concern, Webb Memorial State Park, Cadman Conservation Area, and Newell Playground park. Upstream of the coastline, Weymouth's saltmarshes protect floodplains adjacent to Back River and Fore River, and to some extent Mill River and Old Swamp River. In terms of environmental policy, participants identified the water use reduction programs (to reduce water demand during droughts) and sewer inflow/infiltration programs (to reduce sanitary sewer overflow occurrences during storm events) as assets.

## TOP RECOMMENDATIONS TO IMPROVE RESILIENCE

**1. Build sea walls.** Restoring and expanding Weymouth's aging sea walls is the highest priority. An area identified with immediate need is along Fort Point Road. The participants brought up issues related to sea walls, including trade-offs related to height, level of protection, residents' views, ownership, funding sources, and drainage. Furthermore, while sea walls are a priority in the near- to mid-term, participants were interested in long-term land use change as coastal flooding risks increase, such as elevating homes and retreat from flood-prone areas. With so many issues to consider, consensus is that further sea wall study is warranted.

**2. Conduct an infrastructural assessment study.** Weymouth's infrastructure serves local and regional communities. Potential infrastructural risks due to natural hazards in Weymouth include flooded sewage pump stations, impacts on evacuation routes, decaying storm gates, flooded critical and low-lying roadways, and insufficient drainage systems.<sup>7</sup> A specific concern is accessibility to Weymouth Neck on low-lying roads during flood events. These systems and others will be affected by sea level rise. Therefore, a top recommendation is to conduct a thorough assessment of the infrastructure's quality and resilience to climate change.

**3. Improve stormwater management.** Projected increases in rainfall amounts pose threats to Weymouth, including inland flooding in areas with poor drainage and sodium intrusion from road salt into drinking water aquifers. The workshop participants felt strongly that watershed groups and the water department should identify how to implement a stormwater utility to fund projects and manage changes, such as addressing poor drainage, sodium intrusion, use of best management practices, additional open space and parks, and green infrastructure. State and federal requirements for municipal stormwater management are increasing and town will need enhanced tools and funding to meet these requirements.

**4. Create a communications plan for raising awareness about hazards.** Communication was identified as a top priority. Tools such as a communication packet are recommended to increase awareness of hazard mitigation and vulnerabilities at the sub-community level, as the threats from climate change are often hyperlocal. A communication packet could contain pertinent information regarding the sub-area's hazards, adaptation measures, supportive services, and other opportunities for land owners and tenants. Communications about the threats should have graphic representations of the hazard areas under future scenarios. A community communication plan could include public education and provide practical information and answers, such as how to adapt to sea level rise and where emergency shelters are. Townwide emergency communications could be improved with measures such as Reverse

---

<sup>7</sup> Weymouth's Department of Public Works Memo (December 2017) on drainage problem areas identifies issues including overtopping of waterways, restricted waterways, outfall clogging, needed relay pipes, undersized drains, untreated stormwater outfalls, broken pipes, and other maintenance problems.





911<sup>8</sup>, maintaining a database of vulnerable populations in conjunction with the health department, maintaining email lists, evacuation route signs, and strengthened coordination amongst community organizations and institutions. Raising awareness about the nature of future hazards for public education can also create “buy in” for the planning and actions the town will need to take to address the concerns.

**5. Protect the public water supply and critical environmental resources.** Weymouth needs to secure its water supply by balancing supply and competing demands. The use of conservation tools was identified as a priority. Of the many conservation tools available, workshop participants focused on expanding the ACEC to include herring run and Whitman’s Pond to capture more of the area associated with public drinking water supply. An ACEC receives special recognition because of the quality, uniqueness, and significance of its resources to be preserved and enhanced. Extending the ACEC could, among other benefits, improve resilience to extreme precipitation, drought, and high temperatures by guarding the area’s vegetated areas from additional impervious surfaces. Other conservation efforts relating to open space protection and water conservation measures could also be used to build resilience in this manner, such as developing protocols to balance and optimize pumping schedules and river flows for the South Cove/Whitman’s Pond water supply and the Back River herring run and altering water conservation triggers so they reflect water levels in more rivers and ponds than Great Pond alone.

## CRB WORKSHOP PARTICIPANTS

Invited and participating entities (\* indicates attendees):

Mayor Hedlund\*, Mayor  
Andrew Hultin\*, Recreation Department  
Bob Luongo\*, Planning Director  
Brian Connolly\*, Chief Financial Officer  
Chip Fontaine\*, Town Engineer  
Dan McCormack\*, Health Director  
Dennis Keohane\*, Weymouth Chamber of Commerce  
Diane Hachey\*, Town Council staff  
Eric Dykeman\*, So. Shore Chamber of Commerce  
Eric Schneider\*, Principal Planner  
Frank Singleton\*, Conservation Comm.  
Geoff Potter\*, North Weymouth Civic Association  
George Mutch\*, Waterfront Committee  
Greg Denton\*, Office of Senator Patrick O’Connor  
John Mulveyhill\*, Emergency Management Director  
Ken Morse\*, Water/Sewer Superintendent  
Linda D’Angelo\*, Back River Watershed Association  
Mary Ellen Schloss\*, Conservation Administrator  
Mary Roy\*, Representative Murphy’s office  
Mary Savage Dunham\*, Fort Pt resident, Hingham Town Planner  
Mike Richardi\*, Weymouth-Braintree Regional Recreation Conservation District  
Matt Tallon\*, Idlewell Neighborhood Association  
Nick Bulens\*, Administrative Services Coordinator

---

<sup>8</sup> Weymouth is rolling out a Code Red program for emergency communications in 2018. Code Red is a service that conducts automatic calls to affected zones during emergencies, such as flooding in specific parts of town.



Paul Milone\*, Harbor Master  
Robert Feldmann\*, Department of Public Works  
Samantha Woods\*, North-South Rivers Watershed Association  
Sean Cleaves\*, Weymouth-Braintree Regional Recreation Conservation District  
Suneeth John\*, LStar (Union Point Master Developer)  
Becky Haugh, Town Councilor, District 1  
Charlotte Jenkins, Assistant Emergency Management Director  
Cheryl Taylor, Pond Plain Improvement Association  
David Burke, Whitman's Pond Assoc.  
Deborah Blanch, National Grid  
Edward Markey, US Senator  
Elizabeth Warren, US Senator  
Eric Miller, Southfield Residents Association  
George Raymond, Herbert Raymond Realtors  
Holly Palmgren, MBTA, Environmental  
James Murphy, State Representative  
Jeff Richards, Director, Department of Municipal Licenses & Inspections  
Jim Young, Southfield Redevelopment Authority  
Jodi Purdy Quinlan, Fore River Watershed Association  
Joe King, US Rep. Stephen Lynch's office  
John MacLeod, Director, Department of Asset Management  
Kenan Connell, DPW Director  
Matt Barry, LStar (Union Point Master Developer)  
Michael Smart, Town Council President  
Patrick O'Connor, State Senator  
Paul Niedwicki, Southfield Redevelopment Authority  
Peter Forman, So Shore Chamber of Commerce  
Robert McConnell, Weymouth Braintree Regional Recreation Conservation District  
Sandra Williams, Planning Board Member  
Stephen Lynch, US Representative  
Steve Ivas, Ivas Environmental (Consultant)  
Steve Reilly, Recreation/Great Esker Park  
Ted Langill, Chief of Staff  
Tom Berkley, LStar (Union Point Master Developer)  
Wayne Mathews, East Weymouth Neighborhood Association

## **SUGGESTED CITATION**

Town of Weymouth (2018) *Community Resilience Building Workshop Summary of Findings*. Stantec's Urban Places. Weymouth, Massachusetts.

## **PROJECT TEAM**

MVP project managers	Frank Singleton	Conservation Commission, Fore River Watershed Association
	Bob Luongo	Planning Director, Town of Weymouth



	Mary Ellen Schloss	Conservation Administrator Town of Weymouth
Project coordinators	Nels Nelson	Stantec's Urban Places
	Larissa Brown	Stantec's Urban Places
Additional facilitators	Jackson Rand	Stantec
	Hillary King	Stantec
	Amelia Casey	Stantec
Table scribes	Alice Arena	
	William Irvine	
	Patricia Fitzgerald	

## **ACKNOWLEDGEMENTS**

Thank you to Mayor Hedlund, Garrett Walsh of Weymouth GIS/IT for mapping, the Weymouth High School for meeting space, Weymouth grant writer Nick Bulens, the Massachusetts Executive Office of Energy and Environmental Affairs Climate and Global Warming Solutions, and the Community Resilience Building workshop guide.



## APPENDIX 1. WORKSHOP AGENDA

<b>Time</b>	<b>Activity</b>	<b>Who</b>
8:30 AM	Breakfast, registration	
9:00 AM	Welcome	Mayor Hedlund
9:30 AM	Presentation: about MVP, introduction to workshop, top hazards	Stantec's Urban Places
10:30 AM	Identify municipal vulnerabilities and strengths	Table groups
11:30 AM	Hazards, vulnerabilities, strengths recap and next steps	Large group discussion
12:00 PM	Lunch	
1:00 PM	Identify and prioritize municipal actions	Table groups
2:30 PM	Identify top 5 actions and write on post-its	Table groups
2:45 PM	Short break	
3:00 PM	Report back top 5 actions per table, organize into themes, and vote	Large group discussion
4:00 PM	Further define urgency and timing	Large group discussion
4:30 PM	Closing remarks	Core project team
5:00 PM	Workshop adjourned	



## **APPENDIX 2. COMPLETED COMMUNITY RESILIENCE BUILDING WORKSHOP MATRIX**



# Community Resilience Building Risk Matrix

## Top Priority Hazards

H-M-L priority for action over the Short or Long term (and Ongoing)

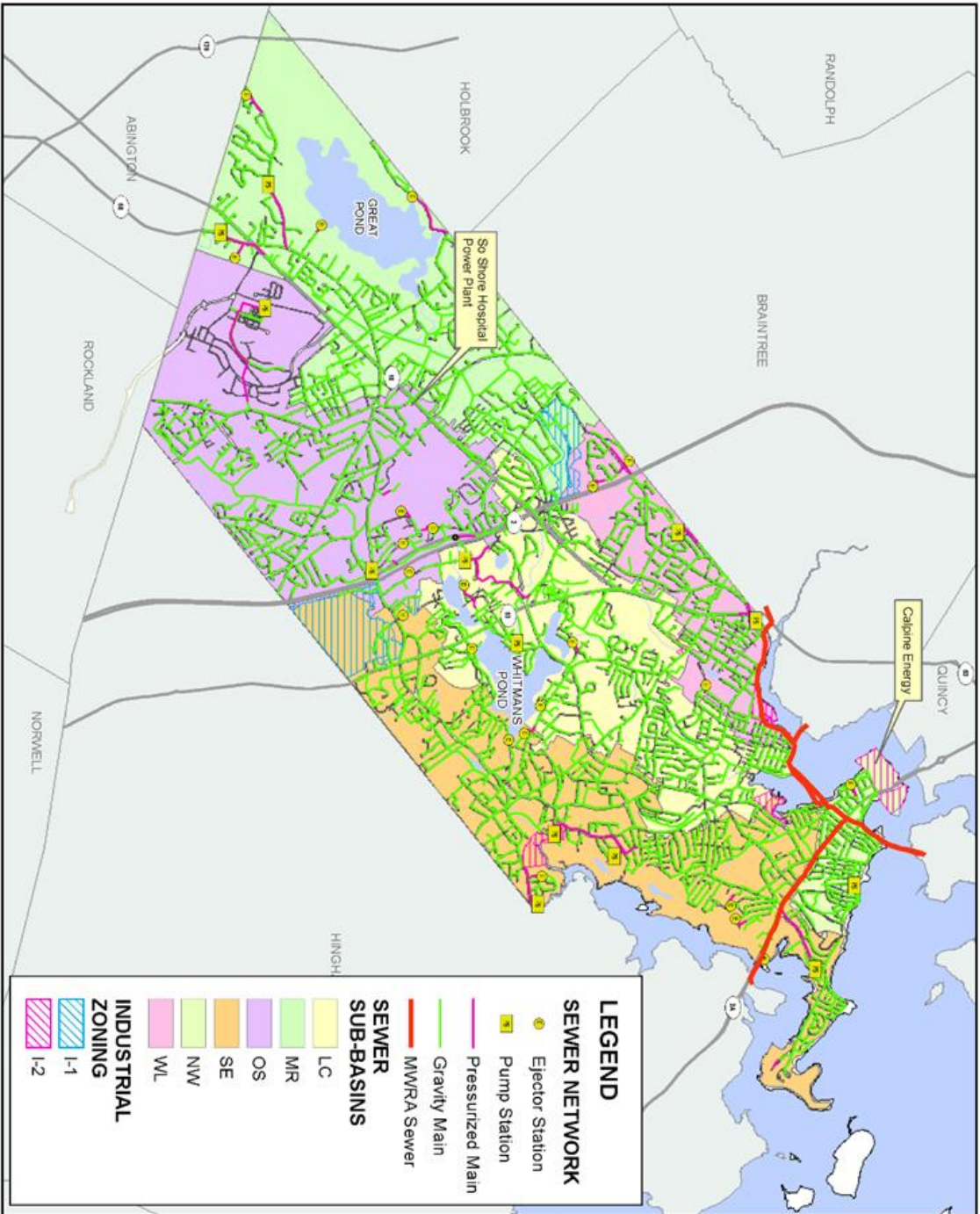
V = Vulnerability S = Strength

Features	Location	Ownership	V or S	Coastal flooding and sea level rise	Extreme storms	Extreme temperatures	Drought	Priority	Time
								H - M - L	Short Long Ongoing
<b>Infrastructural</b>									
Existing sea walls and coastal protection	Coastline	Public	V	Study reconstruction of sea walls, incl future land use and level of protection.				H	O
Local and regional infrastructure, including pump stations, power facilities, evacuation routes, boat landings, and drainage systems	Townwide	Public	V/S	Conduct infrastructure assessment study that assesses regional and local resilience to the threats of climate change.				H	S
Stormwater infrastructure and drainage	Townwide	Public/Private	V	Invest in improved storm water management and address areas with poor drainage				H	S
Wessagusset Elementary School	Pilgrim Road	Public	V	Conduct hazard mitigation study. Check mechanicals and vulnerability.				H	S
Dams, including Great Pond, Witman's Pond, Iron Hill, and others	Various	Public	V	Assess vulnerability (incl Pond Meadow dam). Continue to maintain and inspect, and repair as necessary				H	O
Low-lying roads, including Fort Point, Fore River, Wess. Beach Rd., Ocean Ave, Neck St., and Sea Street	Coastline	Public	V	Study climate adaptation options				M	L
MBTA commuter rail station at Weymouth Landing	W. Landing	State	V	Ensure that MBTA is prepared for climate change and other hazards				M	L
Housing for low income residents, elderly and other vulnerable populations	Townwide	Various	V			Prepare for increased heat with AC and generators		M	L
MWRA emergency water supply connections	Townwide	Public	S				Maintain, ensure compatibility	H	O
South Shore Hospital	Fogg Road	Nonprofit	S	Employ policies to ensure that the hospital stays viable for community resilience				H	O
<b>Societal</b>									
Elderly population	Townwide	N/A	V	Create a communications plan for raising awareness about hazards. Maintain a database of populations for Code Red announcements.				H	S
Vulnerable populations, including disabled and mobility impaired	Townwide	N/A	V	Create a communications plan for raising awareness about hazards. Ensure that shelters are sufficient to address their needs.				H	O
Understaffed Department of Public Works, Fire, and Police departments	Townwide	N/A	V	Ensure staffing levels are adequate for the community's needs				H	O
Population along shoreline, including repetitive loss homes	Coastline	N/A	V	Find short- and long-term solutions to repetitive loss areas, potentially including land use change				M	L
Weymouth Neck population	W. Point	N/A	V	Ensure that this population is not isolated during flood events by addressing low-lying roads and/or effectively communicating risks.				M	L
National Guard Support	Townwide	Nat'l Govt	S	Continue to maintain				H	O
Active emergency management department	Townwide	Town	S	Continue to maintain and support.				H	O
Emergency shelters and evacuation plans	Townwide	Town	S	Equipe shelters to provide services to vulnerable populations and to deal with extreme heat.				H	O
<b>Environmental</b>									
Managing public water supply and Herring Run water needs	Whitman's Pond	Public	V		Developing tools to better manage the resource, i.e. extend the ACEC to protect public water supply			H	S
Brownfields and hazardous materials in flood zones	Various	Various	V	Push to clean flood prone properties before sea level rise causes complications				H	L
Wellfield for drinking water treatment plant	Winter St.	Public	V		Improve runoff water quality to reduce sodium intrusion			M	O
Comprehensive floodplain mapping at Union Point	Union Point	Private	V	Without flood mapping, the potential threat to Weymouth posed by development at Union Point could be high				H	S
Water use reduction programs	Townwide	Public	S/V	Continue to maintain. Expand where feasible.				M	O
Coastal wetlands and estuaries	Coastline	Various	S	Continue to maintain. Expand where feasible.				H	O
Parks along coastline, incl Back River conservation area	Back River	Public	S	Continue to maintain. Expand where feasible.				H	O



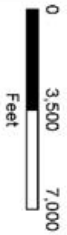
### **APPENDIX 3. MAPS**

- A. Sewer Network and Industrial Facilities
- B. Storm Water Structures
- C. Water Resources
- D. Public Transportation and Municipal Parking
- E. Vulnerable Populations
- F. Recreation
- G. Open Space
- H. MassGIS Impervious Surfaces
- I. Wetlands and Floodplain
- J. Landscape USGS Topo-Quad
- K. MassDEP Regulated Sites
- L. Aerial
- M. Estimated Land Surface Temperature (Heat Index)
- N. Relative Vegetation
- O. ResilientMA online map export for Weymouth's coastline (accessed March 2018)



**Infrastructure**

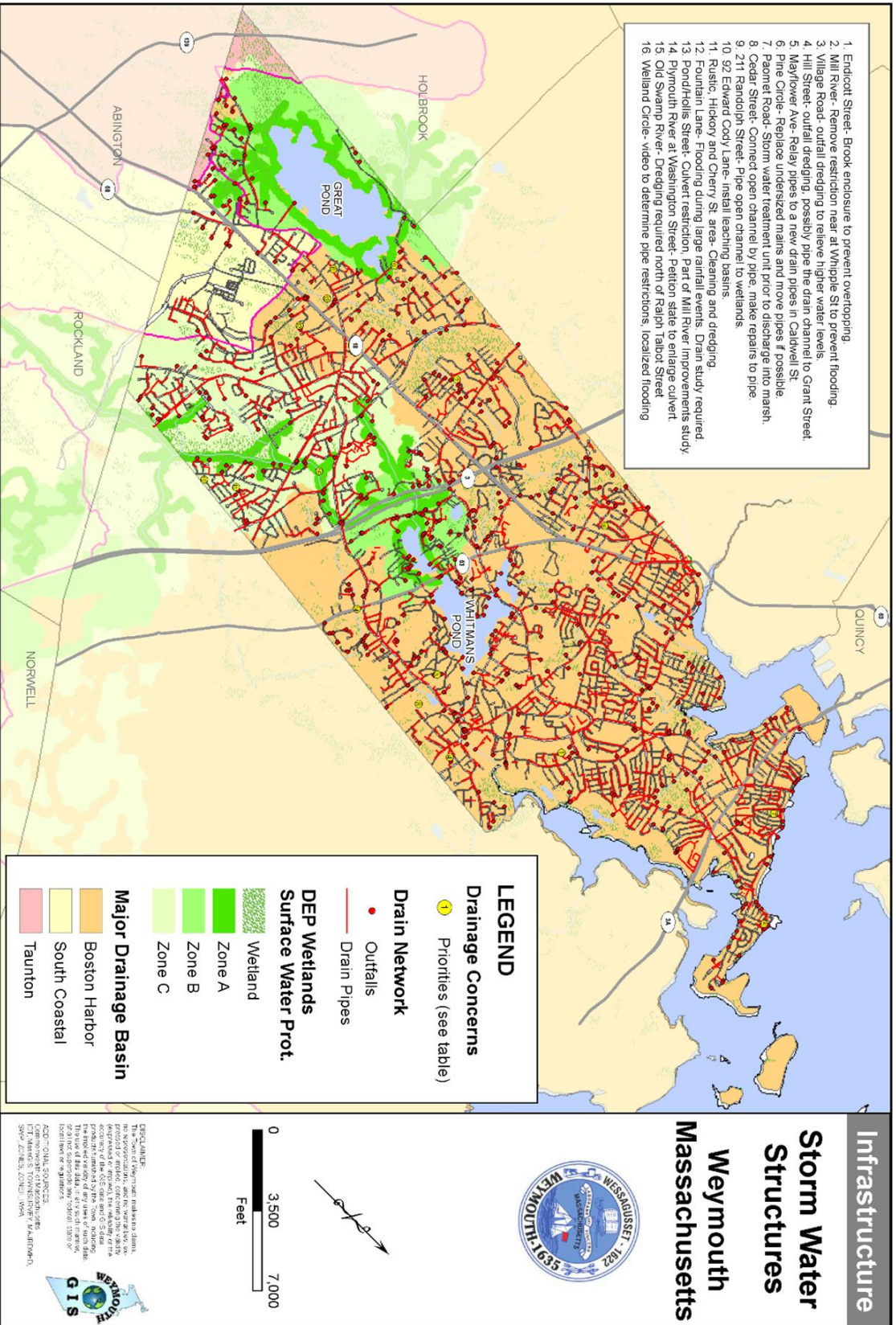
**Sewer Network and Industrial Facilities**  
**Weymouth Massachusetts**

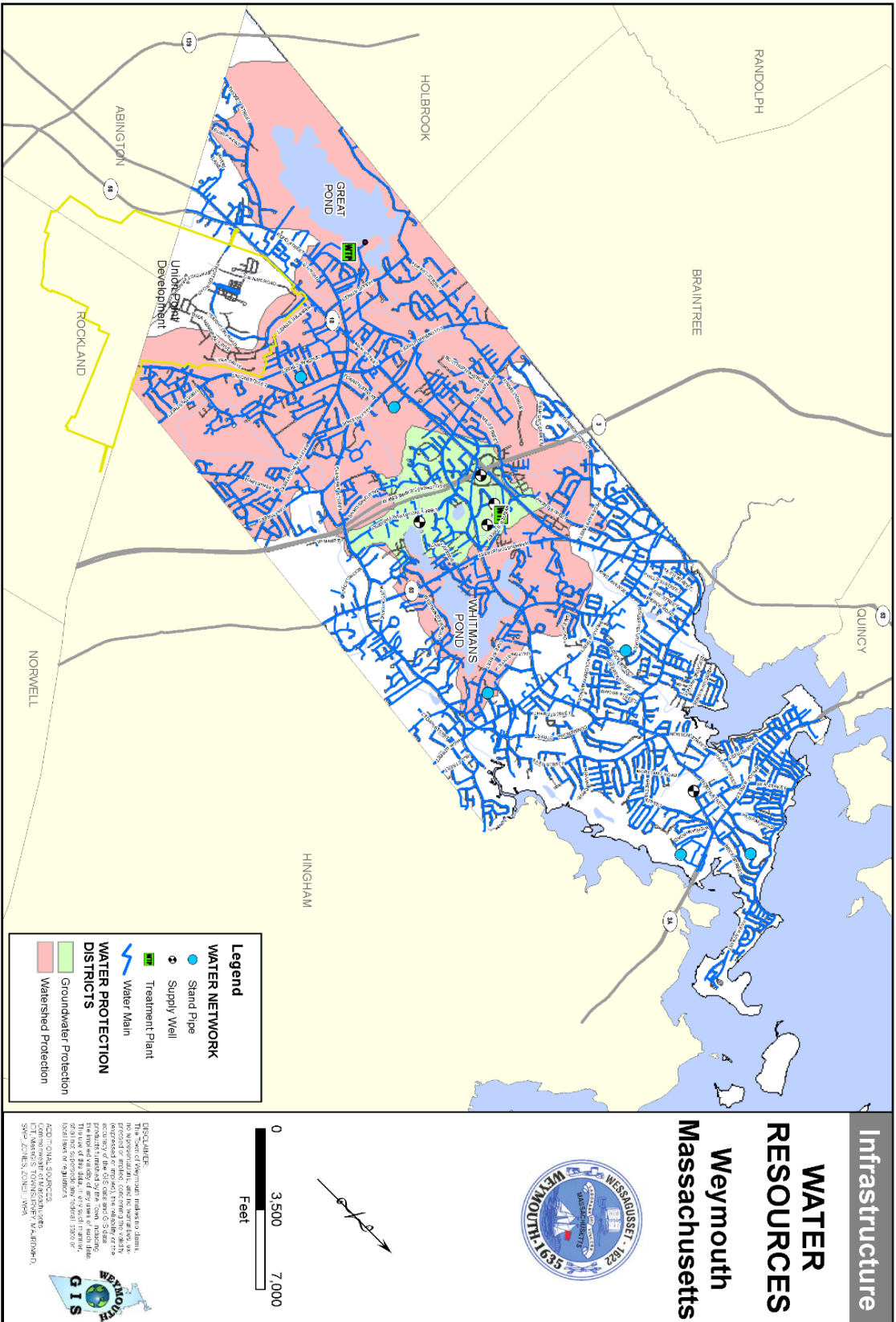


**WYOMOUTH GIS**

ADDITIONAL SOURCE:  
 City of Weymouth, Massachusetts  
 Department of Public Works  
 1000 Weymouth Avenue  
 Weymouth, MA 01981  
 508-863-3300

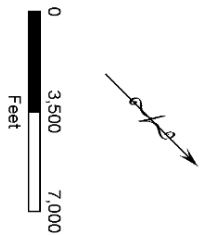






**Infrastructure**

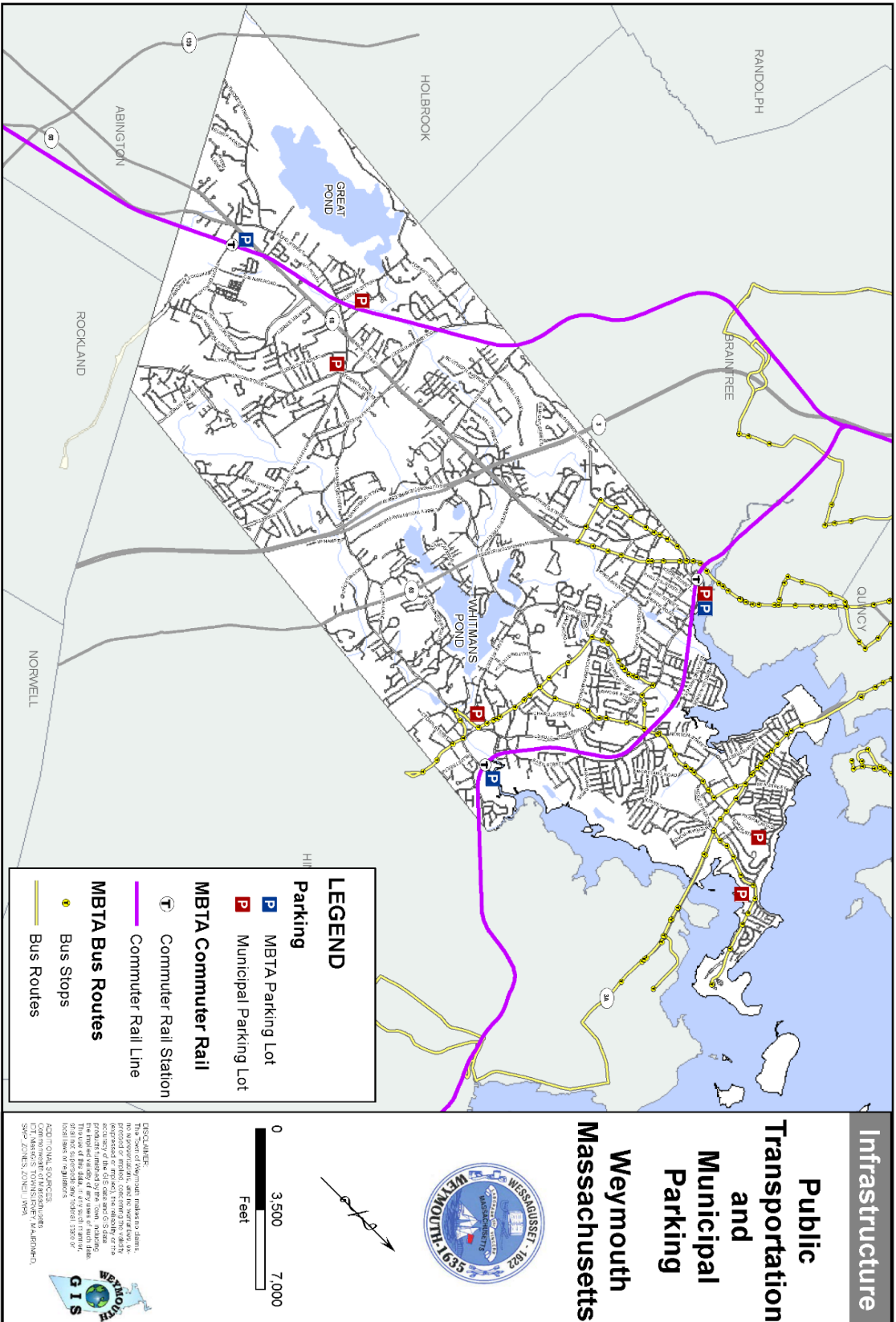
**WATER RESOURCES**  
**Weymouth**  
**Massachusetts**



**DISCLAIMER:** The information contained herein is intended for informational purposes only and is not intended to be used as a basis for any legal or financial decision. The accuracy of the GIS data and the results of the analysis are not guaranteed. The use of this data, if it is used in any way, is at the user's own risk. The user assumes all liability for any and all damages, including consequential damages, arising from the use of this data. © 2009 Stantec Inc. All rights reserved.

**ESRI**  
 3801 CENTRAL EXPRESSWAY  
 REDLANDS, CALIFORNIA 92341  
 909-779-9320  
 www.esri.com

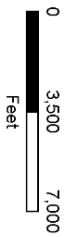
**Weymouth GIS**



**Infrastructure**

**Public Transportation and Municipal Parking**

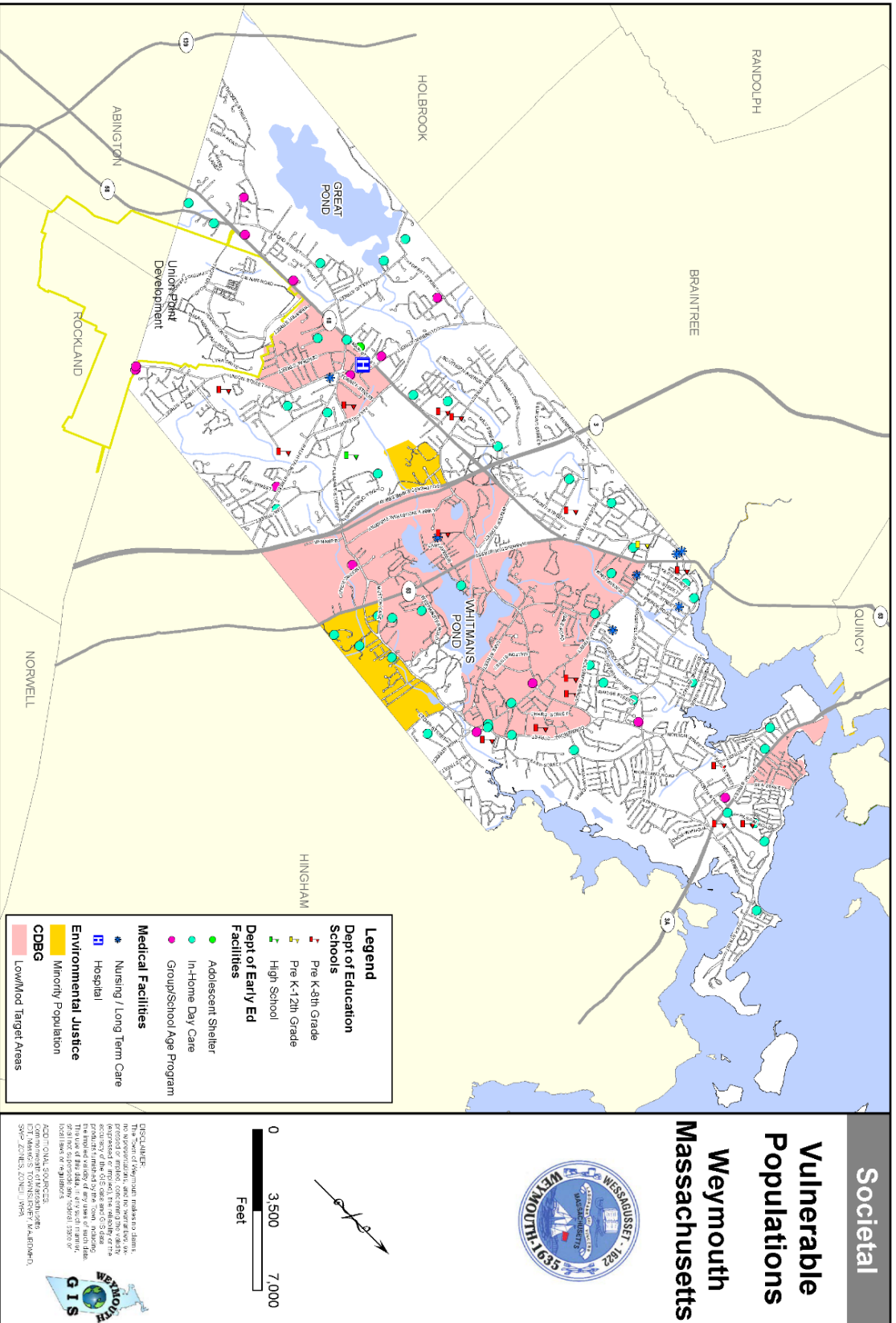
**Weymouth Massachusetts**

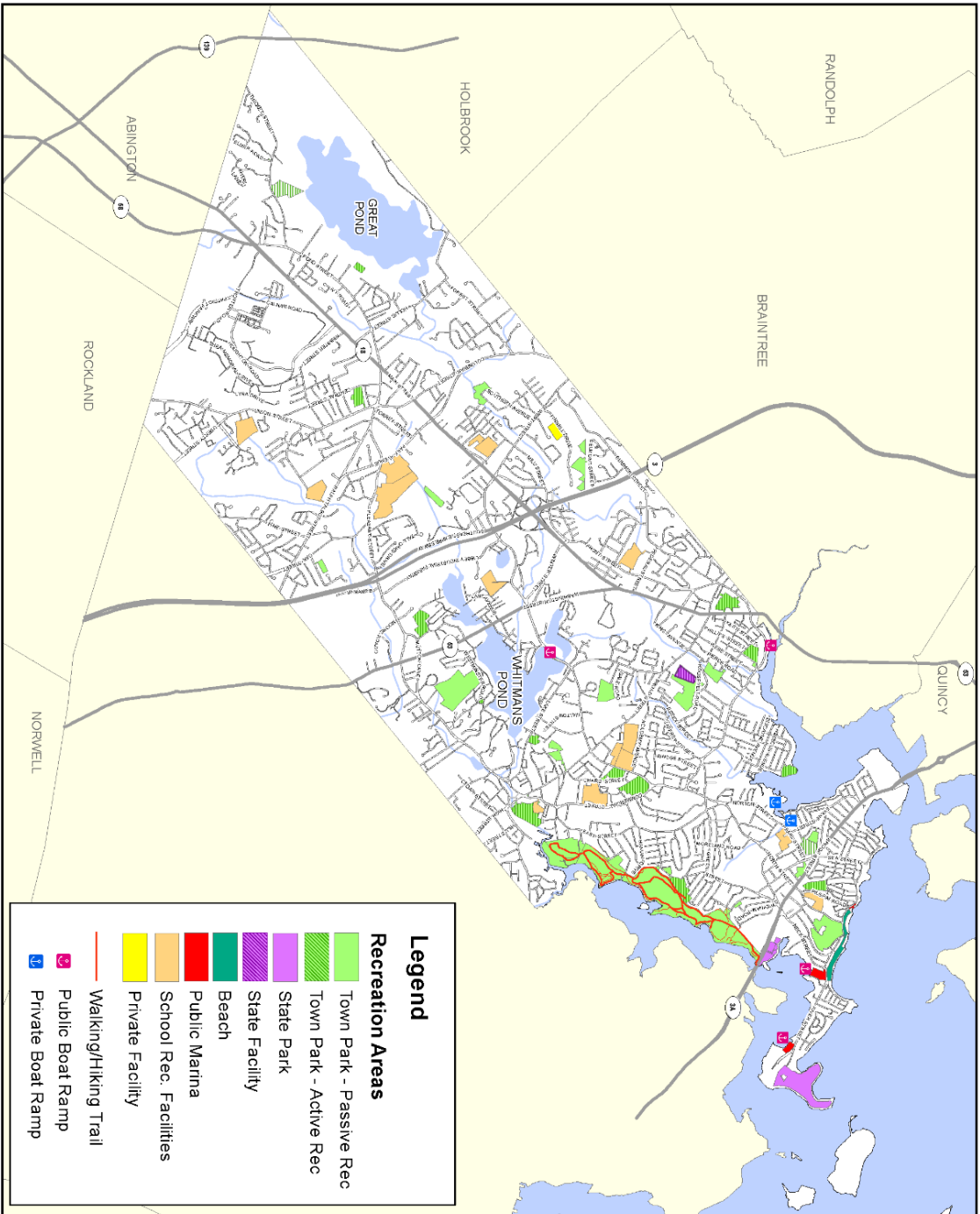


**DISCLAIMER:** The information contained herein is provided for reference only and does not constitute a warranty of any kind. The accuracy of the GIS data and the resulting printed materials is not guaranteed. The use of this data, if it is used in any form, is at the user's own risk. The user assumes all liability for any errors or omissions.

**2017 DATA SOURCES:**  
 Commonwealth of Massachusetts  
 CITY OF WEYMOUTH (Weymouth, MA)  
 GIS: 2017 (N/A, 2017) 1:5000

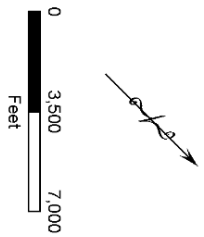






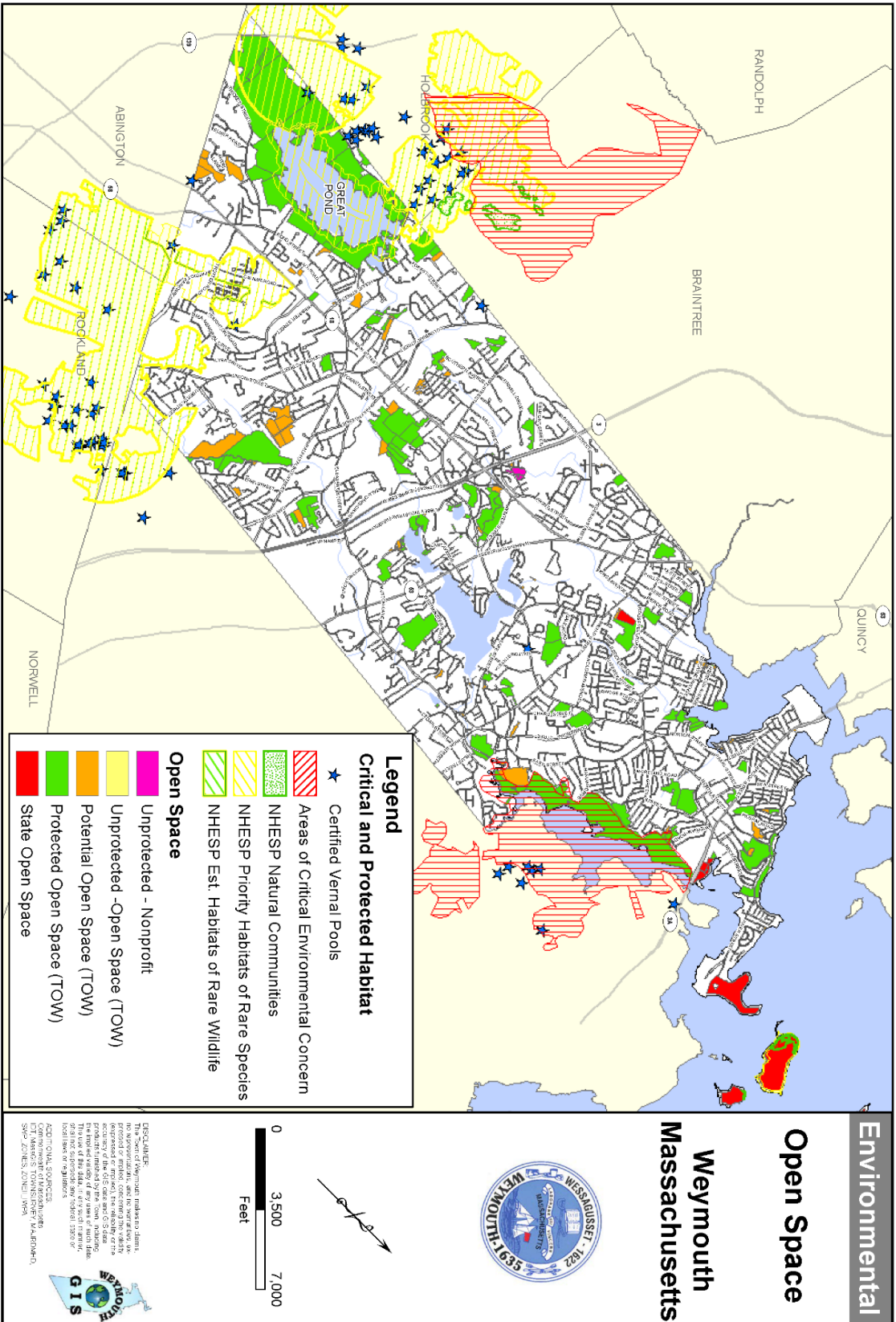
**Societal**

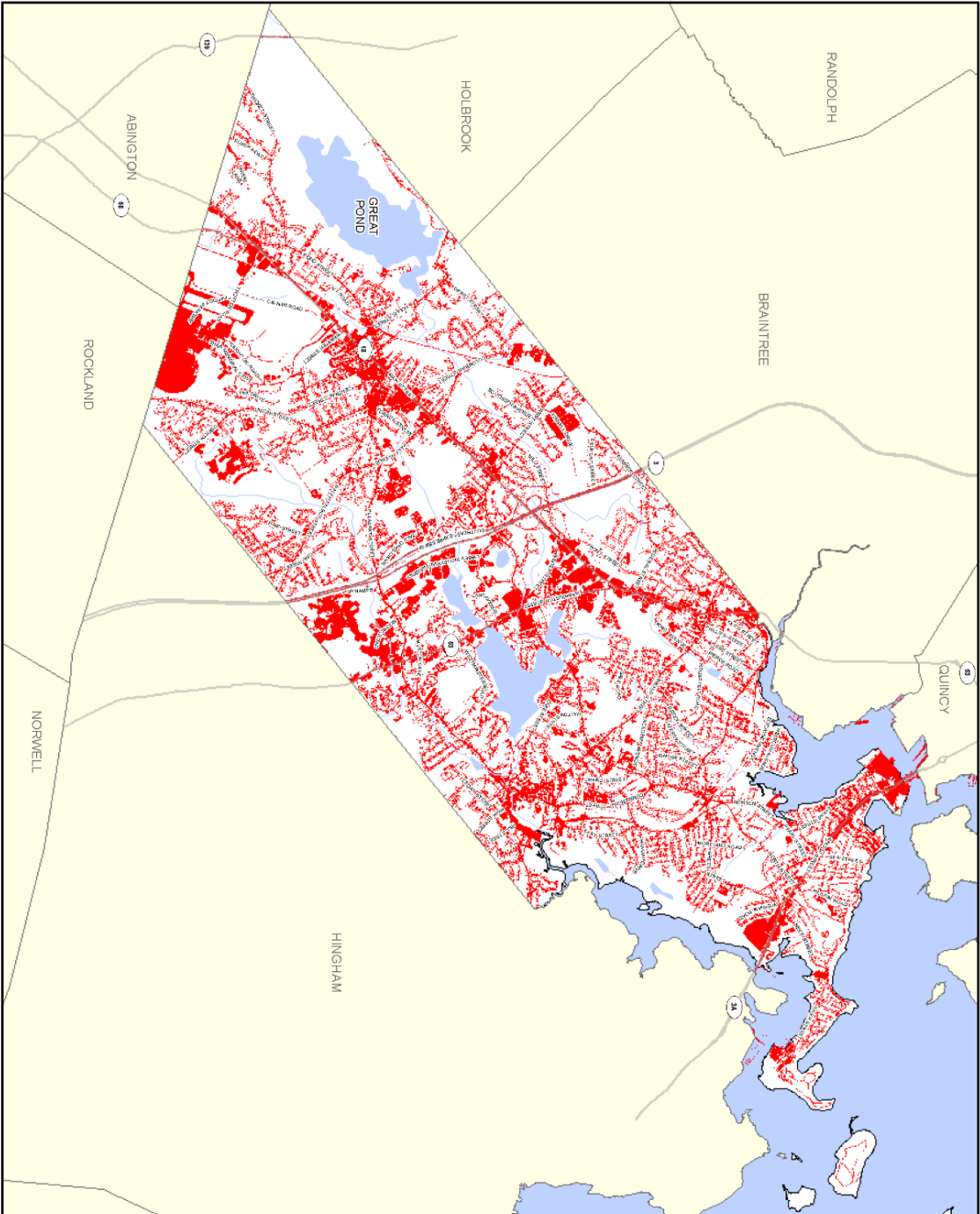
**Recreation  
Weymouth  
Massachusetts**



DISCLAIMER: Stantec and its consultants do not warrant, represent, or assume any liability for the accuracy or completeness of the information provided in this report. The user of this data, if it is used for navigation, is advised to use a current map and to verify the accuracy of the data. © 2008 Stantec. All rights reserved.

ADDITIONAL SOURCES:  
 Commonwealth of Massachusetts  
 CITY OF WEYMOUTH (WEYMOUTH, MASSACHUSETTS)  
 2007 Aerial Imagery





**Environmental**

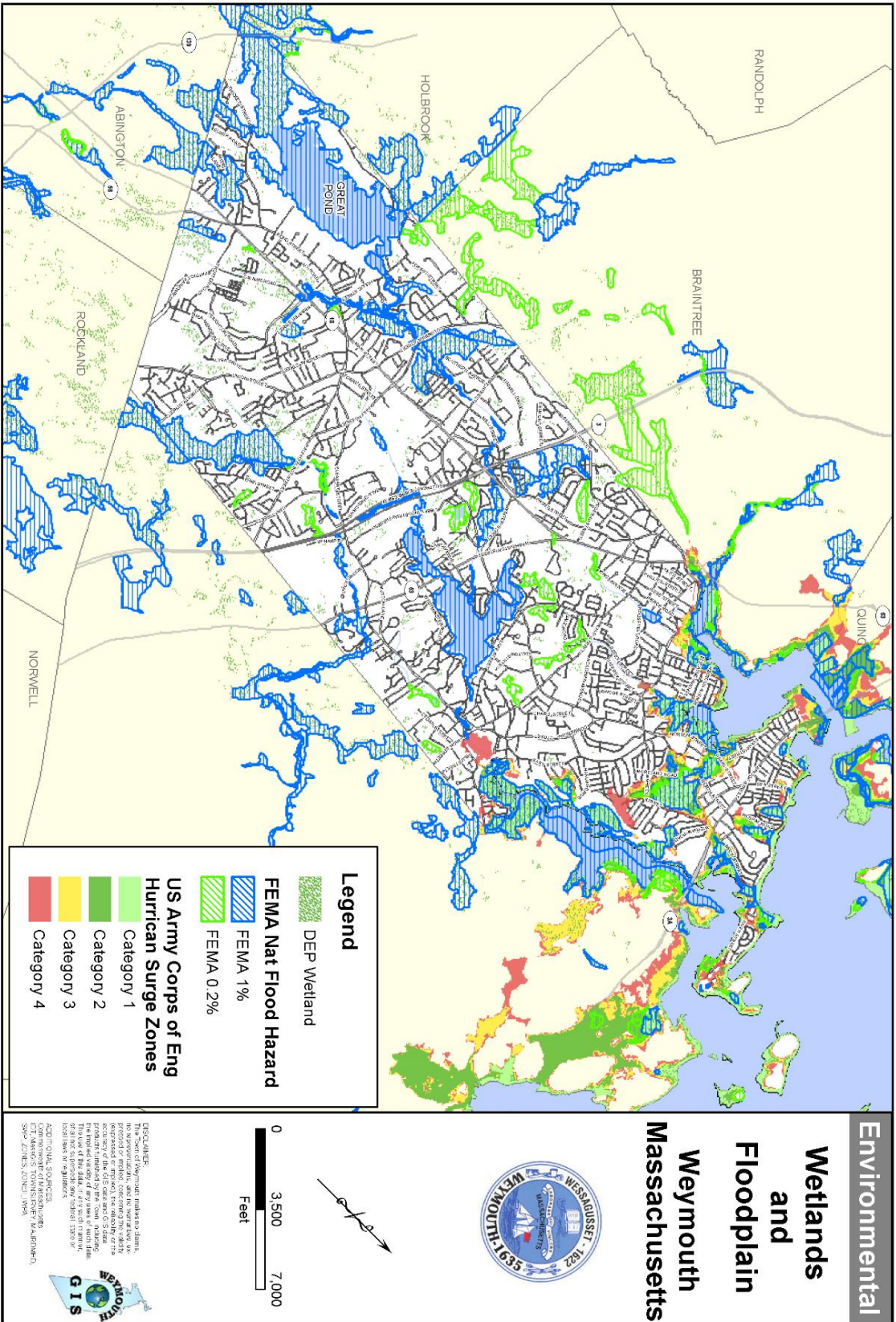
**Mass GIS  
Impervious  
Surfaces  
Weymouth  
Massachusetts**



**DISCLAIMER:** Environmental Impervious Surfaces data is provided for reference only. It is not intended to be used for any purpose other than the one for which it was created. The use of this data, in any form, is at the user's own risk. The user assumes all liability for any and all damages, including consequential damages, arising from the use of this data. The user agrees to hold the City of Weymouth, Massachusetts, and its officials, harmless from and against all claims, damages, and expenses, including reasonable attorneys' fees, arising from the use of this data.

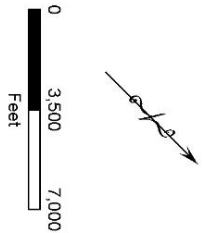
**ADDITIONAL SOURCES:**  
 Commonwealth of Massachusetts  
 CITY OF WEYMOUTH, MASSACHUSETTS  
 500 WEST MAIN STREET, WYOMING, MA 01988





**Environmental**

**Wetlands and Floodplain  
Weymouth  
Massachusetts**

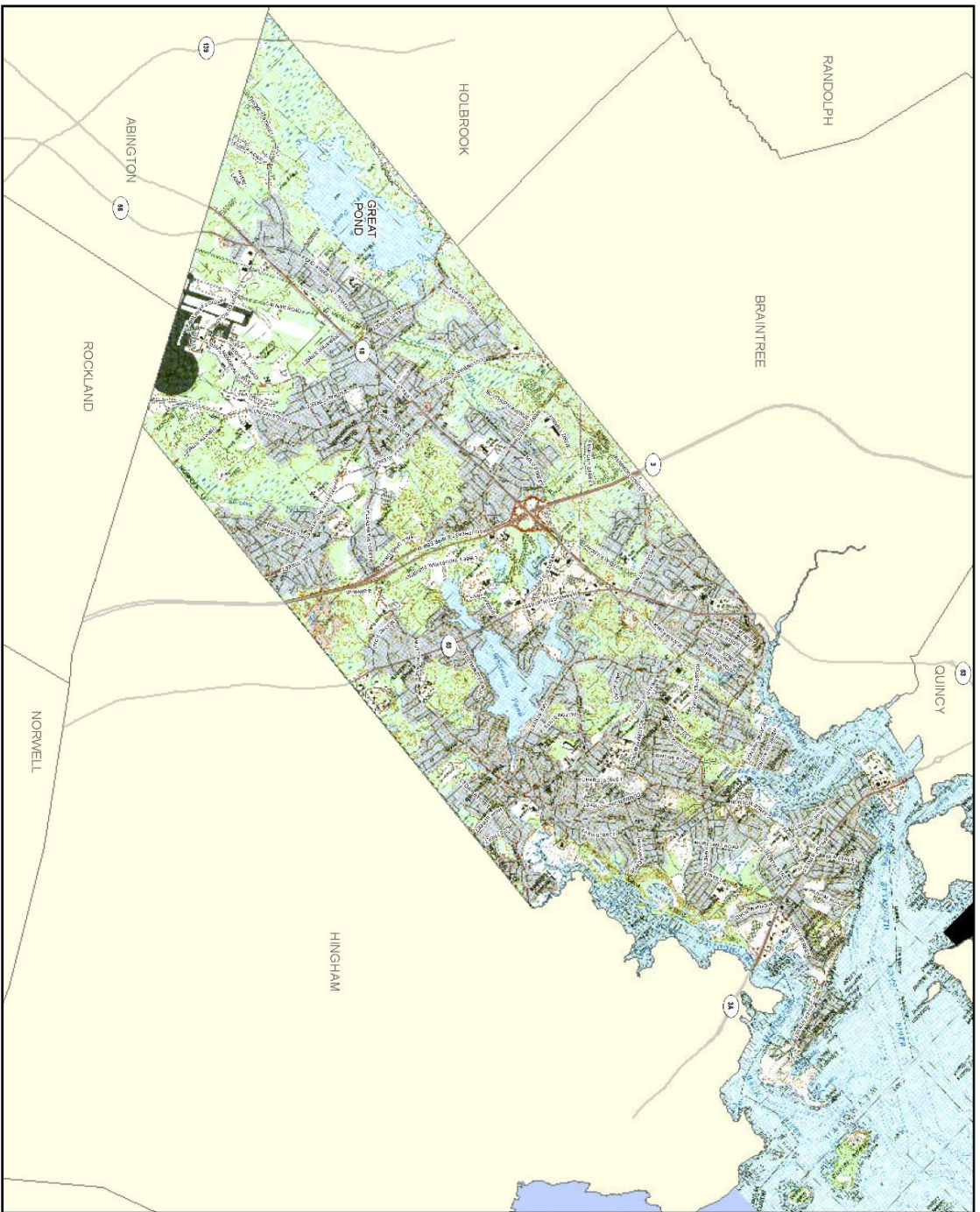


**DISCLAIMER:** Environmental data and information is provided for reference only and does not constitute a warranty of the GIS data and/or GIS data products rendered by this system. The user of this data, if it is used in any form, shall bear the responsibility for any and all errors or omissions.

**ADDITIONAL SOURCES:**  
 Commonwealth of Massachusetts  
 1370 MARKET STREET (STATE HOUSE)  
 02125 BOSTON, MA 02125

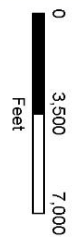






**Environmental**

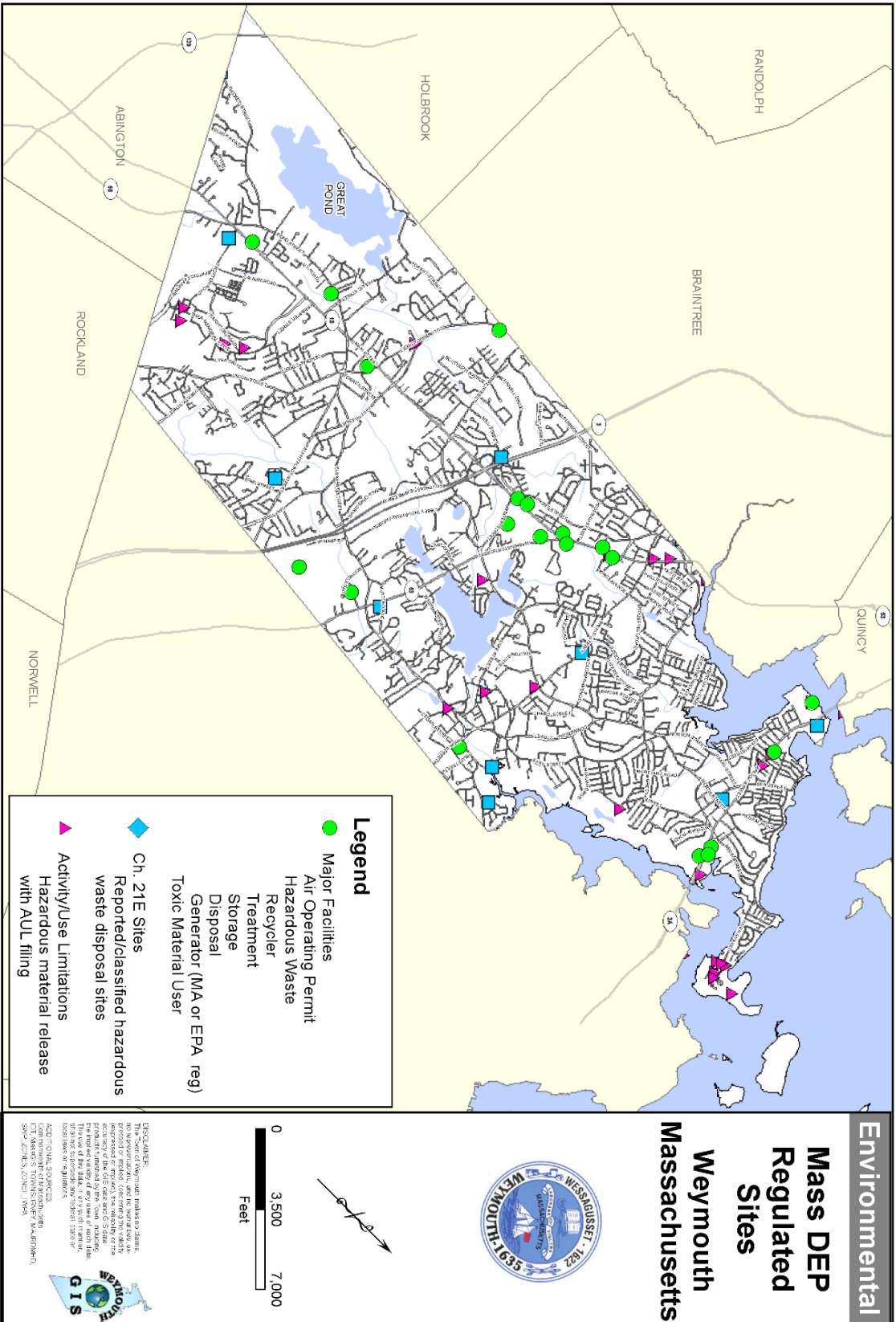
**Landscape  
USGS  
Topo-Quad  
Weymouth  
Massachusetts**



**DISCLAIMER:** Environmental data has been derived from a variety of sources and is provided for reference only. The accuracy of the GIS data and the resulting maps is not guaranteed. The use of this data, if it is used in any form, is at the user's own risk. The user assumes all liability for any and all uses of this data.

**ADDITIONAL SOURCES:**  
 Commonwealth of Massachusetts  
 CITY OF WEYMOUTH (WALDEN)  
 500 WESTERN AVENUE  
 WYOMING, MA 01988

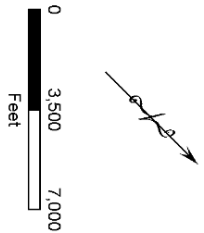




**Environmental**

**Mass DEP  
Regulated  
Sites**

**Weymouth  
Massachusetts**



DISCLAIMER: Environmental data and maps are provided for reference only. The City of Weymouth does not warrant the accuracy of the GIS data and/or data products generated by this system. The use of this data, if it is used in any local level or application, should be based on local level or application.



ADDITIONAL SOURCES:  
 COMMISSIONER OF ENVIRONMENTAL AFFAIRS  
 250 STATE STREET, SUITE 1000  
 BOSTON, MASSACHUSETTS 02109

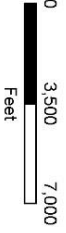


**Aerial**

**Town of Weymouth and Union Point Development (2013 Photography)**


**Weymouth Massachusetts**

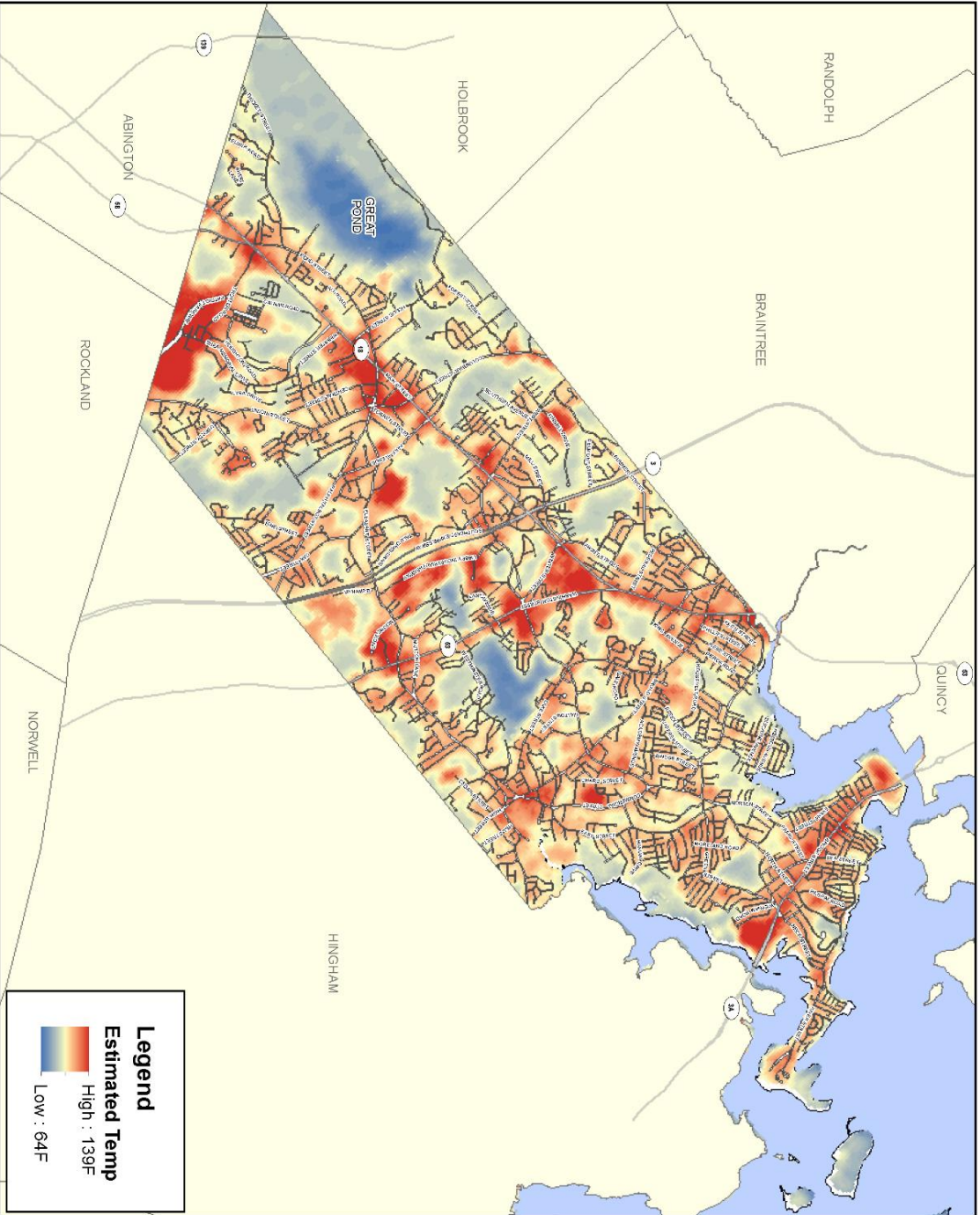





DISCLAIMER: Stantec and its affiliates do not warrant, represent, or make any representation, and to the maximum extent permitted by law, shall not be liable for any errors or omissions in this data. The accuracy of the GIS data and GIS data products created by the Town of Weymouth is not guaranteed. The use of this data, if it is used to make any decisions, is at the user's own risk. Local laws or regulations may apply.

2013 Aerial Photography  
 Commission of Massachusetts  
 GIS, Weymouth, Massachusetts  
 508-688-1500





**Legend**

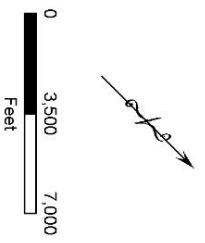
**Estimated Temp**

High : 139F

Low : 64F

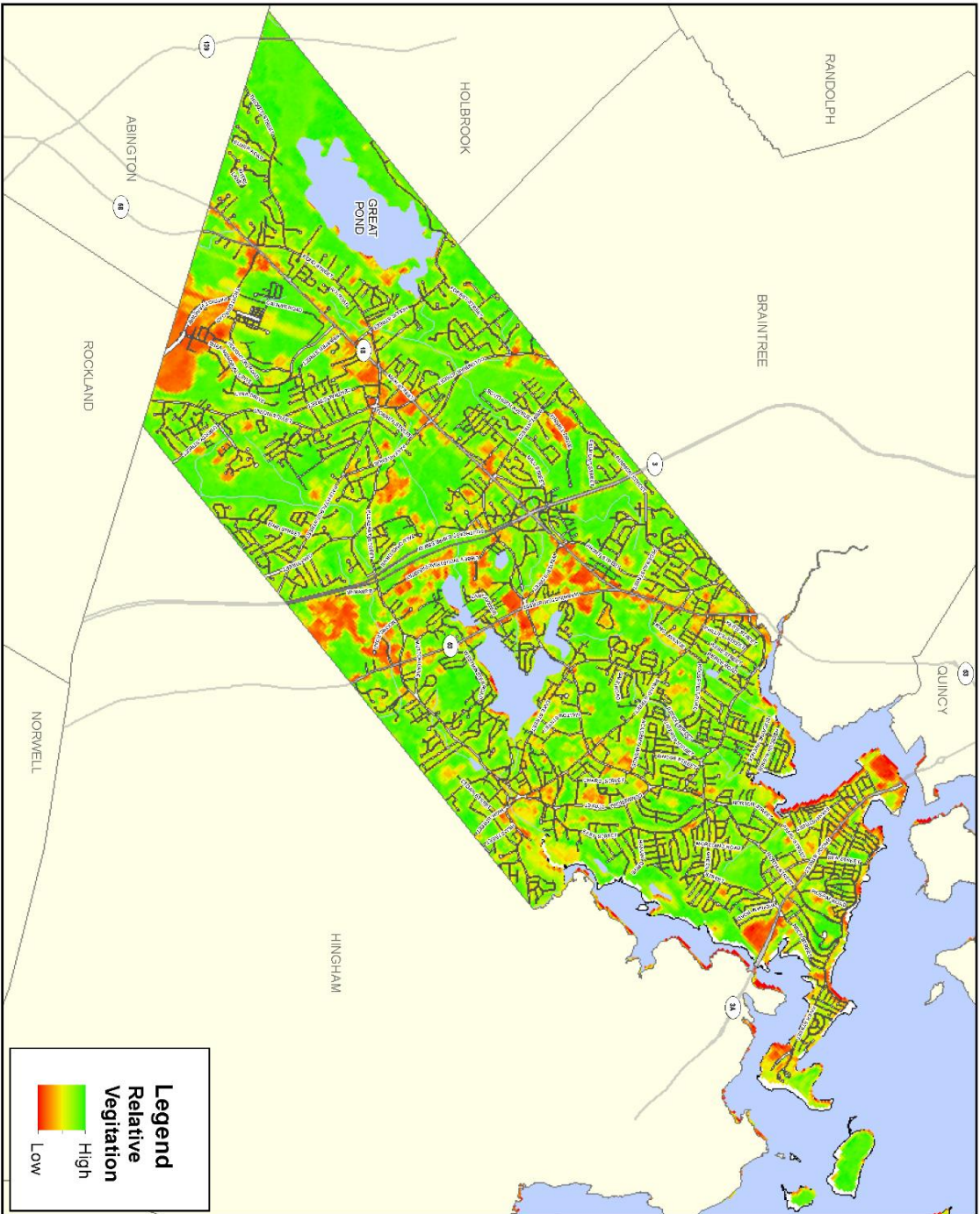
**Environmental**

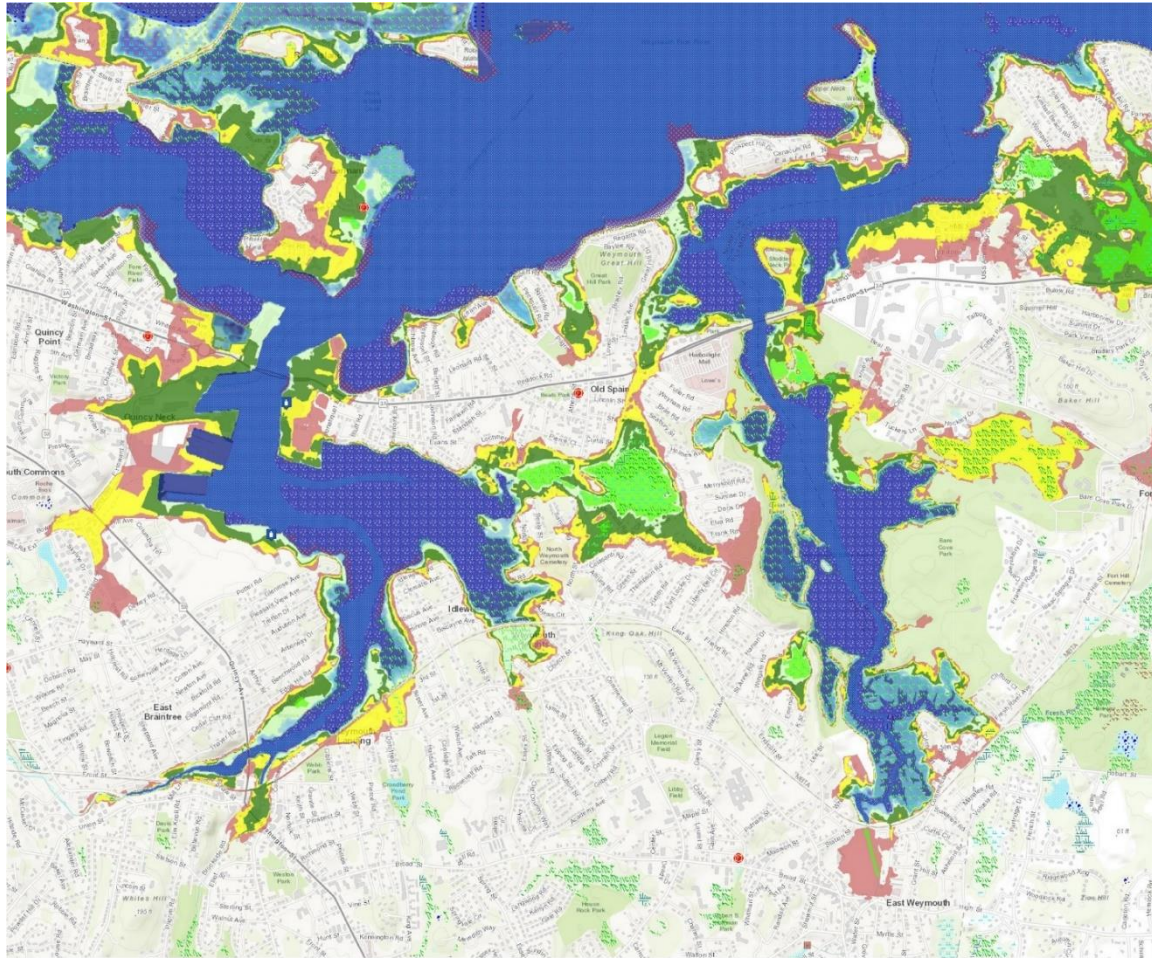
**Estimated Land Surface Temperature Weymouth Massachusetts**






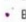



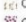



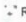













**DISCLAIMER:**  
 The user of this report, plan or drawing, or any part thereof, is advised to consult the applicable laws, regulations, codes, standards, and specifications, and to verify the accuracy of the information presented or indicated, concerning the ability of the product, material or system to perform as intended. The user of this report, plan or drawing, or any part thereof, is advised to consult the applicable laws, regulations, codes, standards, and specifications, and to verify the accuracy of the information presented or indicated, concerning the ability of the product, material or system to perform as intended. The user of this report, plan or drawing, or any part thereof, is advised to consult the applicable laws, regulations, codes, standards, and specifications, and to verify the accuracy of the information presented or indicated, concerning the ability of the product, material or system to perform as intended.










**Weymouth GIS**







- ### Wetlands
-  Barrier Beach System
  -  Barrier Beach-Deep Marsh
  -  Barrier Beach-Wooded Swamp Mixed Trees
  -  Barrier Beach-Coastal Beach
  -  Barrier Beach-Coastal Dune
  -  Barrier Beach-Marsh
  -  Barrier Beach-Salt Marsh
  -  Barrier Beach-Shrub Swamp
  -  Barrier Beach-Wooded Swamp Coniferous
  -  Barrier Beach-Wooded Swamp Deciduous
  -  Bog
  -  Coastal Bank Bluff or Sea Cliff
  -  Coastal Beach
  -  Coastal Dune
  -  Cranberry Bog
  -  Deep Marsh
  -  Barrier Beach-Open Water
  -  Open Water
  -  Rocky Intertidal Shore
  -  Salt Marsh
  -  Shallow Marsh Meadow or Fen
  -  Shrub Swamp
  -  Tidal Flat
  -  Wooded Swamp Coniferous
  -  Wooded Swamp Deciduous

- ### Power plants
-  Biomass
  -  Hydroelectric
  -  Nuclear
  -  Pumped Storage
  -  Wind
  -  Coal
  -  Natural Gas
  -  Petroleum
  -  Solar

- ### Dams
-  High Hazard
  -  Significant Hazard
  -  Low Hazard
  -  N/A

- ### Emergency services
-  Local Police
  -  State Police
  -  County Sheriff
  -  Fire Station

- ### Marine beaches
-  Public
  -  Semi-Public
- ### Water level with 3 feet of sea level rise
-  Water Depth
  -  Low-lying Areas
  -  Area Not Mapped
- ### Hurricane surge inundation zones
-  Category 1
  -  Category 2
  -  Category 3
  -  Category 4



#### **APPENDIX 4. COMMUNITY LISTENING SESSION NOTIFICATIONS**

- A. Public Meeting Announcement
- B. Press Release

# **PUBLIC MEETING ANNOUNCEMENT**

THERE WILL BE A PUBLIC LISTENING SESSION REGARDING  
**MUNICIPAL VULNERABILITY PREPAREDNESS:  
PLANNING FOR CLIMATE CHANGE**

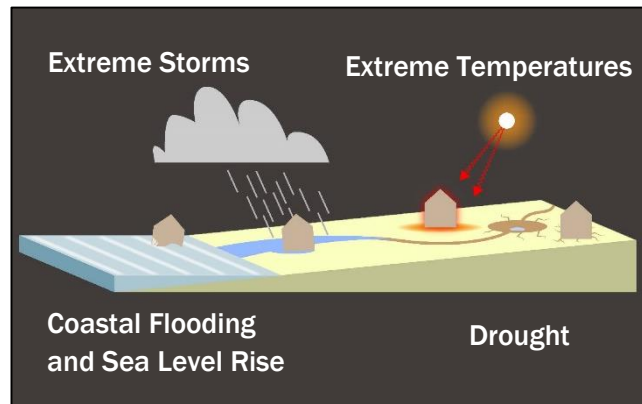
## **ORGANIZED BY:**

MAYOR ROBERT HEDLUND AND  
THE DEPARTMENT OF PLANNING  
& COMMUNITY DEVELOPMENT

## **FACILITATED BY:**

STANTEC URBAN PLACES GROUP

### Top Climate Change Hazards



**WHEN:** Thursday, June 7, 2018 at 7:00 PM

**PLACE:** Council Chambers, Town Hall  
75 Middle Street, Second Floor  
Weymouth, MA 02189

## **PURPOSE OF THE MEETING:**

*The Massachusetts Municipal Vulnerability Preparedness (MVP) Program provides support to cities and towns to begin the process of planning for climate change. Through the MVP Program, the Town of Weymouth has completed a community-based vulnerability assessment and developed a planning report with recommendations for increasing community resilience against climate change hazards. The Town's MVP-certified provider, Stantec Urban Places Group of Boston, will present the results of this vulnerability assessment and outline the planning report's top recommendations.*

FOR MORE INFORMATION CONTACT:  
Department of Planning & Community Development  
781-340-5015



*Town of Weymouth  
Massachusetts*

Robert L. Hedlund  
Mayor  
  
75 Middle Street  
Weymouth, MA 02189



Office: 781.340.5012  
Fax: 781.335.8184  
  
TTY: 781.331.5124

# Press Release

For Immediate Release – June 4, 2018

## Public meeting on climate-change risks and preparedness planned for June 7

Contact(s): Robert Luongo, Planning and Community Development Director  
rluongo@weymouth.ma.us, 781-340-5015

Weymouth, MA – Mayor Robert Hedlund announced today that the Department of Planning and Community Development will host a public informational meeting on the Town of Weymouth’s Municipal Vulnerability Preparedness (MVP) Report, a planning document designed to assist the Town in enhancing resilience to anticipated climate-change impacts. The meeting will provide residents with an opportunity to become fully acquainted with the community’s current vulnerabilities and to hear top recommendations for building Weymouth’s resilience through on-the-ground, proactive projects. The meeting will be facilitated by Stantec’s Urban Places Group of Boston, a certified consultant of the state’s MVP Program. The meeting will begin at 7:00 pm in the Town Council Chambers at Weymouth Town Hall (75 Middle Street).

“The severe damage we saw from this winter’s nor’easters illustrates just how vulnerable Weymouth is to climate change,” **said Mayor Robert Hedlund.** “Residents know firsthand that action is needed, and the Municipal Vulnerability Preparedness Program is our first step in planning projects that will improve our resilience and better protect our residents, infrastructure, and natural resources. I thank the Conservation Commission and Planning Department for spearheading this important initiative.”

The MVP Program provides assistance to cities and towns to complete comprehensive, local vulnerability assessments and develop action-oriented plans to prepare for climate change. Through the MVP Program, municipalities complete an “anywhere at any scale” [Community Resilience Building \(CRB\) workshop](#) that identifies key climate-related hazards, vulnerabilities, and strengths, and prioritizes specific actions that a community

might take to reduce risks and build resilience. All climate-change scenarios are based on newly developed projections from the Northeast Climate Science Center at UMass-Amherst and are available to the public through the state’s new website, the [resilient MA Climate Clearinghouse](#).

Weymouth’s CRB workshop was coordinated earlier this year by the Town’s Planning and Conservation staff in collaboration with its emergency management team, engineers and public works staff, Waterfront Committee, Conservation Commission, harbormaster, and local civic groups and watershed associations. Stantec’s Urban Places Group of Boston provided technical assistance as the Town’s MVP-certified consultant.

Among the climate-related hazards considered by workshop participants, the top hazards identified for Weymouth were (1) coastal flooding and sea level rise, (2) extreme storms, (3) extreme temperatures, and (4) drought. Weymouth’s MVP Report outlines specific categories of concerns and challenges related to these hazards, identifies current strength and weakness in the community, and provides top recommendations to improve resilience to climate change and improve long-term protection for Weymouth’s residents, infrastructure, and natural resources. A draft of the Town’s MVP Report is available through the [Planning Department’s website](#). Key priorities and projects identified in the report include rebuilding existing seawalls and other coastal infrastructure, improving stormwater management, developing a communication plan to raise awareness about hazard mitigation, and protecting the Town’s water supply and critical environmental resources.

By completing the MVP planning process, Weymouth has been designated an “MVP Community” and is eligible for MVP Action Grants and other opportunities through the Commonwealth. Results of the MVP report will be used to inform the Town’s local planning documents, public works projects, and future grant applications.

###