



MASSACHUSETTS DEPARTMENT OF
CONSERVATION AND RECREATION

Roxbury Heritage State Park Signature Park Project



DCR Public Meeting

April 10, 2017, 6:30 pm -8:30 pm
Hawthorne Youth and Community Center
Roxbury, MA 02199



Commonwealth of Massachusetts

Governor

Charles D. Baker

Lieutenant Governor

Karyn E. Polito

Energy and Environmental Secretary

Matthew A. Beaton

Department of Conservation and Recreation Commissioner

Leo P. Roy

dcr
Massachusetts



DCR Mission Statement



*To protect, promote and enhance our
common wealth of natural, cultural
and recreational resources
for the well-being of all.*

DCR - Cultural Resource Stewards

- Over 2,000 historic sites within DCR's 450,000 acres
- Over 100 are listed in the National Register of Historic Places
- 12 National Historic Landmarks



DCR - Cultural Resource Stewards

- Responsible for the protection of cultural resources representing over 12,000 years of history
- Buildings, structures, landscapes, archaeological sites and archival resources



Meeting Purpose

- Provide an update on the Roxbury Heritage State Park Signature Park Project construction and exhibit design.
- Respond to questions and community concerns about the project



Roxbury Heritage State Park: Important Community Resource

- Site has been used for thousands of years.
- The Dillaway Thomas House, built in the 1750s, stands as a witness to the changes in Roxbury over time.
- DCR recognizes that the property is an important community landmark and serves a symbol of Roxbury's enduring spirit.



Roxbury Heritage State Park Signature Park Project - Goals

- Create a place where the community can learn and celebrate the rich and diverse history of Roxbury.
- Create a welcoming outdoor passive recreation area and make the park more accessible, raise its profile, and engage more people in the process.



Public Process = Better Project

- Three public workshops during design process
- Numerous targeted stakeholder meetings involving community groups, cultural and academic institutions
- Outreach to Boston Public School students
- Senior roundtables
- Public process resulted in improved project scope; additional restrooms, improved entrance, expanded program space, community gallery space, a more welcoming and flexible outdoor space and more robust exhibits.



Commonwealth's Investment

Financial Commitment through EEA's Gateways Cities Program:

- o Design and permitting - \$500,000
- o Early action projects - \$250,0000
- o Construction - \$2.59 million
- o Exhibits - \$400,000

Total investment \$3.74 million

Project Construction Overview

- Project went out to bid in August
- Bids received at the end of September
- Contract awarded to Campbell Construction Group, LLC
- Construction period – February 2017-August 2017

PROJECT CONSTRUCTION UPDATE



Campbell Construction Group, LLC

- General contracting firm specializing in restoration of historic structures throughout New England, NY and NJ
- Over 50 structures on the National Register of Historic Places
- Preservation Awards for work on Northbridge Town Hall and Gloucester City Hall; recently nominated for an award for work on Theodore Roosevelt's birthplace
- Nearby projects include:
 - Repairs to the Hillside Stable – Blue Hills
 - Restoration of the Sallyport Doors - Ft Independence, Castle Island
 - United First Parish Church Cupola Repairs, Quincy
 - Rehabilitation of Magazine Beach Powder House, Cambridge

Campbell Construction Group, LLC



Minority and Local Workforce Participation

Campbell Construction Group Crew

- Minimum of 50% minority workforce on the job

Hurst Landscape and Site Services

- Minority Owned Business from Mattapan
- \$556,143.00 contract value - 21.4% of the project

Construction Logistics

- Hours of work: 6:00 AM – 3:00PM, Monday through Friday (possible Saturday work if acceptable)
- Contractor parking: limited to existing DCR lot
- No construction trailer – 3rd floor of house will be used for construction office
- Construction fence securing site
- All staging will be within the construction fence
- Periodic impacts to pedestrian access through site (Gay Street)
- Portable toilets on site, but out of sight



Construction Sequence

- Mobilization, secure construction site – *February 2017*
- Begin interior restoration efforts – *February 2017*
 - Demo, new electrical and plumbing, and new construction of interiors
- Begin Site Work – *March 2017* (weather depending)
 - Temp fence phase 2
 - Sidewalk and street closure (1 week)
 - Site demolition, exterior renovations
- Begin Site Landscaping – *April/May 2017*
 - Walkways, sidewalks, outside lighting, finishes, plantings
- Complete Interior Restoration – *June/July 2017*
 - Coordinate installation of exhibits
- Complete Sitework – *end of July 2017*
- **RIBBONCUTTING!** – *Fall 2017*

EXHIBIT DESIGN UPDATE





MASSACHUSETTS DEPARTMENT OF
CONSERVATION AND RECREATION

Exhibit Design Team

Isabel Kaubisch, Clarendon Hill Consulting

Project Manager & Public Outreach Specialist

Ed Malouf, Content Design Collaborative

Exhibit Designer

Content•Design Collaborative, LLC

- Interpretive exhibit design firm specializing in public history projects in New England, Texas, Pennsylvania, and Florida
- Has collaborated with the Department to complete visitor centers at Fall River and the Middlesex Fells as well as a nature trail project for Houghton's Pond.
- Specializes in complex storytelling using media, environmental design, artifacts and graphics.
- Current projects include:
 - o Museum of Work and Culture in Woonsocket RI
 - o Hingham Historic Society Bucket Town Exhibit
 - o Herreshoff Maritime Museum in Bristol RI

Content•Design Collaborative, LLC



What we heard from the Public

OVERALL CONSIDERATIONS

- Provide more cultural and art programming and space for community gathering
- Make house and exhibit handicap accessible
- Include digital system so people know what's coming up & about special events
- Create signage & wayfinding
- Maximize exhibit space
- Secure and maintain funding



EXHIBIT PRIORITIES

- Make RHSP a portal for Roxbury's history, culture and education
- Involve youth and develop youth programming
- Programming and accessibility for seniors



What we heard from the Public

OVERALL EXHIBIT PROGRAM DEVELOPMENT

- Create changing, dynamic and interactive exhibits attractive to all ages
- Provide more outdoor programming space
- Engage audio, visual and tactical senses through interactive exhibits
- Create a sense of place by providing period furnishings



INTEGRATION WITH OVERALL PROJECT

- Integrate the house with the landscape and exhibits
 - Interpretive signage and wayfinding
 - Interpret site:
 - Views of Boston, Puddingstone, Roxbury Russet, Link site to Native American lifeways



What we heard from the Public

CREATE AN EXPERIENCE

- Focus on Roxbury people and places
- Facilitate the understanding of various aspects of Roxbury's history
- "It is part of my history"
- Fireplace – tell the "cooking story"
- Tell the story of the house
- Exploration of historic rooms
- Viewing of historic artifacts
- Tell the story of Native Americans and people of color:
Make sure all cultures are provided for in the Roxbury story: African-American, Irish, Native American etc.
- Put street maps on the floor of community gallery
– speak about people today
- Include a map of Roxbury with destinations



Exhibit Themes

OVERARCHING THEME

- The Dillaway Thomas House stands as a symbol of the enduring spirit of Roxbury.

SUBTHEMES

- The Dillaway-Thomas House (circa 1750) and grounds of Roxbury Heritage State Park played a significant role in the early history of Roxbury, including probable use as a headquarters of the Continental Army during the American Revolution.
- The Dillaway-Thomas House stands today as one of the few surviving examples of mid-18th-century residential architecture in the Boston area; its survival and restoration have been championed through generations of sustained efforts by Roxbury citizens and supporters.
- Roxbury Heritage State Park offers unique venues for exploring the natural history of the region: its geology, geography and native ecosystems, and agricultural past.
- Roxbury Heritage State Park offers an accessible, welcoming vantage point and portal for exploring, preserving, and expanding the rich history and culture of Roxbury and its people, past and present.

Exhibit Program: First floor

New Entry and
Messaging system

Areas 1 + 2 Hearth & Home

*Pre-war colonial life
at home*

Area 3 The Siege of Boston

Witness to history

Areas 4 + 6 The Historic House

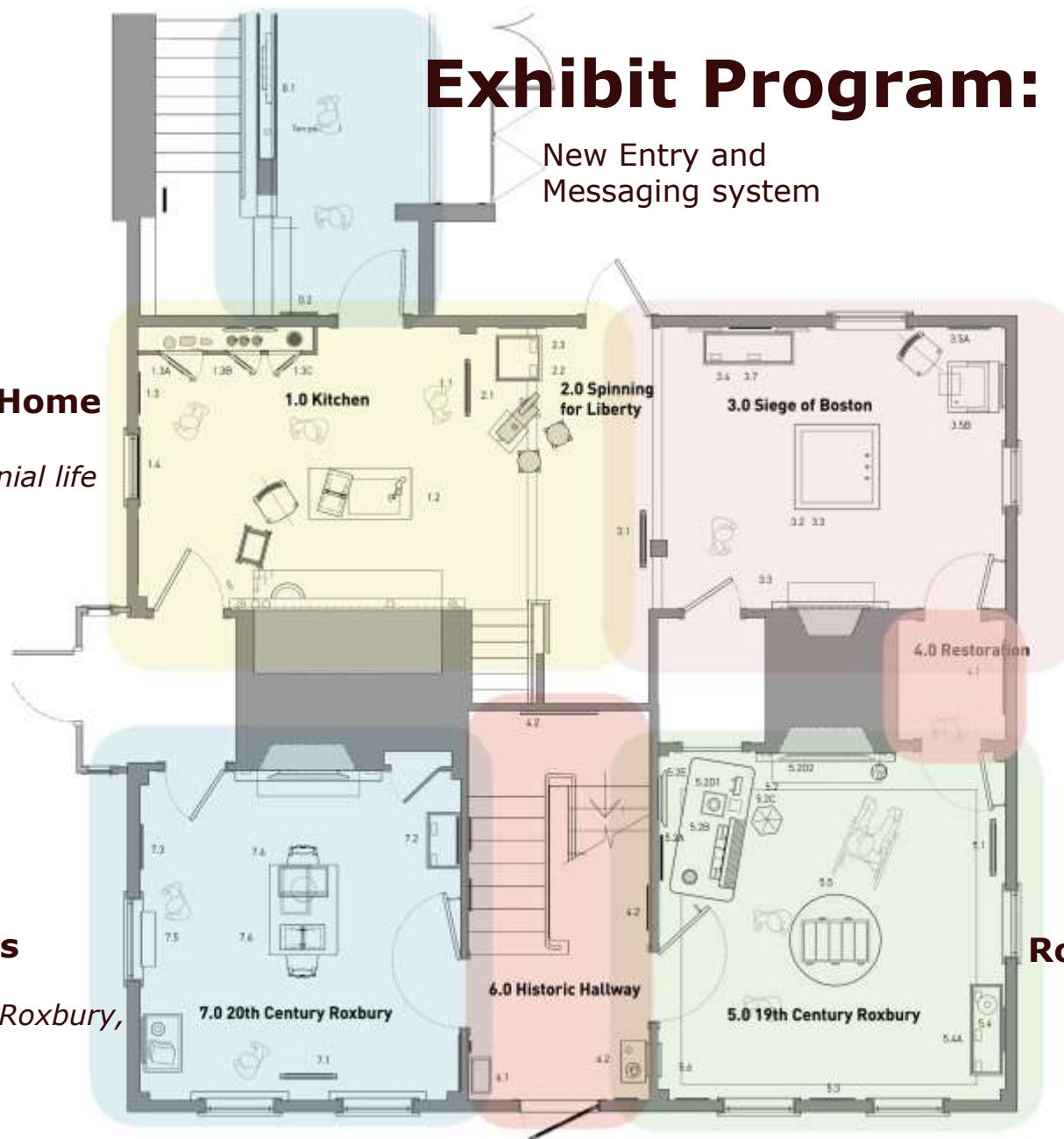
*Early construction and
architectural styles*

Area 5 Roxbury Transformed

*The Dillaway family,
19th century Roxbury*

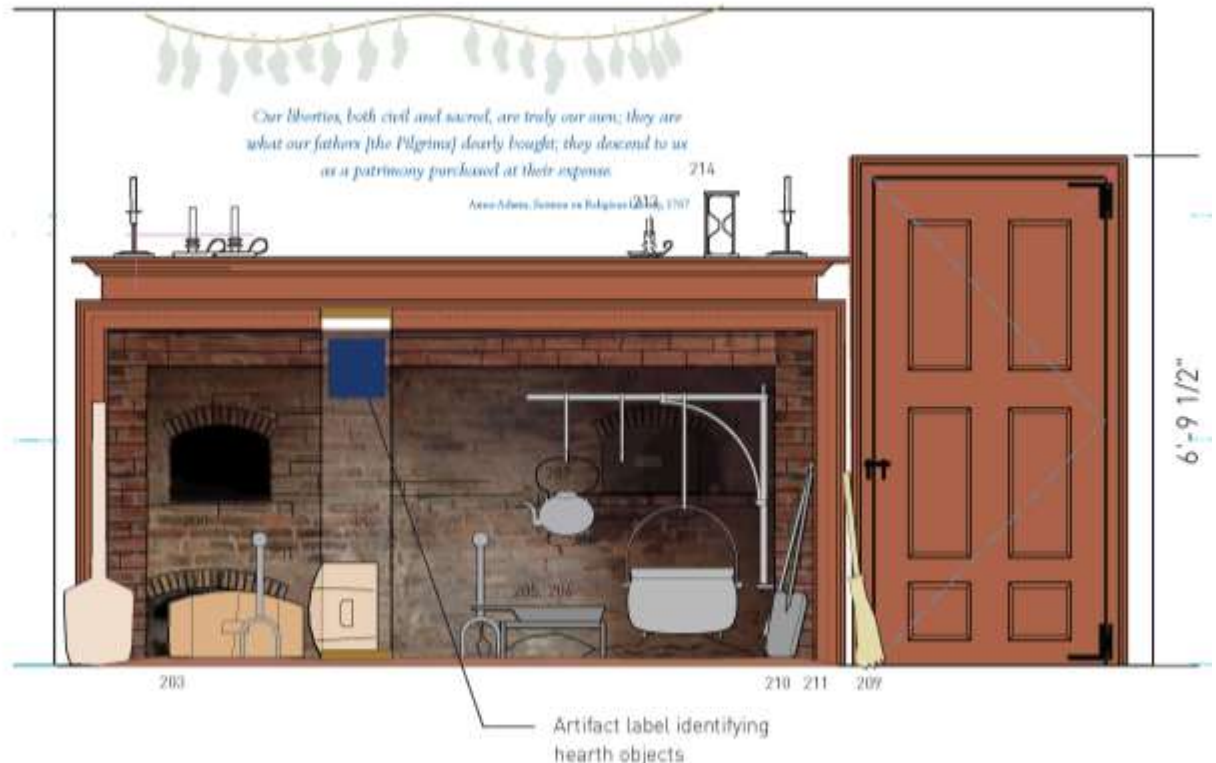
Area 7 New Voices

*20th century Roxbury,
Civic action*



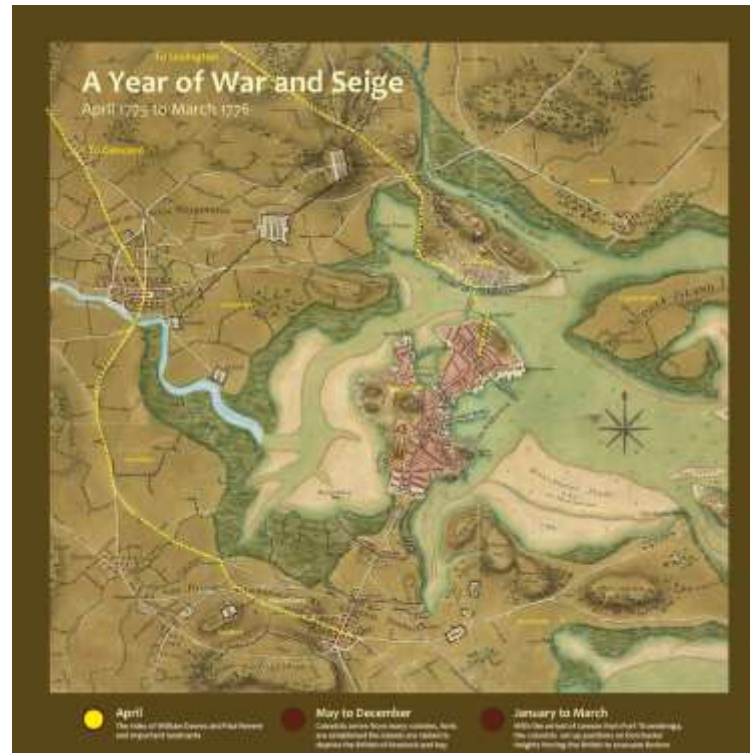
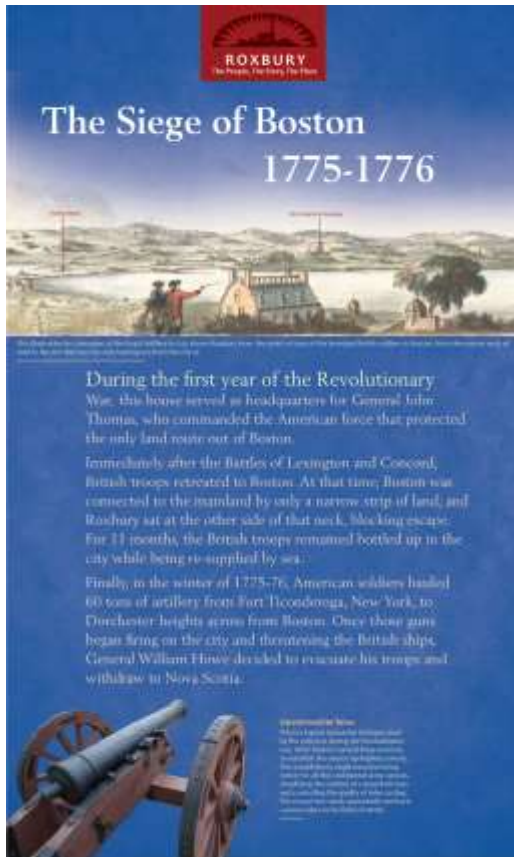
Areas 1 + 2

Hearth & Home



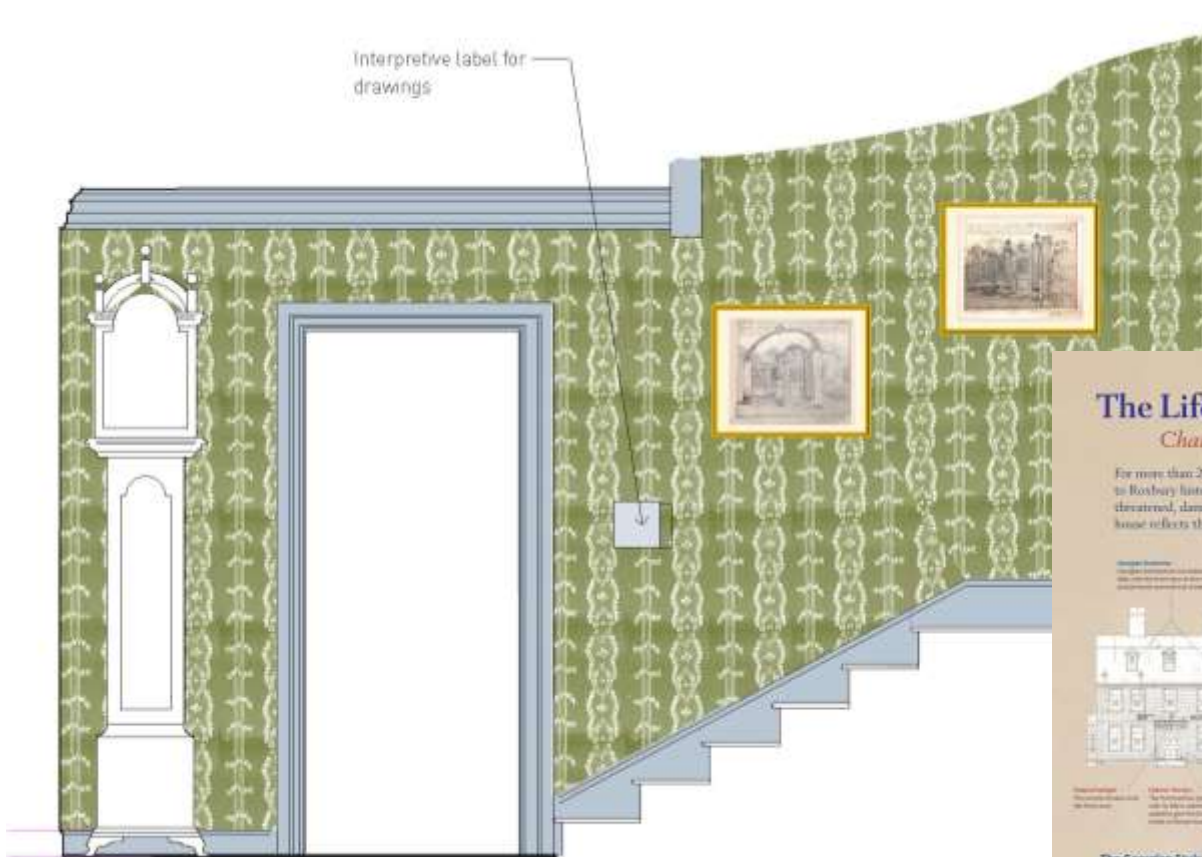
Area 3

The Siege of Boston



Areas 4 + 6

The Historic House



The Life Story of a House

Changing, Surviving

For more than 250 years, this house has been a witness to Roxbury history. It has also been renovated, adapted, threatened, damaged, and restored. The story of the house reflects the changes in the world around it.

Georgian Revival
The house was built in the late 19th century, during the Georgian Revival movement. It was designed to look like a Georgian house, but with modern conveniences.

Federal Revival
The house was built in the early 19th century, during the Federal Revival movement. It was designed to look like a Federal house, but with modern conveniences.

Colonial Revival
The house was built in the late 18th century, during the Colonial Revival movement. It was designed to look like a Colonial house, but with modern conveniences.

The Georgian Style
1700-1760
Roxbury was a center of Black history when England's King George II was brought over from England. This simple, two-story house was built after the king's death, but still displays Georgian style.

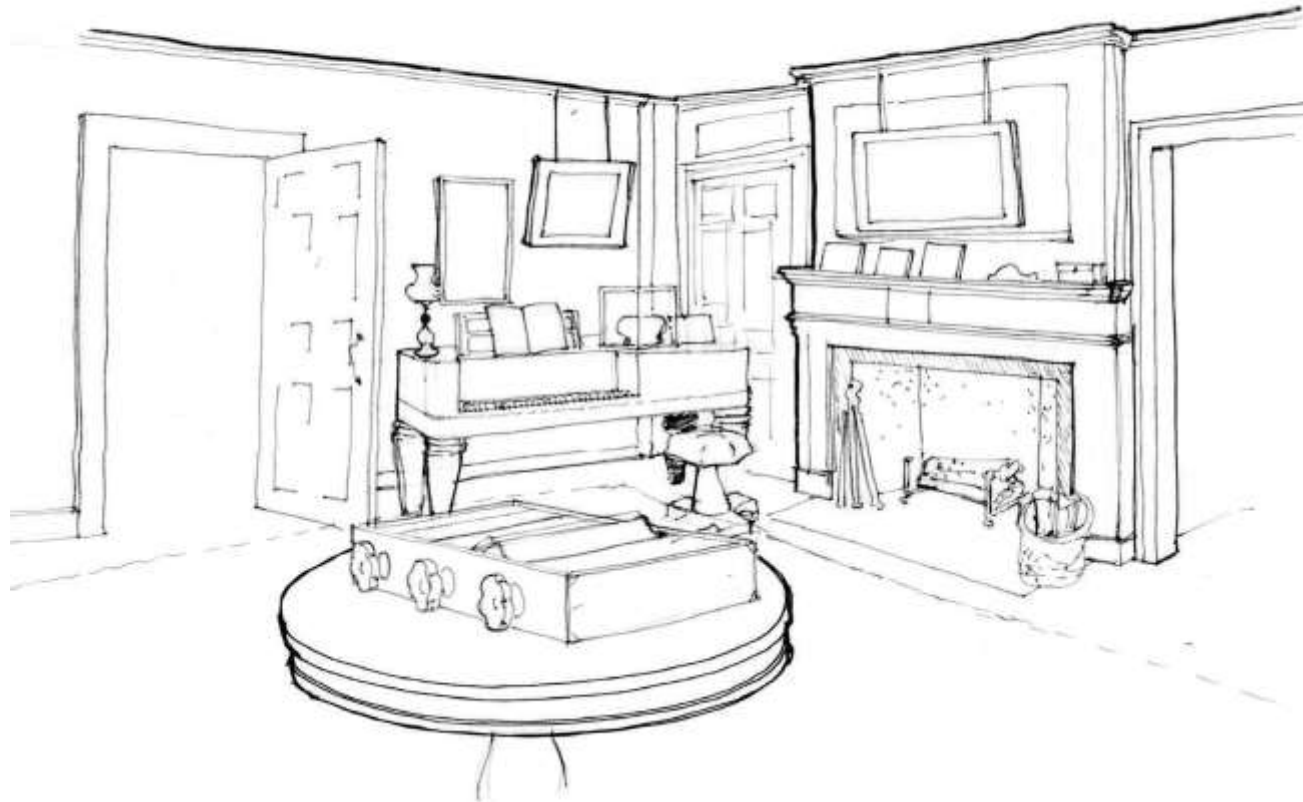
The Federal Style
1780-1820
After America won its independence, leaders in politics and industry began to build new, more republican government buildings. In the early days, the Rev. Porter remodelled the house to make it suit the popular Federal style.

Colonial Revival
1880-1920
In 1915, the City of Boston purchased this property as land for a new public school, but members of the community recognized the historic importance of the house and worked to save it. In the 1920s, the Roxbury Historical Society began a restoration of the house.

Area 5 Roxbury Transformed



P18 Annexation 20 x 33



Area 7 New Voices

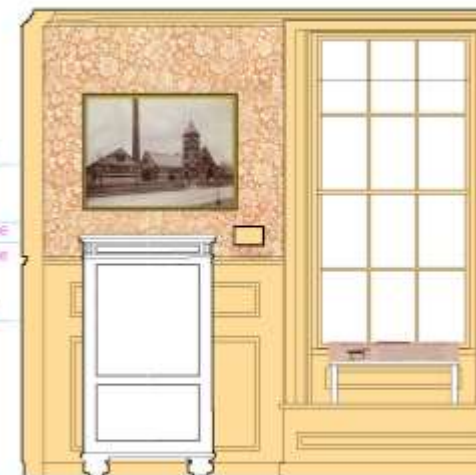


P20 Exhibit Intro 24 x 40



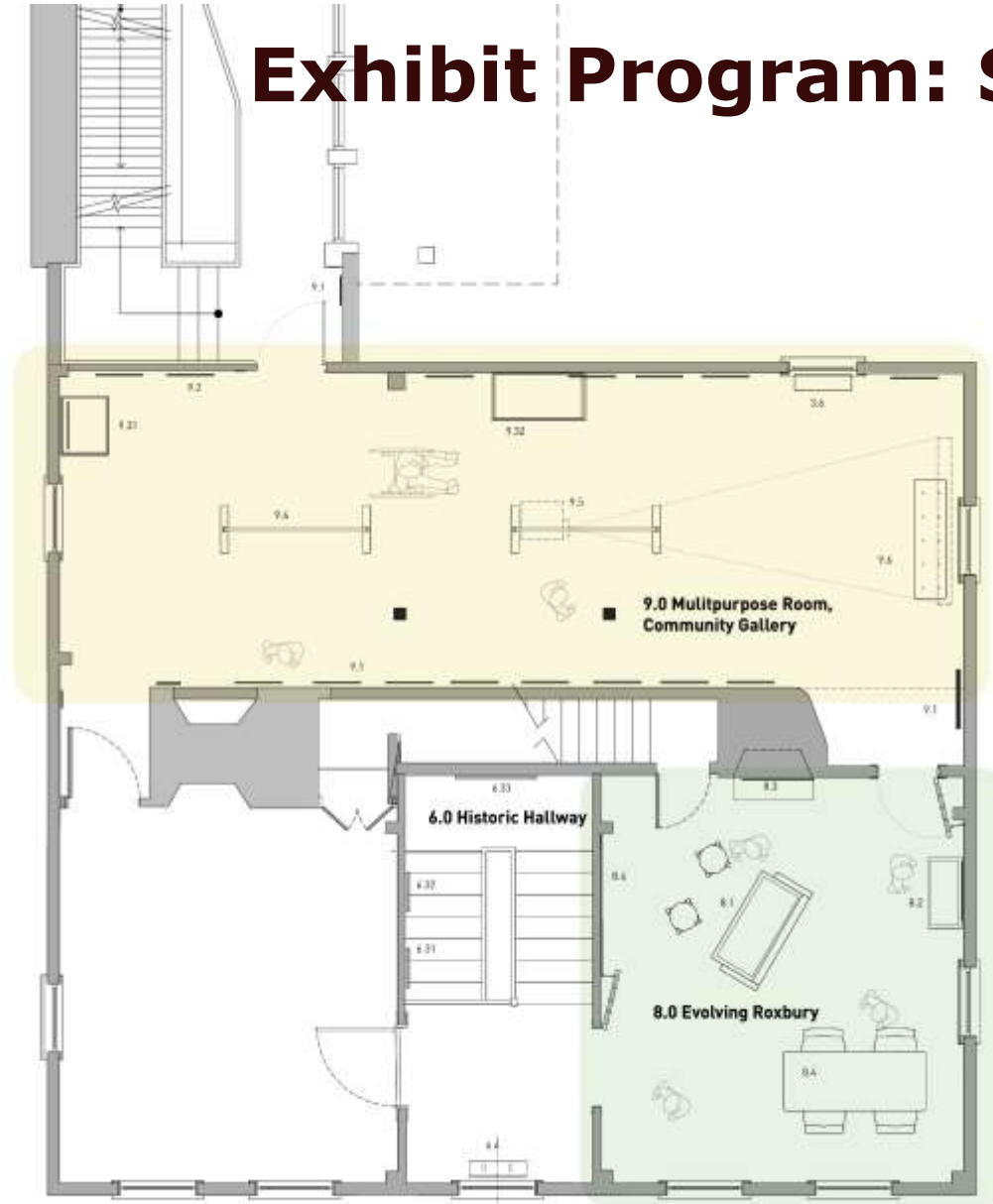
PF18 Butterfield photo

R1 Timilty School



20th Century Object
241 Cabinet Victoria

Exhibit Program: Second floor



The Community

Gallery and meeting space

Roxbury Today

Time travel, Archeology

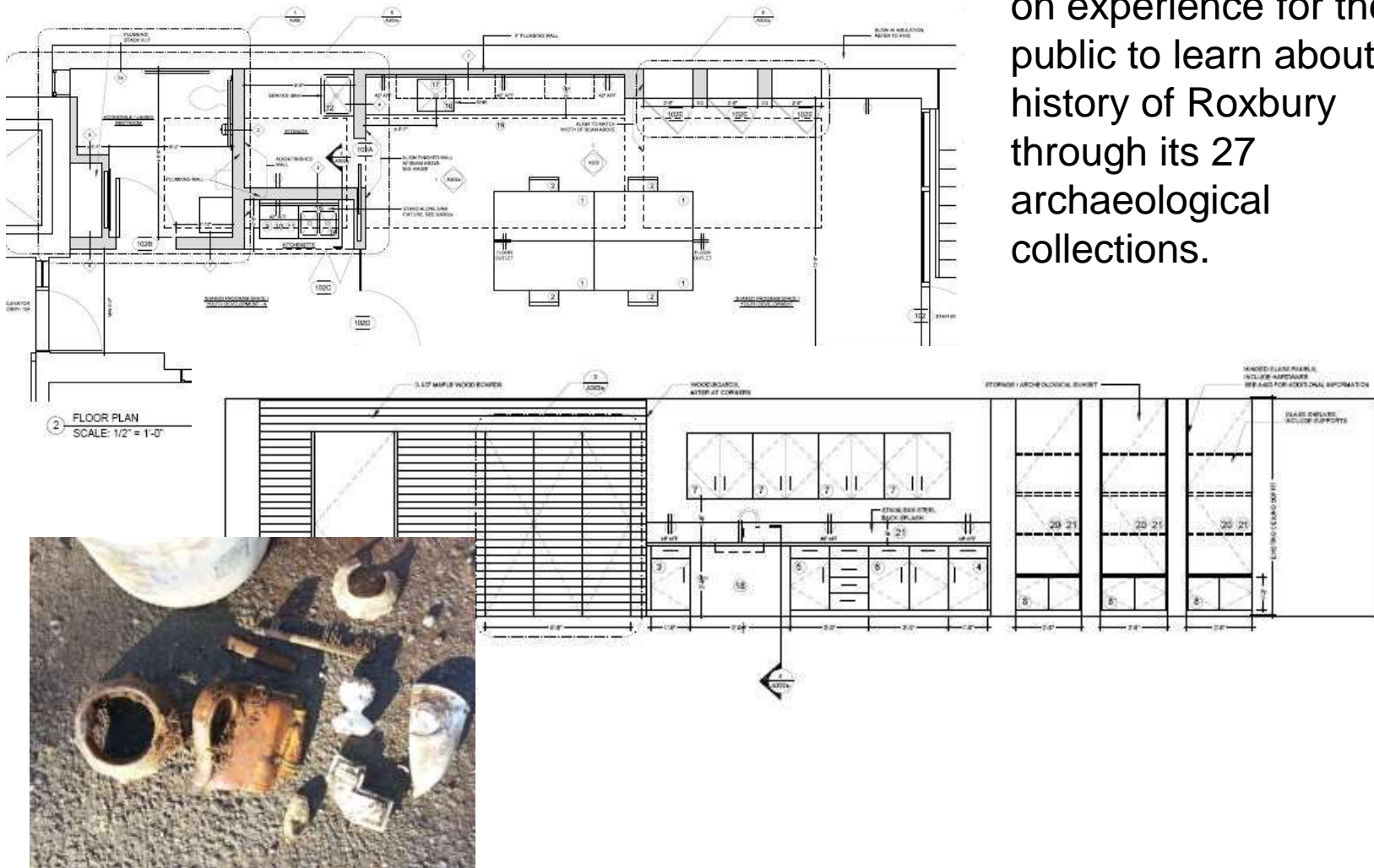
Areas 8 + 9

Roxbury Today



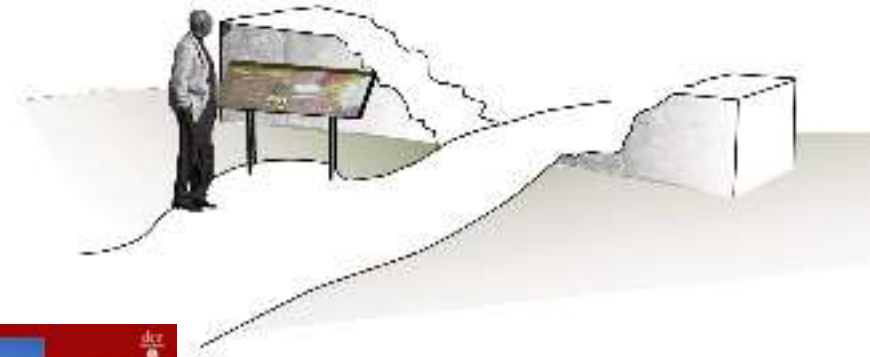
Archaeology Lab/Shared Program Space

Goal: provide a hands-on experience for the public to learn about the history of Roxbury through its 27 archaeological collections.



Area 10

Exterior Interpretation



ROXBURY HERITAGE STATE PARK

Roxbury "Puddingstone," naming a conglomerate

More than 500 million years ago, as the continents drifted into their current locations, rocks from all over the world were deposited in the Boston Basin. Chunks of speckled granite, quartzite, and pink rhyolite mixed together. Then, deep under ground, finer sand and minerals squeezed and pressed between the larger pieces, forming a kind of natural cement. Later, over thousands of years, surface erosion exposed some of this conglomerate rock. When the first English settlers found so many outcroppings of rock, they named the town Roxbury (borough), and they called the rock "puddingstone."

With its lumpy texture, the puddingstone looks like a giant rock pudding.

When an older rock is pushed into the earth and it is covered by sand, silt, and clay, it is called a conglomerate. The sand, silt, and clay are called the matrix. The larger rocks are called the clasts. The matrix is made of sand, silt, and clay. The clasts are made of granite, quartzite, and rhyolite. The matrix is made of sand, silt, and clay. The clasts are made of granite, quartzite, and rhyolite.

The first building constructed from Roxbury Puddingstone. It is now part of the city of Boston. It is now part of the city of Boston. It is now part of the city of Boston.

The first building constructed from Roxbury Puddingstone. It is now part of the city of Boston. It is now part of the city of Boston. It is now part of the city of Boston.

The first building constructed from Roxbury Puddingstone. It is now part of the city of Boston. It is now part of the city of Boston. It is now part of the city of Boston.


The first building constructed from Roxbury Puddingstone. It is now part of the city of Boston. It is now part of the city of Boston. It is now part of the city of Boston.


ROXBURY HERITAGE STATE PARK

A Revolutionary View from Roxbury, 1781

Before the Back Bay was filled in, Roxbury guarded the entrance to a small neck of land that led into Boston. During the American Revolution—how this very house—General John Thomas helped enforce the Siege of Boston.

To the left, far in the distance, Thomas must see Breed's Hill and Bunker Hill. Straight ahead was central Boston, and to the right, the Dorchester Heights, where cannon placed in March of 1775 finally drove the British out of Boston.





Shelley-Love House, Back Bay, Breed's Hill, Bunker Hill, Dorchester Heights

Area 10

Exterior Interpretation

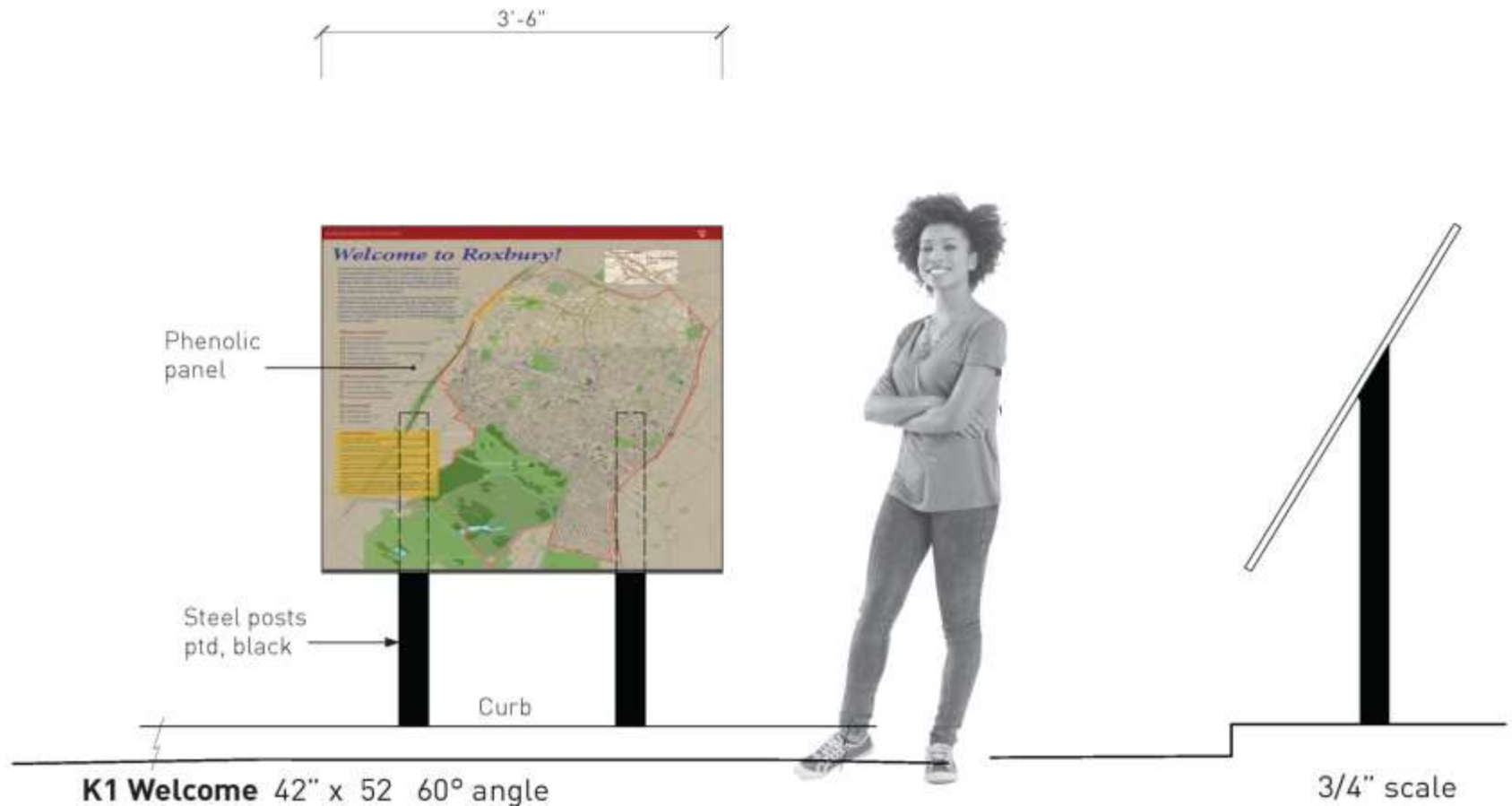


Exhibit Design Next Steps and Timeline

- Working with Roxbury Historical Society, finalize graphics and text – April
- Finalize contract documents for bidding - late April/early May
- Fabrication and installation of exhibits – summer 2017
- Ribboncutting – Fall 2017

Community Engagement - How you can stay involved and informed

- **Project Website**
 - o DCR will post general project updates
- **Regular Construction Updates**
 - o Two week look-aheads sent out to our project mailing list and will be posted on project website
- **Progress meetings**
 - o June – Update on house construction and exhibit



MASSACHUSETTS DEPARTMENT OF
CONSERVATION AND RECREATION

Questions and Conversation



Additional Information

For more information:

<http://www.mass.gov/eea/agencies/dcr/public-outreach/public-meetings/>

If you have questions on this project or if you wish to subscribe to a DCR general information or project-related listserv: contact DCR's Office of Community Relations at 617-626-4973 or Mass.Parks@state.ma.us.