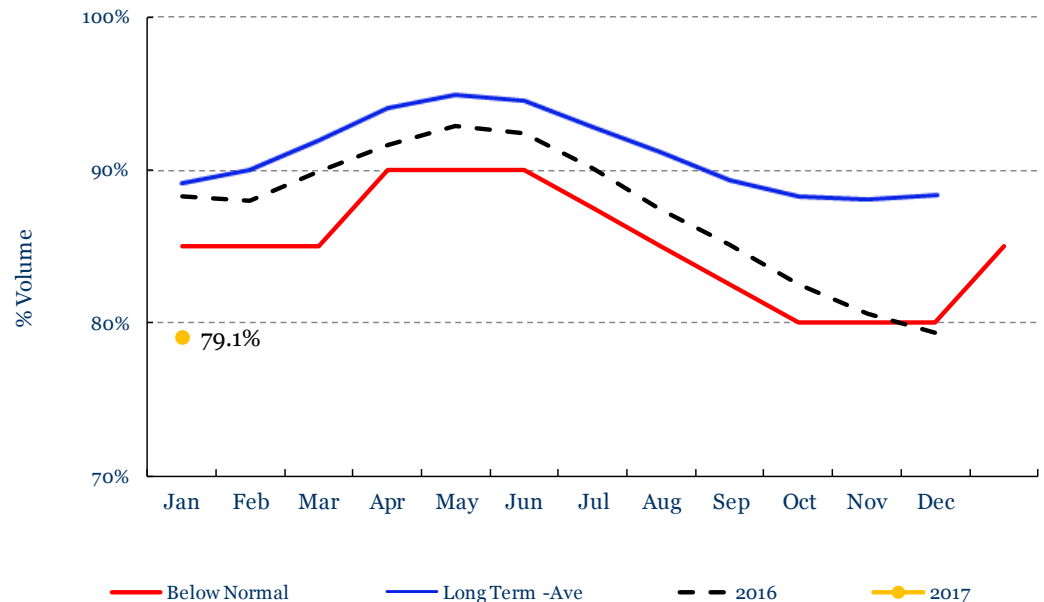




Quabbin Status as of Jan. 4, 2017

- Current Elevation: 518.62 ft
- Current Volume: 326,626 MG (79.2%)
- At current capacity Quabbin can supply the system's current demand* for 4.9 years

Quabbin Reservoir

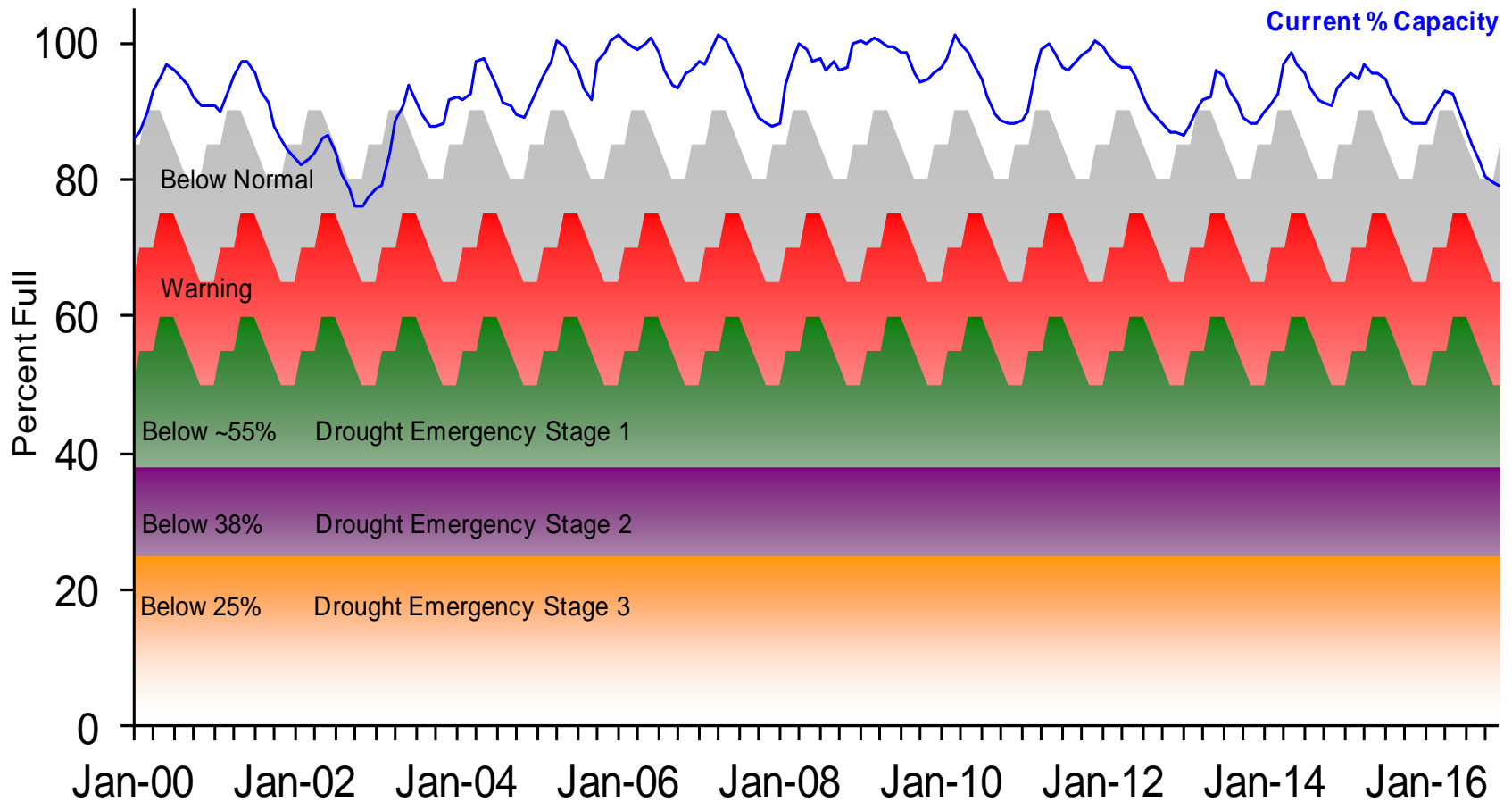


* Calculated using an average daily demand of 200 MGD



Quabbin Reservoir Levels relative to Drought Stages

Quabbin Reservoir Levels With Drought Emergency Planning Stages





Quabbin Reservoir Projections – January 2017

Quabbin Reservoir levels have been modeled for the next 12 months (January 2017 – December 2017) given varying yield conditions, and an annual demand of 220 mgd (includes a 10 mgd increase from current annual demand levels). It should be noted that December 2016 was the 13th driest December in the 68 year history of Quabbin yields. The monthly yield for December 2016 was 3,042.29 MG.

Table 1 below shows the ending drought status for the time period being simulated.

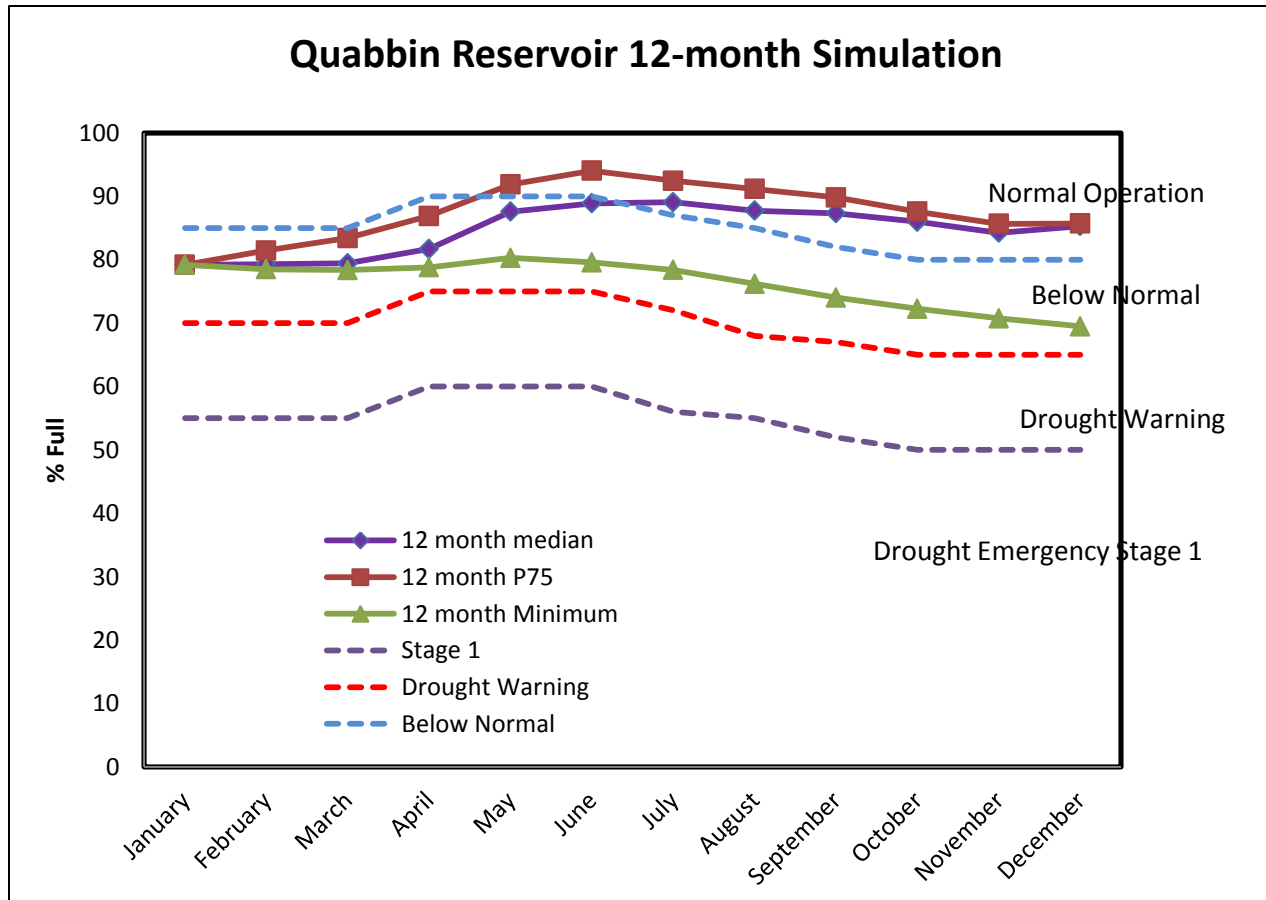
**Table 1: Quabbin Reservoir Status with Varying Reservoir Yield Scenarios
Looking Forward from January 1, 2017**

	1-Month	3-Months	6-Months	12-Months
Median Yield	Below Normal	Below Normal	Normal	Normal
Dry (75th Percentile)	Below Normal	Below Normal	Below Normal	Normal
Driest (of Record)	Below Normal	Below Normal	Below Normal	Below Normal

Evaluating a 24-month scenario using the driest conditions, Quabbin Reservoir would end in the Drought Warning Stage Level.



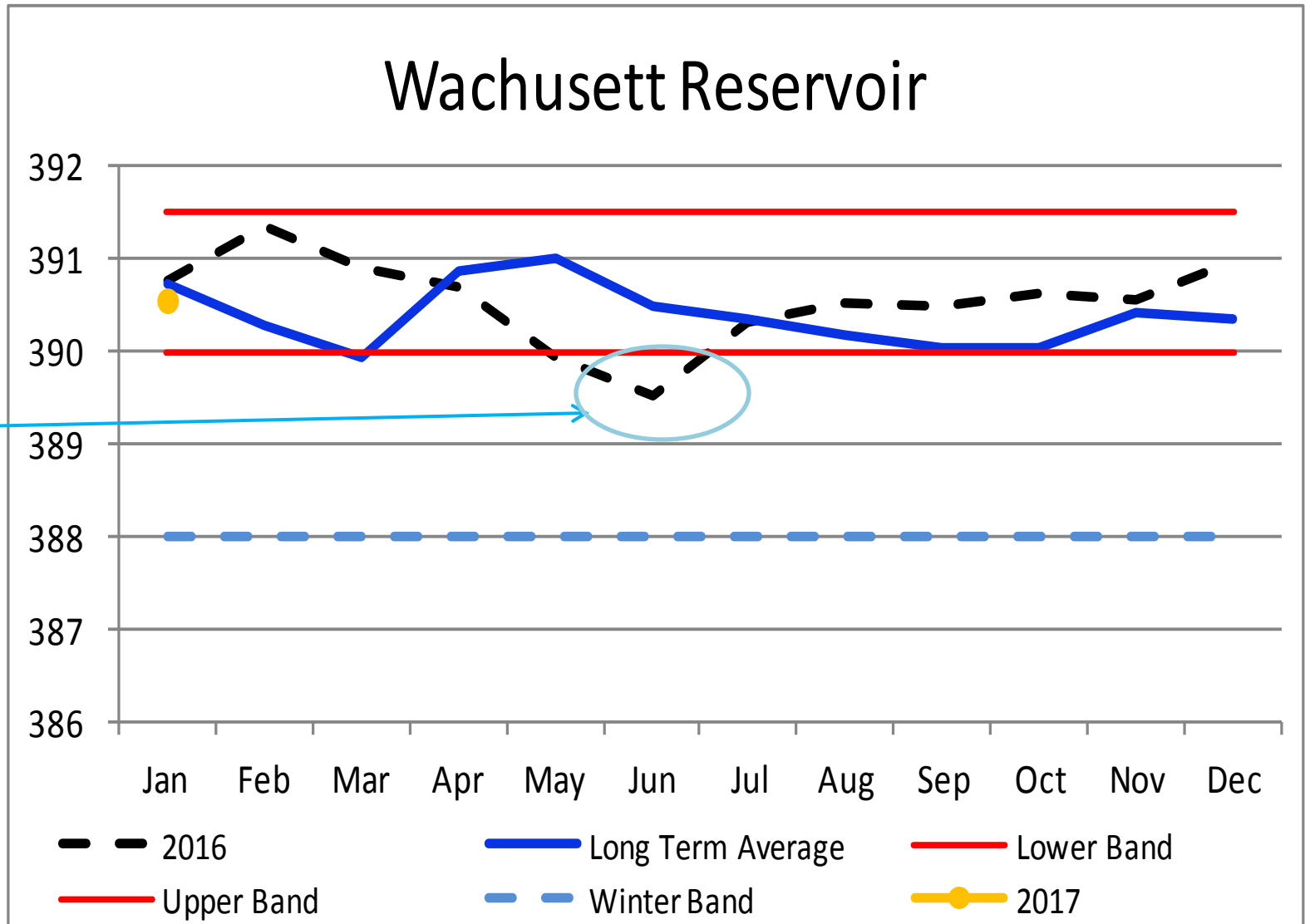
Quabbin Projections using historical data



12 month Minimum uses actual drought yield data beginning in January 1965 to forecast next 12 months.



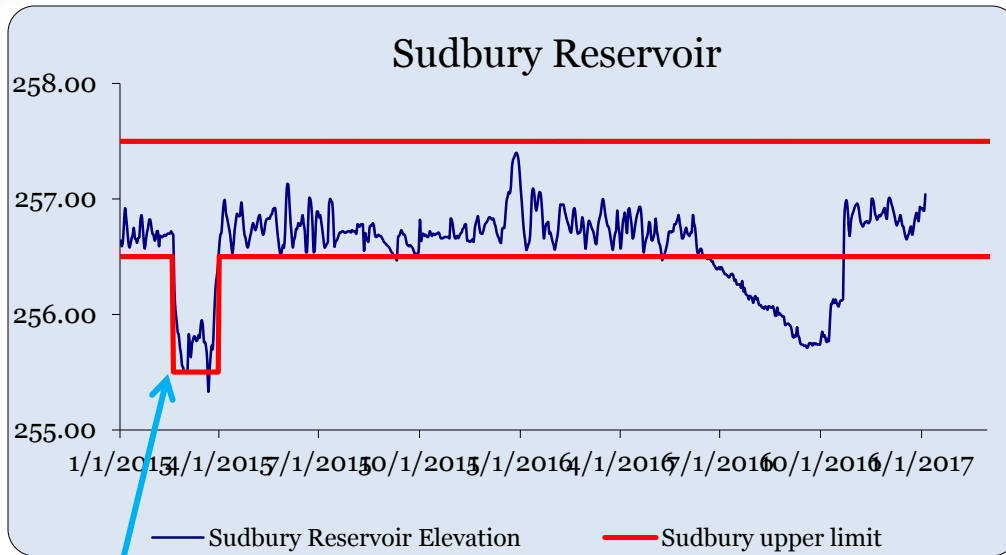
Wachusett Reservoir Status – Normal operations



Drawdown for construction project



Current Sudbury System Elevations



Winter drawdowns suspended for 2016/17 season due to drought conditions.

Winter drawdown for record snowpack

Winter drawdown for invasives plants control

