

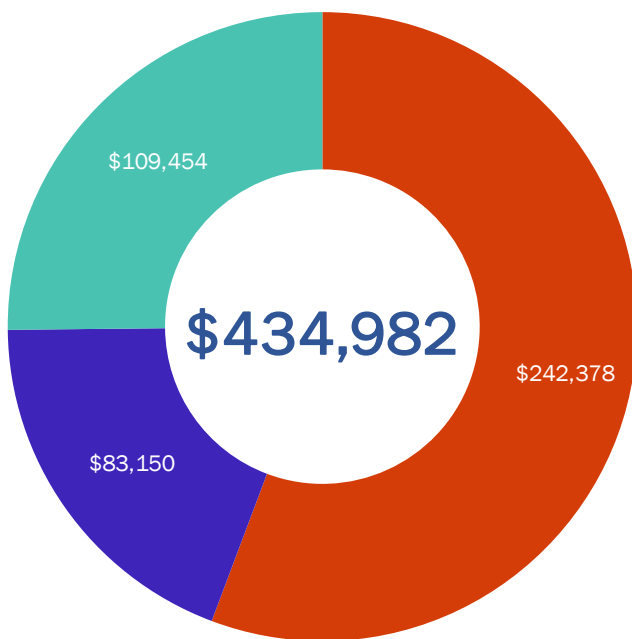
2019 Charles E. Shannon Community Safety Initiative

HOLYOKE / CHICOPEE

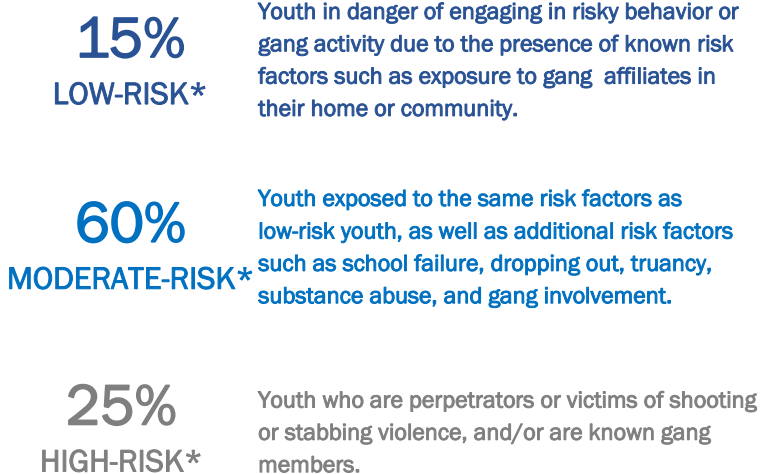
Funded Partners | Career Point, Chicopee Boys & Girls Club, Hampden County Sheriff's Department, Holyoke Boys & Girls Club, Holyoke High School, Holyoke Police Department and Holyoke Community College

Funded by the Executive Office of Public Safety and Security's Office of Grants and Research, the Charles E. Shannon Community Safety Initiative (Shannon) is modeled after the Office of Juvenile Justice and Delinquency Prevention's Comprehensive Gang Model. Shannon is a multi-sector approach used to address a community's gang and youth violence problem. Each community receiving Shannon funding demonstrates the presence of risk factors for youth and gang violence. Shannon participants must be between the ages of 10-24 years.

FUNDING ALLOCATION



2,217 YOUTH SERVED



* % of youth assessed for level of risk.

STRATEGIES & OUTCOMES



* Positive Youth Development refers to intentional efforts to provide opportunities for you to enhance their interest, skills, and abilities.

Community Risk Factors

MASSACHUSETTS

HOLYOKE

CHICOPEE

Total Population (2018 Estimate)	6,892,503	40,358	55,582
Population Lives in Poverty	10.0%	29.7%	15.3%
Unemployment Rate	2.94%	4.80%	3.90%
Total School Population (2018-2019)	1,007,005	6,018	8,531
Economically Disadvantaged	32.8%	78.1%	53.7%
High School Dropout Rate	1.9%	4.9%	3.6%

Sources: www.census.gov/quickfacts; profiles.doe.mass.edu/; www.mass.gov/lwd/economic-data/

Gang Activity in Holyoke/Chicopee

9

Street Gangs

323

Gang Members

In 2019, the Holyoke/ Chicopee Shannon CSI confirmed nine gangs comprising 323 members. Gangs include the Appleton Posse, Bloods, Crips, Dirty South, La Familia, Latin Kings, R2D (Ready to Die) and others. The gangs were centered in Holyoke but were active across the Holyoke Chicopee border. Recruitment of youth into gangs occurred in schools, through peer relationships, and via social media.

5-Year Crime Trends for Young People Ages 10-24, 2015-2019

MASSACHUSETTS SIMPLE ASSAULT

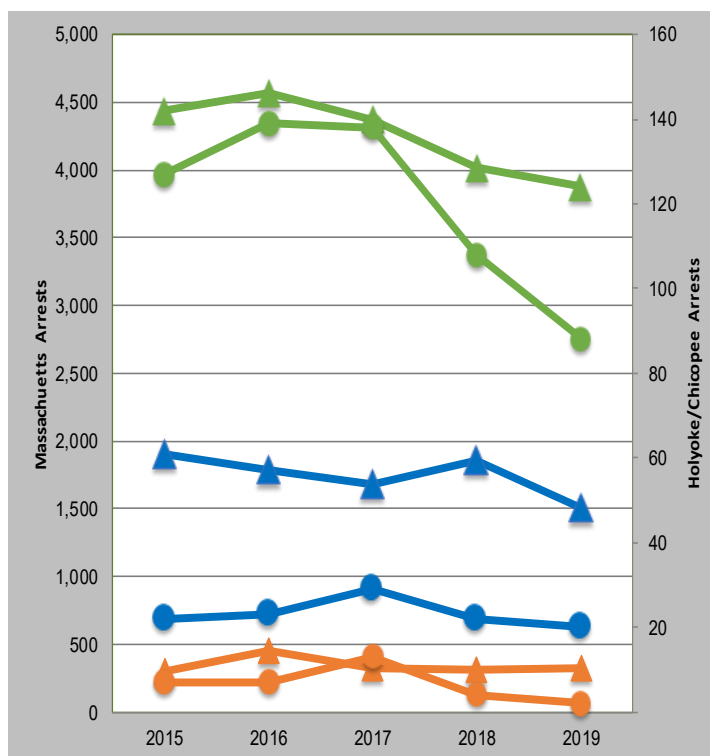
Simple assault arrests declined by 12.7% since 2015 (563 arrests)

MASSACHUSETTS AGGRAVATED ASSAULT

Aggravated assault arrests declined by 20.6% since 2015 (391 arrests)

MASSACHUSETTS ROBBERY

Robbery arrests increased by 10% since 2015 (30 arrests)



HOLYOKE/CHICOPEE SIMPLE ASSAULT

Simple assault arrests declined by 30.7% since 2015 (39 arrests)

HOLYOKE/CHICOPEE AGGRAVATED ASSAULT

Aggravated assault arrests declined by 9.1% since 2015 (2 arrests)

HOLYOKE/CHICOPEE ROBBERY

Robbery arrests declined by 71.4% since 2015 (5 arrests)