



MARINE FISHERIES REGULATION SUMMARY as of June 1, 2021

This is not an official copy of the Commonwealth's marine fishery laws and regulations.

The information in this document outlines the general laws and regulations governing recreational and commercial fishing in the waters under the jurisdiction of the Commonwealth of Massachusetts. It is not comprehensive. Although every attempt has been made to keep this document accurate and up to date, this is not an official copy of the Commonwealth's marine fishery laws and regulations, and should not be consulted as such. The closure maps depicted in this document demonstrate certain specific closures but are not inclusive of all closures that may affect a certain fishing activity. Please review official copies of [M.G.L. c. 130](#) and [322 CMR](#) for full and accurate descriptions of marine fisheries laws and regulations.

MASSACHUSETTS DIVISION OF MARINE FISHERIES
RULES & REGULATIONS SUMMARY
(as of June 1, 2021)

Refer to Chapter 130 and 322 CMR for details.

TABLE OF CONTENTS

<u>PAGE</u>	<u>FISHERY</u>
3	RECENT REGULATORY CHANGES
7	RECREATIONAL FISHING
8	HOOK AND LINE (includes Rod & Reel)
10	LOBSTERING commercially with Traps in state waters
14	LOBSTERING commercially with Traps - using Student Lobster Permit
18	LOBSTERING commercially with SCUBA in state waters
20	LOBSTERING recreationally with Traps or SCUBA using the Non-Commercial Lobster Permit
23	POTTING for Sea Bass
25	POTTING for Scup
27	POTTING for Whelks
30	FISH WEIRS
31	SINK GILLNETTING (Fishing on or near bottom)
33	SURFACE GILLNETTING (Fishing on or near surface)
35	MOBILE GEAR: Trawls, Scottish/Danish Seines, and Pair Seines – no regulatory fishery endorsements or inshore net
38	MOBILE GEAR: Trawls, Scottish/Danish Seines, and Pair Seines - with small-mesh regulated fishery endorsements.
42	NORTHERN SHRIMP: Small-mesh fishing in federal waters
43	TRAWLING, or SEINING with Inshore Net Permit
44	PURSE SEINING for Sea Herring or Menhaden
47	SEA SCALLOP DREDGES
49	COMMERCIAL SHELLFISHING
52	COMMERCIAL BAY QUAHOG DREDGING
53	OCEAN QUAHOG DREDGING
55	SURF CLAM DREDGING
58	SURF CLAM DREDGING for bait purposes in contaminated areas
59	SEA URCHIN FISHERY WITH DREDGES
60	SEA URCHIN FISHERY WITH SCUBA
61	REGULATED FISHERY PERMIT ENDORSEMENTS
62	RECREATIONAL FISHING LIMITS
64	COMMERCIAL FISHING LIMITS
68	MOBILE GEAR CLOSURE MAP
69	COMMERCIAL GROUND FISH CLOSURE MAPS
71	COD CONSERVATION ZONE MAPS
72	BOSTON HARBOR PURSE SEINE RESTRICTED AREA MAP
73	GILLNET CLOSURE IN CAPE COD BAY
74	LARGE WHALE SEASONAL CLOSURE AREA MAP
75	SINGLE POT EXEMPTION AREA MAP
76	CAPE COD BAY VESSEL SPEED LIMIT RESTRICTED AREA

MASSACHUSETTS DIVISION OF MARINE FISHERIES
RULES & REGULATIONS SUMMARY
(as of June 1, 2021)

Refer to Chapter 130 and 322 CMR for details.

The following regulatory changes occurred during June 1, 2020 through May 31, 2021

(Note: This is not a comprehensive list of all regulatory changes enacted during this period. It may not include regulations changed by emergency actions, regulations that have been superseded by more recent changes or the Director's declaration of annual fishery specifications). Please contact the author for more information or suggestions.

April Conditional Commercial Groundfish Closure (322 CMR 8.05). The April conditional commercial groundfish closure in the Gulf of Maine was lifted for 2021. This action allowed commercial fishermen using certain gears to fish for groundfish in state waters during April between 42°00' north (Plymouth) and 42°30' north (Marblehead). DMF did not lift this closure for gillnets and longlines set overnight to access this conditional April opening due to concerns regarding right whale entanglements in the area. The lifting of this conditional closure is reviewed annually in response to an analysis of annual catch by the state waters only groundfish fleet. When the closure is lifted, existing mobile gear closures and spawning closures in the area still apply.

Blue Crab Trapping Prohibition (322 CMR 6.19). The taking of blue crabs with cylindrical or six-sided traps is now prohibited. Fishermen may continue to fish for blue crabs using gears like dip nets and baited lines, as well as collapsible traps and lift traps that are actively tended and fished in an open configuration. This prohibition was implemented to prevent diamondback terrapin turtles from being captured and subsequently drowning in crab traps. These turtles are listed as threatened under the Massachusetts Endangered Species Act and share nearshore estuarine habitat with blue crabs and may be caught incidentally in crab trap gear.

Buoy Line Diameter Rules (322 CMR 12.06). Effective May 1, 2021, all traps set in Massachusetts' waters are subject to a maximum buoy line diameter. The maximum buoy line diameter for commercial trap gear is 3/8-inch, whereas it is 5/16-inch for recreational lobster and crab trap gear. Establishing maximum buoy line diameters prevents Massachusetts fishermen from setting gear with heavy buoy lines thereby reducing the potential for injury and mortality to protected species should buoy line entanglements occur. Additionally, it establishes a de facto gear marking system to differentiate Massachusetts' trap gear from heavier gear that may be fished in other jurisdictions.

Buoy Line Modifications (322 CMR 12.06). Effective May 1, 2021, all commercial trap fishermen are required to fish buoy lines with a breaking strength of 1,700 pounds. This may be accomplished by fishermen fishing fully formed 1,700-pound weak rope or by rigging their existing buoy lines with approved contrivances. A list of approved contrivances may be found on [DMF's website](#), and it includes the South Shore Sleeve and a variety of splices involving 1,700-pound weak rope. Each contrivance is to be two-feet long and inserted every 60' within the top 75% of the buoy line. Based on a study by the New England Aquarium, 1,700-pound weak rope presents a much lower risk of injury or mortality to right whales should an entanglement occur.

Closure of Cape Cod Canal to Commercial Striped Bass Fishing (322 CMR 6.07). DMF closed the Cape Cod Canal's shoreline to commercial striped bass fishing in 2020. Anglers fishing along the Canal are now prohibited from retaining any striped bass measuring 35" in total length or greater, or possessing more than one striped bass per angler. These restrictions extend within 1,000 feet of the canal's shoreline, except for commercial fishermen fishing on open commercial fishing days actively transporting striped bass lawfully caught in another location. This exemption covers the transiting of the Canal in possession of commercial striped bass, the landing of fish at Taylor's Point or Sandwich Marina, and the trucking of fish across adjacent surface roads. The Canal is defined as extending from the northernmost point at

MASSACHUSETTS DIVISION OF MARINE FISHERIES
RULES & REGULATIONS SUMMARY
(as of June 1, 2021)

Refer to Chapter 130 and 322 CMR for details.

President's Road and the seawardmost point at the state pier at Massachusetts Maritime Academy on the west end to the seawardmost points of the jetties at the east end.

Commercial Menhaden Rules (322 CMR 6.43). DMF enacted a series of new rules to enhance enforcement and compliance in the state's commercial menhaden fishery when it is conducted under a 6,000-pound trip limit. This includes a maximum purse seine size of 450-feet long by 48-feet deep and a requirement that all menhaden caught be immediately brought on board and stowed in 55-gallon barrels or standard fish totes upon retention. A volume-to-weight equivalency was developed for these containers with a level filled fish tote weighing the equivalent of 117 pounds, and a level filled barrel weighing 350 pounds. Therefore, 51 fish totes or 17 barrels are the equivalent to the 6,000-pound trip limit. Fish totes and barrels may be used interchangeably, with a three fish tote to one-barrel ratio used to determine trip limit compliance. Additionally, to conform state regulations to the Atlantic States Marine Fisheries Commission's Interstate Fishery Management Plan, if Massachusetts opts into the Episodic Event Set-Aside Fishery, then all participants are required to obtain a bait dealer permit and report their catch into SAFIS as a bait dealer on a nightly basis.

Commercial Striped Bass Fishing (322 CMR 6.07). Several adjustments were made to the commercial striped bass fishing limits for 2021. The fishery now opens on the first open commercial fishing day on or after June 16, previously the season opened on June 24. The fishery will now commence with three open commercial fishing days—Mondays, Tuesdays, and Wednesdays—rather than two open fishing days—Mondays and Wednesdays. For 2021, the first open fishing day will be Wednesday, June 16. Beginning October 1, provided the quota has not been taken and the fishery is still open, the number of open fishing days per week will increase to five: Mondays – Fridays. DMF has taken similar actions through in-season adjustments in recent years. The commercial fishery will now close on November 15 should Massachusetts' annual commercial striped bass quota not be taken prior to this date. As the open fishing days are now consecutive, commercial fishermen will be afforded the opportunity to fish overnight tides spanning open fishing days. Accordingly, fishermen may retain, land, and sell fish on Monday and then begin fishing again on Monday and continue fishing into Tuesday morning to land and sell fish again Tuesday. However, if doing so, they may not possess or sell more than one limit during any single calendar day.

Ghost Panels in Black Sea Bass Pots (322 CMR 6.12). DMF regulations require all black sea bass pots be rigged with a panel that is fitted to the trap with biodegradable materials. This panel is to be rigged with biodegradable materials allowing it to break from the pot if the gear is lost or abandoned. This allows fish to escape from the pot and the pot to cease catching fish. For 2021, the regulation is being amended to clarify the opening covered by this panel is to be at least three-inches by six-inches, consistent with the Atlantic States Marine Fisheries Commission's Interstate Fishery Management Plan.

Purse Seining for Bluefin Tuna (322 CMR 6.04 and 7.01). After 2020, all regulated fishery permit endorsements for bluefin tuna purse seining were retired and DMF no longer permits this activity. Accordingly, DMF has also eliminated this permit endorsement type and strictly prohibited the use of purse seining for bluefin tuna by regulation. Since the early 2000s, DMF has restricted this purse seining activity through permit conditions.

Recreational Circle Hook Requirement for Striped Bass (322 CMR 6.03). Beginning in 2021, all recreational anglers—including those fishing onboard for-hire vessels—who are fishing for striped bass with bait are required to use inline (non-offset) circle hooks. This rule does not apply to any artificial lure with bait attached. Bait is defined as any marine or aquatic organism, live or dead, whole or parts thereof. Striped bass caught on an unapproved method of take (while targeting other finfish species)—such as a baited J hook or treble hook—must be returned to the water immediately without unnecessary injury. This

MASSACHUSETTS DIVISION OF MARINE FISHERIES
RULES & REGULATIONS SUMMARY
(as of June 1, 2021)

Refer to Chapter 130 and 322 CMR for details.

circle hook requirement is mandated coastwide through the Atlantic States Marine Fisheries Commission's Interstate Fishery Management Plan in order to increase the survival of striped bass caught and released in the recreational fishery. Recreational discard mortality has grown to be the greatest source of fishing mortality on the striped bass population. When used during bait fishing, inline circle hooks reduce the likelihood of "deep hooking", which in turn decreases the chance that a released fish will die due to injuries sustained from being caught.

Recreational Gulf of Maine Cod and Haddock (322 CMR 6.03). For 2021, DMF established an April 1 – April 14 and September 15 – September 30 open fishing season for Gulf of Maine cod. During this open fishing season, the per angler bag limit is one fish with a minimum size of 21-inches. For Gulf of Maine haddock, the open fishing season of April 1 through the last day of February. The per angler bag limit is 15 fish and the minimum size is 17-inches.

Recreational Lobster and Crab Trap Season (322 CMR 6.02). DMF enacted a November 1 – May 15 closed season for recreational lobster and crab trap gear. Accordingly, all recreational trap fishermen are to remove their gear from state waters by November 1 and may not reset their gear until after May 15. This closure applies only to buoyed recreational lobster and crab trap gear. Unbuoyed gear that is fished and retrieved from the shoreline is not subject to this prohibition. Requiring the seasonal removal of trap gear from the waters at times and places where right whales are known to aggregate significantly reduces the risk that right whales may become entangled in this gear and it will reduce the amount of recreational lobster and crab trap gear that may become abandoned or lost due to seasonal weather events. The closure also provides DMF and the Massachusetts Environmental Police with ample opportunities to remove any abandoned or lost gear that is observed before the onset of winter weather and the migration of right whales into our waters.

Seasonal Commercial Trap Gear Closure (322 CMR 12.04). The existing seasonal commercial trap gear closure to protect right whales was expanded in both time and space. Previously, the Massachusetts Restricted Area—which included all state waters north of Cape Cod south of 42°12' north latitude and state waters east of 70°00' west longitude—was closed from February 1 – April 30. Beginning in 2021, this closure was expanded northward to include all state waters north of Cape Cod to the New Hampshire border. Additionally, the closure now runs through May 15. However, DMF has the regulatory authority to lift or extend this closure based on the presence or absence of right whales. For 2021, DMF lifted this closure on May 14, as aerial surveillance indicated right whales had migrated out of state waters. Requiring the seasonal removal of trap gear from the waters at times and places where right whales are known to aggregate significantly reduces the risk of right whale entanglements.

Seasonal Gillnet Closure in Cape Cod Bay (322 CMR 12.04). DMF modified the spatial boundaries of its January 1 – May 15 gillnet closure in Cape Cod Bay to protect right whales. This action extended the closure to include those waters west of 70°30' west longitude between 42°00' north latitude (Plymouth) and 42°12' north latitude (Scituate). Requiring the seasonal removal of gillnet gear from the waters at times and places where right whales are known to aggregate significantly reduces the risk of right whale entanglements.

Seasonal Small Vessel Speed Limit (322 CMR 12.05). The March 1 – April 30 seasonal 10-knot speed limit for vessels less than 65-feet overall length operating in Cape Cod Bay was extended through May 14. This action was taken due to the continued presence of right whales in Massachusetts waters in early May. Ship strikes are a major source of injury and mortality to right whales and data shows the frequency and severity of these ship strikes is reduced if a vessel is operating at 10-knots or less. Vessels 65' and larger are subject to federal speed limit rules to protect right whales.

MASSACHUSETTS DIVISION OF MARINE FISHERIES
RULES & REGULATIONS SUMMARY
(as of June 1, 2021)

Refer to Chapter 130 and 322 CMR for details.

Summertime Summer Flounder Pilot Program (322 CMR 6.22). DMF renewed its seasonal summertime summer flounder pilot program for 2021. This pilot programs allows trawlers participating in the Period II (June 10 – October 31) summer flounder trawl fishery to possess and land two daily limits of summer flounder and black sea bass lawfully caught and retained over consecutive open fishing days.

Whelk Gauge Size Increase (322 CMR 6.20). In 2019, DMF implemented a schedule to increase the whelk gauge size to $3 \frac{5}{8}$ -inches through a series of $\frac{1}{8}$ -inches biennial increases to the gauge width. Accordingly, for 2021 the gauge width was increased from 3-inches to $3 \frac{1}{8}$ -inches. This $3 \frac{1}{8}$ -inch gauge width will remain in place for 2021 and 2022. In 2023, the gauge width will be increased to $3 \frac{1}{4}$ -inch. The purpose of this measure is to bring the gauge width to a size where approximately 50% of female knobbed and channeled whelks are sexually mature. In doing so, the overfished whelk resource will be afforded spawning stock protections.

MASSACHUSETTS DIVISION OF MARINE FISHERIES
RULES & REGULATIONS SUMMARY
(as of June 1, 2021)

Refer to Chapter 130 and 322 CMR for details.

FISHERY:		RECREATIONAL FISHING				
PERMIT REQUIRED:				Resident		Non-Resident
	(1)	For-hire vessels			
		Head boat issued to vessels carrying seven or more paying customers.		\$130		\$260
		Charter boat issued to vessels carrying up to six paying customers.		\$65		\$130
	(2)	Recreational Fishermen*		\$10		\$10
* Fee is waived for recreational fishermen that are 60 years of age or older. Persons who are disabled under M.G.L. c. 19C sec. 1 do not need to hold a recreational fishing permit. Massachusetts will accept recreational fishing permits from Rhode Island, Connecticut and New Hampshire.						
PERMIT RESTRICTIONS:		<ul style="list-style-type: none">Recreational and commercial fishing during the same trip is prohibited. The sale of any state regulated finfish taken during a for-hire trip is prohibited. These prohibitions shall not apply to Atlantic bluefin tuna. [322 CMR 6.41].Taking patrons recreational fishing requires a for-hire permit. [322 CMR 7.10]				
GEAR RESTRICTIONS:		<ul style="list-style-type: none">Striped bass fishermen may not use any device other than a device that will not puncture, pierce or otherwise cause invasive damage fish to handle or remove the fish from the water [322 CMR 6.07]All recreational anglers fishing for striped bass are required to use inline circle hooks when fishing with whole or cut natural baits. This does not apply to artificial lures with natural baits attached. [322 CMR 6.07]				
AREA/SEASON CLOSURES:	LOCATION		DURATION		REGULATION	
	Fish Weir Buffer Zone		Year-round		322 CMR 4.03	
	Winter Cod Conservation Zone		November 15 – Jan. 31		322 CMR 8.07	
	Spring Cod Conservation Zone		April 16 – July 21		322 CMR 8.07	
PROHIBITED SPECIES:		Sturgeon [322 CMR 6.16] ; Atlantic salmon [322 CMR 6.06] ; river herring [322 CMR 6.17] ; wolfish, ocean pout and windowpane flounder [322 CMR 6.03] ; and certain shark species including basking sharks, dusky sharks, sand tiger sharks, and white sharks [322 CMR 6.37]				

MASSACHUSETTS DIVISION OF MARINE FISHERIES
RULES & REGULATIONS SUMMARY
(as of June 1, 2021)

Refer to Chapter 130 and 322 CMR for details.

FISHERY:	HOOK AND LINE (includes Rod and Reel)
-----------------	--

PERMIT REQUIRED:				<u>Resident</u>		<u>Non-Resident</u>
	(1)	Commercial Fishermen				
		Boat 99+ feet Coastal or Offshore Lobster		\$260		\$520
		Boat 60 - 99 feet		\$195		\$390
		Boat 59 feet or less		\$130		\$260
		Rod & Reel		\$35		\$100
	If certain species are being taken or landed:					
	(2)	Species-specific regulated fishery endorsement, including groundfish (if vessel has no federal groundfish or monkfish permit)		\$30		\$60

PERMIT RESTRICTIONS:	<u>Control Dates:</u> <ul style="list-style-type: none"> March 6, 2008 control date for all hook and line fisheries excluding striped bass. [322 CMR 7.04] September 8, 2013 control date for striped bass. [322 CMR 7.04] December 31, 2018 control date for groundfish [322 CMR 7.04]
-----------------------------	--

REPORTING REQUIREMENTS:	Trip level reporting for permit holders who do not hold a federal permit and submit federal vessel trip reports [G.L. c. 130 s. 21] and 322 CMR 7.01]
--------------------------------	---

GEAR RESTRICTIONS:	<ul style="list-style-type: none"> Hook size is restricted when longlining for cod inside the winter flounder spawning closure area from Feb 1 – May 31. Hooks must exceed 11/16” gape or circle hooks must measure at least ½” inside [322 CMR 8.04] Rod & Reel permit holders may not use handlines or longlines [322 CMR 7.00]. Maximum vessel size: 72 ft. [322 CMR 8.03] Striped bass fishermen may not gaff undersized fish [322 CMR 6.07]
---------------------------	--

OTHER RESTRICTIONS:	<ul style="list-style-type: none"> Retain any recreational catch during a commercial trip. Exception: If a giant Atlantic bluefin tuna is taken by rod and reel it may be retained and sold on a trip when recreational catch is present [322 CMR 6.41].
----------------------------	---

AREA/SEASON CLOSURES:	LOCATION	DURATION	REGULATION
	Fish Weir Buffer Zone	Year-round	322 CMR 4.03
	Cape Cod Canal	Striped Bass Season	322 CMR 6.07
	Groundfish Closure I: Plymouth to Marblehead	April 1 – April 30 (conditional)	322 CMR 8.05
	Groundfish Closure II: Boston to New Hampshire	May 1 – May 31	322 CMR 8.05

MASSACHUSETTS DIVISION OF MARINE FISHERIES
RULES & REGULATIONS SUMMARY
(as of June 1, 2021)

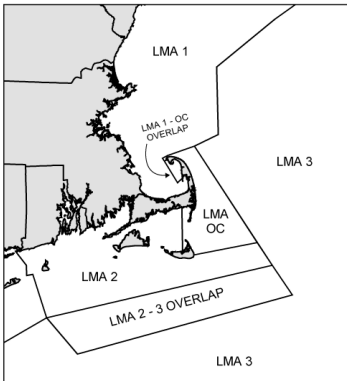
Refer to Chapter 130 and 322 CMR for details.

AREA/SEASON CLOSURES (cont'd)	LOCATION	DURATION	REGULATION
	Groundfish Closure III: East of Cape Cod	May 1 – May 31	322 CMR 8.05
	Groundfish Closure IV: Marblehead to New Hampshire	June 1 – June 30	322 CMR 8.05
	Groundfish Closure V: Plymouth to Marblehead	October 1 – January 31	322 CMR 8.05
	Winter Flounder Spawning Closure (exception for line trawling of cod with gear restrictions above).	Feb. 1 – May 31	322 CMR 8.04
	Winter Cod Conservation Zone	Nov. 15 – Jan. 31	322 CMR 8.07
	Spring Cod Conservation Zone	April 16 – July 21	322 CMR 8.07
	Harwich Reef	Year-round	322 CMR 8.09

PROHIBITED SPECIES:	Sturgeon [322 CMR 6.16], Atlantic salmon [322 CMR 6.06], river herring [322 CMR 6.17], ocean pout, windowpane flounder and wolfish [322 CMR 6.03], and certain shark species including basking sharks, dusky sharks, sand tiger sharks, and white sharks [322 CMR 6.37], and striped bass taken by gear other than angling [G.L. c. 130 s. 100B and 322 CMR 6.07].
----------------------------	--

MASSACHUSETTS DIVISION OF MARINE FISHERIES
RULES & REGULATIONS SUMMARY
(as of June 1, 2021)

Refer to Chapter 130 and 322 CMR for details.

FISHERY:		LOBSTERING commercially with TRAPS. <i>Not including lobstering with a student permit. See other appropriate summaries for details.</i>			
PERMIT REQUIRED:				Resident	Non-Resident
	(1)	Coastal Lobster	\$310	\$570
	If certain species are being taken or landed:				
	(2)	Species-specific regulated fishery endorsement	\$30	\$60
PERMIT LIMIT:	No new permits are being issued to lobster commercially with traps in state waters or federal waters in LMA1 or LMA2; existing lobster permits are renewable and transferable [322 CMR 7.03 and 7.08]. Coastal Lobster Permits are resident only [G.L. c. 130 s. 38].				
PERMIT RESTRICTIONS:		<div></div> <ul style="list-style-type: none">• Fishermen must declare which Lobster Conservation Management Area (LCMA) they intend to fish [322 CMR 6.31 and 322 CMR 7.03].• Multiple LCMA endorsements are prohibited, except by persons with valid federal authorization for LCMA 3 who may additionally receive authorization for either LCMA 1, 2 or Outer Cape Cod. Those fishing in more than one area as designated on their permits shall observe the most restrictive of different regulations for the areas declared [322 CMR 7.03].• All coastal lobster permits must be owner-operated [322 CMR 7.03].• Transfers of coastal permits are prohibited between areas except when transferring to an area under management of an effort control plan. [322 CMR 7.03].• Transfers of permits only allowed between Commonwealth-only permit holders. [G.L. c. 130 s. 38].• Area-specific regulations, including actively fished criteria, govern the transfer of coastal permits [322 CMR 7.03].• Night fishing for lobsters is prohibited [G.L. c. 130 s. 38].• No unloading of lobster Feb 1 – April 30 from 8:00 PM through 6:00 AM [322 CMR 6.25].			
REPORTING REQUIREMENTS:	Trip level reporting [G.L. c. 130 s. 21 and 322 CMR 7.01] for permit holders who do not hold a federal permit and submit federal vessel trip reports.				
GEAR RESTRICTIONS:		<ul style="list-style-type: none">• The volume of any trap must not exceed 22,950 cubic inches [322 CMR 6.02].• LCMA 1: trap limit of 800 [322 CMR 6.13].• LCMA 2 and OCCLMA trap limit based on individual’s initial trap allocation and trap allocation transfers, not to exceed limit of 800 traps [322 CMR 6.13 and 322 CMR 7.03]• LCMA 3: trap limit based on individual’s history as approved by NMFS [322 CMR 6.13].• Year-specific trap tags required on all traps [322 CMR 6.31].• Possession and setting of non-trap structures to attract lobsters is prohibited [322 CMR 6.02].• Unlawful to abandon any trap gear or not haul any trap gear for periods exceeding 30-days [322 CMR 12.03].• Unlawful to fish trap gear configured with: (1) floating lines at the surface; (2) positively buoyant groundline; (3) buoy lines comprised of positively buoyant line except in the bottom portion not to exceed 1/3 the overall length; (4) buoy lines greater than 3/8” diameter; or (5) buoy lines with a breaking strength greater than 1,700 pounds [322 CMR 12.05].			

MASSACHUSETTS DIVISION OF MARINE FISHERIES
RULES & REGULATIONS SUMMARY
(as of June 1, 2021)

Refer to Chapter 130 and 322 CMR for details.

<p>GEAR RESTRICTIONS (cont'd):</p>	<ul style="list-style-type: none"> • Trawl maximum length: 2,500 feet [322 CMR 4.13]. • Vessel maximum size: 72 feet registered length [322 CMR 8.03]. • Use of multiple trap strings (trawls) is prohibited in the waters of Gosnold [G.L. c. 130 s. 37]. • Use of buoyed lobster cars are prohibited, except in Inshore Restricted Waters [322 CMR 6.14]. • <u>Buoy Marking</u> [322 CMR 4.13, 322 CMR 6.31 and G.L. c. 130 s. 38 and G.L. c. 130 s. 38A]: <ul style="list-style-type: none"> ○ <u>All traps, buoys and lobster cars</u> must bear fisherman's license number not less than ½" in height nor less than 1/8" in thickness or width of line (for purposes of complying with this requirement, wire traps tagged with trap tags will be considered sufficient. ○ Fisherman's buoy colors must be displayed on vessel. ○ Single Traps require a single 7"x 7" or 5" x 11" buoy; stick is optional. ○ <u>Trawls</u>: <ul style="list-style-type: none"> ▪ <u>East end</u> (South) - double buoy and one or more 3' sticks. ▪ <u>West end</u> (North) - single buoy with 3' stick and flag. ▪ Note Boston Harbor exemption. • Buoy Line Marking [322 CMR 4.13] <ul style="list-style-type: none"> ○ <u>Trawl Marking</u> <ul style="list-style-type: none"> ▪ <u>LCMA 1, LCMA 2 & OCC LCMA</u> must be marked with a 12" red mark at the top, middle and bottom of the buoy line; ▪ <u>LCMA 3</u> must be marked with 12" black mark at the top, middle and bottom of the buoy line. ○ <u>Single Trap Marking</u> <ul style="list-style-type: none"> ▪ <u>LCMA 1</u> must be marked with a 12" mark at the top, middle and bottom of the buoy line with each mark composed of at least 6" of red and 6" of white. ▪ <u>LCMA 2</u> must be marked with a 12" mark at the top, middle and bottom of the buoy line with each mark composed of at least 6" of red and 6" of black. ▪ <u>OCC LCMA</u> must be marked with a 12" mark at the top, middle and bottom of the buoy line with each mark composed of at least 6" of red and 6" of yellow. • Single pots may not be set, fished or abandoned in state-waters north of Cape Cod that are seaward of 3 miles from shore, except for those waters in southern Cape Cod Bay that are shoreward of Loran C Line 9960-X-25360 [322 CMR 12.06]. • Degradable 'ghost' panels required [322 CMR 6.02]: <ol style="list-style-type: none"> 1. rectangular opening covered by panel at least 3 ¾ x 3 ¾ inches located in outer parlor allowing unobstructed exit of lobsters from trap; 2. panel to be fastened to trap by either wood lath; cotton, hemp, sisal, or jute twine not greater than 3/16" in diameter; or non-stainless, uncoated ferrous metal not greater than 3/32" in diameter; 3. door of trap may serve as ghost panel if fastened to trap with material specified above; 4. escape vent may serve as ghost panel if incorporated into a panel constructed of, or attached to the trap with a material specified above, and upon breakdown of the degradable materials, will create an opening at least 3 3/4" square. 5. traps constructed entirely or partially of wood shall be considered to be in compliance if constructed of wood lath to the extent that deterioration of wooden component(s) will result in unobstructed opening at least 3 3/4" square.
---	--

MASSACHUSETTS DIVISION OF MARINE FISHERIES
RULES & REGULATIONS SUMMARY
(as of June 1, 2021)

Refer to Chapter 130 and 322 CMR for details.

GEAR RESTRICTIONS (cont'd):

- Escape vent minimum sizes [\[322 CMR 6.02\]](#):

<u>LCMA</u>	<u>RECTANGULAR</u>	<u>TWO CIRCULAR</u>
1	1 15/16" x 5 3/4"	2 7/16"
2, 3, & OCC	2" x 5 3/4"	2 5/8"
- 600-lb. breakaway link on buoy line required [\[322 CMR 12.06\]](#).
- Trawls of two or three traps may only be buoyed only on one end [\[322 CMR 12.06\]](#).
- Single traps must utilize an end-line that does not to exceed 3/8" diameter [\[322 CMR 12.06\]](#).

AREA/SEASON CLOSURES:	<u>LOCATION</u>	<u>DURATION</u>	<u>REGULATION</u>
	Large Whale Seasonal Trap Gear Closure	Feb 1 – May 15	322 CMR 12.04
	Single Trap Area	Year-round	322 CMR 12.06
	Fish Weir Buffer Zone	Year-round	322 CMR 4.03
	Greater New Bedford Harbor north of a line from Ricketson's Point (Dartmouth) to Wilbur Point (Fairhaven)	Year-round	322 CMR 6.29
	Outer Cape Trap Haul-Out Period	Feb 1 – April 30	322 CMR 6.02
	Upper Cape Cod Bay Whiting Area/Fixed Gear Free Zone	Sep 1 – Oct 31	322 CMR 8.06
	Harwich Reef Restricted Area	Year Round	322 CMR 8.09

MINIMUM AND MAXIMUM SIZE LIMITS [322 CMR 6.02]:		
<u>LCMA</u>	<u>MINIMUM SIZE</u>	<u>MAXIMUM SIZE</u>
1	3 1/4"	5"
2	3 3/8"	5 1/4"
3	3 17/32"	6 3/4"
OCC	3 3/8"	N/A

V-NOTCH REGULATIONS [322 CMR 6.02]:		
<u>LCMA</u>	<u>REQUIREMENT TO V-NOTCH FEMALE LOBSTER</u>	<u>RULES PERTAINING TO POSSESSION OF V-NOTCHED FEMALE LOBSTER</u>
1	Commercial fishermen fishing in LCMA 1 are required to carve a v-shaped notch in any egg-bearing female lobster at least 1/4" and not greater than a 1/2" in depth and tapering to a sharp point in the flipper next to and to the right of the center flipper as viewed from the rear of the female lobster when underside is down.	"ZERO TOLERANCE" applies. Fishermen may not possess a female lobster with a "v-shaped notch" of any size with or without setal hairs on the flipper right of the center flipper.

MASSACHUSETTS DIVISION OF MARINE FISHERIES
RULES & REGULATIONS SUMMARY
(as of June 1, 2021)

Refer to Chapter 130 and 322 CMR for details.

V-NOTCH REGULATIONS (CONT'D)		
<u>LCMA</u>	<u>REQUIREMENT TO V-NOTCH FEMALE LOBSTER</u>	<u>RULES PERTAINING TO POSSESSION OF A V-NOTCHED FEMALE LOBSTER</u>
2	Commercial lobster permit holders fishing in LCMA 2 are required to carve a v-shaped notch in any legal sized egg-bearing female lobster at least ¼” and not greater than ½” in depth and tapering to a sharp point in the flipper next to and to the right of the center flipper as viewed from the rear of the female lobster when underside is down.	Fishermen may not possess any female lobster that bears a notch or indentation in the base of the flipper that is at least as deep as 1/8”, with or without setal hairs.
3	Commercial fishermen fishing in LCMA 3 above 42°30’ are required to carve a v-shaped notch in any egg-bearing female lobster at least ¼” and not greater than a ½” in depth and tapering to a sharp point in the flipper next to and to the right of the center flipper as viewed from the rear of the female lobster when underside is down.	Fishermen may not possess any female lobster that bears a notch or indentation in the base of the flipper that is at least as deep as 1/8”, with or without setal hairs.
Outer Cape Cod	No requirement to v-notch.	Fishermen and dealers may not possess a female lobster if it possesses a “v-shaped notch” defined as a straight-sided triangular cut, without setal hairs, at least ¼” in depth and tapering to a point.
PROHIBITED SPECIES:	Edible crabs from January 1 – April 30 [G.L. c. 130 s. 40], egg-bearing lobsters [G.L. c. 130 s. 41A], v-notched female lobsters [322 CMR 6.02], Atlantic salmon [322 CMR 6.06], river herring [322 CMR 6.17], and windowpane flounder, wolffish and ocean pout [322 CMR 6.03]. Also prohibited from possessing any female lobster that is mutilated in a manner that could hide, obscure or obliterate a v-shaped notch [322 CMR 6.02]. The catch of finfish and conch must not exceed the catch of lobster by weight, else a regulated fish pot fishery permit is required [322 CMR 6.12].	

MASSACHUSETTS DIVISION OF MARINE FISHERIES
RULES & REGULATIONS SUMMARY
(as of June 1, 2021)

Refer to Chapter 130 and 322 CMR for details.

FISHERY:		LOBSTERING commercially with TRAPS – using STUDENT lobster permit												
PERMIT REQUIRED:				Resident	Non-Resident									
	(1)	Student Lobster	\$80	\$145									
PERMIT LIMIT:	Permits are granted only to full-time students over the age of 12.													
PERMIT RESTRICTIONS:	<ul style="list-style-type: none">Fishermen must declare which Lobster Conservation Management Area (LCMA) they intend to fish. [322 CMR 6.31] and [322 CMR 7.03].Multiple LCMA endorsements are prohibited [322 CMR 7.03].Permit holder not allowed to tend traps authorized under recreational permit (e.g. another family member’s traps).Night fishing for lobsters is prohibited [G.L. c. 130 s. 39].Permit valid from June 15th – September 15th only [G.L. c. 130 s. 38].Permits are resident only [G.L. c. 130 s. 38].													
REPORTING REQUIREMENTS:	Trip level reporting [G.L. c. 130 s. 21] and [322 CMR 7.01] for permit holders who do not hold a federal permit and submit federal vessel trip reports.													
GEAR RESTRICTIONS:	<ul style="list-style-type: none">The volume of any trap must not exceed 22,950 cubic inches [322 CMR 6.02]No more than 25 traps may be set [G.L. c. 130 s. 38].Year-specific trap tags required on all traps [322 CMR 6.31]Unlawful to abandon any trap gear or not haul any trap gear for periods exceeding 30-days [322 CMR 12.03].Unlawful to fish trap gear configured with: (1) floating lines at the surface; (2) positively buoyant groundline; (3) buoy lines comprised of positively buoyant line except in the bottom portion not to exceed 1/3 the overall length; (4) buoy lines greater than 3/8” diameter; or (5) buoy lines with a breaking strength greater than 1,700 pounds [322 CMR 12.05].Trawl maximum length: 2,500 feet [322 CMR 4.13].Vessel maximum size: 72 feet registered length [322 CMR 8.03].Use of multiple trap strings (trawls) is prohibited in the waters of Gosnold [G.L. c. 130 s. 37].Use of buoyed lobster cars is prohibited except in Inshore Restricted Waters [322 CMR 6.14].Escape vent minimum sizes [322 CMR 6.02]: <table><tr><td><u>LCMA</u></td><td><u>RECTANGULAR</u></td><td><u>TWO CIRCULAR</u></td></tr><tr><td>1</td><td>1 15/16” x 5 3/4"</td><td>2 7/16”</td></tr><tr><td>2 & OCC</td><td>2” x 5 3/4"</td><td>2 5/8"</td></tr></table>					<u>LCMA</u>	<u>RECTANGULAR</u>	<u>TWO CIRCULAR</u>	1	1 15/16” x 5 3/4"	2 7/16”	2 & OCC	2” x 5 3/4"	2 5/8"
<u>LCMA</u>	<u>RECTANGULAR</u>	<u>TWO CIRCULAR</u>												
1	1 15/16” x 5 3/4"	2 7/16”												
2 & OCC	2” x 5 3/4"	2 5/8"												

MASSACHUSETTS DIVISION OF MARINE FISHERIES
RULES & REGULATIONS SUMMARY
(as of June 1, 2021)

Refer to Chapter 130 and 322 CMR for details.

<p>GEAR RESTRICTIONS (cont'd):</p>	<ul style="list-style-type: none"> • <u>Buoy Marking</u> [322 CMR 4.13, 322 CMR 6.31 and G.L. c. 130 s. 38 and G.L. c. 130 s. 38A] <ul style="list-style-type: none"> ○ <u>All traps, buoys and lobster cars</u> must bear fisherman's license number not less than ½" in height nor less than 1/8" in thickness or width of line (for purposes of complying with this requirement, wire traps tagged with trap tags will be considered sufficient. ○ <u>Fisherman's buoy colors</u> must be displayed on vessel. ○ <u>Traps</u> require a single 7"x 7" or 5" x 11" buoy; stick is optional. ○ <u>Trawls</u>: <ul style="list-style-type: none"> ▪ <u>East end</u> (South) - double buoy and one or more 3' sticks. ▪ <u>West end</u> (North) - single buoy with 3' stick and flag. ▪ Note Boston Harbor exemption. • <u>Buoy Line Marking</u> [322 CMR 4.13] <ul style="list-style-type: none"> ○ <u>Trawl Marking</u> <ul style="list-style-type: none"> ▪ <u>LCMA 1, LCMA 2 & OCC LCMA</u> must be marked with a 12" red mark at the top, middle and bottom of the boy line ▪ <u>LCMA 3</u> must be marked with 12" black mark at the top, middle and bottom of the buoy line. ○ <u>Single Pot Marking</u> <ul style="list-style-type: none"> ▪ <u>LCMA 1</u> must be marked with a 12" mark at the top, middle and bottom of the buoy line with each mark composed of at least 6" of red and 6" of white. ▪ <u>LCMA 2</u> must be marked with a 12" mark at the top, middle and bottom of the buoy line with each mark composed of at least 6" of red and 6" of black. ▪ <u>OCC LCMA</u> must be marked with a 12" mark at the top, middle and bottom of the buoy line with each mark composed of at least 6" of red and 6" of yellow. • Single pots may not be set, fished or abandoned in state-waters north of Cape Cod that are seaward of 3 miles from shore, except for those waters in southern Cape Cod Bay that are shoreward of Loran C Line 9960-X-25360 [322 CMR 12.06]. • Trawls of two or three traps may not be buoyed on both ends [322 CMR 12.06]. • 600 lb. breakaway link on buoy line required [322 CMR 12.06]. • Possession and setting of non-trap structures to attract lobsters is prohibited [322 CMR 6.02]. • Degradable 'ghost' panels required [322 CMR 6.02]: <ol style="list-style-type: none"> 1. rectangular opening covered by panel at least 3 ¾ x 3 ¾ inches located in outer parlor allowing unobstructed exit of lobsters from trap; 2. panel to be fastened to trap by either wood lath; cotton, hemp, sisal, or jute twine not greater than 3/16" in diameter; or non-stainless, uncoated ferrous metal not greater than 3/32" in diameter; 3. door of trap may serve as ghost panel if fastened to trap with material specified above; 4. escape vent may serve as ghost panel if incorporated into a panel constructed of, or attached to the trap with a material specified above, and upon breakdown of the degradable materials, will create an opening at least 3 3/4" square. 5. traps constructed entirely or partially of wood shall be considered to be in compliance if constructed of wood lath to the extent that deterioration of wooden component(s) will result in unobstructed opening at least 3 3/4" square.
---	---

MASSACHUSETTS DIVISION OF MARINE FISHERIES
RULES & REGULATIONS SUMMARY
(as of June 1, 2021)

Refer to Chapter 130 and 322 CMR for details.

AREA/SEASON CLOSURES:	LOCATION	DURATION	REGULATION
	Fish Weir Buffer Zone	Year-round	322 CMR 4.03
	Large Whale Seasonal Trap Gear Closure	Feb 1 – May 15	322 CMR 12.04
	Single Trap Area	Year-round	322 CMR 12.06
	Greater New Bedford Harbor north of a line from Ricketson’s Point (Dartmouth) to Wilbur Point (Fairhaven)	Year-round	322 CMR 6.29
	All waters under the jurisdiction of the Commonwealth	Sep. 16 – Jun. 14	G.L. c. 130 s. 38
	Upper Cape Cod Bay Whiting Area/Fixed Gear Free Zone	Sep. 1 – Sep. 15	322 CMR 8.06
	Harwich Reef Restricted Area	Year Round	322 CMR 8.09

PROHIBITED SPECIES:	Edible crabs from January 1 – April 30 [G.L. c. 130 s. 40] , egg-bearing lobsters [G.L. c. 130 s. 41A] , v-notched female lobsters [322 CMR 6.02] , Atlantic salmon [322 CMR 6.06] , river herring [322 CMR 6.17] , and windowpane flounder, wolffish and ocean pout [322 CMR 6.03] . Also prohibited from possessing any female lobster that is mutilated in a manner that could hide, obscure or obliterate a v-shaped notch [322 CMR 6.02] . The catch of finfish and conch must not exceed the catch of lobster by weight, else a regulated fish pot fishery permit is required [322 CMR 6.12] .
----------------------------	--

MINIMUM AND MAXIMUM SIZE LIMITS [322 CMR 6.02] :		
LCMA	MINIMUM SIZE	MAXIMUM SIZE
1	3 ¼”	5”
2	3 ¾”	5 ¼”
OCC	3 ¾”	N/A

V-NOTCH REGULATIONS [322 CMR 6.02] :		
LCMA	REQUIREMENT TO V-NOTCH FEMALE LOBSTER	RULES PERTAINING TO POSSESSION OF A V-NOTCHED FEMALE LOBSTER
1	Fishermen are required to carve v-shaped notch in any egg-bearing female lobster at least ¼” and not greater than a ½” in depth and tapering to sharp point in the flipper next to and to the right of the center flipper as viewed from the rear of the female lobster when underside is down.	“ZERO TOLERANCE” applies. Fishermen may not possess a female lobster with a “v-shaped notch” of any size with or without setal hairs on the flipper right of the center flipper.
2	Fishermen are required to carve a v-shaped notch in any legal sized egg-bearing female lobster at least ¼” and not greater than ½” in depth and tapering to a sharp point in the flipper next to and to the right of the center flipper as viewed from the rear of the female lobster when underside is down.	Fishermen may not possess any female lobster that bears a notch or indentation in the base of the flipper that is at least as deep as 1/8”, with or without setal hairs.

MASSACHUSETTS DIVISION OF MARINE FISHERIES
RULES & REGULATIONS SUMMARY
(as of June 1, 2021)

Refer to Chapter 130 and 322 CMR for details.

V-NOTCH REGULATIONS (cont)		
<u>LCMA</u>	<u>REQUIREMENT TO V-NOTCH FEMALE LOBSTER</u>	<u>RULES PERTAINING TO POSSESSION OF A V-NOTCHED FEMALE LOBSTER</u>
Outer Cape Cod	No requirement to v-notch.	Fishermen and dealers may not possess female lobster if it possesses a “v-shaped notch” defined as straight-sided triangular cut, without setal hairs, at least ¼” in depth and tapering to point.

MASSACHUSETTS DIVISION OF MARINE FISHERIES
RULES & REGULATIONS SUMMARY
(as of June 1, 2021)

Refer to Chapter 130 and 322 CMR for details.

FISHERY:		LOBSTERING commercially with SCUBA in state waters.			
PERMIT REQUIRED:				Resident	Non-Resident
	(1)	Coastal Lobster	\$310	\$570
PERMIT LIMIT:		<ul style="list-style-type: none">No new permits are being issued to lobster commercially in state or federal waters with traps [322 CMR 7.03 and 7.08]; existing permits are renewable and transferable [322 CMR 7.03].			
PERMIT RESTRICTIONS:		<ul style="list-style-type: none">Fishermen must declare which Lobster Conservation Management Area (LCMA) they intend to fish [322 CMR 7.03].Multiple LCMA endorsements are prohibited, except by persons with valid federal authorization for LCMA 3 who may additionally receive authorization for either LCMA 1, 2 or Outer Cape Cod. Those fishing in more than one area as designated on their permits shall observe the most restrictive of different regulations for the areas declared [322 CMR 7.03].Transfers of coastal permits are prohibited between areas except when transferring to an area under management of an effort control plan[322 CMR 7.03]Area-specific regulations, including actively fished criteria, govern the transfer of coastal permits [322 CMR 7.03]Night fishing for lobsters is prohibited [G.L. c. 130 s. 39].No unloading of lobster Feb 1 - April 30 from 8:00 PM through 6:00 AM [322 CMR 6.25]			
REPORTING REQUIREMENTS:		Trip level reporting [G.L. c. 130 s. 21] and 322 CMR 7.01] for permit holders who do not hold a federal permit and submit federal vessel trip reports.			
GEAR RESTRICTIONS:		<ul style="list-style-type: none">Scuba tank and floating marker must display permit numbers [322 CMR 4.11].Permit numbers shall be not less than 3 inches in height nor less than ½ inch in thickness or width of line [G.L. c. 130 s. 38A] and 322 CMR 4.11].Possession and setting of non-trap structures to attract lobsters is prohibited [322 CMR 6.02].			
AREA/SEASON CLOSURES:	LOCATION		DURATION	REGULATION	
	Fish Weir Buffer Zone		Year-round	322 CMR 4.03	
	Greater New Bedford Harbor north of a line from Ricketson’s Point (Dartmouth) to Wilbur Point (Fairhaven)		Year-round	322 CMR 6.29	
	Harwich Reef Restricted Area		Year Round	322 CMR 8.09	
PROHIBITED SPECIES:		Edible crabs from Jan 1 - April 30 [G.L. c. 130 s 40] , egg-bearing lobsters [G.L. c. 130 s. 41A] , v-notched female or mutilated v-notched female lobsters [322 CMR 6.02] .			
MINIMUM AND MAXIMUM SIZE LIMITS [322 CMR 6.02] :					
LCMA		MINIMUM SIZE		MAXIMUM SIZE	
1		3 ¼”		5”	
2		3 ⅜”		5 ¼”	
OCC		3 ⅜”		N/A	

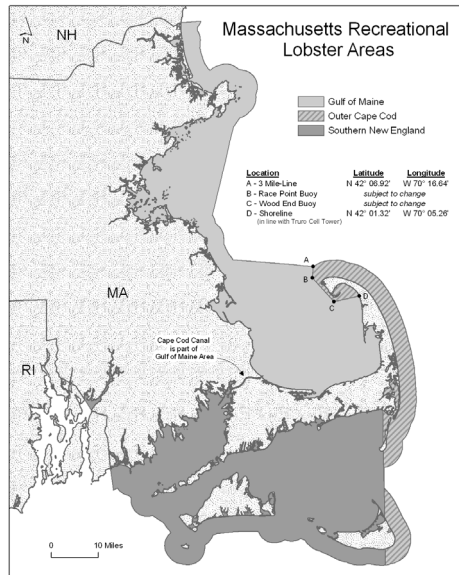
MASSACHUSETTS DIVISION OF MARINE FISHERIES
 RULES & REGULATIONS SUMMARY
 (as of June 1, 2021)

Refer to Chapter 130 and 322 CMR for details.

V-NOTCH REGULATIONS [322 CMR 6.02]		
<u>LCMA</u>	<u>REQUIREMENT TO V-NOTCH FEMALE LOBSTER</u>	<u>RULES PERTAINING TO POSSESSION OF A V-NOTCHED FEMALE LOBSTER</u>
1	Fishermen are required to carve a v-shaped notch in any egg-bearing female lobster at least ¼” and not greater than a ½” in depth and tapering to a sharp point in the flipper next to and to the right of the center flipper as viewed from the rear of the female lobster when underside is down.	“ZERO TOLERANCE” applies. Fishermen may not possess a female lobster with a “v-shaped notch” of any size with or without setal hairs on the flipper right of the center flipper.
2	Fishermen are required to carve a v-shaped notch in any legal sized egg-bearing female lobster at least ¼” and not greater than ½” in depth and tapering to a sharp point in the flipper next to and to the right of the center flipper as viewed from the rear of the female lobster when underside is down.	Fishermen may not possess any female lobster that bears a notch or indentation in the base of the flipper that is at least as deep as 1/8”, with or without setal hairs.
Outer Cape Cod	No requirement to v-notch.	Fishermen and dealers may not possess a female lobster if it possesses a “v-shaped notch” defined as a straight-sided triangular cut, without setal hairs, at least ¼” in depth and tapering to a point.

MASSACHUSETTS DIVISION OF MARINE FISHERIES
RULES & REGULATIONS SUMMARY
(as of June 1, 2021)

Refer to Chapter 130 and 322 CMR for details.

FISHERY:		LOBSTERING recreationally with TRAPS or SCUBA using the Non-Commercial Lobster Permit.										
PERMIT REQUIRED:				Resident	Non-Resident							
	(1)	Non-Commercial Lobster	\$55	\$75							
PERMIT LIMIT:	Permits issued to residents or non-residents under certain property ownership requirements [G.L. c. 130 s. 38]											
PERMIT RESTRICTIONS:	<ul style="list-style-type: none">• Sale of lobsters and crabs prohibited [G.L. c. 130 s. 38].• 15 lobster possession limit [322 CMR 6.02].• Fishing for lobsters at night prohibited [G.L. c. 130 s. 39]• No landing of lobster Feb 1 – Apr 30 from 8:00 PM through 6:00 AM [322 CMR 6.25]• Non-residents must own \$5,000 in MA real estate and temporarily reside in a MA coastal town to qualify for a permit [G.L. c. 130 s. 38].• Non-residents may only use the permit during Jun – Sep [G.L. c. 130 s. 38].• Seasonal closure from November 1 – May 15 [322 CMR 6.02]											
REPORTING REQUIREMENTS:	Annual Catch Report [G.L. c. 130 s. 38B].											
GEAR RESTRICTIONS:	<ul style="list-style-type: none">• The volume of any trap must not exceed 22,950 cubic inches [322 CMR 6.02]• No more than 10 traps may be set [G.L. c. 130 s. 38].• Escape vent required in trap's parlor section and degradable 'ghost' panels required. Min. size requirements based on specific area fished [322 CMR 6.02]:											
	<table><tr><th>Recreational Lobster Area</th><th>Escape Vent Minimum Size</th></tr><tr><td>Gulf of Maine</td><td>1-15/16" x 5-3/4" or 2 circular vets of at least 2-7/16 diameter</td></tr><tr><td>Outer Cape Cod</td><td>2" x 5-3/4" or 2 circular vets of at least 2 5/8" diameter</td></tr><tr><td>Southern New England</td><td>2" x 5-3/4" or 2 circular vets of at least 2 5/8" diameter</td></tr></table>	Recreational Lobster Area	Escape Vent Minimum Size	Gulf of Maine	1-15/16" x 5-3/4" or 2 circular vets of at least 2-7/16 diameter	Outer Cape Cod	2" x 5-3/4" or 2 circular vets of at least 2 5/8" diameter	Southern New England	2" x 5-3/4" or 2 circular vets of at least 2 5/8" diameter			
Recreational Lobster Area	Escape Vent Minimum Size											
Gulf of Maine	1-15/16" x 5-3/4" or 2 circular vets of at least 2-7/16 diameter											
Outer Cape Cod	2" x 5-3/4" or 2 circular vets of at least 2 5/8" diameter											
Southern New England	2" x 5-3/4" or 2 circular vets of at least 2 5/8" diameter											
	<ul style="list-style-type: none">• Trawl maximum length: 2,500 feet [322 CMR 4.13].• Vessel maximum size: 72 feet registered length [322 CMR 8.05].• Use of trawls is prohibited in waters of Gosnold [G.L. c. 130 s. 37].• Use of buoyed lobster cars is prohibited except in Inshore Restricted Waters [322 CMR 6.14].											

MASSACHUSETTS DIVISION OF MARINE FISHERIES
RULES & REGULATIONS SUMMARY
(as of June 1, 2021)

Refer to Chapter 130 and 322 CMR for details.

GEAR RESTRICTIONS (cont'd):	<ul style="list-style-type: none"> • Marking [322 CMR 4.13 and G.L. c. 130 s. 38]: <ul style="list-style-type: none"> ○ <u>All traps and lobster cars</u> must bear the fisherman's license number. All buoys must be marked with the letter "N" prior to the permit number and a dash with a single digit (0-9) indicating the sequential trap number. ○ <u>Fisherman's buoy colors</u> must be displayed on vessel. ○ <u>Buoy line</u> shall be marked with a four inch red mark midway on the buoy line. If the color of the rope is the same as or similar to red, a white mark may be substituted for the red mark. <u>Traps</u> require a single 7"x 7" or 5" x 11" buoy; stick is optional. ○ <u>Trawls</u> <ul style="list-style-type: none"> ▪ <u>East end</u> (South) - double buoy and one or more 3' sticks ▪ <u>West end</u> (North) - single buoy with 3' stick and flag. ▪ Note Boston Harbor exemption. • Degradable 'ghost' panels required [322 CMR 6.02]. • Fisherman's buoy color scheme must be displayed on vessel [G.L. c. 130 s. 38]. • Unlawful to abandon any trap gear or not haul any trap gear for periods exceeding 30-days [322 CMR 12.03]. <ol style="list-style-type: none"> 1. Unlawful for any person to fish trap gear fishing gear with: (1) lines floating at the water's surface; (2) positively buoyant groundline; and (3) buoy lines comprised of positively buoyant line except the bottom portion of the line which may be a section of floating line, not to exceed 1/3 overall length of the buoy line [322 CMR 12.06] • 600-lb. breakaway link on buoy line required • Buoy lines with a diameter greater than 5/16" [322 CMR 12.06]. • Trawls of 2 and 3 traps may only be buoyed on one end [322 CMR 12.06] • Single pots may not be set, fished or abandoned in state-waters north of Cape Cod that are seaward of 3 miles from shore, except for those waters in southern Cape Cod Bay that are shoreward of Loran C Line 9960-X-25360 [322 CMR 12.06]. • Scuba tank and floating marker must display permit numbers. Permit numbers shall be not less than 3 inches in height nor less than ½ inch in thickness or width of line [G.L. c. 130 s. 38A and 322 CMR 4.11] • Possession and setting of non-trap structures to attract lobsters is prohibited [322 CMR 6.02].
------------------------------------	---

AREA/SEASON CLOSURES:	LOCATION	DURATION	REGULATION
	Seasonal Closure to Protect Right Whales	Nov 1 – May 15	322 CMR 6.02
	Fish Weir Buffer Zone	Year-round	322 CMR 4.03
	Greater New Bedford Harbor north of a line from Ricketson's Point (Dartmouth) to Wilbur Point (Fairhaven)	Year-round	322 CMR 6.29
	Harwich Reef Restricted Area	Year-round	322 CMR 8.09
	Upper Cape Cod Bay Whiting Area/Fixed Gear Free Zone	Year-Round	322 CMR 8.06

MASSACHUSETTS DIVISION OF MARINE FISHERIES
 RULES & REGULATIONS SUMMARY
 (as of June 1, 2021)

Refer to Chapter 130 and 322 CMR for details.

MINIMUM AND MAXIMUM SIZE LIMITS [322 CMR 6.02]:		
<u>RECREATIONAL LOBSTER AREA</u>	<u>MINIMUM SIZE</u>	<u>MAXIMUM SIZE</u>
Gulf of Maine	3 ¼"	5"
Outer Cape Cod	3 ¾"	
Southern New England	3 ¾"	5 ¼"

V-NOTCH REGULATIONS	Non-commercial fishermen may not possess any female lobster that bears a v-notch or indentation that is at least 1/8 inch in depth, with or without setal hairs. Non-commercial fishermen are not required to v-notch female lobsters [322 CMR 6.02] .
----------------------------	--

PROHIBITED SPECIES:	Edible crabs from Jan 1 - April 30 [G.L. c. 130 s. 40] , egg-bearing lobsters [G.L. c. 130 s. 41A] , v-notched female or mutilated v-notched female lobsters [322 CMR 6.02] ; blue crabs taken by cylindrical or six-sided traps [322 CMR 6.19]
----------------------------	---

MASSACHUSETTS DIVISION OF MARINE FISHERIES
RULES & REGULATIONS SUMMARY
(as of June 1, 2021)

Refer to Chapter 130 and 322 CMR for details.

FISHERY:	POTTING for SEA BASS				
PERMIT REQUIRED:				<u>Resident</u>	<u>Non-Resident</u>
	(1)	Commercial Fishermen			
		Boat 99+ feet Coastal or Offshore Lobster	\$260		\$520
		Boat 60 - 99 feet	\$195		\$390
		Boat 59 feet or less	\$130		\$260
	(2)	Regulated black sea bass fish pot endorsement	\$30		\$60
	If certain species are being taken or landed				
	(3)	Species-specific regulated fishery endorsement.	\$30		\$60
PERMIT LIMIT:	Limited entry and permits are transferable [322 CMR 7.06] .				
PERMIT RESTRICTIONS:	<ul style="list-style-type: none"> Black sea bass pot fishery is owner-operator [322 CMR 7.06]. Fishermen who possess Coastal Lobster permit may take finfish in their traps as long as the weight of fish and conch does not exceed the weight of lobster [322 CMR 6.12] and a black sea bass endorsement is held [322 CMR 7.01]. 				
REPORTING REQUIREMENTS:	Trip level reporting [G.L. c. 130 s. 21] and 322 CMR 7.01 for permit holders who do not hold a federal permit and submit federal vessel trip reports.				
GEAR RESTRICTIONS:	<ul style="list-style-type: none"> Gear may not be set, hauled or tended from ½ hour after sunset to ½ hour before sunrise [322 CMR 6.12]. Year specific pot tag with permit number must be attached to pot's cross member [322 CMR 6.31]. Pot Limit of 200 black sea bass pots or combined sea bass and scup pots [322 CMR 6.12]. No more than one black sea bass pot limit may be fished on a vessel regardless of the number of permit holders on board or the number of permits held by an individual [322 CMR 6.12]. Two unobstructed escape vents or openings in the parlor section measuring at least 2 1/2" in diameter, two inches square, or 1 3/8" by 5 3/4" required [322 CMR 6.12]. Unobstructed ghost panel rigged with biodegradable material and measuring at least 3" by 6" required in parlor section [322 CMR 6.12]. Use of floating line at the surface prohibited [322 CMR 12.06]. Positively buoyant groundline prohibited [322 CMR 12.06]. Buoy lines comprised of positively buoyant line except the bottom portion of the line which may be a section of floating line, not to exceed 1/3 overall length of the buoy line [322 CMR 12.06] All fish traps require ghost panel [322 CMR 6.12]. Trawl maximum length: 2,500 feet [322 CMR 4.13]. Vessel maximum size: 72 feet registered length [322 CMR 8.03]. May not bait with horseshoe crabs [322 CMR 6.12]. 				

MASSACHUSETTS DIVISION OF MARINE FISHERIES
RULES & REGULATIONS SUMMARY
(as of June 1, 2021)

Refer to Chapter 130 and 322 CMR for details.

GEAR RESTRICTIONS (cont):	<ul style="list-style-type: none"> Pot and Buoy Marking [322 CMR 4.13, 6.12 and G.L.c.130 s. 38A]: <ul style="list-style-type: none"> <u>All pots, buoys and holding cars</u> must bear the fisherman's license number. <u>Fisherman's buoy colors</u> must be displayed on buoy and vessel. <u>Pots</u> require a single 7"x 7" or 5" x 11" buoy; stick is optional. <u>Trawls</u>: <ul style="list-style-type: none"> <u>East end</u> (South) - double buoy and one or more 3' sticks. <u>West end</u> (North) - single buoy with 3' stick and flag. Note Boston Harbor exemption. Buoy Line Marking [322 CMR 4.13] <ul style="list-style-type: none"> <u>Trawl Marking</u> <ul style="list-style-type: none"> <u>LCMA 1, LCMA 2 & OCC LCMA</u> must be marked with a 12" red mark at the top, middle and bottom of the buoy line <u>LCMA 3</u> must be marked with 12" black mark at the top, middle and bottom of the buoy line. <u>Single Pot Marking</u> <ul style="list-style-type: none"> <u>LCMA 1</u> must be marked with a 12" mark at the top, middle and bottom of the buoy line with each mark composed of at least 6" of red and 6" of white. <u>LCMA 2</u> must be marked with a 12" mark at the top, middle and bottom of the buoy line with each mark composed of at least 6" of red and 6" of black. <u>OCC LCMA</u> must be marked with a 12" mark at the top, middle and bottom of the buoy line with each mark composed of at least 6" of red and 6" of yellow. Single pots may not be set, fished or abandoned in state-waters north of Cape Cod that are seaward of 3 miles from shore, except for those waters in southern Cape Cod Bay that are shoreward of Loran C Line 9960-X-25360 [322 CMR 12.06]. Trawls of 2 and 3 traps may only be buoyed on one end [322 CMR 12.06] Maximum buoy line diameter is 3/8" [322 CMR 12.06]. Buoy lines are to have maximum breaking strength of 1,700 pounds [322 CMR 12.06].
----------------------------------	--

AREA/SEASON CLOSURES:	LOCATION	DURATION	REGULATION
	Fish Weir Buffer Zone	Year-round	322 CMR 4.03
	Large Whale Seasonal Trap/Pot Gear Closure Area	Feb 1 – May 15	322 CMR 12.04
	Single Pot Trap Area	Year Round	322 CMR 12.06
	Black Sea Bass Pot Haul-Out	3-days after fishery closes until 3-days before fishery opens	322 CMR 6.12
	Harwich Reef Restricted Area	Year-Round	322 CMR 8.09

PROHIBITED SPECIES:	<p>Edible crabs from January 1- April 30 [G.L. c. 130 s. 40], lobster (a commercial lobster permit is needed to take lobster) [322 CMR 7.01], Atlantic salmon [322 CMR 6.06], ocean pout, windowpane flounder and wolffish [322 CMR 6.03], certain shark species including basking sharks, dusky sharks, sand tiger sharks, and white sharks [322 CMR 6.37] and river herring [322 CMR 6.17]. Scup or whelks without a scup pot or conch pot permit endorsement and any other finfish species, including tautog, without a letter of authorization from the Director. [322 CMR 6.12].</p>
----------------------------	---

MASSACHUSETTS DIVISION OF MARINE FISHERIES
RULES & REGULATIONS SUMMARY
(as of June 1, 2021)

Refer to Chapter 130 and 322 CMR for details.

FISHERY:	POTTING for SCUP				
PERMIT REQUIRED:				<u>Resident</u>	<u>Non-Resident</u>
	(1)	Commercial Fishermen			
		Boat 99+ feet Coastal or Offshore Lobster	\$260	\$520
		Boat 60 - 99 feet	\$195	\$390
		Boat 59 feet or less	\$130	\$260
	(2)	Regulated scup fish pot endorsements	\$30	\$60
	If certain species are being taken or landed:				
	(3)	Species-specific regulated fishery endorsement	\$30	\$60
PERMIT LIMIT:	Limited entry permit and permits are transferable [322 CMR 7.06] .				
PERMIT RESTRICTIONS:	<ul style="list-style-type: none"> Scup pot fishery is owner-operator [322 CMR 7.06]. Fishermen who possess Coastal Lobster permit may take scup in their traps as long as the weight of fish and conch does not exceed the weight of lobster [322 CMR 6.12] and a scup endorsement is held [322 CMR 7.01]. 				
REPORTING REQUIREMENTS:	Trip level reporting [G.L. c. 130 s. 21] and 322 CMR 7.01 for permit holders who do not hold a federal permit and submit federal vessel trip reports.				
GEAR RESTRICTIONS:	<ul style="list-style-type: none"> Gear may not be set, hauled or tended from ½ hour after sunset to ½ hour before sunrise [322 CMR 6.12]. Year specific pot tag with permit number must be attached to pot's cross member. Pot Limit of 50 scup pots [322 CMR 6.12]. If a black sea bass pot permit is held than no more than 200 combined scup and black sea bass pots [322 CMR 6.12]. No more than one scup pot limit may be fished on a vessel regardless of the number of permit holders on board or the number of permits held by an individual [322 CMR 6.12]. Two unobstructed escape vents or openings in the parlor section measuring at least 3 1/10" in diameter or 2 1/4" square is required [322 CMR 6.12]. Unobstructed ghost panel rigged with biodegradable material required in parlor section [322 CMR 6.12]. Use of floating line at the surface is prohibited [322 CMR 12.03]. Positively buoyant groundline is prohibited [322 CMR 12.03]. Buoy lines comprised of positively buoyant line except the bottom portion of the line which may be a section of floating line, not to exceed 1/3 overall length of the buoy line [322 CMR 12.03]. All fish traps require ghost panel [322 CMR 6.12]. Trawl maximum length: 2,500 feet [322 CMR 4.13]. Vessel maximum size: 72 feet registered length [322 CMR 8.03]. May not bait with horseshoe crab [322 CMR 6.12]. 				

MASSACHUSETTS DIVISION OF MARINE FISHERIES
RULES & REGULATIONS SUMMARY
(as of June 1, 2021)

Refer to Chapter 130 and 322 CMR for details.

GEAR RESTRICTIONS (cont):	<ul style="list-style-type: none"> • Pot and Buoy Marking [322 CMR 4.13, 322 CMR 6.12 and G.L.c.130 s. 38A]: <ul style="list-style-type: none"> ○ <u>All pots, buoys and holding cars</u> must bear the fisherman's license number. ○ <u>Fisherman's buoy colors</u> must be displayed on buoy and vessel. ○ <u>Pots</u> require a single 7"x 7" or 5" x 11" buoy; stick is optional. ○ <u>Trawls</u>: <ul style="list-style-type: none"> ▪ <u>East end</u> (South) - double buoy and one or more 3' sticks. ▪ <u>West end</u> (North) - single buoy with 3' stick and flag. ▪ Note Boston Harbor exemption. • Buoy Line Marking [322 CMR 4.13] <ul style="list-style-type: none"> ○ <u>Trawl Marking</u> <ul style="list-style-type: none"> ▪ <u>LCMA 1, LCMA 2 & OCC LCMA</u> must be marked with a 12" red mark at the top, middle and bottom of the buoy line ▪ <u>LCMA 3</u> must be marked with 12" black mark at the top, middle and bottom of the buoy line. ○ <u>Single Pot Marking</u> <ul style="list-style-type: none"> ▪ <u>LCMA 1</u> must be marked with a 12" mark at the top, middle and bottom of the buoy line with each mark composed of at least 6" of red and 6" of white. ▪ <u>LCMA 2</u> must be marked with a 12" mark at the top, middle and bottom of the buoy line with each mark composed of at least 6" of red and 6" of black. ▪ <u>OCC LCMA</u> must be marked with a 12" mark at the top, middle and bottom of the buoy line with each mark composed of at least 6" of red and 6" of yellow. • Single pots may not be set, fished or abandoned in state-waters north of Cape Cod that are seaward of 3 miles from shore, except for those waters in southern Cape Cod Bay that are shoreward of Loran C Line 9960-X-25360 [322 CMR 12.06]. • Trawls of 2 and 3 traps may only be buoyed on one end [322 CMR 12.06]. • Maximum buoy line diameter is 3/8" [322 CMR 12.06]. • Buoy lines are to have maximum breaking strength of 1,700 pounds [322 CMR 12.06].
----------------------------------	---

AREA/SEASON CLOSURES:	LOCATION	DURATION	REGULATION
	Fish Weir Buffer Zone	Year-round	322 CMR 4.03
	Large Whale Seasonal Trap/Pot Gear Closure Area	Feb 1 – May 15	322 CMR 12.04
	Single Pot Area	Year-Round	322 CMR 12.06
	Scup Pot Haul-Out	3-days after fishery closes through April 27	322 CMR 6.12
	Harwich Reef Restricted Area	Year-round	322 CMR 8.09

PROHIBITED SPECIES:	<p>Edible crabs from Jan 1 - April 30 [G.L. c. 130 s. 40], striped bass [322 CMR 6.07 and G.L. c. 130 s. 100B] and shad [322 CMR 4.12], smelt [G.L. c. 130 s. 35], tuna [322 CMR 6.04], sturgeon [322 CMR 6.16], Atlantic salmon [322 CMR 6.06], river herring [322 CMR 6.17], ocean pout, windowpane flounder and wolffish [322 CMR 6.03], certain shark species including basking sharks, dusky sharks, sand tiger sharks, and white sharks [322 CMR 6.37]. Black sea bass without a black sea bass pot permit endorsement and any other finfish species, including tautog, without a letter of authorization from the Director [322 CMR 6.12].</p>
----------------------------	---

MASSACHUSETTS DIVISION OF MARINE FISHERIES
RULES & REGULATIONS SUMMARY
(as of June 1, 2021)

Refer to Chapter 130 and 322 CMR for details.

FISHERY:	POTTING for WHELKS				
PERMIT REQUIRED:				<u>Resident</u>	<u>Non-Resident</u>
	(1)	Commercial Fishermen			
		Boat 99+ feet Coastal or Offshore Lobster	\$260	\$520
		Boat 60 - 99 feet	\$195	\$390
		Boat 59 feet or less	\$130	\$260
			or		
		Shellfish	\$40	\$80
	(2)	Regulated conch pot endorsements	\$30	\$60
	If certain species are being taken or landed:				
	(3)	Species-specific regulated fishery endorsement	\$30	\$60
PERMIT LIMIT:	Limited entry permit and permits are transferable [322 CMR 7.06] .				
PERMIT RESTRICTIONS:	<ul style="list-style-type: none"> • All conchs must be landed whole in the shell [322 CMR 6.21] • Conch pot fishery permits are owner-operator [322 CMR 7.06]. • Fishermen who possess Coastal Lobster permit may take finfish in their traps as long as the weight of fish and conch does not exceed the weight of lobster [322 CMR 6.12] and a shellfish permit endorsement is held [322 CMR 7.01]. • All whelks must be tagged with harvester name and permit number, harvest time and date, shellfish type and quantity, and harvest state and growing area information [322 CMR 16.03] 				
REPORTING REQUIREMENTS:	Trip level reporting [G.L. c. 130 s. 21] and [322 CMR 7.01] for permit holders who do not hold a federal permit and submit federal vessel trip reports.				
GEAR RESTRICTIONS:	<ul style="list-style-type: none"> • Gear may not be set, hauled or tended from ½ hour after sunset to ½ hour before sunrise [322 CMR 6.12]. • Year specific pot tag with permit number must be attached to pot's cross member. • Pot Limit of 200 conch pots [322 CMR 6.12]. • Conch pots must not have side heads or horizontal laths [322 CMR 6.12] • No more than one conch pot limit may be fished on a vessel regardless of the number of permit holders on board or the number of permits held by an individual [322 CMR 6.12]. • Use of floating line at the surface prohibited [322 CMR 12.03]. • Positively buoyant groundline prohibited [322 CMR 12.03]. • Buoy lines comprised of positively buoyant line except the bottom portion of the line which may be a section of floating line, not to exceed 1/3 overall length of the buoy line [322 CMR 12.03] • Trawl maximum length: 2,500 feet [322 CMR 4.13]. • Vessel maximum size: 72 feet registered length [322 CMR 8.03]. 				

MASSACHUSETTS DIVISION OF MARINE FISHERIES
RULES & REGULATIONS SUMMARY
(as of June 1, 2021)

Refer to Chapter 130 and 322 CMR for details.

GEAR RESTRICTIONS (cont):	<ul style="list-style-type: none"> • Pot and Buoy Marking [322 CMR 4.13, 322 CMR 6.12 and G.L.c.130 s. 38A]: <ul style="list-style-type: none"> ○ <u>All pots, buoys and holding cars</u> must bear the fisherman's license number. ○ <u>Fisherman's buoy colors</u> must be displayed on buoy and vessel. ○ <u>Pots</u> require a single 7"x 7" or 5" x 11" buoy; stick is optional. ○ <u>Trawls</u>: <ul style="list-style-type: none"> ▪ <u>East end</u> (South) - double buoy and one or more 3' sticks. ▪ <u>West end</u> (North) - single buoy with 3' stick and flag. ▪ Note Boston Harbor exemption. • Buoy Line Marking [322 CMR 4.13] <ul style="list-style-type: none"> ○ <u>Trawl Marking</u> <ul style="list-style-type: none"> ▪ <u>LCMA 1, LCMA 2 & OCC LCMA</u> must be marked with a 12" red mark at the top, middle and bottom of the buoy line ▪ <u>LCMA 3</u> must be marked with 12" black mark at the top, middle and bottom of the buoy line. ○ <u>Single Pot Marking</u> <ul style="list-style-type: none"> ▪ <u>LCMA 1</u> must be marked with a 12" mark at the top, middle and bottom of the buoy line with each mark composed of at least 6" of red and 6" of white. ▪ <u>LCMA 2</u> must be marked with a 12" mark at the top, middle and bottom of the buoy line with each mark composed of at least 6" of red and 6" of black. ▪ <u>OCC LCMA</u> must be marked with a 12" mark at the top, middle and bottom of the buoy line with each mark composed of at least 6" of red and 6" of yellow. • Single pots may not be set, fished or abandoned in state-waters north of Cape Cod that are seaward of 3 miles from shore, except for those waters in southern Cape Cod Bay that are shoreward of Loran C Line 9960-X-25360 [322 CMR 12.06]. • Trawls of 2 and 3 traps may only be buoyed on one end [322 CMR 12.06]. • Maximum buoy line diameter is 3/8" [322 CMR 12.06]. • Buoy lines are to have maximum breaking strength of 1,700 pounds [322 CMR 12.06].
----------------------------------	---

AREA/SEASON CLOSURES:	LOCATION	DURATION	REGULATION
	Fish Weir Buffer Zone	Year-Round	322 CMR 4.03
	Large Whale Seasonal Trap/Pot Gear Closure Area	Feb 1 – May 15	322 CMR 12.04
	Single Pot Area	Year-Round	322 CMR 12.06
	Conch Pot Haul Out	December 15 – April 14	322 CMR 6.12
	Harwich Reef Restricted Area	Year-Round	322 CMR 8.09

MASSACHUSETTS DIVISION OF MARINE FISHERIES
RULES & REGULATIONS SUMMARY
(as of June 1, 2021)

Refer to Chapter 130 and 322 CMR for details.

MINIMUM GAUGE WIDTH INCREASE SCHEDULE 2021 – 2029 [322 CMR 6.21]	
<u>YEAR</u>	<u>MINIMUM GAUGE WIDTH</u>
2021 - 2022	3 1/8"
2023 - 2024	3 1/4"
2025 – 2026	3 3/8"
2027 – 2028	3 1/2"
2029 and beyond	3 5/8"

PROHIBITED SPECIES:	Edible crabs from Jan 1 - April 30 [G.L. c. 130 s. 40], striped bass [322 CMR 6.07 and G.L. c. 130 s. 100B], shad and river herring [322 CMR 6.17], smelt [G.L. c. 130 s. 35], Atlantic bluefin tuna [322 CMR 6.04], sturgeon [322 CMR 6.16], Atlantic salmon [322 CMR 6.06], , ocean pout, windowpane flounder and wolffish [322 CMR 6.03], certain shark species including basking sharks, dusky sharks, sand tiger sharks, and white sharks [322 CMR 6.37]. Black sea bass without a black sea bass pot permit endorsement and any other finfish species, including tautog, without a letter of authorization from the Director [322 CMR 6.12].
----------------------------	--

MASSACHUSETTS DIVISION OF MARINE FISHERIES
RULES & REGULATIONS SUMMARY
(as of June 1, 2021)

Refer to Chapter 130 and 322 CMR for details.

FISHERY:	FISH WEIRS (also known as Fish Traps or Pound Nets)					
PERMIT REQUIRED:				<u>Resident</u>		<u>Non-Resident</u>
	(1)	Commercial Fishermen				
		Boat 99+ feet Coastal or Offshore Lobster		\$260		\$520
		Boat 60 - 99 feet		\$195		\$390
		Boat 59 feet or less		\$130		\$260
	If certain species are being taken or landed:					
	(2)	Species-specific regulated fishery endorsement, including groundfish (if vessel has no federal groundfish or monkfish permit)		\$30		\$60
PERMIT LIMIT:	None					
PERMIT RESTRICTIONS:	In the following order, one must have approval from: 1) Local selectmen regarding the construction and location. 2) Division of Marine Fisheries [G.L. c. 130 s. 29, 322 CMR 4.03 and 7.01] . 3) Division of Waterways.					
REPORTING REQUIREMENTS:	Trip level reporting [G.L. c. 130 s. 21 and 322 CMR 7.01] for permit holders who do not hold a federal permit and submit federal vessel trip reports.					
GEAR RESTRICTIONS:	<ul style="list-style-type: none"> Inshore and offshore ends must be marked with DMF permit numbers signs or flags; numbers must be at least 6" in height [G.L. c. 130 s. 30]. Division of Waterways regulates the marking of traps for navigational criteria. To designate the "fish trap buffer zone", weir heads and leader must be marked with 12" orange inflated balls attached to anchor lines and marked with DMF assigned number [322 CMR 4.03]. 					
PROHIBITED SPECIES:	Lobster [G.L. c. 130 s. 37] ; Striped bass [322 CMR 6.07 and G.L. c. 130 s. 100B] , shad and river herring [322 CMR 6.17] , smelt [G.L. c. 130 s. 35] , sturgeon [322 CMR 6.16] , Atlantic salmon [322 CMR 6.06] , ocean pout, windowpane flounder and wolfish [322 CMR 6.03] and certain shark species including basking sharks, dusky sharks, sand tiger sharks, and white sharks [322 CMR 6.37] .					

MASSACHUSETTS DIVISION OF MARINE FISHERIES
RULES & REGULATIONS SUMMARY
(as of June 1, 2021)

Refer to Chapter 130 and 322 CMR for details.

FISHERY:	SINK GILLNETTING (Fishing on or near bottom)				
PERMIT REQUIRED:				<u>Resident</u>	<u>Non-Resident</u>
	(1)	Commercial Fishermen			
		Boat 99+ feet Coastal or Offshore Lobster	\$260	\$520
		Boat 60 - 99 feet	\$195	\$390
		Boat 59 feet or less	\$130	\$260
	(2)	Regulated sink gillnet endorsement	\$30	\$60
	If certain species are being taken or landed:				
	(3)	Species-specific regulated fishery endorsement	\$30	\$60
PERMIT LIMIT:	Regulated fishery gillnet endorsement limited to renewals only (limited access) [322 CMR 7.01] .				
REPORTING REQUIREMENTS:	Trip level reporting [G.L. c. 130 s. 21] and [322 CMR 7.01] for permit holders who do not hold a federal permit and submit federal vessel trip reports.				
GEAR RESTRICTIONS:	<ul style="list-style-type: none"> • Mesh minimum size: 6 ½" (stretched) [322 CMR 4.04]. • Net maximum length: 2,400 feet [322 CMR 4.04]. • Knot-less weak link at the buoy with a breaking strength of 600 lbs. [322 CMR 12.06]. • Weak links with a breaking strength of up to 1,100 lbs. must be installed in the float rope between net panels [322 CMR 12.06]. • Anchoring system must have holding power of at least 22 pound Danforth anchor [322 CMR 12.06]. • Marking [322 CMR 4.04] <ul style="list-style-type: none"> ○ <u>East end</u> – high flyer. ○ <u>West end</u> – high flyer and flag. ○ <u>Buoy</u> - permanently and visibly marked or branded with the permit number of the owner. ○ <u>Buoy line</u> – 12" green mark in middle of buoy line. • Vessel maximum size: 72 feet registered length [322 CMR 8.03]. • Must haul nets at least every 30 days [322 CMR 12.03]. • Prohibition on positively buoyant groundline and buoy lines [322 CMR 12.03] • "Pingers" are required in certain times and areas. Please consult NOAA (978-281-9300) or see federal regulations at 50 CFR 229.33 to determine when and where gillnet pinger regulations apply. 				
AREA/SEASON CLOSURES:	<u>LOCATION</u>		<u>DURATION</u>	<u>REGULATION</u>	
	Inshore Restricted Waters		Year-Round	322 CMR 4.02	
	Fish Weir Buffer Zone		Year-round	322 CMR 4.03	
	Right Whale Gillnet Closure		Jan. 1 – May 15	322 CMR 12.04	

MASSACHUSETTS DIVISION OF MARINE FISHERIES
RULES & REGULATIONS SUMMARY
(as of June 1, 2021)

Refer to Chapter 130 and 322 CMR for details.

AREA/SEASON CLOSURES cont'd):	LOCATION	DURATION	REGULATION
	North of Cape Cod inside spawning closure line from P'town to N.H.	Feb. 1 - May 31	322 CMR 8.04
	Massachusetts Bay Closure	See Federal Regulations	See Federal Regulations
	South of Cape Cod Harbor Porpoise Closure	See Federal Regulations	See Federal Regulations
	South of Cape Cod including Nantucket Sound and Vineyard Sound	Apr. 1 – Nov. 15	322 CMR 4.04
	Groundfish Closure I: Plymouth to Marblehead (conditional)	April 1 – April 30	322 CMR 8.05
	Groundfish Closure II: Boston to NH	May 1 – May 31	322 CMR 8.05
	Groundfish Closure III East of Cape Cod	May 1 – May 31	322 CMR 8.05
	Groundfish Closure IV: Marblehead to NH	June 1 – June 30	322 CMR 8.05
	Groundfish Closure V: Plymouth to Marblehead	October 1 – January 31	322 CMR 8.05
	Mass. Bay adjacent to Boston Harbor	May 15 – Nov. 1	322 CMR 4.04
	Winter Cod Conservation Zone	Nov. 15 – Jan. 31	322 CMR 8.07
	Spring Cod Conservation Zone	April 16 – July 21	322 CMR 8.07
	Harwich Reef Restricted Area	Year-Round	322 CMR 8.09
	PROHIBITED SPECIES: Lobster [G.L. c. 130 s. 37] , striped bass [322 CMR 6.07] and [G.L. c. 130 s. 100B] , shad and river herring [322 CMR 6.17] , smelt [G.L. c. 130 s. 35] , sturgeon [322 CMR 6.16] , Atlantic salmon [322 CMR 6.06] , ocean pout, windowpane flounder and wolffish [322 CMR 6.03] and certain shark species including basking sharks, dusky sharks, sand tiger sharks, and white sharks [322 CMR 6.37] .		

MASSACHUSETTS DIVISION OF MARINE FISHERIES
RULES & REGULATIONS SUMMARY
(as of June 1, 2021)

Refer to Chapter 130 and 322 CMR for details.

FISHERY:	SURFACE GILLNETTING (Fishing on or near surface)				
PERMIT REQUIRED:				<u>Resident</u>	<u>Non-Resident</u>
	(1)	Commercial Fishermen			
		Boat 99+ feet Coastal or Offshore Lobster	\$260	\$520
		Boat 60 - 99 feet	\$195	\$390
		Boat 59 feet or less	\$130	\$260
	(2)	Regulated surface gillnet endorsement (no permit required for use of surface gillnet less than 250 square feet)	\$30	\$60
	If certain species are being taken or landed:				
	(3)	Species-specific regulated fishery endorsement	\$30	\$60
REPORTING REQUIREMENTS:	Trip level reporting [G.L. c. 130 s. 21 and 322 CMR 7.01] for permit holders who do not hold a federal permit and submit federal vessel trip reports.				
GEAR RESTRICTIONS:	<ul style="list-style-type: none"> • Mesh minimum size: 1 7/8" [322 CMR 4.14]. • Mesh maximum size: 3 3/4" [322 CMR 4.14]. • Unlawful to fish more than 300 linear feet of surface gillnets at any one time [322 CMR 4.14]. • Fishermen setting or fishing surface gillnets shall remain within 200 feet of the net at all times [322 CMR 4.14]. • Surface gillnets must have a headrope sufficiently buoyant to float at the surface. If any portion of a gillnet when fished is exposed at the water's surface then the net shall be considered a surface gillnet [322 CMR 4.14]. • Knot-less weak link at the buoy with a breaking strength of 600 lbs. [322 CMR 12.06]. • Marking [322 CMR 4.13 and 4.14] <ul style="list-style-type: none"> ○ Buoy: permanently and visibly marked or branded with the permit number of the owner and reflective tape. Bullet-shaped buoys with a size of 9 x 16 inches and clearly marked with the letters SGN and the 6-digit permit number of the holder shall be attached to net ends. ○ Headrope: marked at least once every 50 feet with the permit number of the owner. Holders may burn or carve their number into floats attached to the headrope and shall measure at least ½ inch in height; alternatively if permit holders opt to mark the net with synthetic durable material, then the numbers shall be clearly visible and measure at least ¼" in height. • Vessel maximum size: 72 feet registered length [322 CMR 8.03]. <p>"Pingers" may be required in certain times and areas. Please consult NOAA (978-281-9300) or see federal regulations at 50 CFR 229 to determine when and where gillnet pinger regulations apply.</p>				
AREA/SEASON CLOSURES:	LOCATION		DURATION	REGULATION	
	Inshore Restricted Waters		Year-Round	322 CMR 4.02	
	Fish Weir Buffer Zone		Year-Round	322 CMR 4.03	

MASSACHUSETTS DIVISION OF MARINE FISHERIES
RULES & REGULATIONS SUMMARY
(as of June 1, 2021)

Refer to Chapter 130 and 322 CMR for details.

AREA/SEASON CLOSURES (cont'd):	Right Whale Gillnet Closure	Jan. 1 – May 15	322 CMR 12.04
	Southern New England Inshore Restricted Waters	Jan. 1 – May 15	322 CMR 4.14
	Buzzards Bay	Year Round	322 CMR 4.14
	Gulf of Maine Inshore Restricted Waters	Jan 1 – May 31	322 CMR 4.14
	Winter Flounder Spawning Area	Feb. 1 – May 31	322 CMR 8.04
	Winter Cod Conservation Zone	Nov. 15 – Jan. 31	322 CMR 8.07
	Spring Cod Conservation Zone	April 16 – July 21	322 CMR 8.07
	Harwich Reef Restricted Area	Year-Round	322 CMR 8.09
PROHIBITED SPECIES:	No other species except menhaden, sea herring, or mackerel may be retained from a surface gillnet [322 CMR 4.14] .		

MASSACHUSETTS DIVISION OF MARINE FISHERIES
RULES & REGULATIONS SUMMARY
(as of June 1, 2021)

Refer to Chapter 130 and 322 CMR for details.

FISHERY:	MOBILE GEAR: Mid-water Trawls, Otter and Beam Trawls, Bottom Pair Trawls, Scottish/Danish Seines and Pair Seines. <i>(With NO Regulated fishery endorsements for small mesh fishing, north shore mobile gear, or inshore net; see separate sheets.)</i>
-----------------	--

PERMIT REQUIRED:				<u>Resident</u>	<u>Non-Resident</u>
	(1)	Commercial Fishermen			
		Boat 99+ feet Coastal or Offshore Lobster		\$260	\$520
		Boat 60 - 99 feet		\$195	\$390
		Boat 59 feet or less		\$130	\$260
	(2)	Coastal Access Permit Endorsement		\$30	\$60
	If certain species are being taken or landed:				
	(3)	Species-specific regulated fishery endorsement, including groundfish (if vessel has no federal groundfish or monkfish permit).		\$30	\$60

PERMIT LIMIT:	<ul style="list-style-type: none"> Coastal Access Permits limited to those who held permit in 1994 [322 CMR 7.05]. Coastal Access Permits are transferable [322 CMR 7.06]
----------------------	---

REPORTING REQUIREMENTS:	Trip level reporting [G.L. c. 130 s. 21] and 322 CMR 7.01 for permit holders who do not hold a federal permit and submit federal vessel trip reports.
--------------------------------	---

GEAR RESTRICTIONS:	<ul style="list-style-type: none"> Mesh minimum size [322 CMR 4.06]. <ul style="list-style-type: none"> North & east of Cape Cod – 6½” in codend and 6” in body of nets. South of Cape Cod – 6½” in codend and 6” in body of net from January 1 – April 22 and June 10 – December 31. <ul style="list-style-type: none"> No mesh less than 6½” in codend and 6” in body of net shall be possessed by vessels during Jun. 10 – Apr. 22 or during Apr. 23 – Jun. 9 when more than a total of 100 lbs. of winter flounder, yellowtail flounder, summer flounder (fluke), or windowpane flounder, in any combination, is in possession. Vessel maximum size: 72 feet length overall [322 CMR 8.03]. Net rollers: 12” maximum diameter [322 CMR 4.06]. Net strengtheners: Alterations which obstruct or diminish meshes are prohibited. This includes the use of “twisted mesh” [322 CMR 4.06].
---------------------------	---

AREA/SEASON CLOSURES:	<u>LOCATION</u>	<u>DURATION</u>	<u>REGULATION</u>
	All state waters closed to night mobile gear fishing	Year-round	322 CMR 4.06
	Inshore Restricted Waters	Year-round	322 CMR 4.02

MASSACHUSETTS DIVISION OF MARINE FISHERIES
RULES & REGULATIONS SUMMARY
(as of June 1, 2021)

Refer to Chapter 130 and 322 CMR for details.

AREA/SEASON CLOSURES (cont'd):	LOCATION	DURATION	REGULATION
	Fish Weir Buffer Zone	Year-round	322 CMR 4.03
	Winter Flounder Spawning Area	Feb. 1 – May 31	322 CMR 8.04
	Area 1: North Shore (Broad Sound to NH)	Year-round	322 CMR 4.06
	Area 2: Outer Boston Harbor	Apr. 1 – December 31	322 CMR 4.06
	Area 3: South Shore (Plymouth to Hull)	May 1 – Oct. 31	322 CMR 4.06
	Area 4: Cape Cod Bay (Plymouth to Provincetown)	May 1 – Oct. 31	322 CMR 4.06
	Area 5: South and East of Cape Cod (Eastham to Mashpee)	May 1 – Oct. 31	322 CMR 4.06
	Area 6A: Mashpee to Falmouth ½ Mile	June 1 – Oct 31	322 CMR 4.06
	Area 6B: Mashpee to Falmouth ¼ Mile	Apr. 23 – May 31	322 CMR 4.06
	Area 7: Elizabeth Islands	May 1- May 31	322 CMR 4.06
	Area 8A: Nantucket North Shore	April 1 – April 30	322 CMR 4.06
	Area 8B: Nantucket Harbor	June 1 – September 15	322 CMR 4.06
	Groundfish Closure I: Plymouth to Marblehead (conditional)	April 1 – April 30	322 CMR 8.05
	Groundfish Closure II: Boston to New Hampshire	May 1- May 31	322 CMR 8.05
	Groundfish Closure III: East of Cape Cod	May 1- May 31	322 CMR 8.05
	Groundfish Closure IV: Marblehead to New Hampshire	Jun 1 – June 30	322 CMR 8.05

MASSACHUSETTS DIVISION OF MARINE FISHERIES
RULES & REGULATIONS SUMMARY
(as of June 1, 2021)

Refer to Chapter 130 and 322 CMR for details.

AREA/SEASON CLOSURES (cont'd):	LOCATION	DURATION	REGULATION
	Groundfish Closure IV: Plymouth to Marblehead	October 1 – January 31	322 CMR 8.05
	Groundfish Closure V: Plymouth to Marblehead	October 1 – January 31	322 CMR 8.05
	Winter Cod Conservation Zone	November 14 – January 31	322 CMR 8.07
	Spring Cod Conservation Zone	April 16 – July 21	322 CMR 8.07
	Harwich Reef	Year-Round	322 CMR 8.09
	PROHIBITED SPECIES: Striped bass [322 CMR 6.07] and G.L. c. 130 s. 100B], shad and river herring [322 CMR 6.17] , smelt [G.L. c. 130 s. 35] , sturgeon [322 CMR 6.16] , Atlantic salmon [322 CMR 6.06] , ocean pout, windowpane flounder and wolffish [322 CMR 6.03] and certain shark species including basking sharks, dusky sharks, sand tiger sharks, and white sharks [322 CMR 6.37] . Lobster [G.L. c. 130 s. 37] , except that mobile gear fishermen fishing in federal waters may land up to 100 lobsters per trip in Massachusetts [322 CMR 6.26] . Edible crabs if lobster permit is not held [G.L. c. 130 s. 37] and 322 CMR 6.19].		

MASSACHUSETTS DIVISION OF MARINE FISHERIES
RULES & REGULATIONS SUMMARY
(as of June 1, 2021)

Refer to Chapter 130 and 322 CMR for details.

FISHERY:	MOBILE GEAR: Otter and Beam Trawls, Bottom Pair Trawls, Scottish/Danish Seines and Pair Seines.
	<ul style="list-style-type: none"> With Regulated fishery endorsements for the following (permits required for each): <ul style="list-style-type: none"> (A) North Shore Mobile Gear: access to Areas 5 & 6 (B) Small-mesh fishing for whiting (C) Small-mesh fishing for squid

PERMIT REQUIRED:			<u>Resident</u>		<u>Non-Resident</u>
(1)	Commercial Fishermen				
	Boat 99+ feet Coastal or Offshore Lobster	\$260		\$520
	Boat 60 - 99 feet	\$195		\$390
	Boat 59 feet or less	\$130		\$260
(2)	Coastal Access Permit Endorsement	\$30		\$60
If certain species are being taken or landed (CAP can be endorsed for one of the regulated fisheries at no charge, each additional endorsement costs):					
(3)	Species-specific regulated fishery endorsement	\$30		\$60

(A)	North Shore Mobile Gear Endorsement
------------	--

PERMIT LIMIT:	<ul style="list-style-type: none"> Coastal Access Permits limited to those who held permit in 1994 [322 CMR 7.05]. Coastal Access Permits are transferable [322 CMR 7.06]
----------------------	---

REPORTING REQUIREMENTS:	Trip level reporting [G.L. c. 130 s. 21] and [322 CMR 7.01] for permit holders who do not hold a federal permit and submit federal vessel trip reports.
--------------------------------	---

GEAR RESTRICTIONS:	<ul style="list-style-type: none"> Mesh minimum size: 6" diamond or 6½" square unless use of smaller mesh is permitted. See (B) Small mesh permits. [322 CMR 4.06] Trawl sweep (footrope) maximum length: 80 feet [322 CMR 4.06]. No rollers: Only chain, wire or disk sweeps allowed [322 CMR 4.06]. Net strengtheners prohibited in large mesh fisheries. [322 CMR 4.06] Vessel maximum size: 72 feet length overall except as noted in [322 CMR 8.03]. Night fishing is prohibited in Commonwealth waters [322 CMR 4.06].
---------------------------	--

AREA/SEASON CLOSURES:	<u>LOCATION</u>	<u>DURATION</u>	<u>REGULATION</u>
	Fish Weirs	Year-round	322 CMR 4.03
	Inshore Restricted Waters	Year-round	322 CMR 4.02
When permitted to fish in Areas 1A & 1B the following closures apply:			
	Area 1A Gloucester/Rockport	April 1 – June 14 October 1 – January 31	322 CMR 4.06
	Area 1B Ipswich Bay	April 1 – December 14	322 CMR 4.06

MASSACHUSETTS DIVISION OF MARINE FISHERIES
RULES & REGULATIONS SUMMARY
(as of June 1, 2021)

Refer to Chapter 130 and 322 CMR for details.

PROHIBITED SPECIES:	Striped bass [322 CMR 6.07] and G.L. c. 130 s. 100B], shad and river herring [322 CMR 6.17] , smelt [G.L. c. 130 s. 35] , sturgeon [322 CMR 6.16] , Atlantic salmon [322 CMR 6.06] , ocean pout, windowpane flounder and wolfish [322 CMR 6.03] , and certain shark species including basking sharks, dusky sharks, sand tiger sharks, and white sharks [322 CMR 6.37] . Lobster [G.L. c. 130 s. 37] , except that mobile gear fishermen fishing in federal waters may land up to 100 lobsters per trip in Massachusetts [322 CMR 6.26] . Edible crabs if lobster permit is not held [G.L. c. 130 s. 37] and 322 CMR 6.19] .
----------------------------	---

(B)	Small-Mesh Endorsement for Whiting
------------	---

PERMIT LIMIT:	<ul style="list-style-type: none"> Coastal Access Permits limited to those who held permit in 1994 [322 CMR 7.05]. Coastal Access Permits are transferable [322 CMR 7.06]
----------------------	---

REPORTING REQUIREMENTS:	Trip level reporting [G.L. c. 130 s. 21] and 322 CMR 7.01] for permit holders who do not hold a federal permit and submit federal vessel trip reports.
--------------------------------	--

GEAR RESTRICTIONS:	<ul style="list-style-type: none"> Minimum net mesh size of 2 ½” diamond or square in cod end [322 CMR 4.06]. Headrope rigged with floats that measure at least 8” apart and floats are spaced no more than 4’ apart [322 CMR 4.06]. Bare wire ground gear does not measure more than ½” diameter along top leg, 5/8” diameter along bottom leg and ¾” diameter for ground cables [322 CMR 4.06]. Top leg of ground gear must be at least as long as bottom legs [322 CMR 4.06]. Total length of ground cables may not exceed 240’ (40 fathoms) from trawl door to wing ends [322 CMR 4.06]. Footrope is longer than headrope but not by more than 20’ and does not touch the ocean floor when towed [322 CMR 4.06]. Dropchains are at least 24” in length with a chain stock of 5/16” when a sweep is used or 3/8” when no sweep is used [322 CMR 4.06]. Only bare chain may be used on drop chains; additional weights are prohibited. Drop chains are to be hung from center of footrope and the corners at intervals of 8’ along the footrope [322 CMR 4.06]. The sweep is to be made of bare chain with 5/16” chain stock [322 CMR 4.06]. The sweep is to be the same length as the footrope [322 CMR 4.06]. The sweep is to be attached to the ends of the drop chain and the center of the sweep must be attached to the drop chain from the center of the footrope [322 CMR 4.06] The points where each drop chain is attached on the sweep and the footrope must be the same distance from the center of the chain attachments [322 CMR 4.06]. The ends of the sweeps must be attached to the drop chains at the center of the footrope [322 CMR 4.06]. Night fishing is prohibited in Commonwealth waters [322 CMR 4.06].
---------------------------	--

AREA/SEASON CLOSURES:	LOCATION	DURATION	REGULATION
	All state-waters except in exempted areas.	Year-round	322 CMR 4.06
	When permitted the following exemptions apply:		
	Upper Cape Cod Bay Whiting Area	September 1 – November 20.	322 CMR 4.06
	Cape Ann Whiting Area	September 1 – September 30	322 CMR 4.06

MASSACHUSETTS DIVISION OF MARINE FISHERIES
RULES & REGULATIONS SUMMARY
(as of June 1, 2021)

Refer to Chapter 130 and 322 CMR for details.

PROHIBITED SPECIES:	Striped bass [322 CMR 6.07] and G.L. c. 130 s. 100B], shad and river herring [322 CMR 6.17] , smelt [G.L. c. 130 s. 35] , sturgeon [322 CMR 6.16] , Atlantic salmon [322 CMR 6.06] , any regulated groundfish species [322 CMR 4.06] and certain shark species including basking sharks, dusky sharks, sand tiger sharks, and white sharks [322 CMR 6.37] . Lobster [G.L. c. 130 s. 37] , except that mobile gear fishermen fishing in federal waters may land up to 100 lobsters per trip in Massachusetts [322 CMR 6.26] . Edible crabs if lobster permit is not held [G.L. c. 130 s. 37] and [322 CMR 6.19] .
----------------------------	---

(C)	Small-Mesh Permits for Squid
------------	-------------------------------------

PERMIT LIMIT:	<ul style="list-style-type: none"> Coastal Access Permits limited to those who held permit in 1994 [322 CMR 7.05]. Coastal Access Permits are transferable [322 CMR 7.06]. CAP-Squid Endorsement valid during April 23 – June 9, unless extended by the Director [322 CMR 4.06].
----------------------	---

REPORTING REQUIREMENTS:	Trip level reporting [G.L. c. 130 s. 21] and [322 CMR 7.01] for permit holders who do not hold a federal permit and submit federal vessel trip reports.
--------------------------------	---

GEAR RESTRICTIONS	<ul style="list-style-type: none"> Minimum net mesh size of 1 7/8" in cod end [322 CMR 4.06]. Splitting straps and bullropes may be used if they do not obstruct the top o the trawl net [322 CMR 4.06]. Net strengtheners may be used if the mesh opening is at least 5" diamond or squared [322 CMR 4.06]. A liner may be used along the aftermost portion of the net, provided it does not extend more than 10 meshes forward and is no more than 2' longer than the strengthener [322 CMR 4.06]. Night fishing is prohibited in Commonwealth waters [322 CMR 4.06].
--------------------------	--

AREA/SEASON CLOSURES:	<u>LOCATION</u>	<u>DURATION</u>	<u>REGULATION</u>
	All state waters except within exempted areas	Year Round	322 CMR 4.06
	When permitted the following exemptions apply:		
	Seasonal Small Mesh Trawl Squid Exempted Area	April 23 – June 9 (may be extended).	322 CMR 4.06
	Additional closures apply within Seasonal Small Mesh Trawl Squid Exempted Area:		
	Inshore Restricted Waters (including Buzzards Bay)	Year-Round	322 CMR 4.02
	Fish Weir Buffer Zone	Year-Round	322 CMR 4.03
	Area 5: South and East of Cape Cod (Eastham to Mashpee)	May 1 – October 31	322 CMR 4.06
	Area 6A: Mashpee to Falmouth ½ mile	June 1 – October 31	322 CMR 4.06
	Area 6B: Mashpee to Falmouth ¼ mile	April 23 – May 31	322 CMR 4.06

MASSACHUSETTS DIVISION OF MARINE FISHERIES
RULES & REGULATIONS SUMMARY
(as of June 1, 2021)

Refer to Chapter 130 and 322 CMR for details.

AREA/SEASON CLOSURES: (cont'd)	LOCATION	DURATION	REGULATION
	Area 7: Elizabeth Islands	May 1 – October 31	322 CMR 4.06
	Area 8A: North Shore Nantucket	April 1 – April 30	322 CMR 4.06
	Area 8B: Nantucket Harbor	June 1 – September 15	322 CMR 4.06
	Harwich Reef Restricted Area	Year-Round	322 CMR 8.09
PROHIBITED SPECIES:	May not exceed total of 100 lbs. of flounders in any combination [322 CMR 4.06], striped bass [322 CMR 6.07 and G.L. c. 130 s. 100B], shad and river herring [322 CMR 6.17], smelt [G.L. c. 130 s. 35], sturgeon [322 CMR 6.16], Atlantic salmon [322 CMR 6.06], ocean pout, windowpane flounder and wolffish [322 CMR 6.03], and certain shark species including basking sharks, dusky sharks, sand tiger sharks, and white sharks [322 CMR 6.37]. Lobster [G.L. c. 130 s. 37], except that mobile gear fishermen fishing in federal waters may land up to 100 lobsters per trip in Massachusetts [322 CMR 6.26]. Edible crabs if lobster permit is not held [G.L. c. 130 s. 37 and 322 CMR 6.19].		

MASSACHUSETTS DIVISION OF MARINE FISHERIES
RULES & REGULATIONS SUMMARY
(as of June 1, 2021)

Refer to Chapter 130 and 322 CMR for details.

FISHERY:	NORTHERN SHRIMP: Small-mesh Fishing in Federal Waters				
PERMIT REQUIRED:				<u>Resident</u>	<u>Non-Resident</u>
	(1)	Commercial Fishermen			
		Boat 99+ feet Coastal or Offshore Lobster	\$260	\$520
		Boat 60 - 99 feet	\$195	\$390
		Boat 59 feet or less	\$130	\$260
	(2)	Northern Shrimp regulated fishery endorsement	\$30	\$60
GEAR RESTRICTIONS:	<ul style="list-style-type: none"> • Minimum net mesh size in codend is 1 ¾" [322 CMR 5.05] • Net strengtheners may be used provided the other mesh is at least 6" and at least 3-times larger than the inner mesh and the hanging ratio on the net strengthener must be the same as the net mesh [322 CMR 5.05]. • Chafing gear may be used on lower half of codend if a net strengthener is not used [322 CMR 5.05]. • Nordmore grate (single or double) or other approved finfish excluder device required [322 CMR 5.05] • Maximum distance between trawl doors and trawl wings, including ground cables, bridles, etc. shall not exceed 15 fathoms [322 CMR 5.05]. • Bottom legs must be bare wire or chain [322 CMR 5.05]. 				
REPORTING REQUIREMENTS:	Trip level reporting [G.L. c. 130 s. 21 and 322 CMR 7.01] for permit holders who do not hold a federal permit and submit federal vessel trip reports.				
AREA/SEASON CLOSURES	Northern shrimp fishery is currently subject to a moratorium and it is unlawful to retain, possess or land any species of northern shrimp in Massachusetts [322 CMR 5.04]				
PROHIBITED SPECIES:	Striped bass [322 CMR 6.07 and G.L. c. 130 s. 100B], shad and river herring [322 CMR 6.17], smelt [G.L. c. 130 s. 35], sturgeon [322 CMR 6.16], Atlantic salmon [322 CMR 6.06], any regulated groundfish species [322 CMR 5.06] and certain shark species including basking sharks, dusky sharks, sand tiger sharks, and white sharks [322 CMR 6.37]. Lobster [G.L. c. 130 s. 37], except that mobile gear fishermen fishing in federal waters may land up to 100 lobsters per trip in Massachusetts [322 CMR 6.26]. Edible crabs if lobster permit is not held [G.L. c. 130 s. 37 and 322 CMR 6.19].				

MASSACHUSETTS DIVISION OF MARINE FISHERIES
RULES & REGULATIONS SUMMARY
(as of June 1, 2021)

Refer to Chapter 130 and 322 CMR for details.

FISHERY:	TRAWLING, PURSE SEINING, or HAUL SEINING with Inshore Net Permit in Inshore Restricted Waters.				
PERMIT REQUIRED:				<u>Resident</u>	<u>Non-Resident</u>
	(1)	Commercial Fishermen			
		Boat 99+ feet Coastal or Offshore Lobster	\$260		\$520
		Boat 60 - 99 feet	\$195		\$390
		Boat 59 feet or less	\$130		\$260
	(2)	Regulated inshore restricted waters permit endorsement <i>No special permit needed to fish with a small bait net less than 250 sq. feet or castnet for baitfish for personal use [CMR 4.02]</i>	\$30	\$60
	(3)	Species-specific regulated fishery endorsement	\$30	\$60
PERMIT LIMIT:	Inshore Net Permits are issued in limited numbers by the Director [322 CMR 4.02].				
PERMIT RESTRICTIONS:	Inshore net permit is required to fish in any Inshore Restricted Waters [322 CMR 4.02].				
REPORTING REQUIREMENTS:	Trip level reporting [G.L. c. 130 s. 21 and 322 CMR 7.01] for permit holders who do not hold a federal permit and submit federal vessel trip reports.				
GEAR RESTRICTIONS:	<ul style="list-style-type: none"> • Gear restrictions may exist for certain Inshore Restricted Waters, as described in Inshore Net Permit Conditions [322 CMR 4.02 and 322 CMR 7.01]. • Maximum vessel length is 72' [322 CMR 8.03]. • Night fishing is prohibited in Commonwealth waters [322 CMR 4.06]. 				
AREA/SEASON CLOSURES:	Area and seasonal closures may exist for certain Inshore Restricted Waters, as described in Inshore Net Permit Conditions [322 CMR 4.02 and 322 CMR 7.01].				
PROHIBITED SPECIES:	<ul style="list-style-type: none"> • Species authorized by Inshore Net Permit are listed on Inshore Net Permit Conditions [322 CMR 4.02 and 322 CMR 7.01]. • Limited entry menhaden permit is needed to possess or land more than 6,000 pounds of menhaden [322 CMR 6.43 and 322 CMR 7.01]. 				

MASSACHUSETTS DIVISION OF MARINE FISHERIES
RULES & REGULATIONS SUMMARY
(as of June 1, 2021)

Refer to Chapter 130 and 322 CMR for details.

FISHERY:	PURSE SEINING for SEA HERRING or MENHADEN without Inshore Net Permit Seaward of Inshore Restricted Waters
-----------------	--

PERMIT REQUIRED:			<u>Resident</u>	<u>Non-Resident</u>
	(1)	Commercial Fishermen		
		Boat 99+ feet Coastal or Offshore Lobster	\$260	\$520
		Boat 60 - 99 feet	\$195	\$390
		Boat 59 feet or less	\$130	\$260
	(2)	Species specific regulated fishery permit endorsement	\$30	\$60
	(3)	Coastal Access Permit – purse seine	\$30	\$60
	If fishing in harbors and estuaries:			
	(4)	Inshore Restricted Waters permit endorsement	\$30	\$60

PERMIT RESTRICTIONS:	<ul style="list-style-type: none"> CAP-Purse Seine (open entry) is required to fish seaward of Inshore Restricted Waters [322 CMR 4.02 and 322 CMR 7.01]. CAP-Purse Seine permit conditions apply [322 CMR 7.01]. Sea herring permit (open entry) is required to fish for or land sea herring [322 CMR 7.01 and 322 CMR 9.00]. Menhaden permit endorsements, allowing the possession and landing of more than 6,000 pounds of sea herring, are limited entry and subject to renewal and transfer only [322 CMR 6.43 and 322 CMR 7.06].
-----------------------------	--

REPORTING REQUIREMENTS:	<p>Trip level reporting [G.L. c. 130 s. 21 and 322 CMR 7.01] for permit holders who do not hold a federal permit and submit federal vessel trip reports.</p> <p>Limited access menhaden fishermen and participants in the Episodic Event Set-Aside fishery for menhaden are required to obtain a Bait Dealer Permit and report catch nightly [322 CMR 6.43].</p> <p>Open access menhaden fishermen selling directly to the public are to obtain a Bait Dealer Permit and report all sales on a weekly basis [322 CMR 6.43].</p>
--------------------------------	---

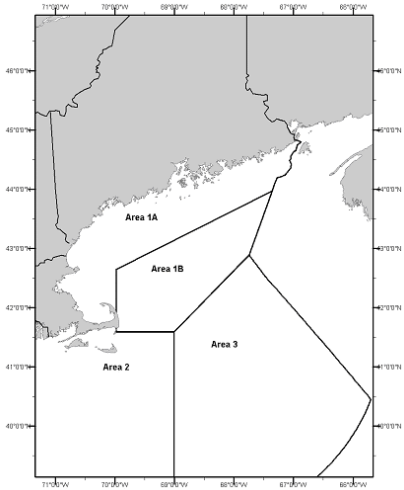
GEAR RESTRICTIONS:	<ul style="list-style-type: none"> Maximum vessel length is 72' [322 CMR 8.03]. Night fishing is prohibited in Commonwealth waters [322 CMR 4.06]. Purse Seines limited to 450' x 48' while fishing under 6,000 pound menhaden limit [322 CMR 6.43].
---------------------------	---

AREA/SEASON CLOSURES:	<u>LOCATION</u>	<u>DURATION</u>	<u>REGULATION</u>
	MA/NH Sea Herring Spawning Closure*	6-weeks	322 CMR 9.03
	Inshore Restricted Waters**	Year-Round	322 CMR 4.02
	Eastern Cape Cod Bay*** (Dennis to Wellfleet)	Year-round	322 CMR 4.01

MASSACHUSETTS DIVISION OF MARINE FISHERIES
RULES & REGULATIONS SUMMARY
(as of June 1, 2021)

Refer to Chapter 130 and 322 CMR for details.

AREA/SEASON CLOSURES CONT'D:	<u>LOCATION</u>	<u>DURATION</u>	<u>REGULATION</u>
	Fish Weir Buffer Zone	Year-round	322 CMR 4.03
	Harwich Reef Restricted Area	Year-Round	322 CMR 8.09
	<p>* Spawning closure goes into effect when sea herring in area are found to be in spawning condition. Closure remains in effect for six-weeks and may be extended for an additional two weeks if catch of sea herring from area is comprised of more than 20% spawn herring [322 CMR 9.03].</p> <p>** Inshore Net Permit required to fish purse seines in Inshore Restricted Waters [322 CMR 4.02]</p> <p>*** Letter of Authorization is required to fish purse seines in those waters shoreward of an imaginary line drawn from Sesuit Harbor to the #1 buoy on Billingsgate Shoal to Jeffery's Point [322 CMR 4.01].</p>		

SEA HERRING MANAGEMENT AREAS & ANNUAL SPECIFICATIONS [322 CMR 9.05]		
	COMMERCIAL LIMITS	
Management Area 1A	<div><div>1.</div><div>Landing and possession by federal category permit holders is regulated through effort controls (days-out and landing limits) specified by the Director and ASMFC (see Director's Declarations).</div><div>2.</div><div>State-only permit holders may possess and land up to 2,000 pounds of sea herring per calendar day.</div><div>3.</div><div>The directed fishery closes when 95% of the Management Area 1A is taken or projected to be taken; and</div><div>4.</div><div>The directed fishery closes when 92% of the overall sea herring quota is taken.</div></div>	
Management Areas 1B, 2 & 3	<div><div>1.</div><div>Landing and possession of herring is managed by federal government.</div><div>2.</div><div>The directed fishery closes Management Area 1B, 2 or 3 quota is taken or projected to be taken; and</div><div>3.</div><div>The directed fishery closes when 92% of the overall sea herring quota is taken.</div></div>	
<div>Exception: Federal category permit holders and state-only permit holders may possess and land up to 2,000 pounds of sea herring when the directed fishery is closed by effort controls or quota closures.</div>		

MASSACHUSETTS DIVISION OF MARINE FISHERIES
RULES & REGULATIONS SUMMARY
(as of June 1, 2021)

Refer to Chapter 130 and 322 CMR for details.

ATLANTIC MENHADEN COMMERCIAL FISHING LIMITS [322 CMR 4.02] and [322 CMR 6.43]			
Tier	Permits Held	Location	Fishing Limits
Tier 1	Menhaden Endorsement Inshore Net Permit CAP-Purse Seine	May fish with purse seines in all state-waters including inshore net areas subject to inshore net permit conditions.	125,000 pounds per trip until 85% of quota is harvested; 25,000 pounds per trip once 85% of the quota is taken until 100% of the quota is taken; 6,000 pounds per trip once 100% of the quota is taken subject to gear restrictions*. May fish at 120,000 pound trip limit if Massachusetts opts into Episodic Event Set Aside program.
Tier 2	Menhaden Endorsement CAP-Purse Seine	May fish with purse seines in all state-waters excluding inshore net areas.	125,000 pounds per trip until 85% of quota is harvested; 25,000 pounds per trip once 85% of the quota is taken until 100% of the quota is taken; 6,000 pounds per trip once 100% of the quota is taken subject to gear restrictions*. May fish at 120,000 pound trip limit if Massachusetts opts into Episodic Event Set Aside program.
Tier 3	CAP-Purse Seine Surface Gillnet	May fish with purse seines or surface gillnets in all state-waters excluding inshore net areas.	6,000 pounds per trip*
Tier 4	Open Access	May fish with small cast nets in all state-waters.	6,000 pounds per trip*
<p>* All menhaden must be immediately brought onboard and stowed in either 55-gallon barrels or standard fish totes. A 55-gallon barrel has a volume-to-weight equivalency of 350 pounds; a standard fish tote has a volume-to-weight equivalency of 117 pounds. Barrels and totes may be used interchangeably with one 55-gallon barrel having the same equivalent weight as three standard fish totes.</p>			

PROHIBITED SPECIES:	<p>Striped bass [322 CMR 6.07] and G.L. c. 130 s. 100B], shad and river herring [322 CMR 6.17], smelt [G.L. c. 130 s. 35], sturgeon [322 CMR 6.16], Atlantic salmon [322 CMR 6.06], ocean pout, windowpane flounder and wolfish [322 CMR 6.03], and certain shark species including basking sharks, dusky sharks, sand tiger sharks, and white sharks [322 CMR 6.37]. Lobster [G.L. c. 130 s. 37], except that mobile gear fishermen fishing in federal waters may land up to 100 lobsters per trip in Massachusetts [322 CMR 6.26]. Edible crabs if lobster permit is not held [G.L. c. 130 s. 37] and [322 CMR 6.19].</p>
----------------------------	---

MASSACHUSETTS DIVISION OF MARINE FISHERIES
RULES & REGULATIONS SUMMARY
(as of June 1, 2021)

Refer to Chapter 130 and 322 CMR for details.

FISHERY:	MOBILE GEAR fishing with SEA SCALLOP DREDGES
-----------------	---

PERMIT REQUIRED:				<u>Resident</u>		<u>Non-Resident</u>
	(1)	Commercial Fishermen				
		Boat 99+ feet Coastal or Offshore Lobster		\$260		\$520
		Boat 60 - 99 feet		\$195		\$390
		Boat 59 feet or less		\$130		\$260
	(2)	Coastal Access Permit Endorsement		\$30		\$60
	If certain species are being taken or landed:					
	(3)	Species-specific regulated fishery endorsement, including groundfish (if vessel has no federal groundfish or monkfish permit).	\$30		\$60

PERMIT LIMIT:	<ul style="list-style-type: none"> Coastal Access Permits limited to those who held permit in 1994 [322 CMR 7.05]. Coastal Access Permits are transferable [322 CMR 7.06]
----------------------	---

PERMIT RESTRICTIONS	<ul style="list-style-type: none"> Subject to daily limits [322 CMR 6.05]. May not discard sea scallops in internal waters [322 CMR 6.05].
----------------------------	--

REPORTING REQUIREMENTS:	Trip level reporting [G.L. c. 130 s. 21] and [322 CMR 7.01] for permit holders who do not hold a federal permit and submit federal vessel trip reports.
--------------------------------	---

GEAR RESTRICTIONS:	<ul style="list-style-type: none"> Maximum effective fishing dredge width of 10' [322 CMR 4.06]. Maximum internal ring diameter of 4" [322 CMR 4.06]. Maximum twine top mesh size of 10" square or diamond [322 CMR 4.06]. Twine top may not be configured to obstruct 10" meshes [322 CMR 4.06]. Vessel maximum size is 72' [322 CMR 8.03]. Night fishing is prohibited in Commonwealth waters [322 CMR 4.06].
---------------------------	---

AREA/SEASON CLOSURES (cont'd):	<u>LOCATION</u>	<u>DURATION</u>	<u>REGULATION</u>
	Fish Weir Buffer Zone	Year-round	322 CMR 4.03
	Winter Flounder Spawning Area	February 1 – May 31	322 CMR 8.04
	Area 1: North Shore (Broad Sound to NH)	Year-round	322 CMR 4.06
	Area 2: Outer Boston Harbor	April 1 – December 31	322 CMR 4.06
	Area 3: South Shore (Plymouth to Hull)	May 1 – October 31	322 CMR 4.06

MASSACHUSETTS DIVISION OF MARINE FISHERIES
RULES & REGULATIONS SUMMARY
(as of June 1, 2021)

Refer to Chapter 130 and 322 CMR for details.

AREA/SEASON CLOSURES (cont'd):	LOCATION	DURATION	REGULATION
	Area 4: Cape Cod Bay (Plymouth to Provincetown)	May 1 – October 31	322 CMR 4.06
	Area 5: South and East of Cape Cod (Eastham to Mashpee)	May 1 – October 31	322 CMR 4.06
	Area 6A: Mashpee to Falmouth ½ Mile	June 1 – October 31	322 CMR 4.06
	Area 6B: Mashpee to Falmouth ¼ Mile	April 23 – May 31	322 CMR 4.06
	Area 7: Elizabeth Islands	May 1- May 31	322 CMR 4.06
	Area 8A: Nantucket North Shore	April 1 – April 30	322 CMR 4.06
	Area 8B: Nantucket Harbor	June 1 – September 15	322 CMR 4.06
PROHIBITED SPECIES:	Striped bass [322 CMR 6.07] and G.L. c. 130 s. 100B], shad and river herring [322 CMR 6.17] , smelt [G.L. c. 130 s. 35] , sturgeon [322 CMR 6.16] , Atlantic salmon [322 CMR 6.06] , ocean pout, windowpane flounder and wolfish [322 CMR 6.03] , any groundfish species taken within a closed groundfish area [322 CMR 8.05] or cod conservation zone [322 CMR 8.07] , and certain shark species including basking sharks, dusky sharks, sand tiger sharks, and white sharks [322 CMR 6.37] . Lobster [G.L. c. 130 s. 37] , except that mobile gear fishermen fishing in federal waters may land up to 100 lobsters per trip in Massachusetts [322 CMR 6.26] . Edible crabs if lobster permit is not held [G.L. c. 130 s. 37] and 322 CMR 6.19].		

MASSACHUSETTS DIVISION OF MARINE FISHERIES
RULES & REGULATIONS SUMMARY
(as of June 1, 2021)

Refer to Chapter 130 and 322 CMR for details.

FISHERY:	COMMERCIAL SHELLFISHING (OTHER THAN DREDGING FOR SURF CLAM OR OCEAN QUAHOGS)																																										
PERMIT REQUIRED:	<p>In approved waters:</p> <p>(1) License from respective coastal municipality [G.L. c. 130 s. 52 and 53]</p> <p>(2) Commercial fishermen license endorsed for shellfish required to sell shellfish harvested from approved waters [G.L. c. 130 s. 75 and 83]</p> <table> <tr> <th colspan="2"><u>Licenses endorsed for Commercial Shellfish</u></th><th><u>Resident</u></th><th><u>Non-Resident</u></th></tr> <tr> <td>Coastal Lobster</td><td>.....</td><td>\$260</td><td>\$520</td></tr> <tr> <td>Large Boat (60' – 90')</td><td>.....</td><td>\$195</td><td>\$390</td></tr> <tr> <td>Small Boat (0' – 59')</td><td>.....</td><td>\$130</td><td>\$260</td></tr> <tr> <td>Individual</td><td>.....</td><td>\$65</td><td>\$130</td></tr> <tr> <td>Shellfish</td><td>.....</td><td>\$40</td><td>\$80</td></tr> <tr> <td>Rod & Reel – Shellfish</td><td>.....</td><td>\$55</td><td>\$130</td></tr> </table> <p>In certain restricted or conditionally restricted areas, as designated by DMF: (Note: Since 1997, DMF no longer permits harvest of contaminated soft shelled clams for bait)</p> <p>(1) License from respective coastal municipality [G.L. c. 130 s. 52 and 53]</p> <p>(2) Special license to harvest, possess, and sell shellfish from restricted areas [322 CMR 7.01 and 7.02]</p> <table> <tr> <th colspan="2"><u>Special Shellfish Permits</u></th><th><u>Resident</u></th><th><u>Non-Resident</u></th></tr> <tr> <td>Master Digger</td><td>.....</td><td>\$250</td><td>\$500</td></tr> <tr> <td>Subordinate Digger</td><td>.....</td><td>\$100</td><td>\$200</td></tr> </table>			<u>Licenses endorsed for Commercial Shellfish</u>		<u>Resident</u>	<u>Non-Resident</u>	Coastal Lobster	\$260	\$520	Large Boat (60' – 90')	\$195	\$390	Small Boat (0' – 59')	\$130	\$260	Individual	\$65	\$130	Shellfish	\$40	\$80	Rod & Reel – Shellfish	\$55	\$130	<u>Special Shellfish Permits</u>		<u>Resident</u>	<u>Non-Resident</u>	Master Digger	\$250	\$500	Subordinate Digger	\$100	\$200
<u>Licenses endorsed for Commercial Shellfish</u>		<u>Resident</u>	<u>Non-Resident</u>																																								
Coastal Lobster	\$260	\$520																																								
Large Boat (60' – 90')	\$195	\$390																																								
Small Boat (0' – 59')	\$130	\$260																																								
Individual	\$65	\$130																																								
Shellfish	\$40	\$80																																								
Rod & Reel – Shellfish	\$55	\$130																																								
<u>Special Shellfish Permits</u>		<u>Resident</u>	<u>Non-Resident</u>																																								
Master Digger	\$250	\$500																																								
Subordinate Digger	\$100	\$200																																								
PERMIT RESTRICTIONS:	<ul style="list-style-type: none"> Shellfish must comply with all sanitary harvest and handling regulations [322 CMR 16.03 and 16.04] All shellfish must be tagged at time of harvest with harvester name and permit number, harvest time and date, shellfish type and quantity, and harvest state and growing area information [322 CMR 16.05 and G.L. c. 130 s. 82] All commercial oyster harvest must conform to the Vp Management Regulations [322 CMR 16.07]. 																																										
REPORTING REQUIREMENTS:	<ul style="list-style-type: none"> Trip level reporting [G.L. c. 130 s. 21 and 322 CMR 7.01] for permit holders who do not hold a federal permit and submit federal vessel trip reports. Cities and towns generally require a yearly catch report at the time of license renewal [G.L. c. 130 s. 52]. Master diggers report as noted in the special permit requirements [322 CMR 7.02]. Vp Logbook reporting is required of oyster harvesters during Vp Control Season [322 CMR 16.07]. 																																										
GEAR RESTRICTIONS:	Subject to municipal control within town waters [G.L. c. 130 s. 52]																																										
AREA/SEASON CLOSURES:	LOCATION Fish Weir Buffer Zone	DURATION Year-round	REGULATION 322 CMR 4.04																																								

MASSACHUSETTS DIVISION OF MARINE FISHERIES
RULES & REGULATIONS SUMMARY
(as of June 1, 2021)

Refer to Chapter 130 and 322 CMR for details.

OTHER CLOSURES:	Shellfish growing waters may be closed to the harvest of shellfish as a result of:	
	(1)	Public health closure based upon water quality, e.g. bacteria or oil spill. [G.L. c. 130 s. 74, 74A and 75 and 322 CMR 16.03]
	Shellfish growing waters may be closed to the harvest of shellfish as a result of:	
	(2)	Marine Biotoxin closure based upon the presence of toxin above NSSP closure levels in raw shellfish [G.L. c. 130 s. 74A and 322 CMR 6.38]
	(3)	DMF Management Closure (MC) based upon the lack of a DMF shellfish sanitary survey, triennial report or NSSP required number of water samples [G.L. c. 130 s. 17, 17A, 74, 74A, 75, 80 and 104 and 322 CMR 7.01 and 322 CMR 16.03].
	(4)	Municipal management closure based upon the closure of an area for management or propagation purposes [G.L. c. 130 s. 20 and 54 and 322 CMR 16.09].
	(5)	April 1 – October 31 closed harvest season for bay scallops April 1 to October 1 each year [G.L. c. 130 s. 71]. DMF may extend season based on municipal petition. Municipalities may modify bay scallop season within the above mentioned season [G.L. c. 130 s. 73]

FISHERY LIMITS:	<u>Possession Limits</u> – For most species harvest limits are subject to municipal regulation [G.L. c. 130 s. 52]		
	<u>Minimum Size</u> – subject to state law or regulation as listed and may be further regulated by the municipality [G.L. c. 130 s. 52].		
	<u>SHELLFISH</u>	<u>MINIMUM SIZE</u>	<u>OTHER RESTRICTIONS</u>
	Channeled Whelk	3 1/4" chute gauge width [322 CMR 6.21]	Mixed channeled and knobbed whelk limit of 1,000 for trawlers and 1-level filled fish tote for hand harvesters [322 CMR 6.21].
	Knobbed Whelk	3 1/4" chute gauge width [322 CMR 6.21]	Mixed channeled and knobbed whelk limit of 1,000 for trawlers and 1-level filled fish tote for hand harvesters [322 CMR 6.21].
	Oyster	Wild and Aquaculture Harvest: 3" shell diameter [322 CMR 6.20]. Aquaculture Harvest: 2 1/2" shell diameter [322 CMR 6.20 and 322 CMR 14.03].	Subject to state Vp regulations during May 19 – October 19 Vp Control Season [322 CMR 16.07]. Other municipal regulations may apply to harvest [G.L. c. 130 s. 52].

MASSACHUSETTS DIVISION OF MARINE FISHERIES
RULES & REGULATIONS SUMMARY
(as of June 1, 2021)

Refer to Chapter 130 and 322 CMR for details.

FISHERY LIMITS Cont'd:	<u>SHELLFISH</u>	<u>MINIMUM SIZE</u>	<u>OTHER RESTRICTIONS</u>
	Quahog	Wild harvest: 1" shell thickness. [322 CMR 6.20]. Aquaculture Harvest (out-of-state sale only): 7/8" shell thickness. [322 CMR 6.20 and 322 CMR 14.03].	Municipal regulations may apply to harvest [G.L. c. 130 s. 52].
	Sea Scallop	3 1/2" shell height [322 CMR 6.05]	200 lb meat or 2,000 lb whole in-shell possession limit. No discarding live sea scallops inside the state's inshore waters. [322 CMR 6.05] Additional municipal regulations may apply to harvest within municipal waters. [G.L. c. 130 s. 52].
	Soft Shelled Clams	2" shell diameter [322 CMR 6.20]	Municipal regulations may apply to harvest [G.L. c. 130 s. 52].
	Bay Scallops	Well-defined raised annual growth line at least 10 millimeters (mm) from the hinge of the shell. Exemption, well-defined raised annual growth line located less than 10 mm from the hinge of the shell if the shell height is at least 63.5 mm (2.5"). [322 CMR 6.11]	Closed season April 1 - October 1 [G.L. c. 130 s. 71] Municipal regulations may apply to harvest [G.L. c. 130 s. 52].
	Surf Clams	5" shell diameter for state waters harvest [322 CMR 6.08]. Aquaculture Harvest (out-of-state sale only): 1 1/2" shell thickness. [322 CMR 6.08 and 322 CMR 14.03]	Federal minimum size restrictions may be waived. [322 CMR 6.08].

MASSACHUSETTS DIVISION OF MARINE FISHERIES
RULES & REGULATIONS SUMMARY
(as of June 1, 2021)

Refer to Chapter 130 and 322 CMR for details.

FISHERY:		COMMERCIAL BAY QUAHOG DREDGING			
PERMIT REQUIRED:				Resident	Non-Resident
	(1)	Commercial Fishermen			
		Boat 99+ feet Coastal or Offshore Lobster	\$260	\$520
		Boat 60 - 99 feet	\$195	\$390
		Boat 59 feet or less	\$130	\$260
(2)	Regulated quahog dredge endorsement	\$30		\$60
PERMIT LIMIT:		Permits are limited entry and subject to renewal and transfer only [322 CMR 6.36 and 322 CMR 7.01].			
PERMIT RESTRICTIONS:		<ul style="list-style-type: none">Regulated bay quahog dredge endorsement is transferable [322 CMR 7.06].Shellfish must comply with all sanitary harvest and handling regulations [322 CMR 16.03 and 16.04]All shellfish must be tagged at time of harvest with harvester name and permit number, harvest time and date, shellfish type and quantity, and harvest state and growing area information [322 CMR 16.05 and G.L. c. 130 s. 82]			
REPORTING REQUIREMENTS:		Trip level reporting [G.L. c. 130 s. 21 and 322 CMR 7.01] for permit holders who do not hold a federal permit and submit federal vessel trip reports.			
GEAR RESTRICTIONS:		<ul style="list-style-type: none">Dredge limited to 48 inches effective fishing width [322 CMR 6.36].Limited to operation of one dredge [322 CMR 6.36].Vessel maximum size: 72 feet registered length [322 CMR 8.03].			
AREA/SEASON CLOSURES:	LOCATION		DURATION		REGULATION
	All state waters closed to night fishing.		Year-round		G.L. c. 130 s. 68 322 CMR 4.06
	Fish Weir Buffer Zone		Year-round		322 CMR 4.03
	Municipal Waters Unless Authorized by Municipality		Year-round		G.L. c. 130 s. 52
	No fishing in any area classified as PROHIBITED by DMF		Year-round		G.L. c. 130 s. 74A and 75
	No fishing in any area closed for management purposes. Contact DMF.		Contact DMF		G.L. c. 130 s. 20
	No fishing in any area not classified as APPROVED according to the National Shellfish Sanitation Program.		Contact DMF		G.L. c. 130 s. 74A and 75
PROHIBITED SPECIES:		Surf clams or ocean quahogs unless permitted [322 CMR 6.08].			
FISHERY LIMITS:		Possession Limits - Limit of 40 bushels per 24 hour day [322 CMR 6.36].			

MASSACHUSETTS DIVISION OF MARINE FISHERIES
RULES & REGULATIONS SUMMARY
(as of June 1, 2021)

Refer to Chapter 130 and 322 CMR for details.

FISHERY:		OCEAN QUAHOG DREDGING			
PERMIT REQUIRED:				Resident	Non-Resident
	(1)	Commercial Fishermen			
		Boat 99+ feet Coastal or Offshore Lobster	\$260	\$520
		Boat 60 - 99 feet	\$195	\$390
		Boat 59 feet or less	\$130	\$260
(2)	Regulated ocean quahog endorsement	\$30		\$60
PERMIT LIMIT:		Surf clam/ocean quahog dredge permits are limited entry and subject to renewal and transfer only [322 CMR 6.08 and 322 CMR 7.01].			
PERMIT RESTRICTIONS:		<ul style="list-style-type: none">Regulated surf clam/ocean quahog dredge permits are transferable [322 CMR 7.06].Shellfish must comply with all sanitary harvest and handling regulations [322 CMR 16.03 and 16.04]All shellfish must be tagged at time of harvest with harvester name and permit number, harvest time and date, shellfish type and quantity, and harvest state and growing area information [322 CMR 16.05 and G.L. c. 130 s. 82]			
REPORTING REQUIREMENTS:		Trip level reporting [G.L. c. 130 s. 21 and 322 CMR 7.01] for permit holders who do not hold a federal permit and submit federal vessel trip reports.			
GEAR RESTRICTIONS:		<ul style="list-style-type: none">Hydraulic dredge limited to 48-inch effective fishing width [322 CMR 6.08]Limited to operation of one dredge [322 CMR 6.08]Pump limited to 300 GPM at a 10-ft. head [322 CMR 6.08].Vessel maximum size: 72 feet registered length [322 CMR 8.03]			
AREA/SEASON CLOSURES:	LOCATION	DURATION	REGULATION		
	All state waters closed to night fishing.	Year-round	G.L. c. 130 s. 68 322 CMR 4.06		
	Fish Weir Buffer Zone	Year-round	322 CMR 4.03		
	No fishing in any area designated as contaminated and classified as PROHIBITED by DMF	Year-round	G.L. c. 130 s. 74A and 75 322 CMR 6.08		
	No fishing in areas not classified as APPROVED according to the National Shellfish Sanitation Program.	Year-round	G.L. c. 130 s. 74A and 75 322 CMR 6.08		
	Ellisville Beach to Manomet Pt	May 15 – Oct 15	322 CMR 6.08		
PROHIBITED SPECIES:	Bay scallops and bay quahogs unless licensed by town where fishing for those species [322 CMR 6.08], any vessel rigged for ocean quahogs may not possess surf clams [322 CMR 6.08].				

MASSACHUSETTS DIVISION OF MARINE FISHERIES
RULES & REGULATIONS SUMMARY
(as of June 1, 2021)

Refer to Chapter 130 and 322 CMR for details.

FISHERY LIMITS:	<u>Minimum Size</u> – None <u>Possession Limits</u> - 26 cages (832 bushels) during any 24 hour period [322 CMR 6.08].
------------------------	---

MASSACHUSETTS DIVISION OF MARINE FISHERIES
RULES & REGULATIONS SUMMARY
(as of June 1, 2021)

Refer to Chapter 130 and 322 CMR for details.

FISHERY:	SURF CLAM DREDGING
-----------------	---------------------------

PERMIT REQUIRED:				<u>Resident</u>		<u>Non-Resident</u>
	(1)	Commercial Fishermen				
		Boat 99+ feet Coastal or Offshore Lobster	\$260		\$520
		Boat 60 - 99 feet	\$195		\$390
		Boat 59 feet or less	\$130		\$260
	(2)	Regulated surf clam endorsement	\$30		\$60

PERMIT LIMIT:	Surf clam/ocean quahog dredge permits are limited entry and subject to renewal and transfer only [322 CMR 6.08 and 322 CMR 7.01].
----------------------	---

PERMIT RESTRICTIONS:	<ul style="list-style-type: none"> Regulated surf clam/ocean quahog dredge permits are transferable [322 CMR 7.06]. Shellfish must comply with all sanitary harvest and handling regulations [322 CMR 16.03 and 16.04] All shellfish must be tagged at time of harvest with harvester name and permit number, harvest time and date, shellfish type and quantity, and harvest state and growing area information [322 CMR 16.05 and G.L. c. 130 s. 82]
-----------------------------	---

REPORTING REQUIREMENTS:	Trip level reporting [G.L. c. 130 s. 21 and 322 CMR 7.01] for permit holders who do not hold a federal permit and submit federal vessel trip reports.
--------------------------------	---

GEAR RESTRICTIONS:	<ul style="list-style-type: none"> Hydraulic dredge limited to 48-inch effective fishing width, except within Chatham municipal waters where a 16" dredge width is required [322 CMR 6.08]. Limited to operation of one dredge [322 CMR 6.08] Pump limited to 3" and 300 PMG or less capacity at a 10' head in Chatham municipal waters [322 CMR 6.08]. Vessel maximum size: 72 feet registered length [322 CMR 8.03].
---------------------------	--

AREA/SEASON CLOSURES	LOCATION	DURATION	REGULATION
	All state waters closed to night fishing	Year-round	G.L. c. 130 s. 68 322 CMR 4.06
	Any area designated as contaminated & classified as PROHIBITED by DMF	Year-round	322 CMR 6.08
	Any area not classified as APPROVED according to the National Shellfish Sanitation Program	Year-round	322 CMR 6.08
	Any area not classified as APPROVED according to the National Shellfish Sanitation Program	Year-round	322 CMR 6.08

MASSACHUSETTS DIVISION OF MARINE FISHERIES
RULES & REGULATIONS SUMMARY
(as of June 1, 2021)

Refer to Chapter 130 and 322 CMR for details.

AREA/SEASON CLOSURES	<u>LOCATION</u>	<u>DURATION</u>	<u>REGULATION</u>
	No dredging for surf clams from Point Allerton, Hull to the NH border except if area is opened for management.	Year-round	322 CMR 6.08
	No dredging of surf clams shoreward of the 12-foot depth contour from Point Allerton, Hull to the RI border (see CMR 6.08(2) (i-k) for exceptions regarding the Towns of Gay Head, Chatham & Nantucket).	Nov. 1 – Apr. 30	322 CMR 6.08
	No dredging of surf clams shoreward of the 20-foot depth contour from Point Allerton, Hull to the RI border (see CMR 6.08 for exceptions regarding the Towns of Gay Head, Chatham & Nantucket).	May 1 – Oct. 31	322 CMR 6.08
	No dredging of surf clams shoreward of line from Long Point, Provincetown to the “Hopper” so called in North Truro.	Year-round	322 CMR 6.08
	No dredging of surf clams shoreward of line from Long Point, Provincetown to the “Hopper” so called in North Truro.	Year-round	322 CMR 6.08
	No dredging of surf clams shoreward of line from Jeremy Point, Wellfleet to the “Spire” in Brewster.	Year-round	322 CMR 6.08
	Ellisville Beach to Manomet Pt	May 15 – Oct 15	322 CMR 6.08
	No dredging of surf clams shoreward of line from Seal Rocks off Scraggy Neck, Bourne to the southernmost tip of Sandy Point Dike, Wareham.	Year-round	322 CMR 6.08

MASSACHUSETTS DIVISION OF MARINE FISHERIES
 RULES & REGULATIONS SUMMARY
 (as of June 1, 2021)

Refer to Chapter 130 and 322 CMR for details.

AREA/SEASON CLOSURES: (cont'd)	LOCATION	DURATION	REGULATION
	No dredging of surf clams within area one-mile seaward from mean low water from Great Point Light to Sankaty Light, Nantucket.	May 1 – Oct. 31	322 CMR 6.08
	No dredging of surf clams shoreward of line from Jeremy Point, Wellfleet to the “Spire” in Brewster.	Year-round	322 CMR 6.08
	Fish Weir Buffer Zone	Year-round	322 CMR 4.03
	Harwich Reef	Year-round	322. CMR 8.09
PROHIBITED SPECIES:	Bay scallops and bay quahogs unless licensed by town where fishing for those species [322 CMR 6.08] .		

MASSACHUSETTS DIVISION OF MARINE FISHERIES
RULES & REGULATIONS SUMMARY
(as of June 1, 2021)

Refer to Chapter 130 and 322 CMR for details.

FISHERY:	SURF CLAM DREDGING IN CONTAMINATED AREAS (Harvest for bait purposes from prohibited areas)
-----------------	---

PERMIT REQUIRED:				<u>Resident</u>		<u>Non-Resident</u>
	(1)	Commercial Fishermen				
		Boat 99+ feet Coastal or Offshore Lobster	\$260		\$520
		Boat 60 - 99 feet	\$195		\$390
		Boat 59 feet or less	\$130		\$260
	(2)	Regulated contaminated surf clam endorsement	\$30		\$60

PERMIT RESTRICTIONS:	<ul style="list-style-type: none"> Fisherman may not hold a Shellfish Transaction Card [322 CMR 6.08]. Catch must be landed & distributed according to permit restrictions [322 CMR 6.08]. All shellfish must be landed at a location to be named on the permit [322 CMR 6.08].
-----------------------------	--

REPORTING REQUIREMENTS:	<ul style="list-style-type: none"> Trip level reporting [G.L. c. 130 s. 21 and 322 CMR 7.01] for permit holders who do not hold a federal permit and submit federal vessel trip reports. Daily record of sales must be kept [322 CMR 6.08]. All bags and containers must be labeled at sea with red tags stating: "CONTAMINATED SHELLFISH – FOR BAIT PURPOSES ONLY" [322 CMR 6.08].
--------------------------------	--

GEAR RESTRICTIONS:	<ul style="list-style-type: none"> Hydraulic dredge limited to 16-inch effective fishing width. [322 CMR 6.08]. Limited to operation of one dredge [322 CMR 6.08]. Pump limited to 300 GPM at a 10-ft. head [322 CMR 6.08]. Vessel maximum size: 72 feet registered length [322 CMR 8.03].
---------------------------	--

AREA/SEASON CLOSURES:	LOCATION	DURATION	REGULATION
	All state waters closed to night fishing	Year-round	G.L. c. 130 s. 68 322 CMR 4.06
	Fish Weir Buffer Zone	Year-round	322 CMR 4.03
	Any area not specifically endorsed on permit	Year-round	322 CMR 6.08
	No fishing in areas classified as APPROVED.	Year-round	322 CMR 6.08

PROHIBITED SPECIES:	All other shellfish species.
----------------------------	------------------------------

FISHERY LIMITS:	<u>Minimum Size</u> - Surf clam minimum size limit 5" shell diameter [322 CMR 6.08]. <u>Possession Limits</u> - Limit of 50 bushels of shell stock or 100 gallons shucked per 24-hour trip [322 CMR 6.08]
------------------------	--

MASSACHUSETTS DIVISION OF MARINE FISHERIES
RULES & REGULATIONS SUMMARY
(as of June 1, 2021)

Refer to Chapter 130 and 322 CMR for details.

FISHERY:		SEA URCHIN FISHERY using DREDGES				
PERMIT REQUIRED:				Resident		Non-Resident
	(1)	Commercial Fishermen				
		Boat 99+ feet Coastal or Offshore Lobster	\$260		\$520
		Boat 60 - 99 feet	\$195		\$390
		Boat 59 feet or less	\$130		\$260
	(2)	Regulated sea urchin endorsement	\$30		\$60
	(3)	Mobile gear coastal access endorsement (if fishing with dredge greater than 48 inches in waters open to mobile gear fishing)	\$30		\$60
PERMIT RESTRICTIONS:	Must hold an open entry regulated fishery permit for surf clam dredging and affidavit must be submitted [322 CMR 6.24 and 322 CMR 7.01]. Coastal Access Permit must be held to fish a dredge larger than 48” [322 CMR 7.05] in areas open to mobile gear fishing [322 CMR 4.06]					
REPORTING REQUIREMENTS:	Trip level reporting [G.L. c. 130 s. 21 and 322 CMR 7.01] for permit holders who do not hold a federal permit and submit federal vessel trip reports.					
GEAR RESTRICTIONS:	<ul style="list-style-type: none">Limited to single dredge of 48 inches effective fishing width if fishing in areas closed to mobile gear (spare may be stowed on board) [322 CMR 6.24].Frame constructed of ¾” (or smaller) stock with skids 3’ or less [322 CMR 6.24].Chain sweep constructed of no more than ¼” in a single layer square pattern less than 4 ½’ long [322 CMR 6.24].Twine codend maximum 5’ long [322 CMR 6.24].Chafing gear constructed of twine or rubber mat maximum 5’ long and 4’ wide [322 CMR 6.24].Cable for towing dredge: maximum diameter 3/8” cable or 5/8” rope [322 CMR 6.24].Limited to use and possession of dredge or combination of dredges with an effective fishing width of 10 feet when fishing in areas open to mobile gear [322 CMR 6.24].Vessel maximum size: 72 feet registered length [322 CMR 8.03].					
AREA/SEASON CLOSURES:	LOCATION		DURATION		REGULATION	
	All state waters closed to night fishing.		Year-round		G.L. c. 130 s. 68 322 CMR 4.06	
	Fish Weir Buffer Zone		Year-round		322 CMR 4.03	
	All state waters.		Mar 1 – Oct 31		322 CMR 6.24	
PROHIBITED SPECIES:	No bycatch of regulated species allowed, including any finfish, lobsters, or shellfish [322 CMR 6.24]; sub-legal urchins must be culled and returned immediately [322 CMR 6.24].					
FISHERY LIMITS:	2” minimum size [322 CMR 6.24].					

MASSACHUSETTS DIVISION OF MARINE FISHERIES
RULES & REGULATIONS SUMMARY
(as of June 1, 2021)

Refer to Chapter 130 and 322 CMR for details.

FISHERY:		SEA URCHIN FISHERY with SCUBA			
PERMIT REQUIRED:				Resident	Non-Resident
	(1)	Commercial Fishermen			
		Boat 99+ feet Coastal or Offshore Lobster	\$260	\$520
		Boat 60 - 99 feet	\$195	\$390
		Boat 59 feet or less	\$130	\$260
			or		
		Individual	\$65	\$130
	(2)	Regulated sea urchin endorsement	\$30	\$60
PERMIT RESTRICTIONS:		Open entry sea urchin diving permit is required and affidavit must be submitted [322 CMR 6.24 and 322 CMR 7.01].			
REPORTING REQUIREMENTS:		Trip level reporting [G.L. c. 130 s. 21 and 322 CMR 7.01] for permit holders who do not hold a federal permit and submit federal vessel trip reports.			
GEAR RESTRICTIONS:		Vessel maximum size: 72 feet registered length [322 CMR 8.03].			
AREA/SEASON CLOSURES:	LOCATION		DURATION	REGULATION	
	All state waters.		May 1 – Aug. 31	322 CMR 6.24	
	Fish Weir Buffer Zone within the area marked by anchor buoys.		Year-round	322 CMR 4.03	
PROHIBITED SPECIES:		No bycatch of regulated species allowed, including any finfish, lobsters, or shellfish [322 CMR 6.24]. Sublegal urchins must be culled and returned immediately [322 CMR 6.24].			
FISHERY LIMITS:		2” minimum size [322 CMR 6.24].			
PROHIBITED SPECIES:		Bay scallops and bay quahogs unless licensed by town where fishing for those species is authorized [322 CMR 6.24].			

MASSACHUSETTS DIVISION OF MARINE FISHERIES
RULES & REGULATIONS SUMMARY
(as of June 1, 2021)

Refer to Chapter 130 and 322 CMR for details.

REGULATED FISHERY PERMIT ENDORSEMENTS

If certain species are being taken or landed or gear type used, commercial permits must be endorsed with the relevant regulated fishery permit endorsements. Each endorsement is assessed the indicated fee (**Not available for student lobster permittees**):

	<u>Resident</u>		<u>Non-Resident</u>
Regulated Fishery Endorsement (open access)	\$30		\$60
American Eel Bay Scallop Shucking CAP-Purse Seine Dogfish Fish Weir Inshore Net Northern Shrimp Scup Sea Herring Sea Scallop Diving Sea Scallop Shucking Sea Urchin Diving Sea Urchin Dredge Shellfish Striped Bass Surf Clam (Contaminated) Surface Gillnet			
Regulated Fishery Endorsement (limited access) ...	\$30		\$60
Black Sea Bass Bluefin Tuna by Purse Seine Bluefish Gillnet Bottom Gillnet CAP (Mobile Gear) Fish Pot – Black Sea Bass Fish Pot – Conch Fish Pot – Scup Fluke Gillnets Horseshoe Crab Menhaden Surf Clam/Ocean Quahog Quahog Dredge Tautog			

MASSACHUSETTS DIVISION OF MARINE FISHERIES
RULES & REGULATIONS SUMMARY
(as of June 1, 2021)

Refer to Chapter 130 and 322 CMR for details.

RECREATIONAL FISHING LIMITS SUMMARY

Species	Season	Minimum Size	Bag Limit
American Eel (1) Private	Year-Round	9"	25-fish harvest limit
American Eel For-Hire			50-fish harvest limit
Black Sea Bass (2)	May 18 – September 8	15"	5-fish
Blue Crabs (3)	May 1 – December 31	5"	25-crabs
Blue Marlin	Federal rules apply. Consult the National Marine Fisheries Service Highly Migratory Species office website .		
Bluefish Private	Year-Round	N/A	3-fish
Bluefish For-Hire			5-fish
Cod (4)(5) North of Cape Cod	April 1 – April 15 September 15 – September 30	21"	1-fish
Cod (4)(5) South of Cape Cod	Year-Round	21"	10-fish
Dab (4)(5) (American Plaice)	Year-Round	14"	No Limit
Summer Flounder (Fluke)	May 23 – October 9	17"	5-fish
Grey Sole (4)(5) (Witch Flounder)	Year-Round	14"	No Limit
Haddock (4)(5) North of Cape Cod	January 1 – February 28 April 15 – December 31	17"	15-fish
Haddock (4)(5) South of Cape Cod	Year-Round	18"	No Limit
Halibut (4)(5)	Year-Round	41"	1-fish
Jonah and Rock Crabs (3)	May 15 – December 31	N/A	50-crabs
Lobster (6)	Year-Round	Area Dependent	15-lobsters
Monkfish (4)(5)	Year-Round	17"	No Limit
Ocean Pout (4)(5)	Closed	N/A	Prohibited
Oyster (1)	Contact Municipality	3" diameter	Contact Municipality
Pollock (4)(5)	Year-Round	N/A	No Limit
Quahog (1)	Contact Municipality	1" thickness	Contact Municipality
Redfish (4)(5)	Year-Round	9"	No Limit
River Herring	Closed	N/A	Prohibited
Sailfish	Federal rules apply. Consult the National Marine Fisheries Service Highly Migratory Species office website .		
Scup (7) Private	Year-Round	9"	30-fish
Scup (7) For-Hire	January 1 – April 30 May 1 – June 30 July 1 – December 31		30-fish 50-fish 30-fish
Shad Merrimack River	Year-Round	N/A	3-fish
Connecticut River			3-fish
All Other Waters			Catch and Release

MASSACHUSETTS DIVISION OF MARINE FISHERIES
RULES & REGULATIONS SUMMARY
(as of June 1, 2021)

Refer to Chapter 130 and 322 CMR for details.

Species	Season	Minimum Size	Bag Limit
Sharks	Refer to 322 CMR 6.37 . Also federal rules may apply. Consult the National Marine Fisheries Service Highly Migratory Species office website .		
Soft Shelled Clams	Contact municipality	2" diameter	Contact municipality
Smelt	June 16 – March 14	N/A	50-fish
Spiny Dogfish	Year-Round	N/A	No Limit
Striped Bass (8)	Year-Round	28" – less than 35"	1-fish
Tautog (9)	January 1 – March 31	16"	Prohibited
	April 1 – May 31		3-fish
	June 1 – July 31		1-fish
	August 1 – October 14		3-fish
	October 15 – December 31		5-fish
Tunas	Federal rules may apply. Consult the National Marine Fisheries Service Highly Migratory Species office website .		
Weakfish	Year-Round	16"	1-fish
Windowpane Flounder (4)(5)	Closed	N/A	Prohibited
Winter Flounder (4)(5) North of Cape Cod	Year Round	12"	8-fish
Winter Flounder (4)(5) South of Cape Cod	March 1 – December 31	12"	2-fish
Wolffish (4)(5)	Closed	N/A	Prohibited
Yellowtail Founder (4)(5)	Year-Round	13"	No Limit
<div>1. Subject to joint state and municipal regulation [G.L. c. 130 s. 52]. Consult local regulations for additional restrictions.</div> <div>2. Black sea bass are measured from the tip of the snout or jaw (mouth closed) to the farthest extremity of the tail not including the tail filament.</div> <div>3. Blue crabs may not be taken by cylindrical or six-sided traps. A non-commercial lobster permit is not required for taking blue crabs by active fishing gears or open topped or collapsible traps. A non-commercial lobster permit is required for the taking of all other edible crabs by cylindrical or six sided traps. 50 crab limit for cancer crabs does not apply to crabs purchased for bait from a bait dealer. [322 CMR 6.19]. Fishing with buoyed crabs traps is prohibited from November 1 – May 15 [322 CMR 12.04].</div> <div>4. Hook and line fishing is prohibited in Winter Cod Conservation Zone (November 15 – January 31) and Spring Cod Conservation Zone (April 16 – July 21) [322 CMR 8.07].</div> <div>5. Federal rules apply beyond state-waters. Consult NOAA Fisheries.</div> <div>6. A non-commercial lobster permit is required to recreationally harvest lobsters. Permit allows setting of traps in one of three recreational lobster areas (Gulf of Maine, Outer Cape, and Southern New England). Each area has its specific minimum, maximum size and rules. The retention of female lobsters with a v-notch indentation measuring 1/8" or greater with or without setal hairs, on its flipper is prohibited [322 CMR 6.02]. Fishing with buoyed lobster traps is prohibited from November 1 – May 15 [322 CMR 12.04].</div> <div>7. Private vessels with six or more anglers onboard may not possess or land more than 150 scup [322 CMR 6.37].</div> <div>8. Striped bass are measured from the tip of the snout or jaw (mouth closed) to the farthest extremity of the tail. The discard of dead legal sized striped bass is unlawful. The practice of high-grading, whereby legal sized striped bass are released in favor of larger fish caught subsequently is unlawful. Accordingly, it is also unlawful to keep a striped bass alive in water by attaching a line or chain to the fish (stringer), or placing it in a live well or holding car. Striped bass must be kept whole, meaning the head, tail, and body remain intact. Only evisceration is allowed. Permitted for-hire vessels may fillet striped bass for their customers. All recreational anglers are required to use inline circle hooks when fishing for striped bass with whole or cut natural baits, except when fishing with a natural bait attached to an artificial lure (e.g., tube and worm).The use non-lethal devices to remove striped bass from the water is required; gaffing striped bass is prohibited.</div> <div>9. When the tautog fishery is open, anglers fishing from a private vessel as subject to a 10-fish maximum vessel limit. The most restrictive limit among the per angler bag limit or the vessel limit applies.</div>			

MASSACHUSETTS DIVISION OF MARINE FISHERIES
RULES & REGULATIONS SUMMARY
(as of June 1, 2021)

Refer to Chapter 130 and 322 CMR for details.

COMMERCIAL FISHING LIMITS SUMMARY

Species	Fishery	Season	Size Limit	Possession Limit
American Eel (1)	All	Year-Round	9"	No Limit
Black Sea Bass (2)	All Gears	January 1 – March 31	12"	100 lbs
	Weirs	January 1 – Set-Aside		No Daily Limit
	Trawlers	April 23 – Quota		100 pounds
	Pots	July 9 – Quota		400 pounds
	Hook and Line	July 9 - Quota		200 pounds
Bluefish	All	January 1 – Quota	N/A	5,000 pounds
Cancer Crabs	Lobster Pots	May 1 – December 31	4 ¾"	No Limit
	Other Gears			1,000 pounds not to exceed 50% of catch
Cod (3)(4)	North of Cape Cod	Year-Round	22"	200 pounds
	South of Cape Cod		24"	1,000 pounds
Dab (3)(4) American Plaice	All	Year-Round	12"	No Limit
Haddock (3)(4)	All	Year-Round	16"	No Limit
Horseshoe Crab (5)	Biomedical	Year-Round	7" width	1,000 crabs
	Mobile Gear (permitted)	January 1 - Quota		300 crabs
	Mobile Gear (unpermitted)	January 1 - Quota		75 crabs
	Other Gears	January 1 - Quota		400 crabs
Illex Squid (6)	All	January 1 - Quota	N/A	No Limit
Longfin Squid (6)	All	January 1 – Quota	N/A	No Limit
		May 1 – Quota		
		September 1 – Quota		
Menhaden (7)	Open Access	Year-Round	N/A	6,000 pounds
	Limited Access	January 1 - Quota		125,000 pounds until 85% of quota
				25,000 pounds until 100% of quota
				6,000 pounds after 100% of quota
Monkfish (3)(4)(8)	All	Year-Round	17"	1,560 pounds of whole monkfish
Northern Shrimp	All	Closed	N/A	Prohibited
Ocean Pout (3)(4)	All	Closed	N/A	Prohibited
Oyster (1)	Contact Municipality	Contact Municipality	3" (wild)	Contact Municipality
			2 ½" (aquaculture)	
Pollock (3)(4)	All	Year-Round	N/A	No Limit
Quahog (1)	Contact Municipality	Contact Municipality	1" (wild)	Contact Municipality
			7/8" (aquaculture)	
Redfish (3)(4)	All	Year-Round	9"	No Limit
River Herring (9)	All	Closed	N/A	Prohibited in state-waters

MASSACHUSETTS DIVISION OF MARINE FISHERIES
RULES & REGULATIONS SUMMARY
(as of June 1, 2021)

Refer to Chapter 130 and 322 CMR for details.

Species	Fishery	Season	Size Limit	Possession Limit
Scup (10)	Winter 1	January 1 – April 30	9”	TBD
	Small Mesh Trawl	April 15 – June 15		2,000 pounds
	Fish Weir	May 1 – Set Aside		No Daily Limit
	All Gears 1	May 1 – May 31		800 pounds
	All Gears 2	June 1 – June 30		400 pounds
	All Gears 3	July 1 – September 30		1,500 pounds
	Winter 2	November 1 – December 31		TBD
Sea Herring	Open seasons, fishing days and closures are set by Director’s Declaration . A 2,000 pound incidental catch and small scale fishery limit applies during all closed periods.			
Soft Shelled Clam (1)	Contact Municipality	Contact Municipality	2” diameter	Contact Municipality
Smelt	Hook and Line Only	June 16 – March 14	No limit	50-fish
Smooth Dogfish	All Gears but Longline	January 1 - Quota	No Limit	100-lbs
Spiny Dogfish	All Gears	January 1 – Quota	No Limit	6,000 pounds
Striped Bass (11)	Boat Permit from Named Vessel	June 24 – Quota	35”	15-fish
	All Other Activity			2-fish
Summer Flounder (12) Fluke	P1: Nets	January 1 – April 22	14”	1,000 pounds
	P2: Nets	April 23 – June 9		100 pounds
	P2: Longline	April 23 – June 9		100 pounds
	P2: Hook and Line	April 23 – June 9		Prohibited
	P2: Nets	June 10 – October 31		400 pounds
	P2: Hook and Line	June 10 – October 31		250 pounds
	P2: All Gears	November 1 – December 31		1,000 pounds
Tautog (13)	All	September 1 – Quota	16”	40-fish
Weakfish	All	January 1 – December 31	16”	100-pounds
Whelks (knobbed and channeled)	Pots	April 15 – December 14	3” gauge	No Limit
	Trawls	Year-Round		1,000 pounds (mixed)
	Hand harvest	Year-Round		1-level filled fish tote (mixed)
Windowpane Flounder (3)(4)	All	Closed	N/A	Prohibited
Winter Flounder (3)(4)	Gulf of Maine	Year Round	12”	500 pounds
	Southern New England			50 pounds
Witch Flounder (3)(4)	All	Year-Round	14”	750 pounds
Wolffish (3)(4)	All	Closed	N/A	Prohibited
Yellowtail Founder (3)(4)	All	Year-Round	13”	250 pounds
<div>1. Subject to joint state and municipal regulation [G.L. c. 130 s. 52]. Consult local regulations for additional restrictions.</div> <div>2. Black sea bass are measured from the tip of the snout or jaw (mouth closed) to the farthest extremity of the tail not including the tail filament. Fish weirs are not subject to a daily limit but a 24,000 pound annual set-aside. Aggregate landings by trawlers during the April 23 – June 9 squid trawl fishery are capped at 50,000 pounds. There are no closed fishing days during the squid trawl fishery; during the summertime trawl fishery retention and landing may occur Sunday – Thursday. The directed trap and hook and line fishery opens on June 8 and remains open until the annual quota is landed. Open fishing days for the directed fishery are Sundays, Tuesdays and Thursdays.</div> <div>3. Federal permit holders may land groundfish in accordance with federal rules. The trip limits listed apply to state-only permit holders and federal permit holders fishing in state-waters. Nonpermitted commercial fishermen may take up to 25 pounds of regulated groundfish per day in state-waters.</div> <div>4. Fishing for groundfish is subject to various spatial and temporal gear, harvest and spawning closures. See 322 CMR 4.00, 8.00 and 12.00.</div> <div>5. A special biomedical permit is required to participate in the biomedical fishery. A biomedical permit holder may not also hold a bait permit. All crabs harvested for biomedical purposes may be sold to dealers authorized</div>				

MASSACHUSETTS DIVISION OF MARINE FISHERIES
RULES & REGULATIONS SUMMARY
(as of June 1, 2021)

Refer to Chapter 130 and 322 CMR for details.

- to purchase crabs for biomedical purposes. After crabs are bled by the biomedical firm they must be returned to the area of harvest. All horseshoe crab harvest is subject to 5-day lunar closures from late April through June. Mobile gear participants are subject to closed fishing days on Fridays and Saturdays beginning on June 10.
6. Squid are managed federally under the Atlantic Mackerel, Squid and Butterfish Management Plan. The fisheries are quota managed and federal limits are set by NOAA Fisheries. The longfin squid quota is allocated into three trimester periods. Small mesh trawl fishing is authorized in certain waters south of Cape Cod from April 23 – June 9 for CAP-Squid permit holders. This seasonal allowance may be extended by the Director.
 7. All commercial fisherman may retain and land up to 6,000 lbs of menhaden per day. If fishing under this 6,000 pound trip limit, fish are to be immediately stowed in 55-gallon barrels or standard fish totes. A level filled barrel is the equivalent of 350 pounds and a level filled fish tote is the equivalent of 117 pounds. Fish may be stored in both totes and barrels during the same trip, with one barrel having the equivalent weight as three totes. During the open entry fishery and the Episodic Event Fishery, fishermen fishing under the 6,000 pound limit are subject to a maximum purse seine size of 450' length by 48' depth. Note this 6,000 lb limit remains in effect after 100% of the quota is taken, as a small scale fishery and incident catch limit. Fishermen fishing under this limit are subject to the same fish storage and volume-to-weight requirements described above. However, they are also required to use a smaller purse seine net, which measures 300' long by 48' deep. Commercial fishermen with a limited entry menhaden commercial permit endorsement may take menhaden in excess of 6,000 lbs. The limited entry fishery is quota dependent and the trip limits are adjusted based on quota availability. The fishery opens with a 125,000 lb trip limit, which remains in effect until 85% of the quota is taken. A 25,000 lb trip limit goes into effect once 85% of the quota is taken and that trip limit remains in effect until 100% of the quota is taken. The use of nets within inshore waters is prohibited without an inshore net permit. The use of small bait nets of no more than 250 ft is authorized exempt from this prohibition. Consult 322 CMR 4.02 and 6.43 for more details.
 8. Monkfish may be processed at-sea into tails and livers. Tails must be 11" length and total weight may not exceed 536 pounds. Monkfish livers must not exceed 25% the weight of the monkfish tails or 10% the weight of whole monkfish being landed.
 9. The harvest of river herring is prohibited in state-waters. However, vessels fishing in federal bait fisheries may land an incidental catch of river herring taken from federal waters provided that it does not comprise more than 5% by count of the catch.
 10. Fish weirs are not subject to daily trip limits or closed fishing days. However, they are subject to a 300,000 pound annual set-aside. Trawlers fishing with mesh less than 5" may land 1,000 pounds of scup from October 1 – April 14, 2,000 pounds of scup from April 15 – June 15 and 200 pounds of scup from June 16 – September 30. Trawlers may land scup 7-days per week. Hook and line and trap fishermen may land scup Sundays-Thursdays in May, Sundays, Tuesdays, and Wednesdays in June, and seven days per week from July 1 – April 30. The Winter I and Winter II periods are managed by the federal government and DMF establishes complimentary limits by [Director's Declaration](#).
 11. Striped bass may be taken by hook and line gear only. Netting, spearing, and snagging striped bass is prohibited (G.L. c. 130 §100B). High-grading and fillet striped bass is prohibited. Fishermen fishing under the authority of a commercial boat permit or lobster permit when fishing aboard the vessel named on the permit are subject to the 15-fish limit. However, fishermen fishing under the authority of a commercial boat permit or lobster permit when fishing from another location (e.g., shore or another vessel) are subject to the 2-fish limit. All Individual and Rod and Reel permit holders are subject to the 2-fish limit as well. The commercial striped bass open fishing days for the 2021 season are Mondays, Tuesdays, and Wednesdays. As the open fishing days are now consecutive, commercial fishermen will be afforded the opportunity to fish overnight tides spanning open fishing days. Accordingly, fishermen may retain, land, and sell fish on Monday and then begin fishing again on Monday and continue fishing into Tuesday morning to land and sell fish again Tuesday. However, if doing so, they may not possess or sell more than one limit during any single calendar day. If an open fishing day falls on the 3rd or 4th of July or the quota remains open on Labor Day, the commercial striped bass fishery will be closed. Possession limits apply to both permit holders, regardless of the number of permits held, and vessels, regardless of the number of permits on board. If the annual quota is not taken by November 15, then the fishery closes on November 16.
 12. The P1 fishery (Jan 1 - Apr 22) is allocated 30% of the annual quota. By regulation, the trip limit for P1 starts at 1,000 pounds and is reduced to 100 lbs once 25% of the quota is landed. The P1 trip limit may also be increased by an in-season adjustment to allow commercial fishermen to have greater access to the available quota allocation. For 2021, the P1 trip limit was increased to 2,000 on January 1. DMF has also reauthorized a pilot program that allows vessels to possess non-conforming quantities of summer flounder that represent lawfully harvested trip limits from RI, CT or NY (if so permitted) when offloading in MA. The P2 (April 23 - Quota) fishery is allocated any quota that remains after P1 and is sub-divided into three seasons. During April 23 - June 9 season, longline fishermen and net fishermen may retain and land up to 100 pounds of summer flounder per trip and there are no closed fishing days; the retention and landing of fluke by other gear types is prohibited. During the directed summertime fishery (June 10 - September 30) open fishing days occur Sundays through

MASSACHUSETTS DIVISION OF MARINE FISHERIES
RULES & REGULATIONS SUMMARY
(as of June 1, 2021)

Refer to Chapter 130 and 322 CMR for details.

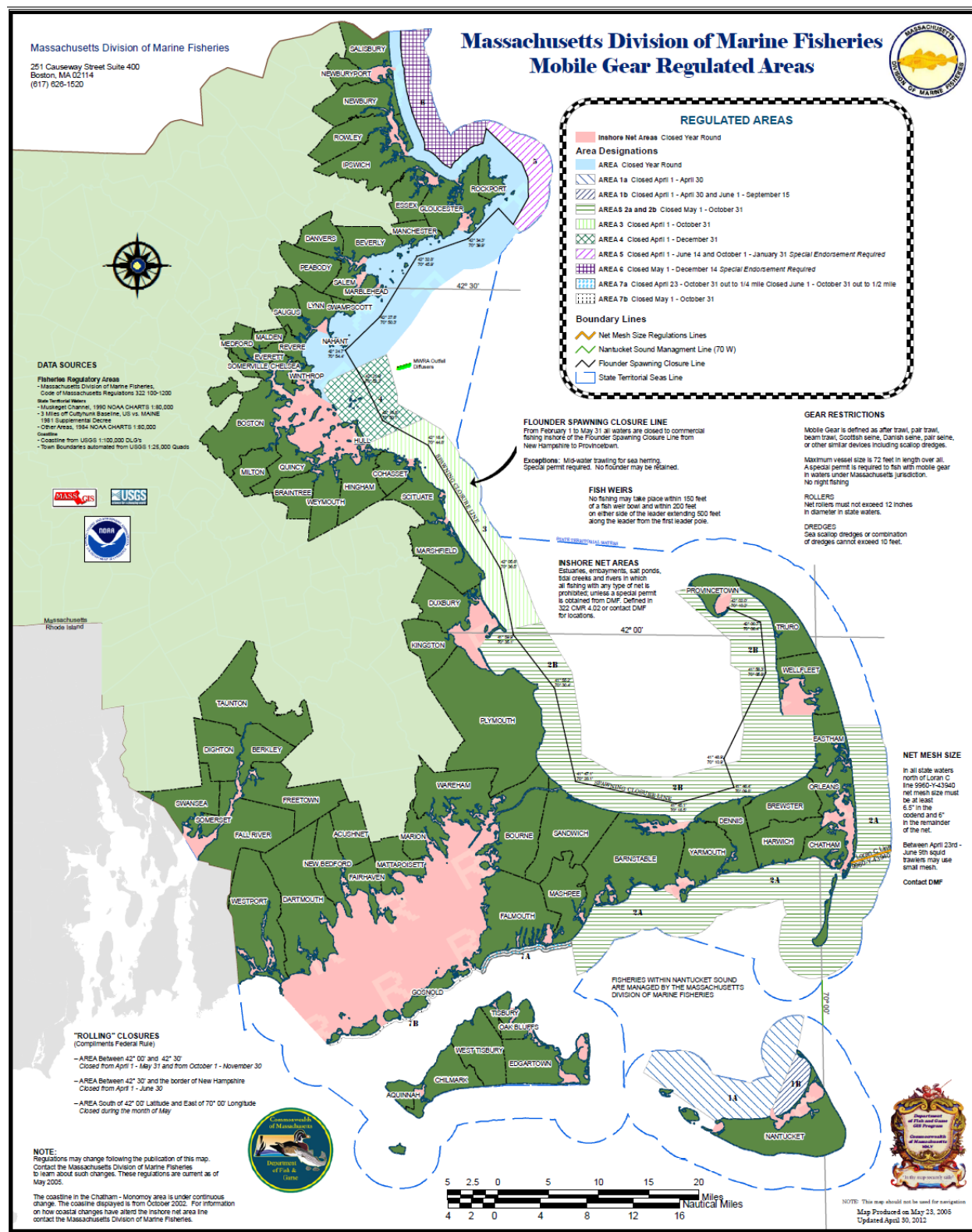
Thursdays; it is unlawful to retain and land fluke on Fridays and Saturdays. During the offshore October 1 - December 31 fishery there are no closed fishing days and the trip limit is 500 pounds if less than 5% of the quota remains available on November or 1,000 pounds if 5% or more of the quota remains available on November 1. Year-round, it is unlawful to land fluke during the period of 8 p.m.-6 a.m.

13. Commercial fishermen must tag their catch of tautog prior. A metal tag must be pierced through the operculum upon completion of commercial fishing activity and prior to offloading or carrying. No tautog may be sold if it does not bear a tag. Tags will be issued by DMF prior to the September 1 start of the tautog season. Fishermen must obtain a tautog tag applicator independently. Unused tags and a tag report are to be submitted to DMF by the close of the fishery.

MASSACHUSETTS DIVISION OF MARINE FISHERIES
RULES & REGULATIONS SUMMARY
(as of June 1, 2021)

Refer to Chapter 130 and 322 CMR for details.

MA Mobile Gear Closures (322 CMR 4.06)

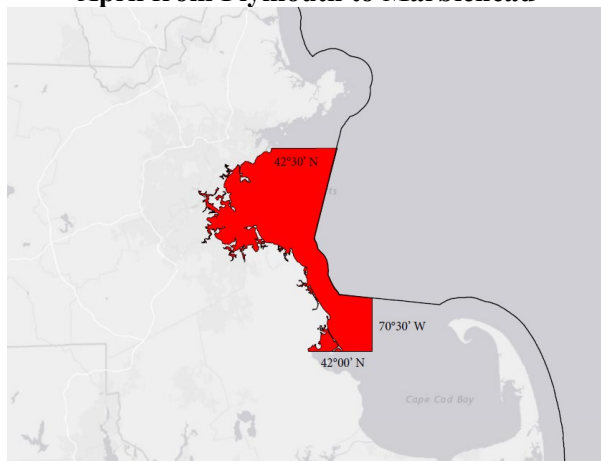


MASSACHUSETTS DIVISION OF MARINE FISHERIES
RULES & REGULATIONS SUMMARY
(as of June 1, 2021)

Refer to Chapter 130 and 322 CMR for details.

SEASONAL GROUNDFISH CLOSURES I-IV (322 CMR 8.05)

Groundfish Closure I
April from Plymouth to Marblehead



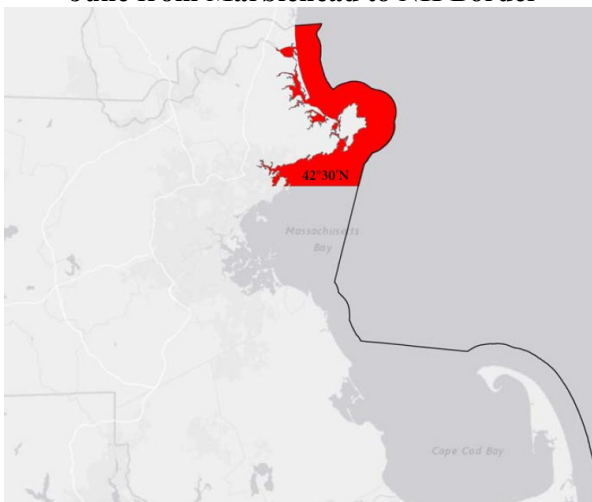
Groundfish Closure II
May from Boston to NH Border



Groundfish Closure III
May East of Cape Cod



Groundfish Closure IV
June from Marblehead to NH Border

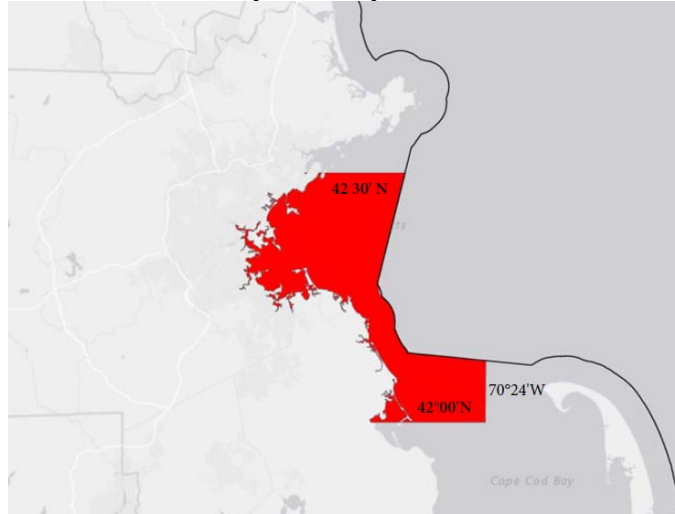


MASSACHUSETTS DIVISION OF MARINE FISHERIES
RULES & REGULATIONS SUMMARY
(as of June 1, 2021)

Refer to Chapter 130 and 322 CMR for details.

SEASONAL GROUNDFISH CLOSURE V (322 CMR 8.05)

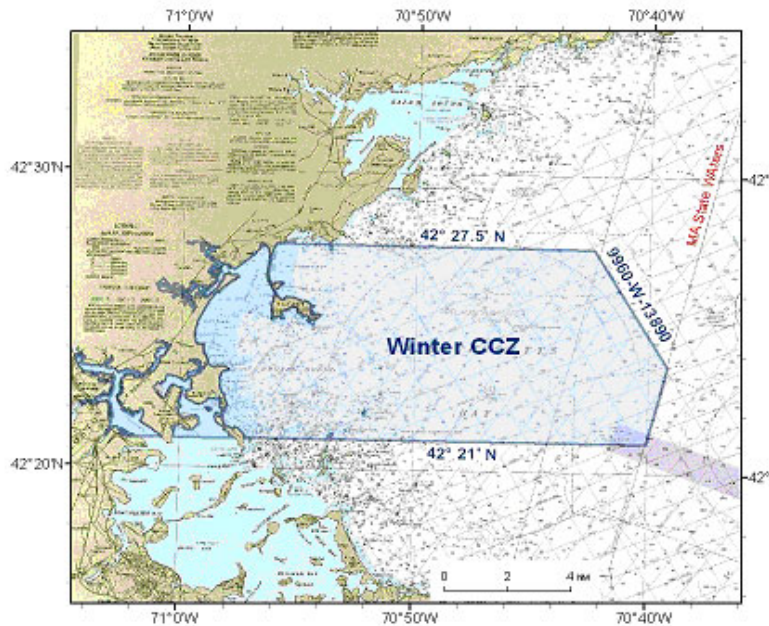
**Groundfish Closure V
October - January from Plymouth to Marblehead**



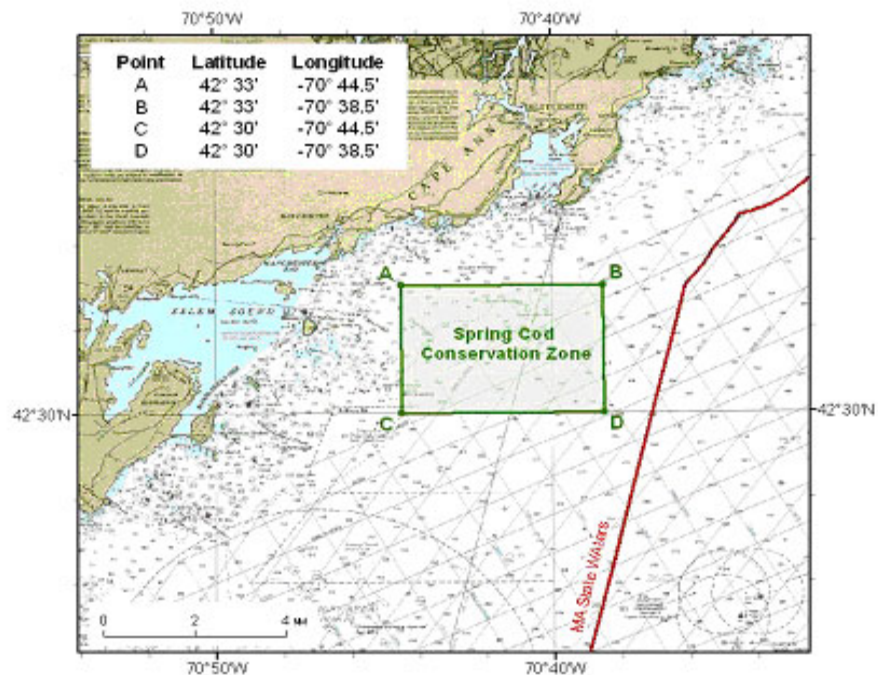
MASSACHUSETTS DIVISION OF MARINE FISHERIES
RULES & REGULATIONS SUMMARY
(as of June 1, 2021)

Refer to Chapter 130 and 322 CMR for details.

**WINTER COD CONSERVATION ZONE – NOV. 15 – JAN 31
(322 CMR 8.07)**

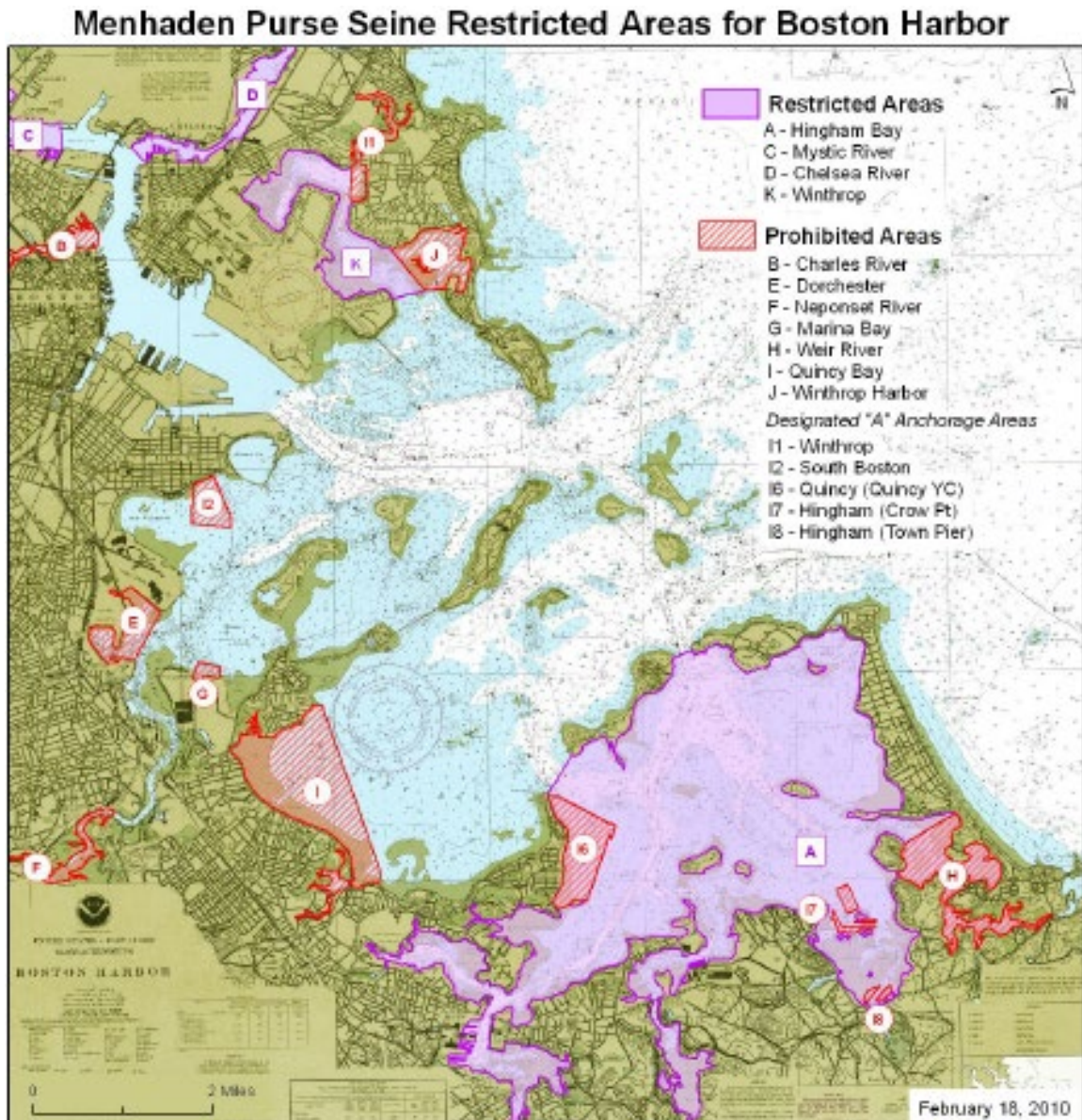


**SPRING COD CONSERVATION ZONE – APR 16 – JUL 21
(322 CMR 8.07)**



MASSACHUSETTS DIVISION OF MARINE FISHERIES
RULES & REGULATIONS SUMMARY
(as of June 1, 2021)

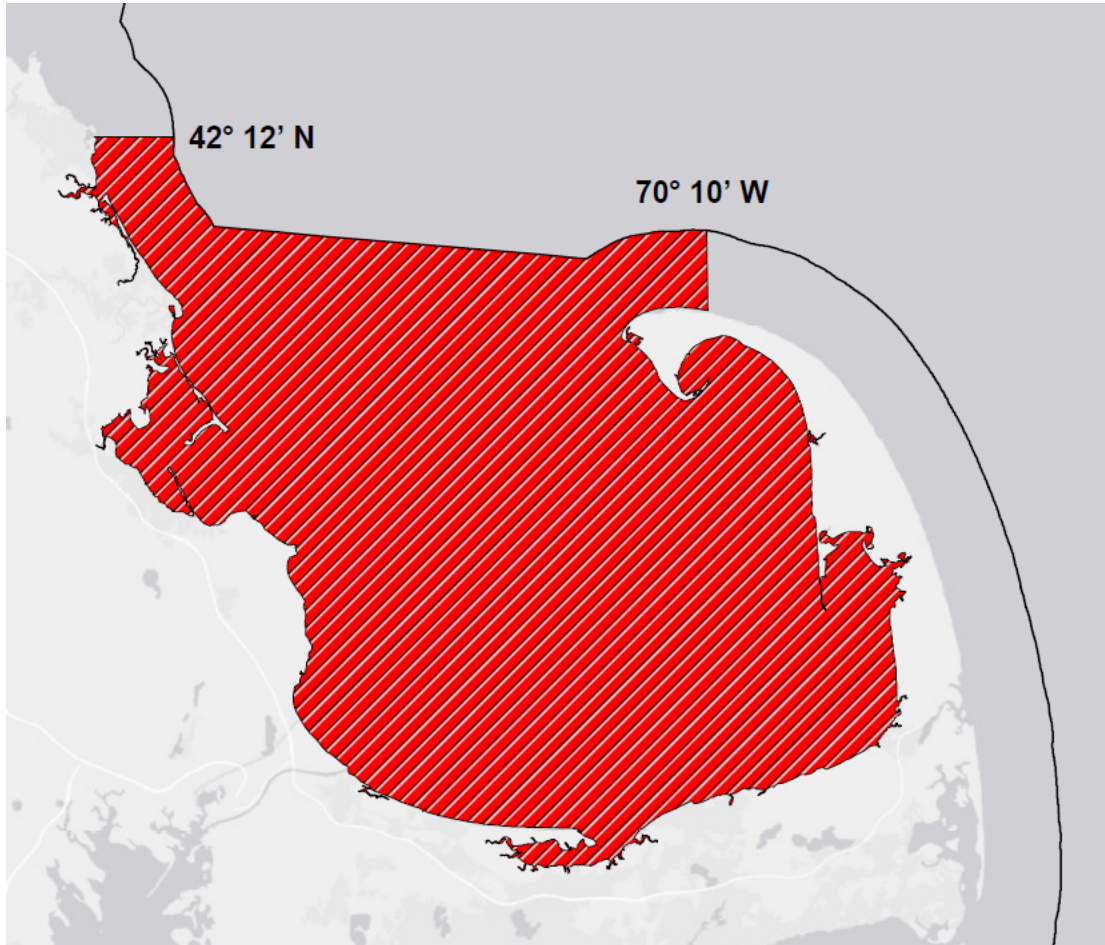
Refer to Chapter 130 and 322 CMR for details.



MASSACHUSETTS DIVISION OF MARINE FISHERIES
RULES & REGULATIONS SUMMARY
(as of June 1, 2021)

Refer to Chapter 130 and 322 CMR for details.

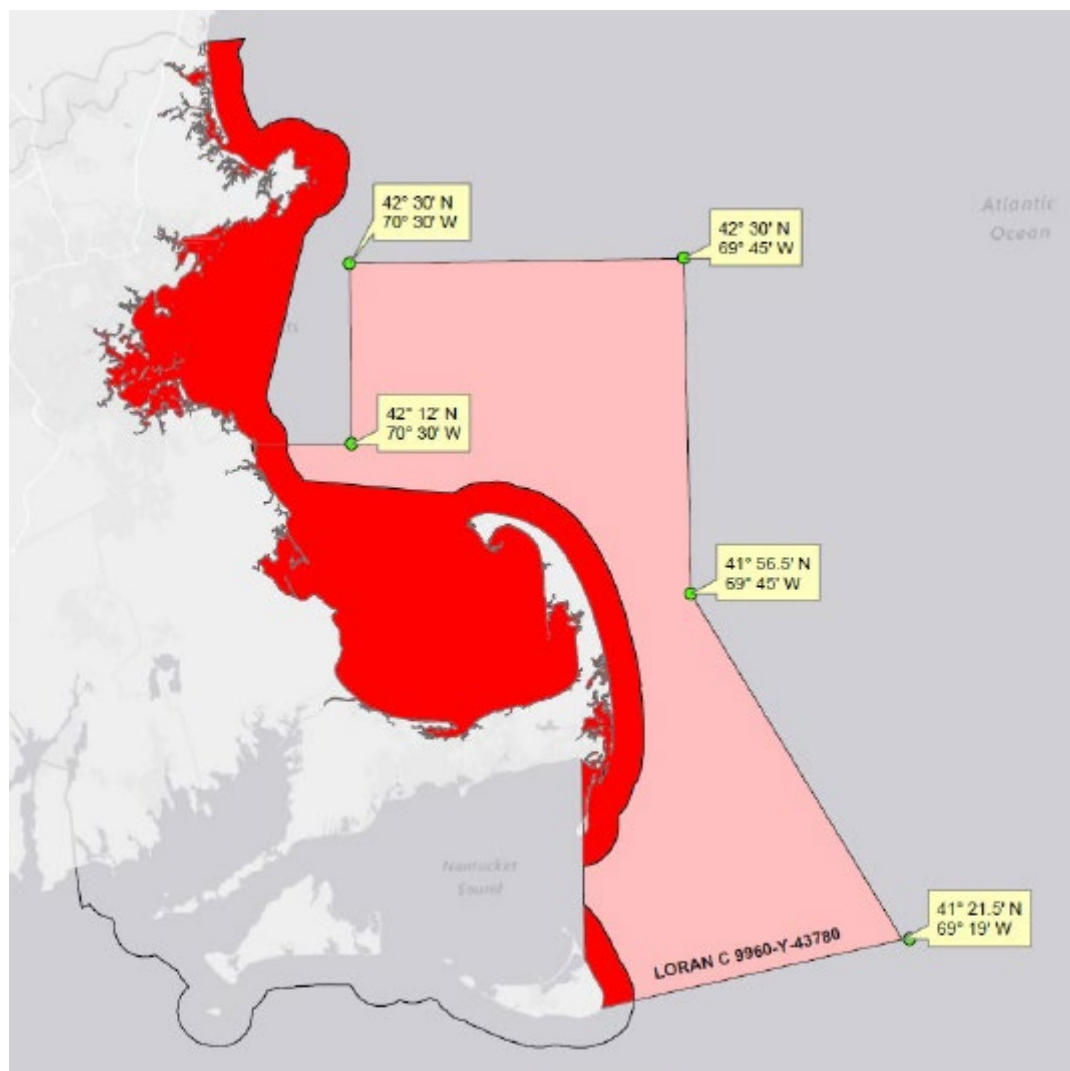
**GILLNET CLOSURE TO PROTECT RIGHT WHALES IN CAPE
COD BAY**



MASSACHUSETTS DIVISION OF MARINE FISHERIES
RULES & REGULATIONS SUMMARY
(as of June 1, 2021)

Refer to Chapter 130 and 322 CMR for details.

LARGE WHALE SEASONAL TRAP GEAR CLOSURE



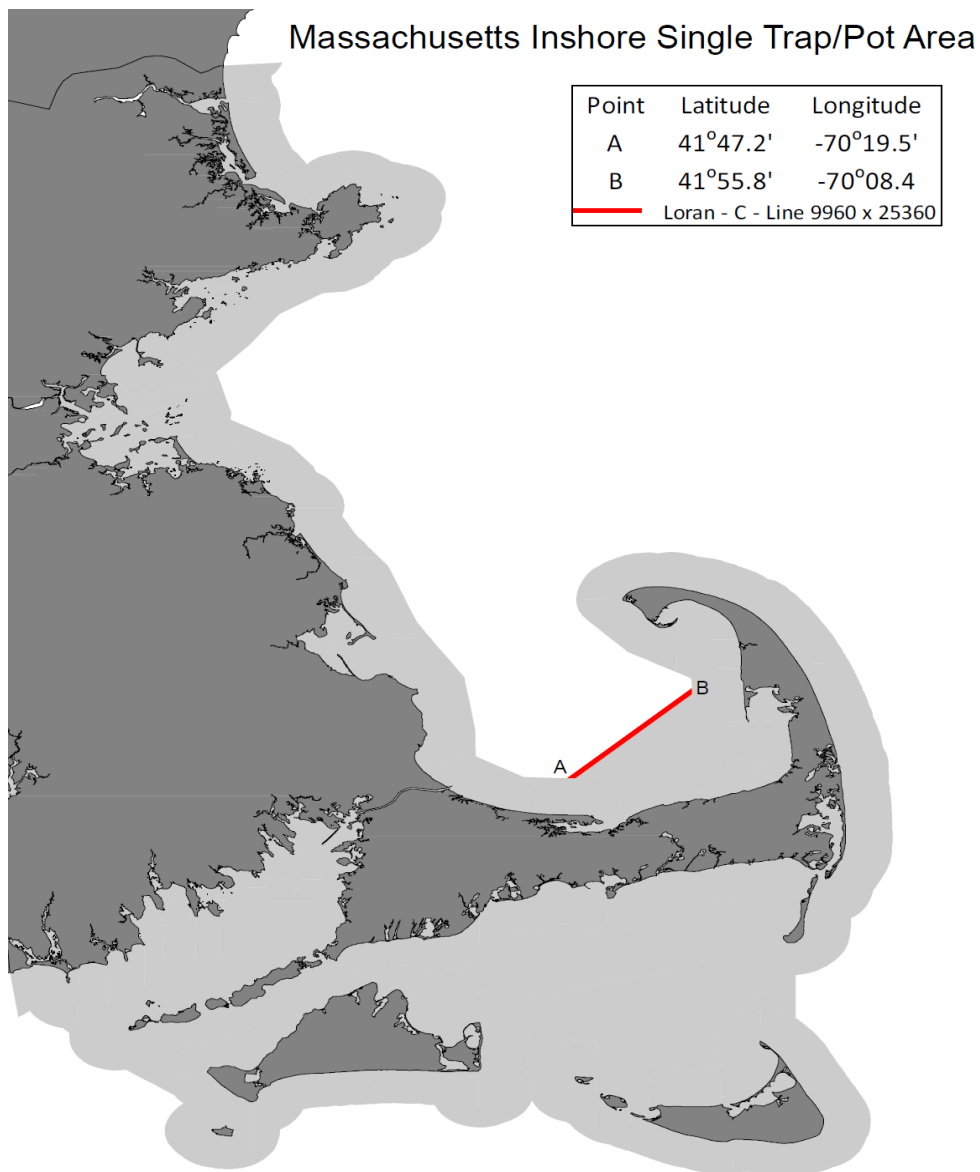
Large Whale Seasonal Commercial Trap Closure
MA Restricted Area (ALWTRP)



MASSACHUSETTS DIVISION OF MARINE FISHERIES
RULES & REGULATIONS SUMMARY
(as of June 1, 2021)

Refer to Chapter 130 and 322 CMR for details.

MA SINGLE TRAP EXEMPTION AREA



MASSACHUSETTS DIVISION OF MARINE FISHERIES
RULES & REGULATIONS SUMMARY
(as of June 1, 2021)

Refer to Chapter 130 and 322 CMR for details.

CAPE COD BAY VESSEL SPEED RESTRICTED AREA

