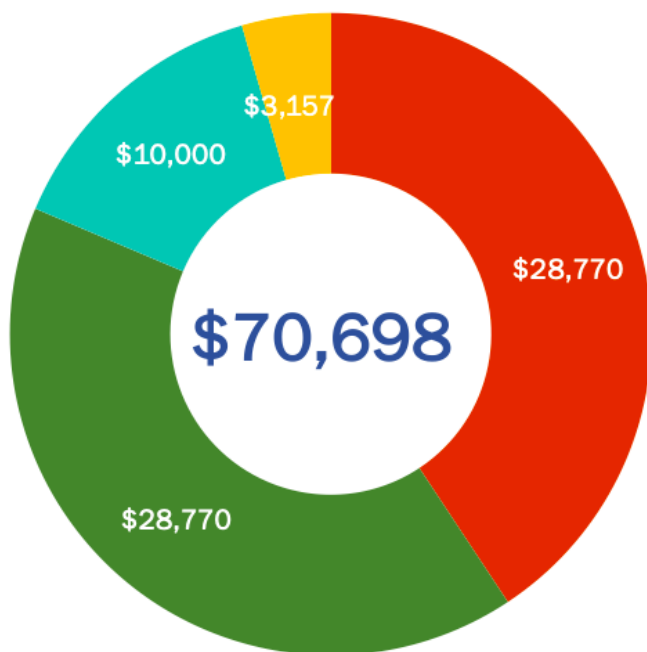


# 2019 Charles E. Shannon Community Safety Initiative PITTSFIELD

Funded Partners | Pittsfield Community Connections, Pittsfield Police Department

Funded by the Executive Office of Public Safety and Security's Office of Grants and Research, the Charles E. Shannon Community Safety Initiative (Shannon) is modeled after the Office of Juvenile Justice and Delinquency Prevention's Comprehensive Gang Model. Shannon is a multi-sector approach used to address a community's gang and youth violence problem. Each community receiving Shannon funding demonstrates the presence of risk factors for youth and gang violence. Shannon participants must be between the ages of 10-24 years.

## FUNDING ALLOCATION



## 87 YOUTH SERVED

**33%**  
LOW-RISK\*

Youth in danger of engaging in risky behavior or gang activity due to the presence of known risk factors such as exposure to gang affiliates in their home or community.

**46%**  
MODERATE-RISK\*

Youth exposed to the same risk factors as low-risk youth, as well as additional risk factors such as school failure, dropping out, truancy, substance abuse, and gang involvement.

**22%**  
HIGH-RISK\*

Youth who are perpetrators or victims of shooting or stabbing violence, and/or are known gang members.

\* % of youth assessed for level of risk.

## STRATEGIES & OUTCOMES

Positive Youth Development & Recreation\*



**6**

Developed Communication Skills/Conflict Resolution Skills

**60**

Developed Healthy Relationships with Peers

Case Management, Street Outreach, or Intervention



**87**

Received Case Management Services

**20**

Referred to Education, Employment or Mental Health Services

**87**

Received Street Outreach Services

**36**

Safety Plans Developed by Outreach Workers

Suppression



**192**

Overtime Hours Spent on Hot Spot Patrols

**32**

Hot Spot Patrols Completed

Community Mobilization



**160**

People Attended Events, Meetings, & Presentations

**18**

Community Events, Meetings, & Presentations Held

\* Positive Youth Development refers to intentional efforts to provide opportunities for youth to enhance their interest, skills, and abilities.

# Community Risk Factors

## MASSACHUSETTS

6,892,503

10.0%

2.94%

1,007,005

32.8%

1.9%

Total Population  
(2018 Estimate)

Population Lives in Poverty

Unemployment Rate

Total School Population  
(2018-2019)

Economically Disadvantaged

High School Dropout Rate

## PITTSFIELD

42,533

14.6%

3.84%

6,236

53.7%

2.1%

Sources: [www.census.gov/quickfacts](http://www.census.gov/quickfacts); [profiles.doe.mass.edu/](http://profiles.doe.mass.edu/); [www.mass.gov/lwd/economic-data/](http://www.mass.gov/lwd/economic-data/)

## Gang Activity in Pittsfield

30+

Street Gangs

50-75

Gang Members  
Under 25 Years Old

In 2019 there has been a continuous increase in youth gang activity that has impacted the middle and high schools in the city. Multiple incidents have occurred where youth gangs were using BB guns and sheer numbers to intimidate and assault others. Groups of youth, that include those in youth gangs, have been assembling and causing disturbances at public events. Most gangs in the area distribute narcotics which are their main source of income. This has also led to the youth gangs and its members to become involved. Adult gang members or associates have been utilizing youth to carry firearms for them, distribute narcotics and resupply distribution locations. Additionally, there has been a continuous number of referrals to youth services for individuals ranging from 10-24 years of age.

## 5-Year Crime Trends for Young People Ages 10-24, 2015-2019

### MASSACHUSETTS SIMPLE ASSAULT

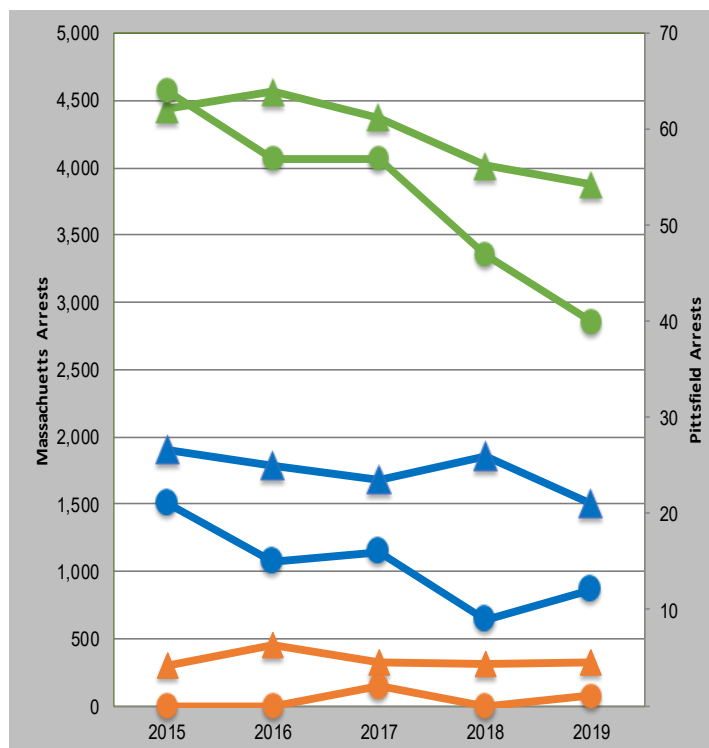
Simple assault arrests  
declined by 12.7% since  
2015 (563 arrests)

### MASSACHUSETTS AGGRAVATED ASSAULT

Aggravated assault arrests  
declined by 20.6% since  
2015 (391 arrests)

### MASSACHUSETTS ROBBERY

Robbery arrests declined by  
10% since 2015 (30 arrests)



### PITTSFIELD SIMPLE ASSAULT

Simple assault arrests  
declined by 37.5% since  
2015 (24 arrests)

### PITTSFIELD AGGRAVATED ASSAULT

Aggravated assault arrests  
decreased by 42.9% since  
2015 (9 arrests)

### PITTSFIELD ROBBERY

Robbery arrests increased by  
by 1 arrest since 2015 (100%)