



Drought Management Task Force Update

08.12.20

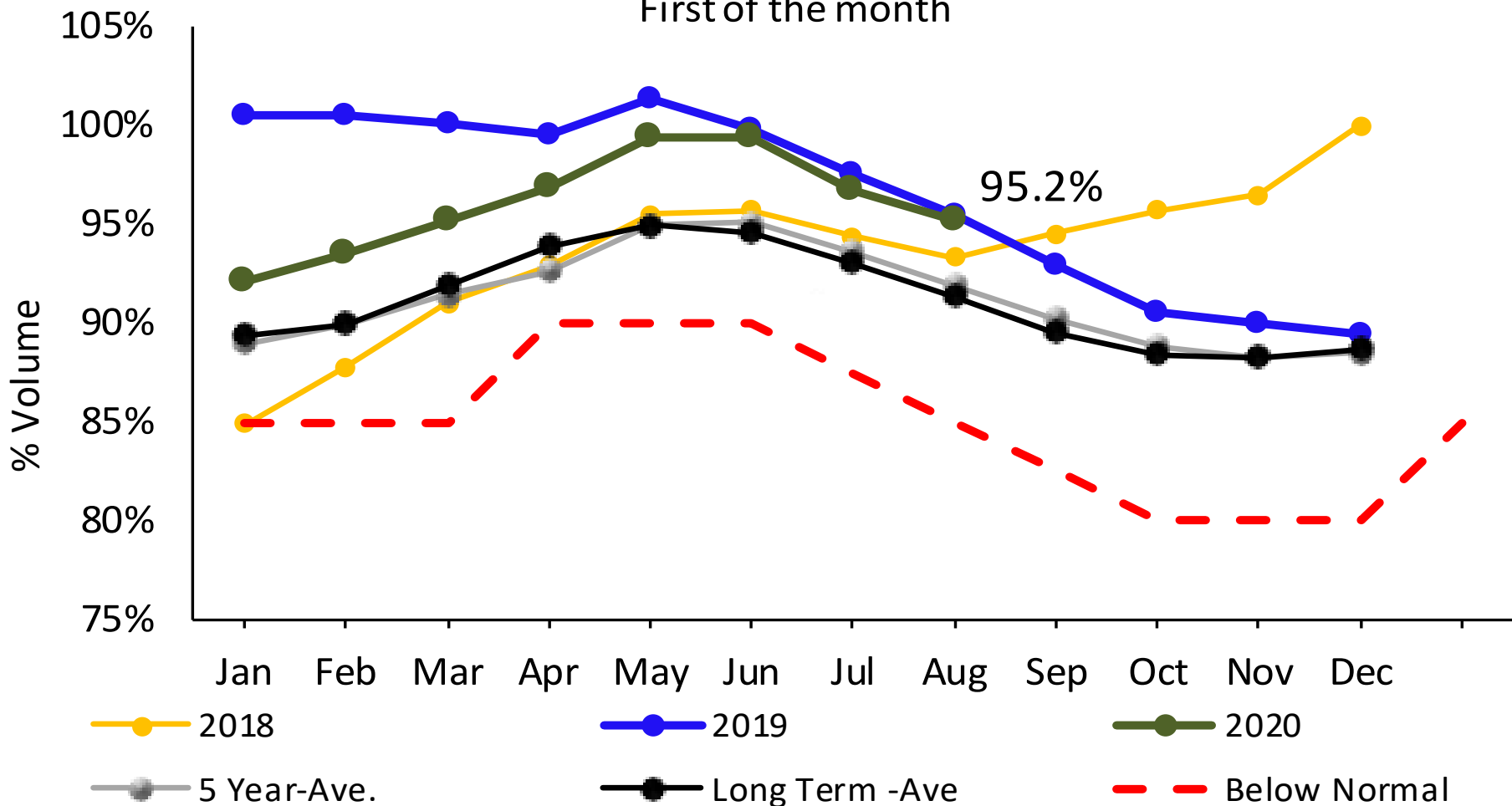
John Gregoire, Program Manager, Reservoir Operations



Quabbin Reservoir

Quabbin Reservoir Volume

First of the month

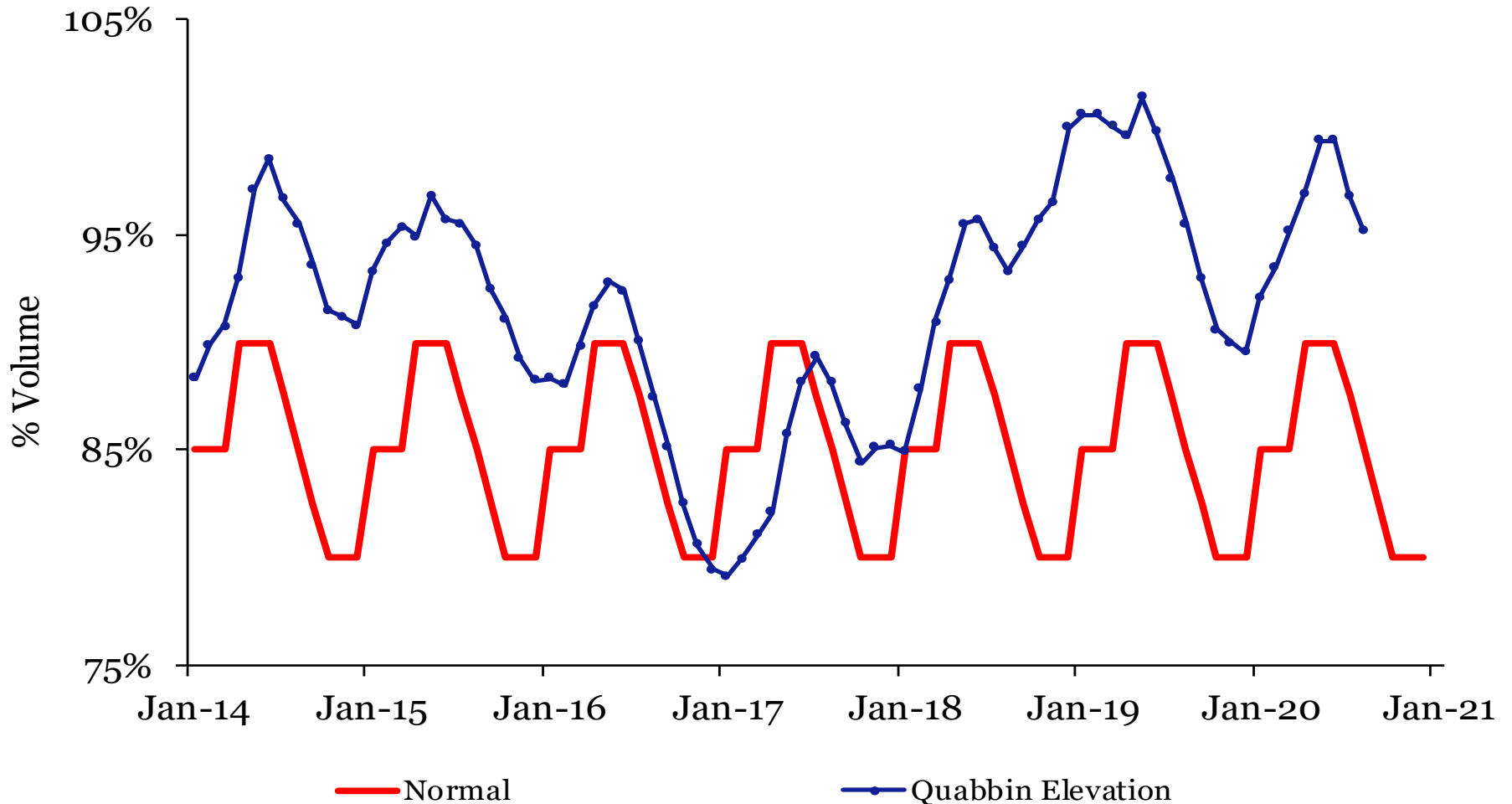




Quabbin Reservoir

Date	Elevation	Volume	% Volume
8/7/20	527.23	390,848	94.8%
7/7/20	528.18	398,086	96.6%
Totals	-0.95	-7,238	-1.8%

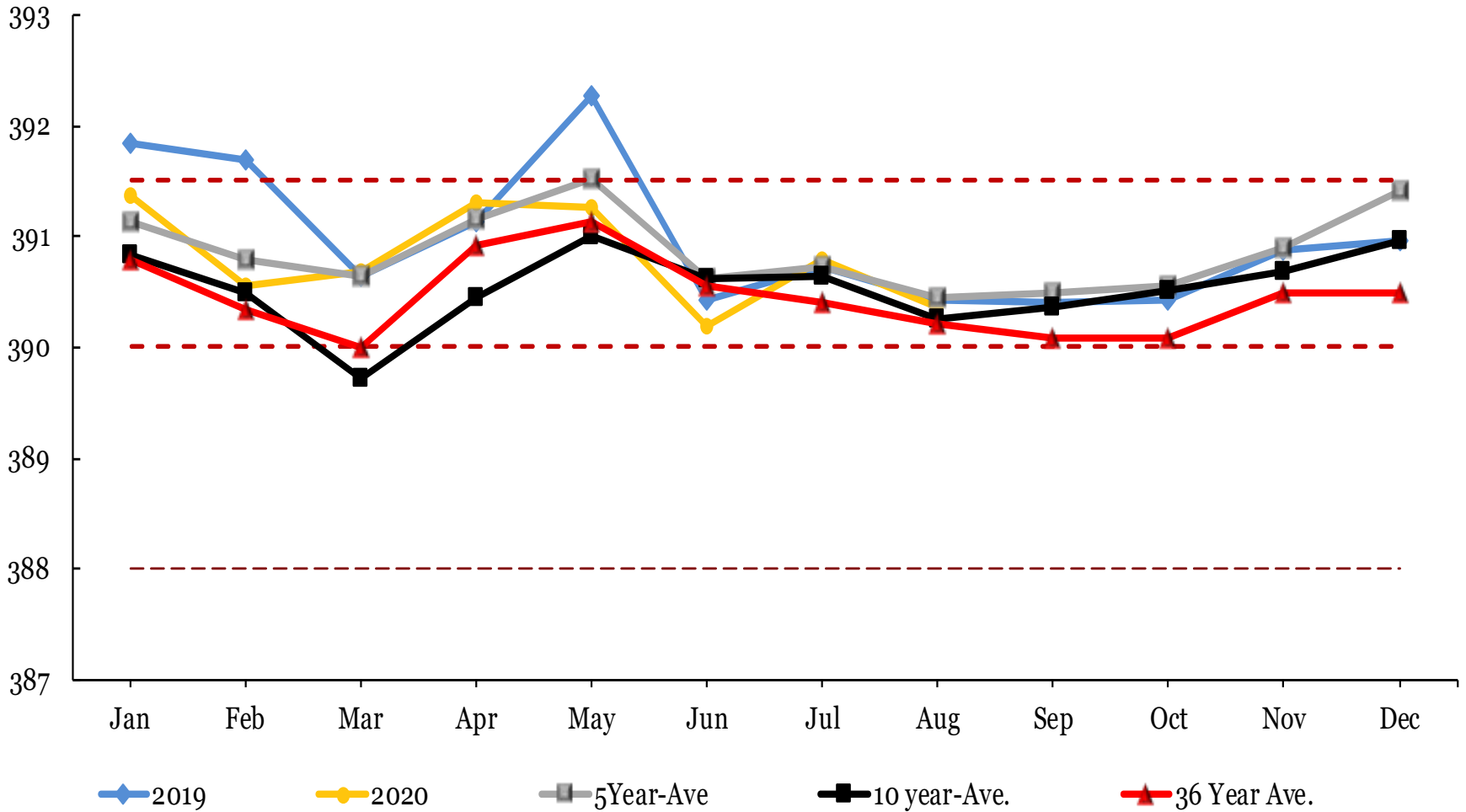
Quabbin Reservoir Volume First of the Month





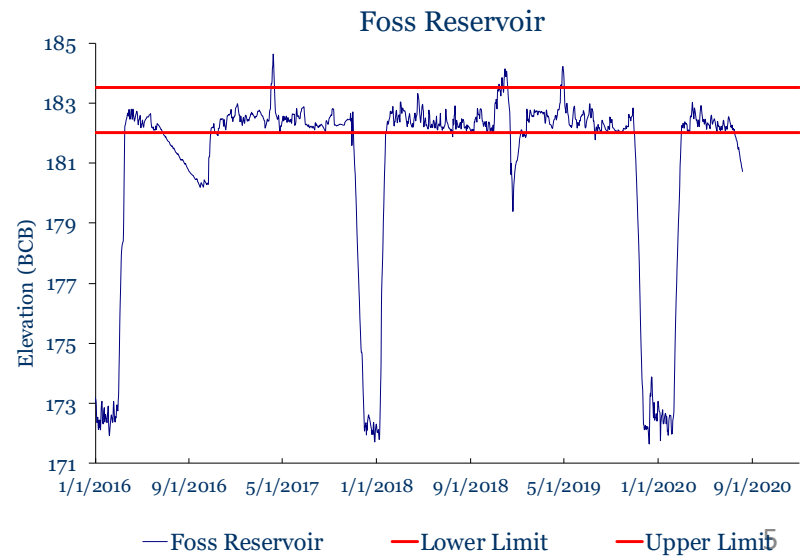
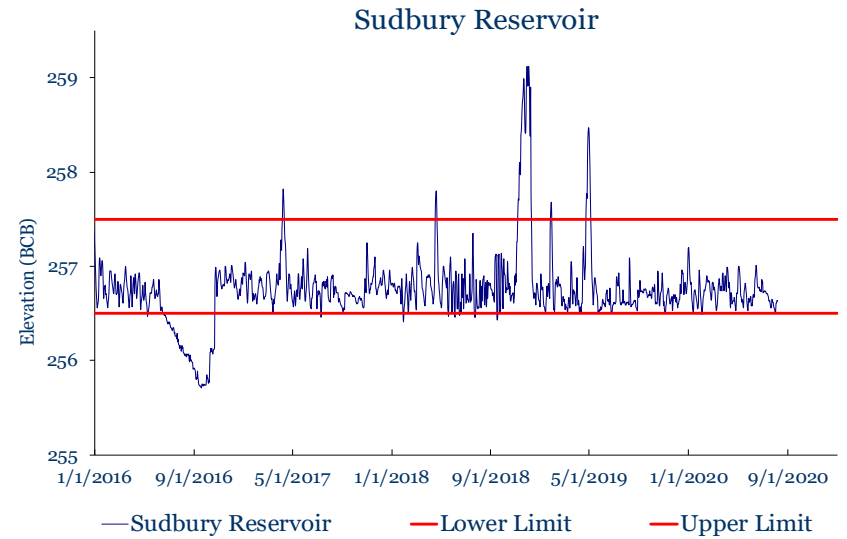
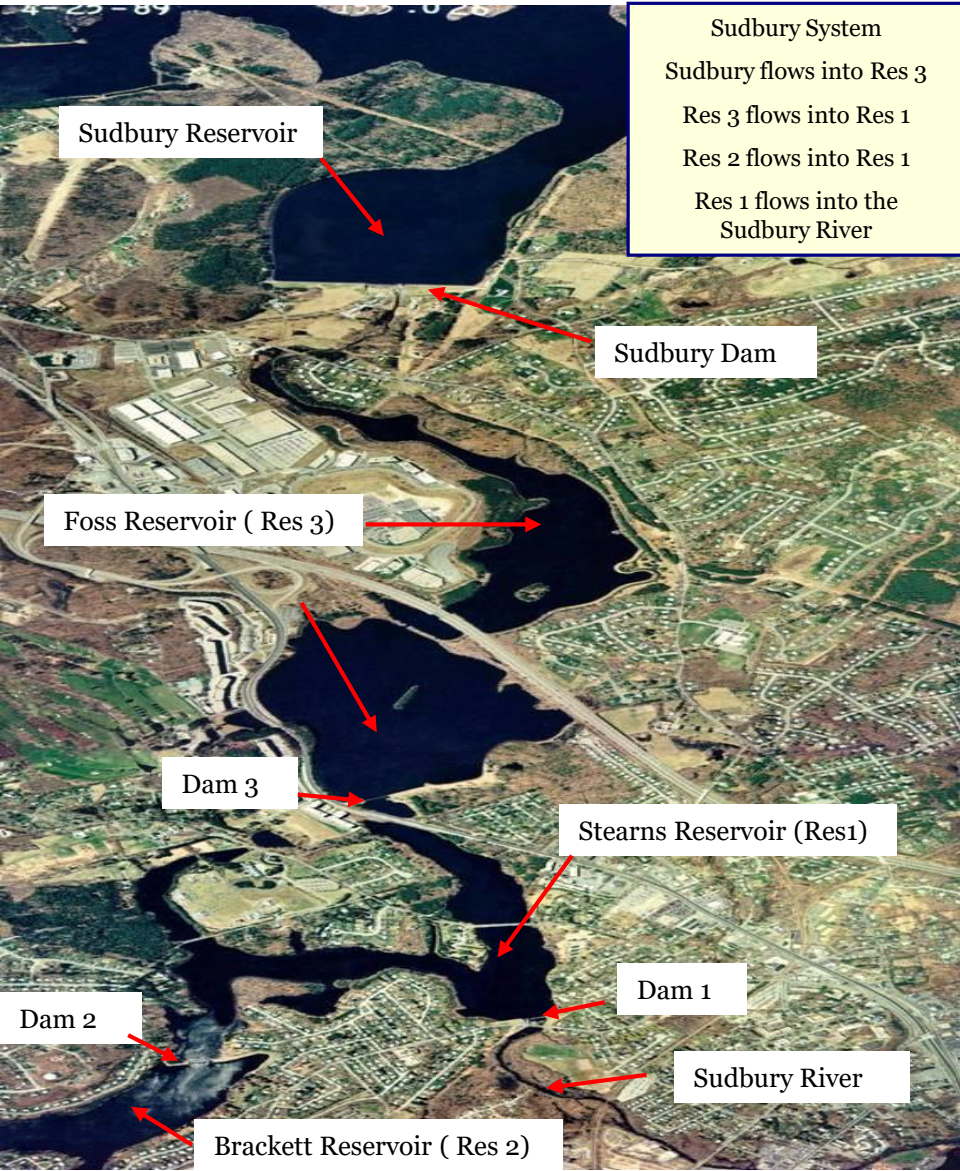
Wachusett Reservoir

Wachusett Reservoir Elevation





Sudbury & Foss Reservoirs





Messaging

- The MWRA system is well situated to withstand drought.
- Currently, MWRA's reservoirs are nearly full and well within their Normal Operating Range.
- No mandatory water use restrictions are required by MWRA fully-supplied communities. (Partially supplied communities may have DEP Water Management Act restrictions that they need to follow.)
- Last month MWRA reminded consumers that while there are no water use restrictions, they should continue to use water wisely.
- We recommend acknowledging the distinction for MWRA fully-served communities in all drought related public outreach and press.