



## Drought Management Task Force Update

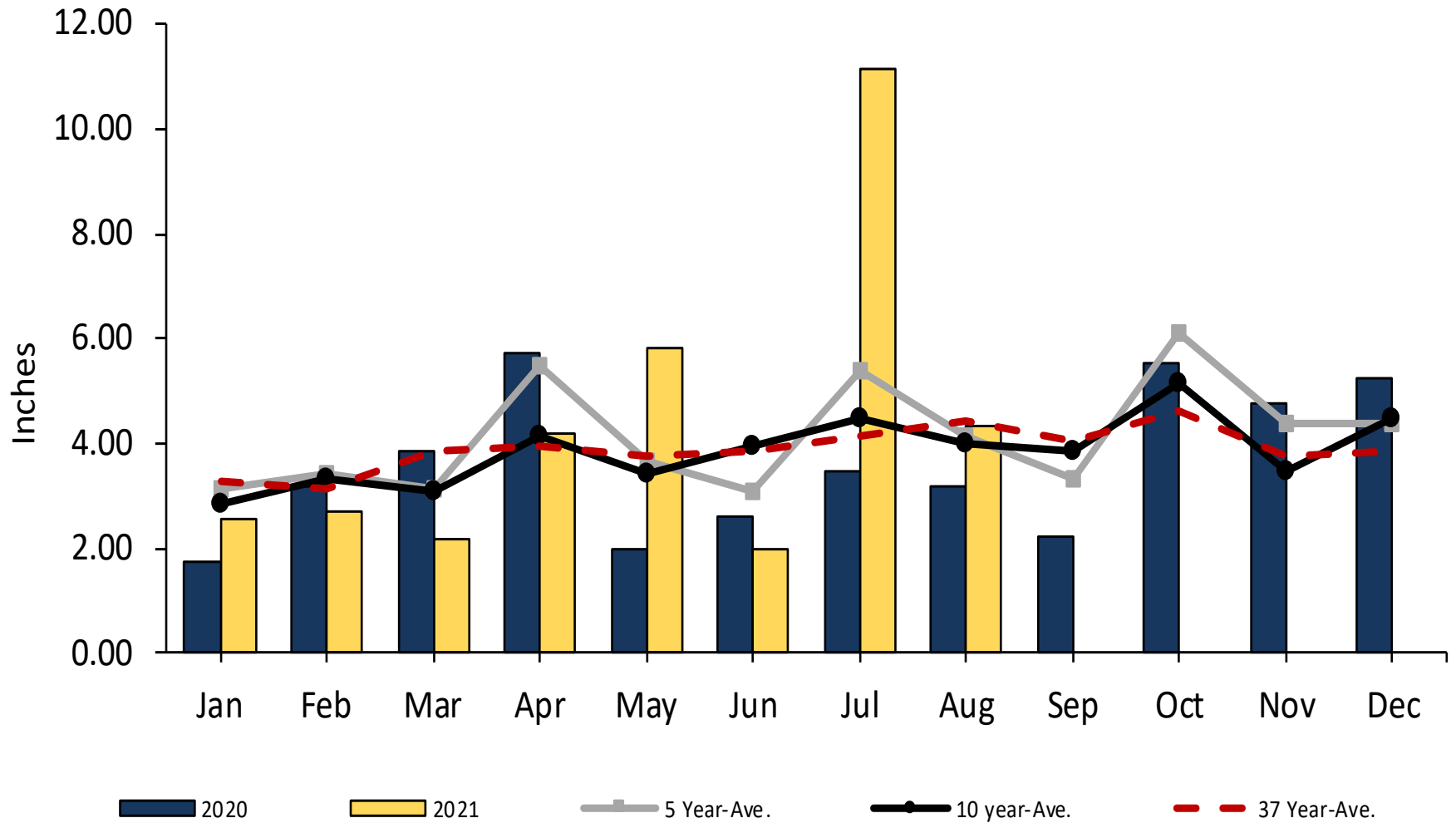
09.08.21

John Gregoire, Program Manager, Reservoir Operations



# Precipitation

## Precipitation

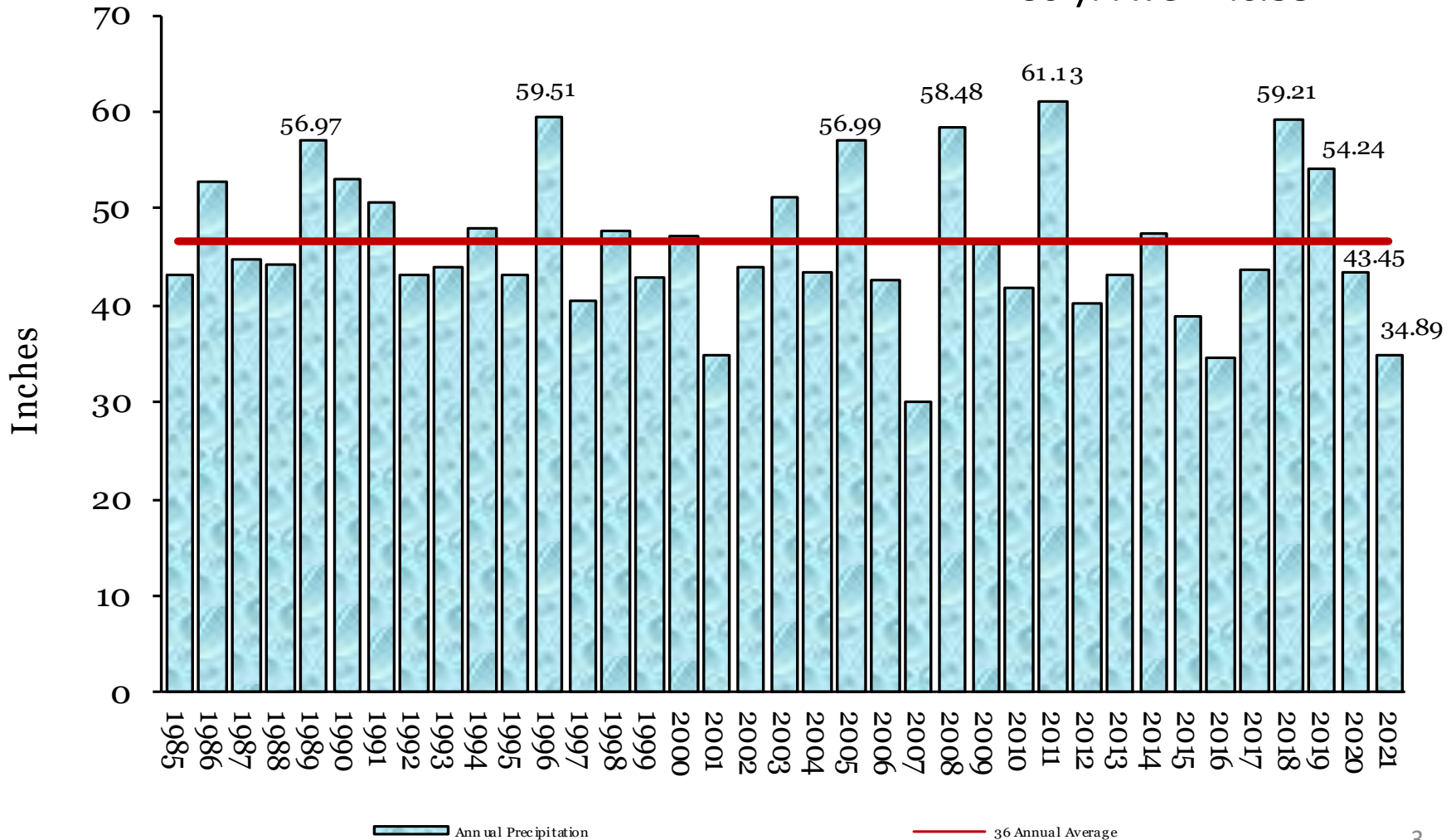




# Precipitation

## Annual Precipitation 1985-2020

36 yr Ave = 46.58"

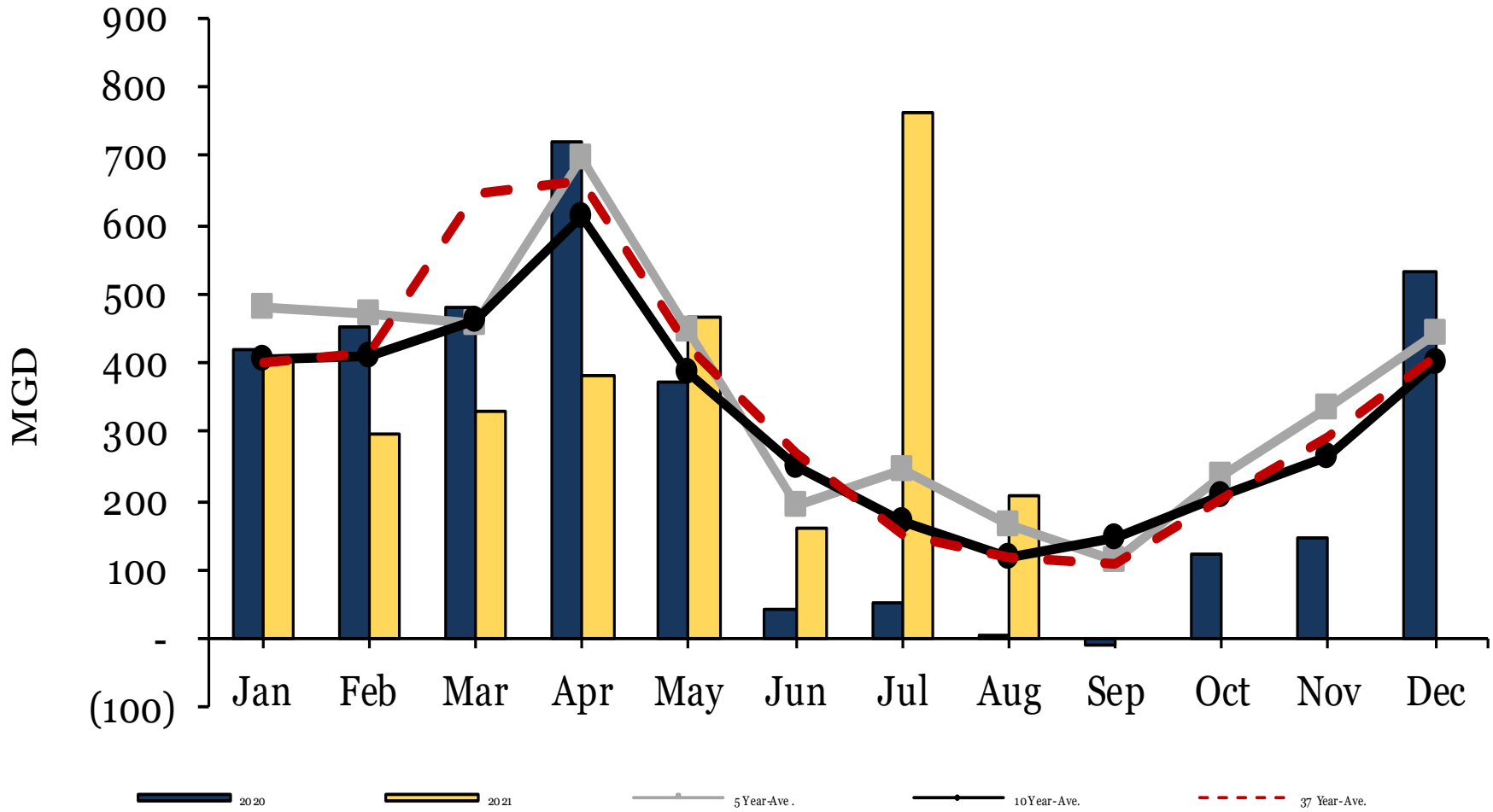




# Yield

**System Yield** is defined as the water produced by its sources, and is reported as the net change in water available for water supply and operating requirements.

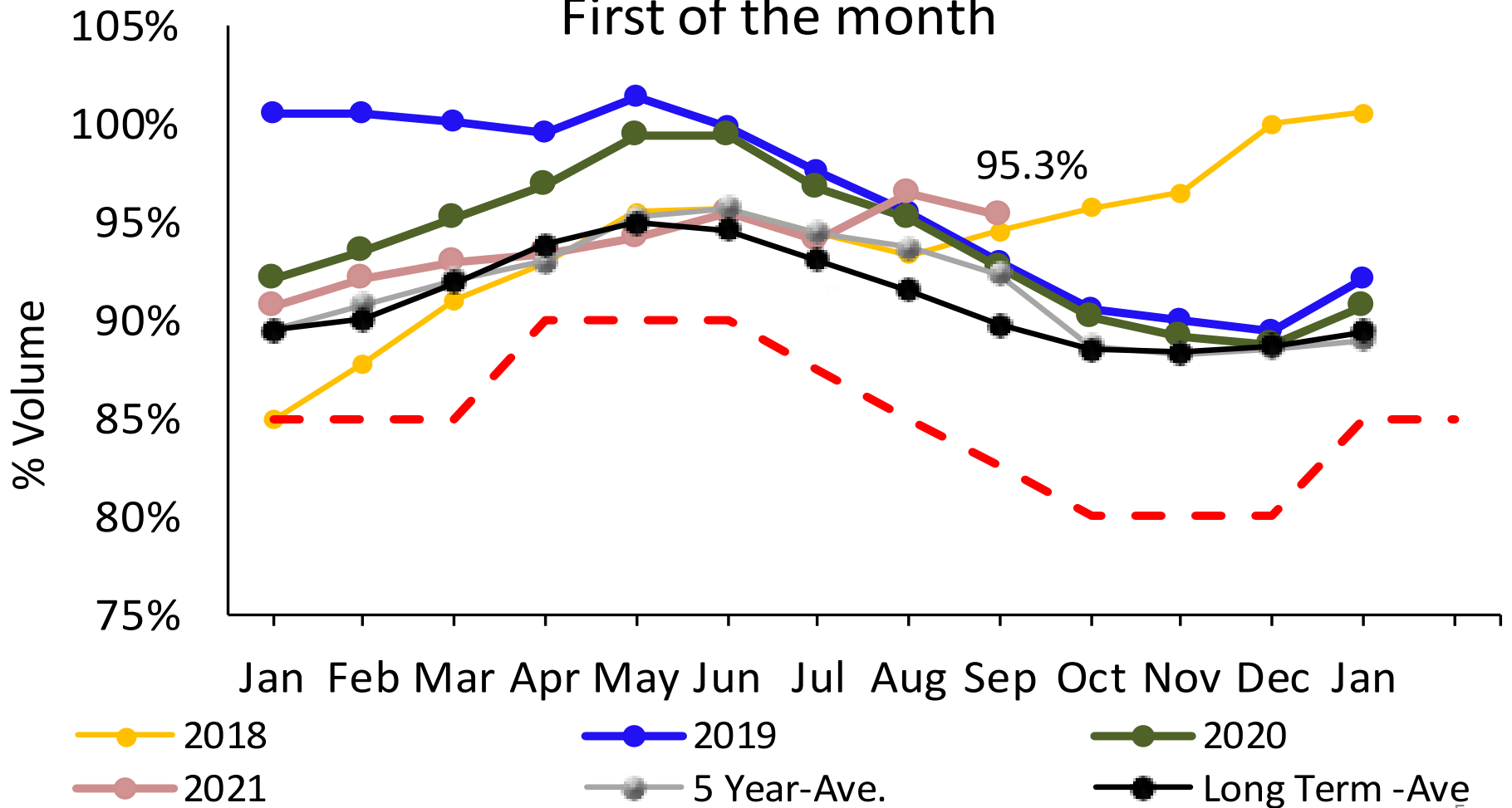
## System Yield





# Quabbin Reservoir

## Quabbin Reservoir Volume First of the month

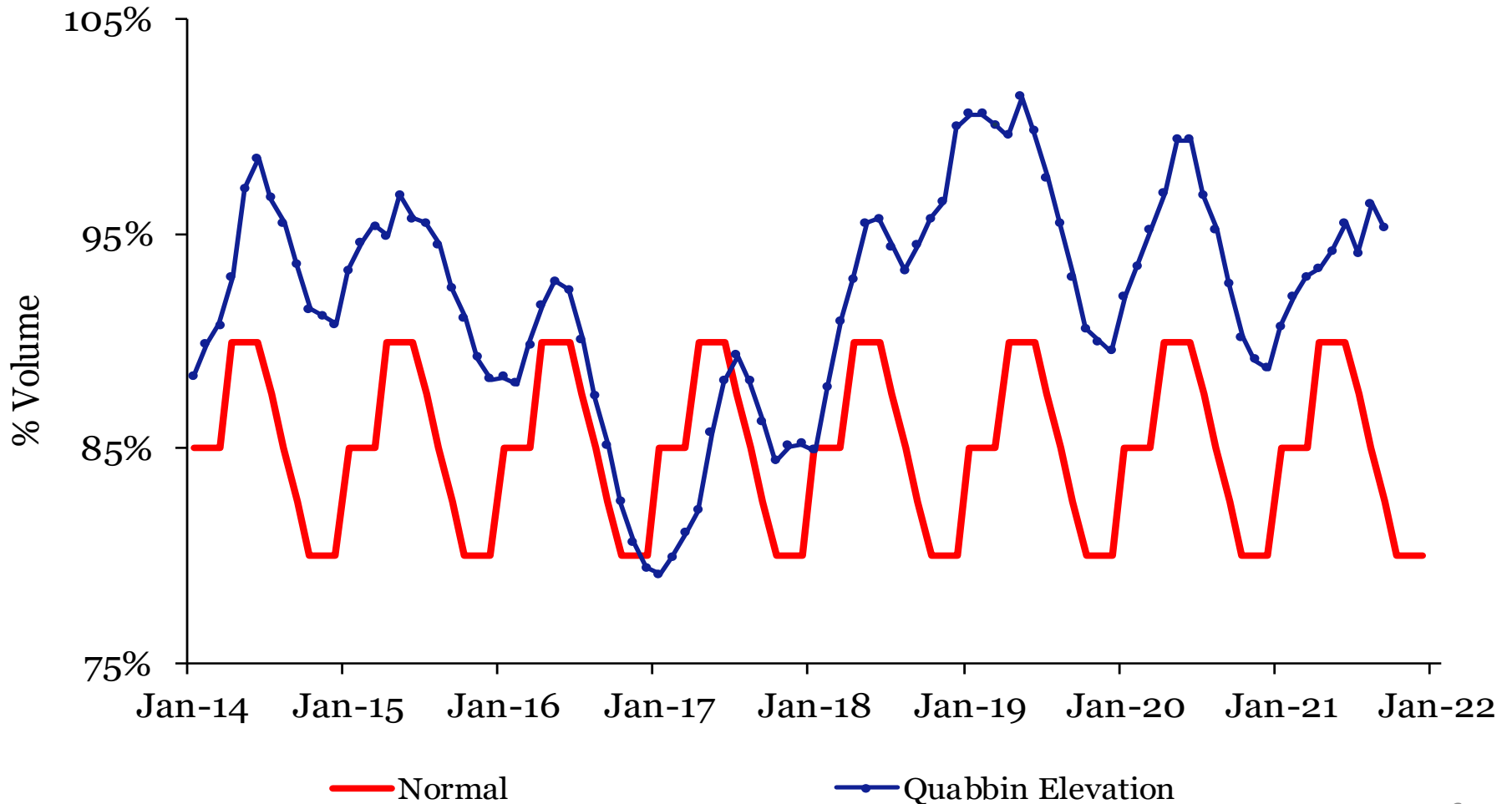




# Quabbin Reservoir

Date	Elevation	Volume	% Volume
9/7/21	527.88	395,788	96.0%
8/4/21	528.04	397,008	96.3%
Totals	-0.16	-1,220	-0.3%

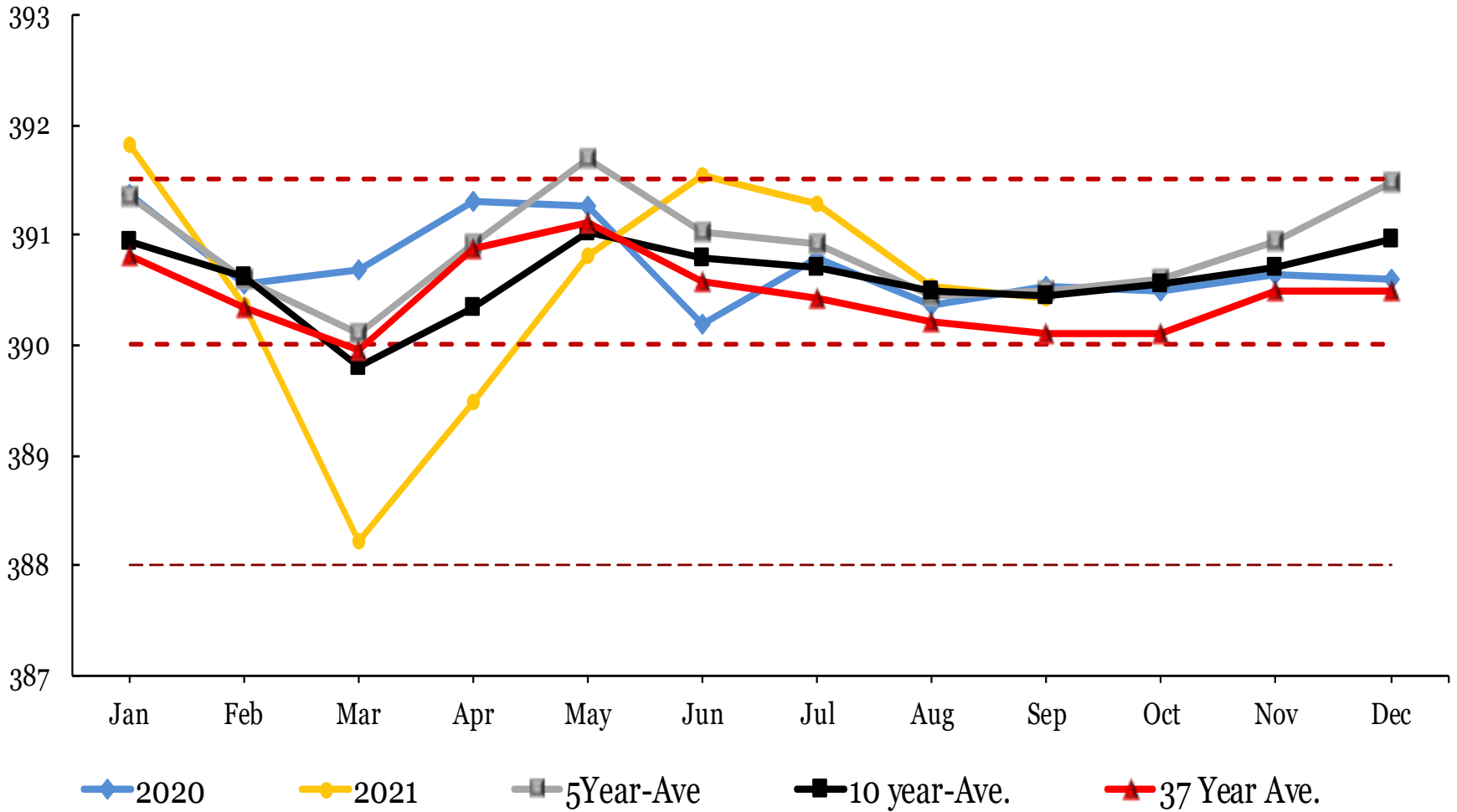
## Quabbin Reservoir Volume First of the Month





# Wachusett Reservoir

## Wachusett Reservoir Elevation





# Sudbury & Foss Reservoirs

