



Drought Management Task Force Update

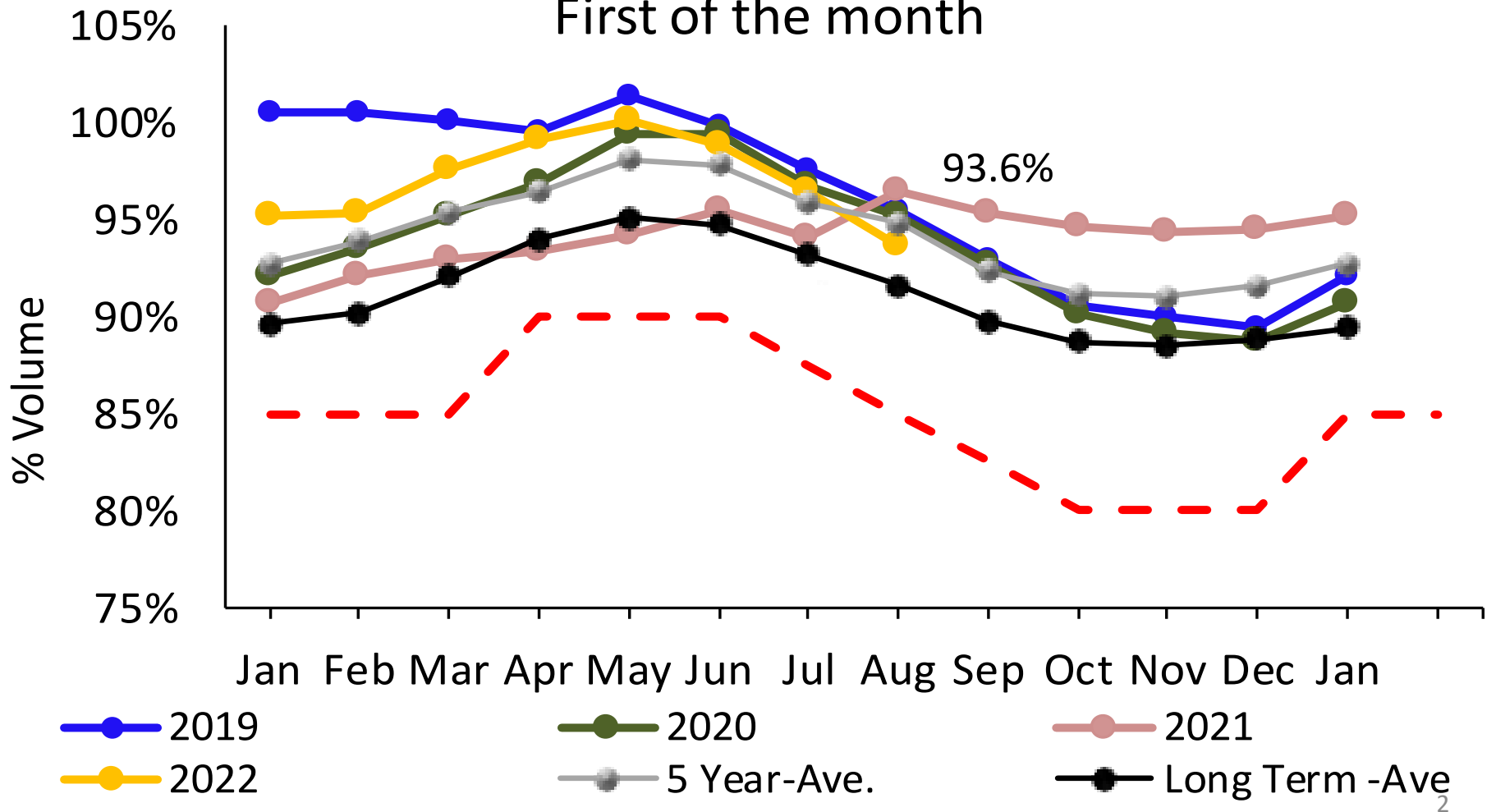
08.08.22

John Gregoire, Program Manager, Reservoir Operations



Quabbin Reservoir

Quabbin Reservoir Volume First of the month

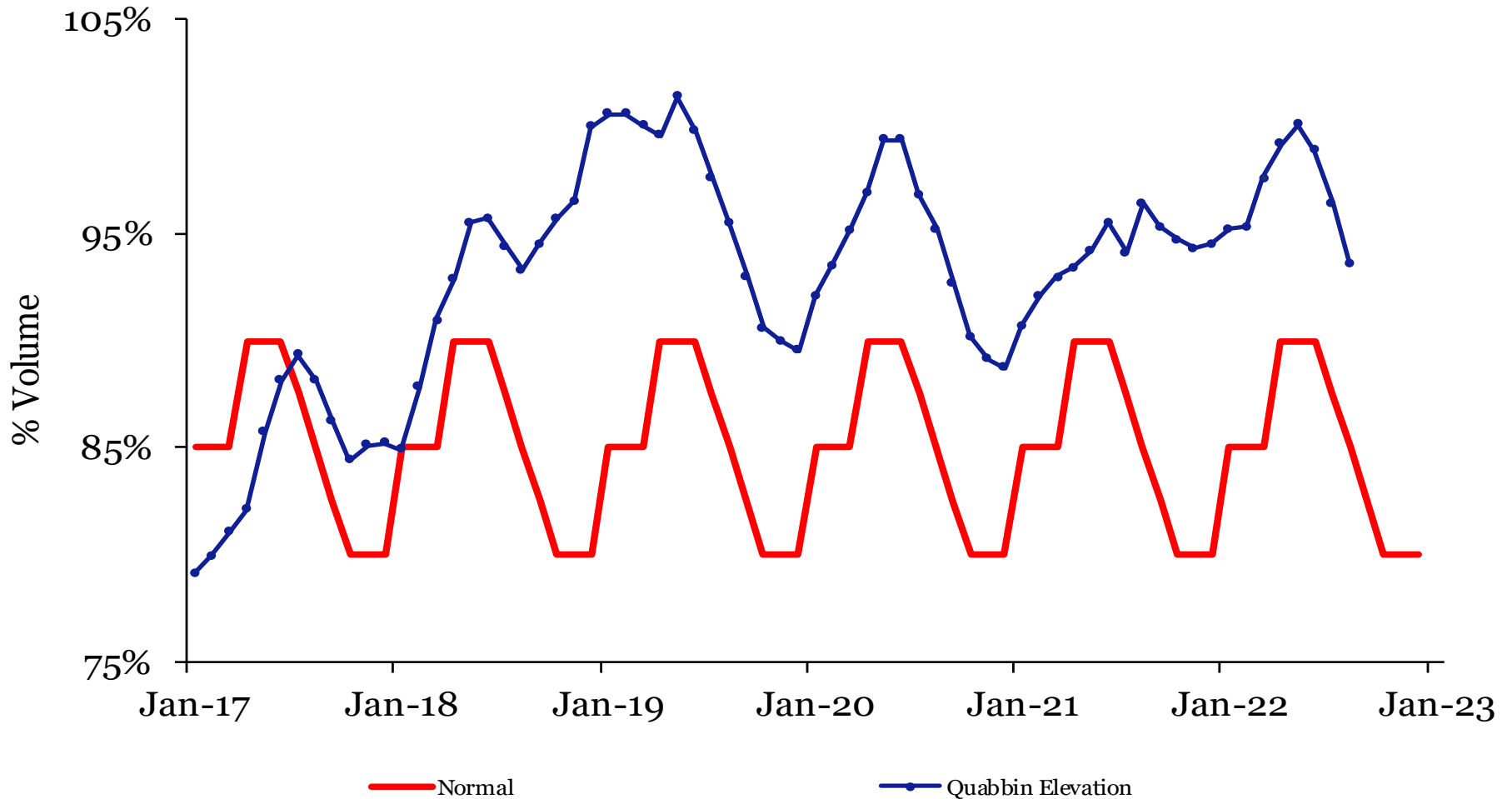




Quabbin Reservoir

Date	Elevation	Volume	% Volume
8/4/22	526.39	384,525	93.3%
7/20/22	527.30	391,380	94.9%
Totals	-0.91	-6,855	-1.7%

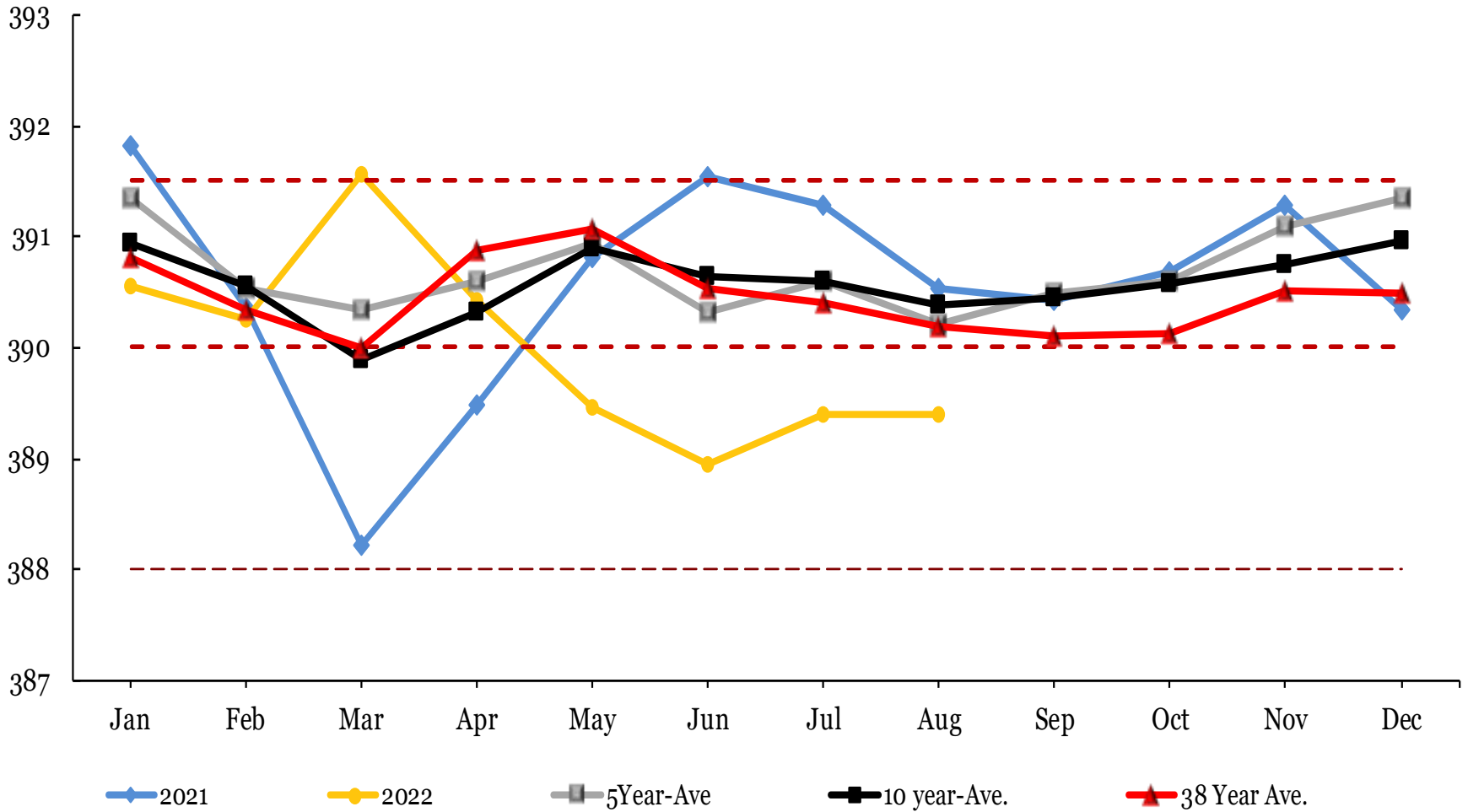
Quabbin Reservoir Volume First of the Month





Wachusett Reservoir

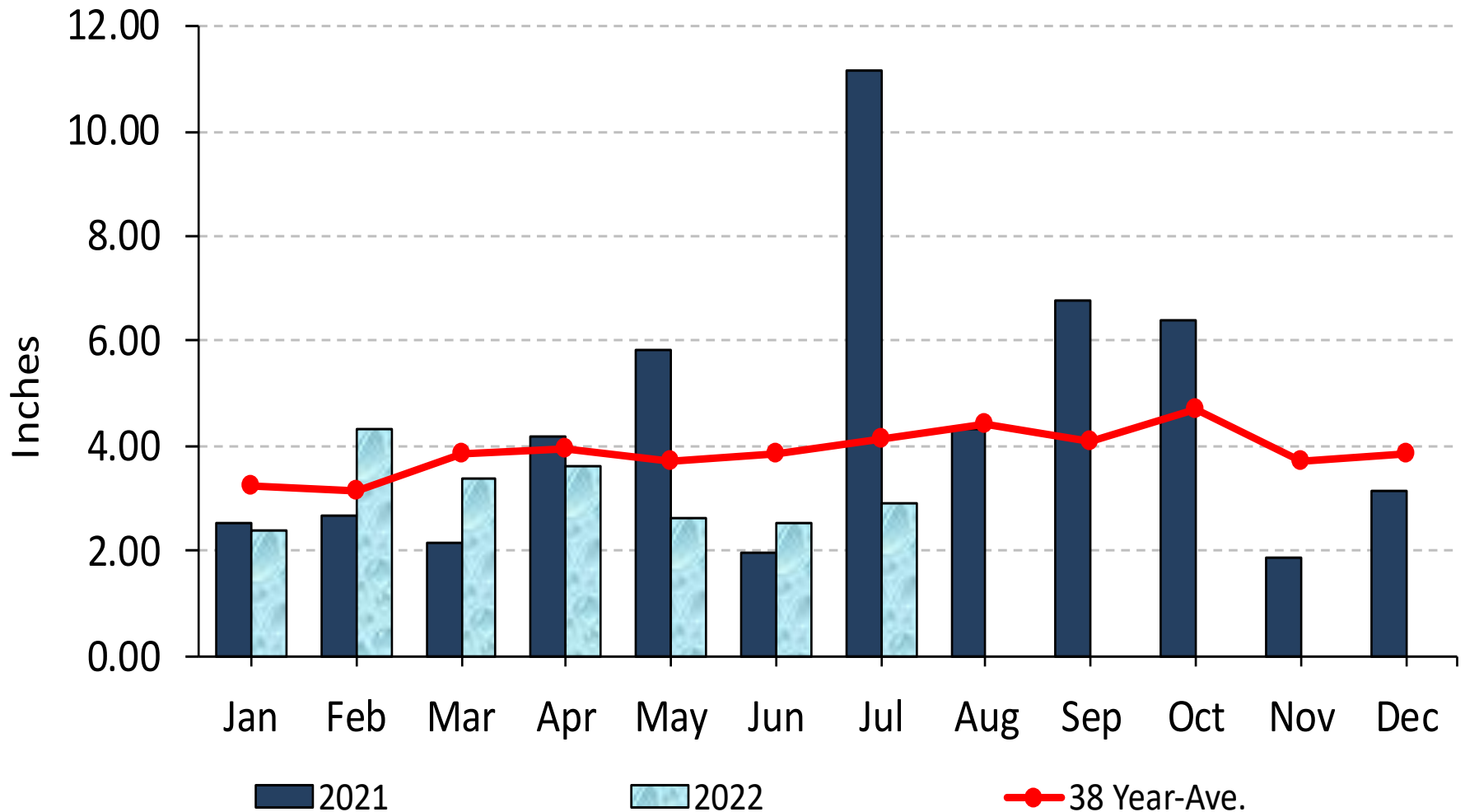
Wachusett Reservoir Elevation





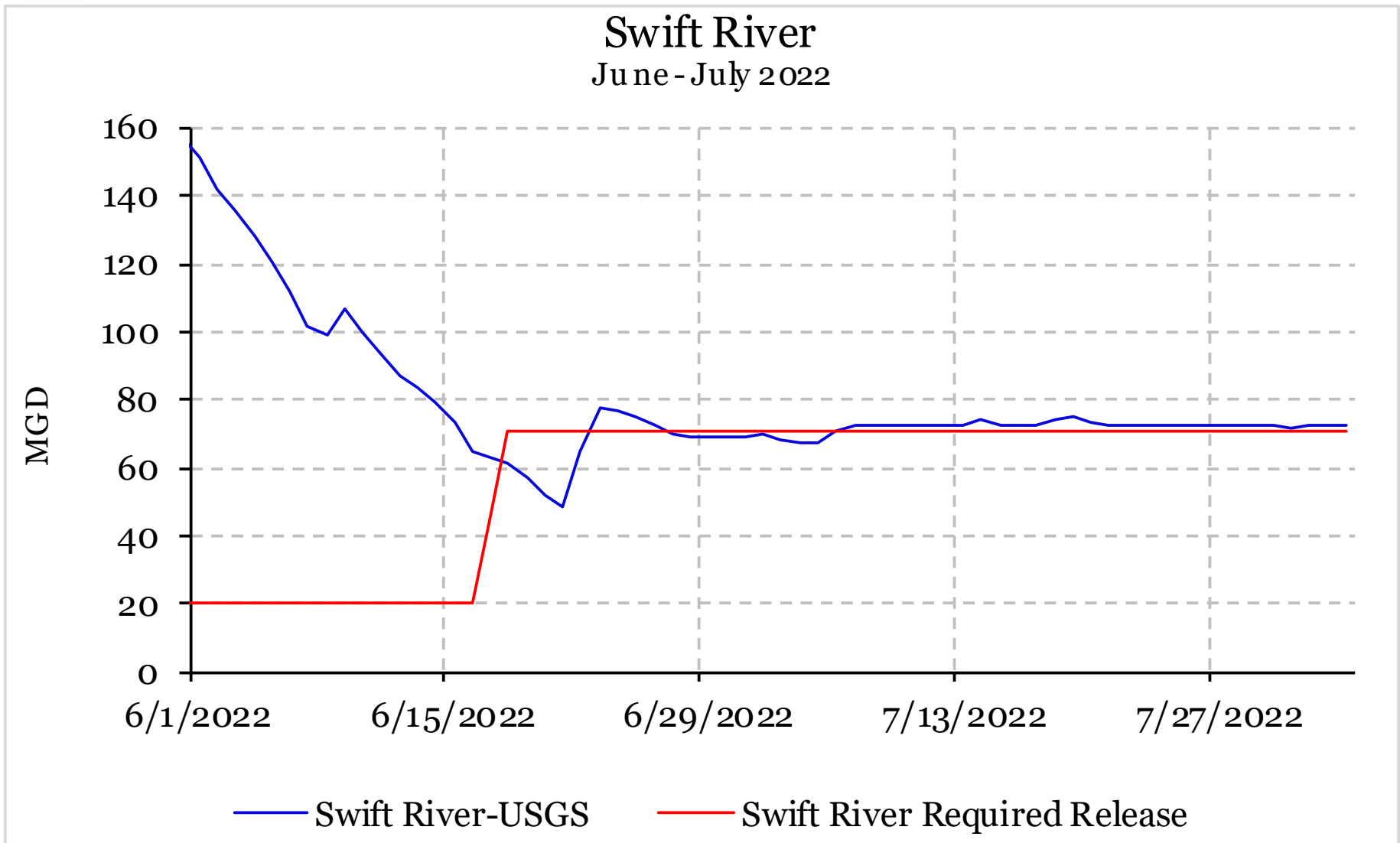
Precipitation * Combined Watersheds*

Precipitation



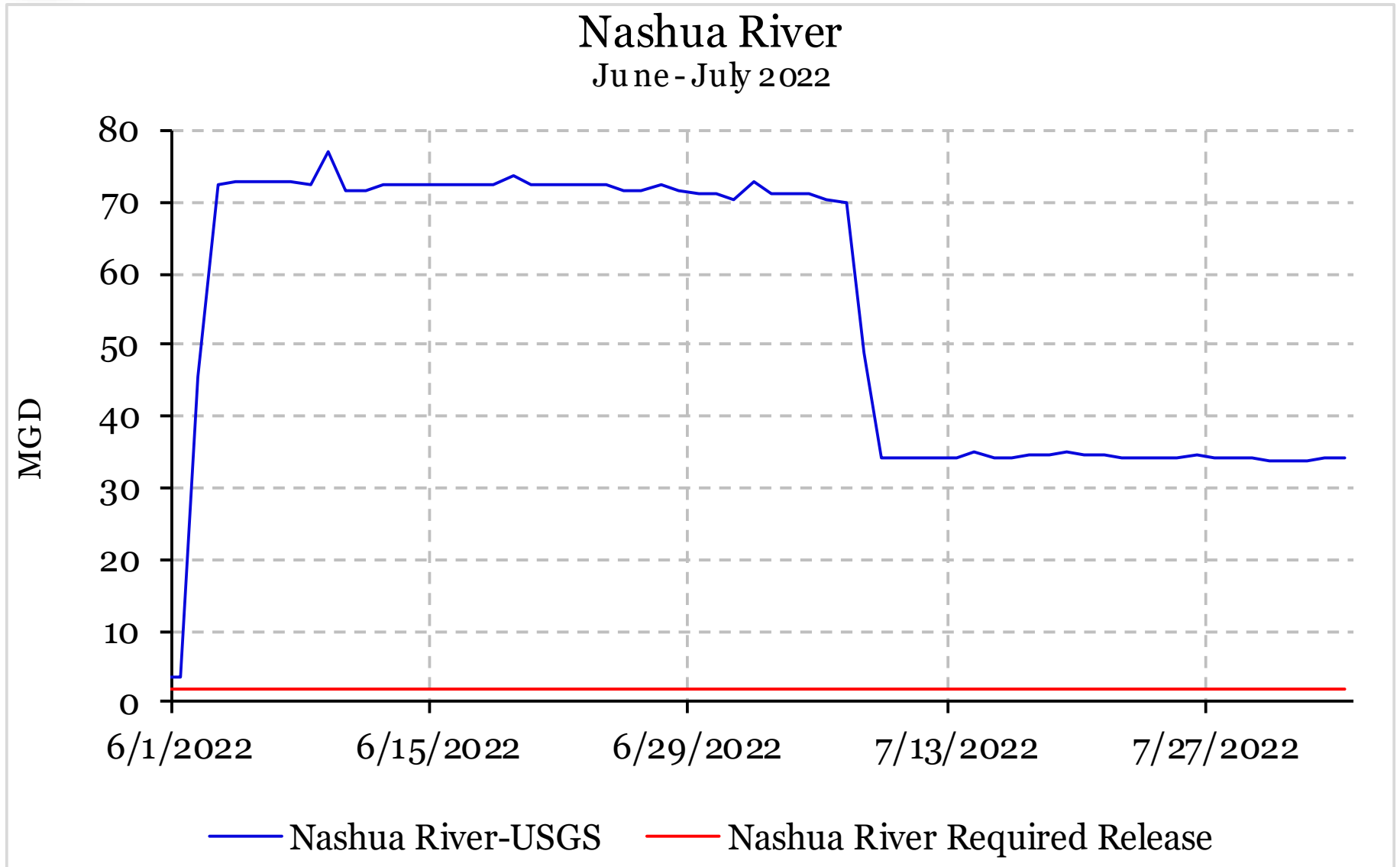


Swift & Nashua River





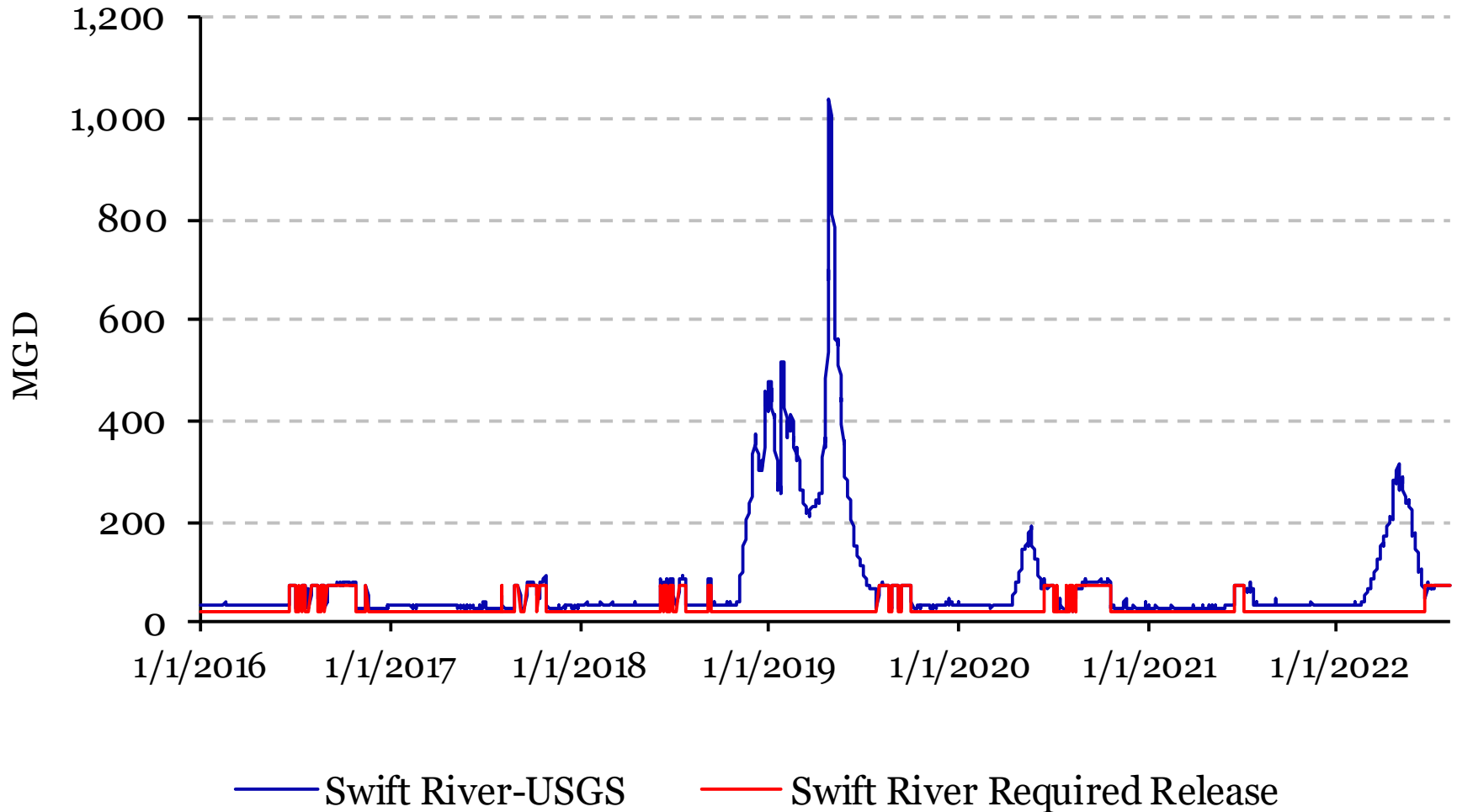
Swift & Nashua River





Swift & Nashua River

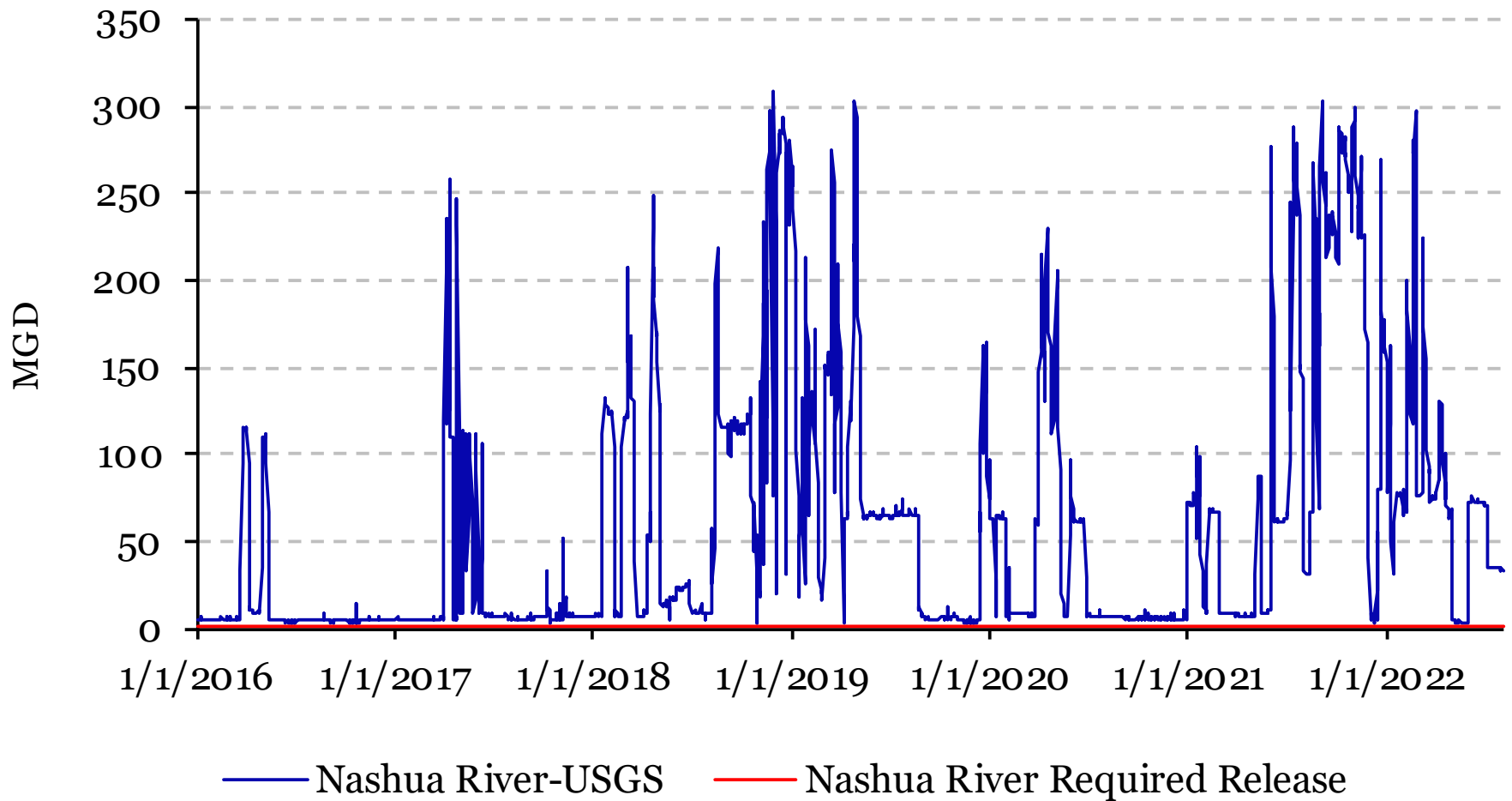
Swift River
Jan. 2016 - July 2022





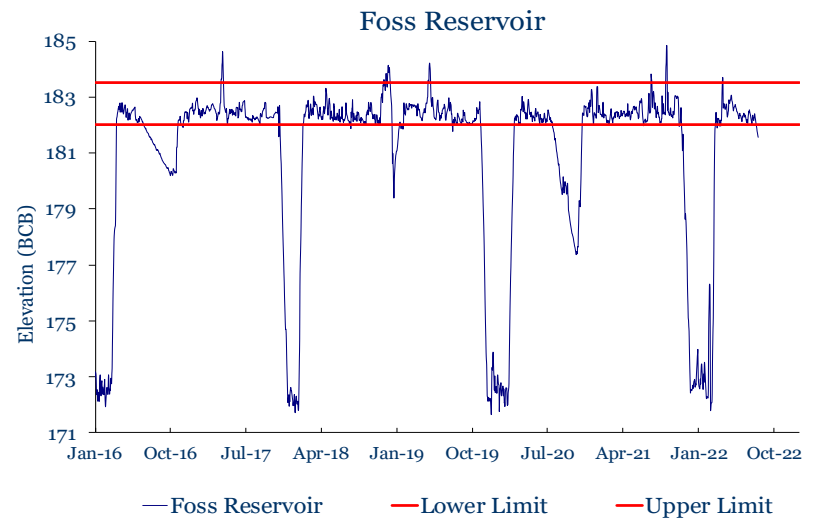
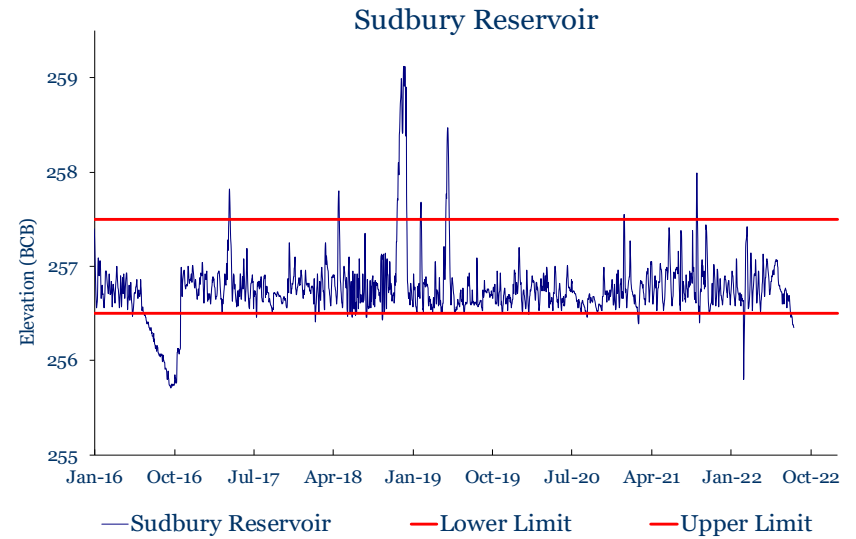
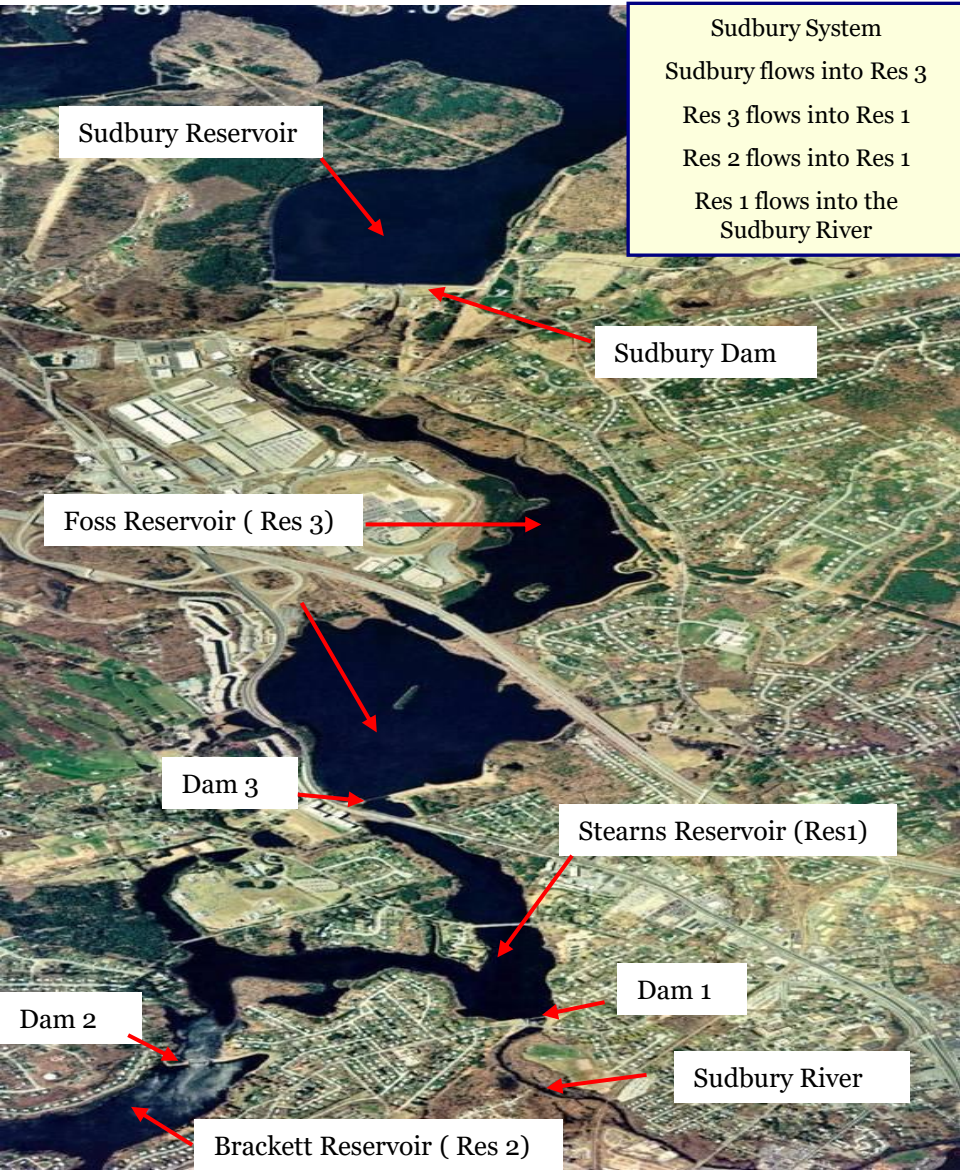
Swift & Nashua River

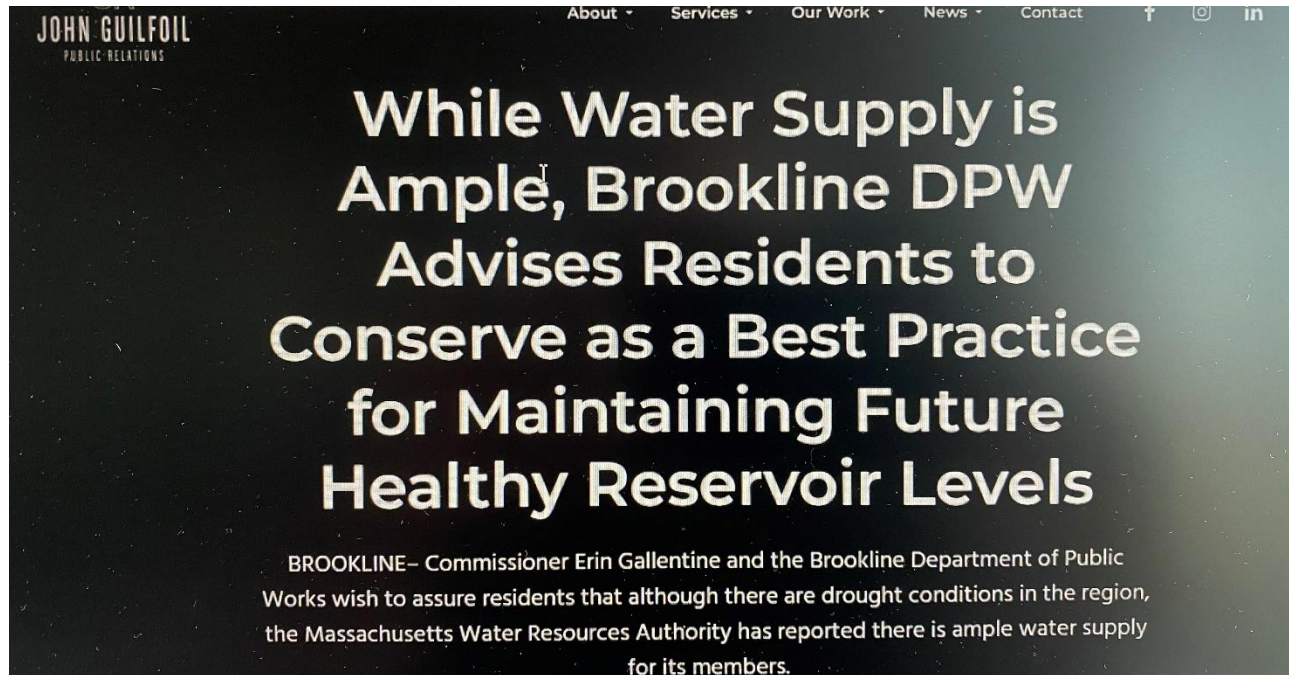
Nashua River
Jan. 2016 - July 2022





Sudbury & Foss Reservoirs





“While there are no mandatory restrictions on water use, MWRA provides recommendations on their website encouraging consumers to use water wisely. Their site, <https://www.mwra.com/monthly/watersupplystatus.htm>, has more detail about not only the reservoir levels, but also home and garden conservation tips.

The Commonwealth of Massachusetts also has a water conservation toolkit on their website <https://www.mass.gov/conservemawater>.”