



## Drought Management Task Force Update

07.11.22

John Gregoire, Program Manager, Reservoir Operations



# MWRA Fully- and Partially-supplied communities

## MWRA Fully and Partially Supplied Water Communities

### Fully Supplied

#### (metro Boston/MetroWest)

- 1 Arlington
- 2 Belmont
- 3 Boston
- 4 Brookline
- 5 Chelsea
- 6 Everett
- 7 Framingham
- 8 Lexington
- 9 Lynnfield Water District
- 10 Malden
- 11 Marblehead
- 12 Medford
- 13 Melrose
- 14 Milton
- 15 Nahant
- 16 Newton
- 17 Norwood
- 18 Quincy
- 19 Reading
- 20 Revere
- 21 Saugus
- 22 Somerville
- 23 Southborough
- 24 Stoneham
- 25 Swampscott
- 26 Waltham
- 27 Watertown
- 28 Weston
- 29 Winthrop

### Partially Supplied (metro)

- 1 Ashland
- 2 Bedford\*
- 3 Burlington
- 4 Canton
- 5 Dedham (D-W Water District)
- 6 Marlborough \*
- 7 Needham
- 8 Northborough \*
- 9 Peabody
- 10 Stoughton
- 11 Wakefield
- 12 Wellesley
- 13 Westwood (D-W Water District)
- 14 Wilmington
- 15 Winchester
- 16 Woburn
- 17 Cambridge (occasionally)
- 18 Lynn (G.E. Plant only)

29 fully supplied (metro Boston/MetroWest)

18 partially supplied (metro)

3 fully supplied CVA

3 raw water

3 Misc Non-Community

Total Community count is 53

Excluding from the count Hanscom, Westover, Westborough SH and Deer Island

### Fully Supplied CVA System

- 1 Chicopee
- 2 South Hadley FD #1
- 3 Wilbraham

### Raw Water

- 1 Clinton
- 2 Leominster (only in emergency)
- 3 Worcester (occasionally)

### Miscellaneous Non-Community Users

- 1 Hanscom Air Base (via Lexington and Bedford)
- 2 Westover AFB (via Chicopee)
- 3 Deer Island WWTP (NTNC PWS)

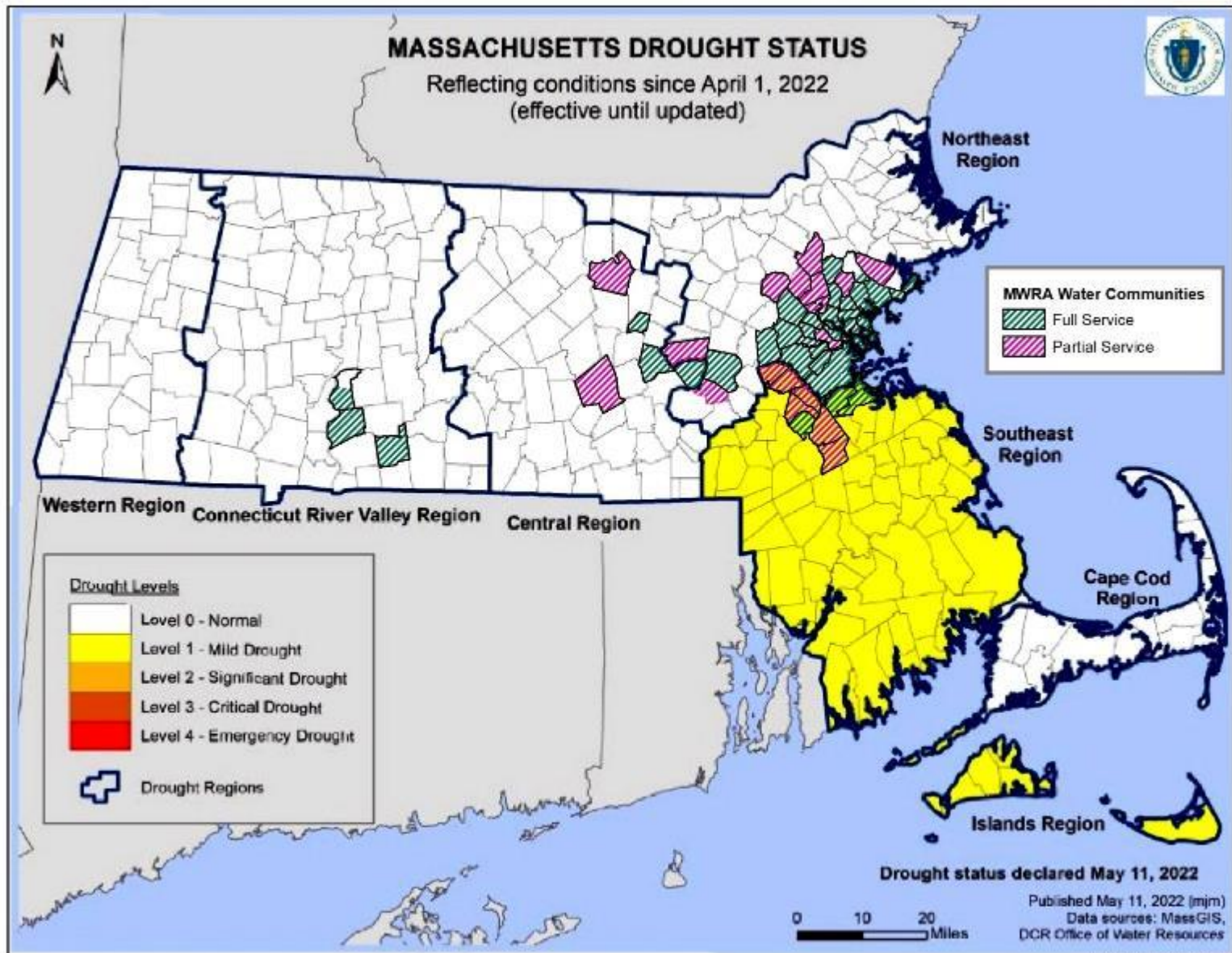
\* - Northborough and Marlborough are currently fully supplied; Bedford has taken its local source off line for PFAS and is also currently fully supplied

Metro Boston and MetroWest Communities Served by the Carroll Water Treatment Plant  
Chicopee Valley Aqueduct  
Communities served by the  
Brusch Treatment Facility  
Westborough SH no longer served by MWRA



# MWRA Communities by Drought Region

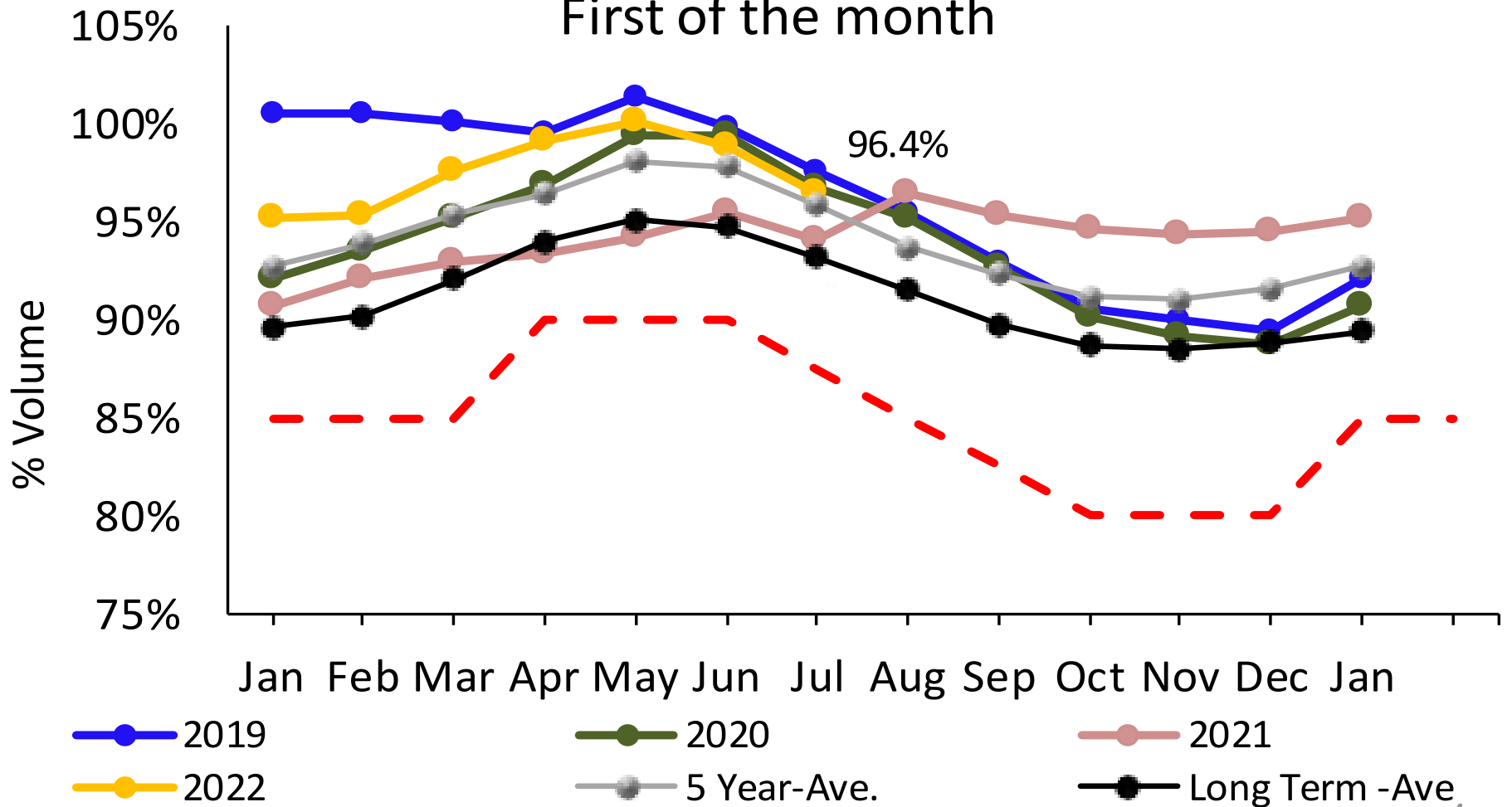
NE = 37  
SE = 9  
C = 4  
CT = 3





# Quabbin Reservoir

## Quabbin Reservoir Volume First of the month

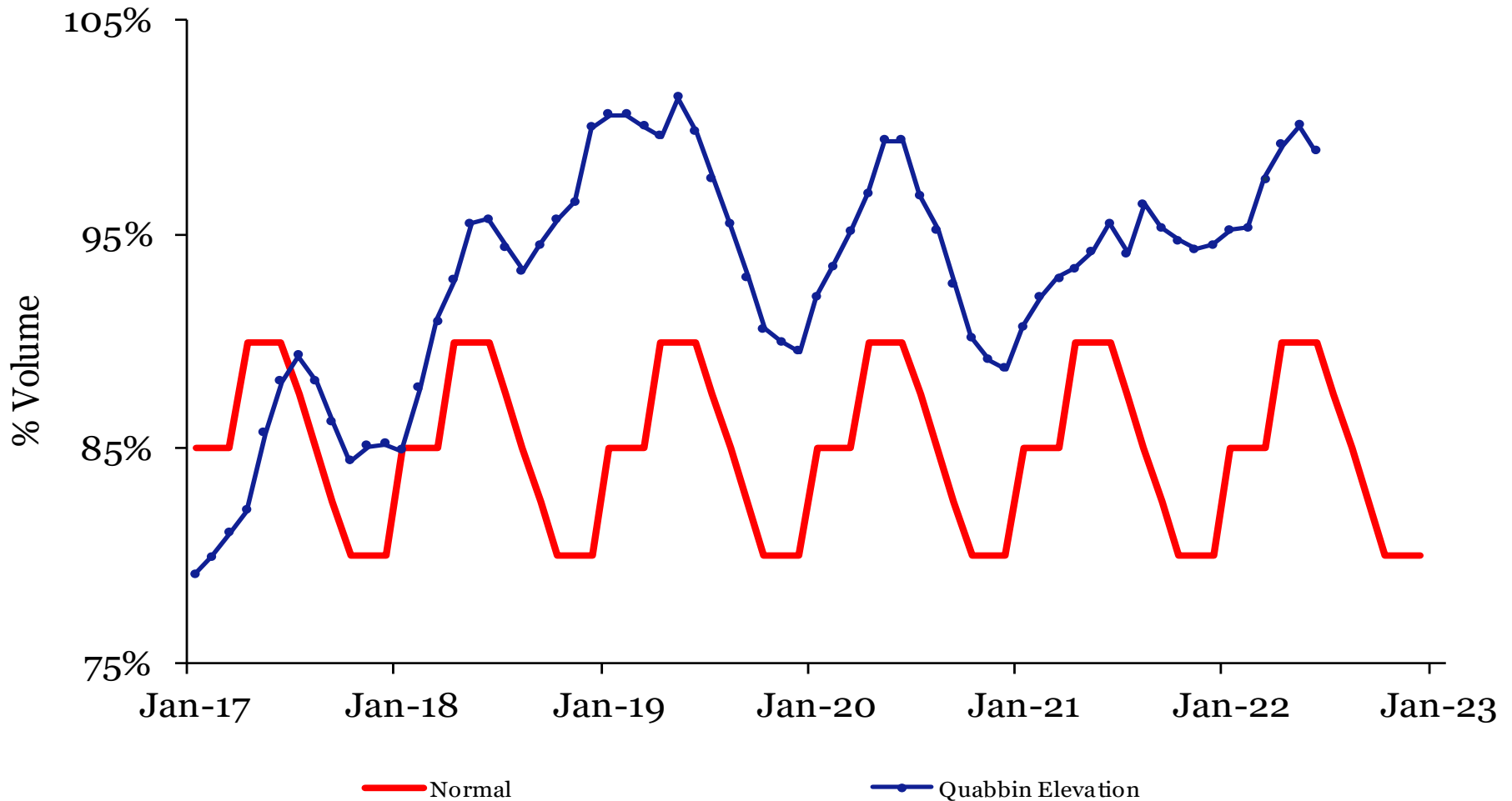




# Quabbin Reservoir

Date	Elevation	Volume	% Volume
7/11/22	527.64	393,964	95.6%
6/9/22	529.02	404,557	98.1%
Totals	-1.38	-10,593	-2.6%

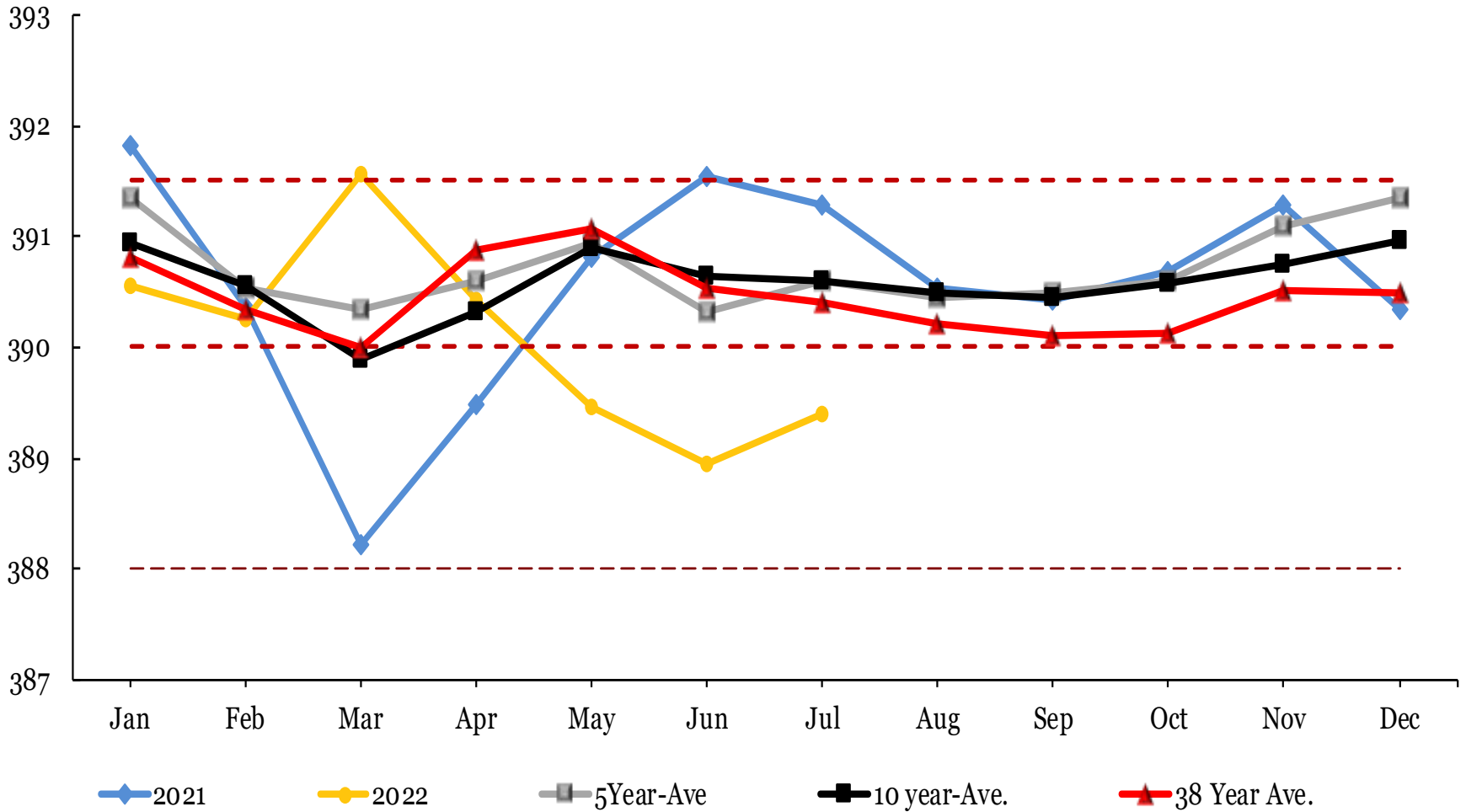
## Quabbin Reservoir Volume First of the Month





# Wachusett Reservoir

## Wachusett Reservoir Elevation





# Sudbury & Foss Reservoirs

