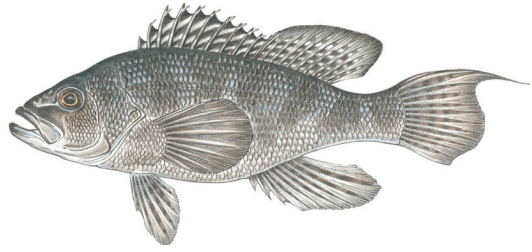




Commonwealth of Massachusetts
Division of Marine Fisheries
(617) 626-1520; www.mass.gov/marinefisheries
Size & Bag Limits for Saltwater Fish in MA Waters
2022

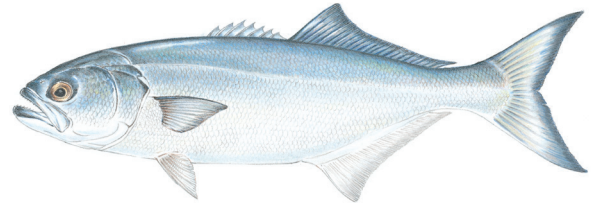


BLACK SEA BASS



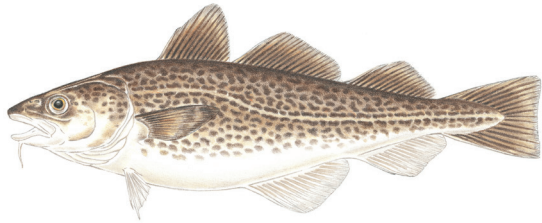
Season: May 21 - Sep 4
Minimum Size: 16"
Possession Limit: 4 fish

BLUEFISH



Season: all year
Minimum Size: no limit
Possession Limit: 3 fish

ATLANTIC COD*



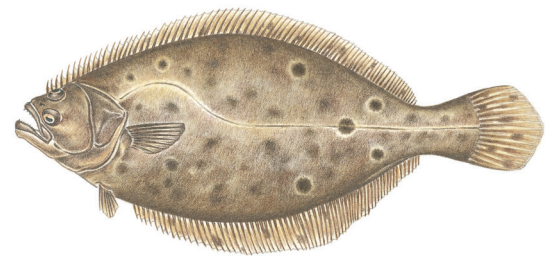
North of Cape Cod

Season: Apr 1 - Apr 14; Sep 1 - Oct 7
Size Limit: 22" min
Possession Limit: 1 fish

South of Cape Cod

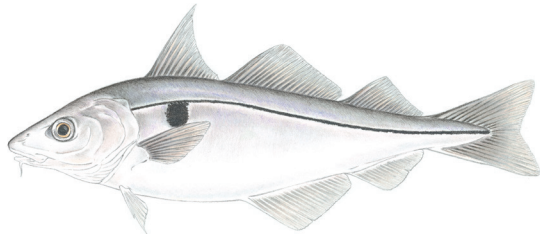
Aug 1 - Apr 30
22" min to 28" max
5 fish

FLUKE (SUMMER FLOUNDER)



Season: May 21 - Sep 29
Minimum Size: 16.5"
Possession Limit: 5 fish

HADDOCK*



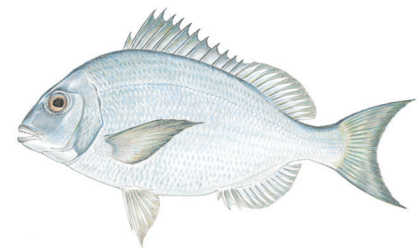
North of Cape Cod

Season: Jan 1 - Feb 28; Apr 1 - Dec 31
Minimum Size: 17"
Possession Limit: 20 fish

South of Cape Cod

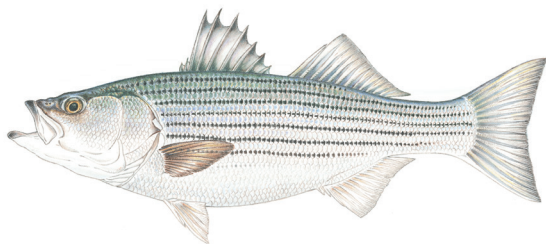
all year
18"
no limit

SCUP



Season: all year
Minimum Size: 10"
Possession Limit: 30 fish per angler. Not to exceed 150 fish per vessel with 5 or more anglers onboard.

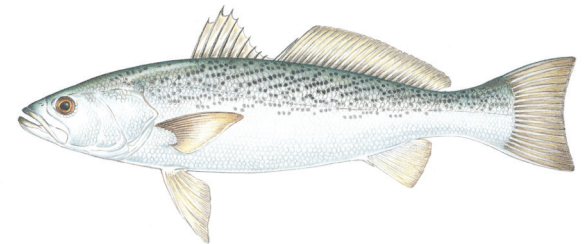
STRIPED BASS



Season: all year
Size Limit: 28" to less than 35"
Possession Limit: 1 fish

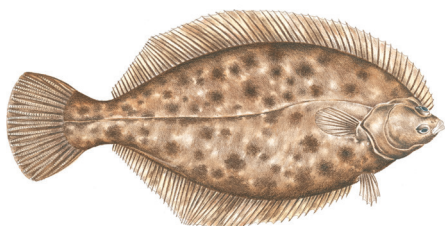
Use of in-line circle hooks is mandatory when fishing with whole or cut natural baits, except with artificial lures.

WEAKFISH



Season: all year
Minimum Size: 16"
Possession Limit: 1 fish

WINTER FLOUNDER



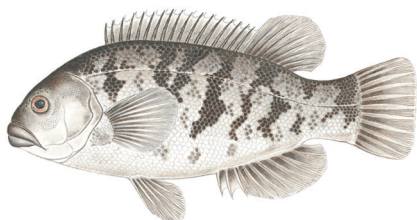
North of Cape Cod

Season: all year
Minimum Size: 12"
Possession Limit: 8 fish

South of Cape Cod

Mar 1 - Dec 31
12"
2 fish

TAUTOG



Season: Minimum	Jan 1 - Mar 31	Apr 1 - May 31	Jun 1 - Jul 31	Aug 1 - Oct 14	Oct 15 - Dec 31
Size:	NA	16"	16"	16"	16"
Possession Limit:	prohibited	3 fish	1 fish	3 fish	5 fish

Possession limit not to exceed 10-fish per vessel during all open periods.

* Regulations for cod and haddock both north and south of Cape Cod are subject to change pending final rule-making by NOAA Fisheries. Please visit our website (www.mass.gov/marinefisheries) to get the most up-to-date recreational fishing limits.