



Drought Management Task Force Update

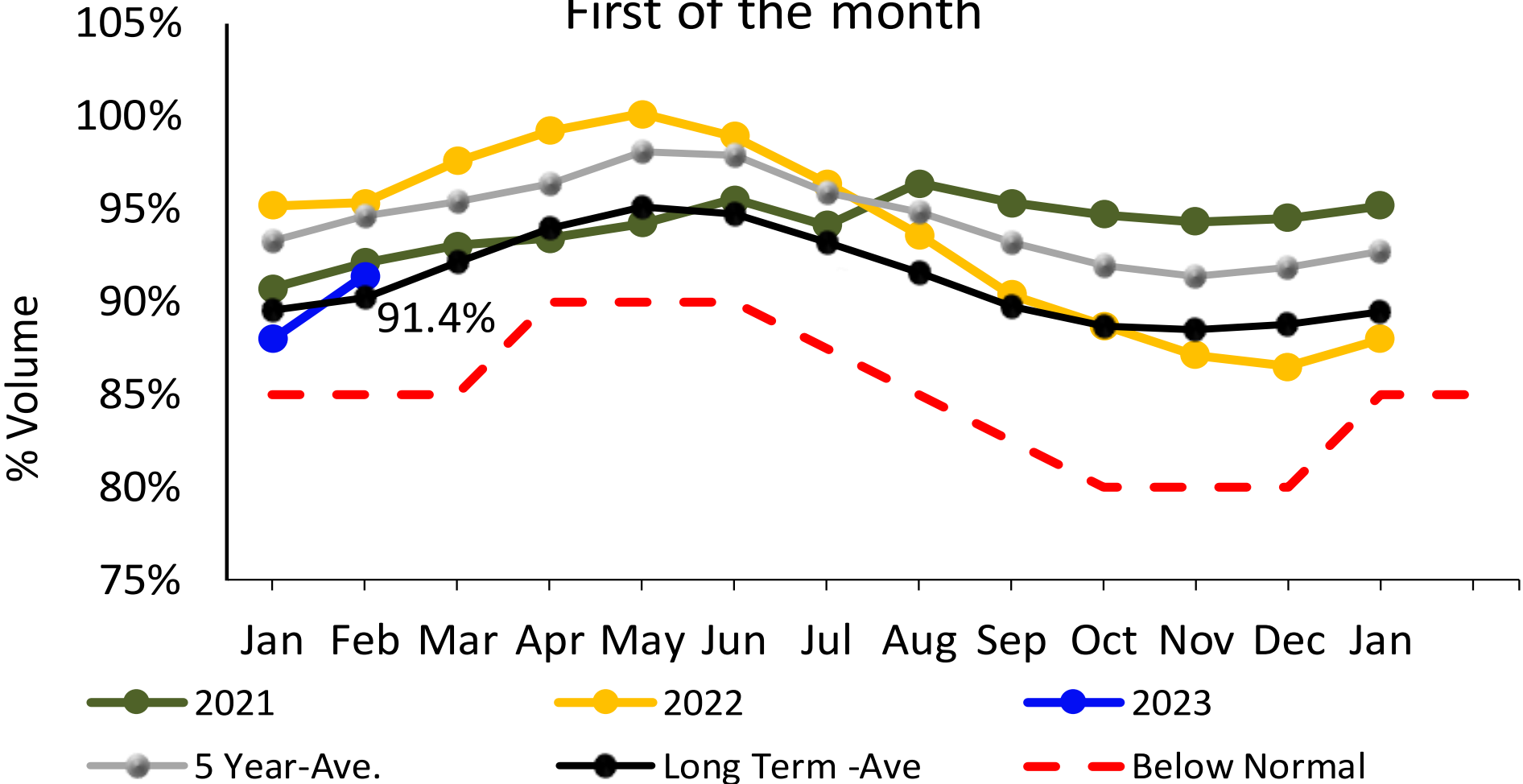
02.08.23

John Gregoire, Program Manager, Reservoir Operations



Quabbin Reservoir

Quabbin Reservoir Volume First of the month

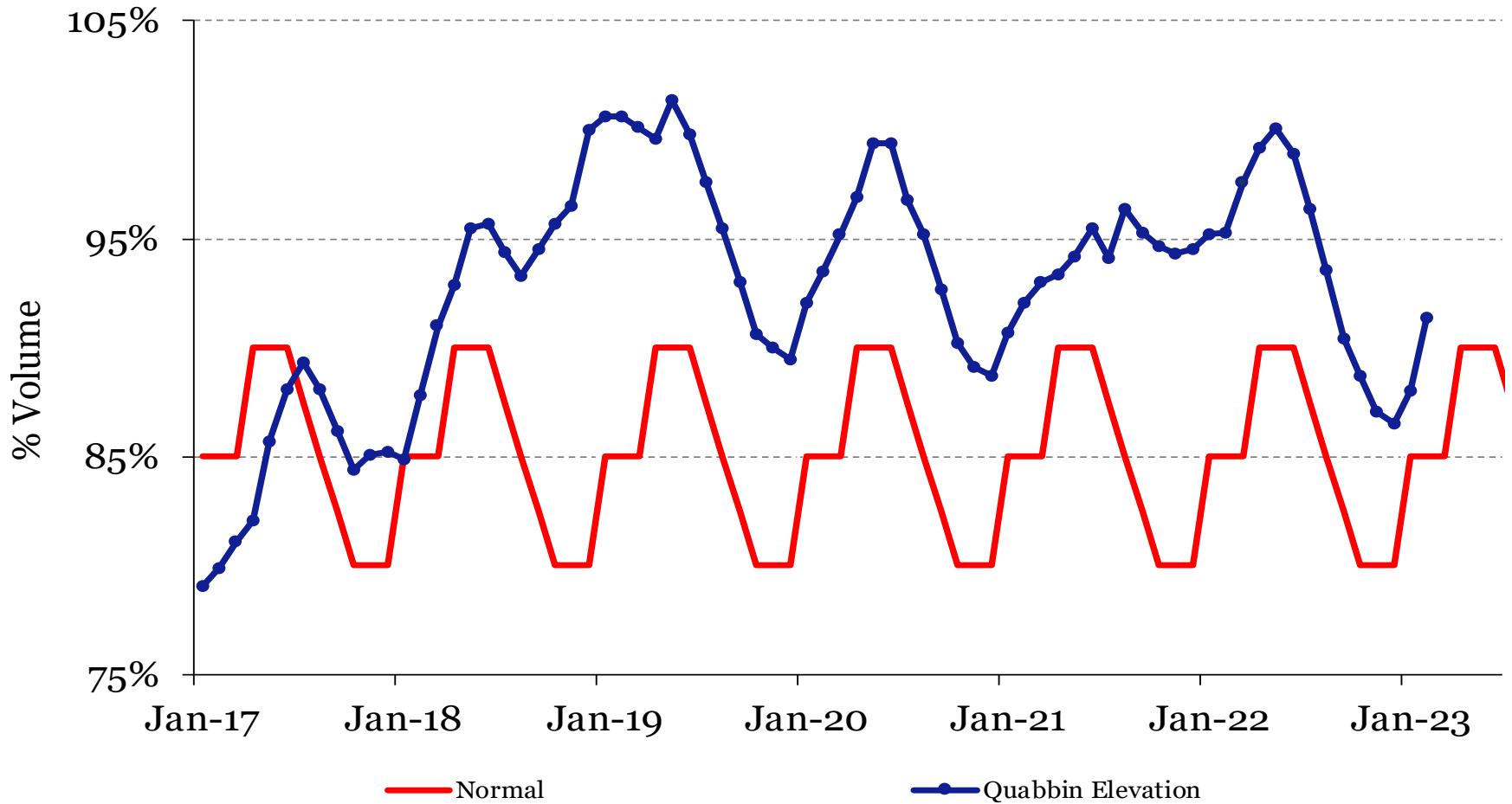




Quabbin Reservoir

Date	Elevation	Volume	% Volume
2/7/23	525.47	377,625	91.6%
1/5/23	523.74	364,650	88.5%
Totals	1.73	12,975	3.1%

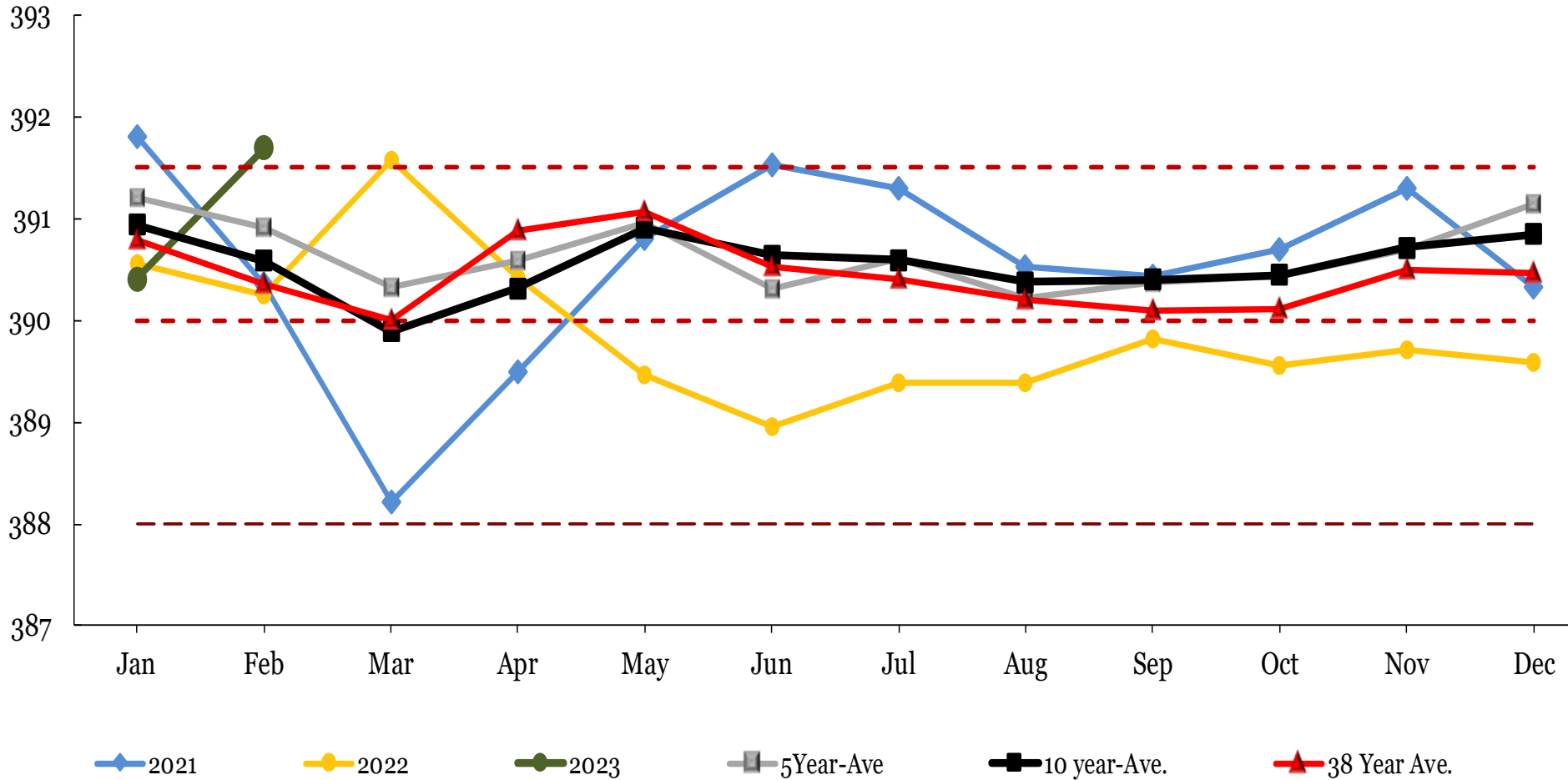
Quabbin Reservoir Volume First of the Month





Wachusett Reservoir

Wachusett Reservoir Elevation





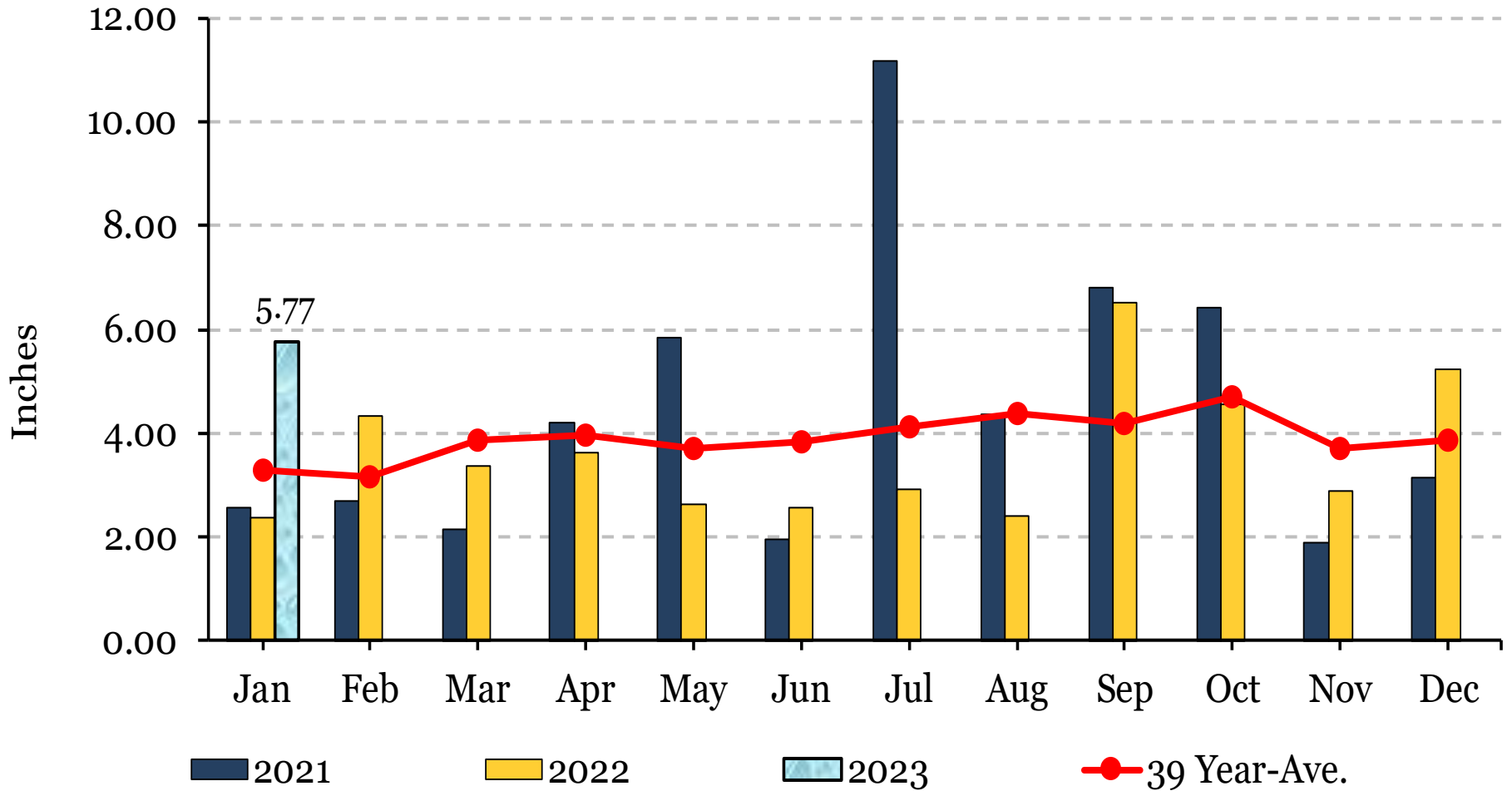
Wachusett Reservoir 02.04.23 ice formation





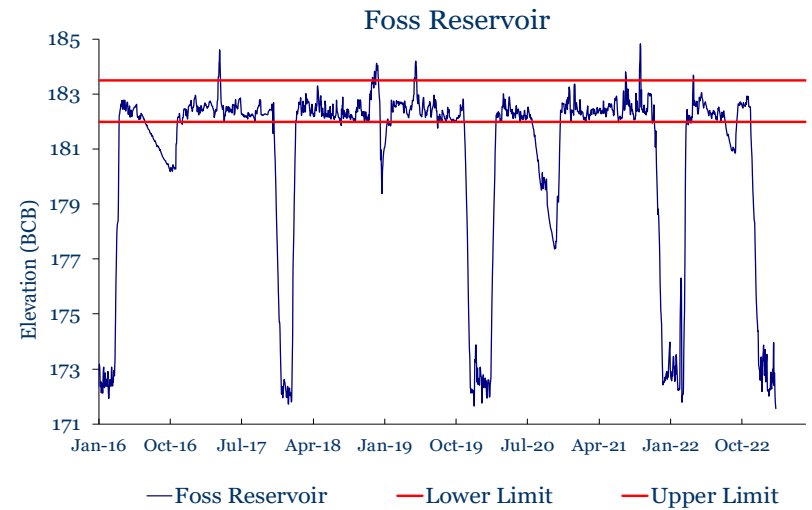
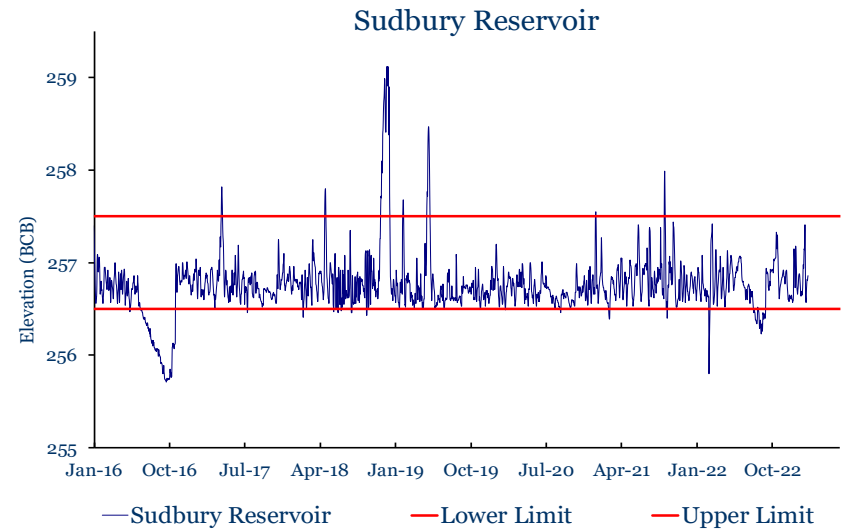
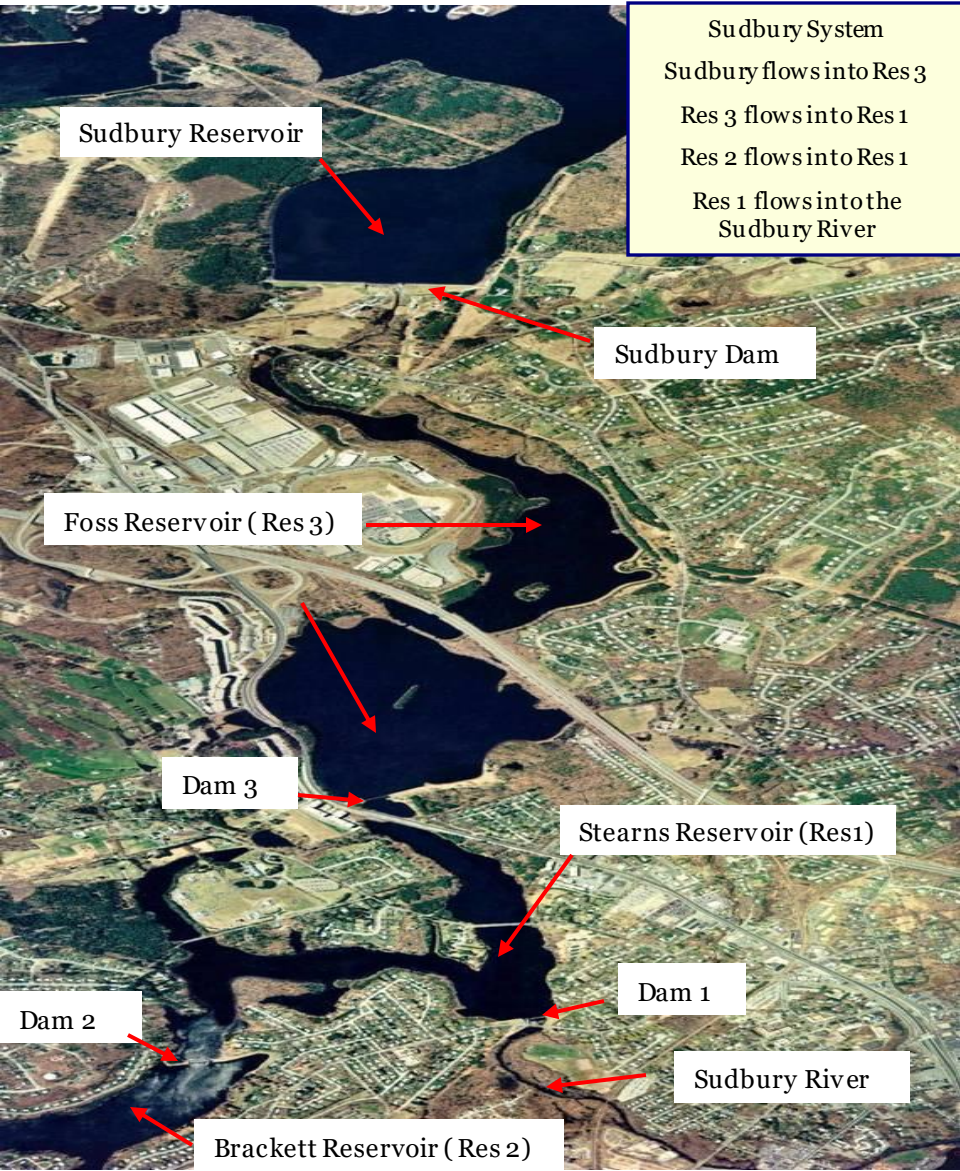
Precipitation * Combined Watersheds*

Precipitation





Sudbury & Foss Reservoirs





Foss Reservoir bed ice penetration 02.06.23



02.06.23
Foss Reservoir Ice depth test
In reservoir bed at Rear Dike

Appx. 2" of soft mud on surface, thawed since Sat. 02.04.23 deep freeze, and scraped away.

Solid 4" layer of ice

Soft mud below



Drawdown ice penetration at Foss Reservoir