

2024 CHARLES E. SHANNON COMMUNITY SAFETY INITIATIVE

BOSTON

Funded Partners: ABCD, Boston Centers for Youth & Families, Boston Medical Center's Violence Intervention Advocacy Program (VIAP), Boston Police Department, Boston Public Health Commission, Fathers' UpLift, Freedom House, Future Chefs, Hyde Square Taskforce, Justice Resource Institute, Louis D. Brown Peace Institute, Maverick Landing, More Than Words, Mothers for Justice & Equality, Project Right Inc., Sportsmen's Tennis & Enrichment Center, St. Stephen's Youth Programs, The Center for Teen Empowerment, YOU Boston, YouthBuild Boston, YouthConnect Boys & Girls Club of Boston

Funded by the Office of Grants and Research, a state agency that is part of the Executive Office of Public Safety and Security, the Charles E. Shannon Community Safety Initiative (Shannon) is modeled after the Office of Juvenile Justice and Delinquency Prevention's Comprehensive Gang Model. Shannon is a multi-sector approach used to address a community's gang and youth violence problem. Each community receiving Shannon funding demonstrates the presence of risk factors for youth and gang violence. Shannon participants must be between the ages of 10-24 years.

Strategies, Outcomes, and Funding Allocation

Total Funding: \$1,705,475.12*

Strategies	Outcomes	Funding Allocation
Case Management, Street Outreach, or Intervention	<u>2,057</u> youth received case management services <u>1,995</u> case management goals achieved	\$267,559.75
Community Mobilization	<u>12,995</u> community members attended events, meetings, & presentations <u>264</u> community events, meetings, & presentations held	\$158,284.00
Education & Employment	<u>1,088</u> youth participated in employment programs <u>1,181</u> youth participated in education programs	\$316,500.10
Positive Youth Development & Recreation	<u>1,184</u> youth participated in recreation programs <u>1,280</u> youth participated in youth development programs	\$451,871.92
Suppression	<u>1,400</u> hot spot patrols completed <u>80</u> law enforcement home visits completed	\$244,350.00

*In 2024, \$266,909.35 was allocated to administrative/other costs for the site.

Youth Risk Assessments

36% LOW-RISK*	Youth in danger of engaging in risky behavior or gang activity.
47% MODERATE-RISK*	Youth exposed to the same risk factors as low-risk youth, as well as additional risk factors such as truancy.
17% HIGH-RISK*	Youth who are perpetrators or victims of shooting or stabbing violence, and/or are known gang members.

* % of youth assessed for risk

Success Highlight

"A young woman, aged 19, came into our program and, despite being past the typical age for high school graduation, this participant was not on track for graduation, and her attendance at both school and Future Chefs was spotty. Our staff took notice and began mentoring her. We learned that she worked long hours in a restaurant after school and was too tired to attend classes or the program. We encouraged her to join our paid after-school program, which has shorter shifts and one-on-one coaching. She left her job and went all in at FC. In her time with us, she gained confidence and leadership skills, eventually becoming a Youth Leader. This year, at age 21, she graduated high school and began an internship outside of our program. She still returns for advice and guidance from our staff."

~Future Chefs

Massachusetts Executive Office of Public Safety and Security, Secretary Terrence Reidy
Office of Grants and Research, Executive Director Kevin Stanton
To learn more visit: <https://www.mass.gov/info-details/shannon-community-safety-initiative-csi>

Community Risk Factors

Massachusetts

Boston

Total Population (2023/2024 Estimates)	7,136,171	653,833
Population Lives in Poverty (2024)	10.4%	16.9%
Unemployment Rate (2024)	3.4%	3.7%
Total School Population (2023-2024)	966,726	66,220
Low-Income (2024-2025)	42.1%	70.1%
High School Dropout Rate (2022-2023)	2.1%	4.5%

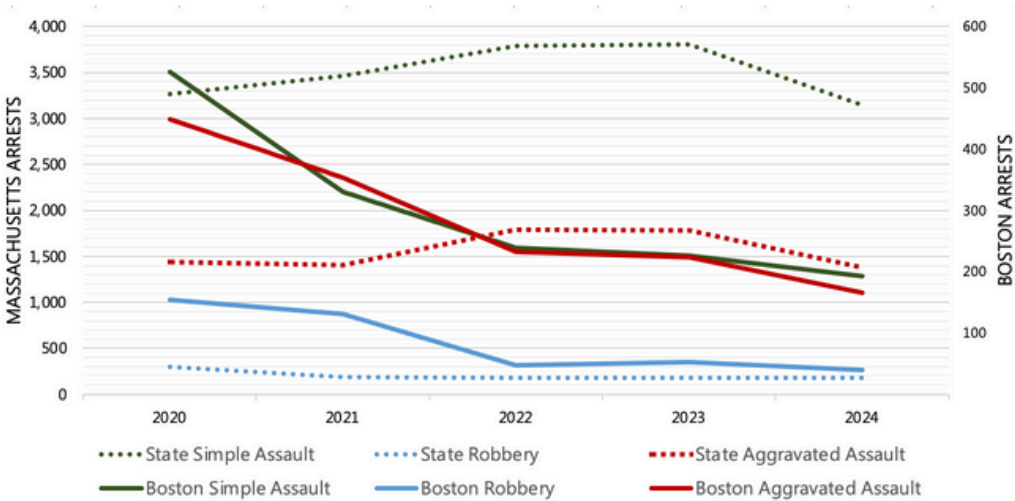
Sources: www.census.gov/quickfacts; profiles.doe.mass.edu; <https://lmi.dua.eol.mass.gov/LMI/LaborForceAndUnemployment#>

Gang Activity in Boston

85
Street Gangs
1,450
Gang Members
Between the Ages
of 10-24

The City of Boston has seen a significant decline in gun violence in recent years. Gunfire incidents in the city declined 15% in 2024 and are down 37% compared to the five-year average. Shooting victim totals declined 9% compared to last year, 34% compared to the five-year average, and nearly 40% compared to the 10-year average. This is the fourth consecutive year of declines in shooting victims and shooting incidents and the fourth year in a row with less than 200 victims shot in the city. Interpersonal conflicts among gang members have historically accounted for large shares of shootings in Boston. Penn's Crime and Justice Policy Lab is collaborating with the Boston Police Department on an analysis of the factors associated with these promising declines.

5-Year Trends in Youth Arrests (ages 10-24), 2020-2024



Source: National Incident Based Reporting System (NIBRS)
Further analytical work is needed to make an association between Shannon programming and declining arrests in focal communities.

Changes in Youth Arrests for Simple Assault, Robbery, and Aggravated Assault

Arrests for simple assaults from 2020-2024 in...

- Massachusetts decreased 4%
- Boston decreased by 63%

Arrests for robberies from 2020-2024 in...

- Massachusetts decreased 40%
- Boston decreased 74%

Arrests for aggravated assaults from 2020-2024 in...

- Massachusetts decreased 4%
- Boston decreased 63%

Information contained in this report is from funding applications, reports supplied by the site, MA Department of Elementary and Secondary Education, US Census, MA Executive Office of Labor and Workforce Development, and Office of Grants and Research / Research Policy and Analysis Division. Special thanks to the Statewide Research Partner, Northeastern University, and the Crime and Justice Policy Lab of the University of Pennsylvania, for preparing this brief.

2024 CHARLES E. SHANNON COMMUNITY SAFETY INITIATIVE BROCKTON

Funded Partners: Boys & Girls Clubs of Metro South, Brockton Police Department, Health Imperatives, Kids Konnect, Love to Learn Inc., Rose Conservatory, Safe Corners, Strategies for Youth

Funded by the Office of Grants and Research, a state agency that is part of the Executive Office of Public Safety and Security, the Charles E. Shannon Community Safety Initiative (Shannon) is modeled after the Office of Juvenile Justice and Delinquency Prevention's Comprehensive Gang Model. Shannon is a multi-sector approach used to address a community's gang and youth violence problem. Each community receiving Shannon funding demonstrates the presence of risk factors for youth and gang violence. Shannon participants must be between the ages of 10-24 years.

Strategies, Outcomes, and Funding Allocation

Total Funding: \$745,842.88

Strategies	Outcomes		Funding Allocation
Case Management, Street Outreach, or Intervention	67 youth received case management services	106 youth received street outreach services	\$295,252.35
Community Mobilization	500 community members attended events, meetings, & presentations	2 community events, meetings, & presentations held	\$36,415.42
Education & Employment	91 youth participated in employment programs	91 youth participated in education programs	\$61,432.31
Positive Youth Development & Recreation	605 youth participated in recreation programs	615 youth participated in youth development programs	\$279,911.96
Suppression	7 hot spot patrols completed	6 arrests of gang members/high impact players	\$72,830.84

Youth Risk Assessments

- 57%

LOW-RISK*

Youth in danger of engaging in risky behavior or gang activity.
- 35%

MODERATE-RISK*

Youth exposed to the same risk factors as low-risk youth, as well as additional risk factors such as truancy.
- 8%

HIGH-RISK*

Youth who are perpetrators or victims of shooting or stabbing violence, and/or are known gang members.

* % of youth assessed for risk

Success Highlight

"When this youth first joined the Summer Leaders Program, he was shy and reserved, often sticking close to two other teens and staying quiet in group settings. However, after joining Kidz Konnect and the Achiever's Program, he began to truly come out of his shell. He started engaging more with others, sharing his thoughts, and becoming more confident in his interactions. His love for art was apparent, as he thrived in creative activities, finding new ways to express himself. This newfound confidence even led him to speak in front of the entire Achiever's Program, including peers and adults (something he never would have been comfortable doing before). This youth is an extremely capable, creative, and intelligent teen, and it is amazing to watch him grow."

~Kidz Konnect (Old Colony YMCA)

Community Risk Factors

Massachusetts

Brockton

Total Population (2023/2024 Estimates)	7,136,171	104,890
Population Lives in Poverty (2024)	10.4%	13.9%
Unemployment Rate (2024)	3.4%	5.0%
Total School Population (2023-2024)	966,726	16,997
Low-Income (2024-2025)	42.1%	74.0%
High School Dropout Rate (2022-2023)	2.1%	5.9%

Sources: www.census.gov/quickfacts; profiles.doe.mass.edu; <https://lmi.dua.eol.mass.gov/LMI/LaborForceAndUnemployment#>

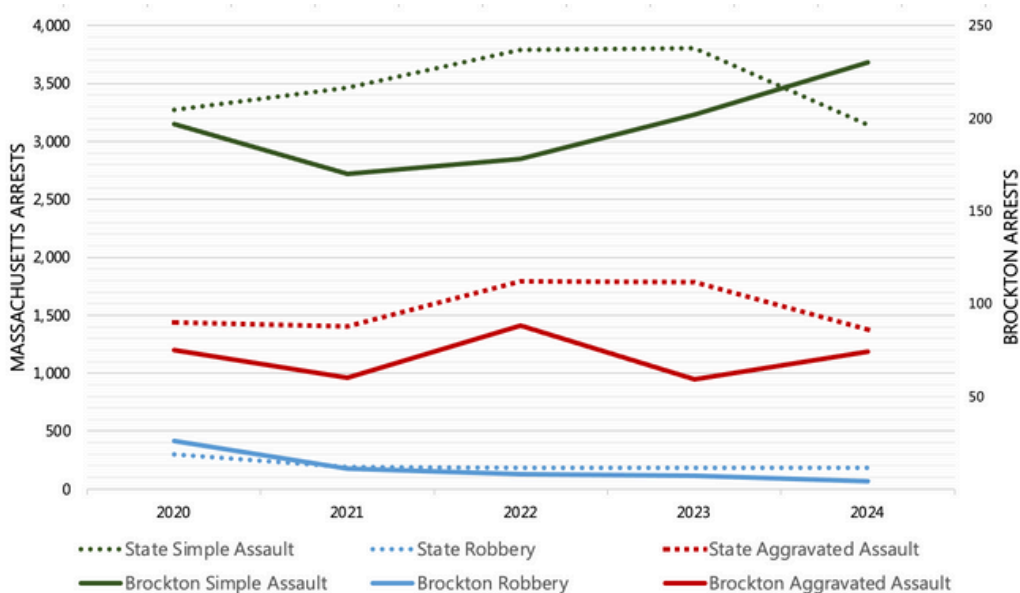
Gang Activity in Brockton

17
Street Gangs

300
Active Gang
Members

The type of gang activity in the city of Brockton frequently changes. Recently, Brockton experienced several car thefts in and around the city. Gangs recruit younger individuals to assist with these thefts by hiding material and/or keys for vehicles. The internet, social media, and music videos serve as means of recruitment and platforms for gang feuds. Gun violence in Brockton continues to occur, with gangs retaliating against each other.

5-Year Trends in Youth Arrests (ages 10-24), 2020-2024



Source: National Incident Based Reporting System (NIBRS)

Further analytical work is needed to make an association between Shannon programming and declining arrests in focal communities.

Changes in Youth Arrests for Simple Assault, Robbery, and Aggravated Assault

Arrests for simple assaults from 2020-2024 in...

- Massachusetts decreased 4%
- Brockton increased 17%

Arrests for robberies from 2020-2024 in...

- Massachusetts decreased 40%
- Brockton decreased 85%

Arrests for aggravated assaults from 2020-2024 in...

- Massachusetts decreased 4%
- Brockton decreased 1%

Information contained in this report is from funding applications, reports supplied by the site, MA Department of Elementary and Secondary Education, US Census, MA Executive Office of Labor and Workforce Development, and Office of Grants and Research / Research Policy and Analysis Division. Special thanks to the Statewide Research Partner, Northeastern University, and the Crime and Justice Policy Lab of the University of Pennsylvania, for preparing this brief.

2024 CHARLES E. SHANNON COMMUNITY SAFETY INITIATIVE

FALL RIVER

Funded Partners: Bristol County District Attorney's Office, Bristol County Sheriff's Office, Bristol County Training Consortium/MassHire Bristol Career Centers, Fall River Boys & Girls Club, Fall River Police Department, Fall River Public Schools, Fall River YMCA, Fall River Youth Court, Family Service Association, Greater Fall River RE-CREATION, Massachusetts Parole Board, Solid Ground Psychotherapy, United Neighbors of Fall River, YouthBuild Fall River

Funded by the Office of Grants and Research, a state agency that is part of the Executive Office of Public Safety and Security, the Charles E. Shannon Community Safety Initiative (Shannon) is modeled after the Office of Juvenile Justice and Delinquency Prevention's Comprehensive Gang Model. Shannon is a multi-sector approach used to address a community's gang and youth violence problem. Each community receiving Shannon funding demonstrates the presence of risk factors for youth and gang violence. Shannon participants must be between the ages of 10-24 years.

Strategies, Outcomes, and Funding Allocation

Total Funding: \$653,973.25*

Strategies	Outcomes		Funding Allocation
Case Management, Street Outreach, or Intervention	81 youth received case management services	12 street outreach deployments to interrupt retaliation or mediate a situation	\$133,770.73
Community Mobilization	2,226 community members attended events, meetings, & presentations	50 community events, meetings, & presentations held	\$151,787.27
Education & Employment	20 youth participated in employment programs	13 youth participated in subsidized year-round employment	\$52,546.71
Positive Youth Development & Recreation	346 youth participated in recreation programs	318 youth participated in youth development programs	\$126,715.97
Suppression	121 hot spot patrols completed	52 gang members/high impact players arrested	\$156,956.22

*In 2024, \$32,196.35 was allocated to administrative/other costs for the site.

Youth Risk Assessments

7% LOW-RISK*	Youth in danger of engaging in risky behavior or gang activity.
45% MODERATE-RISK*	Youth exposed to the same risk factors as low-risk youth, as well as additional risk factors such as truancy.
48% HIGH-RISK*	Youth who are perpetrators or victims of shooting or stabbing violence, and/or are known gang members.

* % of youth assessed for risk

Success Highlight

"A young, female single parent had little to no family/adult support and was in and out of foster care and residential programming her entire life. This year, she successfully completed a medical assistant program. During the program, she continued to work part-time as a CNA and care for her child, who required medical attention. We continued to provide case management services to her and the necessary support that she required. After completing the program, she secured unsubsidized employment as a medical assistant."

~ Bristol County Training Consortium / MassHire Bristol Career Centers

Massachusetts Executive Office of Public Safety and Security, Secretary Terrence Reidy
Office of Grants and Research, Executive Director Kevin Stanton

To learn more visit: <https://www.mass.gov/info-details/shannon-community-safety-initiative-csi>

Community Risk Factors

Massachusetts

Fall River

Total Population (2023/2024 Estimates)	7,136,171	93,840
Population Lives in Poverty (2024)	10.4%	20.9%
Unemployment Rate (2024)	3.4%	5.8%
Total School Population (2023-2024)	966,726	14,054
Low-Income (2024-2025)	42.1%	78.3%
High School Dropout Rate (2022-2023)	2.1%	5.0%

Sources: www.census.gov/quickfacts; profiles.doe.mass.edu; <https://lmi.dua.eol.mass.gov/LMI/LaborForceAndUnemployment#>

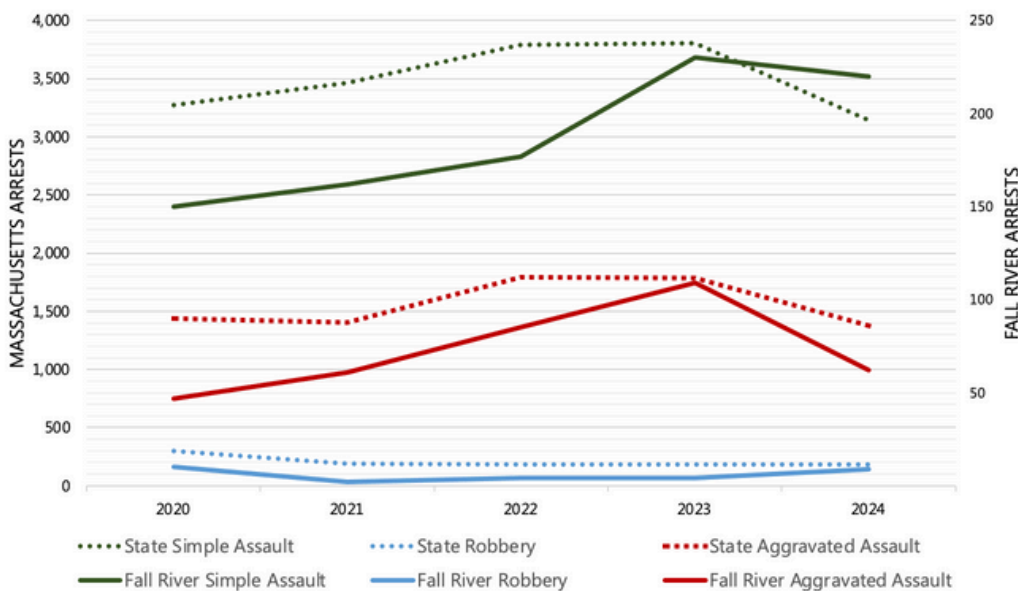
Gang Activity in Fall River

58
Street Gangs

761
Active Gang
Members

Social media has played a major role in gang activity, including escalating incidents and retaliation. Gangs create and share videos that glorify the “gang lifestyle” (i.e., guns, drugs, women, power, money) and use them for recruitment. Social media is also used to arrange drug sales, orchestrate violence, disrespect other gangs, provoke disputes, and make intimidating threats to adversaries. The widespread utilization of social media means that groups are no longer confined to a specific “turf.” Older gang members recruit juveniles to engage in criminal activity. The gang unit continues to observe the initial gang involvement/activity beginning at an earlier age than in the past. This trend coincides with youths’ increased use of social media and the fluidity of gangs. Many children are placed into roles such as lookout or are made responsible for holding weapons and drugs. In 2024, there has been a notable uptick in firearms seized from a younger juvenile demographic.

5-Year Trends in Youth Arrests (ages 10-24), 2020-2024



Source: National Incident Based Reporting System (NIBRS)

Further analytical work is needed to make an association between Shannon programming and declining arrests in focal communities.

Changes in Youth Arrests for Simple Assault, Robbery, and Aggravated Assault

Arrests for simple assaults from
2020-2024 in...

- Massachusetts decreased 4%
- Fall River increased 47%

Arrests for robberies from
2020-2024 in...

- Massachusetts decreased 40%
- Fall River decreased 10%

Arrests for aggravated assaults
from 2020-2024 in...

- Massachusetts decreased 4%
- Fall River increased 32%

Information contained in this report is from funding applications, reports supplied by the site, MA Department of Elementary and Secondary Education, US Census, MA Executive Office of Labor and Workforce Development, and Office of Grants and Research / Research Policy and Analysis Division. Special thanks to the Statewide Research Partner, Northeastern University, and the Crime and Justice Policy Lab at the University of Pennsylvania, for preparing this brief.

2024 CHARLES E. SHANNON COMMUNITY SAFETY INITIATIVE FITCHBURG/GARDNER

Funded Partners: Fitchburg Police Department, Gardner Police Department, Leominster Police Department, Making Opportunity Count, Mount Wachusett Community College, Shining Light Ministries, Spanish American Center

Funded by the Office of Grants and Research, a state agency that is part of the Executive Office of Public Safety and Security, the Charles E. Shannon Community Safety Initiative (Shannon) is modeled after the Office of Juvenile Justice and Delinquency Prevention's Comprehensive Gang Model. Shannon is a multi-sector approach used to address a community's gang and youth violence problem. Each community receiving Shannon funding demonstrates the presence of risk factors for youth and gang violence. Shannon participants must be between the ages of 10-24 years.

Strategies, Outcomes, and Funding Allocation

Total Funding: \$450,250.50*

Strategies	Outcomes		Funding Allocation
Case Management, Street Outreach, or Intervention	<u>97</u> youth received case management services	<u>97</u> case management goals achieved	\$51,850.50
Education & Employment	<u>43</u> youth participated in employment programs	<u>114</u> youth participated in education programs	\$113,135.10
Positive Youth Development & Recreation	<u>195</u> youth participated in recreation programs	<u>146</u> youth participated in youth development programs	\$148,654.90
Suppression	<u>118</u> hot spot patrols completed	<u>184</u> law enforcement home visits completed	\$105,570.00

*In 2024, \$31,040.00 was allocated to administrative/other costs for the site.

Youth Risk Assessments

50% LOW-RISK*	Youth in danger of engaging in risky behavior or gang activity.
49% MODERATE-RISK*	Youth exposed to the same risk factors as low-risk youth, as well as additional risk factors such as truancy.
1% HIGH-RISK*	Youth who are perpetrators or victims of shooting or stabbing violence, and/or are known gang members.

* % of youth assessed for risk

Success Highlight

"In the summer of 2024, one of our Shannon participants faced a significant life-altering event which resulted in visual neuropathy. We worked closely with him to connect him to the Disability Services Office, assist with processing the required documentation, and identify available accommodations to support his transition. The student was reassured that he could take the time needed to adjust to these life changes and was reminded of the program's ongoing commitment to providing a supportive community to help him achieve his academic goals when he is ready to return."

~ Mount Wachusett Community College

Massachusetts Executive Office of Public Safety and Security, Secretary Terrence Reidy
Office of Grants and Research, Executive Director Kevin Stanton
To learn more visit: <https://www.mass.gov/info-details/shannon-community-safety-initiative-csi>

Community Risk Factors

Massachusetts

Fitchburg

Gardner

Total Population (2023/2024 Estimates)	7,136,171	41,579	20,974
Population Lives in Poverty (2024)	10.4%	15.5%	14.3%
Unemployment Rate (2024)	3.4%	5.5%	4.5%
Total School Population (2023-2024)	966,726	6,371	2,952
Low-Income (2024-2025)	42.1%	71.5%	63.0%
High School Dropout Rate (2022-2023)	2.1%	2.0%	2.7%

Sources: www.census.gov/quickfacts; profiles.doe.mass.edu; <https://lmi.dua.eol.mass.gov/LMI/LaborForceAndUnemployment#>

Gang Activity in Fitchburg/Gardner

8

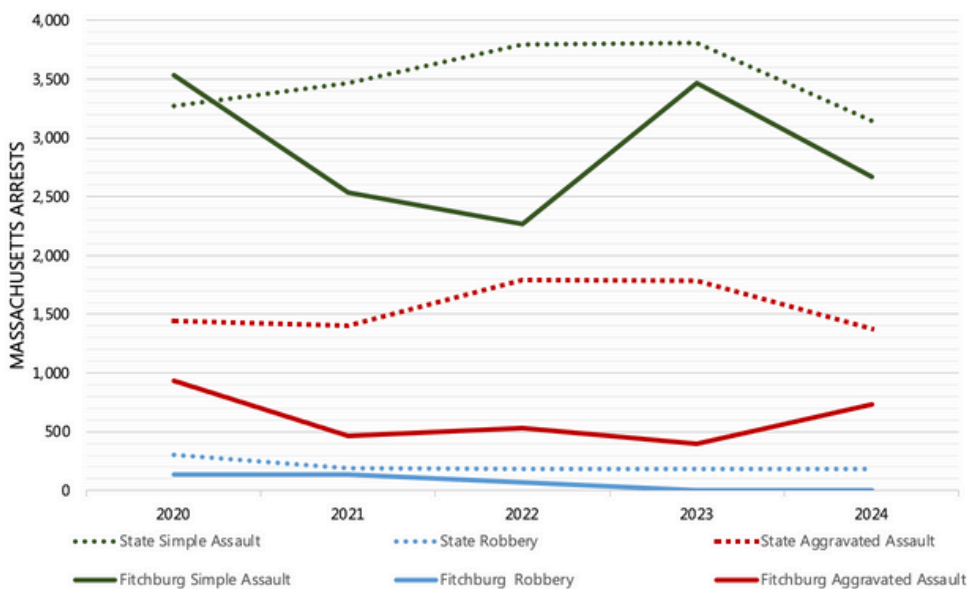
Street Gangs

36 Estimated Gang
Members

Between the Ages of
10-24

The youth gang problem in Fitchburg mainly involves small, unorganized gangs in which members or associates have historically used certain codes to identify membership. Fitchburg is home to a large number of gangs, which include prolific national gangs such as the Almighty Latin Kings & Queens, Vice Lords, Bloods, and local street gangs. These gangs engage in gun violence, juvenile crime, and narcotics activity. Most crime is highly concentrated amongst a small number of highly active offenders. Although many of these crimes are reported, a significant number of serious gang-related crimes go unreported for fear of repercussions or of being exposed to police as being involved in criminal activity.

5-Year Trends in Youth Arrests (ages 10-24), 2020-2024



Changes in Youth Arrests for Simple Assault, Robbery, and Aggravated Assault

Arrests for simple assaults from 2020-2024 in...

- Massachusetts decreased 4%
- Fitchburg/Gardner decreased 25%

Arrests for robberies from 2020-2024 in...

- Massachusetts decreased 40%
- Fitchburg/Gardner decreased 100%

Arrests for aggravated assaults from 2020-2024 in....

- Massachusetts decreased 4%
- Fitchburg/Gardner decreased 21%

Source: National Incident Based Reporting System (NIBRS)

Further analytical work is needed to make an association between Shannon programming and declining arrests in focal communities.

Information contained in this report is from funding applications, reports supplied by the site, MA Department of Elementary and Secondary Education, US Census, MA Executive Office of Labor and Workforce Development, and Office of Grants and Research / Research Policy and Analysis Division. Special thanks to the Statewide Research Partner, Northeastern University, and the Crime and Justice Policy Lab of the University of Pennsylvania, for preparing this brief.

2024 CHARLES E. SHANNON COMMUNITY SAFETY INITIATIVE

HAVERHILL/METHUEN

Funded Partners: Boys & Girls Club of Greater Haverhill, CAI/MakeIT Haverhill, Haverhill Police Department, Leaving the Streets Ministries, Methuen Arlington Neighborhood Inc., Methuen Police Department, North Shore YMCA, UTEC, Whittier Regional Vocational Technical High School, YWCA of Northeastern Massachusetts

Funded by the Office of Grants and Research, a state agency that is part of the Executive Office of Public Safety and Security, the Charles E. Shannon Community Safety Initiative (Shannon) is modeled after the Office of Juvenile Justice and Delinquency Prevention's Comprehensive Gang Model. Shannon is a multi-sector approach used to address a community's gang and youth violence problem. Each community receiving Shannon funding demonstrates the presence of risk factors for youth and gang violence. Shannon participants must be between the ages of 10-24 years.

Strategies, Outcomes, and Funding Allocation

Total Funding: \$310,467.70*

Strategies	Outcomes		Funding Allocation
Case Management, Street Outreach, or Intervention	<u>116</u> youth received case management services	<u>171</u> youth received street outreach services	\$94,990.53
Community Mobilization	<u>3,236</u> community members attended events, meetings, & presentations	<u>247</u> community events, meetings, & presentations held	\$31,032.31
Education & Employment	<u>576</u> youth participated in employment programs	<u>2,452</u> youth participated in education programs	\$38,314.55
Positive Youth Development & Recreation	<u>1,994</u> youth participated in recreation programs	<u>1,614</u> youth participated in youth development programs	\$98,283.45
Suppression	<u>330</u> hot spot patrols completed	<u>14</u> gang members/high impact players arrested	\$34,031.87

*In 2024, \$13,815.00 was allocated to administrative/other costs for the site.

Youth Risk Assessments

72% LOW-RISK*	Youth in danger of engaging in risky behavior or gang activity.
16% MODERATE-RISK*	Youth exposed to the same risk factors as low-risk youth, as well as additional risk factors such as truancy.
12% HIGH-RISK*	Youth who are perpetrators or victims of shooting or stabbing violence, and/or are known gang members.

* % of youth assessed for risk

Success Highlight

"We had a participant in our healthy relationship workshop express their concern about a potentially unhealthy relationship. After carefully reviewing the knowledge and information from the workshop, the participant was able to create better boundaries with their peers, realizing how some behaviors are unhealthy or unsafe. The participant was very grateful to receive more knowledge on the topic."

~ YWCA of Northeastern Massachusetts

Community Risk Factors

Massachusetts

Haverhill

Methuen

Total Population (2023/2024 Estimates)	7,136,171	67,415	53,455
Population Lives in Poverty (2024)	10.4%	10.6%	8.2%
Unemployment Rate (2024)	3.4%	4.1%	4.4%
Total School Population (2023-2024)	966,726	9,524	7,875
Low-Income (2024-2025)	42.1%	61.0%	54.3%
High School Dropout Rate (2022-2023)	2.1%	4.3%	2.0%

Sources: www.census.gov/quickfacts; profiles.doe.mass.edu; <https://lmi.dua.eol.mass.gov/LMI/LaborForceAndUnemployment#>

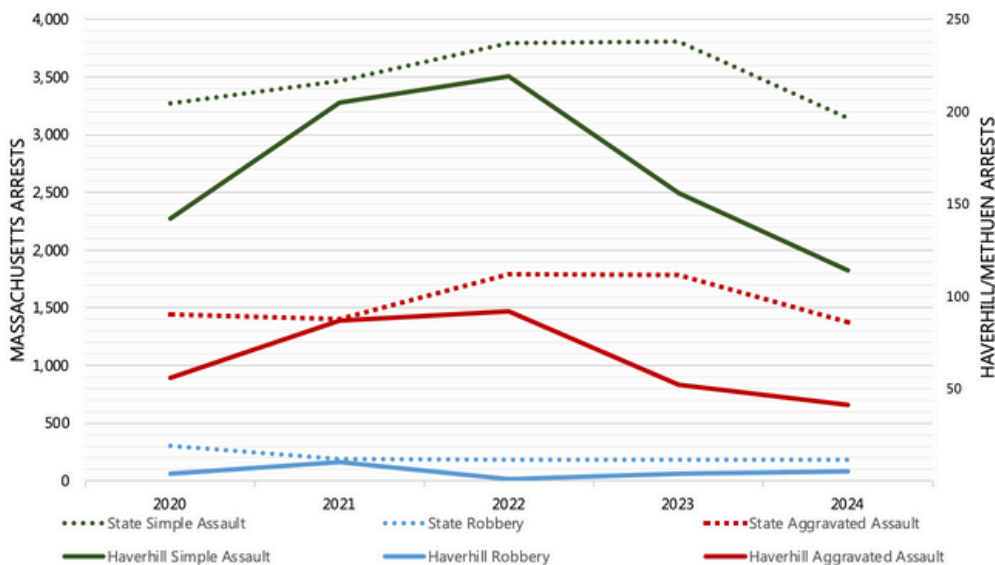
Gang Activity in Haverhill/Methuen

21
Street Gangs

750
Active Gang
Members

Haverhill gangs include Latin Kings, Crips, Trinitarios, Bloods, and Gangsta Disciples along with several cliques and provisional gangs associated with the named gangs. The named gangs have started provisional groups which attract younger youth from middle schools. Haverhill gangs are involved in home invasions, drug dealing, prostitution, and guns. Methuen gangs include Latin Gangsta Disciples (LGD), Gangsta Disciples, and Trinitarios primarily. The LGD and Trinitarios have been involved in several shootings throughout the city as well as drug dealing and firearm sales.

5-Year Trends in Youth Arrests (ages 10-24), 2020-2024



Changes in Youth Arrests for Simple Assault, Robbery, and Aggravated Assault

Arrest for simple assaults from 2020-2024 in...

- Massachusetts decreased 4%
- Haverhill/Methuen decreased 20%

Arrests for robberies from 2020-2024 in...

- Massachusetts decreased 40%
- Haverhill/Methuen increased 25%

Arrests for aggravated assaults from 2020-2024 in...

- Massachusetts decreased 4%
- Haverhill/Methuen decreased 27%

Source: National Incident Based Reporting System (NIBRS)

Further analytical work is needed to make an association between Shannon programming and declining arrests in focal communities.

Information contained in this report is from funding applications, reports supplied by the site, MA Department of Elementary and Secondary Education, US Census, MA Executive Office of Labor and Workforce Development, and Office of Grants and Research / Research Policy and Analysis Division. Special thanks to the Statewide Research Partner, Northeastern University, and the Crime and Justice Policy Lab of the University of Pennsylvania, for preparing this brief.

2024 CHARLES E. SHANNON COMMUNITY SAFETY INITIATIVE

HOLYOKE/CHICOPEE

Funded Partners: Chicopee Boys & Girls Club, Chicopee Police Department, Hampden County Sheriff's Department, Holyoke Boys & Girls Club, Holyoke Police Department, MassHire Holyoke, Pa'lante, The Center for Resilience

Funded by the Office of Grants and Research, a state agency that is part of the Executive Office of Public Safety and Security, the Charles E. Shannon Community Safety Initiative (Shannon) is modeled after the Office of Juvenile Justice and Delinquency Prevention's Comprehensive Gang Model. Shannon is a multi-sector approach used to address a community's gang and youth violence problem. Each community receiving Shannon funding demonstrates the presence of risk factors for youth and gang violence. Shannon participants must be between the ages of 10-24 years.

Strategies, Outcomes, and Funding Allocation

Total Funding: \$576,814.28

Strategies	Outcomes		Funding Allocation
Community Mobilization	<u>5,123</u> community members attended events, meetings, & presentations	<u>133</u> community events, meetings, & presentations held	\$132,474.84
Education & Employment	<u>14</u> youth participated in employment programs	<u>23</u> youth participated in education programs	\$38,249.39
Positive Youth Development & Recreation	<u>1,006</u> youth participated in recreation programs	<u>1,120</u> youth participated in youth development programs	\$231,408.01
Suppression	<u>76</u> hot spot patrols completed	<u>17</u> gang members/high impact players arrested	\$174,682.04

Youth Risk Assessments

4% LOW-RISK*	Youth in danger of engaging in risky behavior or gang activity.
55% MODERATE-RISK*	Youth exposed to the same risk factors as low-risk youth, as well as additional risk factors such as truancy.
41% HIGH-RISK*	Youth who are perpetrators or victims of shooting or stabbing violence, and/or are known gang members.

* % of youth assessed for risk

Success Highlight

"One of our Shannon participants is one of six children, with a single mother and grandmother in the home. After the class on vehicle maintenance, her mother's car would not start, preventing her mother from getting the kids off to school and herself to work. The youth remembered her lesson and was able to jump her mother's car with her grandmother's car. She came back to the program with such joy to be able to tell her story of getting her mother back on the road and everyone to school/work on time."

~Chicopee Police Department

Community Risk Factors

Massachusetts

Holyoke

Chicopee

Total Population (2023/2024 Estimates)	7,136,171	37,628	54,838
Population Lives in Poverty (2024)	10.4%	23.7%	15.2%
Unemployment Rate (2024)	3.4%	5.7%	4.6%
Total School Population (2023-2024)	966,726	5,360	7,661
Low-Income (2024-2025)	42.1%	83.6%	65.2%
High School Dropout Rate (2022-2023)	2.1%	4.2%	3.8%

Sources: www.census.gov/quickfacts; profiles.doe.mass.edu; <https://lmi.dua.eol.mass.gov/LMI/LaborForceAndUnemployment#>

Gang Activity in Holyoke/Chicopee

Residents and agencies are in agreement that the most serious issues affecting the neighborhoods are gangs. One of the key challenges is that Holyoke is a nexus of drug trafficking on the I-91 corridor, which continues to connect drugs from NYC to Northern Vermont. The national gangs, specifically, are engaged in trafficking via the I-91 corridor, creating challenges to the safety of the community and to our high-risk youth. Importantly, these gangs are also responsible for the distribution of fentanyl – usually via heroin sales – that are associated with extraordinary rates of overdoses in the communities. Of considerable concern are also the local gangs, which actively recruit juveniles at high rates and contribute to high levels of gang violence. Recruitment of youth into gangs is an issue in schools and on social media. We also continue to have problems with smaller crews and sets that are difficult to track but also represent major challenges to the communities. These groups tend to be less organized but engage in a range of illegal and illicit activities.

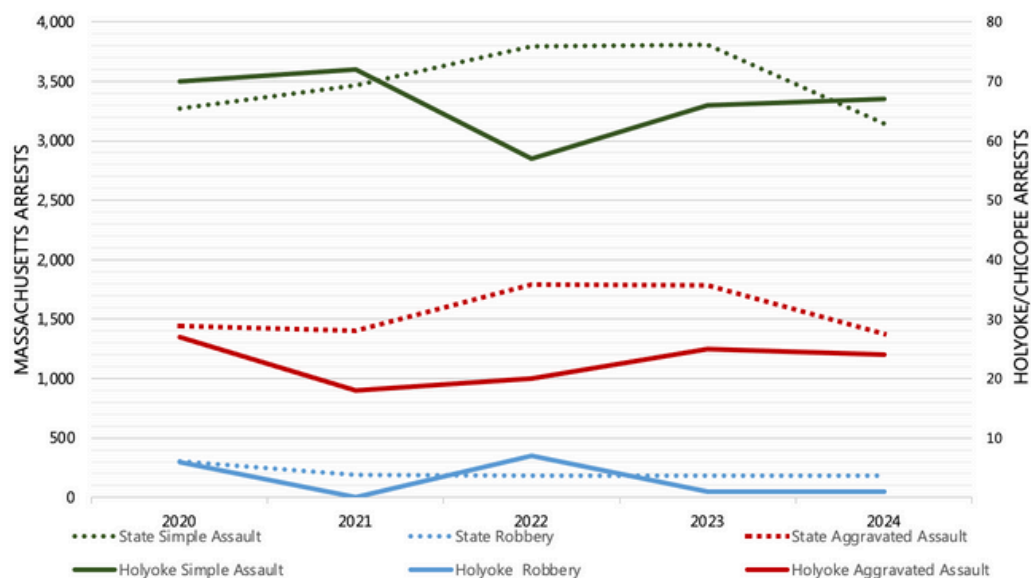
6

Street Gangs

300

Gang Members

5-Year Trends in Youth Arrests (ages 10-24), 2020-2024



Source: National Incident Based Reporting System (NIBRS)

Further analytical work is needed to make an association between Shannon programming and declining arrests in focal communities.

Changes in Youth Arrests for Simple Assault, Robbery, and Aggravated Assault

Arrests for simple assaults from 2020-2024 in...

- Massachusetts decreased 4%
- Holyoke/Chicopee decreased 4%

Arrests for robberies from 2020-2024 in...

- Massachusetts decreased 40%
- Holyoke/Chicopee decreased 83%

Arrests for aggravated assaults from 2020-2024 in...

- Massachusetts decreased 4%
- Holyoke/Chicopee decreased 11%

Information contained in this report is from funding applications, reports supplied by the site, MA Department of Elementary and Secondary Education, US Census, MA Executive Office of Labor and Workforce Development, and Office of Grants and Research / Research Policy and Analysis Division. Special thanks to the Statewide Research Partner, Northeastern University, and the Crime and Justice Policy Lab of the University of Pennsylvania, for preparing this brief.

2024 CHARLES E. SHANNON COMMUNITY SAFETY INITIATIVE LAWRENCE

Funded Partners: ACT Lawrence Inc., Boys & Girls Club of Lawrence, Change the Play Inc., Lawrence Family Development & Education Fund Inc., Lawrence Police Department, Merrimack Valley YMCA, Sueños Basketball, YWCA Northeastern Massachusetts

Funded by the Office of Grants and Research, a state agency that is part of the Executive Office of Public Safety and Security, the Charles E. Shannon Community Safety Initiative (Shannon) is modeled after the Office of Juvenile Justice and Delinquency Prevention's Comprehensive Gang Model. Shannon is a multi-sector approach used to address a community's gang and youth violence problem. Each community receiving Shannon funding demonstrates the presence of risk factors for youth and gang violence. Shannon participants must be between the ages of 10-24 years.

Strategies, Outcomes, and Funding Allocation

Total Funding: \$299,866.91

Strategies	Outcomes		Funding Allocation
Case Management, Street Outreach, or Intervention	<u>123</u> youth received case management services	<u>33</u> youth received street outreach services	\$28,500.00
Community Mobilization	<u>1,197</u> community members attended events, meetings, & presentations	<u>55</u> community events, meetings, & presentations held	\$13,500.00
Education & Employment	<u>264</u> youth participated in education programs	<u>159</u> youth participated in employment programs	\$46,500.00
Positive Youth Development & Recreation	<u>597</u> youth participated in recreation programs	<u>726</u> youth participated in youth development programs	\$157,446.76
Suppression	<u>187</u> hot spot patrols completed	<u>7</u> gang members/high impact players arrested	\$53,920.15

Youth Risk Assessments

26% LOW-RISK*	Youth in danger of engaging in risky behavior or gang activity.
48% MODERATE-RISK*	Youth exposed to the same risk factors as low-risk youth, as well as additional risk factors such as truancy.
26% HIGH-RISK*	Youth who are perpetrators or victims of shooting or stabbing violence, and/or are known gang members.

* % of youth assessed for risk

Success Highlight

"A young man was referred to SISU several years ago. His family is gang involved, but he was doing everything he could to avoid being drawn into the lifestyle. He was getting ready to graduate from high school and was interested in continuing his education, as well as learning music. The SISU team helped him enroll at Northern Essex Community College. He attends classes in the morning and works at SISU in the afternoon. He mastered the embroidery and screen printing shops and was soon teaching others. Over the summer, he was promoted to peer mentor and shop supervisor. He continues to serve as a role model to other SISU participants."

~ Lawrence Family Development & Education Fund, Inc.

Massachusetts Executive Office of Public Safety and Security, Secretary Terrence Reidy
Office of Grants and Research, Executive Director Kevin Stanton

To learn more visit: <https://www.mass.gov/info-details/shannon-community-safety-initiative-csi>

Community Risk Factors

Massachusetts

Lawrence

Total Population (2023/2024 Estimates)	7,136,171	88,172
Population Lives in Poverty (2024)	10.4%	18.2%
Unemployment Rate (2024)	3.4%	6.9%
Total School Population (2023-2024)	966,726	16,684
Low-Income (2024-2025)	42.1%	84.7%
High School Dropout Rate (2022-2023)	2.1%	3.3%

Sources: www.census.gov/quickfacts; profiles.doe.mass.edu; <https://lmi.dua.eol.mass.gov/LMI/LaborForceAndUnemployment#>

Gang Activity in Lawrence

7

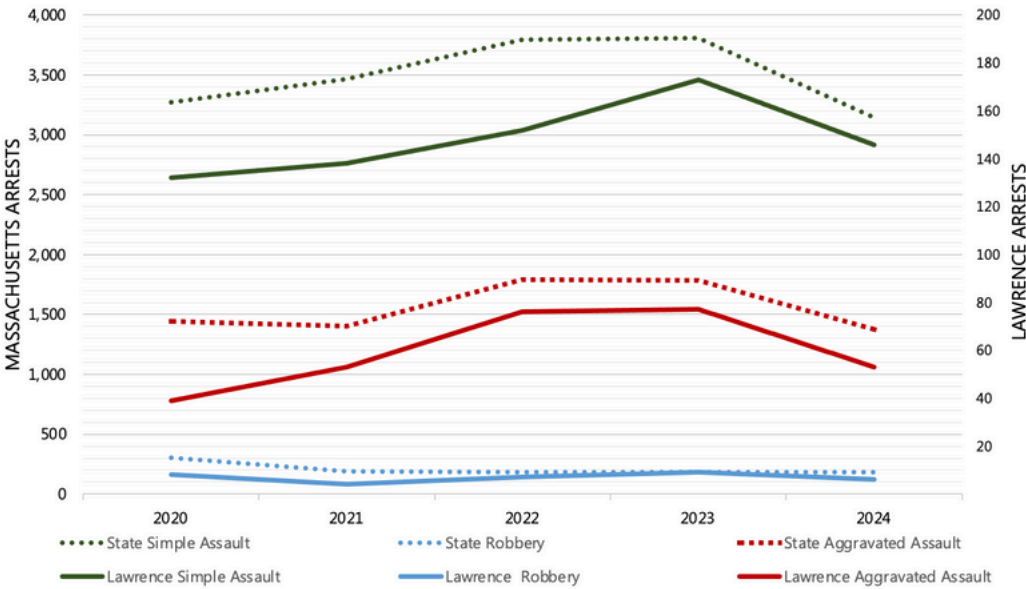
Street Gangs

500

Gang Members
Between the Ages
10-14

The Lawrence Police Department has confirmed the presence of at least seven active street gangs operating within the city. Additionally, there is concern over smaller, neighborhood-based gangs that may also be active. The total number of suspected, associated, and/or validated gang members is estimated to exceed 1,000 individuals, signaling a significant gang presence in the community. The presence of these gangs has been linked to a range of criminal activities including drug trafficking and distribution, robbery, motor vehicle theft, inter-gang violence including shootings, check forgery, and unlawful possession of firearms.

5-Year Trends in Youth Arrests (ages 10-24), 2020-2024



Changes in Youth Arrests for Simple Assault, Robbery, and Aggravated Assault

Arrests for simple assaults from 2020-2024 in...

- Massachusetts decreased 4%
- Lawrence decreased 16%

Arrests for robberies from 2020-2024 in...

- Massachusetts decreased 40%
- Lawrence decreased 25%

Arrests for aggravated assaults from 2020-2024 in...

- Massachusetts decreased 4%
- Lawrence increased 36%

Source: National Incident Based Reporting System (NIBRS)
Further analytical work is needed to make an association between Shannon programming and declining arrests in focal communities.

Information contained in this report is from funding applications, reports supplied by the site, MA Department of Elementary and Secondary Education, US Census, MA Executive Office of Labor and Workforce Development, and Office of Grants and Research / Research Policy and Analysis Division. Special thanks to the Statewide Research Partner, Northeastern University, and the Crime and Justice Policy Lab of the University of Pennsylvania, for preparing this brief.

2024 CHARLES E. SHANNON COMMUNITY SAFETY INITIATIVE

LOWELL

Funded Partners: Boys & Girls Club of Greater Lowell, Cambodian Mutual Assistance Association, Career Center of Lowell, Community Teamwork Inc - YouthBuild, Lowell Community Health Center, Lowell High School, Lowell Parks & Recreation, Lowell Police Department, UTEC, YWCA

Funded by the Office of Grants and Research, a state agency that is part of the Executive Office of Public Safety and Security, the Charles E. Shannon Community Safety Initiative (Shannon) is modeled after the Office of Juvenile Justice and Delinquency Prevention's Comprehensive Gang Model. Shannon is a multi-sector approach used to address a community's gang and youth violence problem. Each community receiving Shannon funding demonstrates the presence of risk factors for youth and gang violence. Shannon participants must be between the ages of 10-24 years.

Strategies, Outcomes, and Funding Allocation

Total Funding: \$761,325.27

Strategies	Outcomes		Funding Allocation
Case Management, Street Outreach, or Intervention	<u>157</u> youth received case management services	<u>157</u> case management goals achieved	\$61,999.80
Education & Employment	<u>264</u> youth participated in education programs	<u>182</u> youth participated in employment programs	\$223,565.20
Positive Youth Development & Recreation	<u>751</u> youth participated in recreation programs	<u>1,337</u> youth participated in youth development programs	\$268,263.31
Suppression	<u>308</u> hot spot patrols completed	<u>15</u> gang members/high impact players arrested	\$207,496.96

Youth Risk Assessments

88% LOW-RISK*	Youth in danger of engaging in risky behavior or gang activity.
9% MODERATE-RISK*	Youth exposed to the same risk factors as low-risk youth, as well as additional risk factors such as truancy.
3% HIGH-RISK*	Youth who are perpetrators or victims of shooting or stabbing violence, and/or are known gang members.

* % of youth assessed for risk

Success Highlight

"Our staff have been mentoring a young man who joined our summer youth internship program. During youth discussions, we learned that he had been involved in risky behaviors and gang violence. However, since then, he has continued to visit and confide in staff about the challenges he's facing. His mentor has done an excellent job guiding him through his options and helping him recognize positive opportunities. The real success here is that he has identified a positive adult role model in his life. When he attends programming, he is more likely to engage in constructive activities, marking an important step in his personal growth and making healthier choices."

~Lowell Community Health Center

Community Risk Factors

Massachusetts

Lowell

Total Population (2023/2024 Estimates)	7,136,171	114,296
Population Lives in Poverty (2024)	10.4%	16.0%
Unemployment Rate (2024)	3.4%	4.7%
Total School Population (2023-2024)	966,726	17,887
Low-Income (2024-2025)	42.1%	71.3%
High School Dropout Rate (2022-2023)	2.1%	4.5%

Sources: www.census.gov/quickfacts; profiles.doe.mass.edu; <https://lmi.dua.eol.mass.gov/LMI/LaborForceAndUnemployment#>

Gang Activity in Lowell

21

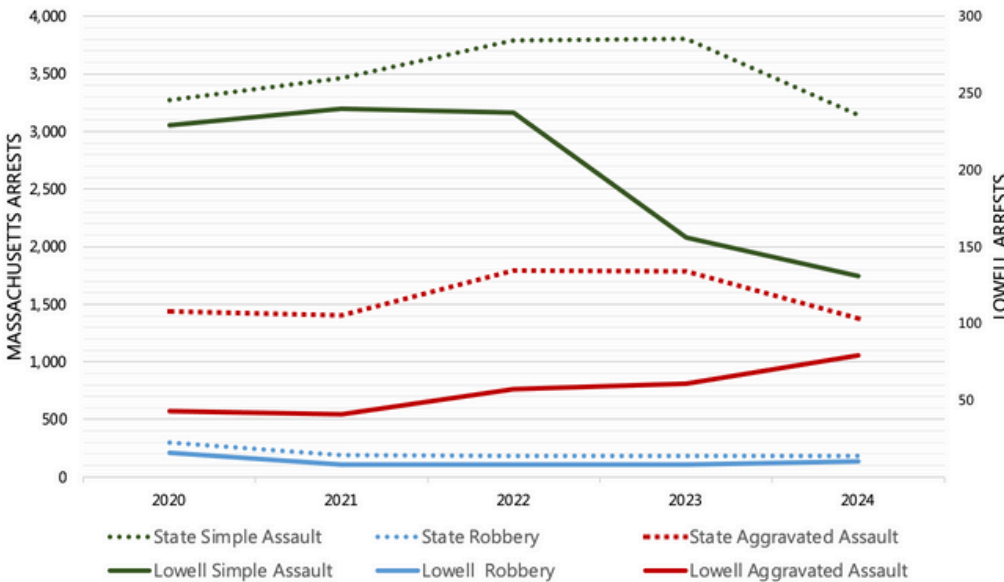
Street Gangs

300

Gang Members
between the Ages
of 10-24

There were 148 suspected gang-related incidents in Lowell from January 1, 2024-August 31, 2024, with 54% involving individuals within the Shannon age range (10-24). Members of these gangs are in their teens to late 20s and have been involved in shots fired incidents and multiple fights, particularly in the downtown area of the city during Lowell High School dismissal. Gang graffiti has also been spotted throughout the newly renovated Lowell High School. 20% of those gang-related incidents are considered serious crimes, including aggravated assaults, robberies, drug offenses, shots fired, and weapons offenses. Social media is used for recruitment as well as to sell marijuana, flash firearms, and encourage violence, such as "jumping" members.

5-Year Trends in Youth Arrests (ages 10-24), 2020-2024



Changes in Youth Arrests for Simple Assault, Robbery, and Aggravated Assault

Arrests for simple assaults from 2020-2024 in...

- Massachusetts decreased 4%
- Lowell decreased 32%

Arrests for robberies from 2020-2024 in...

- Massachusetts decreased 40%
- Lowell decreased 50%

Arrests for aggravated assaults from 2020-2024 in...

- Massachusetts decreased 4%
- Lowell increased 42%

Source: National Incident Based Reporting System (NIBRS)
Further analytical work is needed to make an association between Shannon programming and declining arrests in focal communities.

Information contained in this report is from funding applications, reports supplied by the site, MA Department of Elementary and Secondary Education, US Census, MA Executive Office of Labor and Workforce Development, and Office of Grants and Research / Research Policy and Analysis Division. Special thanks to the Statewide Research Partner, Northeastern University, and the Crime and Justice Policy Lab of the University of Pennsylvania, for preparing this brief.

2024 CHARLES E. SHANNON COMMUNITY SAFETY INITIATIVE

LYNN

Funded Partners: Catholic Charities North, DPW/Parks & Recreation, LifeScene, Lynn Police Department, Lynn Youth Street Outreach Advocacy (LYSOA)

Funded by the Office of Grants and Research, a state agency that is part of the Executive Office of Public Safety and Security, the Charles E. Shannon Community Safety Initiative (Shannon) is modeled after the Office of Juvenile Justice and Delinquency Prevention's Comprehensive Gang Model. Shannon is a multi-sector approach used to address a community's gang and youth violence problem. Each community receiving Shannon funding demonstrates the presence of risk factors for youth and gang violence. Shannon participants must be between the ages of 10-24 years.

Strategies, Outcomes, and Funding Allocation

Total Funding: \$416,722.03

Strategies	Outcomes		Funding Allocation
Case Management, Street Outreach, or Intervention	<u>49</u> youth received case management services	<u>178</u> youth received street outreach services	\$205,129.01
Community Mobilization	<u>350</u> community members attended events, meetings, & presentations	<u>11</u> community events, meetings, & presentations held	\$25,311.91
Education & Employment	<u>35</u> youth participated in subsidized year-round employment programs	<u>20</u> youth participated in subsidized summer employment programs	\$86,182.29
Positive Youth Development & Recreation	<u>663</u> youth participated in recreation programs	<u>33</u> youth participated in youth development programs	\$44,745.91
Suppression	<u>300</u> hot spot patrols completed	<u>15</u> gang members/high impact players arrested	\$55,352.90

Youth Risk Assessments

39% LOW-RISK*	Youth in danger of engaging in risky behavior or gang activity.
21% MODERATE-RISK*	Youth exposed to the same risk factors as low-risk youth, as well as additional risk factors such as truancy.
40% HIGH-RISK*	Youth who are perpetrators or victims of shooting or stabbing violence, and/or are known gang members.

* % of youth assessed for risk

Success Highlight

"There was a 16-year-old young man whose name was consistently brought up in the reports of fights at his school. We were told that this client was assumed to be the leader of a group of youth causing issues in the school. This client was placed on 24-hour home confinement with a GPS monitor as his condition of release. During this time, he was engaged in many positive activities and made significant accomplishments. This young man joined the basketball team at the local Boys and Girls Club and helped bring his team to victory in the final championships. He applied for jobs from the LYSOA office and even secured one at a community program, LifeScene. Since his case has been resolved, he is seeking to return to school and graduate."

~Lynn Youth Street Outreach Advocacy (LYSOA)

Community Risk Factors

Massachusetts

Lynn

Total Population (2023/2024 Estimates)	7,136,171	101,241
Population Lives in Poverty (2024)	10.4%	13.7%
Unemployment Rate (2024)	3.4%	4.4%
Total School Population (2023-2024)	966,726	18,733
Low-Income (2024-2025)	42.1%	73.9%
High School Dropout Rate (2022-2023)	2.1%	5.5%

Sources: www.census.gov/quickfacts; profiles.doe.mass.edu; <https://lmi.dua.eol.mass.gov/LMI/LaborForceAndUnemployment#>

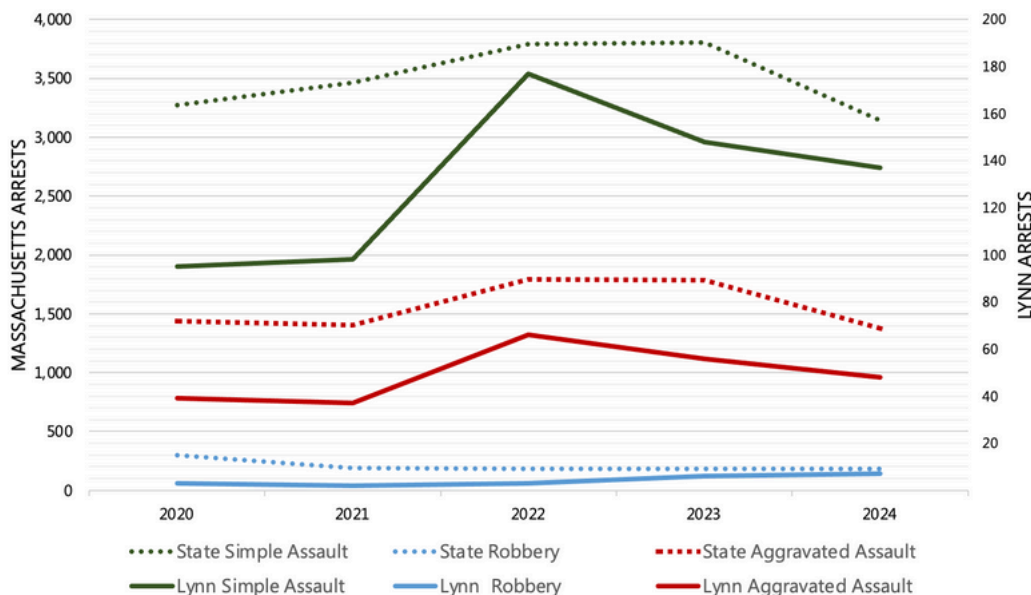
Gang Activity in Lynn

8-15
Street Gangs

150-200
Gang Members

Lynn's gang activity consists of murders, robberies, home invasions, shootings, stabbings, assaults, illegal drug and gun trafficking and sales, stolen cars, breaking & entering, credit card fraud, and laundering. Recruiting seems to be happening more in the junior high & high schools. About 90% of gang members are estimated to fall between the ages of 10-24.

5-Year Trends in Youth Arrests (ages 10-24), 2020-2024



Source: National Incident Based Reporting System (NIBRS)

Further analytical work is needed to make an association between Shannon programming and declining arrests in focal communities.

Changes in Youth Arrests for Simple Assault, Robbery, and Aggravated Assault

Arrests for simple assaults from 2020-2024 in...

- Massachusetts decreased 4%
- Lynn increased 44%

Arrests for robberies from 2020-2024 in...

- Massachusetts decreased 40%
- Lynn increased 133%

Arrests for aggravated assaults from 2020-2024 in...

- Massachusetts decreased 4%
- Lynn increased 23%

Information contained in this report is from funding applications, reports supplied by the site, MA Department of Elementary and Secondary Education, US Census, MA Executive Office of Labor and Workforce Development, and Office of Grants and Research / Research Policy and Analysis Division. Special thanks to the Statewide Research Partner, Northeastern University, and the Crime and Justice Policy Lab of the University of Pennsylvania, for preparing this brief.

2024 CHARLES E. SHANNON COMMUNITY SAFETY INITIATIVE

METRO MAYORS COALITION

Communities: Cambridge, Chelsea, Everett, Malden, Quincy, Revere, Somerville, Winthrop

Funded Partners: Braintree Police Department, Cambridge Community Art Center, Cambridge Police Department, Cambridge Youth Programs - City Peace, CAPIC - Revere PAL, Center for Teen Empowerment, Chelsea Police Department, City of Chelsea - Jordan Boys & Girls Club, City of Malden, Everett Police Department, Malden Police Department, Malden/Mystic Valley YMCA, North Suffolk Community Services (Youth Mental Health Initiative), Quincy Police Department, Quincy Recreation Department, Revere Police Department, ROCA Inc., Somerville Police Department, Winthrop Community Against Substance Abuse (CASA), Winthrop Police Department

Funded by the Office of Grants and Research, a state agency that is part of the Executive Office of Public Safety and Security, the Charles E. Shannon Community Safety Initiative (Shannon) is modeled after the Office of Juvenile Justice and Delinquency Prevention's Comprehensive Gang Model. Shannon is a multi-sector approach used to address a community's gang and youth violence problem. Each community receiving Shannon funding demonstrates the presence of risk factors for youth and gang violence. Shannon participants must be between the ages of 10-24 years.

Strategies, Outcomes, and Funding Allocation

Total Funding: \$786,070.91*

Strategies	Outcomes		Funding Allocation
Case Management, Street Outreach, or Intervention	<u>42</u> youth received case management services	<u>50</u> youth received street outreach services	\$68,984.49
Community Mobilization	<u>1,637</u> community members attended events, meetings, & presentations	<u>241</u> community events, meetings, & presentations held	\$53,416.08
Education & Employment	<u>50</u> youth participated in employment programs	<u>64</u> youth participated in education programs	\$107,173.48
Positive Youth Development & Recreation	<u>1,611</u> youth participated in recreation programs	<u>1,689</u> youth participated in youth development programs	\$304,420.62
Suppression	<u>1,114</u> hot spot patrols completed	<u>78</u> law enforcement home visits	\$123,981.50

*In 2024, \$128,094.74 was allocated to administrative/other costs for the site.

Youth Risk Assessments

59% LOW-RISK*	Youth in danger of engaging in risky behavior or gang activity.
31% MODERATE-RISK*	Youth exposed to the same risk factors as low-risk youth, as well as additional risk factors such as truancy.
10% HIGH-RISK*	Youth who are perpetrators or victims of shooting or stabbing violence, and/or are known gang members.

* % of youth assessed for risk

Success Highlight

"One young man found joy from connecting with peers and engaging in collaboration. He came to the Art Center withdrawn and restless. This isolation increased and contributed to his feelings of anxiety and hopelessness. In the past, he had been hospitalized for growing mental health concerns. Once he joined the Art Center's Teen Media Program, he began connecting with his peers and instructor. He joined in on discourse and collaboration, which gave him a sense of purpose and passion. He finally broke out of his shell and lowered his defenses. For this young man, the Art Center was more than a space to participate in the Arts; it was pivotal in restoring his sense of belonging and community and instilled in him hope for the future."

~Cambridge Community Art Center

Community Risk Factors

	Massachusetts	Cambridge	Chelsea	Everett	Malden	Quincy	Revere	Somerville	Winthrop
Total Population (2024/2023 Estimate)	7,136,171	118,214	38,319	50,318	65,133	101,597	57,954	80,407	18,319
Population Lives in Poverty (2024)	10.4%	12.4%	20.6%	15.4%	13.3%	11.4%	12.4%	10.1%	7.1%
Unemployment Rate (2024)	3.4%	2.9%	4.0%	3.3%	3.7%	3.7%	4.1%	3.2%	3.3%
Total School Population (2023-2024)	966,726	9,070	7,277	8,298	7,224	9,866	8,788	5,614	2,110
Low-Income (2023-2024)	42.1%	36.4%	78.9%	72.2%	61.2%	47.5%	66.1%	46.8%	36.3%
High School Dropout Rate (2022-2023)	2.1%	0.8%	5.5%	4.8%	3.0%	1.7%	4.6%	2.0%	1.5%

Sources: www.census.gov/quickfacts; profiles.doe.mass.edu; <https://lmi.dua.eol.mass.gov/LMI/LaborForceAndUnemployment#>

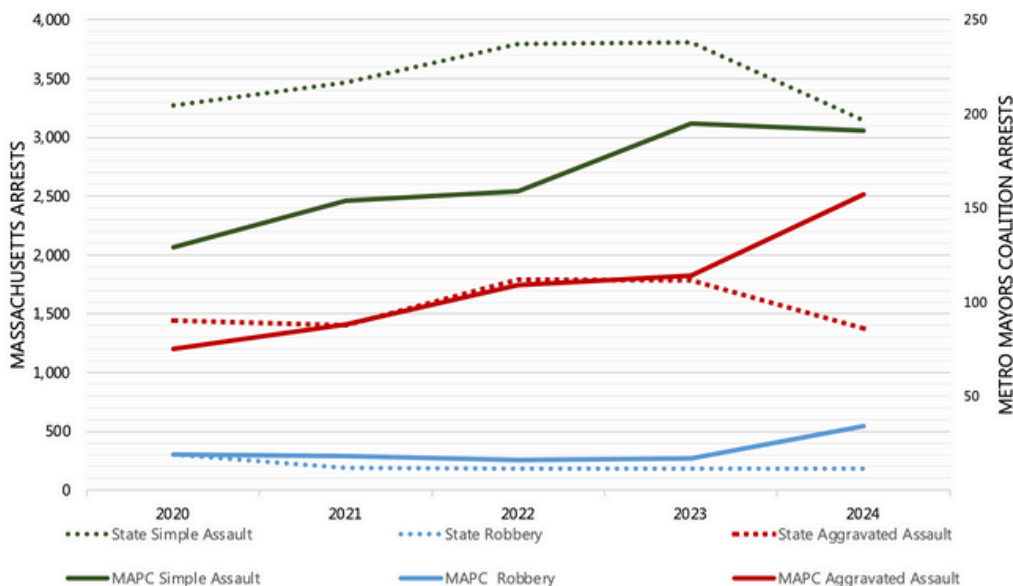
Gang Activity in Metro Mayors Coalition

Approximately 33
Gangs across MAPC
sites

Approximately 203
Gang Members
Between the Ages
10-24

Crimes committed by gangs include firearms offenses, assaults, shootings, homicides, burglaries, motor vehicle theft, and drug offenses (especially involving fentanyl). Several communities documented the continued use of social media by gang members to broadcast activities online for recruitment purposes and narcotic distribution. Many communities are also continuing to see activity spill over from larger neighboring cities. The gangs reported across the coalition include Maplewood, Port 44, East Side Money Gang, GOA, Cape Verdean Outlaws, Wendover, Heath Street, H Block, NOB, 250 Broadway, 10 Yeamans, Coolidge St, 18th Street, MS-13, 1700, Riverside, Eastville / MP45 / 480, 22s, Young Bloods, Bloods, Maverick St. (East Boston), and Latin Kings. Somerville and Cambridge do not gather gang-related data.

5-Year Trends in Youth Arrests (ages 10-24), 2020-2024



Source: National Incident Based Reporting System (NIBRS)

Further analytical work is needed to make an association between Shannon programming and declining arrests in focal communities.

Changes in Youth Arrests for Simple Assault, Robbery, and Aggravated Assault

Arrests for simple assaults from 2020-2024 in...

- Massachusetts decreased 4%
- Metro Mayors Coalition increased 48%

Arrests for robberies from 2020-2024 in...

- Massachusetts decreased 40%
- Metro Mayors Coalition increased 79%

Arrests for aggravated assaults from 2020-2024 in...

- Massachusetts decreased 4%
- Metro Mayors Coalition increased 109%

Information contained in this report is from funding applications, reports supplied by the site, MA Department of Elementary and Secondary Education, US Census, MA Executive Office of Labor and Workforce Development, and Office of Grants and Research / Research Policy and Analysis Division. Special thanks to the Statewide Research Partner, Northeastern University, and the Crime and Justice Policy Lab of the University of Pennsylvania, for preparing this brief.

2024 CHARLES E. SHANNON COMMUNITY SAFETY INITIATIVE

NEW BEDFORD

Funded Partners: Bristol County District Attorney's Office, New Bedford Police Department, NorthStar Learning Center

Funded by the Office of Grants and Research, a state agency that is part of the Executive Office of Public Safety and Security, the Charles E. Shannon Community Safety Initiative (Shannon) is modeled after the Office of Juvenile Justice and Delinquency Prevention's Comprehensive Gang Model. Shannon is a multi-sector approach used to address a community's gang and youth violence problem. Each community receiving Shannon funding demonstrates the presence of risk factors for youth and gang violence. Shannon participants must be between the ages of 10-24 years.

Strategies, Outcomes, and Funding Allocation

Total Funding: \$1,138,983.45

Strategies	Outcomes		Funding Allocation
Case Management, Street Outreach, or Intervention	<u>307</u> youth received case management services	<u>241</u> case management goals achieved	\$363,113.38
Community Mobilization	<u>17,362</u> community members attended events, meetings, & presentations	<u>334</u> community events, meetings, & presentations held	\$181,556.69
Education & Employment	<u>29</u> youth participated in employment programs	<u>62</u> youth participated in education programs	\$181,556.69
Positive Youth Development & Recreation	<u>109</u> youth who developed leadership skills	<u>137</u> youth participated in youth development programs	\$181,556.69
Suppression	<u>95</u> hot spot patrols completed	<u>67</u> gang members/high-impact players arrested	\$231,200.00

Youth Risk Assessments

42%
LOW-RISK* Youth in danger of engaging in risky behavior or gang activity.

29%
MODERATE-RISK* Youth exposed to the same risk factors as low-risk youth, as well as additional risk factors such as truancy.

29%
HIGH-RISK* Youth who are perpetrators or victims of shooting or stabbing violence, and/or are known gang members.

* % of youth assessed for risk

Success Highlight

"We have a participant in the program who is currently enrolled in an alternative school. He initially struggled with his behavior and getting his school work done, but since his participation in the Shannon Program, he is now getting all A's and B's and is also completing his goal of transferring to New Bedford High School."

~NorthStar Learning Center

Community Risk Factors

Massachusetts

New Bedford

Total Population (2023/2024 Estimates)	7,136,171	100,695
Population Lives in Poverty (2024)	10.4%	19.9%
Unemployment Rate (2024)	3.4%	5.7%
Total School Population (2023-2024)	966,726	15,585
Low-Income (2024-2025)	42.1%	78.9%
High School Dropout Rate (2022-2023)	2.1%	4.2%

Sources: www.census.gov/quickfacts; profiles.doe.mass.edu; <https://lmi.dua.eol.mass.gov/LMI/LaborForceAndUnemployment#>

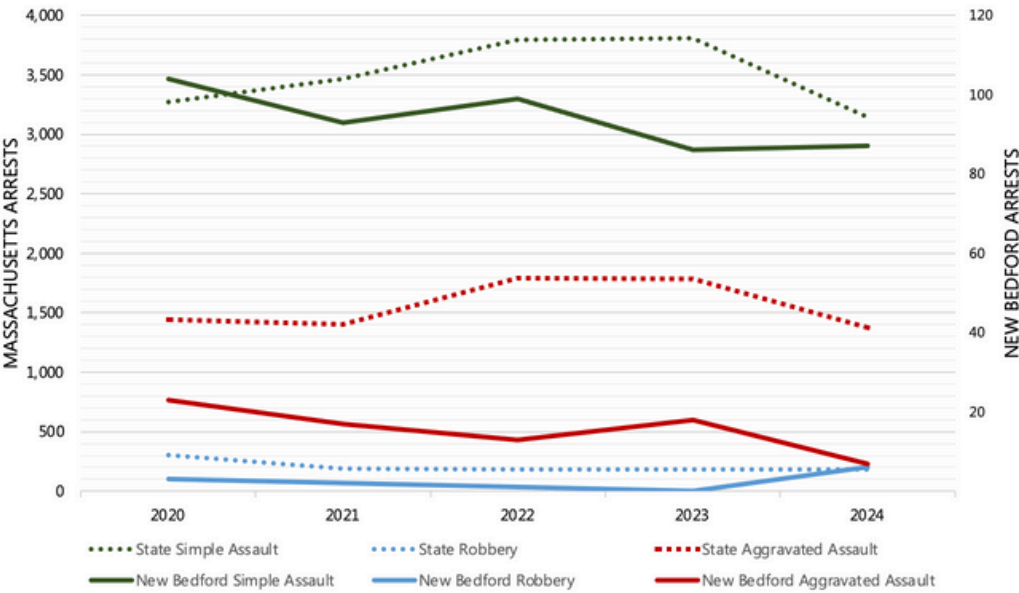
Gang Activity in New Bedford

21
Street Gangs

67
Gang Members
between the Ages
of 10-24

New Bedford gangs are increasingly recruiting young members ages 10-14. Youth are recruited to carry weapons and drugs and have been instrumental in several shootings in our community. There is concern that these youth are using substances that continue to interfere with their decision-making skills. In terms of types of violence committed by gangs in New Bedford, gang retaliation has slowed, but car thefts have picked up. Active gangs in the area seem to be focused most on making money and continuing to recruit younger youth.

5-Year Trends in Youth Arrests (ages 10-24), 2020-2024



Changes in Youth Arrests for Simple Assault, Robbery, and Aggravated Assault

Arrests for simple assaults from 2020-2024 in...

- Massachusetts decreased 4%
- New Bedford decreased 16%

Arrests for robberies from 2020-2024 in...

- Massachusetts decreased 40%
- New Bedford increased 100%

Arrests for aggravated assaults from 2020-2024 in...

- Massachusetts decreased 4%
- New Bedford decreased 70%

Source: National Incident Based Reporting System (NIBRS)
Further analytical work is needed to make an association between Shannon programming and declining arrests in focal communities.

Information contained in this report is from funding applications, reports supplied by the site, MA Department of Elementary and Secondary Education, US Census, MA Executive Office of Labor and Workforce Development, and Office of Grants and Research / Research Policy and Analysis Division. Special thanks to the Statewide Research Partner, Northeastern University, and the Crime and Justice Policy Lab of the University of Pennsylvania, for preparing this brief.

2024 CHARLES E. SHANNON COMMUNITY SAFETY INITIATIVE PITTSFIELD

Funded Partners: 18 Degrees - Pittsfield Community Connections, Pittsfield Police Department

Funded by the Office of Grants and Research, a state agency that is part of the Executive Office of Public Safety and Security, the Charles E. Shannon Community Safety Initiative (Shannon) is modeled after the Office of Juvenile Justice and Delinquency Prevention's Comprehensive Gang Model. Shannon is a multi-sector approach used to address a community's gang and youth violence problem. Each community receiving Shannon funding demonstrates the presence of risk factors for youth and gang violence. Shannon participants must be between the ages of 10-24 years.

Strategies, Outcomes, and Funding Allocation

Total Funding: \$409,382.80

Strategies	Outcomes		Funding Allocation
Case Management, Street Outreach, or Intervention	<u>108</u> youth received case management services	<u>12</u> street outreach deployments to interrupt retaliation or mediate a situation	\$194,691.40
Community Mobilization	<u>590</u> community members attended events, meetings, & presentations	<u>67</u> community events, meetings, & presentations held	\$97,345.70
Positive Youth Development & Recreation	<u>106</u> youth participated in recreation programs	<u>96</u> youth participated in youth development programs	\$97,345.70
Suppression	<u>21</u> hot spot patrols completed		\$20,000.00

Youth Risk Assessments

61% LOW-RISK*	Youth in danger of engaging in risky behavior or gang activity.
35% MODERATE-RISK*	Youth exposed to the same risk factors as low-risk youth, as well as additional risk factors such as truancy.
4% HIGH-RISK*	Youth who are perpetrators or victims of shooting or stabbing violence, and/or are known gang members.

* % of youth assessed for risk

Success Highlight

"A program participant successfully started college at Berkshire Community College in September. With the support of case management, this young adult ensured schoolwork and workload were managed and successfully passed their first college courses. The participant was able to maintain a full-time job at a local nursing home while completing college courses. In addition, they began engaging with the agency clinician to support their mental health."
~ 18 Degrees - Pittsfield Community Correction

Community Risk Factors

Massachusetts

Pittsfield

Total Population (2023/2024 Estimates)	7,136,171	43,076
Population Lives in Poverty (2024)	10.4%	13.6%
Unemployment Rate (2024)	3.4%	4.0%
Total School Population (2023-2024)	966,726	5,544
Low-Income (2024-2025)	42.1%	64.6%
High School Dropout Rate (2022-2023)	2.1%	2.7%

Sources: www.census.gov/quickfacts; profiles.doe.mass.edu; <https://lmi.dua.eol.mass.gov/LMI/LaborForceAndUnemployment#>

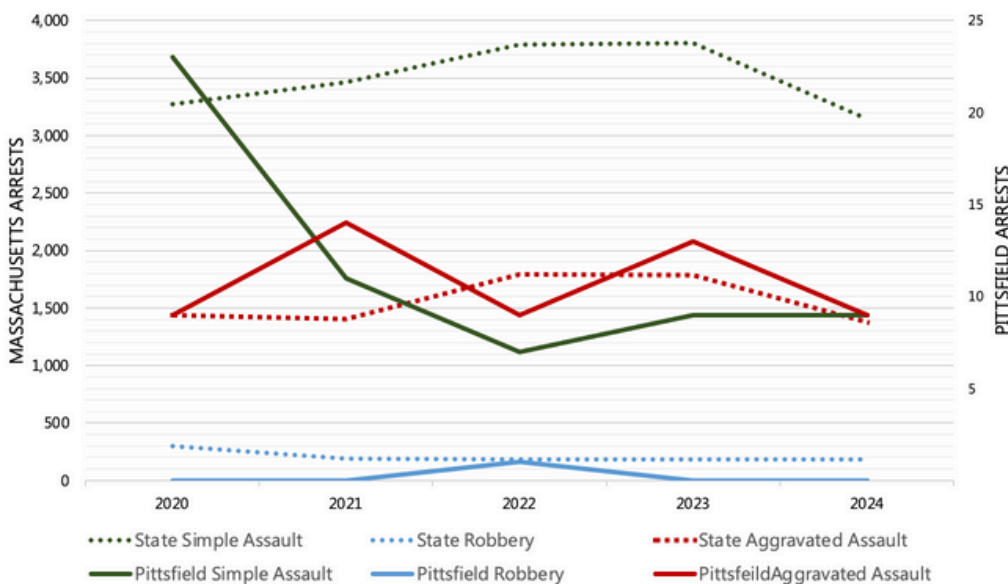
Gang Activity in Pittsfield

2-7
Active Gangs

20-100
Gang Members
between the Ages
of 10-24

Membership numbers are rough estimates based on a recent group/gang audit and interviews with Pittsfield Police Department detectives and community partners. Officers and community members noted that many group-associated individuals in Pittsfield will claim Blood or Crip affiliations, but these affiliations are loose and shift often. In addition to those affiliations, youth have formed neighborhood groups that change often. Youth, specifically, have more fluid associations, and conflicts among young group members are more often sparked in online venues. There are very few incidents of gang-on-gang conflict over territory, as conflict among associated members largely involves personal disputes and drug-related disputes/robberies that lead to serious gun violence.

5-Year Trends in Youth Arrests (ages 10-24), 2020-2024



Source: National Incident Based Reporting System (NIBRS)

Further analytical work is needed to make an association between Shannon programming and declining arrests in focal communities.

Changes in Youth Arrests for Simple Assault, Robbery, and Aggravated Assault

Arrests for simple assaults from 2020-2024 in...

- Massachusetts decreased 4%
- Pittsfield decreased 61%

Arrests for robberies from 2020-2024 in...

- Massachusetts decreased 40%
- Pittsfield increased 0%

Arrests for aggravated assaults from 2020-2024 in...

- Massachusetts decreased 4%
- Pittsfield increased 0%

Information contained in this report is from funding applications, reports supplied by the site, MA Department of Elementary and Secondary Education, US Census, MA Executive Office of Labor and Workforce Development, and Office of Grants and Research / Research Policy and Analysis Division. Special thanks to the Statewide Research Partner, Northeastern University, and the Crime and Justice Policy Lab of the University of Pennsylvania, for preparing this brief.

2024 CHARLES E. SHANNON COMMUNITY SAFETY INITIATIVE SPRINGFIELD

Funded Partners: COGIC Family Services, Greater New Life Christian Center, Martin Luther King Jr. Family Services, New North Citizens' Council, Regreen Springfield, Shoot Hoops C3, South End Community Center, Springfield Boys & Girls Club, Springfield Boys & Girls Club Family Center, Springfield Police Department, The Mission Inc., The Salvation Army, YMCA Dunbar, YWCA of Western Massachusetts

Funded by the Office of Grants and Research, a state agency that is part of the Executive Office of Public Safety and Security, the Charles E. Shannon Community Safety Initiative (Shannon) is modeled after the Office of Juvenile Justice and Delinquency Prevention's Comprehensive Gang Model. Shannon is a multi-sector approach used to address a community's gang and youth violence problem. Each community receiving Shannon funding demonstrates the presence of risk factors for youth and gang violence. Shannon participants must be between the ages of 10-24 years.

Strategies, Outcomes, and Funding Allocation

Total Funding: \$1,247,411.92

Strategies	Outcomes		Funding Allocation
Case Management, Street Outreach, or Intervention	<u>131</u> youth received case management services	<u>166</u> youth received street outreach services	\$150,760.00
Community Mobilization	<u>5,410</u> community members attended events, meetings, & presentations	<u>73</u> community events, meetings, & presentations held	\$11,200.00
Education & Employment	<u>230</u> youth participated in employment programs	<u>1,051</u> youth participated in education programs	\$248,755.12
Positive Youth Development & Recreation	<u>1,690</u> youth participated in recreation programs	<u>1,568</u> youth participated in youth development programs	\$412,576.75
Suppression	<u>79</u> hot spot patrols completed	<u>163</u> gang members/high-impact players arrested	\$424,120.05

Youth Risk Assessments

13% LOW-RISK*	Youth in danger of engaging in risky behavior or gang activity.
47% MODERATE-RISK*	Youth exposed to the same risk factors as low-risk youth, as well as additional risk factors such as truancy.
40% HIGH-RISK*	Youth who are perpetrators or victims of shooting or stabbing violence, and/or are known gang members.

* % of youth assessed for risk

Success Highlight

"We had a club member in our program that was stealing our supplies. We notified her parents and kept her out of the club for a couple of weeks. When she returned, she had to sit down with the staff and discuss what she did. She earned her way back to being a full-time member and started helping out around the club. She signed up for our jr. staff program but was not selected in the first group. She kept helping out around the club, and when it was time to hire jr. staff for the second round, she made the cut. The teen director stated that she is the top performer of the second group thus far. We are proud of her, and the staff have selected her to run for our youth of the year."
~Springfield Boys & Girls Club

Community Risk Factors

	Massachusetts	Springfield
Total Population (2023/2024 Estimates)	7,136,171	153,672
Population Lives in Poverty (2024)	10.4%	25.3%
Unemployment Rate (2024)	3.4%	6.4%
Total School Population (2023-2024)	966,726	27,278
Low-Income (2024-2025)	42.1%	83.9%
High School Dropout Rate (2022-2023)	2.1%	4.0%

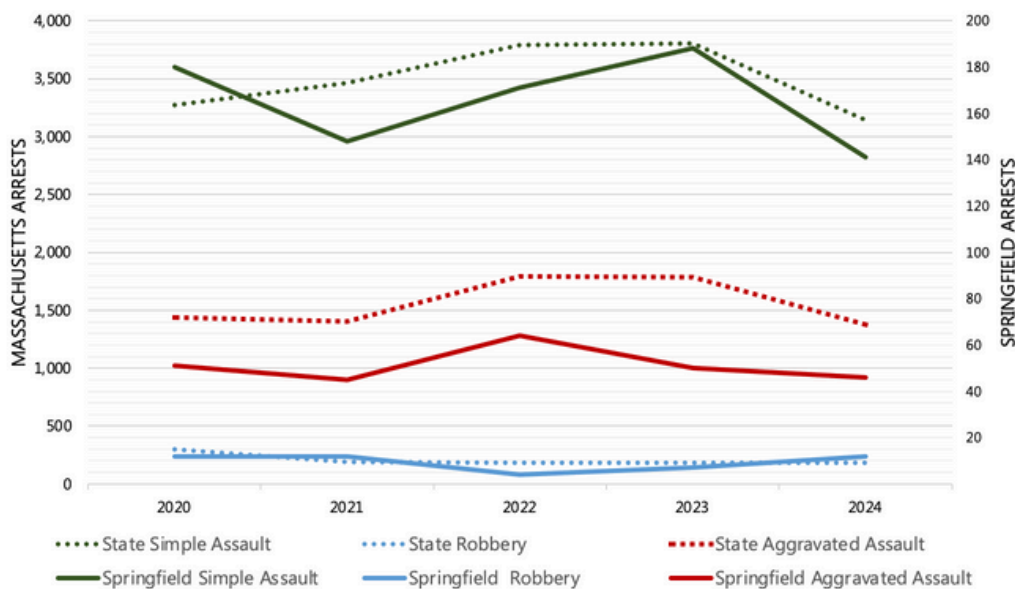
Sources: www.census.gov/quickfacts; profiles.doe.mass.edu; <https://lmi.dua.eol.mass.gov/LMI/LaborForceAndUnemployment#>

Gang Activity in Springfield

63
Street Gangs
1,000-1,200
Gang Members
between the Ages
of 10-24

The gang activity within the City of Springfield has been changing in recent years. There has been a rise in gun violence since 2019. Local gangs are the most violent, whereas the national-based gangs try to stay off the radar with the intent of making as much money as possible. Recruitment for these gangs happens all over the city through social media, jail/prison/DYS sentences, the school systems, or the neighborhood in which individuals reside. Individuals with gang involvement continue to be involved in narcotics distribution, sex trafficking, armed carjackings, armed/unarmed robberies, shootings, police pursuits, and homicides. Many of the inter-gang conflicts stem from gang members' social media presence. Gang members use social media as a tool to identify where opposing gang members are located to commit acts of violence.

5-Year Trends in Youth Arrests (ages 10-24), 2020-2024



Source: National Incident Based Reporting System (NIBRS)

Further analytical work is needed to make an association between Shannon programming and declining arrests in focal communities.

Changes in Youth Arrests for Simple Assault, Robbery, and Aggravated Assault

Arrests for simple assaults from 2020-2024 in...

- Massachusetts decreased 4%
- Springfield decreased 22%

Arrests for robberies from 2020-2024 in...

- Massachusetts decreased 40%
- Springfield increased 0%

Arrests for aggravated assaults from 2020-2024 in...

- Massachusetts increased 4%
- Springfield decreased 10%

Information contained in this report is from funding applications, reports supplied by the site, MA Department of Elementary and Secondary Education, US Census, MA Executive Office of Labor and Workforce Development, and Office of Grants and Research / Research Policy and Analysis Division. Special thanks to the Statewide Research Partner, Northeastern University, and the Crime and Justice Policy Lab of the University of Pennsylvania, for preparing this brief.

2024 CHARLES E. SHANNON COMMUNITY SAFETY INITIATIVE

TAUNTON

Funded Partners: Taunton Housing Authority, Taunton Police Department

Funded by the Office of Grants and Research, a state agency that is part of the Executive Office of Public Safety and Security, the Charles E. Shannon Community Safety Initiative (Shannon) is modeled after the Office of Juvenile Justice and Delinquency Prevention's Comprehensive Gang Model. Shannon is a multi-sector approach used to address a community's gang and youth violence problem. Each community receiving Shannon funding demonstrates the presence of risk factors for youth and gang violence. Shannon participants must be between the ages of 10-24 years.

Strategies, Outcomes, and Funding Allocation

Total Funding: \$131,720.70*

Strategies	Outcomes		Funding Allocation
Case Management, Street Outreach, or Intervention	64 youth received case management services	64 case management goals achieved	\$32,268.95
Positive Youth Development & Recreation	59 youth participated in recreation programs	59 youth participated in youth development programs	\$48,403.43
Suppression	5 law enforcement supported ride-alongs	1 gang members/high-impact players arrested	\$9,000.00

*In 2024, \$42,048.32 was allocated to administrative/other costs for the site.

Youth Risk Assessments

- 100%
LOW-RISK*

Youth in danger of engaging in risky behavior or gang activity.
- 0%
MODERATE-RISK*

Youth exposed to the same risk factors as low-risk youth, as well as additional risk factors such as truancy.
- 0%
HIGH-RISK*

Youth who are perpetrators or victims of shooting or stabbing violence, and/or are known gang members.

* % of youth assessed for risk

Success Highlight

“The hiring of a second youth/family worker for the Taunton Housing Authority working out of Bristol Commons Family Complex allowed Taunton to expand its reach to more at-risk youth.”
~Taunton Site Manager

Community Risk Factors

Massachusetts

Taunton

Total Population (2023/2024 Estimates)	7,136,171	60,412
Population Lives in Poverty (2024)	10.4%	13.7%
Unemployment Rate (2024)	3.4%	4.6%
Total School Population (2023-2024)	966,726	8,877
Low-Income (2024-2025)	42.1%	58.6%
High School Dropout Rate (2022-2023)	2.1%	2.6%

Sources: www.census.gov/quickfacts; profiles.doe.mass.edu; <https://lmi.dua.eol.mass.gov/LMI/LaborForceAndUnemployment#>

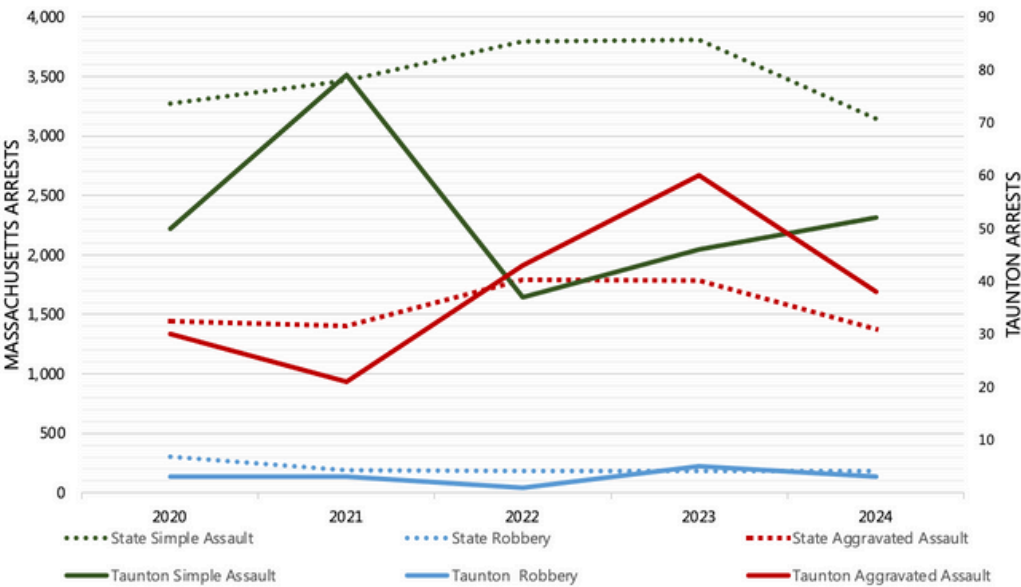
Gang Activity in Taunton

6
Street Gangs

55
Gang Members
Between the Ages
of 10-24

Gang activity in Taunton covers a wide range of activities, including disorderly conduct, assault and battery with/without a dangerous weapon, home invasion, murder, larceny of a motor vehicle, illegal possession of a firearm, illegal possession of ammo, drug use, drug dealing, and drug trafficking. Much of the gang violence in Taunton occurs at an inter-gang level.

5-Year Trends in Youth Arrests (ages 10-24), 2020-2024



Changes in Youth Arrests for Simple Assault, Robbery, and Aggravated Assault

Arrests for simple assaults from 2020-2024 in...

- Massachusetts decreased 4%
- Taunton increased 4%

Arrests for robberies from 2020-2024 in...

- Massachusetts decreased 40%
- Taunton increased 0%

Arrests for aggravated assaults from 2020-2024 in...

- Massachusetts decreased 4%
- Taunton increased 27%

Source: National Incident Based Reporting System (NIBRS)
Further analytical work is needed to make an association between Shannon programming and declining arrests in focal communities.

Information contained in this report is from funding applications, reports supplied by the site, MA Department of Elementary and Secondary Education, US Census, MA Executive Office of Labor and Workforce Development, and Office of Grants and Research / Research Policy and Analysis Division. Special thanks to the Statewide Research Partner, Northeastern University, and the Crime and Justice Policy Lab of the University of Pennsylvania, for preparing this brief.

2024 CHARLES E. SHANNON COMMUNITY SAFETY INITIATIVE WORCESTER

Funded Partners: Amateur Athletic Association/Fitness & Wellness, Big Brothers Big Sisters of Central Massachusetts & Metrowest, Boys & Girls Club of Worcester, Extreme Kid Inc., St. Bernard's Church/Our Lady of Providence Parish, The Torch Foundation, Worcester Community Action Council, Worcester Police Department, Worcester Youth Center Inc., Worcester Youth Violence Prevention Initiative, Yes We Care Inc., You Inc./Seven Hills Foundation

Funded by the Office of Grants and Research, a state agency that is part of the Executive Office of Public Safety and Security, the Charles E. Shannon Community Safety Initiative (Shannon) is modeled after the Office of Juvenile Justice and Delinquency Prevention's Comprehensive Gang Model. Shannon is a multi-sector approach used to address a community's gang and youth violence problem. Each community receiving Shannon funding demonstrates the presence of risk factors for youth and gang violence. Shannon participants must be between the ages of 10-24 years.

Strategies, Outcomes, and Funding Allocation

Total Funding: \$1,249,043.89*

Strategies	Outcomes		Funding Allocation
Case Management, Street Outreach, or Intervention	<u>189</u> youth received case management services	<u>427</u> case management goals achieved	\$259,257.34
Community Mobilization	<u>328</u> community members attended events, meetings, & presentations	<u>16</u> community events, meetings, & presentations held	\$40,000.00
Education & Employment	<u>299</u> youth participated in employment programs	<u>195</u> youth participated in education programs	\$340,130.81
Positive Youth Development & Recreation	<u>645</u> youth participated in recreation programs	<u>331</u> youth participated in youth development programs	\$400,772.07
Suppression	<u>58</u> hot spot patrols completed	<u>14</u> gang members/high-impact players arrested	\$138,150.08

*In 2024, \$70,733.59 was allocated to administrative/other costs for the site.

Youth Risk Assessments

- 46%
LOW-RISK* Youth in danger of engaging in risky behavior or gang activity.
- 25%
MODERATE-RISK* Youth exposed to the same risk factors as low-risk youth, as well as additional risk factors such as truancy.
- 29%
HIGH-RISK* Youth who are perpetrators or victims of shooting or stabbing violence, and/or are known gang members.

* % of youth assessed for risk

Success Highlight

"SMARTT case manager was assigned to a 16 y/o male who was suspected to be gang affiliated. He was referred to the program by his alternative school after he brought a knife onto school property at his home school. Since he was referred, he has participated in more than two years of subsidized employment programming. He is now about to turn 18 and has been doing incredibly well. He has been attending therapy and support groups, where he has gained coping mechanisms to help him deal with stress. While working within our subsidized employment programming, he opened a bank account and has been able to put money away for a vehicle. His case manager has signed him up for Drivers Ed, and he will be driving soon. He is currently set to graduate and is working with his guidance counselor and SMARTT case manager to discern the next steps towards his bright future."

~Worcester Community Action Council

Massachusetts Executive Office of Public Safety and Security, Secretary Terrence Reidy
Office of Grants and Research, Executive Director Kevin Stanton
To learn more visit: <https://www.mass.gov/info-details/shannon-community-safety-initiative-csi>

Community Risk Factors

Massachusetts

Worcester

Total Population (2023/2024 Estimates)	7,136,171	207,621
Population Lives in Poverty (2024)	10.4%	19.8%
Unemployment Rate (2024)	3.4%	4.4%
Total School Population (2023-2024)	966,726	28,636
Low-Income (2024-2025)	42.1%	71.9%
High School Dropout Rate (2022-2023)	2.1%	3.1%

Sources: www.census.gov/quickfacts; profiles.doe.mass.edu; <https://lmi.dua.eol.mass.gov/LMI/LaborForceAndUnemployment#>

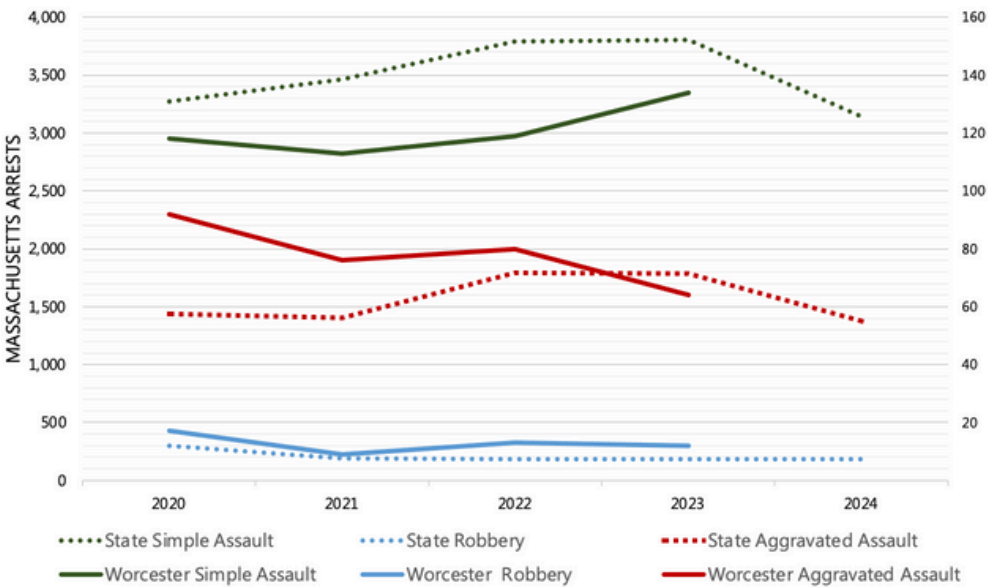
Gang Activity in Worcester

23
Street Gangs

291
Gang Members
Between the Ages
10-24

Worcester Police Department (WPD) observed that gang activity has changed in response to current societal influences and law enforcement pressures. At present, there are 23 active gangs documented in the city, including city-wide gangs (9), national gangs (8), neighborhood-level gangs (5), and regional gangs (1). Collectively, membership among the active gangs is estimated to be 1,451, with actual levels likely to be greater. Approximately 20% of gang membership is composed of individuals under 25 years of age. Gangs frequently claim control over specific territory in the community, wear distinctive dress and colors, and may communicate through graffiti and hand signs, among other means. WPD also recognizes non-traditional or hybrid gangs that may lack symbols, turf, or identifiable leaders.

5-Year Trends in Youth Arrests (ages 10-24), 2020-2024



Changes in Youth Arrests for Simple Assault, Robbery, and Aggravated Assault*

- Arrests for simple assaults from 2020-2024 in...
- Massachusetts decreased 4%
 - Worcester increased 14% (2020-2023)
- Arrests for robberies from 2020-2024 in...
- Massachusetts decreased 40%
 - Worcester decreased 29% (2020-2023)
- Arrests for aggravated assaults from 2020-2024 in...
- Massachusetts decreased 4%
 - Worcester decreased 30% (2020-2023)

Source: National Incident Based Reporting System (NIBRS)
Further analytical work is needed to make an association between Shannon programming and declining arrests in focal communities.

*NIBRS data from Worcester is not available for 2024.

Information contained in this report is from funding applications, reports supplied by the site, MA Department of Elementary and Secondary Education, US Census, MA Executive Office of Labor and Workforce Development, and Office of Grants and Research / Research Policy and Analysis Division. Special thanks to the Statewide Research Partner, Northeastern University, and the Crime and Justice Policy Lab of the University of Pennsylvania, for preparing this brief.

2024 CHARLES E. SHANNON COMMUNITY SAFETY INITIATIVE MASSACHUSETTS

Funded Communities: Boston, Brockton, Fall River, Fitchburg/Gardner, Haverhill/Methuen, Holyoke/Chicopee, Lawrence, Lowell, Lynn, Metro Mayors Coalition (Cambridge, Chelsea, Everett, Malden, Quincy, Revere, Somerville, Winthrop), New Bedford, Pittsfield, Springfield, Taunton, Worcester

Funded by the Office of Grants and Research, a state agency that is part of the Executive Office of Public Safety and Security, the Charles E. Shannon Community Safety Initiative (Shannon) is modeled after the Office of Juvenile Justice and Delinquency Prevention's Comprehensive Gang Model. Shannon is a multi-sector approach used to address a community's gang and youth violence problem. Each community receiving Shannon funding demonstrates the presence of risk factors for youth and gang violence. Shannon participants must be between the ages of 10-24 years. In 2024, Shannon awarded \$10.9 million to 15 sites that provide services across 24 Massachusetts communities. Funding supported positive youth development, recreation, case management, street outreach, education, employment, targeted suppression, and community mobilization programs. Additionally, Shannon funded the equivalent of approximately 157 full-time positions to strategically address youth gang violence within these communities.

Strategies, Outcomes, and Funding Allocation

Total Funding: \$10,883,351.61*

Strategies	Outcomes		Funding Allocation
Case Management, Street Outreach, or Intervention	<u>3,588</u> youth received case management services	<u>1,124</u> youth received street outreach services	\$2,208,128.23
Community Mobilization	<u>50,954</u> community members attended events, meetings, & presentations	<u>1,493</u> community events, meetings, & presentations held	\$932,324.23
Education & Employment	<u>2,826</u> youth participated in employment programs	<u>5,766</u> youth participated in education programs	\$1,854,041.76
Positive Youth Development & Recreation	<u>11,452</u> youth participated in recreation programs	<u>11,069</u> youth participated in youth development programs	\$3,252,377.44
Suppression	<u>4,214</u> hot spot patrols completed	<u>350</u> gang members/high-impact players arrested	\$2,051,642.61

*Statewide, \$584,837.35 was allocated to administrative/other costs in 2024 across the Shannon sites.

Youth Risk Assessments

49% LOW-RISK*	Youth in danger of engaging in risky behavior or gang activity.
32% MODERATE-RISK*	Youth exposed to the same risk factors as low-risk youth, as well as additional risk factors such as truancy.
19% HIGH-RISK*	Youth who are perpetrators or victims of shooting or stabbing violence, and/or are known gang members.

* % of youth assessed for risk

Success Highlight

"Youth and families have a different image of law enforcement because they have the opportunity to see police in a different capacity and they can see that the officers genuinely care about the youth."

~ Shoot Hoops C3, Shannon Springfield Site

Shannon Community Risk Factors 2024*

	Total Population (state estimate as of July 1, 2024, all other estimates as of July 1, 2023)	Population Lives in Poverty (2020-2024)	Unemployment Rate (2024)	Total School Population (2023-2024)	Low-Income (2024-2025)	High School Dropout Rate (2022-2023) *2024 data has not yet been released
Massachusetts	7,136,171	10.4%	3.4%	966,726	42.1%	2.1%
Boston	653,833	16.9%	3.7%	66,220	70.1%	4.5%
Brockton	104,890	13.9%	5.0%	16,997	74.0%	5.9%
Fall River	93,840	20.9%	5.8%	14,054	78.3%	5.0%
Fitchburg	41,579	15.5%	5.5%	6,371	71.5%	2.0%
Gardner	20,974	14.3%	4.5%	2,952	63.0%	2.7%
Haverhill	67,415	10.6%	4.1%	9,524	61.0	4.3%
Methuen	53,455	8.2%	4.4%	7,875	54.3%	2.0%
Holyoke	37,628	23.7%	5.7%	5,360	83.6%	4.2%
Chicopee	54,838	15.2%	4.6%	7,661	65.2%	3.8%
Lawrence	88,172	18.2%	6.9%	16,684	84.7%	3.3%
Lowell	114,296	16.0%	4.7%	17,887	71.3%	4.5%
Lynn	101,241	13.7%	4.4%	18,733	73.9%	5.5%
Cambridge	118,214	12.4%	2.9%	9,070	36.4%	0.8%
Chelsea	38,319	20.6%	4.0%	7,277	78.9%	5.5%
Everett	50,318	15.4%	3.3%	8,298	72.2%	4.8
Malden	65,133	13.3%	3.7%	7,224	61.2%	3.0%
Quincy	101,597	11.4%	3.7%	9,866	47.5%	1.7%
Revere	57,954	12.4%	4.1%	8,788	66.1%	4.6%
Somerville	80,407	10.1%	3.2%	5,614	46.8%	2.0%
Winthrop	18,319	7.1%	3.3%	2,110	36.3%	1.5%
New Bedford	100,695	19.9%	5.7%	15,585	78.9%	4.2%
Pittsfield	43,076	13.6%	4.0%	5,544	64.6%	2.7%
Springfield	153,672	25.3%	6.4%	27,278	83.9%	4.0%
Taunton	60,412	13.7%	4.6%	8,877	58.6%	2.6%
Worcester	207,621	19.8%	4.4%	28,636	71.9%	3.1%

* Shading in chart groups communities by the 15 Shannon sites.

Sources: www.census.gov/quickfacts; profiles.doe.mass.edu; <https://lmi.dua.eol.mass.gov/LMI/LaborForceAndUnemployment#>

Gang Activity in Massachusetts

380+
Street Gangs

Data on gang members under the age of 25 was not available from all police departments. For police departments that had available data, an estimated 4,120 gang members between the ages of 10-24 were identified.

10,180+
Active Gang
Members

Across the state, gangs/crews were primarily involved in drug trafficking, associated violence, carrying weapons, and property damage. Notably, social media was used to flash gang/crew membership and recruit new, younger members. Many at-risk youths were targeted to carry out gang/crew operations because of their advantageous juvenile status.

Information contained in this report is from funding applications, reports supplied by the site, MA Department of Elementary and Secondary Education, US Census, MA Executive Office of Labor and Workforce Development, and Office of Grants and Research / Research Policy and Analysis Division. Special thanks to the Statewide Research Partner, Northeastern University, and the Crime and Justice Policy Lab of the University of Pennsylvania, for preparing this brief.

Putting Shannon Dollars to Work to Reduce Youth and Gang Violence

\$10.9 Million Investment

145 Partners
at 15 Sites

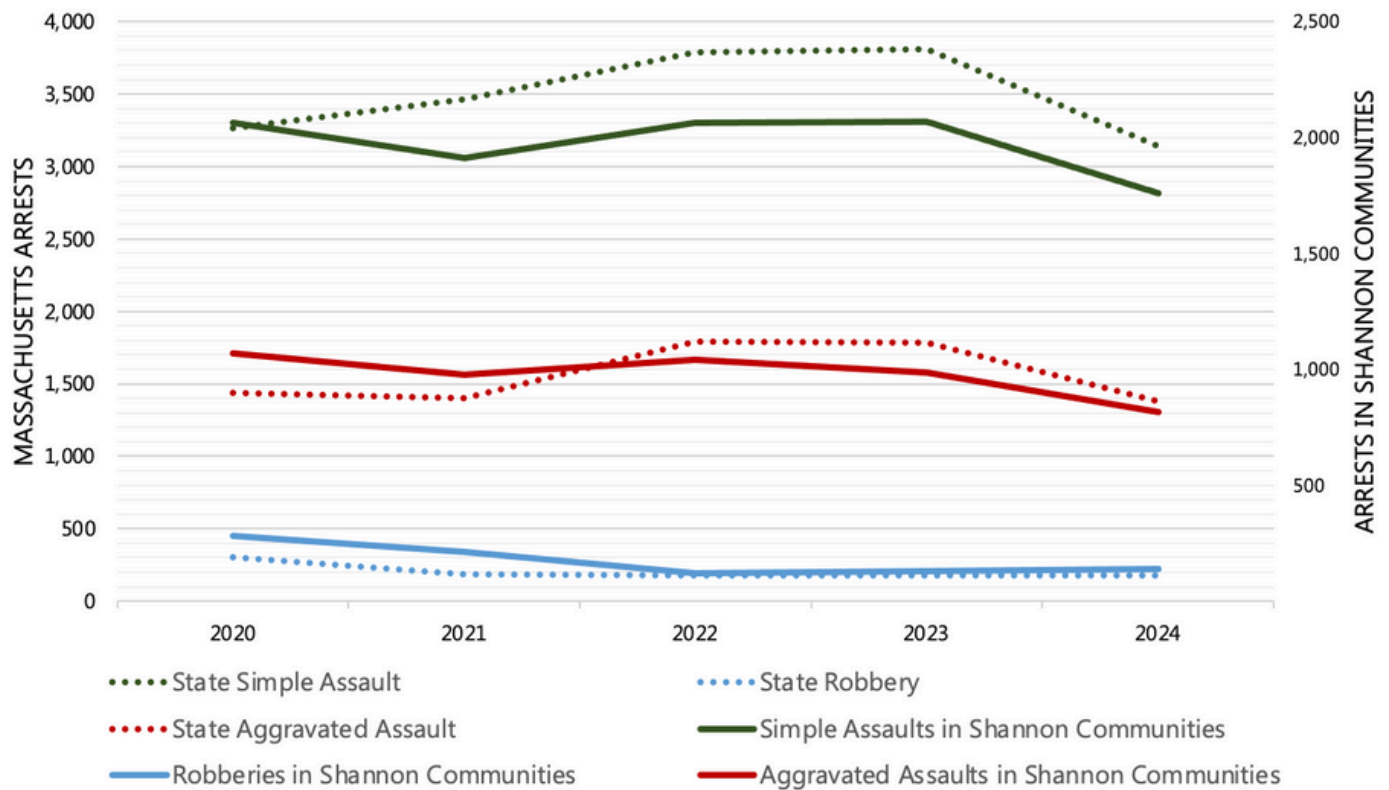
\$468.62 invested per youth in
Case Management, Street
Outreach, or Intervention Efforts



28,251 total youth served,
averaging \$385.24 invested per
youth across all services

\$180.60 invested per youth in
Education or Employment Efforts

5-Year Trends in Youth Arrests (ages 10-24), 2020-2024



Source: National Incident Based Reporting System (NIBRS)

Further analytical work is needed to make an association between Shannon programming and declining arrests in focal communities.

Changes in Youth Arrests for Simple Assault, Robbery, and Aggravated Assault

Arrests for simple assaults in...

- Massachusetts decreased 4%
- Shannon communities decreased 15%

Arrests for robberies in...

- Massachusetts decreased 40%
- Shannon communities decreased 52%

Arrests for aggravated assaults in...

- Massachusetts decreased 4%
- Shannon communities decreased 24%

Overview of the Office of Juvenile Justice and Delinquency Prevention Comprehensive Gang Model

The Commonwealth of Massachusetts' Shannon Community Safety Initiative (Shannon CSI) is a multi-sector, data-driven approach modeled after the Office of Juvenile Justice and Delinquency Prevention's Comprehensive Gang Model. After completing a community needs assessment, Shannon funded communities, in collaboration with steering committees, develop strategies in the following five areas:

Positive Youth Development & Recreation*



Positive Youth Development and Recreation Programs provide a prosocial outlet for youth to expand and enhance their interests, skills, and abilities. These programs are safe havens for recreational, enrichment, educational and prevention activities outside school hours (i.e., athletics and physical fitness, school achievement initiatives).

Case Management, Street Outreach, or Intervention



Case Management Street Outreach or Intervention programs for gang involved and proven risk youth reach out and act as links to gang-involved youth, their families, and other traditional social service providers. For high-risk youth and at-risk youth, social intervention programs can include drop-in recreation, positive youth development, and other mechanisms to reach young people and connect them to positive adults and constructive activities.

Education & Employment



Education and Employment Programs provide education, training, and employment opportunities to youth at high-risk for youth violence and gang involvement.

Suppression



Suppression programs include close supervision or monitoring of gang involved youth and other high impact players by police, prosecutors, probation officers, and other officers of the court. These programs include hotspot patrols, law-enforcement home visits, ride-alongs, re-entry, and special prosecutors.

Community Mobilization



Community Mobilization Programs educate community members about local gang and youth violence trends, as well as involving community members in strategies to confront the problem.

Two additional funded components of Shannon CSI include the Local Action Research Partners (LARPs), and the Statewide Youth Violence Research Partner (SRP). LARPs assist funded sites by providing strategic, analytic, technical, and research support. The SRP assists all funded Shannon CSI communities, LARPs and the Office of Grants and Research by providing strategic, analytic, and research support. Together the LARPs and SRP inform funded communities about best practices to maximize the effectiveness of the Shannon CSI.