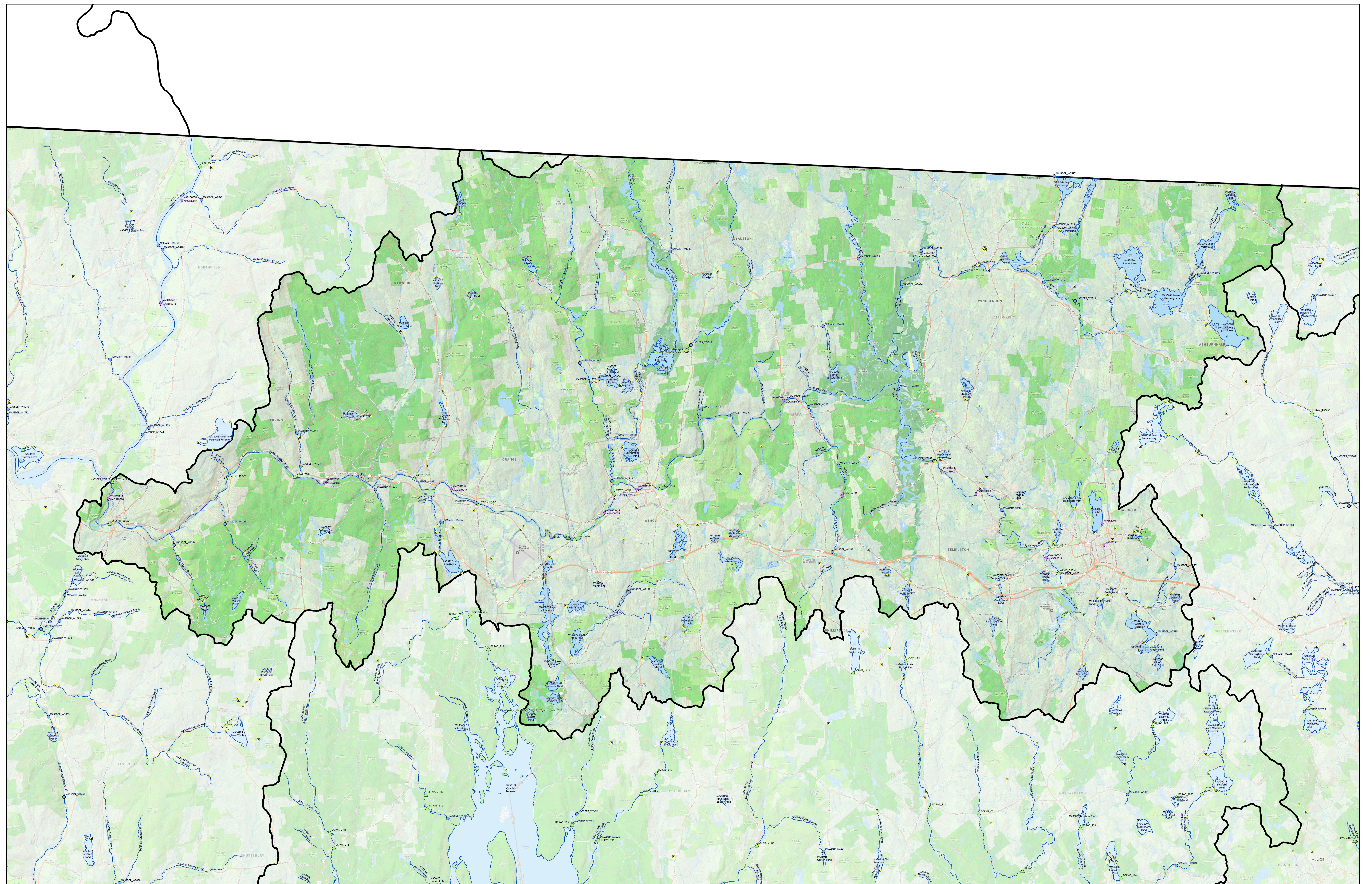
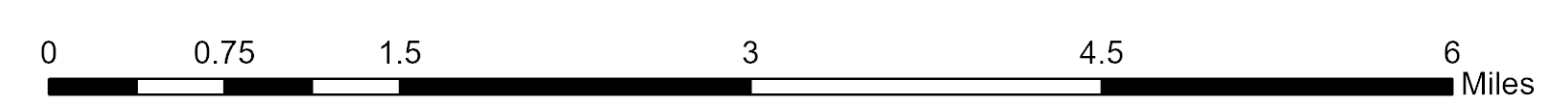


# 2024 / 2026 Integrated Report Millers River Basin Drainage Area Map



This map was constructed using information obtained from the MassDEP Watershed Planning Program (WPP), MassDEP GIS, Mass Office of Dam Safety, and MassDPH, and depicts water quality monitoring station data used in the 2024/2026 IR and select infrastructure features affecting water quality.

\*Locations shown on this map are based on coordinates provided by the originating group, are provided for informational purposes only, and do not reflect the extent of use of the associated data by WPP in its Clean Water Act Integrated Reported (305(b), 314, 303(d) use attainment decisions).



**Legend**

- ▲ External Water Quality Stations\*
- WPP Water Quality Stations
- Dams
- 2024/2026 River AUs
- 2024/2026 Lake/Estuary AUs
- CSO Outfalls
- ◆ NPDES Discharges
- Watershed Outlines
- Beaches

