



---

# FY 2027 Uniform Polling Hours Cost Certification Survey Overview

Office of the State Auditor  
Division of Local Mandates

June 11, 2025

---

# What is the Uniform Polling Hours Law?

St. 1983, c. 503

Increased the # of hours that polling locations are required to be open for state elections, from **10 hours** to **13 hours**

# What is the purpose of this cost certification survey?

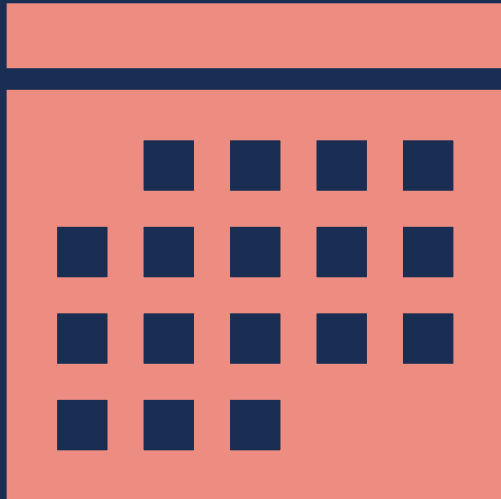


Uniform Polling Hours refers to ***the required additional three hours of polling operations at the beginning of each election day for each presidential and state primary and general election, as applicable for a given fiscal year.***



DLM manages a certification process for “the incremental costs attributed to [the Uniform Polling Hours Law] and estimated to be incurred by each city and town in the next fiscal year” for each presidential primary, state primary, and general election.

# Cost Certification Schedule



## Regularly Scheduled September and November State Elections

- Every odd calendar year.
- **Ex.** Estimated additional costs for the 2026 state elections (FY 2027) will be collected in summer 2025.

## Presidential Primaries

- Every four calendar years (in even years between presidential election years).
- **Ex.** Estimated additional costs for the 2028 presidential primary (FY 2028) will be collected in summer 2026.

# Cost Certification Timeline: FY 2027 State Elections



**Tentative Survey Launch Date:** June 11, 2025



Covers state elections covered in **FY 2027** – the **September 2026** state primary and the **November 2026** general election



Submissions due **July 2, 2025**

Information as of June 11, 2025, and subject to change. For general informational purposes only; it does not constitute legal or other professional advice.

# Section C: Estimated Expenses for Election Workers and Public Safety Personnel

## Information to report in Section C includes:

- Estimated compensation for election workers (including temporary workers and regular employees)
- Estimated compensation for public safety personnel (including police and constables)

Expenses must be for work and workers **essential** to polling operations and attributable to the first three hours of polling operations.

**Notes:** Do not enter estimated compensation expenses or hours for employees who will be working their regular number of hours or regular shift, or who will be working excess hours but receiving their regular compensation. Shifting regular employees' hours to cover the first three hours of polling operations will not in and of itself result in additional or increased expenses.

# Section D: Other Expenses

- All other estimated additional or increased expenses should be entered in Section D.
- All estimated expenses must be for work and workers essential to polling operations.
- All estimated expenses must be specifically attributable to the additional first three hours of polling operations.
- Please provide as much information as possible for any estimated expenses submitted in Section D to explain why the expenses are specifically attributable to the additional first three hours of polling operations.

# — Expenses NOT Eligible for Certification



**Early voting costs** (not covered by this survey)



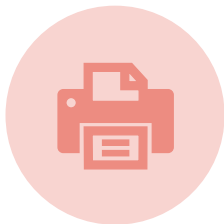
**Meals and travel expenses** (optional expenses)



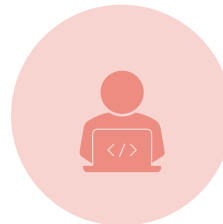
**Signage** (incidental local administration expense)



**Costs for training of poll workers** (not specific to the first three hours of polling operations)



**Printing of voter lists** (not specific to the first three hours of polling operations)



**Voting machine programming** (not specific to the first three hours of polling operations)



# Disbursement of Funds



Certifications are sent to the Secretary's office to begin the disbursement process.



UPH funds are treated differently than early voting funds:

*May be deposited in a special revenue fund and may be expended without further appropriation*

*Are not added to free cash*

*Must be spent on election expenses*

# UPH Cost Certification FAQs

**<https://www.mass.gov/info-details/uniform-polling-hours-cost-certification-faqs>**

**FAQs are continuously updated.**

**Link provided in the chat.  
Please bookmark!**

# Next Webinar

**Please join us for our virtual  
office hours:**

**Wednesday, July 9, 2025,  
12PM – 2PM**

# Contact Us

**Email:**

**[DLM.CostCertification@  
MassAuditor.gov](mailto:DLM.CostCertification@MassAuditor.gov)**

**Office Number:  
(617) 727-0980**