

Livestock Inspection

Dr. Margaret Gabour
Assistant State Veterinarian
margaret.gabour@mass.gov

December 2025

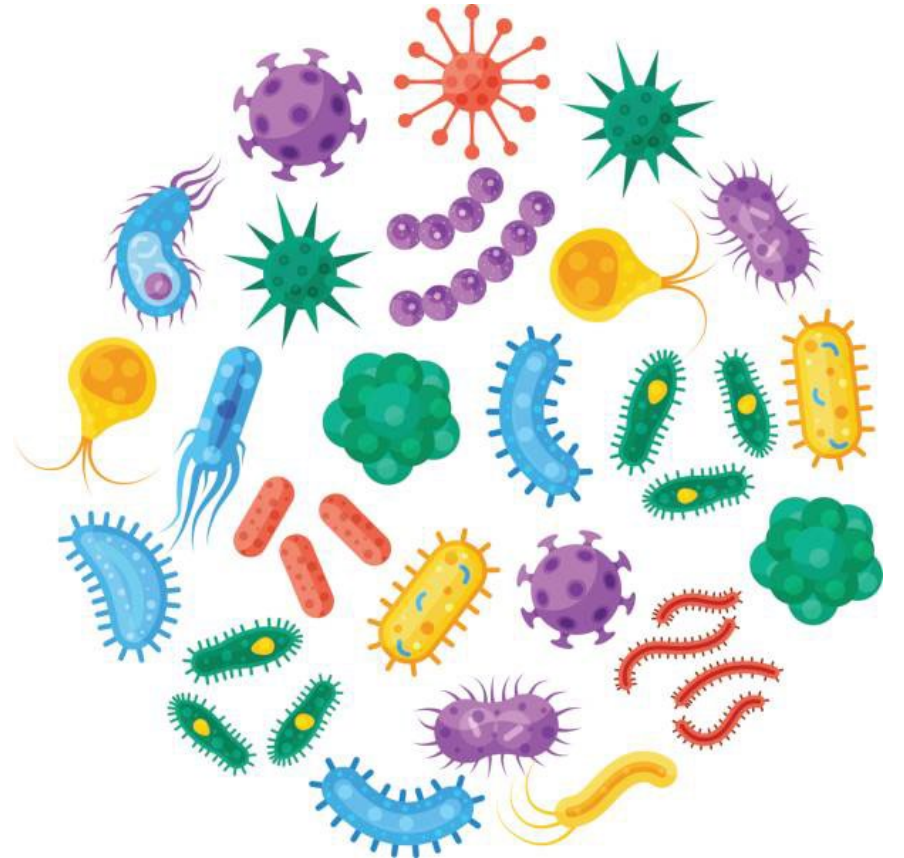


Division of Animal Health

Livestock Inspection – Presentation Topics

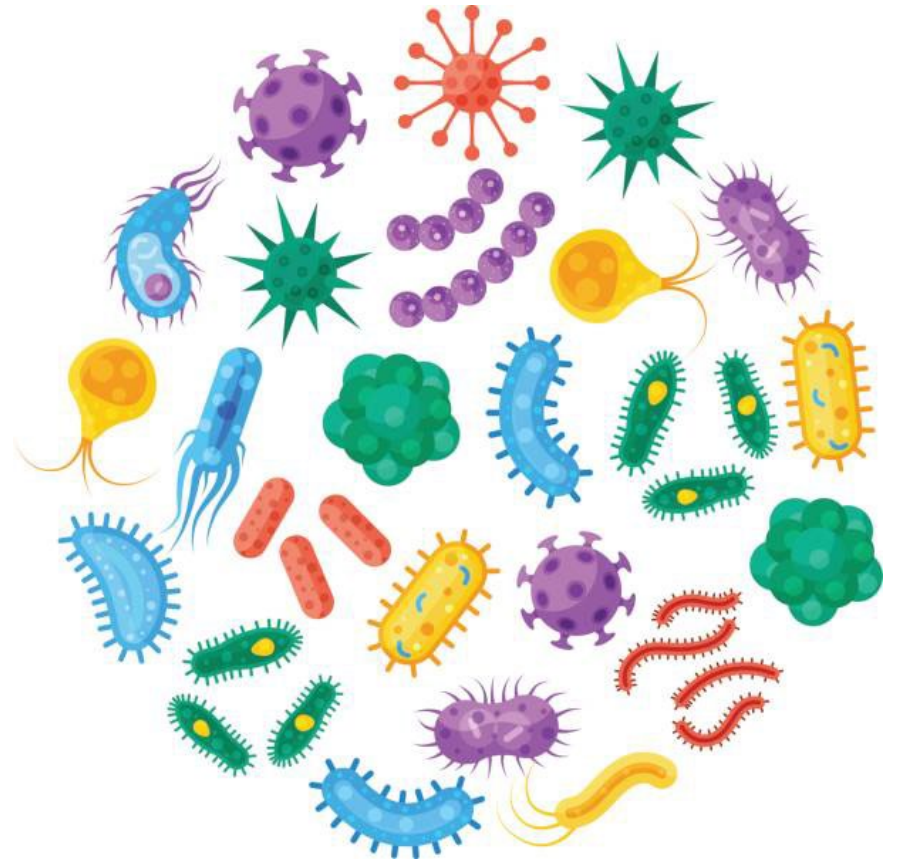
- Purpose of Inspection
- Biosecurity
- Basic husbandry
- Signs of disease
- Thin animals
- Disease Topics

All images found online



Purpose of Inspection

- Inventory- how many of each species
 - Emergency planning – know where those animals are in cases of disease
 - HPAI example
- No infectious disease going unaddressed
- Animals have access to fresh feed, water, adequate shelter
- Property managed appropriately



Purpose of Inspection

- Observe all livestock housing areas
 - Barn, sheds, pasture/paddock, fencing
 - Footing, sharp edges
 - Cattle- beef, dairy, oxen
 - Equines - horses, donkeys
 - Sheep and goats
 - Swine (including pet pigs)
 - Poultry - chickens, ducks, geese, turkeys, etc.
 - Camelids – llamas, alpacas
 - Rabbits kept for meat
- Do NOT inspect household pet housing areas
 - Do NOT inspect cats, dogs, guinea pigs, pet rabbits, bees



Biosecurity

Higher risk factors for spreading disease:

- Visiting many farms per day
- Frequent animal contact, especially sick animals
- Using same boots, clothing between multiple sites without cleaning and disinfecting
 - Fomites!
- Frequent foreign travel with animal contact
- Human health: don't eat poop



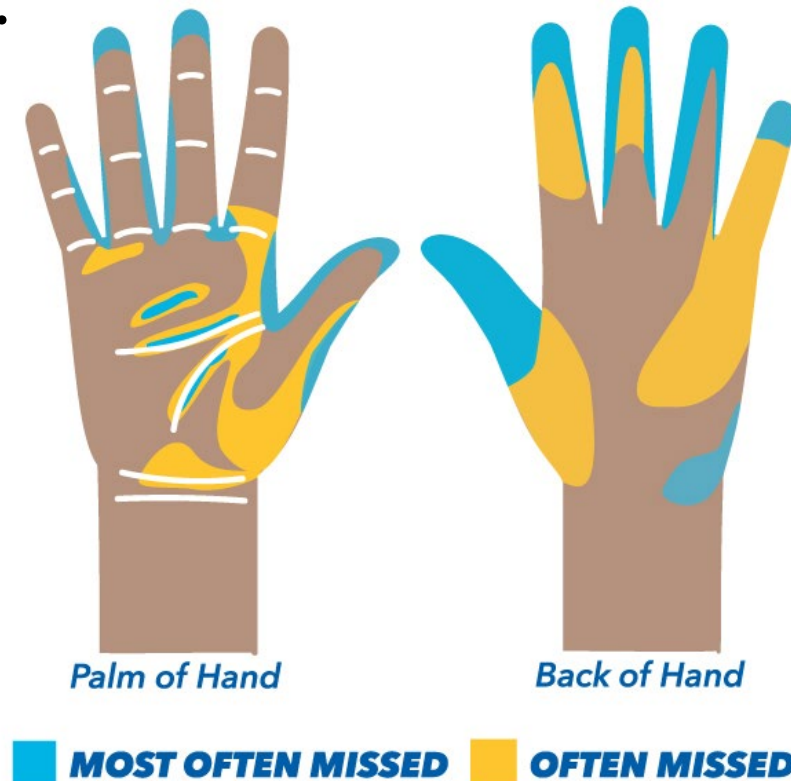
Biosecurity: reduce risk of spreading disease

- Avoid entering animal housing areas
 - Stalls, pens, pastures
- Avoid touching/handling animals, especially sick animals
- Don't be a fomite!
 - Use clean clothing and boots for each site
- Dedicated clothing/boots for personal animals
- ACO- clean and disinfect cages, dishes, equipment between groups of animals



Biosecurity

- Park away from animal area
 - Avoid contaminating tires
- Gather supplies- form, pen, business card, etc.
- Put on rubber boots or booties
- Set up for exiting the farm
 - Trash bag
 - Sanitizing wipes, hand sanitizer, boot brush and disinfectant in bucket
 - Change of shoes if needed



STEP 1



USE SOAP

STEP 2



PALM TO PALM

STEP 3



BACK TO HANDS

STEP 4



BETWEEN FINGERS

STEP 5



BASE OF THUMBS

STEP 6



FINGERNAILS

STEP 7



WRISTS

STEP 8



RINSE HANDS

STEP 9



DRY HANDS

Biosecurity- Cleaning then Disinfection

1. Dry clean: remove animals, manure, bedding (sweep)
2. Wet Clean: warm water, soap, scrub; allow to dry
3. Disinfect: Read the label! appropriate surface, concentration, contact time, safety
4. Rinse and allow to dry

Bleach:

- Readily available
- Does NOT work if area is dirty!
- Poor choice for wood
- Safety concerns

Accelerated Hydrogen Peroxide

- One step disinfect cleaner
- Good choice for wood
- Fewer safety concerns than bleach

Vehicle Tips

- Keep vehicle tidy
- Designate clean and dirty areas
- Store supplies in closed, easily disinfected containers
- Spare clothing, shoes, hats; seat covers



Basic Husbandry

- Husbandry = animal management and care
- Poor husbandry → stress → weakened immune system → disease
- Record concerns on Barn Book AND immediately report to MDAR
 - Separate supplemental report
 - Additional follow up



Basic Husbandry

- Water
 - Continuous access (except particular circumstances)
 - Must be clean
 - Must be liquid (or offered frequently in winter)



Basic Husbandry

Appropriate feed

- Cattle, goats, sheep, horses, camelids – forage – primarily hay; may also get grain
 - Hay quality
 - Pasture – may be adequate for some of the summer; hay also needed
 - Cattle – silage, TMR
- Swine – omnivores; do not get much nutrition from hay alone
 - Grain
 - Human food waste, garbage (more later)

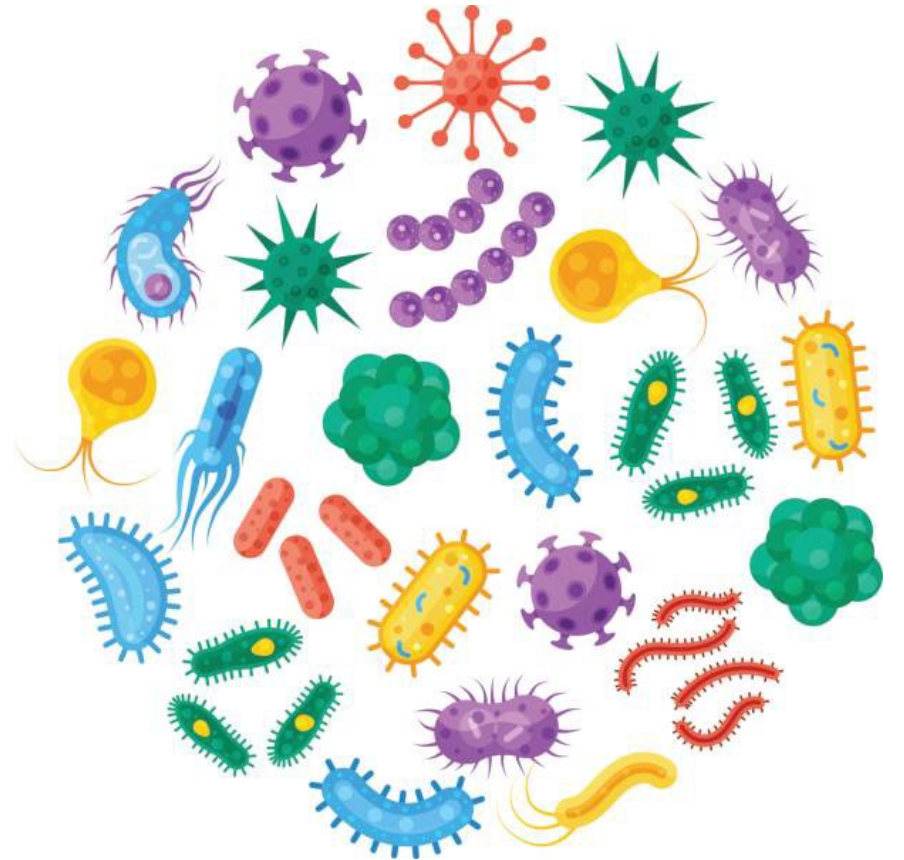


Basic Husbandry

- Access to feed
 - Reduce competition – increase number and space between feeders

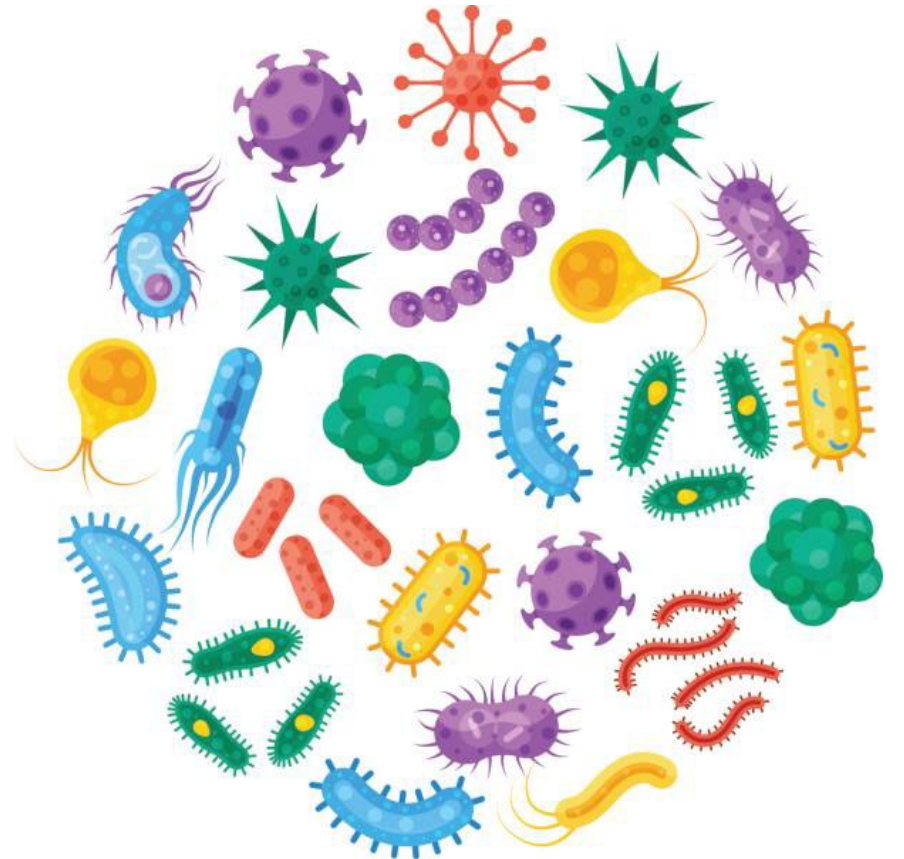


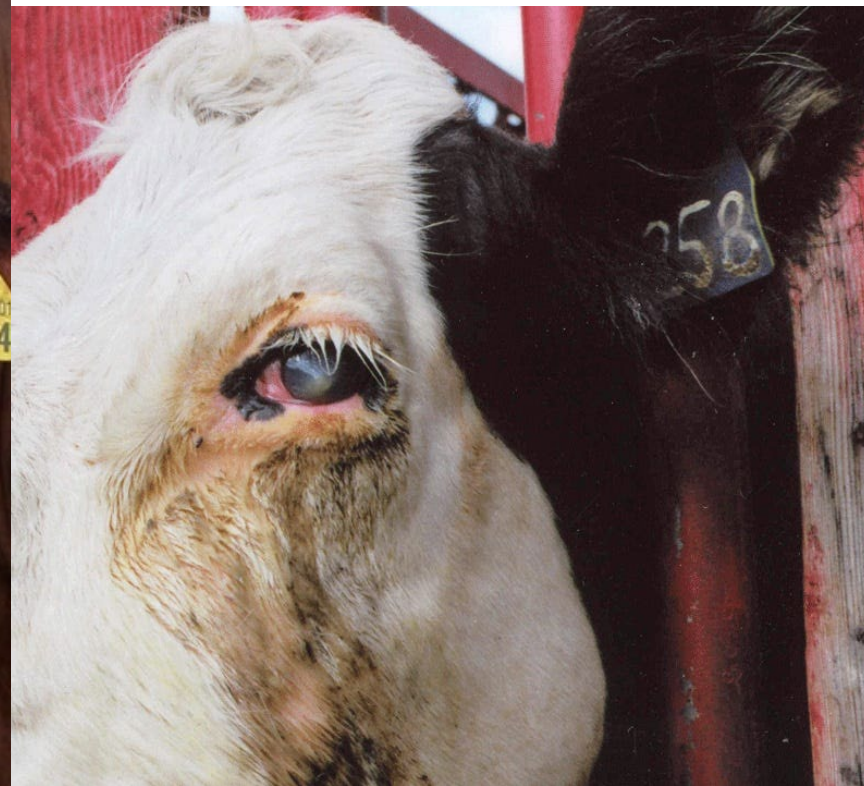
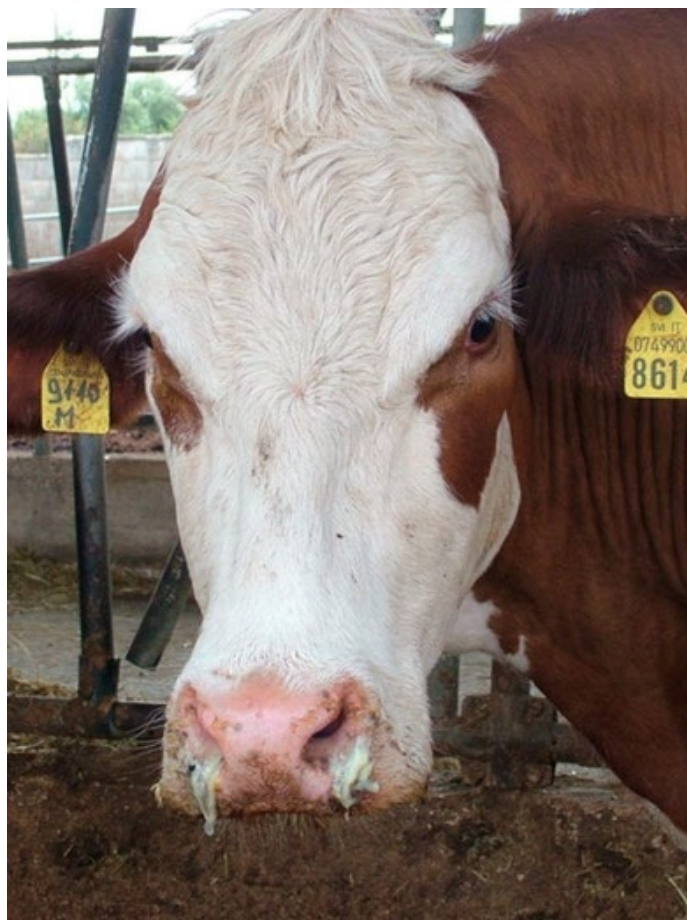
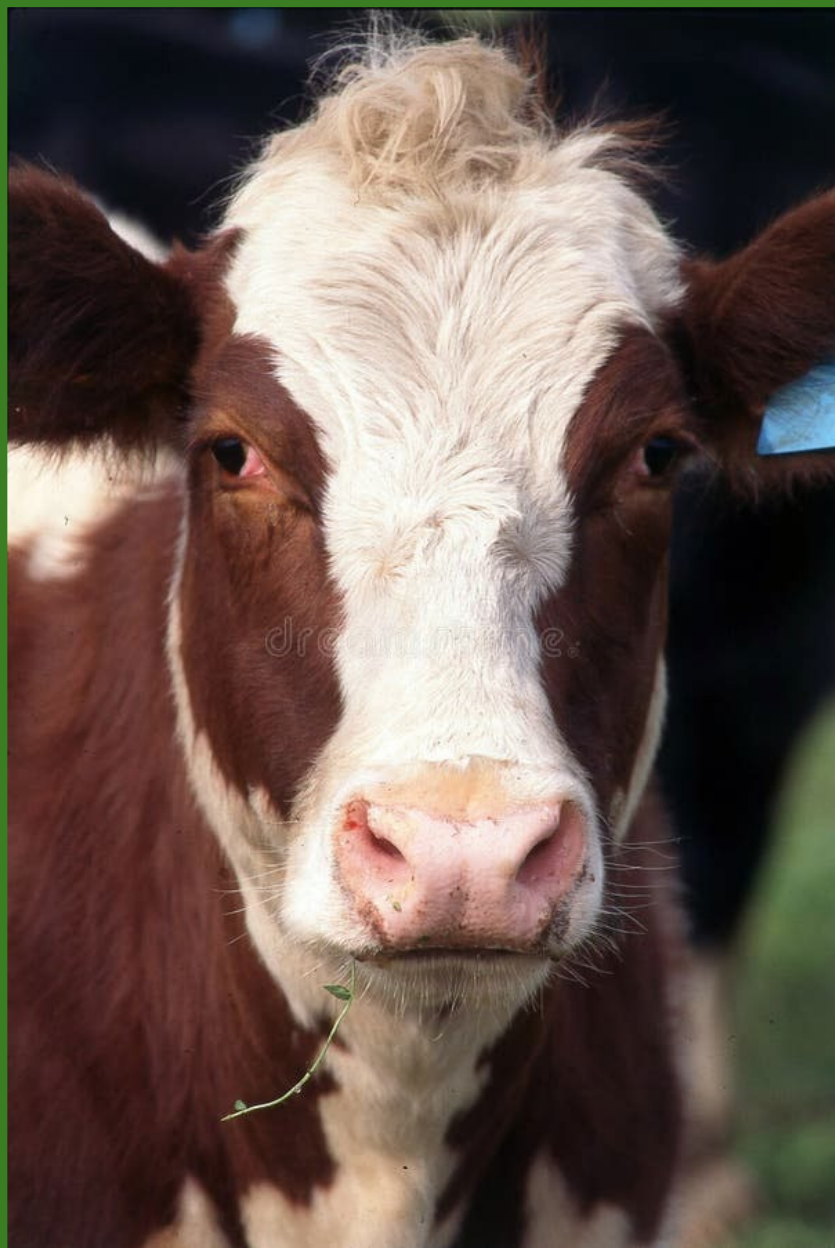
Signs of Disease

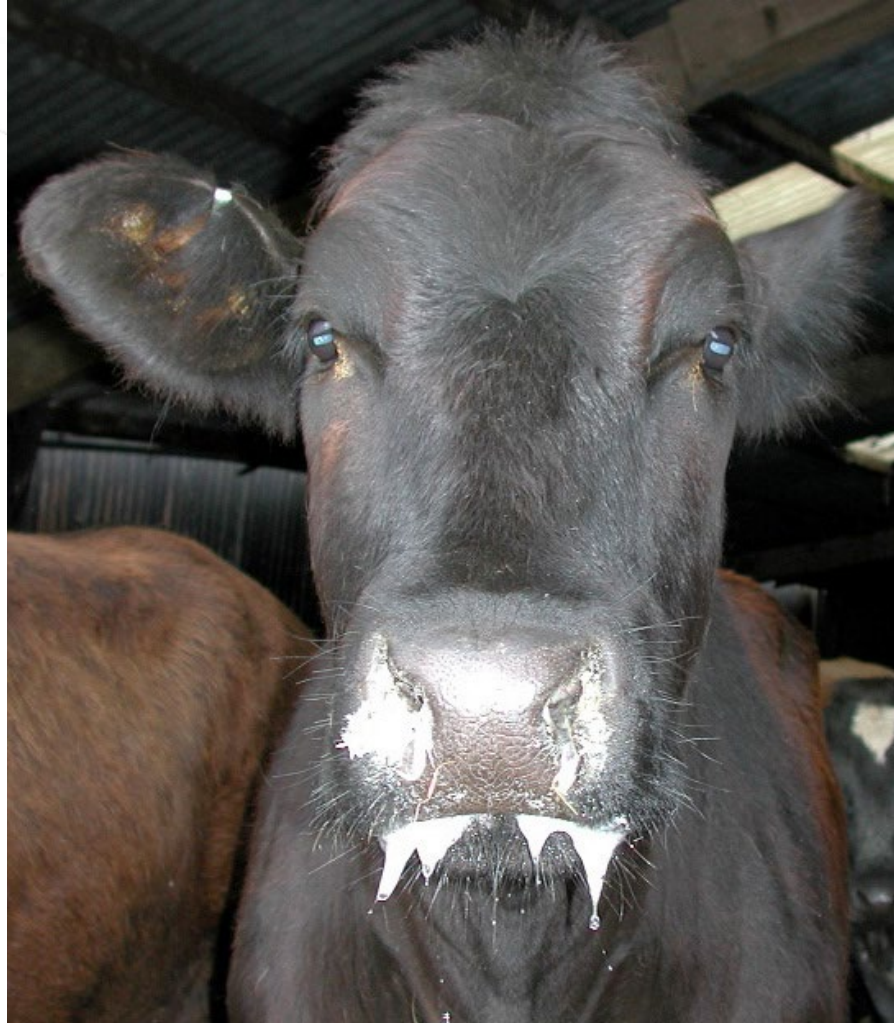


Signs of Disease

- Dull attitude, behavior changes
- Dirty or thin compared to herdmates
- Discharge from eyes, nose
- Coughing, difficulty breathing
- Sores or scabs around the mouth, hooves, udder
- Large or multiple areas of missing hair
- Open wounds
- Discoloration of skin (pigs) or comb/wattle
- Thin
- Unable to stand or bear weight on a limb
- Uncoordinated gait
- Diarrhea (vomiting – pigs)













Adequate Body Condition

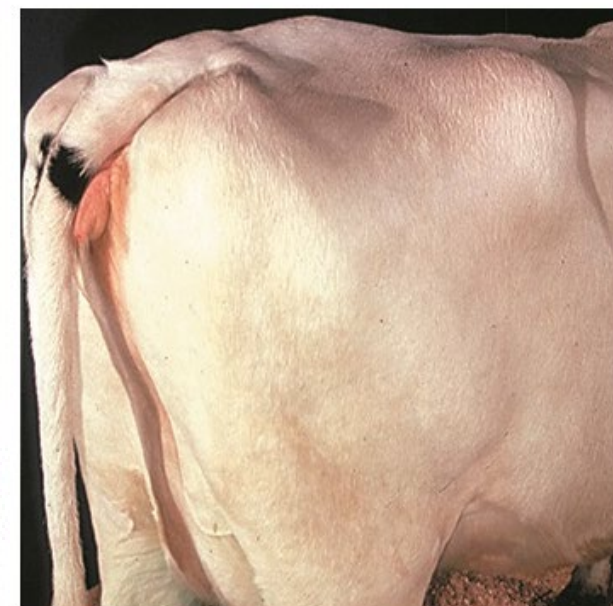
- BCS requires palpation, avoid handling animals



Adequate Body Condition



Adequate Body Condition



Adequate Body Condition



Sick or Thin Animals



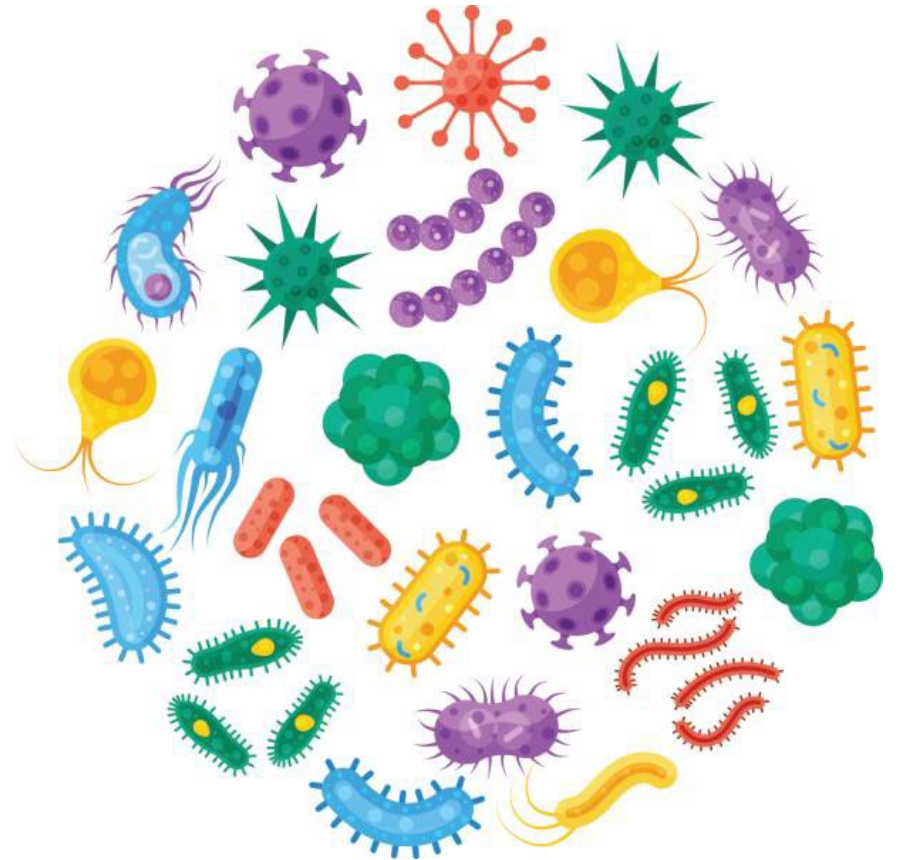
- How many animals affected? Which species?
 - Do not assign Body Condition Score – requires training AND palpation
- Owner discussion:
 - Aware of problem?
 - How long has the animal been here? Where did it come from?
 - Recommend vet exam. Who is the regular vet?
 - If recent vet exam, request permission to call the veterinarian and get info
 - Veterinarians are mandatory reporters of animal cruelty

Sick or Thin Animals



- Record concerns on Barn Book AND immediately report to MDAR
 - May need to end inspections – biosecurity!
 - May need separate supplemental report
 - Additional follow up – re-inspection with MDAR +/- humane agency; insuring owner complies with recommendations from veterinarian/MDAR/humane agency
- Exigency – cannot stand, life or death
 - Animal will die in the time it takes to get a warrant
 - Call police, veterinarian, MDAR

Disease Topics



Equine Herpes Virus

- EHV-1, EHV-4: almost all foals exposed; respiratory signs, life-long infection, shed virus during times of stress
- Sometimes virus causes neurologic signs – EHM
 - Contagious, some horses recover
- Virus more common in cool weather
- Vaccine prevents respiratory disease, NOT neuro signs

- Waco, TX rodeo event November 5-9, 2025
 - No MA tracebacks

- [Equine Disease Communication Center](#)

Poultry - Highly Pathogenic Avian Influenza

- Entered the US first in wild birds in 2021-2022, since then detected in wild birds and domestic poultry across the US
- Higher risk in fall, winter, spring
 - Migration
 - Cool, wet weather – virus survives longer in water, feces, feathers, bodily fluids
 - Fomites!
 - Clothing, shoes, equipment, trailers
 - Follow biosecurity principles discussed
- [Poultry Program | Mass.gov](#) for resources on biosecurity

Prevent Exposure to HPAI

Do not allow your poultry to have contact with wild birds, their feathers, or feces

House poultry in a coop with a covered run



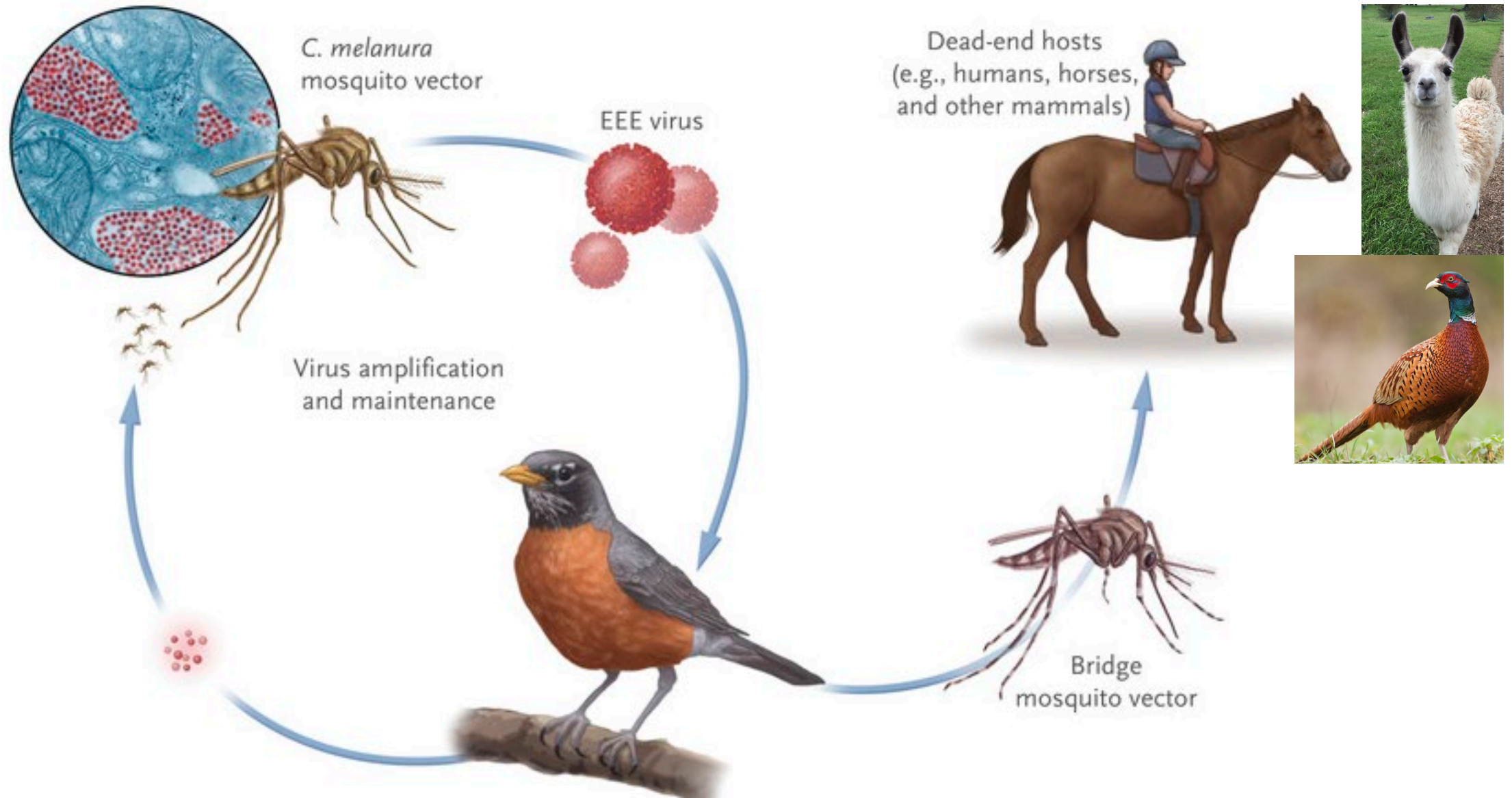


Salmonella Pullorum

- Chickens, turkeys, game birds – live birds or hatching eggs
- Must be tested prior to movement off property
 - Slaughter movement exempt
- MDAR provides free testing
 - Poultry Program Coordinator Megan Megrath:
Megan.Megrath@mass.gov



Eastern Equine Encephalitis, West Nile Virus



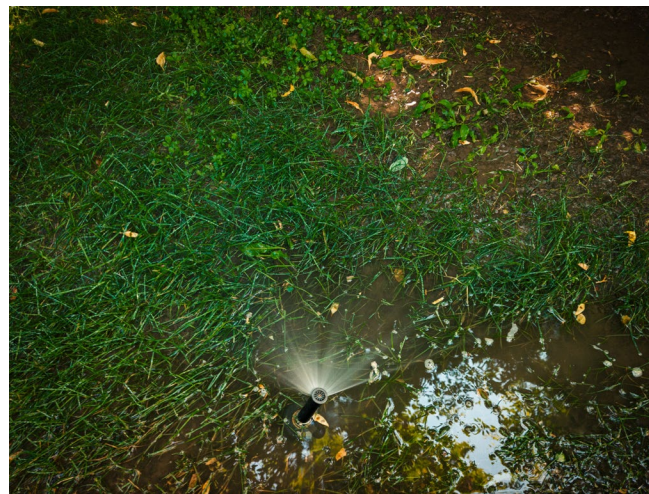
Eastern Equine Encephalitis, West Nile Virus

- Horses, camelids – neurologic signs
- Emus, ostriches, pheasants – GI signs
- No treatment for EEE, highly fatal
- Horse-labeled vaccine available, highly effective!
 - Sometimes used in other species
 - Timing of vaccine to protect whole mosquito season (May-October)
- In mosquito season – if animal dies/euthanized and rabies negative, DPH tests for EEE and WNV
- [Massachusetts arbovirus update | Mass.gov](#)



EEE and WNV: Prevention

- Clean water troughs and bird baths twice weekly
- Eliminate standing water
 - Pools from irrigation, dumping buckets
 - Toys, equipment, tires, trash
- Remove piles of manure, brush, lawn clippings



Swine

- “Transitional” swine = outdoors/outdoor access, potential contact with feral swine
- Feral swine
 - Exist in New England and NY
 - Escapees - farms, markets, shipments
 - Always one truckload away
 - Clever and destructive - huge problem



Garbage Feeding and Disease

- New England - food waste >> corn and soy
 - Recycling; reduces organics in landfill
- “Garbage” = any food waste containing or mixed with meat/meat-containing products
 - Nutritious
 - Meat could contain pathogens - cooking “garbage” regulated by MDAR and USDA to prevent disease
 - NOT bakery waste, produce
- Evidence of “garbage” - note on Barn Book and call MDAR
 - Ask - what do you feed your pigs?



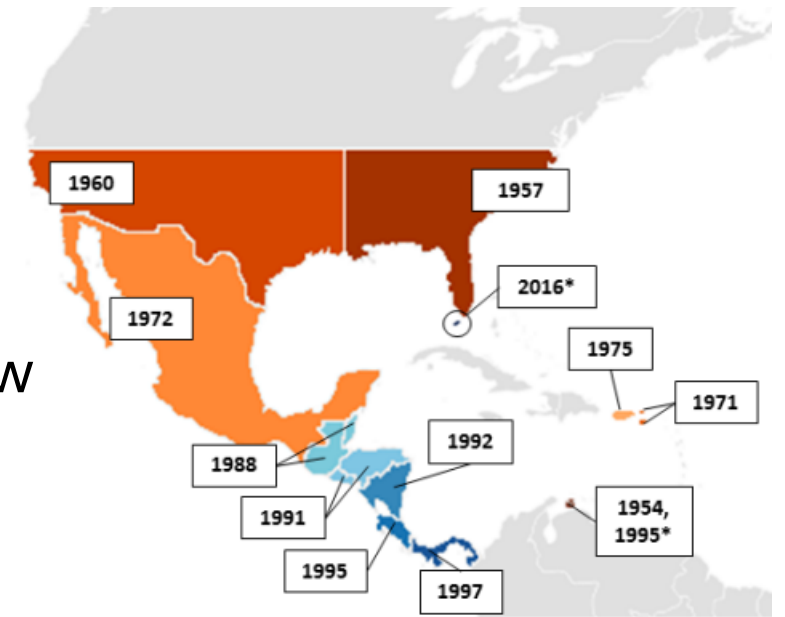
Swine Disease



- African Swine Fever and Classical Swine Fever
 - Pigs only - high fever, respiratory and/or GI signs, blotchy skin
 - Pig to pig contact, fomites – contaminated vehicles, international travelers
 - Contaminated feed- especially “garbage” made with pork products from endemic countries
- ASF detected in Dominican Republic and Haiti initially in 2021
 - PR and US VI – protection zone – increased safeguards between these areas and mainland US to prevent spread
 - ASF/CSF other transboundary/foreign animal diseases devastating to US commercial swine industry
- Pet pigs vs. production pigs
- [Protect Our Pigs | Animal and Plant Health Inspection Service](#)
- CT veterinary diagnostic lab, USDA possible funding for sick pig necropsies

New World Screwworm

- Female NWS flies lay eggs in wounds, maggots burrow into living tissue
 - Very large or deep wounds
 - Painful, fatal without treatment
 - FDA in process of approving current products for NWS use
 - Livestock, pets, humans
- Eradicated from US in 1960s using sterile insect technique
- Eradicated through Panama until 2023
 - Moved northward through Central America and into North America (Mexico)- illegal animal movements – in Mexico now
- 2016 FL keys – key deer
- Screwworm.gov



Preventing Disease in Facilities that House Dogs

Biosecurity Practices for Doggy Daycares, Boarding Facilities, Kennels, and Groomers

Prevent Disease Introduction into the facility by having robust Vaccination and Biosecurity Requirements

Kennel Cough

- [MDAR Canine Kennel Biosecurity](#)

Prevent Disease Exposure



1. Ask about Health and Exclude Sick Animals

- Staff should ask about the dog's health status prior to acceptance.
"How has "Pupper" been feeling lately?"
- Staff should observe the animals for signs of disease (coughing, sneezing, runny nose, vomiting, diarrhea, lethargy). Animals displaying signs of disease should not be allowed to enter the facility. These animals should be examined by a veterinarian prior to entry. Inform clients of this policy.

2. Contain the Disease

- Transmission of disease occurs when an infected animal or its bodily fluids (feces, urine, fluids from coughing/sneezing, saliva, etc.) come into contact with another animal. Material contaminated by bodily fluids such as bedding, toys, a caretaker's hands, clothes, footwear, etc. pose the same risk.
- Animals that show signs of illness should be moved to an area with no access to other animals. Sick animals must be removed from the facility immediately. Have a backup plan in place in case the owner cannot pick up their animal right away. Sick animals should be examined by a veterinarian.
- Have a dedicated area to isolate an animal that becomes sick. Use dedicated equipment (bowls, toys, bedding, cleaning supplies, etc.) in the sick animal area. Clean and disinfect this area and equipment thoroughly after the animal has left the facility and before any equipment is removed from this area.

3. Reduce Comingling and Cross Contamination

- Keep different groupings of animals housed separately (for example, groups based on animal size or temperament). Have dedicated areas for each group and dedicated equipment for each animal housing area.
- Employees should wash hands with soap and warm water after handling dogs and between handling different groups of animals.
- Clean and disinfect animal areas before moving different animals into that space.

Vaccination



- Vaccination is highly effective in preventing disease in dogs when the risk for disease exposure is increased due to comingling. Facility owners and managers should discuss recommended vaccination requirements (including frequency) with their veterinarian.
- Ensure that any dog entering the facility has a current rabies vaccine and appropriate dog license.
- Diseases of concern for dogs include: Distemper, Canine Adenovirus types 1 and 2, Parvovirus, Parainfluenza, Bordetella, Influenza H3N8, Influenza H3N2, and Leptospirosis.

Questions?

