



Paul J. Diodati
Director

Commonwealth of Massachusetts

Division of Marine Fisheries

1213 Purchase Street, 3rd Floor

New Bedford, MA 02740

(508) 990-2860

Fax (508) 990-0449



February 29, 2008

Mr. William Adler, Executive Director
Mass. Lobstermen's Association, Inc.
8 Otis Place
Scituate, MA 02066-1323

Dear Bill,

Thank you for your continued publication of DMF's spring trawl survey station locations to promote cooperation with Massachusetts' lobstermen and other fixed gear fishermen. DMF's trawl survey provides information for many uses including environmental reviews and groundfish assessments. It is critical to the integrity of the survey that we maintain access to sampling sites.

We ask that all fixed gear fishermen review the attached table of station location details and the accompanying figures which plot the locations of all selected sample sites from north of Cape Ann to east of Cape Cod. We request that all fixed gear be kept clear of station locations (1.5 n. mi. diameter circle as shown in figure - center point reported in table) for the indicated periods. We will make every attempt to complete stations during the assigned period to minimize inconvenience to fixed gear fishermen. Fishermen can contact the R/V Gloria Michelle on VHF channels 13 or 16 to determine the updated daily schedule. In the event of a delay due to weather, we will resume our schedule as soon as working conditions permit. Station location information can also be accessed at the DMF website (<http://www.mass.gov/dfwele/dmf/programsandprojects/resource.htm>).

The DMF Director is prepared to attach restrictions to permit renewals (under 322 CMR 7.01 (7)) mandating that fixed gear not be set on designated trawl survey sites for the announced dates. It remains our hope that this action will be unnecessary.

Personnel aboard the NOAA R/V Gloria Michelle (65' western rigged steel stern trawler with a blue hull and white deckhouse) will carefully check each site for marked gear by cruising along a selected tow path at least once before the net is set. Undertaken at 2.5 knots, twenty-minute tows cover approximately 0.8 n mi., generally along a depth contour. We encourage communicating helpful information to the R/V officers (via channels 13 or 16).

Sincerely,

A handwritten signature in blue ink, appearing to read "Jeremy King".

Jeremy King

Senior Marine Fisheries Biologist

Cc.

Paul Diodati

Massachusetts Division of Marine Fisheries May 2008 Spring Trawl Survey
Station Locations Massachusetts Bay to New Hampshire

Area Description	General Description	Depth	Range of	Center of Tow Area			Sta. ID#	
			Dates	Latitude	Longitude	Loran		
Cape Ann and North	Mouth of Plum Island Sound	0 to 30	May 9 - 12	42 ° 42.47	70 ° 45.54	13832.5 \	44381.9	5-1
	Salisbury Beach	0 to 30	May 9 - 12	42 ° 49.91	70 ° 48.54	13811.9 \	44426.2	5-2
	South of Merrimack River Mouth	31 to 60	May 9 - 12	42 ° 47.42	70 ° 47.75	13820.0 \	44411.7	5-3
	Ipswich Bay, Annisquam	31 to 60	May 9 - 12	42 ° 40.60	70 ° 40.65	13810.5 \	44362.5	5-4
	East of Plum Island	61 to 90	May 9 - 12	42 ° 46.83	70 ° 46.36	13814.0 \	44406.0	5-5
	East of Salisbury Beach	61 to 90	May 9 - 12	42 ° 50.06	70 ° 46.72	13796.0 \	44426.2	5-6
	Northwest of Folly Cove	61 to 90	May 9 - 12	42 ° 41.97	70 ° 39.96	13799.0 \	44368.3	5-7
	North-Northwest of Folly Cove	91 to 120	May 9 - 12	42 ° 42.65	70 ° 40.08	13795.8 \	44372.1	5-8
	Straitsmouth Island	91 to 120	May 8 - 11	42 ° 39.72	70 ° 33.92	13772.3 \	44345.0	5-9
	Halibut Point	91 to 120	May 9 - 12	42 ° 42.03	70 ° 38.08	13786.0 \	44365.0	5-10
	Halibut Point	121 to 180	May 9 - 12	42 ° 42.39	70 ° 37.69	13782.0 \	44366.3	5-11
	North-Northwest of Halibut Point	121 to 180	May 9 - 12	42 ° 44.30	70 ° 38.96	13779.6 \	44378.7	5-12
	Southeast of Salt Island Ledge	121 to 180	May 8 - 11	42 ° 35.98	70 ° 35.01	13799.0 \	44327.4	5-13
	Northeast of Dry Salvages	181 +	May 8 - 11	42 ° 42.58	70 ° 32.41	13746.9 \	44357.2	5-14
	East-Southeast of Thatcher's Island	181 +	May 8 - 11	42 ° 37.55	70 ° 31.67	13769.5 \	44329.5	5-15
Massachusetts Bay	Nantasket Beach	0 to 30	May 6 - 10	42 ° 17.44	70 ° 52.14	14002.6 \	44255.1	5-16
	Nahant Bay	0 to 30	May 7 - 10	42 ° 27.20	70 ° 55.35	13975.2 \	44317.0	5-17
	North of Cohasset	31 to 60	May 6 - 10	42 ° 17.18	70 ° 48.58	13980.7 \	44247.0	5-18
	Nahant Bay	31 to 60	May 7 - 10	42 ° 27.06	70 ° 54.18	13968.0 \	44314.0	5-19
	Strawberry Ledge	31 to 60	May 6 - 10	42 ° 17.77	70 ° 51.28	13995.0 \	44255.5	5-20
	Nahant Bay	61 to 90	May 7 - 10	42 ° 26.67	70 ° 52.86	13963.9 \	44306.5	5-21
	Harding Ledge	61 to 90	May 6 - 10	42 ° 18.49	70 ° 48.31	13973.0 \	44254.3	5-22
	South of The Dump	91 to 120	May 6 - 13	42 ° 18.73	70 ° 43.39	13940.0 \	44246.6	5-23
	South of Pig Rock Bell	91 to 120	May 7 - 10	42 ° 26.37	70 ° 50.48	13947.4 \	44303.0	5-24
	South of Kettle Island	91 to 120	May 8 - 11	42 ° 32.88	70 ° 43.48	13869.4 \	44325.0	5-25
	Southwest of Saturday Night Ledge	121 to 180	May 7 - 13	42 ° 31.15	70 ° 43.06	13875.5 \	44315.4	5-26
	South of Dumping Ground	121 to 180	May 6 - 9	42 ° 19.16	70 ° 42.08	13930.0 \	44246.7	5-27
	East-Southeast Tinker's Island	121 to 180	May 7 - 10	42 ° 28.30	70 ° 46.15	13910.0 \	44305.5	5-28
	North of The Dump	181 +	May 8 - 13	42 ° 27.98	70 ° 38.84	13864.8 \	44290.0	5-29
	The Dump	181 +	May 10 - 13	42 ° 25.05	70 ° 39.25	13882.2 \	44274.8	5-30

* Loran coordinates taken from NOAA paper charts.
Please refer to Lat/Long. For best accuracy.

Massachusetts Division of Marine Fisheries May 2008 Spring Trawl Survey
Station Locations Cape Cod Bay

Area Description	General Description	Depth	Range of Dates	Center of Tow Area		Loran	Sta. ID#
				Latitude	Longitude		
Western Cape Cod Bay	Duxbury Beach	0 to 30	May 6 - 8	42 ° 02.29	70 ° 37.52	13981.9 \ 44140.0	4-1
	Peaked Cliff Sagamore Beach	0 to 30	May 5 - 8	41 ° 48.80	70 ° 31.29	14004.5 \ 44047.5	4-2
	Browns Bank Plymouth Bay	0 to 30	May 5 - 8	41 ° 58.35	70 ° 36.70	13994.8 \ 44114.9	4-3
	Scorton Harbor	31 to 60	May 5 - 8	41 ° 45.85	70 ° 22.89	13967.2 \ 44016.7	4-4
	North of Sandy Neck	31 to 60	May 5 - 8	41 ° 46.26	70 ° 19.83	13947.6 \ 44014.6	4-5
	Northeast of Ellisville	31 to 60	May 5 - 8	41 ° 51.24	70 ° 30.12	13987.0 \ 44060.6	4-6
	East of Cape Cod Canal	61 to 90	May 5 - 8	41 ° 47.67	70 ° 25.52	13975.8 \ 44031.7	4-7
	Northeast Brant Rock	61 to 90	May 6 - 8	42 ° 06.86	70 ° 33.48	13935.2 \ 44160.0	4-8
	Northeast of Cape Cod Canal	61 to 90	May 5 - 14	41 ° 50.64	70 ° 19.77	13927.4 \ 44040.9	4-9
	East of Manomet Point	91 to 120	May 5 - 8	41 ° 55.02	70 ° 26.00	13944.9 \ 44077.4	4-10
	East-Northeast of Manomet Point	91 to 120	May 5 - 8	41 ° 55.93	70 ° 28.89	13958.2 \ 44087.5	4-11
	Northeast White Horse Beach	91 to 120	May 5 - 8	41 ° 59.60	70 ° 29.15	13942.1 \ 44109.9	4-12
	East-Northeast of Gurnet Point	121 to 180	May 10 - 13	42 ° 01.81	70 ° 27.85	13925.0 \ 44120.7	4-13
	Northeast Manomet Point	121 to 180	May 10 - 13	41 ° 59.75	70 ° 24.12	13912.1 \ 44102.4	4-14
	East of Green Harbor	121 to 180	May 10 - 13	42 ° 03.78	70 ° 28.64	13920.1 \ 44133.6	4-15
Eastern Cape Cod Bay	South of Billingsgate	0 to 30	May 5 - 8	41 ° 49.46	70 ° 05.24	13846.9 \ 44012.5	4-16
	Billingsgate	0 to 30	May 5 - 8	41 ° 51.50	70 ° 08.89	13858.8 \ 44030.0	4-17
	Tip of Billingsgate	31 to 60	May 5 - 8	41 ° 49.99	70 ° 11.84	13883.5 \ 44025.1	4-18
	South of Billingsgate	31 to 60	May 5 - 8	41 ° 49.50	70 ° 08.08	13863.8 \ 44016.3	4-19
	Southeast of Wood End	61 to 90	May 12 - 14	42 ° 00.42	70 ° 09.95	13823.2 \ 44084.0	4-20
	Southwest of Pamet Harbor	61 to 90	May 12 - 14	41 ° 58.16	70 ° 08.45	13825.0 \ 44068.7	4-21
	Southeast of Fishing Ledge	91 to 120	May 12 - 14	41 ° 53.98	70 ° 14.45	13880.5 \ 44052.7	4-22
	West of Great Island Wellfleet	91 to 120	May 12 - 14	41 ° 54.47	70 ° 12.05	13864.2 \ 44052.3	4-23
	Northeast of Fishing Ledge	121 to 180	May 12 - 14	41 ° 57.67	70 ° 17.52	13881.2 \ 44080.0	4-24
	North of Fishing Ledge	121 to 180	May 12 - 14	41 ° 59.32	70 ° 18.55	13880.0 \ 44091.5	4-25
	West of Race Point	181 +	May 10 - 15	42 ° 03.76	70 ° 22.71	13884.0 \ 44123.6	4-26
	Race Point	181 +	May 12 - 15	42 ° 03.58	70 ° 18.30	13858.8 \ 44116.0	4-27
	West-Northwest of Race Point	181 +	May 12 - 15	42 ° 05.23	70 ° 18.67	13852.9 \ 44125.8	4-28

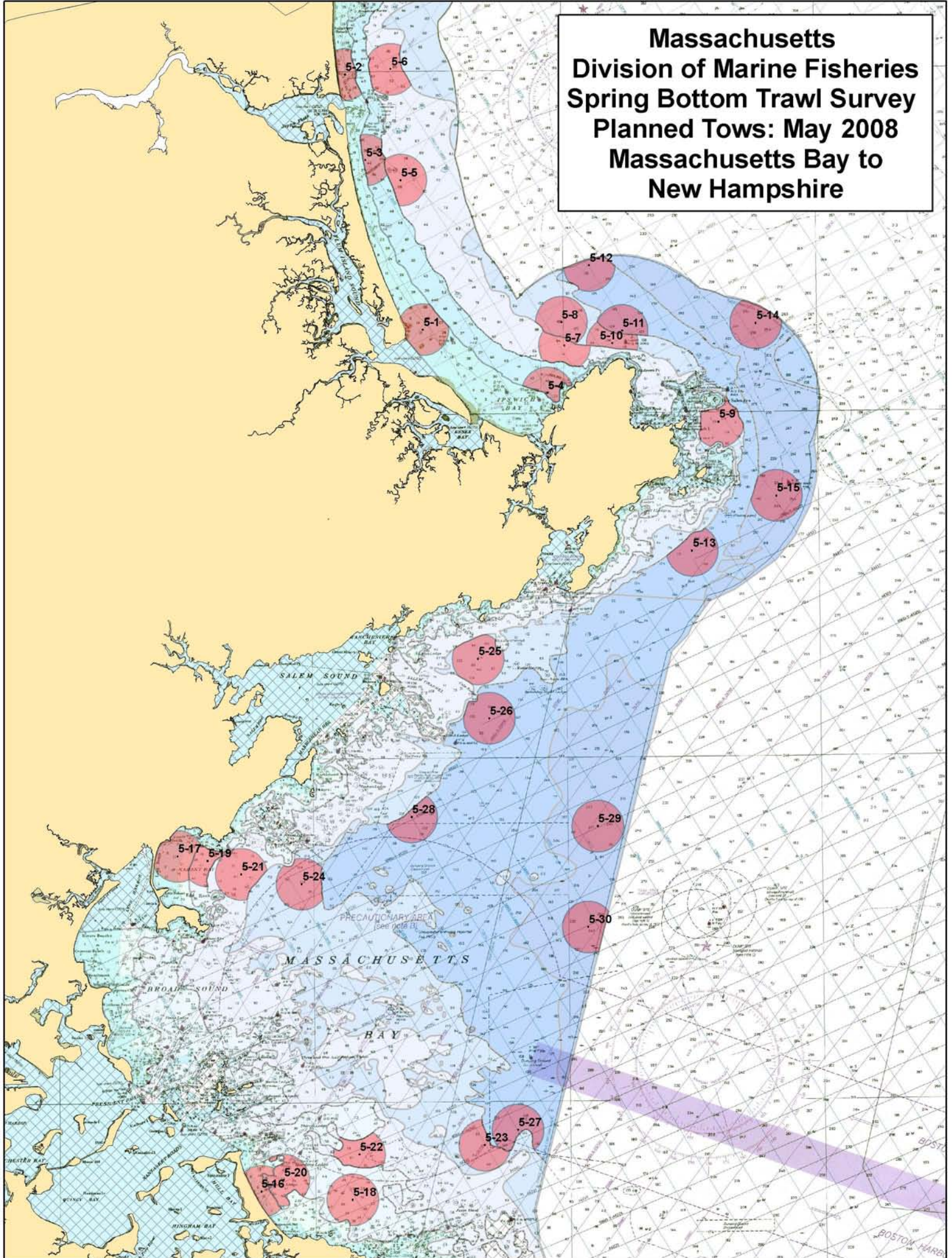
* Loran coordinates taken from NOAA paper charts.
Please refer to Lat/Long. For best accuracy.

Massachusetts Division of Marine Fisheries May 2008 Spring Trawl Survey
Station Locations East of Cape Cod

Area Description	General Description	Depth	Range of Dates	Center of Tow Area			Loran	Sta. ID#
				Latitude	Longitude			
East of Cape Cod	Cahoon Hollow Beach	0 to 30	May 13 - 16	41 ° 56.91	69 ° 58.60	13773.2	\ 44046.5	3-1
	South End Peaked Hill Bar	0 to 30	May 12 - 15	42 ° 04.36	70 ° 06.66	13784.3	\ 44103.5	3-2
	East of Coast Guard Beach	31 to 60	May 13 - 16	41 ° 49.42	69 ° 55.40	13789.6	\ 43997.7	3-3
	Northeast Ballston Beach	31 to 60	May 12 - 15	42 ° 00.87	70 ° 00.83	13767.3	\ 44072.5	3-4
	Northeast Nauset Light	31 to 60	May 13 - 16	41 ° 52.86	69 ° 56.58	13780.8	\ 44019.4	3-5
	East of Coast Guard Beach	61 to 90	May 13 - 16	41 ° 50.38	69 ° 55.12	13784.2	\ 44002.8	3-6
	East of Nauset Beach Chatham	61 to 90	May 13 - 16	41 ° 42.32	69 ° 52.71	13806.9	\ 43951.3	3-7
	East of Pochet Island	91 to 120	May 13 - 16	41 ° 45.82	69 ° 52.18	13787.4	\ 43971.5	3-8
	East of Coast Guard Beach	91 to 120	May 13 - 16	41 ° 49.45	69 ° 53.56	13779.4	\ 43995.2	3-9
	North of Peaked Hill Bar	91 to 120	May 12 - 15	42 ° 06.06	70 ° 08.24	13786.0	\ 44114.3	3-10
	North of Race Point	121 to 180	May 12 - 15	42 ° 06.39	70 ° 14.12	13819.3	\ 44125.5	3-11
	East of Coast Guard Beach	121 to 180	May 13 - 16	41 ° 49.48	69 ° 52.83	13774.9	\ 43994.0	3-12
	Northeast of Highland Light	121 to 180	May 12 - 15	42 ° 04.24	70 ° 00.98	13751.2	\ 44092.5	3-13

* Loran coordinates taken from NOAA paper charts.
Please refer to Lat/Long. For best accuracy.

**Massachusetts
Division of Marine Fisheries
Spring Bottom Trawl Survey
Planned Tows: May 2008
Massachusetts Bay to
New Hampshire**



**Massachusetts
Division of Marine Fisheries
Spring Bottom Trawl Survey
Planned Tows: May 2008
Cape Cod Bay and
East of Cape Cod**

