



Paul J. Diodati
Director

Commonwealth of Massachusetts

Division of Marine Fisheries

1213 Purchase Street, 3rd Floor

New Bedford, MA 02740

(508) 990-2860

Fax (508) 990-0449



March 19, 2009

Mr. William Adler, Executive Director
Mass. Lobstermen's Association, Inc.
8 Otis Place
Scituate, MA 02066-1323

Dear Bill,

Thank you for your continued publication of DMF's spring trawl survey station locations to promote cooperation with Massachusetts' lobstermen and other fixed gear fishermen. DMF's trawl survey provides information for many uses including environmental reviews and groundfish assessments. It is critical to the integrity of the survey that we maintain access to sampling sites.

We ask that all fixed gear fishermen review the attached table of station location details and the accompanying figures which plot the locations of all selected sample sites from north of Cape Ann to east of Cape Cod. We request that all fixed gear be kept clear of station locations (1.5 n. mi. diameter circle as shown in figure - center point reported in table) for the indicated periods. We will make every attempt to complete stations during the assigned period to minimize inconvenience to fixed gear fishermen. Fishermen can contact the R/V Gloria Michelle on VHF channels 13 or 16 to determine the updated daily schedule. In the event of a delay due to weather, we will resume our schedule as soon as working conditions permit. Station location information can also be accessed at the DMF website (<http://www.mass.gov/dfwele/dmf/programsandprojects/resource.htm>).

The DMF Director is prepared to attach restrictions to permit renewals (under 322 CMR 7.01 (7)) mandating that fixed gear not be set on designated trawl survey sites for the announced dates. It remains our hope that this action will be unnecessary.

Personnel aboard the NOAA R/V Gloria Michelle (65' western rigged steel stern trawler with a blue hull and white deckhouse) will carefully check each site for marked gear by cruising along a selected tow path at least once before the net is set. Undertaken at 2.5 knots, twenty-minute tows cover approximately 0.8 n mi., generally along a depth contour. We encourage communicating helpful information to the R/V officers (via channels 13 or 16).

Sincerely,

A handwritten signature in dark ink, appearing to read "Jeremy King". The signature is fluid and cursive, with the first name "Jeremy" being more prominent than the last name "King".

Jeremy King

Senior Marine Fisheries Biologist

Cc.

Paul Diodati

Massachusetts Division of Marine Fisheries May 2009 Spring Trawl Survey
Station Locations Massachusetts Bay to New Hampshire

* Loran coordinates taken from NOAA paper charts.
Please refer to Lat/Long. For best accuracy.

Area Description	General Description	Depth	Range of Dates	Latitude	Longitude	Loran		Sta. ID#
Cape Ann and North	Mouth of Plum Island Sound	0 to 30	May 8 - 11	70 ° 44.62	42 ° 42.05	13828.5	\ 44377.6	5 - 1
	Salisbury Beach	0 to 30	May 8 - 11	70 ° 48.24	42 ° 49.88	13809.9	\ 44425.3	5 - 2
	North End of Plum Island	31 to 60	May 8 - 11	70 ° 47.57	42 ° 46.81	13822.1	\ 44408.3	5 - 3
	South End of Plum Island	31 to 60	May 8 - 11	70 ° 44.86	42 ° 43.50	13822.3	\ 44385.7	5 - 4
	ENE of Castle Neck	61 to 90	May 8 - 11	70 ° 42.17	42 ° 42.59	13809.8	\ 44375.6	5 - 5
	NE of Merrimack River	61 to 90	May 8 - 11	70 ° 46.70	42 ° 50.01	13799.0	\ 44423.1	5 - 6
	SE of Merrimack River	61 to 90	May 8 - 11	70 ° 45.58	42 ° 47.60	13804.7	\ 44408.4	5 - 7
	East of Merrimack River	91 to 120	May 8 - 11	70 ° 44.64	42 ° 49.48	13788.4	\ 44416.4	5 - 8
	NE of Flat Point, Rockport	91 to 120	May 8 - 11	70 ° 34.24	42 ° 39.35	13776.1	\ 44343.7	5 - 9
	NW of Folly Cove	91 to 120	May 8 - 11	70 ° 39.97	42 ° 43.55	13790.1	\ 44376.6	5 - 10
	NE of Flat Ground	121 to 180	May 8 - 10	70 ° 33.87	42 ° 41.29	13763.2	\ 44353.2	5 - 11
	NE of Halibut Point	121 to 180	May 8 - 10	70 ° 35.51	42 ° 42.12	13769.2	\ 44360.6	5 - 12
	North of Halibut Point	121 to 180	May 8 - 10	70 ° 37.94	42 ° 42.57	13782.5	\ 44367.5	5 - 13
	NE of Halibut Point	181 +	May 8 - 10	70 ° 36.19	42 ° 43.67	13765.4	\ 44370.0	5 - 14
	SE of Thatcher Island	181 +	May 7 - 10	70 ° 31.54	42 ° 37.02	13771.2	\ 44325.7	5 - 15
Massachusetts Bay	Nantasket Beach	0 to 30	May 6 - 8	70 ° 51.98	42 ° 17.42	14001.5	\ 44254.5	5 - 16
	Revere Beach	0 to 30	May 7 - 9	70 ° 57.74	42 ° 24.64	14003.5	\ 44306.9	5 - 17
	Nahant Bay	31 to 60	May 7 - 9	70 ° 54.54	42 ° 26.60	13972.9	\ 44311.9	5 - 18
	NW of Cohasset	31 to 60	May 6 - 8	70 ° 48.51	42 ° 17.08	13980.9	\ 44246.3	5 - 19
	SE of Harding Ledge	31 to 60	May 6 - 8	70 ° 50.46	42 ° 17.91	13989.3	\ 44254.8	5 - 20
	East of Harding Ledge	61 to 90	May 6 - 8	70 ° 48.25	42 ° 18.46	13972.6	\ 44253.9	5 - 21
	SE of Dread Ledge	61 to 90	May 7 - 9	70 ° 53.00	42 ° 26.66	13962.5	\ 44309.2	5 - 22
	NE Minots Ledge	91 to 120	May 6 - 8	70 ° 43.49	42 ° 19.00	13939.7	\ 44248.3	5 - 23
	NE of The Graves	91 to 120	May 7 - 9	70 ° 49.24	42 ° 23.14	13955.9	\ 44282.4	5 - 24
	SW Breakers	91 to 120	May 7 - 9	70 ° 50.28	42 ° 26.69	13944.8	\ 44304.4	5 - 25
	Outer Breakers	121 to 180	May 7 - 9	70 ° 48.70	42 ° 26.96	13933.1	\ 44302.8	5 - 26
	SE of Eastern Point	121 to 180	May 7 - 10	70 ° 36.64	42 ° 34.26	13818.3	\ 44320.4	5 - 27
	The Dump	121 to 180	May 7 - 9	70 ° 41.82	42 ° 22.12	13913.5	\ 44263.0	5 - 28
	Outer Massachusetts Bay	181 +	May 7 - 9	70 ° 39.34	42 ° 24.99	13883.4	\ 44274.7	5 - 29
	SE of Saturday Night Ledge	181 +	May 7 - 12	70 ° 38.77	42 ° 29.59	13856.2	\ 44299.0	5 - 30

Massachusetts Division of Marine Fisheries May 2009 Spring Trawl Survey
Station Locations Cape Cod Bay

* Loran coordinates taken from NOAA paper charts.
Please refer to Lat/Long. For best accuracy.

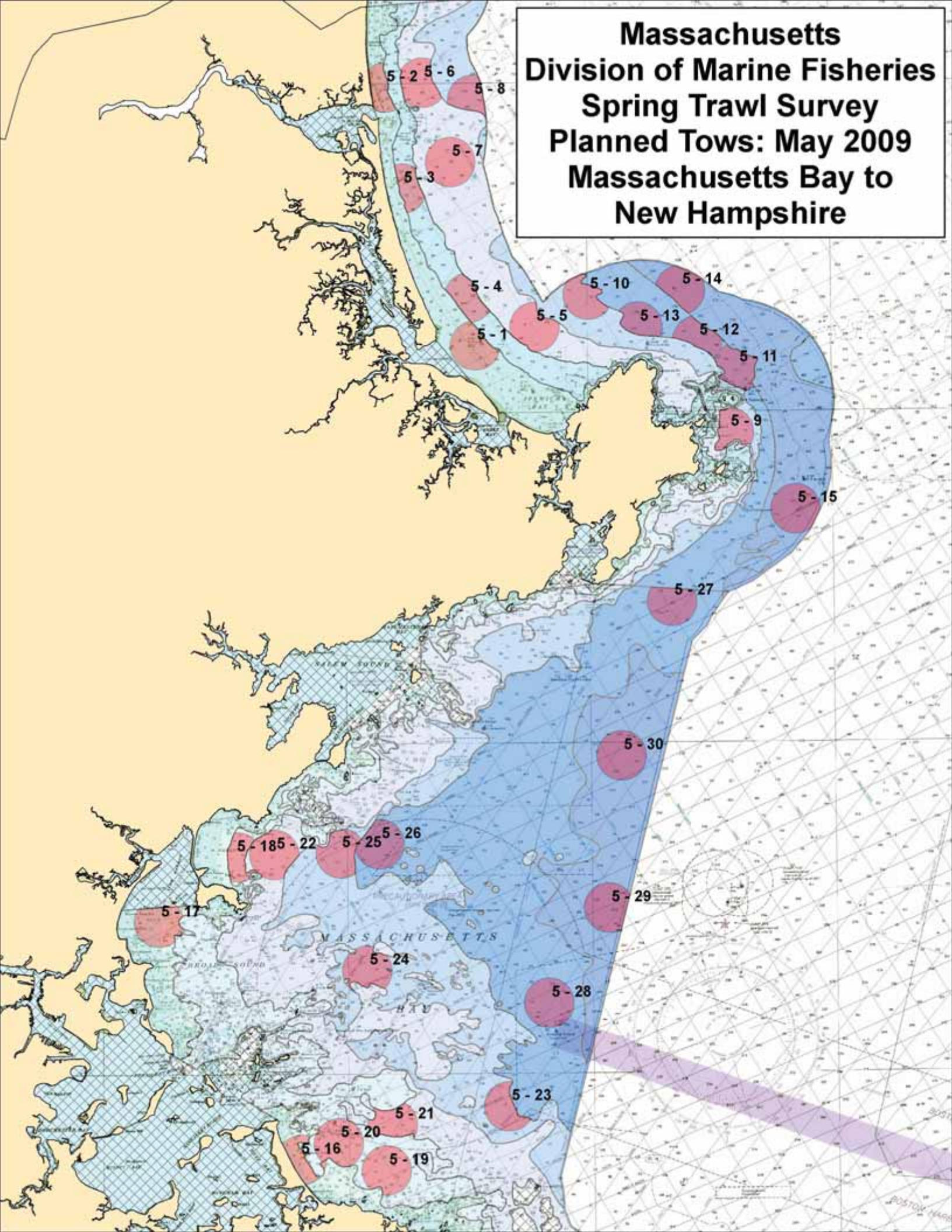
Area Description	General Description	Depth	Range of Dates	Latitude	Longitude	Loran		Sta. ID#
Western Cape Cod Bay	Barnstable Harbor Channel	0 to 30	May 4 - 6	70 ° 16.68	41 ° 45.01	13934.3	\	44002.0 4 - 1
	Peaked Cliff	0 to 30	May 4 - 6	70 ° 31.42	41 ° 48.65	14006.2	\	44046.7 4 - 2
	Warren Cove	0 to 30	May 4 - 6	70 ° 36.35	41 ° 57.30	13997.3	\	44107.8 4 - 3
	N of Sandy Neck	31 to 60	May 4 - 6	70 ° 18.37	41 ° 46.02	13939.9	\	44010.8 4 - 4
	North of Boarnstable Harbor	31 to 60	May 4 - 6	70 ° 15.76	41 ° 47.51	13917.8	\	44015.9 4 - 5
	Scorton Ledge	31 to 60	May 4 - 6	70 ° 23.85	41 ° 45.69	13973.7	\	44017.0 4 - 6
	N of Scorton Ledge	61 to 90	May 4 - 6	70 ° 24.38	41 ° 47.37	13969.6	\	44028.2 4 - 7
	NE of Center Hill Point	61 to 90	May 4 - 6	70 ° 27.79	41 ° 53.04	13964.5	\	44068.0 4 - 8
	NE of Rocky Point	61 to 90	May 4 - 6	70 ° 33.17	41 ° 58.31	13973.3	\	44108.8 4 - 9
	NE of Manomet	91 to 120	May 4 - 6	70 ° 28.27	41 ° 55.69	13955.3	\	44084.9 4 - 10
	South of Fishing Ledge	91 to 120	May 4 - 6, 10 - 13	70 ° 18.40	41 ° 52.43	13911.2	\	44049.7 4 - 11
	SW of Fishing Ledge	91 to 120	May 10 - 13	70 ° 21.32	41 ° 54.64	13918.4	\	44067.5 4 - 12
	East of Manomet	121 to 180	May 4 - 6, 10 - 12	70 ° 23.37	41 ° 55.60	13926.3	\	44067.5 4 - 13
	NE of the Gurnet	121 to 180	May 6 - 8	70 ° 30.37	42 ° 02.49	13936.5	\	44129.0 4 - 14
	NE of the Gurnet	121 to 180	May 10 - 12	70 ° 25.93	42 ° 01.52	13914.1	\	44115.9 4 - 15
Eastern Cape Cod Bay	Target Ship	0 to 30	May 4 - 6	70 ° 02.60	41 ° 49.09	13833.5	\	44006.0 4 - 16
	West of Jeremy Point	0 to 30	May 11 - 13	70 ° 06.79	41 ° 53.93	13835.4	\	44041.0 4 - 17
	West of Griffin Island, Wellfleet	31 to 60	May 11 - 13	70 ° 06.60	41 ° 57.00	13819.8	\	44058.8 4 - 18
	West of Pamet Harbor	31 to 60	May 11 - 13	70 ° 06.82	41 ° 59.69	13808.2	\	44074.8 4 - 19
	West of Great Island	61 to 90	May 11 - 13	70 ° 10.26	41 ° 54.68	13852.2	\	44050.7 4 - 20
	West of Ryder Beach	61 to 90	May 11 - 13	70 ° 08.74	41 ° 57.85	13828.5	\	44067.1 4 - 21
	SE of Fishing Ledge	91 to 120	May 4 - 6, 11 - 13	70 ° 15.83	41 ° 52.56	13895.0	\	44046.6 4 - 22
	South of Wood End	91 to 120	May 11 - 13	70 ° 12.91	41 ° 58.88	13848.3	\	44079.5 4 - 23
	Herring Cove	121 to 180	May 11 - 14	70 ° 15.36	42 ° 02.40	13846.0	\	44104.0 4 - 24
	SW of Race Point	121 to 180	May 10 - 12	70 ° 21.34	42 ° 02.03	13883.9	\	44111.4 4 - 25
	NW of Race Point	181 +	May 12 - 14	70 ° 17.81	42 ° 06.36	13841.6	\	44131.0 4 - 26
	NW of Race Point	181 +	May 10 - 12	70 ° 21.38	42 ° 06.27	13863.8	\	44136.4 4 - 27
	W of Race Point	181 +	May 10 - 12	70 ° 24.83	42 ° 04.69	13892.5	\	44132.8 4 - 28

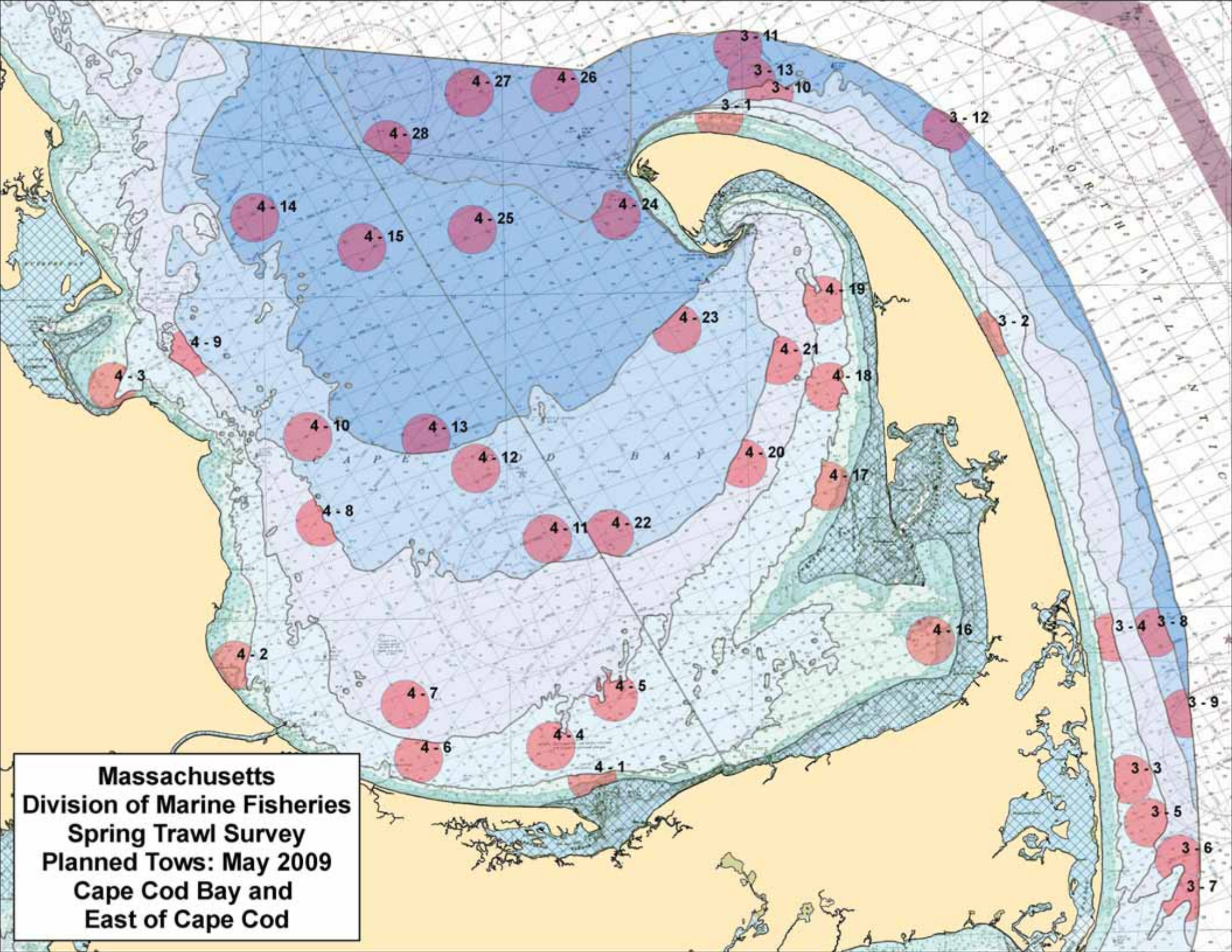
Massachusetts Division of Marine Fisheries May 2009 Spring Trawl Survey
Station Locations East of Cape Cod

* Loran coordinates taken from NOAA paper charts.
Please refer to Lat/Long. For best accuracy.

Area Description	General Description	Depth	Range of Dates	Latitude	Longitude	Loran	Sta. ID#
East of Cape Cod	Peaked Hill Bar	0 to 30	May 12 - 14	70 ° 11.02	42 ° 05.44	13805.5 \ 44114.9	3 - 1
	SE of Ballston Beach	0 to 30	May 12 - 15	69 ° 59.67	41 ° 58.61	13771.4 \ 44057.7	3 - 2
	East of Hog Island, Nauset Beach	31 to 60	May 13 - 15	69 ° 54.53	41 ° 44.70	13806.8 \ 43968.0	3 - 3
	East of Nauset Inlet	31 to 60	May 13 - 15	69 ° 55.06	41 ° 49.11	13789.9 \ 43995.0	3 - 4
	East of Strong Island, Nauset Beach	31 to 60	May 13 - 15	69 ° 53.72	41 ° 43.34	13808.3 \ 43958.7	3 - 5
	East of Nauset Beach, Chatham	61 to 90	May 13 - 15	69 ° 52.49	41 ° 42.20	13806.9 \ 43950.0	3 - 6
	East of Nauset Beach, Chatham	61 to 90	May 13 - 15	69 ° 52.31	41 ° 41.01	13811.0 \ 43942.5	3 - 7
	East of Coast Guard Beach	91 to 120	May 13 - 15	69 ° 53.32	41 ° 49.22	13779.0 \ 43993.3	3 - 8
	East of Pochet Neck	91 to 120	May 13 - 15	69 ° 52.11	41 ° 46.71	13783.8 \ 43976.7	3 - 9
	N of Peaked Hill Bar	91 to 120	May 12 - 14	70 ° 08.93	42 ° 06.16	13789.5 \ 44115.5	3 - 10
	N of Peaked Hill Bar	121 to 180	May 12 - 14	70 ° 10.19	42 ° 07.56	13790.0 \ 44125.7	3 - 11
	NE of Highland Light	121 to 180	May 12 - 14	70 ° 01.57	42 ° 04.93	13751.8 \ 44097.0	3 - 12
	NNE of Peaked Hill Bar	121 to 180	May 12 - 14	70 ° 09.65	42 ° 06.50	13792.1 \ 44118.8	3 - 13

**Massachusetts
Division of Marine Fisheries
Spring Trawl Survey
Planned Tows: May 2009
Massachusetts Bay to
New Hampshire**





**Massachusetts
Division of Marine Fisheries
Spring Trawl Survey
Planned Tows: May 2009
Cape Cod Bay and
East of Cape Cod**