



Massachusetts ADU Design Challenge | Project Cover Sheet

1. Design Team

Lead Applicant: Michelle Ouellette

Additional Applicants:

Design Firm Name (If Applicable): Woolfall Architecture + Interiors LLC

Contact Info: michelle@woolfall.llc

2. Design Information

EntryID (randomly assigned by HLC for tracking purposes): 3460

Design Name: Bower:A

ADU Gross Floor Area (square footage): 450

Unit Layout: One-Bedroom

ADU Height (feet): 15

Window/Wall Ratio: 31

Foundation Type: Concrete Piers

3. Project Narrative

Very few building archetypes do a better job blending into the landscape and the existing built environment than a simple shed. Building off of this humble archetypal form, the Bower:A complements - without competing - with the Primary Dwelling Unit already present on any given site. Deep eaves extend the covered space beyond the exterior walls, windows and doors expand the view to the surrounding yard. A more private facing entry side is balanced by the opposite side with sliding doors. This creates the opportunity for the outbuilding to be sited in such a way that it works for all property occupants - either creating shared outdoor space between the buildings or allowing for private, secluded zones unique to each structure. Though simple from the exterior, the interior maximizes every cubic inch with creature comforts. The footprint is sized to fit on trailers, preserving the possibility for the structure to be prefabricated offsite.

Please note that the information contained in this file was submitted to the Executive Office of Housing and Livable Communities (HLC) by ADU Design Challenge participants and has not been independently verified by HLC or the Commonwealth of Massachusetts. Please direct questions to the designers.

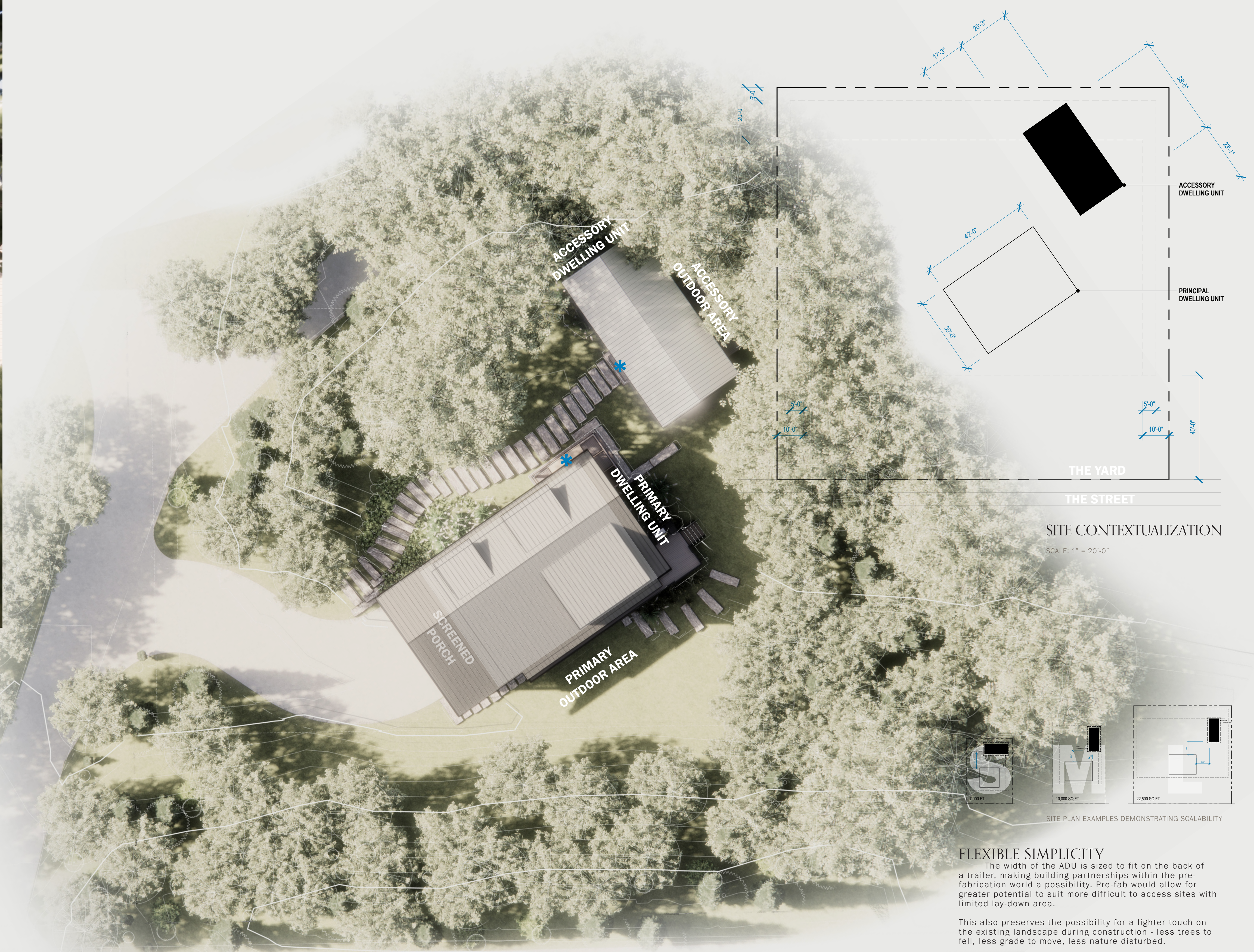


PROJECT NARRATIVE

Very few building archetypes do a better job blending into the landscape and the existing built environment than a simple shed. Building off of this humble archetypal form, this Accessory Dwelling Unit design complements - without competing - with the Primary Dwelling Unit already present on any given site.

Deep eaves extend the covered space beyond the exterior walls, windows and doors expand the view to the surrounding yard. A more private facing entry side is balanced by the opposite side with sliding doors. This creates the opportunity for the outbuilding to be sited in such a way that it works for all property occupants - either creating shared outdoor space between the buildings or allowing for private, secluded zones unique to each structure.

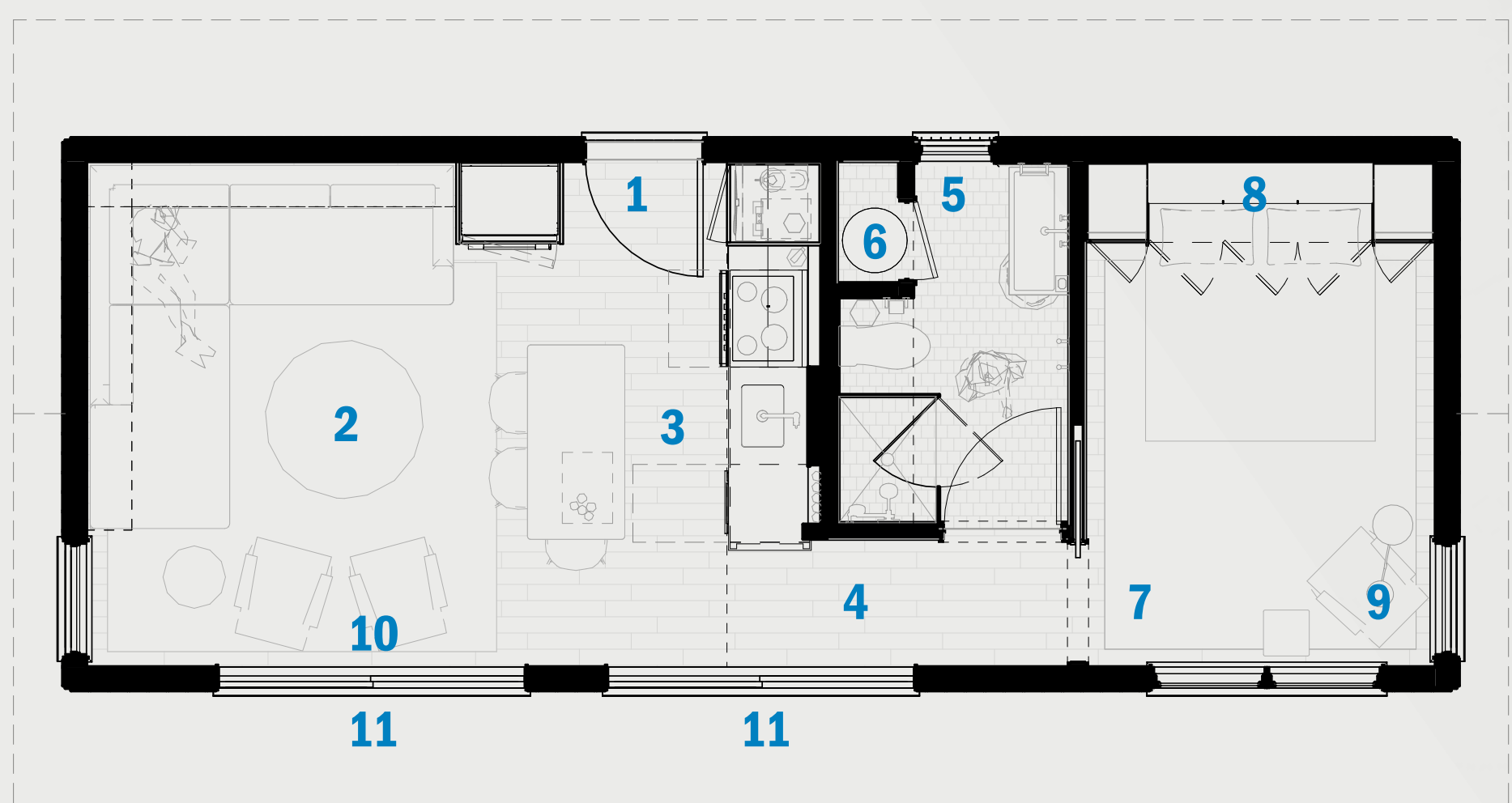
Though simple from the exterior, the interior maximizes every cubic inch with creature comforts like a built-in washer dryer in the kitchen, custom storage in the bedroom, and high ceilings.



SITE CONTEXTUALIZATION

SCALE: 1" = 20'-0"

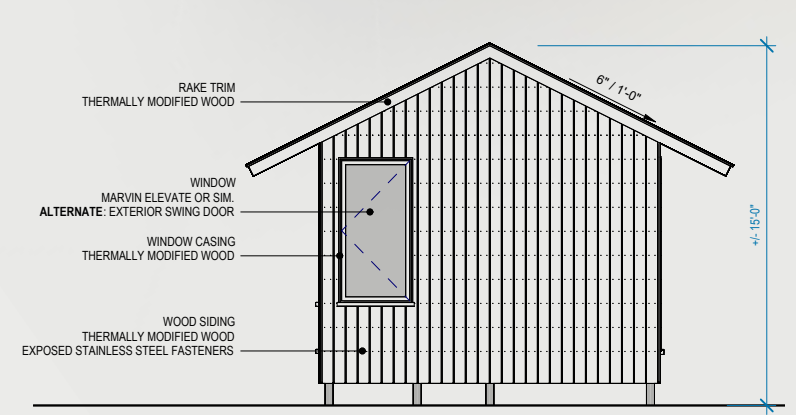
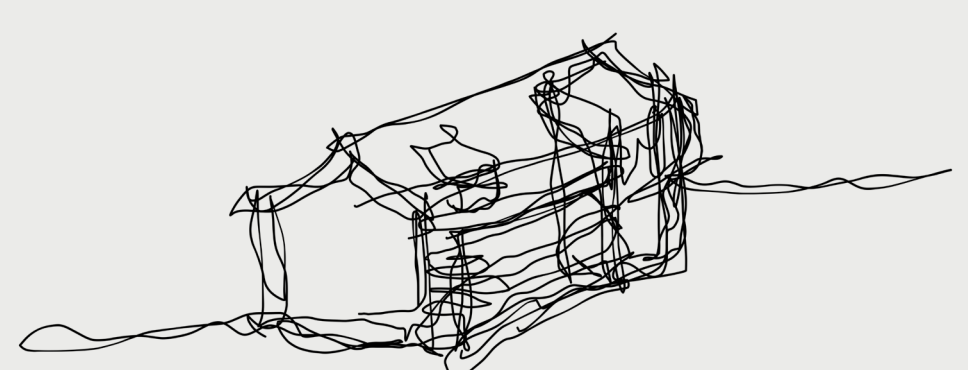
SITE PLAN EXAMPLES DEMONSTRATING SCALABILITY



FIRST FLOOR PLAN

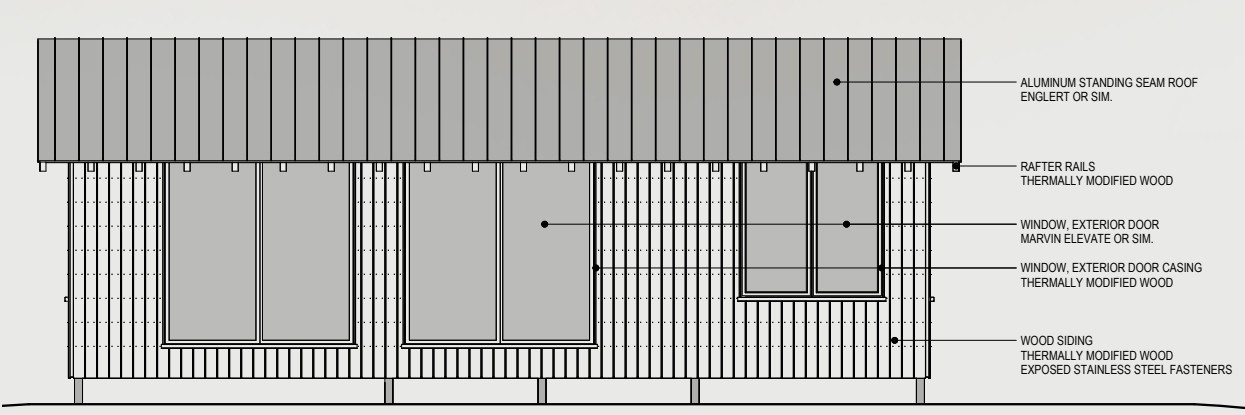
SCALE: 1" = 4'-0"

- 1 Main Entry Door
- 2 Living Room
- 3 Kitchen
- 4 Hall
- 5 Bathroom
- 6 Mechanical
- 7 Bedroom
- 8 Bedroom Closet
- 9 The Laundry Storage Chair
- 10 Projector Screen Location
- 11 Sliding Doors



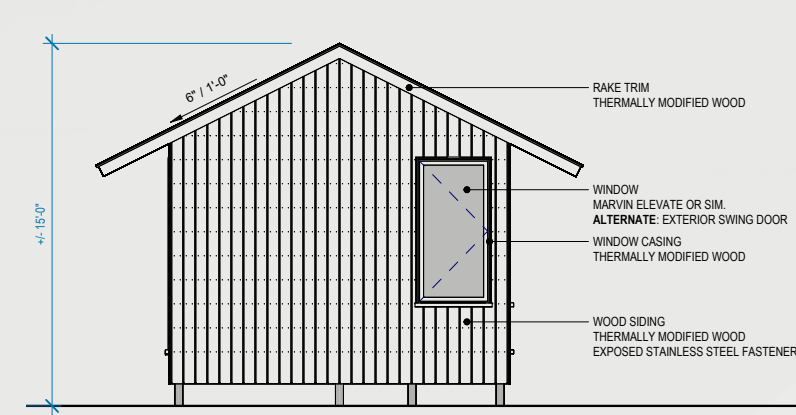
BEDROOM ELEVATION

SCALE: 1" = 8'-0"



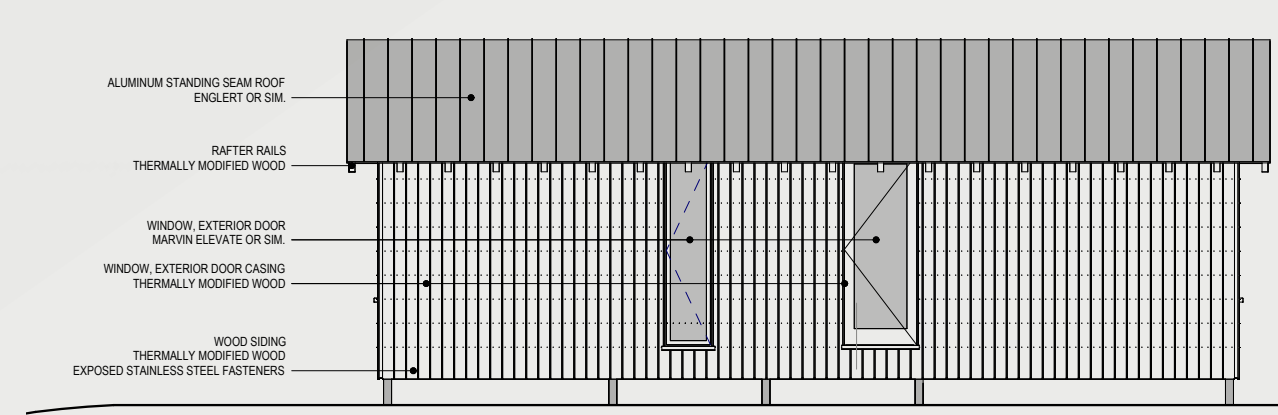
DECK-SIDE ELEVATION

SCALE: 1" = 8'-0"



LIVING ELEVATION

SCALE: 1" = 8'-0"



ENTRY-SIDE ELEVATION

SCALE: 1" = 8'-0"

FLEXIBLE SIMPLICITY

The width of the ADU is sized to fit on the back of a trailer, making building partnerships within the pre-fabrication world a possibility. Pre-fab would allow for greater potential to suit more difficult to access sites with limited lay-down area.

This also preserves the possibility for a lighter touch on the existing landscape during construction - less trees to fell, less grade to move, less nature disturbed.



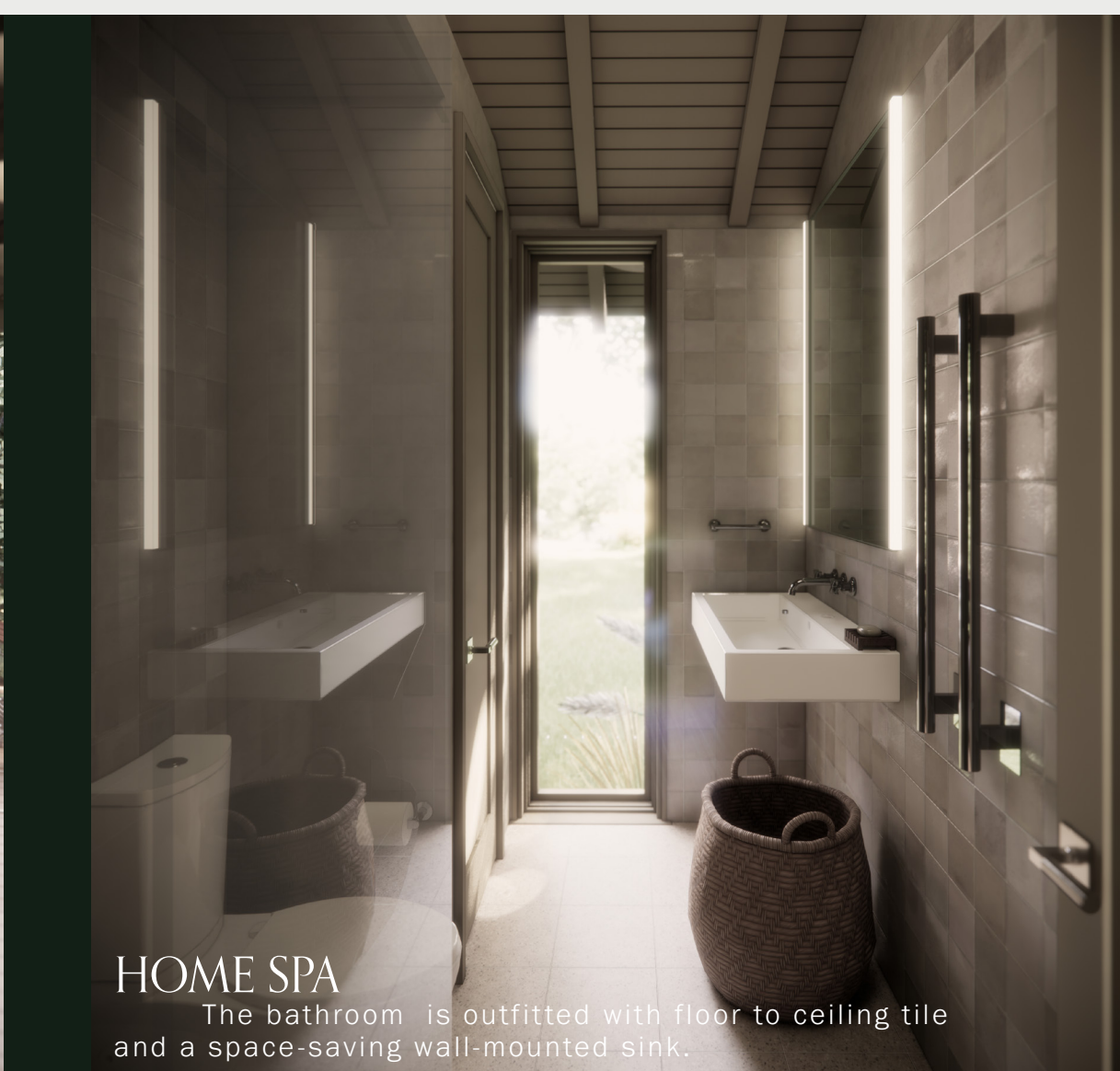
ENTRY-SIDE VIEW
A shared front approach from the driveway to two separate front doors.



DECK-SIDE VIEW
Sited with a more private "secondary" backyard and deck off the ADU.



INTERIOR VIEW
Warm, natural materials with an eating kitchen and appliances hidden behind panels or doors.

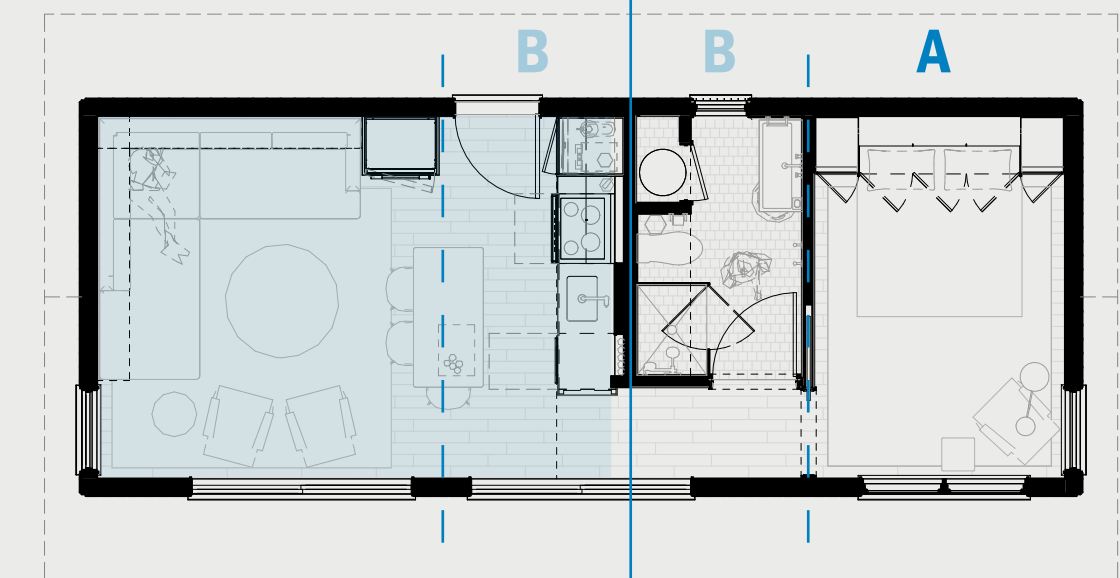


HOME SPA
The bathroom is outfitted with floor to ceiling tile and a space-saving wall-mounted sink.

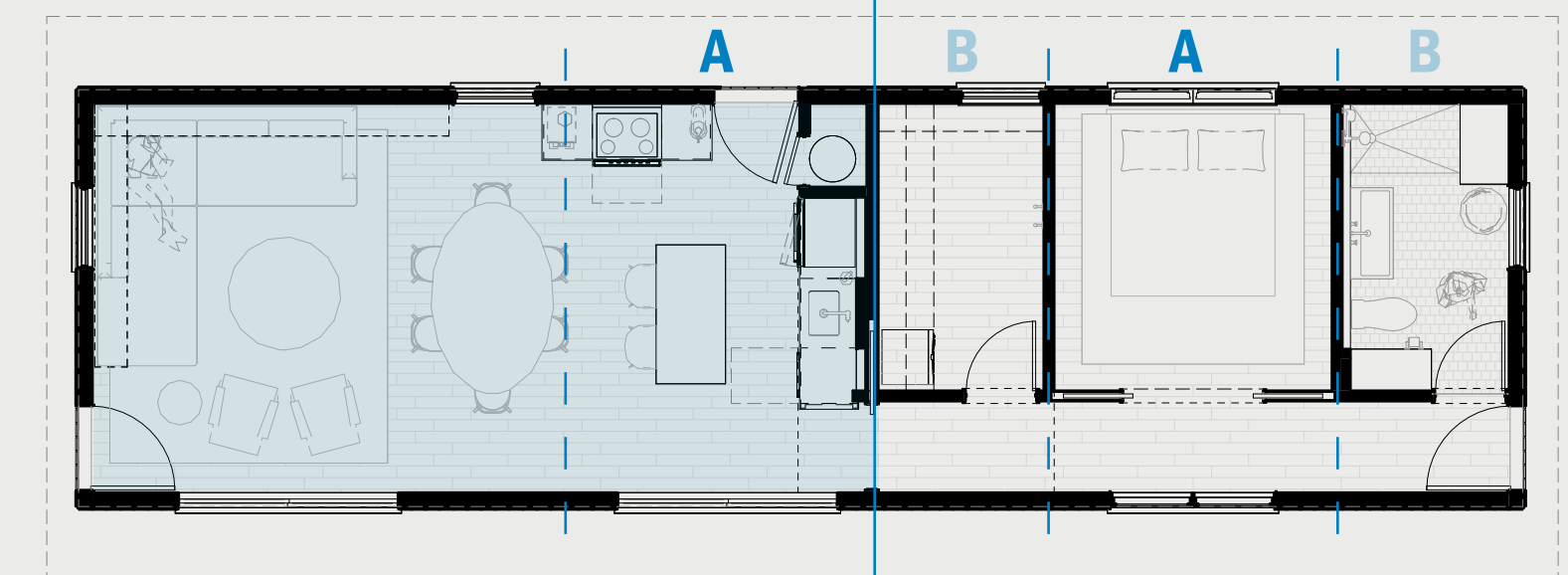
SMALL BUT MIGHTY

On the exterior, cladding is shown in a more unusual vertical orientation - if paired with a more New England horizontal clapboard no issue with it not matching! A thermally modified wood cladding product paired with durable, standard size, high-performance windows allow for a flexible selection of colors and function.

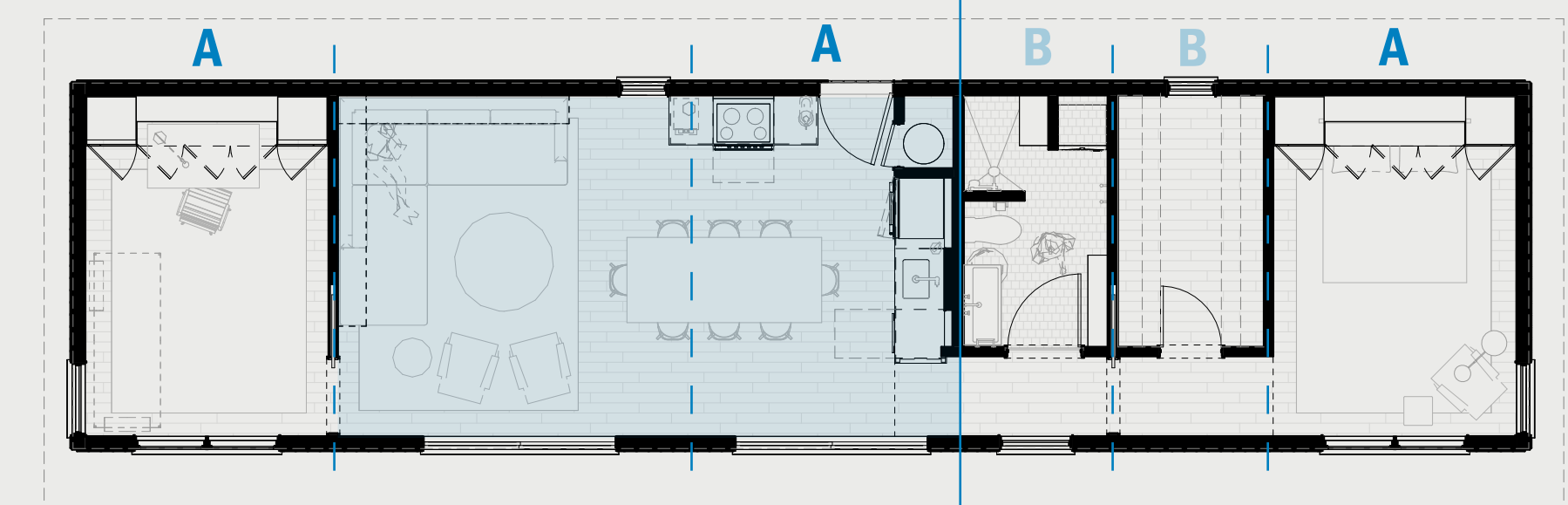
A smaller footprint without sacrificing style, this design posits an interior space with no ubiquitous painted white drywall - introducing tactile, natural materials wherever possible. When each surface is ever-present in a small space, every material must be beautiful, healthy, and durable.



BOWER:A



BOWER:A2



BOWER:A3

SWISS ARMY KNIFE

The "Bower:A" ADU is 450 gross square feet. However, the design was created with the idea of modularity to be customized to different needs.

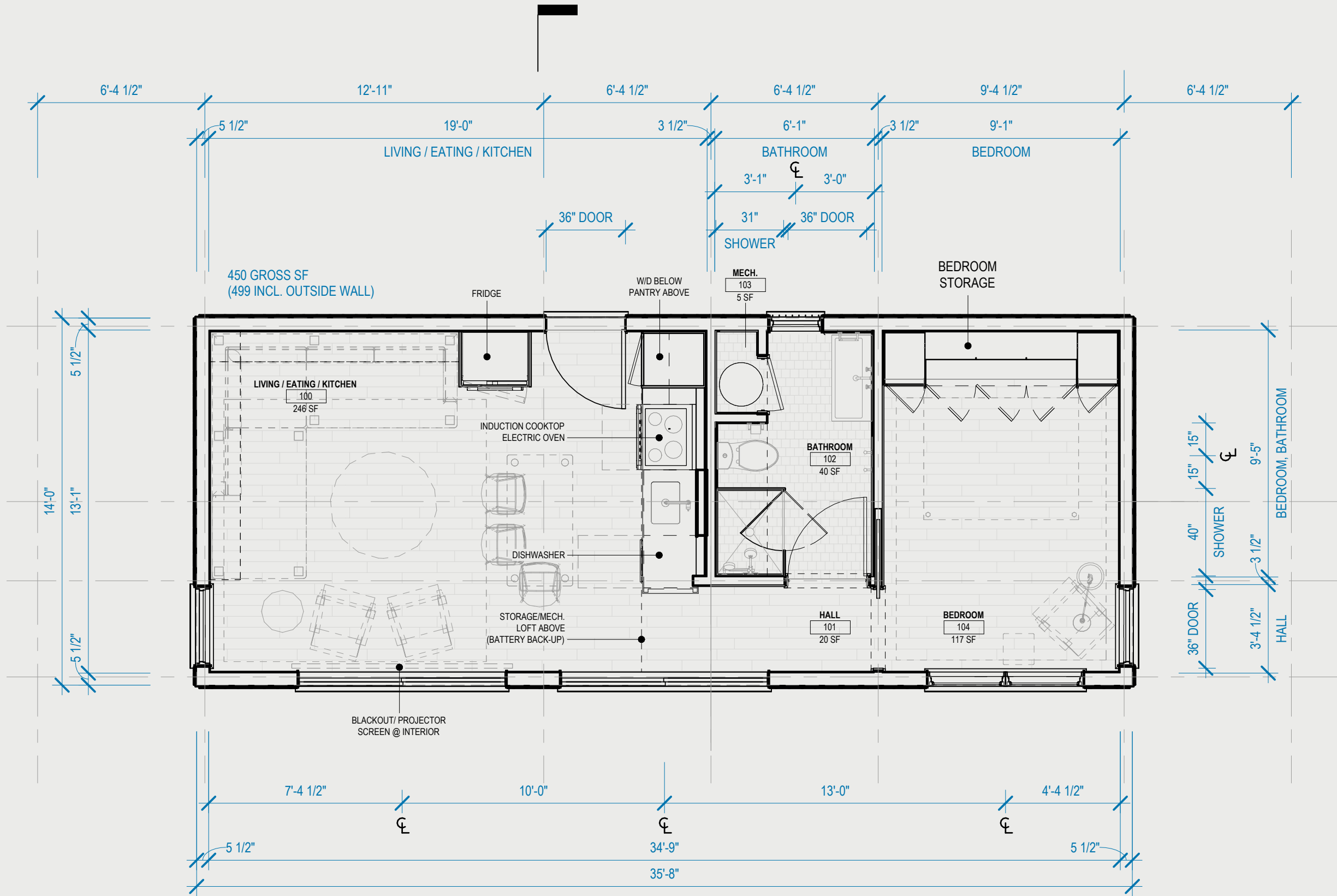
Module A is of a size suited to bathrooms, walk-in closets, or small offices (if unconditioned space mudrooms or outdoor showers are also a good fit).

Module B is appropriate to bedrooms, media rooms, libraries, or larger offices (again, if unconditioned then a 3-season porch, entry portico, or deck area are also a possibility).

A hallway at the exterior wall links the A and B modules while allowing for the Living/Eating/Kitchen area to benefit from that added width.

Exterior windows and doors are sized similarly to allow for alternate door locations at the ends. Potential exterior walkway, arbor, or landscape design features would allow for multiple points of linkage to tie the ADU into the site.

The dashed lines above are indicative of a structural grid as well.

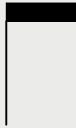


C

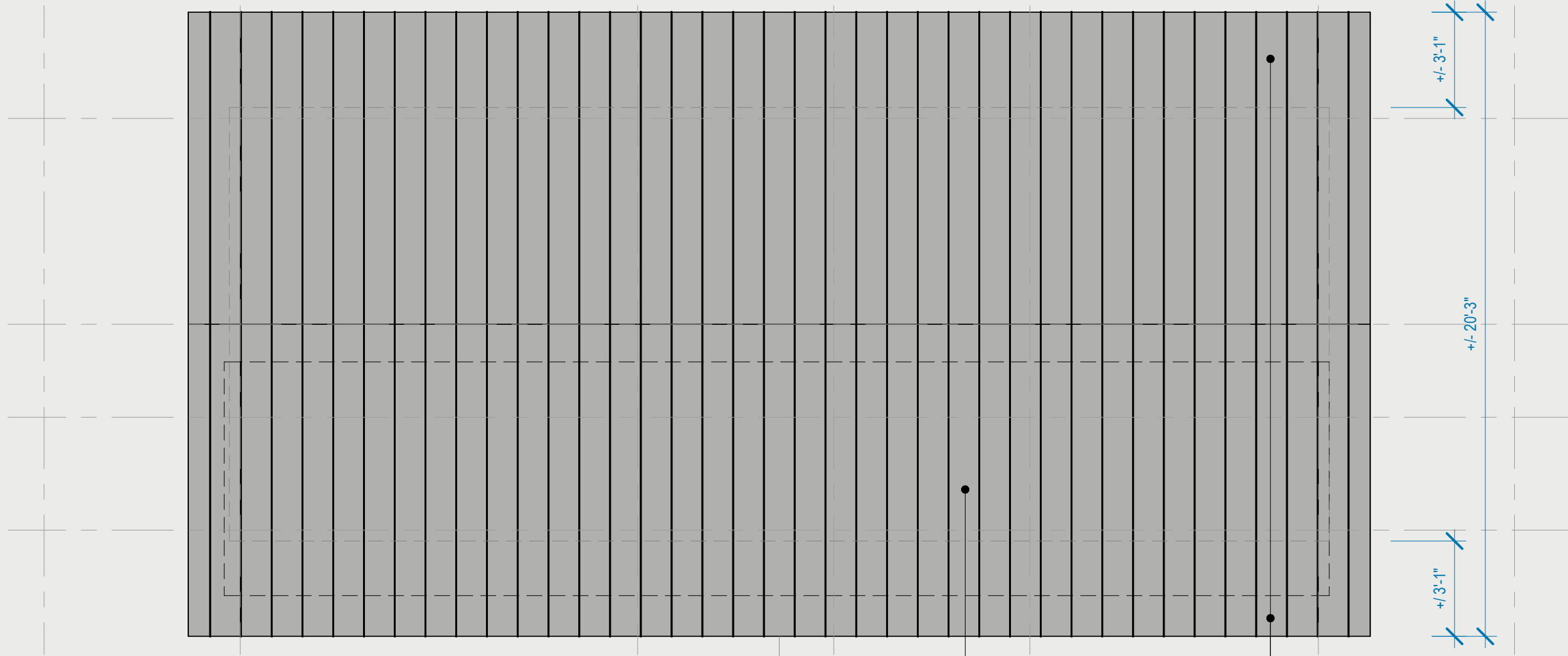
SCALED FLOOR PLAN

1" = 4'-0"

FIRST FLOOR



38'-5"



SOLAR ARRAY ROOF

DEEP EAVES TO BETTER PROTECT EXTERIOR FINISHES AND PROVIDE SOLAR SHADING

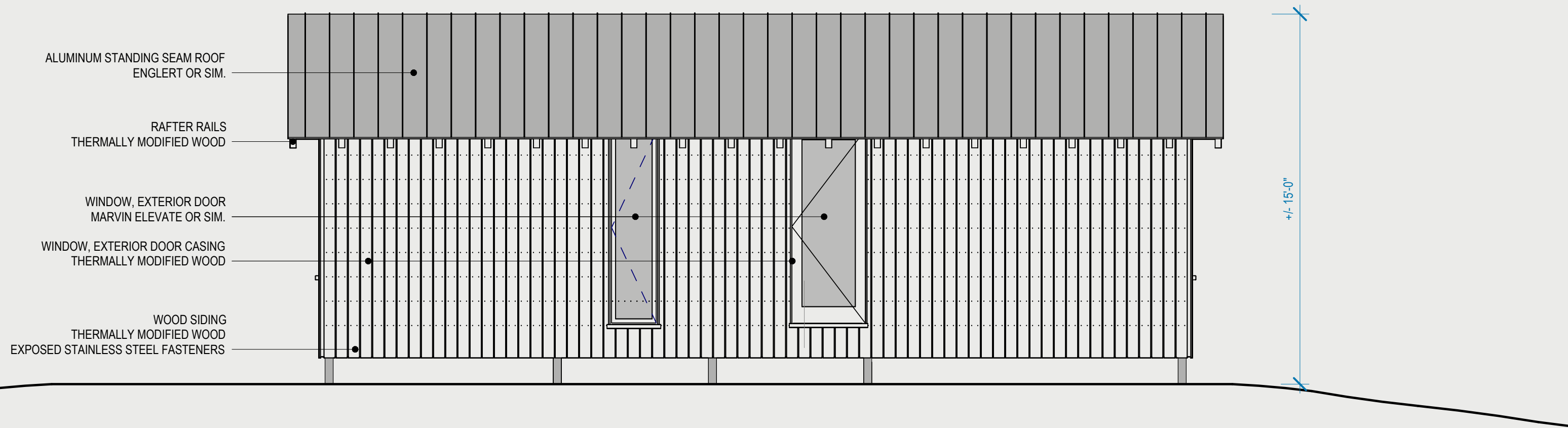


C

SCALED FLOOR PLAN

1" = 4'-0"

ROOF

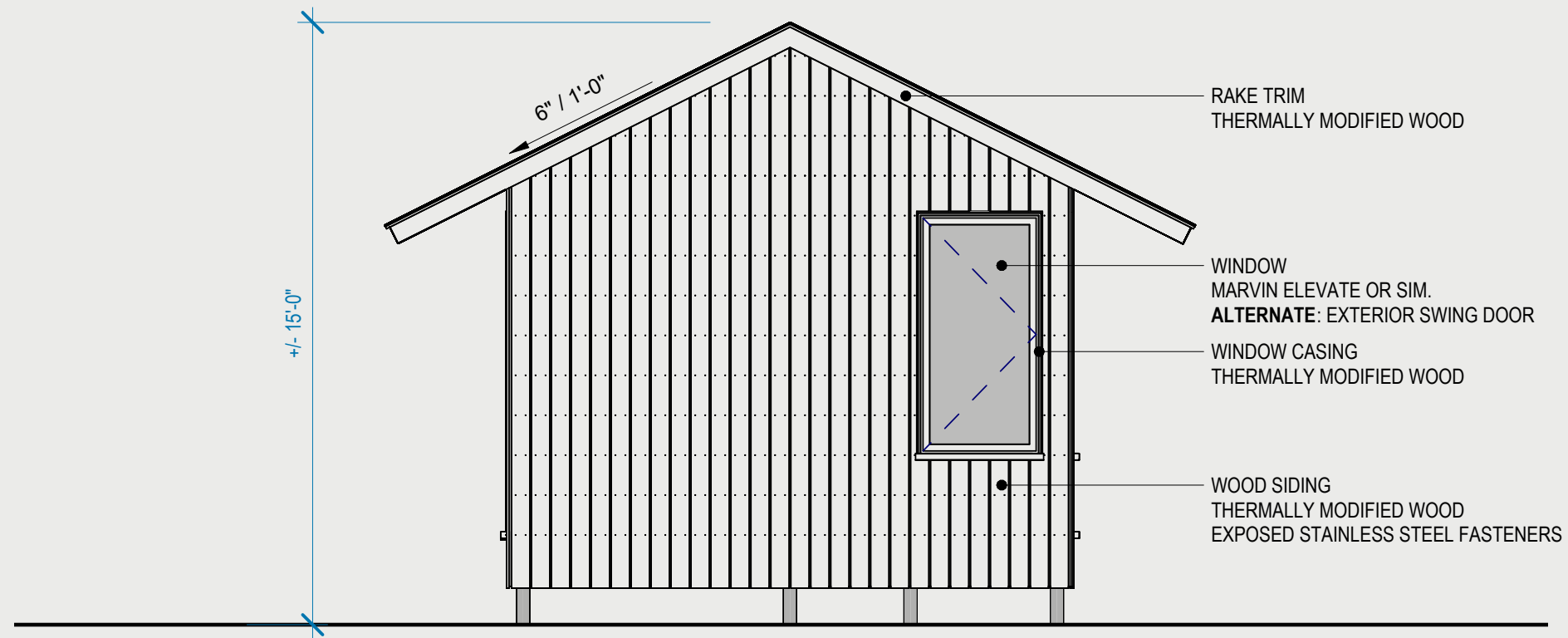


D

EXTERIOR ELEVATIONS

1" = 4'-0"

ENTRY-SIDE ELEVATION

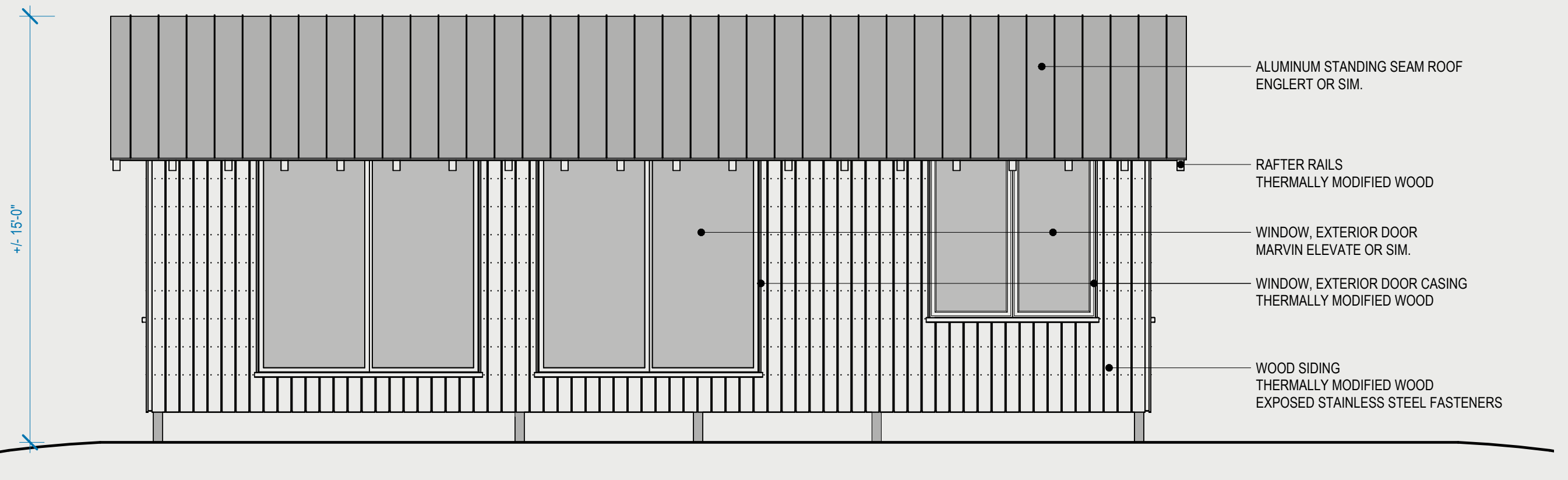


D

EXTERIOR ELEVATIONS

1" = 4'-0"

LIVING ELEVATION

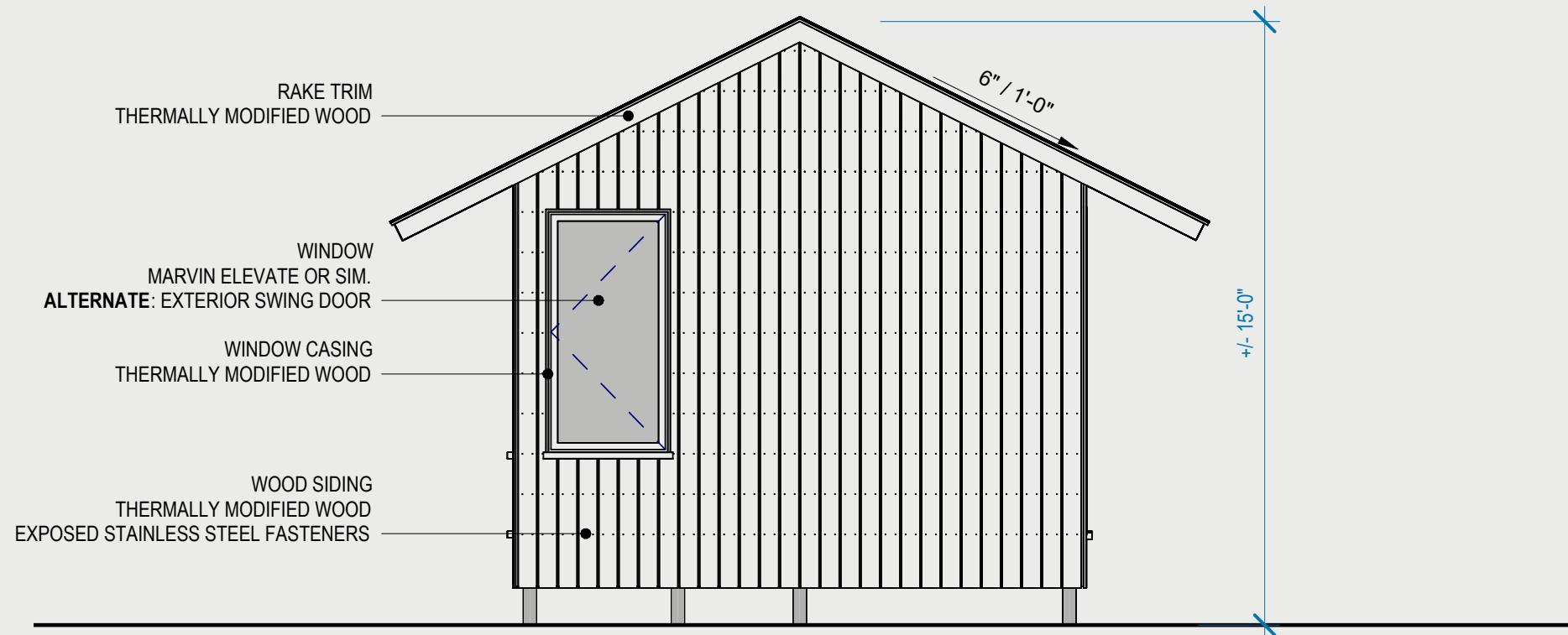


D

EXTERIOR ELEVATIONS

1" = 4'-0"

DECK-SIDE ELEVATION



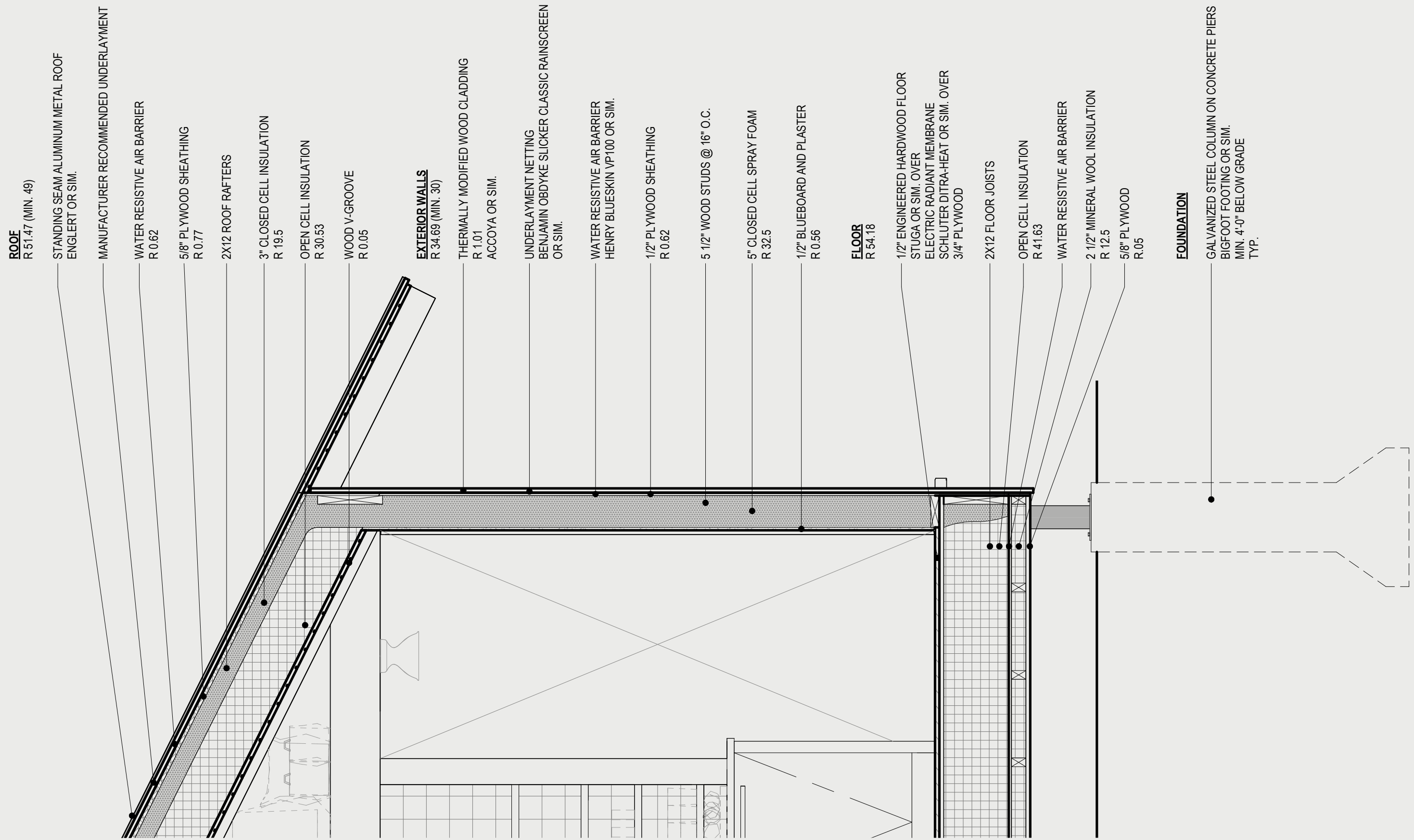
D

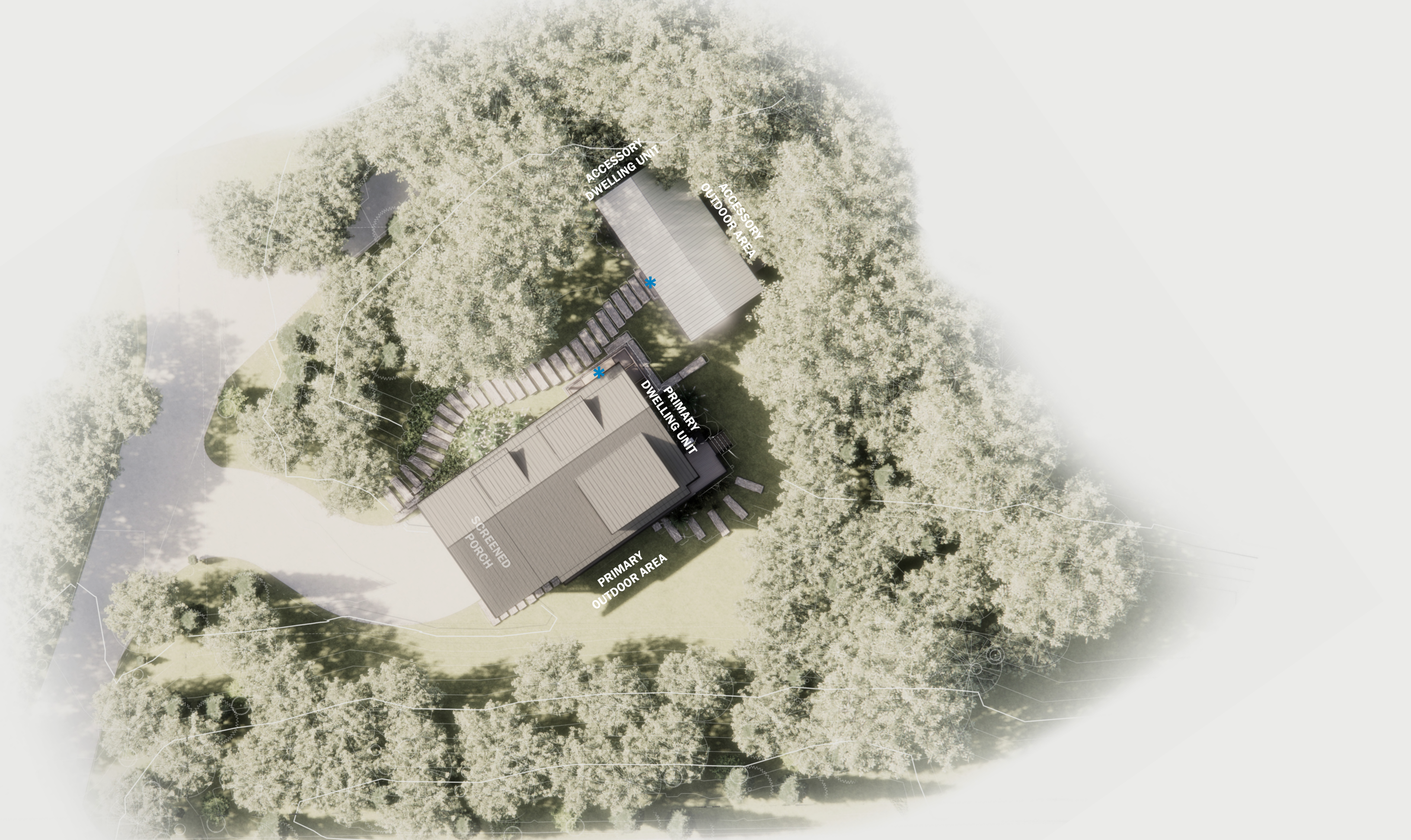
EXTERIOR ELEVATIONS

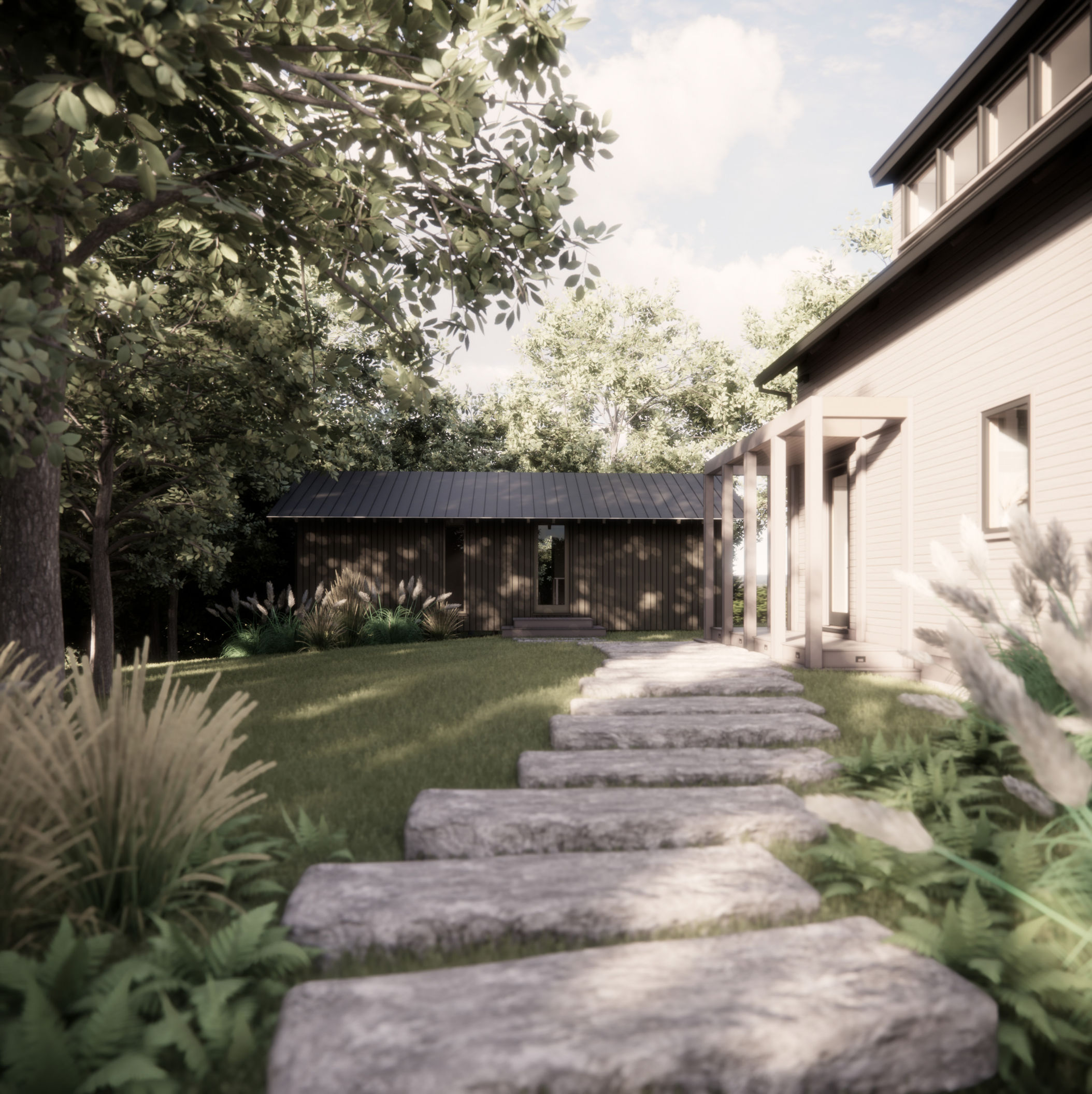
1" = 4'-0"

LIVING ELEVATION

WALL SECTION







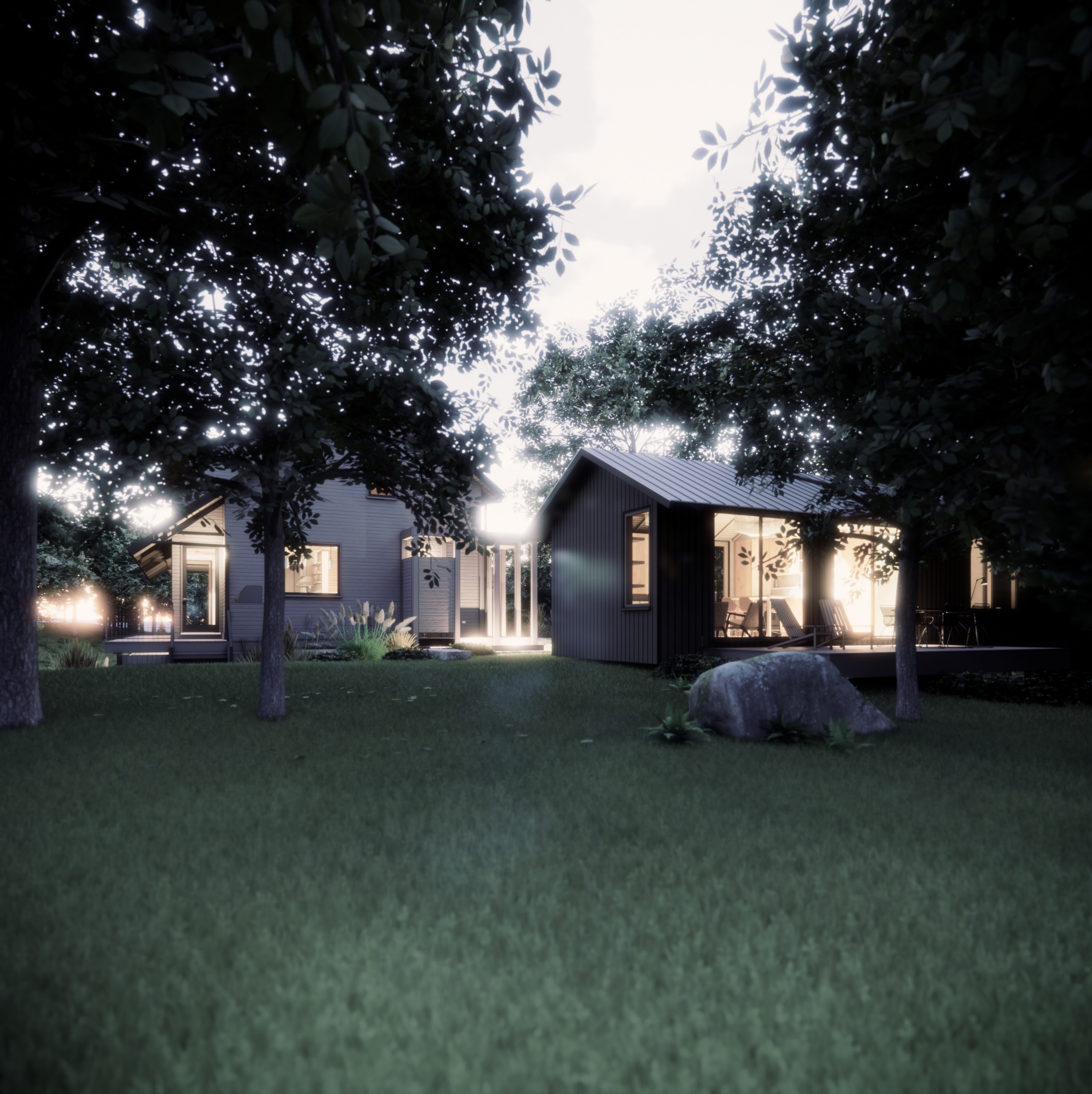
ENTRY-SIDE VIEW

A shared front approach from the driveway to two separate front doors.



INTERIOR VIEW

Warm, natural materials with an eat-in kitchen and appliances hidden behind panels or doors.



TWILIGHT

Quietly aglow with occupants of both dwelling units settled in for the night.

SWISS ARMY KNIFE

The “Bower:A” ADU is 500 gross square feet. However, the design was created with the idea of modularity to be customized to different needs.

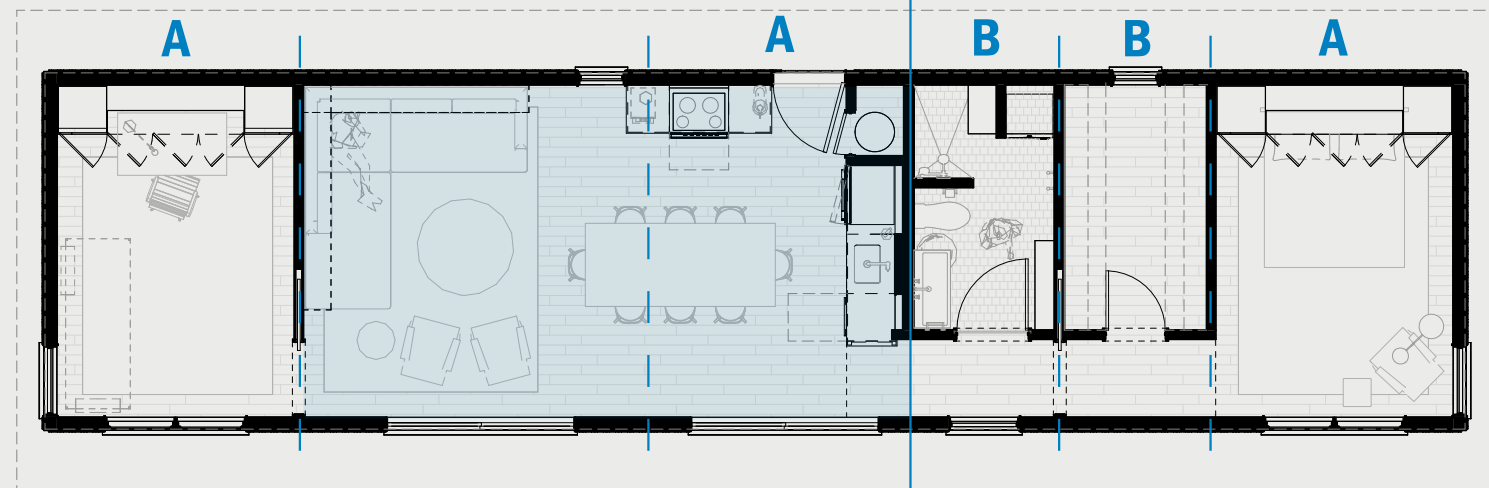
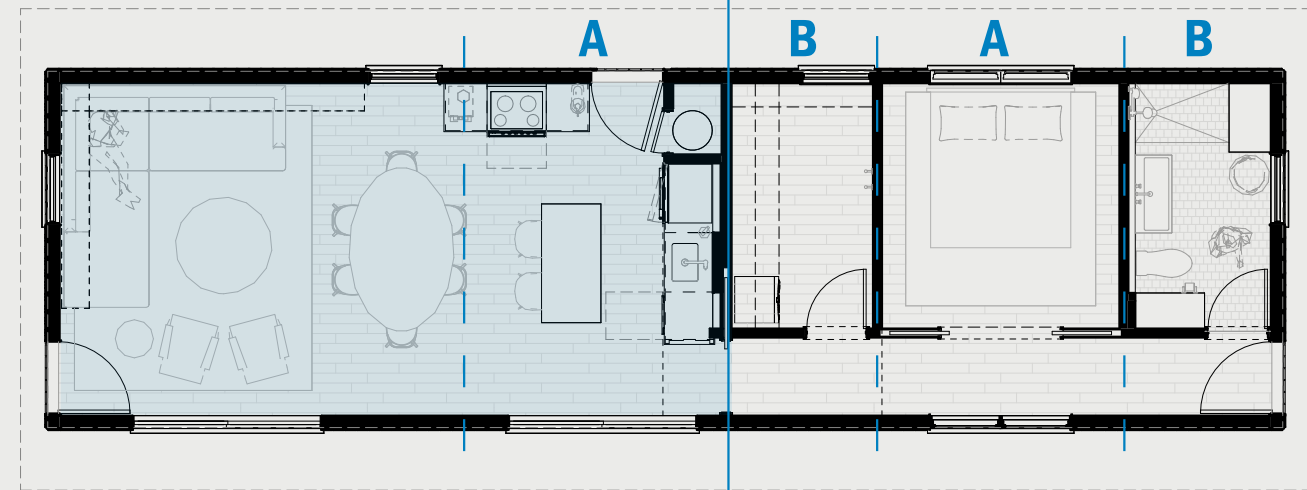
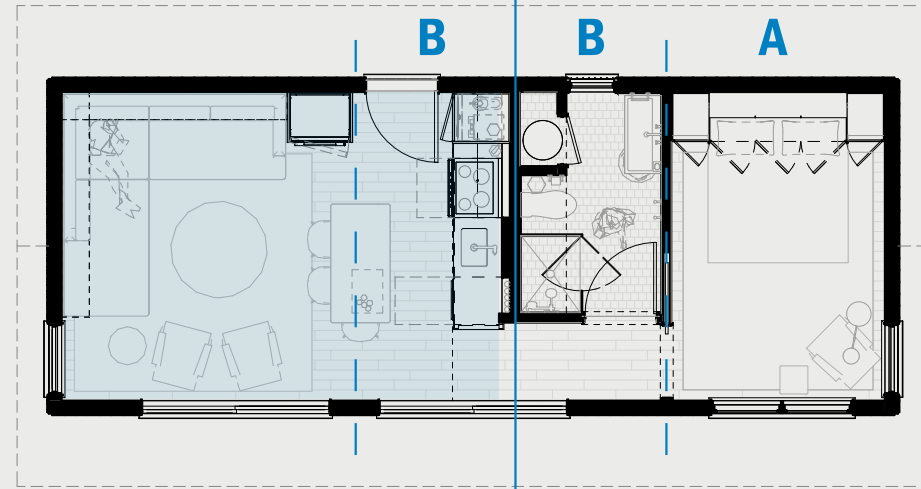
Module A is of a size suited to bathrooms, walk-in closets, or small offices (if unconditioned space mudrooms or outdoor showers are also a good fit).

Module B is appropriate to bedrooms, media rooms, libraries, or larger offices (again, if unconditioned then a 3-season porch, entry portico, or deck area are also a possibility).

An exterior hallway links the A and B modules while allowing for the Living/Eating/Kitchen area to benefit from that added width.

Exterior windows and doors are sized similarly to allow for alternate door locations at the ends. Potential exterior walkway, arbor, or landscape design features would allow for multiple points of linkage to tie the ADU into the site.

The dashed lines above are indicative of a structural grid as well.

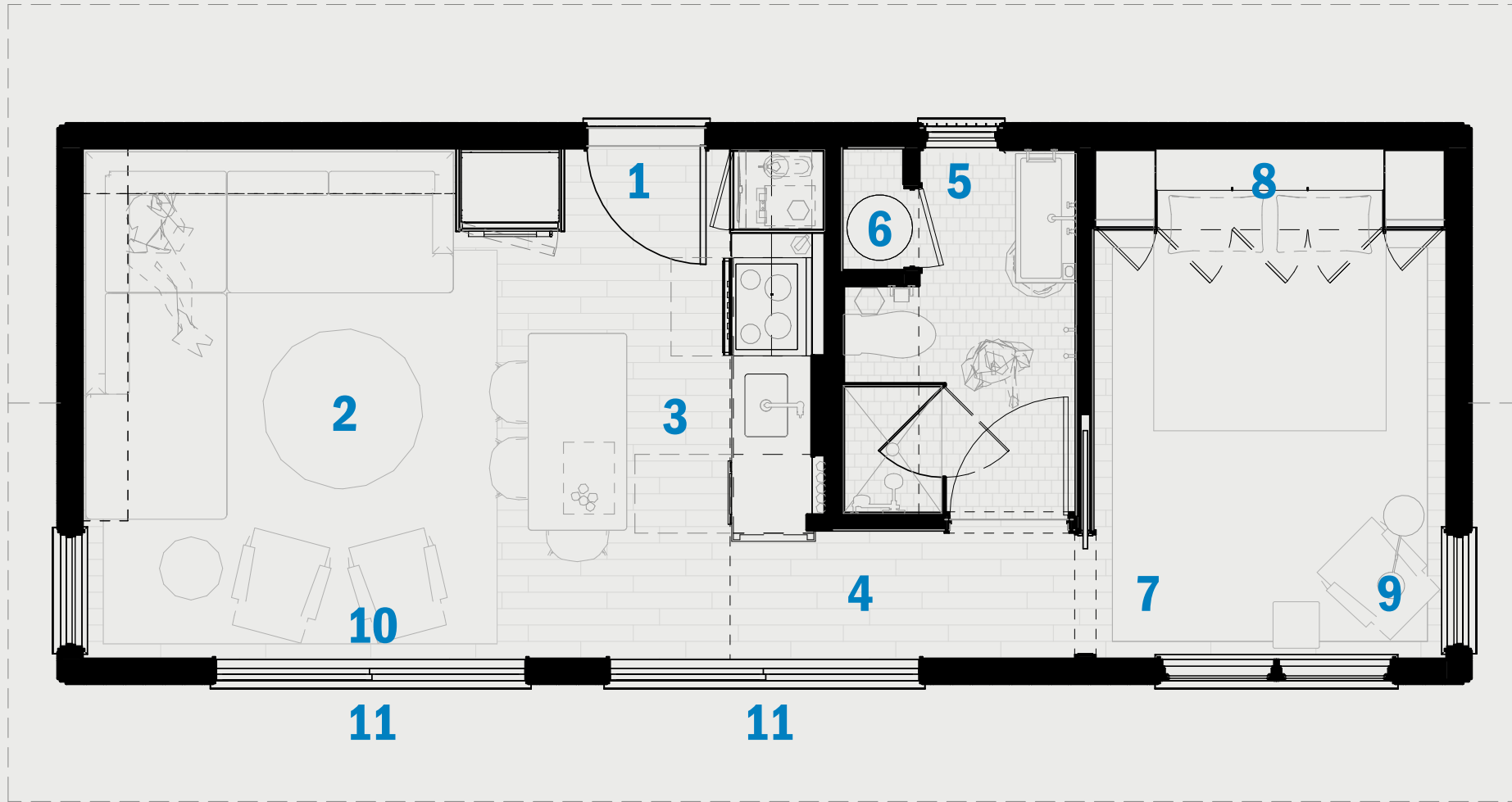


BOWER:A
BOWER:A2
BOWER:A3



HOME SPA

The bathroom is outfitted with floor to ceiling tile and a space-saving wall-mounted sink.



- 1** Main Entry Door
- 2** Living Room
- 3** Kitchen
- 4** Hall
- 5** Bathroom
- 6** Mechanical
- 7** Bedroom
- 8** Bedroom Closet
- 9** The Laundry Storage Chair
- 10** Projector Screen Location
- 11** Sliding Doors



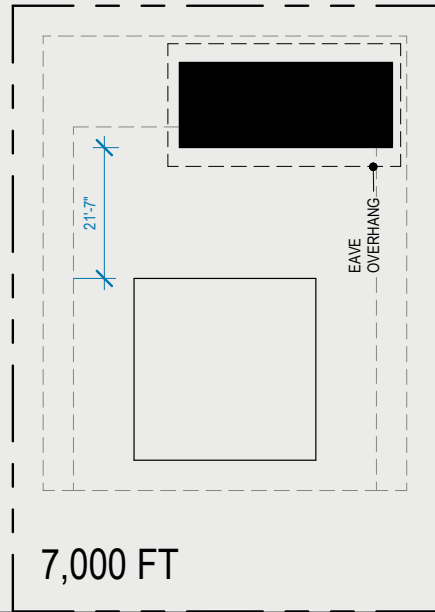
DECK-SIDE VIEW

Sited with a more private “secondary” backyard and deck off the ADU.

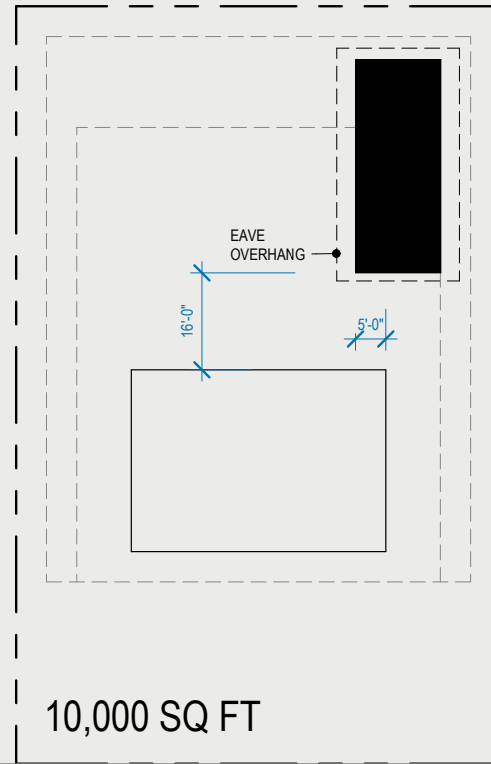


BEDROOM

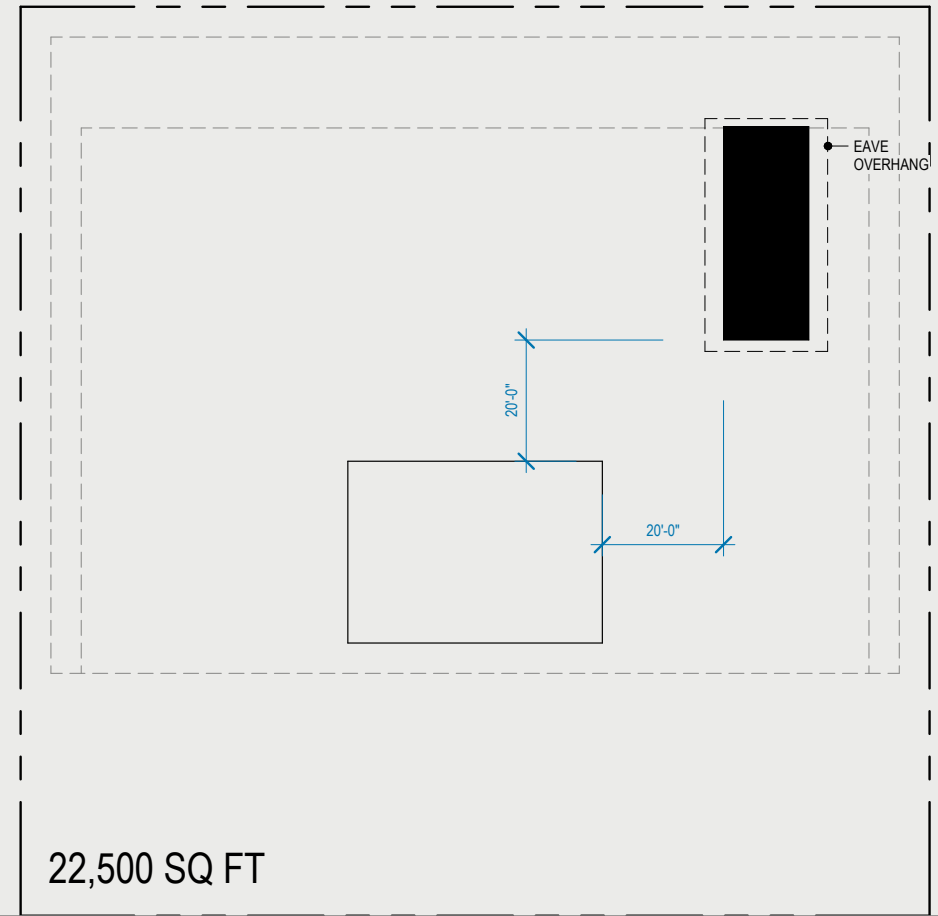
Built in storage both behind and under the bed allow the bedroom itself to remain a quiet refuge.



S



M



L