



## *Massachusetts ADU Design Challenge | Project Cover Sheet*

### **1. Design Team**

---

Lead Applicant: Joshua Aronson  
Additional Applicants: Ellen Davis  
Design Firm Name (If Applicable):  
Contact Info: joshua.aronson@gmail.com

### **2. Design Information**

---

EntryID (randomly assigned by HLC for tracking purposes): 3561  
Design Name: Small House with a Long Room  
ADU Gross Floor Area (square footage): 900  
Unit Layout: Two-Bedroom or more  
ADU Height (feet): 24.667  
Window/Wall Ratio: 8.7%  
Foundation Type: Wall section shows a concrete frost wall, but any of these foundations can work with slight modification

### **3. Project Narrative**

---

This 900-square-foot accessory dwelling unit draws on the traditional New England vernacular, embracing the simplicity and utility of a compact, rectangular footprint with gabled ends. However, the floor plan is a departure from convention. Instead of entering through a central door which divides the rectangular footprint into two squares, this floor plan divides along the long axis to create one long, south-facing room for cooking, dining, and lounging - a room for living. Bedrooms, bathrooms, and utility spaces are neatly tucked away, creating many opportunities for privacy. These private bedrooms can be easily re-imagined as other types of spaces to suit the occupant's needs, while the sun-filled long room remains constant and central - a contemporary hearth. The design blends familiarity, flexibility, and comfort in the hope that these qualities will extend the New England tradition of well-loved homes that remain of value long into the future.

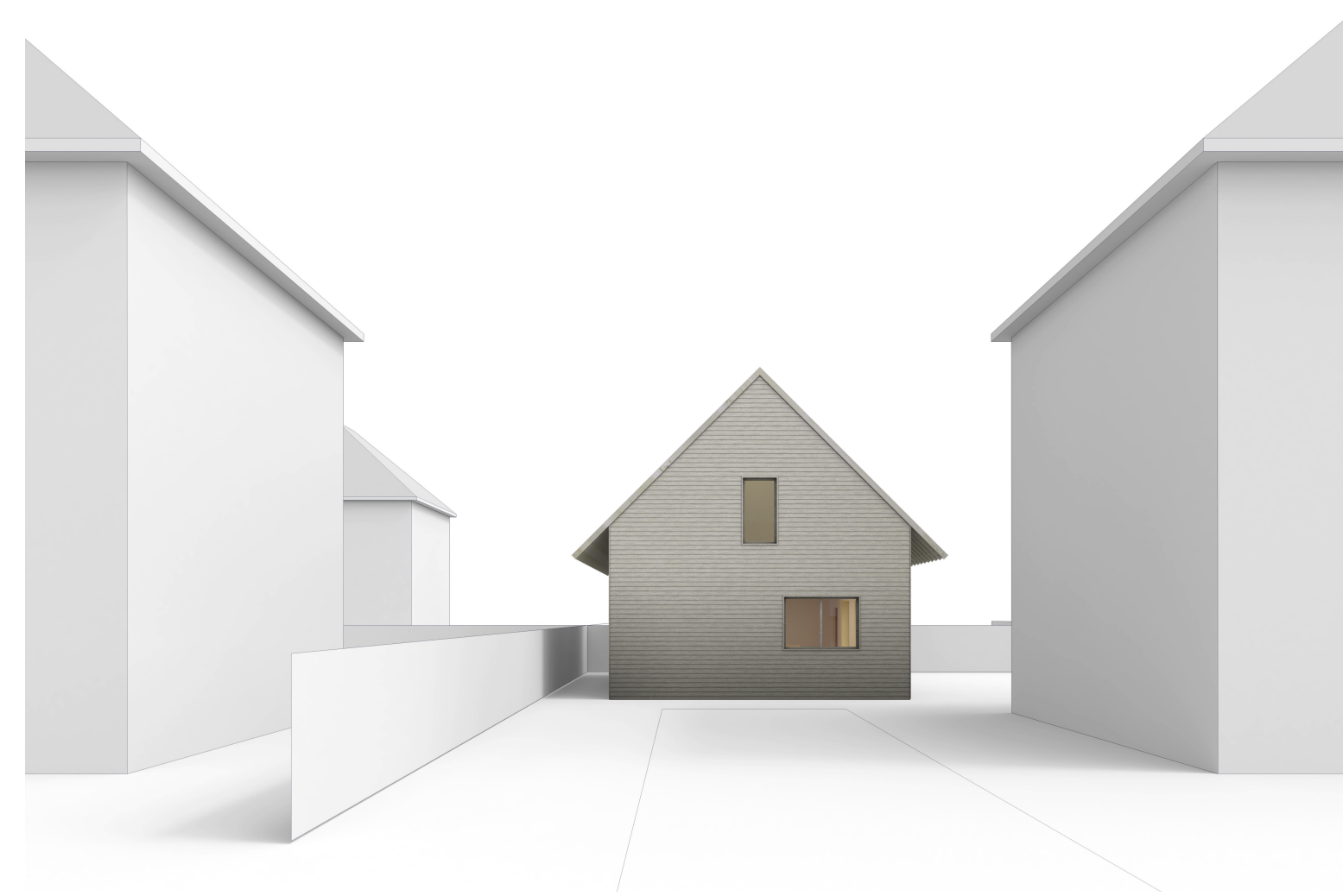
***Please note that the information contained in this file was submitted to the Executive Office of Housing and Livable Communities (HLC) by ADU Design Challenge participants and has not been independently verified by HLC or the Commonwealth of Massachusetts. Please direct questions to the designers.***

# SMALL HOUSE WITH A LONG ROOM

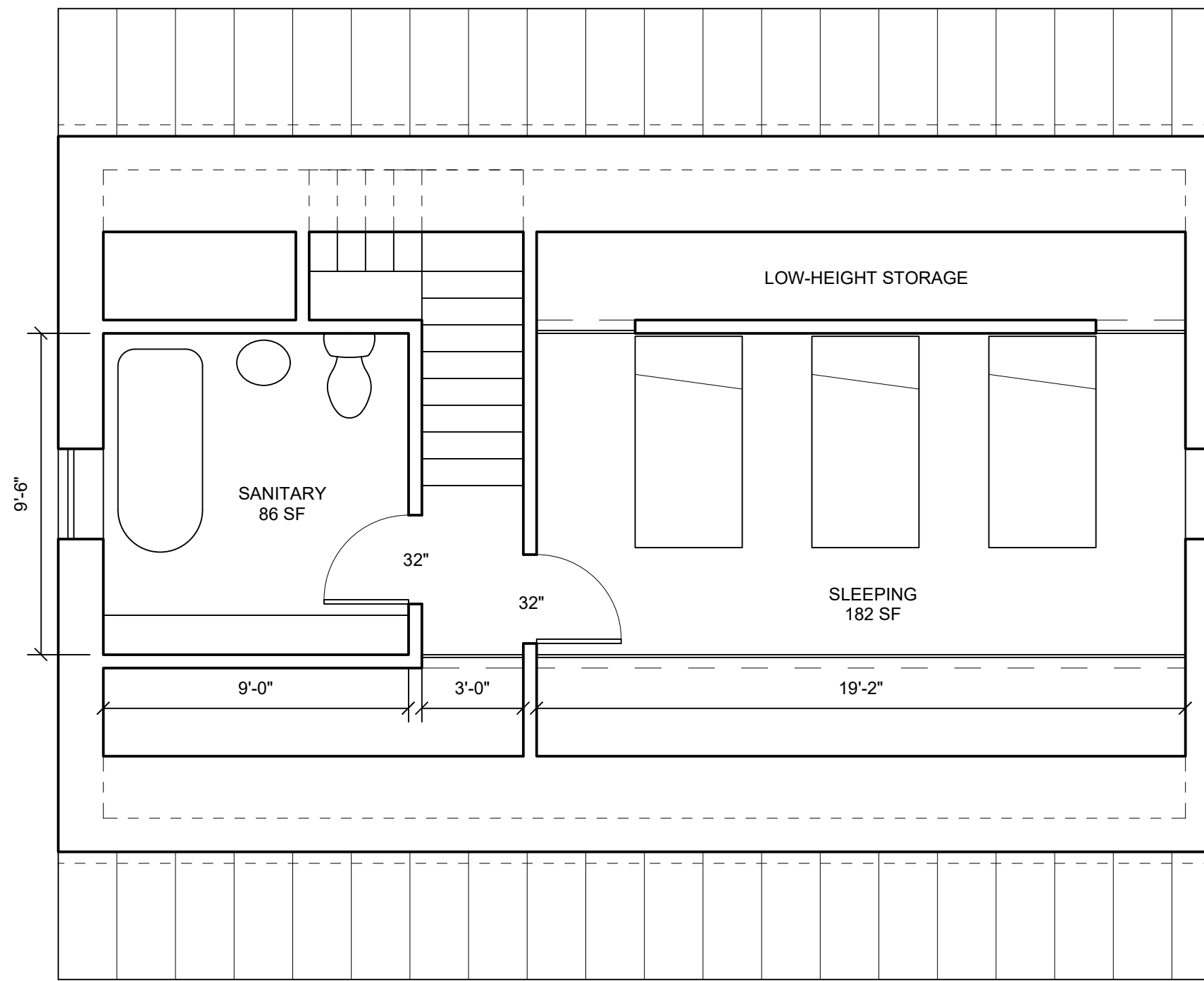
This 900-square-foot accessory dwelling unit draws on the traditional New England vernacular, embracing the simplicity and utility of a compact, rectangular footprint with gabled ends.

However, the floor plan is a departure from convention. Instead of entering through a central door which divides the rectangular footprint into two squares, this floor plan divides along the long axis to create one long, south-facing room for cooking, dining, and lounging - a room for living. Bedrooms, bathrooms, and utility spaces are neatly tucked away, creating many opportunities for privacy. These private bedrooms can be easily re-imagined as other types of spaces to suit the occupant's needs, while the sun-filled long room remains constant and central - a contemporary hearth.

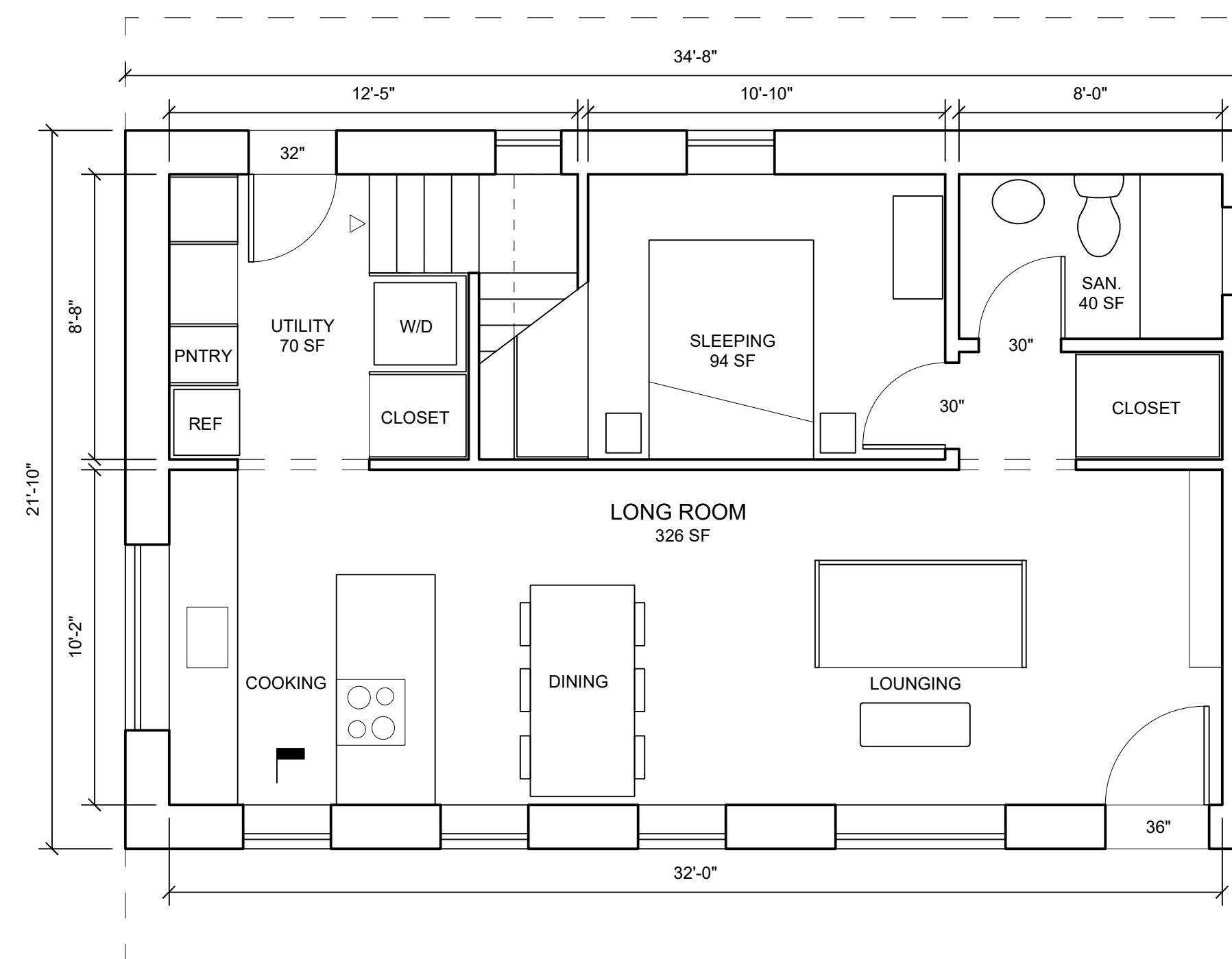
The design blends familiarity, flexibility, and comfort in the hope that these qualities will extend the New England tradition of well-loved homes that remain of value long into the future.



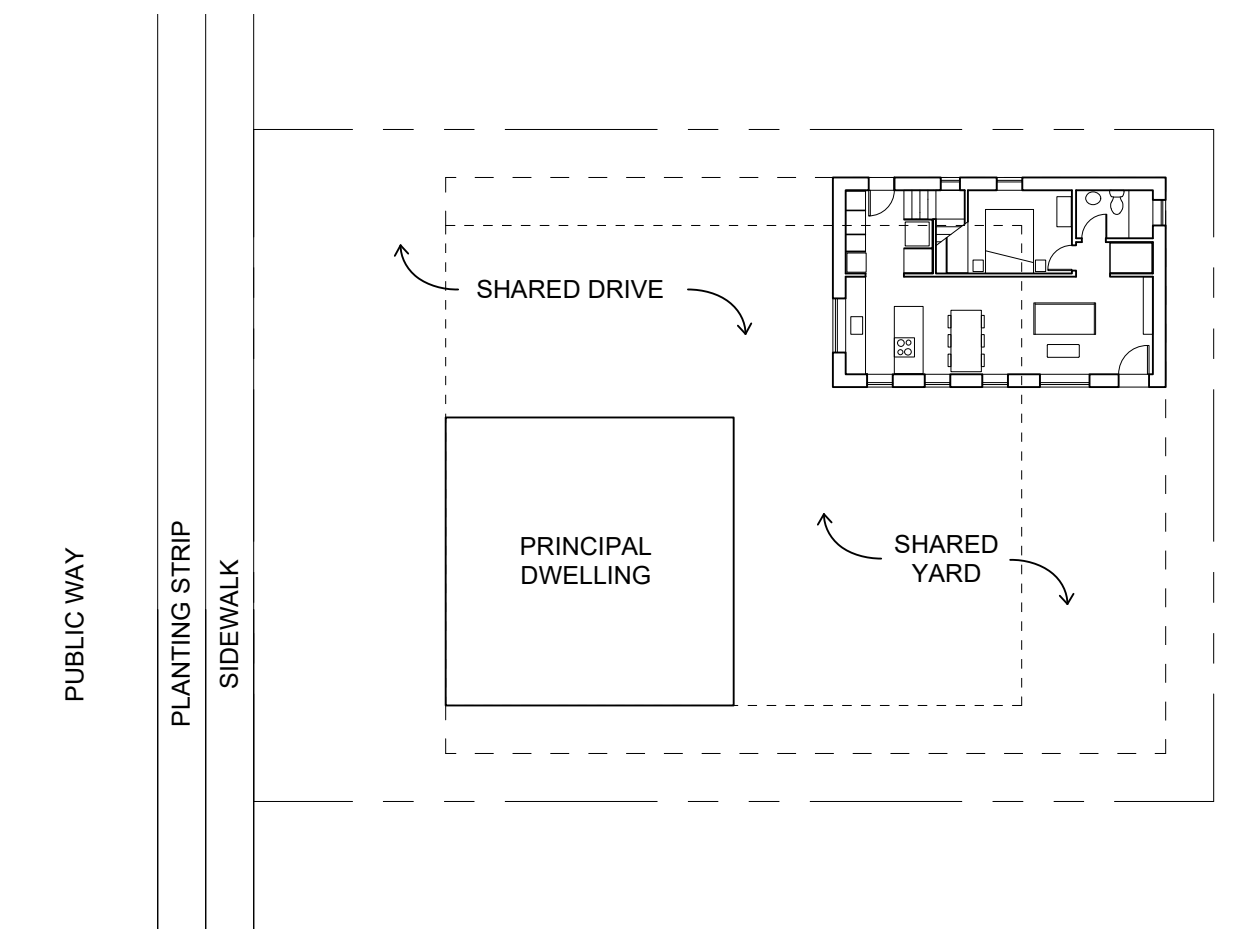
VIEW OF WEST ELEVATION FROM SHARED DRIVE



LEVEL 2 FLOOR PLAN



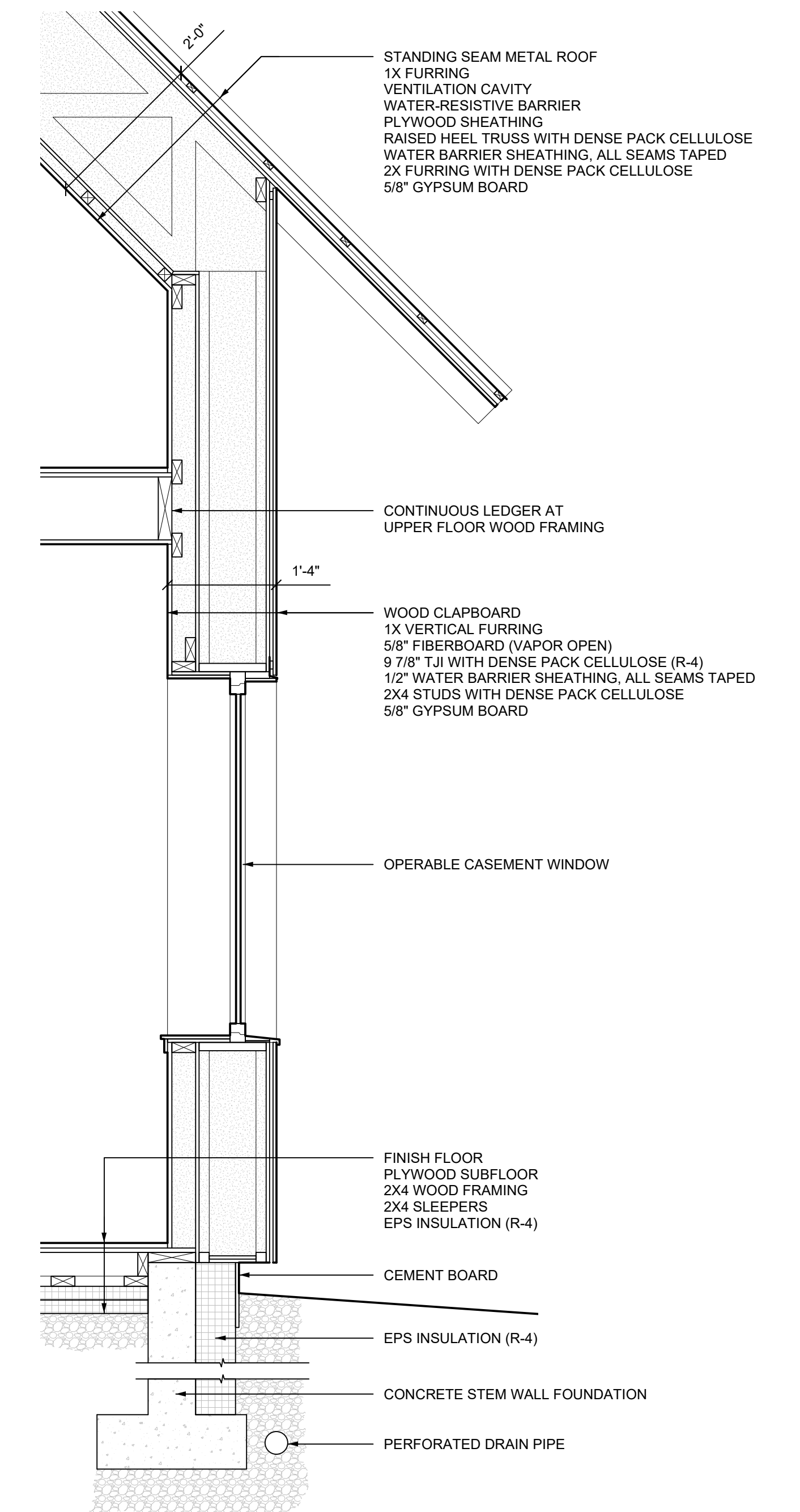
LEVEL 1 FLOOR PLAN



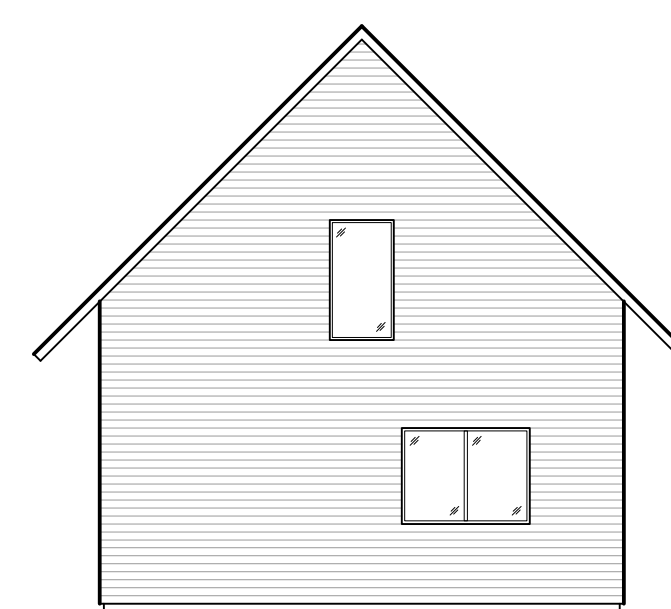
SITE PLAN



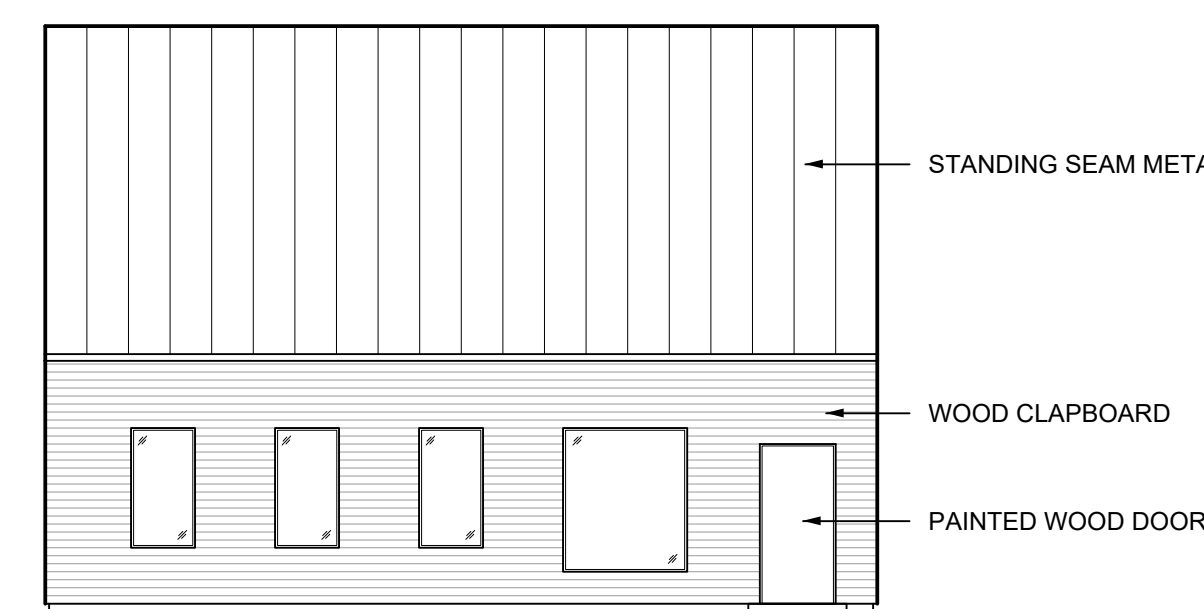
VIEW OF SOUTH ELEVATION FROM SHARED YARD



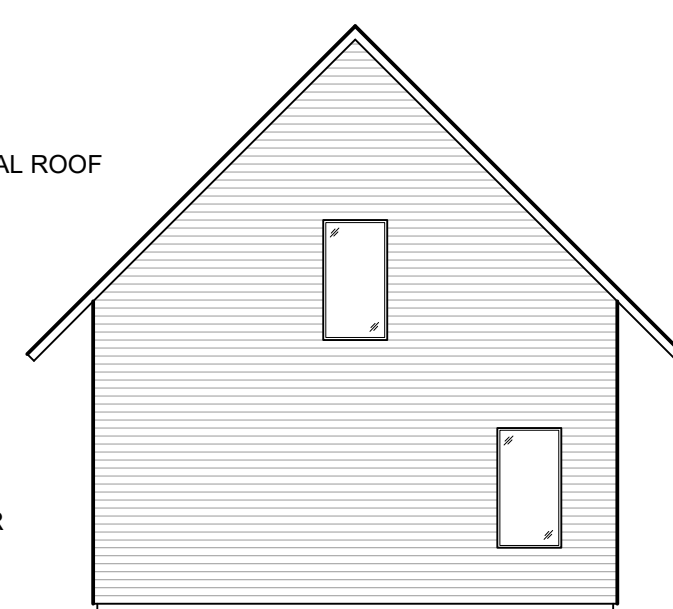
WALL SECTION



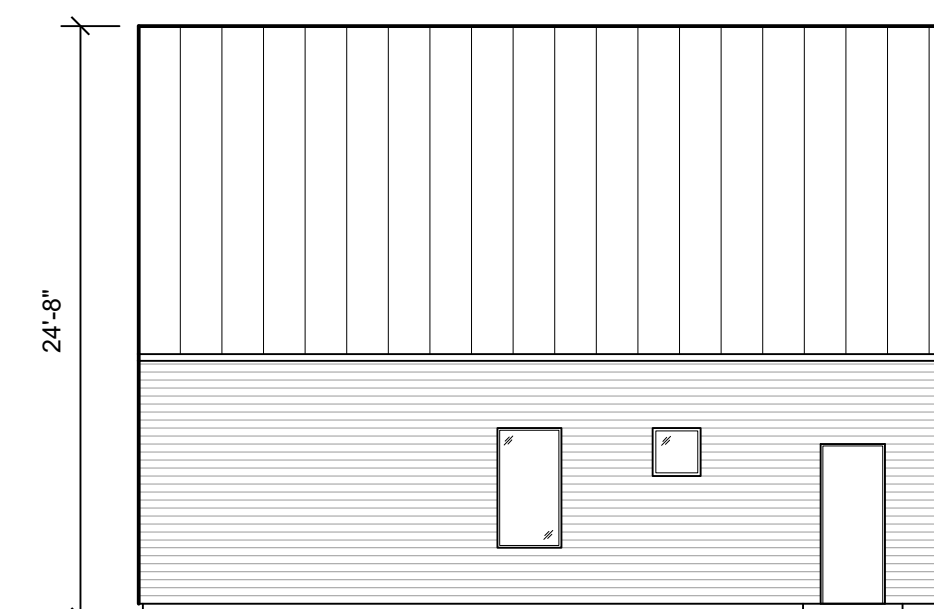
WEST ELEVATION



SOUTH ELEVATION



EAST ELEVATION

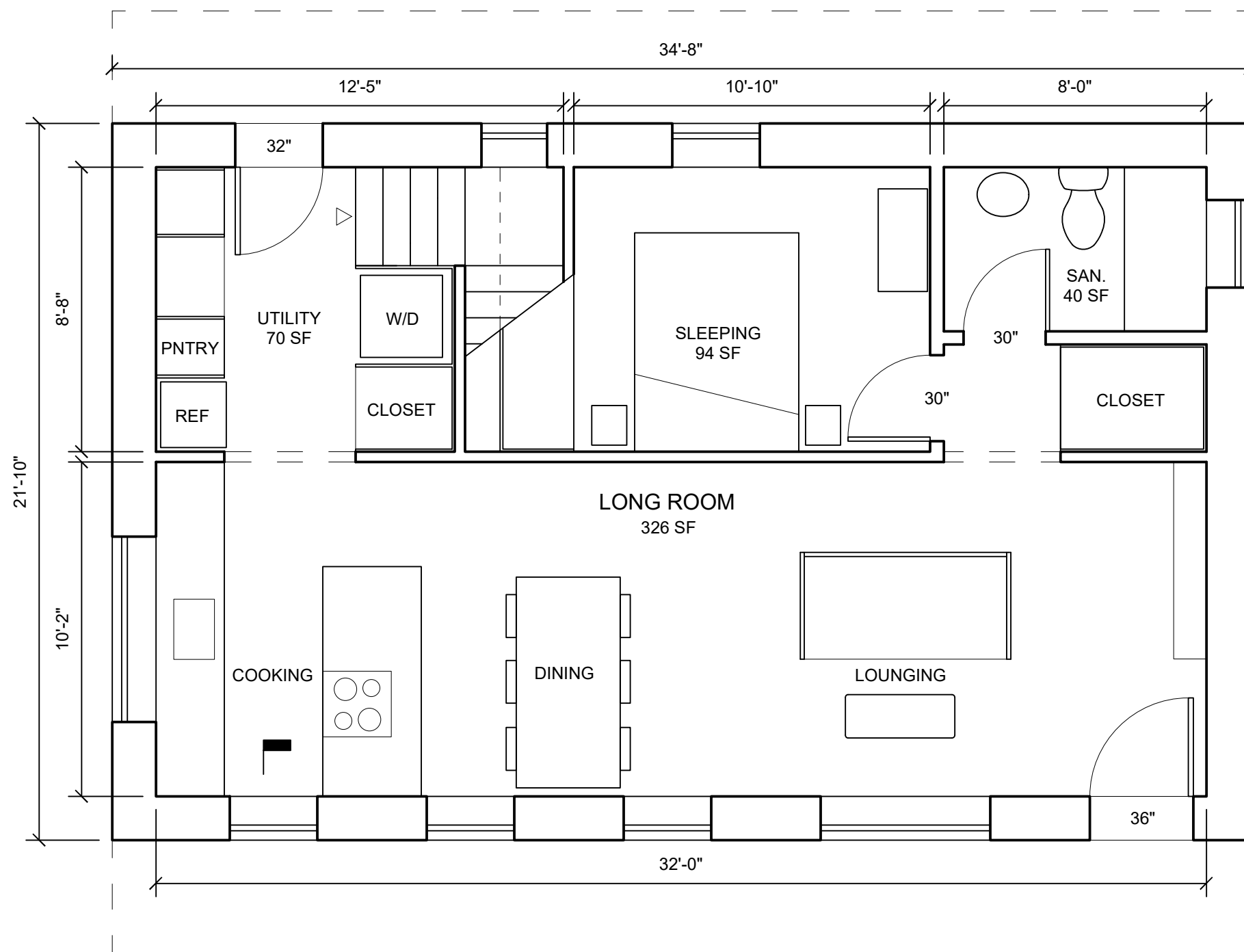


NORTH ELEVATION

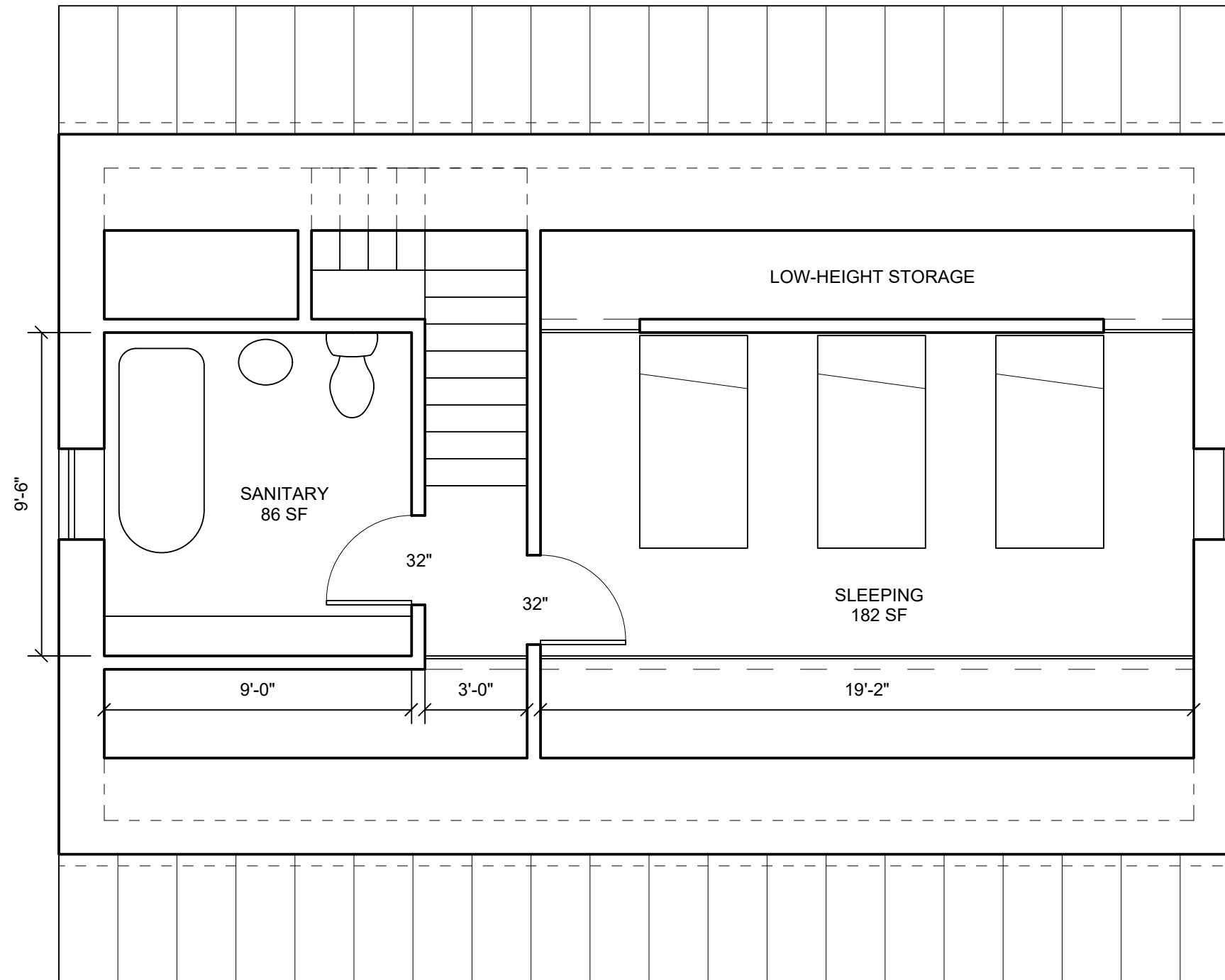
# SMALL HOUSE WITH A LONG ROOM



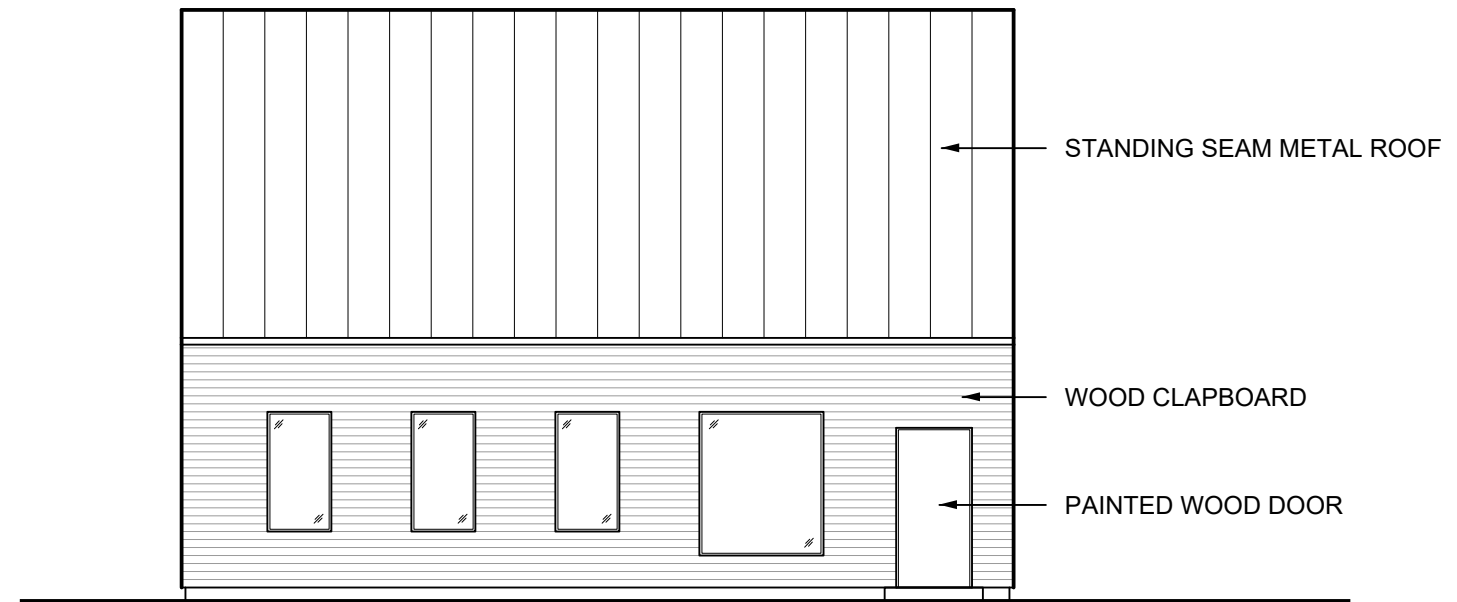
INTERIOR VIEW OF LONG ROOM LOOKING WEST



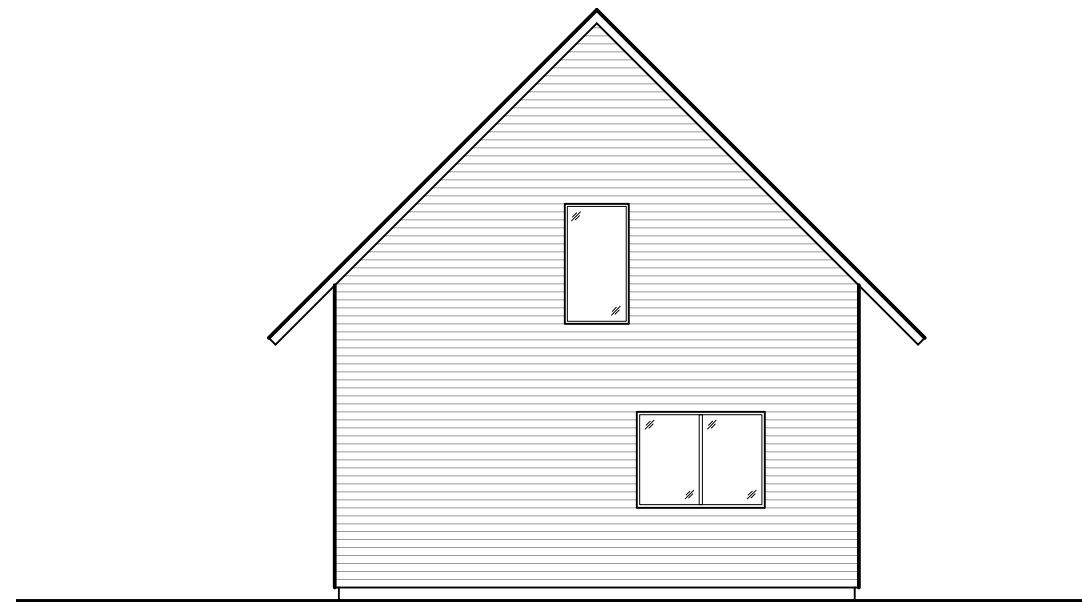
LEVEL 1 FLOOR PLAN



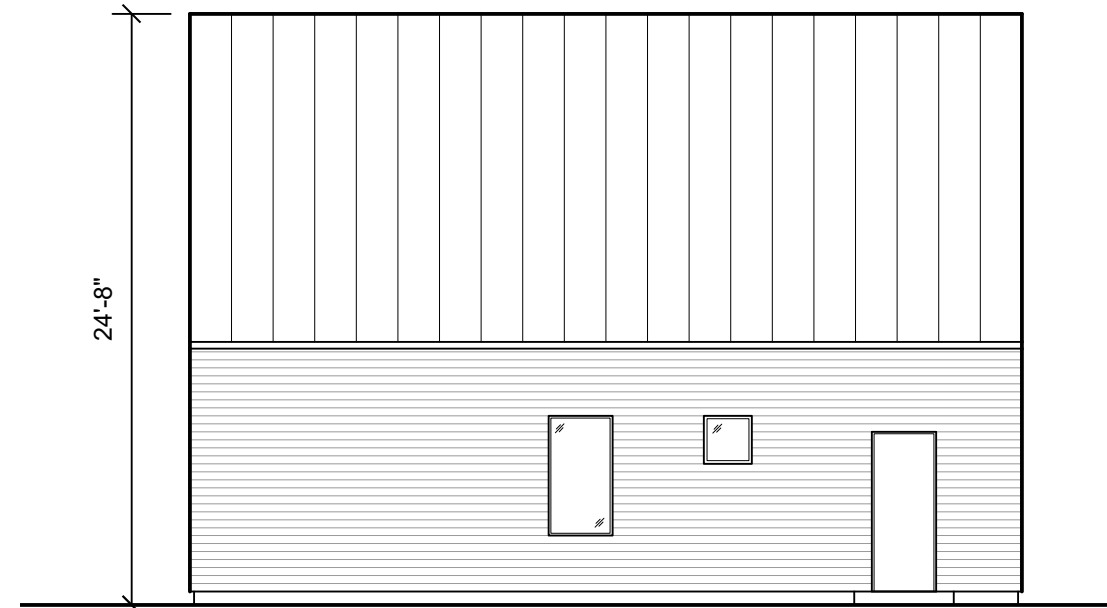
LEVEL 2 FLOOR PLAN



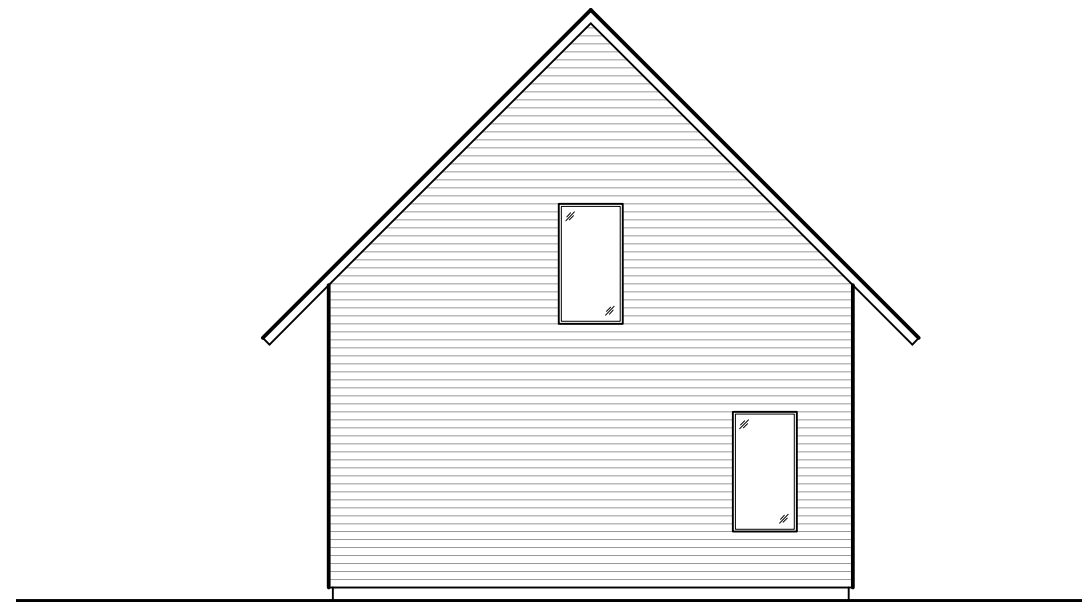
SOUTH ELEVATION



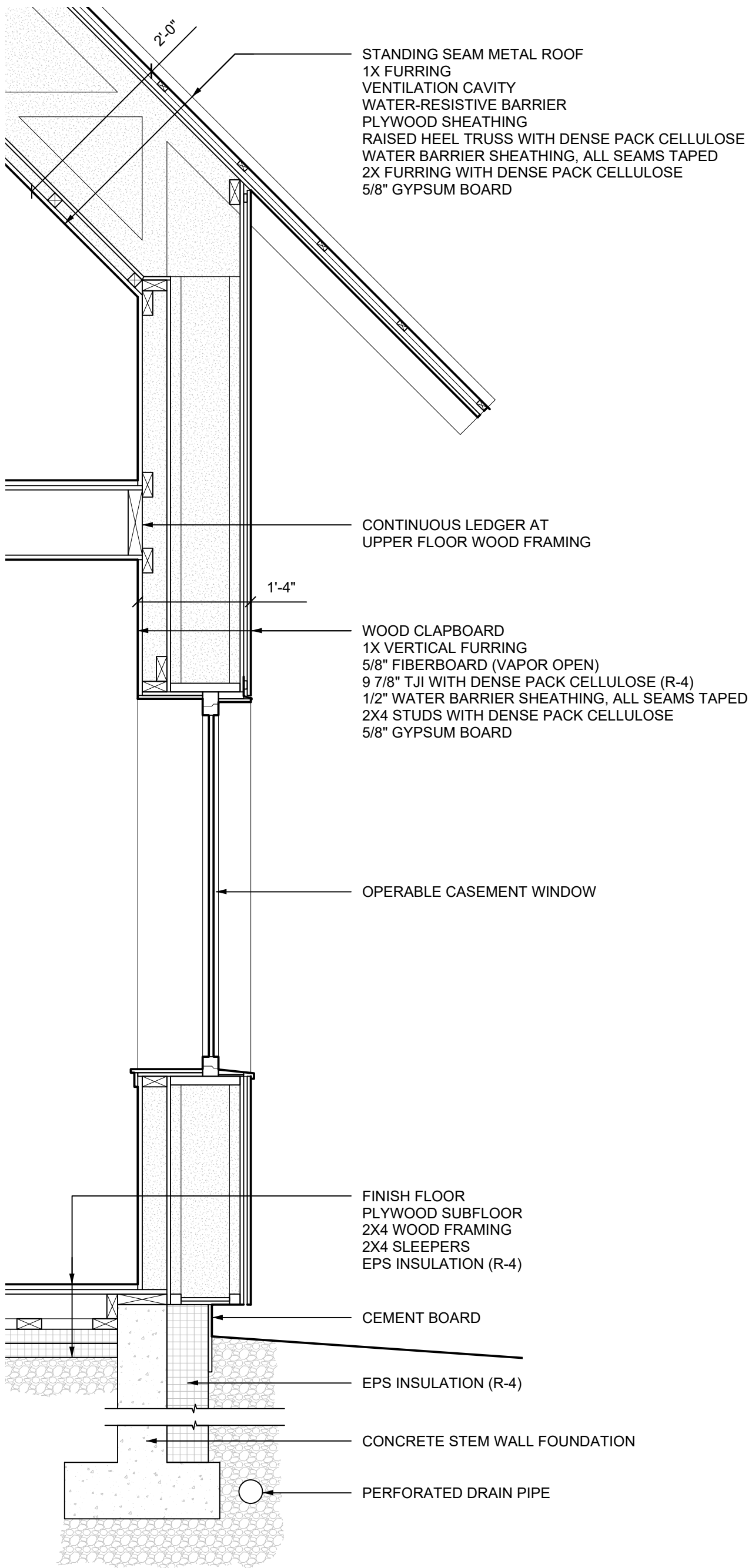
WEST ELEVATION



NORTH ELEVATION



EAST ELEVATION



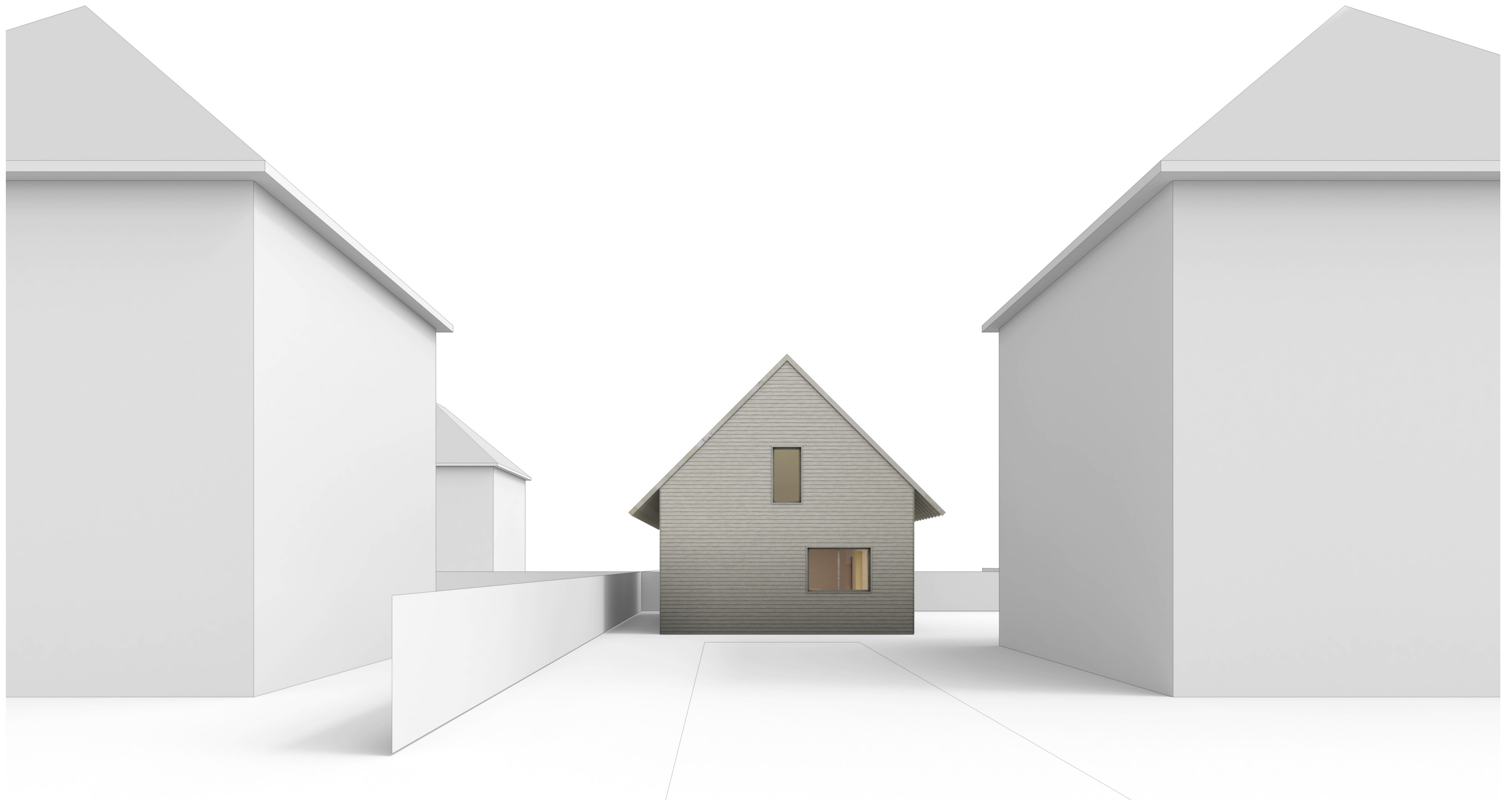
WALL SECTION



SMALL HOUSE WITH A LONG ROOM



**SMALL HOUSE WITH A LONG ROOM**



**SMALL HOUSE WITH A LONG ROOM**