

“The Mill” -- 1895

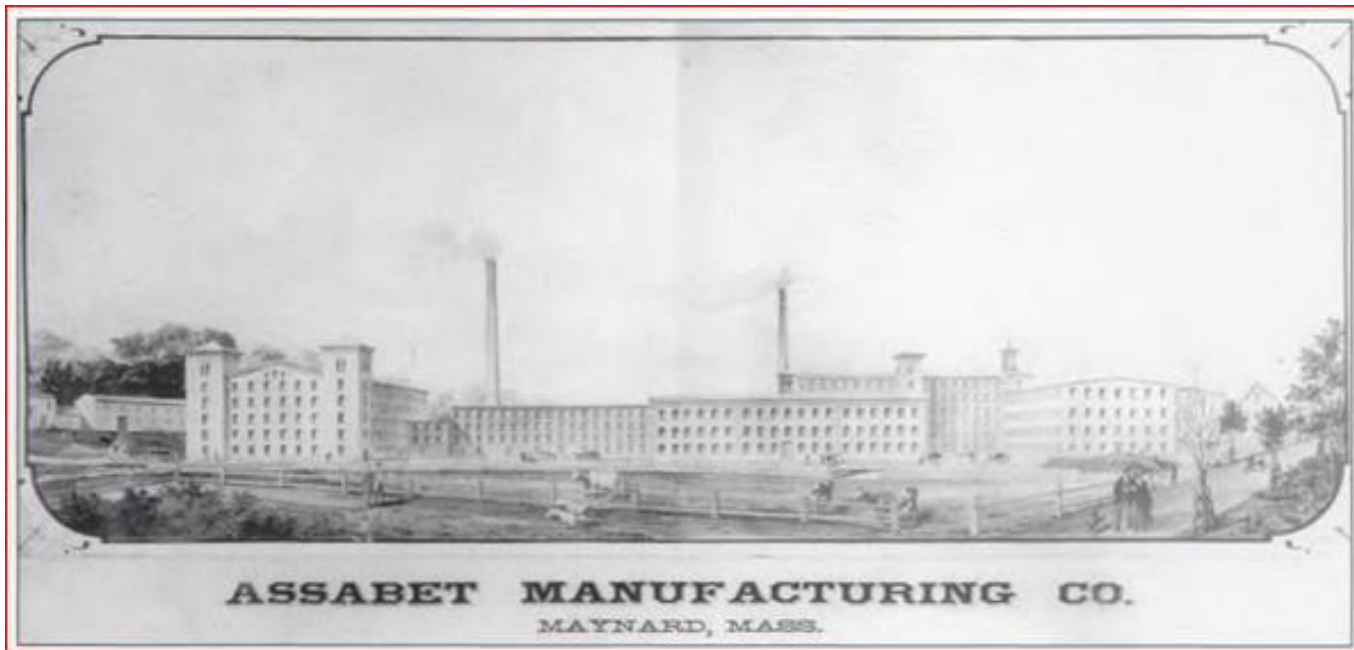


Photo courtesy of Paul Boothroyd

Ken Olsen and DEC



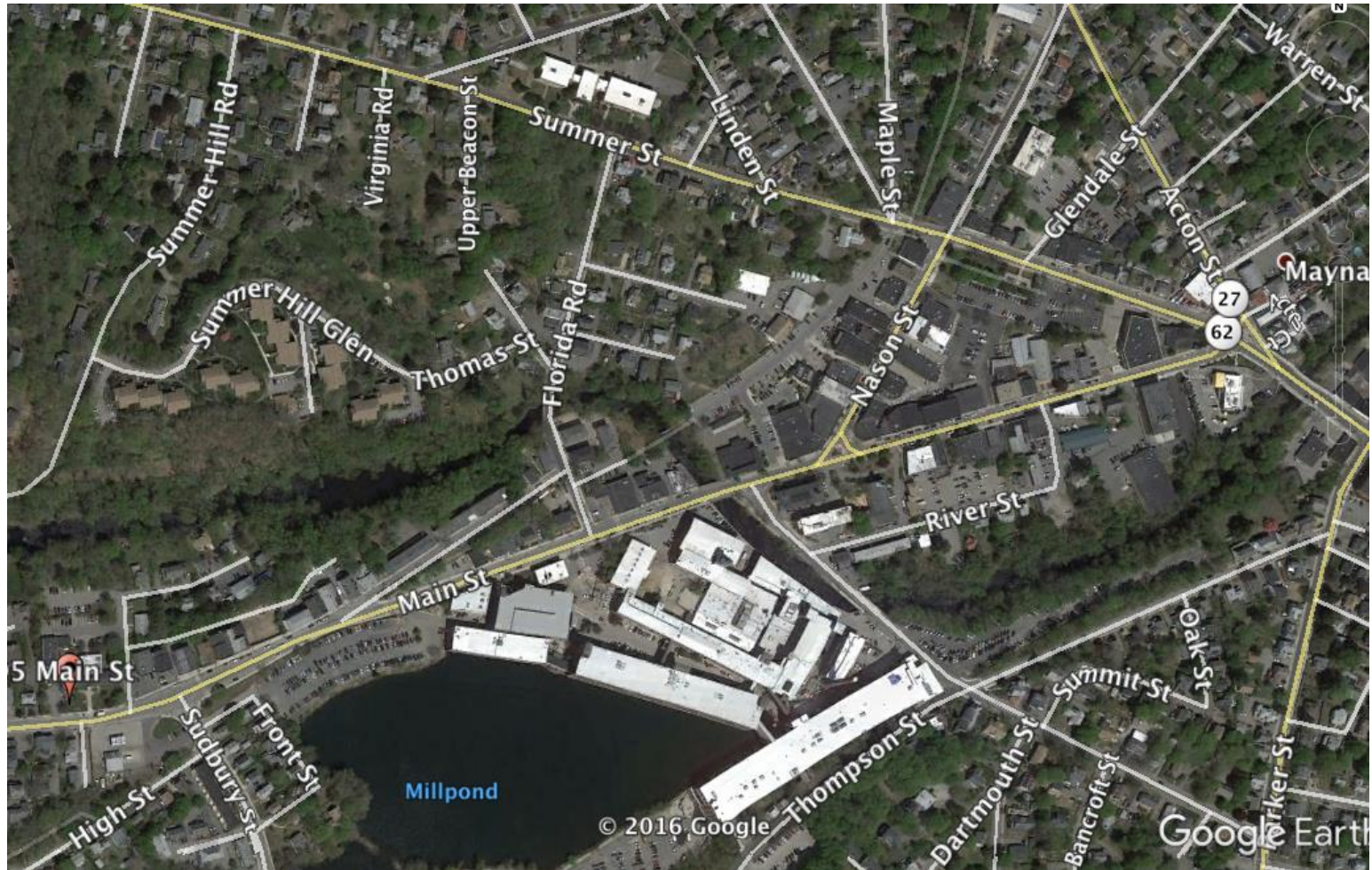
The Clocktower



“The Mill” -- 2015



Downtown Maynard



2014 Fine Point Associates Downtown Study Recommendations



2014 Fine Point Associates Downtown Study Recommendations

- ☐ Develop the Cultural District
- ☐ Create river access
- ☐ Promote the FATP



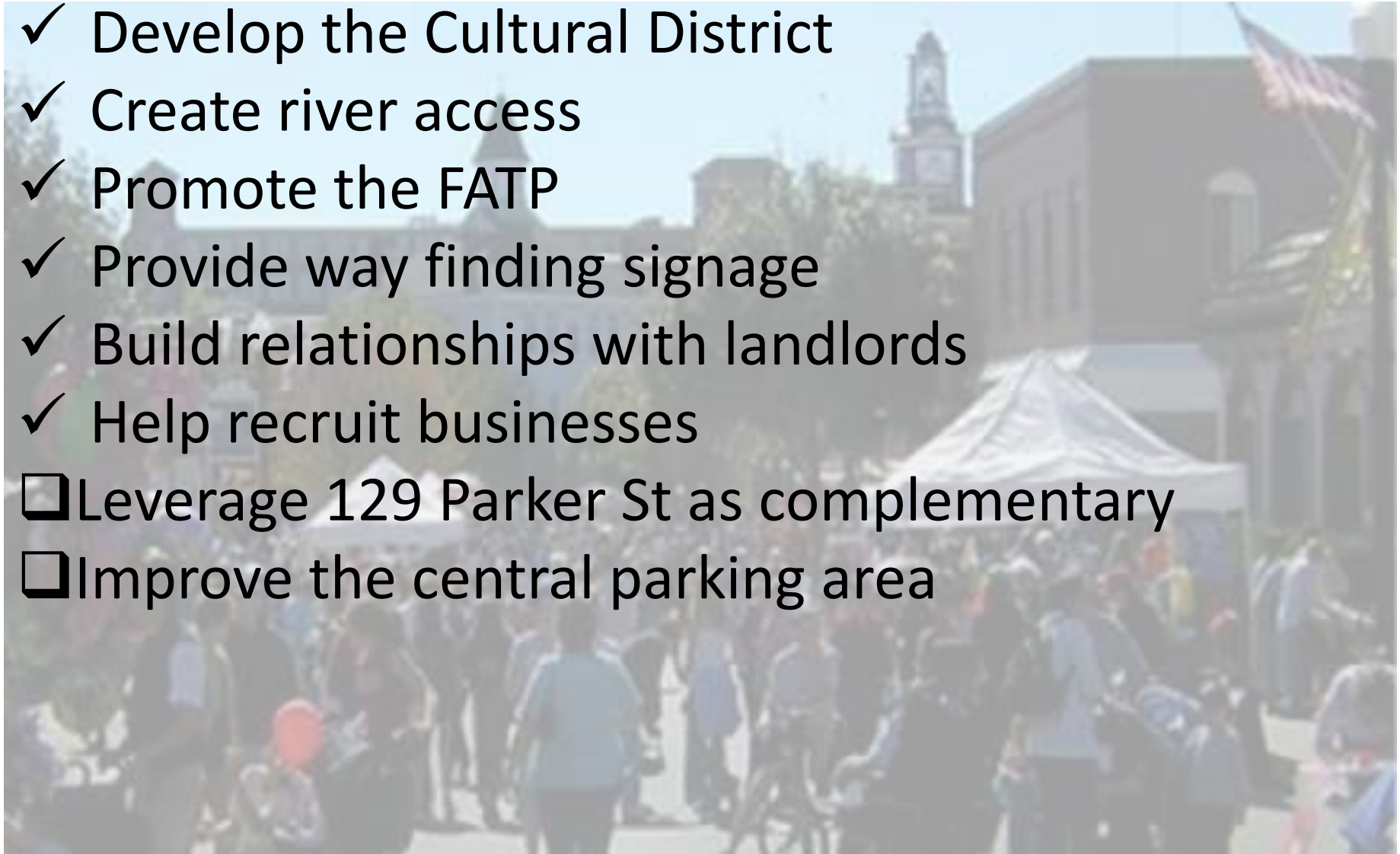
2014 Fine Point Associates Downtown Study Recommendations

- ✓ Develop the Cultural District
- ✓ Create river access
- ✓ Promote the FATP
- ☐ Provide way finding signage
- ☐ Build relationships with landlords
- ☐ Help recruit businesses



2014 Fine Point Associates Downtown Study Recommendations

- ✓ Develop the Cultural District
- ✓ Create river access
- ✓ Promote the FATP
- ✓ Provide way finding signage
- ✓ Build relationships with landlords
- ✓ Help recruit businesses
- ☐ Leverage 129 Parker St as complementary
- ☐ Improve the central parking area



mill&main

- **Connect Maynard and the Mill – from Main Street to Sudbury lot**
- **Create open spaces with retail and generous landscaping**
- **Introduce a contemporary, industrial design to all new elements**
- **Clarify wayfinding and building identification**
- **Simplify access and accessibility**
- **Upgrade the “public realm” – landscaping, lighting & hardscape**





RIVER'S EDGE





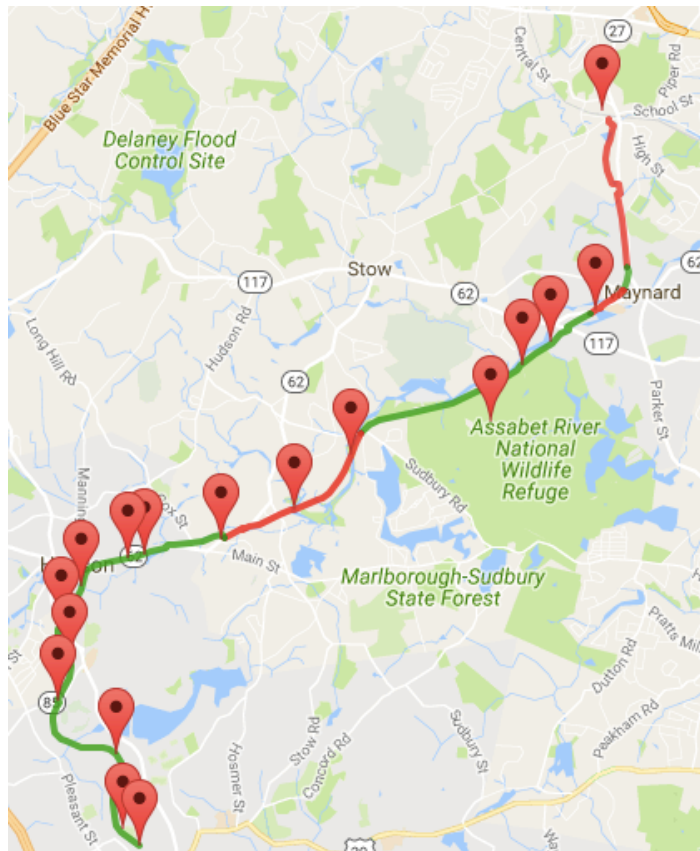
VIEW OF GATEWAY PLAZA FROM MAIN ST

21st Century Maynard

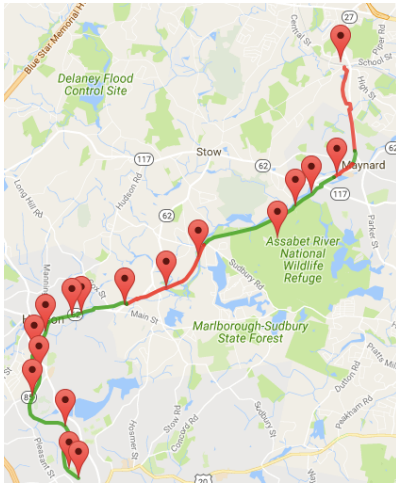


21st Century Maynard

Assabet River Rail Trail



21st Century Maynard



Assabet River Rail Trail



21st Century Maynard





- 
- **Complete Streets**
 - **Cultural District**
 - **Rail Trail**
 - **Tree City USA**
 - **Business Investment**
 - **Celebrate the River**
 - **Mixed-Use Development**
 - **Regional Transportation**
 - **Green Communities**
 - **Leverage**
 - **Community for a Lifetime**
 - **Maynard Advantage**
 - **Destination**
 - **Walkability**
 - **Sustainable**