



# *Sales Tax Analysis of the 495/MetroWest Region*

Prepared by:

The Public Policy Center at UMass Dartmouth

Presented by:

Dr. Michael Goodman, Executive Director

The Public Policy Center at UMass Dartmouth

Authors:

David Borges, Michael Goodman, and Elise Korejwa

June 19, 2017

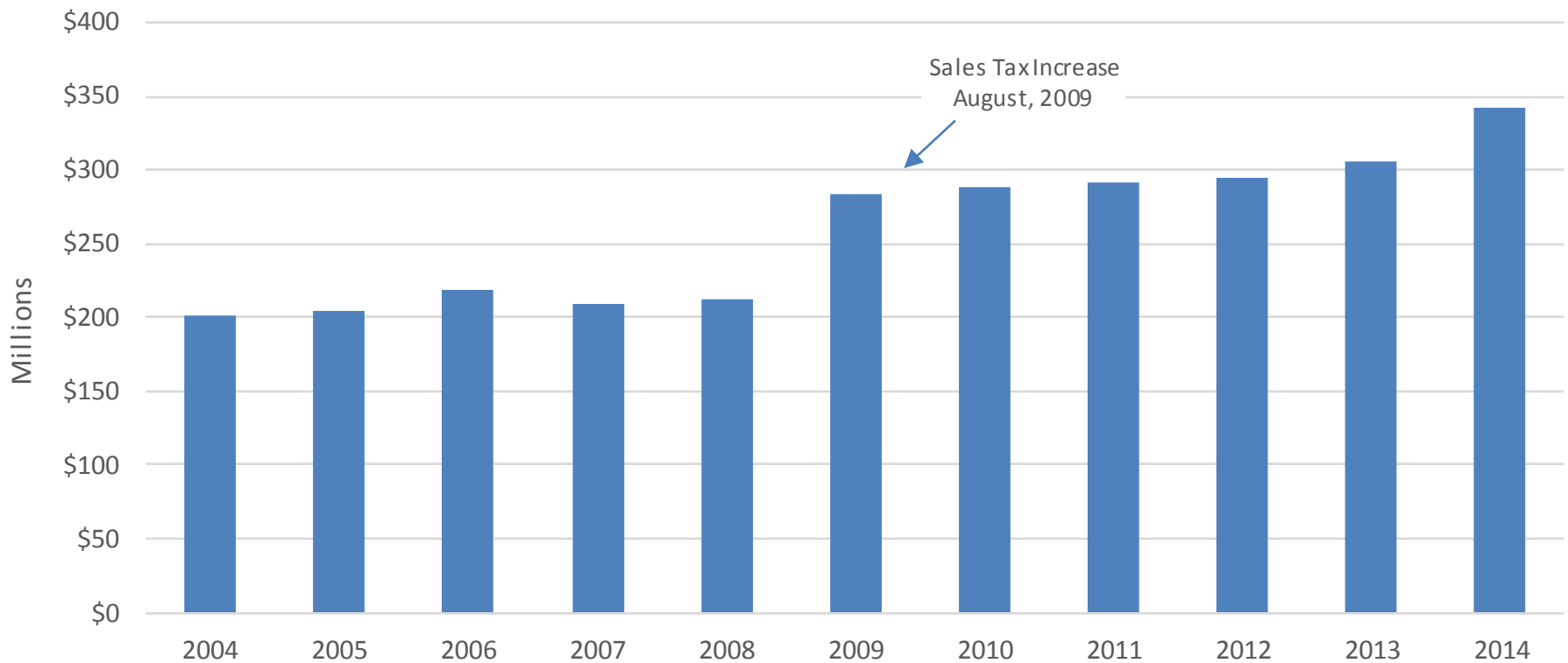


## *About the Data*

- Data should not be considered to represent actual sales that take place in any given locality.
- Businesses that operate in more than one location in Massachusetts generally file a single sales tax return covering sales at all of the locations in the state. These sales would all be attributed to the address listed on the return or registration.
- Similarly, sales from stores that are part of a chain may be filed together under the address of the corporate headquarters. If this address is out-of-state, then sales from this chain might not appear in any of the local tallies.
- Furthermore, a business can have its return filed by a third party, such as an accountant, and list the address of this party on its return. In this case, our data may show the sales in the city or town in which the accountant's office is located.



## Annual Sales Tax Collections, 2004 to 2014 495 MetroWest Region (Sales Tax & Inflation Adjusted)



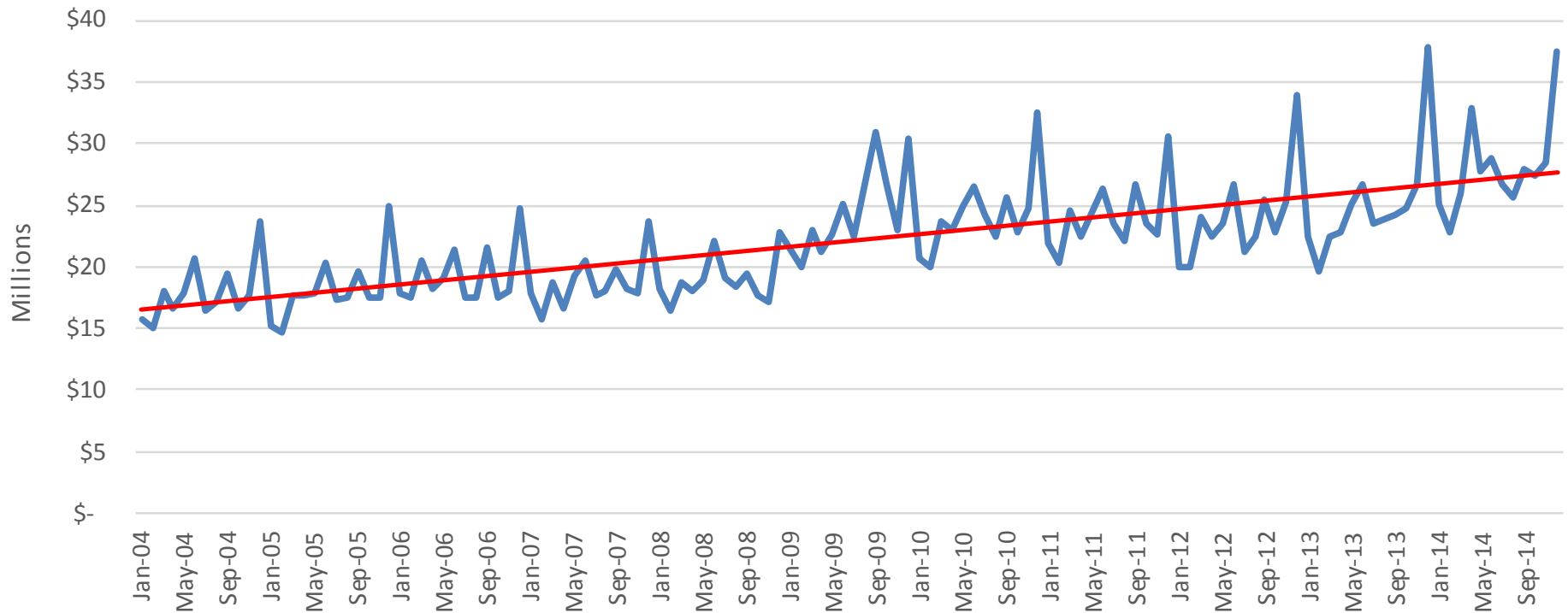
Note: Sales tax increased from 5.0% to 6.25% in August, 2009



# Monthly Sales Tax Collections, 2004 to 2014

## 495 MetroWest Region

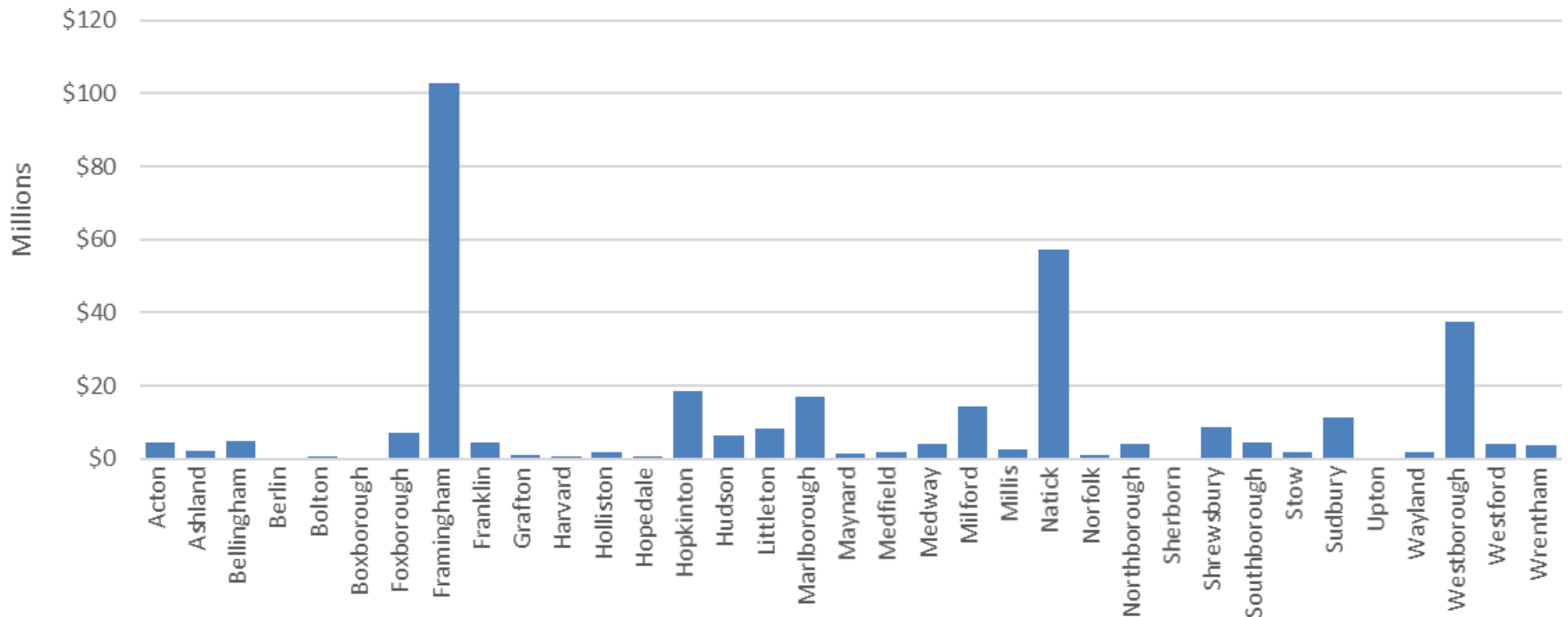
(Sales Tax & Inflation Adjusted)



Note: Sales tax increased from 5.0% to 6.25% in August, 2009

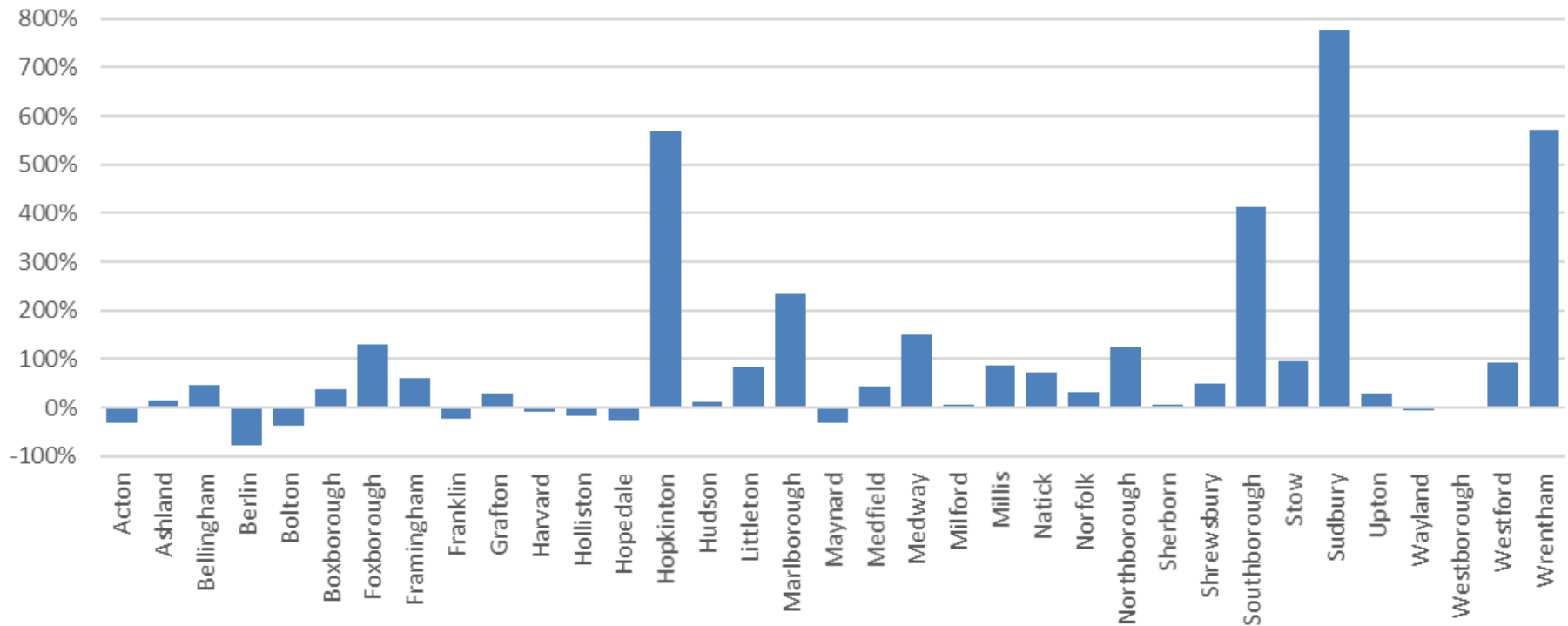


## Annual Sales Tax Collections, 2014 495 MetroWest Region (Inflation Adjusted)





## Percent Change in Sales Tax Collected, 2004 to 2014 495 MetroWest Region (Sales Tax & Inflation Adjusted)





## Percent of State Total Sales Tax Collected, 2004 to 2014

### 495 MetroWest Region (Sales Tax & Inflation Adjusted)

