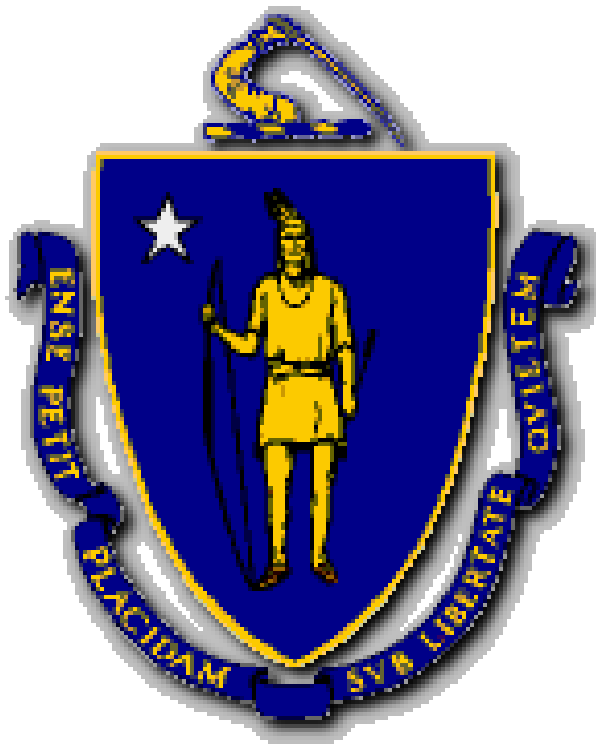


Quarterly Report on the Status of Prison Overcrowding, Fourth Quarter 2011

Massachusetts Department of Correction
Submitted in Compliance with Chapter 799
Section 21 of the Acts of 1985



Deval L. Patrick

Governor

Timothy P. Murray

Lieutenant Governor

Mary Elizabeth Heffernan

*Secretary of Executive Office
of Public Safety and Security*

Luis S. Spencer

Commissioner

January 2012

2011 Fourth Quarter Report

Section Twenty-one of Chapter 799 of the Acts of 1985 directs the Commissioner of Correction to report quarterly on the status of overcrowding in state and county facilities. This statute calls for the following information:

Such report shall include, by facility, the average daily census for the period of the report and the actual census on the first and last days of the report period. Said report shall also contain such information for the previous twelve months and a comparison to the rated capacity of such facility.

This report presents the required statistics for the fourth quarter of 2011.

Publication No. 12-65-DOC-01 14 pgs.
Approved by: Ellen Bickelman, State Purchasing Agent

This report, prepared by Gina Papagiorgakis of the Research and Planning Division, is based on counts submitted by Massachusetts Sheriffs and the DOC.

2011 Fourth Quarter Report

Table of Contents

	Technical Notes/Definitions	iii
	Abbreviations	vi
Table 1.	Fourth Quarter 2011 Population in Department of Correction Facilities, October 31, 2011 to December 31, 2011	1
Figure 1.	Department of Correction Custody Population, Fourth Quarter 2011 Overcrowding Statistics	2
Table 2.	Previous Twelve Months Population in Department of Correction Facilities, October 31, 2010 to September 30, 2011	3
Table 3.	Fourth Quarter 2011 Population in County Correctional Facilities by County, October 3, 2011 to December 27, 2011	4
Table 4.	Fourth Quarter 2011 Population in County Correctional Facilities by Facility, October 3, 2011 to December 27, 2011	4
Figure 2.	MA County Correctional Facilities by County, Fourth Quarter 2011, Population Change	5
Table 5.	Previous Twelve Months Population in County Correctional Facilities by County, October 25, 2010 to September 26, 2011	6
Table 6.	Previous Twelve Months Population in County Correctional Facilities by Facility, October 25, 2010 to September 26, 2011	6
Figure 3.	DOC Custody Population Change, Fourth Quarters of 2010 and 2011	7
Figure 4.	County Correctional Population Change, Fourth Quarters of 2010 and 2011	7
Table 7.	Criminally Sentenced DOC New Court Commitments by Gender, 2010 and 2011	8
Figure 5.	Criminally Sentenced DOC New Court Commitments by Gender, Fourth Quarters 2010 and 2011	8

Technical Notes, 2000 to 2003¹

- The official capacity or custody level designation for each facility can change for a number of reasons, e.g. expansion of facility beds, decrease of facility beds due to fire, or changes in contracts with vendors. In all tables the capacity and custody level reflects the status at the end of the reporting period. The design capacity is reported for correctional facilities in Tables 1 through 6.
- State inmates housed in the Hampshire County contract program are included in the county population tables, as are all other state inmates housed in county facilities.
- On May 18, 2000, the Braintree Alternative Center was closed for renovations by the Norfolk County Sheriff's Office. All inmates were transferred to the minimum security Pre-Release Center in Dedham.
- As of September 15, 2000, Longwood Treatment Center, male population, was moved to the Massachusetts Boot Camp and the women were transferred to facilities housing female populations.
- As of September 22, 2000, Massachusetts Boot Camp ceased to hold medium security inmates.
- Due to DOC policy modification, the security level of Boston State Pre-Release was changed from Security Level 2 to Security Level 3/2 during the fourth quarter of 2001.
- P.P.R.E.P was closed effective July 6, 2001.
- Charlotte House was closed effective November 9, 2001.
- Effective November 16, 2001, NCCI-Gardner added 30 beds to Security Level 3, per policy 101.
- As of April 5, 2002, Norfolk County no longer has any contract beds, all inmates are now held at the Norfolk County House of Correction.
- May 20, 2002, NECC changed from a Security Level 3 to Level 3/2. The design capacity for Security Level 3 is 62, and for Security Level 2 the design capacity is 88.
- May 20, 2002, Pondville changed from a Security Level 3 to Level 3/2 with a design capacity of 100.
- June 10, 2002, South Middlesex Correctional Center changed to a facility for female offenders.
- June 22, 2002, Old Colony Correctional Center added a Level 3 housing unit. The design capacity for Security Level 5 is 480 and for Security Level 3 the design capacity is 100.
- On June 30, 2002, the following facilities were closed; SECC (Medium), Hodder House @ Framingham, MCI-Lancaster, the Massachusetts Boot Camp, and the Addiction Center @ SECC
- As of July 1, 2002, the Massachusetts Boot Camp was renamed the Massachusetts Alcohol and Substance Abuse Center (MASAC). Within MASAC is the Longwood Treatment Center Program, relocated on September 15, 2000. This program served individuals incarcerated for operating under the influence of alcohol. Because the inmates were predominantly county sentenced inmates, the inmate count and bed capacity were also included in Tables 3 and 4.
- The Massachusetts Treatment Center (MTC) houses both civil and criminal populations.
- As of July 1, 2002, two housing units remain open at MCI-Shirley Minimum with a design capacity of 92.
- In August 2002, the David R. Nelson Correctional Addiction Center (DRNCAC) was closed and all inmates were integrated into Bristol Dartmouth House of Correction.
- Within MASAC, The Longwood Treatment Center Program was terminated on July 1, 2003. The last inmate to leave the facility was on September 8, 2003.
- Prior to the 3rd Quarter 2003, NCCI-Gardner (Minimum) was inadvertently shown as Security Level 3/2 instead of Security Level 3.

¹ For Technical notes prior to 2000, please refer to previous quarterly reports. Refer to abbreviations on page vi.

Technical Notes 2004 to Present

- Effective February 5, 2004, Boston State Pre-Release Center had a change in design capacity. The new capacity is 150. One hundred beds are Pre-Release and 50 beds are Minimum.
- Houston House program will be known as Women and Children's Program (WCP), effective July 12, 2004.
- Within MCI-Shirley is a 13 bed unit called the Assisted Daily Living Unit, this unit opened on February 22, 2005. The unit houses inmates who require assistance with activities of daily living (e.g., hygiene, eating, ambulating, etc.), but whose regular medical needs are treated on an outpatient basis.
- On September 12, 2005 OCCC designated a Special Housing Unit (SHU) to hold Security Level 4 inmates.
- Barnstable County House of Correction design capacity has changed. The new design capacity is 300, effective as of March 13, 2006.
- The Lemuel Shattuck Correctional (LEM) unit census was added to the first quarter 2006 report.
- Effective October 19, 2006 the count sheet was changed to reflect the Institution Security Level changes per the CMR 103 DOC 101 Policy.
- Memorandum of Agreement for 380 beds at Plymouth County Correctional Facility including, 52A's, Non-52A's, DYS, and other county.
- September 24, 2007 - To reflect recent information that has come to light, Bristol County Dartmouth and Essex County Middleton facilities each include a pre-release women's facility which will be reported separately in future reports.
- On October 1, 2007 the Western MA Regional Women's Correctional Center opened in Chicopee MA (Hampden County). The design capacity is 228.
- The design capacity for Shirley Minimum has changed due to the reopening of additional housing units:
Effective October 15, 2007 - 92 to 165
Effective February 27, 2008 - 165 to 161, due to the reassessment of space
Effective June 19, 2008 - 161 to 193
Effective November 5, 2008 - 193 to 249.
Effective May 6, 2010 - a new modular unit at Shirley Minimum opened with a rated capacity of 50, changing design/rated capacity from 249 to 299.
- On June 13, 2008 South Middlesex Correctional Center began housing awaiting trial inmates.
- On January 13, 2009, the DOC began the process of double-bunking inmates in some cells at SBCC, with two inmates instead of the previous one inmate per cell.
- Effective February 2, 2009 the DOC added 20 "Community Beds" at Brooke House, contracted with Community Resources for Justice.
- In February 2009, the Assisted Daily Living Unit at MCI-Norfolk opened. The unit houses inmates who require assistance with activities of daily living (e.g., hygiene, eating, ambulating, etc.), but whose regular medical needs are treated on an outpatient basis.
- The data now identifies that the DOC is reporting design/rated capacity. The MGL statute requires that the DOC report on rated capacity. While there is no numerical difference between design capacity and rated capacity, the DOC wanted to make sure the data is accurately and appropriately labeled.
- Effective April 13, 2009, the security level for the MASAC facility has changed from a Medium to Minimum security. In addition to continuing to house 30-day substance abuse civil commitments under MGL Ch.123 s.35, the facility will house inmates serving criminal sentences.

- On June 1, 2009 MCI-Cedar Junction @ Walpole became the reception center, designating one unit as medium security. This unit was designed to hold 72 inmates. All other units remain at maximum security.
- On August 13, 2010 the design capacity for the Hampden County women's facility was reviewed for discrepancies. The design capacity has been changed for accuracy from 228 to 189. The operational capacity for this facility is 240.
- Due to overcrowding, MCI-Cedar Junction began double-bunking maximum security housing units 2 and 3 on March 17, 2011, and the Orientation Unit on March 29, 2011.
- Average Daily Population for the previous year was calculated by using the last Monday of each month.
- The ATU (Awaiting Trial Unit) house both pre-trial and civilly committed females. The facility population count provided includes all pre-trial and civil females, some of whom might be housed elsewhere within MCI-Framingham then the actual ATU.
- Average Daily Population for county facilities was calculated by using the last week of every month (based on the day of the week in which it was provided).

Definitions

Custody Population: Custody population refers to all offenders held in DOC facilities only, and does not include DOC inmates serving time in correctional facilities outside of the DOC (e.g., Massachusetts county Houses of Correction, other states' correctional facilities, and the Federal Bureau of Prisons).

Jurisdiction Population: Jurisdiction population refers to all offenders incarcerated in DOC facilities as well as DOC inmates serving time in correctional facilities outside of the DOC (e.g., Massachusetts county Houses of Correction, other states' correctional facilities, and the Federal Bureau of Prisons).

Design/Rated Capacity: The number of inmates that planners or architects intended for the institution [as defined by the U.S. Department of Justice, Bureau of Justice Statistics (BJS)]. Rated capacity is the number of beds or inmates assigned by a rating official to institutions within the jurisdiction, essentially formally updated from the original design capacity.

In November 2009, new security level designations were established according to **103 DOC 101 Correctional Institutions/Security Levels** policy which states:

Security Levels:

- **Pre-Release/Contracted Residential Placement** – The perimeter is marked by non-secure boundaries. Physical barriers to inmate movement and interaction are either non-secure or non-existent. Inmate movements and interactions are controlled by rules and regulations only. Inmates may leave the institution daily for work and/or education in the community. Supervision while on the grounds of the facility is intermittent. While in the community, supervision is occasional, although indirect supervision (e.g. contact with employer) may be more frequent. Inmates must be within eighteen (18) months of parole eligibility or release and not barred by sentencing restrictions for either placement in a pre release facility or participation in work, education or program related activities (PRA) release programs.

- **Minimum** - The perimeter is marked by non-secure boundaries. Physical barriers to movement and interaction are either non-secure or non-existent. Inmates may be housed in single, double or multiple occupancy areas. Inmate movements and interactions are controlled by rules and regulations only. Supervision is intermittent. Inmates may leave the perimeter under supervision. Contact visits and personal clothing are allowed.

- **Medium** - The perimeter and physical barriers to control inmate movement and interaction are present. Inmates may be housed in single, double or multiple occupancy areas. Inmate movement and interaction are generally controlled by rules and regulations, as well as with physical barriers. Inmates are subject to direct supervision by staff. Work and program opportunities are available. Contact visits and personal clothing may be allowed. Inmates assigned to medium custody designation at MCI-Cedar Junction will receive contact visits.

- **Maximum** – The perimeter is designed and staffed to prevent escapes and the introduction of contraband. Inmate movement and interaction are controlled by physical barriers. Inmates are housed in single and double cells. The design of the facility offers an ability to house some offenders separate from others without a limitation of work and/or program opportunities. Inmates are subject to direct supervision by staff. Contact visits may be allowed at Souza Baranowski. Personal clothing is generally not allowed. MCI-Cedar Junction reception beds are considered maximum security and inmates residing in reception beds will receive non-contact visits.

Abbreviations

AC	Addiction Center	NECC	Northeastern Correctional Center
ADP	Average Daily Population	NCCI	North Central Correctional Institution at Gardner
ATU	Awaiting Trial Unit	OCCC	Old Colony Correctional Center
BSH	Bridgewater State Hospital	OUI	Operating Under the Influence
CRS	Contract Residential Services Includes Women and Children's Program	PPREP	Pre-Parole Residential Environmental Phase Program
DDU	Departmental Disciplinary Unit	PRC	Pre-Release Center
DOC	Massachusetts Department of Correction	SBCC	Souza-Baranowski Correctional Center
DSU	Departmental Segregation Unit	SECC	Southeastern Correctional Center
HOC	House Of Correction	SDPTC	Sexually Dangerous Person Treatment Center
LEM	Lemuel Shattuck Correctional Unit	SMCC	South Middlesex Correctional Center
LCAC	Lawrence Correctional Alternative Center		
MASAC	Massachusetts Alcohol and Substance Abuse Center		
MTC	Massachusetts Treatment Center		

Table 1 provides the DOC figures for the fourth quarter of 2011. The DOC Custody population has decreased by 75 inmates, or one percent in this time period. Operating with 11,467 inmates in the system, the average daily population was 11,508 with a design capacity of 8,029. Thus, the DOC operated at 143% of design capacity.

DOC inmates housed in non-DOC Facilities had an average daily population of 265 inmates. The majority of these inmates were in Massachusetts Houses of Correction.

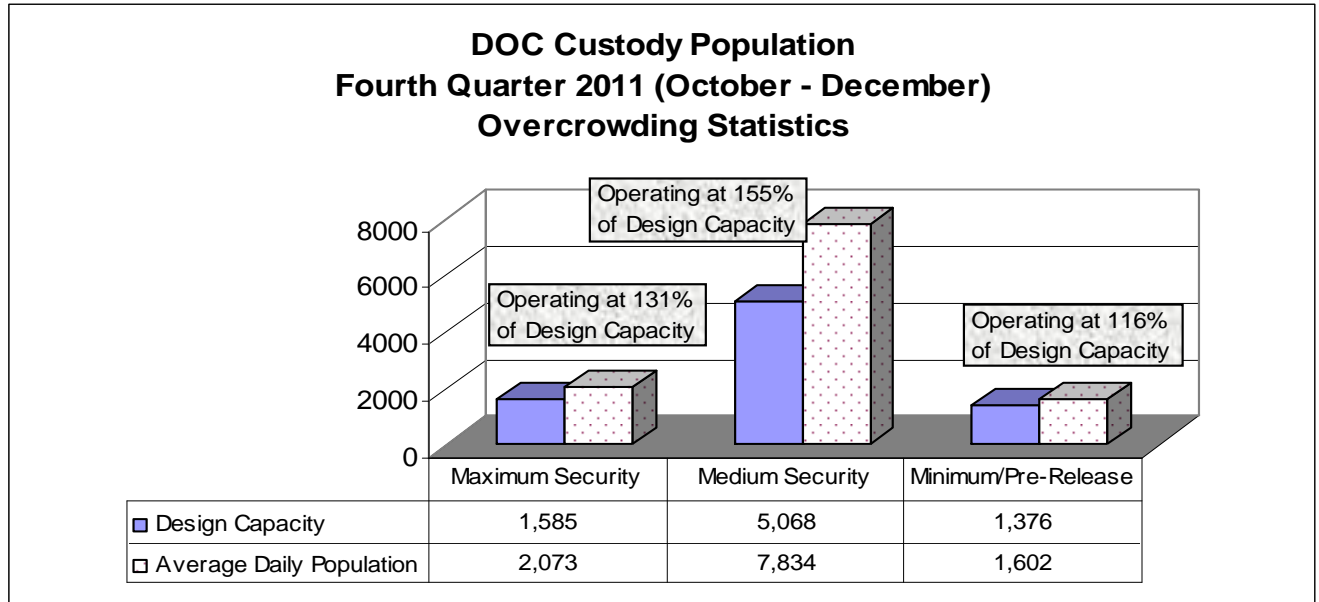
Overall, the average daily total DOC Jurisdiction population for the fourth quarter 2011 was 11,774. There was a decrease of 89 inmates over the quarter from 11,812 to 11,723.

Table 1

Fourth Quarter 2011					
Population in DOC Facilities, October 31, 2011 to December 31, 2011					
Security Level/Facility	Avg. Daily Population	Beginning Population	Ending Population	Design/Rated Capacity	% ADP Capacity
Maximum					
MCI Cedar Junction	761	756	761	561	136%
SBCC	1,312	1,303	1,316	1,024	128%
Sub-Total, Maximum	2,073	2,059	2,077	1,585	131%
Medium					
Bay State Correctional Center	330	331	331	266	124%
Massachusetts Treatment Center	630	633	628	561	112%
MCI Cedar Junction	72	71	72	72	100%
MCI Concord	1,340	1,357	1,324	614	218%
MCI Framingham (Female)	444	464	411	388	114%
MCI Framingham: ATU (Female)	223	229	220	64	348%
MCI Norfolk	1,500	1,502	1,504	1,084	138%
MCI Shirley	1,183	1,189	1,175	720	164%
NCCI Gardner	984	986	989	568	173%
OCCC @ Bridgewater	739	723	775	480	154%
Shattuck Correctional Unit	24	26	17	24	100%
State Hospital @ Bridgewater	366	372	358	227	161%
Sub-Total, Medium	7,834	7,883	7,804	5,068	155%
Minimum					
MA Alcohol and Substance Abuse Center	134	145	122	236	57%
MCI Plymouth	189	188	184	151	125%
MCI Shirley	307	305	311	299	103%
NCCI Gardner	23	21	23	30	77%
OCCC	145	139	146	100	145%
Min/Pre					
Boston Pre-Release Center	187	189	186	150	125%
NECC	262	254	265	150	175%
Pondville Correctional Center	189	188	190	100	189%
SMCC	147	155	139	125	118%
Contract Pre-Release					
Brooke House	9	8	10	20	45%
Women and Children's Program	9	8	10	15	60%
Sub-Total:Contract, Minimum/Pre-Release	1,602	1,600	1,586	1,376	116%
Total	11,508	11,542	11,467	8,029	143%
DOC Inmates in Non-DOC Facilities					
Houses of Correction	189	194	179	n.a.	n.a.
Federal Prisons	8	8	8	n.a.	n.a.
Inter-State Contract	68	68	69	n.a.	n.a.
Sub-Total	265	270	256	n.a.	n.a.
Grand Total	11,774	11,812	11,723	8,029	147%

See Technical Notes, pp. iii-v, for information regarding design capacity, custody level designations, facility closings or name changes relevant to this time period.

Figure 1



- Medium security facilities were the most overcrowded state prison facilities during this quarter, operating overall at 155% of design capacity.
- Minimum/Pre-Release security facilities operated at an average of 116% of design capacity.
- Maximum security facilities operated above capacity during the fourth quarter 2011 at 131%. Souza-Baranowski Correctional Center operated at 128% of design capacity and MCI Cedar Junction operated at 136%.
- Operating within MCI Cedar Junction is a medium security unit designed to house 72 inmates. During the quarter the average daily population was 72, operating at 100% of design capacity.
- MCI-Concord, a medium security facility, was the second most overcrowded during the fourth quarter of 2011, averaging 1,340 inmates and operating over twice its design capacity, at 218%.
- Pondville Correctional Center, a minimum/pre-Release facility, operated at 189%, with an average daily population of 189 inmates.
- NECC, a minimum/pre-Release facility, operated at 175% of design capacity with an average daily population of 262 inmates.
- The Massachusetts Department of Correction (including treatment and support facilities) operated at an average of 143% of design capacity during the fourth quarter of 2011.

Table 2 provides the DOC figures for the previous twelve months (October 31, 2010 to September 30, 2011). These figures indicate that the DOC custody population increased by 322 inmates, or three percent, over the twelve-month period from 11,263 in October 2010 to 11,585 in September 2011.

DOC inmates housed in non-DOC Facilities had an average daily population of 253 inmates: 177 inmates in Houses of Correction, 67 inmates in Interstate Contract and 8 inmates in a Federal Prison.

The DOC jurisdiction population increased from 11,500 to 11,856 over the twelve month period, an increase of 356 inmates, or three percent. The average daily population during this time period was 11,676.

Table 2

**Previous Twelve Months
Population in DOC Facilities, October 31, 2010 to September 30, 2011**

Security Level/Facility	Avg. Daily Population	Beginning Population	Ending Population	Design/Rated Capacity	% ADP Capacity
Maximum					
Cedar Junction	707	637	760	561	126%
SBCC	1,274	1,221	1,233	1,024	124%
Sub-Total, Maximum	1,981	1,858	1,993	1,585	125%
Medium					
Bay State	318	313	328	266	120%
Massachusetts Treatment Center	627	627	636	561	112%
Cedar Junction	72	72	72	72	100%
MCI Concord	1,336	1,305	1,353	614	218%
MCI Framingham (Female)	462	490	447	388	119%
MCI Framingham: ATU (Female)	209	233	265	64	327%
MCI Norfolk	1,511	1,475	1,513	1,084	139%
MCI Shirley	1,196	1,197	1,209	720	166%
NCCI Gardner	921	908	992	568	162%
OCCC @ Bridgewater	742	708	737	480	155%
Shattuck Correctional Unit	25	29	24	24	104%
State Hospital @ Bridgewater	384	387	395	227	169%
Sub-Total, Medium	7,803	7,744	7,971	5,068	154%
Minimum					
MA Alcohol and Substance Abuse Center	150	143	171	236	64%
MCI Plymouth	187	202	180	151	124%
MCI Shirley	317	328	307	299	106%
NCCI Gardner	27	26	24	30	90%
OCCC	141	155	139	100	141%
Min/Pre					
Boston Pre-Release Center	186	195	189	150	124%
NECC	268	269	255	150	179%
Pondville Correctional Center	192	194	182	100	192%
SMCC	152	130	157	125	122%
Contract Pre-Release					
Brooke House	14	18	9	20	70%
Women and Children's Program	5	1	8	15	33%
Sub-Total: Contract, Minimum/Pre-Release	1,637	1,661	1,621	1,376	119%
Total	11,423	11,263	11,585	8,029	142%
DOC Inmates in Non-DOC Facilities					
Houses of Correction	177	160	196	n.a.	n.a.
Federal Prisons	8	9	8	n.a.	n.a.
Inter-State Contract	67	68	67	n.a.	n.a.
Sub-Total	253	237	271	n.a.	n.a.
Grand Total	11,676	11,500	11,856	8,029	145%

See Technical Notes, pp iii-vi, for information regarding design capacity, custody level designations, facility closings or name changes relevant to this time period.

Table 3 presents the county figures for the fourth quarter of 2011. During the fourth quarter the county population decreased by 648 inmates, or five percent, beginning the quarter with 12,586 inmates and ending with 11,938. The average daily population was 12,355 with a design capacity of 8,633. On average, the county facilities operated at 143% of design capacity.

Table 3

Fourth Quarter 2011 Population in County Correctional Facilities by County, October 3, 2011 to December 27, 2011					
Facility	Avg. Daily Population	Beginning Population	Ending Population	Design/Rated Capacity	% ADP Capacity
Barnstable	429	449	403	300	143%
Berkshire	268	273	275	288	93%
Bristol	1,422	1,439	1,372	566	251%
Dukes	29	25	26	19	153%
Essex	1,608	1,595	1,580	658	244%
Franklin	205	195	228	144	142%
Hampden	1,539	1,598	1,475	1,492	103%
Hampshire	275	283	260	248	111%
Middlesex	1,205	1,202	1,166	1,035	116%
Norfolk	648	658	636	354	183%
Plymouth	1,345	1,407	1,276	1,140	118%
Suffolk	2,141	2,212	2,059	1,599	134%
Worcester	1,241	1,250	1,182	790	157%
Total	12,355	12,586	11,938	8,633	143%

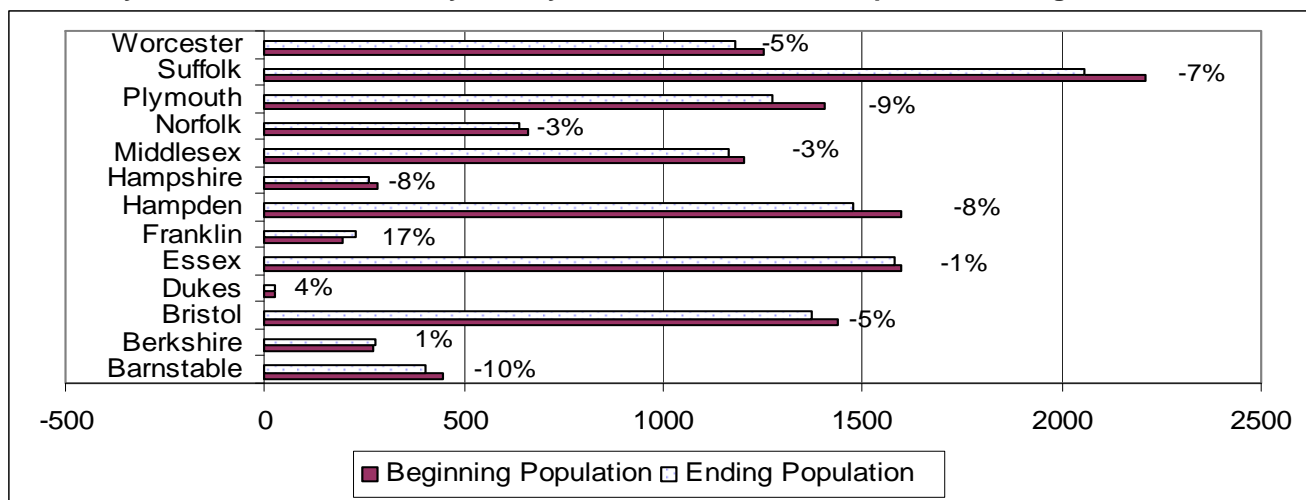
Table 4 presents the breakdown of county figures for the fourth quarter of 2011 for the counties which operate more than one facility.

Table 4

Fourth Quarter 2011 Population in County Correctional Facilities by Facility, October 3, 2011 to December 27, 2011					
Facility	Avg. Daily Population	Beginning Population	Ending Population	Design/Rated Capacity	% ADP Capacity
Bristol County					
Bristol Ash Street	191	192	192	206	93%
Bristol Dartmouth	1,140	1,15	1,102	304	375%
Bristol Women's Center	91	91	78	56	163%
Essex County					
Essex Middleton	1,218	1,191	1,233	500	244%
Essex W.I.T	44	43	42	23	191%
Essex LCAC	346	361	305	135	256%
Hampden County					
Hampden	1,248	1,315	1,161	1,178	106%
Hampden OUI	154	155	153	125	123%
Hampden Women's Center	137	128	161	189	72%
Middlesex County					
Middlesex Cambridge	382	385	340	161	237%
Middlesex Billerica	824	817	826	874	94%
Norfolk County					
Norfolk Dedham	648	658	636	302	215%
Norfolk Braintree	-	-	-	52	0%
Suffolk County					
Suffolk Nashua Street	719	750	700	453	159%
Suffolk South Bay	1,423	1,462	1,359	1,146	124%

See Technical Notes, pp .iii-vi, for information regarding design capacity, custody level designations, facility closings or name changes relevant to this time period.

Figure 2
MA County Correctional Facilities by County, Fourth Quarter 2011 Population Change



- Most county correctional institutions have jail beds (to hold prisoners awaiting trial) and house of correction beds (designated for sentenced inmates), with the exception of Suffolk County, which houses these populations in separate facilities. The design capacities are determined within each facility and separate capacities are not designated as “jail” (detainees) or “house of correction” (county sentenced) beds.
- In the fourth quarter of 2011, the county correctional system operated at 143% of its design capacity, with an average daily population of 12,355 and a capacity designed to hold 8,633 inmates.
- Barnstable County reported the largest percentage decrease, 10% for the fourth quarter. Their population decreased by 46 inmates from 449 inmates at the beginning of the quarter to 403 inmates at the end of the quarter.
- Franklin County had the largest increases, at 17% over the quarter and an increase of 33 inmates.
- The county correctional facilities’ (jails and houses of correction) population decreased by 648 inmates, or five percent, for the fourth quarter of 2011, from 12,586 at the beginning of the quarter to 11,938 at the end of the quarter.

Table 5 presents the county figures for the previous twelve months (October 25, 2010 to September 26, 2011). The figures indicate that the county population decreased by 188 inmates over this twelve-month period, or one percent, from 12,762 in October 2010 to 12,574 in September 2011.

Table 5

Previous Twelve Months Population in County Correctional Facilities by County, October 25, 2010 to September 26, 2011					
Facility	Avg. Daily Population	Beginning Population	Ending Population	Design/Rated Capacity	% ADP Capacity
Barnstable	418	428	439	300	139%
Berkshire	294	327	271	288	102%
Bristol	1,390	1,401	1,439	566	246%
Dukes	22	31	25	19	116%
Essex	1,568	1,602	1,622	658	238%
Franklin	231	234	193	144	160%
Hampden	1,548	1,718	1,581	1,492	104%
Hampshire	271	275	288	248	109%
Middlesex	1,187	1,233	1,192	1,035	115%
Norfolk	649	632	672	354	183%
Plymouth	1,423	1,467	1,404	1,140	125%
Suffolk	2,138	2,208	2,205	1,599	134%
Worcester	1,159	1,206	1,243	790	147%
Total	12,298	12,762	12,574	8,633	142%

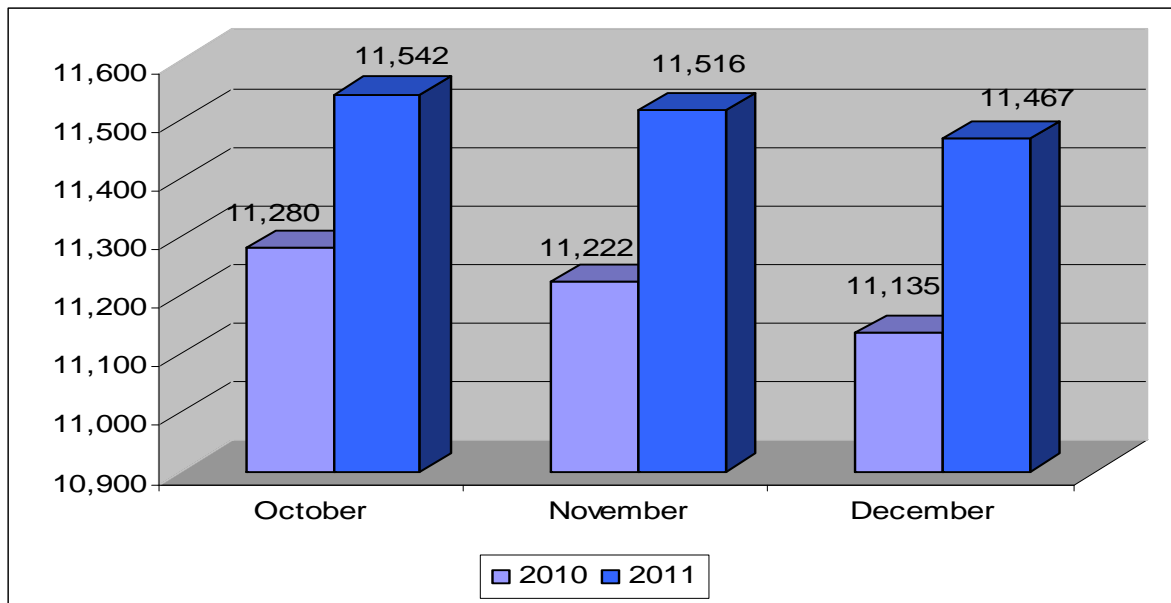
Table 6 presents the county figures for the previous twelve months. The following table presents a breakdown of facility population and capacity for counties that operate more than one facility.

Table 6

Previous Twelve Months Population in County Correctional Facilities by Facility, October 25, 2010 to September 26, 2011					
Facility	Avg. Daily Population	Beginning Population	Ending Population	Design/Rated Capacity	% ADP Capacity
Bristol County					
Bristol Ash Street	188	188	189	206	91%
Bristol Dartmouth	1,105	1,115	1,153	304	363%
Women's Center	96	113	97	56	171%
Essex County					
Essex Middleton	1,167	1,229	1,198	500	233%
Essex W.I.T.	40	41	45	23	174%
Essex LCAC	362	332	379	135	268%
Hampden County					
Hampden	1,278	1,425	1,301	1,178	108%
Hampden OUI	148	155	150	125	118%
Hampden Women's Center	122	138	130	189	65%
Middlesex County					
Middlesex Cambridge	370	379	379	161	230%
Middlesex Billerica	817	854	873	874	93%
Norfolk County					
Norfolk Dedham	649	632	672	302	215%
Norfolk Braintree	-	-	-	52	0%
Suffolk County					
Suffolk Nashua Street	709	722	742	453	157%
Suffolk South Bay	1,428	1,486	1,463	1,146	125%

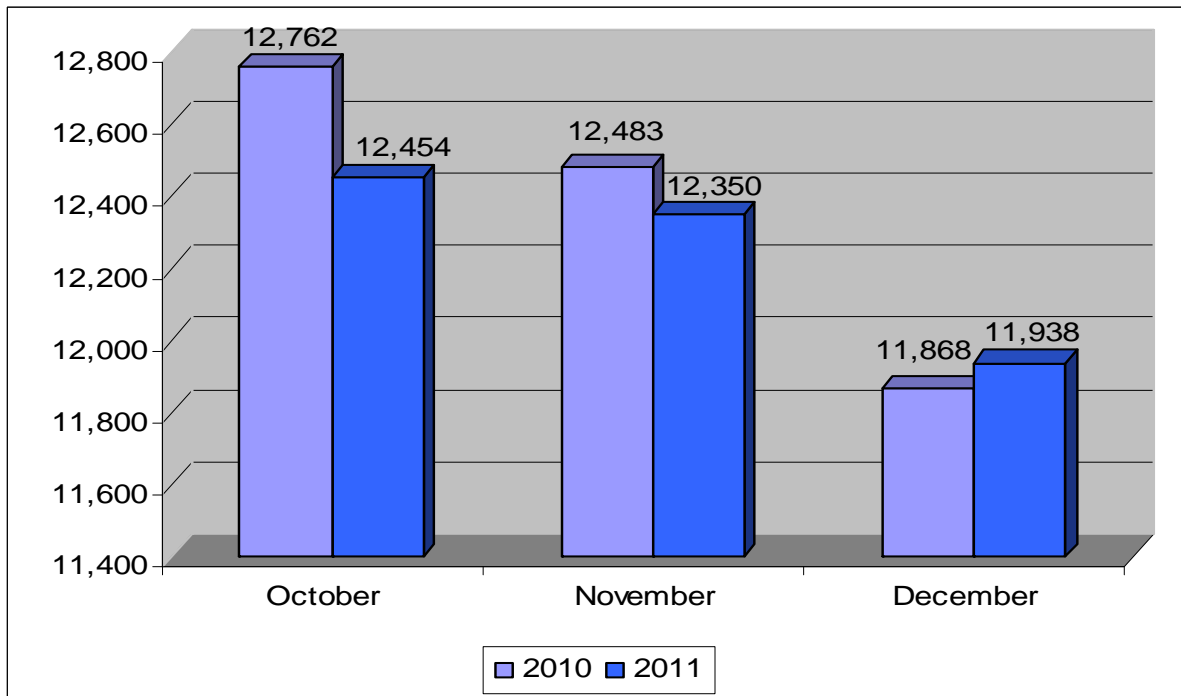
See Technical Notes, pp. iii-vi, for information regarding design capacity, custody level designations, facility closings or name changes relevant to this time period.

Figure 3
DOC Custody Population Change, Fourth Quarters of 2010 and 2011



The graph above compares the DOC custody population including treatment and support facilities for the fourth quarter in 2011 to the fourth quarter in 2010 by month. For October 2011, the DOC population increased by 262 inmates, or two percent compared to October 2010; for November 2011 the population increased by 294 inmates, or three percent; for December 2011 the population increased by 332 inmates, or three percent.

Figure 4
County Correctional Population Change, Fourth Quarters of 2010 and 2011



The graph above compares the County Correctional population for the fourth quarter in 2011 to the fourth quarter in 2010 by month. For October 2011, the population decreased by 308 inmates, or two percent, compared to 2010; for November 2011 the population decreased by 133 inmates, or one percent, for December 2011 the population increased by 70 inmates, or one percent.

Note: Data for Figure 4 was taken from the end of the month daily count sheet compiled by the DOC Classification Division.

Table 7 provides quarterly statistics on criminally sentenced, new court commitments to the DOC for the first, second, third and fourth quarters of 2010 and 2011, by gender. Overall, there was a decrease of 25 new court commitments for the fourth quarter 2010, in comparison to new court commitments in the fourth quarter 2011, from 727 to 702. During this time period, male commitments increased by 7, or 1%, from 503 to 510; female commitments decreased by 32, or fourteen percent, from 224 to 192.

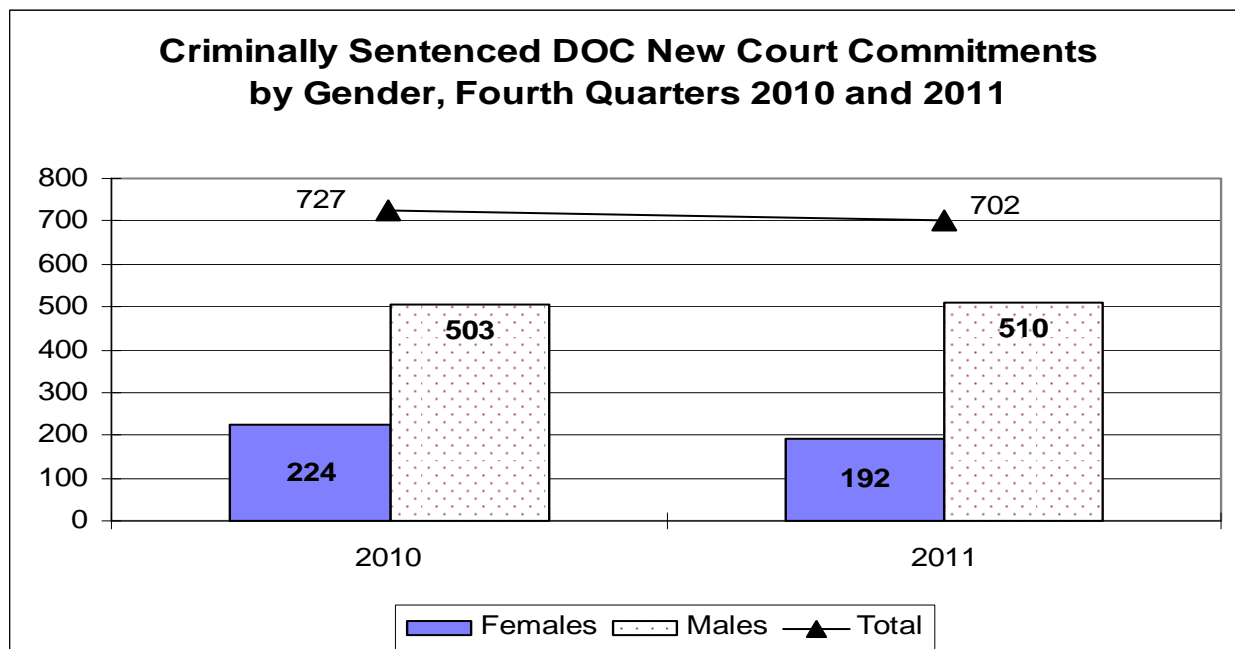
Table 7

**Criminally Sentenced DOC New Court Commitments
by Gender, 2010 and 2011**

	2010	2011	Difference
<u>Males</u>			
First Quarter	573	601	5%
Second Quarter	510	579	14%
Third Quarter	437	410	-6%
Fourth Quarter	503	510	1%
Subtotal	2,023	2,100	5%
<u>Females</u>			
First Quarter	251	221	-12%
Second Quarter	256	234	-9%
Third Quarter	221	202	-9%
Fourth Quarter	224	192	-14%
Subtotal	952	849	-10%
Total	2,975	2,949	0%

Figure 5 provides a graphical representation of the number of criminally sentenced new court commitments to the DOC during the fourth quarters of 2010 and 2011, by gender.

Figure 5



Note: Data for Table 7 and Figure 5 were obtained from the DOC's IMS Database.