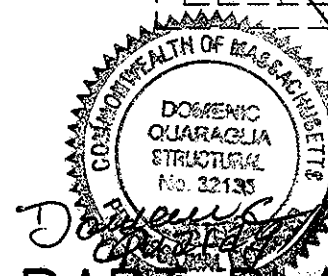
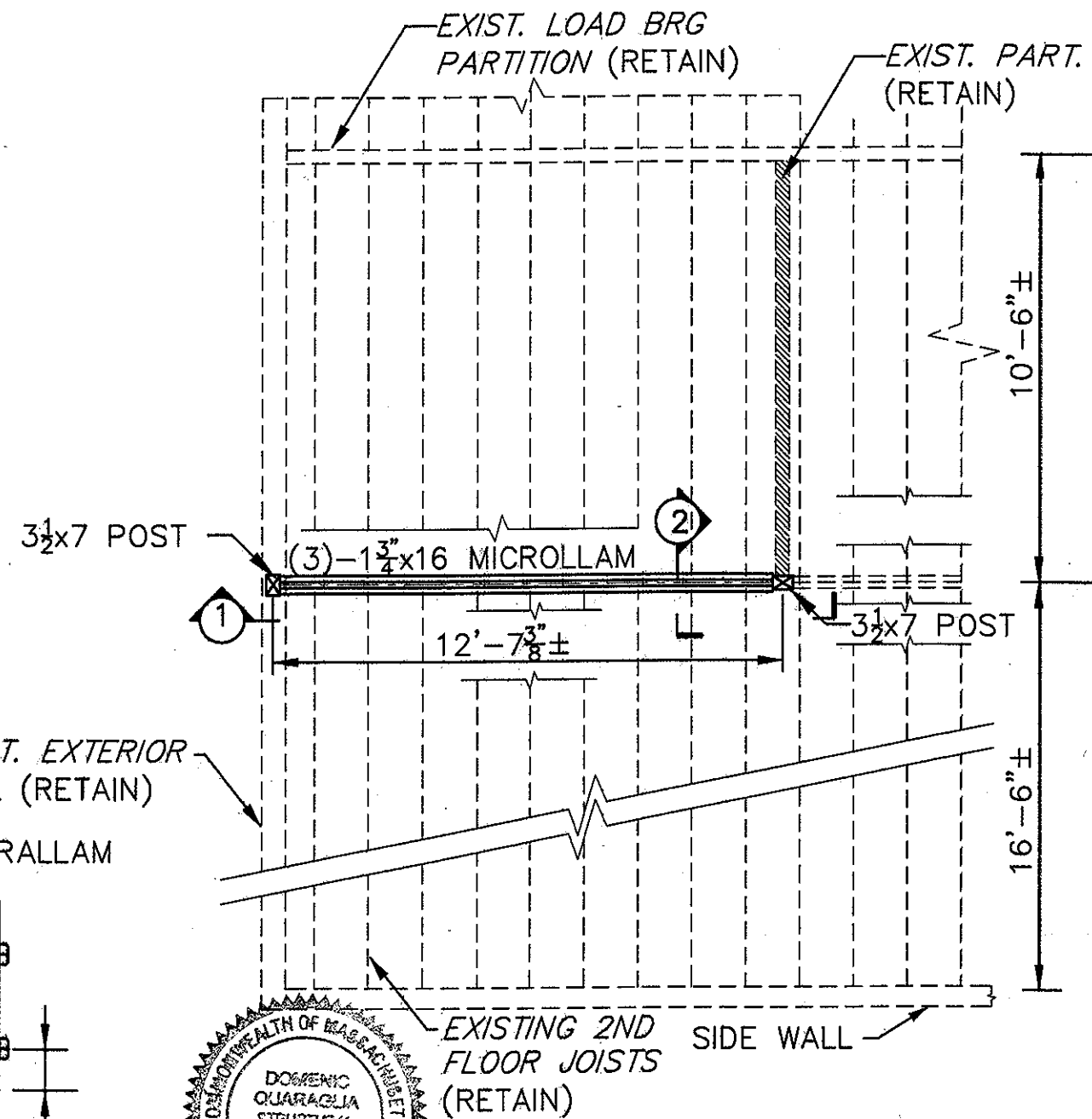
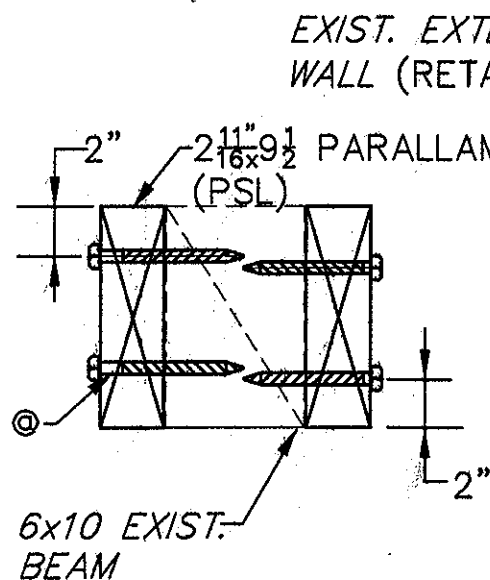


NOTE:
HEIGHT BETWEEN TOP OF 1st TO
TOP OF 2nd FLOOR.
HT = 12'-4 1/2"
(HT MEASURED @ FRONT HALLWAY
AT STAIRWAY TO SECOND FLOOR
ACCESS.)



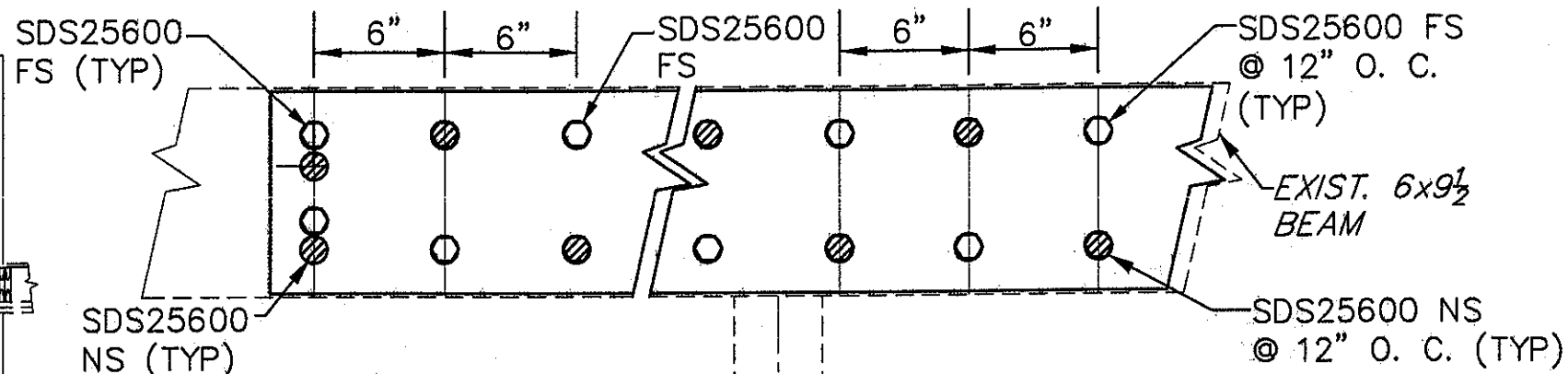
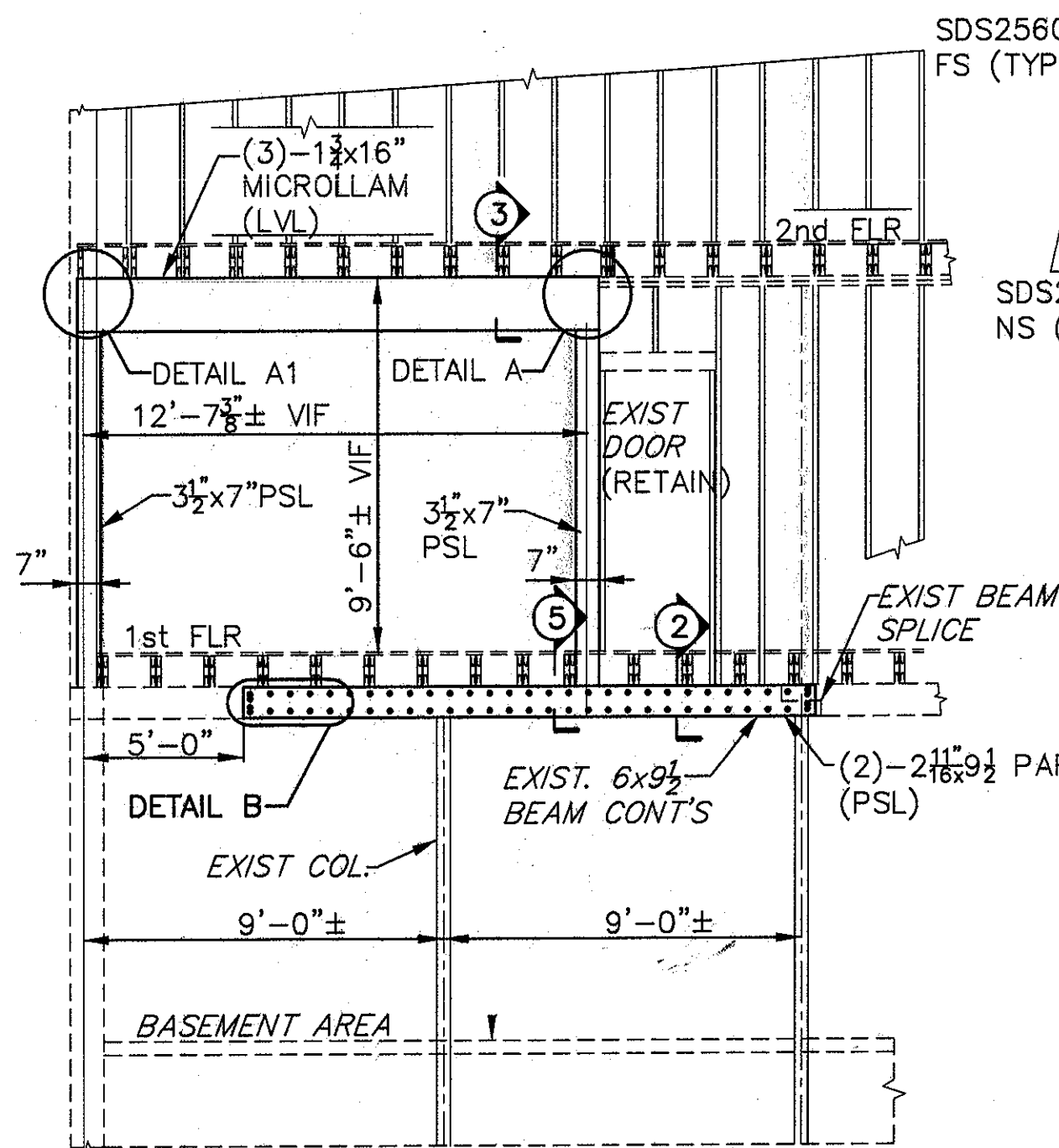
PART PLAN-1ST FLOOR FRAMING
SCALE: 1/4"=1'-0"

SECTION-2
SCALE 1 1/2"=1'-0"

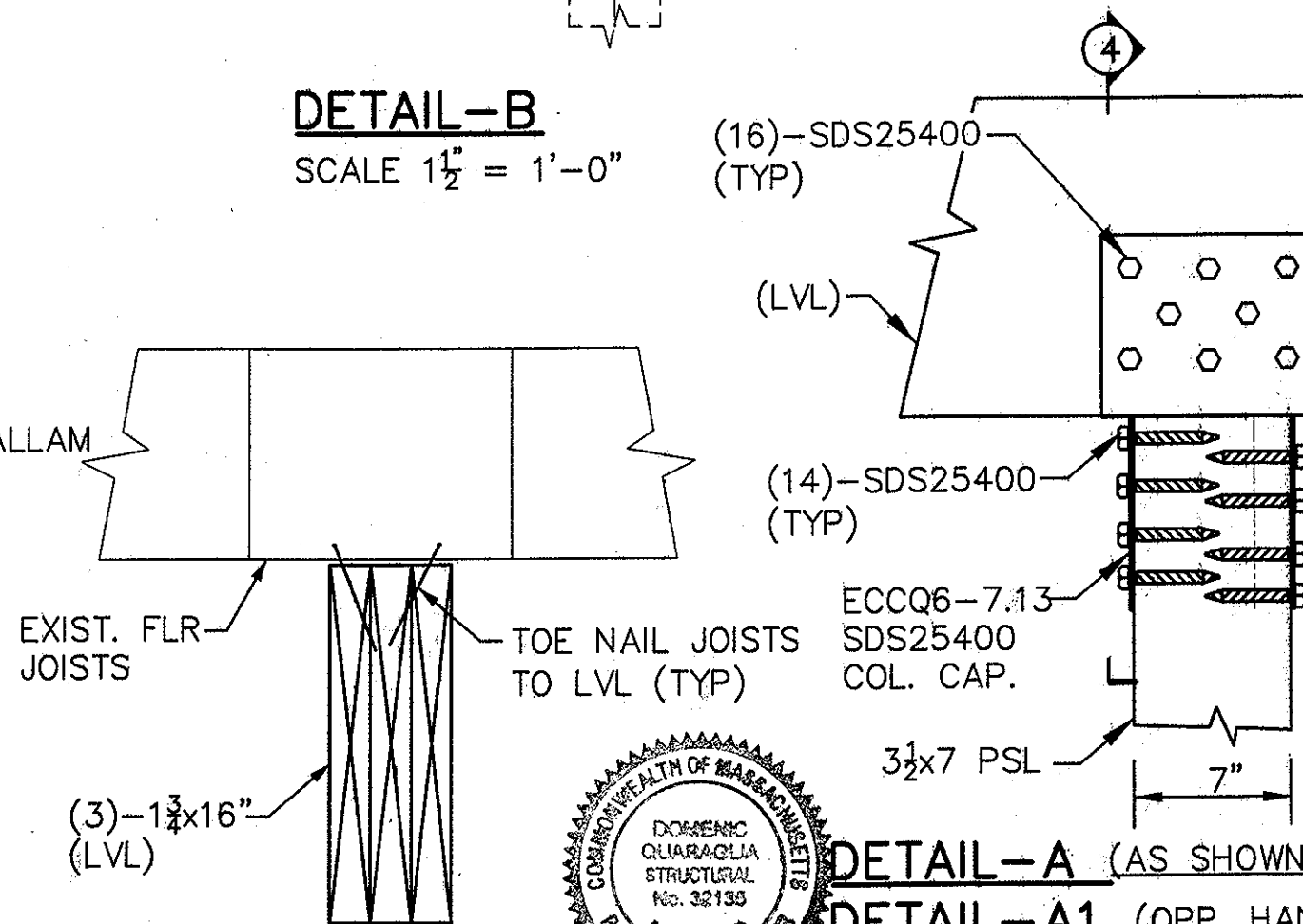
PART PLAN-2nd FLOOR FRAMING
SCALE: 1/4"=1'-0"

TITLE	
1st & 2nd FLR PLANS	
LOCATION	
PROP. 2nd FLOOR SUPPORT BEAM 80 NAHANT STREET, LYNN, MA	

DOMENIC QUARAGLIA ENGINEERING, INC. CONSULTING ENGINEERS 99 Washington Street, Suite 215 Melrose, MA 02178 (781) 862-4690	DRAWN BY: DQ	SCALE: AS NOTED	REV.	SHT. 1 OF 3
	CHECKED BY: DQ			
	DATE: 2/26/18			
	PROJ. NO.: 18.104A(1)			



DETAIL-B
SCALE 1 1/2" = 1'-0"



DETAIL-A (AS SHOWN)
DETAIL-A1 (OPP. HAND)
SCALE 1 1/2" = 1'-0"

NOTE:

STRUCTURE CONSIST OF
BASEMENT AREA; 1ST FLOOR;
2ND FLOOR; LIVING ATTIC SPACE
AND SLOPING ROOF.

SECTION-3
SCALE 1 1/2" = 1'-0"

LEGEND:

NS= DENOTES NEAR SIDE.
FS= DENOTES FAR SIDE

SECTION-1
SCALE 1 1/4" = 1'-0"

DOMENIC QUARAGLIA
ENGINEERING, INC.
CONSULTING ENGINEERS
99 Washington Street, Suite 215
Melrose, MA 02178
(781) 862-4690

DRAWN BY: DQ
CHECKED BY: DQ
DATE: 2/26/18
PROJ. NO.: 18.104A(1)

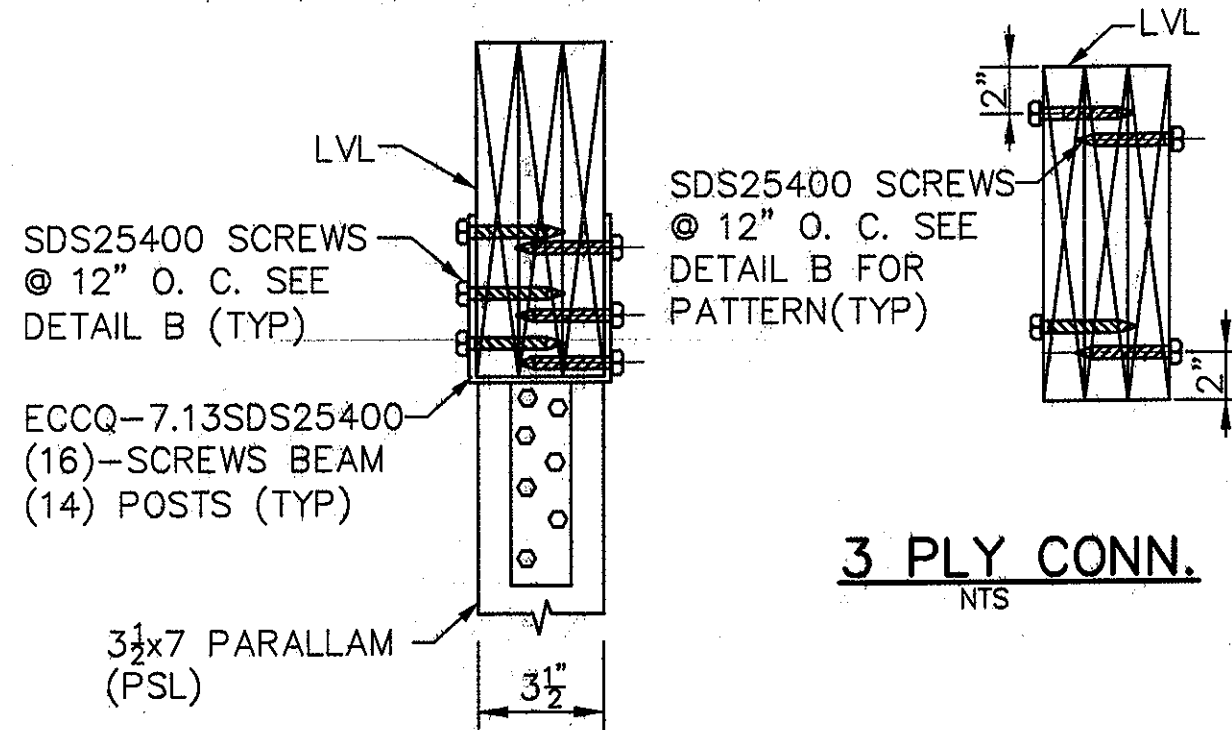
SCALE:
AS NOTED

REV.

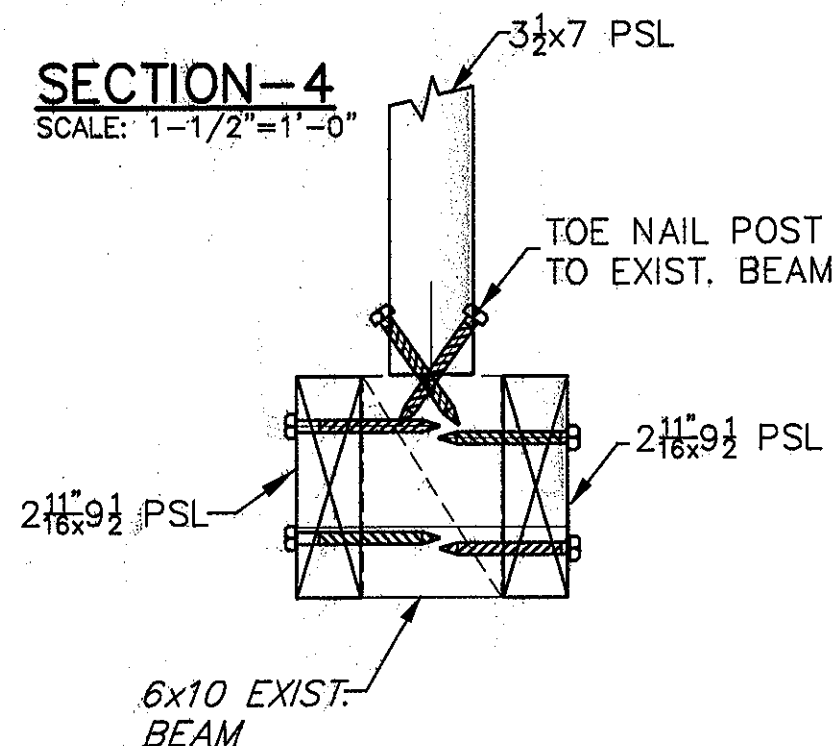
SHT. 2 OF 3

TITLE
SECTION AND DETAILS
LOCATION

PROP. 2nd FLOOR SUPPORT BEAM
80 NAHANT STREET, LYNN, MA



SECTION-4
SCALE: 1-1/2" = 1'-0"



SECTION-5
SCALE 1 1/2" = 1'-0"

GENERAL NOTES

- 1) THE CONTRACTOR SHALL INSTALL THE NEW POSTS & BEAM AND SHALL PROVIDE TEMPORARY SUPPORT FOR THE EXISTING 2ND FLOOR JOISTS, PRIOR TO DEMOLITION OF THE EXISTING PARTITION WALL SCHEDULED TO BE REMOVED.
- 2) THE CONTRACTOR SHALL DESIGN, FURNISH, AND INSTALL THE TEMPORARY 2ND FLOOR SUPPORT JOIST.
3. JACK THE EXISTING FLOOR JOISTS $1\frac{1}{8}\pm$ HIGHER THAN FINAL ELEVATION PRIOR TO INSTALLING THE NEW BEAM. THE PROPOSED BEAM SHALL BE INSTALLED SO THAT THE BOTTOM ELEV. OF THE FLOOR JOISTS IN THE FINAL POSITION IS THE SAME AS THE PRESENT FLOOR JOIST ELEVATION.
- 4) THE CONTRACTOR SHALL USE MAXIMUM CARE NOT TO DAMAGE THE EXISTING PORTION OF THE STRUCTURE SCHEDULED TO BE RETAINED.
5. THE PROPOSED POST SHALL CONSISTS OF $3\frac{1}{2}\times 7$ " PARALLAM (PSL) WITH 1.8E AND $F_{cII} = 2500$ PSI.
6. THE PROPOSED BEAM SHALL CONSISTS OF (3)- $1\frac{3}{4}\times 16$ " MICROLLAM (LVL) WITH 1.9E AND $F_b = 2600$ PSI.
- 7) THE CONTRACTOR IS RESPONSIBLE FOR BRACING THE 2ND FLOOR DURING THE CONSTRUCTION PHASE. THE CONTRACTOR SHALL DETERMINE AND ESTABLISH, BY FIELD MEASUREMENT, THE ACTUAL DIMENSIONS AND DETAILS NECESSARY TO COMPLETE THE WORK AS SHOWN ON THE PLAN. THE CONTRACTOR SHALL BE RESPONSIBLE FOR THE ACCURACY AND ADEQUACY OF SAID MEASUREMENTS, AND SHALL NOT ORDER ANY MATERIALS OR COMMENCE WITH ANY WORK UNTIL THE FULL EXTENT OF THE PROPOSED WORK HAS BEEN DISCUSSED WITH AND APPROVED BY THE OWNER/OWNER REPRESENTATIVE.
8. THE CONTRACTOR SHALL REMOVE THE TEMPORARY SHORING ONLY AFTER THE PROPOSED MODIFICATIONS HAS BEEN COMPLETED.
9. THE DIMENSIONS SHOWN ON THESE DRAWINGS ARE TAKEN FROM FIELD MEASUREMENTS AND ARE NOT GUARANTEED.



**DOMENIC QUARAGLIA
ENGINEERING, INC.**
CONSULTING ENGINEERS
99 Washington Street, Suite 215
Melrose, MA 02176
(781) 862-4680

DRAWN BY: DQ
CHECKED BY: DQ
DATE: 2/26/18
PROJ. NO.: 18.104A(1)

SCALE:
AS NOTED

REV.

SHT. 3 OF 3

TITLE
SECTIONS AND GENERAL NOTES
LOCATION

**PROP. 2nd FLOOR SUPPORT BEAM
80 NAHANT STREET, LYNN, MA**