

521 CMR 12.00: **EDUCATIONAL FACILITIES**

12.1 **GENERAL**

Educational *facilities* shall comply with 521 CMR, except as specified or modified in 521 CMR 12.00. Educational *facilities* shall include but not be limited to: public and private schools, nurseries, pre-schools, day care facilities, colleges and universities, libraries, galleries, museums, and training *facilities*.

12.1.1 Applicability: Administrative spaces, instructional spaces, and areas open to students or the general public shall comply with 521 CMR.

12.1.2 Dormitories shall comply with the requirements of **521 CMR 8.00: TRANSIENT LODGING FACILITIES**.

12.1.3 Amphitheatres, lecture halls and classrooms of educational facilities shall comply with **521 CMR 14.00: PLACES OF ASSEMBLY**.

12.2 **LIBRARIES**

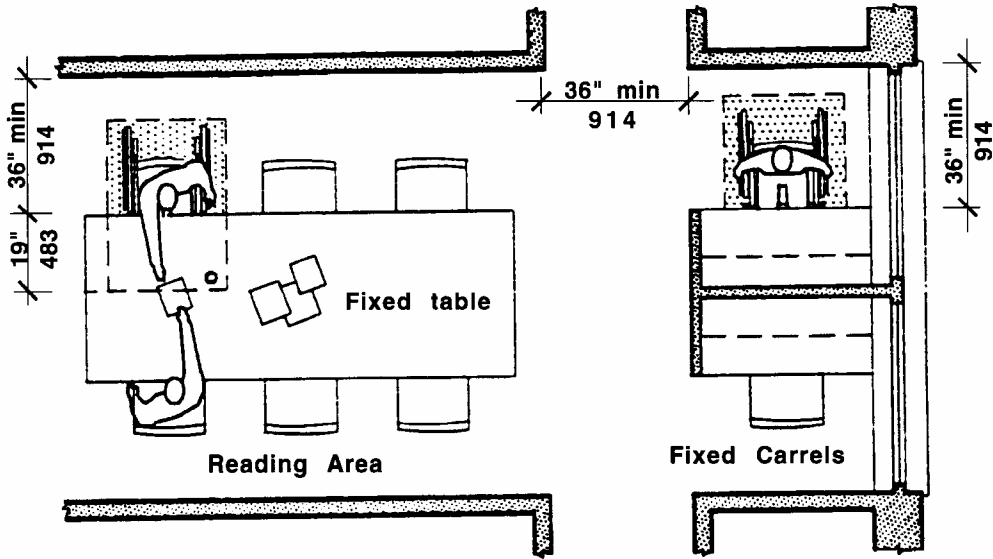
Shall comply with the following and **Figure 12a**.

12.2.1 General: All public areas of a library, including but not limited to, reading and study areas, stacks, reference rooms, reserve areas, and special *facilities* or collections, shall comply with **521 CMR 12.00**.

12.2.2 Reading Areas, Study Areas and Computer Workstations: Where tables, study carrels, computer workstations, or fixed seating are provided, at least 5% with a minimum of one of each *element* shall be *accessible*, be on an *accessible route*, and comply with the following:

- a. *Access aisles*: A 36 inch (36" = 914mm) *access aisle* shall be provided between tables and between study carrels. No seating shall overlap the *access aisle*. **See Fig. 12a**.
- b. *Clear floor space* as defined in **521 CMR 5.00: DEFINITIONS** shall be provided at each seating space. Such *clear floor* space shall not overlap knee space by more than 19 inches (19" = 483 mm). **See Fig. 12a**.
- c. *Knee Clearances*: If seating for disabled persons is provided at tables or counters, kneespaces at least 27 inches (27" = 686mm) high, 30 inches (30" = 762mm) wide, and 19 inches (19" = 483mm) deep shall be provided. **See Fig. 12a**.
- d. *Height of Tables or Counters*: The tops of *accessible* tables and counters shall be from 28 inches to 34 inches (28" to 34" = 711mm to 864mm) above the finished floor or ground.

12.00: EDUCATIONAL FACILITIES

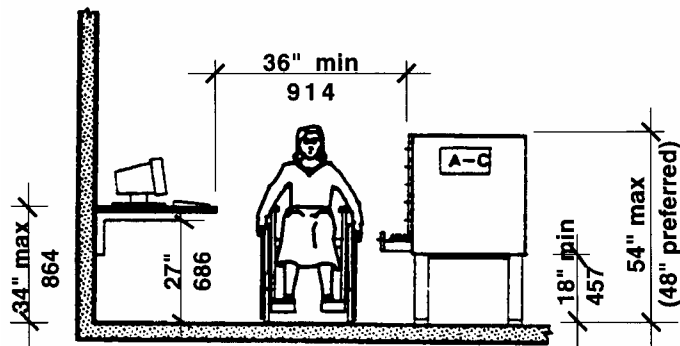


Seating in Libraries
Figure 12a

12.2.3 Check-Out Areas: At least one lane at each check-out area shall have a counter a minimum of 36 inches (36" = 914mm) in length and a maximum of 36 inches (36" = 914mm) in height. See Fig. 7a.

12.2.4 Security Devices: Any traffic control or book security gates or turnstiles shall not prevent access or egress to people in wheelchairs. Security gates shall have a 32 inch (32" = 812mm) clear opening. If turnstiles are used, an adjacent accessible, unlocked door or gate shall be provided. Any level changes created by such devices shall comply with 521 CMR 20.00: ACCESSIBLE ROUTE and 521 CMR 29.00: FLOOR SURFACES.

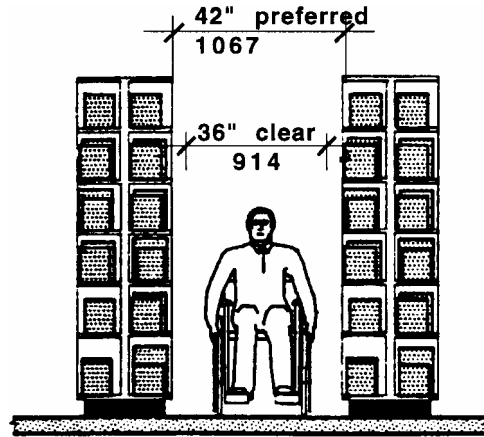
12.2.5 Card Catalogs: Clear aisle space at card catalogs shall be a minimum of 36 inches (36" = 914mm) and comply with Fig. 12b. Maximum reach height shall be between 18 inches (18" = 457mm) and 54 inches (54" = 1372mm), with a height of 48 inches (48" = 1219mm) preferred.



Catalogs (Card and Computer)
Figure 12b

12.00: **EDUCATIONAL FACILITIES**

12.2.6 Stacks: Aisles between stacks shall have a minimum *clear* width of 36 inches (36" = 914mm) and preferably 42 inches (42" = 1067mm), where possible, as shown in **Fig. 12c**. Shelf height in stack areas is unrestricted.



Stacks
Figure 12c

12.3 **KITCHENS IN CLASSROOMS:**

Kitchens in classrooms shall comply with the requirements of **521 CMR 32.00: KITCHENS**.

12.4 **SINKS, COUNTERS, AND OTHER WORK AREAS IN CLASSROOMS OR LABORATORIES**

At least 5%, with a minimum of one of each type of element, in each classroom or laboratory shall comply with the following:

- a. Countertops and sinks shall comply with **521 CMR 12.2.2 b, 12.2.2 c, and 12.2.2d**.
- b. Accessible storage: At least 50% of shelf space in cabinets or refrigerator/freezers shall comply with **521 CMR 6.5, Forward Reach** and **521 CMR 6.6, Side Reach** and *space* shall be designed to allow for the operation of cabinet and/or appliance doors so that all cabinets and appliances are *accessible* and usable.
- c. Controls and operating mechanisms shall comply with **521 CMR 39.00: CONTROLS**.

12.5 **DRINKING FOUNTAINS IN CLASSROOMS:**

Shall comply with the requirements of **521 CMR 36.00: DRINKING FOUNTAINS**.

12.6 **RECREATIONAL FACILITIES AT EDUCATIONAL FACILITIES** shall comply with the requirements of **521 CMR 19.00: RECREATIONAL FACILITIES**

12.00: **EDUCATIONAL FACILITIES**

NON-TEXT PAGE